

CFA Archaeology Ltd

archaeological consultants

Advice on Archaeology & Planning

Environmental Impact Assessment

Interpretation, Design & Display

Finds/ Environmental Analysis

Field Evaluation & Excavation


Historic Building Recording

Site & Landscape Survey

Geophysical Survey

High Myres Cottage, East Renfrewshire Archaeological Buildings Appraisal

Report No. 3512

 0131 273 4380

 0131 273 4381

 info@cfa-archaeology.co.uk

 www.cfa-archaeology.co.uk

CFA ARCHAEOLOGY LTD

The Old Engine House
Eskmills Business Park
Musselburgh
East Lothian
EH21 7PQ

Tel: 0131 273 4380
Fax: 0131 273 4381
email: info@cfa-archaeology.co.uk
web: www.cfa-archaeology.co.uk

Author	Michael Cressey BA MSc PhD MCifA FSA Scot
Illustrator	Greame Carruthers MA MCifA
Approver	Bruce Glendinning BSc Pg Dip MCifA
Commissioned by	ScottishPower Renewables.
Date issued	February 2017
Version	2
Oasis Ref No.	cfaarcha1-271584
Grid Reference No.	NS 58599 47851

This document has been prepared in accordance with CFA Archaeology Ltd standard operating procedures.

High Myres Cottage, East Renfrewshire Archaeological Buildings Appraisal

Report No. 3512

CONTENTS

1.	Introduction	3
2.	Methodology	3
3.	Desk Based Assessment	3
4.	Site Appraisal Results	4
5.	Conclusion	6
6.	References	6
	Appendix 1 Photographic Register	7

Illustrations (bound at rear)

1	General location map and ground floor plan with photographic viewpoints
2a-e	Historical map regression
3	North-facing elevation of the cottage and garage
4	East-facing elevation of the cottage
5	South-facing elevation of the cottage
6	West-facing elevation of the cottage
7	Room 1 Garage, interior view
8	Room 2 Kitchen, interior view
9	Room 3 Hall and spiral staircase
10	Room 7 Living Room fireplace

1. INTRODUCTION

This report was commissioned by ScottishPower Renewables to undertake an archaeological standing building appraisal at High Myres Cottage, East Renfrewshire. High Myres (NGR: NS 58599 47851, Fig 1) lies c.6 km south of the village of Eaglesham within the Whitelee Windfarm. The recently vacated cottage was found to be in an excellent condition.

2. METHODOLOGY

Up-to-date information on the site was sought from Historic Environment Scotland (HES) and the Sites and Monuments Record (SMR), through the use of Pastmap.

Ordnance Survey maps and other early maps held by the Map Library of the National Library of Scotland were examined to identify the earliest mapped occurrence of the site and its evolution through time.

A site appraisal visit was conducted on 13 December 2016 by Dr Mike Cressey, Project Manager for Standing Building Survey at CFA Archaeology Ltd. Measurements were obtained using a hand-held Leica distometer and hand tapes to create a ground floor plan of the cottage. High resolution digital photographs were obtained using a Nikon D300. The photographs taken are listed in Appendix 1 and the orientation of each is shown on the plan (Fig 1).

3. DESK BASED ASSESSMENT

3.1 Cartographic Sources

General Roy's map of 1752-55 (Fig 2a) depicts the site as *Myre* with three buildings and enclosures. Runrig field systems are also depicted to the south of the buildings.

John Ainslie's 1800 map (Fig 2b) depicts *Myres* alongside a track surrounded by moorland. John Thompson's atlas of 1832 shows the same detail.

The 1856 First Edition Ordnance Survey of (Fig 2c) depicts a rectilinear long house with four compartments. The building was then recorded as a *Ruin*.

The 1889 Second Edition Ordnance Survey map (Fig 2d) shows that by this year the cottage had been reconfigured into an L-shaped building. The 1915 Ordnance survey map shows the same cartographic detail.

The 1958 Ordnance Survey map (Fig 2e) shows the cottage with an L-shaped footprint and a slightly wider north end. A mineral railway was in operation on its east side.

The cottage continued to have an L-shaped footprint until 1976 according to a drawing on a title deed seen by the author. Shortly after this year the cottage was altered to its present layout. The south wing was replaced by a new wing on the same early footprint and a new north wing and garage added.

3.2 RCAHMS & Sites and Monuments Record

The RCAHMS database and SMR contained no records for this site.

3.3 Listed Buildings and Scheduled Ancient Monuments

The site is not a Listed Building or a Scheduled Ancient Monument.

4. SITE APPRAISAL RESULTS

The survey results are now described. Table 1 lists the various rooms on the ground floor with individual function and dimensions. A measured plan of the first floor was not made due to its modern layout.

Room No	Function	Dimensions LxB (m)
1	Garage	7.9 x 4.7
2	Kitchen	4.4 x 3.9
3	Entrance Hall	4.1 x 3.5
4	Bedroom with on-suite shower	3.8 x 3
5	Bedroom	3.7 x 3.2
6	Bedroom	3.7 x 3.2
7	Living room	8.2 x 6.4
8	Bathroom	2.8 x 2.1
n/a	Four first floor bedrooms	Not recorded

Table 1 Room number, function and dimensions.

4.1 Cottage Layout

The cottage had two outshot wings both with pitched gables built off the main rectangular 19th century core block. The south wing replaced an earlier 19th century wing that occupied the same footprint. The wing on the north side of the cottage and the lean-to garage were 20th century additions.

4.2 Architectural descriptions

Exterior North-facing Elevation (Fig 3)

The exterior north-facing elevation had a combined length of 11m and included the outshot garage wall that projected off the cottage gable by 5.4m. The cottage gable was rubble built with mainly basalt whinstone with droved ashlar quoins. Two small rectangular windows were recent inserts. The garage wall was constructed of concrete blocks with a large rectangular window and a door at the east end. The main door was on the east-facing elevation.

Exterior East-facing Elevation (front, Fig 4)

The whitewashed exterior east-facing elevation was 22m long and was built of both ashlar and random rubble. The elevation contained two wings dating to the 20th century, both had pitched gables and a centrally placed modern dormer window in the slate roof. The main entrance door was set below an arched opening that entered into a small porch. Attached to the north end of the cottage was the aforementioned

garage. The fenestration included the aforementioned dormer and a small rectangular window in the south gable and three rectangular windows on the ground floor. All were modern double-glazed uPVC.

Exterior South-facing elevation (Gable and wing wall, Fig 5)

The south-facing elevation included the original 19th century rubble-built gable wall with droved ashlar quoins and chimney stack. The elevation also contained the more recent (20th century) stone-built whitewashed south wing wall. The roof was slate and included a Velux window. On the ground floor were two rectangular inserted windows.

Exterior West-facing elevation (Fig 6)

The exterior west-facing elevation comprised the original 19th century core block with off-set dormer windows and a chimney stack in between. The rubble-built wall was framed with droved ashlar quoins. An original window reveal contained droved surrounds with a modern uPVC bedroom window. A timber deck with steps led up to a modern hexagonal uPVC conservatory that was built on a rubble wall.

4.3 Ground floor Interior Layout

Room 1 Garage (Fig 7)

The garage occupied a rectangular footprint and had exposed timber rafters and a concrete floor. The west wall was bare brick and the north wall was bare concrete block. Both walls contained casement windows. The main garage door was on the east wall. Part of the later 20th century wing wall was exposed on the north-facing elevation, which the garage was attached to. The corner of the wing had been built using re-used droved quoins. On the same wall a door led into the kitchen (Room 2).

Room 2 Kitchen (Fig 8)

The kitchen was roughly square shaped with modern fixtures and fittings. A window faced eastwards. On the west side of the kitchen contained a dining area with a sunken floor.

Room 3 Hall (Fig 9)

The hall was L-shaped with the main door on the east wall (west-facing elevation). A metal and wooden spiral staircase occupied the middle of the hall. The floor was wood laminate. A narrow passage led off to three bedrooms at the south end of the cottage (Rooms 4-6).

Rooms 4-6 Bedrooms

Rooms 4-6 were all featureless modern bedrooms. Room 4 had its own on-suite shower. No period fixtures or fittings survived.

Room 7 Living room (Fig 10)

The living room was L-shaped and was lit by a large double-paned sliding door leading out to the conservatory. On the south wall (north-facing elevation) was a large brick-built fireplace with a beaten copper paneled hood above it. A stone-built fire surround occupied most of the wall. A blocked doorway was present on the right hand side (facing) of the fireplace. The walls were whitewashed and the ceiling had mock wooden beams. At the north end of the room was a small ancillary study room lit by a window on the north gable.

Room 8 Bathroom

A bathroom was situated at the north end of the cottage and accessed by a small corridor leading off the living room. The bathroom had a small frosted window on the north wall. All the sanitary fixtures and fittings were very modern (installed in the last 2-3 years).

5. CONCLUSION

From the mid-18th century the cottage originally occupied a typical long-house plan with four compartments up until the late 19th century when it was then mapped as a ruin. By 1889 the building had been converted to a much smaller L-shaped cottage. This plan existed until 1976 when it was again converted with the addition of a rebuilt south wing and new north wing with attached garage. Re-used architectural fabric from these early periods is still visible on the exterior elevations including wide droving marks on the gable quoins and on some of the window surrounds.

High Myres is very typical of the East Renfrewshire vernacular architecture dating from the mid-18th and 19th centuries. Later 20th and early 21st century modernisation has radically altered the interior of High Myres cottage and no internal period features survive.

6. REFERENCES

Ainslie, J 1800 'Map of the Southern Part of Scotland'

Ordnance Survey 1856 Renfrew Sheet XIX.14 (Eaglesham) 25 inch to the mile.

Ordnance Survey 1899 Renfrewshire Sheet XIX.SW 6 inch to the mile.

Ordnance Survey 1915 Renfrewshire Sheet XIX.SW 6 inch to the mile.

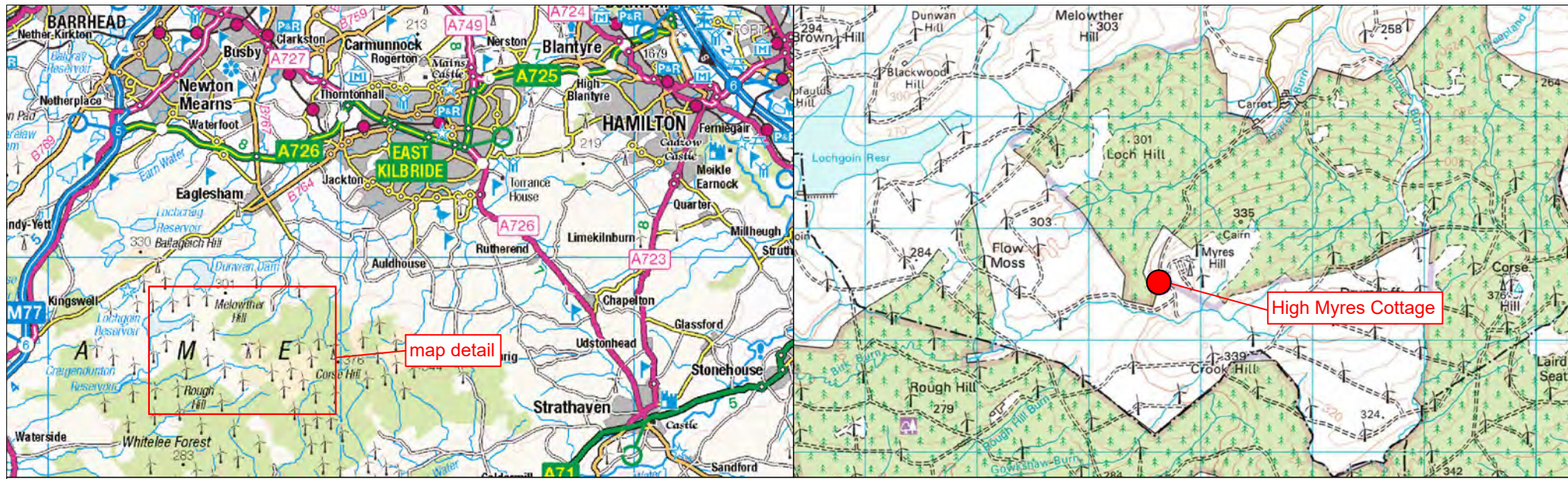
Ordnance Survey 1958 NS54 1:25,000

Roy's Military Map of Scotland 1752-55.

Thomson, J. 1832 'Atlas of Scotland'.

APPENDIX 1: PHOTOGRAPHIC REGISTER

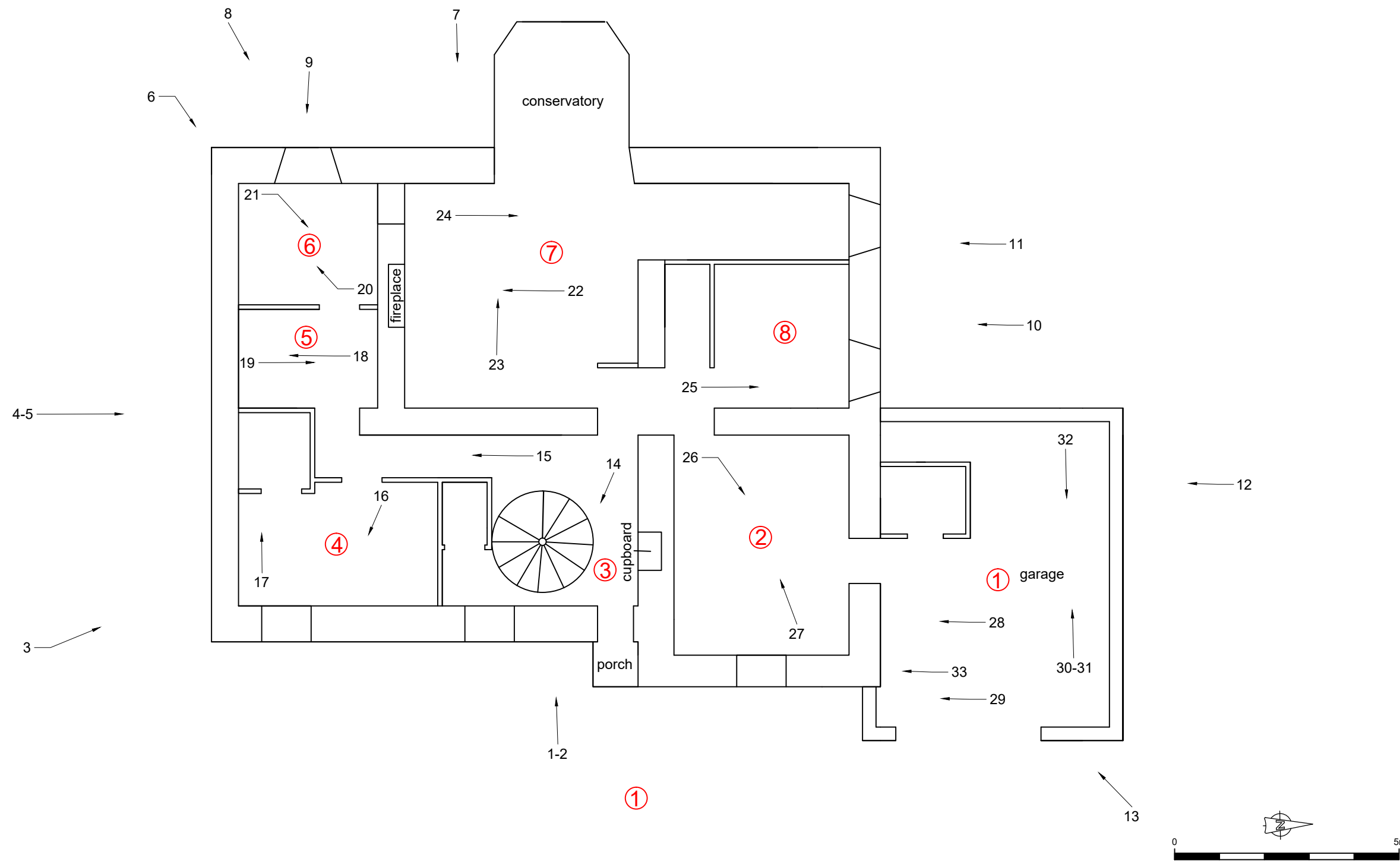
Photo No	Summary description	Facing
001	Exterior, E-facing elevation	W
002	Exterior, E-facing elevation, N end	W
003	Exterior SE corner of the cottage	NW
004-005	Exterior S-facing gable and extension roofline	N
006	Exterior SW-facing corner of the cottage	NE
007	Exterior W-facing elevation with deck and conservatory	E
008	Exterior W elevation and S gable	NE
009	Exterior W-facing elevation, window surrounds with droving	E
010	Exterior S-facing former gable with inserted windows	N
011	Exterior N-facing former gable, quoin detail	S
012	Exterior N-facing elevation of the garage	S
013	Exterior NE-facing corner of the garage	SW
014	Unit 3, interior view of the hall with spiral staircase	E
015	Unit 3, hallway to Units 4, 5 and 6.	S
016	Unit 4, bedroom window	SE
017	Unit 4, bedroom on-suite shower room	W
018	Unit 5, bedroom, N-facing wall and window	S
019	Unit 5, bedroom S-facing wall	N
020	Unit 6, bedroom window detail	SE
021	Unit 6, bedroom door leading to Unit 5	NE
022	Unit 7, living room fireplace with copper hood	S
023	Unit 7, living room, sliding doors leading to the conservatory	W
024	Unit 7, living room annex room	N
025	Unit 8, bathroom with inserted gable window	N
026	Unit 2, fitted kitchen general view	E
027	Unit 2, fitted kitchen general view	W
028	Unit 1, garage wall and entrance to the kitchen (Unit 2)	S
029	Unit 1, garage, gable wall quoins	S
030-031	Unit 1, garage, general view	W
032	Unit 1, garage walls and main door	E
033	Unit 1, same as shot 029	S
034	First floor bedroom, general shot	S
035	First floor master bedroom	SE
036	First floor bedroom	W
037	First floor bedroom and bathroom	E
038	First floor bathroom	E
039	First floor bathroom	W
040	First floor looking down the spiral staircase	Vertical



Key:

12 → Photo location and direction

⑤ Room number



Reproduced with the permission of Ordnance Survey on behalf of The Controller of Her Majesty's Stationery Office, © Crown copyright. CFA Archaeology Ltd, Old Engine House, Eskmills Park, Musselburgh EH21 7PQ AL100034785

CFA ARCHAEOLOGY LTD
 Office 5
 Ecclefield Business Centre
 46 Stocks Hill, Ecclefield
 Sheffield, S35 9YT
 T: 0114 327 1108
 M: 07469 853 850
 sheffield@cfa-archaeology.co.uk
 www.cfa-archaeology.co.uk

Title:
 General location map and
 building footprint

Project:
 High Myres Cottage, East
 Renfrewshire Archaeological
 Buildings Appraisal

Client:
 ScottishPower Renewables

Scale at A3:
 1:100

Drawn by: GC	Checked: MC	Date: 05/01/2017
-----------------	----------------	---------------------

Report No: 3512	Fig. No: 1
--------------------	---------------

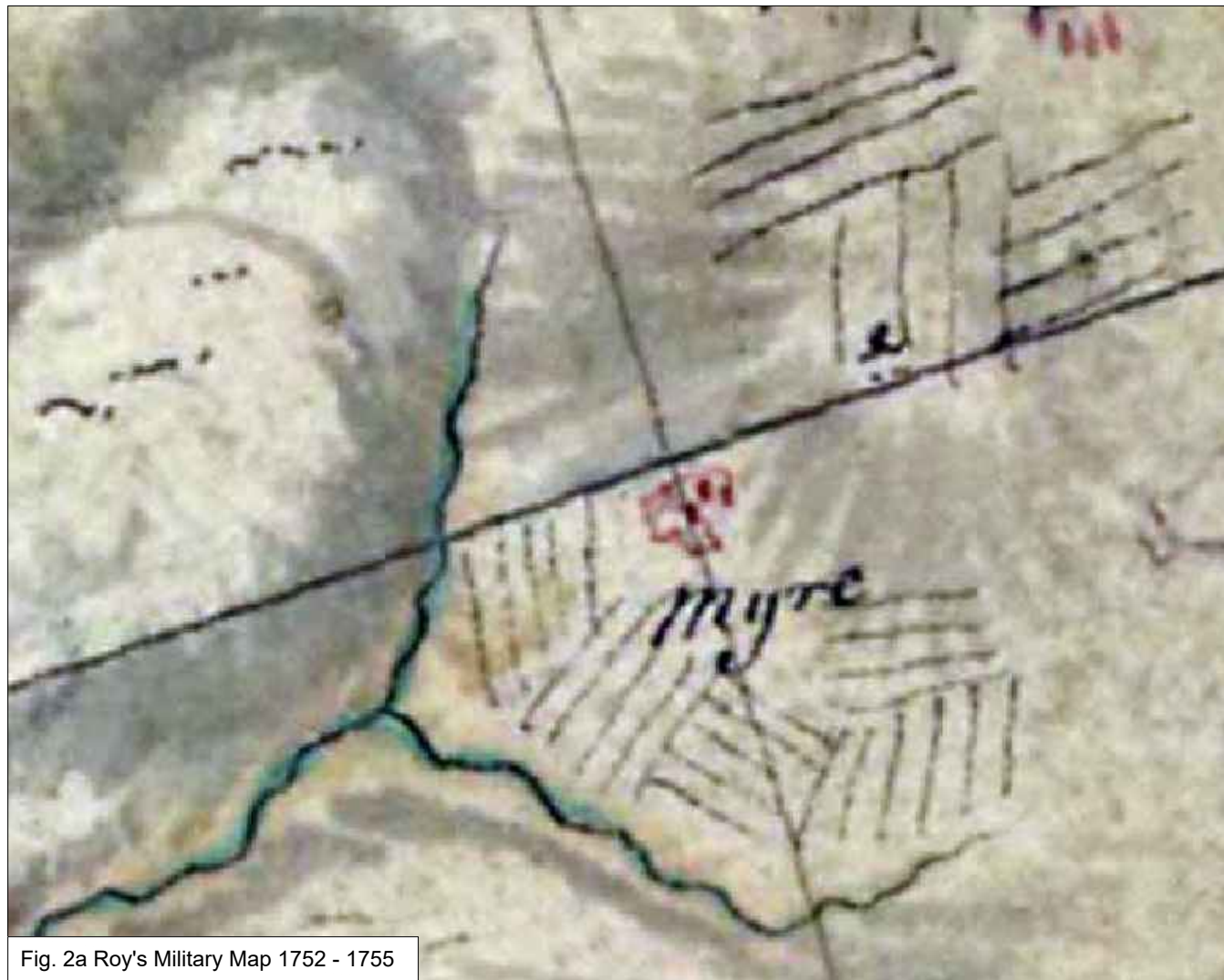


Fig. 2a Roy's Military Map 1752 - 1755



Fig. 2b John Ainslie's Map 1800

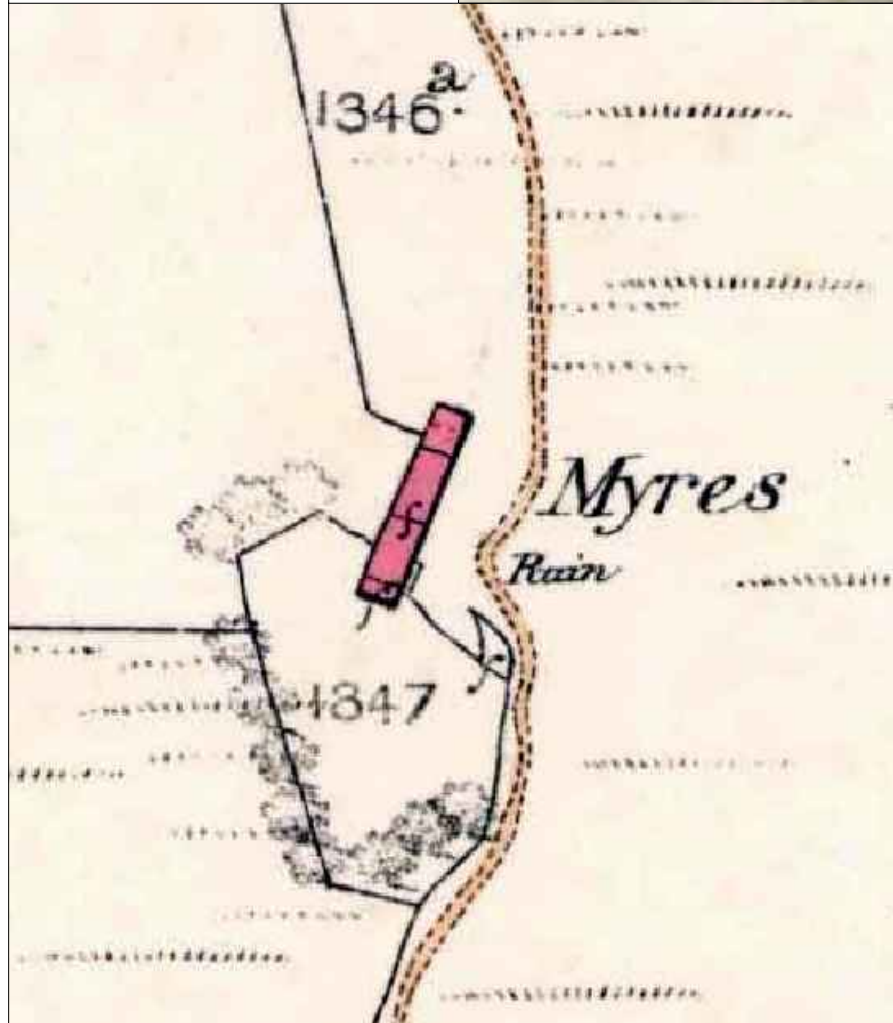


Fig. 2c 1856 Ordnance Survey Map



Fig. 2d 1889 Ordnance Survey Map



Fig. 2e 1958 Ordnance Survey Map

Key:

Reproduced with the permission of Ordnance Survey on behalf of The Controller of Her Majesty's Stationary Office, © Crown copyright. CFA Archaeology Ltd, Old Engine House, Eskmills Park, Musselburgh EH21 7PQ AL100034785

CFA ARCHAEOLOGY LTD
 Office 5
 Ecclefield Business Centre
 46 Stocks Hill, Ecclefield
 Sheffield, S35 9YT
 T: 0114 327 1108
 M: 07469 853 850
 sheffield@cfa-archaeology.co.uk
 www.cfa-archaeology.co.uk

Title:
Historical Map Regression

Project:
High Myres Cottage, East Renfrewshire Archaeological Buildings Appraisal

Client:
ScottishPower Renewables

Scale at A3:
nts

Drawn by:	Checked:	Date:
GC	MC	05/01/2017

Report No:	Fig. No:
3512	2a - 2e



Fig. 3 North-facing elevation of the cottage and garage (012)



Fig. 4 East-facing elevation of the cottage (001)

Project:
High Myres Cottage, East Renfrewshire Archaeological Buildings Appraisal



Client:
ScottishPower Renewables

Drawn by: GC	Checked: MC	Date: 15/02/17
Report No: 3512		Fig. No: 3 - 4



Fig. 5 South-facing elevation of the cottage (005)



Fig. 6 West-facing elevation of the cottage (007)

Project:
High Myres Cottage, East Renfrewshire Archaeological Buildings Appraisal



Client:
ScottishPower Renewables

Drawn by: GC	Checked: MC	Date: 15/02/17
Report No: 3512		Fig. No: 5 - 6



Fig. 7 Room 1 Garage, interior view (030)



Fig. 8 Room 2 Kitchen interior view (026)

Project:
High Myres Cottage, East Renfrewshire Archaeological Buildings Appraisal



Client:
ScottishPower Renewables

Drawn by: GC	Checked: MC	Date: 15/02/17
Report No: 3512		Fig. No: 7 - 8



Fig. 9 Room 3 Hall and spiral staircase (014)



Fig. 10 Room 7 Living Room fire place (022)

Project:
High Myres Cottage, East Renfrewshire Archaeological Buildings Appraisal



CFA ARCHAEOLOGY LTD
The Old Engine House
Eskmills Park
Musselburgh
East Lothian, EH21 7PQ
T: 0131 273 4380
F: 0131 273 4381
info@cfa-archaeology.co.uk
www.cfa-archaeology.co.uk

Client:
ScottishPower Renewables

Drawn by: GC	Checked: MC	Date: 15/02/17
Report No: 3512		Fig. No: 9 - 10



HIMY_001.JPG



HIMY_001.NEF



HIMY_002.JPG



HIMY_002.NEF



HIMY_003.JPG



HIMY_004.JPG



HIMY_005.JPG



HIMY_005.NEF



HIMY_006.JPG



HIMY_006.NEF



HIMY_007.JPG



HIMY_007.NEF



HIMY_008.JPG



HIMY_008.NEF



HIMY_009.JPG



HIMY_009.NEF



HIMY_010.JPG



HIMY_010.NEF



HIMY_011.JPG



HIMY_011.NEF



HIMY_012.JPG



HIMY_013.JPG



HIMY_013.NEF



HIMY_014.JPG



HIMY_014.NEF



HIMY_015.JPG



HIMY_015.NEF



HIMY_016.JPG



HIMY_016.NEF



HIMY_017.JPG



HIMY_017.NEF



HIMY_018.JPG



HIMY_018.NEF



HIMY_019.JPG



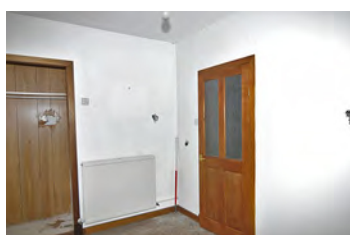
HIMY_019.NEF



HIMY_020.JPG



HIMY_020.NEF



HIMY_021.JPG



HIMY_021.NEF



HIMY_022.JPG



HIMY_022.NEF



HIMY_023.JPG



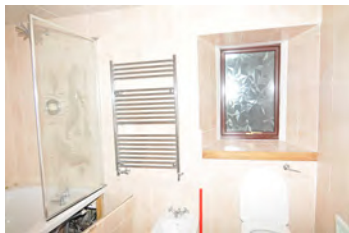
HIMY_023.NEF



HIMY_024.JPG



HIMY_024.NEF



HIMY_025.JPG



HIMY_025.NEF



HIMY_026.JPG



HIMY_026.NEF



HIMY_027.JPG



HIMY_027.NEF



HIMY_028.JPG



HIMY_028.NEF



HIMY_029.JPG



HIMY_029.NEF



HIMY_030.JPG



HIMY_030.NEF



HIMY_031.JPG



HIMY_031.NEF



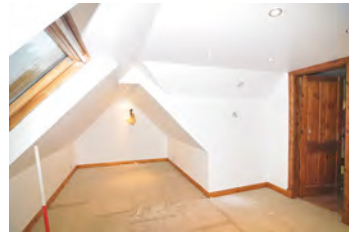
HIMY_032.JPG



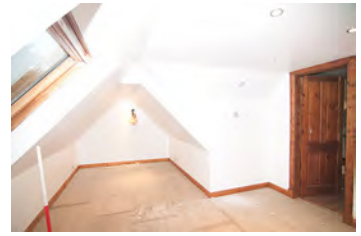
HIMY_033.JPG



HIMY_033.NEF



HIMY_034.JPG



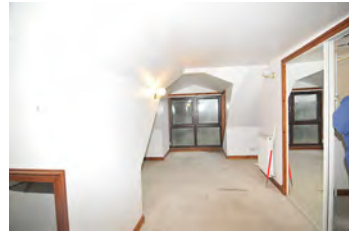
HIMY_034.NEF



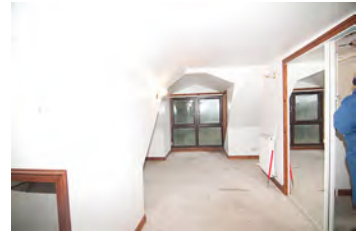
HIMY_035.JPG



HIMY_035.NEF



HIMY_036.JPG



HIMY_036.NEF



HIMY_037.JPG



HIMY_037.NEF



HIMY_038.JPG



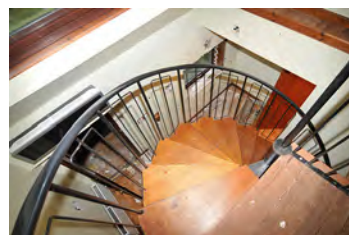
HIMY_038.NEF



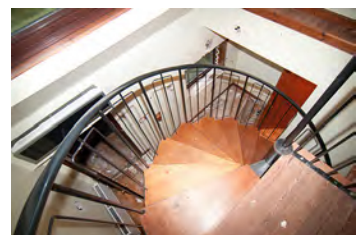
HIMY_039.JPG



HIMY_039.NEF



HIMY_040.JPG



HIMY_040.NEF