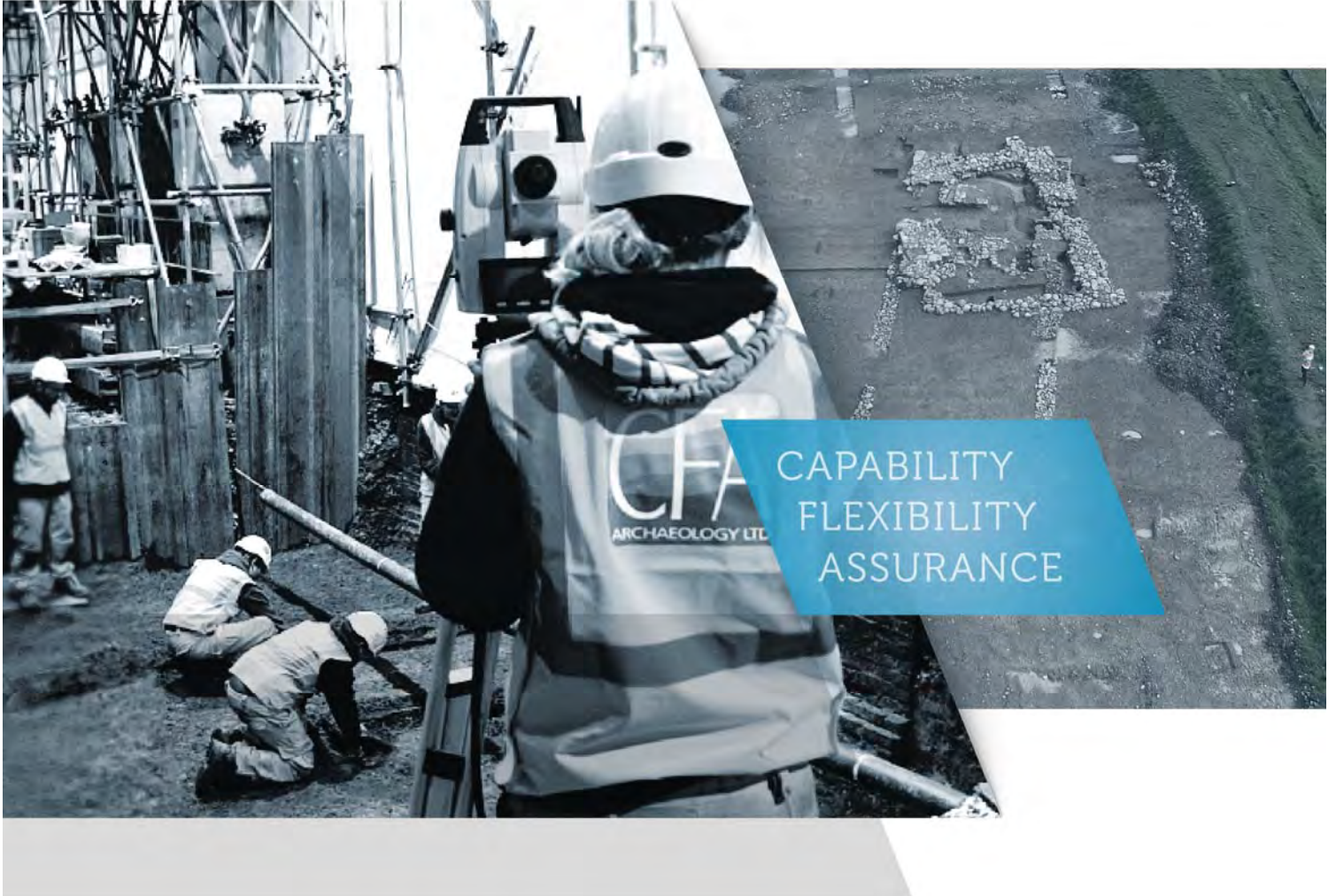




# CFA ARCHAEOLOGY

Professional cultural heritage consultants - branches nationwide  
enquiries@cfa-archaeology.co.uk



Calderwood, East Calder, West Lothian.  
Phase 3 - Areas CWa, LKf, LKh, OSc and  
Valley Park

Archaeological Evaluation  
Report No. 3623

Author: Ian Suddaby MA MCIfA



## **CFA ARCHAEOLOGY LTD**

The Old Engine House  
Eskmills Business Park  
Musselburgh  
East Lothian  
EH21 7PQ

Tel: 0131 273 4380  
Fax: 0131 273 4381  
email: [info@cfa-archaeology.co.uk](mailto:info@cfa-archaeology.co.uk)  
web: [www.cfa-archaeology.co.uk](http://www.cfa-archaeology.co.uk)

Author	Ian Suddaby MA MCifA
Illustrator	Marta Perlinska
Approver	Bruce Glendinning BSc PGDip MifA
Commissioned by	Stirling Developments Ltd
Date issued	January 2018
Version	1
Planning Application No	0524/P/09
Grid Ref	NT 09730 68715 (centre)

This document has been prepared in accordance with CFA Archaeology Ltd standard operating procedures.

**Calderwood, East Calder,  
West Lothian.  
Phase 3 Areas CWa, LKf, LKh, OSc and  
Valley Park**

**Archaeological Evaluation**

**Report No. 3623**

## CONTENTS

1.	Introduction	4
2.	Working Methods	4
3.	Archaeological Results	5
4.	Conclusions	9

## Appendices

1.	Summary of Evaluation Trenches	10
2.	Photographic Register	12
3.	Context Register	16
4.	Field Drawings Register	17
5.	Samples Register	17
6.	Finds Quantification	18

## Illustrations (bound at rear)

Figs. 1a-c Location map and plan of the trenches

Figs. 2a-b Location map and plan of the trenches

Fig. 3 The Western side of Area LKf from the South

Fig. 4 Trench 2 general view from the SSE

Fig. 5 Trench 12 general view from the WSW

Fig. 6 Trench 25, Furrows 006

Fig. 7 Trench 33, furrows

Fig. 8 General view of Area CWa from the North

Fig. 9 General view of Area CWa from the South

Fig. 10 Trench 38, Ditch 3801 East facing section

Fig. 11 Trench 43, Ditches 4301, 4303 pre-excavation

Fig. 12 Trench 47, Pit 4701 pre-excavation from the SE

Fig. 13 Trench 61, Ditch 6101 East facing section

Fig. 14 General view of Area OSc.

Fig. 15 Trench 67, Feature 6701 (015) SE facing section

Fig. 16 Trench 68, Feature 6803 (015) oblique section from the NE

Fig. 17 Trench 68, Feature 6803 (015) oblique section from the East

Fig. 18 Trench 70, Feature 7001 (015) from the West

Fig. 19 The Southern end of Valley Park plot

Fig. 20 The Northern end of Valley Park plot

Fig. 21 Trench 73, Furrows 012 from the SW

Fig. 22 Trench 91, general view from the WSW

Fig. 23 Trench 91, Pit 9101 West facing section

Fig. 24 Trench 91, Pit 9101 post-ex from the SSE

## **1. INTRODUCTION**

### **1.1 General**

This report presents the results of an archaeological evaluation undertaken by CFA Archaeology Ltd (CFA) in December 2017 in part of the Phase 3 development area (Figs. 1-2) of the Calderwood development (0524/P/09). The work was commissioned by Stirling Developments Ltd.

An Addendum (Addendum 2, dated 06/11/2017) to the original Written Scheme of Investigation (WSI) for the phased evaluation of the development was produced by CFA and agreed in advance with WoSAS on behalf of West Lothian Council. Following consultation, the planning authority as advised by WoSAS required an 8% trial trenching sample.

### **1.2 Objectives**

The objectives of the project were:

- To establish the presence/absence, extent, condition, character, quality and date of any archaeological features or deposits within the proposed development area through trial trenching evaluation;
- To establish the vulnerability of any archaeological features to the proposed development;
- To propose mitigation measures where appropriate to avoid, reduce or offset any predicted negative impacts on the archaeological resource.

## **2. WORKING METHODS**

### **2.1 General**

Work was conducted with regard to the Chartered Institute for Archaeologists' (CIfA) *Standard and Guidance for an Archaeological Evaluation* and *Code of Conduct*.

### **2.2 Evaluation Strategy**

An 8% (10,114m<sup>2</sup>) trial trenching evaluation was required by the planning authority as advised by WoSAS and a total of 116 trenches were excavated to provide a total trenched area of 10,892m<sup>2</sup> (Figs. 1-2). Appropriate stand-off zones were maintained around overhead and underground services.

The trenches were excavated by machine under direct archaeological supervision to remove topsoil and other soil deposits down to natural subsoil or the first significant archaeological horizon, whichever was reached first.

Samples of all features of archaeological interest were hand excavated in order to establish their likely date, nature, extent and condition.

All hand excavation and on-site recording was carried out according to standard CFA procedures, principally by drawing, by photography and by completing standard CFA record forms.

Trench locations were recorded using industry standard surveying equipment.

### **3. ARCHAEOLOGICAL RESULTS**

#### **3.1 General**

Only the trenches that contained features other than drains and agricultural furrows are detailed below within the description of each area. Appendix 1 contains a tabulated summary of all the trench dimensions and a description of the features encountered. Numbers in bold and parentheses are context numbers and are described in Appendix 3.

Topsoil (**001**) was generally 0.2-0.4m deep. In many of the trenches it overlay a yellow-brown silty subsoil (**002**). The natural geology (**003**) generally comprised orange-brown/yellow brown clayey-sand, often with large stones present; no bedrock was recorded.

#### **3.2 Areas LKf, LKh (Trenches 1-36), Figs. 1a-b, 3-7.**

Trenches 1-36, with a total area of 3379m<sup>2</sup>, were excavated in these areas, which included parts of two fields separated by a boundary ditch and hedge. This boundary feature is shown in Fig. 3, with the uncultivated area containing Trenches 1-6 in the foreground. To the east of the hedge and ditch (Trenches 7-36) the field is annually cultivated.

Examples of trenches are shown in Figs. 4-7. Agricultural furrows were recorded in Trenches 3, 7-15, 21, 24-25, 28-30 and 34-36. Examples of these are shown in Figs. 6-7. Two different alignments were recorded: furrows **004** were located in the west of the area and ran NE-SW; furrows **006** were located in the east of the area and ran NW-SE. In Trench 11, furrows **004** appeared to cut furrows **006** which had a slightly lighter fill (**007**).

No archaeologically significant features or deposits were identified.

#### **3.3 Area CWa (Trenches 37-62), Figs. 1c, 7-13.**

Trenches 37-62, with a total area of 2470m<sup>2</sup> were excavated in this area.

General views of Area CWa are shown in Figs. 8-9. Agricultural furrows were recorded in Trenches 39-40, 42-48, 50-51 and 56-62. Across the majority of the field, these were aligned ENE-WSW (**008**) but to the south of Ditch **6001/6101**, which was identified in Trenches 60 and 61, they were aligned SSE-NNW (**010**).

In Trench 38 a linear ditch (**3801**) (Fig. 10) was recorded. This feature had a width of 0.7m and a depth of 0.2m. It was filled with a sterile, light orange-brown clay-silt (**3802**). No finds were recovered.

In Trench 43, parallel linear ditches (**4301** & **4303**) (Fig. 11) were recorded. Ditch **4301** had a width of 0.45m and a depth of 0.15m. It was filled with a compact dark brown silty sand (**4302**) which contained modern white-glazed ceramic and glass. Ditch **4303** had a width of 0.55m and a depth of 0.2m. It contained two fills, a primary fill of mid-brown silty sand and stones (**4304**) and an upper fill of brownish-orange silty sand and stones (**4305**).

In Trench 47, a small single pit (**4701**) (Fig. 12) was identified. This feature had a diameter of 0.4m and a depth of 0.45m. It was filled with a dark brown silty sand (**4702**) which contained fragments of modern glazed ceramic and glass.

In Trenches 60 and 61, a ditch feature (**6001** & **6101**) (Fig. 13) was recorded. This feature had a width of 1.6m and a depth of 0.4m. The fill (**6002**, **6102**) was a dark orange-brown sandy silt and it had been cut by a clay pipe field drain (**6103-4**).

### **3.4 Area OSc (Trenches 63-70), Figs. 1b, 14-18.**

Trenches 63-70, with a total area of 696m<sup>2</sup> were excavated in this area which occupies the corner of a large cultivated field (Fig. 14). Clifton Road formed the southern boundary and the unclassified road to Nethershiel Farm formed the western boundary. The field sloped gently to the north.

A general view of Area OSc is shown in Fig. 14. Agricultural furrows were only recorded in Trench 66 (**012**) where they were aligned NNW-SSE.

In Trench 67, the terminal (**6701**) of a feature was recorded. It measured 4m wide by 0.37m deep and had gently sloping sides (Fig. 15). It was filled with dark orange-brown sandy silt (**6702**) from which broken pantile and 18-19C ceramic was recovered.

In Trench 68, what is considered to be an extension of the feature in Trench 67 was identified (**6803**). It was 4m wide by 0.45m deep. It was filled with a charcoal flecked creamy-brown clayey silt (**6804**) containing very frequent cobbles of various sizes (Figs. 16-17). Many of the cobbles were cracked and appeared to have been heat affected and many had lumps of lime mortar adhering to them. This feature had been cut by a stone-filled field drain (**6801**), the fill of which (**6802**) contained similar stones to those in **6804**.

In Trench 70 a feature (**7001**) that was a probable continuation of the feature identified in Trenches 67 and 68 was located. It was 3.75m wide (Fig. 18) and the fill (**7002**) consisted of a yellow-brown silty sand.

The features identified in Trenches 67, 68 and 70 appeared to be a continuation of the same feature although the fills were very mixed and quite different from each other. It was given an overall context number (**015**). The overall size of this feature was not

identified; a terminus was identified in Trench 67 and it did not appear in Trench 69 so it is likely to have been greater than 25m long NE-SW and around 4m wide.

### 3.5 Valley Park Plot (Trenches 71-116), Figs. 2a-b, 19-24.

Trenches 71-116, with a total area of 4347m<sup>2</sup>, were excavated in this area which occupied parts of two fields. The southern area is part of the same field that contained trenches 63-70 and the northern area included a steep-sided gully that led north towards the River Almond. General views of this area are shown in Figs. 19-20.

Agricultural furrows were recorded in Trenches 71-74, 78-82, 84-85, 88, 93-96, 99-100, 102, 105, 108, 110 and 115. In the southern part of this area the furrows were aligned NNW-SSE (**012, 014**) and in the north they were aligned NE-SW (**017**).

In Trench 91 a single pit was recorded and fully excavated. This feature (**9101**) was irregular in plan, with one very straight side, and measured 1.1m in length, 0.7m in width and 0.25m in depth. It contained a single fill (**9102**) which consisted of a grey silt with what appeared to be degraded charcoal. There were several stones and stone fragments, some of which were reddened and may have been heated. No finds were recovered.

### 3.6 Finds, by Christina Hills

A summary of the finds assemblage is presented in Table 1 and catalogued by context in Appendix 6.

Find type	Spotdate	No.	Wt (g)
Animal bone	-	81	1868
Shell	-	1	2
Ceramic Building Material	18-20 <sup>th</sup>	8	274
Clay pipe	18-20 <sup>th</sup>	1	2
Glass	18-20 <sup>th</sup>	21	989
Iron	18-20 <sup>th</sup>	3	811
Pottery	16-17 <sup>th</sup>	69	1293
	18-20 <sup>th</sup>	28	167
<i>Pottery Total</i>		97	1460

#### *Animal Bone and Shell*

Animal bone was recovered from Trenches 68 (**6802, 6804**) and 70 (**7002**). An oyster shell was recovered from Trench 68 (**6804**).

#### *Ceramic Building Material*

Redware tile fragments were recovered from Trenches 70 (**7002**) and 67 (**6702**). A piece of white earthenware tile came from Trench 68, context **6802**. These are post-medieval in date.



### *Clay pipe*

A single small bowl fragment was recovered from Trench 68, context **6804**. This is 18-19<sup>th</sup> century in date.

### *Glass*

Green bottle glass fragments were recovered from **6702**, **6802** and **6804**, with the largest quantity coming from **6804** (Trench 68). A single fragment of clear glass, probably window pane, was also found in **6804**. These are post-medieval or modern.

### *Metal*

An iron tapered bar was recovered from Trench 70 (**7002**). Sheet iron fragments from the same object were found in **6804** (Trench 68). These are post-medieval or modern.

### *Pottery*

Pottery was recovered from Trenches 67 (**6702**), 68 (**6802**, **6804**) and 70 (**7002**). The vast majority of the pottery came from **6802** and **6804**.

The pottery from Trenches 67 and 70 was post-medieval earthenware. The pottery from Trench 68 was a mixture of post-medieval earthenwares and late 16<sup>th</sup>-17<sup>th</sup> century Scottish post-medieval reduced/oxidised wares with green glaze, with the latter being dominant. Large portions of at least 3 vessels were present, including a strap handle, the ridged neck of a jug, and body sherds with curvilinear incised decoration on the glaze. The sherds were fresh with unabraded breaks.

#### 4. CONCLUSIONS

Overall, 116 evaluation trenches were excavated which covered 10,892m<sup>2</sup>, slightly more than 8% of the Phase 3 areas scheduled for evaluation.

No features other than furrows and field drains were recorded in Areas LKf and LKh.

Four linear ditch features and a pit were recorded in Area CWa. Three of the linear features appear to be land boundaries depicted on the OS First Edition map (Edinburghshire Sheet 4, 1853). The fourth was of an unknown age but appears not to be a significant feature and was likely agricultural in origin. The small pit was a recent feature based on the finds. Furrows and field drains were recorded in most trenches.

What appears to be a single large feature was recorded in Area OSc. Although the nature of the deposits contained in each of the three trenches where it was present differed, this may well be a single feature. The finds assemblage was, like the fills, very mixed and clean breaks were present on some of the sherds. It also contained quantities of rubble, some with mortar adhering to them. It was not a particularly regular or deep feature and the mix of finds and rubble suggest that this might have been a simple depression, be it natural or manmade, that had been infilled with rubbish probably derived from the nearby farm. Some of the pottery was post-medieval and 16<sup>th</sup> -17<sup>th</sup> century in date but the sherds exhibited fresh breaks (not from our excavation) so had obviously been re-deposited from somewhere. Furrows were uncommon in this area although field drains were widespread.

A single probable pit feature was recorded in the Valley Park plot. Although irregular in plan and suggestive of a stone-hole, the fill was indicative of a more anthropogenic origin as it contained charcoal and what appeared to be heated stones. Furrows and field drains were recorded in most trenches.

Based on the results of the evaluation CFA recommend no further work, however, it is recognised that the final decision lies with West Lothian Council as advised by WoSAS.

The project archive, comprising all CFA record sheets, maps and reports will be deposited with the NHRE and copies of reports will be lodged with the West Lothian Council SMR.

A summary statement of the results of this evaluation will be submitted for publication in *Discovery and Excavation in Scotland* and an online OASIS entry submitted on completion of the project.

## APPENDIX 1: Summary of Evaluation Trenches

Trench No.	Size	Depth of deposits	Description
1	50x1.8m	0.35m topsoil over 0.1m - 0.15m subsoil.	Field Drains
2	57x1.8m	0.35m topsoil over 0.1m subsoil	Field Drains
3	50x1.8m	0.35m topsoil over 0.1m subsoil	Furrows & field drains
4	50x1.8m	0.35m-0.5m; 0.4m topsoil +0.1 subsoil	Field Drains
5	50x1.8m	Topsoil 0.40m NE - 0.57m SW	Field Drains
6	50x1.8m	Topsoil 0.48m NE - 0.38m SW	Field Drains
7	50x2.1m	Topsoil 0.3m topsoil over 0.1m subsoil	3 furrows
8	50x1.8m	Topsoil 0.3m topsoil over 0.1m subsoil	2 furrows
9	50x2.1m	0.3m topsoil	1 furrow
10	50x2.1m	Topsoil 0.3m topsoil over 0.1m subsoil	1 furrow
11	50x1.8m	0.3m topsoil	2x furrows + field drains
12	50x1.8m	0.3m topsoil	5 x furrows & field drains
13	50x2.1m	0.3m topsoil	4x furrows + field drains
14	30x2.1m	0.3m topsoil	1 furrow + 1 field drain
15	50x2.1m	0.3m topsoil	1x furrow & field drains
16	50x1.8m	0.3m topsoil	Field drains
17	50x1.8m	0.3m topsoil	Field drains
18	50x1.8m	0.3m topsoil	Field drains
19	50x2.1m	N/A	Field drains
20	50x2.1m	0.52m NE - 0.36m SW	Field drains
21	30x2.1m	0.3m topsoil over 0.1m subsoil	1 x furrows+ field drains
22	45x1.8m	0.3m topsoil over 0.1m subsoil	Field drains
23	50x1.8m	0.3m topsoil	1 x furrow & field drains.
24	50x2.1m	0.3m topsoil	Furrows + field drains
25	50x2.1m	0.3m topsoil	8 x Furrows+ field rains
26	50x1.8m	0.35m topsoil	Field drains
27	50x1.8m	0.3m topsoil over 0.1m subsoil	No archaeology
28	50x1.8m	0.3m topsoil	Furrows + field drains
29	50x2.1m	0.3m topsoil	1x furrow + 2x field drains
30	50x1.8m	0.3m topsoil	3 x furrows and field drains
31	50x2.1m	Topsoil 0.30m SE - 0.32m NW	Field drains
32	40x2.1m	0.35m topsoil	1x cobble stone drain
33	35x1.8m	Topsoil 0.34m SE - 0.32m NW	Field drains
34	50x1.8m	0.35m topsoil	2 x furrows, 3x ceramic land drains
35	50x2.1m	Topsoil 0.45m N - 0.46m S	1 x furrow + field drains
36	50x2.1m	Topsoil 0.32m SWW - 0.46m NEE	7x Furrows + 5x ceramic land drains
37	50x1.8m	0.3m topsoil	No archaeology
38	50x2.1m	0.3m topsoil over 0.2m subsoil	1x Ditch [3801]
39	50x1.8m	0.3m topsoil over 0.2m subsoil	2x furrows + various field drains
40	50x2.1m	0.3m topsoil	1x furrow + field drains
41	22x1.8m	0.3m topsoil over 0.2m subsoil	No archaeology + 1 field drain
42	50x2.1m	0.3m topsoil	1x furrow
43	30x2.1m	0.3m topsoil	2x parallel linear ditches (4301, 4303)
44	50x2.1m	0.3m topsoil over 0.2m subsoil	Field drains
45	50x2.1m	0.3m topsoil	4x furrows
46	50x1.8m	0.3m topsoil	2x furrows
47	50x1.8m	0.3m topsoil over 0.1m subsoil	1x pit (4701). 4x furrows
48	50x1.8m	0.3m topsoil	1x furrow
49	50x2.1m	0.3m topsoil	No archaeology.
50	50x1.8m	0.3m topsoil over 0.2m subsoil	1x furrow + field drains

<b>Trench No.</b>	<b>Size</b>	<b>Depth of deposits</b>	<b>Description</b>
51	50x2.1m	0.3m topsoil over 0.2m subsoil	1x furrow cut by field drains
52	50x1.8m	0.3m topsoil over 0.1m subsoil	No archaeology
53	50x2.1m	0.3m topsoil over 0.1-0.05m subsoil	No archaeology.
54	50x2.1m	0.3m topsoil over 0.2m subsoil	Field drains
55	50x2.1m	0.3m topsoil	No archaeology
56	30x1.8m	0.3m topsoil over 0.2m subsoil	4x furrows
57	50x2.1m	0.3m topsoil over 0.2m subsoil	No furrows
58	30x1.8m	0.3m topsoil over 0.2m subsoil	2x furrows + numerous field drains
59a	50x1.8m	0.3m topsoil	3x furrows + drains
59b	50x1.8m	0.3m topsoil	Field drains
60	50x1.8m	0.38m topsoil	4x furrows + drains
61	50x1.8m	0.30m topsoil over 0.05m subsoil	2x furrows & field drains
62	50x2.1m	0.3m topsoil over 0.1m subsoil	2x furrows
63	50x1.8m	Topsoil 0.36m SW - 0.40m NE	Field drains
64	50x2.1m	0.69m topsoil	Field drains
65	50x2.1m	0.59m topsoil	Field drains
66	50x1.8m	0.37m topsoil	3x furrows & field drains
67	50x1.8m	0.50m topsoil	Large cut feature 6701
68	50x1.8m	Topsoil 0.47m NW - 0.37m SE	4m wide post-medieval feature 6802 containing numerous finds and stones with lime mortar adhering
69	50x2.1m	Topsoil 0.32m topsoil + 0.18m subsoil	Field drains
70	10x2.1m	N/A	Same feature 7001 as that in Tr68
71	50x2.1m	Topsoil 0.3m topsoil over 0.2m subsoil	4x furrows + field drains
72	50x2.1m	Topsoil 0.3m topsoil over 0.1m subsoil	1x furrow
73	50x2.1m	0.38m topsoil	7x furrows
74	50x2.1m	0.38m topsoil	6x furrows + field drains
75	50x2.1m	0.38m topsoil	1x furrow
76	50x2.1m	0.50m topsoil	Field drains
77	50x2.1m	0.38m topsoil	field drains
78	50x2.1m	0.38m topsoil	Furrows + field drains
79	50x2.1m	0.40m topsoil	Furrows + field drains
80	50x2.1m	Topsoil 0.40 S - 0.34m N	Furrows + field drains
81	50x1.8m	0.32m topsoil	Furrows + field drains
82	50x1.8m	Topsoil 0.48m W - 0.90m E	9x furrows
83	50x2.1m	Topsoil 0.53m E - 0.72m E	5x furrows + 6x land drains
84	50x2.1m	Topsoil 0.38m S - 0.34m N	Furrows
85	50x2.1m	Topsoil 0.47m S - 0.42m N	Furrows + field drains
86	50x1.8m	Topsoil 0.44m S - 0.42m N	2x furrows + field drains
87	24x2.1m	0.35m topsoil over 0.25m subsoil	Field drains.
88	27x1.8m	Topsoil 0.36m E - 0.38m W	3x furrows + field drains
89	30x1.8m	0.3m topsoil over 0.1m subsoil	No archaeology
90	50x1.8m	Topsoil 0.32m W - 0.38m E	Field drain
91	50x1.8m	0.34m topsoil	1x probable pit [9101] + 2x possible furrows
92	50x1.8m	0.3m topsoil	No archaeology
93	40x2.1m	0.3m topsoil over 0.2m subsoil in mid trench	3x furrows
94	50x2.1m	0.35m topsoil over 0.1m subsoil	Furrows + field drains
95	50x2.1m	0.35m topsoil	1x furrow + field drains
96	50x2.1m	Topsoil 0.29m E - 0.35m W	2x furrows
97	50x2.1m	Topsoil 0.36m S - 0.38m N	No archaeology
98	50x1.8m	0.3m topsoil	No archaeology
99	50x1.8m	0.30m topsoil	Land drains + furrows
100	50x1.8m	0.30m topsoil	Land drains + furrows

Trench No.	Size	Depth of deposits	Description
101	50x2.1m	Topsoil 0.30m S - 0.30m N	Land drains + furrows + plough scars
102	50x2.1m	Topsoil 0.38m S - 0.36m N	1x furrow + field drains
103	50x2.1m	Topsoil 0.38m S - 0.44m N	No archaeology
104	50x2.1m	0.38m topsoil	Field drains
105	50x2.1m	Topsoil 0.35m - 0.3m topsoil	1x furrow
106	50x2.1m	0.35m topsoil	Field drains
107	40x1.8m	0.35m topsoil	field drains.
108	40x2.1m	0.35m topsoil over 0.20m subsoil	2x furrows
109	40x1.8m	0.5m topsoil over 0.2m orange-brown subsoil	field drain
110	50x2.1m	0.42m topsoil	4x furrows
111	50x2.1m	0.35m topsoil over 0.3m subsoil	No archaeology
112	50x1.8m	0.42m topsoil	No archaeology
113	50x1.8m	0.32-0.38m topsoil over 0.05-0.23-0.08m subsoil	Field drains
114	50x2.1m	0.38m topsoil	2x furrows
115	40x2.1m	0.35m topsoil over 0.10m subsoil	No archaeology
116	25x1.8m	0.38m topsoil over 0.04m subsoil	No archaeology

## APPENDIX 2: Photographic Register

Shot No.	Summary description of subject	Facing
1-3	The SW end of area LKf	NE
4	Tr1 soil section at SE end	NNE
5	Tr1 General View	NW
6-7	Tr2 General View	N
8	Tr3 General View	NNW
9	Tr3, example of furrow	NNW
10-11	Tr4 General View	NW
12	Tr4 profile at NW end	NE
13	Tr6 General View	ENE
14	Tr6 Plough scores at WSW end	ENE
15	Tr5 General View	ENE
16-18	Area LKf, NE end pre-ex	NE
19	Tr8 Section	N/A
20	Tr7 General View	NW
21	Tr7 Furrows at NW end	NW
22	Tr7 Furrow in plan view	SW
23	Tr8 General View	ENE
24	Tr8 Furrow	NE
25	Tr9 General View	SSE
26-28	Tr9 Possible feature – proved not to be on excavation	SSE
29	Tr9 General View	NNW
30	Tr10 General View	NNW
31	Tr10 Possible feature – proved not to be on excavation	E
32	Tr11 General View	ENE
33	Tr12 General View	WSW
34	Tr13 furrow	S
35	Tr13 General View	N
36	Tr14 General View	S
37	Tr15 General View	S
38-40	Tr16 Possible features – proved not to be on excavation	S

<b>Shot No.</b>	<b>Summary description of subject</b>	<b>Facing</b>
41	Tr16 General View	NNW
42	Tr 17 General View	NNW
43	Tr17 Possible feature – proved not to be on excavation	NW
44	Tr18 General View	NNW
45-46	Tr19 General View	WSW
47-49	Tr25 Furrows	Various
50	Tr20 General View	WSW
51	Tr21 General View	ENE
52	Tr22 General View	NNW
53	Tr23 General View	N
54	Tr24 General View	SW
55	Tr24 Furrow 006 + drain	NNW
56	Tr24 Furrows 006 at ENE end	ENE
57-58	Tr25 General View	ENE
59	Tr25 soil profile at ENE end	SSE
60	Tr26 General View	ENE
61	Tr27 General View	ENE
62	Tr27 Soil profile at WSW end	NNW
63	Tr28 General View	N
64	Tr29 General View	NNW
65	Tr30 General View	ENE
66-67	Tr30 Possible feature – proved not to be on excavation	ENE
68	Tr31 General View	SSE
69	Tr36 General View	WNW
70-71	Tr36 Furrow examples	W
72	Tr36 drain base	W
73	Tr35 General View	ENE
74	Tr 32 General View	SSE
75	Tr33 General View	SSE
76	Tr33 furrow (006)	NW/NNW
77-78	Tr34 General View	S
79-80	Tr25 Section through representative furrow	SSE
81	Tr 25 Furrow in plan	SSE
82-83	Tr 25 furrow oblique view of section	WSW
84	Tr37 General View of area CWa	NNW
85-86	Area CWa General View	SSE+SSW
87-88	Tr42 Copper service pipe	NNW
89	Tr38 General View	SSE
90	Tr38 Ditch 3801	SSE
91	Tr39 General View	SSW
92	Tr39 Furrow 008	WSW
93	Tr40 General View	W
94	Tr41 General View	NNW
95-96	Area CWa General View	N+E
97	Tr42 General View	NNW
98	Tr42 Water Pipe	W
99	Tr42 Furrow	NNW
100	Tr42 Possible feature – proved not to be on excavation	E
101	Tr42 Possible feature – proved not to be on excavation	E
102	Tr42 Possible feature – proved not to be on excavation	SSE
103	Tr43 General View	NNE
104	Tr44 Plough Score	SSW
105	Tr44 General View	SSW
106	Tr44 Possible feature – proved not to be on excavation	
107	Tr45 General View	SSE
108	Tr47 Pit 4701	NW

<b>Shot No.</b>	<b>Summary description of subject</b>	<b>Facing</b>
109	Tr48 General View	ENE
110	Tr49 General View	WSW
111	Tr62 General View	SW
112	Tr47 Pit 4701 Section	SE
113	Tr38 Ditch 3801 Section	W
114-115	Tr61 East facing section of ditch 6101	W
116	Tr61 Oblique shot of section of ditch 6101	NW
117	Tr50 General View	WSW
118	Tr52 General View	ENE
119	Tr53 General View	WSW
120	Tr54 General View	S
121	Tr43 Ditch 4301 plan view	W
122	Tr43 Ditch 4301 section	N
123	Tr43 Ditch 4303 plan view	E
124	Tr43 Ditch 4303 section	S
125	Tr56 General view	SSE
126	Tr57 General view	NNW
127	Tr58 General view	SSE
128-134	Area CWa, general views	Various
135	Tr59 General view	N
136	Tr57 General view	NNW
137-140	Area OSc, general views	Various
141	Tr63 General view	NE
142	Tr64 General view	NW
143	Tr69 General view	NW
144	Tr66 General view	NW
145	Tr65 General view	ENE
146	Tr67 General view	NW
147	Tr67 SE facing section of feature 015	NW
148	Tr67 SE facing section of feature close-up	NW
149	Tr67 oblique views of section	N
150	Tr67 SW facing section	NE
151	Tr70 General view	NW
152	Tr70 oblique view	E
153	Tr68 mid-ex shot of feature	W
154	Tr70 SW facing trench profile	NE
155	Tr68 General view	SE
156	Tr68 General view	NW
157	Tr68, NE facing section including feature	SW
158	Tr68 oblique view of feature	W
159	Tr68 feature in plan	
160-162	Area CWa, general view	Various
163	Tr68 NE facing section	SW
164	Tr68 oblique view of section	NW
165	Tr68 oblique view of section	SW
166	Tr68 NE facing section	SW
167	Tr68 oblique view of section	W
168	Tr68 oblique view of section	W
169	Tr68, close-up of later cut of feature	W
170	Tr68, slot view following removal of stones from 015	W
171	Tr68 oblique view following removal of stones	W
172	Tr68 close-up of section	W
173	Tr71 General view of Valley Park plot	S
174	Tr72 General view	SSE
175	Tr73 General view	ENE
176	Tr73 furrows 012	NE

<b>Shot No.</b>	<b>Summary description of subject</b>	<b>Facing</b>
177	Tr73 furrows 012	NNW
178	Tr75 General view	NNW
179	Tr76 General view	NNW
180	Tr77 General view	E
181	Tr78 General view	E
182	Tr79 General view	NE
183	Tr86 General view	NE
184	Tr85 General view	NE
185	Tr84 General view	NE
186	Tr80 General view	NE
187	Tr81 General view	W
188	Tr82 General view	E
189	Tr83 General view	W
190	Tr83 General view	E
191	Tr88 General view	W
192	Tr89 General view	SE
193	Tr87 General view	WNW
194-199	General site views, Tr71-89	Various
200	Tr87 soil profile	NNE
201	Tr90 General view	WSW
202	Tr90 General view	ENE
203	Tr93 General view	ENE
204-205	General site views, Tr93-97 area	N/NNW
206	Tr94 General view	N
207	Tr94 soil profile	W
208	Tr95 General view	N
209	Tr96 General view	WSW
210	Tr91 pre-ex view of feature 9101	NE
211	Tr91 pre-ex view of feature 9101	NW
212	Tr96 furrow	NE
213	Tr97 General view	N
214	Tr103 General view	N
215	Tr102 General view	NNW
216	Tr101 General view	NNW
217	Tr100 General view	ENE
218	Tr93 furrow at NE end of trench 014	NE
219	Tr100 General view	E
220	Tr99 General view	E
221	Tr91 W facing section pit 9101	W
222	Tr91 W facing section pit 9101	W
223	Tr91 pit 9101 plan view	
224-225	Tr109 flooded	Various
226-227	Tr112-115, General views	SE
228	Tr112 General view	S
229	Tr113 General view	NNE
230	Tr116 General view	W
231	Tr114 General view	S
232	Tr115 General view	E
233	Tr110 General view	S
234-235	Tr109 General views	ENE
236-240	General site views	Various
241	Tr109 General view	WSW
242	Tr111 General view	NNW
243	Tr111 General view	ENE
244	Tr104 General view	WSW
245	Tr92 General view	SSE



Shot No.	Summary description of subject	Facing
246	Tr91 pit 9101 post-ex	NNW
247	Tr91 pit 9101 post-ex	WSW
248	Tr107 General view	NNW
249	Tr107 soil profile	WSW
250	Tr107 whinstone boulders at NNW end	SSE
251	Tr106 General view	N
252	Tr105 General view	N
253	Tr98 General view	E
254	Tr90 General view	WSW
255	Tr91 General view	ENE
256	General view of Tr90-91 area	NE
257	Tr45 General view	SSE
258	Tr46 General View	SE

### APPENDIX 3: Context Register

Context no.	Fill of	Type	Description
001		Deposit	Topsoil
002		Deposit	Subsoil. Orange-brown sandy clay-silt, stones
003		Deposit	Natural. Very varied across the site but in general it was a orange-grey firm silty sand with areas of more yellow-orange clayey sand and stones
004		Cut	Furrow cuts NE-SW. Cuts 006
005	004	Fill	Fills. Light-mid orange-brown sandy clay silt, small stones
006		Cut	Furrow cuts NW-SE. Cut by 004
007	006	Fill	Fills. As 005 but slightly darker
008		Cut	Cut of furrows ENE - WSW
009	008	Fill	Light-mid orange-brown sandy clay silt, small stones
010		Cut	Cut for furrows Tr62
011	010	Fill	Light-mid orange-brown sandy clay silt, small stones
012		Cut	Cut for furrows, Area 4 + Area 1 NNW - SSE
013	012	Fill	Light-mid orange-brown sandy clay silt, small stones
014		Cut	Cut for furrows, stubble, Area 1
015		Cut	Overall cut context number for the large feature in Tr70, Tr67, Tr68
016	014	Fill	Fill of 014.
017		Cut	Cut for furrows NE-SW
018	017	Fill	Light brown sandy clay silt
3801		Cut	Cut for ditch
3802	3801	Fill	Light orange-brown clay-silt
4201		Cut	Cut for linear ditch (=4301?)
4202	4201	Fill	As 4302
4301		Cut	Cut for linear ditch (=4201?)
4302	4301	Fill	Compact dark brown silty sand + stone. Modern pot + glass
4303		Cut	Cut for linear ditch
4304	4303	Fill	Mid-brown-orange silty sand & stones
4305	4303	Fill	Brownish-orange silty sand & stones
4701		Cut	Cut for post-hole Tr47
4702	4701	Fill	Dark brown sandy silt. Modern pot + glass
6001		Cut	Cut for former field boundary ditch
6002	6001	Fill	Dark orange-brown sandy clay silt
6101		Cut	Cut for former field boundary ditch
6102	6101	Deposit	Dark orange-brown sandy clay silt

<b>Context no.</b>	<b>Fill of</b>	<b>Type</b>	<b>Description</b>
6103		Cut	Cut for clay pipe field drain
6104		Deposit	Fill of drain
6701		Cut	Terminal of cut feature possibly aligned with feature in Tr 68 and 70
6702	6701	Fill	Dark orange brown sandy silt
6801		Cut	Cut for probable field drain
6802	6801	Fill	Fill of probable drain. Varied sizes of cobbles, some appearing heated and with lime mortar adhering
6803		Cut	Cut of feature possibly aligned with that in Tr 67 and 70.
6804	6803	Fill	Fill of feature. Pale creamy brown friable clayey silt with charcoal flecks, sandstone fragments and frequent volcanic cobbles, many appearing to be heated and some with lime mortar adhering
7001		Cut	Cut for probable feature aligns with that in Trench 70
7002	7001	Fill	Creamy yellow brown silty sand with frequent animal bones
9101		Cut	Cut for possible pit
9102	9101	Fill	Grey silt, degraded charcoal and possibly heated stones and stone fragments

#### **APPENDIX 4: Drawings Register**

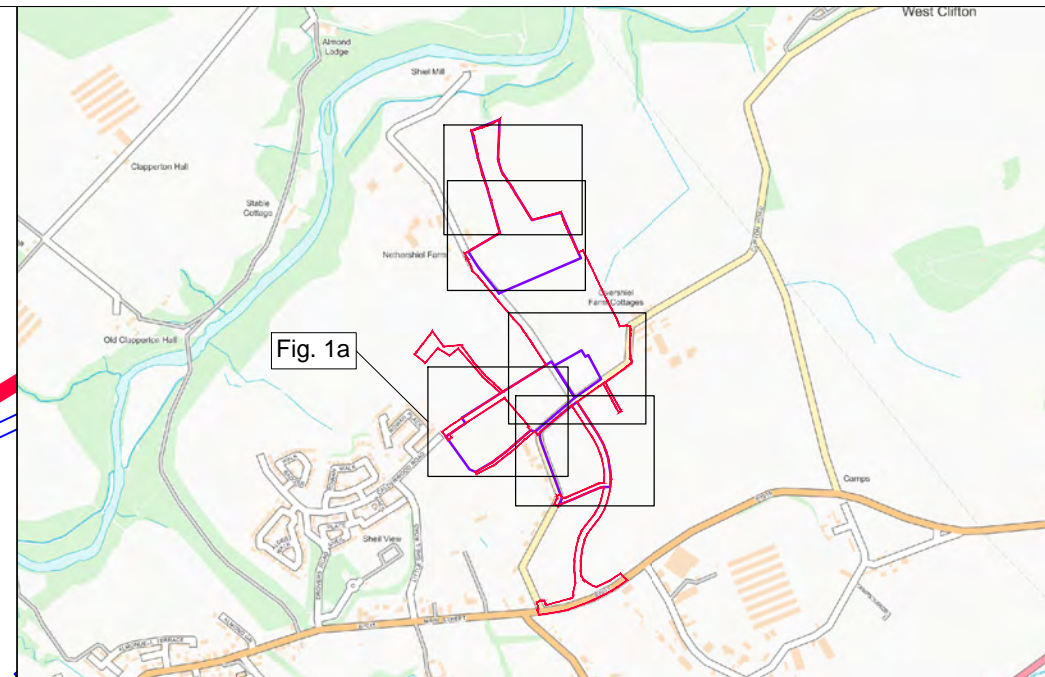
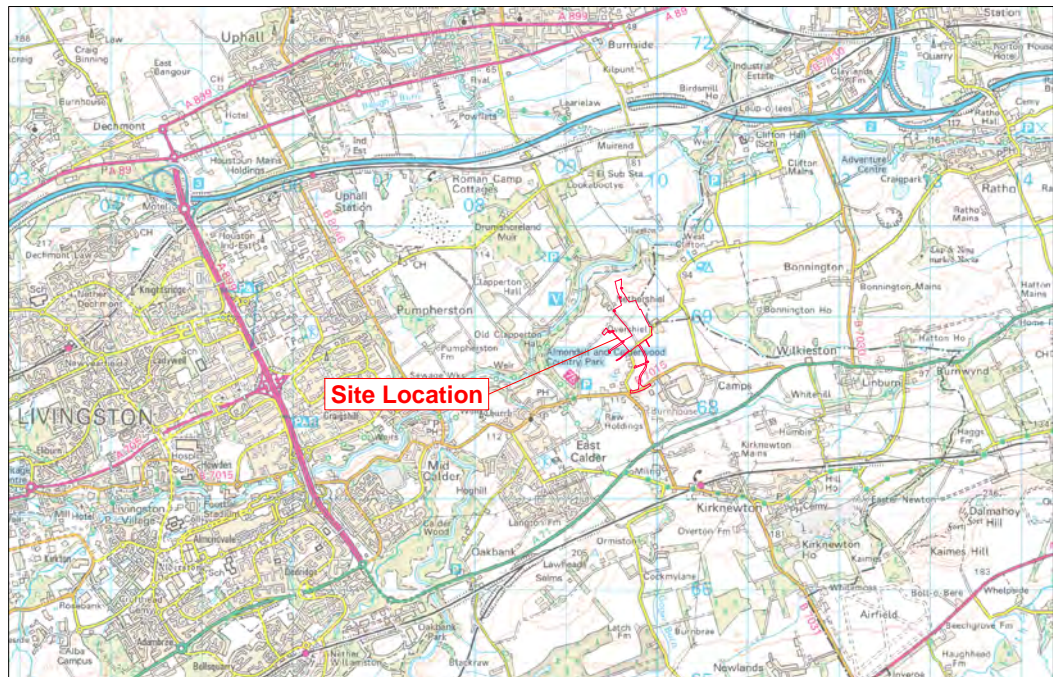
<b>Dwg No.</b>	<b>Sheet No.</b>	<b>Scale</b>	<b>Plan / Section</b>	<b>Description/contexts</b>
1	1	01:20	Section	NE facing section of feature [6803] (6804) cut by [6801] (6802)
2	Trench Sheet T91	01:10	Section	NE facing section of potential fire pit [9101] filled by (9102)
3	1	01:20	Plan	WSW-ENE facing plan of potential firepit [9101] filled by (9102)

#### **APPENDIX 5: Samples Register**

<b>Sample No.</b>	<b>Context</b>	<b>Fill of</b>	<b>Sample type</b>	<b>Volume</b>
1	6802	6801	Bulk	10L Bucket
2	9102	9101	Bulk	10L Bucket

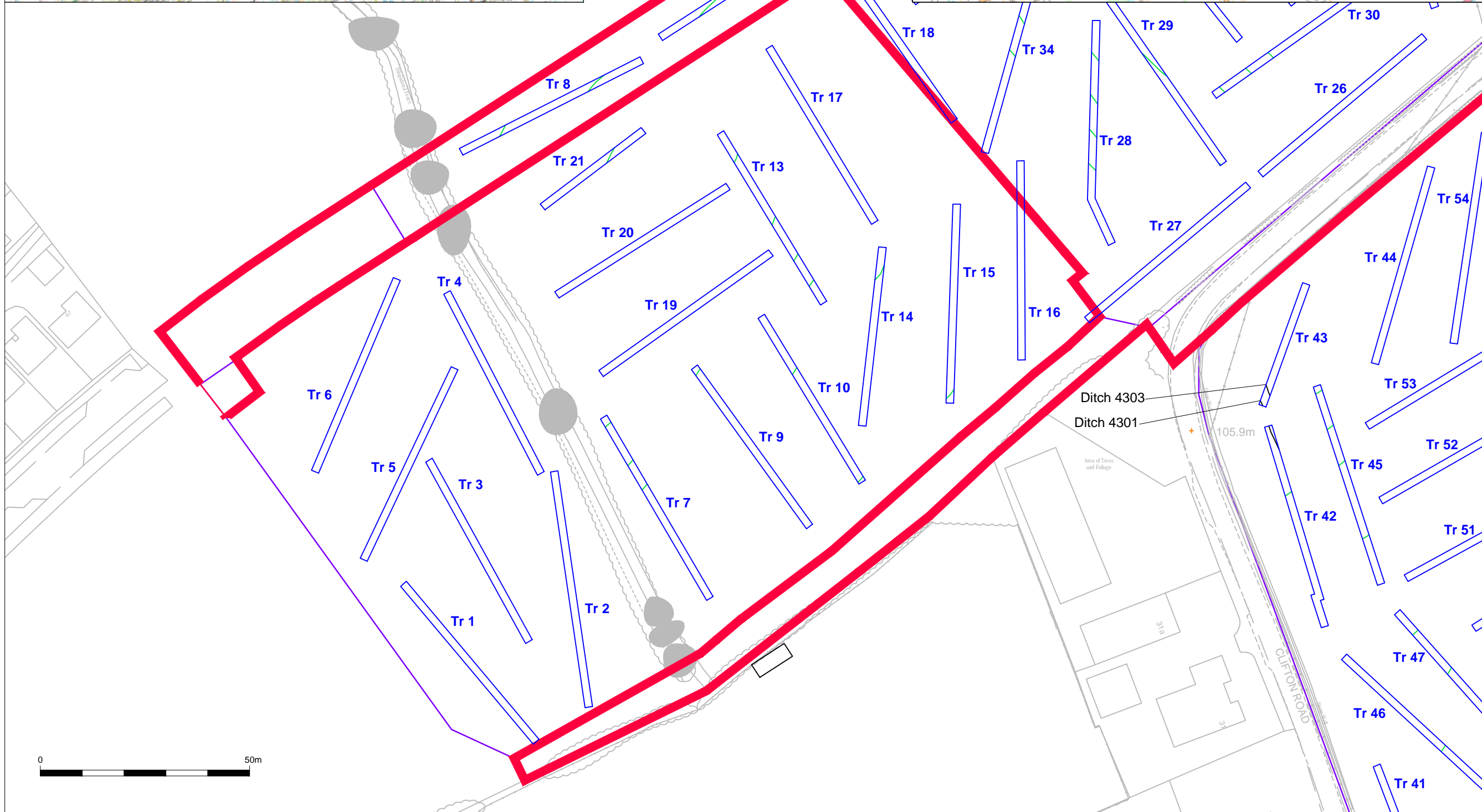
## APPENDIX 6: Finds Quantification

Trench	Context	Find type	No.	Wt (g)	Notes	Spotdate
70	7002	Animal bone	6	77		
70	7002	Animal bone	19	1143		
70	7002	Ceramic Building Material	1	33	Tile. Redware	18-20
70	7002	Pottery	3	14	Red earthenware	18-20
70	7002	Pottery	1	5	White earthenware	18-20
70	7002	Iron	1	127	Bar- tapers, square in section	18-20
67	6702	Ceramic Building Material	6	206	Tile. Redware	18-20
67	6702	Pottery	5	3	White earthenware	18-20
67	6702	Glass	1	9	Green bottle	18-20
68	6802	Animal bone	1	7		
68	6802	Glass	1	17	Green bottle	18-20
68	6802	Ceramic Building Material	1	35	White earthenware tile	18-20
68	6802	Pottery	7	16	White earthenware	18-20
68	6802	Pottery	10	103	Red earthenware	18-20
68	6802	Pottery	11	88	Scottish post-medieval reduced/oxidised	16-17
68	6802-6804	Pottery	57	1204	Scottish post-medieval reduced/oxidised	16-17
68	6804	Iron	2	684	Sheets- part of 1 object	18-20
68	6804	Shell	1	2	Oyster	
68	6804	Clay pipe	1	2	Bowl fragment	18-19
68	6804	Pottery	2	26	Red earthenware	18-20
68	6804	Pottery	1	1	Scottish post-medieval reduced/oxidised	16-17
68	6804	Glass	18	962	Green bottle	18-20
68	6804	Glass	1	1	Clear flat	18-20
68	6804	Animal bone	55	641		



Key:

- Development Area
- Areas of Archaeological Investigation
- Trench Outline
- Archaeological Feature
- Ridge and Furrow
- Field Drain



Reproduced with the permission of Ordnance Survey on behalf of The Controller of Her Majesty's Stationery Office, © Crown copyright. CFA Archaeology Ltd, Old Engine House, Eskmills Park, Musselburgh EH21 7PQ AL100034785



CFA ARCHAEOLOGY LTD  
The Old Engine House  
Eskmills Park  
Musselburgh  
East Lothian, EH21 7PQ  
T: 0131 273 4380  
F: 0131 273 4381  
info@cfa-archaeology.co.uk  
www.cfa-archaeology.co.uk

Title:  
**Location map and plan of the trenches**

Project:  
**Calderwood, East Calder, West Lothian. Phase 3 Areas CWa, LKf, LKh, OSc and Valley Park**

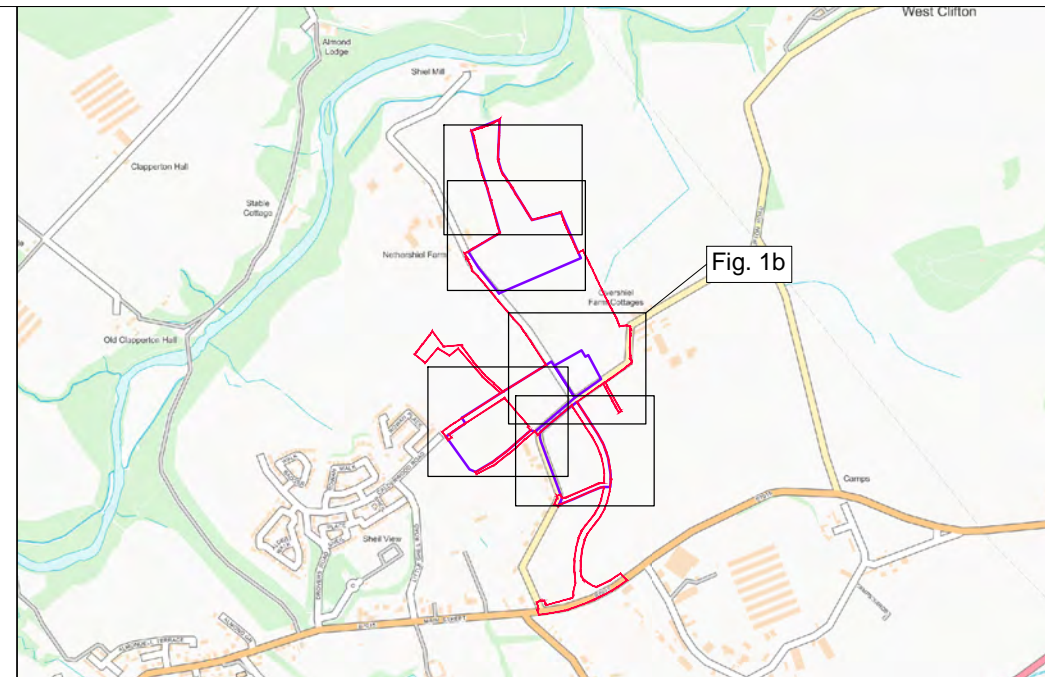
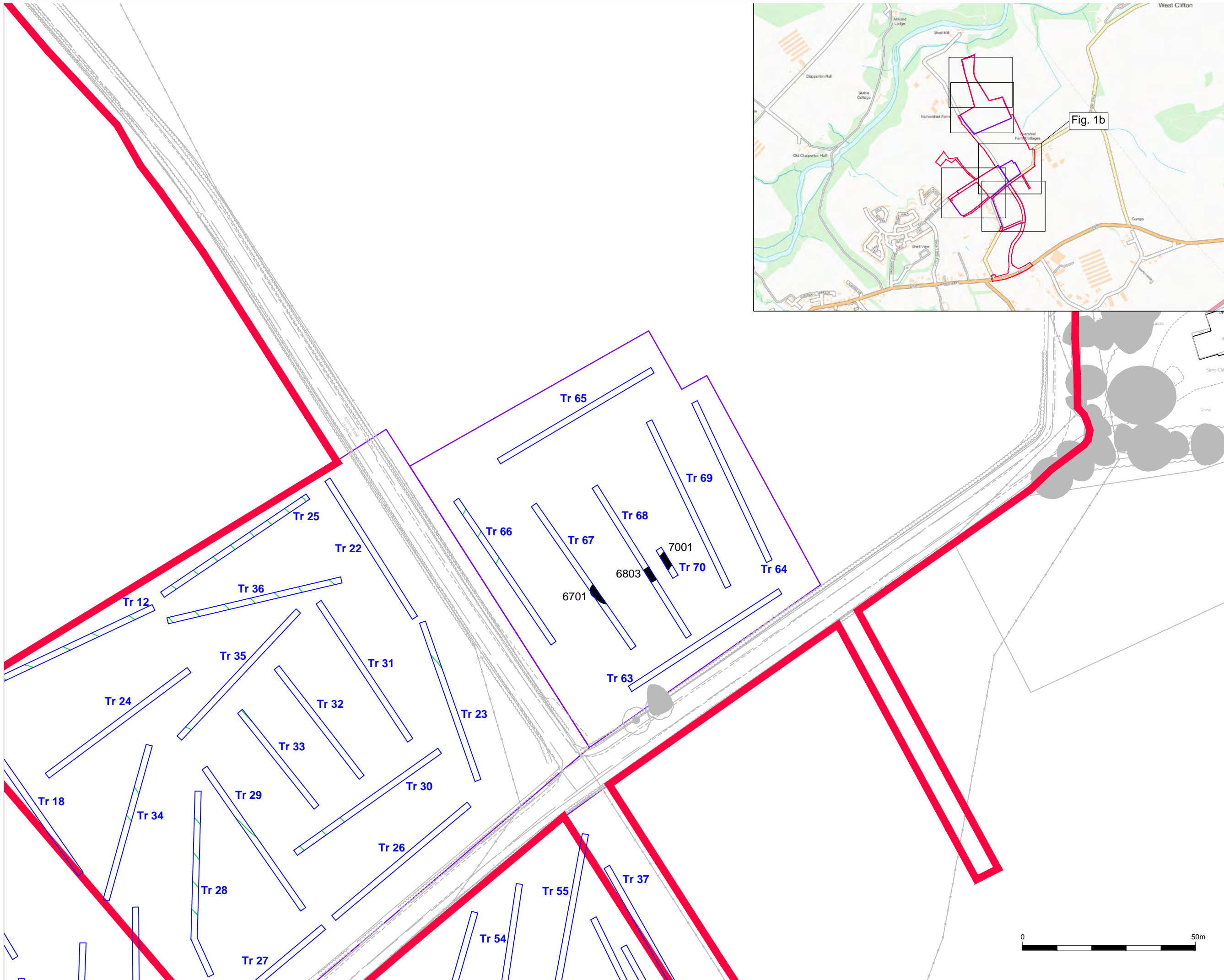
Client:  
**Stirling Developments Ltd**

Scale at A3:  
**1:1000**

Drawn by: <b>MP</b>	Checked by: <b>SW</b>	Date: <b>09/01/2018</b>
------------------------	--------------------------	----------------------------

Report No: <b>3623</b>	Fig. No: <b>1a</b>
---------------------------	-----------------------





- Key:**
- Development Area
  - Areas of Archaeological Investigation
  - Trench Outline
  - Archaeological Feature
  - Ridge and Furrow
  - Field Drain



Reproduced with the permission of Ordnance Survey on behalf of The Controller of Her Majesty's Stationery Office, © Crown copyright. CFA Archaeology Ltd, Old Engine House, Eskmills Park, Musselburgh EH21 7PQ AL100034785



**CFA**  
ARCHAEOLOGY LTD

CFA ARCHAEOLOGY LTD  
The Old Engine House  
Eskmills Park  
Musselburgh  
East Lothian, EH21 7PQ  
T: 0131 273 4380  
F: 0131 273 4381  
info@cfa-archaeology.co.uk  
www.cfa-archaeology.co.uk

Title:  
**Location map and plan of the trenches**

Project:  
**Calderwood, East Calder, West Lothian. Phase 3 Areas CWa, LKf, LKh, OSc and Valley Park**

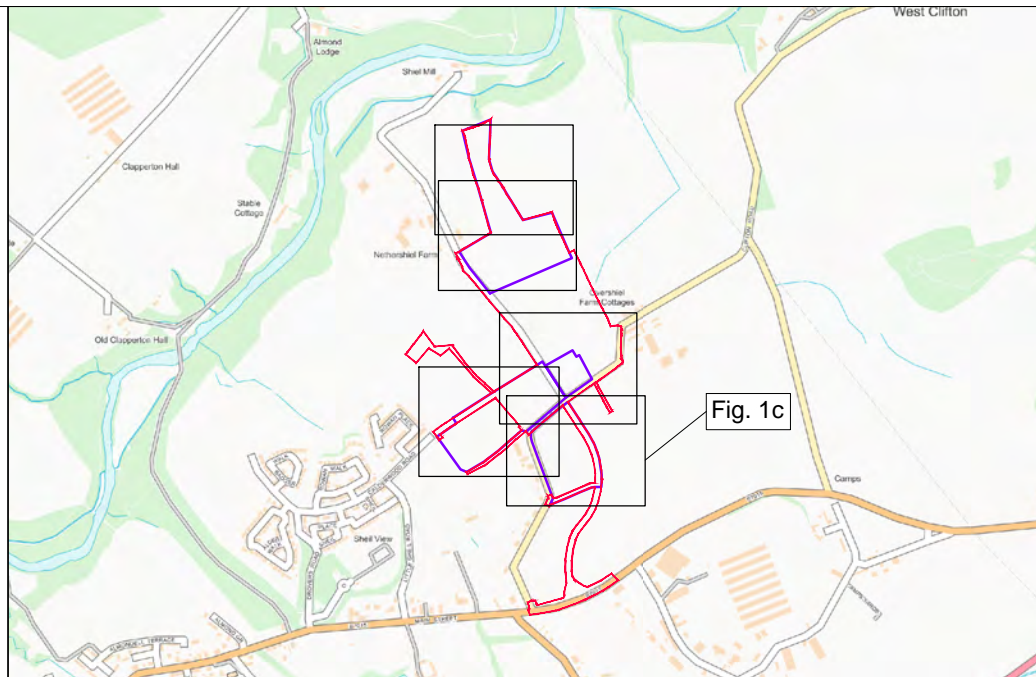
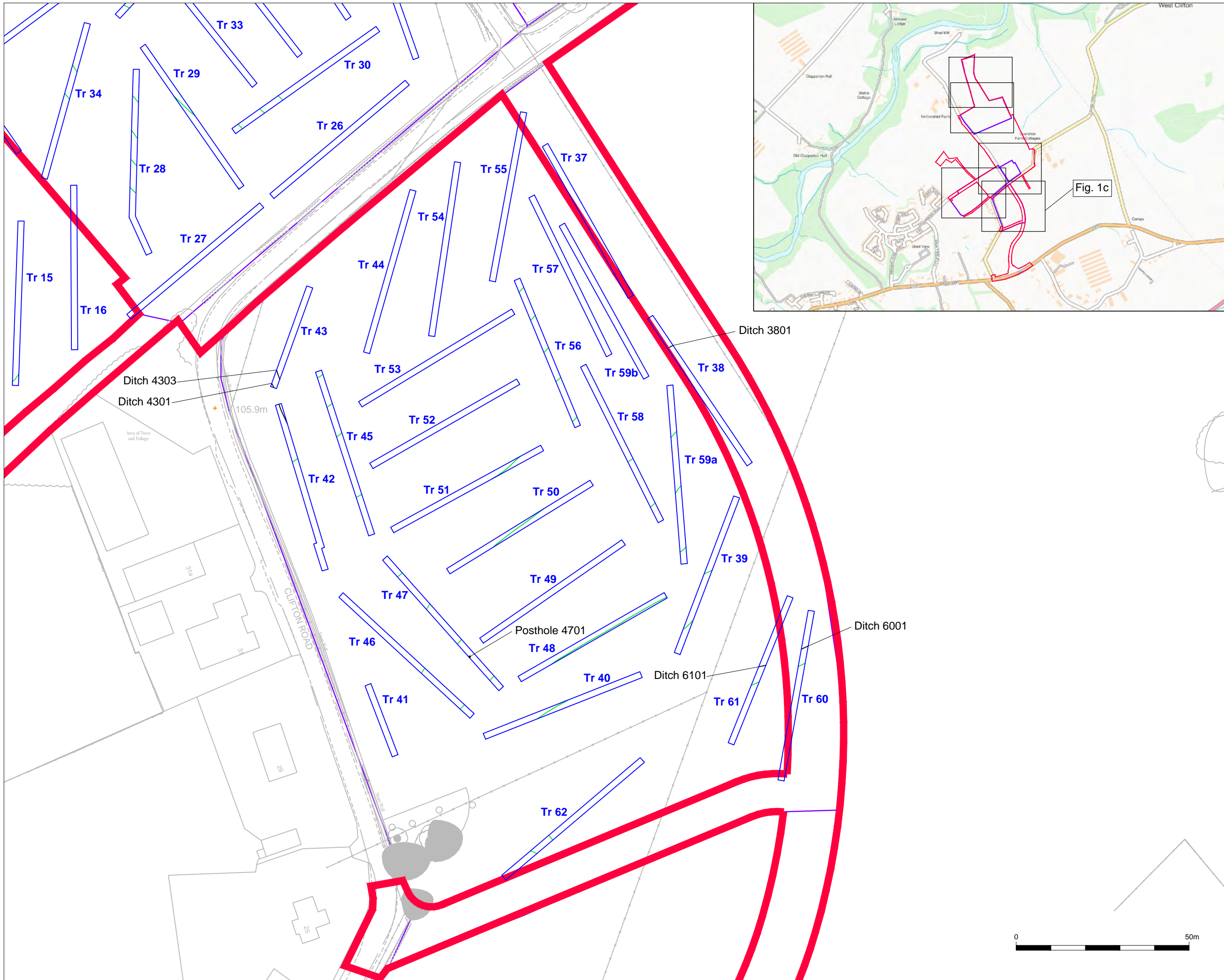
Client:  
**Stirling Developments Ltd**

Scale at A3:  
**1:1000**

Drawn by: <b>MP</b>	Checked by: <b>SW</b>	Date: <b>09/01/2018</b>
------------------------	--------------------------	----------------------------

Report No: <b>3623</b>	Fig. No: <b>1b</b>
---------------------------	-----------------------





- Key:**
- Development Area
  - Areas of Archaeological Investigation
  - Trench Outline
  - Archaeological Feature
  - Ridge and Furrow
  - Field Drain



Reproduced with the permission of Ordnance Survey on behalf of The Controller of Her Majesty's Stationery Office, © Crown copyright. CFA Archaeology Ltd, Old Engine House, Eskmills Park, Musselburgh EH21 7PQ AL100034785

**CFA** ARCHAEOLOGY LTD  
 The Old Engine House  
 Eskmills Park  
 Musselburgh  
 East Lothian, EH21 7PQ  
 T: 0131 273 4380  
 F: 0131 273 4381  
 info@cfa-archaeology.co.uk  
 www.cfa-archaeology.co.uk

Title:  
**Location map and plan of the trenches**

Project:  
**Calderwood, East Calder, West Lothian. Phase 3 Areas CWa, LKf, LKh, OSc and Valley Park**

Client:  
**Stirling Developments Ltd**

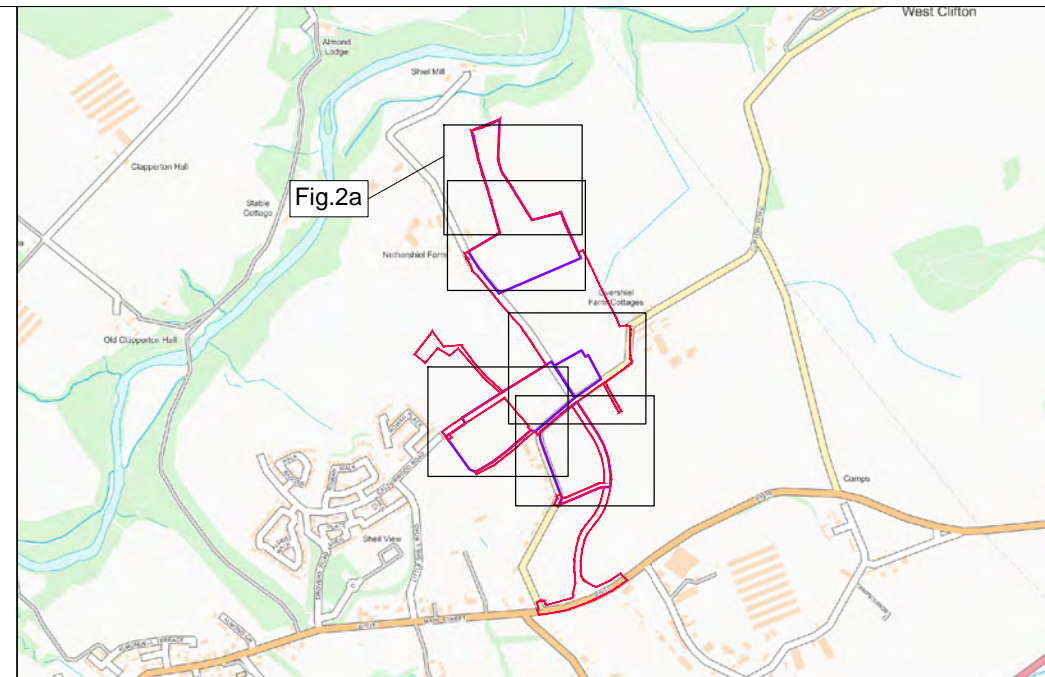
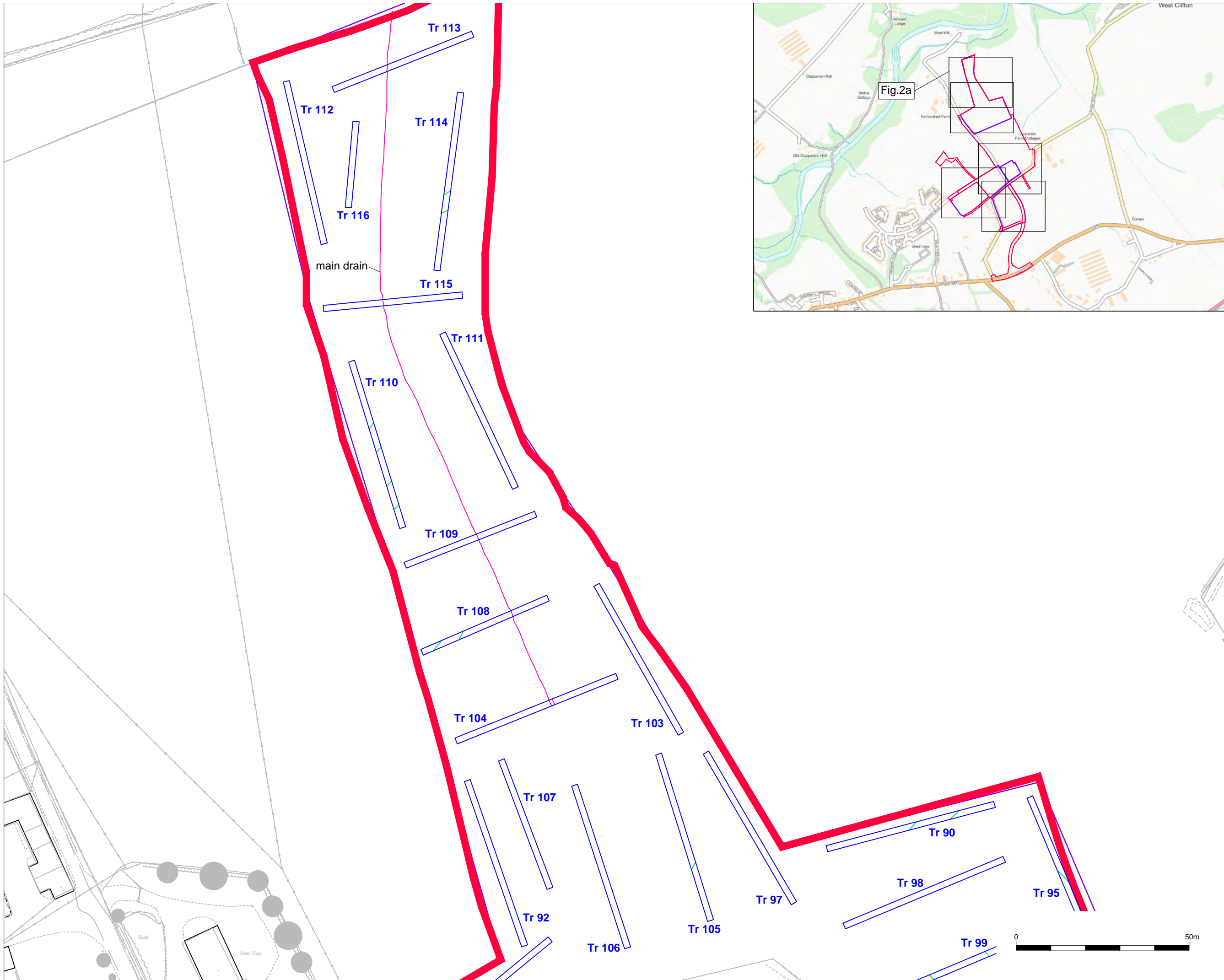
Scale at A3:  
**1:1000**

Drawn by: <b>MP</b>	Checked: <b>SW</b>	Date: <b>09/01/2018</b>
------------------------	-----------------------	----------------------------

Report No.: <b>3623</b>	Fig. No.: <b>1c</b>
----------------------------	------------------------







**Key:**

- Development Area
- Areas of Archaeological Investigation
- Trench Outline
- Archaeological Feature
- Ridge and Furrow
- Field Drain

Reproduced with the permission of Ordnance Survey on behalf of The Controller of Her Majesty's Stationery Office, © Crown copyright. CFA Archaeology Ltd, Old Engine House, Eskmills Park, Musselburgh EH21 7PQ AL100034785

**CFA** ARCHAEOLOGY LTD  
 The Old Engine House  
 Eskmills Park  
 Musselburgh  
 East Lothian, EH21 7PQ  
 T: 0131 273 4380  
 F: 0131 273 4381  
 info@cfa-archaeology.co.uk  
 www.cfa-archaeology.co.uk

Title:  
**Location map and plan of the trenches**

Project:  
**Calderwood, East Calder, West Lothian. Phase 3 Areas CWa, LKf, LKh, OSc and Valley Park**

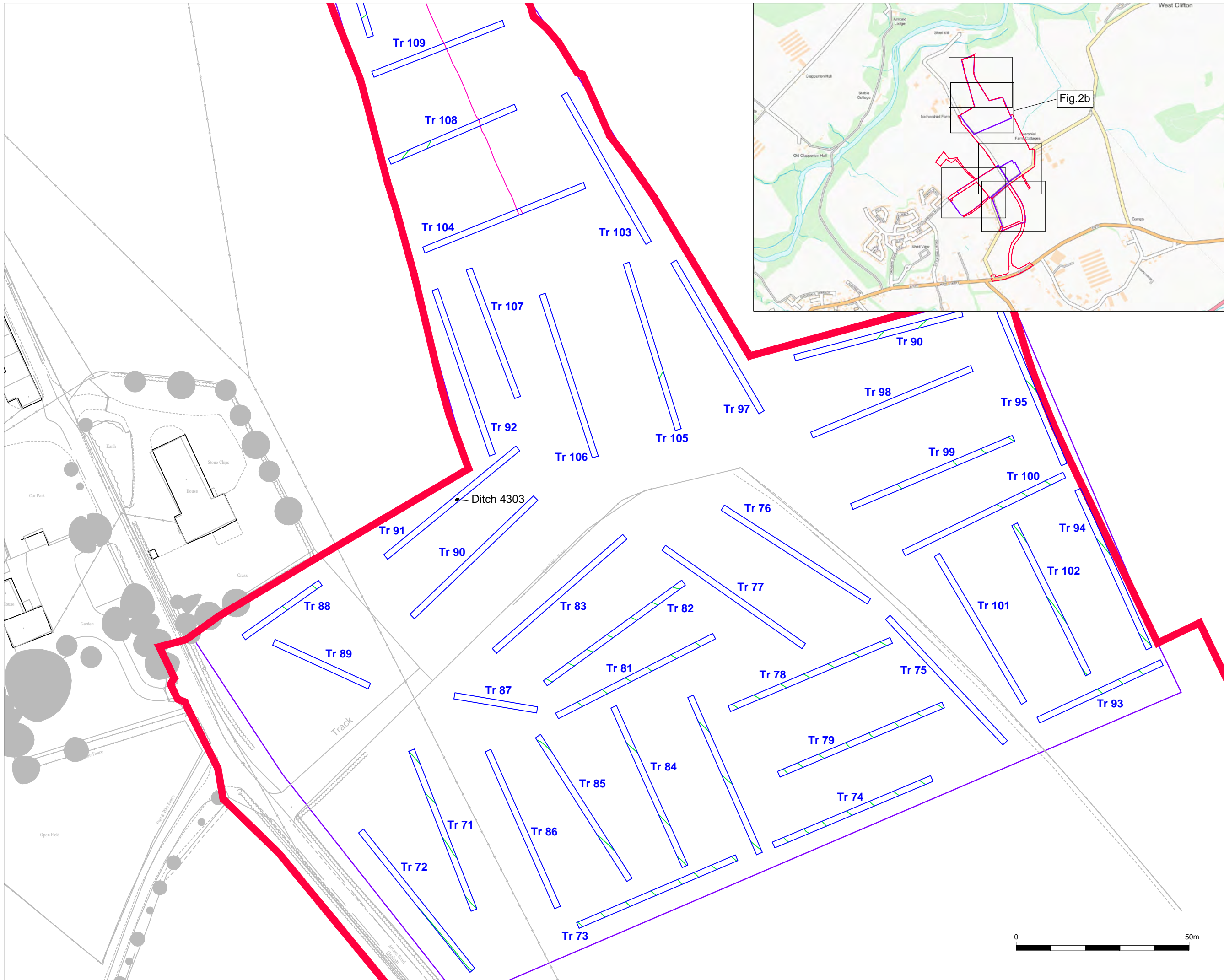
Client:  
**Stirling Developments Ltd**

Scale at A3:  
**1:1000**

Drawn by: MP	Checked: SW	Date: 09/01/2018
-----------------	----------------	---------------------

Report No: 3623	Fig. No: 2a
--------------------	----------------





**Key:**

- Development Area
- Areas of Archaeological Investigation
- Trench Outline
- Archaeological Feature
- Ridge and Furrow
- Field Drain

Reproduced with the permission of Ordnance Survey on behalf of The Controller of Her Majesty's Stationery Office, © Crown copyright. CFA Archaeology Ltd, Old Engine House, Eskmills Park, Musselburgh EH21 7PQ AL100034785



**CFA**  
ARCHAEOLOGY LTD

CFA ARCHAEOLOGY LTD  
The Old Engine House  
Eskmills Park  
Musselburgh  
East Lothian, EH21 7PQ  
T: 0131 273 4380  
F: 0131 273 4381  
info@cfa-archaeology.co.uk  
www.cfa-archaeology.co.uk

Title:  
**Location map and plan of the trenches**

Project:  
**Calderwood, East Calder, West Lothian. Phase 3 Areas CWa, LKf, LKh, OSc and Valley Park**

Client:  
**Stirling Developments Ltd**

Scale at A3:  
**1:1000**

Drawn by: <b>MP</b>	Checked: <b>SW</b>	Date: <b>09/01/2018</b>
------------------------	-----------------------	----------------------------

Report.No: <b>3623</b>	Fig. No: <b>2b</b>
---------------------------	-----------------------







Fig. 3 - The Western side of Area LKf from the South



Fig. 4 - Trench 2 general view from the SSE

Project:  
Calderwood, East Calder, West Lothian. Phase 3 Areas CWa, LKf, LKh, OSc and Valley Park



**CFA ARCHAEOLOGY LTD**  
The Old Engine House  
Eskmills Park  
Musselburgh  
East Lothian, EH21 7PQ  
T: 0131 273 4380  
F: 0131 273 4381  
info@cfa-archaeology.co.uk  
www.cfa-archaeology.co.uk

Client:  
**Stirling Developments Ltd**

Drawn by: <b>MP</b>	Checked: <b>SW</b>	Date: <b>08/01/18</b>
Report No: <b>3623</b>		Fig. No: <b>3-4</b>





Fig. 5 - Trench 12 general view from the WSW



Fig. 6 - Trench 25, Furrows 006

Project:  
Calderwood, East Calder, West Lothian. Phase 3 Areas CWa, LKf, LKh, OSc and Valley Park



**CFA ARCHAEOLOGY LTD**  
The Old Engine House  
Eskmills Park  
Musselburgh  
East Lothian, EH21 7PQ  
T: 0131 273 4380  
F: 0131 273 4381  
info@cfa-archaeology.co.uk  
www.cfa-archaeology.co.uk

Client:  
**Stirling Developments Ltd**

Drawn by: <b>MP</b>	Checked: <b>SW</b>	Date: <b>08/01/18</b>
Report No: <b>3623</b>		Fig. No: <b>5-6</b>





Fig. 7 - Trench 33 Furrows



Fig. 8 - General view of Area CWA from the North

Project:  
Calderwood, East Calder, West Lothian. Phase 3 Areas CWA, LKf, LKh, OSc and Valley Park



**CFA ARCHAEOLOGY LTD**  
The Old Engine House  
Eskmills Park  
Musselburgh  
East Lothian, EH21 7PQ  
T: 0131 273 4380  
F: 0131 273 4381  
info@cfa-archaeology.co.uk  
www.cfa-archaeology.co.uk

Client:  
**Stirling Developments Ltd**

Drawn by: <b>MP</b>	Checked: <b>SW</b>	Date: <b>08/01/18</b>
Report No: <b>3623</b>		Fig. No: <b>7-8</b>





Fig. 9 - General view of Area CWa from the South



Fig. 10 - Trench 38, Ditch 3801 East facing section

Project:  
Calderwood, East Calder, West Lothian. Phase 3 Areas CWa, LKf, LKh, OSc and Valley Park



**CFA ARCHAEOLOGY LTD**  
The Old Engine House  
Eskmills Park  
Musselburgh  
East Lothian, EH21 7PQ  
T: 0131 273 4380  
F: 0131 273 4381  
info@cfa-archaeology.co.uk  
www.cfa-archaeology.co.uk

Client:  
**Stirling Developments Ltd**

Drawn by: <b>MP</b>	Checked: <b>SW</b>	Date: <b>08/01/18</b>
Report No: <b>3623</b>		Fig. No: <b>9-10</b>





Fig. 11 - Trench 43, Ditches 4301, 4303 pre-excitation



Fig. 12 - Trench 47, Pit 4701 pre-excitation from the SE

Project:  
Calderwood, East Calder, West Lothian. Phase 3 Areas CWa, LKf, LKh, OSc and Valley Park



**CFA ARCHAEOLOGY LTD**  
The Old Engine House  
Eskmills Park  
Musselburgh  
East Lothian, EH21 7PQ  
T: 0131 273 4380  
F: 0131 273 4381  
info@cfa-archaeology.co.uk  
www.cfa-archaeology.co.uk

Client:  
**Stirling Developments Ltd**

Drawn by: <b>MP</b>	Checked: <b>SW</b>	Date: <b>08/01/18</b>
Report No: <b>3623</b>		Fig. No: <b>11-12</b>





Fig. 13 - Trench 61, Ditch 6101 East facing section



Fig. 14 - General view of Area OSc

Project:  
Calderwood, East Calder, West Lothian. Phase 3 Areas CWa, LKf, LKh, OSc and Valley Park



**CFA ARCHAEOLOGY LTD**  
The Old Engine House  
Eskmills Park  
Musselburgh  
East Lothian, EH21 7PQ  
T: 0131 273 4380  
F: 0131 273 4381  
info@cfa-archaeology.co.uk  
www.cfa-archaeology.co.uk

Client:  
**Stirling Developments Ltd**

Drawn by: <b>MP</b>	Checked: <b>SW</b>	Date: <b>08/01/18</b>
Report No: <b>3623</b>		Fig. No: <b>13-14</b>



Fig. 15 - Trench 67, Feature 6701 (015) SE facing section



Fig. 16 - Trench 68, Feature 6803 (015) oblique section from the NE

Project:  
Calderwood, East Calder, West Lothian. Phase 3 Areas CWa, LKf, LKh, OSc and Valley Park



**CFA ARCHAEOLOGY LTD**  
The Old Engine House  
Eskmills Park  
Musselburgh  
East Lothian, EH21 7PQ  
T: 0131 273 4380  
F: 0131 273 4381  
info@cfa-archaeology.co.uk  
www.cfa-archaeology.co.uk

Client:  
**Stirling Developments Ltd**

Drawn by: <b>MP</b>	Checked: <b>SW</b>	Date: <b>08/01/18</b>
Report No: <b>3623</b>		Fig. No: <b>15-16</b>





Fig. 17 - Trench 68, Feature 6803 (015) oblique section from the East



Fig. 18 - Trench 70, Feature 7001 (015) from the West

Project:  
Calderwood, East Calder, West Lothian. Phase 3 Areas CWa, LKf, LKh, OSc and Valley Park



**CFA ARCHAEOLOGY LTD**  
The Old Engine House  
Eskmills Park  
Musselburgh  
East Lothian, EH21 7PQ  
T: 0131 273 4380  
F: 0131 273 4381  
info@cfa-archaeology.co.uk  
www.cfa-archaeology.co.uk

Client:  
**Stirling Developments Ltd**

Drawn by: <b>MP</b>	Checked: <b>SW</b>	Date: <b>08/01/18</b>
Report No: <b>3623</b>		Fig. No: <b>17-18</b>





Fig. 19 - The Southern end of Valley Park plot



Fig. 20 - The Northern end of Valley Park plot

Project:  
Calderwood, East Calder, West Lothian. Phase 3 Areas CWa, LKf, LKh, OSc and Valley Park



**CFA ARCHAEOLOGY LTD**  
The Old Engine House  
Eskmills Park  
Musselburgh  
East Lothian, EH21 7PQ  
T: 0131 273 4380  
F: 0131 273 4381  
info@cfa-archaeology.co.uk  
www.cfa-archaeology.co.uk

Client:  
**Stirling Developments Ltd**

Drawn by: <b>MP</b>	Checked: <b>SW</b>	Date: <b>08/01/18</b>
Report No: <b>3623</b>		Fig. No: <b>19-20</b>



Fig. 21 - Trench 73, Furrows 012 from the SW



Fig. 22 - Trench 91, general view from the WSW

Project:  
Calderwood, East Calder, West Lothian. Phase 3 Areas CWa, LKf, LKh, OSc and Valley Park



**CFA ARCHAEOLOGY LTD**  
The Old Engine House  
Eskmills Park  
Musselburgh  
East Lothian, EH21 7PQ  
T: 0131 273 4380  
F: 0131 273 4381  
info@cfa-archaeology.co.uk  
www.cfa-archaeology.co.uk

Client:  
**Stirling Developments Ltd**

Drawn by: <b>MP</b>	Checked: <b>SW</b>	Date: <b>08/01/18</b>
Report No: <b>3623</b>		Fig. No: <b>21-22</b>





Fig. 23 - Trench 91, Pit 9101 West facing section

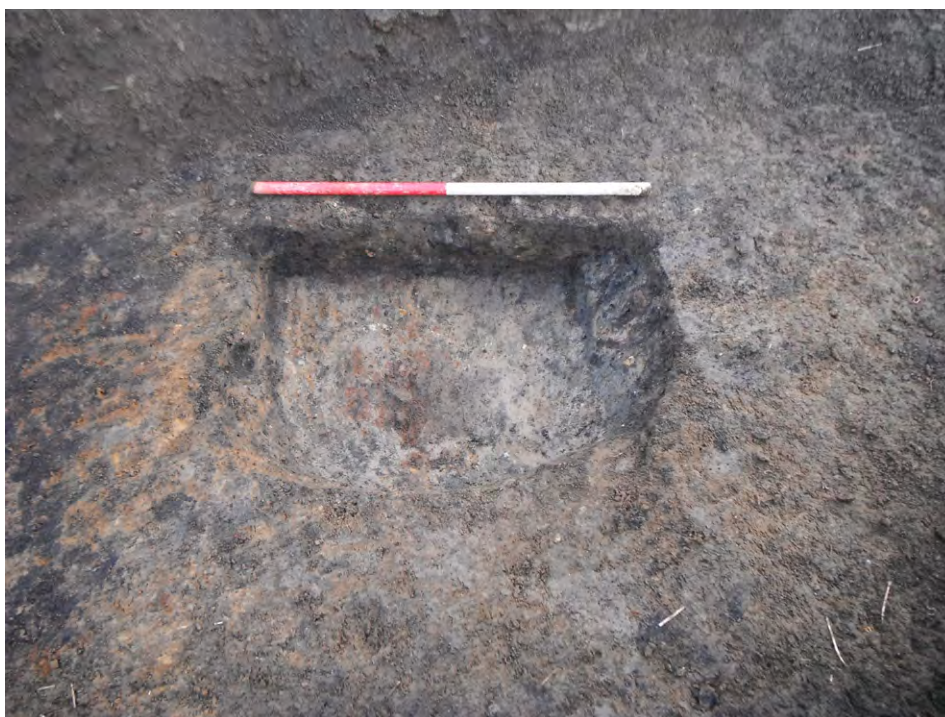


Fig. 24 - Trench 91, Pit 9101 post-ex from the SSE

Project:  
Calderwood, East Calder, West Lothian. Phase 3 Areas CWa, LKf, LKh, OSc and Valley Park



**CFA ARCHAEOLOGY LTD**  
The Old Engine House  
Eskmills Park  
Musselburgh  
East Lothian, EH21 7PQ  
T: 0131 273 4380  
F: 0131 273 4381  
info@cfa-archaeology.co.uk  
www.cfa-archaeology.co.uk

Client:  
**Stirling Developments Ltd**

Drawn by: <b>MP</b>	Checked: <b>SW</b>	Date: <b>08/01/18</b>
Report No: <b>3623</b>		Fig. No: <b>23-24</b>



**CFA** ARCHAEOLOGY  
www.cfa-archaeology.co.uk

**HEAD OFFICE - Musselburgh**

Old Engine House  
Eskmills Park, Musselburgh  
East Lothian, EH21 7PQ

t: +44 (0) 131 273 4380  
e: enquiries@cfa-archaeology.co.uk

**Leeds**

Offices C1 & C2  
Clayton Business Centre, Midland Road  
Leeds, LS10 2RJ

t: +44 (0) 113 271 6060  
e: yorkshire@cfa-archaeology.co.uk

**Manchester**

44G9, Europa Business Park  
Bird Hall Lane, Cheadle Heath  
Manchester, SK3 0XA

t: +44 (0) 161 428 8224  
e: manchester@cfa-archaeology.co.uk

**Milton Keynes**

Town Hall  
Creed Street, Wolverton  
Milton Keynes, MK12 5LY

t: +44 (0) 1908 226 124  
e: miltonkeynes@cfa-archaeology.co.uk

**Carlisle**

Warwick Mill Business Village  
Warwick Bridge, Carlisle  
Cumbria, CA4 8RR

t: +44 (0) 1228 564 531  
e: cumbria@cfa-archaeology.co.uk

**Sheffield**

Office 5, Ecclesfield Business Centre  
46 Stocks Hill, Ecclesfield  
Sheffield, S35 9YT

t: +44 (0) 114 327 1108  
e: sheffield@cfa-archaeology.co.uk

**Leicester**

Business Box  
3 Oswin Road, Brailsford Industrial Estate  
Leicester, LE3 1HR

t: +44 (0) 116 279 5156  
e: leicestershire@cfa-archaeology.co.uk

**Hertfordshire**

Amwell House  
9 Amwell Street, Hoddesdon  
Hertfordshire, EN11 8TS

t: +44 (0) 845 017 9847  
e: herts@cfa-archaeology.co.uk