



CFA ARCHAEOLOGY

Professional cultural heritage consultants - branches nationwide
enquiries@cfa-archaeology.co.uk



CAPABILITY
FLEXIBILITY
ASSURANCE

Minor Archaeological Services Call-Off Contract Caerlaverock Castle, Dumfries & Galloway (PIC182)

Car Park Extension, Trial Trenching Evaluation,
August 2018

Report No. HES-PIC182-2018-02

Authors:

Ian Suddaby MA MCIFA



CFA ARCHAEOLOGY LTD

The Old Engine House
Eskmills Business Park
Musselburgh
East Lothian
EH21 7PQ

Tel: 0131 273 4380
Fax: 0131 273 4381
email: info@cfa-archaeology.co.uk
web: www.cfa-archaeology.co.uk

Author	Ian Suddaby MA(Hons) MCIfA
Illustrator	Shelly Werner BSc Mphil PhD MCIfA
Approver	Melanie Johnson MA PhD FSA Scot MCIfA
Commissioned by	Historic Environment Scotland
Date issued	October 2018
Version	1
Grid Ref	NY 0236 6573
OASIS Reference	cfaarcha1-326209
PIC No.	PIC182
HES Report No.	HES-PIC182-2018-02
CFA Report No.	3786

This document has been prepared in accordance with CFA Archaeology Ltd standard operating procedures.

Minor Archaeological Services Call-Off Contract

**Caerlaverock Castle,
Dumfries and Galloway (PIC182)**

**Car Park Extension, Trial Trenching
Evaluation, August 2018**

Report No. HES-PIC182-2018-02

CONTENTS

1.	Introduction	5
2.	Working Methods	6
3.	Archaeological Results	8
4.	Conclusions	17
5.	References	18

Appendices

1.	Context Register	19
2.	Photograph Register	22
3.	Drawing Register	25
4.	Sample Register	25
5.	Find Register	26
6.	Discovery & Excavation Entry	27

Illustrations (bound at rear)

- Fig. 1 Location map and trench layout showing the geophysics results
- Fig. 2 General view of Caerlaverock Castle and the evaluation area to the NW from Ward Law
- Fig. 3 Trenches 1-2, 4, 7-8, trench plans
- Fig. 4 Trench 1, general view from the N
- Fig. 5 Trench 1, pit 101, NW-facing section
- Fig. 6 Trench 2, general view from the N
- Fig. 7 Trench 2, ditch 201 SW-facing section
- Fig. 8 Trench 4, linear ditch 401 from the WSW
- Fig. 9 Trench 7, pit 701 section from the WSW
- Fig. 10 Trench 7, probable post-hole 703 from the WSW

- Fig. 11 Trench 7, probable pit 706 from the NNE
- Fig. 12 Trench 8, ditch 801 section from the WSW
- Fig. 13 Trenches 9-12, trench plans
- Fig. 14 Trench 9, the edge of large feature 901 at the ENE end of the trench
- Fig. 15 Trench 9, large pit 904 section from the SW
- Fig. 16 Trench 9, pits 912, 914 from the NNE
- Fig. 17 Trench 10 general view from the ENE
- Fig. 18 Trench 10, post-hole 1003 section from the ENE
- Fig. 19 Trench 10, post-hole 1008 section from the ENE
- Fig. 20 Trench 11, linear ditch 1101 from the ENE
- Fig. 21 Trench 11, pit 1103 pre-excavation from the ENE
- Fig. 22 Trench 12, pit 1201 section from the SE
- Fig. 23 Trench 12, linear ditch 1203 section from the SW
- Fig. 24 Trenches 13-16, trench plans
- Fig. 25 Trench 13 general view from the WSW
- Fig. 26 Trench 13, pit 1301 from the NNW
- Fig. 27 Trench 13, pit 1305 section from the NNW
- Fig. 28 Trench 13, pit 1309 section from the ENE
- Fig. 29 Trench 14, general view from the N
- Fig. 30 Trench 15, general view from the WNW
- Fig. 31 Trench, 15, linear ditch 1501 section from the SW
- Fig. 32 Trench 16, possible furrow 1601 from the SW
- Fig. 33 Trenches 17-18, 21, trench plans
- Fig. 34 Trench 17, possible furrow 1705 section and the view NE
- Fig. 35 Trench 18, ditch 1801 from the WSW

- Fig. 36 Trench 20, general view from the SE
- Fig. 37 Trench 21 from the SSE
- Fig. 38 Trench 21 and a general view of the platform from the ENE
- Fig. 39 Aerial photograph of the overall site investigated in Trench 3 (Add Ref)
- Fig. 40 Trench 3 plan
- Fig. 41 Trench 3, general view of the excavated features from the SSE
- Fig. 42 Trench 3, probable palisade trench 301 from the N
- Fig. 43 Trench 3, parallel probable palisade trenches 306, 309 from the E
- Fig. 44 Trench 3, square enclosure ditch 312, 314 section from the W
- Fig. 45 Trench 3, linear ditch 321, 327 section from the SW
- Fig. 46 Trench 3, pit 318 cutting narrow slot 319/326 pre-excavation from the SE
- Fig. 47 Trench 3, pit 318 section from the N
- Fig. 48 Trench 3, post-holes 333, 335 pre-excavation with ditch 321, 327 beyond from the NW

1. INTRODUCTION

1.1 General

This report presents the results of an archaeological evaluation undertaken by CFA Archaeology Ltd (CFA) in August 2018 in advance of a proposed extension to the existing car park at Caerlaverock Castle, Dumfriesshire (NY 0236 6573; Fig. 1). The work was commissioned by Historic Environment Scotland (HES) under the Minor Archaeological Services Call-Off Contract.

A Written Scheme of Investigation (WSI) for the evaluation was produced by CFA (24 July 2018) and agreed in advance with HES and Andrew Nicholson, archaeologist for Dumfries & Galloway Council.

Caerlaverock Castle is a Property in Care (PIC182) in the Guardianship of HES. The evaluation took place outside of the scheduled area

1.2 Background

This background is taken from the HES Schedule description.

Caerlaverock Castle (Canmore & HER Refs: NY06NW 6, MDG6554) was the stronghold of the Maxwell's, wardens of the West March in the later Middle Ages. The first castle was built by them in about 1220. It is lozenge-shaped on plan and sits on a low mound surrounded by a silted-up moated ditch. It was stone built, possibly supported on oak piles. It is flanked by extensive banks and ditches of enclosures or yards to the SW and NE. The site of its harbour lies to the SW, in woods between the old castle and the present edge of the River Solway.

The old castle was abandoned about 1270, when the present castle was erected. The new castle is an archetype of a medieval stronghold, with its water filled ditch crossed by a bridge leading to a heavily defended gatehouse and into the inner court of the castle. It is approached from the NE, through a round-arched gate of stone set in the boundary of the outer court, now defined by a low bank. The castle's triangular plan is unique in Scotland, and is dominated, at the N apex, by the entrance, a double round-towered gatehouse, which provided the lordly lodging. The curtain wall which forms the triangle is provided with a round tower at each of the two remaining angles. A range of stone buildings was built against each of the curtain walls. The W range dates from the 15th century and the fine Nithsdale Lodging was built against the S and E walls in 1634.

Caerlaverock was abandoned after a siege in 1640 which badly shattered the castle and left it a ruin.

1.3 Archaeological Sensitivity and Potential Impact

The evaluation area is situated c.250m to the NW of the castle. A prior trial trenching evaluation in the field immediately adjacent to the east by Kirkdale Archaeology (Murray 2011) identified a number of linear, curvilinear and rounded negative features.

A potential buried topsoil was also identified. Aerial photographs show that some of the identified linear and curvilinear features extend into the current evaluation area.

A geophysical survey carried out within the proposed car park extension (Ovenden 2017) demonstrated the existence of negative features including a well-defined enclosure (NY06NW 9, MDG6557) and other anomalies (MDG27124) which correlate with aerial photographs and features identified by the earlier Kirkdale evaluation. A pit alignment (NY06NW23-4, MDG6546) is visible on aerial photographs but is not within the proposed development area and was not identified on the geophysics.

The archaeological potential of the site is therefore very high.

1.4 Objectives

The objectives of the programme of archaeological works were:

- To conduct an archaeological trial trenching evaluation in order to assess the archaeological sensitivity of the proposed development area in advance of a new overspill car parking area.
- To produce a report.

2. WORKING METHODS

2.1 General

Work was conducted with regard to the Chartered Institute for Archaeologists' (CIFA) Standard and Guidance as appropriate.

2.2 Evaluation Strategy

The evaluation area measures approx 1.5ha. A 10% trial trenching evaluation was undertaken (1500m²) including an additional trench requested by Andrew Nicholson to investigate the enclosure in the NE of the site outside of the new car park. A second additional trench (Trench 21) was agreed at a site meeting with HES during the evaluation to assess a potential archaeological feature identified during the fieldwork.

With the exception of Trench 21, all trenches were excavated using a mechanical excavator fitted with a 1.8m wide smooth bladed ditching bucket. Trench 21 was excavated by hand.

Turf and topsoil were removed down to either the natural substrate or the top of the first significant archaeological horizon encountered. All further excavation work to achieve the objectives of the evaluation was undertaken by hand.

All excavation and on-site recording was carried out according to standard CFA procedures, principally by drawing, by photography and by completing standard CFA record forms.

The stratification of all excavated areas was recorded whether or not significant archaeological deposits were identified.

A digital photographic record was maintained throughout the fieldwork, including pre-excavation photographs, images to record individual features at different stages of excavation, photographs of cleaned sections, post-excavation photographs of features and general working images.

The locations of the sections and features were recorded using industry standard DGPS equipment. The survey data and any hand-drawn plans were accurately tied in to the Ordnance Survey National Grid.

All artefacts and faunal remains were retained. Artefacts recovered from secure contexts were individually bagged and their locations recorded by context or in three dimensions, as appropriate. Artefacts from topsoil were bagged by excavation area.

Environmental sampling was targeted upon potentially significant archaeological deposits or features. Bulk samples of dry deposits were normally of 10 litres.

Trenches were backfilled on completion of recording. Spoil was replaced in the trenches and compacted with the machine. Turf cover was only reinstated in Trench 21.

3. ARCHAEOLOGICAL RESULTS

3.1 General

In the text below, Trenches 1-2 and 4-21 are described first as they lie within the area of the proposed car park development. Trench 3 is described at the end as it lay outside the area of the proposed development.

The trenches lay within a large pasture field, undulating but generally south or south-west facing (Fig. 2). A shallow valley runs south-west from the northern end of Trench 1 to the western end of Trench 18. The southern edge of the field, between Trenches 9-10 and 18 is steeper and may be a relict shoreline. The Solway Firth is now around 500m to the south.

The field is not frequently ploughed but 0.3m of ploughsoil (**001**) was recorded, with plough scores in the natural subsoil on the more elevated ground in Trenches 1-3. Modern and post-medieval finds were recovered from the topsoil. A yellow-brown or orange-brown subsoil (**002**) was present in the central part of the site, from Trench 16 in the west to Trenches 7 and 19 in the east. Flint was recovered from the subsoil, which was absent in Trenches 9 and 10. The natural subsoil (**003**) was in general a fairly loose sandy gravel, with very few larger stones.

Numbers in bold below refer to contexts, a full list of which are in Appendix 2. The finds are described in Section 3.2 below and are quantified in Appendix 5.

3.2 Trenches Within the Development

Trench 1

Trench 1 (Figs. 1, 3-5) was aligned roughly N-S and measured 50m by 1.8m. It ran along the proposed access road from the B725. The northern end lay within a shallow valley (Fig. 4) and the southern end was on a low ridge. The soils were 0.8m deep at the northern end of the trench and 0.3m deep at the southern end.

A single circular pit (**101**) was recorded. This feature (Figs. 3, 5) measured 0.5m in width and had a depth of 0.1m. The single fill consisted of a grey-black sandy silt with charcoal flecks. No finds were recovered.

Trench 2

Trench 2 (Figs. 1, 3, 6-7) was aligned roughly N-S and measured 50m by 1.8m. It ran along the proposed access road from the B725 and into the parking area. The trench was located on a gentle south facing slope. The soils were 0.3m deep at the northern end of the trench and 0.45m deep at the southern end.

A single linear ditch (**201**) was recorded, aligned NE-SW. This feature (Fig. 6) measured 1.8m in width and had a depth of 0.5m. Two fills were present, a yellow-brown silty sand and gravel (**202**) over a grey-brown silty sand and gravel (**203**). No finds were recovered.

Trench 4

Trench 4 (Figs. 1, 3, 8) was aligned roughly ENE-WSW and measured 50m by 1.8m. It was located on almost level ground. The soils were 0.4m deep throughout the trench.

A single linear ditch (**401**) was recorded, aligned NE-SW. This feature (Fig. 8) measured 0.4m in width. The surface fill (**402**) consisted of a light yellow-brown sandy silt with occasional small gravel. It was not excavated.

Trenches 5-6

These trenches contained no archaeological remains. A number of potential features were identified and investigated, none were authentic. The soils in both were between 0.4m and 0.5m in depth. One piece of flint was recovered from the subsoil (**002**) in Trench 6.

Trench 7

Trench 7 (Figs. 1, 3, 9-11) was aligned roughly ENE-WSW and measured 50m by 1.8m. It was located on almost level ground. The soils were between 0.4m and 0.5m deep throughout the trench. Three features were recorded.

Pit **701** (Figs. 3, 9) was circular, with a width of 1.55m and a depth of 0.3m. It contained two fills, a greyish-yellow-brown sandy silt and broken stones (**702**) over broken stones with a matrix of greyish-brown ashy silty sand (**709**). No finds were recovered.

Feature **703** (Figs. 3, 10) appeared to be a post-hole as probable packing stones (**705**) were present in the yellow-brown sandy silt fill (**704**). It measured 0.55m by 0.45m and was aligned ENE-WSW. It was not excavated.

Feature **706** (Figs. 3, 11) was partially exposed at the side of the trench. It measured 1m ENE-WSW by 0.5m and it was sealed by the subsoil (**002**). An outer fill (**707**) consisted of an orange-brown silty sand and gravel, surrounding a small central fill (**708**) of grey-black silty sand with charcoal flecks. It was not excavated.

Trench 8

Trench 8 (Figs. 1, 3) was aligned roughly ENE-WSW and measured 50m by 1.8m. It was located on almost level ground. The soils were 0.3m deep throughout the trench.

A single linear ditch (**801**) was recorded, aligned NE-SW. This feature (Fig. 12) measured 1.2m in width and a section showed it to be 0.1m deep. The fill (**802**) consisted of a light yellow-brown sandy silt with occasional small gravel. One sherd of green glazed post-medieval pottery was recovered from **802**. This feature was not present in either Trench 7 or Trench 9.

Trench 9

Trench 9 (Figs. 1, 13) was aligned roughly ENE-WSW and measured 50m by 1.8m. It

was located on fairly level ground in the SE corner of the field. Over most of the trench, topsoil with a depth of 0.3m overlay natural sand and fine gravel.

At the ENE end of the trench, the edge of a large feature (**901**, Fig. 14) was revealed. This feature coincided with a slight hollow in the field which measured around 15m by 11m. A slot showed that the sides dipped rapidly before levelling off at a depth of 0.6m. It was filled with an orange or grey-yellow silty sand with gravel (**902**). To the west of this however, the fill was predominantly of stones (**903**). No finds were recovered.

Just west of feature **901**, a gently curving ditch (**906**) was recorded. This feature was aligned NE-SW and was 0.4m wide. The fill was a mid orange-brown gritty silty sand (**907**). It was not excavated.

Feature **904** (Fig. 15) appeared to be a large circular pit with a possible width of up to 6m. The upper portion sloped very gently downwards into an almost vertical-sided central pit with a width of 3.1m ENE-WSW, and which extended beyond the trench edges. The depth was around 1.15m. The primary fill (**905**) consisted of re-deposited sand and fine gravel with charcoal chunks and the overlying fill (**909**) was similar. Above this was a layer of grey-orange ashy silty sand with charcoal and burnt bone (**910**) and the upper fill was orange-brown silty sand (**911**). Medieval White Gritty Ware Pottery and a piece of pecked sandstone were recovered from context **905** and post-medieval pottery from **909**. What may be a segment of a sandstone column with a suggested medieval date was found in **910**. Most of a Rowel spur dating to the 14C or later and a piece of worked jet were found in **911**.

Two pits (Fig. 16) were recorded near the WSW end of the trench. Pit **912** was circular with a width of around 1m and a fill (**913**) of dark orange-brown silty sand with pebbles. This appeared to cut an oval or egg-shaped pit (**914**) with a width of 0.6m and a length of 0.7m. The fill (**915**) was a mid orange-brown silty sand with a few pebbles. They were not excavated.

Trench 10

This trench (Figs. 1, 13) was located on fairly level ground. To the south, the field sloped down to the woodland (Fig. 17). Near the base of this slope, a possible platform was identified during the fieldwork and Trench 21 was located on its edge. In Trench 10, topsoil with a depth of 0.3m overlay natural sand and fine gravel. An alignment of five post-holes on an ENE-WSW alignment was recorded in the trench and these were parallel with the platform to the south.

All of the post-holes (**1001**, **1003**, **1006**, **1008**, **1010**) were around 0.5m in width. Two were sectioned and depths ranged between 0.4m and 0.5m. The gravelly packing material (eg **1004**, **1009**) contained charcoal. Post-pipes were seen in plan within **1006** and in section within **1003**, Fig. 18. An iron object, probably a nail was found in fill **1009** within feature **1008** (Fig. 19).

Trench 11

This trench (Figs. 1, 13) measured 50m x 1.8m and was located on fairly level ground. Topsoil with a depth of 0.3m overlay natural sand and fine loose gravels. Five features were recorded.

Feature **1101** (Fig. 20) was a linear ditch, aligned NE-SW and 0.8m wide. It was filled with a light brownish-grey orange brown silty sand and gravel (**1102**). It was not excavated.

Feature **1103** (Fig. 21) was a small pit measuring 0.3m by 0.2m and aligned NE-SW. Burnt bone was visible on the surface of the fill (**1104**). The dry fill was too loose to create a section and the feature was fully excavated. The depth was 0.25m. No finds were recovered.

Feature **1105** was a small circular pit measuring 0.4m in diameter. It was filled with a yellowish-mid orange brown sandy silt and gravel (**1106**). It was not excavated.

Feature **1107** was a linear ditch, aligned NE-SW and 0.8m wide. It was filled with a light brownish-grey orange brown silty sand and gravel (**1108**). It was not excavated.

Feature **1109** was a linear ditch, aligned NE-SW and 1m wide. It was filled with a light brownish-grey orange brown silty sand and gravel (**1110**). It was not excavated.

Trench 12

This trench (Figs. 1, 13) measured 50m x 1.8m and was located on fairly level ground. Topsoil with a depth of 0.3m overlay subsoil with a depth of 0.1m and the natural subsoil was a mixed sand and gravel. Three features were recorded.

Feature **1201** (Fig. 22) was a circular pit measuring 1.4m in diameter and was 0.3m deep. It was filled with a yellowish-mid orange brown sandy silt and gravel (**1106**). No finds were recovered.

Feature **1203** (Fig. 23) was a linear ditch, aligned NE-SW and 0.35m wide and 0.15m deep. It was filled with a light brownish-grey and orange brown silty sand with gravel (**1204**). No finds were recovered.

Feature **1205** was a small circular pit measuring 0.6m in diameter. It was filled with a yellowish-mid orange brown sandy silt and gravel (**1206**). It was not excavated.

Trench 13

This trench (Figs. 1, 24-25) measured 50m x 1.8m and was located on a slight South or SSW facing slope. Topsoil with a depth of 0.3m overlay between 0.1m and 0.2m of subsoil which overlay natural sand and fine loose gravels. Five features were recorded.

Feature **1301** (Fig. 26) was a circular pit measuring 0.9m in diameter. It was filled with a dry orange-brown silty sand with gravel and charcoal flecks (**1302**). It was not excavated.

Feature **1303** was an egg-shaped pit measuring 0.7m by 0.45m and aligned NE-SW. The fill was a dry orange-brown silty sand with gravel and charcoal flecks (**1302**). It was not excavated.

Feature **1305** was only partially exposed within the trench but it may well be a pit. The exposed portion was 1.3m by 0.7m. The upper fill was a dry orange-brown silty sand with gravel and charcoal flecks (**1306**) and this overlay a primary fill of dark orange-brown silty sand with shattered small cobbles and frequent fragments of charcoal (**1311**, Fig. 27). The depth was 0.35m. No finds were recovered.

Feature **1307** may be the terminal of a linear ditch, aligned NW-SE and 0.8m wide and protruding 1.1m into the trench. It was filled with orange-brown silty sand and charcoal flecks (**1308**). No finds were recovered.

Feature **1309** was an egg-shaped pit measuring 0.9m by 0.65m and aligned N-S. The fill was a dry orange-brown silty sand with charcoal flecks (**1310**). The depth was 0.15m. No finds were recovered.

Trench 14

This trench (Figs. 1, 24, 29) measured 50m x 1.8m and was located on a slight south-facing slope. Topsoil with a depth of 0.3m overlay natural sand and fine loose gravels. Two features were recorded.

Linear ditch **1401** was 1.8m wide and contained a fill (**1402**) of mid yellow-brown silty sand and gravel. It was not excavated in this trench.

Feature **1403** was L-shaped within the trench with irregular edges and a general width of 0.3m. It was filled with a mid brown sandy silt and occasional small gravel (**1404**). In section, the feature was more convincing than in plan, with steep sides and a concave base. The depth was 0.25m. No finds were recovered.

Trench 15

This trench (Figs. 1, 24, 30) measured 50m x 1.8m and was located on a slight south-facing slope. Over most of the trench, topsoil with a depth of 0.3m overlay natural sand and fine loose gravels but at the NW end, a subsoil with a depth of 0.15m was present. One feature was recorded.

Linear ditch **1501** (Fig. 31) was 1.5m wide, 0.6m deep and contained three fills. The primary fill (**1502**) was an orange-grey silty sand with pebbles. This underlay **1503**, a light brown silty sand and pebbles. The upper fill (**1504**) was a dry dark brown or grey-black silty sand with charcoal and larger cobbles. No finds were recovered and the upper was not replicated in any of the other excavated sections in this ditch.

Trench 16

This trench (Figs. 1, 24) measured 50m x 1.8m and was located in the west side of the field. The WSW end ran through what may be an outwash fan from the shallow valley

to the NE. At the WSW end, topsoil overlay natural sandy gravels but at the NE end, topsoil overlay a deep deposit of gravel with a grey silty matrix (**004**). Two parallel features and a clay piped field drain were recorded.

Features **1601** and **1603** were located near the WSW end of the trench and were 2.2m and 1.4m wide. Feature **1601** is shown in Fig. 32. Both were filled with a grey-yellow-brown silty sand and occasional gravel (**1602, 1604**). Neither were excavated in this trench. These are likely to be cultivation furrows.

The clay-piped drain (**1605**) contained an extruded D profile pipe (**1606**).

Trench 17

This trench (Figs. 1, 33) measured 50m x 1.8m and was located in the west side of the field. The WSW end ran through what may be an outwash fan from the shallow valley to the NE. At the WSW end, topsoil overlay 0.2m of subsoil with natural sandy gravels below but at the NE end, topsoil overlay a deep deposit of gravel with a grey silty matrix (**004**). Three linear features, two of which were parallel and a continuation of the cultivation furrows in Trench 16 and a clay piped field drain were recorded.

Feature **1701** was poorly defined but appeared to be a continuation of the linear ditch seen in Trenches 2, 3, 14 and 15. It was 1.5m wide in this trench and was filled (**1702**) with a grey-yellow-brown silty sand with occasional gravel. It was not excavated in this trench.

The clay-piped drain (**1703**) contained an extruded D profile pipe (**1704**).

Features **1705** and **1707** were located at the WSW end of the trench and were 3.3m and 1.6m wide. Feature **1705** is shown in Fig. 34. Both were filled with a grey-yellow-brown silty sand and occasional gravel (**1706, 1708**). Feature **1705** was sectioned, resulting in the recovery of three sherds of post-medieval glazed ceramic with a red fabric. The feature was 0.25m deep.

Trench 18

This trench (Figs. 1, 33) measured 50m x 1.8m and was located in the west side of the field. The WSW end ran through what may be an outwash fan from the shallow valley to the NE. At the WSW end, topsoil overlay 0.3m of subsoil with natural sandy gravels below and at the NE end, topsoil overlay 0.2m of subsoil with sandy natural below. One linear feature was recorded.

Feature **1801** was poorly defined but appeared to be a continuation of the linear ditch seen in Trenches 2, 3, 14, 15 and 17. It was 2.1m wide in this trench and was filled (**1802**) with a grey-yellow-brown silty sand with occasional gravel. It was not excavated in this trench.

Trenches 19-20

These trenches were excavated in the NE corner of the site. Trench 19 was 15m x 1.8m and Trench 20 was 31m x 1.8m. In Trench 19, topsoil overlay 0.3m of subsoil with

natural sandy gravels below. In Trench 20 (Fig. 36), topsoil overlay natural sands and cobbles. No archaeological features were present in either trench.

Trench 21

This trench (Figs. 1, 33, 37-38) was located on the southern edge of the platform which lies on the slope of a potential relict beach to the South of Trench 10. The platform resembles a vehicular passing place in plan and is around 24m in length (E-W) and 8m in width. The trench measured 1.6m x 1.6m and it was excavated by hand.

Topsoil with a depth of 0.1m was removed and this exposed an intermittent kerb of greywacke boulders (**2101**). These retained a deposit of coarse sand and cobbles (**2102**) which formed the structure of the platform. Some of this material had slumped downslope (**2103**), perhaps when stones had been removed from the kerb. No finds were recovered and natural subsoil was not exposed.

3.3 Addition Trench Outside of the Development

Trench 3

This trench (Figs. 1, 39-41) was located outside the proposed car park area and with the exception of the linear ditch also seen in Trenches 2, 14-15 and 17-18, none of the features will be affected by the development.

The trench measured 50m x 1.8m and aligned NW-SE. Once excavated, it was realised that a key intersection between ditch features had been missed and, after agreement, an extension of 7m x 2m was excavated in the centre of the SW side to reveal it. Within most of the trench, topsoil (**001**) with a depth of 0.3m overlay a sandy gravel natural subsoil but at the south-east end, a subsoil (**002**) was present and a lithic was recovered from it.

The trench revealed that the sub-square ditched enclosure with bulbous (or convex) eastern and NW sides cut an earlier sub-square enclosure which was defined by a narrow stone-filled ditch which probably supported a wooden palisade fence. The long 'tail' to the SW, seemingly associated with the later enclosure, was also recorded. Several pits and post-holes within the trench were also assessed.

The eastern side of the earlier enclosure (**301/330**, Fig. 42) consisted of a ditch 0.35m wide and 0.2m dep. It was filled with medium and large cobbles (**303**) and a charcoal flecked grey-brown silty sand with pebbles (**302**). No finds were recovered.

The northern side of the earlier enclosure consisted of two parallel ditches (**306**, **309**, Fig. 43), 0.4m apart. In plan, both ditches had bulges in their sides, suggestive of post-settings. Ditch **306** varied between 0.4m and 0.6m in width and was 0.3m deep. The stones (**308**) had a similar matrix (**307**) around them to that present in ditch **301**. Ditch **309** varied between 0.5m and 0.75m in width and was 0.3m deep. The stones (**311**) had a similar matrix (**310**) around them to that present in ditch **301**. No finds were recovered.

Palisade ditch **301/330** was cut by a substantial ditch **312/314** which had a width of around 2.5m and a depth of around 1.2m. The section is shown in Fig. 44. A primary ditch (**312**) with a fill of orange-grey gravel and silty sand was later given a wide, shallow re-cut (**314**) and this was filled with **315-7**. Deposits **315** and **316** were soil-like deposits consisting of yellow-brown silty sand with gravel and charcoal flecks whereas **317** was re-deposited natural subsoil. Burnt bone was recovered from deposit **317**.

The NE-SW aligned ditch seen in Trenches 2, 14-15 and 16-17 was 1.5m wide in Trench 3 and a section (Fig. 45) showed it to be 0.65m deep. The primary cut (**321**) was filled with bands of grey-brown and orange-brown silty sand & gravel (**322, 329**). The re-cut (**327**) was filled (**328**) with orange-brown and brownish-grey sandy gravel and cobbles, with some quite large stones in the section. A small piece of fired clay with what appeared to be a vitreous residue adhering to it was found in layer **329**.

A number of discrete features were recorded in the trench.

Pit **304** was circular, with a width of 0.75m and a depth of 0.2m. It was filled with a yellow-brown and dark brown silty sand with charcoal flecks and a couple of large stones (**305**). No finds were recovered.

Pit **318** appeared to cut a curving gully or groove (**319, 326**, Fig. 46). The pit was circular, 1m in diameter and it was 0.4m deep. The fills (Fig. 47), consisted of a primary reddish-brown silty gravel (**323**) under a blackish-grey sandy silt with charcoal and fractured stone inclusions (**320**). No finds were recovered.

Two post-holes (**333, 335**, Fig. 48) were located just to the NW of ditch **321/327**. Feature **333** was circular, 0.3m in width and steep-sided. The depth was 0.25m and it was filled with an orange-brown silty sand and gravel (**334**). Feature **335** was also circular, 0.4m in width and steep-sided. Several packing stones (**336**) were present as was a matrix of gritty grey-brown silty sand with grit and disturbed packing stones (**337**). No finds were recovered from either feature.

Feature **338** may be a post-hole with a width of 0.35m. It was not excavated.

3.4 Finds

General Finds by Christina Hills

Find type	Number	Weight (g)
Burnt bone	1	1
Fired clay	1	6
Flint	2	6
Glass	1	8
Iron	3	109
Jet?	1	3
Pottery	7	87

Table 1. Summary of finds by type

Above is a summary table of all finds retained during the evaluation, apart from the stones and masonry which is discussed below.

Three iron objects were recovered on site, including a probable nail fragment from topsoil **001** and a nail from fill of pit **1008**. The other iron object was a Rowel spur of post 14th century date from the upper fill of pit **904**, the rowel is missing and the spur is broken and corroded.

Seven sherds of pottery were found during the excavation, one of which is Scottish White Gritty Ware, from approximately 12th-14th century, and found in the primary fill of pit **904**. The rest of the pottery is post medieval reduced and oxidised wares, some of which are glazed: from topsoil **001**, fill of ditch **801**, mid fill of pit **904** and the fill of possible furrow **1705**.

One piece of possible jet was found in the upper fill of pit **904**, it is slightly curved and is probably part of a larger unknown object.

Two possible lithics are from subsoil in Trenches 3 and 6.

One piece of undiagnostic burnt bone was found in ditch **314**.

A piece of fired clay was found in ditch **321**, this object is possible kiln lining.

One piece of modern green bottle glass was recovered from the topsoil **001**.

Masonry by Mike Cressey

Three pieces of stone suspected as being architectural fragments were examined from contexts **905**, **909** and **910**.

The stone from **905** was an angular piece (100 x 100 x 500mm) of sandstone with peck marks possibly in the form of stugging on one side.

The stone from **909** was a rectangular piece of sandstone with a gradual taper at one end (700 x 700 x 200mm) terminating in an oblique facet. This appears to be a result of fracturing rather than deliberate working.

The stone from **910** is a circular piece of moulded stone with a diameter of 290mm. It is 355mm at its widest point. Outside the circle are four flutes measuring c.50mm wide and 50mm thick. A circle measuring 200mm in diameter has been inscribed at the centre with a masons compass and then dissected with a scribe to mark the centre of the flutes. This piece appears to be a segment of stone that formed part of a column. No channels for glazing bars are present thus ruling out use as a window mullion. Lime mortar staining confirms that it has been part of a structure rather than a discarded blank. Dating the stone is difficult but an early mediaeval date is assumed

4. CONCLUSIONS

Twenty-one evaluation trenches were excavated which covered c. 10% of the proposed development site. Trench 3 did not lie within the proposed development site.

The evaluation revealed that archaeological remains are widespread across the site. Few artefacts were found in primary contexts but the evidence suggests that the identified features date broadly to the prehistoric, medieval and later medieval periods.

The trenches were set out to assess the potential features identified in the geophysical survey and provide good coverage of the site.

It was apparent during the excavation of Trench 3 that an error of between 1m and 2m was present in the location of the geophysical anomalies, at least in that part of the field. In other trenches however, there was a very good correspondence between the geophysical anomalies and the archaeological results. In addition, a number of features were identified during the evaluation, most notably in Trenches 3, 10 and 13, which were not identified from the geophysics.

The positive trends noted in the geophysics were not consistent when compared to the archaeological results. In some trenches, for example Trenches 8, 11-12, they coincided with narrow and shallow linear ditches, akin to Rig & Furrow. In others, for example Trenches 17-18, they coincided with a much wider and deeper ditch under deep overburden. In several trenches, most notably in Trench 3, they did not coincide with any archaeological feature.

During the CAT scanning of the trenches, it was noticed that erroneous signals were very frequent when on radio function. This is symptomatic of magnetised or heated material in the soil and it is reflected in the number of Ferrous and Magnetic Disturbance geophysical anomalies on Fig. 1. Very high readings were achieved when the scanner was passed over some of the pits once overburden had been removed and this has implications for geophysical interpretation. However, the vast majority of the yellow Ferrous and Magnetic Disturbance anomalies did not coincide with archaeological features, indicating that the natural geology may be ferrous or magnetic.

Leaving aside the remains in Trench 3, the linear feature running to the SW through Trenches 2, 14-15 and 17-18 was artefact poor but it was noted that this feature appears to align with a watercourse within the woods to the SW, the end of which is shown on Figs. 2-4 in the Geophysical Survey Report (Ovenden 2017).

The pits varied in width and depth. Some may be prehistoric, with others being medieval or later. In Trench 9, pits **901** and **904** may be quarry pits. In Trenches 3 and 10, some pit features were certainly post-holes and elements of larger structures.

Four distinct types of ditches were identified. In Trenches 2-3, 14-15 and 17-18, there was a substantial linear ditch with a width of around 2m and a depth of around 0.5m, noted on the aerial photographs and geophysical survey. Were it not for the clear association with the square enclosure investigated in Trench 3, this could be a relatively modern land boundary ditch. The second type was seen in Trenches 4, 8 and 11-12. Roughly parallel and perhaps 10m apart, these were typically around 1m wide

and under 0.2m deep. They may well be the remains of Rig & Furrow cultivation. A third type was seen in Trenches 16-17. These were also roughly parallel but the alignment was different and they were wider and deeper than the above ditches. Pottery within them is suggestive of a late medieval date. The fourth type was only identified in Trench 3. These were narrow, stone-filled and are interpreted as palisade trenches, holding a stout wooden fence.

At the base of the potential relict beach along the southern edge of the field, a rectangular feature was identified during the evaluation. Trench 21 showed this was defined by a crudely formed boulder revetment which retained a sloping platform of sandy gravel. This feature was undated.

In Trench 3, the square enclosure ditch seen on both the aerial photographs and the geophysics was seen to cut an earlier palisade ditch. The latter was clearly visible on the aerial photographs but absent from the geophysics. Several pits and post-holes were recorded in the vicinity of these features. No closely dateable artefacts were recovered but this feature is likely to be later prehistoric.

The project archive, comprising all CFA record sheets, maps and reports will be deposited with the NHRE and copies of reports will be lodged with the SMR.

A summary statement of the results of this evaluation will be submitted for publication in *Discovery and Excavation in Scotland* and an online OASIS entry submitted on completion of the project.

5. REFERENCES

Murray, D. 2011 *Caerlaverock Castle: Excavation*. Kirkdale Archaeology Unpublished Report

Ovenden, S. 2017 *Geophysical Survey Report; Caerlaverock Castle, Car Park Area*. Rose Geophysical Consultants on behalf of CFA Archaeology Ltd Unpublished Report

APPENDIX 1: Context Register

Context	Fill of	Type	Description
001		Layer	Topsoil
002		Layer	Subsoil. Dry mid-orange-brown silty sand and occasional small stones
003		Layer	Natural subsoil. In general this was a yellow or orange sandy small gravel or gravelly sand
004		Layer	Cobbles and gravel with a grey powdery dry matrix
101		Cut	Cut for shallow pit.
102	101	Fill	Dark grey-black silty sand + charcoal.
201		Cut	Cut for linear feature.
202	201	Fill	Mid yellow brown silty sand + gravel.
203	201	Fill	(Dry) grey-brown silty sand + frequent gravel. Primary fill.
301		Cut	Cut for palisade ditch/linear feature.
302	301	Fill	Greyish dark brown friable to med. Soft sandy silt with charcoal, pebbles and organic inclusions.
303	301	Fill	Setting (?) stones filling [301].
304		Cut	Cut for pit.
305	304	Fill	Fill of pit.
306		Cut	Cut for palisade trench (N).
307	306	Fill	Fill of palisade trench.
308	306	Fill	Stones.
309		Cut	Cut for palisade trench (S).
310	309	Fill	Fill of palisade trench.
311	309	Fill	Stones.
312		Cut	Cut for ditch.
313	312	Fill	Brown-grey gravelly silt with moderate compaction with unknown inclusions.
314		Cut	Cut for ditch – re-cut, cuts [312].
315	314	Fill	Yellowish-brown sandy silt of moderate compaction and coarse stone inclusions.
316	314	Fill	Yellow- brown friable silty gravel.
317	314	Fill	Reddish- yellow firm re-deposited natural deposit.
318		Cut	Cut for circular pit at NW end of trench. Cuts groove [319].
319		Cut	Cut for narrow groove, cuts [318].
320	318	Fill	Blackish- grey sandy silt deposit with stone inclusions. Upper fill of [318].
321		Cut	Cut for ditch (as in Tr2, 14-15 etc).
322	321	Fill	Primary fill. Grey-brown and orange-brown banded silty sand & gravel.
323	318	Fill	Primary fill - Reddish-brown silty gravel.
324	319	Fill	Brownish-grey loose gravel fill of gully.
325	326	Fill	Greyish-brown firm gravel fill of gully.
326		Cut	Linear cut for gully.
327		Cut	Re-cut within ditch [321].
328	327	Fill	Orange-brown/brownish- grey sandy gravel & cobbles fill of re-cut [327].
329	321	Fill	Dark brown clay/silty sand + less gravel and more charcoal than seen in (328).
330		Cut	Cut for palisade continuation = [301].
331	330	Fill	Greyish brown silty gravel.
332	330	Fill	Stone fill.
333		Cut	Cut for posthole (S) to NW of ditch [321]/[327].
334	333	Fill	Brownish-grey/orangey brown silty sand+ small grit/gravel.
335		Cut	Cut for posthole (N) to NW of ditch [321]/[327].
336	335	Fill	Packing stones - in situ.
337	335	Fill	Grey-brown silty sand + grit, disturbed stones.
338		Cut	Cut for posthole.

Context	Fill of	Type	Description
339	338	Fill	Dark orange-brown silty sand, grit & gravel.
401		Cut	Cut for linear NE-SW ditch.
402	401	Fill	Dry light yellow-brown sandy silt + gravel.
701		Cut	Cut for circular pit.
702	701	Fill	Greyish-yellow-brown sandy silt + stones.
703		Cut	Cut for probable posthole.
704	703	Fill	Light yellow-brown silty sand + occasional gravel.
705	703	Fill	Packing stones.
706		Cut	Cut for feature in trench edge.
707	706	Fill	Mid orange-brown silty sand + gravel.
708	706	Fill	Central (?) fill: grey-black silty sand+ charcoal flecks. Post pipe?
709	701	Fill	Greyish-brown ashy silty sand.
801		Cut	Cut for linear ditch.
802	801	Fill	Light yellow-brown silty sand and gravel
901		Cut	Cut for large probable pit at ENE end, part of a circular dip in the field.
902	901	Fill	Light orange/mottled greyish-yellow gritty silty sand with gravel & cobble inclusions.
903	901	Fill	Stones.
904		Cut	Cut for oval pit in centre of trench.
905	904	Fill	Primary fill of [904]: light to med brown fine silty sand fill with pebbles and charcoal inclusions.
906		Cut	Cut for narrow ditch.
907	906	Fill	Mid orange-brown gritty silty sand.
908	901	Fill	Slumped or collapsed side of natural and yellowish-red gravel fill of [901].
909	904	Fill	Mid fill of [904]: med brown friable sand with pebble and charcoal flecks inclusions.
910	904	Fill	Grey-orange silty sand with pebbles, burnt bone & charcoal under [904].
911	904	Fill	Top fill of [904]: dark grey-brown fine silty sand with charcoal flecks and stone inclusions.
912		Cut	Cut for circular pit , cuts [914].
913	912	Fill	Dark orange-brown silty sand + pebbles.
914		Cut	Cut for pit, cut by [912].
915	914	Fill	Mid orange-brown silty sand + small pebbles.
1001		Cut	Cut for circular feature, probable post-hole.
1002	1001	Fill	Orange-brown silty sand + small gravel.
1003		Cut	Cut for circular posthole.
1004	1003	Fill	Packing material. Orange-brown re-deposited sandy gravel.
1005	1003	Fill	Post-pipe. Dark orange-brown silty sand + charcoal flecks. 1/2 excavated.
1006		Cut	Cut for circular feature.
1007	1006	Fill	Packing material. Orange-brown re-deposited sandy gravel. (As (1004)).
1008		Cut	Cut for circular pit.
1009	1008	Fill	Mid yellowish grey sandy silt (as (1004)). Not a clear post-pipe in this feature.
1010		Cut	Cut for circular feature.
1011	1010	Fill	Packing material. Orange-brown re-deposited sandy gravel. (As (1004)).
1012	1006	Fill	Post-pipe. Dark orange-brown silty sand + charcoal flecks
1101		Cut	Cut for linear feature.
1102	1101	Fill	Light orange brown silty sand +gravel (As (1204)).
1103		Cut	Cut for small circular pit.
1104	1103	Fill	Dark brown-black/dry orange-brown fine silty sand + grit and small gravel. Charcoal flecks and burnt bone.
1105		Cut	Possible small circular pit.

Context	Fill of	Type	Description
1106	1105	Fill	Mid orange-brown sandy silt + gravel (As (1202)).
1107		Cut	Cut for linear feature.
1108	1107	Fill	Light orange brown silty sand + gravel (As (1204)).
1109		Cut	Cut for linear feature.
1110	1109	Fill	Mid orange-brown sandy silt + gravel (As (1202)).
1201		Cut	Cut for circular pit.
1202	101	Fill	Yellowish-mid orange brown sandy silt & gravel.
1203		Cut	Cut for linear feature.
1204	1203	Fill	Light brownish-grey orange brown silty sand + gravel.
1205		Cut	Cut for sub-circular pit.
1206	1205	Fill	Mid orange-brown sandy silt + gravel (As (1202)).
1301		Cut	Cut for circular feature.
1302	1301	Fill	Dry orange-brown silty sand + charcoal flecks. Gravel.
1303		Cut	Cut for egg-pit.
1304	1303	Fill	Dry orange-brown silty sand + charcoal flecks. Gravel. (As (1302)).
1305		Cut	Cut for possible circular pit.
1306	1305	Fill	Dry orange-brown silty sand, little gravel, charcoal flecks.
1307		Cut	Cut for possible ditch terminal.
1308	1307	Fill	Dry orange-brown silty sand + charcoal flecks. (As (1302)).
1309		Cut	Cut for sub-circular/egg shaped pit.
1310	1309	Fill	Dry orange-brown silty sand + charcoal flecks. (As (1302)).
1311	1305	Fill	Primary fill of [1305]: dark orange-brown silty sand with cracked small cobbles, charcoal.
1401		Cut	Cut for linear feature.
1402	1401	Fill	Mid yellow-brown silty sand + gravel.
1403		Cut	Possible ditch.
1404	1403	Fill	Mid brown sandy silt + occasional small gravel.
1501		Cut	Cut for linear ditch.
1502	1501	Fill	Primary fill of [1501]: orange-grey fine silty sand with small pebbles.
1503	1501	Fill	Mid fill of [1501]: light brown fine silty sand with stones and pebbles.
1504	1501	Fill	Upper fill of [1501]: dark-brown black fine silty sand with charcoal and stones.
1601		Cut	Cut for furrow.
1602	1601	Fill	Grey-yellow-brown silty sand + occasional gravel.
1603		Cut	Cut for furrow.
1604	1603	Fill	Grey-yellow-brown silty sand + occasional gravel.
1605		Cut	Cut for CPFD.
1606	1605	Fill	Clay pipe + backfill.
1701		Cut	Cut for linear feature.
1702	1701	Fill	Grey-yellow-brown silty sand + occasional gravel.
1703		Cut	Cut for clay pipe drain.
1704	1703	Fill	1 piece of clay pipe + soil.
1705		Cut	Cut for possible furrow.
1706	1705	Fill	Brownish grey silty sand + gravel.
1707		Cut	Cut for possible furrow.
1708	1707	Fill	Brownish grey silty sand + gravel.
1801		Cut	Cut for linear feature.
1802	1801	Fill	Grey-brown silty sand+ gravel.
2101		Fill	Boulders edging platform.
2102		Fill	Orange brown sandy gravel platform material.
2103		Fill	Orange brown silty sand + grit re-deposited platform material.

APPENDIX 2: Photographic Register

Shot No.	Summary description of subject	Facing
1-7	Pre-ex views	various
8	Tr1 plough scores	SSE
9	Tr1 pit [101] pre-ex	ENE
10-11	Tr1 gen view	SSE
12	Tr1 soil profile NNW end	WSW
13	Tr2 gen view	SSE
14-15	Tr2 ditch 201 pre-ex	SSE, SE
16	Tr1 pit [101] NW facing section	SE
17	Tr2 ditch [201] WSW facing trench section	ENE
18-19	Tr14 gen view + ditch [1401] in foreground	SE
20	Tr1 pit [101] post-ex	SE
21-22	Tr2 ditch [201] section	SW
23	Tr14 possible short ditch [1403]	NE
24	Tr2 gen view	NNW
25-28	South edge of field with break of slope, possible old beach	WSW/ENE
29	Tr15 ditch [1501] cleaned pre-ex	NE
30-31	Tr15 ditch [1501] cleaned pre-ex	SE
32-33	Tr17 ditch [1701] and gen view	WSW
34-35	Tr17 gen view	ENE
36-37	Tr17 furrow [1705]	WSW/ENE
38	Tr17 CPFD 1703	E
39	Tr17 possible furrow 1705 and view	NNE
40	Tr17 furrow [1707] at WSW end	ENE
41-43	Tr10 gen view + platform to S	ENE
44	Tr10 feature 1008 pre-ex Drying	NNW
45	Tr10 feature 1006 pre-ex No drying	WSW
46	Tr10 feature 1003 pre-ex Drying	SSE
47	Tr17 soil profile ENE end	NNW
48-49	Tr18 gen view	WSW
50	Tr18 ditch [1801]	WSW
51	Tr18 gen view	ENE
52	Tr18 soil profile	NNW
53	Tr16 gen view	SW
54	Tr16 trench section, NE end	NE
55-56	Tr17, furrow [1705] section + trench section	NNW
57	Tr16 gen view	NE
58	Tr16 dark patch, not archaeology (see trench sheet)	SW
59	Tr16 furrow [1601]	NE
60	Tr16 CFFD 1605 + furrow [1603] beyond	NE
61	Tr10 feature [1010] cleaned	NNW
62	Tr10 feature [1001] cleaned	SSE
63	Tr10 gen view	WSW
64-66	Tr10 feature 1003 section	WSW
67-68	Tr10 feature [1008] section	WSW
69-71	Tr15, ditch [1501] section	NE
72	Tr3 pre-ex	SE
73	Tr12 gen view	ENE
74	Tr12, pit [1201] pre-ex	WSW
75	Tr12, ditch [1203] pre-ex	WSW
76	Tr12 pit [1205]	WSW
77-78	Tr3 gen view	NW
79-83	Tr3 gen view + features at NW end	SE
84-87	Tr3 features, pre-ex	various
88	Tr12 ditch [1203] slot gen view	WSW

Shot No.	Summary description of subject	Facing
89	Tr12 ditch [1203] section	NE
90	Tr12 pit [1201] section	ENE
91	Tr12 pit [1201] 1/2 section gen view	NW
92	Tr11 gen view	WSW
93	Tr11 linear feature [1101]	WSW
94	Tr11 small pit [1103]	WSW
95	Tr11 small pit [1105]	WSW
96-97	Tr11 potential features pre investigation	WSW
98	Tr11 gen view	ENE
99	Tr13 gen view	ENE
100	Tr13 pit [1301]	SSE
101	Tr13 pit [1303]	SE
102	Tr13 pit [1305]	SSE
103	Tr13 ditch terminal (?) [1307]	WSW
104	Tr13 pit [1309]	WSW
105	Tr11 pit [1103] post-ex (no section)	SE
106	Tr13 pit [1309] section	WSW
107-108	Tr13 pit [1305] section (1/4) NNW facing	SSE
109	Tr13 pit [1305] section (1/4) ENE facing	WSW
110	Tr13 pit [1305] plan view	SSE
111	Tr13 pit [1305] general view	SE
112	Tr3 palisade trench [301] pre-ex	W
113	Tr3 double palisade slots [306], [309] exc	NW
114	Tr3 double palisade slots [306], [309] exc	W
115	Tr3 palisade trench [301] exc	E
116	Tr3 palisade trench [301] exc	S
117	Tr3 palisade trench [301] exc section	S
118	Tr4 gen view	WSW
119-120	Tr4 ditch [401]	WSW
121	Tr6 gen view	NNE
122	Tr6 soil profile SSW end	WNW
123	Tr6 possible feature (wasn't)	NNE
124	Tr6 possible feature (wasn't)	WNW
125	Tr6 possible feature with sondage (as 124)	WNW
126	Tr6 gen view	SSW
127	Tr5 gen view	SSW
128	Tr5 possible feature (NE-SW ditch terminal?)	NW
129	Tr5 possible feature with charcoal pre-ex	N
130	Tr5 possible feature with charcoal section (not archaeology)	NNE
131	Tr5 possible feature pre-ex	WNW
132	Tr5 possible ditch section, not clearly archaeology	NW
133	Tr5 possible pit pre-ex	NNE
134-135	Tr5 possible pit pre-ex & section. Not archaeological	ENE
136	Tr21 pre-ex	NNW
137	Tr3 pit [304] section WNW facing	ESE
138	Tr3 pit [304] plan view 1/2 section	SSW
139-140	Tr9 big feature [901] pre-ex	WSW
141-142	Tr9 feature [904] pre-ex	ENE
143	Tr19 gen view	WSW
144	Tr8 gen view	WSW
145-146	Tr9 feature [901] sondage	WSW
147-148	Tr8 ditch [801] pre-ex	ENE
149	Tr7 circular pit [701] pre-ex	ENE
150	Tr8 ditch [801] section gen view	ENE
151	Tr8 ditch [801] gen view	NE
152-153	Tr3 pit 318 cutting ditch 319/326	NW
154	Tr3 gen view of ditches 301 and 312/314	S

Shot No.	Summary description of subject	Facing
155-156	Tr9 pit [904] stone pre-removal	SSE
157	Tr9 stone post-removal - underside	N/A
158-159	Tr7 post hole [703] cleaned + gen view	ENE
160-161	Tr7 feature [706] cleaned + close-up	SSE
162-163	Tr7 pit [701] exc gen view + section	ENE
164	Tr9 circular pit [904] section	NNW+NE
165	Tr9 pits [912], [914]	WSW
166	Tr9 pits [912], [914]	SSE
167	Tr9 ditch [906] cleaned	NE
168	Tr9 ditch [906] cleaned	SW
169-172	Tr9 pit [904] section re-photograph	SSE, SW
173	Tr9 gen view of sunken area and the ENE end of the trench	E
174	Tr21 gen view	NNW
175	Tr21 gen view	NNE
176-177	Tr21 gen view	WSW
178-179	Tr9 pit [904] NNW facing trench section	various
180-184	Tr3 [312] [314] E facing section	various
185-186	Tr20 gen view	SE
187	Tr20 gen view	NW
188	Tr20 possible ditch pre-ex	NW
189-190	Tr3 pit [318] + groove [319] pre-ex	N
191	Tr3 pit [318] + groove [319] pre-ex	E
192	Tr21 returfed	NNW
193-194	Tr3 ditch [312]/[314] upper fill showing potential cut ([301]?) through upper fill	S+SE
195-196	Pit [318] section	S
197-200	Gully's [319, 326]	E+W
201-203	Pit [318] + plan	S
204-205	Ditch [321]/[327] SW facing section	NE
206-209	Ditch [321]/[327] NE facing section	SW
210	Ditch [321]/[327] slot plan view	NE
211	Tr20 trench across a probably natural feature, SSW facing section	NNE
212	Tr20 gen view of the above	N
213	Tr3 post holes [333], [335] pre-ex	ESE
214	Tr3 post holes [333], [335] pre-ex	SE
215	Tr3 post hole [335] sectioned + packing stone (336), pre-removal in [335] Plan view	ESE
216	Tr3 post-holes [333], [335] sections	ESE
217	Tr3 post hole [333] section	ESE
218	Tr3 post hole [335] section	ESE
219-223	Tr3 ditch [312]/[314] W facing section	E/ESE/ENE
224-225	Tr3 palisade trench [301]/[330] cut by ditch [312]/[314]	NNW
226	Tr3 as above, N side [301]	NNW
227	Tr3 as above, S side [330]	S
228-235	Tr3 gen views of central area	various
236	Tr3, possible post hole [338] plan view	E
237	General view of the castle and the evaluation area from Ward Law	SW

APPENDIX 3: Drawing Register

Dwg No.	Sheet No.	Scale	Plan / Section	Description/contexts
1	1	1:20	S	SW facing section of pit [101]
2	1	1:50	P	Plan of pit [101]
3	1	1:50	P	Post-ex plan drawing of pit [101]
4	1	1:20	S	NE facing section of ditch [201]
5	1	1:10	S	SW facing of gully [1403]
6	1	1:20	S	S facing section of furrow [1705]
7	1	1:10	S	W facing section of pit [1008]
8	1	1:10	S	W facing section of pit [1003]
9	1	1:20	S	NE facing section of ditch [1501]
10	1	1:10	S	NE facing of linear feature [1203]
11	2	1:20	S	W facing section of pit [1201]
12	2	1:10	S	E facing section of pit [1309]
13	1	1:10	S	NE facing profile of pit [1103]
14	1	1:10	P	Plan of pit [1103]
15	2	1:10	S	Pit [1305] ENE facing section, fills (1306), (1311)
16	2	1:10	S	Pit [1305] NNW facing section, fills (1306), (1311)
17	2	1:20	P	Pit [1305] 1/4 section plan
18	3	1:20	S	Ditch [801] S facing section
19	4	1:20	S	SE facing section of pit [904]
20	4	1:50	P	Plan of pit [904]
21	4	1:20	S	NW facing of pit [904]
22	2	1:20	P	Tr21 plan 2101-2103
23	3	1:10	S	SW facing section of linear [301]
24	3	1:50	P	Plan of [301]
25	3	1:20	S	W facing section of pit [701]
26	3	1:10	S	E facing section of ditch [901]
27	3	1:10	S	SE faing section of ditch [312]
28	3	1:10	S	N facing section of pits+ gully [318], [319]+[326]
29	4	1:50	P	Plan of ditch [321]
30	4	1:20	S	SW facing section of ditch [321] and re-cut [327]
31	4	1:20	S	NE facing section of ditch [321]
32	2	1:20	S	W facing section of palisade ditches [309] and [306]
33	2	1:20	P	Plan of ditches [309] and [306]
34	2	1:10	S	N facing section of pit [304]
35	3	1:10	S	SE facing section of pit [333]
36	3	1:10	S	SE facing section of pit [335]

APPENDIX 4: Sample Register

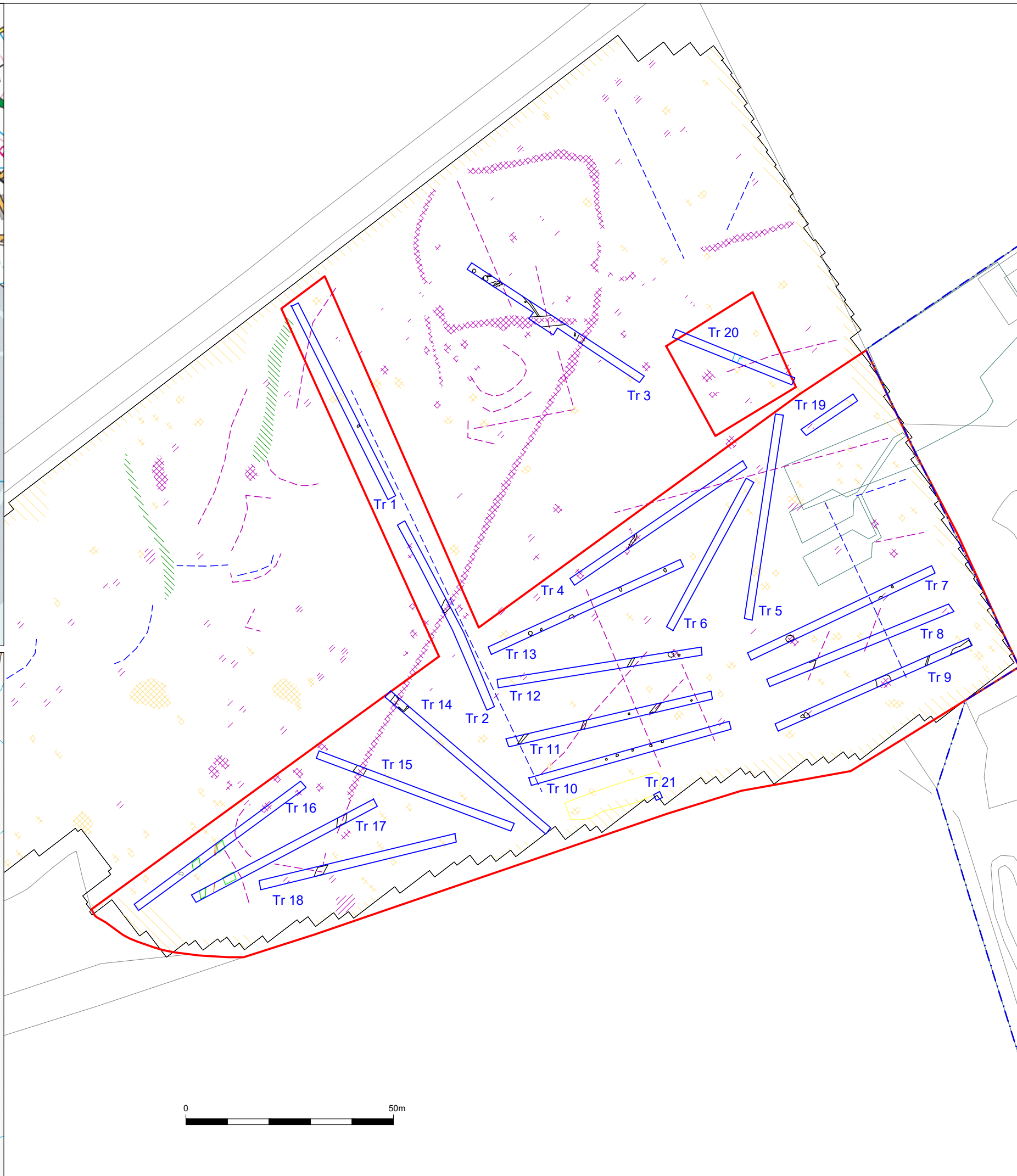
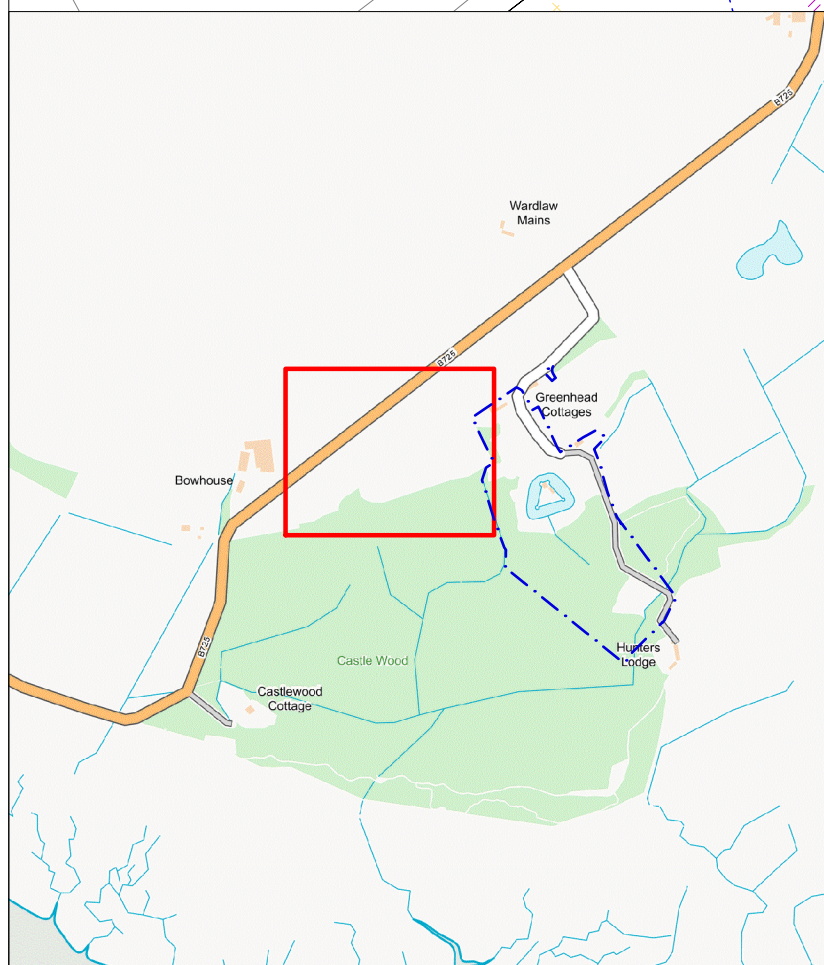
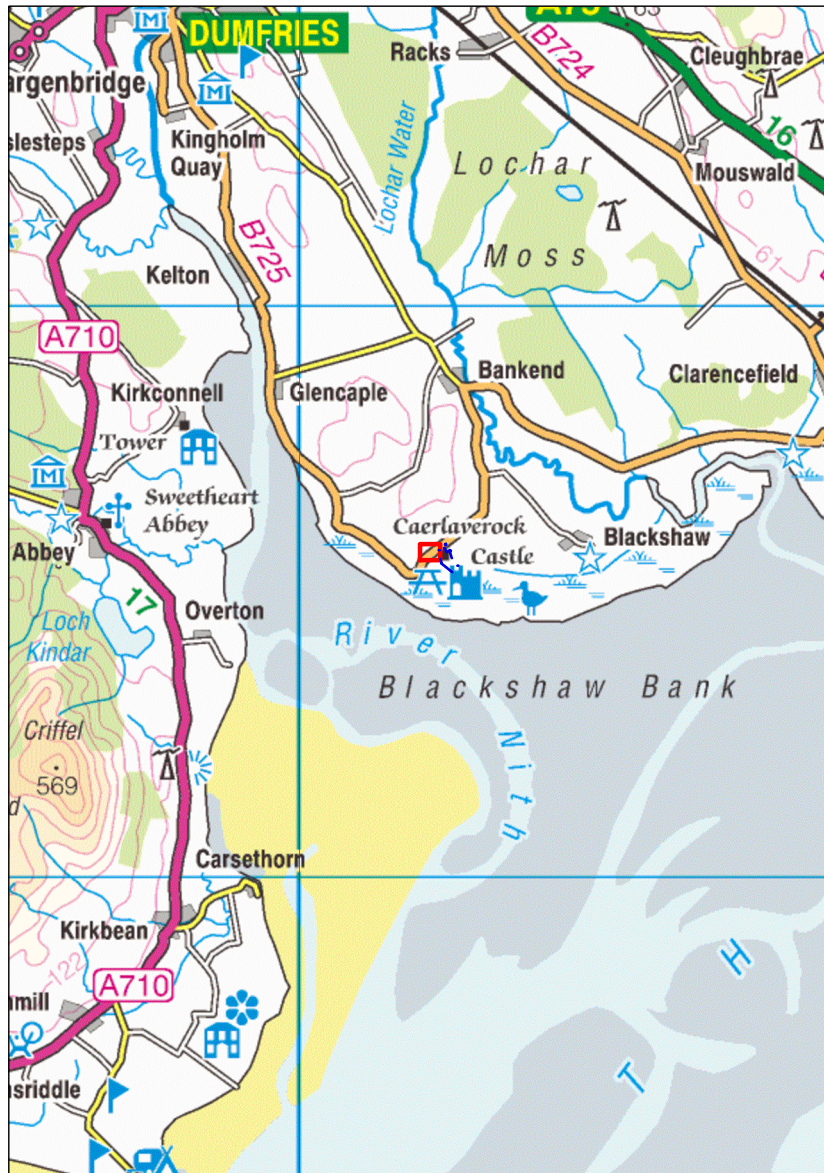
Sample No.	Context	Fill of	Sample type	Volume
1	1002	1001	Bulk	20L
2	1005	1003	Bulk	10L
3	1104	1103	Bulk	10L
4	1311	1305	Bulk	10L
5	302	301	Bulk	20L
6	910	904	Bulk	10L
7	905	904	Bulk	10L
8	910	904	Bulk	0.1L
9	905	904	Charcoal	0.1L
10	316	314	Bulk	40L
11	320	318	Bulk	30L
12	329	321	Bulk	20L

APPENDIX 5: Find Register

Tr.	Context	Find type	No.	Wt (g)	Notes	Spotdate
	001	Pottery	1	3	Scottish post-medieval reduced. Green glazed	15th–18th c
9	001	Glass	1	8	Green bottle body frag	Modern
9	001	Iron	1	5	Nail fragment	Modern
3	002	Flint	1	5	Possible lithic	
6	002	Flint	1	1	Possible lithic	
3	317	Burnt bone	1	1		
3	329	Fired clay	1	6	Kiln lining?	
8	802	Pottery	1	4	Scottish post-medieval reduced. Green glazed	15th–18th c
9	905	Pottery	1	3	Scottish white gritty wares	12th–14th c.
9	905	Stone	1		Worked fragment	
9	909	Stone	1		Probably unworked	
9	909	Pottery	1	18	Scottish post-medieval reduced/oxidised	15th–18th c
9	910	Stone	1		Possible column segment	Medieval
9	911	Jet?	1	3	Worked jet object	
9	911	Iron	1	93	Rowel spur. Broken and corroded. Rowel missing	14thc onwards
10	1009	Iron	1	11	Nail. Corroded head. Shaft square in section	
17	1706	Pottery	3	59	Scottish post-medieval reduced/oxidised. Glazed	15th–18th c

APPENDIX 6: Discovery and Excavation In Scotland Entry

LOCAL AUTHORITY:	Dumfries & Galloway
PROJECT TITLE/SITE NAME:	Caerlaverock Castle
PROJECT CODE:	MINA37
PARISH:	Caerlaverock
NAME OF CONTRIBUTOR:	Ian Suddaby
NAME OF ORGANISATION:	CFA Archaeology Ltd
TYPE(S) OF PROJECT:	Evaluation
NMRS NO(S):	NY06NW6
SITE/MONUMENT TYPE(S):	Pits, ditches, pit alignment, enclosure
SIGNIFICANT FINDS:	Rowel spur, medieval/post-medieval pottery, sandstone column fragment
NGR (2 letters, 6 figures)	NY 0236 6573
START DATE (this season)	August 2018
END DATE (this season)	August 2018
PREVIOUS WORK (incl. DES ref.)	None
MAIN (NARRATIVE) DESCRIPTION: (May include information from other fields)	<p>Twenty-one evaluation trenches were excavated which covered c. 10% of the proposed development site. Trench 3 did not lie within this proposed development site.</p> <p>The evaluation revealed that archaeological remains are widespread across the site. Few artefacts were found in primary contexts but the finds suggest that the identified features date broadly to the prehistoric, medieval and later medieval periods.</p>
PROPOSED FUTURE WORK:	None
CAPTION(S) FOR ILLUSTRS:	None
SPONSOR OR FUNDING BODY:	
ADDRESS OF MAIN CONTRIBUTOR:	CFA Archaeology Ltd, Old Engine House, Eskmills Park, Musselburgh, EH21 7PQ.
EMAIL ADDRESS:	
ARCHIVE LOCATION (intended/deposited)	Archive to be deposited in NHRE, Reports lodged with SMR.



Key:

- Red line boundary
- PIC Boundary
- Trench location
- Archaeological feature
- Possible archaeological feature
- Field drain
- Modern feature
- Rig and furrow
- Agriculture
- Archaeology
- Ditch/Pit
- Ferrous
- Magnetic disturbance
- Natural
- Negative trend
- Positive trend

Reproduced with the permission of Ordnance Survey on behalf of The Controller of Her Majesty's Stationery Office, © Crown copyright. CFA Archaeology Ltd, Old Engine House, Eskmills Park, Musselburgh EH21 7PQ AL100034785



CFA
ARCHAEOLOGY LTD

CFA ARCHAEOLOGY LTD
The Old Engine House
Eskmills Park
Musselburgh
East Lothian, EH21 7PQ
T: 0131 273 4380
F: 0131 273 4381
info@cfa-archaeology.co.uk
www.cfa-archaeology.co.uk

Title:
Location map and trench layout showing the geophysics results

Project:
Car Park Extension, Caerlaverock Castle (PIC 182), Dumfries & Galloway, Archaeological Evaluation

Client:
Historic Environment Scotland

Scale at A3:
1:1,000

Drawn by: SW	Checked: MJ	Date: 08/10/2018
------------------------	-----------------------	----------------------------

Report No: 3786	Fig. No: 1
---------------------------	----------------------





Fig. 2 - General view of Caerlaverock Castle and the evaluation area to the West from Ward Law

Project:
Car Park Extension, Caerlaverock Castle (PIC182), Dumfries & Galloway. Archaeological Evaluation



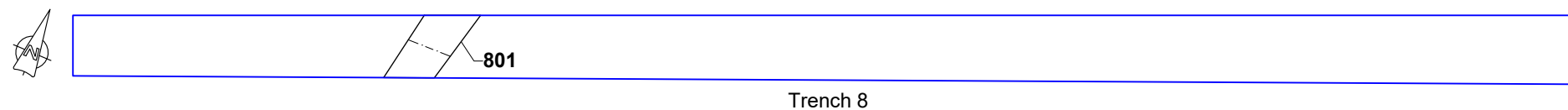
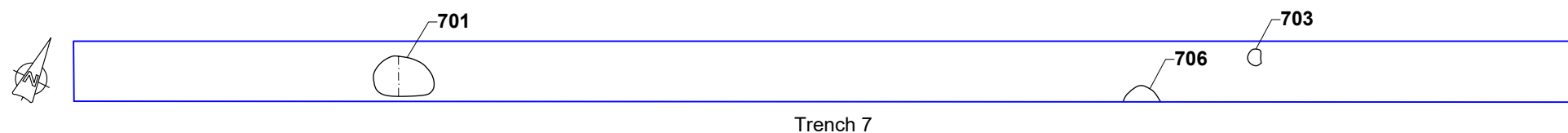
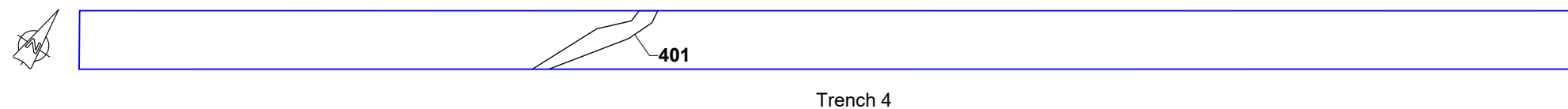
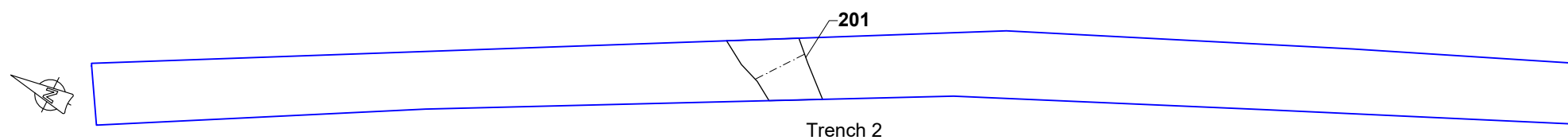
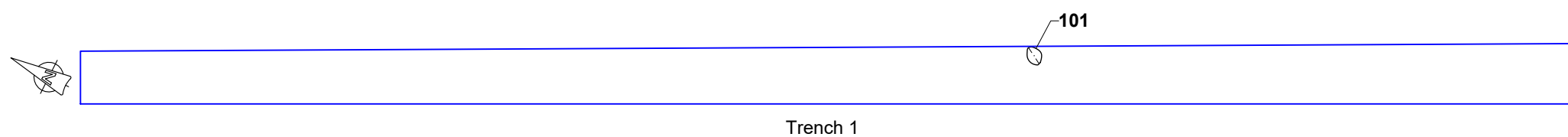
CFA ARCHAEOLOGY LTD
The Old Engine House
Eskmills Park
Musselburgh
East Lothian, EH21 7PQ
T: 0131 273 4380
F: 0131 273 4381
info@cfa-archaeology.co.uk
www.cfa-archaeology.co.uk

Client:
Historic Environment Scotland

Drawn by: MP	Checked: SW	Date: 08/10/18
Report No: 3786		Fig. No: 2

Key:

 Trench outline



CFA ARCHAEOLOGY LTD
The Old Engine House
Eskmills Park
Musselburgh
East Lothian, EH21 7PQ
T: 0131 273 4380
F: 0131 273 4381
info@cfa-archaeology.co.uk
www.cfa-archaeology.co.uk

Title:
Trenches 1-2, 4, 7-8, trench plans

Project:
Car Park Extension,
Caerlaverock Castle (PIC 182),
Dumfries & Galloway,
Archaeological Evaluation

Client:
Historic Environment Scotland

Scale at A3:
1:200

Drawn by: MP	Checked: SW	Date: 09/10/2018
-----------------	----------------	---------------------

Report No: 3786	Fig. No: 3
--------------------	---------------



Fig. 4 - Trench 1, general view from the North



Fig. 5 - Trench 1, pit 101, NW facing section

Project:
Car Park Extension, Caerlaverock Castle (PIC182), Dumfries & Galloway. Archaeological Evaluation



CFA ARCHAEOLOGY LTD
The Old Engine House
Eskmills Park
Musselburgh
East Lothian, EH21 7PQ
T: 0131 273 4380
F: 0131 273 4381
info@cfa-archaeology.co.uk
www.cfa-archaeology.co.uk

Client:
Historic Environment Scotland

Drawn by: MP	Checked: SW	Date: 08/10/18
Report No: 3786		Fig. No: 4-5



Fig. 6 - Trench 2, general view from the North



Fig. 7 - Trench 2, ditch 201 SW facing section

Project:
Car Park Extension, Caerlaverock Castle (PIC182), Dumfries & Galloway. Archaeological Evaluation



CFA ARCHAEOLOGY LTD
The Old Engine House
Eskmills Park
Musselburgh
East Lothian, EH21 7PQ
T: 0131 273 4380
F: 0131 273 4381
info@cfa-archaeology.co.uk
www.cfa-archaeology.co.uk

Client:
Historic Environment Scotland

Drawn by: MP	Checked: SW	Date: 08/10/18
Report No: 3786		Fig. No: 6-7



Fig. 8 - Trench 4, linear ditch 401 from the WSW



Fig. 9 - Trench 7, pit 701 section from the WSW

Project:
Car Park Extension, Caerlaverock Castle (PIC182), Dumfries & Galloway. Archaeological Evaluation



CFA ARCHAEOLOGY LTD
The Old Engine House
Eskmills Park
Musselburgh
East Lothian, EH21 7PQ
T: 0131 273 4380
F: 0131 273 4381
info@cfa-archaeology.co.uk
www.cfa-archaeology.co.uk

Client:
Historic Environment Scotland

Drawn by: MP	Checked: SW	Date: 08/10/18
Report No: 3786		Fig. No: 8-9



Fig. 10 - Trench 7, probable post-hole 703 from the WSW



Fig. 11 - Trench 7, probable pit 706 from the NNE

Project:
Car Park Extension, Caerlaverock Castle (PIC182), Dumfries & Galloway. Archaeological Evaluation



CFA ARCHAEOLOGY LTD
The Old Engine House
Eskmills Park
Musselburgh
East Lothian, EH21 7PQ
T: 0131 273 4380
F: 0131 273 4381
info@cfa-archaeology.co.uk
www.cfa-archaeology.co.uk

Client:
Historic Environment Scotland

Drawn by: MP	Checked: SW	Date: 08/10/18
Report No: 3786		Fig. No: 10-11



Fig. 12 - Trench 8, ditch 801 section from the WSW

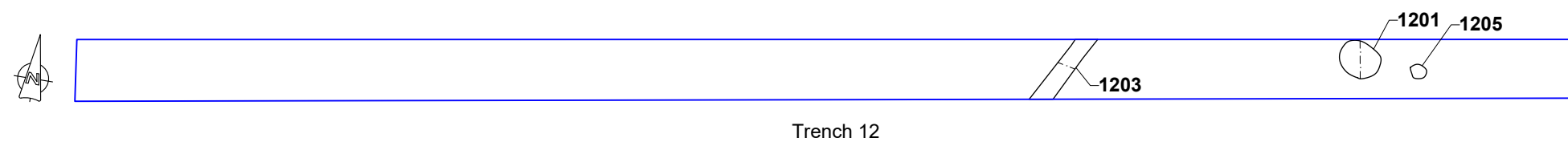
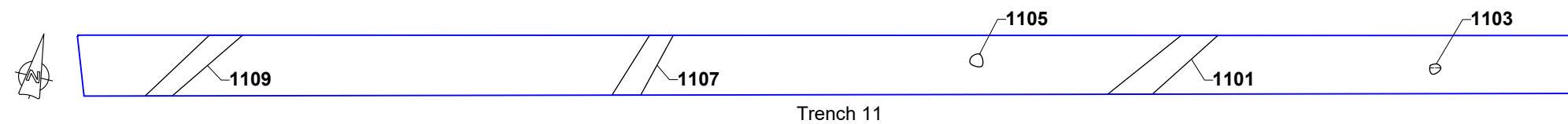
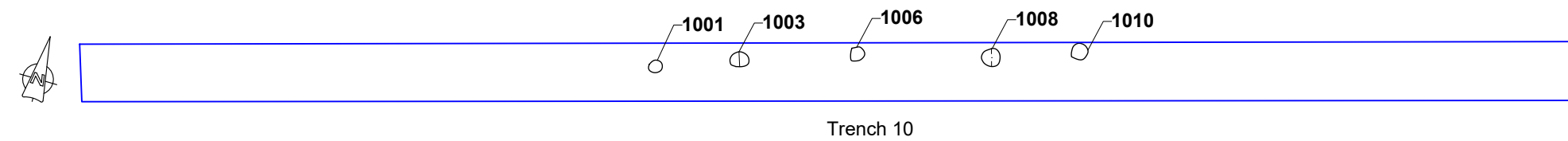
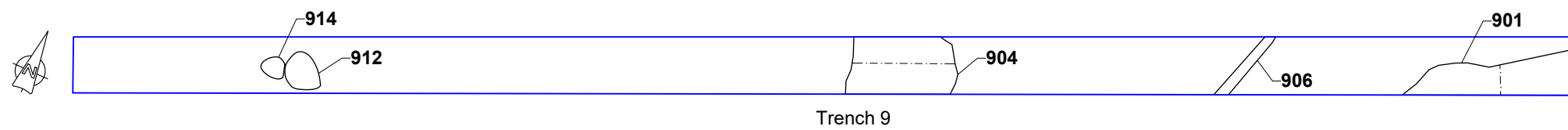
Project:
Car Park Extension, Caerlaverock Castle (PIC182), Dumfries & Galloway. Archaeological Evaluation



CFA ARCHAEOLOGY LTD
The Old Engine House
Eskmills Park
Musselburgh
East Lothian, EH21 7PQ
T: 0131 273 4380
F: 0131 273 4381
info@cfa-archaeology.co.uk
www.cfa-archaeology.co.uk

Client:
Historic Environment Scotland

Drawn by: MP	Checked: SW	Date: 08/10/18
Report No: 3786		Fig. No: 12



Key:

 Trench outline

CFA ARCHAEOLOGY LTD
 The Old Engine House
 Eskmills Park
 Musselburgh
 East Lothian, EH21 7PQ
 T: 0131 273 4380
 F: 0131 273 4381
 info@cfa-archaeology.co.uk
 www.cfa-archaeology.co.uk

Title:
Trenches 9-12, trench plans

Project:
Car Park Extension,
Caerlaverock Castle (PIC 182),
Dumfries & Galloway,
Archaeological Evaluation

Client:
Historic Environment Scotland

Scale at A3:
1:200

Drawn by: MP	Checked: SW	Date: 09/10/2018
-----------------	----------------	---------------------

Report No: 3786	Fig. No: 13
--------------------	----------------



Fig. 14 - Trench 9, the edge of large feature 901 at the ENE end of the trench



Fig. 15 - Trench 9, large pit 904 section from the SW

Project:
Car Park Extension, Caerlaverock Castle (PIC182), Dumfries & Galloway. Archaeological Evaluation



CFA ARCHAEOLOGY LTD
The Old Engine House
Eskmills Park
Musselburgh
East Lothian, EH21 7PQ
T: 0131 273 4380
F: 0131 273 4381
info@cfa-archaeology.co.uk
www.cfa-archaeology.co.uk

Client:
Historic Environment Scotland

Drawn by: MP	Checked: SW	Date: 08/10/18
Report No: 3786		Fig. No: 14-15



Fig. 16 - Trench 9, pits 912, 914 from the NNE



Fig. 17 - Trench 10 general view from the ENE

Project:
Car Park Extension, Caerlaverock Castle (PIC182), Dumfries & Galloway. Archaeological Evaluation



CFA ARCHAEOLOGY LTD
The Old Engine House
Eskmills Park
Musselburgh
East Lothian, EH21 7PQ
T: 0131 273 4380
F: 0131 273 4381
info@cfa-archaeology.co.uk
www.cfa-archaeology.co.uk

Client:
Historic Environment Scotland

Drawn by: MP	Checked: SW	Date: 08/10/18
Report No: 3786		Fig. No: 16-17



Fig. 18 - Trench 10, post-hole 1003 section from the ENE



Fig. 19 - Trench 10, post-hole 1008 section from the ENE

Project:
Car Park Extension, Caerlaverock Castle (PIC182), Dumfries & Galloway. Archaeological Evaluation



Client:
Historic Environment Scotland

Drawn by: MP	Checked: SW	Date: 08/10/18
Report No: 3786		Fig. No: 18-19

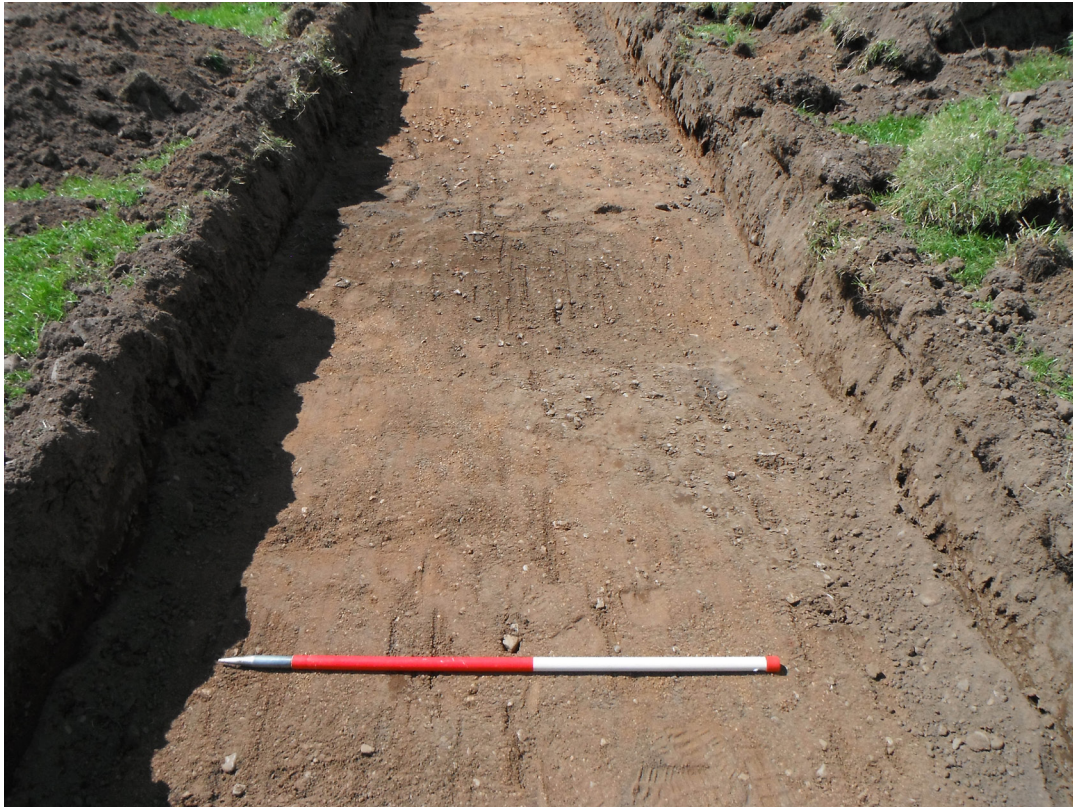


Fig. 20 - Trench 11, linear ditch 1101 from the ENE



Fig. 21 - Trench 11, pit 1103 pre-excitation from the ENE

Project:
Car Park Extension, Caerlaverock Castle (PIC182), Dumfries & Galloway. Archaeological Evaluation



CFA ARCHAEOLOGY LTD
The Old Engine House
Eskmills Park
Musselburgh
East Lothian, EH21 7PQ
T: 0131 273 4380
F: 0131 273 4381
info@cfa-archaeology.co.uk
www.cfa-archaeology.co.uk

Client:
Historic Environment Scotland

Drawn by: MP	Checked: SW	Date: 08/10/18
Report No: 3786		Fig. No: 20-21



Fig. 22 - Trench 12, pit 1201 section from the SE



Fig. 23 - Trench 12, linear ditch 1203 section from the SW

Project:
Car Park Extension, Caerlaverock Castle (PIC182), Dumfries & Galloway. Archaeological Evaluation



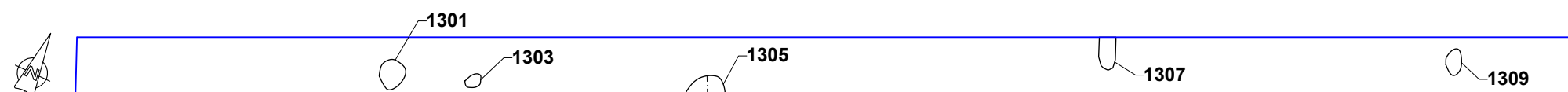
CFA ARCHAEOLOGY LTD
The Old Engine House
Eskmills Park
Musselburgh
East Lothian, EH21 7PQ
T: 0131 273 4380
F: 0131 273 4381
info@cfa-archaeology.co.uk
www.cfa-archaeology.co.uk

Client:
Historic Environment Scotland

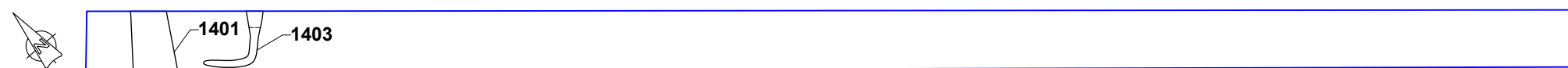
Drawn by: MP	Checked: SW	Date: 08/10/18
Report No: 3786		Fig. No: 22-23

Key:

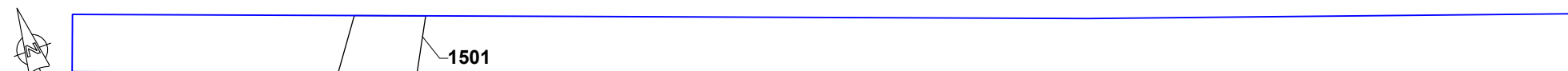
- Trench outline
- Field drain
- Stone
- Rig and furrow



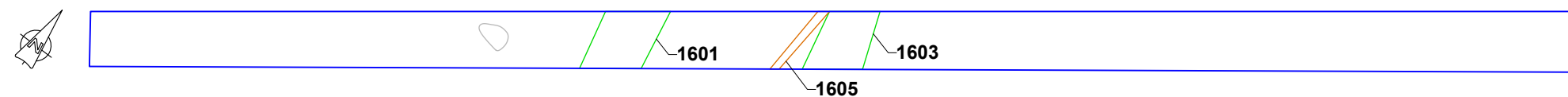
Trench 13



Trench 14



Trench 15



Trench 16



CFA ARCHAEOLOGY LTD
The Old Engine House
Eskmills Park
Musselburgh
East Lothian, EH21 7PQ
T: 0131 273 4380
F: 0131 273 4381
info@cfa-archaeology.co.uk
www.cfa-archaeology.co.uk

Title:
Trenches 17-18, 21, trench plans

Project:
**Car Park Extension,
Caerlaverock Castle (PIC 182),
Dumfries & Galloway,
Archaeological Evaluation**

Client:
Historic Environment Scotland

Scale at A3:
1:200

Drawn by: MP	Checked: SW	Date: 09/10/2018
------------------------	-----------------------	----------------------------

Report.No: 3786	Fig. No: 24
---------------------------	-----------------------



Fig. 25 - Trench 13 general view from the WSW



Fig. 26 - Trench 13, pit 1301 from the NNW

Project:
Car Park Extension, Caerlaverock Castle (PIC182), Dumfries & Galloway. Archaeological Evaluation



CFA ARCHAEOLOGY LTD
The Old Engine House
Eskmills Park
Musselburgh
East Lothian, EH21 7PQ
T: 0131 273 4380
F: 0131 273 4381
info@cfa-archaeology.co.uk
www.cfa-archaeology.co.uk

Client:
Historic Environment Scotland

Drawn by: MP	Checked: SW	Date: 08/10/18
Report No: 3786		Fig. No: 25-26



Fig. 27 - Trench 13, pit 1305 section from the NNW



Fig. 28 - Trench 13, pit 1309 section from the ENE

Project:
Car Park Extension, Caerlaverock Castle (PIC182), Dumfries & Galloway. Archaeological Evaluation



CFA ARCHAEOLOGY LTD
The Old Engine House
Eskmills Park
Musselburgh
East Lothian, EH21 7PQ
T: 0131 273 4380
F: 0131 273 4381
info@cfa-archaeology.co.uk
www.cfa-archaeology.co.uk

Client:
Historic Environment Scotland

Drawn by: MP	Checked: SW	Date: 08/10/18
Report No: 3786		Fig. No: 27-28



Fig. 29 - Trench 14, with linear ditch 1401 in the foreground from the NW



Fig. 30 - Trench 15, general view from the WNW

Project:
Car Park Extension, Caerlaverock Castle (PIC182), Dumfries & Galloway. Archaeological Evaluation



CFA ARCHAEOLOGY LTD
The Old Engine House
Eskmills Park
Musselburgh
East Lothian, EH21 7PQ
T: 0131 273 4380
F: 0131 273 4381
info@cfa-archaeology.co.uk
www.cfa-archaeology.co.uk

Client:
Historic Environment Scotland

Drawn by: MP	Checked: SW	Date: 08/10/18
Report No: 3786		Fig. No: 29-30



Fig. 31 - Trench 15, linear ditch 1501 section from the SW



Fig. 32 - Trench 16, possible furrow 1601 from the SW

Project:
Car Park Extension, Caerlaverock Castle (PIC182), Dumfries & Galloway. Archaeological Evaluation



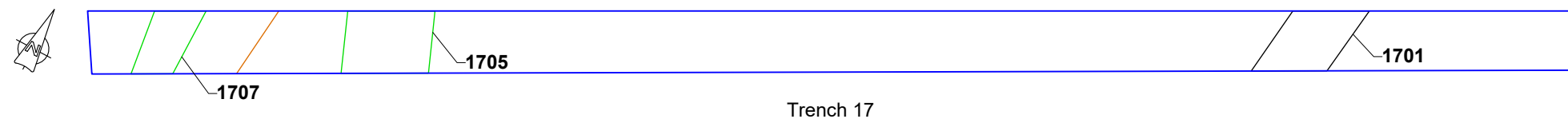
CFA ARCHAEOLOGY LTD
The Old Engine House
Eskmills Park
Musselburgh
East Lothian, EH21 7PQ
T: 0131 273 4380
F: 0131 273 4381
info@cfa-archaeology.co.uk
www.cfa-archaeology.co.uk

Client:
Historic Environment Scotland

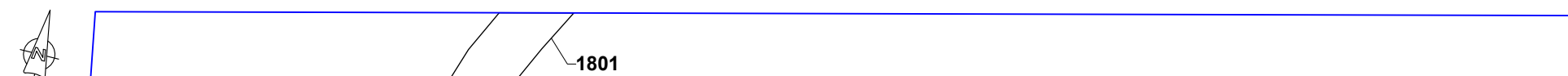
Drawn by: MP	Checked: SW	Date: 08/10/18
Report No: 3786		Fig. No: 31-32

Key:

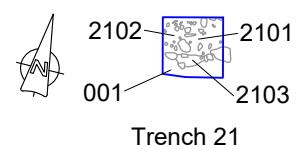
-  Trench outline
-  Field drain
-  Stone
-  Rig and furrow



Trench 17



Trench 18



Trench 21



CFA ARCHAEOLOGY LTD
The Old Engine House
Eskmills Park
Musselburgh
East Lothian, EH21 7PQ
T: 0131 273 4380
F: 0131 273 4381
info@cfa-archaeology.co.uk
www.cfa-archaeology.co.uk

Title:
Trenches 17-18, 21, trench plans

Project:
**Car Park Extension,
Caerlaverock Castle (PIC 182),
Dumfries & Galloway,
Archaeological Evaluation**

Client:
Historic Environment Scotland

Scale at A3:
1:200

Drawn by: MP	Checked: SW	Date: 09/10/2018
------------------------	-----------------------	----------------------------

Report No: 3786	Fig. No: 33
---------------------------	-----------------------



Fig. 34 - Trench 17, possible furrow 1705 section and the view NE



Fig. 35 - Trench 18, ditch 1801 from the WSW

Project:
Car Park Extension, Caerlaverock Castle (PIC182), Dumfries & Galloway. Archaeological Evaluation



CFA ARCHAEOLOGY LTD
The Old Engine House
Eskmills Park
Musselburgh
East Lothian, EH21 7PQ
T: 0131 273 4380
F: 0131 273 4381
info@cfa-archaeology.co.uk
www.cfa-archaeology.co.uk

Client:
Historic Environment Scotland

Drawn by: MP	Checked: SW	Date: 08/10/18
Report No: 3786		Fig. No: 34-35



Fig. 36 - Trench 20, general view from the SE



Fig. 37 - Trench 21 from the SSE

Project:
Car Park Extension, Caerlaverock Castle (PIC182), Dumfries & Galloway. Archaeological Evaluation



CFA ARCHAEOLOGY LTD
The Old Engine House
Eskmills Park
Musselburgh
East Lothian, EH21 7PQ
T: 0131 273 4380
F: 0131 273 4381
info@cfa-archaeology.co.uk
www.cfa-archaeology.co.uk

Client:
Historic Environment Scotland

Drawn by: MP	Checked: SW	Date: 08/10/18
Report No: 3786		Fig. No: 36-37



Fig. 38 - Trench 21 and a general view of the platform from the ENE

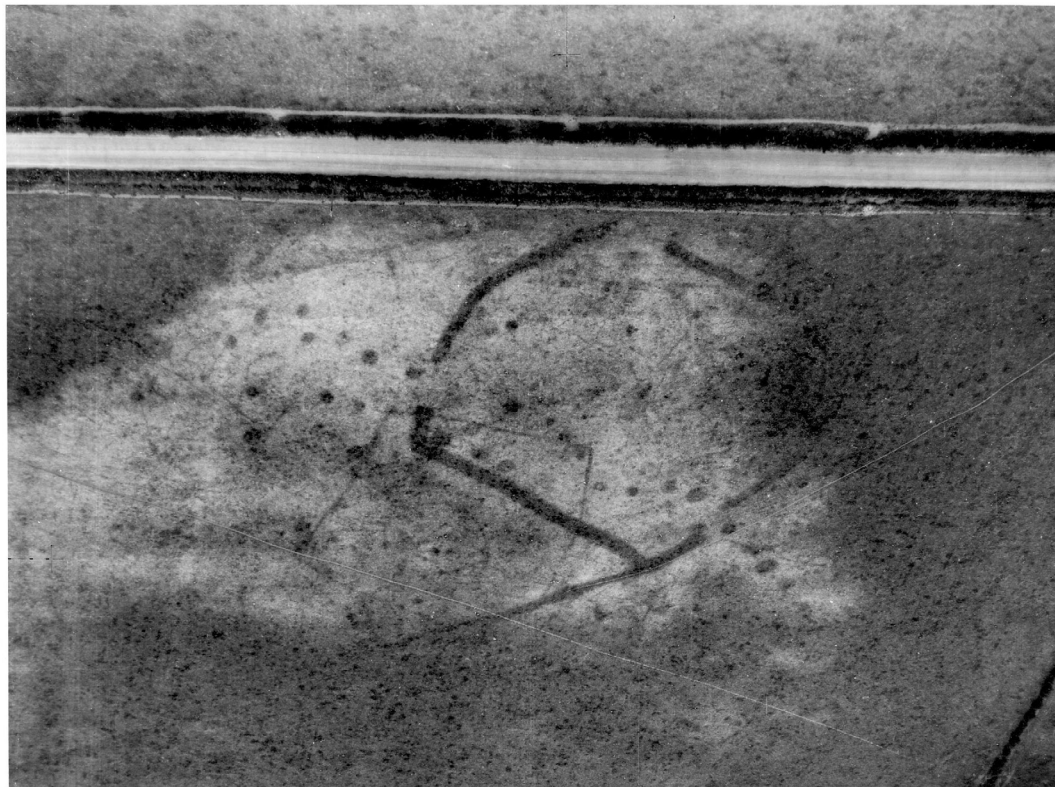


Fig. 39 - Aerial photograph of the overall site investigated in Trench 3

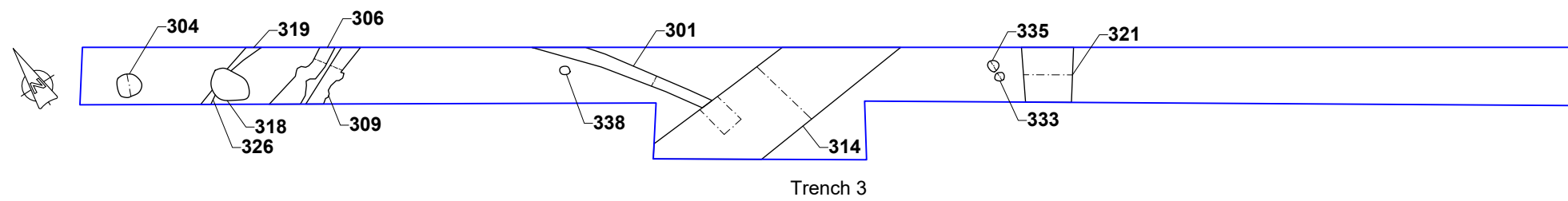
Project:
Car Park Extension, Caerlaverock Castle (PIC182), Dumfries & Galloway. Archaeological Evaluation



CFA ARCHAEOLOGY LTD
The Old Engine House
Eskmills Park
Musselburgh
East Lothian, EH21 7PQ
T: 0131 273 4380
F: 0131 273 4381
info@cfa-archaeology.co.uk
www.cfa-archaeology.co.uk

Client:
Historic Environment Scotland

Drawn by: MP	Checked: SW	Date: 08/10/18
Report No: 3786		Fig. No: 38-39



Key:

Trench outline



CFA
ARCHAEOLOGY LTD

CFA ARCHAEOLOGY LTD
The Old Engine House
Eskmills Park
Musselburgh
East Lothian, EH21 7PQ
T: 0131 273 4380
F: 0131 273 4381
info@cfa-archaeology.co.uk
www.cfa-archaeology.co.uk

Title:
Trench 3, plan

Project:
**Car Park Extension,
Caerlaverock Castle (PIC 182),
Dumfries & Galloway,
Archaeological Evaluation**

Client:
Historic Environment Scotland

Scale at A3:
1:200

Drawn by: MP	Checked: SW	Date: 09/10/2018
------------------------	-----------------------	----------------------------

Report No: 3786	Fig. No: 40
---------------------------	-----------------------



Fig. 41 - Trench 3, general view of the excavated features from the SSE



Fig. 42 - Trench 3, probable palisade trench 301 from the N

Project:
Car Park Extension, Caerlaverock Castle (PIC182), Dumfries & Galloway. Archaeological Evaluation



CFA ARCHAEOLOGY LTD
The Old Engine House
Eskmills Park
Musselburgh
East Lothian, EH21 7PQ
T: 0131 273 4380
F: 0131 273 4381
info@cfa-archaeology.co.uk
www.cfa-archaeology.co.uk

Client:
Historic Environment Scotland

Drawn by: MP	Checked: SW	Date: 08/10/18
Report No: 3786		Fig. No: 41-42



Fig. 43 - Trench 3, parallel probable palisade trenches 306, 309 from the E



Fig. 44 - Trench 3, square enclosure ditch 312, 314 section from the W

Project:
Car Park Extension, Caerlaverock Castle (PIC182), Dumfries & Galloway. Archaeological Evaluation



CFA ARCHAEOLOGY LTD
The Old Engine House
Eskmills Park
Musselburgh
East Lothian, EH21 7PQ
T: 0131 273 4380
F: 0131 273 4381
info@cfa-archaeology.co.uk
www.cfa-archaeology.co.uk

Client:
Historic Environment Scotland

Drawn by: MP	Checked: SW	Date: 08/10/18
Report No: 3786		Fig. No: 43-44



Fig. 45 - Trench 3, linear ditch 321, 327 section from the SW



Fig. 46 - Trench 3, pit 318 cutting narrow slot 319/326 pre-excitation from the SE

Project:
Car Park Extension, Caerlaverock Castle (PIC182), Dumfries & Galloway. Archaeological Evaluation



CFA ARCHAEOLOGY LTD
The Old Engine House
Eskmills Park
Musselburgh
East Lothian, EH21 7PQ
T: 0131 273 4380
F: 0131 273 4381
info@cfa-archaeology.co.uk
www.cfa-archaeology.co.uk

Client:
Historic Environment Scotland

Drawn by: MP	Checked: SW	Date: 08/10/18
Report No: 3786		Fig. No: 45-46



Fig. 47 - Trench 3, pit 318 section from the N



Fig. 48 - Trench 3, post-holes 333, 335 pre-excitation with ditch 321, 327 beyond from the NW

Project:
Car Park Extension, Caerlaverock Castle (PIC182), Dumfries & Galloway. Archaeological Evaluation



CFA ARCHAEOLOGY LTD
The Old Engine House
Eskmills Park
Musselburgh
East Lothian, EH21 7PQ
T: 0131 273 4380
F: 0131 273 4381
info@cfa-archaeology.co.uk
www.cfa-archaeology.co.uk

Client:
Historic Environment Scotland

Drawn by: MP	Checked: SW	Date: 08/10/18
Report No: 3786		Fig. No: 47-48



CFA ARCHAEOLOGY
www.cfa-archaeology.co.uk

HEAD OFFICE - Musselburgh

Old Engine House
Eskmills Park, Musselburgh
East Lothian, EH21 7PQ

t: +44 (0) 131 273 4380
e: enquiries@cfa-archaeology.co.uk

Leeds

Offices C1 & C2
Clayton Business Centre, Midland Road
Leeds, LS10 2RJ

t: +44 (0) 113 271 6060
e: yorkshire@cfa-archaeology.co.uk

Manchester

44G9, Europa Business Park
Bird Hall Lane, Cheadle Heath
Manchester, SK3 0XA

t: +44 (0) 161 428 8224
e: manchester@cfa-archaeology.co.uk

Milton Keynes

Suite 11, Letchworth House
Chesney Wold, Bleak Hall
Milton Keynes, MK6 1NE

t: +44 (0) 1908 226 124
e: miltonkeynes@cfa-archaeology.co.uk

Carlisle

Warwick Mill Business Village
Warwick Bridge, Carlisle
Cumbria, CA4 8RR

t: +44 (0) 1228 564 531
e: cumbria@cfa-archaeology.co.uk

Sheffield

Office 5, Ecclesfield Business Centre
46 Stocks Hill, Ecclesfield
Sheffield, S35 9YT

t: +44 (0) 114 327 1108
e: sheffield@cfa-archaeology.co.uk

Leicester

Business Box
3 Oswin Road, Brailsford Industrial Estate
Leicester, LE3 1HR

t: +44 (0) 116 279 5156
e: leicestershire@cfa-archaeology.co.uk

Hertfordshire

Amwell House
9 Amwell Street, Hoddesdon
Hertfordshire, EN11 8TS

t: +44 (0) 845 017 9847
e: herts@cfa-archaeology.co.uk