



CFA ARCHAEOLOGY

Professional cultural heritage consultants - branches nationwide
enquiries@cfa-archaeology.co.uk



Moray East Offshore Wind Farm, Onshore Cable Route Trial Trenching of Cropmark Sites

Archaeological Evaluation
Report No. 3800

Author(s):
Ian Suddaby MA MCIfA
Magnus Kirby MA FSA Scot ACIfA
Christina Hills MA ACIfA



CFA ARCHAEOLOGY LTD

The Old Engine House
Eskmills Business Park
Musselburgh
East Lothian
EH21 7PQ

Tel: 0131 273 4380
Fax: 0131 273 4381
email: info@cfa-archaeology.co.uk
web: www.cfa-archaeology.co.uk

Authors	Ian Suddaby MA MCIfA Magnus Kirby MA FSA Scot ACIfA Christina Hills MA ACIfA
Illustrator	Marta Perlińska MA PCIfA
Approver	Melanie Johnson MA PhD FSA Scot MCIfA
Commissioned by	Moray Offshore Windfarm (East) Limited
Date issued	December 2018
Version	3
Oasis No.	cfaarcha1-335562
Planning Application No	APP/2015/0478
Grid Refs	WA1026: NJ 6631 6460 WA1019: NJ 6613 6334 WA1020: NJ 6585 6119 WA1053: NJ 6850 5950 WA1056: NJ 6886 5965 WA1058: NJ 6911 5977

This document has been prepared in accordance with CFA Archaeology Ltd standard operating procedures.

Moray East Offshore Wind Farm, Onshore Cable Route

Trial Trenching of Cropmark Sites

Archaeological Evaluation

Report 3800

CONTENTS

1.	Introduction	5
2.	Working Methods	6
3.	Archaeological Results	7
4.	Conclusions	12
5.	References	13

Appendices

1.	Trench Summary	14
2.	Photographic Register	19
3.	Context Register	24
4.	Drawings Register	25
5.	Samples Register	25
6.	Finds Register	25
7.	Discovery & Excavation Scotland Entry	26

Illustrations (bound at rear)

- Fig. 1 Location map showing the areas where evaluation took place
- Fig. 2 General view of area WA1026 from the North
- Fig. 3 Plan of Trenches 1-11 in area WA1026
- Fig. 4 General view of Trench 3 showing the variable natural subsoil
- Fig. 5 Trench 7 from the NNW, surface bedrock
- Fig. 6 General view of area WA1019 from the North. The archaeological features were on the terrace and knoll to the left of the nearest trench
- Fig. 7 Plan of Trenches 12-19 in area WA1019
- Fig. 8 Trench 13, view of the variable natural subsoil, with patches of soft sand and patches of chemically stained silty sand

- Fig. 9 Trench 14, detail view of the natural subsoil with patches of gravel and circles of sand, a linear band of sand and patches of firm silty sand
- Fig. 10 Trench 16, pit 1601 pre-excavation from the SSE
- Fig. 11 Trench 16, pit 1601 NE facing section
- Fig. 12 Trench 16, pit 1601 post-ex with the excavated stones replaced in the pit
- Fig. 13 Trench 17, pit 1701 pre-excavation from the E
- Fig. 14 Trench 17, pit 1701 North facing section
- Fig. 15 General view of area WA1020 from the NW
- Fig. 16 Plan of Trenches 20-28 in area WA1020
- Fig. 17 Trench 24 general view from the WNW
- Fig. 18 Trench 27 general view from the NW
- Fig. 19 Trench 23, ditch 2301 from the West
- Fig. 20 Trench 23, ditch 2301 from the South
- Fig. 21 General view of area WA1053 from the ENE
- Fig. 22 Plan of Trenches 56-61 in area WA1053
- Fig. 23 Trench 57, general view from the SW
- Fig. 24 General view of area WA1056 from area WA1053. The wooded Cormack's Hillock is in the centre of the photo
- Fig. 25 General view of area WA1056 and Cormack's Hillock to the East of the public road
- Fig. 26 Plan of Trenches 31-45 in area WA1056
- Fig. 27 Trench 36, general view from the SW showing the variable natural subsoil
- Fig. 28 Trench 40, general view from the SW showing the variable natural subsoil
- Fig. 29 Trench 40, linear feature sectioned from the SE, this is probably not archaeological
- Fig. 30 General view of area WA1058 from the East. The archaeological features were located on the edge of the terrace at the top of the scarp
- Fig. 31a Plan of Trenches 31-33, 41, 42 & 46-51 in area WA1058

Fig. 31b Plan of Trenches 46, 48, 50 & 51 in area WA1058

Fig. 32 Trench 46 general view from the SW

Fig. 33 Trench 46, pit 4601 NE facing section

Fig. 34 Trench 46, pit 4605 NE facing section

Fig. 35 Trench 46, pit 4607 NE facing section

Fig. 36 Trench 46, possible pit 4609 in the trench edge from the NW

Fig. 37 Trench 48 and pit 4801 from the West

Fig. 38 Trench 48, pit 4801 section from the South

Fig. 39 Trench 51, general view from the SW

Fig. 40 Trench 51, pit 5101 from the NW

Fig. 41 Trench 51, pit 5109 unexcavated from the SW

Fig. 42 Trench 51, large pit (or pits) 5115 unexcavated from the NW

Fig. 43 Trench 51, pit 5103, NNW facing section

Fig. 44 Trench 51, pit 5113 NW facing section

Fig. 45 Trench 51, linear feature 5117 and section from the SE

1. INTRODUCTION

1.1 General

This report presents the results of an archaeological evaluation undertaken by CFA Archaeology Ltd (CFA) in November 2018 within the Cable Route Corridor which will link the Moray East Offshore Wind Farm to the Moray East Substation. The work took place within six cropmark sites to the west and south of Banff, Aberdeenshire. Grid references for these locations are provided below and they are shown on Fig. 1. The work was commissioned by Natural Power Consultants on behalf of Moray Offshore Wind Farm (East) Limited.

- WA1026: NJ 6631 6460
- WA1019: NJ 6613 6334
- WA1020: NJ 6585 6119
- WA1053: NJ 6850 5950
- WA1056: NJ 6886 5965
- WA1058: NJ 6911 5977

A Written Scheme of Investigation (WSI) dated 23rd March 2018 covering this programme of works was produced by CFA on behalf of Moray Offshore Windfarm (East) Limited. The WSI was designed to fulfil the requirements of the Section 42 Planning Permission in Principle Application Reference BB/APP/2015/0478 (the Section 42 Consent) and of the Aberdeenshire Council Archaeology Service (ACAS).

1.2 Background

Full Planning Permission (Reference No. APP/2018/0623 and APP/2018/0624) has been granted for the construction of a network of onshore installations associated with Moray East Offshore Windfarm. These consist of an onshore transition jointing pit, c.33km of underground electrical cables, and the construction of two substations (including temporary construction compounds, access tracks, laydown areas, and other associated works). The planning permission was subject to a programme of archaeological works including a trial trenching evaluation prior to installation of the cable circuits.

This report covers the trial trenching undertaken on six previously recorded cropmark sites which will be impacted by the cable route corridor. This work relates to condition 1(w) of the Section 42 consent. A previous programme of archaeological trial trenching associated with this project was undertaken for the combined substation area and the results produced under separate cover (Suddaby and Kirby 2018)

The Cable Route Corridor crosses the known location of a number of cropmark sites which are recorded on the Aberdeenshire Council Historic Environment Record (HER) and identified in the cultural heritage chapter of the Environmental Statement (site numbers prefixed with 'WA'). Areas where trial trenching was required were:

- Cropmarks of prehistoric settlement and enclosure (**WA1026, 1020, 1056, 1058**);
- Cropmarks of prehistoric burials (**WA1019**); and

- Cropmarks of uncertain date (WA1053).

1.3 Objectives

The project's aims and objectives were:

- To establish the presence/absence, extent, condition, character, quality and date of any archaeological features or deposits within the proposed development areas through trial trenching evaluation
- To establish the vulnerability of any archaeological features to the proposed development
- To propose mitigation measures where appropriate to avoid, reduce or offset any predicted negative impacts on the archaeological resource.

2. WORKING METHODS

2.1 General

In addition to the WSI, a Method Statement (MS) was produced for this programme of works and was followed throughout. CFA Archaeology Ltd follows the Chartered Institute for Archaeologists' Code of Conduct, Standards and Guidance.

2.2 Evaluation

The terms of the WSI required a 7% trial trench evaluation, with an additional 3% contingency available if archaeological features were identified. The size of the areas evaluated differed slightly from those outlined within the WSI (Table 4-1 therein) because minor changes were made to the line of the cable-route subsequent to the aforementioned document being produced,

A total of fifty-nine trenches (Tr.1-28, 31-61) were excavated at the six locations totalling 5192m², covering c.7.22% of the available areas where the cable route corridor crossed the six sites. The requirement for contingency trenches was activated in WA1058 where archaeological features were identified.

In several locations, modern services impeded the archaeological work. Details are included below and the services themselves are shown on the trench plans.

Topsoil and any modern overburden were removed by a tracked mechanical excavator equipped with a 1.8m wide smooth-bladed ditching bucket. All groundbreaking work was carried out under constant archaeological supervision. Any further excavation required to fulfil the objectives of the evaluation was carried out by hand.

Sample excavation of features was undertaken sufficient to understand their likely date, nature, extent and condition. Sample excavation was limited to remove only such deposits as necessary to achieve the evaluation objectives.

All excavation and on-site recording was carried out according to standard CFA procedures, principally by drawing, by photography and by completing standard CFA

record forms. The stratification of all excavated areas was recorded whether or not significant archaeological deposits were identified.

Trench positions were surveyed using industry standard electronic surveying equipment and all trenches were backfilled on completion of recording.

3. ARCHAEOLOGICAL RESULTS

3.1 General

Numbers in bold refer to contexts, a full list of which is contained in Appendix 3. A summary of the trenches excavated is contained in Appendix 1.

In situ archaeological remains such as structures, ditches, pits etc are referred to as Features. Individual artefacts, whether discovered within features or in topsoil, are referred to as Finds.

A summary of the site numbers, HER numbers and the trench numbers is provided in Table 1. Due to them being adjacent, HER sites NJ65NE0019 and NJ65NE0040 (WA1056 and WA1058) were combined for the purpose of calculating the area/trenching requirements (Table 1 below), but are described separately in the following text. The locations of the trenching areas are shown on Fig. 1.

Site No.	HER No.	Trench Nos.	Area trenched (m ²)
WA1026	NJ66SE0104	1-11	990
WA1019	NJ66SE0078	12-19	755
WA1020	NJ66SE0003	20-28	657
WA1053	NJ65NE0027	56-61	540
WA1056, WA1058	NJ65NE0019, NJ65NE0040	31-55	2250

Table 1: Summary of trenching data

In the text below, the evaluation areas are described from north to south.

3.2 Trial Trenching

3.2.1 Area WA1026

Area WA1026 was located between Banff and Whitehills on a gentle East or NE facing slope at around 30m aOD (Fig. 2). The B9038 and the B9139 currently form the northern and southern boundaries of the area. It is annually ploughed. Cropmarks interpreted as relating to potentially prehistoric settlement and enclosure have been recorded within this area.

An E-W gas main in the south of the area was avoided during the works with a suitable buffer. A previously unrecorded plastic water pipe was seen in Trenches 2-3. The locations of both these services are shown on Fig. 3.

Eleven trenches were excavated (Fig. 3), covering 990m². In general, 0.3m of topsoil (**001**) overlay a sandy natural subsoil (**003**) but this included both patches and bands of gravelly sand, silty sand and more compact chemically stained sand (Fig. 4) and

bedrock was recorded in Trenches 7-9 (Fig. 5); these factors may be the source of at least some of the cropmarks.

No archaeological features were present.

3.2.2 Area WA1019

Area WA1019 was located in the Hills of Boyndie, around 3km WSW of Banff at around 55m aOD. The field is undulating but is predominantly North facing (Fig. 6). A deep E-W gully is situated at the southern end of Trench 19 and a low knoll is located in the area of Trench 17. It is annually ploughed. Cropmarks interpreted as possibly relating to prehistoric burials have been recorded in this area.

Eight trenches were excavated (Fig. 7), covering 755m². In general, 0.3m of topsoil (**001**) overlay a sandy natural subsoil (**003**) but this included both patches and bands of gravelly sand, silty sand and more compact chemically stained sand (Figs. 8-9). In Trenches 12 and 13 what appeared to be natural N-S aligned erosion gullies were recorded, running at 90° to the contours); these factors may be the source of at least some of the cropmarks. Trench 12 was extended slightly to allow further recording of the gully. Both these and the E-W gully noted above contained a subsoil (**002**) up to 0.4m deep under the topsoil (**001**) and above the natural subsoil (**003**).

Two archaeological features were recorded, one in Trench 16 and one in Trench 17 (Fig. 7). In both cases, the trench was slightly enlarged to fully expose the feature and an area of natural subsoil adjacent to it.

Trench 16

In Trench 16, sub-circular pit **1601** (Fig. 10) measured 1.45m by 1.2m and was aligned NNW-SSE. The feature was fully excavated and was 0.15m deep (Fig. 11). It contained a high proportion of stones (shown replaced in Fig. 12) with a matrix of dark charcoal-rich silty sand (**1602**). No finds were recovered.

Trench 17

In Trench 17, oval pit **1701** (Fig. 13) measured 2.1m by 1.4m and was aligned close to N-S. The feature was fully excavated and was 0.3m deep (Fig. 14). Two fills were present, an upper deposit of mottled orange and brown fine sand with charcoal (**1703**) over a basal fill of white and brown sand with charcoal (**1702**). No finds were recovered.

3.2.3 Area WA1020

Area WA1020 was located at around 65m aOD between the farms of Lower Inchdrewer and Easter Culbeuchly around 4km SW of Banff. The channelled course of the Burn of Bachlaw forms the NE side of the area (Fig. 15). The land adjacent to the burn is wet and uncultivated but the SW side of the area is more elevated and is annually ploughed. There is a strong possibility that deep made ground is present to the NW of Trenches 27-28. Cropmarks interpreted as relating to potentially prehistoric settlement and enclosure have been recorded within this area.

Modern services were present in this area. A water main supposedly aligned roughly NW–SE was impossible to locate with certainty and a buffer was placed around it, but its course may lie somewhat to the SW of that indicated on the service drawings. The overhead and underground electricity cables indicated to be in the NW end of the area did not in fact lie within the evaluation area. The N-S overhead electricity cables indicated on drawings supplied by the client do not exist. The uncertainty over the location of the NW-SE water main considerably reduced the area available for evaluation. The locations of all these services are shown on Fig. 16.

Nine trenches (Trenches 20-28) were excavated (Fig. 16), covering 657m². On the wet lower ground, a subsoil (**002**) with peat (**004**) below was recorded under the topsoil (**001**) and here the natural was of sand and occasional stones (**003**, Fig. 17). On the more elevated ground, 0.3m of topsoil (**001**) overlay a compact natural silty sand with frequent cobbles (**003**, Fig. 18).

Trench 23

A linear ditch (**2301**) was recorded in Trench 23. This feature (Figs. 19-20) was 2.3m wide and 0.7m deep. It was NE-SW aligned. A large diameter clay pipe drain was recorded within a probable re-cut (**2303**) in the base and the fills of both cuts (**2302**, **2304**) were of mixed topsoil and re-deposited natural subsoil with stones. This feature is depicted as a field boundary on the First Edition Ordnance Survey map (1871).

There were numerous clay piped field drains on the lower lying ground adjacent to the Burn of Bachlaw but none were present on the more elevated ground. A glazed ceramic drain was recorded at the NNE end of Trench 21.

3.2.4 Area WA1053

Area WA1053 was located on relatively elevated ground near the summit of an unnamed knoll on the eastern flanks of Govel Hill (Fig. 21), 0.33km to the SE of Hills of Berryhillocks and 0.66km W of South Sandlaw. The field is East facing and annually ploughed. Cropmarks interpreted as relating to potentially prehistoric settlement and enclosure have been recorded within this area.

A buffer was put in place for an electricity cable running along the southern boundary of the trenching area.

Six trenches (Trenches 56-61) were excavated in this area (Fig. 22). Topsoil (**001**) with a depth of 0.3m overlay natural subsoil (**003**). Trench 57 is shown in Fig. 23.

No archaeological remains were present.

3.2.5 Area WA1056

Area WA1056 was located on a gentle NE facing slope adjacent to a wooded knoll called Cormack's Hillock which lies between the farms of North and South Sandlaw (Figs. 24-25). This site is spread over two fields, straddling the minor road that runs parallel to the River Deveron. These fields are annually ploughed. Cropmarks

interpreted as relating to potentially prehistoric settlement and enclosure have been recorded within this area.

A buffer was put in place around services running in the verge of the public road.

Nineteen trenches (Trenches 31-45, 52-55) were excavated in this area (Fig. 26). Trench 52 was an additional contingency trench excavated in order to investigate the extent of the archaeological features identified within Area WA1058.

Topsoil (**001**) had a depth of 0.3m and overlay up to 0.3m of subsoil (**002**) or natural subsoil (**003**). The natural subsoil was very varied, with patches and bands of softer sand or gravelly sand within the trenches, examples are shown in Figs. 27-28); these factors may be the source of at least some of the cropmarks.

Apart from a possible linear feature in Trench 40 consisting of a narrow band of greyish sand which overlay a heavily iron stained natural subsoil (Fig. 29) and which is considered unlikely to be archaeological, no archaeological remains were present in this area.

3.2.6 Area WA1058

Area WA1058 was located in the field adjacent and to the SE of area WA1056 (Fig. 30). There was a notable change of elevation between the two fields. The area of WA1058 evaluated consists of a gentle slope at the western end (Trenches 46, 50-51), with a steeper scarp (Trenches 47-48) onto a lower floodplain (Trench 49) nearest to the River Deveron (Fig. 30). This field is annually ploughed. Cropmarks interpreted as relating to potentially prehistoric settlement and enclosure have been recorded within this area.

Six trenches were excavated (Fig. 31). Archaeological remains were recorded in Trenches 46, 48 and 51. Trench 51 was an additional contingency trench excavated in order to investigate the extent of the archaeological features identified within this area.

Trench 46

Trench 46 (Fig. 32) contained six features.

Pit **4601** (Fig. 33) was half-sectioned. It measured around 1m in width and 0.9m in depth. It was filled (**4602**) with a dark grey sandy gravel. Two fairly large flat stones were identified towards the base of this pit. One of these stones was recovered as it showed possible signs of working (see Section 3.3), and a sample of fill **4602** was recovered for analysis. Pit **4601** had been re-cut by a larger, shallower feature pit (**4603**). This measured 1.6m NW-SE by 1.5m NE-SW and was 0.3m deep. It was filled (**4604**) with a greyish-brown silty sand. No finds were recovered.

Pit **4605** (Fig. 34) was fully excavated. It measured around 1.2m NW-SE and 1.3m NE-SW. It was 0.3m in depth. It was filled (**4606**) with a grey-brown silty sand. No finds were recovered, but a sample of fill **4606** was recovered for analysis.

Pit **4607** (Fig. 35) was fully excavated. It measured around 1.6m NW-SE and 1.8m NE-SW. It was 0.25m in depth. It was filled (**4608**) with a grey-brown silty sand and several flat sandstone slabs. No finds were recovered, but a sample of fill **4608** was recovered for analysis.

Features **4609**, **4611** and **4613** were not excavated. All contained similar fills to those sectioned. Feature **4609** is shown partially exposed in Fig. 36.

Trench 48

Trench 48 (Fig. 37) contained one feature. Pit **4801** was only partially exposed but measured 2.6m E-W and was 0.25m deep (Fig. 38). It was cut into gravelly sands on a moderate slope. The single fill (**4802**) was dark orange-brown silty sand. No finds were recovered.

Trench 51

Trench 51 (Fig. 39) contained nine features. Features **5101** (Fig. 40), **5105**, **5107**, **5109** (Fig. 41), **5111** and **5115** (Fig. 42) were not excavated. Their dimensions and descriptions are in the appendices.

Pit **5103** (Fig. 43) was half-sectioned. It measured 0.55m WSW-ENE and 0.45m NNW-SSE. It was 0.25m in depth. It was filled (**5104**) with a dark grey silty sand. No finds were recovered, but a sample of fill **5104** was recovered for analysis.

Pit **5113** (Fig. 44) was half-sectioned. It measured around 0.4m NE-SW and 0.5m NW-SE. It was 0.1m in depth. It was filled (**5114**) with a dark grey silty sand and burnt bone. No finds were recovered, but a sample of fill **5114** was recovered for analysis.

Linear feature **5117** (Fig. 45) was sectioned. It measured between 0.8m and 0.9m in width and 0.25m in depth. It was filled (**5118**) with a dark grey silty sand containing burnt bone. A small sample of bone (Section 3.3 below) and a sample of fill **5118** were recovered for analysis.

3.3 Finds by Christina Hills

A small number of finds were recovered on site, they are described below and detailed in Appendix 6.

Six fragments of burnt bone were recovered from linear feature **5117**; they are probably animal bone, and their fragmentary nature makes closer identification difficult.

One large flat stone was retained from pit **4601**; it shows some signs of possible working on its surface.

4. CONCLUSIONS

An archaeological trial trenching evaluation (7%) was undertaken to the west and south of Banff within six cropmark sites (NJ66SE0104, NJ66SE0078, NJ66SE0003, NJ65NE0027, NJ65NE0019 and NJ65NE0040) which lay within the corridor for the cable route which will link the Moray East Offshore Wind Farm to the Moray East Substation. These cropmarks were recorded as prehistoric settlement and enclosure (NJ66SE0104, NJ66SE0003, NJ65NE0019 and NJ65NE0040), prehistoric burials (NJ66SE0078), and cropmarks of uncertain date (NJ65NE0027).

A group of sixteen pits identified within cropmark site NJ65NE0040 (Trenches 46, 48 and 51) is thought to be prehistoric in date. These features will be directly impacted upon within the cable corridor as a result of topsoil stripping and excavation for the cable trench. The features identified are likely to relate to the prehistoric settlement identified from the cropmarks and have the potential to add to the current corpus of knowledge about the prehistory of Moray.

A linear feature identified within cropmark NJ66SE0003 (Trench 23) is a field boundary relating to 19th century agricultural improvements. This feature has no archaeological significance and no further work in mitigation is required.

Two isolated pits identified within cropmark site NJ66SE0078 (Trenches 16 and 17) are of unknown date and function. These features have been fully excavated and recorded and no further work in mitigation is required.

No other features, finds or deposits of archaeological significance were recorded. Later remains such as field drainage are of no archaeological importance but were nevertheless recorded as they form part of the record of local land-use.

Both the mechanical removal of topsoil and excavation for the cable trench pose a significant threat to the survival and integrity of any archaeological remains. It is therefore recommended that a programme of small-scale archaeological excavation is undertaken in relation to the group of pit features recorded within cropmark NJ65NE0040 (Area WA1058). However, it is recognised that the final decision on any mitigation required lies with the planning authority as advised by ACAS.

The project archive, comprising all CFA record sheets, maps and reports, will be deposited with the National Record of the Historic Environment and copies of reports will be lodged with Aberdeenshire Council HER.

A summary statement will be submitted for publication in *Discovery and Excavation in Scotland* (See Appendix 7) and will also be reported on through *OASIS Scotland*.

5. REFERENCES

Bibliographic

Suddaby I. and Kirby M. 2018, *Combined Substation Area, Burnside/Upper Mains of Asleid, New Deer, Aberdeenshire: Archaeological Evaluation* CFA Data Structure Report No. 3650.

Cartographic

Ordnance Survey First Edition 6" map, 1871, *Banffshire, Sheet X.*

APPENDIX 1: Trench Summary

Trench	Size	Orientation	Depth	Description
1	50.0m x 1.8m	NNW-SSE	0.3m	0.3m of topsoil over a compact sandy gravel, or gravely sand natural. No archaeology recorded.
2	50.0m x 1.8m	NNE-SSW	0.4m	0.3m of topsoil over c.0.1m of bioturbated horizon, not an agricultural subsoil. No archaeology recorded.
3	50.0m x 1.8m	NE-SW	0.4m	0.3m of topsoil over c.0.1m of bioturbated horizon, not an agricultural subsoil. Natural at NE end was deposits of sandy gravel alternating with stained ginger sand. At the SW end it was mostly compact and stained sand. No archaeology recorded.
4	50.0m x 1.8m	N-S	0.3m	0.3m of topsoil over natural. No Archaeology recorded.
5	50.0m x 1.8m	NE-SW	0.3-0.4m	0.3m of topsoil over a stained sand and gravel natural at the NE end, 0.3m of topsoil over 0.1m of subsoil over stained sand natural at SW end. No archaeology recorded.
6	50.0m x 1.8m	NE-SW	0.3-0.4m	0.3m of topsoil over 0.1m of subsoil at NE end, topsoil over natural at SW end. Natural was a firm stained sand, with near surface bedrock towards SW end. No archaeology recorded.
7	50.0m x 1.8m	NNW-SSE	0.3m	0.3m of topsoil over near surface bedrock. At the SSE end natural is a ginger sandy gravel with iron pan concentrations. No archaeology recorded.
8	50.0m x 1.8m	ENE-WSW	0.3m	0.3m of topsoil over a sandy gravel natural, quite homogeneous except for the bedrock. No archaeology recorded.
9	50.0m x 1.8m	N-S	0.3m	0.3m of topsoil over natural, near surface bedrock at N end, yellow silty sand with several large boulders mid trench, more stony at S end. One possible feature, likely a stone hole, 0.5m x 0.45m. No other archaeology recorded.
10	50.0m x 1.8m	N-S	0.45m	0.3m of topsoil over 0.15m of sub soil over a sandy-silt and gravel natural. No archaeology recorded.
11	50.0m x 1.8m	EWE-WSW	0.3-0.4m	0.3m of topsoil over sandy gravel natural at the WSW end, with occasional large stones. 0.3m of topsoil over a shallow 0.1m of buried modern plough soil at ENE end. One possible feature, revealed to be a stone hole.
12	50.0m x 1.8m	NNW-SSE	0.3-0.6m	0.3m of topsoil over friable and stained sands, some patches of small gravel and plough scars. 0.3m of topsoil over 0.3m of similar subsoil at the NNW end. A N-S aligned gully was found c.6.0m from the SSE end of the trench, 0.4m deep and c.4.0m wide. A short extension (c.8.0m x 1.8m) was excavated to get a section through feature. Fills looked natural, possibly a post-glacial erosion feature. No other archaeology recorded.
13	50.0m x 1.8m	NNE-SSW	0.3-0.5m	0.3m of topsoil over 0.2m of subsoil at SSW end, 0.3m of topsoil over natural sands at NNE end. Similar N-S shallow gully, 0.1m deep and 2.0-3.0m wide, as seen in Tr12. No archaeology recorded.
14	50.0m x 1.8m	ENE-WSW	0.3m	0.3m of topsoil over varied natural. Patches of silty sand, gravelly sand, clayey silt and sandy gravel. No archaeology recorded.
15	50.0m	NW-SE	0.3m	0.3m of topsoil over homogeneous natural, with

Trench	Size	Orientation	Depth	Description
	x 1.8m			plough scars. No archaeology was recorded.
16	50.0m x 1.8m	NNW-SSE	0.3m	0.3m of topsoil over natural, a ginger or yellow-brown medium sand with pebbles. One pit was recorded [1601] at SSE end of trench. Trench was extended by 3.5m x 1.8m to fully expose feature. Pit was 1.45m x 1.2m and 0.15m deep, aligned NNW-SSE and filled with dark charcoal-silt sand with a number of large angular rocks in the centre.
17	50.0m x 1.8m	NNE-SSW	0.3- 0.55m	0.3m of topsoil over a lens of WBS then 0.25m of orange-brown sand before cleaner natural sand. 0.3m of topsoil over natural across rest of trench. One pit [1701] was excavated, 2.1m x 1.4m and 0.3m deep, and filled by [1702] and [1703]. Trench was extended 3.0m x 4.5m to fully expose feature.
18	50.0m x 1.8m	WSW-ENE	0.3- 0.45m	0.3m of topsoil over 0.15m of subsoil over pale yellow-orange sand at ENE end, 0.3m of topsoil over natural at WSW end. No archaeology recorded.
19	50.0m x 1.8m	NNW-SSE	0.3-0.7m	0.3m of topsoil over natural sand at NNW end. Gully towards other end had deeper deposits - 0.3m of topsoil over 0.1m of similar material, over 0.2m of yellow-brown silty sand over 0.1m of darker brown silty sand. No archaeology recorded.
20	25.0m x 1.8m	NNE-SSW	0.4- 0.85m	0.3m of topsoil over 0.1m of subsoil over a yellowish-grey sandy silt natural at the SSW end. At base of slope mid trench there was 0.3m of topsoil over 0.2m of subsoil, over 0.15m of mixed grey gritty silt and re-deposited peat, followed by 0.20m of sandy peaty silt and pebbles over a grey-blue sandy silt natural. NNE end had 0.3m of topsoil over 0.2m of subsoil over natural. No archaeology was recorded.
21	25.0m x 1.8m	NNE-SSW	0.35- 0.8m	Deposits same as Tr20, deepest in the centre and NNE end, 0.35m to the SSW end. No archaeology was recorded. Glazed ceramic drain at the NNE end of the trench.
22	25.0m x 1.8m	N-S	0.3-0.6m	0.3m of topsoil over orange-white gravelly sand natural at the S end. 0.3m of topsoil over 0.3m of streaky buff coloured peaty sandy silt, over 0.1m of silty brown peat over natural. No archaeology recorded.
23	50.0m x 1.8m	NW-SE	0.3-0.4m	0.3m of topsoil over natural at NW end, 0.3m of topsoil over 0.1m of subsoil over natural to the SE end. A field boundary ditch [2301] shown on the OS First Edition map was recorded near the NW end, 2-3m wide and 0.7m deep below natural. A clay pipe field drain was recorded in the base.
24	50.0m x 1.8m	ESE-WNW	0.5m	0.3m of topsoil over 0.2m of peat over a creamy yellow-white sand with frequent stones. No archaeology recorded.
25	40.0m x 1.8m	WNW-ESE	0.55- 1.0m	At the WNW end, 0.3m of topsoil over 0.4m of orangy-brown silty sand subsoil, over 0.15m of grey-brown fine sand and silt, which is over 0.15m of mixed grey sand and peaty lenses. Natural is a course grey sand and stones. At the ESE end, 0.3m of topsoil overlies 0.1m of subsoil which is over 0.15m of brown silty peat and above a grey yellow-blue sand natural. No archaeology was recorded.
26	50.0m	WNW-ESE	0.3m	0.3m of topsoil over natural, an unattractive yellow-

Trench	Size	Orientation	Depth	Description
	x 1.8m			creamy grey silty sand with frequent angular cobbles and boulders. No archaeology recorded.
27	50.0m x 1.8m	NW-SE	0.3m	0.3m of topsoil over natural, an unattractive yellow-creamy grey silty sand with frequent angular cobbles and boulders. No archaeology recorded.
28	50.0m x 1.8m	NW-SE	0.3m	0.3m of topsoil over natural, an unattractive yellow-creamy grey silty sand with frequent angular cobbles and boulders. No archaeology recorded.
31	50.0m x 1.8m	NE-SW	0.6-0.8m	At the SW end, 0.3m of dark grey-brown sandy silt topsoil overlies 0.5m of mid-brown silty sand silt subsoil, over an orange slightly silty sand natural. NE end, 0.6m of topsoil over 0.2m subsoil over natural. No archaeology recorded.
32	50.0m x 1.8m	E-W	0.3-0.7m	At the E end, 0.2m of dark grey-brown sandy silt topsoil overlies 0.4m of mid-brown silty sand silt subsoil, over an orange slightly silty sand natural. W end, 0.3m of topsoil over natural. No archaeology recorded.
33	50.0m x 1.8m	NW-SE	0.3-1.0m	At the SE end, 0.3m of dark brown sandy silt topsoil over 0.6m of mid-brown silty sand subsoil, over slightly silty orange sand natural. NW end, dark brown silt topsoil directly over mottled beige and orange clayey sand. Very stony. No archaeology recorded.
34	50.0m x 1.8m	E-W	0.4m	0.3m of dark brown topsoil directly overlying an orange-brown clayey sand natural. No archaeology recorded.
35	50.0m x 1.8m	SW-NE	0.3-0.4m	0.3m of dark brown sandy silt topsoil over mottled orangey-brown sands and gravels
36	50.0m x 1.8m	SW-NE	0.5-0.7m	0.3m of dark brown silty sand topsoil over 0.3m of mid-brown silty sand subsoil over natural at NE end, 0.4m of topsoil directly over natural at SW end. Natural was an orange sand, slightly clayey in places, with patches of gravel. No archaeology was recorded.
37	50.0m x 1.8m	WSW-ENE	0.4m	0.25m of dark brown sandy silt over 0.1m of mid-brown silty sand over natural at ENE end, 0.3m of topsoil directly over natural at WSW end. Natural was an orange, slightly clayey sand, mottled in places with patches containing numerous angular stones. No archaeology recorded.
38	50.0m x 1.8m	E-W	0.45-0.6m	0.3m of dark brown sandy silt over 0.2m of orangey-brown silty sand over natural at the W end. 0.35m of topsoil directly over natural at E end. Natural was an orange, slightly clayey sand with patches of numerous angular stones and slightly gravelly in places. No archaeology was recorded.
39	50.0m x 1.8m	E-W	0.3-0.5m	0.25m of dark brown sandy silt topsoil over 0.2m of mid-brown silty sand subsoil over natural at E end. Topsoil directly over natural at W end. Natural was an orange and beige sand, slightly clayey at the E end. No archaeology was recorded.
40	50.0m x 1.8m	SW-NE	0.4-0.5m	0.3m of dark brown sandy silt topsoil over 0.1m of mid-brown silty sand subsoil over natural at NE end. Topsoil directly overlies natural at SW end. Natural was an orange sand, slightly clayey at extreme SW end. One possible linear feature was noted, 1.8m x 0.4m and 0.1m deep, with a greyish brown gravelly sand fill. No other archaeology was

Trench	Size	Orientation	Depth	Description
				recorded.
41	50.0m x 1.8m	SW-NE	0.5-1.5m	0.4m of dark brown sandy silt topsoil over orangey beige, slightly silty sand natural in the NE end. 1.1m of Topsoil in the SW end. No archaeology recorded.
42	50.0m x 1.8m	NE-SW	0.4-0.5m	0.35m of dark brown sandy silt topsoil over orangey-beige gravelly sand. Trench not dug to natural at SW end due to presence of large rubble field drain running full length. No archaeology recorded.
43	50.0m x 1.8m	SW-NE	0.4- 0.45m	0.35m of dark brown sandy silt topsoil over orange sand natural at NE end and orange-brown mottled sandy clay at SW end. No archaeology recorded.
44	50.0m x 1.8m	SW-NE	0.4-0.5m	0.3m of dark brown sandy silt topsoil over orangey-brown sand at NE end, 0.4m of topsoil over mottled beige sandy clay natural at SW end. No archaeology recorded.
45	50.0m x 1.8m	SE-NW	0.3- 0.35m	0.25m of mid-brown sandy silt topsoil over orange beige sandy clay natural at SE end, orange brown sands and gravels at NW end. Plough scars. No archaeology recorded.
46	50.0m x 1.8m	SW-NE	0.5-0.7m	0.25m of mid-brown sandy silt topsoil over 0.2m of grey-brown silty sand subsoil over orange beige sand and gravel natural at E end. 0.3m of topsoil over 0.3m of subsoil at W end. Multiple archaeological pits were uncovered. Three were excavated - [4603]/[4601], [4605] and [4607]. Three others - [4609], [4611] and [4613] were just recorded. The archaeology was found only in the sandier natural.
47	50.0m x 1.8m	E-W	0.5-0.9m	0.4m of fairly dark brown sandy silt topsoil directly over a grey-brown clay natural at E end. 0.5m dark brown sandy silt topsoil over 0.3m of grey-brown silty sand over mottled orange clayey sand at W end. A sondage was dug to 1.7m at E end to check nature of clay natural. No archaeology was recorded.
48	50.0m x 1.8m	E-W	0.3-0.8m	0.25m of fairly dark brown sandy silt topsoil directly over natural at the W end, 0.4m of fairly dark brown sandy silt topsoil over 0.35m of greyish brown silty sand over natural at E end. Natural was an orange-brown slightly clayey sand, with patches of grey clay close to the E end. One large pit [4801] in section of trench was excavated and recorded at W end.
49	50.0m x 1.8m	N-S	0.5-0.6m	0.4m of mid-brown sandy silt topsoil over grey-brown sandy clay natural at N end. 0.5m of topsoil at S end. No archaeology was recorded.
50	50.0m x 1.8m	SW-NE	0.25- 0.3m	0.2m of mid-brown sandy silt topsoil over an orangey-brown sandy clay natural, with sands and gravel at NE end. Plough scars. No archaeology recorded
51	50.0m x 1.8m	SW-NE	0.4m	0.3m of mid to dark brown sandy silt topsoil over orange beige sand and gravel natural, with some light beige-grey clay deposits on southern side. Nine archaeological features were recorded. Three features were excavated - pits [5103] and [5114], and linear [5117]. The rest - [5101], [5105], [5107], [5109], [5111] and [5117] were recorded but not

Trench	Size	Orientation	Depth	Description
				excavated. Possible fragments of burnt bone were recovered from (5114)[5113] and (5118)[5117].
52	50.0m x 1.8m	SW-NE	0.3-0.9m	0.4m of mid-brown sandy silt over 0.4m of slightly lighter grey brown silty sand subsoil over orangey brown sands and gravels at SW end. 0.25m of topsoil directly over natural at the NE end. No archaeology recorded.
53	50.0m x 1.8m	WSW-ENE	0.3m	0.25m of fairly dark brown sandy silt topsoil over orange-brown sand and gravel natural. No archaeology was recorded.
54	50.0m x 1.8m	WSW-ENE	0.3m	0.25m of mid-brown sandy silt topsoil over orange-brown sand and gravel natural. No archaeology recorded.
55	50.0m x 1.8m	WSW-ENE	0.3m	0.3m of mid-brown sandy silt topsoil over an orange brown, slightly clayey sand and gravel natural. No archaeology was recorded.
56	50.0m x 1.8m	SW-NE	0.25- 0.35m	0.2m of mid-brown sandy silt topsoil over mottled orange-brown clayey sand, with numerous angular stones, at NE end. 0.3m of topsoil at the SW end. No archaeology was recorded.
57	50.0m x 1.8m	SW-NE	0.3m	0.25m of mid-brown sandy silt topsoil over orange-brown slightly clayey sand natural, with numerous angular stones and slightly gravelly in parts. No archaeology was recorded.
58	50.0m x 1.8m	W-E	0.3m	0.25m of mid-brown sandy silt topsoil over orange-brown slightly clayey sand natural, with numerous angular stones and patches of gravel. No archaeology was recorded.
59	50.0m x 1.8m	NW-SE	0.3m	0.25m of mid-brown sandy silt topsoil over orange-brown, slightly clayey sand natural, with numerous angular stones and some gravel. Area of cleaner sand towards centre of trench. No archaeology was recorded.
60	47.0m x 1.8m	SW-NE	0.25m	0.2m of mid-brown sandy silt topsoil over orange-brown, slightly clayey sand natural, with numerous angular stones, some areas of gravel and bedrock visible in places. No archaeology was recorded.
61	53.0m x 1.8m	W-E	0.25m	0.2m of mid-brown sandy silt topsoil over orange-brown, slightly clayey sand natural, with numerous angular stones and some gravel. No archaeology was recorded.

APPENDIX 2: Photographic Register

Shot	Summary description of subject	Facing
	Team 2	
1-2	Access to WA1056 to the W of the public road	NW
3-6	General views of WA1056 to the E of the public road	Various
7-8	Access to WA1056 at the E end of Cormack's Hillock	N
9-10	Access to WA1058 from WA1056	E
11	Machine arrival	
12	General view of WA1056	SE
13-14	General views of WA1058	Various
15-21	General views of the access to WA1053 and the farm infrastructure within it	Various
22-25	Access to WA1026 and machine arrival	Various
26-27	Access to WA1026 opposite Deveron Coaches	SW
28-32	WA1026 pre-excavation	Various
33	WA1026, actual course of gas main	E
34	WA1026, BT cable in road verge	ESE
35-36	Access to WA1026 after machine access	NW
37-38	WA1026, view along route of gas main	W
39	WA1026, Trench 1 general view	NNW
40	WA1026, Trench 1, soil profile	ENE
41	WA1026, Trench 2 general view	SSW
42	WA1026, Trench 2 water pipe at SSW end	SSW
43	WA1026, Netlon barrier in place along gas main buffer zone	E
44	WA1026, Trench 3 general view	SW
45	WA1026, Trench 3 water pipe in mid trench	SW
46	WA1026, Trench 3 mottled and stained natural subsoil	SW
47	WA1026, Trench 3 band of sand with sandy gravel on either side at NE end	NE
48	WA1026, Trench 3 soil profile	NW
49	WA1026, Trench 4 general view	S
50	WA1026, Trench 4 variable natural subsoil	S
51	WA1026, Trench 4 clay pipe field drain	S
52	WA1026, Trench 4 soil profile	E
53	WA1026, Trench 5 general view	SW
54-55	WA1026, Trench 5 disturbed area & deeper soils in mid trench	NE
56	WA1026, Trench 5 section cleaned, no cut feature	SE
57	WA1026, Trench 6 general view	NE
58	WA1026, Trench 6 clay pipe field drain	W
59	WA1026, general site view	NE
60-61	WA1026, Trench 7 general view	SSE
62	WA1026, Trench 7 general view	NNW
63	WA1026, Trench 8 general view	ENE
64	WA1026, Trench 8 bedrock knoll in mid trench	WSW
65-68	Access to WA1019	Various
69-70	WA1026, Trench 2 water pipe repair	SSW
71	WA1026, Trench 9 possible stone hole	W
72	WA1026, Trench 9 general view	S
73	WA1026, Trench 10 general view	S
74	WA1026, Trench 10 general view	N
75	WA1026, Trench 11 general view	ENE
76	WA1026, general view of Trenches 9-11	NE
77-81	Machine cleaning following work in WA1026	Various
82-86	WA1019, pre-excavation photos	Various
87	WA1019, Trench 12 general view	NNW
88	WA1019, Trench 12 soil profile, NNW end	ENE
89	WA1019, Trench 12 plough scores	NNW
90	WA1019, Trench 12 probably natural gully	NNW

Shot	Summary description of subject	Facing
91-92	WA1019, Trench 12 gully section	N & ENE
93	WA1019, Trench 13 general view	NNE
94	WA1019, Trench 13 probably natural gully	NNE
95-96	WA1019, Trench 13 gully section	ESE
97-98	WA1019, Trench 13 variations in natural subsoil	N
99-102	WA1019, Trench 14 variations in natural subsoil	ENE & WSW
103	WA1019, Trench 14 general view	WSW
104	WA1019, Trench 16 pit 1601 pre-excavation	ENE
105-106	WA1019, Trench 16 pit 1601 pre-excavation	NNW
107	WA1019, Trench 15 general view	NW
108-110	WA1019, Trench 12 extension, general views and section through natural gully	E & W
111-114	WA1019, general site views & Trenches 12-16	Various
115-116	WA1019, Trench 15 natural feature with charcoal	E & N
117-118	WA1019, general site views	W & SW
119	WA1019, Trench 16 pit 1601 section	SW
120	WA1019, Trench 16 pit 1601 section	NW
121	WA1019, Trench 16 stones from pit 1601	
122	WA1019, Trench 16 pit 1601 post-excavation	SW
123	WA1019, Trenches 12-16 general view	SSW
124-125	WA1019, Trench 16 pit 1601 with stones replaced	SW
126	WA1019, Trenches 17-18 on knoll excavated	SSW
127	WA1019, Trench 17 general view	NNE
128	WA1019, Trench 17 soil profile at SSW end	WNW
129	WA1019, Trench 17 gravel bands with pit 1701 beyond	NNE
130	WA1019, Trench 17 pit 1701 partly exposed	NNE
131-132	WA1019, Trench 17 general view	SSW
133	WA1019, Trench 18 general view	WSW
134-135	WA1019, Trench 18 natural subsoil variation	WSW
136	WA1019, Trench 17 pit 1701 fully exposed	S
137	WA1019, Trench 17 pit 1701 fully exposed	W
138	WA1019, Trench 19 general view	NNW
139	WA1019, Trench 19 soil profile in gully	WSW
140	WA1019, Trench 19 general view	NNW
141	WA1019, Trench 19 general view	SSE
142-146	WA1019, Trench 17 pit 1701 section	S & SW
147-149	Access to WA1020 pre arrival	Various
150	WA1019, Trench 17 pit 1701 post-excavation	S
151	WA1019, Trench 17 pit 1701 post-excavation	W
152-155	Access to WA1020 pre arrival	Various
156	WA1026 area general view	SW
157	Working shot, machine loading	
158-160	Access to WA1020, condition photos	Various
161	Access to WA1020, machine below OHL	
162-167	Access to and area of WA1020, condition photos	Various
168	WA1020, Trench 20 soil profile	ESE
169-170	WA1020, Trench 20 general view	NNE
171	WA1020, Trench 22 general view	N
172	WA1020, Trench 22 soil profile S end	W
173	WA1020, Trench 22 soil profile N end	W
174	WA1020, Trench 21 general view	NNE
175	WA1020, Trenches 21-22 general view	NNE
176-177	WA1020, Trench 21 ceramic ?foul drain	NNE
178	WA1020, Trenches 20-22 and netlon barrier along water pipe buffer zone	NW
179	WA1020, Trench 23 general view	SE

Shot	Summary description of subject	Facing
180-182	WA1020, Trench 23, field boundary ditch 2301 and slot	Various
183	WA1020, Trench 24 general view	ESE
184-187	WA1020, Trench 24, flooding and broken field drains	ESE
188	WA1020, Trench 24 general view	WNW
189	WA1020, Trench 24 soil profile and field drain section	NNE
190	WA1020, Trench 25, pre-excavation shot	WNW
191	WA1020, Trench 25 general view	WNW
192	WA1020, Trench 25, soil profile at ESE end	SSW
193-194	WA1020, Trench 25 soil profile at WNW end	W & SSW
195-196	WA1020, water running into trench from field drains, trench is lower than adjacent stream	NNE
197-200	WA1020, site views from the piggery bund	SE
201-202	WA1020, backfilled Trenches 20-23	NW
203	WA1020, Trench 26 general view	WNW
204	WA1020, Trench 26 natural subsoil	WNW
205	WA1020, Trench 26 boulder drain	NE
206	WA1020, Trench 26 clay pipe drain	NE
207	WA1020, Trench 26 general view	ESE
208	WA1020, Trench 27 general view	SE
209	WA1020, Trench 27 general view	NW
210	WA1020, Trench 28 general view	NW
211	WA1020, Trench 28 natural subsoil	NW
212	WA1020, Trench 28 stony natural subsoil at NW end	ESE
213	WA1020, NW end of the area showing the probable course of the water pipe	NNW
214-218	WA1020, backfilled trenches	Various
219-224	WA1020, condition photos after completion of work	Various
	Team 1	
225	WA1056, Trench 31 general view	NE
226	WA1056, Trench 31 NW facing section at SW end	SE
227	WA1056, Trench 32 general view	E
228	WA1056, Trench 32 N facing section at E end	S
229	WA1056, Trench 32 N facing section at W end	S
230	WA1056, Trench 33 general view	SE
231	WA1056, Trench 33 NE facing section at SE end	SW
232	WA1056, Trench 33 NE facing section at NW end	SW
233	WA1056, Trench 34 general view	E
234	WA1056, Trench 34 N facing section at E end	S
235	WA1056, Trench 35 general view	NE
236	WA1056, Trench 36 general view	NE
237	WA1056, Trench 36 SE facing section at NE end	NW
238	WA1056, Trench 36 NW facing section at SW end	SE
239	WA1056, Trench 37 general view	ENE
240	WA1056, Trench 37 NNW facing section at ENE end	SSE
241	WA1056, Trench 37 NNW facing section at WSW end	SSE
242	WA1056, Trench 38 general view	E
243	WA1056, Trench 38 N facing section at E end	S
244	WA1056, Trench 38 N facing section at W end	S
245	WA1056, Trench 39 general view	E
246	WA1056, Trench 39 N facing section at E end	S
247	WA1056, Trench 39 N facing section at W end	S
248	WA1056, Trench 40 general view	NE
249	WA1056, Trench 40 NW facing section at NE end	SE
250	WA1056, Trench 40 linear feature NW facing section	SE
251	WA1056, Trench 40 linear feature general view	NW
252	WA1056, Trench 40 linear feature SE facing section	NW
253	WA1056, Trench 40 linear feature general view	NE

Shot	Summary description of subject	Facing
254	WA1056, Trench 41 general view	SW
255	WA1056, Trench 41 NW facing section at SW end	SE
256	WA1056, Trench 41 NW facing section at NE end	SE
257	WA1058, Trench 42 general view	SW
258	WA1058, Trench 42 SE facing section at NE end	NW
259	WA1056, Trench 43 general view	NE
260	WA1056, Trench 43 NW facing section at NE end	SE
261	WA1056, Trench 43 NW facing section at SW end	SE
262	WA1056, Trench 44 general view	NE
263	WA1056, Trench 44 SE facing section at NE end	NW
264	WA1056, Trench 44 SE facing section at SW end	NW
265	WA1056, Trench 45 general view	SER
266	WA1056, Trench 45 SW facing section at NW end	NE
267	WA1058, Trench 46 pit 4605 sectioned	SW
268	WA1058, Trench 46 pit 4605 sectioned	SW
269	WA1058, Trench 46 pit 4605 NE facing section	SW
270	WA1058, Trench 46 pit 4605 NE facing section	SW
271	WA1058, Trench 46 pit 4607 sectioned	SW
272	WA1058, Trench 46 pit 4607 sectioned	SW
273	WA1058, Trench 46 pit 4607 NE facing section	SW
274	WA1058, Trench 46 pit 4607 NE facing section	SW
275	WA1058, Trench 46 pit 4601 flat stones	SW
276	WA1058, Trench 46 pit 4601 flat stones	SW
277	WA1058, Trench 46 pit 4601 flat stones	SW
278	WA1058, Trench 46 pit 4601 general view of section	SW
279	WA1058, Trench 46 pit 4601 general view of section	SW
280	WA1058, Trench 46 pit 4601 general view of section	SW
281	WA1058, Trench 46 pit 4601 NE facing section	SW
282	WA1058, Trench 46 pit 4601 NE facing section	SW
283	WA1058, Trench 46 pit 4601 general view showing SW end of the trench	SW
284	WA1058, Trench 46 pit 4605 fully excavated	SW
285	WA1058, Trench 46 pit 4607 fully excavated	SW
286	WA1058, Trench 46 pit 4609 unexcavated	SE
287	WA1058, Trench 46 possible pit 4613 unexcavated	SE
288	WA1058, Trench 46 general view	NE
289	WA1058, Trench 46 SE facing section at SW end	NW
290	WA1056, Trench 47 general view	E
291	WA1056, Trench 47 N facing section at E end	S
292	WA1056, Trench 47 N facing section at W end	S
293	WA1058, Trench 48 pit 4801 general view	N
294	WA1058, Trench 48 pit 4801 S facing section western part	N
295	WA1058, Trench 48 pit 4801 S facing section eastern part	N
296	WA1058, Trench 48 general view	E
297	WA1058, Trench 49 general view	N
298	WA1058, Trench 50 general view	NE
299	WA1058, Trench 51 pit 5101 general view	SE
300	WA1058, Trench 51 pit 5103 general view	SSE
301	WA1058, Trench 51 pit 5103 NNW facing section	SSE
302	WA1058, Trench 51 pit 5105 general view	NE
303	WA1058, Trench 51 pit 5107 general view	NE
304	WA1058, Trench 51 pit 5109 general view	NE
305	WA1058, Trench 51 pit 5111 general view	SE
306	WA1058, Trench 51 pit 5113 general view	SE
307	WA1058, Trench 51 pit 5113 NW facing section	NW
308	WA1058, Trench 51 pit 5115 general view	SW
309	WA1058, Trench 51 linear 5117 general view	NW
310	WA1058, Trench 51 linear 5117 SE facing section	SE

Shot	Summary description of subject	Facing
311	WA1058, Trench 51 general view	NE
312	WA1058, Trench 52 general view	NE
313	WA1058, Trench 52 NW facing section at SW end	SE
314	WA1058, Trench 52 NW facing section at SE end	SE
315	WA1056, Trench 53 general view	ENE
316	WA1056, Trench 54 general view	ENE
317	WA1056, Trench 54 SSE facing section at WSW end	NNW
318	WA1056, Trench 55 general view	ENE
319	WA1056, Trench 55 SSE facing section at ENE end	NNW
320	WA1053, Trench 56 general view	NE
321	WA1053, Trench 57 general view	NE
322	WA1053, Trench 58 general view	E
323	WA1053, Trench 59 general view	SE
324	WA1053, Trench 60 general view	NE
325	WA1053, Trench 61 general view	E
326	General view of the evaluation area	E
327	General view of the evaluation area	E
328	WA1058, view towards the River Deveron	NE
329	WA1058, view towards the River Deveron	E

APPENDIX 3: Context Register

Context.	Fill of	Type	Description
001		Topsoil	Dark brown sandy silt
002		Subsoil	Mid to grey - brown silty sand
003		Natural	Predominantly orange sands and gravels
1601		Cut	Cut for pit
1602	1601	Fill	Mid brown-grey silty sand, loose with ash/charcoal
1701		Cut	Cut for oval pit
1702	1701	Fill	White and brown sand with abundance of charcoal
1703	1701	Fill	Mottled orange and brown fine sand
2301		Cut	Cut for field boundary ditch
2302	2301	Fill	Greenish - brown sandy silt and stones
2303		Cut	Cut for CPFD, cuts (2302)
2304	2303	Fill	Mid brown silty sand soil and small stones
4601		Cut	Cut of large pit
4602	4601	Fill	Dark grey sandy gravel
4603		Cut	Possible re-cut of pit [4601]
4604	4603	Fill	Greyish brown silty sand
4605		Cut	Cut of pit
4606	4605	Fill	Greyish brown silty sand
4607		Cut	Cut of pit
4608	4607	Fill	Greyish brown silty sand
4609		Cut	Cut of pit
4610	4609	Fill	Greyish brown silty sand
4611		Cut	Cut of small pit
4612	4611	Fill	Greyish brown silty sand
4613		Cut	Cut of small pit
4614	4613	Fill	Greyish brown silty sand
4801		Cut	Cut of large pit
4802	4803	Fill	Dark orangy-brown silty sand
5101		Cut	Cut of irregular pit
5102	5101	Fill	Dark grey silty sand
5103		Cut	Cut of oval pit
5104	5103	Fill	Dark grey silty sand
5105		Cut	Cut of sub-oval pit
5106	5105	Fill	Dark grey silty sand
5107		Cut	Cut of sub-oval pit
5108	5107	Fill	Dark grey silty sand
5109		Cut	Cut of sub-oval pit
5110	5109	Fill	Dark grey silty sand
5111		Cut	Cut of pit (shape undetermined)
5112	5111	Fill	Dark grey silty sand
5113		Cut	Cut of oval pit
5114	5113	Fill	Dark grey silty sand
5115		Cut	Cut of large irregular pit
5116	5115	Fill	Dark grey silty sand
5117		Cut	Cut of linear (pit?)
5118	5117	Fill	Dark grey silty sand

APPENDIX 4: Drawings Register

Dwg No.	Sheet No.	Scale	Plan / Section	Description/contexts
1	1	01:10	Section	Pit [1601], NE-facing section
2	1	01:20	Plan	Pit [1601], plan
3	1	01:10	Section	Pit [1701], N-facing section
4	1	01:20	Plan	Pit [1701], plan
5	2	01:10	Section	Pit [4605], NE-facing section
6	2	01:10	Plan	Pit [4605], plan
7	2	01:10	Section	Pit [4607], NE-facing section
8	2	01:10	Plan	Pit [4607], plan
9	2	01:10	Section	Pit [4601]/[4603], NE-facing section
10	2	01:20	Plan	Pit [4601]/[4603], plan
11	3	01:20	Section	Pit [4801], S-facing section
12	3	01:20	Plan	Pit [4801], plan
13	3	01:20	Section	Linear (pit?) [5117], SW facing section
14	3	01:10	Plan	Linear (pit?) [5117], plan
15	3	01:20	Section	Pit [5113], SW-facing section
16	3	01:10	Plan	Pit [5113], plan
17	3	01:10	Section	Pit [5103], NNW-facing section
18	3	01:10	Plan	Pit [5103], plan

APPENDIX 5: Samples Register

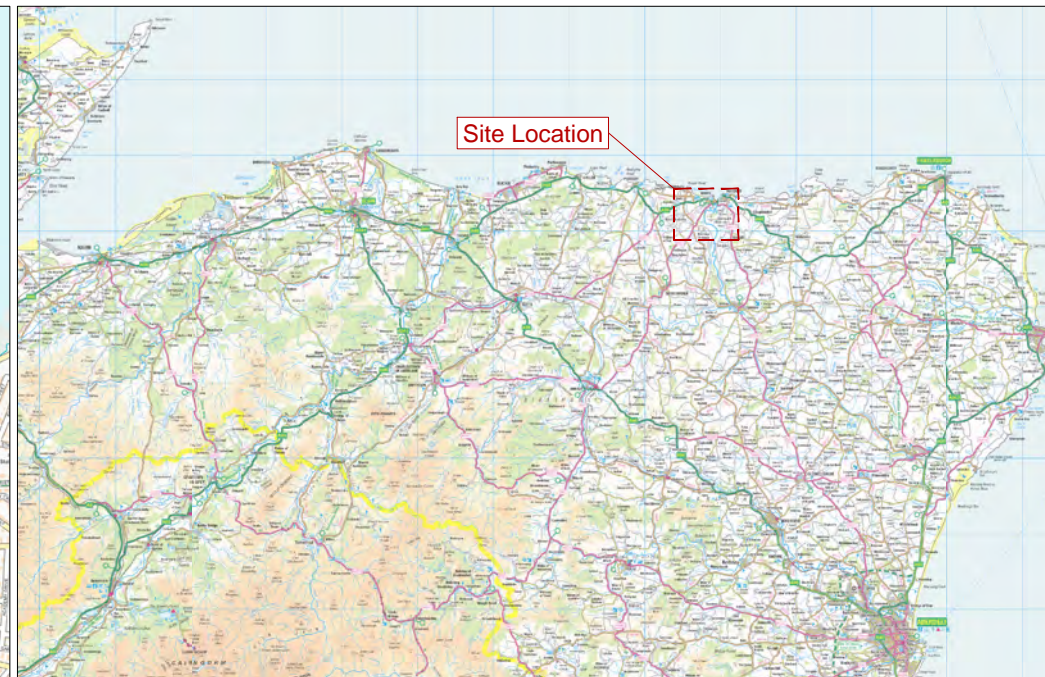
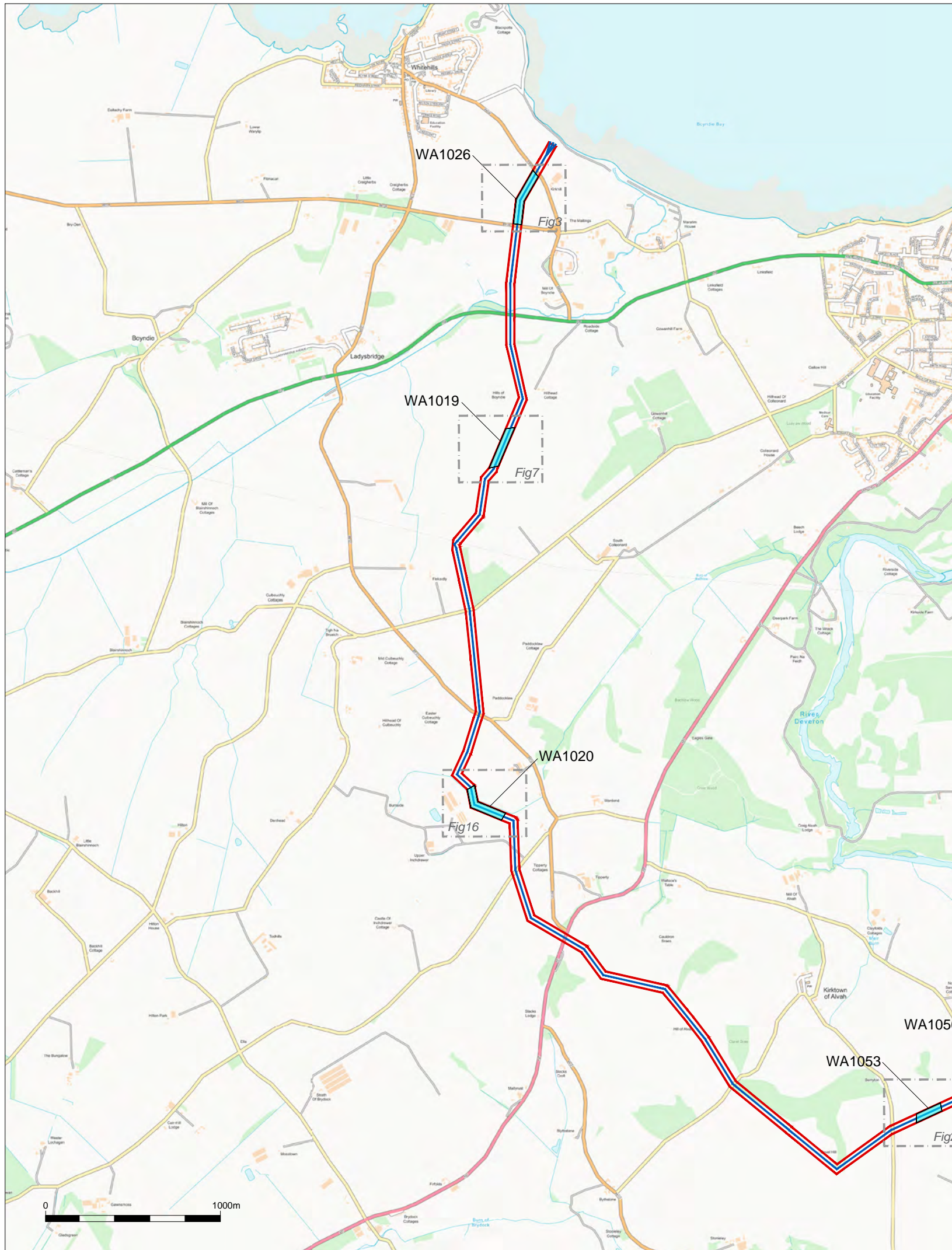
Sample No.	Context	Fill of	Sample type	Volume
1	1602	1601	Bulk	10L
2	1702	1701	Bulk	10L
3	4602	4601	Bulk	30L
4	4606	4605	Bulk	20L
5	4608	4607	Bulk	30L
6	5104	5103	Bulk	20L
7	5114	5113	Bulk	20L
8	5118	5117	Bulk	20L

APPENDIX 6: Finds Register

Context	Find type	No.	Wt (g)
4602	Stone	1	6728
5118	Burnt Bone	6	3

APPENDIX 7: Discovery and Excavation in Scotland Entry

LOCAL AUTHORITY:	Aberdeenshire
PROJECT TITLE/SITE NAME:	Moray East Offshore Wind Farm, Onshore Cable Route
PROJECT CODE:	MORF
PARISH:	Boyndie, Banff, Alvah
NAMES OF CONTRIBUTORS:	Magnus Kirby & Ian Suddaby
NAME OF ORGANISATION:	CFA Archaeology Ltd
TYPE(S) OF PROJECT:	Trial trenching evaluation
NMRS NO(S):	NJ66SE0104, NJ66SE0078, NJ66SE0003 NJ65NE0027, NJ65NE0019 and NJ65NE0040
SITE/MONUMENT TYPE(S):	Cropmarks of prehistoric settlement and enclosure, cropmarks of prehistoric burials, and cropmarks of uncertain date
SIGNIFICANT FINDS:	Pits of probable prehistoric date
NGR (2 letters, 8 or 10 figures)	NJ 6631 6460, NJ 6613 6334, NJ 6585 6119, NJ 6850 5950, NJ 6886 5965 and NJ 6911 5977
START DATE (this season)	November 2018
END DATE (this season)	November 2018
PREVIOUS WORK (incl. DES ref.)	N/A
MAIN (NARRATIVE) DESCRIPTION:	<p>An archaeological trial trenching evaluation (7%) was undertaken by CFA Archaeology Ltd in November 2018 within six cropmark sites (HER nos. NJ66SE0104, NJ66SE0078, NJ66SE0003 NJ65NE0027, NJ65NE0019 and NJ65NE0040) which lay within the corridor for the cable route which will link the Moray East Offshore Wind Farm to the Moray East Substation (situated to the west and south of Banff). These cropmarks were recorded as prehistoric settlement and enclosure (NJ66SE0104, NJ66SE0003, NJ65NE0019 and NJ65NE0040) prehistoric burials (NJ66SE0078), and cropmarks of uncertain date (NJ65NE0027).</p> <p>A group of sixteen pits identified within cropmark site NJ65NE0040 (Trenches 46, 48 and 51) is thought to be prehistoric in date. A linear feature identified within cropmark NJ66SE0003 (Trench 23) is a field boundary relating to 19th century agricultural improvements. Two isolated pits identified within cropmark site NJ66SE0078 (Trenches 16 and 17) are of unknown date and function. No other features, finds or deposits of archaeological significance were recorded.</p>
PROPOSED FUTURE WORK:	-
CAPTION(S) FOR ILLUSTRS:	N/A
SPONSOR OR FUNDING BODY:	Moray Offshore Windfarm (East) Limited
ADDRESS OF MAIN CONTRIBUTOR:	CFA Archaeology Ltd, Old Engine House, Eskmills Park, Musselburgh, EH21 7PQ
EMAIL ADDRESS:	cfa@cfa-archaeology.co.uk
ARCHIVE LOCATION (intended/deposited)	National Record of the Historic Environment and Aberdeenshire Council SMR



Key:

- Site location
- Site boundary
- Proposed cable route
- Evaluation area



Reproduced with the permission of Ordnance Survey on behalf of The Controller of Her Majesty's Stationery Office, © Crown copyright. CFA Archaeology Ltd, Old Engine House, Eskmills Park, Musselburgh EH21 7PQ AL100034785

	CFA ARCHAEOLOGY LTD The Old Engine House Eskmills Park Musselburgh East Lothian, EH21 7PQ
	T: 0131 273 4380 F: 0131 273 4381 info@cfa-archaeology.co.uk www.cfa-archaeology.co.uk

Title:
Location map showing the areas where evaluation took place

Project:
Moray Offshore Windfarm (East) Ltd, Onshore Cable Route, Cropmark Sites to the West & South of Banff, Aberdeenshire

Client:
Moray Offshore Windfarm (East) Ltd

Scale at A3:
1:25000

Drawn by: CA	Checked by: SW	Date: 29/11/2018
-----------------	-------------------	---------------------

Report No: 3800	Fig. No: 1
--------------------	---------------



Fig. 2 - General view of area WA1026 from the North

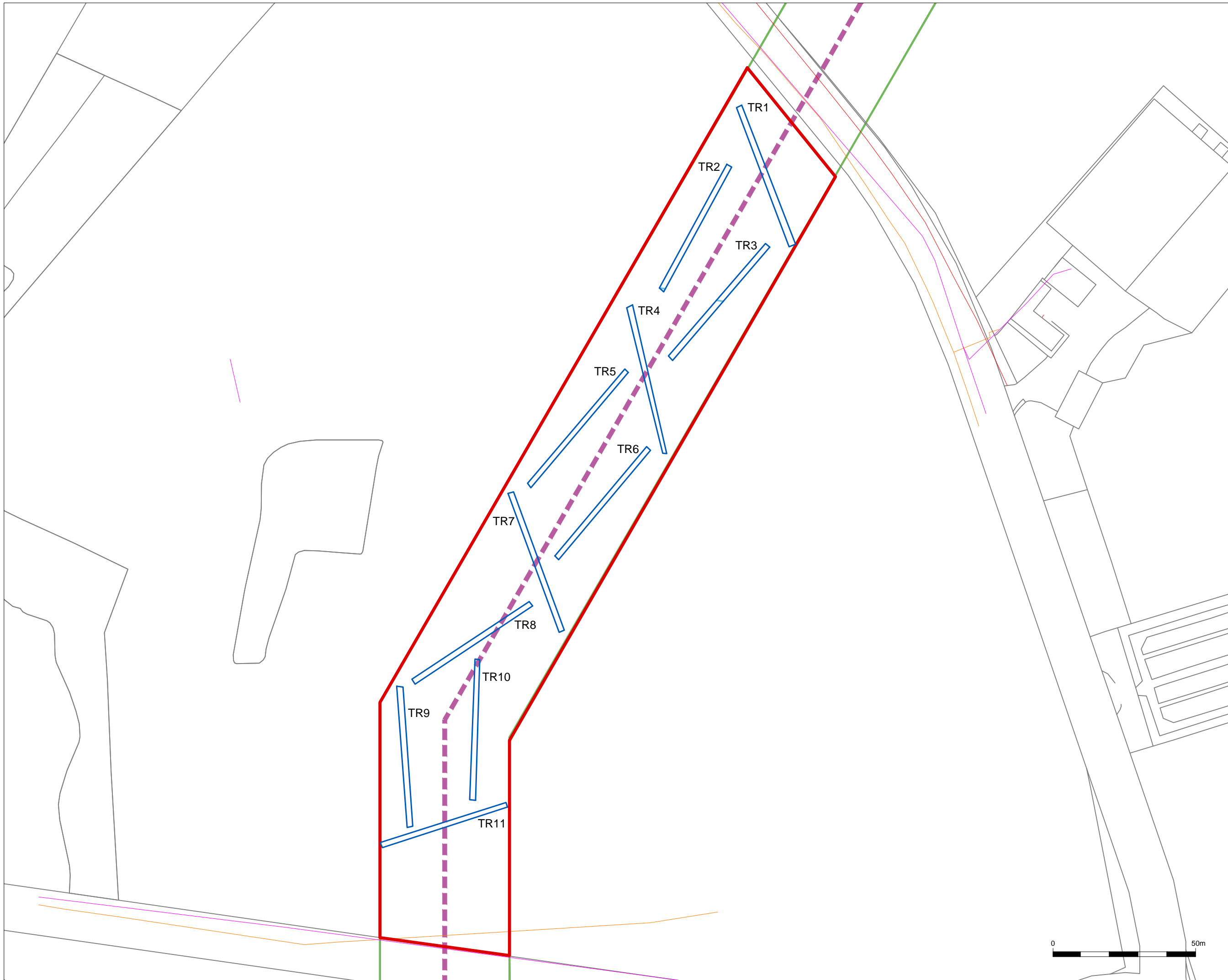
Project:
 Moray Offshore Windfarm (East) Ltd, Onshore Cable Route. Cropmark Sites to the West & South of Banff, Aberdeenshire



CFA ARCHAEOLOGY LTD
 The Old Engine House
 Eskmills Park
 Musselburgh
 East Lothian, EH21 7PQ
 T: 0131 273 4380
 F: 0131 273 4381
 info@cfa-archaeology.co.uk
 www.cfa-archaeology.co.uk

Client:
 Moray Offshore Windfarm (East) Ltd

Drawn by: CA	Checked: SW	Date: 04/02/19
Report No: 3800		Fig. No: 2



- Key:**
- Evaluation area
 - Trench location
 - Water pipe
 - Cable location
 - Wayleave boundary
 - Utility - BT
 - Utility - Scotland Gas Networks
 - Utility - Scottish Hydro Electricity



Reproduced with the permission of Ordnance Survey on behalf of The Controller of Her Majesty's Stationery Office, © Crown copyright. CFA Archaeology Ltd, Old Engine House, Eskmills Park, Musselburgh EH21 7PQ AL100034785

	CFA ARCHAEOLOGY LTD The Old Engine House Eskmills Park Musselburgh East Lothian, EH21 7PQ
	T: 0131 273 4380 F: 0131 273 4381 info@cfa-archaeology.co.uk www.cfa-archaeology.co.uk

Title:
Plan of Trenches 1-11 in area WA1026

Project:
Moray Offshore Windfarm (East) Ltd, Onshore Cable Route. Cropmark Sites to the West & South of Banff, Aberdeenshire

Client:
Moray Offshore Windfarm (East) Ltd

Scale at A3:
1:1200

Drawn by: CA	Checked by: SW	Date: 29/11/2018
------------------------	--------------------------	----------------------------

Report.No: 3800	Fig. No: 3
---------------------------	----------------------





Fig. 4 - Trench 3 from the NE, general view showing the variable natural subsoil



Fig. 5 - Trench 7 from the NNW, surface bedrock

Project:
Moray Offshore Windfarm (East) Ltd, Onshore Cable Route. Cropmark Sites to the West & South of Banff, Aberdeenshire



CFA ARCHAEOLOGY LTD
The Old Engine House
Eskmills Park
Musselburgh
East Lothian, EH21 7PQ
T: 0131 273 4380
F: 0131 273 4381
info@cfa-archaeology.co.uk
www.cfa-archaeology.co.uk

Client:
Moray Offshore Windfarm (East) Ltd

Drawn by: CA	Checked: SW	Date: 04/02/19
Report No: 3800		Fig. No: 4-5



Fig. 6 - General view of area WA1019 from the North. The archaeological features were on the terrace and knoll to the left of the nearest trench

Project:
Moray Offshore Windfarm (East) Ltd, Onshore Cable Route. Cropmark Sites to the West & South of Banff, Aberdeenshire



CFA ARCHAEOLOGY LTD
The Old Engine House
Eskmills Park
Musselburgh
East Lothian, EH21 7PQ
T: 0131 273 4380
F: 0131 273 4381
info@cfa-archaeology.co.uk
www.cfa-archaeology.co.uk

Client:
Moray Offshore Windfarm (East) Ltd

Drawn by: CA	Checked: SW	Date: 04/02/19
Report No: 3800		Fig. No: 6



Key:

- Evaluation area
- Trench location
- Archaeological feature
- Cable location
- Wayleave boundary



Reproduced with the permission of Ordnance Survey on behalf of The Controller of Her Majesty's Stationery Office, © Crown copyright. CFA Archaeology Ltd, Old Engine House, Eskmills Park, Musselburgh EH21 7PQ AL100034785

	CFA ARCHAEOLOGY LTD
	The Old Engine House
	Eskmills Park
	Musselburgh
	East Lothian, EH21 7PQ
T: 0131 273 4380	
F: 0131 273 4381	
info@cfa-archaeology.co.uk	
www.cfa-archaeology.co.uk	

Title:
Plan of Trenches 12-19 in area WA1019

Project:
Moray Offshore Windfarm (East) Ltd, Onshore Cable Route. Cropmark Sites to the West & South of Banff, Aberdeenshire

Client:
Moray Offshore Windfarm (East) Ltd

Scale at A3:
1:1200

Drawn by: CA	Checked by: SW	Date: 29/11/2018
------------------------	--------------------------	----------------------------

Report No: 3800	Fig. No: 7
---------------------------	----------------------





Fig. 8 - Trench 13, view of the variable natural subsoil, with patches of soft sand and patches of chemically stained silty sand



Fig. 9 - Trench 14, detail view of the natural subsoil with patches of gravel and circles of sand, a linear band of sand and patches of firm silty sand

Project:
Moray Offshore Windfarm (East) Ltd, Onshore Cable Route. Cropmark Sites to the West & South of Banff, Aberdeenshire



CFA ARCHAEOLOGY LTD
The Old Engine House
Eskmills Park
Musselburgh
East Lothian, EH21 7PQ
T: 0131 273 4380
F: 0131 273 4381
info@cfa-archaeology.co.uk
www.cfa-archaeology.co.uk

Client:
Moray Offshore Windfarm (East) Ltd

Drawn by: CA	Checked: SW	Date: 04/02/19
Report No: 3800		Fig. No: 8-9



Fig. 10 - Trench 16, pit 1601 pre-excitation from the SSE



Fig. 11 - Trench 16, pit 1601 NE facing section

Project:
Moray Offshore Windfarm (East) Ltd, Onshore Cable Route. Cropmark Sites to the West & South of Banff, Aberdeenshire



CFA ARCHAEOLOGY LTD
The Old Engine House
Eskmills Park
Musselburgh
East Lothian, EH21 7PQ
T: 0131 273 4380
F: 0131 273 4381
info@cfa-archaeology.co.uk
www.cfa-archaeology.co.uk

Client:
Moray Offshore Windfarm (East) Ltd

Drawn by: CA	Checked: SW	Date: 04/02/19
Report No: 3800		Fig. No: 10-11



Fig. 12 - Trench 16, pit 1601 post-ex with the excavated stones replaced in the pit



Fig. 13 - Trench 17, pit 1701 pre-excitation from the E

Project:
Moray Offshore Windfarm (East) Ltd, Onshore Cable Route. Cropmark Sites to the West & South of Banff, Aberdeenshire



CFA ARCHAEOLOGY LTD
The Old Engine House
Eskmills Park
Musselburgh
East Lothian, EH21 7PQ
T: 0131 273 4380
F: 0131 273 4381
info@cfa-archaeology.co.uk
www.cfa-archaeology.co.uk

Client:
Moray Offshore Windfarm (East) Ltd

Drawn by: CA	Checked: SW	Date: 04/02/19
Report No: 3800		Fig. No: 12-13



Fig. 14 - Trench 17, pit 1701 North facing section



Fig. 15 - General view of area WA1020 from the NW

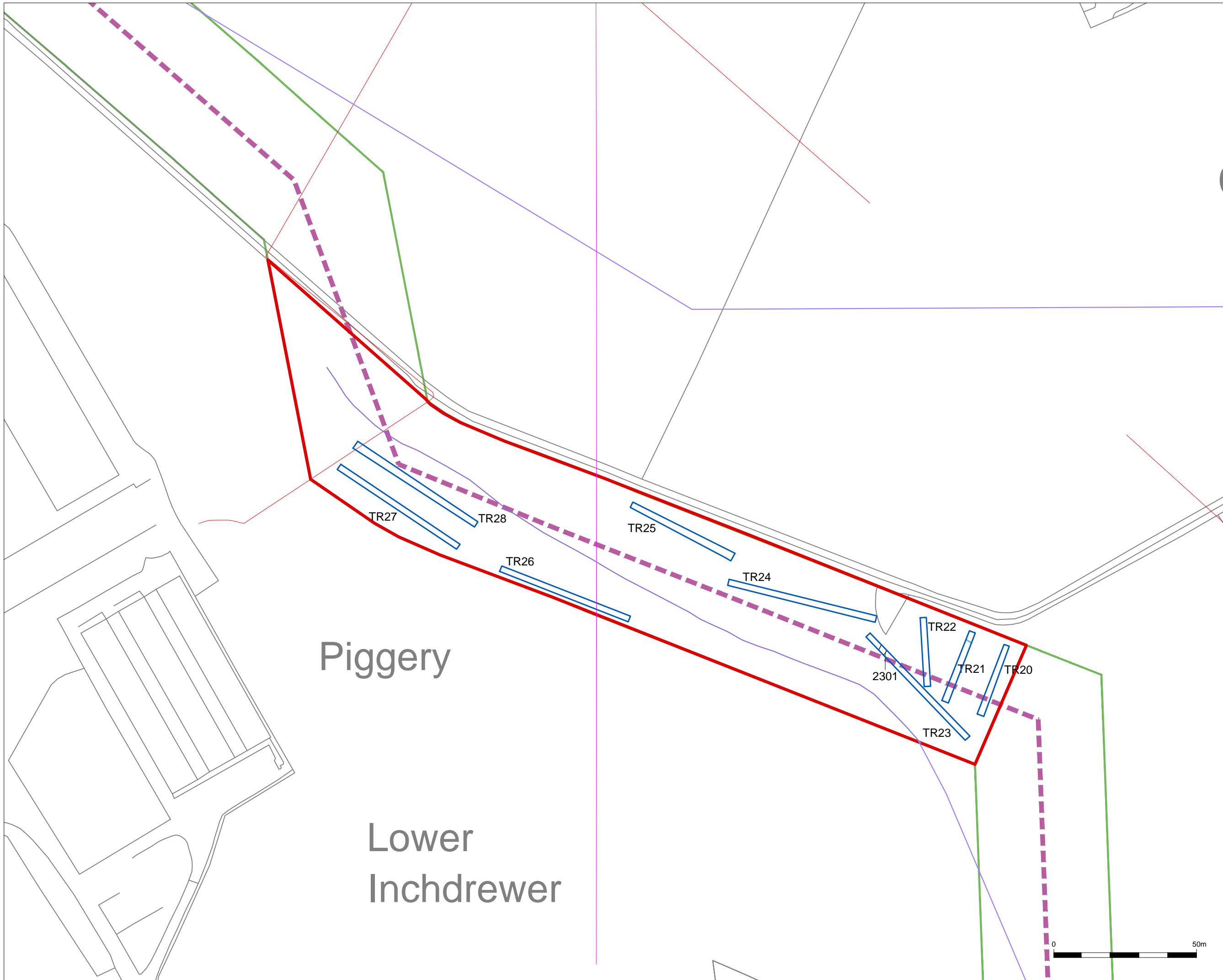
Project:
Moray Offshore Windfarm (East) Ltd, Onshore Cable Route. Cropmark Sites to the West & South of Banff, Aberdeenshire



CFA ARCHAEOLOGY LTD
The Old Engine House
Eskmills Park
Musselburgh
East Lothian, EH21 7PQ
T: 0131 273 4380
F: 0131 273 4381
info@cfa-archaeology.co.uk
www.cfa-archaeology.co.uk

Client:
Moray Offshore Windfarm (East) Ltd

Drawn by: CA	Checked: SW	Date: 04/02/19
Report No: 3800		Fig. No: 14-15



- Key:**
- Evaluation area
 - Trench location
 - Archaeological feature
 - Water pipe
 - Cable location
 - Wayleave boundary
 - Surveyed water main
 - Water main
 - Utility - BT
 - Utility - Scottish Hydro Electricity



Reproduced with the permission of Ordnance Survey on behalf of The Controller of Her Majesty's Stationery Office, © Crown copyright. CFA Archaeology Ltd, Old Engine House, Eskmills Park, Musselburgh EH21 7PQ AL100034785

	CFA ARCHAEOLOGY LTD The Old Engine House Eskmills Park Musselburgh East Lothian, EH21 7PQ
	T: 0131 273 4380 F: 0131 273 4381 info@cfa-archaeology.co.uk www.cfa-archaeology.co.uk

Title:
Plan of Trenches 20-28 in area WA1020

Project:
Moray Offshore Windfarm (East) Ltd, Onshore Cable Route. Cropmark Sites to the West & South of Banff, Aberdeenshire

Client:
Moray Offshore Windfarm (East) Ltd

Scale at A3:
1:1200

Drawn by: CA	Checked by: SW	Date: 29/11/2018
------------------------	--------------------------	----------------------------

Report No: 3800	Fig. No: 16
---------------------------	-----------------------



Fig. 17 - Trench 24 general view from the WNW



Fig. 18 - Trench 27 general view from the NW

Project:
Moray Offshore Windfarm (East) Ltd, Onshore Cable Route. Cropmark Sites to the West & South of Banff, Aberdeenshire



CFA ARCHAEOLOGY LTD
The Old Engine House
Eskmills Park
Musselburgh
East Lothian, EH21 7PQ
T: 0131 273 4380
F: 0131 273 4381
info@cfa-archaeology.co.uk
www.cfa-archaeology.co.uk

Client:
Moray Offshore Windfarm (East) Ltd

Drawn by: CA	Checked: SW	Date: 04/02/19
Report No: 3800		Fig. No: 17-18



Fig. 19 - Trench 23, ditch 2301 from the West



Fig. 20 - Trench 23, ditch 2301 from the South

Project:
Moray Offshore Windfarm (East) Ltd, Onshore Cable Route. Cropmark Sites to the West & South of Banff, Aberdeenshire



CFA ARCHAEOLOGY LTD
The Old Engine House
Eskmills Park
Musselburgh
East Lothian, EH21 7PQ
T: 0131 273 4380
F: 0131 273 4381
info@cfa-archaeology.co.uk
www.cfa-archaeology.co.uk

Client:
Moray Offshore Windfarm (East) Ltd

Drawn by: CA	Checked: SW	Date: 04/02/19
Report No: 3800		Fig. No: 19-20



Fig. 21 - General view of area WA1053 from the ENE

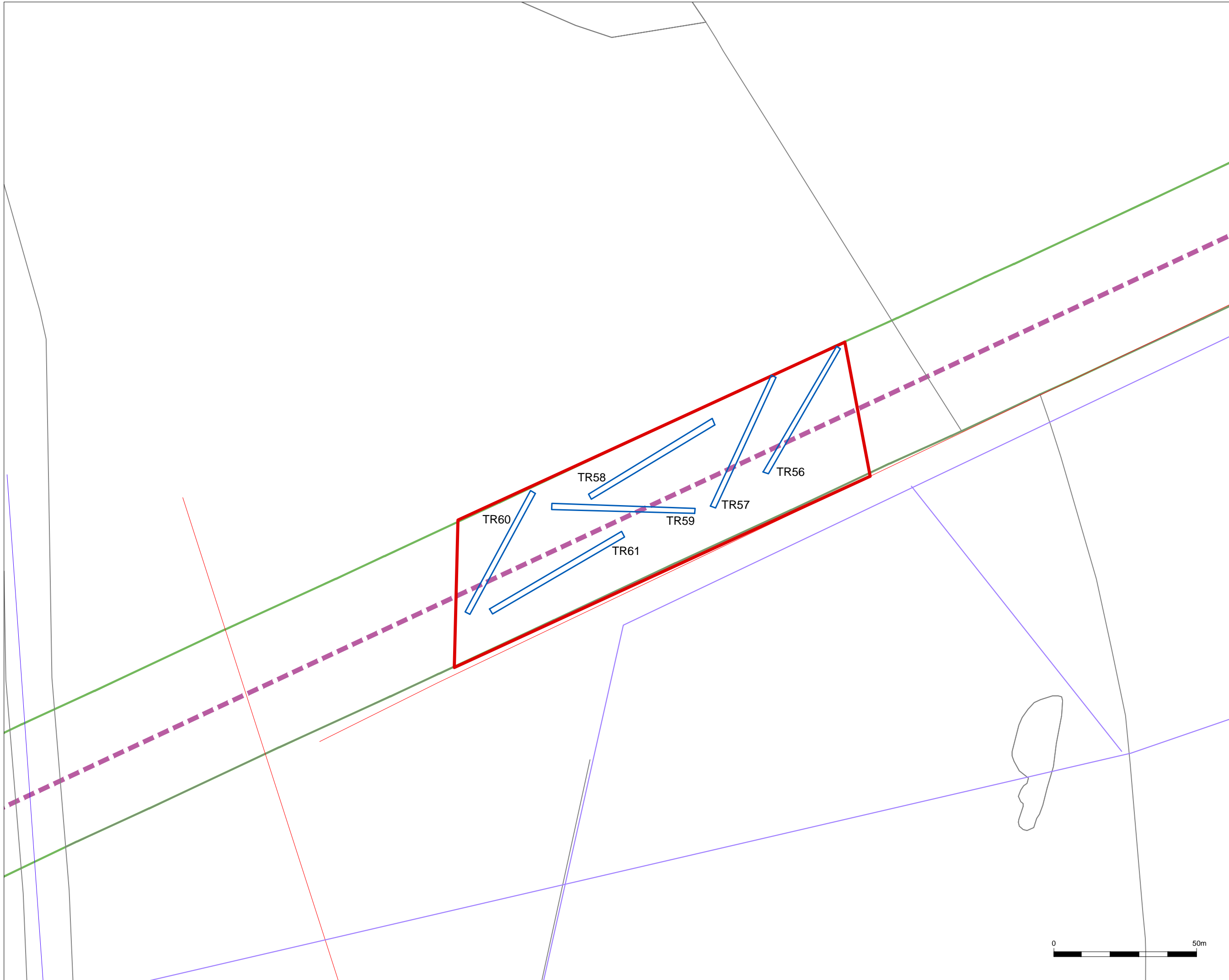
Project:
 Moray Offshore Windfarm (East) Ltd, Onshore Cable Route. Cropmark Sites to the West & South of Banff, Aberdeenshire



CFA ARCHAEOLOGY LTD
 The Old Engine House
 Eskmills Park
 Musselburgh
 East Lothian, EH21 7PQ
 T: 0131 273 4380
 F: 0131 273 4381
 info@cfa-archaeology.co.uk
 www.cfa-archaeology.co.uk

Client:
 Moray Offshore Windfarm (East) Ltd

Drawn by: CA	Checked: SW	Date: 04/02/19
Report No: 3800		Fig. No: 21



- Key:**
- Evaluation area
 - Trench location
 - Cable location
 - Wayleave boundary
 - Water main
 - Utility - Scottish Hydro Electricity
 - Utility - Scottish Water

Reproduced with the permission of Ordnance Survey on behalf of The Controller of Her Majesty's Stationery Office, © Crown copyright. CFA Archaeology Ltd, Old Engine House, Eskmills Park, Musselburgh EH21 7PQ AL100034785

	CFA ARCHAEOLOGY LTD The Old Engine House Eskmills Park Musselburgh East Lothian, EH21 7PQ
	T: 0131 273 4380 F: 0131 273 4381 info@cfa-archaeology.co.uk www.cfa-archaeology.co.uk

Title:
 Plan of Trenches 56-61 in area WA1053

Project:
 Moray Offshore Windfarm (East) Ltd, Onshore Cable Route. Cropmark Sites to the West & South of Banff, Aberdeenshire

Client:
 Moray Offshore Windfarm (East) Ltd

Scale at A3:
 1:1200

Drawn by: CA	Checked by: SW	Date: 29/11/2018
-----------------	-------------------	---------------------

Report No: 3800	Fig. No: 22
--------------------	----------------





Fig. 23 - Trench 57, general view from the SW



Fig. 24 - General view of area WA1056 from area WA1053. The wooded Cormack's Hillock is in the centre of the photo

Project:
Moray Offshore Windfarm (East) Ltd, Onshore Cable Route. Cropmark Sites to the West & South of Banff, Aberdeenshire



CFA ARCHAEOLOGY LTD
The Old Engine House
Eskmills Park
Musselburgh
East Lothian, EH21 7PQ
T: 0131 273 4380
F: 0131 273 4381
info@cfa-archaeology.co.uk
www.cfa-archaeology.co.uk

Client:
Moray Offshore Windfarm (East) Ltd

Drawn by: CA	Checked: SW	Date: 04/02/19
Report No: 3800		Fig. No: 23-24



Fig. 25 - General view of area WA1056 and Cormack's Hillock to the East of the public road

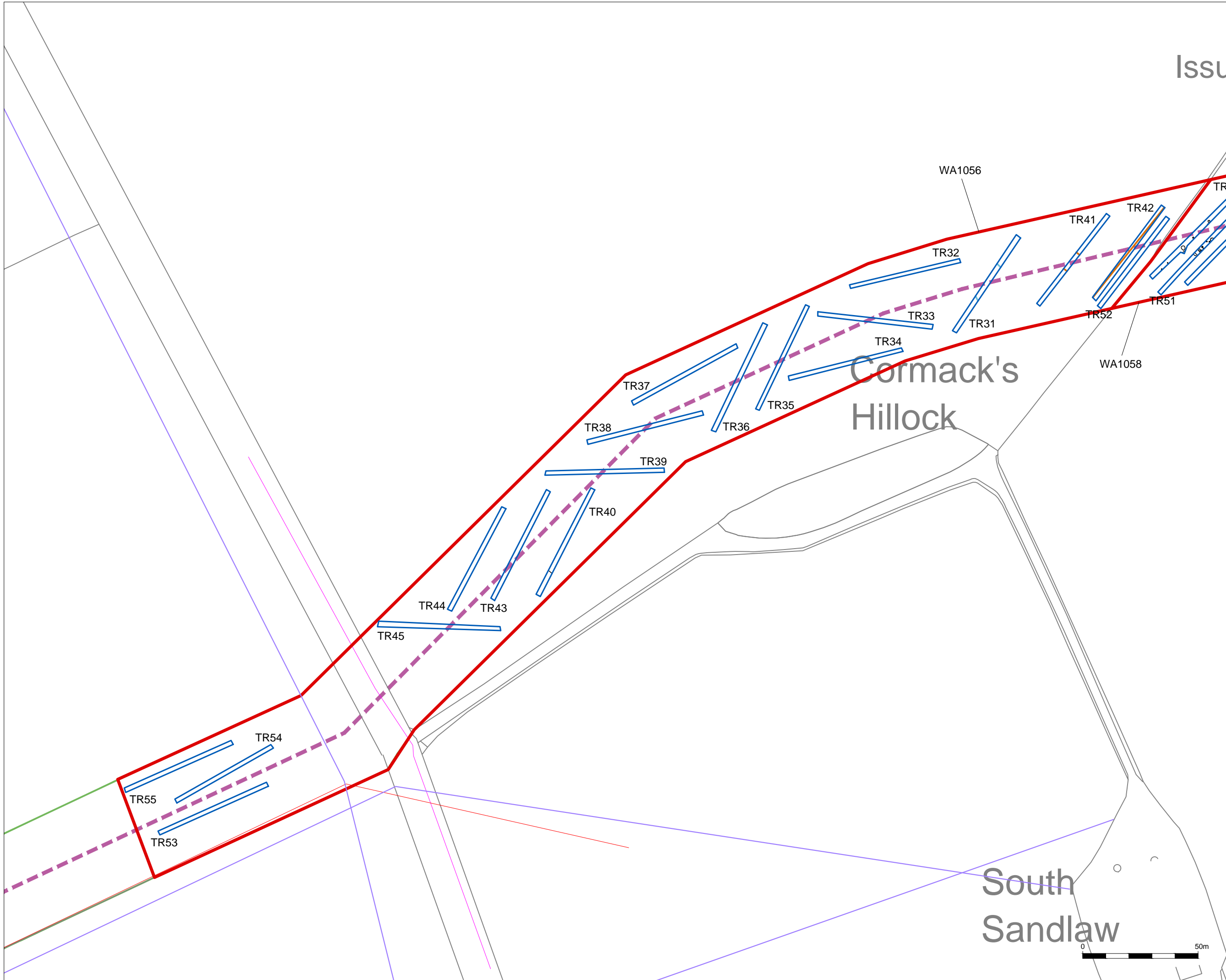
Project:
 Moray Offshore Windfarm (East) Ltd, Onshore Cable Route. Cropmark Sites to the West & South of Banff, Aberdeenshire



CFA ARCHAEOLOGY LTD
 The Old Engine House
 Eskmills Park
 Musselburgh
 East Lothian, EH21 7PQ
 T: 0131 273 4380
 F: 0131 273 4381
 info@cfa-archaeology.co.uk
 www.cfa-archaeology.co.uk

Client:
 Moray Offshore Windfarm (East) Ltd

Drawn by: CA	Checked: SW	Date: 04/02/19
Report No: 3800		Fig. No: 25



Issue

- Key:**
- Evaluation area
 - Trench location
 - Archaeological feature
 - Water pipe
 - Field drain
 - Cable location
 - Wayleave boundary
 - Water main
 - Utility - BT
 - Utility - Scottish Hydro Electricity



Cormack's
Hillock

South
Sandlaw

Reproduced with the permission of Ordnance Survey on behalf of The Controller of Her Majesty's Stationery Office, © Crown copyright. CFA Archaeology Ltd, Old Engine House, Eskmills Park, Musselburgh EH21 7PQ AL100034785

CFA
ARCHAEOLOGY LTD

CFA ARCHAEOLOGY LTD
The Old Engine House
Eskmills Park
Musselburgh
East Lothian, EH21 7PQ
T: 0131 273 4380
F: 0131 273 4381
info@cfa-archaeology.co.uk
www.cfa-archaeology.co.uk

Title:
Plan of Trenches 31-45 in area WA1056

Project:
Moray Offshore Windfarm (East) Ltd, Onshore Cable Route, Cropmark Sites to the West & South of Banff, Aberdeenshire

Client:
Moray Offshore Windfarm (East) Ltd

Scale at A3:
1:1500

Drawn by: CA	Checked: SW	Date: 29/11/2018
-----------------	----------------	---------------------

Report No: 3800	Fig. No: 26
--------------------	----------------





Fig. 27 - Trench 36, general view from the SW showing the variable natural subsoil



Fig. 28 - Trench 40, general view from the SW showing the variable natural subsoil

Project:
Moray Offshore Windfarm (East) Ltd, Onshore Cable Route. Cropmark Sites to the West & South of Banff, Aberdeenshire



CFA ARCHAEOLOGY LTD
The Old Engine House
Eskmills Park
Musselburgh
East Lothian, EH21 7PQ
T: 0131 273 4380
F: 0131 273 4381
info@cfa-archaeology.co.uk
www.cfa-archaeology.co.uk

Client:
Moray Offshore Windfarm (East) Ltd

Drawn by: CA	Checked: SW	Date: 04/02/19
Report No: 3800		Fig. No: 27-28



Fig. 29 - Trench 40, linear feature sectioned from the SE, this is probably not archaeological



Fig. 30 - General view of area WA1058 from the East. The archaeological features were located on the edge of the terrace at the top of the scarp

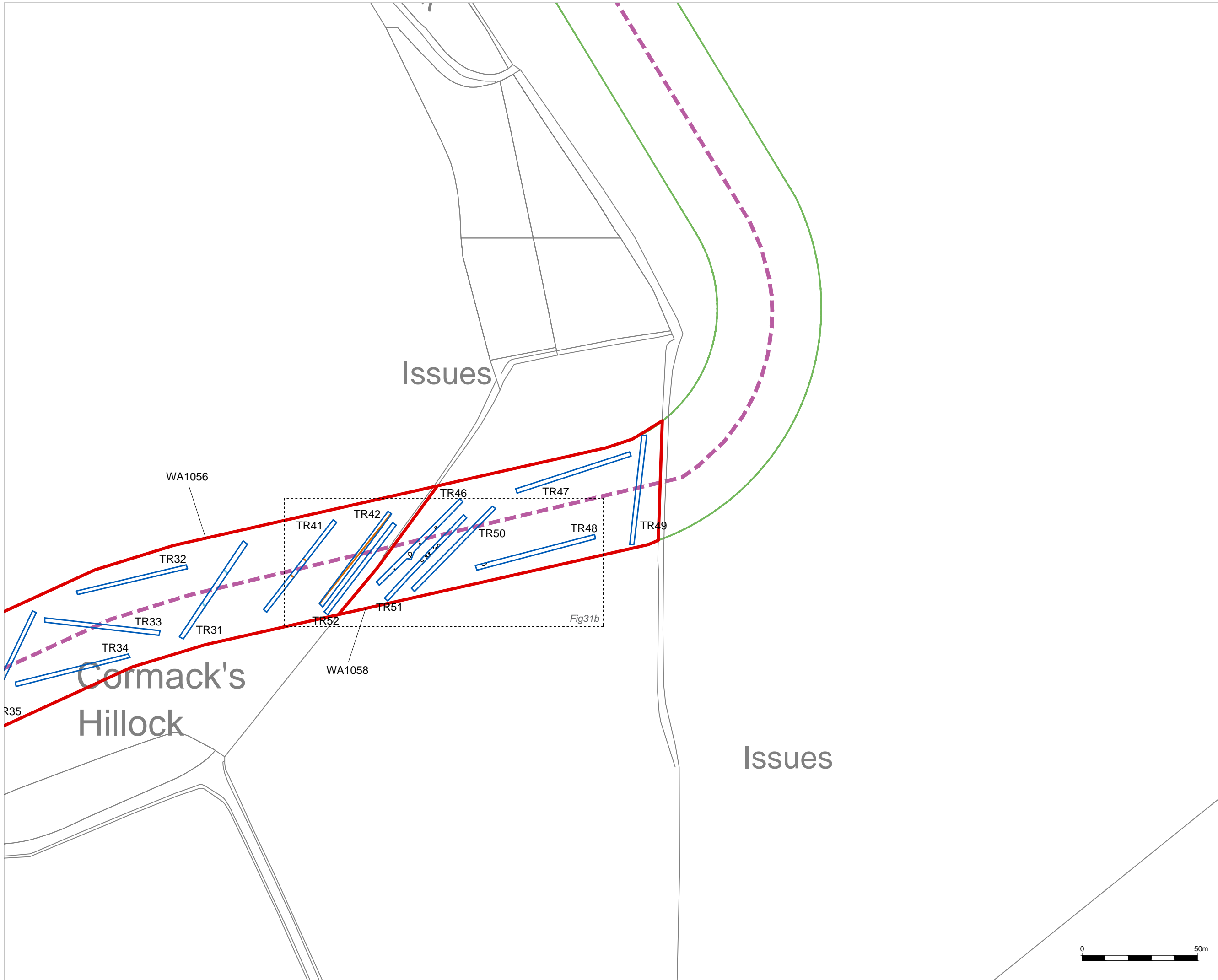
Project:
Moray Offshore Windfarm (East) Ltd, Onshore Cable Route. Cropmark Sites to the West & South of Banff, Aberdeenshire



CFA ARCHAEOLOGY LTD
The Old Engine House
Eskmills Park
Musselburgh
East Lothian, EH21 7PQ
T: 0131 273 4380
F: 0131 273 4381
info@cfa-archaeology.co.uk
www.cfa-archaeology.co.uk

Client:
Moray Offshore Windfarm (East) Ltd

Drawn by: CA	Checked: SW	Date: 04/02/19
Report No: 3800		Fig. No: 29-30



Key:

- Evaluation area
- Trench location
- Archaeological feature
- Water pipe
- Field drain
- Cable location
- Wayleave boundary



Reproduced with the permission of Ordnance Survey on behalf of The Controller of Her Majesty's Stationery Office, © Crown copyright. CFA Archaeology Ltd, Old Engine House, Eskmills Park, Musselburgh EH21 7PQ AL100034785

CFA
ARCHAEOLOGY LTD

CFA ARCHAEOLOGY LTD
The Old Engine House
Eskmills Park
Musselburgh
East Lothian, EH21 7PQ
T: 0131 273 4380
F: 0131 273 4381
info@cfa-archaeology.co.uk
www.cfa-archaeology.co.uk

Title:
Plan of Trenches 31-33, 41, 42 & 46-51 in area WA1058

Project:
Moray Offshore Windfarm (East) Ltd, Onshore Cable Route. Cropmark Sites to the West & South of Banff, Aberdeenshire

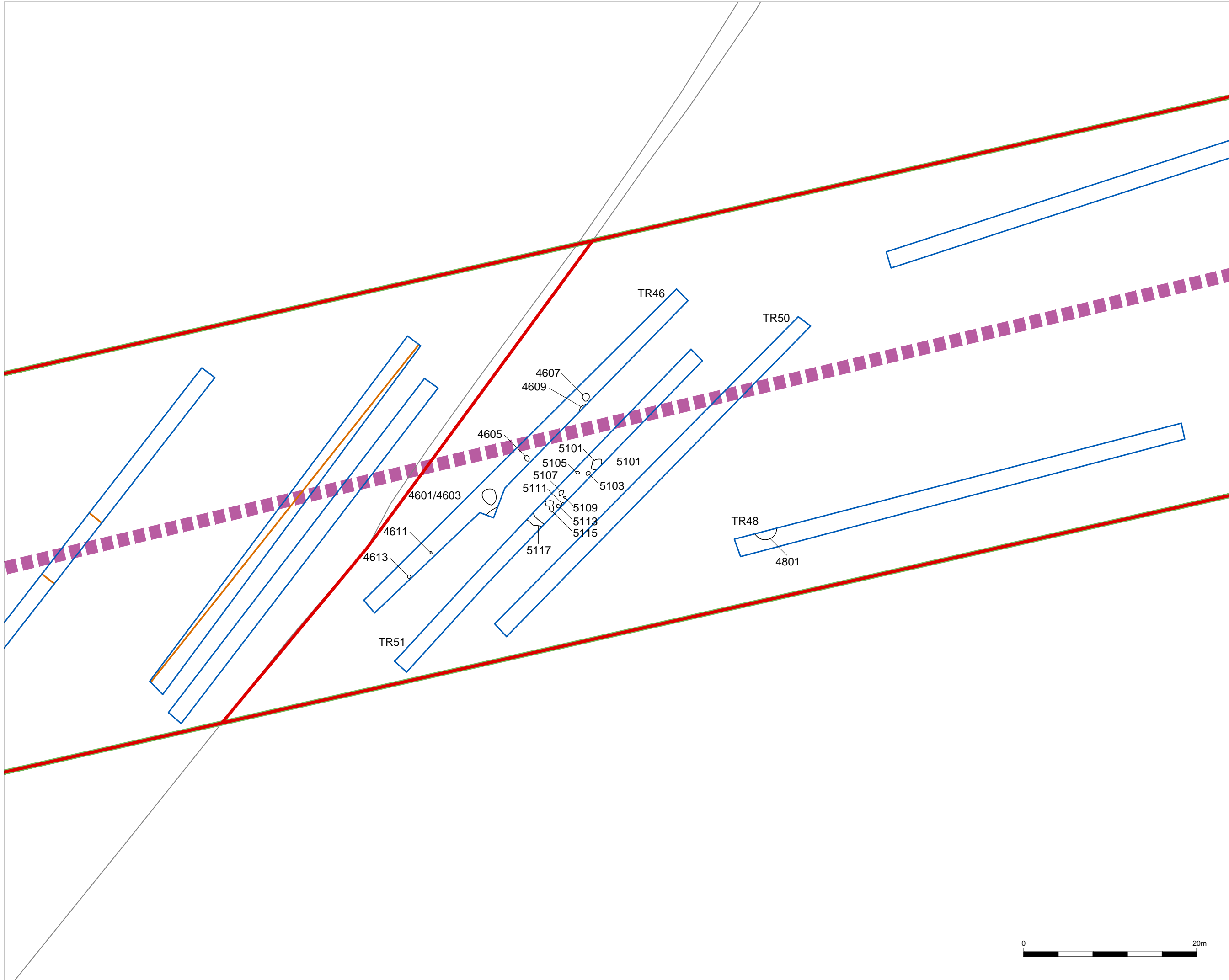
Client:
Moray Offshore Windfarm (East) Ltd

Scale at A3:
1:1500

Drawn by: CA	Checked by: SW	Date: 04/02/2019
------------------------	--------------------------	----------------------------

Report.No: 3800	Fig. No: 31a
---------------------------	------------------------





Key:

- Evaluation area
- Trench location
- Archaeological feature
- Water pipe
- Field drain
- Cable location
- Wayleave boundary



Reproduced with the permission of Ordnance Survey on behalf of The Controller of Her Majesty's Stationery Office, © Crown copyright. CFA Archaeology Ltd, Old Engine House, Eskmills Park, Musselburgh EH21 7PQ AL100034785

CFA
ARCHAEOLOGY LTD

CFA ARCHAEOLOGY LTD
The Old Engine House
Eskmills Park
Musselburgh
East Lothian, EH21 7PQ
T: 0131 273 4380
F: 0131 273 4381
info@cfa-archaeology.co.uk
www.cfa-archaeology.co.uk

Title:
**Plan of Trenches 46, 48, 50 & 51
in area WA1058**

Project:
**Moray Offshore Windfarm (East)
Ltd, Onshore Cable Route.
Cropmark Sites to the West &
South of Banff, Aberdeenshire**

Client:
**Moray Offshore Windfarm
(East) Ltd**

Scale at A3:
1:400

Drawn by: CA	Checked: SW	Date: 04/02/2019
------------------------	-----------------------	----------------------------

Report.No: 3800	Fig. No: 31b
---------------------------	------------------------





Fig. 32 - Trench 46 general view from the SW



Fig. 33 - Trench 46, pit 4601 showing possible re-cut 4603

Project:
Moray Offshore Windfarm (East) Ltd, Onshore Cable Route. Cropmark Sites to the West & South of Banff, Aberdeenshire



CFA ARCHAEOLOGY LTD
The Old Engine House
Eskmills Park
Musselburgh
East Lothian, EH21 7PQ
T: 0131 273 4380
F: 0131 273 4381
info@cfa-archaeology.co.uk
www.cfa-archaeology.co.uk

Client:
Moray Offshore Windfarm (East) Ltd

Drawn by: CA	Checked: SW	Date: 04/02/19
Report No: 3800		Fig. No: 32-33



Fig. 34 - Trench 46, pit 4605 NE facing section



Fig. 35 - Trench 46, pit 4607 NE facing section

Project:
Moray Offshore Windfarm (East) Ltd, Onshore Cable Route. Cropmark Sites to the West & South of Banff, Aberdeenshire



CFA ARCHAEOLOGY LTD
The Old Engine House
Eskmills Park
Musselburgh
East Lothian, EH21 7PQ
T: 0131 273 4380
F: 0131 273 4381
info@cfa-archaeology.co.uk
www.cfa-archaeology.co.uk

Client:
Moray Offshore Windfarm (East) Ltd

Drawn by: CA	Checked: SW	Date: 04/02/19
Report No: 3800		Fig. No: 34-35



Fig. 36 - Trench 46, possible pit 4609 in the trench edge from the NW



Fig. 37 - Trench 48 and pit 4801 from the West

Project:
Moray Offshore Windfarm (East) Ltd, Onshore Cable Route. Cropmark Sites to the West & South of Banff, Aberdeenshire



CFA ARCHAEOLOGY LTD
The Old Engine House
Eskmills Park
Musselburgh
East Lothian, EH21 7PQ
T: 0131 273 4380
F: 0131 273 4381
info@cfa-archaeology.co.uk
www.cfa-archaeology.co.uk

Client:
Moray Offshore Windfarm (East) Ltd

Drawn by: CA	Checked: SW	Date: 04/02/19
Report No: 3800		Fig. No: 36-37



Fig. 38 - Trench 48, pit 4801 section from the South



Fig. 39 - Trench 51, general view from the SW

Project:
Moray Offshore Windfarm (East) Ltd, Onshore Cable Route. Cropmark Sites to the West & South of Banff, Aberdeenshire



CFA ARCHAEOLOGY LTD
The Old Engine House
Eskmills Park
Musselburgh
East Lothian, EH21 7PQ
T: 0131 273 4380
F: 0131 273 4381
info@cfa-archaeology.co.uk
www.cfa-archaeology.co.uk

Client:
Moray Offshore Windfarm (East) Ltd

Drawn by: CA	Checked: SW	Date: 04/02/19
Report No: 3800		Fig. No: 38-39



Fig. 40 - Trench 51, pit 5101 unexcavated from the NW



Fig. 41 - Trench 51, pit 5109 unexcavated from the SW

Project:
Moray Offshore Windfarm (East) Ltd, Onshore Cable Route. Cropmark Sites to the West & South of Banff, Aberdeenshire



Client:
Moray Offshore Windfarm (East) Ltd

Drawn by: CA	Checked: SW	Date: 04/02/19
Report No: 3800		Fig. No: 40-41



Fig. 42 - Trench 51, large pit (or pits) 5115 unexcavated from the NW



Fig. 43 - Trench 51, pit 5103 NNW facing section

Project:
Moray Offshore Windfarm (East) Ltd, Onshore Cable Route. Cropmark Sites to the West & South of Banff, Aberdeenshire



CFA ARCHAEOLOGY LTD
The Old Engine House
Eskmills Park
Musselburgh
East Lothian, EH21 7PQ
T: 0131 273 4380
F: 0131 273 4381
info@cfa-archaeology.co.uk
www.cfa-archaeology.co.uk

Client:
Moray Offshore Windfarm (East) Ltd

Drawn by: CA	Checked: SW	Date: 04/02/19
Report No: 3800		Fig. No: 42-43



Fig. 44 - Trench 51, pit 5113 NW facing section

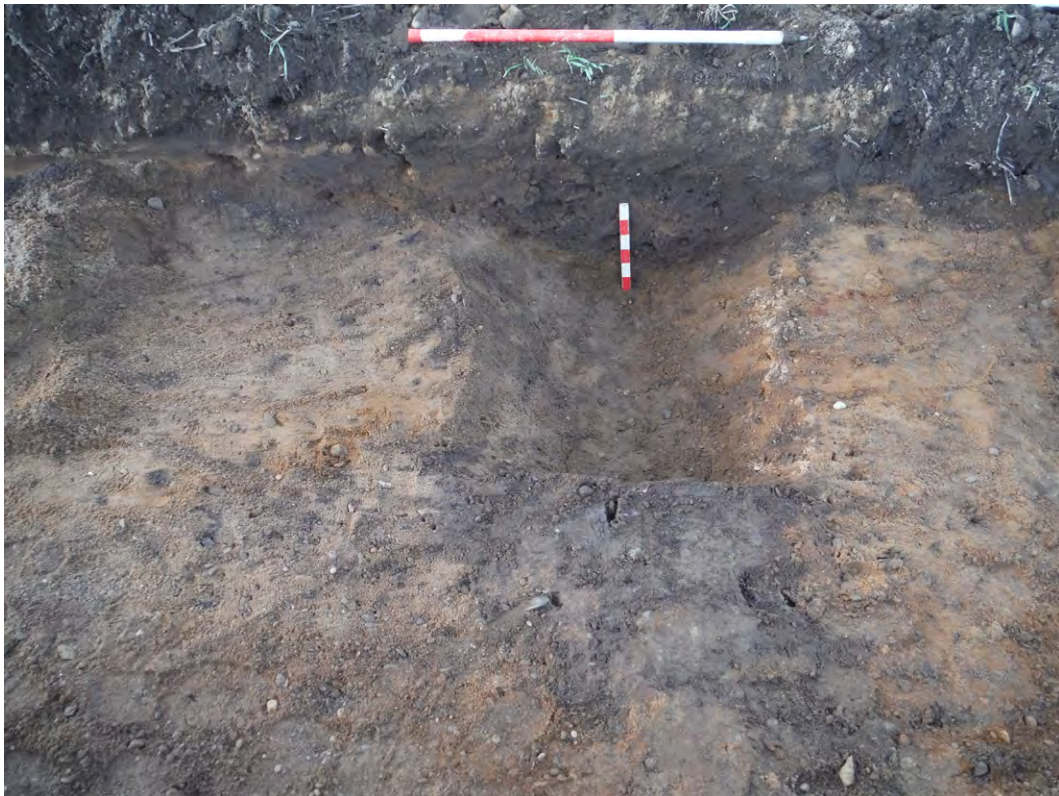


Fig. 45 - Trench 51, linear feature 5117 and section from the SE

Project:
Moray Offshore Windfarm (East) Ltd, Onshore Cable Route. Cropmark Sites to the West & South of Banff, Aberdeenshire



Client:
Moray Offshore Windfarm (East) Ltd

Drawn by: CA	Checked: SW	Date: 04/02/19
Report No: 3800		Fig. No: 44-45



CFA ARCHAEOLOGY
www.cfa-archaeology.co.uk

HEAD OFFICE - Musselburgh

Old Engine House
Eskmills Park, Musselburgh
East Lothian, EH21 7PQ

t: +44 (0) 131 273 4380
e: enquiries@cfa-archaeology.co.uk

Leeds

Offices C1 & C2
Clayton Business Centre, Midland Road
Leeds, LS10 2RJ

t: +44 (0) 113 271 6060
e: yorkshire@cfa-archaeology.co.uk

Manchester

44G9, Europa Business Park
Bird Hall Lane, Cheadle Heath
Manchester, SK3 0XA

t: +44 (0) 161 428 8224
e: manchester@cfa-archaeology.co.uk

Milton Keynes

Suite 11, Letchworth House
Chesney Wold, Bleak Hall
Milton Keynes, MK6 1NE

t: +44 (0) 1908 226 124
e: miltonkeynes@cfa-archaeology.co.uk

Carlisle

Warwick Mill Business Village
Warwick Bridge, Carlisle
Cumbria, CA4 8RR

t: +44 (0) 1228 564 531
e: cumbria@cfa-archaeology.co.uk

Sheffield

Office 5, Ecclesfield Business Centre
46 Stocks Hill, Ecclesfield
Sheffield, S35 9YT

t: +44 (0) 114 327 1108
e: sheffield@cfa-archaeology.co.uk

Leicester

Business Box
3 Oswin Road, Brailsford Industrial Estate
Leicester, LE3 1HR

t: +44 (0) 116 279 5156
e: leicestershire@cfa-archaeology.co.uk

Hertfordshire

Amwell House
9 Amwell Street, Hoddesdon
Hertfordshire, EN11 8TS

t: +44 (0) 845 017 9847
e: herts@cfa-archaeology.co.uk