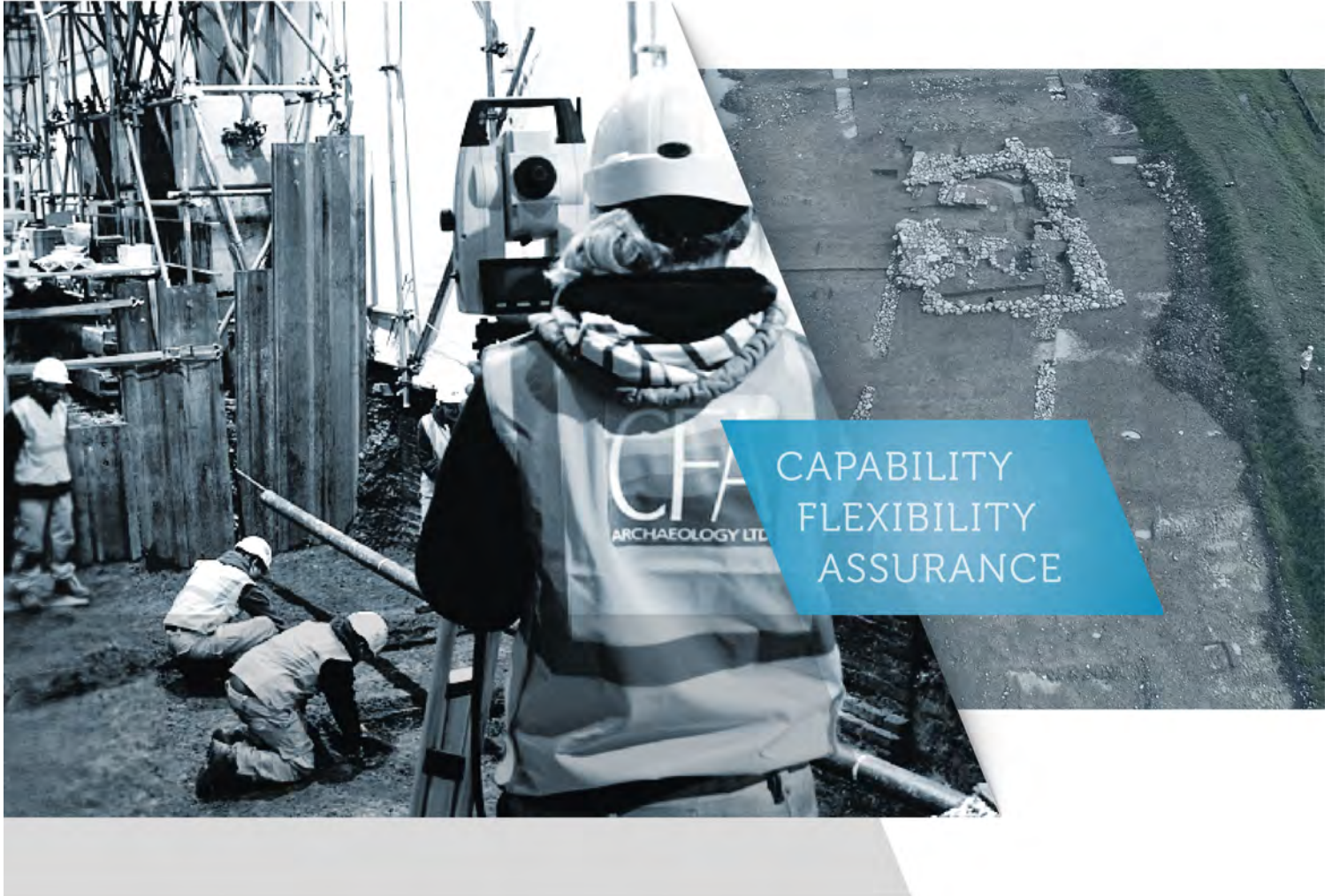




CFA ARCHAEOLOGY

Professional cultural heritage consultants - branches nationwide
enquiries@cfa-archaeology.co.uk



CAPABILITY
FLEXIBILITY
ASSURANCE

Halls Farm Cottages, Nr Dunbar, East Lothian

Basic Historic Building Survey
Report No. 3990

Author(s):

Stuart Mitchell MA MCIfA

Michael Cressey BA MSc PhD FSA Scot MCIfA



sCFA ARCHAEOLOGY LTD

The Old Engine House
Eskmills Business Park
Musselburgh
East Lothian
EH21 7PQ

Tel: 0131 273 4380
Fax: 0131 273 4381
email: info@cfa-arch.co.uk
web: www.cfa-archaeology.co.uk

Author	Stuart Mitchell, MA MCIfA and Michael Cressey BA MSc PhD FSA Scot MCIfA
Illustrator	Rachel Kershaw BSc PCIfA
Approver	Melanie Johnson MA PhD FSA Scot MCIfA
Commissioned by	W N Thomson & Co Architects on behalf of Mr & Mrs H. Jeffrey
Date issued	December 2020
Version	2
Oasis Ref No.	cfaarcha1-408248
Grid Reference No.	NT 65214 72823
Planning Application No.	19/00283/P

This document has been prepared in accordance with CFA Archaeology Ltd
standard operating procedures.

**Halls Farm Cottages,
Nr Dunbar, East Lothian**

Basic Historic Building Survey

Report No. 3990

CONTENTS

1.	Introduction	4
2.	Methodology	4
3.	Desk Based Assessment Results	5
4.	Survey Results	6
5.	Discussion	11
6.	Conclusion	11
7.	References	12

Appendices

Appendix 1	Photographic Register	13
Appendix 2	Discovery and Excavation in Scotland Entry	17

Illustrations (bound at rear)

1a-b	Site location and site layout plan with photographic viewpoints
2a-e	Historical map regression
3.	External elevation drawings
4.	Buildings 1-3, layout plans with Unit Number and Photographic Viewpoints
5.	East elevations of Buildings 1-3
6.	North elevation of Building 3
7.	West elevations of Building 1-3 from a distance
8.	West elevation (gable) of building 1
9.	West elevation of Building 3 (gable), brick extension
10.	Building 1 north elevation, with rear extension
11.	Building 1, Unit 3, kitchen interior
12.	Building 1, Unit 6, living room
13.	Building 1, Unit 11, bathroom
14.	Building 2, Exterior east and north gable
15.	Building 2 Exterior west elevation with surviving washhouse chimney
16.	Building 2, Unit 14, bedroom with cast-iron fireplace and window shutter
17.	Building 2, Unit 16, living room with tiled fireplace
18.	Building 2, Unit 18, bedroom with cast-iron fireplace and rubble gable wall
19.	Building 2, Unit 2, bedroom fireplace and shuttered window
20.	Building 3, Exterior north elevation with porch and brick-built extension
21.	Building 3, Exterior south elevation with brick-built extensions
22.	Building 3, Unit 28, living room and mullioned window
23.	Building 3, Unit 32, kitchen and boarded window
24.	Building 3, Unit 36, living room with fireplace and single window
25.	Building 3, Unit 39, bathroom with 20 th century toilet cistern

26. Building 3, Unit 41, bedroom with cast-iron fireplace
27. Building 3, Unit 42 bedroom with horse-shoe shaped fireplace
28. Building 3, Unit 43 kitchen with Belfast sink
29. Building 3, Unit 44 cupboard
30. Building 3, Unit 45 cupboard
31. Detached building (Unit 46) general view of its west side
32. Row of sheds (Unit 47) on the west side of the cottages
33. Interior of one of the sheds (Unit 27)

Thumbnail Prints Bound at Rear

1. INTRODUCTION

This report presents the results of a basic historic building survey at Halls Farm, Near Dunbar, East Lothian carried out by CFA in October 2020 for W N Thomson & Co Architects on behalf of Mr & Mrs H Jeffrey.

Planning permission and listed building consent was granted for the conversion of a row of uninhabited farm cottages into a single modern dwelling. Originally the cottages comprised three individual blocks subdivided into six cottages with later additions to the rear.

East Lothian Council Archaeology Service (ELCAS) requested that a *Basic* historic building survey be carried out to record the Category C Listed cottages prior to their alteration. A Written Scheme of Investigation (WSI), prepared by CFA, was approved by ELCAS in advance of work.

The project's aims and objectives were to:

- Carry out a desk-based assessment to place the cottages in their historical setting.
- Carry out a *Basic* building survey of the buildings prior to their conversion.
- Provide an illustrated data structure report on the results of the survey.

2. METHODOLOGY

2.1 General

CFA followed the Chartered Institute for Archaeologists' (CIfA) Code of Conduct, Standards and Guidelines as appropriate.

2.2 Desk-based Assessment

Up-to-date information on the site was sought from the Canmore online database and the Historic Environment Record (HER), through Pastmap.

Ordnance Survey maps and other early maps held by the Map Library of the National Library of Scotland were examined to identify the earliest mapped occurrence of the site and its development through time.

The HES Statutory List was examined to provide architectural information.

The Scottish Buildings at Risk Register was examined to establish what information was held.

2.3 Building Recording

Building recording followed the guidelines set out in ALGAO (2013) and supplemented with established CFA recording methods.

Table 1 sets out the survey requirements:

Cottages	Drawings	Photographic
Interiors	Marked-up floor plans	General interior shots recording period architectural detail and general layout
External Elevations	Marked-up external elevations	General exterior shots recording period architectural detail. Highlighted blocking work or intrusions if so required.

Table 1. List of survey requirements at Halls Farm Cottages

CFA used a Nikon D300 to take digital photographs of structures and specific architectural features.

A detailed photographic record was made of all external elevations of the cottages. General shots of the interior rooms were also taken.

A full list of all the photographs is included as Appendix 1. Photographic numbers and viewpoints are provided on the scaled floor plans.

Pro forma building survey recording forms were completed on a room by room basis to record fabric detail, repair work, finishes, and period fixtures and fittings.

Internal and external building measurements are outside the parameters of this level of survey, but the scaled plans and elevations provided by the client were checked for accuracy and were found to be correct.

3. DESK BASED ASSESSMENT RESULTS

3.1 Cartographic Sources

The 1855 First Edition Ordnance Survey map shows Halls Farm, but the cottages had yet to be built (Fig 2a). The cottages are depicted on the 1894 Second Edition Ordnance Survey map (Fig 2b) and are shown with their property boundary adjacent to the road that passes the farm. Two outhouses are shown on their west side. The 1907 Ordnance Survey map shows no changes occurred since 1894 (Fig 2c). The cottages are depicted on subsequent maps sheets (Fig 2d-e). A brick-built extension to the western side of Building 3 was added between the 1957 Ordnance Survey map and the 1969 Ordnance Survey Map (Fig 2d-e). The 1969 Ordnance Survey map depicts the cottages with the same footprint as shown in Fig 1.

3.2 HES Canmore Database

The HES Canmore database contains record NT67SE 39. The entry provides no descriptive information on the architectural character of the cottages and repeats the description in the Buildings at Risk Register.

3.3 The HES Statutory List

The HES Statutory List records the cottages as LB14761 and have a Category C listing. The entry for the cottages includes the following:

Circa 1860. 5 single storey farm cottages, 4 grouped in pairs¹, to form U-plan open to west. Rubble with ashlar dressings; timber mullions to bipartite windows, inserted later. North and east blocks: 6-bay. Widely grouped windows at centre flanking advanced, gabled porches, with chamfered arrises to door surrounds. Single windows to outer bays. South block: 6-bay. Porch, detailed as above in penultimate bay to right. Windows to remaining bays.

Rears: brick lean-to late 19th century additions, with piend-roofed brick additions to west ends of north and south wings. South wing deprived of porch at left, blocked as window. Horizontal pane glazing pattern. Slate roofs. Coped gable end and mutual gable stacks. Simple timber barge boarding to porches. A neat group of cottages in a fashionable style, connected with Halls Farmhouse.

3.4 Buildings at Risk Register

The Buildings at Risk Register contains reference No. 5028 for the cottages. The description includes that given in the Statutory List and it also mentions their general uninhabited condition as noted during site visits in 2011 and 2014.

4. SURVEY RESULTS

The following section includes the survey results which include a description of the exterior elevations for each building (Buildings 1-3) followed by a tabulated inventory describing the interior of each room (hereafter Unit) along with the presence of any period features and other point of interest. Figure 3 provides the client's drawings that are depicted using alphabetical notation for each elevation. Figure 4a shows the layout of the cottage complex followed by more detailed floor plans (Figs 4b-d).

4.1 Building 1

Building 1 comprised a rectangular block of a single cottage.

4.1.1 Exterior Elevations

North Elevation, Fig 3 Elevation E & Fig 10

The north elevation was at the rear of the building facing the garden and Building 2. It contained two brick extensions that had been harled. The roofs were felted. The main elevation was built of coursed sub-angular whinstone (basalt) and the margins around the fenestration comprised stugged ashlar dressings using local Old Red Sandstone (ORS). The windows were all sash-and-case (4-over-4). The extensions had plain plank-built doors with both sash-and-case and single paned windows. The pitched roof was slated, had sandstone ridge skews and the three chimney stacks were a combination of ORS and whinstone.

¹ The current building survey does not include the cottages situated to the south outside the redevelopment boundary.

East Elevation, Elevation Fig 3 Elevation A & Fig 5

The east elevation faced onto the main road leading to Halls Farm. The elevation comprised a pitched gable constructed with grey whinstone with stugged ORS dressings. The window on the north side was a part boarded sash-and-case with the top panes surviving. The stack and ridge copings were ORS with the former incorporating two courses of whinstone.

South elevation, Fig 3 Elevation D

The south elevation had five bays and an outshot porch. The fabric was the same as the rear. The fenestration comprised two sash-and-case windows on the first two bays, two mullioned sash-and-case windows with a single sash window on the other side of the porch. The sills were slightly advanced. The two mullioned windows appeared to have replacement lintels. The porch had a pitched timber-framed roof covered with slates. The entrance walls had been embellished with stugged ORS. The main entrance had a plain panelled door.

West Elevation, Fig 3 Elevation C & Fig 8

The west elevation was a gable wall that mirrored the east gable and contained no additional features. Its window also on the north side was complete. The wall appeared to have been re-pointed as the joints were very sharp.

4.1.2 Interior layout

The interior units are described in Table 2 and shown on Fig 4b.

Unit No.	Summary description	Period Feature
	<i>Cottage 1</i>	
1	Main door with ORS surrounds. A 6-pane frosted glass door	Porch
2	Vestibule and hall leading to all spaces on the ground floor	None
3	Kitchen with modern cupboards. Plaster board wall linings (Fig 11)	None
4	Rear extension with work top and coat rail. Plain two paneled door and single paned and part boarded sash window.	Pre-modern coat hooks
5	Cupboard at the south end of Unit 4.	None
6	Living room lit by mullioned window on S wall and single sash on N wall. Modern brick-built fireplace (Fig 12)	Modern fireplace
7	Hallway to the rear door.	None
8	Bedroom lit by mullioned sash window. Built-in fitted wardrobe	Mullioned window (L.19 th C)
9	Bedroom lit by a sash window on the N wall. Fitted built in wardrobe at south end.	Sash window (L.19 th C)
10	Bedroom lit by a sash window at the north end and window on the W gable.	Sash window (L.19 th C)
11	Bathroom withing an extension with modern sanitary goods, enamel bath and pedestal sink. Frosted paned sash window on N wall. (Fig 13)	None
12	External Storeroom fitted out with shelving. Painted plaster walls	None

Table 2: List of interior spaces within Building 1 with Unit No, summary descriptions and period features

4.2 Building 2

Building 2 comprised a rectangular block divided into two workers' cottages.

4.2.1 Exterior Elevations

North Elevation, Fig 3 Elevation G & Fig 14

The north elevation was a windowless gable wall built using coursed sub-rectangular blocks with ORS dressings. The pitched roof had sandstone copings and the chimney stack was haunched with two chimney pots.

East Elevation Fig 3 Elevation A & Fig 14

The east elevation faced the main road and it had six bays, at the middle were two mullioned windows, flanked by two porches and two outer windows towards the gables. The main build was the same as Building 1. The central chimney had had a modern chimney pot added with a cowling. Both the doors were plank built.

South Elevation, Fig 3 Elevation F

The south elevation was a windowless gable wall built using coursed sub-rectangular blocks with ORS dressings. The pitched roof had sandstone copings and the chimney stack was haunched with two chimney pots.

West Elevation, Fig 3 Elevation C & Fig 15

The west elevation was the same as Building 1, but its windows were all boarded. Both outshot extensions had bare brick walls. Both had small brick-built chimneys typical of domestic washhouses which had a coal fired copper or boiler.

4.2.2 Interior layout

The interior units are described in Table 3 and shown on Fig 4c.

Unit No.	Summary description	Period Feature
	<i>Cottage 2</i>	
13	Planked-built front door to Cottage 2. Chamfer moulding on the porch door surrounds.	Porch
14	Bedroom with shuttered sash window and pre-modern cast-iron fireplace (Fig 16)	Pre-mod fireplace
15	Hall with cupboard.	None
16	Bedroom room with mullioned window, plank-built doors and pre-mod tiled fireplace (Fig 17)	Doors and pre-mod fireplace
17	Sitting room with pre-modern fireplace	None
18	Bedroom with small late 19 th C fireplace. Fallen plaster revealed the random rubble and brick build on the W wall. Sash window with brick reveals. (Fig 18)	19 th C fireplace
19	Passage with plank-built door to rear extension	None
20	Interior of the derelict out house	None
21	Room within the rear extension	None
	<i>Cottage 3</i>	
22	Porch and main entrance door to cottage	Porch

23	Entrance hall and cupboard	None
24	Hallway	None
25	Bedroom with ornate horse-shoe shaped fireplace. Shuttered sash window (Fig 19)	19 th C fireplace
26	Kitchen within the rear extension with a stainless-steel sink. Interior derelict.	None
27	Bathroom with collapsed ceiling. Modern sanitary goods.	None

Table 3: List of interior spaces within Building 2 with Unit No, summary descriptions and period features

4.3 Building 3

4.3.1 Exterior Elevations

Building 3 comprised a rectangular block divided into two workers' cottages.

North Elevation, Fig 3 Elevation B & Fig 20

The north elevation of Building 3 had seven bays two of which were the porches for the two individual cottages. The fabric was the same as seen on Building 1. However, the fenestration differed slightly as it had only one mullioned sash window. The rest were uniform single sash windows. The cottages had a brick-built extension added to its west end with a hipped slate roof and an-off centre sash window and brick chimney stack. The highly fired factory brickwork had been laid in stretcher bond.

East Elevation, Fig 3 Elevation A

The east elevation was rubble built with ORS dressings. The gable wall had no fenestration and was otherwise featureless.

South Elevation, Fig 3 Elevation H & Fig 21

South elevation faced onto the drying green and it had the brick-built extension at its west end with a hipped slate roof and brick chimney stack. It had a central sash-and-case window. Two brick-built outhouses were outshot off the main elevation. Their chimneys had been removed and the flat roofs appeared to be modern replacements. The fenestration on the main elevation was the same as that previously described with stugged ORS and with occasional replaced stonework.

West Elevation, Fig 3 Elevation C

The west elevation was a brick-built gable for the extension with the aforementioned hipped slate roof. A tall brick-built chimney stack had been built on its north side.

4.1.2 Interior layout

The interior units are described in Table 4 and shown on Fig 4d.

Unit No.	Summary description	Period Feature
	<i>Cottage 4</i>	
28	Front porch with main entrance door to cottage 3	Porch
29	Small box room with a sash window.	None
30	Living room with a central mullioned window. Tiled fireplace (Fig 22)	Pre-modern fireplace
31	Bedroom with single sash window, combed ceiling	None
32	Kitchen with Belfast sink with sash window over. Plank-built doors with a bathroom leading off (Fig 23)	Modern sink and taps
33	Bathroom lit by frosted sash window. High level toilet cistern with chain pull. Boxed in bath and pedestal sink. Ceiling combed.	Pre-mod cistern
34	Pantry off the kitchen	None
	<i>Cottage 5</i>	
35	Porch interior and main door to cottage 4	None
36	Living room with a pre-modern fireplace. The room was lit by a sash window (Fig 24). All the doors were plank-built with latches.	Pre-mod doors and fireplace
37	Hallway with papered walls. Pre-mod light switches	Light switches
38	Narrow hallway with papered walls.	None
39	Bathroom with high level toilet cistern with chain pull. Cast-iron enameled bath. (Fig 25) Shuttered half frosted sash window. Recent lined pine reveals.	Toilet cistern
40	Small bedroom with a pre-modern fireplace with cast-iron surround and mantle. Two four-paneled doors. Sash window opposite the fireplace	Pre-mod fireplace
41	Bedroom with the same fireplace seen in Unit 40. Four paneled doors. Cupboard to the right of the fireplace. Picture rail round the walls. Bakelite light switch (Fig 26).	Pre-modern fireplace and light switch
42	Bedroom with narrow cast iron horse-shoe shaped fireplace with press cupboard to its left, sash window within a splayed reveal (Fig 27).	19C fireplace
43	Kitchen, largely bare with no fittings except large, Belfast sink. Concrete floor, single sash window, two cupboards each with a wooden board doors, (Fig 28).	Early to mid 20 th C Belfast sink
44	Cupboard with a wooden board door, simple wooden shelves and small, single paned windows set high on the outside wall, (Fig 29).	None
45	Cupboard with a wooden board door, simple wooden shelves and small, single paned windows set high on the outside wall, (Fig 30).	None

Table 4: List of interior spaces within Building 3 with Unit No, summary descriptions and period features

4.4 Ancillary Buildings (Fig 4e & Fig 32 & 33)

Situated on the west side of the cottages within the proposed site boundary were two detached structures.

At the centre of what would have been a common drying green was a brick-built building (Unit 46) open to the south-west. It had a sloping concrete slab roof with a brick and stone floor. What the building was used for is not clear, but storage seems most likely.

On the western boundary of the site was a long brick-built shed (Unit 47, Figs 4e & 28-29) with six individual compartments accessed by plank-built doors. The building was brick and rubble-built with extensive re-pointing. The front elevation is brick-built but its rear and side walls include random rubble suggesting an earlier building was remodelled. The individual spaces were probably coal houses. The earlier building may have been the original outside earth closets in use prior to the installation of bathrooms.

On the north side of the property boundary was a low (c.1m high) rubble-built boundary wall topped with saddle coping stones.

5. DISCUSSION

The three separate blocks now formed five individual cottages. Originally there were six grouped in three pairs. At some stage the south cottages (Building 1) became a single cottage. The east cottages (Building 2) were then also joined together by a linking doorway forming one cottage. The north cottages (Building 3) with a brick-built extension always remained as two cottages. These buildings are very typical of late 19th century agricultural workers dwellings built during the so called 'high farming period'. Commonly, this form of housing was architecturally in keeping with the character and style of the 'home farm' during this period. All three blocks shared the same traditional architectural style typical of this period using local (East Lothian) whinstone and ORS dressings.

The interior spaces are considered by the author to be utilitarian with mainly mid to late 20th century features surviving including 'modern' bathrooms and fitted kitchens. The tiled fireplaces appear to date from the first half of the 20th century whilst the small bedroom fireplaces of cast-iron are likely to date to the second half of the 19th century. Building 2 has retained its old chimney stacks on the two extensions which strongly suggest that all the extensions were originally used as washhouses with a coal-fired cast iron 'copper', as was typical before the advent of washing machines in the late 1950s and early 1960s. The outhouses on Buildings 1 and 3 had been later converted with the addition of a kitchen and bathroom.

The small, detached brick-built building (Unit 46) may have been a storage shed but its true function is not known.

The rectangular building on the edge of the site boundary (Unit 47) may have originally started life as a row of earth closets (outside toilets) that were later converted into a row of coal houses.

6. CONCLUSION

The survey has recorded the farm workers' cottages that lay within the proposed development boundary. None of the buildings are considered to warrant any further recording prior to their conversion into a single dwelling. The detailed photographic record provides a sufficient record of their interior plan form and architectural character. CFA recognises that the requirement for any further building recording work, however, lies with ELCAS.

The project archive, comprising all CFA record sheets, maps and reports, will be deposited with the NHRE and copies of reports will be lodged with the ELCAS Historic Environment Record.

A summary statement will be submitted for publication in *Discovery and Excavation in Scotland* and will also be reported on through *OASIS Scotland* following the completion of the trial trenching evaluation phase of work.

7. REFERENCES

Bibliographic

ALGAO Scotland 2013 *Historic Building Recording Guidance for Curators, Consultants and Contractors*.

Cartographic

Ordnance Survey 1855 First Edition Haddingtonshire Sheet 11

Ordnance Survey 1894 Second Edition Haddingtonshire Sheet XI.8 (Spot; Stenton).

Ordnance Survey 1907 First Edition Haddingtonshire Sheet XL.8

Ordnance Survey 1957 NT67SE 1:10000 scale.

Ordnance Survey 1969 NT6472-NT6572 -AA- (includes Spott; Stenton)

APPENDIX 1. PHOTOGRAPHIC REGISTER

Shot No.	Subject description	Facing
1	Panoramic view of the cottages	NE
2	Panoramic view of the cottages	NE
3	Panoramic view of the cottages	W
4	Panoramic view of the cottages	SW
5	Panoramic view of the cottages	SW
6	Panoramic view of the cottages	S
7	Panoramic view of the cottages	E
8	Panoramic view of the cottages	E
9	Panoramic view of the cottages	NE
10	Panoramic view of the cottages	NE
11	Panoramic view of the cottages	SE
12	Panoramic view of the cottages	N
13	Building 1, Exterior S elevation	N
14	Building 1, Exterior S elevation	N
15	Building 1, Exterior S elevation	N
16	Building 1, Exterior S elevation, porch	N
17	Building 1, Exterior S elevation	NW
18	Building 1, Exterior S elevation	NE
19	Building 1, Exterior E gable	W
20	Building 1, Exterior E gable and extension	S
21	Building 1, Exterior N elevation and extension	S
22	Building 1, Exterior N elevation and extension	SE
23	Building 1, Exterior N elevation and extension	SW
24	Building 1, Exterior N elevation and extension	SW
25	Building 1, Exterior N elevation and extension	SE
26	Building 1, Exterior W gable	E
27	Building 2, Exterior E elevation, porch	W
28	Building 2, Exterior E elevation, porch	W
29	Building 2, Exterior E elevation, porch	W
30	Building 2, Exterior E and N elevations oblique view	SW
31	Building 2, Exterior W elevation	SE
32	Building 2, Exterior W elevation	E
33	Building 2, Exterior W elevation extensions	E
34	Building 2, Exterior W elevation extensions	NE
35	Building 2, Exterior W elevation extensions	SE
36	Building 2, Exterior W elevation extensions	E
37	Building 2, Exterior W elevation	E
38	Building 3, Exterior N elevation	S
39	Building 3, Exterior N elevation	S
40	Building 3, Exterior N elevation	S
41	Building 3, Exterior N elevation and extension	S
42	Building 3, Exterior S elevation and extension	N
43	Building 3, Exterior S elevation and extension	NE
44	Building 3, Exterior S elevation and extension	N
45	Building 3, Exterior S elevation and extension	N
46	Building 3, Exterior E elevation and extension	E
47	Building 3, Exterior W elevation and extension	E
48	Building 3, Exterior oblique S elevation	E
49	Building 1, Unit 1	N
50	Building 1, Unit 2	N
51	Building 1, Unit 2	S
52	Building 1, Unit 3	S
53	Building 1, Unit 3	N
54	Building 1, Unit 4	W

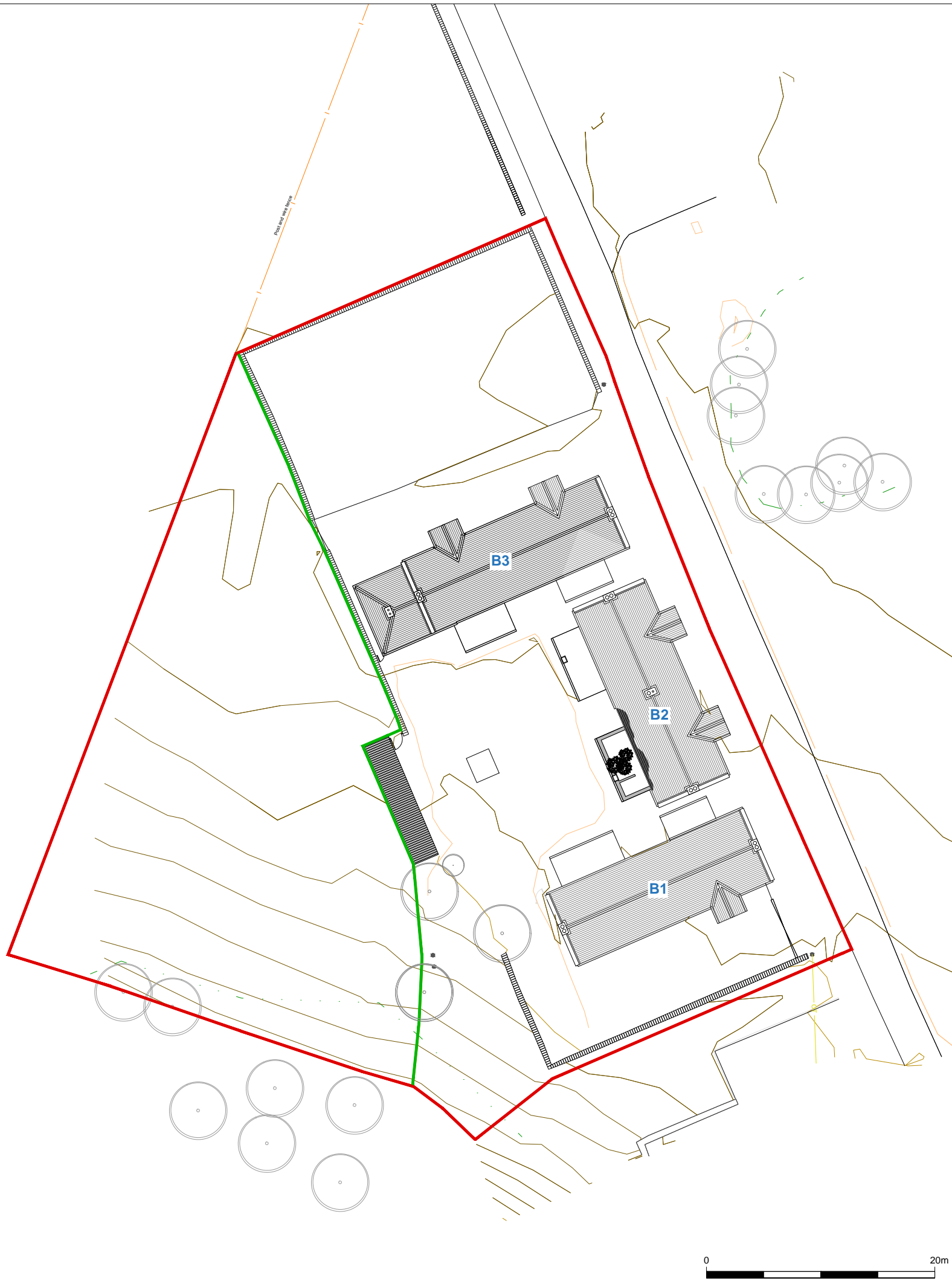
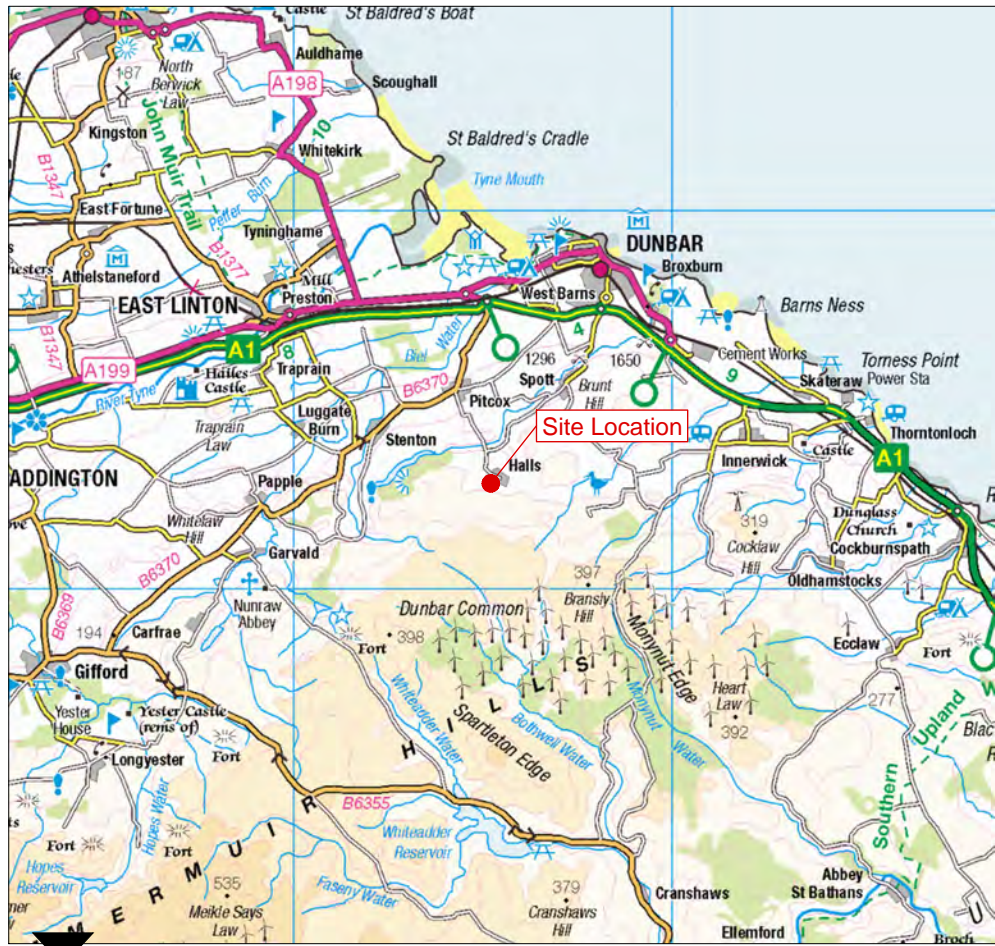
Shot No.	Subject description	Facing
55	Building 1, Unit 4 & 5	E
56	Building 1, Unit 6	S
57	Building 1, Unit 6	NW
58	Building 1, Unit 6	W
59	Building 1, Unit 7	W
60	Building 1, Unit 8	S
61	Building 1, Unit 8	N
62	Building 1, Unit 9	S
63	Building 1, Unit 9	N
64	Building 1, Unit 10	S
65	Building 1, Unit 10	N
66	Building 1, Unit 10 & 7	S
67	Building 1, Unit 11	N
68	Building 1, Unit 11	SE
69	Building 1, Unit 12	N
70	Building 1, Unit 12	W
71	Building 2, Unit 13	W
72	Building 2, Unit 14	S
73	Building 2, Unit 14	SW
74	Building 2, Unit 14	E
75	Building 2, Unit 14	N
76	Building 2, Unit 15	W
77	Building 2, Unit 16	W
78	Building 2, Unit 16	W
79	Building 2, Unit 16	W
80	Building 2, Unit 16	N
81	Building 2, Unit 16	E
82	Building 2, Unit 16	SE
83	Building 2, Unit 19	W
84	Building 2, Unit 18	S
85	Building 2, Unit 18	W
86	Building 2, Unit 18	W
87	Building 2, Unit 17	S
88	Building 2, Unit 17	W
89	Building 2, Unit 17	N
90	Building 2, Unit 17	N
91	Building 2, Unit 25	W
92	Building 2, Unit 25	S
93	Building 2, Unit 24	S
94	Building 2, Unit 24	N
95	Building 2, Unit 24	NE
96	Building 2, Unit 23	W
97	Building 2, Unit 22	W
98	Building 2, Unit 26	W
99	Building 2, Unit 26	N
100	Building 2, Unit 27	E
101	Building 2, Unit 20	S
102	Building 2, Unit 20	SE
103	Building 3, Unit 28	S
104	Building 3, Unit 29	NE
105	Building 3, Unit 29	SE
106	Building 3, Unit 30	W
107	Building 3, Unit 30	SW
108	Building 3, Unit 30	W
109	Building 3, Unit 30	S
110	Building 3, Unit 30	N
111	Building 3, Unit 32	S

Shot No.	Subject description	Facing
112	Building 3, Unit 32	W
113	Building 3, Unit 32	E
114	Building 3, Unit 31	E
115	Building 3, Unit 31	W
116	Building 3, Unit 33	W
117	Building 3, Unit 33	NW
118	Building 3, Unit 34	SE
119	Building 3, Unit 35	S
120	Building 3, Unit 37	S
121	Building 3, Unit 37	S
122	Building 3, Unit 37	N
123	Building 3, Unit 36	NE
124	Building 3, Unit 36	E
125	Building 3, Unit 36	N
126	Building 3, Unit 36	W
127	Building 3, Unit 36	S
128	Building 3, Unit 36	E
129	Building 3, Unit 43	SE
130	Building 3, Unit 43	SW
131	Building 3, Unit 44	SE
132	Building 3, Unit 45	E
133	Building 3, Unit 42	W
134	Building 3, Unit 42	W
135	Building 3, Unit 42	S
136	Building 3, Unit 39	W
137	Building 3, Unit 39	N
138	Building 3, Unit 38	E
139	Building 3, Unit 38	W
140	Building 3, Unit 41	W
141	Building 3, Unit 41	W
142	Building 3, Unit 41	N
143	Building 3, Unit 41	N
144	Building 3, Unit 41	N
145	Building 3, Unit 40	W
146	Building 3, Unit 40	S
147	Building 3, Unit 40	E
148	Building 3, Unit 37, period phone	E
149	Exterior brick-built shed Unit 46	NE
150	Exterior brick-built shed Unit 46	E
151	Exterior brick-built shed Unit 46	N
152	Exterior brick-built shed Unit 46	SW
153	Exterior of sheds 47	SW
154	Exterior of sheds 47	NW
155	Exterior of sheds 47	W
156	Interior of sheds 47	W
157	Interior of sheds 47, brick bond detail	N
158	Shed 47 door latch detail	N
159	Shed 47 detail of Bakelite light switch	N
160	Shed 47 detail of Bakelite light switch	N
161	Building 1, Unit 14 window shutters	E
162	Building 1, Unit 14 window shutters	E
163	Building 1, Unit 14 door latch detail	
164	Building 1, Unit 14 door latch detail	E
165	Building 1, Unit 24 fireplace	N
166	Building 1, Unit 24 window shutters	E
167	Building 1, driveway to the rear	W
168	Boundary and lawn on the north side of the cottages	NW

Shot No.	Subject description	Facing
169	Boundary wall and lawn general view	N
170	Building 3 and front lawn with boundary wall	SW

APPENDIX 2: DISCOVERY AND EXCAVATION IN SCOTLAND ENTRY

LOCAL AUTHORITY:	East Lothian
PROJECT TITLE/SITE NAME:	Halls Farm Cottages, Nr Dunbar
PROJECT CODE:	HFCE
PARISH:	Stenton
NAME OF CONTRIBUTOR:	Michael Cressey
NAME OF ORGANISATION:	CFA Archaeology Ltd
TYPE(S) OF PROJECT:	Standing Building Survey
NMRS NO(S):	NT67SE 39
SITE/MONUMENT TYPE(S):	Farm Workers Cottages
SIGNIFICANT FINDS:	N/a
NGR (2 letters, 6 figures)	NT 65214 72823
START DATE (this season)	October 2020
END DATE (this season)	November 2020
PREVIOUS WORK (incl. DES ref.)	None
MAIN (NARRATIVE) DESCRIPTION: (May include information from other fields)	CFA carried out a basic historic building survey at Halls Farm, Near Dunbar, East Lothian in October 2020, prior to their conversion. Three late 19 th Century C listed buildings contained six individual farm workers' cottages associated with Halls Farm, Dunbar. All three blocks shared the same architectural character with rubble-built whinstone wall with contrasting red sandstone dressings. The rear elevations had 20 th century brick-built extensions that originally served as coal fired washhouses. These were later converted into kitchens and bathrooms. Building 1 is a single cottage but was originally two cottages, Buildings 2 was originally two cottages but remodelled to form a single cottage whilst Building 3 was extended it remained as two separate cottages. Modernisation had been extensive in the mid to late 20 th century with the installation of bathrooms and kitchens. Older fireplaces dating to the second half of the 19 th century were also represented. Two outhouses included a single storey brick-built shed and a rectangular stone and brick building with six compartments probably last used as coalhouses. The cottages were all unoccupied with Building 2 being in a very derelict state.
PROPOSED FUTURE WORK:	None
CAPTION(S) FOR ILLUSTRS:	None
SPONSOR OR FUNDING BODY:	W N Thomson Architects on behalf of Mr and Mrs H Jeffrey
ADDRESS OF MAIN CONTRIBUTOR:	CFA Archaeology Ltd, Old Engine House, Eskmills Business Park, Musselburgh, EH21 7PQ
EMAIL ADDRESS:	mressey@cfa-arch.co.uk
ARCHIVE LOCATION (intended/deposited)	Survey reports lodged with NHRE and SMR. Archive to be deposited with NHRE.



Key:

- Application site
- Field boundary

Reproduced with the permission of Ordnance Survey on behalf of The Controller of Her Majesty's Stationery Office, © Crown copyright. CFA Archaeology Ltd, Old Engine House, Eskmills Park, Musselburgh EH21 7PQ AL100034785

CFA ARCHAEOLOGY LTD
 The Old Engine House
 Eskmills Park
 Musselburgh
 East Lothian, EH21 7PQ
 T: 0131 273 4380
 F: 0131 273 4381
 enquiries@cfa-archaeology.co.uk
 www.cfa-archaeology.co.uk

Title:
Location map

Project:
**Halls Farm Cottages, Nr Dunbar, East Lothian
 Basic Historic Buildings Survey**

W N Thomson & Co on behalf of
 Mr & Mrs H. Jeffrey

Scale at A3:
1:400 (main inset)

Drawn by: CA	Checked: SW	Date: 24/11/2020
Report No: 3990	Fig. No: 1	

0 20m



Fig. 2a - 1855 First Edition Ordnance Survey

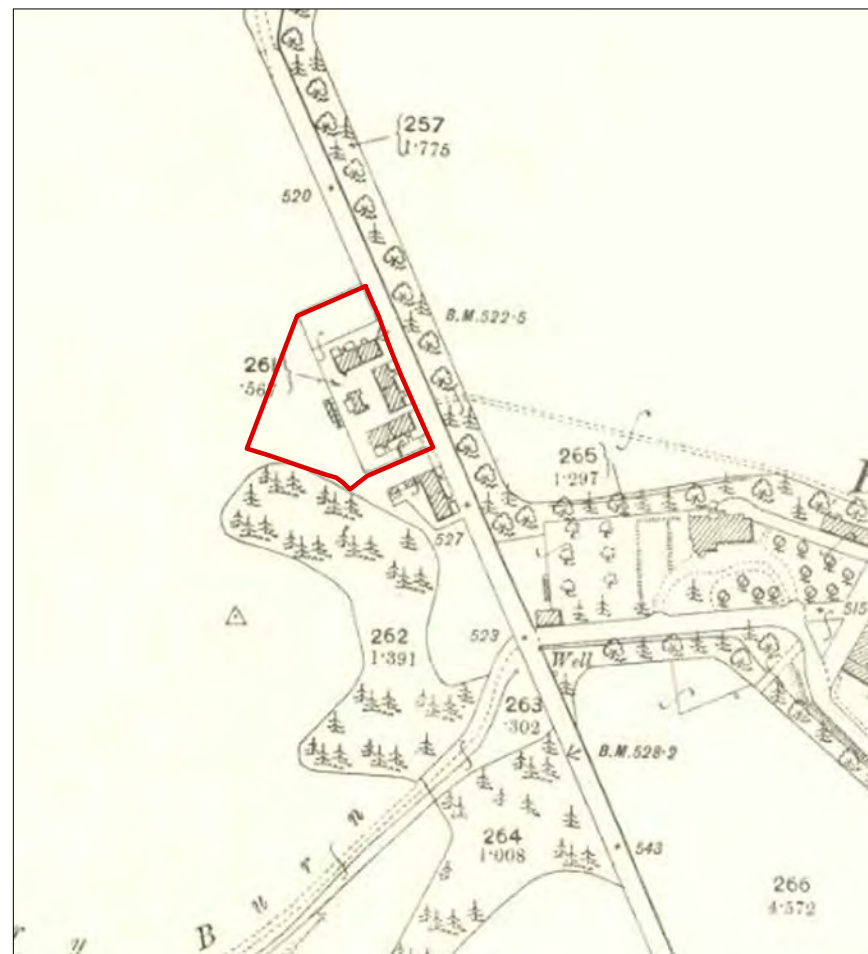


Fig. 2b - 1894 Second Edition Ordnance Survey

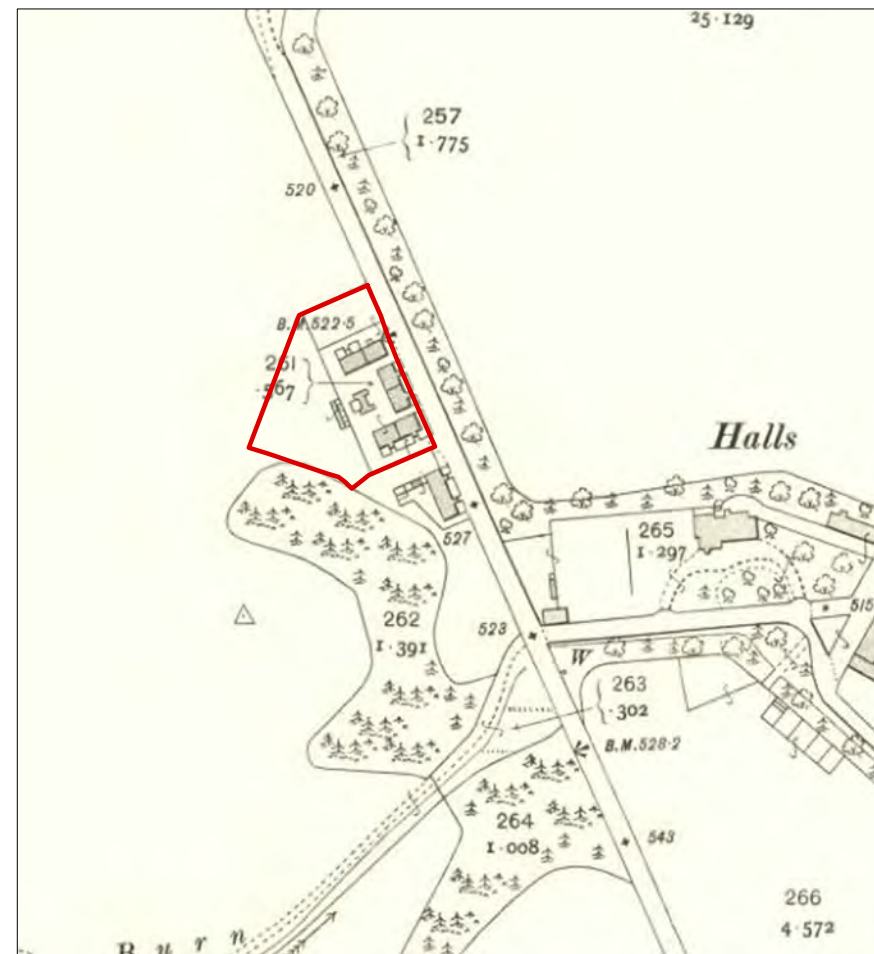


Fig. 2c - 1907 Ordnance Survey



Fig. 2d - 1957 Ordnance Survey



Fig. 2e - 1969 Ordnance Survey

Key:

Site boundary



Reproduced with the permission of Ordnance Survey on behalf of The Controller of Her Majesty's Stationery Office, © Crown copyright. CFA Archaeology Ltd, Old Engine House, Eskmills Park, Musselburgh EH21 7PQ AL100034785

CFA ARCHAEOLOGY LTD
 The Old Engine House
 Eskmills Park
 Musselburgh
 East Lothian, EH21 7PQ
 T: 0131 273 4380
 F: 0131 273 4381
 enquiries@cfa-archaeology.co.uk
 www.cfa-archaeology.co.uk

Title:
Historical Map Regression

Project:
**Halls Farm Cottages, Nr Dunbar,
 East Lothian
 Basic Historic Buildings Survey**

W N Thomson & Co on behalf of
 Mr & Mrs H. Jeffrey

Scale at A3:
1:3000

Drawn by: CA	Checked: SW	Date: 24/11/2020
-----------------	----------------	---------------------

Report No: 3990	Fig. No: 2
--------------------	---------------





ELEVATION A



ELEVATION B



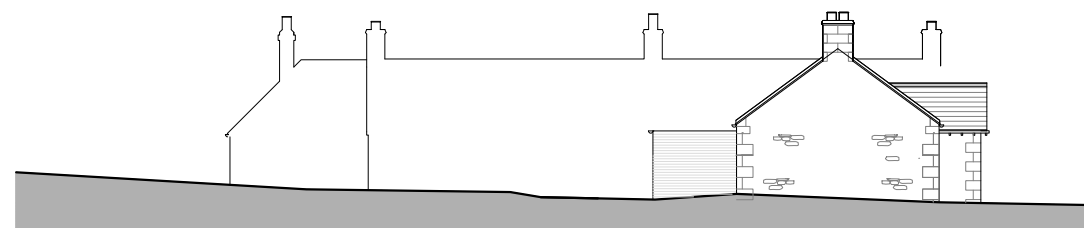
ELEVATION C



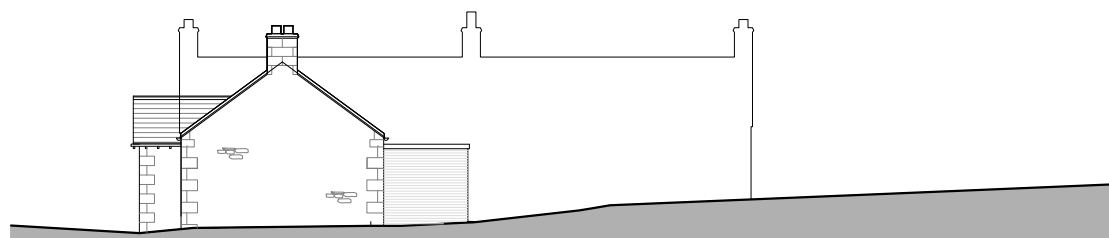
ELEVATION D



ELEVATION E



ELEVATION F



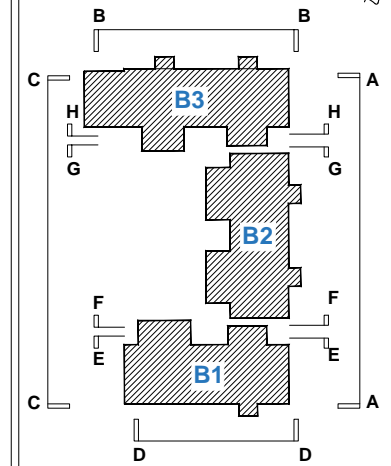
ELEVATION G



ELEVATION H



Key:



CFA ARCHAEOLOGY LTD
 The Old Engine House
 Eskmills Park
 Musselburgh
 East Lothian, EH21 7PQ
 T: 0131 273 4380
 F: 0131 273 4381
 enquiries@cfa-archaeology.co.uk
 www.cfa-archaeology.co.uk

Title:
Buildings 1-3 External Elevations

Project:
**Halls Farm Cottages, Nr Dunbar,
 East Lothian
 Basic Historic Buildings Survey**

W N Thomson & Co on behalf of
 Mr & Mrs H. Jeffrey

Scale at A3:
 1:250

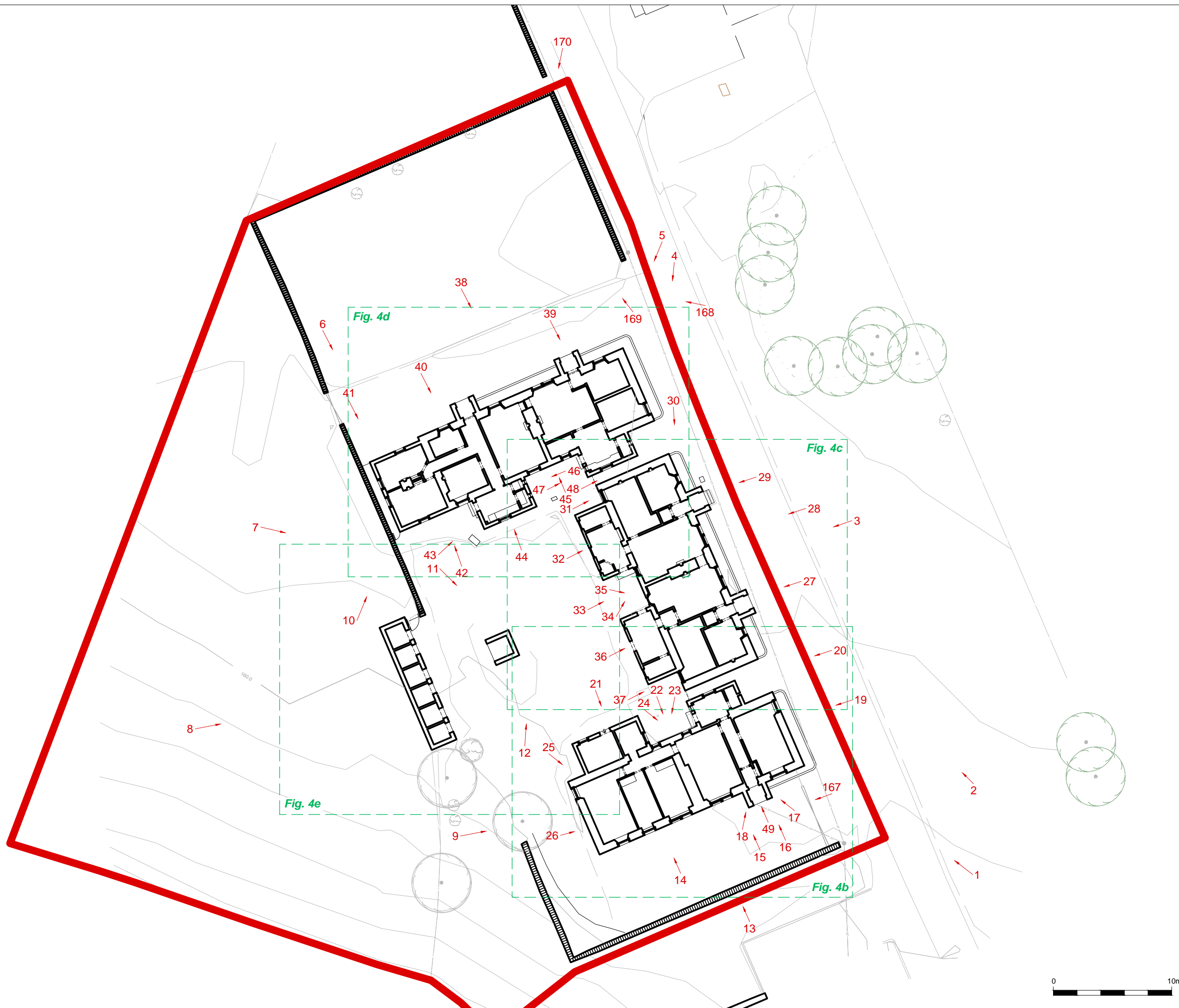
Drawn by: CA	Checked: SW	Date: 24/11/2020
-----------------	----------------	---------------------

Report No: 3990	Fig. No: 3
--------------------	---------------

Key:

 Application site

 Photo direction



CFA ARCHAEOLOGY LTD
 The Old Engine House
 Eskmills Park
 Musselburgh
 East Lothian, EH21 7PQ
 T: 0131 273 4380
 F: 0131 273 4381
 enquiries@cfa-archaeology.co.uk
 www.cfa-archaeology.co.uk

Title:
**Buildings 1-3 Ground plans with
 Unit Numbers and photographic
 viewpoints**

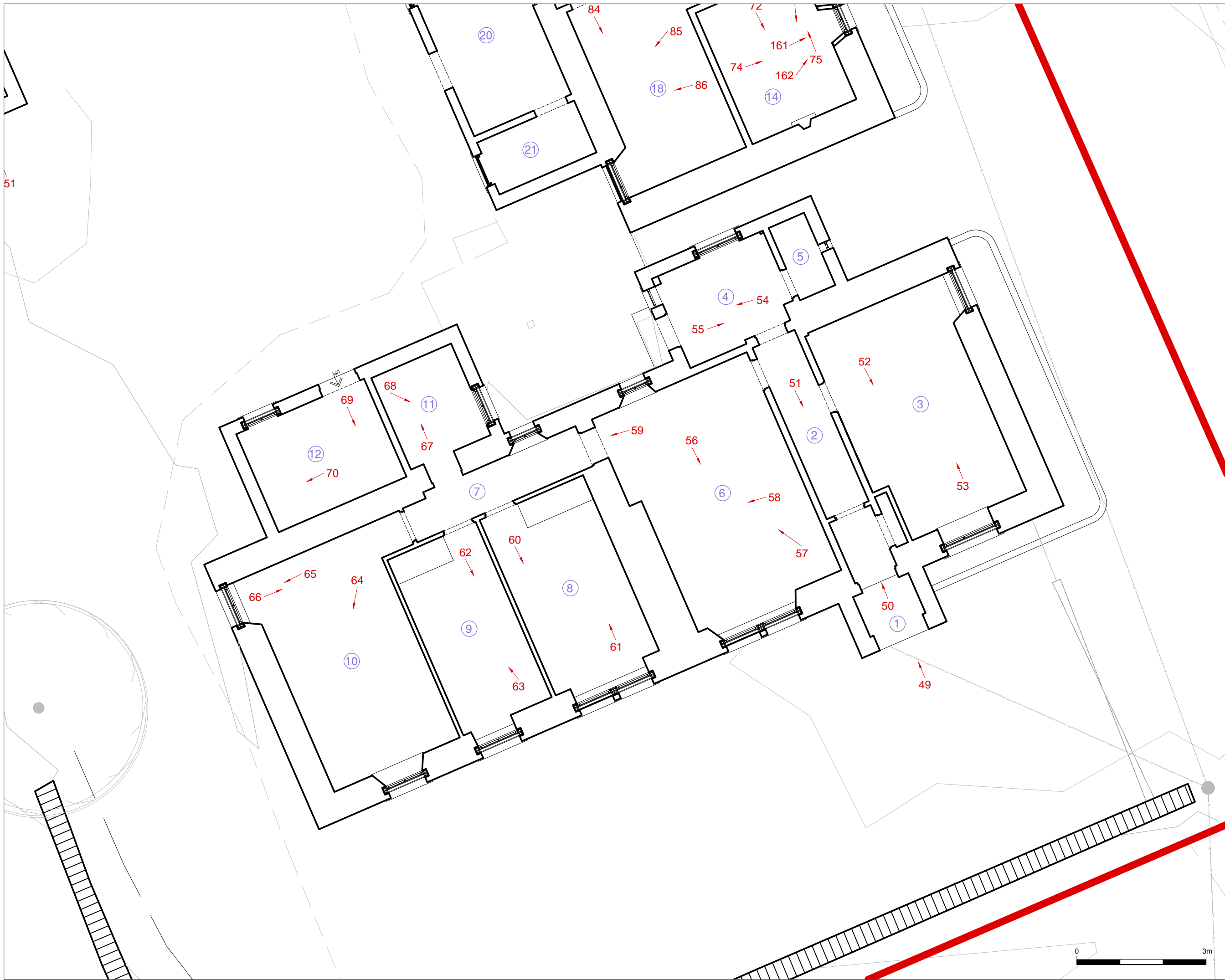
Project:
**Halls Farm Cottages, Nr Dunbar,
 East Lothian
 Basic Historic Buildings Survey**

W N Thomson & Co on behalf of
 Mr & Mrs H. Jeffrey

Scale at A3:
1:300

Drawn by: CA	Checked: SW	Date: 24/11/2020
-----------------	----------------	---------------------

Report No: 3990	Fig. No: 4a
--------------------	----------------



Key:

- Application site
- 2 Unit number
- ↖ Photo direction



CFA ARCHAEOLOGY LTD
 The Old Engine House
 Eskmills Park
 Musselburgh
 East Lothian, EH21 7PQ
 T: 0131 273 4380
 F: 0131 273 4381
 enquiries@cfa-archaeology.co.uk
 www.cfa-archaeology.co.uk

Title:
 Buildings 1-3 Ground plans with
 Unit Numbers and photographic
 viewpoints

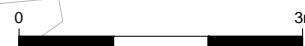
Project:
 Halls Farm Cottages, Nr Dunbar,
 East Lothian
 Basic Historic Buildings Survey

W N Thomson & Co on behalf of
 Mr & Mrs H. Jeffrey

Scale at A3:
 1:80

Drawn by: CA	Checked: SW	Date: 24/11/2020
-----------------	----------------	---------------------

Report No: 3990	Fig. No: 4b
--------------------	----------------





Key:

- Application site
- 2 Unit number
- 38 Photo direction



CFA ARCHAEOLOGY LTD
 The Old Engine House
 Eskmills Park
 Musselburgh
 East Lothian, EH21 7PQ
 T: 0131 273 4380
 F: 0131 273 4381
 enquiries@cfa-archaeology.co.uk
 www.cfa-archaeology.co.uk

Title:
Buildings 1-3 Ground plans with Unit Numbers and photographic viewpoints

Project:
**Halls Farm Cottages, Nr Dunbar, East Lothian
 Basic Historic Buildings Survey**

W N Thomson & Co on behalf of
 Mr & Mrs H. Jeffrey

Scale at A3:
1:80

Drawn by: CA	Checked: SW	Date: 24/11/2020
-----------------	----------------	---------------------

Report No: 3990	Fig. No: 4c
--------------------	----------------





Key:

- Application site
- 2 Unit number
- ↖ Photo direction




CFA
ARCHAEOLOGY LTD

CFA ARCHAEOLOGY LTD
The Old Engine House
Eskmills Park
Musselburgh
East Lothian, EH21 7PQ
T: 0131 273 4380
F: 0131 273 4381
enquiries@cfa-archaeology.co.uk
www.cfa-archaeology.co.uk

Title:
Buildings 1-3 Ground plans with Unit Numbers and photographic viewpoints

Project:
**Halls Farm Cottages, Nr Dunbar, East Lothian
Basic Historic Buildings Survey**

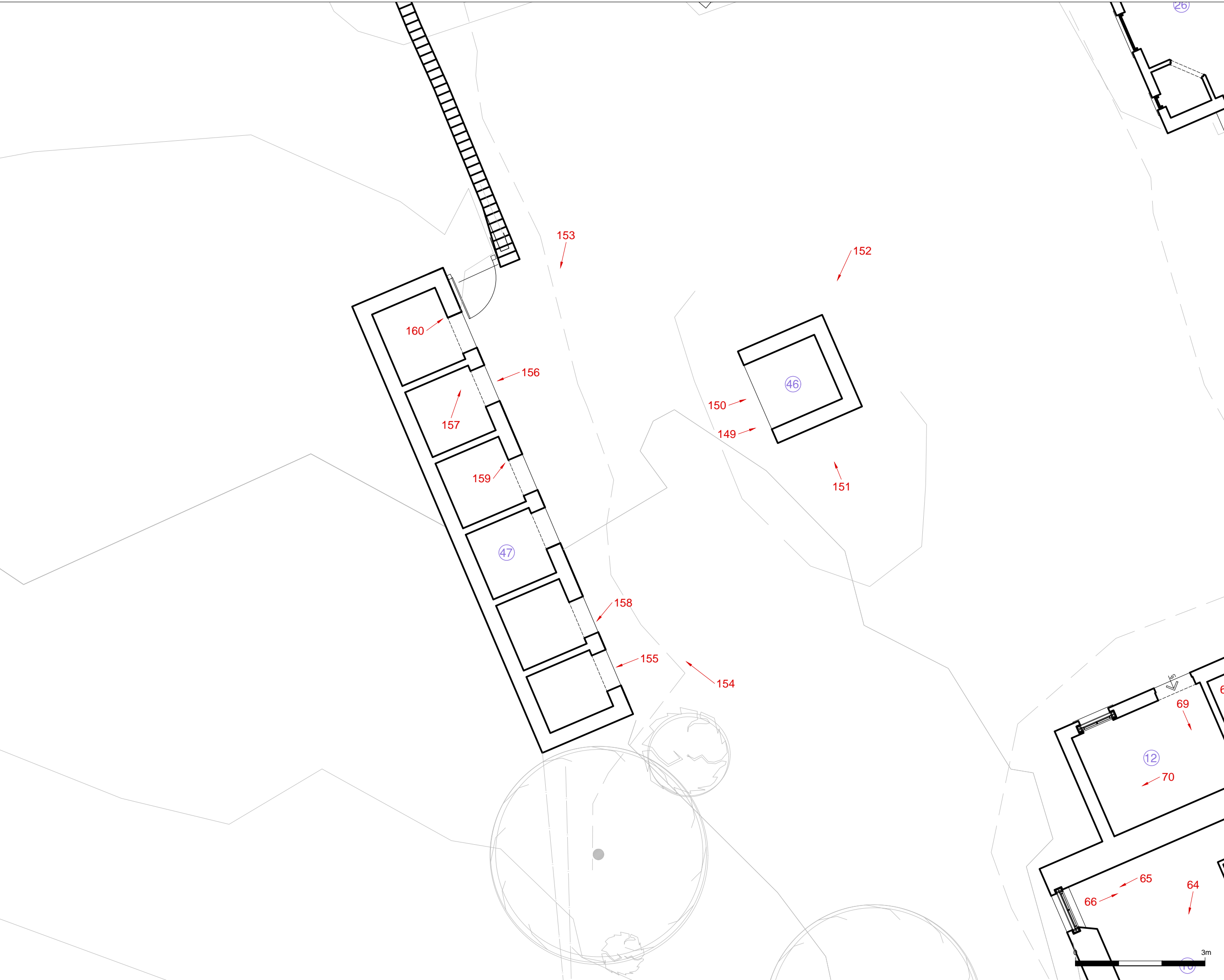
W N Thomson & Co on behalf of Mr & Mrs H. Jeffrey

Scale at A3:
1:80

Drawn by: CA	Checked: SW	Date: 24/11/2020
------------------------	-----------------------	----------------------------

Report No: 3990	Fig. No: 4d
---------------------------	-----------------------





Key:

- 2 Unit number
- ↖ 38 Photo direction

CFA ARCHAEOLOGY LTD
 The Old Engine House
 Eskmills Park
 Musselburgh
 East Lothian, EH21 7PQ
 T: 0131 273 4380
 F: 0131 273 4381
 enquiries@cfa-archaeology.co.uk
 www.cfa-archaeology.co.uk

Title:
 Buildings 1-3 Ground plans with
 Unit Numbers and photographic
 viewpoints

Project:
 Halls Farm Cottages, Nr Dunbar,
 East Lothian
 Basic Historic Buildings Survey

W N Thomson & Co on behalf of
 Mr & Mrs H. Jeffrey

Scale at A3:
 1:80

Drawn by: CA	Checked: SW	Date: 24/11/2020
-----------------	----------------	---------------------

Report.No: 3990	Fig. No: 4e
--------------------	----------------



Fig. 5 - East elevations of Buildings 1-3



Fig. 6 - North elevation of Building 3

Project:
Halls Farm Cottages, Nr Dunbar, East Lothian
Basic Historic Buildings Survey



CFA ARCHAEOLOGY LTD
 The Old Engine House
 Eskmills Park
 Musselburgh
 East Lothian, EH21 7PQ
 T: 0131 273 4380
 F: 0131 273 4381
 enquiries@cfa-archaeology.co.uk
 www.cfa-archaeology.co.uk

Client:
W N Thomson & Co on behalf of Mr & Mrs H. Jeffrey

Drawn by: CA	Checked: SW	Date: 26/11/20
Report No: 3990		Fig. No: 5-6



Fig. 7 - West elevations of Building 1-3 from a distance



Fig. 8 - West elevation (gable) of building 1

Project:
Halls Farm Cottages, Nr Dunbar, East Lothian
Basic Historic Buildings Survey



CFA ARCHAEOLOGY LTD
 The Old Engine House
 Eskmills Park
 Musselburgh
 East Lothian, EH21 7PQ
 T: 0131 273 4380
 F: 0131 273 4381
 enquiries@cfa-archaeology.co.uk
 www.cfa-archaeology.co.uk

Client:
W N Thomson & Co on behalf of Mr & Mrs H. Jeffrey

Drawn by: CA	Checked: SW	Date: 26/11/20
Report No: 3990		Fig. No: 7-8



Fig. 9 - West elevation of Building 3 (gable), brick extension



Fig. 10 - Building 1 north elevation, with rear extension

Project:
Halls Farm Cottages, Nr Dunbar, East Lothian
Basic Historic Buildings Survey



Client:
W N Thomson & Co on behalf of Mr & Mrs H. Jeffrey

Drawn by: CA	Checked: SW	Date: 26/11/20
Report No: 3990		Fig. No: 9-10



Fig. 11 - Building 1, Unit 3, kitchen interior



Fig. 12 - Building 1, Unit 6, living room

Project:
Halls Farm Cottages, Nr Dunbar, East Lothian
Basic Historic Buildings Survey



CFA ARCHAEOLOGY LTD
The Old Engine House
Eskmills Park
Musselburgh
East Lothian, EH21 7PQ
T: 0131 273 4380
F: 0131 273 4381
enquiries@cfa-archaeology.co.uk
www.cfa-archaeology.co.uk

Client:
W N Thomson & Co on behalf of Mr & Mrs H. Jeffrey

Drawn by: CA	Checked: SW	Date: 26/11/20
Report No: 3990		Fig. No: 11-12



Fig. 13 - Building 1, Unit 11, bathroom



Fig. 14 - Building 2, Exterior east and north gable

Project:
Halls Farm Cottages, Nr Dunbar, East Lothian
Basic Historic Buildings Survey



CFA ARCHAEOLOGY LTD
The Old Engine House
Eskmills Park
Musselburgh
East Lothian, EH21 7PQ
T: 0131 273 4380
F: 0131 273 4381
enquiries@cfa-archaeology.co.uk
www.cfa-archaeology.co.uk

Client:
W N Thomson & Co on behalf of Mr & Mrs H. Jeffrey

Drawn by: CA	Checked: SW	Date: 26/11/20
Report No: 3990		Fig. No: 13-14



Fig. 15 - Building 2 Exterior west elevation with surviving washhouse chimney



Fig. 16 - Building 2, Unit 14, bedroom with cast-iron fireplace and window shutter

Project:
Halls Farm Cottages, Nr Dunbar, East Lothian
Basic Historic Buildings Survey



CFA ARCHAEOLOGY LTD
The Old Engine House
Eskmills Park
Musselburgh
East Lothian, EH21 7PQ
T: 0131 273 4380
F: 0131 273 4381
enquiries@cfa-archaeology.co.uk
www.cfa-archaeology.co.uk

Client:
W N Thomson & Co on behalf of Mr & Mrs H. Jeffrey

Drawn by: CA	Checked: SW	Date: 26/11/20
Report No: 3990		Fig. No: 15-16



Fig. 17 - Building 2, Unit 16, living room with tiled fireplace



Fig. 18 - Building 2, Unit 18, bedroom with cast-iron fireplace and rubble gable wall

Project:
Halls Farm Cottages, Nr Dunbar, East Lothian
Basic Historic Buildings Survey



CFA ARCHAEOLOGY LTD
 The Old Engine House
 Eskmills Park
 Musselburgh
 East Lothian, EH21 7PQ
 T: 0131 273 4380
 F: 0131 273 4381
 enquiries@cfa-archaeology.co.uk
 www.cfa-archaeology.co.uk

Client:
W N Thomson & Co on behalf of Mr & Mrs H. Jeffrey

Drawn by: CA	Checked: SW	Date: 26/11/20
Report No: 3990		Fig. No: 17-18



Fig. 19 - Building 2, Unit 25, bedroom fireplace and shuttered window



Fig. 20 - Building 3, Exterior north elevation with porch and brick-built extension

Project:
Halls Farm Cottages, Nr Dunbar, East Lothian
Basic Historic Buildings Survey



CFA ARCHAEOLOGY LTD
The Old Engine House
Eskmills Park
Musselburgh
East Lothian, EH21 7PQ
T: 0131 273 4380
F: 0131 273 4381
enquiries@cfa-archaeology.co.uk
www.cfa-archaeology.co.uk

Client:
W N Thomson & Co on behalf of Mr & Mrs H. Jeffrey

Drawn by: CA	Checked: SW	Date: 26/11/20
Report No: 3990		Fig. No: 19-20



Fig. 21 - Building 3, Exterior south elevation with brick-built extensions



Fig. 22 - Building 3, Unit 30, living room and mullioned window

Project:
 Halls Farm Cottages, Nr Dunbar, East Lothian
 Basic Historic Buildings Survey



CFA ARCHAEOLOGY LTD
 The Old Engine House
 Eskmills Park
 Musselburgh
 East Lothian, EH21 7PQ
 T: 0131 273 4380
 F: 0131 273 4381
 enquiries@cfa-archaeology.co.uk
 www.cfa-archaeology.co.uk

Client:
 W N Thomson & Co on behalf of Mr & Mrs H. Jeffrey

Drawn by: CA	Checked: SW	Date: 26/11/20
Report No: 3990		Fig. No: 21-22



Fig. 23 - Building 3, Unit 32, kitchen and boarded window



Fig. 24 - Building 3, Unit 36, living room with fireplace and single window

Project:
Halls Farm Cottages, Nr Dunbar, East Lothian
Basic Historic Buildings Survey



CFA ARCHAEOLOGY LTD
The Old Engine House
Eskmills Park
Musselburgh
East Lothian, EH21 7PQ
T: 0131 273 4380
F: 0131 273 4381
enquiries@cfa-archaeology.co.uk
www.cfa-archaeology.co.uk

Client:
W N Thomson & Co on behalf of Mr & Mrs H. Jeffrey

Drawn by: CA	Checked: SW	Date: 26/11/20
Report No: 3990		Fig. No: 23-24

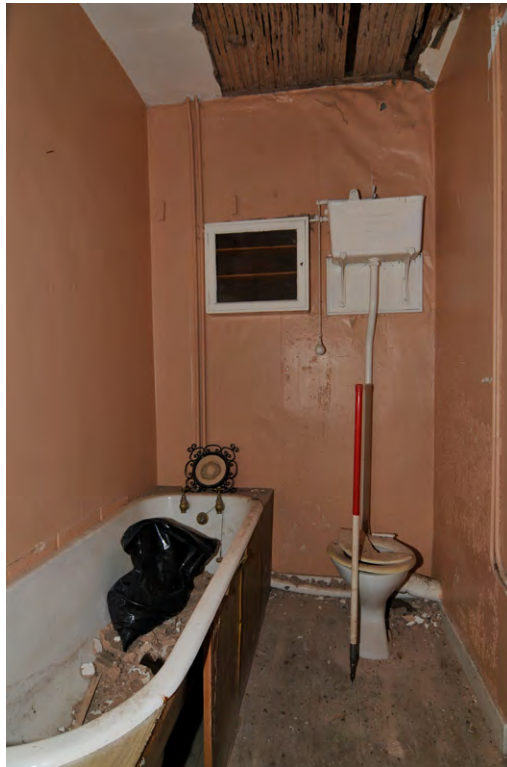


Fig. 25 - Building 3, Unit 39, bathroom with 20th century toilet cistern



Fig. 26 - Building 3, Unit 41, bedroom with cast-iron fireplace

Project:
Halls Farm Cottages, Nr Dunbar, East Lothian
Basic Historic Buildings Survey



CFA ARCHAEOLOGY LTD
The Old Engine House
Eskmills Park
Musselburgh
East Lothian, EH21 7PQ
T: 0131 273 4380
F: 0131 273 4381
enquiries@cfa-archaeology.co.uk
www.cfa-archaeology.co.uk

Client:
W N Thomson & Co on behalf of Mr & Mrs H. Jeffrey

Drawn by: CA	Checked: SW	Date: 26/11/20
Report No: 3990		Fig. No: 25-26



Fig. 27 - Building 3, Unit 42 bedroom with horse-shoe shaped fireplace



Fig. 28 - Building 3, Unit 43 kitchen with Belfast sink

Project:
Halls Farm Cottages, Nr Dunbar, East Lothian
Basic Historic Buildings Survey



CFA ARCHAEOLOGY LTD
The Old Engine House
Eskmills Park
Musselburgh
East Lothian, EH21 7PQ
T: 0131 273 4380
F: 0131 273 4381
enquiries@cfa-archaeology.co.uk
www.cfa-archaeology.co.uk

Client:
W N Thomson & Co on behalf of Mr & Mrs H. Jeffrey

Drawn by: CA	Checked: SW	Date: 26/11/20
Report No: 3990		Fig. No: 27-28



Fig. 29 - Building 3, Unit 44 cupboard



Fig. 30 - Building 3, Unit 45 cupboard

Project:
Halls Farm Cottages, Nr Dunbar, East Lothian
Basic Historic Buildings Survey



CFA ARCHAEOLOGY LTD
 The Old Engine House
 Eskmills Park
 Musselburgh
 East Lothian, EH21 7PQ
 T: 0131 273 4380
 F: 0131 273 4381
 enquiries@cfa-archaeology.co.uk
 www.cfa-archaeology.co.uk

Client:
W N Thomson & Co on behalf of Mr & Mrs H. Jeffrey

Drawn by: CA	Checked: SW	Date: 26/11/20
Report No: 3990		Fig. No: 29-30



Fig. 31 - Detached building (Unit 46) general view of its west side



Fig. 32 - Row of sheds (Unit 47) on the west side of the cottages

Project:
Halls Farm Cottages, Nr Dunbar, East Lothian
Basic Historic Buildings Survey



CFA ARCHAEOLOGY LTD
The Old Engine House
Eskmills Park
Musselburgh
East Lothian, EH21 7PQ
T: 0131 273 4380
F: 0131 273 4381
enquiries@cfa-archaeology.co.uk
www.cfa-archaeology.co.uk

Client:
W N Thomson & Co on behalf of Mr & Mrs H. Jeffrey

Drawn by: CA	Checked: SW	Date: 26/11/20
Report No: 3990		Fig. No: 27-28



Fig. 33 - Interior of one of the sheds (Unit 27)

Project:
 Halls Farm Cottages, Nr Dunbar, East Lothian
 Basic Historic Buildings Survey



CFA ARCHAEOLOGY LTD
 The Old Engine House
 Eskmills Park
 Musselburgh
 East Lothian, EH21 7PQ
 T: 0131 273 4380
 F: 0131 273 4381
 enquiries@cfa-archaeology.co.uk
 www.cfa-archaeology.co.uk

Client:
 W N Thomson & Co on behalf of Mr & Mrs H. Jeffrey

Drawn by: CA	Checked: SW	Date: 26/11/20
Report No: 3990		Fig. No: 29



HFCE_1



HFCE_2



HFCE_3



HFCE_4



HFCE_5



HFCE_6



HFCE_7



HFCE_8



HFCE_9



HFCE_10



HFCE_11



HFCE_12



HFCE_13



HFCE_14



HFCE_15



HFCE_16



HFCE_17



HFCE_18



HFCE_19



HFCE_20



HFCE_21



HFCE_22



HFCE_23



HFCE_24



HFCE_25



HFCE_26



HFCE_27



HFCE_28



HFCE_29



HFCE_30



HFCE_31



HFCE_32



HFCE_33



HFCE_34



HFCE_35



HFCE_36



HFCE_37



HFCE_38



HFCE_39



HFCE_40



HFCE_41



HFCE_42



HFCE_43



HFCE_44



HFCE_45



HFCE_46



HFCE_47



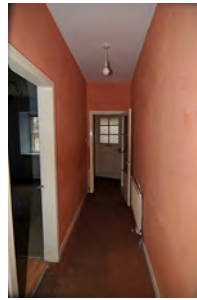
HFCE_48



HFCE_49



HFCE_50



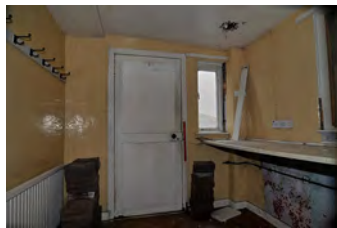
HFCE_51



HFCE_52



HFCE_53



HFCE_54



HFCE_55



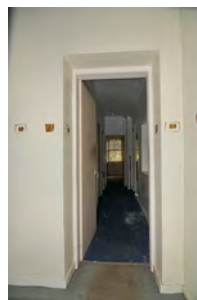
HFCE_56



HFCE_57



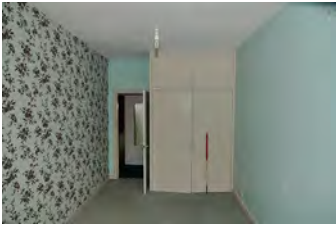
HFCE_58



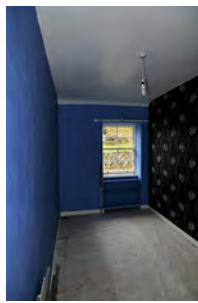
HFCE_59



HFCE_60



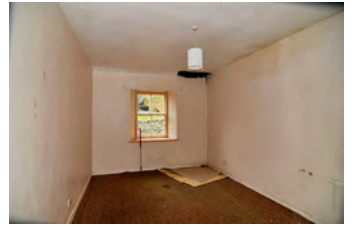
HFCE_61



HFCE_62



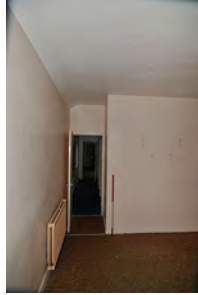
HFCE_63



HFCE_64



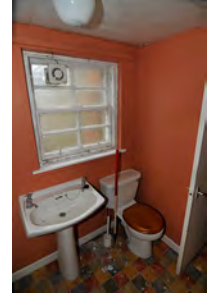
HFCE_65



HFCE_66



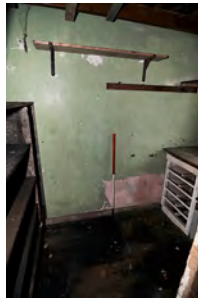
HFCE_67



HFCE_68



HFCE_69



HFCE_70



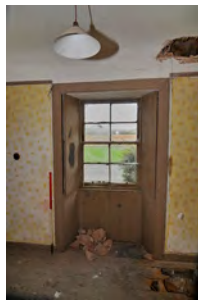
HFCE_71



HFCE_72



HFCE_73



HFCE_74



HFCE_75



HFCE_76



HFCE_77



HFCE_78



HFCE_79



HFCE_80



HFCE_81



HFCE_82



HFCE_83



HFCE_84



HFCE_85



HFCE_86



HFCE_87



HFCE_88



HFCE_89



HFCE_90



HFCE_91



HFCE_92



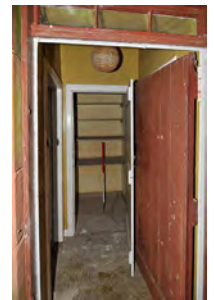
HFCE_93



HFCE_94



HFCE_95



HFCE_96



HFCE_97



HFCE_98



HFCE_99



HFCE_100



HFCE_101



HFCE_102



HFCE_103



HFCE_104



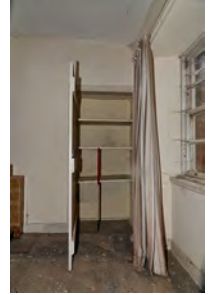
HFCE_105



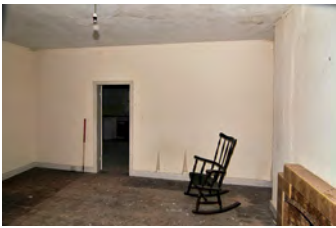
HFCE_106



HFCE_107



HFCE_108



HFCE_109



HFCE_110



HFCE_111



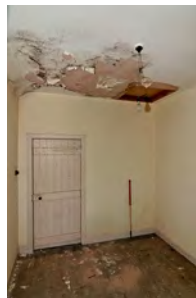
HFCE_112



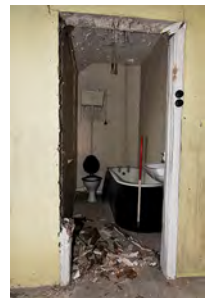
HFCE_113



HFCE_114



HFCE_115



HFCE_116



HFCE_117



HFCE_118



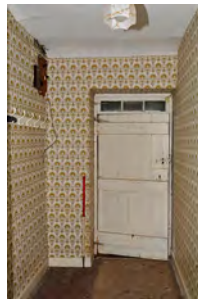
HFCE_119



HFCE_120



HFCE_121



HFCE_122



HFCE_123



HFCE_124



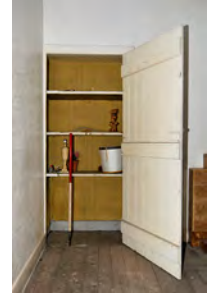
HFCE_125



HFCE_126



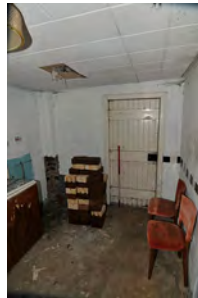
HFCE_127



HFCE_128



HFCE_129



HFCE_130



HFCE_131



HFCE_132



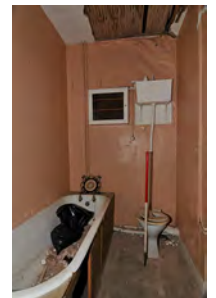
HFCE_133



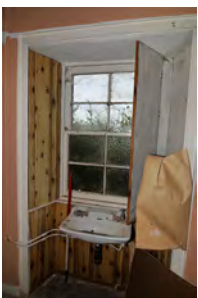
HFCE_134



HFCE_135



HFCE_136



HFCE_137



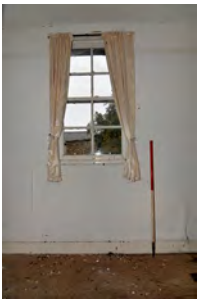
HFCE_138



HFCE_139



HFCE_140



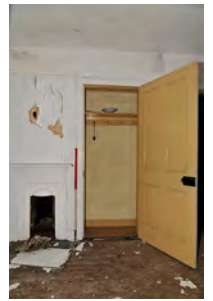
HFCE_141



HFCE_142



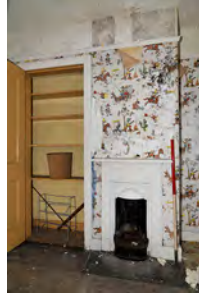
HFCE_143



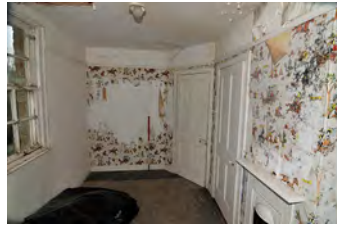
HFCE_144



HFCE_145



HFCE_146



HFCE_147



HFCE_148



HFCE_149



HFCE_150



HFCE_151



HFCE_152



HFCE_153



HFCE_154



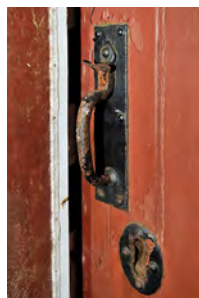
HFCE_155



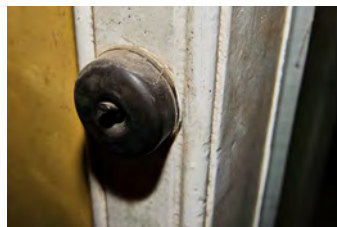
HFCE_156



HFCE_157



HFCE_158



HFCE_159



HFCE_160



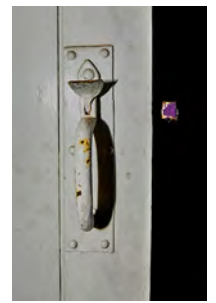
HFCE_161



HFCE_162



HFCE_163



HFCE_164



HFCE_165



HFCE_166



HFCE_167



HFCE_168



HFCE_169



HFCE_170



CFA ARCHAEOLOGY
www.cfa-archaeology.co.uk

HEAD OFFICE - Musselburgh

Old Engine House
Eskmills Park, Musselburgh
East Lothian, EH21 7PQ

t: +44 (0) 131 273 4380
e: enquiries@cfa-arch.co.uk

Leeds

Clayton Works Business Centre
Midland Road
Leeds, LS10 2RJ

t: +44 (0) 113 271 6060
e: yorkshire@cfa-arch.co.uk

Milton Keynes

Suite 11, Letchworth House
Chesney Wold, Bleak Hall
Milton Keynes, MK6 1NE

t: +44 (0) 1908 226 124
e: miltonkeynes@cfa-arch.co.uk

Carlisle

Warwick Mill Business Village
Warwick Bridge, Carlisle
Cumbria, CA4 8RR

t: +44 (0) 1228 564 531
e: cumbria@cfa-arch.co.uk

Sheffield

Office 5, Ecclesfield Business Centre
46 Stocks Hill, Ecclesfield
Sheffield, S35 9YT

t: +44 (0) 114 327 1108
e: sheffield@cfa-arch.co.uk

Leicester

Business Box
3 Oswin Road, Brailsford Industrial Estate
Leicester, LE3 1HR

t: +44 (0) 116 279 5156
e: leicestershire@cfa-arch.co.uk

Hertfordshire

Amwell House
9 Amwell Street, Hoddesdon
Hertfordshire, EN11 8TS

t: +44 (0) 845 017 9847
e: herts@cfa-arch.co.uk