

CFA ARCHAEOLOGY LTD

October 2008

Commissioned by Ochil Developments (UK) Ltd.

This document has been prepared in accordance with CFA standard operating procedures.

Author: Date

Approved by: Date

Draft/Final Report Stage: Draft

Authors: Chris O'Connell BA MA AIFA and Helena Gray MA

Illustrations: Karen Clarke BA MA MSc

Editor: Melanie Johnson MA PhD FSA Scot MIFA

CFA ARCHAEOLOGY LTD
The Old Engine House
Eskmills Business Park
Musselburgh EH21 7PQ

Tel: 0131-273-4380
Fax: 0131-273-4381
email: cfa@cfa-archaeology.co.uk

**gWest,
Kirkton Farm,
Blackford, Perth and Kinross.**

**Archaeological Excavation Golf Area P
(Houses)**

Report No. 1509

Contents

1.	Introduction	3
2.	Working Methods	4
3.	Archaeological Results	4
4.	Conclusions and Recommendations	12
5.	References	14

Appendices

1.	Context Register Houses 2, 4, 5 and 6	15
2.	Context Register House 3	38
3.	Photographic Register Houses 2, 4, 5 and 6	52
4.	Photographic Register House 3	62
5.	Field Drawing Register Houses 2, 4, 5 and 6	67
6.	Field Drawing Register House 3	73
7.	Sample Register Houses 2, 4, 5 and 6	76
8.	Sample Register House 3	80
9.	Finds Register	81

Illustrations (bound at rear)

Fig. 1	Golf Area P Site Location map
Fig. 2	Houses 2, 4, 5 & 6. Post-Excavation Plan
Fig. 3	House 3 Post-Excavation Plan

1. INTRODUCTION

1.1 General

- 1.1.1 This report presents the results of an archaeological excavation (Golf Area P (Houses)) undertaken by CFA Archaeology Ltd (CFA) at the location of the proposed gWest golf course, Blackford, Perthshire (NGR: NN 8996 1046 centred; Fig. 1). Ochil Developments (UK) Ltd commissioned the work.
- 1.1.2 A Written Scheme of Investigation (WSI) for the excavation was produced by CFA on behalf of Ochil Developments (UK Ltd). Perth and Kinross Heritage Trust (PKHT) agreed the WSI in advance.

1.2 Background

- 1.2.1 Prior to the excavation of Golf Area P, an archaeological evaluation was undertaken by CFA during September 2007 (O'Connell & Gray 2008) in which four areas of prehistoric archaeological activity were discovered. After the initial trial trenching PKHT required a further topsoil strip amounting to 1899m² (Houses 2, 4, 5 & 6 Area) and 908m² (House 3 Area).

2. WORKING METHODS

- 2.1 CFA Archaeology Ltd follows the Institute of Field Archaeologists' Code of Conduct, Standards and Guidance for Archaeological Excavations.
- 2.2. A 360°-tracked excavator, equipped with a smooth-bladed ditching bucket carried out the remsub-circular of topsoil under constant archaeological supervision
- 2.3 PKHT required 50% excavation of the archaeological features and 100% of roundhouses 3 and 5 and of any features containing artefacts or where a fuller understanding of features would require greater excavation. All features were cleaned and excavated by hand.
- 2.4 All excavation and on-site recording was carried out according to standard CFA procedures, principally by drawing, by photography and by completing standard CFA record forms. The limits of the excavation and the planning grid were surveyed using industry standard electronic surveying equipment.
- 2.5 Routine baulk samples were taken from features in order to be processed by wet sieving for the retrieval of environmental data, dateable material and artefacts. All artefacts retrieved were retained.

3. ARCHAEOLOGICAL RESULTS

3.1 General

- 3.1.1 Numbers in bold and parentheses refer to contexts, a full list of which is contained in Appendix 1.
- 3.1.2 This area contained five post-built roundhouses (Houses 2, 3, 4, 5 and 6) (Fig. 2) in close proximity to each other, and a suite of isolated archaeological features. Feature (005) was originally thought to be the heavily truncated remains of a roundhouse (House 1) which on subsequent excavation turned out to be a large pit. The houses are discussed individually from west to east, the sequence being House 4, 5, 2, 6 and then 3.

3.2 House 4

- 3.2.1 This house measured 10m by 12m. The outer wall of the house was defined by a partial ring groove on the north and north-east, which contained a series of postholes. Inside this was a concentric ring of postholes encircling a penannular ring-ditch with pits cut into its base. A possible partial inner ring of postholes was also present inside the ring-ditch. There were eight internal features including a central fire pit. All features within House 4 were sealed by a charcoal-rich deposit (010).
- 3.2.2 **Ring Groove.** The partially surviving ring groove (015) was present on the north and north-eastern side of the house and measured c. 0.3m wide by 0.2m deep. Within the ring groove were four postholes (119, 088, 092 and 013). These were of similar dimensions and form, ranging in size from 0.30m diameter by 0.07m deep to 0.40m diameter by 0.10m deep. The ring groove is interpreted as the foundation cut into which the non-load bearing curtain wall of the house would have been secured, with the four postholes being part of this construction.
- 3.2.3 **Posthole Rings.** An outer ring of 16 postholes (042, 098, 096, 100, 003, 121, 102, 106, 124, 111, 113, 115, 248 and 066) encircled the penannular ring-ditch (008). They were similar in form and ranged in size from 0.30m diameter by 0.1m deep to 0.3m diameter by 0.28m deep. The remains of a possible inner ring of postholes survived as an arc of four postholes (132, 104, 130 and 321) which were found on the inner western edge of the ring-ditch and range in size from 0.30m diameter by 0.1m deep to 0.45m by 0.50m by 0.30m deep. These postholes, outer and inner ring, are interpreted as the foundations for the load bearing posts supporting the ring beam onto which the pitched roof would have been fastened.
- 3.2.4 **Penannular Ring-Ditch and Entrance.** A penannular ring-ditch (008) which measured 2m wide by 0.4m deep was filled with two deposits. The lower fill of dark brown silt contained c.40% large stones (009), and the upper fill was a black charcoal-rich material (010). The terminal ends of the ring-ditch are orientated to the north-west. The break in the ring-ditch may be a possible entrance, although there is no evident porch or entrance structure visible in plan. If this was the entrance it would be unusual, as all other roundhouses excavated at gWest have had entrances orientated to the south-east. Although there is no obvious entrance structure to the south-east, it is possible that as the penannular ring-ditch (008) was shallow at the south-east (0.09m

deep) this would not have restricted access into the house, and the pit (036) may have been a foundation cut for an entrance post. Within the ring-ditch were eight pits (050, 055, 317, 319, 011, 058, 060 and 056) that ranged in size from 0.40m by 0.30m by 0.11m deep to 1.10m by 0.96m by 0.09m deep. These pits were cut into the subsoil (002) within the base of the ring-ditch and were sealed by the basal fill (010) within (008). There are a number of interpretations regarding the function of these internal ring-ditches, including; wear patterns from livestock, storage pits or a method to increase head room under the sloping eaves of the house (for discussions on this topic see Reynolds 1982, Kendrick 1995 and Pope 2007). Similar examples of ring-ditches with pits cut into them have been excavated at Douglasmuir (Kendrick 1995) where some of the pits were interpreted as structural and others where the function was undetermined.

- 3.2.5 **Internal Features.** The eight internal features (094, 136, 109, 117, 144, 134, 148 and 146) ranged in size from 0.11m by 0.12m by 0.07m to 2.30m by 1.70m by 0.34m deep. Pit (134) may have been a hearth because of the high quantity of charcoal within the fill (135) which also contained burnt bone, although there was no evidence of in situ burning in the subsoil (002). Features (148 and 146) are small stakeholes and maybe features related to the hearth architecture. The function of pits (094, 136, 144, 109) and (117) were not known.

3.3 House 5

- 3.3.1 This post-built house measured 9.5m by 11m. The features making up the house were heavily truncated which made the interpretation of these features difficult. The house was defined by a ring groove with an entrance orientated to the south-east. A partial ring of postholes was present as well as a partial ring-ditch and a number of internal features including a hearth.
- 3.3.2 **Ring Groove and Entrance.** The ring groove (192) was an intermittent feature, which was truncated on its north-eastern side. Its dimensions were c. 0.45m diameter by 0.3m deep. There was one posthole (195) within the ring groove which was interpreted as a foundation for one of the posts of the curtain wall. The entrance was present to the south-east and was defined by a pair of opposing postholes (153-265) cut at the terminal ends of the ring groove. The ring groove also widens at this point creating more space between the curtain wall and the posthole ring. The ring groove (192) cut a curvilinear feature (593) on its north-western side. The feature (593) was truncated and could only be seen in plan as a faint stain darker than the surrounding natural subsoil (002) and had a width of 0.30m. Feature (593) did not show any spatial relationship in plan with other features that was indicative of structural remains, and the function of the feature remains undetermined.
- 3.3.3 **Posthole Ring.** The degree of horizontal truncation and the concentration of postholes in the south-western quadrant of the house (Fig. 2) make the structural ring of postholes for the house hard to define. It is possible that the following sequence of twelve postholes represents the posthole ring (379, 199, 151, 252, 201, 206, 204, 214, 228, 230, 224 and 222) which ranged in size from 0.34m by 0.36m by 0.08m deep to 0.4m by 0.75m by 0.27m.

3.3.4 **Internal Features.** There were 21 internal features (150, 165, 167, 164, 193, 234, 236, 238, 244, 242, 216, 220, 218, 226, 190, 232, 240, 157, 267, 256 and 254) ranging in size from 0.10m diameter by 0.11m deep to 0.94m by 2.43m by 0.26m deep. There were three conjoining pits (150, 165 and 167) which measured 2.20m by 1.00m by 0.20m deep, 1.50m diameter by 0.24m deep and 2.40m by 1.00m by 0.19m, on the north-east side of the house. The pits formed a larger curvilinear feature similar in form to a ring-ditch. The majority of the internal features clustered on the western and southern side of the house, and showed no spatial pattern indicative of internal architecture. They varied in form, size and their fills. There was a large central pit (164), dimensions 1.2m by 2m by 0.26m deep, which contained fragments of pottery, but no evidence as to its function.

3.4 House 2

3.4.1 This was a post-built house measuring c.7m (east to west) by c.9m (north to south). It had an outer and an inner posthole ring. The entrance was to the south-east and was framed by four large postholes probably representing the porch construction. There were internal features throughout and two possible partial ring-ditches, one on the west and the other on the east side of the house.

3.4.2 **Posthole Rings and Entrance.** Due to the concentration and number of internal features, it was difficult to determine which were the posthole foundations for the structural posts that would have held the ring beam upon which the pitched roof would have been fastened. The possible outer ring comprised thirteen postholes (405, 281, 277, 271, 269, 454, 365, 359, 384, 337, 339, 343 and 297) and ranged in size from 0.31m diameter by 0.09m deep to 0.87m by 0.53m by 0.30m deep. The inner ring comprised thirteen postholes (421, 291, 383, 458, 456, 428, 432, 460, 357, 355, 430, 448, and 399) which ranged in size from 0.30m diameter by 0.13m deep to 0.63m by 0.94m by 0.2m deep. The entrance faced the south-east and was defined by two pairs of opposing postholes representing a trapezoidal porch construction (405-297 and 421-399). This would make the width of the entrance 3m (between 421-399) narrowing to 1m (between 405-297). A further two features (255 and 293) were also interpreted as part of the western side of the porch, although they did not have an opposed pair on the east side of the porch. A linear feature (394) linked posthole (421) and (399), and may represent some further architectural elaboration to the entrance. A shallow scoop (490) between postholes (405 and 297) is thought to be a result of wear created by movement into and out of the house.

3.4.3 **Internal Features.** There were twenty-eight internal features ranging in size from 0.16m diameter by 0.06m deep to 1.40m by 3.00m by 0.28m. There were two large curvilinear pits (377 and 417). The western curvilinear ditch (377) measured c. 3.7m by 1.2m by 0.2m deep and was filled with two deposits (378 and 464). The eastern curvilinear pit (417) measured c. 3.5m by 1.3m by 0.24m deep and was filled with a single deposit (416). Both these pits contained pottery. The size and form of these pits is indicative of truncated ring-ditches which have been variously interpreted as storage pits or as a means of increasing vertical space under the eaves of the roof (for discussions on this topic see Reynolds 1982, Kendrick 1995 and Pope 2007). There were four postholes (418, 473, 475 and 452) cut into the bases of (377) and (417), the function of which could not be determined through excavation. There were nineteen features within the internal space of the house (353, 469, 467, 462, 465, 471, 450,

446, 444, 477, 426, 423, 479, 438, 436, 434, 401, 403 and 440). Feature (426) may be the truncated remains of the western ring-ditch (377). The remaining features also did not display any physical or spatial relationships with each other or other features which were indicative of their function.

3.5 House 6

3.5.1 This post-built house had a diameter of c. 5.5m. It was heavily truncated making the interpretation of the structure difficult. It appears to have two posthole rings, with a partial ring-ditch on its eastern side replacing the corresponding section of inner posthole ring. A cluster of features to the south-east may be the remains of the porch structure and entrance. The features of House 6 were sealed by a deposit of charcoal-rich black silt (594).

3.5.2 **Posthole Rings and Entrance.** The house has an inner and outer ring of postholes. The outer ring was possibly formed by c. thirteen postholes (559, 581, 579, 543, 573, 494, 561, 547, 519, 504, 502, 488 and 509) and ranged in size from 0.20m diameter by 0.08m deep to 0.63m by 0.94m by 0.2m deep. The inner ring comprised ten postholes (553, 507, 534, 536, 538, 525, 530, 545, 555, 567 and 571) which ranged in size from 0.50m diameter by 0.18m deep to 0.45m by 0.58m by 0.28m deep. These two rings of postholes are interpreted as the foundations for the structural posts upon which the ring beam would have been fixed in order to secure the pitched roof. There was a break in the posthole ring at the south-east that may represent the entrance to the house and a cluster of five pits that may represent the architecture of a porch and entrance (587, 577, 592, 589 and 585); these features ranged in size from 0.30m by 0.28m by 0.08m deep to 0.50m by 1.31m by 0.15m deep.

3.5.3 **Internal Features.** There were twelve internal features which ranged in size from 0.20m by 0.25m by 0.15m deep to 3.5m by 1m by 0.15m deep. Seven of these features were situated between the putative outer and inner posthole ring and displayed no physical evidence or spatial pattern indicative of their function (515, 527, 517, 532, 519 and 565), four were found within the internal space of the house (521, 523, 551 and 557), with (521) cutting (523) and interpreted as a replacement post, and a large curvilinear pit (575) interpreted as a truncated ring-ditch similar to those found in Houses 2 and 5.

3.5.4 **External Features within the Excavation Area of Houses 4, 5, 2 and 6 (Fig. 2).** There were 77 external features across the site. They were classified into three groups;

- I. Six large elongated pits (005, 046, 086, 128, 303 and 486) which ranged in size from 1.12m by 2.22m by 0.20m deep to 1.60m by 5.54m by 0.55m. The function of these pits could not be determined through excavation. The proximity of the pits to Houses 4, 5 and 2 is a possible indication that these features relate to household activities such as storage.
- II. Circular and sub-circular pits. These seventy features make up the majority of the external features within the excavation area. They can be further classified into the following groupings:
 - two south of House 4 (040 and 038);

- seventeen to the east of House 4 (**036, 034, 032, 021, 019, 023, 017, 028, 030, 161, 026, 171, 173, 175, 177, 179 and 181**); six of these features, similar in size and form, were aligned in a straight line running north-west to south-east (**181, 179, 177, 175, 173, and 171**). It is possible that they represent an external fence line or similar division between Houses 4 and 5;
- three to the south of House 5 (**155, 138 and 413**);
- ten to the north of House 5 (**068, 080, 076, 078, 082, 074, 072, 084, 263, 261, 112, 381, 126 and 267**);
- five to the south of House 2 (**409, 388, 386, 392 and 390**);
- six to the west of House 2 (**281, 277, 275, 273, 271 and 269**);
- fifteen to the north of House 2 (**285, 299, 301, 311, 313, 315, 365, 333, 345, 347, 454, 349, 351, 363, and 361**);
- eight to the east of House 2 (**442, 341, 331, 329, 327, 323, 307, 481 and 305**);
- and four to the south of House 6 (**513, 498, 511 and 500**).

III. One curvilinear feature north of House 5 (**593**) which was cut by (**192**), making (**192**) a later feature.

3.5.5 The spatial distribution of these features with the exception of the six features (**181, 179, 177, 175, 173, and 171**) discussed above, show no relationships indicative of structures.

3.6 House 3 (Fig. 3)

3.6.1 This house was heavily truncated, particularly on its northern side where features would have been lost due to erosion downslope, making the interpretation of the house difficult. There were at least two phases of features within this area. The earliest phase (Phase 1) is represented by a curvilinear cut present to the east, south-east and south-west (**073 and 114**). This feature was cut by two pits, (**084**) and (**112**). These two pits were interpreted as being part of a series of pits present on the west, south and east of the excavation area. This arc of pits represents Phase 2. There were also other probable architectural components within the excavation area:

Phase 1

- Curvilinear cut (**073 and 114**)

Phase 2

- Outer arc of pits

Unphased

- Outer ring groove
- Inner ring groove
- Posthole ring and entrance
- Features internal to the house
- Isolated features

3.6.2 The architectural components that can be assigned to the house structure with certainty are the posthole ring and entrance and features internal to the house. The relationships between the other architectural components and the house were not clear, but it is probable that either the outer or inner ring grooves were the remains of the foundations for a curtain wall, with the vestigial remains of two ring grooves

suggestive of a phase of re-building or repair (See Appendix 2 for House 3 Context Register).

- 3.6.3 **Curvilinear Cut.** The truncated intermittent remains of a curvilinear feature, present on the south-east and the west of House 3 (**073** and **114**), measured 0.2m by 32.00m (surviving length) by 0.10m deep. There was one feature within the curvilinear feature (**135**) which was interpreted as a possible posthole. The curvilinear feature (**073/114**) was cut by pits (**112** and **084**) making (**073/114**) earlier than (**112** and **084**).
- 3.6.4 **Outer Arc of Pits.** A series of fifteen pits formed an arc on the south and south-west (**071, 084, 137, 144, 132, 210, 228, 278, 226, 244, 112, 124, 122, 118** and **120**) which ranged in size from 0.50m by 0.40m by 0.31m deep to 1.80m by 2.00m by 0.4m deep. Pit (**144**) contained Bronze Age prehistoric pottery and pit (**228**) was cut by a later feature (**278**). One pit (**071**) abutted the palisade and (**084**) and (**112**) cut the palisade, making these features later. If all these pits belonged to the same phase of construction, then by extension they must all have been later features than the curvilinear feature (**073/114**).
- 3.6.5 **Outer Ring Groove.** A possible ring groove was recorded situated between the outer arc of pits and the inner ring groove. The ring groove was represented by a segment of a curvilinear cut, and probable postholes following the same alignment. The outer ring groove was concentric to both the outer arc of pits and the posthole ring of House 3. The features were shallow as a result of heavy truncation, resulting in an intermittent feature present to the south and east. The outer ring groove was represented by an arc of seven features (**106, 110, 218, 027, 025, 033, and 031**) which ranged in size from 0.50m diameter by 0.14m deep to 0.34m by 0.30m by 0.11m deep. Six of these features were truncated pits that were aligned with a segment of a curvilinear cut (**106**). They were interpreted as truncated postholes cut into the ring groove (**106**) into which the posts for the non load-bearing curtain wall would have been secured.
- 3.6.6 **Inner Ring Groove.** The inner ring groove was represented by segments of linear features (**089, 204** and **283**) which measured 6m by 0.2m by 0.1m deep, 1.3m by 0.15m by 0.1m and 1.5m by 0.1m by 0.02m deep respectively. There were nine probable postholes found in association with the inner ring groove (**108, 110, 190, 192, 194, 019, 037, 035, and 039**) ranging in size from 0.29m by 0.31m by 0.08m deep to 0.40m by 0.48m by 0.15m deep. These features were interpreted as the remains of postholes cut into the ring groove into which the posts for the non load-bearing curtain wall would have been secured.
- 3.6.7 **Posthole Ring and Entrance.** Eleven postholes make up the ring of postholes which were the foundations for the structural, load-bearing posts of the house (**003, 005, 007, 017, 148, 051, 059, 061, 100** and **067**) which ranged in size from 0.23m by 0.24m by 0.11m deep to 0.80m diameter by 0.39m deep. The entrance to the house was not readily discernible from the plan (See Fig. 3). If, as with Houses 2 and 6 (this report), the entrance was orientated to the south-east then possible entrance structures may be represented by paired postholes (**003-079** or **079-067**).
- 3.6.8 **House 3 Internal Features.** There were twenty-three internal features (**047, 049, 055, 063, 065, 095, 082, 079, 015, 011, 013, 041, 077, 075, 069, 087, 085, 082, 079, 104, 091, 102, 003** and **098**), which ranged in size from 0.20m diameter by 0.10m

deep to 4.5m by 1.8m by deep. Feature (085) contained prehistoric pottery, burnt bone and charcoal-rich deposits, and was interpreted as a possible hearth. Another large pit was found on the south-west side of the house (015). This pit was heavily truncated with its possible shallow remains extended to the west, which would then mirror the pit (053) in its position within the house. These pits were interpreted as the truncated remains of a ring-ditch. The other nineteen features were distributed across the internal space of the house. No spatial pattern could be seen in the plan of these features which was indicative of structures, although it is likely that they represent the foundations for internal divisions.

- 3.6.9 **Isolated Features.** There were nineteen isolated features (279, 196, 198, 206, 202, 188, 190, 231, 262, 152, 146, 240, 238, 242, 152, 043, 045, 246 and 248) that were bounded by the curvilinear cut (073/114) which ranged in size from 0.23m by 0.30m by 0.09m deep to 1.00m by 0.60m by 0.08m deep. The features do not show any spatial patterning indicative of structural components and there was no evidence from excavation as to the function of these features. There were thirty-four isolated features (281, 266, 268, 270, 176, 274, 186, 180, 182, 178, 162, 164, 256, 273, 126, 254, 168, 160, 170, 222, 220, 252, 214, 236, 150, 166, 172, 154, 156, 158, 184, 135, 142 and 139) ranging in size from 0.12m diameter by 0.07m deep to 1.57m by 2.87m by 0.20m deep. The majority of these features were sub-circular pits, with the exception of (281 and 284) which are two segments of a linear feature. The function of these features could not be determined by excavation, and there is no spatial patterning in plan indicative of structures.

3.7 Finds, Melanie Johnson

- 3.7.1 An assemblage of finds including pottery, bone, stone objects and cannel coal was recovered from the excavations. A full list by context is provided in Appendix 9.

House 2

- 3.7.2 Pieces of cannel coal were recovered from House 2 (contexts 417, 464 and 468); most of these constituted unworked pieces but three pieces from 417 were fragments of an unfinished object which was partly polished and had likely broken before it was completed.
- 3.7.3 A large assemblage (6189g) of Bronze Age prehistoric pottery was found. This includes rim and base sherds and a significant quantity was found in context 416 (3422g of the total).
- 3.7.4 Two pieces of unworked quartz (378, 487), a piece of grey flint (468) and a possible pivot stone (416) were also recovered. A small quantity of burnt bone (5g) was found.

House 3

- 3.7.5 There was 1210g of Bronze Age prehistoric pottery from contexts associated with this house, much of which was found during surface cleaning.
- 3.7.6 In addition, a small piece of vitrified material was found in (393) and a stone spindle whorl and a stone loom weight from surface cleaning.

House 4

- 3.7.7 The only finds were 2184g of Bronze Age prehistoric pottery from a variety of contexts and some pieces of unworked white quartz (**163** and from cleaning). A small quantity of burnt bone (6g) was found.

House 5

- 3.7.8 A small assemblage was recovered, comprising a piece of bone from **215**, a piece of flint, a possible hammerstone and pebbles/chips of unworked white quartz (all from **169**), and 539g of Bronze Age prehistoric pottery from contexts associated with the structure. A small quantity of burnt bone (2g) was found.

House 6

- 3.7.9 The only finds were 72g of Bronze Age prehistoric pottery, which includes a base sherd, recovered from (**508**). A small quantity (21g) of burnt bone was found.

External features

- 3.7.10 Finds included 179g of prehistoric pottery from (**086** and **413**), some orange flint also from (**086**), and a broken probable loom weight from the palisade fill. A small quantity (12g) of burnt bone was found.

4. CONCLUSIONS AND RECOMMENDATIONS

- 4.1 Five post-built Bronze Age prehistoric roundhouses were excavated in this area, along with 117 external features including large elongated pits, circular and sub-circular pits and linear features.
- 4.2 House 4. This house, measuring 10m by 12m, was defined by a ring groove (**015**), which was interpreted as a foundation cut for the non load-bearing curtain wall. The structural load-bearing component of this house was a concentric outer ring and partial inner ring of postholes, into which the upright posts upon which the ring beam would be supported would have been secured, which in turn would support the pitched roof. The house had a penannular ring-ditch (**008**) with terminal ends to the north-west; it is not clear if this formed the house entrance. There are various interpretations for the function of these large internal pits including storage (for a fuller discussion Reynolds 1982, Kendrick 1995 and Pope 2007). There were ten other internal features including a central fire pit (**134**). All features within House 4 were sealed by a charcoal-rich deposit (**010**).
- 4.3 House 5. This was post-built house which measured 9.5m by 11m. It was defined by a ring groove (**192**) and partial ring of postholes. The ring groove was interpreted as the foundation for the curtain wall, and the postholes as foundations for the house's structural posts. There were 24 internal features which varied in size and form and expressed no spatial patterning indicative of internal architecture, although they are likely to be the vestigial remains of internal divisions and internal architectural details.
- 4.4 House 2. This was a post-built house measuring c. 7m by 9m. It had outer and inner structural posthole rings. The entrance was to the south-east and was framed by four large paired postholes (**405-297** and **421-399**) probably representing the porch construction. There were internal features throughout and two curvilinear ditches; one on the west (**377**) and the other on the east side of the house (**417**). The function of these internal curvilinear pits has been discussed elsewhere (see Para 4.3).
- 4.5 House 6 was a post-built house, diameter c. 5.5m, with an internal curvilinear pit on its eastern side (see Para 4.3 for discussion on internal pits). It had a double ring of structural postholes which would have supported a ring beam, to which the pitched roof would have been fastened. It was heavily truncated making the identification of the entrance unclear. The posthole rings and internal features were sealed by a deposit of charcoal-rich black silt (**594**).
- 4.6 House 3. This area had two phases. Phase 1 is represented by the remains of a curvilinear feature. This feature was cut by two pits which were part of an outer arc of large pits, Phase 2. There were seven architectural components recognised during the excavation;

Phase 1

- Curvilinear cut (**073** and **114**)

Phase 2

- Outer arc of pits

Unphased

- Outer ring groove
- Inner ring groove
- Posthole ring and entrance
- Features internal to the house
- Isolated features

- 4.7 Of these seven components only two can be assigned to House 3 with certainty, the posthole ring and entrance and the features internal to the house. Although it is likely that the ring grooves represented a re-building or repair phases to the outer curtain wall of the house, there was no physical relationship between the ring grooves, the outer arc of pits and the house (represented by the posthole ring, entrance and internal features), that enabled an interpretation of the phasing between these components.
- 4.8 House 3 was a round post-built house, diameter c. 6m. The house was defined by a single ring of posts. The entrance to the house could not be determined, but probably existed to the south-east of the house as it did with Houses 5, 2 and 6. There was a suite of features within the internal space of the house.
- 4.9 There were nineteen isolated features enclosed by the curvilinear feature **(073/144)**. There was no physical or spatial evidence as to their function.
- 4.10 There were 114 isolated features across the excavation area. There was no physical or spatial evidence as to their function.
- 4.11 A programme of post-excavation analyses and reporting will be required based on the results of this excavation. The project design and costing for this are supplied under separate cover.
- 4.12 The project archive, comprising all CFA record sheets, maps and reports, will be deposited with the National Monuments Record of Scotland (NMRS) and copies of reports will be lodged with Perth and Kinross Heritage Trust.

5. REFERENCES

O'Connell, C & Gray, H 2008. gWest, Kirkton Farm, Blackford, Perth and Kinross. Archaeological Evaluation Phase 2. CFA Report No. 1507.

Kendrick, J 1995. 'Excavation of a Neolithic enclosure and an Iron Age settlement at Douglasmuir, Angus' *Proc Soc Antiq Scot* 125: 29-67.

Pope, R 2007. 'Ritual and the roundhouse: a critique of recent ideas on the use of domestic space in later prehistory' In 'The Early Iron Age in Britain and the Near Continent' Eds Haselgrove C & Pope R. Oxbow Books.

Reynolds D, M 1982. 'Aspects of later prehistoric timber construction in south-east Scotland'. In 'Later Prehistoric Settlement in South-East Scotland' University of Edinburgh Department of Archaeology Occasional Paper No 8.

APPENDIX 1: Context Register: Houses 2, 4, 5 & 6

Context No.	Feature	Context type	Width / Diam (m)	Length (m)	Depth (m)	Description of Context
001		Topsoil				Loose mid-dark grey brown sandy silt. 1% small sub-rounded to sub-angular inclusions
002		Subsoil				Firm-compact yellowish orange silty sands and gravels
003	House 4	Cut of posthole	0.29	0.31	0.21	Sub-circular posthole with steep sides and concave base
004	House 4	Fill of posthole [003]				Loose greyish brown sandy silt containing metal working mould
005	Isolated feature	Cut of pit	1.60	5.54	0.55	Curvilinear feature with steeply sloping sides and flat base, aligned WSW-ENE
006	House 4	Fill of pit [005]				Loose mid greyish brown silt with 1% small sub-rounded stones, 10% medium-very large sub-angular and angular boulders
007	House 4	Fill of pit [005]				Primary fill of pit [005]
008	House 4	Cut of penannular ring-ditch	2.0	1.8-2.2	0.32-0.09	Penannular feature with sloping sides and flat base
009	House 4	Upper fill of ditch [008]				Firm dark grey black silt, 2% small stones
010	House 4	Lower fill of ditch [008]				Firm dark brown silt, 40 % large stone
011	House 4	Cut for a post hole	0.32	0.3	0.25	Sub-circular posthole with vertical sides and flat base
012	House 4	Fill of posthole [011]				Loose dark brown grey silt
013	House 4	Cut of posthole	0.4		0.2	Circular post hole with steep sides and flat base, within construction gully [015]
014	House 4	Fill of posthole [013]				Firm dark brown silt, similar to fill of construction gully
015	House 4	Cut of ring groove	0.2		0.2	Circular feature with vertical sides and flat base, links a series of postholes. Possibly a construction cut for a fence?
016	House 4	Fill of ring groove				Firm dark brown silt
017	House 4	Cut of posthole	0.32	0.34	0.06	Circular posthole with sloping sides and flat base, just south of large pit [046], possibly support post for small structure
018	House 4	Fill of posthole				Loose light brown sandy silt with charcoal inclusions and a few small stones
019	House 4	Cut of posthole	0.4		0.06	Circular posthole with sloping sides and flat-slightly curved base
020	House 4	Fill of a posthole				Loose greyish brown sandy silt
021	House 4	Cut of posthole	0.2		0.1	Circular posthole with steep sloping sides and concave base, related to [030] and [019]?
022	House 4	Fill of posthole				Loose greyish brown sandy silt, similar fill to other postholes in area [030] and [019]
023	House 4	Cut of posthole	0.25		0.2	Circular posthole with steeply sloping sides and concave base, just to E of pit [046] possible support post

Context No.	Feature	Context type	Width / Diam (m)	Length (m)	Depth (m)	Description of Context
024	House 4	Cut of posthole	0.25		0.2	Loose greyish brown sandy silt, charcoal inclusions
025	House 4	Packing stones in posthole [023]	0.1		0.19	Large packing stones, actual post probably removed , not burnt in-situ
026	House 4	Cut of posthole	0.7		0.28	Circular posthole with steep sloping sides and V shaped base, several other small pits in close proximity
027	House 4	Fill of posthole [026]				Loose dark brown sandy silt, modern pottery in top of fill
028	House 4	Cut of posthole	0.6		0.14	Circular posthole with curved sides and flat base, part of a cluster of postholes near baulk at NE of house 4
029	House 4	Fill of posthole [028]				Loose greyish brown sandy silt, similar to other postholes in area
030	House 4	Cut of posthole	0.2		0.08	Circular posthole with steep sides and concave base, possibly a stakehole, in close proximity to several large pits
031	House 4	Fill of posthole [030]				Loose greyish brown sandy silt
032	House 4	Cut of posthole	0.5		0.14	Circular posthole with sloping sides and concave base
033	House 4	Fill of posthole [032]				Loose greyish brown sandy silt
034	House 4	Cut of a posthole	0.45		0.9	Circular posthole with steeply sloping sides and flat base, NE of house 4
035	House 4	Fill of posthole [035]				Loose greyish-brown sandy silt, contained large stone
036	House 4	Cut of small pit	1.4		0.18	Sub-circular feature with sloping sides and flat base with curved edges, just to the E of house 4, very close to the baulk and several small postholes
037	House 4	Fill of pit [036]				Loose greyish brown sandy silt with large stones and charcoal, possible storage pit associated with house 4?
038	House 4	Cut of small posthole	0.33		0.04	Circular posthole with sloped sides and flat base, to E of house, similar to postholes to N of house [030] [019]
039	House 4	Fill of posthole [038]				Loose greyish brown sandy silt
040	House 4	Cut of posthole	0.63		0.12	Circular posthole with gradually sloping sides and flat base
041	House 4	Fill of posthole [040]	0.63		0.12	Loose greyish brown stony silt with several larger stones
042	House 4	Cut of posthole	0.5		0.1	Circular posthole with gradually sloping sides and flat/irregular base to SE of house 4
043	House 4	Fill of posthole [042]				Loose light brown gravely silt
044	House 4	Cut of posthole	0.3		0.1	Sub-circular posthole with flat base on S side of ring-ditch, very truncated
045	House 4	Fill of posthole [044]				Loose dark brown grey silt
046	House 4	Cut of ditch	3.5	0.85	0.22	Sub-circular feature with steep sloping sides and flat base, several post holes in close proximity which may have been supports

Context No.	Feature	Context type	Width / Diam (m)	Length (m)	Depth (m)	Description of Context
047	House 4	Fill of pit [046]				Loose greyish brown sandy silt with charcoal inclusions, possible storage pit related to house 4
048	House 4	Upper fill of ditch [008]				Same as [009], Loose mid dark grey sandy silt with 3-4% charcoal chunks and flecks, 1-2% small sub-rounded stones, fairly homogenous, probably post-abandonment infilling
049	House 4	Lower basal fill of ditch (049) Slot 2				Loose-firm mid-dark brown silt with 1% charcoal flecks, probably represent silting up of depression in ditch or a cut feature
050	House 4	Cut for posthole	0.4	0.3	0.11	Sub-circular posthole with sloping sides and flat base, aligned S-N, within terminal end
051	House 4	Fill of posthole [050]				Loose mid brownish grey silt with 1% charcoal patches and flecks and 2% small sub-rounded stones, same as upper layer of [008]
052	House 4	Fill of pit [008]				Stones in lower fill (010) of ditch [008]
053	House 4	Cut of ring-ditch, Slot 1	0.3		0.2	Steep sided
054	House 4	Secondary fill of [008] Slot 2				Firm dark grey slightly clayey silt with 1-2% charcoal flecks and daub, probably destruction layer when house first collapsed in
055	House 4	Cut for pit at terminal end of gully, Slot 2	0.6	0.4	0.1	Sub-circular feature with sloping sides and flat base, aligned SW-NE
056	House 4	Cut of pit, Slot 4	1.1	0.96	0.09	Sub-circular feature with slightly sloping sides and flat base
057	House 4	Fill of pit [056]				Loose, mid-dark brown and sandy with stones
058	House 4	Cut of pit, Slot 4	0.44	0.76	0.25	Irregular/ Sub-circular posthole with sloping sides and concave base
059	House 4	Fill of posthole in Slot 4				Loose, brown and sandy with 1 big stone
060	House 4	Cut of posthole	0.57	0.6	0.11	Sub-circular/irregular feature with sloping sides and slightly concave base
061	House 4	Fill of posthole				Fill of posthole [060]
062						UNASSIGNED
063						UNASSIGNED
064	House 4	Fill of [008]				Continuation of (009) in Slot 4
065	House 4	Fill of [008]				Continuation of (010) in Slot 4
066	House 4	Cut of posthole	0.3		0.28	Circular posthole in Slot 1 with vertical sides and conical base
067	House 4	Fill of posthole [066]				Loose dark brown grey silt
068	Isolated feature	Cut of a posthole	0.27		0.06	Circular posthole with sloping sides and concave base, heavily truncated
069	Isolated feature	Fill of posthole [068]				Loose dark brown gritty silt
070	Isolated feature	Cut of large isolated pit/ posthole	0.5		0.22	Circular feature with sloping sides and concave base
071	Isolated	Fill of pit/posthole				Moderately compacted mid brown silt

Context No.	Feature	Context type	Width / Diam (m)	Length (m)	Depth (m)	Description of Context
	feature					with occasional charcoal flecks
072	Isolated feature	Cut of posthole	0.31		0.19	Circular posthole with sloping sides and concave base, 1 of 5 (with [074] [078] [080]) forming an arc- truncated remains of possible round house
073	Isolated feature	Fill of posthole [073]				Moderately compacted blackish brown sandy silt with occasional charcoal flecks and burnt bone
074	Isolated feature	Cut of pit	0.58		0.06	Circular feature with gently sloping sides and flat base aligned E-W
075	Isolated feature	Fill of pit [074]				Moderately compacted blackish brown sandy silt with occasional charcoal flecks
076	Isolated feature	Cut of posthole	0.3		0.07	Circular posthole with sloping sides and concave base, possibly very truncated remains of internal feature of round house
077	Isolated feature	Fill of posthole [076]				Moderately compacted mid brown silty sand with occasional charcoal flecks
078	Isolated feature	Cut of posthole	0.23		0.1	Circular posthole with concave sides and base
079	Isolated feature	Fill of posthole [078]				Moderately compacted mid brown silty sand with occasional charcoal flecks
080	Isolated feature	Cut of pit/posthole	0.35		0.13	Circular posthole with sloping sides and concave base
081	Isolated feature	Fill of pit/ posthole				Moderately compacted mid brown gravely silt with occasional charcoal flecks
082	Isolated feature	Cut of posthole	0.26		0.08	Ovoid posthole with concave sides and base
083	Isolated feature	Fill of posthole [082]				Moderately compacted blackish brown sandy silt with occasional charcoal flecks
084	Isolated feature	Cut of posthole	0.4		0.09	Circular posthole with sloping sides and flat base, internal feature of very truncated roundhouse
085	Isolated feature	Fill of posthole [084]				Moderately compacted mid brown sandy silt containing sandstone post pad
086	Isolated feature	Cut of ring-ditch	1	2.81	0.11	Rectilinear feature with gently sloping sides and flat base, ring-ditch of very truncated roundhouse
087	Isolated feature	Fill of ring-ditch [087]				Moderately compacted mid brown sandy silt with occasional charcoal fragments and burnt bone
088	House 4	Cut of posthole	0.3	0.4	0.2	Sub-circular posthole with steep sides and conical base, a terminal end to E of construction groove [015]
089	House 4	Fill of posthole [088]				Firm-loose dark brown silt
090	House 4	Cut of posthole	0.4		0.1	Round posthole with steep sides and concave base, part of series of small postholes linked by gully
091	House 4	Fill of posthole [090]				Loose dark brown silt with possible packing stones
092	House 4	Cut of posthole	0.35		0.2	Sub-circular posthole with steep sides and concave base

Context No.	Feature	Context type	Width / Diam (m)	Length (m)	Depth (m)	Description of Context
093	House 4	Fill of posthole [092]				Loose-firm dark brown silt
094	House 4	Cut of posthole	0.38	0.4	0.24	Sub-circular posthole with steep sloping sides and flat base, aligned NW-SE, just inside gully [015] probably structural post for roof
095	House 4	Fill of posthole [094]				Loose-firm mid greyish brown slightly sandy silt with >1% angular and sub-angular stones and occasional flecks, fairly homogenous probably one rapid filling event
096	House 4	Cut of posthole	0.4	0.51	0.08	Circular posthole with sloping sides and irregular/flat base
097	House 4	Fill of posthole [096]				Loose greyish brown sandy silt
098	House 4	Cut of posthole	0.24	0.26	0.03	Circular posthole with eroded sides and flat base, 1 of 5 similar postholes in close proximity forming small structure
099	House 4	Fill of posthole [098]				Loose dark grey sandy silt
100	House 4	Cut of posthole	0.25	0.33	0.1	Sub-circular posthole with steeply sloping sides and concave base
101	House 4	Fill of posthole [100]				Loose greyish brown sandy silt
102	House 4	Cut of posthole	0.28	0.3	0.16	Circular posthole with steep sides and concave base
103	House 4	Fill of posthole [102]				Loose greyish brown sandy silt
104	House 4	Cut of post hole	0.3	0.3	0.3	Round posthole with vertical sides and flat base, in Slot 3 on inner side of [008]
105	House 4	Fill of posthole				Probably same as baulk fill 123(010) in Slot 1
106	House 4	Cut of posthole	0.35	0.4	0.2	Circular posthole with steep sides and concave base
107						Fill of posthole [106], <324>
108						Packing stones in posthole [106]
109	House 4	Cut of posthole	0.56	0.57	0.32	Posthole with steeply sloping sides and slightly concave base, adjacent to [111], possibly forming entrance way to ring-ditch house
110	House 4	Fill of posthole				Loose grey and mottled black brown with 1% small to medium sub-rounded stones and charcoal flecks and burnt bone
111	House 4	Cut of posthole	0.3	0.33	0.19	Sub-circular posthole with steep sloping vertical sides and flat base, probably forming entrance to ring-ditch house
112	House 4	Fill of posthole [112]				Loosely compacted mid-dark grey brown slightly sandy silt, <1% small sub-rounded stones and occasional flecks of charcoal
113	House 4	Cut of a posthole	0.3		0.1	Circular posthole with steep sloping sides and flat base, forms arc with [094] and [115]

Context No.	Feature	Context type	Width / Diam (m)	Length (m)	Depth (m)	Description of Context
114	House 4	Fill of posthole [113]				Loose mid-dark grey brown silt with <1% small sub-rounded stones and charcoal flecks, may be in-situ burning or infilling with burnt material
115	House 4	Cut of posthole	0.38		0.27	Circular posthole with steeply sloping-vertical sides and flat base, 1 of arc of postholes
116	House 4	Fill of posthole [115]				Loose-firm mid-dark greyish brown silt with < 1% small sub-angular and sub-rounded stones and 1% charcoal flecks
117	House 4	Cut for possible feature	0.5	0.57	0.04	Sub-circular feature with slightly sloping sides and flat base, aligned NE-SW
118	House 4	Fill of possible feature [117]				Loose mid dark grey brown/ mottled black brown slightly sandy silt with ,1% charcoal flecks and small sub-rounded stones
119	House 4	Cut of posthole	0.3		0.07	Sub-circular posthole with flat base, within gully cut [115] continues series of postholes
120	House 4	Fill of posthole [119]				Firm mid brown silt
121	House 4	Cut of posthole	0.45		0.3	Round posthole with vertical sides and flat base, cut into outer edge of gully
122	House 4	Fill of posthole [121]				Same as (123) – (010)
123	House 4	Fill of [008]				In Slot 3, same as (010) in Slot 1
124	House 4	Cut of posthole	0.35	0.37	0.18	Sub-circular posthole with sloping sides and flat/sloping base, at S edge of ring-ditch, just outside, possibly part of outer ring of posts holding up wall or earlier/ later phase
125	House 4	Fill of posthole [124]				Loose mid grey brown sandy silt with <1% charcoal flecks and 1-2% small sub-rounded stones
126	Isolated feature	Cut of a pit	0.75		0.29	Sub-circular pit with sloping sides and concave base
127	Isolated feature	Fill of [126]				Loose, mid- brown and sandy
128	Isolated feature	Cut of pit	1.12	2.22	0.20	Sub-circular pit with sloping sides and slightly concave base
129	Isolated feature	Fill of [128]				Loose, mid-dark brown and sandy with charcoal and burned bone
130	House 4	Cut of a pit				Sub-circular posthole with steep sides and concave base in inner ring of posts within house
131	House 4	Fill of [130]				Firm dark brown grey silty gravel
132	House 4	Cut of a pit	0.3		0.1	Sub-circular pit with steep sides and flat base
133	House 4	Fill of pit [132]				Firm brown/black silt
134	House 4	Cut of a large central pit	1.7	2.3	0.34	Sub-circular pit with steeply sloping sides and concave base, possible storage pit, evidence of burning
135	House 4	Fill of [134]				Loose dark brown sandy silt with burned bone and charcoal
136	House 4	Cut of a stake hole	0.07		0.12	Circular stakehole with sloping sides and concave base

Context No.	Feature	Context type	Width / Diam (m)	Length (m)	Depth (m)	Description of Context
137	House 4	Fill of [136]				Loose mid brown silt with 1% charcoal flecks
138	House 4	Cut of posthole/pit	0.56	0.66	0.24	Sub-circular feature with steep sloping sides and flat base, aligned E-W
139	House 4	Fill of [138]			0.24	Loose mid-dark grey brown silt with 1% charcoal flecks and small sub-rounded stones, homogenous matrix some degraded charcoal
140						UNASSIGNED
141						UNASSIGNED
142	House 4	2nd fill of large pit [134]		1.6	0.14	Loose light brown orange sandy silt with burned bone and charcoal
143	Isolated feature	2nd fill of pit [128]				Loose, black and sandy with charcoals
144	House 4	Cut of a posthole	0.3		0.1	Sub-circular posthole with steep sides and flat base
145	House 4	Fill of [144]				Loose dark brown black silt
146	House 4	Cut of a post hole near [134]	0.21	0.23	0.09	Circular posthole with steep sloping sides and concave base
147	House 4	Fill of [146]				Loose, dark brown sandy silt
148	House 4	Cut of a stakehole	0.11	0.12	0.07	Circular stakehole with steep sloping sides and concave base
149	House 4	Fill of [148]				Loose dark brown sandy silt
150	House 5	Cut of pit	1.00	2.20		Sub-circular, shallow sloping sides and concave base
151	House 5	Cut of a post hole	0.6		0.27	Posthole with sloping sides and concave base
152	House 5	Fill of [151]				Loose, dark brown and sandy
153	House 5	Cut of a posthole, house 5	0.38	0.4	0.12	Circular posthole with sloping sides and flat base, 1 of 4 in proximity to small palisade around house
154	House 5	Fill of [153]				Loose dark greyish brown sandy silt
155	House 5	Cut of a stakehole	0.11	0.13	0.1	Circular stakehole with steep sloping sides and concave base
156	House 5	Fill of [155]				Loose greyish brown sandy silt
157	House 5	Cut of a posthole	0.3		0.06	Circular posthole with sloping sides and flat base
158	House 5	Fill of [157], sample <342>				Loose greyish brown sandy silt, similar to [153], [157], [159], [161]
159	House 5	Cut of a posthole	0.34		0.07	Circular posthole with gradually sloping sides and flat base
160	House 5	Fill of [159], sample <343>				Loose greyish brown sandy silt
161	House 5	Cut of a post hole	0.23		0.1	Circular posthole with sloping sides and concave base
162	House 5	Fill of [161]				Loose greyish brown sandy silt, similar to (154) (158) (160)
163	House 4	Cut of a pit	0.94	2.43	0.26	Linear/curvilinear pit with steeply sloping sides and flat/ sloping base, aligned N-S, possible storage feature, disturbed by burrows
164	House 4	Fill of [163]				Loose mid grey silt with <1% small sub-rounded stones and charcoal fleck
165	House 5	Cut of ditch		1.5	0.24	Irregular feature with sloping sides and slightly concave base
166	House 5	Fill of ditch [165]				Loosely compacted, brown sandy silty

Context No.	Feature	Context type	Width / Diam (m)	Length (m)	Depth (m)	Description of Context
167	House 5	Cut of pit, Slot 1		2.4	0.19	Irregular feature with sloping sides and irregular/ flat base
168	House 5	Fill of [167],				Loose, brown and sandy
169	House 5	Lower fill of pit [163]			0.15	Loose mid to dark grey brown and black silt with < 1% charcoal flecks and chunks, burnt bone and redeposited natural, 5% medium –small angular stones
170	House 5	Fill of [167]				Loose, dark brown black and sandy with charcoals and stones
171	House 5	Cut of a posthole	0.32	0.35	0.14	Circular posthole with curved sides and concave base, 1 of 6 postholes [171-181] which possibly form structure between houses 4 and 5
172	House 5	Fill of [171]				Loose greyish brown sandy silt with possible packing stones
173	House 5	Cut of a post hole	0.28	0.3	0.13	Circular posthole with steep sloping sides and concave base
174	House 5	Fill of [173]				Loose greyish brown sandy silt with possible packing stones and some charcoal flecks
175	House 5	Cut of a posthole	0.27	0.28	0.17	Circular posthole with steep sloping sides and concave base
176	House 5	Fill of [175]				Loose greyish brown sandy silt with possible packing stones
177	House 5	Cut of a posthole	0.28	0.29	0.12	Circular posthole with sloping sides and concave base
178	House 5	Fill of [177]				Loose greyish brown sandy silt with possible packing stone and flecks of charcoal
179	House 5	Cut of a posthole	0.29	0.29	0.07	Circular posthole with sloping sides and flat base
180	House 5	Fill of [179]				Greyish brown loose sandy silt with possible packing stone
181	House 5	Cut of a posthole	0.28	0.3	0.19	Circular posthole with steep sloping sides and concave base
182	House 5	Fill of [181]				Loose greyish brown sandy silt with packing stone
183	House 5	Secondary fill of [164]			0.2	Loose mid orange grey-brown silt with <1% charcoal flecks and chunks, medium- large sub-rounded cobbles and flecks of redeposited natural
184						UNASSIGNED
185	House 5	Fill of ring-ditch [150]				Loose, brown and sandy
186	House 5	Charcoal of [150]				Loose, dark brown and sandy with charcoals
187	House 5	Stone in [150] (185)				Medium- large sub-angular and sub-rounded stones, 0.1-0.4m
188	House 5	Stone in (168)				Medium- large sub-angular and sub-rounded stones, 0.1-0.4m
189	House 5	Fill of [190]				Firm orange-grey gritty silt with fine roots and possible burrow
190	House 5	Cut for shallow pit or post hole,	0.7	0.7	0.12	Circular feature with concave sides and base, contained base sherd of pottery
191	House 5	Lower fill of [190]				Firm mixed and mottled gritty sandy silt and stones

Context No.	Feature	Context type	Width / Diam (m)	Length (m)	Depth (m)	Description of Context
192	House 5	Cut for ring groove	0.22	0.25	0.25	Partial circle with very steep sides and V shaped base
193	House 5	Cut of posthole	0.4	0.45	0.13	Circular posthole with sloping sides and concave base, within palisade connected at end of gully [197]
194	House 5	Fill of [193]				Loose dark brown sandy silt
195	House 5	Cut of a posthole	0.45	0.47	0.14	Circular posthole with sloped sides and concave base
196	House 5	Fill for [195]				Loose mixed dark/ light brown sandy silt, similar to [193] and [197]
197	House 5	Cut for gully between [193] & [195]		0.5	0.16	Linear feature with steep sloping sides and curved base
198	House 5	Fill of gully [197]				Loose mixed light/ dark brown sandy silt
199	House 5	Cut of a posthole	0.3	0.4	0.21	Irregular posthole with sharp sloping sides and concave base
200	House 5	Fill of [199]				Loose brown silt
201	House 5	Cut of posthole	0.31	0.45	0.31	Sub-Circular feature with vertical/steep sloping sides and flat base, aligned NW-SE, forming ring of posts within palisade
202	House 5	Fill of [201]				Loose mid grey brown slightly sandy silt with <1% charcoal flecks and small sub-rounded stones and flecks of redeposited natural, probably rapid infilling
203	House 5	Packing stones of posthole [201]				medium stones 0.08-0.15, mostly sub-angular- sub-rounded
204	House 5	Cut of a posthole	0.34	0.36	0.08	Circular posthole with sloping sides and concave base
205	House 5	Fill of posthole [204]				Loose greyish brown sandy silt with possible packing stones and small traces of charcoal
206	House 5	Cut of a posthole	0.41	0.43	0.13	Circular posthole with sloping sides and concave base within palisade in close proximity to [204]
207	House 5	Fill of posthole [206]				Loose greyish brown sandy silt with possible packing stones
208	House 5	Basal packing fill of [201]				Loose mid orange brown sandy silt with 1% small sub-rounded stones and occasional pea gravel, redeposited natural?
209	House 5	Upper fill of [192], Slot 5				Firm orange-grey silt with charcoal flecks
210	House 5	Lower fill of [192], Slot 1				Firm light orange brown sandy silt with occasional pebbles and charcoal flecks, redeposited subsoil
210	House 5	Lower fill of [192]				Firm light orange brown
211	House 5	Packing stones of [192], Slot 1		0.1-0.15		Local cobbles mostly sub-rounded of varied colour
212						Unassigned
213						Unassigned
214	House 5	Cut of a burnt pit	0.4	0.75	0.27	Sub-circular feature with steep sloping sides and concave base
215	House 5	Fill of pit [214]				Loose pinkish grey sandy silt with several large stones and Slot amount of

Context No.	Feature	Context type	Width / Diam (m)	Length (m)	Depth (m)	Description of Context
						charcoal
216	House 5	Cut of a posthole	0.32	0.34	0.35	Circular posthole with steep sloping sides and concave base
217	House 5	Fill of [216]				Loose dark brown sandy silt with possible packing stones and charcoal
218	House 5	Cut of a posthole	0.39	0.43	0.1	Sub-circular posthole with sloping sides and flat base, aligned N-S, within house but probably not related to house structure
219	House 5	Fill of [218]				Loose-firm light grey pink sandy silt with <1% small sub-rounded stones and occasional larger stones
220	House 5	Cut of a stakehole	0.07		0.15	Circular stakehole with vertical/ steeply sloping sides and U shaped base
221	House 5	Fill of [220]				Loose mid grey silt with <1% charcoal flecks, probably silt up naturally in single event
222	House 5	Cut of a posthole	0.2	0.4	0.1	Irregular/Sub-circular posthole with sloping sides and flat base
223	House 5	Fill of [222]				Loose, brown and sandy
224	House 5	Cut of a posthole	0.37	0.45	0.3	Irregular posthole with sharp sloping sides and concave base
225	House 5	Fill of [224]				Loose, medium brown and sandy with packing stones
226	House 5	Cut of a pit	0.6	0.69	0.06	Circular feature with sloping sides and flat base
227	House 5	Fill of [226]				Loose dark brown sandy silt with several large stones
228	House 5	Cut of a posthole	0.26	0.32	0.07	Circular posthole with sloping sides and flat base
229	House 5	Fill of [228]				Loose dark brown sandy silt
230	House 5	Cut of a posthole	0.4	0.41	0.34	Circular posthole with steep sides and concave base
231	House 5	Fill of [230]				Loose greyish brown sandy silt with packing stones and some charcoal
232	House 5	Cut of a posthole	0.36	0.42	0.25	Irregular posthole with sharp sloping sides and concave base
233	House 5	Fill of [232]				Loose, brown and sandy with packing stones
234	House 5	Cut of a stake hole	0.1		0.12	Circular stakehole with vertical/steeply sloping sides and slightly V shaped base
235	House 5	Fill of [234]				Loose mid brown silt with 1% charcoal flecks
236	House 5	Cut of a stake hole	0.1		0.17	Circular stakehole with steep sloping sides and V shaped base
237	House 5	Fill of [236]			0.17	Loose-firm mid brown with very infrequent charcoal flecks, silting up in single event
238	House 5	Cut of a post hole	0.3		0.2	Circular posthole with sloping sides and flat base
239	House 5	Fill of [238]				Loose mid grey silt with >1% small sub-rounded stones, burrow disturbance
240	House 5	Cut of a posthole	0.16	0.21	0.09	Irregular/Sub-circular posthole with slightly sloping sides and slightly

Context No.	Feature	Context type	Width / Diam (m)	Length (m)	Depth (m)	Description of Context
						concave base
241	House 5	Fill of [240]				Loose, brown and sandy
242	House 5	Cut of a pit/posthole	0.25	0.35	0.18	Sub Sub-circular feature with steep sloping sides and U shaped base, aligned E-W
243	House 5	Fill of [242]				Firm light pinkish grey sandy silt and >1% small sub-rounded stones and very infrequent charcoal flecks
244	House 5	Cut of a post hole	0.4		0.12	Circular posthole with sloping sides and flat base
245	House 5	Fill of post hole [244]				Loose mid-dark purplish black grey silt with >1% charcoal flecks, possibly post-pipe or silting up of disturbance
246	House 5	Packing stones of [244]				medium- large angular- sub-angular stones and cobbles
247	House 5	Packing fill of [244]	0.4	0.4	0.1	Loose light-mid brown grey sandy silt with very infrequent charcoal flecks, redeposited natural?
248						UNASSIGNED
249						UNASSIGNED
250						UNASSIGNED
251						UNASSIGNED
252	House 5	Cut of a posthole		0.28	0.21	Irregular posthole with sloping sides and concave base
253	House 5	Fill of [252]				Loose, dark brown and sandy with packing stones
254	House 5	Cut of a stakehole	0.1		0.14	Circular stakehole with steep sloping sides and V shaped base, possibly part of internal division
255	House 5	Fill of [254]				Loose mid-dark grey brown silt with 4% charcoal flecks, natural silting in single event
256	House 5	Cut of a stakehole	0.1		0.11	Circular stakehole with vertical sides and a concave base
257	House 5	Fill of [256]			0.11	Loose mid-dark grey brown silt with <1% charcoal flecks
258						UNASSIGNED
259						UNASSIGNED
260						UNASSIGNED
261	House 5	Cut of a small pit/posthole	0.24		0.09	Circular posthole with sloping sides and concave base
262	House 5	Fill of [261]				Loose dark brown silty sand with very occasional charcoal flecks
263	Isolated feature	Cut of pit running under baulk	0.63		0.22	Circular feature with sloping sides and concave base
264	Isolated feature	Fill of [263]				Loose mid brown sandy silt with occasional charcoal flecks
265	House 5	Cut of a posthole	0.4	0.48	0.12	Sub-circular posthole with sloping sides and concave base, possibly part of entrance to SE of palisade
266	House 5	Fill of [265]				Loose dark brown sandy silt with charcoal, quick infilling event possibly ancient topsoil

Context No.	Feature	Context type	Width / Diam (m)	Length (m)	Depth (m)	Description of Context
267	House 5	Cut of a post hole	0.28	0.3	0.19	Sub-circular posthole with sloping sides and concave base, aligned SE-NW, close to large pit [164] possibly part of upstanding structure or post for roof/ internal divisions
268	House 5	Fill of [267]				Loose-firm mid-dark brown grey silt with <1% charcoal flecks and small sub-rounded stones, disturbed by animal burrows, poorly sorted- possibly post-abandonment rapid infilling or backfilling with ancient topsoil
269	House 2	Cut of a post hole	0.18		0.09	Circular stakehole with sloping sides and concave base
270	House 2	Fill of posthole [269]				Loose mid grey sandy silt with rootlets and occasional redeposited natural
271	Isolated feature	Cut of a posthole	0.53	0.7	0.26	Sub-circular pit shallow sided with concave base
272	Isolated feature	Fill of [271]				Loose mid-grey sandy silt with rootlets , a few large sub-angular stones (0.1-0.2m) flecks of redeposited natural
273	House 2	Cut of a posthole	0.2	0.32	0.13	Sub-circular posthole with sloping sides and concave base, aligned E-W
274	House 2	Fill of [273]			0.13	Loose mid-dark sandy silt with very occasional small sub-rounded stones, post-abandonment infilling
275	House 2	Cut of a posthole/ stakehole		0.16	0.06	Circular feature with sloping sides and concave base
276	House 2	Fill of [275]				Loose mid grey sandy silt with very occasional small sub-rounded stones
277	House 2	Cut of a pit	0.46	0.68	0.1	Sub-circular pit with sloping sides and flat base, aligned E-W
278	House 2	Fill of a pit [277]				Loose mid greyish brown sandy silt with <1% small sub-rounded stones, probably post-abandonment silting
279						UNASSIGNED
280						UNASSIGNED
281	House 2	Cut of a possible post hole	0.3	0.36	0.03	Sub-circular posthole with sloping sides and flat base, aligned NW-SE, very ephemeral, hollow infilled with topsoil?
282	House 2	Fill of [281]				Loose mid grey brown sandy silt and <1% small sub-rounded stones
283	House 2	Cut of a pit	0.27	0.4	0.05	Sub-circular pit with sloping sides and flat base, aligned N-S
284	House 2	Fill of [283]				Loose mid brown grey sandy silt and <1% small sub-rounded stones
285	House 2	Cut of a possible post hole	0.14	0.2	0.03	Sub-circular feature with sloping sides and flat base, aligned NNE-SSW
286	House 2	Fill of [285]				Loose mid-grey sandy silt with <1% small sub-rounded stones, topsoil/ recent infilling?
287	House 2	Cut of a post hole	0.24	0.36	0.07	Sub-circular posthole with sloping sides and slightly concave base, aligned N-S, deliberately backfilled or infilled naturally

Context No.	Feature	Context type	Width / Diam (m)	Length (m)	Depth (m)	Description of Context
288	House 2	Fill of [287]				Loose mid brown grey sandy silt with <1% small sub-angular stones
289						Unassigned
290						Unassigned
291	House 2	Cut of posthole		0.65	0.19	Circular posthole with sloping sides and concave base
292	House 2	Fill of [291]				Loose, brown and sandy
293	House 2	Cut of a posthole		0.22	0.07	Circular posthole with slightly sloping sides and slightly concave base
294	House 2	Fill of [293]				Loose, brown and sandy
295						UNASSIGNED
296						UNASSIGNED
297	House 2	Cut of a posthole	0.87	0.53	0.30	Irregular posthole with sloping sides concave base
298	House 2	Fill of [297]				Loose, light brown and sandy
299	House 2	Cut of a pit	0.16	0.25	0.05	Sub-circular pit with sloping sides and flat base, aligned NW-SE, part of group of features on W side of house
300	House 2	Fill of [299]				Loose mid brownish grey sandy silt
301	House 2	Cut of a pit	0.4	0.53	0.08	Sub-circular pit with sloping sides and flat base, aligned NE-SW
302	House 2	Fill of [301]				Loose mid grey brown sandy silt with <1% small sub-rounded stones
303	House 2	Cut of a large pit	1	5	0.16	Sub-circular pit with sloping sides and flat/ irregular base
304	House 2	Fill of pit [303]				Loose light brown sandy silt with pottery charcoal and large stones
305	House 2	Cut of a post hole		0.36	0.08	Circular posthole with sloping sides and flat base
306	House 2	Fill of [305]				Loose, dark brown and sandy
307	House 2	Cut of a posthole		0.38	0.16	Circular posthole with sloping sides and concave base
308	House 2	Fill of [307]				Loose, dark brown and sandy with big stones
309						UNASSIGNED
310						UNASSIGNED
311	House 2	Cut of a posthole	0.18	0.28	0.1	Sub-circular posthole with sloping sides and concave base, aligned NW-SE, related to [313]
312	House 2	Fill of [311]				Loose mid-light pinkish brown sandy silt with very occasional charcoal flecks and <1% small sub-rounded stones
313	House 2	Cut of a post hole	0.44	0.5	0.14	Sub-circular posthole with sloping sides and irregular base, aligned NW-SE
314	House 2	Fill of [313]				Loose mid-light pinkish brown sandy silt with occasional charcoal flecks and <1% small sub-rounded stones
315	House 2	Cut of a pit	0.5	0.58	0.12	Sub-circular pit with sloping sides and flat base
316	House 2	Fill of [315]				Loose mid-light brown sandy silt with 1% small sub-rounded stones
317	House 4	Cut of a pit	0.27	0.3	0.15	Sub-circular/round posthole with sloped sides and flat base

Context No.	Feature	Context type	Width / Diam (m)	Length (m)	Depth (m)	Description of Context
318	House 4	Fill of [317]				Loose mid-grey silt
319	House 4	Cut of a pit Slot 1	0.3		0.12	Sub-circular/round posthole with 30% sloped sides and flat base
320	House 4	Fill of [319]				Loose/waterlogged mid brown silt
321	House 4	Cut of a pit	0.35	0.41	0.15	Sub-circular posthole with steep sides and flat base
322	House 4	Fill of [321]				Firm dark brown black silt with 1% gravel
323	House 3	Cut of a post hole		0.39	0.18	Sub-circular posthole with sloping sides and concave base
324	House 3	Fill of [323]				Loose, brown and sandy
325	House 2	Cut of a posthole		0.19	0.08	Sub-circular posthole with slightly sloping sides and slightly concave base
326	House 2	Fill of [325]				Loose, brown and sandy
327	House 2	Cut of a posthole		0.25	0.08	Sub-circular post hole with slightly sloping sides and flat base
328	House 2	Fill of [327]				Brown, loose and sandy
329	House 2	Cut of a posthole		0.43	0.08	Sub-circular posthole with sloping sides and flat base
330	House 2	Fill of [329]				Loose, brown and sandy
331	House 2	Cut of a posthole		0.28	0.05	Sub-circular posthole with sloping sides and flat base
332	House 2	Fill of [331]				Loose, brown and sandy
333	House 2	Cut of a posthole	0.25	0.06		Circular posthole with sloping sides and flat base
334	House 2	Fill of [333]				Loose mid-light brown sandy silt with <1% small sub-rounded stones
335	Isolated feature	Cut of a posthole	0.2-0.25		0.1	Sub-circular posthole with steep sloping sides and flat base possibly related to house 2
336	Isolated feature	Fill of [335]				Firm dark brown silt with small stone
337	House 2	Cut of a posthole		0.49	0.24	Circular posthole with steep sloping sides and concave base, possibly related to [339]
338	House 2	Fill of [337]				Loose, brown-mid and sandy
339	House 2	Cut of a posthole		0.4	0.24	Circular posthole with sharp sloping sides and concave base
340	House 2	Fill of [339]				Loose, mid-brown and sandy
341	House 3	Cut of a posthole		0.41	0.18	Sub-circular posthole with sharp sloping sides and concave base
342	House 3	Fill of [341]				Loose, brown and sandy
343	House 2	Cut of a posthole	0.16		0.06	Sub-circular posthole with flat sides and concave base
344	House 2	Fill of [343]				Loose, brown and sandy
345	House 2	Cut of a posthole	0.15	0.2	0.06	Sub-circular posthole with sloping sides and concave base
346	House 2	Fill of [345]				Loose mid-brown sandy silt
347	House 2	Cut of a posthole	0.35	0.25	0.05	Sub-circular posthole with shallow sides and flat base
348	Isolated feature?	Fill of [347]				Firm dark brown silt
349	House 2	Cut of a posthole	0.16	0.18	0.09	Sub-Circular posthole with sloping sides and concave base, close to possible pit [303]

Context No.	Feature	Context type	Width / Diam (m)	Length (m)	Depth (m)	Description of Context
350	House 2	Fill of [349]				Loose mid-brown sandy silt
351	Isolated feature?	Cut of posthole	0.15		0.06	Circular posthole with sloping sides and U shaped base
352	Isolated feature?	Fill of [351]				Loose mid brown sandy silt
353	House 2	Cut of a pit	0.6	0.65	0.3	Sub-circular pit with steep sloping sides, near entrance of house, contained pottery
354	House 2	Fill of [353]	0.6	0.65	0.3	Loose light brown sandy silt with charcoal and pottery
355	House 2	Cut of a post hole		0.4	0.25	Circular posthole with sharp sloping sides and concave base, possibly part of pit construction
356	House 2	Fill of [355]				Loose, light brown and sandy
357	House 2	Cut of a posthole	0.3		0.08	Circular posthole with sloping sides and slightly concave base
358	House 3	Fill of [357]				Loose dark brown sand with big stones
359	House 2	Cut of a posthole	0.31		0.09	Circular posthole with sloping sides and flat base, next to [385]
360	House 2	Fill of [359]				Loose, dark brown and sandy
361	House 3	Cut of a posthole	0.2		0.13	Circular posthole with sloping sides and concave base with big stone
362	House 3	Fill of [361]				Loose, black and sandy
363	House 3	Cut of a posthole	0.3		0.09	Circular posthole with sloping sides and concave base
364	House 3	Fill of [363]				Loose, black and sandy
365	House 3	Cut of a post hole	0.73		0.30	Circular posthole with sloping sides and concave base
366	House 3	Fill of 365				Loose, brown and sandy with stones
367-376						UNASSIGNED
377	House 2	Cut of a ring-ditch, house 2	1.40	3.00	0.28	Curvilinear ditch/storage area with sloping sides and flat /sloping base, aligned NNW-SSE
378	House 2	Upper fill of [377]				Moderately compacted mid brown sandy silt with charcoal and pottery
378	House 2	Upper fill of ditch [377]			0.16	Loose mid greyish brown sandy silt with <1% charcoal flecks and 1-2% small sub-rounded stones and occasional larger cobbles
379	House 2	Cut of a posthole	0.3	0.35	0.2	Sub-circular posthole with steep sides and concave base, adjacent to [167] and [199]
380	House 5	Fill of [379]				Firm mid brown silt with small stones
381	Isolated feature	Cut of a post hole	0.35	0.37	0.15	Sub-circular posthole with steep sides and conical base
382	Isolated feature	Fill of [381]				Firm black silt, charcoal-rich, post burnt in-situ?
383	House 2	Fill of posthole [355]				Loose, dark brown and sandy
384	House 2	Cut of a posthole		0.15	0.07	Sub-circular posthole with sloping sides and flat base
385	House 2	Fill of [384]				Loose, light brown and sandy
386	House 2	Cut of a posthole		0.65	0.31	Circular posthole with sharp sloping sides and concave base with modern pottery
387	House 2	Fill of [386]				Loose, brown and sandy

Context No.	Feature	Context type	Width / Diam (m)	Length (m)	Depth (m)	Description of Context
388	House 2	Cut of posthole	0.31		0.06	Circular posthole with sloping sides and flat base
389	House 2	Fill of [388]				Loose, brown and sandy
390	House 3	Cut of a posthole	0.39		0.13	Circular posthole with sloping sides and concave base
391	House 3	Fill of [390]				Loose, brown and sandy with stone
392	House 3	Cut of a post hole	0.35		0.13	Circular posthole with sloping sides and concave base
393	House 3	Fill of [392]				Loose, brown and sandy
394	House 2	Cut of linear feature, Slot 4	0.25	1.7	0.14	Linear feature with steep sloping sides and curved base
395	House 2	Upper fill of [394]				Loose dark brown sandy silt with charcoal
396	House 2	Lower fill of [395]				Loose light brown orange sandy silt with charcoal
397						UNASSIGNED
398						UNASSIGNED
399	House 2	Cut of a posthole	0.53	0.61	0.33	Sub-circular posthole with steep sloping sides and concave base
400	House 2	Fill of [399]				Loose dark brown sandy silt with large stone
401	House 2	Cut of a posthole	0.32	0.35	0.04	Sub-circular posthole with sloping sides and flat base
402	House 2	Fill of [401]				Loose dark brown sandy silt
403	House 2	Cut of a posthole	0.19	0.2	0.03	Circular posthole with sloping sides and flat base
404	House 2	Fill of [403]				Loose dark brown sandy silt
405	House 2	Cut of a pit, Slots 3/4	0.7	2	0.34	Sub-circular pit with steep sloping sides and curved base
406	House 2	Fill of [405]				Loose light brown sandy silt with charcoal, burnt soil and small piece of pot- strong evidence of burning
407						Unassigned
408						Unassigned
409	Isolated feature	Cut of a posthole	0.2		0.1	Round posthole with steep sides and conical base
410	Isolated feature	Fill of [409]				Loose black grey silt
411						UNASSIGNED
412						UNASSIGNED
413	Isolated feature	Cut of posthole	0.15-0.1		0.06	Sub-circular posthole with flat base, part of post built structure under W baulk
414	Isolated feature	Fill of [413]				Black-dark brown silt
415	Isolated feature	Packing stones of [381]				3 stones pressed into natural
416	House 2	Fill of [417]				Loose brown mid sand with big pieces of pottery, burnt bone and lots of charcoals
417	House 2	Cut of pit				Curvilinear ditch with sloping sides and concave base
418	House 2	Cut of a post hole, Slot 6	0.35	0.38	0.37	Sub-circular posthole with sharp sides and concave base
419	House 2	Fill of [418]				Loose, brown and sandy with stone
420	House 2	Stone in posthole				Very big stones around postholes and

Context No.	Feature	Context type	Width / Diam (m)	Length (m)	Depth (m)	Description of Context
		[418]				in fill
421	House 2	Cut of a posthole, Slot 2	0.5	0.87	0.25	Sub-circular pit with steep sides and flat base
422	House 2	Fill of [421]				Firm dark brown silt with 3 or 4 stones (0.1 diameter)
423	House 2	Cut of a posthole, Slot 1	0.39	0.46	0.39	Sub-circular posthole with vertical/steep sloping sides and flat base, aligned E-W
424	House 2	Fill of [423]				Loose mid greyish brown sandy silt with <1% charcoal flecks and small sub-rounded stones, slightly disturbed by bioturbation
425	House 2	Packing stones in [423]				4 medium stones pressed into cut of posthole
426	House 2	Cut for possible pit/terminal end of ditch	0.82	1.00	0.15	Sub-circular pit with sloping sides and slightly concave base, aligned NE-SW
427	House 2	Fill of [426]				Loose mid greyish brown sandy silt with <1% charcoal flecks and small sub-rounded stones with bone on surface
428	House 2	Cut of a large Sub-circular pit	0.63	0.94	0.2	Ovoid pit with sloping sides and flat base
429	House 2	Fill of [428]				Moderately compacted mid brown sandy silt with occasional charcoal flecks
430	House 2	Cut of post hole, Slot 6	0.48		0.07	Circular posthole with slightly sloping sides and flat base
431	House 2	Fill of [430]				Loose, dark brown and sandy
432	House 2	Cut of an Sub-circular pit	0.52	0.65	0.11	Sub-circular pit with sloping sides and flat base
433	House 2	Fill of [432]				Moderately compacted mottled light brown grey silty sand with occasional charcoal flecks
434	House 2	Cut of a linear feature	0.15	0.48	0.08	Linear feature with steep sloping sides and flat base in middle of house
435	House 2	Fill of [434]				Loose dark brown sandy silt
436	House 2	Cut of a pit	0.5	0.7	0.18	Sub-circular pit with sloping sides and flat base, in centre of house so possibly a hearth
437	House 2	Fill of [436]				Loose brown sandy silt with stones, charcoal and burnt bone
438	House 2	Cut of a pit	0.5	0.5	0.1	Sub-circular posthole with sloping sides and concave base
439	House 2	Fill of [438]				Loose dark brown sandy silt
440	House 2	Cut of a posthole	0.48	0.41	0.16	Sub-circular posthole with sloping sides and concave base, in centre of house probably an internal support post
441	House 2	Fill of [440]				Loose dark brown sandy silt with stones and charcoal and possible packing stones
442	House 2	Cut of a pit	1.6		0.36	Circular pit with sloping sides and concave base
443	House 2	Fill of [442]				Loose, brown- mid and sandy with lots of stones, a few sub-rounded, mostly sharp, some around the pit

Context No.	Feature	Context type	Width / Diam (m)	Length (m)	Depth (m)	Description of Context
444	House 2	Cut of a pit	0.3	0.35	0.2	Sub-circular posthole with steep sides and concave base
445	House 2	Fill of [444]				Firm dark brown silt
446	House 2	Cut of a pit	0.35		0.25	Round posthole with steep sides and conical base
447	House 2	Fill of [446]				Firm dark brown silt
448	House 2	Cut of a post hole	0.3		0.13	Circular posthole with sloping sides and concave base
449	House 2	Fill of [448]				Same black charcoal-rich material in ditch pit on E side of house
450	House 2	Cut of a posthole	0.4		0.21	Circular posthole with steep sides and concave base
451	House 2	Fill of [450]				Firmly compacted dark brown silt
452	House 2	Cut of a posthole, Slot 1	0.36		0.4	Circular posthole with vertical sides and flat base
453	House 2	Fill of [452]				Loose mid-dark brownish grey sandy silt with 1% charcoal and 1% small sub-rounded stones
454	House 2	Cut of a posthole	0.22	0.48	0.13	Sub-circular posthole with sloping sides and flat base near pit possible shallow support post
455	House 2	Fill of [454]				Loose greyish brown sandy silt
456	House 2	Cut of a posthole	0.25	0.54	0.11	Sub-circular posthole with sloping sides and flat base
457	House 2	Fill of [456]				Loose greyish brown sandy silt
458	House 2	Cut of a posthole	0.45	0.75	0.14	Sub-circular posthole with gradual slope and flat base
459	House 2	Fill of [458]				Loose greyish brown sandy silt
460	House 2	Cut of a posthole, Slot 7	0.45		0.17	Circular posthole with sloping sides and concave base
461	House 2	Fill of [460]				Loose, brown and sandy
462	House 2	Cut of a posthole, Slot 7	0.52		0.15	Circular posthole with sloping sides and concave base
463	House 2	Fill of [462]	0.52		0.15	Loose, brown and sandy
464	House 2	Lower fill of [377], Slot 1				Loose mid-dark brownish grey sandy silt with 1-2% charcoal, redeposited natural flecks and possibly a little daub, 1% small sub-rounded stones. Possibly disturbed by burrowing.
465	House 2	Cut of a post hole	0.3		0.32	Circular posthole with sloping sides and concave base. Close to [460] and [462] possibly part of house construction
466	House 2	Fill of [465]				Loose, brown and sandy
467	House 2	Cut of a post hole	0.24		0.45	Circular posthole with tapering sides and concave base
468	House 2	Fill of [467]				Loose grey-brown silty sand with pot, charcoal flecks and coal used as a packing stone
469	House 2	Cut of a post hole	0.28		0.17	Circular posthole with tapering sides and concave base
470	House 2	Fill of [469]				Loose dark brown silty sand with occasional charcoal flecks
471	House 2	Cut of a posthole	0.4	0.45	0.23	Sub-circular posthole with sloping sides and concave base

Context No.	Feature	Context type	Width / Diam (m)	Length (m)	Depth (m)	Description of Context
472	House 2	Fill of [471]				Loose grey brown silty sand with occasional charcoal flecks and packing stones
473	House 2	Cut of a stake hole, Slot 1	0.06		0.12	Circular stakehole with U shaped base, probably associated with [475], possibly part of a less substantial structure
474	House 2	Fill of [473]				Loose mid-dark grey sandy silt with <1% charcoal flecks
475	House 2	Cut of a posthole	0.08		0.15	Circular stakehole with sloping sides and V shaped base
476	House 2	Fill of [475]				Loose mid-dark grey sandy silt with <1% charcoal flecks
477	House 2	Cut of a posthole	0.28	0.34	0.06	Sub-circular posthole with slightly sloping sides and flat base
478	House 2	Fill of [477]				Loose, brown and sandy
479	House 2	Cut of a possible feature, Slot 1	0.4	0.44	0.15	Sub-circular feature with sloping sides and concave base, aligned SW-NE
480	House 2	Fill of [379]				Loose light-mid brown sandy silt with very occasional charcoal flecks and 1-2% small sub-rounded stones
481	House 2	Cut of a possible post hole	0.17		0.07	Circular posthole with sloping sides and concave base
482	House 2	Fill of [481]				Loose, brown and sandy
483	House 2	Packing stones of posthole [452]				Some in-situ. 0.1-0.15m, cuboid-sub-rounded cobbles
484	House 2	Cut of a post hole	0.31		0.21	Circular posthole with sloping sides and concave base
485	House 2	Fill of [484]				Loose, grey and sandy
486	House 2	Cut of a pit or small pit	0.98	0.25	0.14	Sub-circular feature with sloping sides and flat base
487	House 2	Fill of [486]				Loose light brown sandy silt with charcoal, pottery and large stones
488	House 6	Cut of a post hole	0.5	0.75	0.2	Sub-circular posthole with irregular-sloping sides and flat base, aligned NNE-SSW, possibly re-cut of earlier posthole.
489	House 6	Fill of [488]				Loose dark black grey silt with 2% charcoal flecks and chunks, 1% small sub-rounded stones and <1% burnt bone flecks, relatively homogenous fill with darker patches possibly related to burning event
490	House 2		2.00	0.6	0.10	Wear Pattern probably caused by movement through the entrance of the house
491						UNASSIGNED
492						UNASSIGNED
493						UNASSIGNED
494	House 6	Cut of post hole	0.57	0.59	0.17	Circular posthole with sloping sides and concave base, possibly part of construction of wall of house
495	House 6	Fill of [494]				Loose dark brown sand with charcoals and burned bones
496						UNASSIGNED
497						UNASSIGNED

Context No.	Feature	Context type	Width / Diam (m)	Length (m)	Depth (m)	Description of Context
498	House 6	Cut of a post hole	0.47		0.08	Circular posthole with sloping sides and concave base
499	House 6	Fill of [498]				Loose light brown very sandy with small stones
500	House 6	Cut of a posthole	0.39		0.07	Circular posthole with sloping sides and concave base
501	House 6	Fill of [500]				Loose, light brown and sandy with small stones
502	House 6	Cut of a posthole	0.38	0.4	0.12	Sub-circular posthole with sloping sides and slightly concave base, aligned N-S, forming part of outer wall of house
503	House 6	Fill of [502]				Loose mid-orange brown grey sandy silt with 1-2% gravel and small sub-rounded stones
504	House 6	Cut of a posthole	0.52	0.42	0.3	Sub-Circular posthole with steep sloping/vertical sides and irregular base, aligned N-S, 1 of outer ring of posts
505	House 6	Fill of [504]				Loose mid orange brown grey silt with 1% small sub-rounded stones, charcoal flecks and 1 or 2 large chunks (4-5cm), remains of packing material or backfilled material.
506	House 6	Packing stones in [504]				Medium to large sub-angular cobbles, within fill and some in situ on edge (0.1-0.25)
507	House 6	Cut of a large pit	0.7		0.2	Circular posthole with sloped sides and concave base
508	House 6	Fill of [507]				Loose greyish brown sandy silt with charcoal, bone and pottery
509	House 6	Cut of a posthole	0.46	0.6	0.4	Sub-circular posthole with steep sloping sides and concave base, part of a series of post hole
510	House 6	Fill of [509]				Loose greyish brown sandy silt, very charcoal-rich, post possibly burnt in-situ
511	House 6	Cut of a posthole	0.28		0.07	Circular posthole with sloping sides and concave base
512	House 6	Fill of [511]	0.28		0.07	Loose, light brown orange and sandy
513	House 6	Cut of a posthole	0.49		0.12	Sub-circular posthole with slightly sloping sides and concave base, 1 of 4 postholes on E side of house
514	House 6	Fill of [513]				Very loose, dark brown grey and sandy with stones
515	House 6	Cut of a posthole	0.45	0.4	0.15	Circular posthole with sloped sides and concave base, possibly 1 of a series of posthole which circle the exterior of house
516	House 6	Fill of [515]				Loose greyish brown sandy silt with possible packing stones
517	House 6	Cut of a posthole	0.22	0.25	0.2	Sub-circular posthole with steep sloping sides and flat base, aligned E-W, possible part of outer wall of structure
518	House 6	Fill of [517]				Loose mid grey slightly sandy silt with <1% charcoal and small sub-rounded

Context No.	Feature	Context type	Width / Diam (m)	Length (m)	Depth (m)	Description of Context
						stones
519	House 6	Cut of a pit	1.29		0.23	Sub-circular pit with sharp sloping sides and irregular concave base,
520	House 6	Fill of [519]				Mid-loose dark brown black mid-sandy with big stones, charcoals and burned bones
521	House 6	Cut of a pit	0.5		0.18	Circular posthole with concave sides and concave base, possibly re-cut of earlier feature
522	House 6	Fill of [521]				Moderately compacted brown black sandy silt with burnt bone and occasional charcoal flecks and packing stones
523	House 6	Cut of a posthole	0.5			Circular posthole with straight sides, replaced by [521]
524	House 6	Fill of [523]				Moderately compacted brown black sandy silt with a large post-pad stone and charcoal flecks
525	House 6	Cut of a post hole	0.5	0.6	0.3	Sub-circular posthole with steep sides and concave base, part of internal ring of posts
526	House 6	Fill of [525]				Firm black silt with packing stones, very organic and charcoal-rich
527	House 6	Cut of a post hole	0.20	0.25	0.15	Sub-circular posthole with sloping sides and flat base, aligned N-S
528	House 6	Fill of [527]				Loose mid brownish grey sandy silt with < 1% charcoal flecks and small sub-rounded stones
529	House 6	Packing stones of [525]				Within soil matrix, particularly on sides of cut
530	House 6	Cut of a posthole	0.5	0.6	0.15	Sub-circular posthole with steep sides and flat base, 1 of inner ring within house
531	House 6	Fill of posthole [530]				Firm dark brown silt with 1% small stones and gravel
532	House 6	Cut of a pit	0.5	1.61	0.16	Linear pit with slightly sloping sides and flat base
533	House 6	Fill of a pit				Loose, dark brown and sandy
534	House 6	Cut of a p/h	0.5		0.25	Circular posthole with sloping sides and concave base
535	House 6	Fill of [534]				Loose greyish brown sandy silt
536	House 6	Cut of a posthole	0.5		0.18	Circular posthole with sloped sides and concave base
537	House 6	Fill of [536]				Loose greyish brown sandy silt
538	House 6	Cut of a pit	0.60	0.70	0.14	Sub-circular pit with sloped sides and irregular base
539	House 6	Fill of [538]				Loose greyish brown sandy silt with possible packing stones
540						UNASSIGNED
541						UNASSIGNED
542	House 6	Second fill of [540]				Loose, brown grey and sandy with small stones
543	House 6	Cut of a pit				Circular pit/posthole with sloping sides and concave base

Context No.	Feature	Context type	Width / Diam (m)	Length (m)	Depth (m)	Description of Context
544	House 6	Fill of [543]				Loose grey brown sandy silt with packing stones and occasional charcoal flecks and burnt bone
545	House 6	Cut of a posthole	0.42	0.46	0.18	Circular posthole with steep sloping sides and concave base
546	House 6	Fill of [545]				Loose dark brown sandy silt with possible packing stones
545	House 6	Cut of a posthole	0.46		0.17	Circular posthole with sloping sides and flat base
546	House 6	Fill of posthole				Loose greyish brown sandy silt with possible displaced packing stones
547	House 6	Cut of a posthole	0.57	0.66	0.19	Almost circular posthole with sloping sides and slightly concave base, possibly part of house construction
548	House 6	Fill of [547]				Loose, dark brown and sandy with lots of stones and burnt bone
549						UNASSIGNED
550						UNASSIGNED
551	House 6	Cut of a posthole	0.24	0.24	0.08	Sub-circular posthole with sloped/eroded sides and flat base, possibly part of a series of posthole but far less substantial than the others in the series
552	House 6	Fill of [551]				Loose dark brown sandy silt
553	House 6	Cut of a posthole	0.45	0.58	0.28	Sub-circular posthole with sloping sides and concave base, part of a ringed series
554	House 6	Fill of [553]				Loose dark brown sandy silt, no charcoal and possible displaced packing stone suggests post was removed
555	House 6	Cut of a posthole	0.33	0.4	0.09	Sub-circular posthole with flat sides and base, part of construction of wall
556	House 6	Fill of posthole,				Loose, brown and sandy with a few stones
557	House 6	Cut of a posthole	0.55	0.58	0.21	Sub-circular posthole with sloping sides and slightly concave base
558	House 6	Fill of [557]				Loose, brown and sandy with stones, some quite big and smaller ones on the bottom
559	House 6	Cut of a post hole	0.40	0.71	0.4	Sub-circular posthole with sloping sides and V shaped/ concave base, in Circular series of postholes forming structure of house
560	House 6	Fill of [559]				Loose dark brown sandy silt
561	House 6	Cut of posthole/stake hole	0.20		0.08	Sub-circular feature with sloping sides and concave base, probably relating to house structure
562	House 6	Fill of [561]				Loose mid-dark brownish black grey with <1% small sub-rounded stones, rootlets throughout
563	House 6	Cut of pit/ posthole	0.41		0.06	Shallow, circular posthole with straight sides and flat base
564	House 6	Fill of [563]				Loose black brown sandy silt
565	House 6	Cut of a posthole	0.51		0.11	Circular posthole with concave sides and sloping base in line with 2 other

Context No.	Feature	Context type	Width / Diam (m)	Length (m)	Depth (m)	Description of Context
						postholes [567] and [571]
566	House 6	Fill of [565]				Loose, brown grey and sandy with small stones
567	House 6	Cut of a posthole	0.41		0.09	Circular posthole with sloping sides and concave base
568	House 6	Fill of [567]	0.41		0.09	Circular posthole with sloping sides and concave base
569						UNASSIGNED
570						UNASSIGNED
571	House 6	Cut of a posthole	0.63	0.66	0.14	Sub-circular posthole with slightly sloping sides and flat base
572	House 6	Fill of [571]				Loose, dark brown and sandy with some charcoals and 10% stones
573	House 6	Cut of a posthole	0.36		0.16	Circular posthole with steep sloping sides and flat base, forms NE side of outer circle of posts
574	House 6	Fill of [573]				Loose mid-dark blackish grey silt with 5% medium- small sub-rounded stones <1% charcoal, post probably removed and then infilled with demolition material
575	House 6	Cut of base of possible pit	1.15	3.45	0.15	Linear feature with sloping sides and irregular base, aligned N-S , some disturbance by roots and burning
576	House 6	Fill of [575]				Loose mid-dark blackish brown silt with <5% small-medium sub-rounded – sub-angular stones , <1% burnt bone and 1-2 % charcoal flecks and some chunks, <1% flecks of redeposited natural
577	House 6	Cut of a posthole	0.3	0.34	0.23	Sub-circular posthole with sharp sloping sides and flat base
578	House 6	Fill of [577]				Loose, light brown and sandy
579	House 6	Cut of a posthole	0.4	0.45	0.2	Sub-circular posthole with sharp sloping sides and concave base, in line with other post holes around house, part of wall construction and possible of pit
580	House 6	Fill of [579]				Loose, brown and sandy with charcoals
581	House 6	Cut of a post hole	0.4	0.73	0.26	Sub-circular posthole with sloping sides and irregular base, posthole possibly pulled out to leave irregular shape
582	House 6	Fill of [581]				Loose, brown and sandy
583	House 6	Cut of a posthole	0.4	0.73	0.23	Loose, light brown and sandy with redeposited natural
584	House 6	Fill of [583]				Loose, brown grey and sandy with small stones
585	House 6	Cut of a post hole	0.30	0.28	0.08	Sub-circular-linear posthole with sloping sides and irregular base
586	House 6	Fill of [585]				Loose, brown grey and sandy with small stones
587	House 6	Cut of a pit	0.50	1.31	0.15	Linear pit with sloping sides and irregular base
588	House 6	Fill of [587]				Loose, brown grey and sandy with

Context No.	Feature	Context type	Width / Diam (m)	Length (m)	Depth (m)	Description of Context
						small stones
589	House 6	Cut of a posthole	0.31		0.15	Circular posthole with sloping sides regular base
590	House 6	Fill of [589]				Loose, dark brown and sandy with some charcoals
591	House 6	Overburden overlying the postholes [507] [551] [534] [538]				Same as material within postholes. Probably a single event which infilled all post holes on SW side of house
592	House 6	Cut of a posthole	0.71		0.17	Circular-linear cut of posthole with sloping sides and irregular base, in a line with [585] and [589]
593	Isolated Feature	Curvilinear cut				Faint stain seen in the subsoil
594	House 2	Deposit			0.02	Black, charcoal-rich deposit that sealed the features of house 2

APPENDIX 2: House 3 Context Register

Context No.	Feature	Context type	Width / Diam (m)	Length (m)	Depth (m)	Description of Context
003	House 3 internal feature	Cut of posthole	0.44		0.31	Large posthole that would have held a structural timber.
004	House 3 internal feature	Fill of posthole [003]	0.44		0.31	Loose grey brown sandy silt with charcoal flecks and lumps and packing stones.
005	House 3 internal feature	Cut of post hole	0.80		0.39	Circular post hole with steep sloping sides and concave base. Cut of a deep post hole on the southern part of house 3. Possibly part of a ringed ditch series. No evidence of remaining post though possible displaced packing stones.
006	House 3 internal feature	Fill of post hole [005]				Loose dark brown sandy silt with possible displaced packing stones, same as overburden spread (009).
007	House 3 internal feature	Cut of post hole	0.45	0.45	0.30	Sub-circular post hole with steep sloping sides and flat base. Probably forming circle of load-bearing posts for structure 3, along with [003] & [005] at least. Post probably removed.
008	House 3 internal feature	Fill of post hole [007]				Loose mid-dark blackish grey slightly sandy silt with medium large sub rounded cobbles, possible packing stones and charcoal/organic burnt matter and redeposited natural. Fairly quick infilling
009	House 3	Fill of [005]				Loose dark brown sandy silt with several large stones.
010	House 3	Packing stone in post hole		0.15-0.20		At least 1 in-situ packing stone in post hole, 1 or 2 others look like could be stones in (008) that have tumbled in from edges. Sub-rounded cobbles
011	House 3 internal	Cut of post hole	0.80		0.20	Circular post hole with steep sides and flat base. Forms the structural wall to

Context No.	Feature	Context type	Width / Diam (m)	Length (m)	Depth (m)	Description of Context
	feature					W of house
012	House 3 internal feature	Fill of post hole [011]		0.80	0.20	Loose dark brown/black silt with small stone and large pieces of pot. Single very waterlogged fill of post hole.
013	House 3 internal feature	Cut of post hole	0.50		0.15	Circular post hole with sloping sides and flat base. Possibly part of inner ring of house).
014	House 3 internal feature	Fill of post hole [013]				Loose dark brown/black silt.
015	House 3 internal feature	Cut of shallow pit	1.20	2	0.14	Sub circular pit with gently sloping sides and flat base. Probably the remains of internal ditch ring-ditch.
016	House 3 internal feature	Fill of pit [015]				Loose grey-brown sandy silt with occasional charcoal flecks, pebbles and stones
017	House 3 internal feature	Cut of post hole	0.52	0.56	0.33	Sub-circular posthole with sharp sloping sides and flat base with packing stones and some charcoals. Next to possible gully.
018	House 3 internal feature	Fill of post hole [017]				Loose, dark brown and sandy with charcoals and packing stones
019	House 3 internal feature	Cut of a post hole	0.27	0.50	0.09	Sub-circular post hole with sloping sides and flat base.
020	House 3 internal feature	Fill of post hole [019]				Loose brown sandy silt
021	House 3	Cut of post hole	0.28	0.34	0.10	Sub-circular post hole with sloping sides and concave base.
022	House 3	Fill of post hole [021]				Loose brown sandy silt
023	House 3 internal feature	Cut of post hole	0.29	0.31	0.08	Sub-circular post hole with sloping sides and concave base aligned E-W. Probably forming outer wall of house 3. Post probably removed prior to infilling.
024	House 3 internal feature	Fill of post hole [023]				Loose mid grey brown slightly sandy silt, < 1% charcoal flecks.
025	House 3	Cut of post hole	0.32	0.34	0.15	Sub-circular post hole with sloping sides and concave base aligned E-W. Probably forming outer wall of house 3. Post removed and then infilled with homogenous material possibly natural silting in one event soon after post removed.
026	House 3	Fill of post hole [025]				Loose mid grey brown slightly sandy silt with <1% charcoal flecks. Fairly homogenous fill, probably natural silting
027	House 3	Cut of post hole	0.33	0.55	0.10	Sub-circular post hole with sloping sides and flat base aligned NW-SE. Related to SW arc of posts forming outer wall of house 3. If posthole, post appears to have been removed prior to

Context No.	Feature	Context type	Width / Diam (m)	Length (m)	Depth (m)	Description of Context
						infilling.
028	House 3	Fill of post hole [027]				Loose mid brownish grey slightly sand silt, < 1% charcoal flecks.
029		Unassigned				
030		Unassigned				
031	House 3 internal feature	Cut of post hole	0.23	0.24	0.23	Sub-circular post hole with sharp sloping sides and concave base with some stones inside. Close to stony Curvilinear feature or gully?
032	House 3 internal feature	Fill of post hole [031]				Loose brown sandy silt with stones.
033	House 3 internal feature	Cut of post hole	0.18	0.35	0.14	Sub-circular post hole with sloping sides and concave base.
034	House 3 internal feature	Fill of post hole [033]				Loose brown sandy silt
035	House 3 internal feature	Cut of post hole	0.70		0.26	Circular post hole with sloping sides and concave base. Possibly part of house construction. 1 of 3 post holes in a line.
036	House 3 internal feature	Fill of post hole [035]				Loose brown sandy silt with big and small stones.
037	House 3 internal feature	Cut of post hole	0.39		0.21	Circular post hole with sloping sides and concave base. T1 of 3 posthole in a line.
038	House 3 internal feature	Fill of post hole [037]				Loose brown sandy silt with big and small stones.
039	House 3 internal feature	Cut of post hole	0.62		0.22	Circular posthole with sloping sides and concave base. 1 of 3 postholes in a line.
040	House 3 internal feature	Fill of post hole [039]				Loose brown sandy silt with big and small stones.
041	House 3 internal feature	Cut of post hole	0.30	0.48	0.15	Irregular post hole with sloping sides and irregular base.
042	House 3 internal feature	Fill of post hole [041]	0			Loose brown sticky silt
043	House 3 internal feature	Cut of post hole	0.23	0.30	0.09	Sub-circular post hole with sloping sides and almost flat base
044	House 3 internal feature	Fill of post hole [043]				Loose brown sandy silt.
045	House 3 internal feature	Cut of post hole	0.20	0.27	0.14	Sub-circular post hole with sloping sides and irregular (concave) base. Next to [043]
046	House 3 internal feature	Fill of post hole [045]				Loose brown sandy silt.

Context No.	Feature	Context type	Width / Diam (m)	Length (m)	Depth (m)	Description of Context
047	House 3	Cut of post hole	0.28	0.30	0.05	Sub-circular post hole with sloping sides and concave base. Next to [049]
048	House 3	Fill of post hole [047]				Loose brown sandy silt with charcoals.
049	House 3	Cut of post hole	0.37	0.42	0.08	Sub-circular posthole with sloping sides and slightly concave base.
050	House 3	Fill of post hole [049]				Loose brown sticky silt with charcoals
051	House 3 internal feature	Cut of post hole	0.40	0.46	0.30	Sub-circular post hole with sloping sides and concave base. Next to [043] and [045]
052	House 3 internal feature	Fill of post hole [051]				Loose brown sandy silt with lots of big stones
053	House 3 internal feature	Cut of ring-ditch	2.00	5.00	0.25-0.30	Curvilinear ring-ditch with steep shallow sides and flat base.
054	House 3 internal feature	Fill of ring-ditch				Firm dark brown black silt
055	House 3 internal feature	Cut of post hole	0.38	0.42	0.20	Sub-circular posthole with sloping sides and flat base. Next to [045] and [043]
056	House 3 internal feature	Fill of post hole [055]				Loose brown sandy silt with charcoals.
059	House 3	Cut of post hole	0.48	0.60	0.25	Sub-circular posthole with irregular/concave base and sloping sides. Beneath spread (054) of pit [053], Slot 1 north. Very near post hole's [061] + [065], also in Slot 1. Possible support posts for a small structure.
060	House 3	Fill of post hole [059]				Loose grayish brown sandy silt with possible packing stones
061	House 3	Cut of post hole	0.23	0.24	0.11	Sub-circular posthole with sloping sides and concave base. Beneath fill of [053] Slot 1, north.
062	House 3	Fill of post hole [061]				Loose light brown sandy silt
063	House 3 internal feature	Cut of post hole	0.30		0.20	Circular post hole cut in to side of ring-ditch. Sealed by (054)
064	House 3 internal feature	Fill of post hole [063]				Loose dark grey-brown silt.
065	House 3 internal feature	Cut of post hole	0.65	0.82	0.16	Sub-circular post hole with sloping sides and irregular base. In pit [053] Slot 1, seemingly at the terminal.
066	House 3 internal feature	Fill of post hole [065]				Loose grayish brown sandy silt
067	House 3	Cut of post hole	0.23	0.24	0.17	Sub-circular post hole with sloping sides and concave base Possibly part of construction of house 3.
068	House 3	Fill of post hole [067]				Loose dark brown sandy silt with large packing stones (081).

Context No.	Feature	Context type	Width / Diam (m)	Length (m)	Depth (m)	Description of Context
069	House 3	cut of post hole	0.40		0.28	Sub-circular post hole, Shallow on N and steep on S sides with Irregular base. One of inner ring of house.
070	House 3	Fill of post hole [069]	0.40		0.28	Loose dark grey silt.
071	Curvilinear feature	Cut of possible pit	1.00		0.4	Circular pit with steep sides and slightly concave base with sloping sides towards the base. Appears to be abutting the Curvilinear featured enclosure
072	Curvilinear feature	Fill of possible pit [071]				Loose mid brown sandy silt with sub-rounded and sub-angular pebbles and stones with a red hue with occasional charcoal flecks and possible packing stones. Probably rapid infilling event.
073	Curvilinear feature	Cut of Curvilinear feature– western section.				Linear Curvilinear feature with slightly curved sides and U – shaped base. Aligned N-S.
074	Curvilinear feature	Fill of Curvilinear featured enclosure [073]				Loose mid brown sandy silt with sub-rounded and sub-angular stones and pebbles with hue and root intrusion
075	House 3 internal feature	Cut of posthole	0.3	0.27	0.25	Sub-circular posthole with steep sides and concave base. Part of inner ring of postholes
076	House 3 internal feature	Fill of posthole [075]				Loose dark grey silt.
077	House 3 internal feature	Cut of posthole	0.2		0.15	Circular posthole with steep sides and conical base, Part of inner ring
078	House 3 internal feature	Fill of posthole				Loose dark grey-brown silt
079	House 3 internal feature	Cut of pit	0.2	0.86	0.05	Linear pit with flat sides and base, possibly part of house construction
080	House 3 internal feature	Fill of pit [079]				Loose brown sand with charcoals
081		Packing stones				Packing stones in posthole [067] c. 7cm diam.
082	House 3 internal feature	Cut of pit	0.2	0.93	0.07	Linear pit with flat sides and flat base, next to [079]
083	House 3 internal feature	Fill of pit				Loose, brown and sandy with some charcoal
084	Curvilinear feature	Cut of pit				Sub-circular pit with sloping sides and concave base, aligned E-W, Cuts the Curvilinear featured enclosure [073]
085	House 3 internal feature	Cut of pit	1	2.6	0.24	Sub-circular pit with steep sloping sides and flat base, circled by several stakeholes and postholes
086	House 3 internal feature	Fill of pit [085]				Loose dark brown sandy silt with bone, pot, charcoal and large stones

Context No.	Feature	Context type	Width / Diam (m)	Length (m)	Depth (m)	Description of Context
087	House 3 internal feature	Cut of posthole	0.2		0.1	Circular posthole with flat base in Slot 3 of ring-ditch
088	House 3 internal feature	Fill of posthole [087]				Loose dark brown silt
089	House 3	Inner ring groove	0.2		0.1-0.2	Curvilinear sloping sides and concave base, aligned NE-SW
090		Fill of pit				Loose, dark brown and sandy with packing stones
091	House 3 internal feature	Cut of posthole	0.26	0.3	0.07	Sub-circular posthole with sloping sides and slightly concave base
092	House 3 internal feature	Fill of posthole [091]				Loose brown and sandy with charcoals
093	House 3 internal feature	Cut of posthole	0.2	0.25	0.06	Sub-circular posthole with slightly sloping sides and slightly concave base
094	House 3 internal feature	Fill of posthole [093]				Loose brown and sandy with charcoals
095	House 3 internal feature	Cut of posthole	0.4		0.2	Circular posthole with steep sides and concave base, on outer edge of N ring-ditch, sealed by (054)
096	House 3 internal feature	Fill of posthole [095]				Dark brown silt with 5% stones, sealed by (054)
097	Curvilinear feature	Fill of pit [084]				Loose mid- dark brown sandy silt with 15% sub-rounded and sub-angular pebbles and stones with occasional charcoal flecks in upper part of context, with red hue and pot. Single fill suggests backfilled fairly rapidly,
098	House 3 internal feature	Cut of a posthole	0.4	0.38	0.12	Sub-circular posthole with sloping sides and concave base, possible support post for internal structure
099	House 3 internal feature	Fill of posthole				Loose grayish brown sandy silt
100	House 3 internal feature	Cut of posthole	0.25	0.3	0.12	Sub-circular posthole with 25 degree slope and flat base
101	House 3 internal feature	Fill of posthole [101]				Loose dark grey silt.
102	House 3 internal feature	Cut of posthole	0.37	0.4	0.16	Sub-circular posthole with sloping sides and concave base, cut by [085]
103	House 3 internal feature	Fill of posthole [102]				Loose, brown and sandy with some charcoals
104	House 3 internal feature	Cut of posthole	0.2	0.25	0.05	Sub-circular posthole with slightly sloping sides and flat base, 1 of 3 postholes surrounding pit [085]
105	House 3 internal	Fill of posthole				Loose, brown and sandy

Context No.	Feature	Context type	Width / Diam (m)	Length (m)	Depth (m)	Description of Context
	feature					
106	Internal feature	Cut of linear feature	0.34	0.3	0.11	Linear feature with steep sides and concave base
107	Internal feature	Fill of linear feature				Loose light/mixed brown sandy silt
108	Inner ring groove	Cut of a posthole	0.5	0.52	0.19	Sub-circular posthole with sloping sides and concave base, abutted by a linear feature
109	Internal feature	Fill of a posthole [108]				Loose light brown sandy silt with some charcoal and possible packing stones
110	Internal feature	Cut of a posthole	0.5	0.4	0.22	Sub-circular posthole with sloping sides and concave base, abutted by [106]
111	Internal feature	Fill of posthole [110]				Loose light brown sandy silt with possible packing stones
112	Curvilinear feature	Cut of pit	1.8	2	0.3-0.4	Sub-circular posthole with steep sides and flat base, cuts Curvilinear feature (115)
113	Curvilinear feature	Fill of large pit				Loose dark brown silt with 10% stones, probably deliberate backfilling
114	Curvilinear feature	Cut of Curvilinear feature (E)	0.2	30+	0.1	Linear Curvilinear feature, continuous feature although some silt build up, cut by pit [112]
115	Curvilinear feature	Fill of Curvilinear feature [114]				Firm dark brown grey silt with 10% stone
116	Curvilinear feature	Cut of pit/posthole	0.8	0.6	0.25-0.3	Sub-circular feature with steep sides and flat base, cut by [112]
117	Curvilinear feature	Fill of pit/posthole [116]				Firm reddish brown silt, looks like one event
118	Internal feature	Cut of a posthole	0.8	0.5	0.15	Sub-circular posthole with sloping sides and concave base, abutted by [120]
119	Internal feature	Fill of posthole [118]				Loose light brown sandy silt
120	Internal feature	Circular posthole	0.5	0.6	0.11	Sub-circular posthole with gradual slope and fairly flat base
121	Internal feature	Fill of posthole [120]				Loose light brown sandy silt
122	Internal feature	Cut of a posthole	0.58	0.54	0.23	Sub-circular posthole with steep sides and irregular base
123	Internal feature	Fill of posthole [122]				Loose light brown sandy silt with pottery and charcoal
124	Internal feature	Cut of a posthole	0.7	0.85	0.15	Sub-circular posthole with gradually sloping sides and flat base, possible replacement for [122]
125	Internal feature	Fill of a posthole [124]				Loose light brown sandy silt
126	External feature	Cut of posthole	0.3	0.4	0.1	Sub-circular posthole with sloping sides and concave base
127	External feature	Fill of posthole [126]				Loose dark brown sandy silt
128	External feature	Cut of posthole	0.15	0.2	0.05	Sub-circular posthole with near vertical sides and flat base

Context No.	Feature	Context type	Width / Diam (m)	Length (m)	Depth (m)	Description of Context
129	External feature	Fill of posthole [128]				Loose dark brown sandy silt
130						UNASSIGNED
131						UNASSIGNED
132	Internal feature	Cut of pit	1.1	1.2	0.4	Sub-circular pit with sloping sides and concave base, close to Curvilinear feature
133	Internal feature	Fill of pit [132]				Loose, dark brown and sandy with lots of charcoals and packing stones (only in N and E section)
134	Internal feature	Fill of pit				Loose, light brown and sandy
135	Curvilinear feature	Cut of posthole	0.3	0.4	0.12	Sub-circular- sub-circular posthole with sloping sides and concave base, aligned E-W, cut into [073], Slot 6
136	Curvilinear feature	Fill of posthole [135]				Loose dark brown sandy silt with small sub-rounded pebbles, very homogenous suggesting rapid backfilling
137	Internal feature	Cut of pit	0.8	0.9	0.15	Cut of circular pit with sloping sides and flat base, in line with 2 others
138	Internal feature	Fill of pit [137]				Loose brown sandy silt with packing stones and some charcoal
139	External feature	Cut of pit	0.8	1.8	0.25-0.3	Linear pit to SW of curvilinear feature
140	External feature	Fill of pit [139]				Firm dark brown silt, probably natural silting
141	External feature	Fill of linear pit [139]				Firm dark brown black silt, charcoal-rich. Possible in-situ burning
142	External feature	Cut of posthole	0.3		0.15	Sub-circular posthole with steep sides and concave base. Part of possible structure on W side of site
143	External feature	Fill of posthole				Firm very dark brown black with 1 stone
144	Internal feature	Cut of a large pit	1.2	1.5	0.57	Sub-circular pit with steeply sloping sides and concave base, possible storage pit
145	Internal feature	Fill of pit [144]				Loose dark brown sandy silt with charcoal, pot and large stones
146	Internal feature	Cut for probable posthole	0.45		0.3	Sub-circular posthole with perceptible sides and concave base, W side damaged possibly due to weathering or levering of post
147	Internal feature	Fill of posthole				Loose dark brown sandy silt with small sub-rounded pebbles with possible packing stones
148	House 3 internal feature	Cut of posthole	0.4	0.7	0.36	Sub-circular posthole with sloping sides and concave base, possibly part of wall construction
149	House 3 internal feature	Fill of posthole [148]				Loose, brown and sandy with packing stones
150	External feature/ Curvilinear feature	Cut of pit				Sub-circular pit with sloping sides and concave base, next to possible pit

Context No.	Feature	Context type	Width / Diam (m)	Length (m)	Depth (m)	Description of Context
151	External feature/ Curvilinear feature	Fill of pit [150]				Loose dark brown sandy silt with packing stones and charcoal
152	House 3 internal feature	Cut of posthole	0.20	0.22	0.10	Sub-circular posthole with perceptible sides and flat base
153	House 3 internal feature	Fill of posthole [152]				Loose dark brown sandy silt with red hue and occasional sub-rounded stones and occasional charcoal flecks
154	External feature	Cut of posthole	0.18	0.22	0.08	Sub-circular posthole with slightly sloping sides and concave base
155	External feature	Fill of posthole [154]				Loose, brown and sandy
156	External feature	Cut of posthole	0.35	0.4	0.09	Sub-circular posthole with steep sides and flat base, possibly associated with western structure
157	External feature	Fill of posthole [157]				Firm dark brown grey silty sand
158	External feature	Cut of pit	0.4	0.5	0.2	Sub-circular pit with 20 degree sides and flat base, possibly associated with western structure
159	External feature	Fill of pit				Firm dark brown silt
160	External feature	Circular posthole	0.19	0.25	0.09	Sub-circular posthole with sloping sides and concave base
161	External feature	Fill of posthole [160]				Loose, brown and sandy
162	External feature	Cut of posthole	0.4	0.8	0.1	Cut of sub-circular posthole with shallow sides and flat base, possibly associated with western structure
163	External feature	Fill of posthole [162]				Firm light brown grey silt with 1 large stone 0.2
164	External feature	Cut of posthole	0.4	0.3	0.2	Sub-circular posthole with 30 degree slope and concave base, possibly associated with western structure
165	External feature	Fill of posthole				Firm dark brown grey silt
166	External feature	Cut of posthole	0.3	0.3	0.05	Sub-circular posthole with sloping sides and flat base, in line with 2 others
167	External feature	Fill of posthole				Loose dark brown sandy silt with small stones and charcoal
168	External feature	Cut of posthole	0.42		0.06	Circular posthole with eroded sides and flat base, possibly associated with western structure
169	External feature	Fill of posthole				Loose light brown stony silt
170	External feature	Cut of posthole	0.4	0.45	0.19	Sub-circular posthole with sloping sides and concave base
171	External feature	Fill of posthole				Loose, brown and sandy
172	External feature	Cut of posthole	0.2	0.23	0.08	Sub-circular posthole with sloping sides and flat base

Context No.	Feature	Context type	Width / Diam (m)	Length (m)	Depth (m)	Description of Context
173	External feature	Fill of posthole				Loose dark brown sandy silt with small stones
174	External feature	Cut of posthole	0.2			Circular posthole with perceptible sides and concave base
175	External feature	Fill of posthole [175]				Loose dark brown sandy silt with very small pebbles and bioturbation
176	External feature	Cut of pit	1		0.15	Circular pit with sloping sides and irregular/flat base
177	External feature	Fill of pit [176]				Loose dark brown sandy silt with charcoal flecks
178	External feature	Cut of posthole	0.3	0.39	0.18	Sub-circular posthole with sloping sides and concave base
179	External feature	Fill of posthole [178]				Loose, brown and sandy
180	External feature	Cut of posthole	0.3-0.35	0.45	0.25	Sub-circular posthole with perceptible sides and concave base, aligned N-S, S side damaged perhaps due to levering of post, homogenous fill suggests rapid backfilling after abandonment
181	External feature	Fill of posthole [180]				Loose mid brown sandy silt with infrequent sub-rounded stones and pebbles with red hue and lots of root damage. Homogenous fill suggests rapid backfilling after abandonment
182	Internal feature	Cut of posthole	0.28	0.33	0.1	Sub-circular posthole with sloping sides and concave base with stones (1 large one)
183	Internal feature	Fill of posthole [182]				Loose brown and sandy with stones
184	External feature	Cut of posthole	0.3	0.3	0.12	Sub-circular posthole with sloping sides and flat base
185	External feature	Fill of posthole [184]				Loose dark brown sandy silt with packing stones
186	External feature	Cut of a pit	0.94	1.05	0.42	Sub-circular pit with steep sides and concave base
187	External feature	Fill of pit [186]				loose dark brown sandy silt, rich in charcoal
188	Internal feature	Cut of pit	0.6	0.78	0.18	Sub-circular pit with sloping sides and slightly concave base
189	Internal feature	Fill of pit [188]				Mid- loose, brown and sandy
190	House 3 internal feature	Cut of posthole	0.2	0.2	0.06	Sub-circular posthole with sloping sides and concave base, 1 of 3 postholes at end of drip gully in line with another posthole and drip gully- possible entrance to house 3
191	House 3 internal feature	Fill of posthole [190]				Loose mid brown sandy silt with charcoal
192	House 3 internal feature	Cut of posthole	0.3	0.3	0.08	Sub-circular posthole with sloping sides and concave base. At end of drip gully, possibly cut by [194]- possible replacement post

Context No.	Feature	Context type	Width / Diam (m)	Length (m)	Depth (m)	Description of Context
193	House 3 internal feature	Fill of posthole [192]				Loose dark brown sandy silt with charcoal
194	House 3 internal feature	Cut of posthole	0.4	0.48	0.15	Sub-circular posthole with sloping sides and concave base. 1 of 3 postholes at end of drip gully- possible entrance to house 3
195	House 3 internal feature	Fill of posthole [194]				Loose dark brown sandy silt with charcoal
196	Internal feature	Cut of pit	0.7	0.9	0.13	Sub-circular pit with gentle slope and flat base, cut by [198]
197	Internal feature	Fill of pit [196]				Loose light brown sand/ stony silt
198	Internal feature	Cut of linear feature	0.4	1.6	0.1	Linear feature with curved sides and flat base, cuts [196]
199	Internal feature	Fill of linear feature [198]				Loose light brown sandy silt
200	Curvilinear feature	Cut of pit/ posthole	0.6-0.7		0.25	Sub-circular feature with perceptible side and flat base. Abuts inside of Curvilinear featured enclosure [114]
201	Curvilinear feature	Fill of pit/posthole [200]				Loose mid- brown sandy silt, very homogenous fill makes it difficult to see if cuts Curvilinear featured enclosure
202	Internal feature	Cut of pit	1	0.55-60	0.08	Sub-circular pit with slightly sloping sides and flat base
203	Internal feature	Fill of pit [202]				Loose brown and sandy with charcoals and pottery
204	Inner ring groove	Inner ring groove	0.15	1.3	0.1	Curvilinear sloping sides and concave base, terminates in posthole [192] with 3 postholes
205	House 3 internal feature	Fill of drip gully				Loose dark brown sandy silt with charcoal
206	Internal feature	Cut of posthole	0.46	0.56	0.3	Sub-circular posthole with sloping sides and concave base
207	Internal feature	Fill of posthole [206]				Mid-loose dark brown and sandy
208	External feature	Cut of posthole	0.4	0.42	0.12	Sub-circular posthole with slightly sloping sides and slightly concave base
209	External feature	Fill of posthole [208]				Loose, brown sand with some charcoals
210	Internal feature	Cut of pit	1.05	1.87	0.13	Sub-sub-circular pit with sloping sides and flat/irregular base, aligned NNE-SSW
211	Internal feature	Fill of pit				Loose mid-dark grey brown silt with <1% charcoal flecks and 2% small-medium sub-rounded- sub-angular stones and flecks of redeposited natural, not homogenous colour, possibly intentionally backfilled/ dumped material.

Context No.	Feature	Context type	Width / Diam (m)	Length (m)	Depth (m)	Description of Context
212	External feature	Cut of posthole	0.25	0.28	0.15	Sub-circular posthole with sloping sides and concave base
213	External feature	Fill of posthole [212]				Loose, brown and sandy
214	External feature	Cut of pit	1.57	2.87	0.2	Curvilinear pit with sloping sides and irregular base, aligned E-W.
215	External feature	Fill of pit [214]				Loose light brown sandy silt with 1% charcoal flecks and medium- large sub-rounded cobbles. Fairly homogenous and poorly sorted. Stones possibly from stone built super structure. Infilled after 2 associated features filled and not in use
216	External feature	Cut of posthole	0.25	0.27	0.23	Sub-circular posthole with sloping sides and concave base
217	External feature	Fill of posthole [216]				Loose, brown and sandy
218	House 3 internal feature	Cut of posthole	0.35	0.4	0.15	Sub-circular posthole with sloping sides and flat base. Disturbed on Se edge possible where post removed
219	House 3 internal feature	Fill of posthole [218]				Loose mid- dark grey brown silt with <1% charcoal flecks and small sub-rounded stones, possible single infilling event
220	External feature	Cut of posthole	0.22	0.25	0.08	Sub-circular posthole with sloping sides and concave base, aligned E-W. Just on N edge of pit [214], probably some kind of wooden structure above pit.
221	External feature	Fill of posthole [220]				Loose light brown sandy silt
222	External feature	Cut of posthole	1.1		0.12	Circular posthole with sloping sides and fairly flat base, at terminal end of pit, 1 of several postholes or stakeholes that encircle [214]
223	External feature	Fill of posthole [222]				Loose light brown sandy silt with some charcoal flecks
224		Unassigned				
225		Unassigned				
226	Internal feature	Cut of a pit	0.9		0.18	Circular pit with sloping sides and flat base
227	House 3 internal feature	Fill of pit				Loose grey brown silty sandy with occasional charcoal flecks, pottery and packing stones
228	Internal feature	Cut of a pit	0.56	1.3	0.38	Rectilinear pit with sloping sides and concave base, aligned NW-SE, associated with [278]
229	Internal feature	Upper fill of pit [228] and posthole [278]				Loose grey brown silty sand with occasional charcoal flecks and pot
230	Internal feature	Primary fill of pit [228] and posthole [278]				Loose orange brown sand with occasional flecks and pot, possibly redeposited natural

Context No.	Feature	Context type	Width / Diam (m)	Length (m)	Depth (m)	Description of Context
231	External feature	Cut of posthole	0.42		0.15	Circular posthole with vertical sides and flat base
232	External feature	Fill of posthole [231]				Loose mid-dark grey brown silt with charcoal and 1% small sub-rounded stones, quite homogenous, post probably removed – natural silting or backfilled
233	External feature	Possible packing stones				Medium sub-rounded stones
234	Internal feature	Cut of posthole	0.25	0.28	0.14	Sub-circular posthole with sloping sides and slightly concave base
235	Internal feature	Fill of posthole [234]				Loose brown and sandy
236	External feature	Cut of stakehole	0.12		0.07	Circular stakehole with steep sloping sides and concave base. Possibly part of enclosing structure for pit [214]
237	External feature	Fill of stakehole [236]				Loose dark brown sandy silt, different to [215] so possibly earlier infilling event
238	Internal feature	Cut of posthole	0.3	0.32	0.11	Sub-circular posthole with sloping sides and concave base
239	Internal feature	Fill of posthole [238]				Loose, dark brown and sandy
240	Internal feature	Cut of posthole	0.31	0.47	0.16	Sub-circular posthole with sloping sides and slightly concave base, cut by [238]
241	Internal feature	Fill of posthole [240]				Loose light brown and sandy
242	Internal feature	Cut of posthole	0.38	0.4	0.15	Circular posthole with sloping sides and concave base
243	Internal feature	Fill of posthole [242]				Firmly compacted light brown silt
244	Internal feature	Cut of posthole	0.41	0.4	0.18	Sub-circular posthole with sloping sides and concave base, cuts or is cut by [246]
245	Internal feature	Fill of posthole				Loose dark brown sand with stone inclusions
246	Internal feature	Cut of posthole	0.41	0.75	0.16	Sub-circular posthole with sloping sides and concave base
247	Internal feature	Fill of posthole [246]				Loose dark brown and sandy with stones
248	Internal feature	Cut of posthole	0.4	0.6	0.16	Sub-circular posthole with sloping sides and concave base, associated with [244] and [246], possibly part of Curvilinear feature
249	Internal feature	Fill of posthole [248]	0.4	0.6	0.16	Loose dark brown and sandy with a few stones
250	Internal feature	Cut of posthole	0.68	0.7	0.365	Circular posthole with sloping sides and concave base, associated with [244], [246] and [248], possibly part of Curvilinear feature
251	Internal feature	Fill of posthole [250]				Loose, dark brown and sandy

Context No.	Feature	Context type	Width / Diam (m)	Length (m)	Depth (m)	Description of Context
252	Internal feature	Cut of posthole	0.35	0.4	0.11	Sub-circular posthole with sloping sides and flat base, aligned NE-SW, on SW edge of pit [214]
253	Internal feature	Fill of posthole [252]				Loose dark brown sandy silt, different infilling event than (215) and (221)
254	External feature	Cut of posthole	0.48		0.1	Circular posthole with sloping sides and flat base
255	External feature	Fill of posthole [254]				Loose dark brown sandy silt with <1% small sub-rounded stones, fairly homogenous, probably single natural silting but quite dark so possibly topsoil backfill
256	External feature	Cut of pit/posthole	0.4	0.44	0.05	Sub-circular pit/posthole with sloping sides and flat base, aligned NE-SW
257	External feature	Fill of pit/posthole [256]				Loose light brown silt with <1% charcoal flecks and small sub-rounded stones and pot. Homogenous fill probably due to natural silting.
258	External feature	Cut of possible pit	0.9	1.05	0.19	Sub-circular feature with sloping sides and slightly concave base
259	External feature	Fill of possible pit				Loose, dark brown and sandy
260	External feature	Cut of posthole	0.2	0.25	0.1	Sub-circular posthole with sloping sides and slightly concave base. Aligned N-S
261	External feature	Fill of posthole [260]				Loose light brown silt with <1% charcoal flecks and small sub-rounded stones
262	External feature	Cut of posthole	0.6	0.72	0.16	Sub-circular posthole with slightly sloping sides and slightly concave base
263	External feature	Fill of posthole [262]				Loose dark brown and sandy with some stones
264	External feature	Cut of posthole	0.55	0.6	0.12	Sub-circular posthole with sloping sides and slightly concave base
265	External feature	Fill of posthole [264]				loose dark brown and sandy
266	External feature	Cut of pit	0.32	0.64	0.12	Sub-sub-circular pit with sloping sides and sloping-concave base, aligned N-S. Disturbed by burrows
267	External feature	Fill of pit [266]				Loose light-mid peachy grey brown silt with <1% charcoal and small sub-rounded stones. Quite mixed and mottled with some bioturbation
268	External feature	Cut of posthole	0.26	0.33	0.11	Sub-circular posthole with sloping sides and concave base, aligned ESE-WNW
269	External feature	Fill of posthole [268]				Loose light-mid brown silt with <1% small sub-rounded stones and charcoal flecks
270	External feature	Cut of posthole	0.35	0.4	0.13	Sub-circular posthole and sloping sides with concave base, aligned NNE-SSW, adjacent to [268]
271	External feature	Fill of posthole [271]				Loose mid-brown silt with <1% charcoal and small-medium sub-rounded stones

Context No.	Feature	Context type	Width / Diam (m)	Length (m)	Depth (m)	Description of Context
272						UNASSIGNED
273						UNASSIGNED
274	External feature	Cut of pit	0.65	0.87	0.1	Sub-sub-circular pit with sloping sides and flat base, aligned NW-SE
275	External feature	Fill of pit [274]				Loose mid-brown silt with large cobbles on surface but all loose and mottled on surface- machine disturbance
276	External feature	Cut of posthole	0.30	0.34	0.22	Sub-circular posthole with vertical sides and concave
277	Internal feature	Fill of posthole [276]				Loose mid-brown silt with <1% charcoal flecks and small sub-rounded stones, homogenous fill, probably natural silting after post removed, sub-circular
278	Outer ring of pits	Cut of posthole	0.50	0.40	0.31	Sub-circular posthole with sloping sides and concave base
279	Internal feature	Cut of pit	0.80	0.90	0.30	Sub-circular pit aligned N-S. Probably associated with arc of pits [071] to [120]
280	Internal feature	Fill of [279]				unknown
281	External feature	Cut of linear feature	0.15	4.0		Unexcavated truncated linear feature outside Curvilinear feature [073]. Unclear of function.
282	External feature	Fill of [281]				Loose mid grey brown silt
283	Ring groove	Cut of inner ring groove	0.10	1.5	0.02	Small section of possible ring groove
284	External feature	Linear feature				Same as [281]

APPENDIX 3: Colour Slide Photographic Register Houses 2, 4, 5 and 6

Film 53

Frame	Contexts/Description	Taken from	Conditions
1	Registration shot?		
10-11	Area A W entrance	W	O/C
12-13	Area B NW facing section of pit [005]	NW	Rain
14-15	NE facing section [005]	NE	Rain
16-17	SW facing section [005]	SW	Rain
18-19	SE facing section [005]	SE	Rain
20-21	Post-ex shot of pit [005]	NE	Rain
22-24	Post-ex shot of pit [005]	SW	Rain
25-26	NW facing section of ditch [008] House 4 Slot 1	NW	Rain
27-28	E facing section of ditch [008] House 4 Slot 1	E	Rain
29-30	Post-ex shot Slot 1 House 4	SE	Rain
31-32	SE facing section of post hole [011] in Slot 1 House 4	SE	Rain
33-34	NW facing section of pit [013] and gully [015]	NW	Rain
35-36	SE facing section gully [015]	SE	Rain

Film 54

Frame	Contexts/Description	Taken from	Conditions
1	Registration shot		
2-3	SE facing section of drip gully [015]	SE	O/C
4-5	WNW facing section [017]	WNW	O/C
6-7	N facing section [019]	N	O/C
8-9	W facing section [021]	W	O/C
10-11	W facing section [023]	W	O/C
12-13	NNE facing section [026]	NNE	O/C
14-15	NNE facing section [028]	NNE	O/C
16-17	NE facing section [030]	NE	O/C
18-19	SE facing section [032]	SE	O/C
20-21	SE facing section [034]	SE	O/C
22-23	NNE facing section [036]	NNE	O/C
24-25	ESE facing section [038]	ESE	O/C
26-27	SE facing section [040]	SE	O/C
28-29	SE facing section [042]	SE	O/C
30-31	SW facing section of ditch [008] Slot 2 House 4	SW	Rain
32-33	S facing section of post hole [050] Slot 2 House 4	S	Rain
34-36	Post-ex shot Slot 2 House 4	SW	Rain

Film 55

Frame	Contexts/Description	Taken from	Conditions
1	Registration shot		
2-3	House 4 Slot 3 (052)	W	Rain
4-5	Post hole [056]	NE	Rain
6-7	Post hole [062]	S	Rain
8-9	Post hole [060]	SE	Rain
10-11	Post hole [058]	SE	Rain
12-13			
14-15	SE facing section [066]	SE	Rain
16-17	S facing section of Slot 4 House 4	S	Rain
18-19	S facing section of Slot 4 House 4	S	Rain
20-21	S facing section [086] (087)	S	Dull
22-23	S facing section [080] (081)	S	Dull
24-25	S facing section [078] (079)	S	Dull
26-27	S facing section [072] (073)	S	Dull
28-29	SW facing section [084] (085)	SW	Dull
30-31	S facing section [074] (075)	S	Dull
32-33	W facing section [076] (077)	W	Low sun
34-35	N facing section [070] (071)	N	Low sun
36	General working shot		

Film 56

Frame	Contexts/Description	Taken from	Conditions
1	Registration shot		
2-3	N facing section [068] (069)	N	Low Sun
4-5	NE facing section [076] (077)	NE	Low Sun
6-7	S facing section [082] (083)	S	Low Sun
8-9	E facing section of post hole [088]	E	Low Sun
10-11	NNE facing section of gully [088]	NNE	Low Sun
12-13	NNE facing section of post hole [090]	NNE	Low Sun
14-15	SSW facing section [092]	SSW	Low Sun
16-17	Overall post-ex shot of gully [015], [092] and [0900]	WNW	Low Sun

18-19	N facing section of gully	N	Low Sun
20-21	S facing section of gully	S	Low Sun
22-23	NE facing section of gully	NE	Low Sun
24-25	SE facing section of gully	SE	Low Sun
26-27	N facing section of post hole [119]	N	Low Sun
28-29	NE facing section [015]	NE	Low Sun
30-31	SW facing section [015]	SW	Low Sun
32-33	SE facing section of Slot 3 House 4	SE	Low Sun
34-35	N facing section of Slot 3 House 4	W	Low Sun
36	[084] Post pad in-situ	S	Dull

Film 57

Frame	Contexts/Description	Taken from	Conditions
1	Registration shot		
2-3	SE facing section [094]	SE	Low sun/bright
4-5	SSW facing section [115]	SSW	Low sun/bright
6-7	W facing section [113]	W	Low sun/bright
8-9	SW facing section [111] and [109]	SW	Low sun/bright
10-11	W facing section [117]	W	Low sun/bright
12-13	SSW facing section [106]	SSW	Low sun/bright
14-15	SW facing section [102]	SW	Low sun/bright
16-17	SW facing section [124]	SW	Low sun/bright
18-19	SE facing section [003]	SE	Low sun/bright
20-21	SSE facing section [100]	SSE	Low sun/bright
22-23	S facing section [096]	S	Low sun/bright
24-25	SE facing section [098]	SE	Low sun/bright
26-27	SE facing section [044]	SE	Low sun/bright
28-29	Post-ex shot [136]	SW	Low sun/bright
30-31	E facing section [126] and [128]	E	Rain
32-33	S facing section [138]	S	Rain
34-36	NE facing section [130]	NE	Rain

Film 58

Frame	Contexts/Description	Taken from	Conditions
1	Registration shot		
2-3	SE facing section [132]	SE	Rain
4-5	N facing [134]	N	Rain
6-7	NE facing section of pit [128]	NE	Rain
8-9	N facing section of pit [128]	N	Rain
10-11	E facing section of NE Quad [134]	E	Rain
12-13	W facing section of SW Quad [134]	W	Rain
14-15	S facing section of SW Quad [134]	S	Rain
16-17	N facing section of NE Quad [134]	N	Rain
18-19	SW facing section of pit [128]	SE	Rain
20-21	S facing section of [128]	S	Rain
22-23	Post-ex shot [121]	N	Rain
24-25	Post-ex shot [104]	SE	Rain
26-27	Post-ex [146] and [148]	N	Clear
28-29	Pre-ex shot House 5	S	Low sun
30-31	Area A OSL Tin in-situ, Palisade Slot 3 N	W	Low sun
32-33	NE facing section [153]	NE	Low sun
34-35	E facing section [155]	E	Low sun

Film 59

Frame	Contexts/Description	Taken	Conditions
-------	----------------------	-------	------------

		from	
1	Registration shot		
2-3	E facing section [157]	E	Clear/low sun
4-5	S facing section [159]	S	Clear/low sun
6-7	SE facing section [161]	SE	Clear/low sun
8-9	SE facing section [166]	SE	Rain
10-11	NE facing section [168]	NE	Rain
12-13	NE facing section [168]	NE	Rain
14-15	SE facing section [150]	SE	Rain
16-17	S facing section [171]	S	Rain
18-19	S facing section [173]	S	Rain
20-21	S facing section [175]	S	Rain
22-23	S facing section [177]	S	Rain
24-25	SE facing section [179]	SE	Rain
26-27	S facing section [181]	S	Rain
28-29	NW facing section [164] NW Quad	NW	Rain
30-31	NE facing section [164] NW Quad	NE	Rain
32-33	SE facing section [164] SE Quad	SE	Rain
34-35	SW facing section [164] SE Quad	SW	Rain
36	W facing section [150], Slot 2	W	Rain

Film 60

Frame	Contexts/Description	Taken from	Conditions
1	Registration shot		
2	W facing section [150] Slot 2	W	Rain
3-4	SSW facing section of pit [190]	WSW	Rain
5-6	General shot of House 5	S	Dull
7-8	General shot of House 5	SE	Dull
9-10	N facing section of post hole [193] and gully [197]	N	Dull
11-12	E facing section of post hole [195]	E	Dull
13-14	Stones (166) in Slot 3 House 5	N	Dull
15	Stones (166) in Slot 3 House 5	N	Dull
16-17	Packing stones (203) in post hole [201]	SW	O/C
18-19	E facing section [204]	E	O/C
20-21	E facing section [204]	E	O/C
22-23	SSW facing section [192] Slot 1	SSW	O/C
24-25	ESE facing section [192] Slot 1	ESE	O/C
26-27	UNKNOWN-NOTHING WRITTEN		
28-29	NE facing section Of post hole [199] Slot 3 House 5	NE	Rain
30-31	E facing section Slot 3 House 5	E	Rain
32-33	NE facing section of ditch Slot 3 House 5	NE	Rain
34-35	NE facing section of ditch Slot 3 House 5	NE	Rain
36	W facing section of [112]	W	O/C

Film 61

Frame	Contexts/Description	Taken from	Conditions
1-2	Registration shot	-	-
3	W facing section of [112]	W	Overcast
4-5	Post-ex shot of [220]	ENE	Bright
6-7	E facing section of [218]	E	Bright
8-9	S section of pit [214]	S	Bright
10-11	W section of post hole [216]	W	Bright
12-13	Posthole [222]	E	Bright
14-15	Posthole [224]	S	Bright
16-17	Palisade, Slot 1, fills 209-10 exc. stones 211	SSW	Overcast

18-19	Palisade, Slot 1, fills 209-10 exc. stones 211	WNW	Overcast
20-21	Post-ex shot of [236], stake holes [234]	NE	Rain
22-23	NE section of [238]	NE	Rain
24-25	NE section of [228]	NE	Rain
26-27	lost		
28	lost		
29-30	SE section of [236]	SE	Rain
31-32	E section of [230]	SE	Rain

Film 62

Frame	Contexts/Description	Taken from	Conditions
1			
2-3	Post hole [232]	N	Rain
4-5	Post hole [240]	N	Rain
6-7	NW facing section of [165], Slot 3, house 5	NW	Rain
8-9	ES facing section of [165], Slot 3, house 5	ES	Rain
10-11	Palisade 192, Slot 1, shot of basal	SSW	Dull
12-13	Palisade 192, Slot 1, WNW facing section of [209-11]	WNW	Dull
14-15	Palisade 192, Slot 1, ESE facing section of [209-11]	ESE	Dull
16-17	Palisade 192, Slot 1, WNW facing section of [209-11]	WNW	Dull
18-19	Plan of [242] and [244] showing fills (243), (245), (247) and packing stones (246)	E	Overcast
20-21	SE facing section of [192], Slot 2, palisade, house 3	SE	Rain
22-23	NW facing section of [192], Slot 2, palisade, house 5	NW	Rain
24-25	E facing section of [242] and [244]	E	Dull
26-27	N section of [192], Slot 3	N	Rain
28-29	N section of [192], Slot extension	N	Rain
30-31	E facing section of [192], Slot 4	W	Rain
32-33	W facing section of [192], Slot 4	W	Rain
34-35	SW facing section of post hole [248]	SW	Rain

Film 63

Frame	Contexts/Description	Taken from	Conditions
1-2			
3-4	N facing section of [151]	N	Overcast
5-6	N facing section of [252]	N	Overcast
7-8	Palisade 192, Slot 5, W facing section of [210], [211], [192]	W	Dull
9-10	Palisade 192, Slot 5, W facing section of [210], [211], [192], [250] and [251]	E	Dull
11-12	Post-ex shot of stake-holes [254] and [256]	NNW	Overcast
13-14	W facing section of possible post hole of [258] showing packing stones (260)		Overcast
15-16	SW section [265]	SW	Clear
17-18	NE section of [267]	NW	Low sun
19-20-21	Pre-ex shot of [263]	E	Low sun
22-23	Post-ex shot of [263]	E	Low sun
24-25	NW facing section of [258]	NW	

Film 64

Frame	Contexts/Description	Taken from	Conditions
1	Registration shot	-	Bright/sun
2-3	S facing section of [291]	S	Bright/sun
4-5	S facing section of [295]	S	Bright/sun

6-7	S facing section of [293]	S	Bright/sun
8-9	SE facing section of [297]	SE	Bright/sun
10-11	NE facing section of [287]	NE	Bright/sun
12-13	SE facing section of [285]	SE	Bright/sun
14-15	SE facing section of [289]	SE	Bright/sun
16-17	WSW facing section of [299]	WSW	Bright/sun
18-19	S facing section of [273]	S	Bright/sun
20-21	S facing section of [275]	S	Bright/sun
22-23	SSW facing section of [277]	SSW	Bright/sun
24-25	NE facing section of [289]	NE	Bright/sun
26-27	SE facing section of [279]	SE	Bright/sun
28-29	W facing section of [283]	W	Bright/sun
30-31	W facing section of [271]	W	Bright/sun
32-33	W facing section of [270]	W	Bright/sun
34-35	NW facing section of [301]	NW	Bright/sun

Film 65

Frame	Contexts/Description	Taken from	Conditions
1	Registration shot	-	-
2-3	S facing section of post hole (305)	S	Sun
4-5	NE facing section of posthole (307)	NE	Sun
6-7	SW facing section of [309]	SW	Sun
8-9	NE facing section [311] and [313]	NE	Sun
10-11	W facing section of [315]	W	Sun
12-13	Slot 1, house 4	NW	Low sun
14-15	E facing section of post hole [323]	E	Low sun
16-17	N facing section of posthole [325]	N	Low sun
18-19	E facing section of post hole [327]	E	Low sun
20-21	NE facing section of [329]	NE	Low sun
22-23	E facing section of post hole [331]	E	Low sun
24-25	S facing section [335]	S	Low sun
26-27	W facing section of [333]	W	Low sun
28-29	N facing section of post hole[341]	N	Low sun
30-31	N facing section of post hole [337]	N	Low sun
32-33	E facing section of post hole [339]	E	Low sun
34-35	E facing section of post hole [343]	E	Low sun

Film 66

Frame	Contexts/Description	Taken from	Conditions
1	Registration shot	-	-
2-3	NW facing section of [345]	NW	Frosty
4-5	N facing section [347]	N	Frosty
6-7	NNE facing section of [351]	NNE	Frosty
8-9	NNE facing section of [349]	NNE	Frosty
10-11	S section of [353]	S	Frosty
12-13	SE section of [355]	SE	Frosty
14-15	N facing section of [357]	W	Frosty
16-17	NE facing section of [384] and [359]	NE	Frosty
18-19	W facing section of [361]	W	Frosty
20-21	N facing section of [363]	N	Frosty
22-23	N facing section of [365]	N	Frosty
24-25	SW facing section of [303]	SW	Frosty
26-27	NW facing section of [303]	NW	Frosty
28-29	NE facing section of [303]	NE	Frosty
30-31	SE facing section of [303]	SE	Frosty

32-33	Pottery <i>in situ</i> in balk [303]	SW	Frosty
34-35	E facing section of post hole[386]	E	Frosty

Film 67

Frame	Contexts/Description	Taken from	Conditions
1	Registration shot	-	-
2-3	S facing section of post hole [392]	S	Low sun/frosty
4-5	E facing section of post hole [390]	E	Low sun/frosty
6-7	SE facing section of [388]	SE	Low sun/frosty
8-9	E facing section of [394]	E	Overcast
10-11	Post-ex shot of Slot 2, house 2	S	Overcast
12-13	SE facing section of [378], Slot 2	SE	Overcast
14-15	NW facing section of [378], Slot 2	NW	Overcast
16-17	SE facing section of [397]	SE	Overcast
18-19	SW facing section of [399]	SW	Overcast
20-21	NW facing section of [401]	NW	Overcast
22-23	N facing section of [403]	N	Overcast
24-25	NE facing section of Slot 4, house 2	NE	Overcast
26-27	S facing section of Slot 4, house 2	S	Overcast
28-29	Pot in Slot 5, house 2	E	Overcast
30-31	Pot in Slot 5, house 2	W	Overcast
32-33	NW facing section of [082] in situ, [005] pit	NW	Overcast
34-35	SSW facing section of [411]	SSW	Overcast

Film 68

Frame	Contexts/Description	Taken from	Conditions
1	Registration shot	-	-
2-3	SE facing section of [409]	SE	Overcast
4-5	SE facing section of [413]	SE	Overcast
6-7	SE facing section of [381]	SE	Overcast
8-9	S facing section of pit [421], Slot 2, house 2	S	Overcast
10-11	Pre-ex plan of post hole [418], Slot 6, house 2	-	Overcast
12-13	SE section [405], Slot 3	SE	Overcast
14-15	Large KB tin, Slot 7, house 4	E	Overcast
16-17	NE facing section in house 2, Slot 5	NE	Overcast
18-19	S facing section in house 2, Slot 5	S	Overcast
20-21	S facing section in house 2, Slot 5	S	Overcast
22-23	Post-ex shot of [421]	E	Overcast
24-25	N facing section of post hole [423] showing packing stones (425)	N	Overcast
26-27	SE facing section of Slot 6, house 2	SE	Overcast
28-29	N facing section of Slot 6, house 2	N	Overcast
30-31	N facing section of post hole [430]	N	Overcast
32-33	NW facing section of [429]	NW	Low sun
34-35	NE facing section of [433]	NE	Overcast

Film 69

Shot	Contexts/Description	Taken from	Conditions
1	Registration shot	-	-
2-3	NW facing section [429] [428]	NW	Overcast
4-5	NE facing section [433] [432]	NE	Overcast
4	UNUSED		
5	UNUSED		
6	UNUSED		

7	UNUSED		
8-9	N facing section of Slot 6, House 2 [417]	N	Overcast
10	UNUSED		
11	UNUSED		
12-13	N facing section of posthole [430] [431]	N	Overcast
14-15	S facing section of pit [442]	S	Overcast
16-17	N facing section of posthole [423]	N	Overcast
18-19	SW section [434]	SW	Overcast
20-21	SE section [436]	SE	Overcast
22-23	SE section [438]	SE	Overcast
24-25	N section [440]	N	Overcast
26-27	NW facing section [444]	NW	Overcast
28-29	E facing section [446]	E	Overcast
30-31	Post-ex of [297]	S	Overcast
32-33	N Facing section of posthole [448]	N	Overcast

Film 70

Shot	Contexts/Description	Taken from	Conditions
1	Registration shot	-	-
2-3	N section of pit [442]	N	Sunny
4	Packing stones in Slot 6, House 2	S	Sunny
5	Next to section SE Slot 6, House 2	S	Sunny
6-7	Post-ex of pit [428], House 2	N	Frozen
8-9	Post-ex of pit [353], House 2	S	Frozen
10-11	E facing section [450]	E	Frozen
12-13	Post-ex of posthole [432], House 2	NE	Frozen
14-15	Post-ex of posthole [365], House 2	NE	Frozen
16-17	Post-ex [450]	NE	Frozen
18-19	Post-ex [446]	N	Frozen
20-21	Post-ex [44]	N	Frozen
22-23	Post-ex [440]	N	Frozen
24-25	Post-ex of pit [303], House 2	W	Frozen
26-27	NW facing section [426], Slot 1A, House 2	NW	Frozen
28-29	SW facing section [377], Slot 1, House 2	SW	Frozen
30-31	NNW facing section [377], [452], Slot 1, House 2	NNW	Frozen
32-33	S section of posthole [454], House 2	S	Frozen
34-36	W section of posthole [456], House 2	W	Frozen

Film 71

Shot	Contexts/Description	Taken from	Conditions
1	Registration shot		
2-3	SW section of posthole [458]	SW	Frozen
4-5	SW facing section of posthole [460], Slot 7, House 2	SW	Frozen
6-7	SW facing section of posthole [462], Slot 7, House 2	SW	Frozen
8-9	SW facing section Slot 7, House 2	SW	Dull
10-11	NW facing section Slot 2, House 2	NW	Dull
12-13	Post-ex of posthole [273] House 2	S	Dull / Frozen
14-15	Post-ex posthole [275], House 2	S	Dull / Frozen
16-17	Post-ex pit [277], House 2	S	Dull / Frozen
18-19	Post-ex pit [281], House 2	S	Dull / Frozen
20-21	Post-ex pit [279], House 2	S	Dull / Frozen
22-23	Post-ex pit [291], House 2	S	Dull / Frozen
24-25	Post-ex of posthole [448] [449]	N	Dull / Frozen
26-27	Post-ex of posthole [339] [340]	E	Dull / Frozen
28-29	Post-ex of posthole [337] [338]	NE	Dull / Frozen

30-31	Post-ex of posthole [384] [385]	N	Dull / Frozen
32-33	Post-ex of posthole [359] [360]	N	Dull / Frozen
34-35	Post-ex of posthole [418] [419]	N	Dull / Frozen

Film 72

Shot	Contexts/Description	Taken from	Conditions
1	Registration shot	-	-
2-3	Post-ex [283]	SW	Frozen
4-5	Post-ex [271]	S	Frozen
6-7	Post-ex [458]	W	Frozen
8-9	Post-ex [270]	W	Frozen
10-11	Post-ex [456]	W	Frozen
12-13	Post-ex [454]	S	Frozen
14-15	Post-ex posthole [355] (356)	E	Frozen
16-17	Post-ex posthole [357] (358)	N	Frozen
18-19	Post-ex posthole [361] (362)	NE	Frozen
20-21	Post-ex posthole [363] (364)	N	Frozen
22-23	Post-ex posthole [349]	N	Frozen
24-25	Post-ex posthole [351]	N	Frozen
26-27	Post-ex posthole [347]	N	Frozen
28-29	Post-ex posthole [345]	SW	Frozen
30-31	S facing section of posthole [465]	S	Frozen
32-33	NE facing section of [377], Slot 1	NE	Frozen
34-35	Post-ex of posthole [343] (344)	E	Frozen

Film 73

Shot	Contexts/Description	Taken from	Conditions
1	Registration shot	-	-
2-3	Post-ex post hole [305] (306)	S	Overcast
4-5	Post-ex post hole [388] (389)	S	Overcast
6-7	Post-ex post hole [295] (296)	S	Overcast
8-9	NW facing section of post hole [467] (468)	NW	Overcast
10-11	NW facing section of post hole [469] (470)	NW	Overcast
12-13	N facing section of post hole [471] (472)	N	Overcast
14-15	S facing section of post hole [399] (400)	S	Overcast
16-17	Post-ex post hole [462] (463)	E	Overcast
18-19	Post-ex post hole [460] (461)	S	Overcast
20-21	Post-ex post hole [465] (466)	E	Overcast
22-23	NNW facing section of [377], Slot 1	NNW	Overcast
24-25	Post-ex post hole [423]	NNW	Overcast
26-27	Post-ex shot of stake-hole	E	Overcast
28/31	Post-ex of [438]	S	Overcast
29/30	void	-	-
32-33	Post-ex of 436	S	Overcast

Film 74

Shot	Contexts/Description	Taken from	Conditions
1	Registration shot	-	-
2-3	Post-ex post hole [403]	S	Overcast
4-5	Post-ex post hole [401]	S	Overcast
6-7	Post-ex pit [399]	W	Overcast
8-9	NE facing section of post hole [477]	NE	Overcast
10-11	NE facing section of post hole [479]	NE	Overcast
12-13	Post-ex post hole [479]	NE	Overcast

14-15	Post-ex post hole [477]	NE	Overcast
16-17	Post-ex post hole [323]	E	Overcast
18-19	Post-ex post hole [325]	E	Overcast
20-21	Post-ex post hole [307]	N	Overcast
22-23	S facing section of post hole [481] (482)	S	Overcast
24-25	Post-ex post hole [327]	E	Overcast
26	Post ex post hole		

Film 75

Shot	Contexts/Description	Taken from	Conditions
1-2	Registration shot	-	-
3-4	Post-ex posthole [329]	NE	Overcast
5-6	Post-ex of stake hole [475]	W	Overcast
7-8	Shot of post hole [452] showing packing stones (483)	NNW	Overcast
9	Post-ex post hole [471]	N	Overcast
10	Post-ex post hole [467]	N	Overcast
11	Post-ex post hole [469]	N	Overcast
12	UNUSED		
13	UNUSED		
14	UNUSED		
15	UNUSED		
16-17	Post-ex post hole [452]	NNW	Overcast
18-19	SW of post hole [484]	SW	Overcast
20-21	Post-ex of post hole [481] (482)	S	Overcast
22-23	S facing section of [486], house 2	S	Overcast
24-25	W facing section of [486], house 2	W	Overcast
26-27	Post-ex of post hole [484]	SW	Overcast
28-29	Post-ex small pit [486], house 2	W	Overcast
30-31	SE facing section of [490]	SE	Overcast
32-33	S facing section of [492]	S	Overcast
34-35	E facing section of post hole [500], house 6	E	Overcast
36-37	SE facing section of post hole [498], house 6	SE	Overcast

Film 76

Shot	Contexts/Description	Taken from	Conditions
1	Registration shot	-	-
2-3	W facing section of post hole [497]	W	Foggy
4-5	W facing section of post hole [495]	W	Foggy
6-7	WWSW facing section of [489] and [502]	W	Foggy
8-9	Pre-ex shot of [504]	WSW	Foggy
10-11	S facing section pit of [507], house 6	S	Foggy
12-13	S facing section of post hole [509], house 6	S	Foggy
14-15	W facing section of [504],	S	Foggy
16-17	S facing section of post hole [511]	S	Foggy
18-19	SE facing section of post hole [513]	SE	Foggy
20-21	SE facing section of posthole [515], house 6	SE	Foggy
22-23	NE facing section of [517]	NE	Foggy
24-25	E facing section of post hole [519] [520]	E	Dull /overcast
26-27	NW section of pit [519] and [520]	NW	Dull/overcast
28-29	W facing section of [527]	W	Dull/overcast
30-31	N facing section of [525]	N	Dull/overcast
32-33	E facing section of [530]	E	Frozen/fog
34-35	W section of pit [532] with packing stones	W	Frozen/fog

Film 77

Shot	Contexts/Description	Taken from	Conditions
1	Registration shot	-	-
2-3	N facing section of [505], NW quadrant	N	Icy
4-5	E facing section of [538] (508)	W	Icy
6-7	SW facing section of pit [540], house 6	SW	Icy
8-9	W facing section of pit [532]	W	Icy

Film 78

Shot	Contexts/Description	Taken from	Conditions
1	Registration shot	-	-
2-3	N section of post hole [545], house 6	N	Snow
4-5	E facing section of post hole [547]	E	Snow
6-7	SW facing section of pit [540] and [549]	SW	Snow
8-9	NE facing section of pit [543]	NE	Dull
10-11	W facing section of post hole [551], house 6	W	Dull
12-13	E facing section of post hole [553], house 6	E	Dull
14-15	SW facing section of post hole [555]	SW	Dull
16-17	SW facing section of post hole [557]	SW	Dull
18-19	E facing section of post hole [559]	E	Dull
20-21	NNE facing section of [561]	NNE	Overcast
22-23	S facing section of post hole [563]	S	Dull
24-25	S facing section of post hole [565]	S	Dull
26-27	S facing section of post hole [567]	S	Dull
28-29	SE section of post hole [569]	SE	Dull
30-31	SE section of post hole [571]	SE	Dull
32-33	ESE facing section of [573]	ESE	Low light
34	S facing section of pit [575]	S	Low light

Film 97

Frame	Contexts/Description	Taken from	Conditions
	Post ex of areas B then C		

APPENDIX 4: Colour Slide Photographic Register House 3**Film 79**

Shot	Contexts/Description	Taken from	Conditions
1	Registration shot	-	-
2	S facing section of pit [575] Slot 1	S	Bright
3-4	E facing section of pit [575], Slot 2 NE quadrant	E	Bright
5-6	N facing section of p/h [577]	N	Bright
7-8	W facing section of pit [575], Slot 2, SW quadrant	W	Bright
9-10	SW facing section of pit [587]	SW	Bright
11-12	SW facing section of p/h [592] and [585]	SW	Overcast
13-14	E facing section of p/h [579]	E	Overcast
15-16	Post-ex shot of p/h [589]	W	Overcast
17-18	SW facing section of p/h	SW	Overcast
House 3			
19-20	E facing section of [003], house 3	E	Overcast
21-22	W facing section of [005], house 3	W	Overcast
23-24	WSW facing section of [007], house 3	WSW	Overcast

25-26	N facing section of [015], NE quadrant	N	Bright
27-28	NE facing section of [015], NE quadrant	NE	Bright
29-30	W facing section of post hole [017]	W	Bright
31-32	E facing section of p/h [011]	E	Dull
33-34	NE facing section of p/h [013]	NE	Dull

Film 80

Shot	Contexts/Description	Taken from	Conditions
1-2	Post-ex shot of [007]	SW	Bright
3	Registration shot	-	-
4-5	Post-ex shot of p/h [005], house 3	W	Bright
6-7	Post-ex shot of [011]	S	Bright
8-9	Post-ex shot of [013]	S	Bright
10-11	W facing section of p/h [035] and [037]	W	Bright
12-13	W facing section of p/h [039]	W	Bright
14-15	Post-ex shot of p/h [017]	W	Bright
16-17	N facing section of p/h [019], house 3	N	Bright
18-19	ESE facing section of [021]	ESE	Bright
20-21	S facing section of [023]	S	Bright
22-23	SW facing section of [027]	SW	Bright
24-25	SW facing section of [025]	SW	Bright
26-27	N facing section of p/h [029]	N	Bright
28-29	SW facing section of p/h [031]	SW	Bright
30-31	E facing section of [033]	E	Bright
32-33	N facing section of p/h [041]	N	Bright
34-35	N facing section of p/h [043]	N	Bright

Film 81

Shot	Contexts/Description	Taken from	Conditions
1-2	N facing section of p/h [045]	N	-
3-4	S facing section of p/h [047]	S	-
5-6	S facing section of p/h [049]	S	-
7-8	NE facing section of p/h [051]	NE	-
9-10	Post-ex shot of [003]	-	-
11-12	S facing section of p/h [055]	S	-
13-14	S facing section of [053], house 3	S	-
15-16	W facing section of [053], house 3	W	-
17-18	NNE facing section of [057]	NNE	Snowy
25-26	N facing section of [053], Slot 1, north	N	Clear
27-28	W facing section of [053], Slot 1, north	N	Clear
29-30	N facing section of p/h [059]	N	Clear
31-32	N facing section of p/h [061]	N	Clear
33-34	E section of [053], Slot 2	E	Clear

Film 82

Shot	Contexts/Description	Taken from	Conditions
1	Registration shot	-	-
2-3	W facing section of [053], Slot 2	W	Clear
4-5	Post-ex shot of p/h [063]	-	Clear
6-7	E facing section of [053], Slot 3	E	Clear
8-9	N facing section of [071]	N	Drizzle
10-11	Post-ex shot of [055]	S	Drizzle
12-13	Post-ex shot of [047]	S	Drizzle
14-15	Post-ex shot of [049]	S	Drizzle

16-17	Post-ex shot of [045]	W	Drizzle
18-19	Post-ex shot of [043]	W	Drizzle
20-21	NE facing section of	NE	Dull
22-23	W facing section of p/h [069]	W	Dull
24-25	NW facing section of p/h [073]	NW	Dull
26-27	N facing section of [077]	N	Dull
28-29	Post-ex shot of [051]	N	Dull
30-31	Post-ex shot of [041]	N	Dull
32-33	E facing section of pit [079]	E	Dull
34-35	E facing section of pit [082]	E	Dull
36-37	N facing section of [084]	N	Rain
38-39	E facing section of [084] and [073]	E	Rain

Film 83 UNUSED

Film 84

Shot	Contexts/Description	Taken from	Conditions
1	Registration shot		
2-3	S facing section of [100]	S	Wet
4-5	Post-ex shot of [100]	-	Wet
6-7	Post-ex shot of pit [089], SW end	-	Dull
8-9	S facing section of p/h [102]	S	Dull
10-11	Post-ex shot of [079]	E	Dull
12-13	Post-ex shot of [082]	E	Dull
14-15	W facing section of drip gully [089]-C/D	W	Dull
16-17	W facing section of drip gully [089]-E/F	W	Dull
18-19	W facing section of [073]	W	Overcast
20-21	N facing section of [073]	N	Overcast
22-23	Post-ex shot of pit [089], NE end	S	Overcast
24-25	Post-ex shot of p/h [098]	NW	Overcast
26-27	Post-ex shot of pit [085]	S	Overcast
28-29	Post-ex shot of Slot 3 - [073]	S	Overcast
30-31	S facing section of Slot 3 - [073]	S	Overcast
32	N facing section of Slot - [073]	N	Overcast

Film 85

Shot	Contexts/Description	Taken from	Conditions
1	Registration shot	-	-
2-3	NE facing section of p/h [104]	NE	Overcast
4-5	N facing section of Slot 3 - [073]	N	Overcast
6-7	S facing section of Slot 3 - [073]	S	Overcast
8-9	Post-ex shot of Slot 3 - [073]	-	Overcast
10-11	Post-ex shot of Slot 1 - [073]	-	Overcast
12-13	Post-ex shot of [021]	NE	Overcast
14-15	Post-ex shot of [023]	NE	Overcast
16-17	Post-ex shot of [014]	NE	Overcast
18-19	Post-ex shot of [033]	E	Overcast
20-21	Post-ex shot of [037]	NE	Overcast
22-23	SE facing section of [109] and [106]	SE	Overcast
24-25	N facing section of [110] and [106]	N	Overcast
26-27	Post-ex shot of Slot 2 - [073]	E	Overcast
28-29	S facing section of [112] and [117]	S	Overcast
30-31	E facing section of [112] and [114]	E	Overcast

Film 86

Shot	Contexts/Description	Taken from	Conditions
2-3	Post-ex shot of [035]	SW	-
4-5	Post-ex shot of [039]	SW	-
6-7	Post-ex shot of [037]	SW	-
8-9	Post-ex shot of [190]	NE	-
10-11	Post-ex shot of [059]	NNW	-
12-13	NE facing section of [118] and [120]	NE	Clear
14-15	E facing section of [122] and [124]	E	Clear
16-17	W facing section of [116]	W	Clear
18-19	N facing section of [116]	N	Clear
20-21	W facing section of [126]	W	Clear
22-23	SW facing section of [128]	SW	Clear
24-25	SW facing section of [130]	SW	Clear
26-27	S section of pit [132]	S	Clear
28-29	E facing section of pit [132]	E	Clear
30-31	N facing section of pit [132]	N	Clear
32-33	W facing section of pit [132]	W	Clear
34-35	S facing section of Slot 6 – [073]	S	Clear

Film 87

Shot	Contexts/Description	Taken from	Conditions
1-2	Registration shot	-	-
3-4	E facing section of [135]	E	Bright
5-6	WNW facing section of Slot 5 – [073]	WNW	Bright
7-8	Post-ex shot of [122]	E	Bright
9-10	E facing section of [137]	E	Bright
11-12	E facing section of [139]	E	Bright
13-14	W facing section of [139]	W	Bright
15-16	S facing section of [139]	S	Bright
17-18	N facing section of [139]	N	Bright
19-20	NW facing section of [142]	NW	Bright
21	General shot of work	-	Bright
22-23	S facing section of [144], SW quadrant	S	Bright
24-25	E facing section of [144], SW quadrant	W	Bright
26-27	S facing section of [146]	S	Bright
28-29	W facing section of [137]	W	Bright
30-31	W facing section of pit [144]	W	Bright
32-33	N facing section of pit [144]	N	Bright

Film 88

Shot	Contexts/Description	Taken from	Conditions
1	Registration shot	-	-
2-3	W facing section of p/h [148]	W	Heavy rain
4-5	Shot of [152] and [153]	-	Heavy rain
6-7	W facing section of [150]	W	Heavy rain
8-9	S facing section of [158]	S	Heavy rain
10-11	S facing section of [156]	S	Heavy rain
12-13	S facing section of [154]	S	Heavy rain
14-15	S facing section of [160]	S	Heavy rain
16-17	Post-ex shot of [144]	SW	Sun
18-19	S facing section of [164]	S	Sun
20-21	S facing section of [162]	S	Sun

22-23	Post-ex shot of [084]	E	Rain
24-25	W facing section of p/h [166]	W	Snow
26-27	Post-ex of [148]	NW	Snow
28-29	W facing section of [168]	W	Snow
30-31	SW facing section of p/h [170]	SW	Snow
32-33	SW facing section of [172]	SW	Dull
34-35	NWN facing section of [174]	NWN	Rain

Film 89

Shot	Contexts/Description	Taken from	Conditions
1	Registration shot	-	-
2-3	S section of [176]	S	Overcast
4-5	S facing section of p/h [178]	S	Overcast
6-7	E facing section of [180]	E	Overcast
8-9	S facing section of p/h [182]	S	Overcast
10-11	W facing section of [184]	W	Overcast
12-13	N facing section of [186]	N	Overcast
14-15	NWN facing section of [114]	NWN	Rain
16-17	E facing section of p/h [188]	E	Rain
18-19	E facing section of [190] and [192]	E	Rain
20-21	S facing section of [194]	S	Rain
22-23	E facing section of [196] and [198]	E	Rain
24-25	S facing section of pit [202]	S	Rain
26-27	W facing section of pit [202]	W	Rain
28-29	N facing section of pit [202]	N	Rain
30-31	E facing section of pit [202]	E	Rain
32-33	N facing section of [200] and [114], Slot 1	N	Rain
34-35	W facing section of [114], Slot 1	W	Rain

Film 90

Shot	Contexts/Description	Taken from	Conditions
1-2	Post-ex shot of [194]	-	Overcast
3-4	E facing section of [204]	-	Overcast
5-6	N facing section of p/h [206]	N	Overcast
7-8	SE facing section of p/h [206]	SE	Overcast
9-10	WNW facing section of [210], SW quadrant	WNW	Overcast
11-12	SSW facing section of [210], SW quadrant	SSW	Overcast
13-14	ESE facing section of [210], NE quadrant	ESE	Overcast
15-16	NNE facing section of [210], NE quadrant	NNE	Overcast
17-18	SE facing section of p/h [212]	SE	Overcast
19-20	S facing section of pit [214], SE quadrant	S	Overcast
21-22	S facing section of p/h [216]	S	Overcast
23-24	N facing section of p/h [244]	N	Overcast
25-26	N facing section of p/h [246]	N	Overcast
27-28	N facing section of p/h [248]	N	Overcast
29-30	NE facing section of [218]	NE	Overcast/rain
31-32	N facing section of [220]	N	Overcast/rain
33-34	N facing section of [214], NW quadrant, [222]	N	Overcast/rain
35-36	W facing section of [214], NW quadrant	W	Overcast/rain

Film 91

Shot	Contexts/Description	Taken from	Conditions
1	Registration shot	-	-
2-3	NW facing section of p/h [250]	NW	Rain

4-5	ESE facing section of [224]	ESE	Rain
6-7	S facing section of [231]	S	Overcast
8-9	S facing section of [234]	S	Overcast
10-11	SW facing section of pit [226]	SW	Overcast
12-13	SE facing section of pit [228]	SE	Overcast
14-15	NE facing section of pit [228]	NE	Overcast
16-17	NW facing section of pit [228]	NW	Overcast
18-19	Post-ex shot of [236]	N	Overcast
20-21	SE facing section of [238] and [240]	SE	Overcast
22-23	S facing section of p/h [242]	S	Overcast
24-25	Post-ex shot of [214]	E	Overcast
26-27	E facing section of p/h [252]	E	Overcast
28-29	N facing section of p/h [254]	N	Overcast
30-31	Post-ex shot of pit [226]	S	Overcast
32-33	NW facing section of [256]	NW	O/c and frozen
34-35	Post-ex shot of [256]	NW	O/c and frozen

Film 92

Shot	Contexts/Description	Taken from	Conditions
1	Registration shot	-	-
2-3	S facing section of pit [258]	S	O/c and frozen
4-5	W facing section of [260]	W	O/c and frozen
6-7	S facing section of [262]	S	O/c and frozen
8-9	E facing section of [266]	E	O/c and frozen
10-11	Post-ex shot of pit [228]	S	O/c and frozen
12-13	S facing section of [264]	S	O/c and frozen
14-15	NNE facing section of [268]	NNE	O/c and frozen
16-17	NNE facing section of [268]	NNE	O/c and frozen
18-19	SE facing section of [272]	SE	O/c and frozen
20-21	NW facing section of [274]	NW	O/c and frozen
22-23	SE facing section of [276]	SE	O/c and frozen

APPENDIX 5: Field Drawing Register Houses 2, 4, 5 and 6

Drawing No.	Scale	Section/Plan	Contexts/Description
1	1:10	S	NW facing section [017]
2	1:10	S	SE facing section [023]
3	1:10	S	N facing section [026]
4	1:10	S	N facing section [028]
5	1:10	S	NE facing section [030]
6	1:10	S	E facing section of SE Quad [046]
7	1:10	S	S facing section of SE Quad [046]
8	1:10	S	N facing section [019]
9	1:10	S	W facing section of NW Quad [046]
10	1:10	S	N facing section of NW Quad [046]
11	1:10	S	E facing section [021]
12	1:10	S	SE facing section [034]
13	1:10	S	SE facing section [032]
14	1:10	S	E facing section [038]
15	1:10	S	N facing section [036]
16	1:10	S	SE facing section [034]
17	1:10	S	SE facing section [042]
18	1:10	S	S facing section [050]
19	1:10	S	SW facing section Slot 4 House 4
20	1:10	S	NE facing section of pit [056]

Drawing No.	Scale	Section/Plan	Contexts/Description
21	1:20	P	Post-ex plan of pit [056]
22	1:10	S	S facing section [062]
23	1:20	P	Post-ex plan [062]
24	1:10	S	SE facing section [060]
25	1:20	P	Post-ex plan [060]
26	1:10	S	SE facing section [058]
27	1:20	P	Post-ex plan [058]
28	1:10	S	SE facing section of gully/ditch outside House 4
29	1:10	S	NW facing section of post holes [013], [066] and Slot 1 of ditch [008]
30	1:10	S	NE facing section of Slot 4 House 4
31	1:10	S	S facing section Slot 4 House 4
32	1:50	P	Plan of stones (052) in ditch [008]
33	1:10	S	E facing section [088]
34	1:10	S	N facing section of post hole [090] and gully [015]
35	1:10	S	NW facing section of gully [015]
36	1:10	S	SE facing section of gully [015]
37	1:10	S	S facing section of [092]
38	1:10	S	N facing section of gully
39	1:10	S	S facing section of gully
40	1:10	S	NE facing section of gully
41	1:10	S	N facing section of gully
42	1:10	S	N facing section [119]
43	1:10	S	NE facing section [015], NW part of House 4
44	1:10	S	SW Facing [015], NW part of House 4
45	1:10	S	SSE facing section [098]
46	1:10	S	S facing section [096]
47	1:10	S	SSE facing section [003]
48	1:10	S	S facing section [100]
49	1:10	S	SE facing section [044]
50	1:10	S	WSW facing section [102]
51	1:10	S	SW facing section [106]
52	1:10	S	SW facing section [111] and [109]
53	1:10	S	NW facing section [117]
54	1:10	S	WNW facing section [113]
55	1:10	S	W facing section [115]
56	1:10	S	SE facing section [094]
57	1:10	S	SE facing section Slot 3 House 4
58	1:10	S	W facing section Slot 3 House 4
59	1:10	S	SW facing section [136]
60	1:10	S	SW facing section [124]
61	1:10	S	NE facing section [130]
62	1:10	S	SE facing section [132]
63	1:10	S	N facing section [144]
64	1:10	S	N facing section of NE Quad [134]
65	1:10	S	E facing section of NE Quad [134]
66	1:10	S	S facing section of SW Quad [134]
67	1:10	S	W facing section of SW Quad [134]
68	1:10	Pr	NNE-SSW profile of Slot 3 House 4 showing post holes [121] and [104]
69	1:10	S	NW facing section of pit [005] NE Quad
70	1:10	S	NE facing section [005] NE Quad
71	1:10	S	SW facing section [005] SW Quad
72	1:10	S	SE facing section [005] SW Quad
73	1:10	S	E Facing section [128] and [126]
74	1:10	S	S facing section [128]
75	1:10	S	SW facing section [128]

Drawing No.	Scale	Section/Plan	Contexts/Description
76	1:10	S	NE facing section [128]
77	1:10	S	W facing section [128]
78	1:10	S	S facing section [138]
79	1:20	P	Post-ex plan [138]
80	1:10	S	N facing section [068]
81	1:10	S	NE facing section [076]
82	1:10	S	N facing section [070]
83	1:10	S	S facing section [072]
84	1:10	S	S facing section [080]
85	1:10	S	SW facing section [048]
86	1:10	S	S facing section [078]
87	1:10	S	S facing section [074]
88	1:10	S	S facing section [082]
89	1:10	S	S facing section [086]
90	1:10	S	N facing section [146]
91	1:10	S	N facing section [148]
92	1:10	S	N facing section [153]
93	1:10	S	E facing section [155]
94	1:10	S	E facing section [157]
95	1:10	S	S facing section [159]
96	1:10	S	E facing section [161]
97	1:10	S	SE facing section [165] Slot 1, House 5
98	1:10	S	NE facing section [165] and [167] Slot 1 House 5
99	1:10	S	S facing section [171]
100	1:10	S	S facing section [173]
101	1:10	S	S facing section [175]
102	1:10	S	S facing section [177]
103	1:10	S	E facing section [179]
104	1:10	S	SW facing section [181]
105	1:10	S	SE facing section [150] Slot 2 House 5
106	1:10	S	W facing section of [150] Slot 2 House 5
107	1:10	S	WSW facing section [190]
108	1:20	P	Working plan of pit [164], NW Quad showing fills (163), (199) and (183)
109	1:10	S	NE and SW facing sections [164]
110	1:10	S	NE and SW facing section of [164]
111	1:10	S	N facing section post hole [193] and gully [197]
112	1:10	S	E facing section [195]
113	1:10	S	E facing section of ditch Slot 3 House 5
114	1:10	S	NE facing section of ditch Slot 3 House 5
115	1:10	P	Working plan of post hole [201] showing packing stones (203)
116	1:10	S	SW facing section [201]
117	1:10	S	E facing section [204]
118	1:10	S	E facing section [204]
119	1:10	S	Palisade [192], Slot 1 section
120	1:10	S	NE facing section Slot 3 House 5
121			NUMBER NOT USED
122			NUMBER NOT USED
123			NUMBER NOT USED
124			NUMBER NOT USED
125			NUMBER NOT USED
126			NUMBER NOT USED
127			NUMBER NOT USED
128			NUMBER NOT USED
129	1:20	P	Post-ex plan of post hole Slot 3 House 5
130	1:10	S	W facing section [212]
131	1:10	S.	E facing section [212]

Drawing No.	Scale	Section/Plan	Contexts/Description
132	1:10	S	Profile of stake hole [220]
133	1:10	S	E facing section [222]
134	1:10	S	Post-ex plan [222]
135	1:10	S	S facing section [224]
136	1:20	P	Post-ex plan [224]
137	1:10	S	SE facing section [214]
138	1:10	S.	W facing section [216]
139	1:10	S	NW facing section [185] Slot 3 House 5
140	1:10	S	SE facing section [185] Slot 3 House 5
141	1:10	S.	E facing section [226]
142	1:10	S	N facing section [228]
143	1:10	S	NE facing section [230]
144	1:10	P	Post-ex plan [230]
145	1:10	S	Palisade [192], Slot 1: mid-Slot section
146	1:10	S	Palisade [192], Slot 1 ESE facing section
147	1:20	P	Palisade [192], 'v' Slot in base of cut
148	1:10	S	Palisade [192], Slot 1 WNW facing section
149	1:10	S.	N facing section of post holes [232] and [240]
150	1:20	P	Post-ex plan [232] and [240]
151	1:10	Pr	N-S profile of stake hole [236]
152	1:10	Pr	NE-SW profile of stake hole [234]
153	1:10	P	Working plan of [242] and [244] showing packing stones (246)
154	1:10	S	E facing section [242] and [244]
155	1:10	S	NE facing section [238]
156	1:10	S	NW facing section of palisade [192] Slot 2
157	1:10	S	SE facing section of palisade [192] Slot 2
158	1:10	S	NW facing section of palisade [192] Slot 3
159	1:10	S	NW facing section of palisade [192] Slot 3, extension
160	1:10	S	E facing section palisade [192] Slot 4
161	1:10	S	W facing section palisade [192] Slot 4
162	1:10	S	E facing section palisade [192] (209-211) (250-1)
163	1:10	S	W facing section palisade [192] (210-11)
164	1:10	S	NE facing section palisade [192], Slot 3
165	1:10	S	SW facing section [248]
166	1:20	P	Post-ex plan [248]
167	1:10	S	N facing section [151] and [252]
168	1:10	S	SW facing section [265]
169	1:10	P	Plan of part-excavated feature [258]
170	1:10	Pr	WSW-ENE profile of stake hole [254]
171	1:10	Pr	WSW-ENE profile of stake hole [256]
172	1:10	S	NE facing section [267]
173	1:10	S	NW facing section [258]
174	1:50	P	House 4 post-ex plan pit
175	1:50	P	House 4 pre-ex plan
176	1:50	P	House 5 pre-ex plan
177	1:50	P	Area B pre-ex plan, area between House 4 and House 5
178	1:50	P	Area B post-ex plan, area between House 4 and House 5
179	1:10	S	W facing section of post hole House 2
180	1:10	S	W facing section of pit House 2
181	1:10	S	S facing section [273]
182	1:10	S	S facing section [275]
183	1:10	S	S facing section [277]
184	1:10	S	SE facing section [279]
185	1:10	S	NE facing section [281]
186	1:10	S	W facing section [283]
187	1:10	S	ESE facing section [285]

Drawing No.	Scale	Section/Plan	Contexts/Description
188	1:10	S	NE facing section [287]
189	1:10	S	SE facing section [289]
190	1:10	S	S facing section [293]
191	1:10	S	SE facing section [297]
192	1:10	S	S facing section [291]
193	1:10	S	S facing section [295]
194	1:10	S	SW facing section [299]
195	1:10	S	NW facing section [301]
196	1:10	S	S facing section [305]
197	1:10	S	NE facing section [307]
198	1:10	S	NE facing section [211] and [213]
199	1:10	S	W facing section [215]
200	1:10	S	NW facing section [303]
201	1:10	S	SE facing section [303]
202	1:10	S	NE facing section [303]
203	1:10	S	SW facing section [303]
204	1:10	S	W facing section [333]
205	1:10	S	S facing section [351]
206	1:10	S	NW facing section [345]
207	1:10	S	N facing section [347]
208	1:10	S	NNE facing section [351]
209	1:10	S	NNE facing section [349]
210	1:10	S	E facing section [327]
211	1:10	S	NE facing section [329]
212	1:10	S	E facing section [331]
213	1:10	S	N facing section [337]
214	1:10	S	E facing section [339]
215	1:10	S	E facing section [323]
216	1:10	S	N facing section [341]
217	1:10	S	NE facing section [325]
218	1:10	S	E facing section [343]
219	1:10	S	S facing section [353]
220	1:10	S	SE facing section [355]
221	1:10	S	N facing section [357]
222	1:10	S	NE facing section [359] and [384]
223	1:10	S	W facing section [357]
224	1:10	S	N facing section [363]
225	1:10	S	NE facing section [365]
226	1:10	S	E facing section [386]
227	1:10	S	SE facing section [388]
228	1:10	S	E facing section [390]
229	1:10	S	S facing section [392]
230	1:10	S	S facing section Slot 2 House 4
231	1:10	S	NE facing section Slot 2 House 4
232	1:10	S	E facing section of beam Slot [394]
233	1:10	S	SE facing section [397]
234	1:10	S	W facing section [401]
235	1:10	S	N facing section [403]
236	1:50	P	Post-ex plan Area B House 5
237	1:10	S	SSW facing section [411]
238	1:10	S	SE facing section [409]
239	1:10	S	SE facing section [413]
240	1:10	S	SE facing section [381]
241	1:50	P	Plan of part- excavated Slot 4 House 2
242	1:20	P	Pre-ex plan of post hole [418], Slot 6 House 2
243	1:10	S	S facing section [421]
244	1:10	S	SE facing section [406] Slot 3

Drawing No.	Scale	Section/Plan	Contexts/Description
245	1:10	S	W facing section [418]
246	1:10	P	Plan of part-excavated post hole [423]
247	1:10	S	NE facing section Slot 5 House 2
248	1:10	S	S facing section Slot 5 House 2
249	1:10	S	SE facing section Slot 6 House 2
250	1:10	S	N facing section Slot 6 House 2
251	1:10	S	N facing section of post hole [430] Slot 6 House 2
252	1:10	S	S facing section of pit [442] next to Slot 5 House 2
253	1:10	S	SW facing section Slot 3 House 2
254	1:10	S	NE facing section [436] and [438]
256	1:10	S	SW facing section [434]
257	1:10	S	N facing section [442]
258	1:10	S	N facing section [444]
259	1:10	S	E facing section [446]
260	1:10	S	E facing section [450]
261	1:10	S	S facing section [454]
262	1:10	S	W facing section [456]
263	1:10	S	W facing section [458]
264	1:10	S	N facing section [423] and [426]
265	1:10	S	NNW facing section of post hole [452] Slot 1A House 2
266	1:10	S	NW facing section [426] and SW facing section [377] Slot 1 House 2
267	1:10	S	N facing section [448]
268	1:10	S	SW facing section Slot 7 and pits [460] and [463]
269	1:10	S	S facing section [465]
270	1:10	S	S facing section of beam Slot [304] Slot 3
271	1:10	S	S facing section of post hole [399] in Slot 4 House 2
272	1:10	S	NE facing section [477]
273	1:10	S	NE facing section [377] Slot 1
274	1:10	S	Part of NNW facing section [377] Slot 1
275	1:10	Pr	N-S profile of stake hole [473]
276	1:10	S	NE facing section [479]
277	1:10	S	S facing section [481]
278	1:10	S	Plan of post hole [452] and packing stones (483)
279	1:10	S	SW facing section [484]
280	1:10	S	S facing section [486]
281	1:10	S	W facing section [486]
282	1:10	S	W facing section [495]
283	1:10	S	W facing section [497]
284	1:10	S	S facing section [511]
285	1:10	S	SE facing section [513]
286	1:10	S	NW facing section [519]
287	1:10	S	W and WNW facing sections of post hole and pit [502] and [488]
288	1:10	P	Pre-ex plan of posthole [504]
289	1:10	S	W facing section [504]
290	1:10	S	N facing section [517]
291	1:10	S	W facing section [527]
292	1:10	S	E facing section [507], SW Quad, House 6
293	1:10	S	S facing section [507], SW Quad House 6
294	1:10	S	SE facing section [490]
295	1:10	S	S facing section [492]
296	1:10	S	SW facing section [509]
297	1:10	S	SE facing section [515]
298	1:10	S	N facing section [525]
299	1:10	S	SE facing section [521] and [523]
300	1:10	S	E facing section [530]

Drawing No.	Scale	Section/Plan	Contexts/Description
301	1:10	S	N facing section [508] SW Quad
302	1:10	S	W facing section [532]
303	1:10	S	SW facing section [540]
304	1:10	S	N facing section [545]
305	1:10	S	E facing section [547]
306	1:10	S	SW facing section of pits [540] and [549]
307	1:10	S	SW facing section [555]
308	1:10	S	SW facing section [557]
309	1:10	S	W facing section [551]
310	1:10	S	E facing section [553]
311	1:10	S	NE facing section [559]
312	1:10	S	NNE facing section [561]
313	1:10	S	SE facing section [569]
314	1:10	S	SE facing section [571]
315	1:10	S	S facing section [565]
316	1:10	S	S facing section [567]
317	1:10	S	N facing section [577]
318	1:10	S	ESE facing section [573]
319	1:10	S	S facing section [575] Slot 1 House 6
320	1:10	S	W facing section [575] Slot 1 House 6 (points B-C)
321	1:10	S	E facing section [575] Slot 2 House 6 (points A-B)
322	1:10	S	SW facing section [589] and [585]
323	1:10	S	SW facing section [587]
324	1:10	Pr	Profile of post hole [589]
325	1:10	S	E facing section [579]
326	1:10	S	SW facing section [581]
327	1:50	P	Post-ex plan House 2
328	1:50	P	Post-ex plan House 2
329	1:50	P	Post- ex plan House 2
330	1:50	P	Post-ex plan House 2 and 6
331	1:50	P	Post-ex plan House 6
332	1:10	S	NE facing section [543]
333	1:10	S	S facing section [563]

APPENDIX 6: Field Drawing Register House 3

Drawing No.	Scale	Section/Plan	Description/Contexts
1	1:10	S	W section of post hole [005]
2	1:10	S	WSW section of post hole [007]
3	1:10	S	E section of [011]
4	1:10	S	NE section of [013]
5	1:10	S	W section of post hole [017]
6	1:10	S	E section of [021]
7	1:10	S	S section of [023]
8	1:10	S	NW section of [019]
9	1:10	S	S section of [025]
10	1:10	S	SW section of [027]
11	1:10	S	E section of [033]
12	1:10	S	W section of post hole [035] [037] [039]
13	1:10	S	N section of post hole [029]
14	1:10	S	SW section of post hole [031]
15	1:10	S	S section of post holes [047] [049]
16	1:10	S	N section of [041]
17	1:10	S	S section of [055]
18	1:10	S	S section of [053] w Slot

Drawing No.	Scale	Section/Plan	Description/Contexts
19	1:10	S	W section of [053] w Slot
20	1:10	S	N section of post hole [045]
21	1:10	S	N section of post hole [043]
22	1:10	S	NE section of post hole [051]
23	1:10	S	N section of post hole/pit [071]
24	1:10	S	N section of [053] [065]
25	1:10	S	N section of [061]
26	1:10	S	N section of [059]
27	1:10	S	E section of pit [079]
28	1:10	S	NE section of [067]
29	1:10	S	E section of Slot 2 house 3
30	1:10	S	E section of pit [082]
31	1:10	S	N section of [084]
32	1:10	S	E section of [084] [073]
33	1:10	S	NW section of post hole [091]
34	1:10	S	SW section of post hole [093]
35	1:10	S	E section of [085]
36	1:10	S	SW section of [089] a/b
37	1:10	S	E section of [074]
38	1:10	S	N section NW quadrant
39	1:10	S	N section of post hole [098]
40	1:10	S	S section of post hole [102]
41	1:10	S	W section of [087] drip gully
42	1:10	S	W section of [073] palisaded enclosure
43	1:10	S	N section of [073]
44	1:10	S	SW section of [089] e/f
45	1:10	S	NE section of post hole [104]
46	1:10	S	S section of [073] Slot 3
47	1:10	S	N section of [073] Slot 3
48	1:10	S	Se section of [106] [108]
49	1:10	S	N section of [106] [110]
50	1:10	S	NE section of [118] [120]
51	1:10	S	E section of [122] [124]
52	1:10	S	W section of [126]
53	1:10	S	SW section of [128]
54	1:10	S	SW section of [130]
55	1:10	S	S section of [073] Slot 6
56	1:10	S	E section of [135]
57	1:10	S	WNW section of [073] Slot 4
58	1:10	S	S section of pit [132]
59	1:10	S	E section of pit [132]
60	1:10	S	N section of pit [132]
61	1:10	S	W section of pit [132]
62	1:10	S	S section of [144] SW quadrant
63	1:10	S	W section of [144] SW quadrant
64	1:10	S	NW section of [148]
65	1:10	S	E section of [137]
66	1:10	S	W section of [137]
67	1:10	S	N section of pit [144]
68	1:10	S	W section of pit [144]
69	1:10	S	W section of post hole [148]
70	1:10	S	S section of post hole [154]
71	1:10	S	S section of post hole [160]
72	1:10	S	W section of pit [150]
73	1:10	S	W section of [168]
74	1:10	S	SW section of [166]
75	1:10	S	SW section of post hole [170]

Drawing No.	Scale	Section/Plan	Description/Contexts
76	1:10	S	SW section of [172]
77	1:10	S	S section of [152]
78	1:10	S	S section of [146]
79	1:10	S	NWW section [174]
80	1:10	S	W section of [112]
81	1:10	S	N section of [112]
82	1:10	S	S section of [182]
83	1:10	S	E section of [112] and [116]
84	1:10	S	S section of [112] and [114]
85	1:10	S	S section of [156]
86	1:10	S	S section of [158]
87	1:10	S	E section of [139]
88	1:10	S	W section of [139]
89	1:10	S	S section of [139]
90	1:10	S	S section of [176]
91	1:10	S	W section of [139]
92	1:10	S	NW section of [142]
93	1:10	S	S section of [164]
94	1:10	S	S section of [063]
95	1:10	S	W section of [083]
96	1:10	S	W section of [069]
97	1:10	S	S section of post hole [178]
98	1:10	S	NW section of [075]
99	1:10	S	N section of [077]
100	1:10	S	N section of [087]
101	1:10	S	SW section of [095]
102			NOT USED
103	1:10	S	W section of [182]
104	1:10	S	S section of post hole [182]
105	1:10	S	E section of [180]
106	1:10	S	N section of [186]
107	1:10	S	NWN section of [144]
108	1:10	S	E section of [188]
109	1:10	S	E section of [190]
110	1:10	S	E section of [192]
111	1:10	S	S section of [194]
112	1:10	S	NE section of [196] and [198]
113	1:10	S	S section of pit [202]
114	1:10	S	W section of pit [202]
115	1:10	S	N section of pit [202]
116	1:10	S	E section of pit [202]
117	1:10	S	E section of [204]
118	1:10	S	N section of [200] and [114]
119	1:10	S	W section of [114]
120	1:10	S	W section of post hole [206]
121	1:10	S	Se section of post hole [208]
122	1:10	S	Se section of post hole [212]
123	1:10	S	S section of post hole [216]
124	1:10	S	N section of [220]
125	1:10	S	E section of [214] se quadrant
126	1:10	S	S section [214] se quadrant
127	1:10	S	W section [214] NW quadrant
128	1:10	S	N section of [214] and [222]
129	1:10	S	S section of [234]
130	1:10	S	WNW and ESE section of pit [210]
131	1:10	S	SSW and NNE section of pit [210]
132	1:10	S	NE section of post hole [231]

Drawing No.	Scale	Section/Plan	Description/Contexts
133	1:10	S	ESE section of post hole [224]
134	1:10	S	Se section of post hole [231]
135	1:10	S	Se section of post holes [238] [240]
136	1:10	S	S section of post hole [242]
137	1:10	S	N section of post holes [244] and [246]
138	1:10	S	N section of post hole [248]
139	1:10	S	NE section of post hole [250]
140	1:10	S	E section of post hole [252]
141	1:10	S	Section of stake hole [236]
142	1:10	S	NW section of [254]
143	1:10	S	NW section of pit [256]
144	1:10	S	W section of post hole [260]
145	1:10	S	S section of pit [258]
146	1:10	S	S section of post hole [262]
147	1:10	S	E section of pit [264]
148	1:10	S	S section of [264]
149	1:10	S	NNE section of [268]
150	1:10	S	NNE section of [270]
151	1:10	S	Se section of [272]
152	1:10	S	NW section of [274]
153	1:10	S	Se section of [276]
154	1:50	P	General plan of area c
155	1:10	S	SW section of pit [226]
156	1:10	S	NE section of pit [228]
157	1:10	S	SW section of pit [228]
158	1:10	S	Se section of pit [228]
159	1:10	S	NW section of pit [228]
160	1:10	S	E section of Slot 3; house 3
161	1:10	S	N section of [015]; NE quadrant; house 3
162	1:10	S	NE section of [015]; NE quadrant; house 3
163	1:10	S	W section of [015]; SW quadrant; house 3
164	1:10	S	S section of [015]; SW quadrant; house 3

APPENDIX 7: Samples Register Houses 2, 4, 5 and 6

Sample no.	Context and description
290	(006), main fill of pit [005] SW quadrant
291	(006), main fill of pit [005] NE quadrant
292	(047), fill of linear feature [046] NW quadrant
293	(047), fill of linear feature [046] SE quadrant
294	(033), fill of posthole [032]
295	(048), charcoal sample from upper fill of ditch, House 4 Slot 4
296	(018), fill of post hole [017]
297	(016), fill of a gully [015],
298	(024), fill of post hole [023]
299	(027), fill of post hole [026]
300	(029), fill of post hole [028]
301	(037), fill of pit [036]
302	(041), fill of posthole [040]
303	(043), fill of post hole [042]
304	(049), fill of pit [055] in House 4, Slot 2
305	(048), upper fill of ditch, House 4 Slot 2
306	(051), fill of posthole [050], House 4 Slot 2
307	(054), secondary fill of ditch, House 4 Slot 2
308	(057), fill of pit [056], House 4

Sample no.	Context and description
309	(059), fill of pit [058], House 4
310	(061), fill of pit [060], House 4
311	(063), fill of pit [062], House 4
312	(067), fill of posthole [066]
313	(095), fill of posthole [094]
314	(045), fill of posthole [044]
315	(097), fill of posthole [096]
316	(093), fill of posthole [092]
317	(091), fill of posthole [090]
318	(089), fill of posthole [088]
319	(099), fill of possible base of post hole [098]
320	(101), fill of posthole [100]
321	(004), fill of posthole [003]
322	(103), fill of posthole [102]
323	(105), fill of posthole [104]
324	(107), fill of posthole [106]
325	(110), fill of posthole [109]
326	(110) burnt bone in the fill
327	(114), fill of posthole [113]
328	(116), fill of posthole [115]
329	(075), fill of posthole [074]
330	(077), fill of posthole [076]
331	(087), fill of truncated ring-ditch
332	(131), fill of posthole [130]
333	(139), fill of posthole [138]
334	(133), fill of posthole [132]
335	(135), NE quadrant of pit [134]
336	(135), SW quadrant of pit [134]
337	(129), burnt bone
338	(064), upper fill [008], House 4 Slot 4
339	(065), lower fill of [008], House 4 Slot 4
340	(147), fill of posthole [146]
341	(058/059) Palisade OSL, 1 tin
342	(158), fill of posthole [157]
343	(160), fill of posthole [159]
344	(154), fill of posthole [153]
345	(127), fill of posthole [126]
346	(129), fill of pit [128]
347	(169), lower fill of pit 164 (cut by a burrow)
348	(174), fill of posthole [173], house 5
349	(177), fill of posthole [176], house 5
350	(169), fill of [164], charcoal and burnt bone
351	(169), burnt bone pieces
352	(183), charcoal sample from NW quadrant of [164]
353	(185), fill of [150], House 5
354	(186) block fill in (185), house 5
355	Bone of (166), House 5 Slot 5
356	Bone of (185) House 5 Slot 1
357	Charcoal of (186), House 5 Slot 1
358	(166, 169), fill of ditch Slot 1
359	(191), lower fill of pit [190]
360	(163), upper fill of pit [164]
361	(183), secondary fill of pit [164]
362	(166), fill of ditch House 5 Slot 3
363	(185), fill of ditch House 5 Slot 3
364	(200), fill of post hole House 5 Slot 3
365	(205), fill of post hole [204]

Sample no.	Context and description
366	(207), fill of post hole [206]
367	(185) charcoal sample
368	(170) charcoal sample
369	(217), fill of post hole [216]
370	(221), fill of stake hole [220]
371	(227), fill of pit [226]
372	(229), fill of post hole [228]
373	(231), fill of post hole [230]
374	(233), fill of post hole [232]
375	(235), fill of stake hole [234]
376	(243), fill of post hole/pit
377	(245), fill of post hole/pit
378	(247), packing fill of post hole
379	(249), fill of post hole [248]
380	(192), fill of palisade Slot
381	(152), fill of post hole [151]
382	(266), fill of post hole
383	(268), fill of post hole
384	(264), fill of pit [263]
385	(272), fill of pit [271]
386	(272), fill of pit [277]
387	(304), fill of pit [303] SW Quad
388	(304), 3 bags of pottery from of pit [303] SW Quad
389	(304), fill of pit [303] SW Quad
390	(304), fill of pit [303] NE Quad
391	(304), pottery in NE Quad
392	(304), fill of pit [303] NW Quad
393	(304), pottery in NW quad
394	(292), fill of post hole [291]
395	(312), fill of post hole [311]
396	(314), fill of post hole [313]
397	(009/010), fill of ring-ditch House 4: 3x Kubiena tins for thin section
398	(354), fill of pit [353]
399	(354), pottery from pit [353]
400	(362), fill of [361]
401	(364), fill of [363]
402	(366), fill of [365]
403	(378), fill of ring-ditch House 2
404	(304), pottery from baulk
405	(386), modern pot in post hole
406	(378) pottery
407	(378) burnt bone
408	(395), fill of beam Slot [394] House 2 Slot 4
409	(378), fill of ring-ditch House 2 Slot 3
410	(398), fill of post hole House 2 Slot 4
411	(400), fill of post hole House 2 Slot 4
412	(402), fill of post hole House 2 Slot 4
413	(404), fill of post hole House 2 Slot 4
414	(416), pottery in Slot 5 House 2
415	(416), burnt bone
416	(416), charcoal
417	(416), unknown material
418	(416), fill in Slot 5 House 2
419	(005), cut of pit: OSL dates
420	(382), fill of post hole [381]
421	(419), fill of post hole [418]
422	(422), fill of pit [421]

Sample no.	Context and description
423	(009/010), fill of Slot 1 House 4: phosphate analysis
424	(406), fill of pit Slot 3
425	(427), fill of possible pit SW terminal end
426	(435), fill of linear feature
427	(437), fill of pit [436]
428	(439), fill of post hole [438]
429	(441), fill of post hole [440]
430	(416), House 2, Slot 6
431	[417], pottery House 2 Slot 6
432	[417], burnt bone House 2 Slot 6
433	(416), fill of Slot 6, House 2
434	(431), fill of post hole [430], House 2 Slot 6
435	(429), fill of pit [428] House 2
436	(433), fill of pit [432]
437	(445), fill of pit [444] House 2 inner post hole
438	(449), fill of post hole [448] House 2 Slot 6
439	(418), charcoal sample dry sieve only
440	(453), fill of post hole
441	(461), fill of post hole [460] House 2 Slot 7
442	(463), fill of post hole [462] House 2 Slot 7
443	(416), fill of [417] House 2 Slot 7
444	(416), charcoal, House 2 Slot 7
445	(378), 2x Kubierna Tins from NW facing section House 2 Slot 2
446	(378/464), 3x Kubierna Tins from NW facing section House 2 Slot 1
447	(378), upper fill of House 2 Slot 1
448	(466), fill of post hole [465] House 2 Slot 7
449	(378), charcoal-rich sample from baulk of feature [377]
450	(416), charcoal
451	(464), lower fill of [377] House 2 Slot 1
452	(424), fill of post hole [423]
453	(472), fill of post hole [471]
454	(470), fill of post hole [469]
455	(468), fill of post hole [467]
456	(480), fill of post hole [479]
457	(478), fill of post hole [477]
458	(482), fill of post hole [481] House 2
459	(485), fill of post hole [484] House 2
460	(487), fill of small pit House 2
461	(489), fill of post hole [488] House 6
462	(491), fill of post hole House 6
463	(495), fill of post hole [494] House 6
464	(497), fill of post hole [496] House 6
465	(499), fill of post hole [498] House 6
466	(501), fill of post hole [500] House 6
467	(503), fill of post hole [502] House 6
468	(505), fill of post hole [504] House 6
469	(508), fill of large pit [507] House 6
470	(510), fill of post hole [509] House 6
471	(514), fill of post hole [513] House 6
472	(512), fill of post hole [511] House 6
473	(516), fill of post hole [515] House 6
474	(518), fill of post hole [517] House 6
475	(505), charcoal sample
476	(520), fill of pit [519]
477	(528), fill of post hole [527]
478	(522), fill of posthole 521, baulk
479	(524), fill of posthole [523]

Sample no.	Context and description
480	(526), fill of posthole, baulk
481	(531), fill of posthole [530]
482	(533), fill of pit [532]
483	(508), NW quad of (505)
484	(541), fill of pit [540]
485	(544), fill of pit [543], baulk
486	(546), fill of posthole[545]
487	(548), Fill of posthole [547]
488	(550), fill of pit [549]
489	(554), fill of posthole [553]
490	(556), fill of posthole [555]
491	(558), fill of posthole [557]
492	(560), fill of posthole [559]
493	(566), fill of posthole [565]
494	(568), fill of posthole [567]
495	(572), fill of posthole [571]
496	(539), fill of posthole [538], baulk
497	(547), fill of posthole [573], charcoal flecks, baulk
498	(576), fill of pit [575], Slot 1, SW quad
499	(576), fill of pit [575], Slot 2 NE quad
500	(580), fill of posthole [581]
501	(582), fill of posthole [581]
502	(588), fill of pit [587], east of house 6
503	(584), fill of posthole [582], east of house 6
504	(590), fill of posthole [589], east of house 6

APPENDIX 8: Sample Register House 3

Sample no.	Context	Description
505	008	Fill of post hole [007], charcoal flecks
506	006	Fill of post hole [005]
507	018	Fill of post hole [017]
508	013	Fill of post hole [011]
509	014	Fill of post hole [012]
510	016	Fill of [015]
511	042	Fill of [041]
512	048	Fill of [047]
513	050	Fill of [049]
514	004	Fill of post hole [003]
515	052	Fill of post hole [051]
516	056	Fill of [055]
517	046	Fill of post hole [045]
518	044	Fill of post hole [043]
519	054	Fill of post hole(?), house 3, Slot 3
520	060	Fill of post hole [053], Slot 1
521	054	Fill of [053] house 3, Slot 1
522	076	Fill of post hole
523	070	Fill of post hole
524	015	Fill of pit
525		NOT USED
526	072	Fill a possible post hole
527	080	Fill of pit [079]
528	083	Fill of pit
530	086	Fill of pit [085]
531	092	Fill of [091]
532	074	Fill of [073], palisaded enclosure

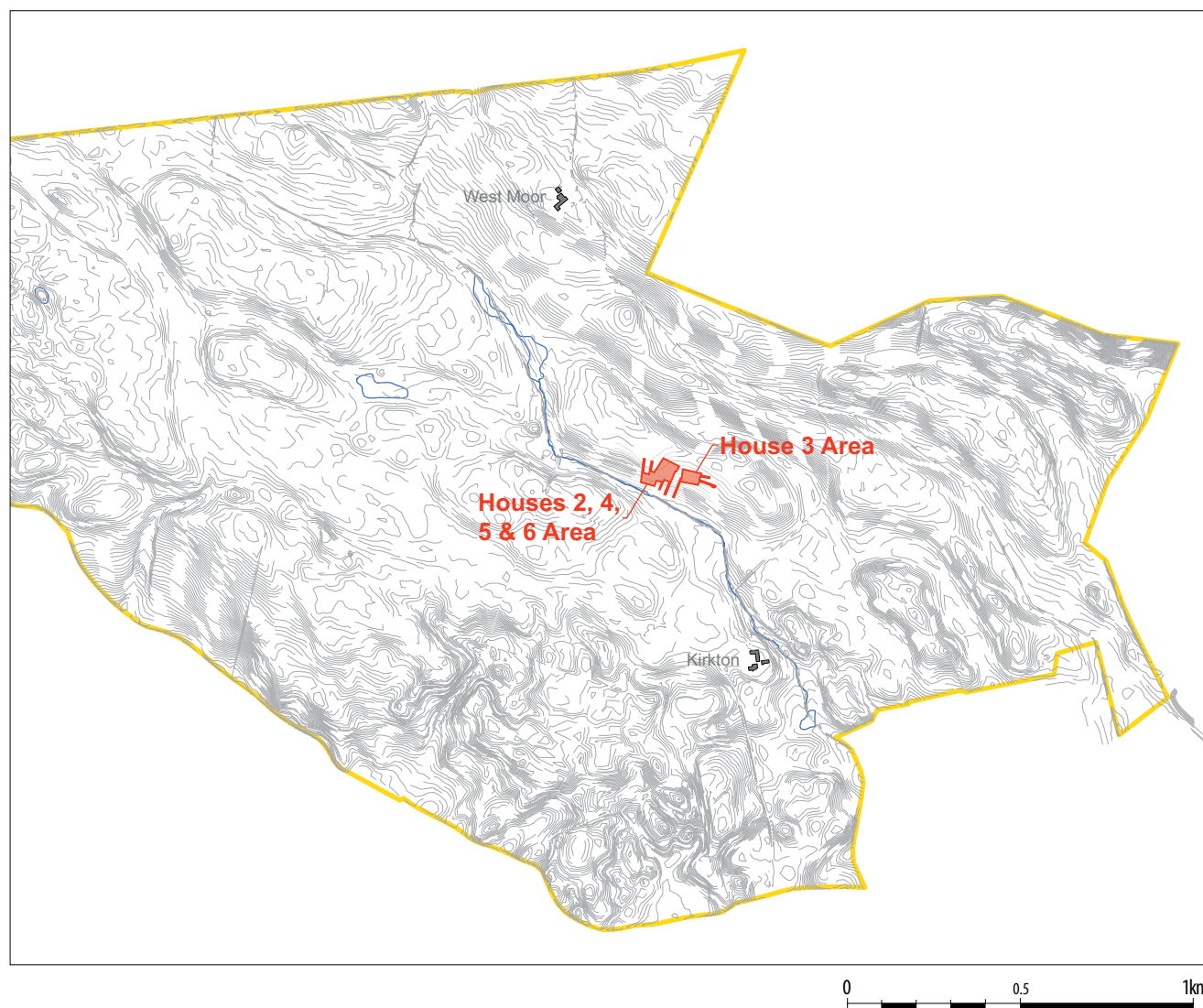
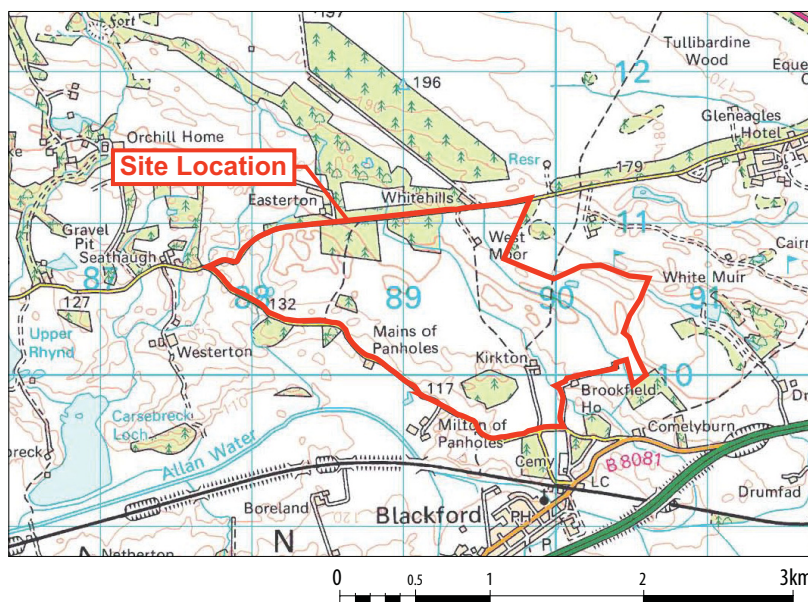
Sample no.	Context	Description
533	097	Fill of [084], pit
534	123	Fill of [122], charcoal, pot
535	133	Fill of pit [132]
536	145	Fill of pit
537	140	Fill of [139]
538	141	Lower fill of [139], charcoal-rich
539	113	Fill of [112], charcoal-rich
540	151	Fill of [150]
541	167	Fill of [166]
542	177	Fill of pit
543	159	Fill of pit
544	163	Fill of pit
545		NOT USED
546	187	Fill of pit
547	197	Fill of pit, baulk
548	201	Fill of posthole/pit [200]
549	203	Fill of pit [202]
550	209	Fill of posthole [208]
551	215	Fill of [214], baulk
552	232	Fill of posthole [231], baulk, charcoal
553	245	Fill of posthole [244]
554	247	Fill of posthole [246]
555	249	Fill of posthole [248]
556	251	Fill of posthole [250]
557	255	Fill of posthole
558	227	Fill of pit [226]
559	229	Fill of pit [228]
560	230	Primary fill of pit [228]
561	257	Fill of posthole/pit, baulk, charcoal

APPENDIX 9: Finds Catalogue

House	Context	Wt (g)	Material	Description
	109	6	Other	Burnt clay/daub?
	541	0.3	Burnt bone	
	Cleaning	47	Pot	Includes rim sherds
	Cleaning	16	Stone	Chert
2	304	934	Pot	Includes rim sherds
2	354	12	Pot	Plain body sherds
2	378	0.8	Burnt bone	
2	378	156	Pot	Plain body sherds
2	378	8	Stone	Unworked quartz
2	386	5	Pot	Modern white glazed
2	400	16	Pot	Plain body sherds
2	406	7	Pot	Plain body sherds
2	416	0.6	Burnt bone	
2	416	3422	Pot	Large sherds, including rims of different vessels
2	416	3000	Stone	Possible pivot stone, very shallow depression on one side
2	417	3	Cannel coal	3 pieces of worked cannel coal, unfinished object, broken before completed. Partly polished. Possible bangle?
2	424	22	Pot	Plain body sherds
2	427	425	Pot	Plain body sherds

House	Context	Wt (g)	Material	Description
2	437	3.6	Burnt bone	
2	437	108	Pot	Includes rim sherds
2	463	36	Pot	Plain body sherds
2	464	70	Cannel coal	Natural black shale/cannel coal
2	468	165	Cannel coal	Natural black shale/cannel coal
2	468	1	Stone	Grey flint
2	472	30	Pot	Plain body sherds
2	484	40	Pot	Plain body sherds
2	487	22	Pot	Plain body sherds
2	487	13	Stone	Unworked quartz
2	Cleaning	235	Pot	Includes rim sherds
2	Cleaning	250	Pot	Plain body sherds
2	Cleaning	178	Pot	Plain body sherds
2	Cleaning	100	Pot	Plain body sherds
2	Cleaning	196	Pot	Plain body sherds
3	391	186	Pot	Includes rim sherds
3	393	2	Slag	Vitrified material
3	Cleaning	648	Pot	Includes rim sherds
3	Cleaning	52	Pot	Plain body sherds
3	Cleaning	101	Pot	Plain body sherds
3	Cleaning	30	Pot	Plain body sherds
3	Cleaning	126	Pot	Includes rim sherds
3	Cleaning	33	Stone	Stone spindle whorl
3	Slot 2	67	Pot	Includes rim sherds
3	Upper fill	640	Stone	Stone loom weight, hole drilled from both sides
4	003	400	Stone	Natural stone
4	006	25	Pot	Plain body sherds
4	009	21	Pot	Rim sherd
4	012	282	Pot	Includes rim sherds
4	027	15	Pot	Modern pale blue china
4	045	6	Pot	Plain body sherds
4	048	94	Pot	Plain body sherds
4	049	517	Pot	Includes rim and base sherds
4	097	76	Pot	Plain body sherds
4	110	3.5	Burnt bone	
4	123	587	Pot	Plain body sherds
4	145	506	Pot	Includes rim sherds
4	163	70	Pot	Plain body sherds
4	163	15	Stone	Unworked white quartz
4	cleaning	2.4	Burnt bone	large mammal
4	Cleaning	13	Stone	White quartz
5	169	0.6	Burnt bone	
5	169	1	Stone	Flint fragment
5	169	141	Stone	Possible hammer stone
5	169	225	Stone	White quartzite pebbles/chips, probably natural
5	188	57	Pot	Plain body sherds
5	191	72	Pot	Plain body sherds
5	202	52	Pot	Plain body sherds
5	215	2	Bone	Bone
5	215	123	Pot	Plain body sherds

House	Context	Wt (g)	Material	Description
5	227	75	Pot	Plain body sherds
5	229	85	Pot	Plain body sherds
5	230	42	Pot	Plain body sherds
5	239	23	Pot	Plain body sherds
5	257	10	Pot	Plain body sherds
5	cleaning	1.2	Burnt bone	
6	489	1.5	Burnt bone	
6	495	2.5	Burnt bone	1 frag skull, could be human but all v abraded
6	508	5.2	Burnt bone	large mammal rib
6	508	72	Pot	Includes a base sherd
6	520	1.9	Burnt bone	
6	522	1.8	Burnt bone	
6	522	3.1	Burnt bone	large mammal
6	544	0.2	Burnt bone	
6	548	2.3	Burnt bone	
6	576	2.2	Burnt bone	
Ext	073	3.5	Burnt bone	animal
Ext	086	4.6	Burnt bone	animal
Ext	086	150	Pot	Includes rim sherds
Ext	086	2	Stone	Orange flint/quartz
Ext	087	1.1	Burnt bone	
Ext	129	3.1	Burnt bone	
Ext	413	29	Pot	Plain body sherds
Ext	Palisade fill (073)	1273	Stone	Broken probable stone loom weight
Tr 115	Cleaning	20	Pot	Plain body sherds



Key:



Fig. No:

1

Revision:

0

Client:

Ochill Developments (UK) Ltd

Title:

Golf Area P. Location Map

Project:

gWest

Scale:



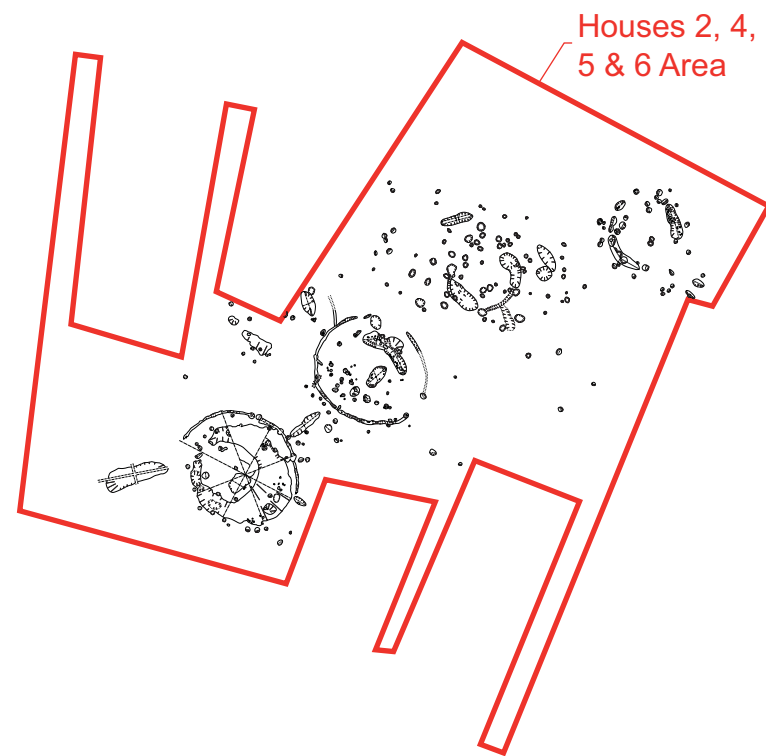
CFA ARCHAEOLOGY LTD
The Old Engine House
Eskmills Park
Musselburgh
East Lothian, EH21 7PQ
t: 0131 273 4380
f: 0131 273 4381
e: info@cfa-archaeology.co.uk
w: www.cfa-archaeology.co.uk

Drawn by:

KC

Page No:

0



Key:



Fig. No: 2 Revision: 0

Houses 2, 4 & 6 Area
Post-excavation Plan.

Project:
gWest

Scale:
1: 100 @ A1

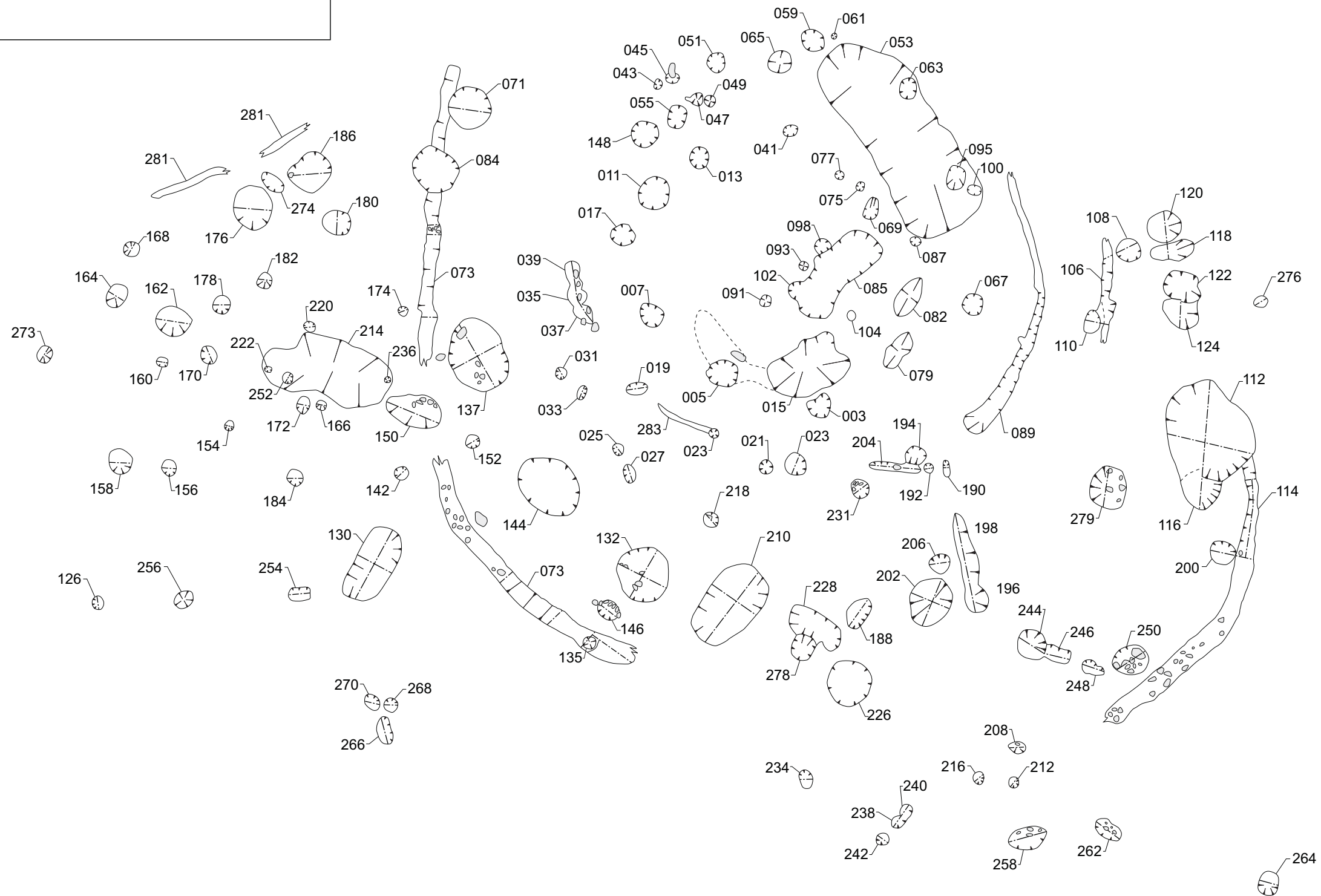
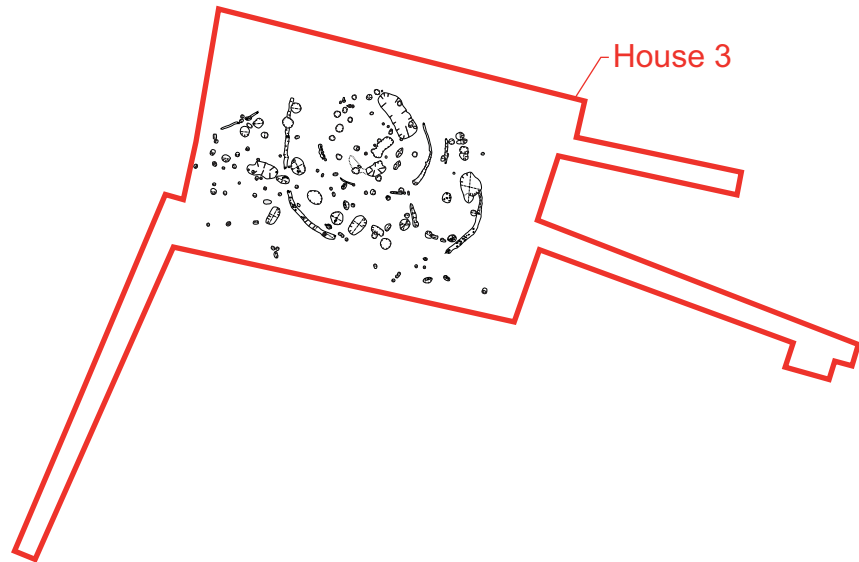
Client:
Ochill Developments (UK) Ltd.

Drawn By: KC Page No: 0



IFA-registered archaeological organisation

Key:



CFA ARCHAEOLOGY LTD
The Old Engine House
Eskmills Park
Musselburgh
East Lothian, EH21 7PQ
t: 0131 273 4380
f: 0131 273 4381
e: info@cfa-archaeology.co.uk
w: www.cfa-archaeology.co.uk

Fig. No:	3	Revision:	0
----------	---	-----------	---

Title:
House 3. Post-excavation Plan

Project:
gWest

Scale:
1: 100 @ A3

Client:
Ochill Developments (UK) Ltd

Drawn by: KC Page No: 0