

CFA ARCHAEOLOGY LTD

July 2008

Commissioned by Scottish Power Ltd

This document has been prepared in accordance with CFA Archaeology Ltd standard operating procedures.

Author:	Date
Approved by:	Date
Draft/Final Report Stage:	FINAL

Author: Phil Richardson BA MA FSA Scot PIFA

Surveyor/Illustrator: Leeane Whitelaw BA

Editor: Mike Cressey HND BA MSc PhD FSA Scot MIFA

CFA ARCHAEOLOGY LTD

The Old Engine House
Eskmills Business Park
Musselburgh EH21 7PQ

Tel: 0131 273 4380

Fax: 0131 273 4381

Email: cfa@cfa-archaeology.co.uk

**High Alderstocks Steading,
West Brown Castle, Strathaven, Lanarkshire
Standing Building Survey**

Report No. 1525

CONTENTS

1.	Introduction	3
2.	Methodology	5
3.	Archaeological Results	6
4.	Discussion	13
5.	Recommendations	13
6.	References	14

Appendices

1.	Photographic Register	15
3.	Exterior Context Register	18
2.	Discovery and Excavation in Scotland Entry	21

Illustrations (bound at rear)

1.	Site Location map
2-3.	Historical map extracts
4	South facing elevation of Farmhouse and Ranges
5	North facing elevation of Farmhouse and Ranges
6	West facing elevation of East Range
7	East facing section of West Range
8-9	Building layout plans and farmhouse first floor layout plan
10	Section through farmhouse and East Range

Plates

1:	General shot of farmstead
2:	Farmhouse, south facing elevation
3:	Farmhouse, north facing elevation
4:	Farmhouse, west facing elevation
5:	Farmhouse, east facing elevation
6:	Farmhouse interior, kitchen
7:	Farmhouse interior, living room
8:	Farmhouse interior, landing
9:	Farmhouse interior, bedroom
10:	Farmhouse interior, box room
11:	Farmhouse interior, bedroom
12:	East Range, west facing elevation
13:	East Range, south facing elevation
14:	East Range, north facing elevation
15:	East Range interior, passage
16:	East Range interior, saddle room

- 17: East Range interior stables
- 18: West Range, east facing elevation
- 19: West Range, south facing elevation
- 20: West Range, north facing elevation
- 21: West Range interior, southern compartment
- 22: West Range interior, central compartment
- 23: West Range interior, northern compartment
- 24: General shot of barns to east of steading
- 25: General shot of buildings to west of steading

1. INTRODUCTION

1.1 General

1.1.1 This report presents the results of a standing building undertaken by CFA Archaeology Ltd (CFA) in July 2008 at High Alderstock, West Brown Castle, Strathaven, Lanarkshire (Figure 1, NGR: NS 61004490). Planning permission (EK/08/0230) has been granted for the demolition of High Alderstocks steading subject to a programme of standing building survey. Scottish Power Ltd commissioned the work.

1.1.2 A Written Scheme of Investigation was produced based on documents supplied by Scottish Power Ltd and in consultation West of Scotland Archaeology Service (WoSAS) who requested that a standing building survey be undertaken before the demolition of the Steading.

Stage 1 Building recording

1.1.3 WoSAS required a Level 2 standing building survey, carried out according to the specification described in English Heritage (2006). This level of survey provides analysis of the form, function and fabric of the farm buildings. The architect's drawings confirmed that the steading occupies a U-shaped plan around a courtyard comprising a farmhouse and east and west ranges (Plate 1). A group of barns are situated to the east of the buildings (Plate 24). A smaller, detached animal house is present to the west side of the west range (Plate 25).

1.2 Objectives

Standing Building Survey

1.2.1 The objectives of the standing building survey were:

- To carry out a desk-based assessment and place the buildings in their historical context;
- To produce Level 2 photographic and written record of the buildings exterior and interior prior to their demolition;
- To produce a basic photographic survey of the outbuildings
- To produce a Historic Building Survey report outlining the results of the work.

2. METHODOLOGY

2.1 General

- 2.1.1 CFA follows the *Descriptive Specification for Recording Historic Buildings* (English Heritage 2006) guidelines for Historic Building Survey. All on-site recording was carried out according to standard CFA procedures, principally by survey, by photography and by completing standard CFA record forms.

Desk-based assessment

- 2.1.2 A desk-based assessment was carried out prior to the commencement of fieldwork in order to collate relevant information on the historic development of the steading. Sources consulted included the National Monuments Record of Scotland (NMRS), early map coverage of the area, and historical documents.

Standing building survey

- 2.1.3 A Level 2 standing building survey was carried out on the interior and exterior of all the steading buildings that appear on the Ordnance Survey First Edition map. Elevations suitable for survey were selected on the grounds that they contain sufficient historical detail which best portrays both the chronological and architectural character of the farmstead. Important architectural features were given unique context identification numbers on all external elevations (appendix 2). The outbuildings, considered to be of lower archaeological interest by WoSAS, were confined to a photographic survey and supported by an appropriate narrative.
- 2.1.4 All external fabric recording was carried out at 1:1 using an industry-standard, reflectorless Total Station (REDM) Leica TCR 307 linked with PenMap, to capture relevant fabric detail for preparation into AutoCAD. Control points on eaves, windows, doors and corners were surveyed. The survey drawings produced were combined with the photographic record and rectified within AutoCAD following the recommendations outlined in Section 5 *Metric Survey: Standard Specification for an Architectural Survey* (English Heritage 2000).
- 2.1.5 The south and north elevations of the farmhouse and ranges were produced, together with the west facing elevation of the East Range and east facing elevation of the West Range. The floor layouts were also produced in plan together with a section through the Farmhouse and East range (figure 9).
- 2.1.5 A photographic survey was carried out on all the buildings using a digital Nikon D100 SLR. A photographic record is included in Appendix 1.

3. ARCHAEOLOGICAL RESULTS

3.1 Desk-Based Assessment

General

- 3.1.1 The National Monuments Record of Scotland holds the records for two sites within 1.5km of the steading at High Alderstocks. Two turf enclosures and a stone and turf bank (NMRS no. NS64SW5) lie on rough pasture to the north of High Alderstocks farm. A clearance cairn (NMRS no. NS64SW4), measuring 3m in diameter by 0.5m high lies to the east of High Alderstocks farm at Drumreevough. The NMRS contains no records on High Alderstocks.

Cartographic (figures 2 and 3)

- 3.1.2 The name High Alderstocks appears on Roy's Military map of 1747-55, thus confirming that settlement at the farm dates back at least 250 years. A U-shaped arrangement of buildings with an adjoining enclosed garden to the west and an enclosure to the north east is depicted on the Ordnance Survey (OS) First Edition of 1863 (Fig 3a). On the 1898 Second Edition OS map (Fig 3b) the U-shaped building is shown whilst the garden to the west is shown as two enclosures, one within the other. The enclosure to the north east is depicted as part of the eastern field. The current OS 1:25000 edition shows that the U-shaped buildings have remained unaltered and occupy the same layout as the First Edition. A rectangular building is also depicted to the east of the farm buildings.

Bibliographic

- 3.1.3 The Statistical Accounts of Scotland were examined, the New Statistical Account for Lanark mentions Alderstocks (1834-45: 878) but provided no relevant detail relating to High Alderstocks farm.

3.2 Standing Building Survey

This section describes the building recording of both exterior and interior features. The internal rooms were given unique identification numbers which are summarised in the table below;

Unit	Room Name	Building
Unit 1	Passage and Inner Hall	East Range
Unit 2	Saddle Room	East Range
Unit 3	Bathroom	East Range
Unit 4	Stables	East Range
Unit 5	Kitchen	Farmhouse
Unit 6	Living Room	Farmhouse
Unit 7	Bedroom 1	Farmhouse
Unit 8	Landing	Farmhouse
Unit 9	Boxroom	Farmhouse
Unit 10	Bedroom 2	Farmhouse
Unit 11	Southern compartment	West Range
Unit 12	Northern compartment	West Range
Unit 13	Central compartment	West Range

Table 1 Summary table of the room layout terminology (figures 8 and 9).

Summary description

- Farm House (Building 1), Two storey house, modernised in the 20th century when the dormers were inserted in the upper storey.
- East Range (Building 2) single storey. Former stables, which were later connected to the farmhouse, within which rooms were inserted into the northern part. The southern half was still used for animals.
- West Range (Building 3), single storey. A former cattle byre converted into sheds and a workshop.
- A single storey Dutch barn, Pole barn and associated lean-to barns to the east of the U-shaped buildings
- A single storey outhouse attached to the western elevation of the West Range

East Range (north gable, figure 5, Plate 14)

- 3.2.1 The fabric was a pebble dashed harling over coursed rubble stone wall. The gable at the north end of the East Range had been altered to accommodate the insertion of a modern steel pipe, associated with the boiler in the entrance passage. The scar from this insertion had been filled with concrete and broken brick. A two pane, white painted, wooden framed with a raised margin was present in the west of the elevation. Apart from these features the wall was plain.

East Range (east facing elevation)

- 3.2.2 The east-facing elevation contained the Pole Barn, which occupies the space between the East Range and the Dutch barn. Consequently most of the features of the elevation are masked. The elevation had a doorway and two windows all with raised margins. The southern most window had a modern white UPVC window frame. The door was a plank built wooden door on iron hinges. The fabric was white washed, cement rendered coursed stone rubble.

East Range (south gable, figure 5, Plate 13)

- 3.2.3 The gable at the south end of the East Range had the same fabric as the northern gable. The elevation had a wooden window, which had been white washed, and raised margin. The roughly dressed quoins were visible, through the render on both edges of the elevation. Two pipes had been inserted at the base of the wall, the scar for which had been crudely filled with rendered stone rubble.

East Range (west elevation, figure 6, Plate 12)

- 3.2.4 The west-facing elevation of the East Range faced into the U-shaped courtyard. It contained five metal-framed skylights in the slate tile roof. The upper portion of the roof was made up of smaller slates than the majority of the roof. A felt and lead roof ridge was present on the top of the roof. The fabric was white washed, cement rendered coursed stone rubble and the quoins were visible through the render in the south. The door was a moulded wooden

panel door, with a raised margin. In front of the door a light metal framed, plastic panelled porch lean-to was present. The porch measured 3.5m long by 1.8m wide by 2.12m high and had a sloping corrugated plastic roof and was built on a concrete base.

East Range interior details (figure 9)

- 3.2.5 The East Range contained a number of rooms associated with the farmhouse and a stable with animal stalls. The timber a-frame roof rested directly on the wall head. The floor was concrete and of recent age.
- 3.2.6 The entrance passage and inner hall (Unit 1, Plate 15) provided access to the stables, bathroom, saddle room and kitchen. The ceiling was terracotta painted Artex and the floor was cork tiles over concrete. The western walls of the passage were lined by blue plastic (Respatex) sheeting. The other walls were of painted Artex, over plastered stone, similar to the ceiling. An oil fired boiler was present against the northern wall to the left of a two pane wooden window. An extension passage built between the inner hall and kitchen contained a meter cupboard which housed a water tank and meters.
- 3.2.7 The saddle room (Unit 2, Plate 16) was lit by a six pane wooden window in the east wall of the Range. The floor was brown carpet over concrete, whilst the ceiling and walls were dark stained, tongue and groove wooden panelling with a plain skirting board (0.12m) below. The door (1.98m high by 0.76m wide) was a moulded wooden panel door with a brass handle.
- 3.2.8 The bathroom (Unit 3) contained a modern, pearl white, bathroom suite with blue painted Artex ceiling, wood effect linoleum flooring and green plastic (Respatex) covered walls. The walls around the bath had been tiled. The door (1.98m high by 0.76m wide), matched the saddle room door and was a moulded wooden panel door with a brass handle. A recent, white UPVC window lit the room from the eastern wall. The ceiling, was plaster board which had been inserted into the rafters at the height of the bulkheads.
- 3.2.9 The stables (Unit 4, Plate 17) continued the original build of the range. The walls were, white washed, cement rendered coursed rubble. The floor was bare concrete of recent date. A wooden planked door (1.88m high by 1.01m wide) on iron hinges led to the Pole barn to the east. Another plank door (1.92m high by 0.92m wide) led from the stable to the passage. Two single and one double box stalls were arranged along the western and southern walls.

Farmhouse (North elevation figure 5, Plate 3)

- 3.2.10 The north elevation was built of cement rendered coursed sandstone blocks, the quoins were not visible. A smoothed area of cement rendering completely masked the western quoins. A rubble and concrete damp course skirt, 0.65m high, was present at the base of the wall. The elevation was 3m high to the eaves. The elevation contained a doorway, two windows and a metal-framed skylight. The windows and door had black painted raised margins, of which the door and the western window appear to be have been later inserts. The

western window was a modern UPVC window. In front of the back door a light metal framed, plastic panelled porch lean-to was present. The porch, measured 3.6m long by 2.4m wide by 2.12m high and was built on a concrete base.

Farmhouse (East Gable, Plate 5)

- 3.2.11 The east gable fabric below the eaves was rendered coursed stone rubble. The fabric above the eaves was a pebble dashed harling over coursed rubble stone wall. Black painted wooden bargeboards were present on both edges of the roof. The East Range was connected to the farmhouse on the south of this elevation, otherwise the elevation was featureless.

Farmhouse (South elevation (figure 4, Plate 2)

- 3.2.12 The south elevation was built of well-coursed cement rendered sandstone blocks and faced the U-shaped courtyard. The quoins were not visible. A rubble and concrete damp course skirt, 0.31m high, was visible at the base of the wall. A breeze block wall had been inserted into the gap between the Farmhouse and the East Range creating the passage that connected the kitchen to the East Range. A large stone lintel and sloping slate roof had capped this wall. The elevation contains a doorway, all of which had black painted raised margins. The door was a moulded wooden door with a single pane of frosted glass and two steps lead up to the entrance. The two windows were modern UPVC. Three dormer windows had been inserted into the roof. The dormer windows had wooden frames and felt covered the sides. The upper portion of the roof, above the dormers was made up of smaller slates than the majority of the roof. A felt and lead roof ridge is present on the top of the roof. Harled chimney, cornice stacks were present at both gables and both were capped with concrete caps.

Farmhouse (West gable, Plate 4)

- 3.2.13 The west-facing gable had a large chimneystack, 1.6m wide, protruding from the wall by 0.13m. The fabric above the eaves was a pebble dashed harling over coursed rubble stone wall. Black painted wooden bargeboards were present on both edges of the roof. Apart from these features the wall was featureless.

Farmhouse interior details (figure 8 and 9)

- 3.2.14 The Farmhouse contained two rooms on the ground floor and a further four on the first floor. The ground floor consisted of the kitchen and living room. The first floor had been inserted and into the former loft space and consisted of two bedrooms a boxroom and a landing.
- 3.2.15 The kitchen (Unit 5, Plate 6) measured 5.5m long by 4.9m wide. The light wood units, formica worktop and white goods were all of recent date. The floor was concrete covered in wood effect linoleum and the ceiling was covered in green painted woodchip wallpaper. The walls were covered in

green plastic (Respatex) sheets, except above the sink and oven, on the east wall, which was tiled. The kitchen was lit by a two-pane UPVC window, which had green painted splayed wooden ingoos. The back door (1.84m high by 0.6m wide) was of a simple moulded soft with two vertical glass panes. A plank wooden door (1.89m high by 0.88m wide) with a brass handle led to the living room.

- 3.2.16 The living room (Unit 6, Plate 7) walls were white washed stone except the southern wall, which was, exposed stone. It had a pine tongue and groove panel ceiling. A large moulded wooden door (2.1m high by 0.91m wide) on the south wall led to the exterior courtyard. The room was lit by a two-pane UPVC window on the north wall, and a two-pane UPVC window on the south wall. A fireplace, with stone hearth stood in the centre of the west wall. An open wooden staircase lit by a small wooden window on the south wall and a skylight above led to the first floor.
- 3.1.17 A narrow first floor landing Unit 8, Plate 8) at the top of the stairs led to two bedrooms and a boxroom. The landing itself was 2.12m long by 0.96m wide and had a brown carpet over wooden floorboard floor. The ceiling and upper part of the walls was magnolia painted Artex.
- 3.1.18 The eastern bedroom (Bedroom 1, Unit 7, Plate 9) was a Mansard roof conversion inserted into the former loft space and measured 5.72m long by 4m wide. The ceiling was a lightly stippled Artex, painted pink, which covered a plaster board ceiling. A pale brown carpet covered floorboards on the floor. White painted woodchip wallpaper covered the east and west walls, whilst coloured wallpaper covered the north and south walls. The room was lit by an eleven-pane metal-framed window in the south wall. A soft wood panel door in the west wall led to the landing. A built in cupboard with potential access to the loft was built against the west wall.
- 3.1.19 The box room (Unit 9, Plate 10) measured 2.78m long by 1.39m wide and was lit by an eleven-pane metal frame window in the south wall. The walls were pink painted woodchip wallpaper over timber framed plaster board partition walls.
- 3.1.20 The western bedroom (Bedroom 2, Unit 10, Plate 11) was a Mansard roof conversion inserted into the former loft space in the same manner as Bedroom 1, and measured 4.18m long by 4m wide. The ceiling was a white painted plasterboard ceiling. A pale brownish green carpet covered floorboards on the floor. The walls were covered in unfinished textured wallpaper. The room was also lit by an eleven-pane metal framed window in the south wall. A soft wood panel door in the east wall led to the landing. A built in cupboard between the south wall and door contained shelves and storage hooks.
- 3.2.21 The loft above Bedrooms 1 and 2 contained an A-frame timber roof with short joists, associated with the insertion of the mansard conversion, resting on the wall head. No other details could be gathered due to the unsafe nature of the floor and difficulty in obtaining access.

West Range (north gable, figure 5, Plate 20)

- 3.2.22 The gable fabric was rendered coursed stone rubble, but otherwise featureless. The scar of a former building abutting the West range was visible as an area of lighter plaster. The scar measured 1.76m high by 2.8m wide and the surviving stone floor protruded 2.12m to the north. No evidence of the former walls or roof was noted

West Range (east facing elevation, figure 7, Plate 18)

- 3.2.23 The east-facing elevation of the West Range faces into the U-shaped courtyard. The fabric is white washed, cement rendered coursed stone rubble and the quoins are visible through the render at both gables. Large rubble foundation stones are visible at the base of the wall. The elevation contains a splayed slit vent c. 1.5m above the present ground level. The vent measured 0.5m by 0.10m. The upper portion of the roof was made up smaller slates than the majority of the roof. A felt and lead roof ridge was present on the top of the roof. The roof contains three metal-framed skylights. The elevation has three doorways with lightly cement rendered whitewashed, raised margins. The southern most door was a two part wooden plank door (0.96m wide by 1.98m high) with iron hinges, and had a stone lintel. The central door (2.3m wide by 2.4m high) had a wooden frame with metal sheet exterior and was a double sliding door with a wooden lintel. The northern door (1.32m wide by 2.4m high) was a single sliding door similar to the central door.

West Range (south gable, figure 4) Plate 19)

- 3.2.24 The elevation contains three splayed slit vents, two below the eaves and one above. The vents measure 0.5m by 0.10m. The fabric was rendered coursed stone rubble with large rubble foundation stones and quoins visible through the render.

West Range (west elevation)

- 3.2.25 The west-facing elevation of the West Range contained two, splayed slit vents (measuring 1.5m by 0.10m) c. 1.5m above the present ground level. Only the southern vent was visible due to the construction of a harled brick outbuilding, which abutted the West Range. This outbuilding (Plate 25) had two stalls with a fenced enclosure in front. It measured 4.4m wide by 3.6m long. The roof contained two metal-framed skylights. Quoins were visible through the render at both gables. A number of fences were present against the northern part of the elevation.

West Range interior details (Figure 9, Plates 21-23)

- 3.2.26 The west range was divided into three stables/loose boxes (Units 11-13) and had last been used for storage. Work benches were present in the northern compartment and this may have been a workshop. The wall between the northern and central compartments may have been reduced to accommodate

extra storage. The present A-frame timber roof rests directly on the wall head. The floor is concrete and of recent age.

Dutch Barn, Pole barn and associated lean-to sheds (Plate 24)

- 3.2.27 A Dutch barn, corrugated tin roof and walls, measuring 52m by 8m was present to the east of the U-shaped buildings. It was divided into 5 bays and contained a bulk feeder tank. Between the Dutch barn and the East range a Pole barn (14.5m long by 12.5m wide) with a wooden slatted roof and walls was built against the east wall of the East Range. Another timber-framed lean-to with corrugated tin walls was built against the southern wall of the Dutch barn.

4. DISCUSSION

Building survey

- 4.1 The building survey confirms that High Alderstocks Steading has occupied the same building footprint since the early 19th century. The East Range was connected to the farmhouse and the northern portion converted to more domestic use, probably in the later 20th century. The Farmhouse itself was enlarged through the insertion of three dormers, again, probably in the later 20th century. The West Range continued to be used as a stable and storage/workshop area.
- 4.2 The Dutch Barn and Pole shed, were built in the Twentieth century, and are largely unaltered, with the exception of the addition of the lean-to corrugated tin shed.
- 4.3 The original 19th century enclosures to the west of the buildings continued to be used in their original form although probably for different purposes, most latterly for the keeping of fowl.

5. RECOMMENDATIONS

- 5.1 The Level 2 survey carried out at High Alderstocks Steading provides an adequate record of the buildings prior to their demolition and therefore no further recording work is required.
- 5.2 The project archive, comprising all CFA record sheets, maps and reports will be deposited with the National Monuments Record of Scotland (NMRS).
- 5.3 A summary statement will be submitted for publication in *Discovery and Excavation in Scotland 2008* (Appendix 3).

6. REFERENCES

Cartographic sources consulted

Roy 1747-55 *Military Map of Scotland*

OS 1st Edition 1863 6" 'Lanarkshire Sheet XXII'

OS 2nd Edition 1897 6" 'Hamilton Sheet XXII.'

Bibliographic

English Heritage 2000 *Survey: Standard Specification for an Architectural Survey*

English Heritage 2006 *Understanding Historic Buildings: A guide to good recording Practice*

APPENDIX 1

Photographic Record

Digital Photographic Register (standing building survey)

Shot no	Description	From	Conditions
DSC_2136	West Range, south elevation	S	O/C
DSC_2138-40	West Range, south elevation	S	O/C
DSC_2141	Farmhouse, south elevation	S	O/C
DSC_2143-4	Farmhouse, south elevation	S	O/C
DSC_2145-6	West Range, east elevation	E	O/C
DSC_2147-8	East Range, west elevation	W	O/C
DSC_2149-50	West Range, west elevation, showing associated outhouse	S	O/C
DSC_2151	West Range, north elevation	N	O/C
DSC_2152	Farmhouse, west elevation, angled shot	NW	O/C
DSC_2153	Farmhouse, north elevation	N	O/C
DSC_2154	East Range, north elevation	N	O/C
DSC_2155	East Range, north elevation, with farmhouse east elevation, angled shot	NE	O/C
DSC_2156	Dutch barn and associated sheds	NE	O/C
DSC_2157	West Range, west elevation, angled shot	NW	O/C
DSC_2158	Wire fences in front of west range west elevation	SW	O/C
DSC_2159-60	East Range, south elevation	S	O/C
DSC_2161	General shot of U-shaped buildings	S	O/C
DSC_2162	East Range, south elevation, showing associated shed	SW	O/C
DSC_2163	Dutch barn and associated sheds	S	O/C
DSC_2164	Corrugated iron shed between east range and Dutch barn	SE	O/C
DSC_2165-6	Corrugated iron shed between east range and Dutch barn	E	O/C
DSC_2167	General shot of U-shaped buildings	S	O/C
DSC_2173	East Range, interior, entrance passage	S	N/A
DSC_2174	East Range, interior, stable stalls	N	N/A
DSC_2176	East Range, interior, stable stalls	S	N/A
DSC_2178-9	East Range, interior, saddle room	SW	N/A
DSC_2181	East Range, interior, entrance passage	N	N/A
DSC_2182	East Range, interior, boiler cupboard interior	S	N/A
DSC_2184-5	East Range, interior, entrance passage to kitchen	E	N/A
DSC_2186-7	Farmhouse interior, kitchen, north facing elevation	N	N/A
DSC_2188	Farmhouse interior, kitchen, east facing elevation	E	N/A
DSC_2189	Farmhouse interior, kitchen, south facing elevation	S	N/A
DSC_2190	Farmhouse interior, kitchen, west facing elevation	W	N/A
DSC_2191-3	Farmhouse interior, living room, east facing elevation	E	N/A
DSC_2194	Farmhouse interior, living room, south facing elevation	S	N/A
DSC_2195	Farmhouse interior, living room, west facing elevation	W	N/A

DSC_2196	Farmhouse interior, living room, north facing elevation	N	N/A
DSC_2200	Farmhouse interior, bedroom 1, north facing elevation	N	N/A
DSC_2203	Farmhouse interior, bedroom 1, north facing elevation	N	N/A
DSC_2206	Farmhouse interior, bedroom 1, east facing elevation	E	N/A
DSC_2208	Farmhouse interior, bedroom 2, north facing elevation	N	N/A
DSC_2211	Farmhouse interior, bedroom 2, east facing elevation	E	N/A
DSC_2212	Farmhouse interior, bedroom 2, south facing elevation	S	N/A
DSC_2213	Farmhouse interior, bedroom 2, west facing elevation	W	N/A
DSC_2214	Farmhouse interior, landing	S	N/A
DSC_2218	Farmhouse interior, box-room	NW	N/A
DSC_2222	Farmhouse interior, landing	N	N/A
DSC_2223	East Range, bathroom, angled shot	NNE	N/A
DSC_2228	East Range, bathroom, angled shot	N	N/A
DSC_2229	Farmhouse and East Range	SW	O/C
DSC_2230	Farmhouse and East Range	SE	O/C
DSC_2231	General shot of U-shaped buildings	S	O/C
DSC_2232	East Range interior, southern compartment	S	N/A
DSC_2233	East Range interior, southern compartment	N	N/A
DSC_2234	East Range interior, central compartment	E	N/A
DSC_2235-6	East Range interior, northern compartment	SE	N/A
DSC_2237	East Range interior, northern compartment	NE	N/A
DSC_2238-40	East Range interior, northern compartment, roof structure	SE	N/A
DSC_2241	East Range interior, central compartment, roof structure	SW	N/A
DSC_2242-3	Farmhouse, south elevation showing East Range	W	O/C
DSC_2244	Farmhouse and West Range	S	O/C
DSC_2245	Farmhouse, south elevation showing East Range	W	O/C
DSC_2246	East Range, passage interior, roof detail	S	N/A
DSC_2247	East Range, stable interior, roof detail	N	N/A
DSC_2248	East Range, stable interior, roof detail	S	N/A
DSC_2249	East Range, stable interior, roof detail	S	N/A
DSC_2250	East Range, stable interior, showing associated shed entrance	W	N/A
DSC_2251	Corrugated iron shed interior	W	N/A
DSC_2252	Corrugated iron shed interior	SW	N/A
DSC_2253	East Range, passage interior, boiler detail	S	N/A
DSC_2254	Lean-to shed to south of Dutch Barn	W	O/C
DSC_2255	Corrugated iron shed interior	E	O/C
DSC_2256	Dutch Barn interior	SW	O/C
DSC_2257	Dutch Barn interior, detail of feed hopper	SE	O/C
DSC_2258	Dutch Barn interior	S	O/C
DSC_2259-60	Dutch Barn interior, detail of feed hopper	SE	O/C
DSC_2261-2	Interior of shed between East Range and Dutch Barn, showing East Range east elevation.	SE	O/C
DSC_2263	View from Dutch Barn entrance	N	O/C
DSC_2264	South facing elevation of shed associated with	SE	O/C

	East Range		
DSC_2265	Farmhouse interior, general shot of kitchen	SE	N/A
DSC_2266	Farmhouse interior, general shot of living room	SE	N/A
DSC_2267	Farmhouse interior, general shot of living room	NW	N/A
DSC_2269	Farmhouse interior, general shot of living room	NE	N/A
DSC_2271	Farmhouse interior, general shot of bedroom 1 roof structure	W	N/A
DSC_2273	Farmhouse interior, general shot of living room	SW	N/A
IMG_0096	Dutch Barn south facing elevation	S	O/C
DSCN_0152	Farmhouse interior, general shot of bedroom 1 roof structure	S	N/A
DSCN_0155	Farmhouse interior, general shot of bedroom 1 roof structure	W	N/A
DSCN_0157	Farmhouse interior, general shot of bedroom 1 roof structure	N	N/A
DSCN_0165	Farmhouse interior, general shot of bedroom 1 roof structure	N	N/A
DSCN_0185	East Range, entrance passage, detail of concrete plinth	N	N/A
DSCN_0188	Lean-to porch on East Range, west elevation	W	O/C
DSCN_0192	West Range, north elevation, close up of removed building scar	NE	O/C
DSCN_0193	West range, close-up of roof structure of southern compartment	S	N/A
DSCN_0197	General shot of U-shaped buildings	S	O/C

APPENDIX 2

Building contexts

Context	Component	Element	Summary description
001	Building 1- S elevation	Chimney	Concrete haunched cap of cornice stack
002	Building 1- S elevation	Cornice stack	Harled stone cornice stacks at east and west gables
003	Building 1- S elevation	Roof	Smaller slate roof tiles above dormers
004	Building 1- S elevation	Roof	Larger slate roof tiles of lower part of roof
005	Building 1- S elevation	Dormers	Three wooden framed dormer insertions
006	Building 1- S elevation	Rain goods	Black painted iron rain goods
007	Building 1- S elevation	Main build	Roughly skimmed dressed coursed stone fabric of building, white washed
008	Building 1- S elevation	Main build	Rubble and concrete 'skirt' at base of main build (007)
009	Building 1- S elevation	Windows	Dressed stone ground floor window surrounds
010	Building 1- S elevation	Windows	UPYC window frames of ground floor windows
011	Building 1- S elevation	Front door	Moulded wooden door
012	Building 1- S elevation	Front door	Dressed stone around doorway
013	Building 1- S elevation	Front door	Concrete step below doorway
014	Building 1- S elevation	Extension	Sloping slate roof between farmhouse and east range
015	Building 1- S elevation	Extension	Stone lintel below 014
016	Building 1- S elevation	Extension	Breeze block wall below 015
017	Building 1- S elevation	Extension	Rubble and concrete 'skirt' at base of wall (016)
018	Building 1- S elevation	Roof	Felt and lead roof ridge
019	Building 1- W elevation	Chimney	Chimney stack below cornice, finished in same material as 020
020	Building 1- W elevation	Main build	Pebble dashed harling on gable
021	Building 1 N elevation	Door	Moulded wooden door
022	Building 1- N elevation	Door	Dressed stone around doorway for 021, concrete repair at base
023	Building 1- N elevation	Windows	Dressed stone of window 024. Possibly original
024	Building 1- N elevation	Windows	Wooden 2 pane window
025	Building 1- N elevation	Windows	Dressed stone around window (026). Recent insertion
026	Building 1- N elevation	Windows	UPVC window
027	Building 1- N elevation	Rain goods	Black painted iron rain goods
028	Building 1- N elevation	Skylight	Rectangular metal framed skylight

029	Building 1- N elevation	Lean-to	Metal framed lean-to against kitchen door 021- clear plastic panels 2.4m wide by 3.6m long
030	Building 1- N elevation	Main build	Rubble and concrete 'skirt' at base of wall- same as 008
031	Building 1- N elevation	Roof	Pebble dashed harling of replacement dormer roof on east gable
032	Building 1- N elevation	Roof	Black painted wooden roof edging on gable walls

East and West Range

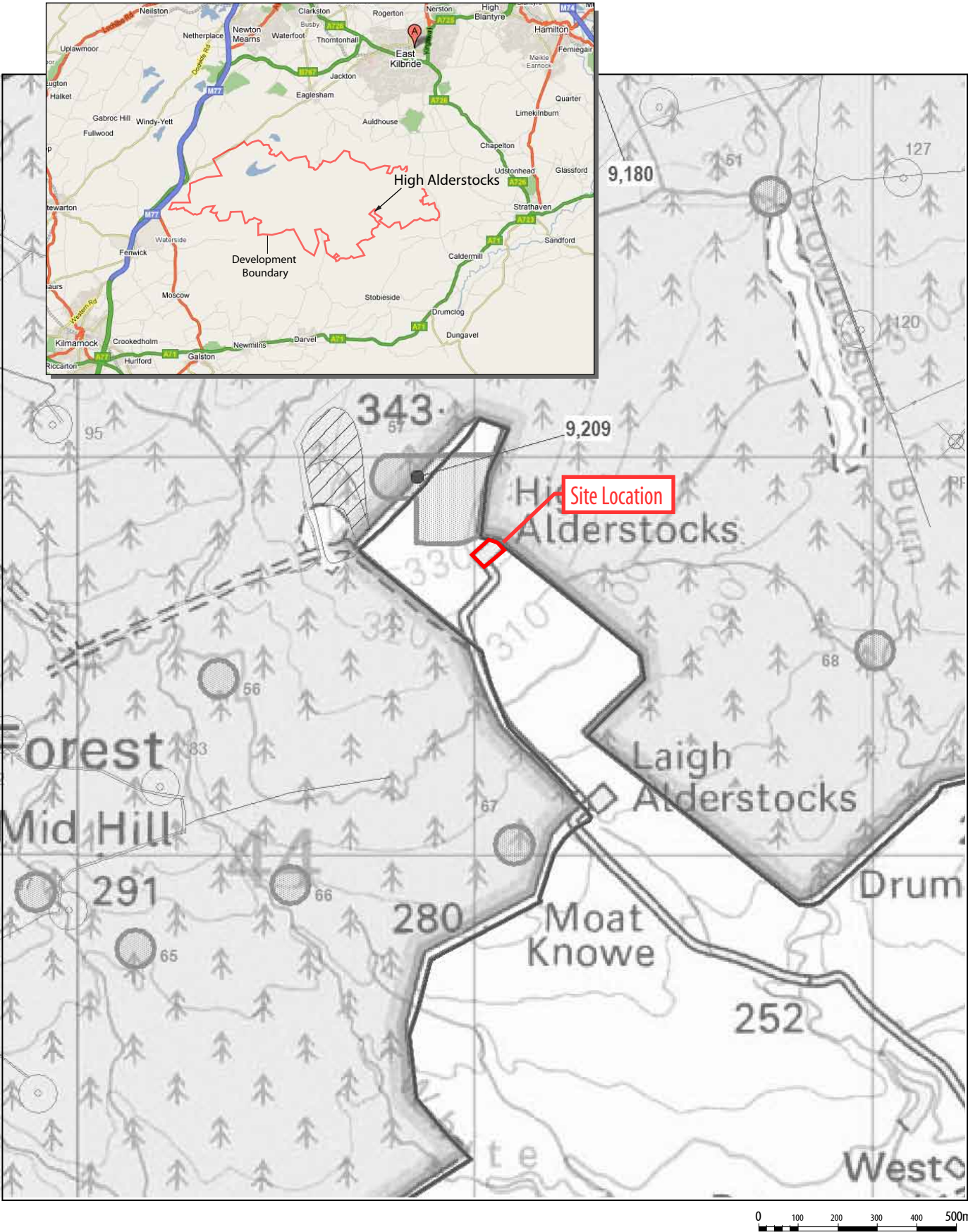
033	Building 2- N elevation	Steel pipe	Modern steel pipe
034	Building 2- N elevation	Steel pipe	Broken brick and stone repair around inserted pipe 033
035	Building 2- N elevation	Window	Dressed stone window surround
036	Building 2- N elevation	Window	Wooden window
037	Building 2- N elevation	Main build	Pebble dashed harling of stone gable wall
038	Building 3- N elevation	Main build	Pebble dashed harling of stone gable wall
039	Building 3- N elevation	Scar	Former building scar. Now removed
040	Building 3- E elevation	Roof	Smaller slate roof tiles above dormers
041	Building 3 E elevation	Roof	Larger slate roof tiles of lower part of roof
042	Building 3 E elevation	Skylights	Metal framed, two paned skylights
043	Building 3 E elevation	Quoins	Stone quoins at gable ends
044	Building 3 E elevation	Main build	Roughly cement rendered coursed rubble stone walls
045	Building 3 E elevation	Door	Double sliding door with wooden lintel. Central compartment
046	Building 3 E elevation	Door	Plank door to southern compartment
047	Building 3 E elevation	Door	Single sliding door to northern compartment
048	Building 3 E elevation	Roof	Lead ridge of roof
049	Building 3 E elevation	Slit vent	Narrow slit vent in south of wall
050	Building 3 E elevation	Foundation	Large rubble foundation stones
051	Building 3 E elevation	Rain goods	Black painted iron rain goods
052	Building 3 W elevation	Lean-to	Brick lean-to against building 3. 2 stalled animal house Possible kennels
053	Building 2- S elevation	Quoins	Stone quoins at gable ends
054	Building 2- S elevation	Main build	Roughly cement rendered coursed rubble stone walls
055	Building 2- S elevation	Rain goods	Black painted iron rain goods
056	Building 2- S elevation	Window	Wooden window frame with moulded stone surround
057	Building 2- S elevation	Drains	Inserted drain pipes from stables
058	Building 2- E elevation	Window	6 pane wooden window with rendered stone surround

059	Building 2- E elevation	Window	2 pane UPVC window with rendered stone surround
060	Building 2- E elevation	Door	Wooden plank stable door with rendered stone surround
061	Building 2- W elevation	Roof	Felt and lead roof ridge
062	Building 2- W elevation	Roof	Smaller slate roof tiles above dormers
063	Building 2- W elevation	Roof	Larger slate roof tiles of lower part of roof
064	Building 2- W elevation	Rain goods	Black painted iron rain goods
065	Building 2- W elevation	Skylight	6 pane metal framed skylight
066	Building 2- W elevation	Skylight	2 pane metal framed skylight
067	Building 2- W elevation	Door	Moulded wooden with rendered stone surround
068	Building 3- W elevation	Slit- vent	Narrow slit vent in south of wall
069	Building 2- W elevation	Lean-to	Metal framed lean-to against kitchen door 021- clear plastic panels 2.4m wide by 3.6m long

APPENDIX 3

Discovery And Excavation In Scotland Entry

LOCAL AUTHORITY:	Lanarkshire
PROJECT TITLE/SITE NAME:	High Alderstocks Steading Standing Building Survey
PROJECT CODE:	WHWB/SBS
PARISH:	East Kilbride
NAME OF CONTRIBUTOR:	P. Richardson
NAME OF ORGANISATION:	CFA Archaeology Ltd
TYPE(S) OF PROJECT:	Standing Building Survey
NMRS NO(S):	
SITE/MONUMENT TYPE(S):	Steading
SIGNIFICANT FINDS:	None
NGR (2 letters, 6 figures)	: NS 61004490
START DATE (this season)	9/7/08
END DATE (this season)	11/7/08
PREVIOUS WORK (incl. DES ref.)	
MAIN (NARRATIVE) DESCRIPTION: (May include information from other fields)	A programme of standing building recording was carried out at High Alderstocks, West Brown Castle by Strathaven in July 2008 by CFA Archaeology Ltd in advance of its demolition. The building survey confirms that High Alderstocks Steading has occupied the same building footprint since the early 19 th century. The East Range was connected to the farmhouse and the northern portion converted to more domestic use, probably in the later 20th century. The Farmhouse itself was enlarged upwards through the insertion of three dormers, again, probably in the later 20th century. The West Range continued to be used as a stable and storage/workshop area. The Dutch Barn and Pole shed were built in the Twentieth century and are largely unaltered, with the exception of the addition of the lean-to corrugated tin shed. The original 19th century enclosures to the west of the buildings continued to be used in their original form although probably for different purposes, most latterly for the keeping of fowl.
PROPOSED FUTURE WORK:	None
CAPTION(S) FOR ILLUSTRS:	
SPONSOR OR FUNDING BODY:	Scottish Power
ADDRESS OF MAIN CONTRIBUTOR:	The Old Engine House, Eskmills Park, Musselburgh, EH21 7PQ
EMAIL ADDRESS:	cfa@cfa-archaeology.co.uk
ARCHIVE LOCATION (intended/deposited)	The archive is intended for deposition in the NMRS. Reports have been lodged with NMRS and Perth & Kinross SMR.



Key:

Scale:



Fig. No:

1

Revision:

A

Client:

Scottish Power

Title:

Location Map

Project:

Whitelee Windfarm - High Alderstocks Farm,
Standing Building Survey

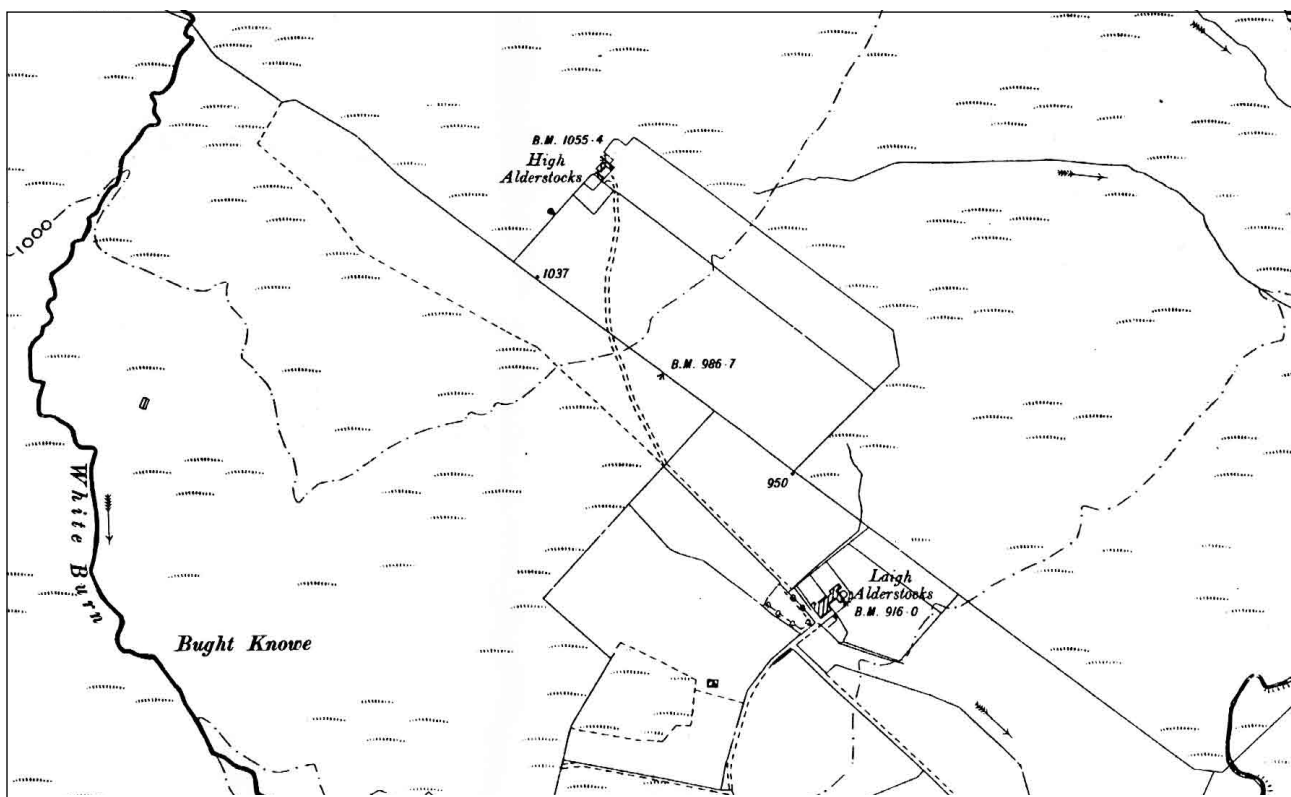
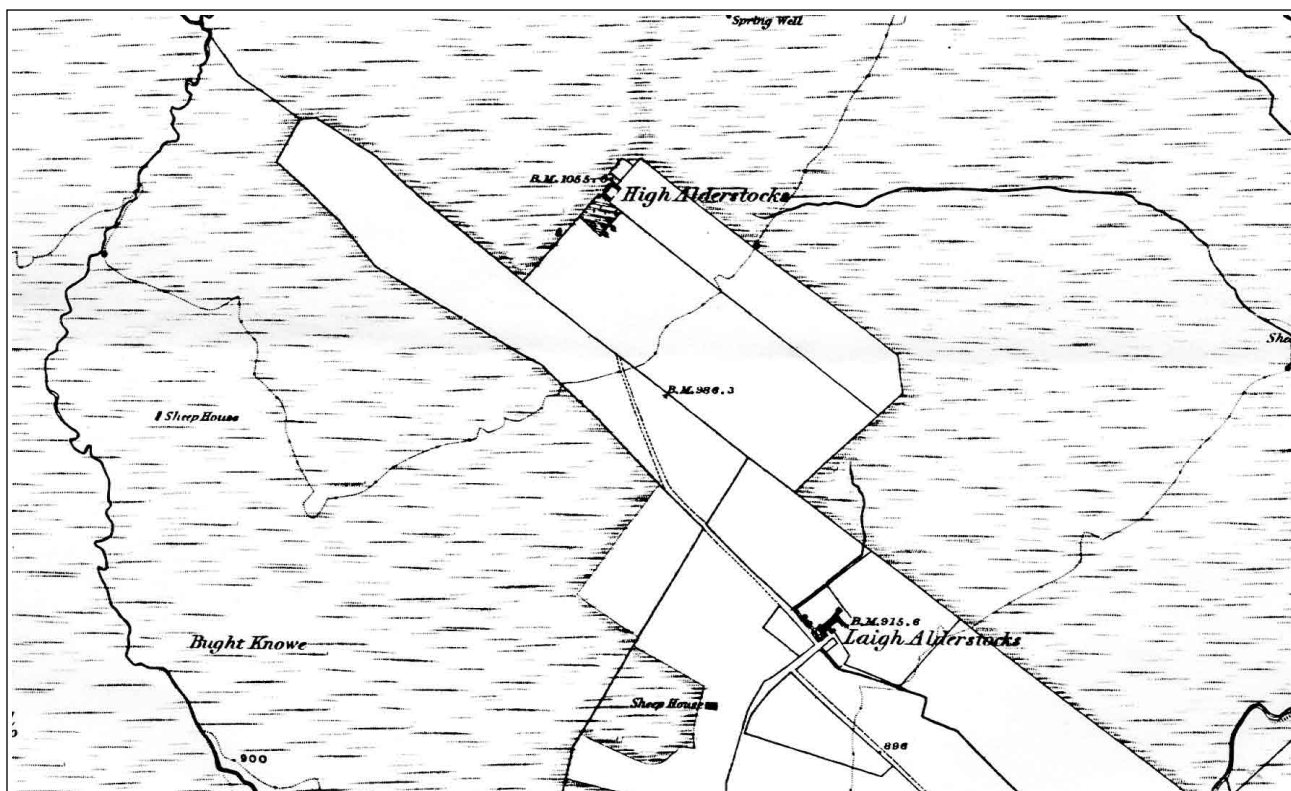


CFA ARCHAEOLOGY LTD
The Old Engine House
Eskmills Park
Musselburgh
East Lothian, EH21 7PQ
t: 0131 273 4380
f: 0131 273 4381
e: info@cfa-archaeology.co.uk
w: www.cfa-archaeology.co.uk

Drawn by:

KH

Page No:



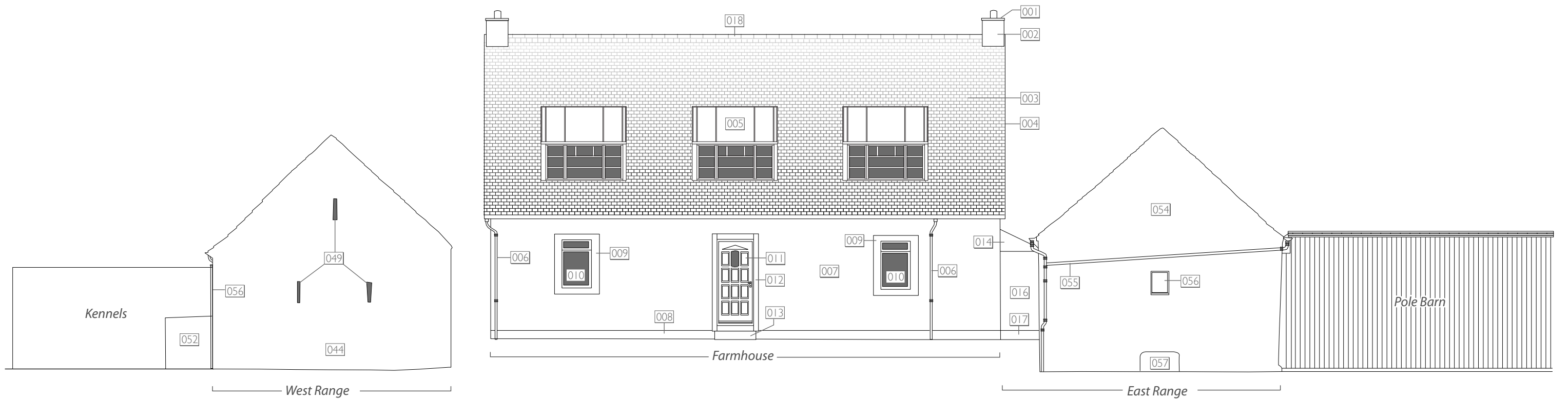


Fig 4 - South-facing elevation

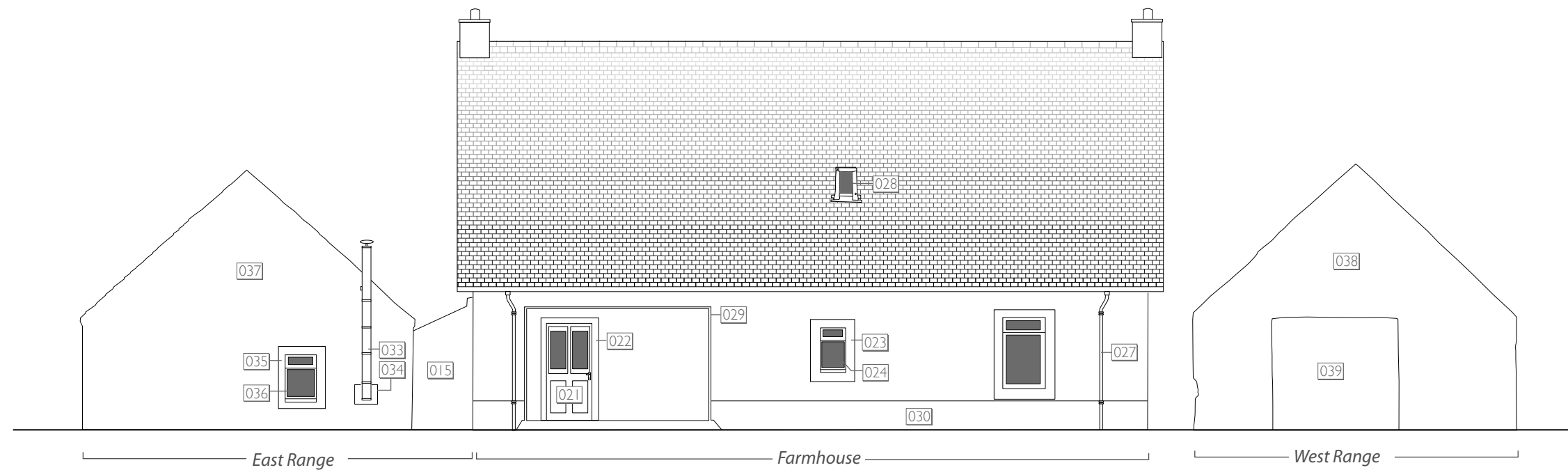


Fig 5 - North-facing elevation



Key:

CFA ARCHAEOLOGY LTD
 The Old Engine House
 Eskmills Park
 Musselburgh
 East Lothian, EH21 7PQ
 t: 0131 273 4380
 f: 0131 273 4381
 e: info@cfa-archaeology.co.uk
 w: www.cfa-archaeology.co.uk

Fig. No: **4,5** Revision: **A**

Title:
High Alderstocks elevations - North & South

Project:
Whitelee Windfarm - High Alderstocks Farm, Standing Building Survey

Scale:
1:100 @ A3

Client:
Scottish Power

Drawn by: **LW** Page No:

Key:

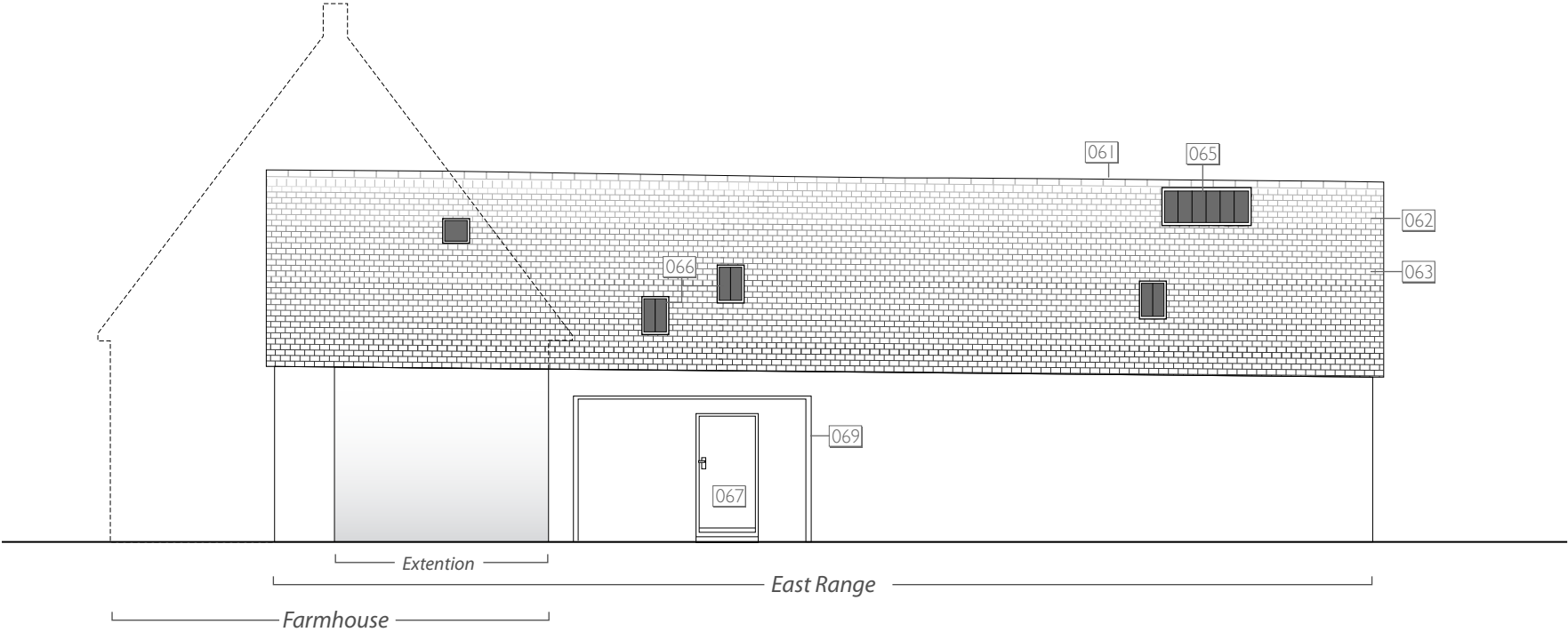


Fig 6 - West-facing elevation

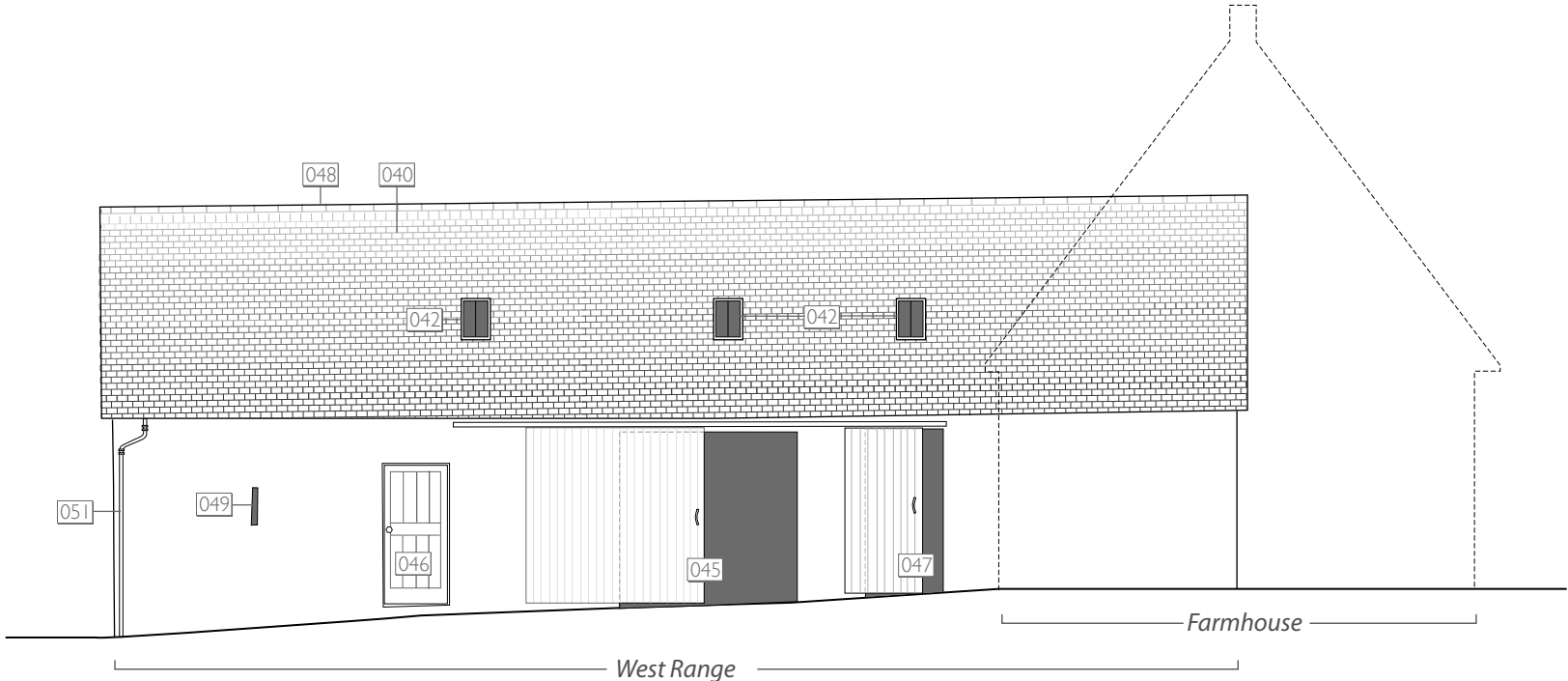


Fig 7 - East-facing elevation



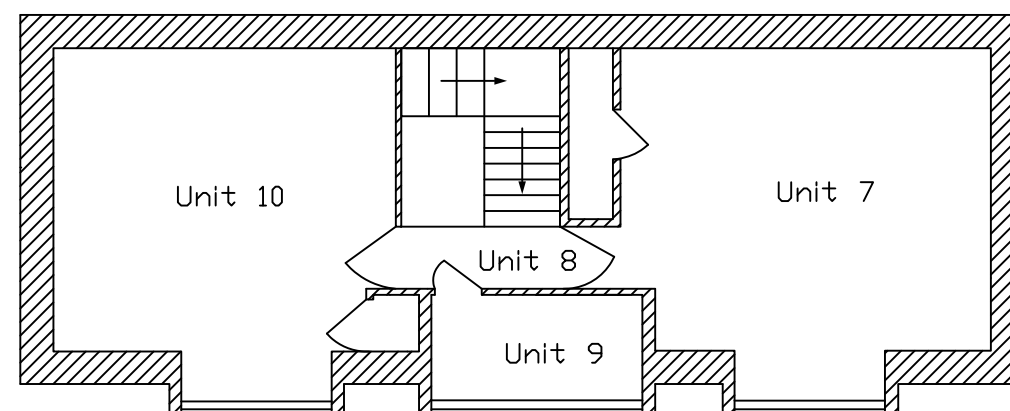


Fig 8 - Farmhouse First Floor

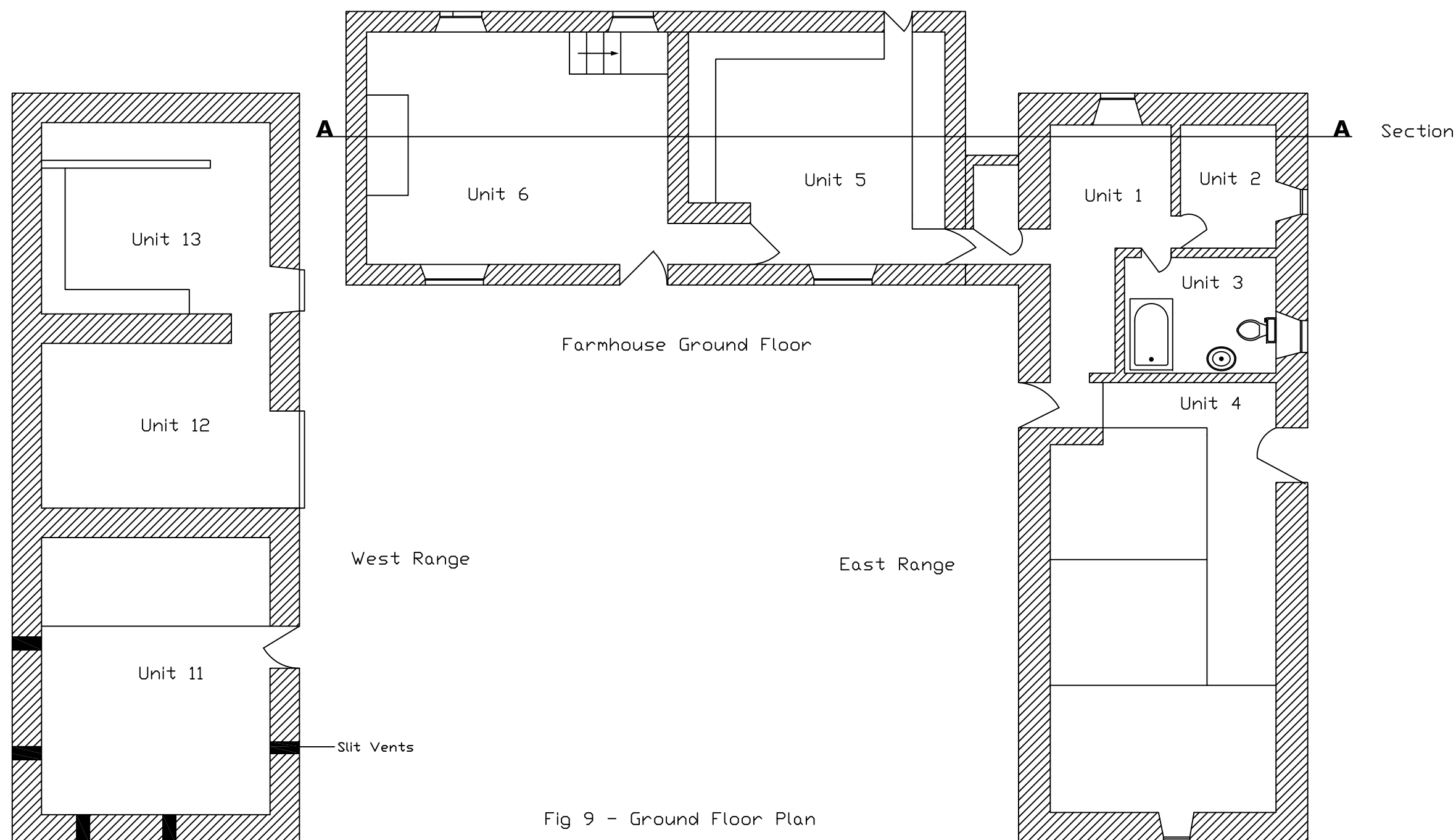





Fig 9 - Ground Floor Plan





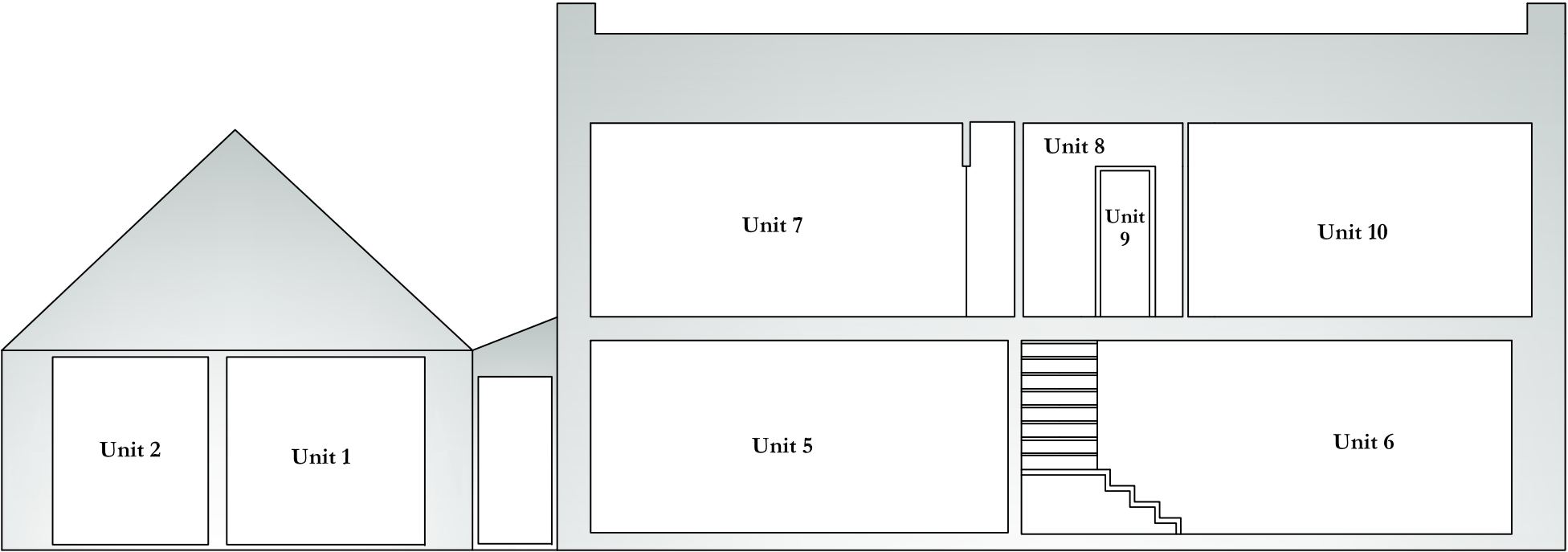
IFA-registered archaeological organisation

Key:



CFA ARCHAEOLOGY LTD
The Old Engine House
Eskmills Park
Musselburgh
East Lothian, EH21 7PQ
t: 0131 273 4380
f: 0131 273 4381
e: info@cfa-archaeology.co.uk
w: www.cfa-archaeology.co.uk

Fig. No:	10	Revision:	A
Title: Section through farmhouse & East Range			
Project: Whitelee Windfarm, High Alderstocks Farmhouse, Standing Building Survey			
Scale: 1:80 @ A3			
Client: Scottish Power			
Drawn by:	LW	Page No:	



Section A-A - position shown in Fig 9



Plate 1 - General shot of farmstead



Plate 2 -Farmhouse, south-facing elevation


Key:	Fig. No:	Revision:	A	Client:	Scottish Power	 <div>CFA ARCHAEOLOGY LTD The Old Engine House Eskmills Park Musselburgh East Lothian, EH21 7PQ t: 0131 273 4380 f: 0131 273 4381 e: info@cfa-archaeology.co.uk w: www.cfa-archaeology.co.uk</div>	
	Title: Plates 1,2						
	Project: Whitelee Windfarm - High Alderstocks Farm, Standing Building Survey						
Scale:						Drawn by: LW	Page No:



Plate 3 - Farmhouse, north-facing elevation



Plate 4 - Farmhouse, west-facing elevation


Key:	Fig. No:	Revision:	A	Client:	Scottish Power	 <div>CFA ARCHAEOLOGY LTD The Old Engine House Eskmills Park Musselburgh East Lothian, EH21 7PQ t: 0131 273 4380 f: 0131 273 4381 e: info@cfa-archaeology.co.uk w: www.cfa-archaeology.co.uk</div>	
	Title: Plates 3,4						
	Project: Whitelee Windfarm - High Alderstocks Farm, Standing Building Survey						
Scale:						Drawn by: LW	Page No:



Plate 5 - Farmhouse, east facing elevation



Plate 6 - Farmhouse interior, kitchen

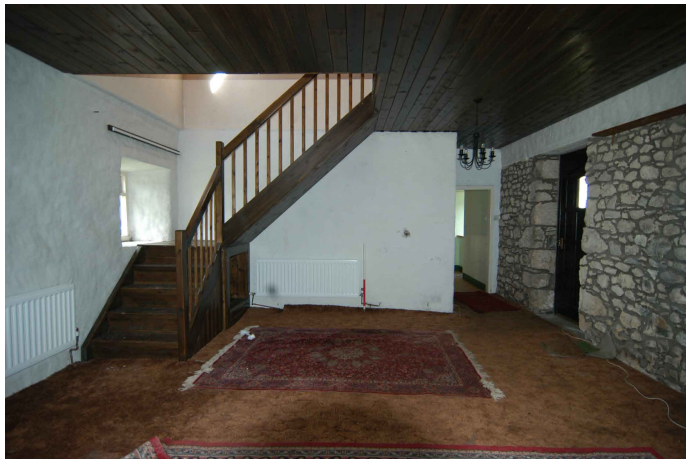


Plate 7 - Farmhouse interior, living room



Plate 9 - Farmhouse interior, bedroom 1



Plate 8 - Farmhouse interior, landing

Key:	Fig. No:	Revision:	Client:	<div><div>CFA</div><div>ARCHAEOLOGY LTD</div></div> <div>CFA ARCHAEOLOGY LTD The Old Engine House Eskmills Park Musselburgh East Lothian, EH21 7PQ t: 0131 273 4380 f: 0131 273 4381 e: info@cfa-archaeology.co.uk w: www.cfa-archaeology.co.uk</div>
	Title:	A	Scottish Power	
	Project:			
Scale:	Whitelee Windfarm - High Alderstocks Farm, Standing Building Survey			Drawn by: LW
				Page No:



Plate 10 - Farmhouse interior, box room



Plate 11 - Farmhouse interior, bedroom 2



Plate 12 - East Range, west facing elevation



Plate 13 - : East Range, south facing elevation



Plate 14 - East Range, north facing elevation

Key:	Fig. No:	Revision:	Client:	<div><div>CFA</div><div>ARCHAEOLOGY LTD</div></div> <div>CFA ARCHAEOLOGY LTD The Old Engine House Eskmills Park Musselburgh East Lothian, EH21 7PQ t: 0131 273 4380 f: 0131 273 4381 e: info@cfa-archaeology.co.uk w: www.cfa-archaeology.co.uk</div>
	Title:	A	Scottish Power	
	Project:			
Scale:	Plates 10-14			Drawn by:
	Whitelee Windfarm - High Alderstocks Farm, Standing Building Survey			LW
				Page No:



Plate 15 - East Range interior, passage



Plate 16 - East Range interior, saddle room



Plate 17 - East Range interior, stables



Plate 18 - West Range, east facing elevation



Plate 19 - : West Range, south facing elevation



Plate 20 - West Range, north facing elevation

Key:

Scale:

Fig. No:

Title:

Project:

Revision:

A

Client:

Scottish Power

Plates 15-20

Whitelee Windfarm - High Alderstocks Farm,
Standing Building Survey



CFA ARCHAEOLOGY LTD
The Old Engine House
Eskmills Park
Musselburgh
East Lothian, EH21 7PQ
t: 0131 273 4380
f: 0131 273 4381
e: info@cfa-archaeology.co.uk
w: www.cfa-archaeology.co.uk

Drawn by:

LW

Page No:



Plate 21 -
West Range interior, southern compartment



Plate 22 -
West Range interior, central compartment




Plate 23 -
West Range interior, northern compartment



Plate 24 - General shot of barns to east of steading



Plate 25 - General shot of buildings to west of steading

Key:	Fig. No:	Revision: A	Client: Scottish Power	 <div>CFA ARCHAEOLOGY LTD The Old Engine House Eskmills Park Musselburgh East Lothian, EH21 7PQ t: 0131 273 4380 f: 0131 273 4381 e: info@cfa-archaeology.co.uk w: www.cfa-archaeology.co.uk</div>	
	Title: Plates 21-25				
	Project: Whitelee Windfarm - High Alderstocks Farm, Standing Building Survey				
Scale:				Drawn by: LW	Page No:



DSC_2136.JPG



DSC_2138.JPG



DSC_2139.JPG



DSC_2140.JPG



DSC_2141.JPG



DSC_2143.JPG



DSC_2144.JPG



DSC_2145.JPG



DSC_2146.JPG



DSC_2147.JPG



DSC_2148.JPG



DSC_2149.JPG



DSC_2150.JPG



DSC_2151.JPG



DSC_2152.JPG



DSC_2153.JPG



DSC_2154.JPG



DSC_2155.JPG



DSC_2156.JPG



DSC_2157.JPG



DSC_2158.JPG



DSC_2159.JPG



DSC_2160.JPG



DSC_2161.JPG



DSC_2162.JPG



DSC_2163.JPG



DSC_2164.JPG



DSC_2165.JPG



DSC_2166.JPG



DSC_2167.JPG

Key:

Scale:

Fig. No:

Revision:

A

Client:

Scottish Power

Title:

Contact Sheet 1

Project:

Whitelee Windfarm - High Alderstocks Farm,
Standing Building Survey



CFA ARCHAEOLOGY LTD
The Old Engine House
Eskmills Park
Musselburgh
East Lothian, EH21 7PQ

t: 0131 273 4380
f: 0131 273 4381
e: info@cfa-archaeology.co.uk
w: www.cfa-archaeology.co.uk

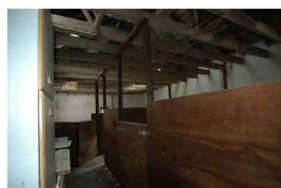
Drawn by:

LW

Page No:



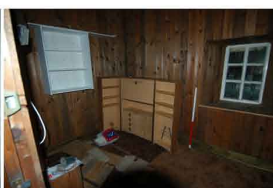
DSC_2173.JPG



DSC_2174.JPG



DSC_2176.JPG



DSC_2178.JPG



DSC_2179.JPG



DSC_2181.JPG



DSC_2182.JPG



DSC_2184.JPG



DSC_2185.JPG



DSC_2186.JPG



DSC_2187.JPG



DSC_2188.JPG



DSC_2189.JPG



DSC_2190.JPG



DSC_2191.JPG



DSC_2192.JPG



DSC_2193.JPG



DSC_2194.JPG



DSC_2195.JPG



DSC_2196.JPG



DSC_2200.JPG



DSC_2203.JPG



DSC_2206.JPG



DSC_2208.JPG



DSC_2211.JPG



DSC_2212.JPG



DSC_2213.JPG



DSC_2214.JPG



DSC_2218.JPG



DSC_2222.JPG

Key:

Scale:

Fig. No:

Revision:

A

Client:

Scottish Power

Title:

Contact Sheet 2

Project:

Whitelee Windfarm - High Alderstocks Farm,
Standing Building Survey



CFA ARCHAEOLOGY LTD
The Old Engine House
Eskmills Park
Musselburgh
East Lothian, EH21 7PQ
t: 0131 273 4380
f: 0131 273 4381
e: info@cfa-archaeology.co.uk
w: www.cfa-archaeology.co.uk

Drawn by:

LW

Page No:



DSC_2223.JPG



DSC_2228.JPG



DSC_2229.JPG



DSC_2230.JPG



DSC_2231.JPG



DSC_2232.JPG



DSC_2233.JPG



DSC_2234.JPG



DSC_2235.JPG



DSC_2236.JPG



DSC_2237.JPG



DSC_2238.JPG



DSC_2239.JPG



DSC_2240.JPG



DSC_2241.JPG



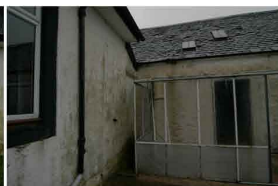
DSC_2242.JPG



DSC_2243.JPG



DSC_2244.JPG



DSC_2245.JPG



DSC_2246.JPG



DSC_2247.JPG



DSC_2248.JPG



DSC_2249.JPG



DSC_2250.JPG



DSC_2251.JPG



DSC_2252.JPG



DSC_2253.JPG



DSC_2254.JPG



DSC_2255.JPG



DSC_2256.JPG

Key:

Scale:

Fig. No:

Title:

Contact Sheet 3

Project:

Whitelee Windfarm - High Alderstocks Farm,
Standing Building Survey

Revision:

A

Client:

Scottish Power



CFA ARCHAEOLOGY LTD
The Old Engine House
Eskmills Park
Musselburgh
East Lothian, EH21 7PQ

t: 0131 273 4380
f: 0131 273 4381
e: info@cfa-archaeology.co.uk
w: www.cfa-archaeology.co.uk

Drawn by:

LW

Page No:



DSC_2257.JPG



DSC_2258.JPG



DSC_2259.JPG



DSC_2260.JPG



DSC_2261.JPG



DSC_2262.JPG



DSC_2263.JPG



DSC_2264.JPG



DSC_2265.JPG



DSC_2266.JPG



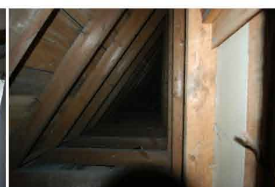
DSC_2267.JPG



DSC_2268.JPG



DSC_2269.JPG



DSC_2271.JPG



DSCN0152.JPG



DSCN0155.JPG



DSCN0157.JPG



DSCN0165.JPG



DSCN0185.JPG



DSCN0188.JPG



DSCN0192.JPG



DSCN0193.JPG



DSCN0197.JPG



IMG_0096.jpg



DSC_2138.JPG



DSC_2141.JPG



DSC_2145.JPG



DSC_2148.JPG



DSC_2149.JPG



DSC_2151.JPG

Key:

Scale:

Fig. No:

Revision:

A

Client:

Scottish Power

Title:

Contact Sheet 4

Project:

Whitelee Windfarm - High Alderstocks Farm,
Standing Building Survey



CFA ARCHAEOLOGY LTD
The Old Engine House
Eskmills Park
Musselburgh
East Lothian, EH21 7PQ
t: 0131 273 4380
f: 0131 273 4381
e: info@cfa-archaeology.co.uk
w: www.cfa-archaeology.co.uk

Drawn by:

LW

Page No:



DSC_2152.JPG

DSC_2153.JPG

DSC_2154.JPG

DSC_2155.JPG

DSC_2156.JPG



DSC_2159.JPG

DSC_2167.JPG

DSC_2174.JPG

DSC_2179.JPG

DSC_2181.JPG



DSC_2189.JPG

DSC_2195.JPG

DSC_2200.JPG

DSC_2208.JPG

DSC_2214.JPG



DSC_2218.JPG



DSC_2232.JPG

DSC_2234.JPG

DSC_2235.JPG

Key:

Scale:

Fig. No:

Revision:

A

Client:

Scottish Power

Title:

Contact Sheet 5

Project:

Whitelee Windfarm - High Alderstocks Farm,
Standing Building Survey



CFA ARCHAEOLOGY LTD
The Old Engine House
Eskmills Park
Musselburgh
East Lothian, EH21 7PQ

t: 0131 273 4380
f: 0131 273 4381
e: info@cfa-archaeology.co.uk
w: www.cfa-archaeology.co.uk

Drawn by:

LW

Page No: