

# CFA Archaeology Ltd

*archaeological consultants*

*Advice on Archaeology & Planning*

*Environmental Impact Assessment*

*Interpretation, Design & Display*

*Finds/ Environmental Analysis*

*Field Evaluation & Excavation*


*Historic Building Recording*


*Site & Landscape Survey*

*Geophysical Survey*

**Crystal Rig 3 Wind Farm, Lammermuir Hills,  
East Lothian**

**Cultural Heritage Assessment**

 0131 273 4380

 0131 273 4381

 [info@cfa-archaeology.co.uk](mailto:info@cfa-archaeology.co.uk)

 [www.cfa-archaeology.co.uk](http://www.cfa-archaeology.co.uk)

## **CFA ARCHAEOLOGY LTD**

The Old Engine House  
Eskmills Business Park  
Musselburgh  
East Lothian  
EH21 7PQ

Tel: 0131 273 4380

Fax: 0131 273 4381

email: [info@cfa-archaeology.co.uk](mailto:info@cfa-archaeology.co.uk)

web: [www.cfa-archaeology.co.uk](http://www.cfa-archaeology.co.uk)

Author	Samantha Hickman MA FSA Scot ACIfA
Illustrator	Shelly Werner BA MPhil PhD MCIfA
Approver	Tim Neighbour BSc FSA Scot MCIfA
Commissioned by	Natural Power
Date issued	July 2015
OASIS Reference	cfaarcha1-86825
Grid Ref	NT 666 702

This document has been prepared in accordance with CFA Archaeology Ltd  
standard operating procedures.

**Crystal Rig 3 Wind Farm, Lammermuir Hills,  
East Lothian**

**Cultural Heritage Assessment**

# Section 11

## **Cultural Heritage**

### CONTENTS

<b>11.1 INTRODUCTION</b> .....	<b>3</b>
<b>11.2 PLANNING AND LEGISLATION</b> .....	<b>3</b>
<b>Sites with Statutory Designations</b> .....	<b>4</b>
<i>Scheduled Monuments</i> .....	<i>4</i>
<i>Listed Buildings</i> .....	<i>4</i>
<i>Conservation Areas</i> .....	<i>4</i>
<b>Sites with Non-Statutory Designations</b> .....	<b>4</b>
<i>Inventory Status Gardens and Designed Landscapes (GDL)</i> .....	<i>4</i>
<i>Inventory Status Historic Battlefields</i> .....	<i>4</i>
<i>Archaeology and Other Historic Environment Interests</i> .....	<i>4</i>
<b>Regional and Local Planning Guidance</b> .....	<b>5</b>
<i>Edinburgh and the Lothian's Structure Plan 2015</i> .....	<i>5</i>
<i>The East Lothian Local Plan 2008</i> .....	<i>5</i>
<b>11.3 METHODOLOGY</b> .....	<b>5</b>
<b>Data Collection</b> .....	<b>5</b>
<b>Reconnaissance Field Survey</b> .....	<b>6</b>
<b>Consultation</b> .....	<b>6</b>
<b>Assessing Significance</b> .....	<b>7</b>
<b>Assessment of Physical Effects</b> .....	<b>8</b>
<b>National / International</b> .....	<b>8</b>
<b>Regional</b> .....	<b>8</b>
<b>Assessment of Impacts on Setting</b> .....	<b>8</b>
<b>Criteria for Assessing Sensitivity of Setting</b> .....	<b>9</b>
<b>Identification of Magnitude of Impact on Setting</b> .....	<b>9</b>
<b>Assessment of Impact Significance</b> .....	<b>9</b>
<b>Significance Criteria</b> .....	<b>10</b>
<b>11.4 BASELINE CONDITIONS</b> .....	<b>10</b>
<b>Cultural Heritage Sites within the Survey Area</b> .....	<b>10</b>
<b>Character of Cultural Heritage within the Survey Area</b> .....	<b>10</b>
<i>Cairns</i> .....	<i>10</i>
<i>Medieval or Later Farmsteads, Agrarian and Settlement Features</i> .....	<i>10</i>
<i>Trackways and Marker Stones</i> .....	<i>11</i>

<i>Miscellaneous</i> .....	11
<b>Assessment of the archaeological potential of the area</b> .....	<b>11</b>
<b>11.5 IMPACT ASSESSMENT</b> .....	<b>11</b>
<b>Direct (Construction) Effects</b> .....	<b>11</b>
<i>Predicted Effects</i> .....	11
<i>Proposed Mitigation</i> .....	12
<i>Residual Effects</i> .....	12
<b>Indirect (Operational) Effects</b> .....	<b>12</b>
<i>Predicted Effects</i> .....	12
<i>Proposed Mitigation</i> .....	13
<i>Residual Effects</i> .....	13
<b>11.6 CUMULATIVE EFFECT ASSESSMENT</b> .....	<b>13</b>
<b>11.7 SUMMARY</b> .....	<b>13</b>

## FIGURES

**Figure 11.1:** Cultural Heritage Constraints

**Figure 11.2:** Cultural Heritage External Receptors and ZTV

**Figure 11.3:** Cultural Heritage External Receptors and Cumulative Wind Energy Schemes

## 11.1 INTRODUCTION

- 11.1.1 This section assesses the archaeological impact assessment undertaken by CFA Archaeology at the proposed Phase III of the Crystal Rig Wind Farm resulting from the construction, operation and ultimate decommissioning of the proposed turbines and infrastructure. A field visit and detailed assessment has been undertaken to identify areas with archaeological interest which allows for the assessment to identify areas which should be avoided for the proposed construction of turbines and access roads and any mitigation required from the proposed development. This has been an iterative process and is described in Section 4 of this ES.
- 11.1.2 The proposed wind farm is situated around Ward Law, Dunbar Common and Bransley Hill, on land currently used as rough grazing. The proposed development comprises eleven wind turbines of an overall height from base to tip not exceeding 125 metres, site tracks, foundations, underground electricity cables, borrow pits anemometry mast and a temporary construction and storage compound.
- 11.1.3 The objectives of this study were to:
- Identify the cultural heritage baseline;
  - Consider the proposed development site in terms of its archaeological and historic environment potential;
  - Assess the effects of the construction and operation of the proposals on the baseline cultural heritage resource, within the context of relevant legislation and planning policy; and
  - Propose measures, where appropriate, to mitigate any predicted significant adverse effects, and taking this into account, assess any residual effects.
- 11.1.4 Figure 11.1 located at the end of this section, depicts the study area and the locations of archaeological sites and monuments within the study area which were identified by the cultural heritage study. A gazetteer of these sites is provided in Appendix 11.1 located in Volume 3 of this ES.
- 11.1.5 Figure 11.2 located at the end of this section, depicts the development within its wider landscape setting. It shows key cultural heritage receptors, within a 10 km radius, which would have intervisibility with the proposed turbines. A gazetteer of these sites is provided in Appendix 11.2 located in Volume 3 of this ES.
- 11.1.6 A field visit was carried out to evaluate the current condition of those sites recorded by desk based assessment and which had not been visited during previous surveys. Reference was also made to the ES's and assessments carried out for the previous development at Crystal Rig.

## 11.2 PLANNING AND LEGISLATION

- 11.2.1 Scotland's historic environment contributes to the Scottish Government's strategic objectives and to the target of improving the state of Scotland's historic buildings, monuments and environment which is identified as a national indicator and target under the National Performance Framework. The Scottish Historic Environment Policy (SHEP)<sup>1</sup> sets out Scottish Minister's policies for the historic environment, and provides policy direction for Historic Scotland and a framework that informs the day-to-day work of a range of organisations that have a role and interest in managing Scotland's historic environment. Through the implementation of the SHEP, Scottish Ministers wish to achieve three outcomes for Scotland's historic environment:
- a) That the historic environment is cared for, protected, and enhanced for the benefit of our own and future generations.
  - b) To secure greater economic benefits from the historic environment.
  - c) That the people of Scotland and visitors to our country value, understand and enjoy the historic environment.
- 11.2.2 Scottish Planning Policy<sup>2</sup> requires that planning authorities ensure that development plans provide a framework for the protection, conservation and enhancement of the historic environment to allow the assessment of the impact of proposed development on the historic environment (para 112). The Planning Advice Note (PAN 2/2011): Planning and Archaeology<sup>3</sup> advises that, in determining planning applications, planning authorities should take into account the relative importance of archaeological sites (para 5). It also notes that in determining planning applications that may impact on archaeological features or their setting, planning authorities may on occasion have to balance the benefits of development against the importance of archaeological features (para 6). The desirability of preserving a monument (whether scheduled or not) is a material consideration and the objective should be to assure the protection and enhancement of monuments by preservation in situ, in an appropriate setting. When preservation in situ is not possible, recording and / or excavation followed by analysis and publication of the results may be an acceptable alternative (para 14).
- 11.2.3 Sites with statutory designations include:
- Scheduled Monuments.
  - Listed Buildings.
  - Conservation Areas.

<sup>1</sup> Scottish Historic Environment Policy. Historic Scotland (December 2011)

<sup>2</sup> Scottish Planning Policy. The Scottish Government (February 2010)

<sup>3</sup> Planning Advice Note 2 (PAN2/2011): Planning and Archaeology. The Scottish Government (July 2011)

- Designated Wrecks.

11.2.4 Sites with non-statutory designations include:

- World Heritage Sites.
- Gardens and Designed Landscapes.
- Historic Battlefields
- Archaeology and Other Historic Environment Interests.

11.2.5 Those relevant to this assessment are Scheduled Monuments, Listed Buildings, Conservation Areas, Gardens and Designed Landscapes (GDL), Historic Battlefields, and archaeology and other historic environment interests.

## Sites with Statutory Designations

### Scheduled Monuments

11.2.6 Under the Ancient Monuments and Archaeological Areas Act 1979 (1979 Act), the Scottish Ministers are required to compile and maintain a schedule of monuments considered to be of importance. The consent of the Scottish Ministers is required before any works are carried out which would have the effect of demolishing, destroying, damaging, removing, repairing, altering, adding to, flooding or covering up a Scheduled Monument. In addition, impacts of proposed development works upon the setting of a Scheduled Monument form an important consideration in the granting or refusal of planning consent to conduct development works. Further information on development control procedures relating to Scheduled Monuments is provided in the SHEP, SPP and in Planning Advice Note PAN2/2011 Planning and Archaeology.

### Listed Buildings

11.2.7 Under the Planning (Listed Buildings and Conservation Areas) (Scotland) Act 1997 (1997 Act), the Scottish Ministers are required to compile a list of buildings of special architectural or historic interest. Such buildings are classified into Categories A, B and C(s), in decreasing order of importance. Planning authorities and the Scottish Ministers are required to have special regard for the desirability of preserving Listed Buildings and their settings and any features of special architectural or historic importance they possess. Scottish Government policy and guidance is also provided in SHEP and SPP.

### Conservation Areas

11.2.8 Under the Planning (Listed Buildings and Conservation Areas) Scotland Act (1997 Act), areas of special architectural or historic interest can be designated by local authorities as Conservation Areas, the character or appearance of which it is desirable to preserve or enhance. Planning authorities are required to consider planning applications affecting the appearance, character or setting of Conservation Areas. Scottish Government policy and guidance is also provided in SHEP and SPP.

## Sites with Non-Statutory Designations

### Inventory Status Gardens and Designed Landscapes (GDL)

11.2.9 The impact of a development on a designated Garden or Designed Landscape listed in 'An Inventory of Gardens and Designed Landscapes in Scotland or its Supplements' (published by Historic Scotland) is a material consideration in the determination of a planning application, although the designation is non-statutory in effect. Under the provisions of the Town and Country Planning (General Development Procedure) (Scotland) Order 1992 (1992 Order), planning authorities must consult Historic Scotland on any development that may affect a site contained in the Inventory. Scottish Government policy and guidance is also provided in SHEP and SPP.

### Inventory Status Historic Battlefields

11.2.10 In the past, attempts to protect parts of battlefields have used existing measures including scheduling or listing of physical features; designation as a conservation area or landscape designations. A new policy on Historic Battlefields was set out in the revised SHEP in July 2009. The new policy seeks to introduce additional measures to protect Historic Battlefields, through the production by Historic Scotland of an Inventory of Historic Battlefields, which will identify nationally important sites, and provide information to help in their understanding, protection and sustainable management through the Scottish planning system and in other relevant contexts, such as landscape and land-use management. Although there are no new legal restrictions on the areas defined as Inventory status Historic Battlefields, local planning authorities are required to give particular consideration to Inventory status Historic Battlefields when preparing development plans and considering development proposals for their areas. In addition, local development plans and, where appropriate, supplementary planning guidance, should set out policies and criteria that will apply to the protection, conservation and management of historic battlefields.

### Archaeology and Other Historic Environment Interests

11.2.11 Archaeological sites and monuments without statutory protection are curated by the local planning authority. Scottish Planning Policy (SPP) (2010) and PAN 2/2011 provide national planning policy guidance and advice on the treatment of this resource.

## Regional and Local Planning Guidance

### Edinburgh and the Lothian's Structure Plan 2015

11.2.12 Structure Plan Policy ENV 1C states that development which would harm the character, appearance and setting of the following designated built or cultural heritage sites, and / or the specific features which justify their designation, should be resisted.

- World Heritage Sites
- Listed Buildings
- Scheduled Ancient Monuments
- Royal Parks
- Sites listed in the Inventory of Gardens and Designed Landscapes

Local plans should include policies, and where appropriate proposals for their protection and enhancement.

11.2.13 Structure Plan Policy ENV 1D states that development affecting the following regional or local areas of built environmental interest, such as Conservation Areas, and Sites of Archaeological Interest or their settings, will only be permitted where it can be demonstrated that:

- a) The objectives and overall integrity of the designated area will not be compromised; or
- b) The social or economic benefits to be gained from the proposed development outweigh the conservation or other interest of the site.

11.2.14 Structure Plan Policy ENV 6: Renewable Energy states that the development of renewable energy resources will be supported where this can be achieved in an environmentally acceptable manner. Local plans should set out the specific criteria against which renewable energy developments will be assessed, including cumulative impact. They should also consider whether it is appropriate to define broad areas of search, or specific sites, suitable for wind or other renewable energy developments.

### The East Lothian Local Plan 2008

11.2.15 Policy ENV3 states that new development that harms the setting of a Listed Building will not be permitted.

11.2.16 Policy ENV7 of the East Lothian Local Plan states that:

- a) Where a proposed development might affect any site or area included in the East Lothian Sites and Monuments Register (of known or suspected archaeological interest), the developer must first undertake and make available to the Planning Authority a professional archaeological assessment and, if necessary, a field evaluation.
- b) Development that would harm a site of archaeological interest or its setting, particularly a Scheduled Monument, will not be permitted. The only exception to this will be situations where archaeological advice concludes that the significance of the remains is not sufficient to justify their physical preservation in situ when weighed against other material considerations, including the benefits of the proposed development. In such situations, the developer must make proper provision for the excavation, recording, and analysis of the archaeological remains in advance of the development and the publication of the results. Appropriate conditions may be applied to any planning permission to achieve this.
- c) Where it is feasible within a proposed development to accommodate and preserve archaeological features, public access to and interpretation of these features will be encouraged.

11.2.17 Policy ENV8 states that development that would harm the conservation objectives of areas included within "The Inventory of Gardens and Designed Landscapes" will not be permitted.

## 11.3 METHODOLOGY

### Data Collection

11.3.1 All work was conducted in accordance with the Institute for Archaeologists (IfA) Code of Conduct<sup>4</sup> and Standard and Guidance for Archaeological Desk-based Assessment<sup>5</sup>.

11.3.2 Up-to-date information was obtained from appropriate sources on the locations and extents of cultural heritage sites with statutory protection and non-statutory designations in the vicinity of the proposed wind farm area as described below.

11.3.3 Details of the locations and extents of Scheduled Monuments, Listed Buildings, Gardens and Designed Landscapes, Conservation Areas and Historic Battlefields in GIS, were downloaded from Historic Scotland's Spatial Warehouse Database<sup>6</sup>. Additional information was provided on known archaeological

<sup>4</sup> By-Laws: Code of Conduct. Institute for Archaeologists (April 2010)

<sup>5</sup> Standard and guidance for archaeological desk-based assessment. Institute for Archaeologists (November 2011).

<sup>6</sup> Data Services. Historic Scotland. (2012) Available online from: <http://data.historic-scotland.gov.uk/pls/htmlldb/f?p=2000:10:0> (last accessed 13/02/2012)

sites and monuments within the proposed development area from the East Lothian Historic Environment Record (HER).

- 11.3.4 Information on the character and condition of known archaeological sites and features within the proposed development area was obtained from the National Monuments Record of Scotland (NMRS) via the online Past Map resource, maintained by the Royal Commission on the Ancient and Historic Monuments of Scotland (RCAHMS) and Historic Scotland. The East Lothian Council Heritage Officer provided information on sites held in the East Lothian Historic Environment Record (HER).
- 11.3.5 An assessment was made of vertical aerial photographic coverage of the proposed development area held by the Royal Commission on the Ancient and Historical Monuments of Scotland (RCAHMS). Sorties from 1946 to 1989 were available for examination.
- 11.3.6 Ordnance Survey maps and other historical maps held by the Map Library of the National Library of Scotland were examined, to provide information on sites of potential archaeological significance and land use development.
- 11.3.7 Bibliographic references were consulted to provide background and historical information.
- 11.3.8 The online Historic Land-Use Assessment Map (HLA Map) for Scotland<sup>7</sup>, maintained by the RCAHMS was consulted for information on the historic land use character of the proposed development area.
- 11.3.9 The Scottish Palaeoenvironmental Database (SPAD) which records the distribution of known palaeoenvironmental sites across Scotland was consulted for information on data within or adjacent to the proposed wind farm area. It provided no relevant information specific to the proposed wind farm area.

### Reconnaissance Field Survey

- 11.3.10 A reconnaissance field survey (equating to a RCAHMS Level 1 survey) was undertaken of the proposed development site. The aims of the field survey were to:
- Assess the baseline condition of the known archaeology and heritage features, previously identified through the desk-based assessment;
  - Identify any further features of cultural heritage interest not detected from the desk-based assessment and identify area with the potential to contain currently unrecorded, buried archaeological remains;

- Identify areas with the potential to contain unrecorded, buried archaeological remains, taking into account factors such as topography, geomorphology and ground conditions; and
- Assess the potential impacts of the construction of the proposed wind farm on cultural heritage sites and areas, and their settings, where appropriate.

11.3.11 Identified sites were recorded on pro-forma monument recording forms and by digital photography and their positions (and where appropriate their extents) were logged using GPS equipment. These archive materials will be offered to East Lothian HER. No intrusive archaeological interventions have been carried out as part of this assessment.

### Consultation

11.3.12 A scoping request was issued to Energy Consents Development Unit (ECDU) in July 2010 and distributed directly to all consultees including Historic Scotland, East Lothian Council and Scottish Borders Council. Consultation letters inviting comment upon the proposed Phase II of the Crystal Rig Wind Farm development were sent to Historic Scotland, East Lothian Archaeology Service, and a Scottish Borders Council Archaeology Officer on 6th October 2010. These letters were followed up with phone calls and the responses are summarised in Table 11.1 below.

**Table 11.1: Summary of consultation responses**

Consultee	Issues raised	Response
Historic Scotland Scoping Opinion (05/08/2010)	Confirmed that there are no Scheduled Monuments, Category A Listed Buildings or Gardens or Designed Landscapes within the search area. Noted that there are a large number of these sites within the vicinity of the proposed development which may receive an indirect impact as the result of the new development, or in combination with the consented turbines. Noted particular concern that the proposed development which would expand the area of turbines to the north may cause indirect impacts upon cultural heritage sites to the north and east.	The potential for indirect impacts is discussed in paragraphs 11.5.13 – 11.5.20
East Lothian Council (telephone conversation; 13/10/2010)	Noted that there are several small areas of rig and furrow within the proposed development area. These should be preserved in situ if possible. Noted particular concern areas of rig and furrow around Boonslie farmstead which may be of an early date.	The potential for direct impacts and mitigation to minimise these impacts is discussed in paragraphs 11.5.1 – 11.5.12

<sup>7</sup> Historic Landuse Assessment map. RCAHMS. (2012). Available online from <http://hla.rcahms.gov.uk> (last accessed 13/02/2012)



Consultee	Issues raised	Response
East Lothian Council (letter received 15/10/2010)	<p>Highlighted the potential for direct impacts upon the late medieval farmstead and its associated landscape at Boonslie. It is expected that there should be no direct impacts upon this site.</p> <p>Highlighted the potential for direct impacts upon the Herring road. Stated that any impacts should be kept to a minimum and that mitigation will be required for any impacts.</p> <p>Highlighted the potential for direct impacts upon the site of an Aircraft Crash site, debris of which may be widely spread and can only be excavated or removed under MoD licence. It is expected that elements of the crash site should not be impacted by the development.</p> <p>Highlighted the potential for direct impacts upon peat deposits. It is expected that a palaeoenvironmental assessment of the proposed development area would be undertaken and any areas of peat to be impacted would be assessed.</p> <p>Stated that a systematic walkover survey of the proposed development area should be undertaken.</p> <p>Stated that indirect impacts of the development upon the Historic Environment should include both designated and undesignated cultural heritage assets within 5 km of the proposed site as well as significant indirect impacts which lie outwith this area e.g. Traprain Law.</p> <p>Stated that the known remains in the area suggest that there is a good potential for prehistoric, medieval and post-medieval remains to be present within the development area.</p> <p>Broad acceptance of proposed approach to archaeological assessment, with guidance on the walk-over survey methodology provided.</p>	<p>The potential for direct impacts and mitigation to minimise these impacts is discussed in Paragraphs 11.5.1 – 11.5.12</p> <p>A walkover survey has been carried out and the results are outlined in Appendix 11.1.</p> <p>The potential for indirect impacts is discussed in paragraphs 11.5.13 –11.5.20. Sites within 10 km of the Development are considered.</p> <p>The potential for previously unrecorded archaeological remains within the development area is considered in paragraphs 11.4.16</p>

Consultee	Issues raised	Response
East Lothian Council Archaeological Service (site meeting 18/10/2012)	<p>Stated that Boonslie is a candidate for scheduled monument status, and that Historic Scotland are considering this in advance of the new local development plan being prepared. The site should therefore be considered as being of schedulable quality, and the effect upon its setting should be considered.</p> <p>With regard to mitigation requirements for Site 27 (which would be directly impacted by the proposed construction compound), stated that:</p> <ul style="list-style-type: none"> <li>The construction compound should avoid major remains (i.e. the banks and enclosure remains)</li> <li>A series of sample trenches will be required to date the area of rig and how it fits within the wider farmstead landscape sequence in the area</li> <li>Sample trenches should target key locations such as the headlands of the rig. It should also be noted that the rig may be disguising earlier buried remains, or multiple phases of cultivation.</li> <li><a href="#">Results from the trial trenching investigation would be required pre-determination.</a></li> </ul>	<p>Cultural Heritage sites within a 10km radius of the development are shown in Appendix 11.2 and the indirect effects considered in paragraphs 11.5.13- 11.5.20.</p> <p>Mitigation proposals for Site 27 are set out in Paragraphs 11.5.5 – 11.5.12.</p>
Scottish Borders Council (letter received 02/11/2010)	<p>Stated that they do not feel that the proposed development will cause any significant impacts upon designated sites and monuments within the Scottish Borders Council area. The existing Crystal Rig wind farm would lie between any sites which may receive impacts and the proposed Crystal Rig III development. Recommend East Lothian Council Archaeology Service is main point of contact.</p>	

### Assessing Significance

11.3.13 The impacts of the proposed development on cultural heritage assets are assessed on the basis of their type (direct, secondary, indirect, cumulative), nature (beneficial, neutral or adverse), and longevity (reversible, short-term or long-term; irreversible, permanent). The assessment takes into account the importance of the receptor and the magnitude of impact. Mitigation measures designed to prevent, reduce or offset significant adverse effects are proposed, and residual effects are assessed taking into account the likely effectiveness of the mitigation proposed.

11.3.14 The assessment of importance of archaeological and heritage assets reflects the relative weight which statute and policy attach to them, principally as published in Scottish Planning Policy (SPP) and Scottish

Historic Environment Policy (SHEP July 2009). Table 11.2 summarises the relative importance of key cultural heritage resources.

**Table 11.2: Sensitivity of cultural heritage assets**

Importance	Definition / Criteria
<b>National / International</b>	Sites of national and international importance, including: <ul style="list-style-type: none"> <li>• World Heritage Sites</li> <li>• Scheduled Monuments and sites proposed for scheduling</li> <li>• Undesignated archaeological sites and areas of likely national importance identified in HERs / SMRs</li> <li>• Category A Listed Buildings</li> <li>• Gardens and Designed Landscapes (Inventory sites)</li> <li>• Outstanding Conservation Areas</li> <li>• Historic Battlefields (Inventory sites)</li> </ul>
<b>Regional</b>	Sites of regional importance, including: <ul style="list-style-type: none"> <li>• Archaeological sites and areas of distinctive regional importance</li> <li>• Archaeologically Sensitive Areas</li> <li>• Category B Listed Buildings</li> <li>• Conservation Areas</li> </ul>
<b>Local</b>	Sites of local importance, including: <ul style="list-style-type: none"> <li>• Archaeological sites of local importance</li> <li>• Category C Listed Buildings</li> <li>• Unlisted historic buildings and townscapes with local (vernacular) characteristics</li> </ul>
<b>Lesser</b>	Sites of little or no importance, including: <ul style="list-style-type: none"> <li>• Sites of former archaeological features</li> <li>• Unlisted buildings of minor historic or architectural interest</li> <li>• Poorly preserved examples of particular types of features</li> </ul>

### Assessment of Physical Effects

11.3.15 Criteria for assessing the magnitude of a direct physical impact, which measures the degree of change to the baseline condition of a feature that would result from the construction of one or more element of the proposed wind farm, are presented in Table 11.3. The methodology is consistent with that introduced in Section 3 of this ES.

**Table 11.3: Magnitude of physical impacts**

Magnitude of Impact	Description
<b>High</b>	A fundamental change to the baseline condition of the receptor, leading to total or major alteration of character.
<b>Medium</b>	A material, partial alteration of character.
<b>Low</b>	Slight detectable alteration of the baseline condition of the receptor.
<b>Imperceptible/ Negligible</b>	A barely distinguishable change from baseline conditions.

11.3.16 The importance of the receptor and the magnitude of the predicted impact are then used to inform the professional judgement of the likely significance of the physical impact. Table 11.4 summarises the criteria for assigning significance of a physical impact, in line with the Electricity Works (Environmental Impact Assessment) (Scotland) Regulations 2000. Major and moderate impacts are considered to be significant in the context of the EIA regulations. Where a physical impact on a feature is likely, the assessment will contain a summary statement of the 'cultural significance' of that feature (following the guidance defined in Annex 1 of SHEP).

**Table 11.4: Significance of physical impacts**

Magnitude	Importance			
	<i>National / International</i>	<i>Regional</i>	<i>Local</i>	<i>Lesser</i>
<b>High</b>	Major	Major	Moderate	Minor
<b>Medium</b>	Major	Moderate	Minor	Negligible
<b>Low</b>	Moderate	Minor	Negligible	Negligible
<b>Negligible</b>	Minor	Negligible	Negligible	Negligible

### Assessment of Impacts on Setting

11.3.17 For each asset where a potential effect on setting has been identified, the assessment of possible effects adopts a four-stage approach:

- Identification of the characteristics of the setting of the receptor (see above);
- Assessment of the sensitivity of that setting;
- Identification of how the presence of the development would affect that setting (magnitude of effect); and
- Assessment of significance of effect.

## Criteria for Assessing Sensitivity of Setting

11.3.18 Sensitivity of setting has been assessed by considering two factors:

- The relative weight which statute and policy attach to the receptor and its setting,
- The degree to which the baseline setting contributes to the understanding and / or appreciation, and hence value, of the receptor.

11.3.19 The relative weight that statute and policy attach to the receptor and its setting is determined using the sensitivity of archaeological and heritage resources set out in Table 11.2. Where a receptor has more than one designation (for example a Listed Building that is also a Scheduled Monument), the value / sensitivity of the receptor is stated as the higher of the two designations.

11.3.20 The degree to which the baseline setting contributes to the understanding and / or appreciation of the asset has been assessed according to the criteria set out in Table 11.5.

**Table 11.5: Contribution of setting to understanding and appreciation of a cultural heritage receptor**

Contribution	Definition
<b>High</b>	A setting which makes a strong positive contribution to the understanding and/or appreciation of the siting and/or historical/archaeological/architectural context of a receptor. E.g. a prominent topographic location; surroundings that include related monuments in close association; surroundings that are believed to be little changed from those when the receptor was created.
<b>Moderate</b>	A setting which makes some positive contribution to the understanding and/or appreciation of the siting and/or historical/archaeological/architectural context of a receptor. E.g. surroundings that complement the siting and appearance of a receptor, such as the presence of a feature of the rural past within a more recent farming landscape containing little or no urban or industrial development.
<b>Low</b>	A setting which makes little positive contribution to the understanding and/or appreciation of the siting and/or historical/archaeological/architectural context of a receptor. E.g. where surroundings only partially complement the siting and appearance of a receptor, such as the presence of a feature of the rural past within a partly urbanised or industrialised landscape.
<b>Negligible</b>	A setting which does not contribute positively to the understanding and/or appreciation of the siting and/or historical/archaeological/architectural context of a receptor. E.g. immediate surroundings of a commercial coniferous single species woodland or industrial development that are not relevant to understanding the context of the receptor.

11.3.21 These two criteria (value / sensitivity of the asset and contribution of setting) are combined to assess the overall sensitivity of a setting, as set out in Table 11.6.

**Table 11.6: Sensitivity of setting of an asset**

Sensitivity of Asset	Contribution of Setting			
	<i>High</i>	<i>Moderate</i>	<i>Low</i>	<i>Negligible</i>
<i>High</i>	High	High	Medium	Low
<i>Medium</i>	High	Medium	Low	Low
<i>Low</i>	Medium	Low	Low	Low

## Identification of Magnitude of Impact on Setting

11.3.22 Where it is established that the setting of an asset is such that there is no potential for it to be affected by the presence of the development, the receptor is not considered further in the assessment. For the remaining sites, the magnitude of effect on setting has been assessed according to the thresholds in Table 11.7.

**Table 11.7: Magnitude of impacts on setting**

Level of magnitude	Definition
<b>High</b>	Fundamental impacts obviously changing the surroundings of an asset, such that its baseline setting is substantially or totally altered.
<b>Medium</b>	Impacts discernibly changing the surroundings of an asset, such that its baseline setting is partly altered.
<b>Low</b>	Slight, but detectable impacts that do not alter the baseline setting of the asset materially.
<b>Imperceptible/ Negligible</b>	A very slight and barely distinguishable change from baseline conditions.

## Assessment of Impact Significance

11.3.23 The significance of an impact on setting depends on both the magnitude of the impact and the sensitivity of the setting of the asset. Table 11.8 presents a matrix that has been used to inform the assessment in combination with professional judgement.

**Table 11.8: Significance of impacts on setting**

Magnitude	Sensitivity of setting		
	High	Medium	Low
High	Major	Major	Minor
Medium	Major	Moderate	Minor
Low	Minor <sup>8</sup>	Minor	None
Imperceptible	Negligible	Negligible	Negligible

### Significance Criteria

11.3.24 The significance of impacts is classified as major, moderate, minor or negligible, as defined in Table 11.9. Major and moderate impacts are considered significant in accordance with the Electricity Works (Environmental Impact Assessment) (Scotland) Amendment Regulations 2008.

**Table 11.9: Significance criteria**

Significance of Effect	Definition
Major	A change to the fabric or setting that leads to a substantial effect on the character, quality or context of a receptor.
Moderate	Changes to the fabric or setting that lead to a material effect on the character, quality or context of a receptor.
Minor	Changes to the fabric or setting that lead to a detectable but non-material change or effect on the character, quality or context of a receptor.
Negligible	Changes to the fabric or setting that lead to, at most, a negligible effect on the character, quality or context of a receptor.

## 11.4 BASELINE CONDITIONS

### Cultural Heritage Sites within the Survey Area

11.4.1 Thirty-four cultural heritage sites were identified within the study area. They range in date from prehistory, through the medieval period, into 20th century. They are discussed thematically below. No Scheduled Monuments or Listed Buildings lie within the survey area, and no part of the survey area lie within a Conservation Area or Garden and Designed Landscape. One of the recorded sites was noted by East Lothian Council to be a candidate site for scheduling.

<sup>8</sup> A non-material change to baseline conditions cannot by its nature lead to a significant effect. A significant effect arises from a material change to baseline conditions. This distinction explains why this particular significance assessment finding is not 'moderate'.

11.4.2 Numbers in parentheses in the following sections refer to site numbers annotated on Figure 11.1 (at the end of this section) and detailed in Appendix 11.1 (Volume 3 of this ES).

### Character of Cultural Heritage within the Survey Area

#### Cairns

11.4.3 Two cairns (5 & 13) have been recorded within the proposed development area. It is possible that these sites are of prehistoric date and are examples of prehistoric burial cairns. However, field survey noted that the two cairns appeared more like clearance cairns, and they may therefore be of more recent date. Cairn (5) lies at the eastern end of a line of marker stones (the rest of the line lying outwith the proposed development area), which are depicted on the current (2011) Ordnance Survey map. It is possible that cairn (5) may therefore have formed part of this line of marker or boundary stones.

#### Medieval or Later Farmsteads, Agrarian and Settlement Features

11.4.4 The remains of six farmsteads (4, 17, 18, 21, 26 & 29), of medieval or later date were recorded providing evidence of widespread cultivation of the proposed development area during the pre-improvement period. In the western part of the site farmstead (4) appears to correspond with the farmstead of Fryer Dykes as depicted on Roy's Military Survey map (1747-55), the irregular nature of the remains of this farmstead point to potential medieval origins.

11.4.5 The ruined remains of Boonslie farmstead (18) lie at the north of a cluster of other remains indicative of agrarian activity in the landscape. The farmstead sites (21 & 26), as well as the nearby associated remains of rig and furrow (25), two enclosures with associated rig and furrow (19 & 20), two buildings (22 & 23), a bank (24) and the remains of a possible structure and area of rig and furrow (27), are likely to be the predecessors of the site (18) which now bears the name Boonslie, and provide an insight into the historical development of agrarian activities in the area.

11.4.6 The remains of a farmstead on the northern slopes of Watch Law (17) are suggestive of an early pre-improvement date. While the site of Branslieshiel farmstead (29), which is still partially upstanding, is clearly of more recent date.

11.4.7 Three lengths of bank (2, 12, & 15) also provide evidence of the utilisation of the landscape of agrarian purposes. In addition three clearance cairns (28, 31 & 33) provide evidence of the modification of the landscape for agricultural purposes. Cairns (5 & 13) may be of prehistoric origin, but are considered more likely to be further examples of clearance cairns.

11.4.8 Two sheepfolds (11 & 30) were recorded within the proposed development area. In the eastern half of the development circular sheepfold (30) survives only as a low turf bank. The second sheepfold (11) was

found to be of modern date, and provides evidence of the continuing use of the landscape for agricultural purposes.

#### Trackways and Marker Stones

- 11.4.9 A trackway known as the Herring Road (7) runs in a roughly north-east to south-westerly direction across the western part of the site. The route is marked out by a number of marker stones (9 & 10), one of which was identified by the field survey, and one which could not be located.
- 11.4.10 Three other trackways (1, 14 & 32) were recorded within the proposed development area. A marker stone (3) was recorded at the northern end of trackway (2). A further marker stone (16) was recorded at the northern end of a field bank (15).
- 11.4.11 A possible cairn (5) may also have functioned as a marker, perhaps a boundary marker, as it lies to the east of a line of marker stones which are depicted on the current (2011) Ordnance Survey map.

#### Miscellaneous

- 11.4.12 A spring (34) is located close to the eastern boundary of the site. A location marked as Priest's Well (8) on the 1<sup>st</sup> Edition Ordnance Survey map may also refer to a spring, although field survey was unable to find such a feature at this location.
- 11.4.13 An aircraft crash site (6) dating from the 1940s is located towards the north-western boundary of the site.

#### Assessment of the archaeological potential of the area

- 11.4.14 The proposed development area comprises areas of rough and improved pasture and areas of marsh, predominantly to the west, with the existing Crystal Rig Wind Farm to the south. The HLA map indicates that the area comprises a mix of potentially prehistoric rough grazing with areas of 20th century drained rough grazing and unenclosed improved pasture, as well as 18th to 19th century rectilinear fields, mostly around the known farmsteads. The area is depicted as open moorland and marsh on Roy's map of 1747-55 suggesting that the land use of the proposed development area has changed little since this time
- 11.4.15 There are no known sites of definite prehistoric date within the proposed development area but there are several prehistoric sites in the vicinity. These include a cist (NT77SW 16) and settlement (NT77SW 29) at Thurston mains; a hut circle (NT66NE12), cairn (NT66NE 16) and possible cairn (NT66NE 14) on Elsie Cleugh Rig; Yadlee stone circle (NT66NE 3); Nine Stone Rig cairn field (NT66NW 7); Rough Cleugh Rig hut circle (NT66NW 8); Tripslaw Hill settlement (NT67SE 12); Lothian Edge cairns and hut circle (NT67SE 13); a possible settlement (NT67SE 4), linear features, pits and possible roundhouse (NT67SE 107); Meiklerig pit alignment (NT67SE 39) at Black Loch; and two possible settlements (NT67SE 27, NT67SE 33), a pit alignment (NT67SE 31), and a possible enclosure (NT67SE 32) at Halls. The number of

prehistoric sites within the wider area suggests that there is a moderate potential for previously undiscovered buried archaeological remains of prehistoric date to survive within the proposed development area.

- 11.4.16 Taking into account the number of known prehistoric sites within the wider area, the number of pre-improvement sites and features recorded within the proposed development area, and the historic and current land use of the proposed development area it is considered that the potential for as yet, undetected, buried remains and sites to survive within the proposed development area is moderate. However, taking into account the limited land-take required by the separate elements of the proposed development the probability of encountering hitherto undiscovered sites of archaeological significance during the course of the construction work is considered to be low.
- 11.4.17 Peat deposits within the proposed development area have the potential to contain palaeoenvironmental evidence. Deep peat sequences can contain an environmental inventory which stretches back thousands of years. Through palynological analysis it is possible to build a record of the local vegetation history and the nature of human impacts upon the landscape, for example through woodland clearance, agriculture and human occupation. It is however, only appropriate to carry out such an analysis for deep peat deposits which have formed within a discrete basin which contain an unbroken sequence; the catchment area for pollen in peat deposits that have not formed in such locations is generally too broad to be of use. .

## 11.5 IMPACT ASSESSMENT

### Direct (Construction) Effects

#### Predicted Effects

- 11.5.1 Ground breaking activities associated with the construction of the development (such as those required for turbine bases and crane hard standings, access tracks, cable routes, compounds, etc) have the potential to disturb or destroy features of cultural heritage interest. Other construction activities, such as vehicle movements, soil and overburden storage and landscaping also have the potential to cause direct, permanent and irreversible effects on the cultural heritage.
- 11.5.2 A construction effect is predicted upon trackway (32) which would be traversed by the access trackway at two locations, between turbines 4 & 5 and between turbines 7 & 9. The trackway is considered to be of lesser importance, and the proposed development would have an effect of low magnitude and negligible significance.
- 11.5.3 Site (27) comprises an area of rig and furrow cultivation remains, the remains of a turf-built bank (27a), and the remains of a building and enclosure (27b). The features were recorded by field survey, and the relict rig and furrow cultivation is visible of aerial photography. A construction effect is predicted upon the

rig and furrow cultivation remains. The site is considered to be of local importance, and the proposed development would have an effect of high magnitude and moderate significance.

- 11.5.4 Ground-disturbing excavations associated with the construction of the development could have a direct effect on any hitherto undiscovered, buried archaeological remains present in affected areas. However, taking into account the limited extent of the proposed ground disturbance generated by the construction of access tracks, cable routes, turbine bases, hardstanding areas and construction compound, the likelihood of encountering remains of archaeological significance is considered to be low.

#### Proposed Mitigation

- 11.5.5 In order to comply with Local Plan Policy ENV7, a programme of archaeological mitigation works would be carried out to offset the predicted direct effects on archaeological resources within the site. All work would be conducted to relevant Institute for Archaeologists Standard and Guidance Documents (Archaeological Field Evaluation, Archaeological Excavation, and Archaeological Watching Brief).
- 11.5.6 The mitigation measures would be presented for approval by the East Lothian Council Archaeology Service (ELCAS) in a Written Scheme of Investigation (WSI), and carried out prior to or during construction, as appropriate. The WSIs would make provision for further excavation, post-excavation analyses and dissemination of the results of the mitigation works, as well as for archiving of the project materials and records, as appropriate.

Site specific mitigation proposals are summarised in the following sections.

#### *Preservation in situ*

- 11.5.7 The emphasis in planning policy (PAN2/2011 and Local Plan Policy ENV 7) is for preservation in situ of important remains. Where that is not possible, the excavation and recording of the affected site is required in advance of construction, at the developer's expense.
- 11.5.8 In accordance with the requirements of planning policy, where features lie in close proximity to proposed development features, or construction activity areas, they will be avoided as far as practical to ensure their preservation in situ.
- 11.5.9 With reference to Appendix 11.1 in Volume 3 of this ES, Turf bank (27a) and building and enclosure (27b) and four other features (24, 25, 26, & 29) would be avoided in accordance with a strategy agreed with the East Lothian Council Archaeological Officer, to prevent accidental damage occurring to the remains during construction activities in their vicinity:

#### *Detailed Survey and Trial Trenching*

- 11.5.10 In advance of construction of the proposed construction compound a detailed survey of the area of rig and furrow (27) would be carried out, including a review of aerial photographs. This would be followed by a programme of archaeological trial trenching evaluation. Approximately 5% of footprint of the compound would be investigated by a series of trial trenches positioned to provide a representative spread across the area; to ensure appropriate investigation of the headlands of the rig and furrow cultivation remains; and to enable the full recording of the depth and frequency of the furrows.

#### Residual Effects

- 11.5.11 A construction impact predicted upon an area of rig and furrow cultivation remains (27) would be of high magnitude and moderate significance. The predicted impact would be offset by the conduct of the proposed programme of mitigation works, which would minimise the loss of the archaeological resource by preservation by record, therefore reducing the impact to minor significance.
- 11.5.12 A construction impact is predicted upon trackway (32) at the two locations where it would be traversed by the access tracks. No mitigation is considered necessary for this site which is of negligible sensitivity and which would receive a direct and residual effect of no more than low magnitude and negligible significance.

#### Indirect (Operational) Effects

##### Predicted Effects

- 11.5.13 A list of those external receptors within a 10 km radius of the boundary of the proposed development area and predicted by the blade tip Zone of Theoretical Visibility (ZTV) to have theoretical views of one or more turbines is presented as Appendix 11.2 in Volume 3 of this ES, and their locations are shown on Figure 11.2.
- 11.5.14 The assessment of magnitude of effects has been based on the analysis of the blade tip height ZTV, taking into account the distance of the assessed receptor from the development, the number of turbines visible and the present baseline setting of each site. The ZTV model is, however, a coarse predictive tool based on bare-earth surface topography and maximum blade-tip heights. It takes no account of obstructions to intervisibility caused by existing forestry and other vegetation, or buildings and other man-made features. Therefore, professional judgement has been used to assess the significance of effects informed by the ZTV and site visits.
- 11.5.15 Scheduled Monuments, candidate sites for scheduling, Category A and B Listed Buildings, Conservation Areas, Inventory status Gardens / Designed Landscapes, and Inventory status Historic Battlefields within 10 km of the development are all considered. Assessment of effects on Category C Listed Buildings is

restricted to those within 5 km of the development as these are all generally minor vernacular building types of the local historic environment, with localised settings.

- 11.5.16 Analysis of the ZTV indicates that there will be theoretical visibility of the turbines from 88 Scheduled Monuments, one candidate site for scheduling, 20 Category A Listed Buildings, 7 Inventory status Gardens/ Designed Landscapes, 8 Conservation Areas, two Inventory status Historic Battlefield, 186 Category B Listed Buildings, and 3 Category C Listed Buildings.
- 11.5.17 All sites predicted by the blade tip ZTV to have theoretical intervisibility with the development are tabulated in Appendix 11.2, and illustrated on Figure 11.2. For all of these sites (with the exception of 18 Scheduled Monuments, three Category A Listed Buildings, two GDLs, one Inventory Historic Battlefield and 13 Category B Listed Buildings (as listed in Appendix 11.3) the development would be visible either in front of or behind one or more of the existing Crystal Rig I & II and Aikengall I wind farms and the recently consented Aikengall II (Wester Dod) Wind Farm. Taking into account this baseline setting, it is predicted that these cultural heritage assets would receive an indirect (operational) effect of no more than low magnitude and minor significance.
- 11.5.18 An assessment of the predicted effects on the 37 sites which are predicted by the cumulative ZTV (Figure 11.3 located at the end of this section) to have visibility of Phase III of the Crystal Rig Wind Farm only, is presented in tabulated form in Appendix 11.3, Volume 3 of this ES. No significant effects are predicted for these 37 sites.

#### Proposed Mitigation

- 11.5.19 No mitigation would be required to reduce or offset the predicted non significant operational effects.

#### Residual Effects

- 11.5.20 During its operational lifetime, the residual effects of the development on the settings of the sites and monuments within the 10 km study area will be the same as the predicted effects.

## 11.6 CUMULATIVE EFFECT ASSESSMENT

- 11.6.1 Cumulative effects on the cultural heritage resource result from changes to the current baseline setting of the resource caused by the proposed development in conjunction with other developments that occurred in the past or are likely to occur in the foreseeable future (Landscape Institute 2002). Operational (Crystal Rig developments, Ruchlaw West Mains, Aikengall & Moorcockhall) or Approved (Woodhall, Hoprigshiels & Ferneylea, Wester Dod), wind farms have been taken to be part of the baseline setting of the key cultural heritage receptors in the assessment outlined in the sections above.

- 11.6.2 Nine wind turbines or wind farm developments are currently proposed within a 10 km radius of the proposed development. Of these, six (Redacre, Newmains, Berran Cairndinnis, South Belton, Belhaven Trout & Belhaven Fruit Farm) are small scale developments of between one and three turbines which are less than 50m tip height. The small size of these proposed turbines means that they are considered to have an effect on the settings of cultural heritage assets only within a localised area, and therefore these are not considered likely to have a cumulative impact along with the proposed development.
- 11.6.3 The proposed development at Cocklaw Hill (56.3 m to tip) would comprise only a single turbine, and would therefore have an impact upon the settings of cultural heritage assets only within a localised area. The proposed Dunbar Wind Farm (3 turbines, 100 m tip height) would be located over 7 km from the proposed development, in a coastal location. It is therefore considered unlikely that either Cocklaw Hill or Dunbar Wind Farm would have a cumulative impact along with the proposed development.
- 11.6.4 The proposed Blackburn development (6 turbines, 126 m to tip) would be located in an area where there is no visibility of the proposed development, and there would be very few cultural heritage assets in the vicinity of Blackburn which could receive a cumulative impact as a result of the combination of the Blackburn and Phase III of the development.
- 11.6.5 The addition of those proposed wind energy developments as currently proposed would not increase the magnitude of the predicted effects on the settings of the key cultural heritage receptors and hence no significant cumulative effects are predicted.

## 11.7 SUMMARY

- 11.7.1 Thirty-four cultural heritage constraints have been identified within the proposed development area. One significant direct impact has been predicted from the construction of the proposed development. A direct impact of moderate significance, which is predicted upon area or rig and furrow cultivation remains (27) as a result of the construction of the construction compound, will be offset by a scheme of mitigation works including detailed surveying and a trial trenching evaluation which will lead to the accrual of archaeological data.
- 11.7.2 Taking into account the limited extent of the proposed ground disturbance generated by the elements of the proposed development the likelihood of encountering remains of archaeological significance is considered to be low.
- 11.7.3 Eighty-eight Scheduled Monuments, one Candidate site for Scheduling, 20 Category A Listed Buildings, 7 Inventory status Gardens/ Designed Landscapes, 8 Conservation Areas, two Inventory status Historic Battlefield, 186 Category B Listed Buildings have been identified within 10km from which there are

predicted views of the proposed wind farm. Three Category C Listed Buildings have been identified within 5km from which there are predicted views of the proposed wind farm. In no case would the settings of these receptors be affected significantly by the construction and operation of the proposed development.

- 11.7.4 The cumulative effect of the proposed development in combination with other proposed wind energy developments in the vicinity is considered to be of no more than minor significance.
- 11.7.5 A programme of mitigation works would be proposed in a WSI and agreed with the local authority to offset the predicted loss of cultural heritage sites within the proposed development area. No significant residual effects are anticipated in relation to cultural heritage interests and the development proposals are considered to conform with the aims of national, regional and local planning policy as regards cultural heritage



# Appendix 11

## ***Cultural Heritage***

### CONTENTS

APPENDIX 11.1	CULTURAL HERITAGE SITES WITHIN THE SITE SURVEY AREA.....	202
APPENDIX 11.2	CULTURAL HERITAGE SITES WITHIN A 10 KM RADIUS WITH THEORETICAL VISIBILITY OF THE DEVELOPMENT.....	206
APPENDIX 11.3	CULTURAL HERITAGE SITES WITH THEORETICAL INTERVISIBILITY ONLY WITH THE DEVELOPMENT .....	215

**Appendix 11.1 CULTURAL HERITAGE SITES WITHIN THE SITE SURVEY AREA**

Site No.	Site Name / Site Type	Easting	Northing	NMRS No. / HER No.	Source	Description	Importance
1	Trackway				Maps; Field survey	Forrest's map (1802) and subsequent maps depict a trackway aligned north-west to south-east crossing Dunbar Common.  Field survey identified that the route is now in use as a footpath which runs from Stenton to Duns, skirting the north-east side of the Yadlee forestry plantation. Its course through the site runs from 364000 669820 to 365000 668800.	Lesser
2	Bank			MEL 9933	HER; Maps; Field survey	Field survey identified the remains of a substantial field boundary bank running between the Mossy Burn 364750 670080 and the north corner of a forestry plantation at NT 364277 669513. The bank is approximately 3 m wide and has a ditch approximately 2 m wide and 4m deep running along its north-western side.	Lesser
3	Boundary Stone	36475	67007		Maps; Field survey	A boundary stone is depicted on the 1 <sup>st</sup> Edition Ordnance Survey map (Haddingtonshire Sheet XVI, 6" to 1 mile, 1855).  Field survey noted a large unworked stone beside a small water course, close to the field boundary bank (48).	Lesser
4	Farmstead; enclosure	36491	67007	NT67SW 16; MEL1700	NMRS; HER; Aerial Photographs; Maps; Field survey	The NMRS records the site of an enclosure situated c. 1km SW of the summit of Watch Law. The site is identifiable on aerial photographs but is not depicted on any maps. The NMRS archive comprises four oblique aerial photographs from 1983. These show a large square enclosure and a second, large sub-rectangular enclosure with a small structure/enclosure to the NE.  Field survey identified a small farmstead comprising at least four enclosures and four buildings, and a small enclosure or other structure. Four distinctive low mounds were also identified which may conceal buried features of archaeological interest, such as kilns or middens. All of the features are visible as turf-bank remains, surviving to a maximum height of approximately 0.4 m.  The location of this farmstead accords with that of a farmstead depicted on Roy's map (1747-55) and named as Fryer Dykes.	Local
5	Cairn	365099	670673		Field survey	Field survey noted a small cairn, measuring approximately 3 m by 2.5 m and 0.5 m high.	Local
6	Lodge Burn, Wester Hartsdie Edge Aircraft crash site, Typhoon	36527	67071	NT67SE 18; MEL9790	NMRS; HER; Field survey	The HER records this location as the crash site of a Typhoon plane which crashed on the 14 <sup>th</sup> February 1943.  Field survey found no remains related to the crash.	Local
7	The Herring Road	365522	670245	MEL9936	HER; Maps; Aerial photographs; Field survey	The course of the Herring Road can be traced running in a roughly north-east to south-westerly direction to the east of Hartsdie Edge, passing to the west of the summit of Watch Law, and then running towards Cracking Shaw Forest (from 365600 670420 – 364250 667280 within the site area). The Herring Road is first depicted on Forrest's map (1802) and named as the 'Herron Road'. It is also marked on the Ordnance Survey 1st Edition map (Haddingtonshire Sheets XI and XVI, 6" to 1 mile, 1855), and on subsequent editions of the Ordnance Survey map. It is said that the track gained its name as it was formerly used by the inhabitants of Lauderdale for the conveyance of herring from Dunbar (Hall 1996).  Field survey recorded the line of the trackway which is visible as a slight hollow way and green track approximately 2.5m wide.	Local
8	Priest's Well	36543	67026		Maps	Priest's Well is annotated on the Ordnance Survey 1 <sup>st</sup> Edition map (Haddington Sheet XI, 6" to 1 mile, 1855).  Field survey failed to identify any remains of a well or spring at this location. It is possible that the term 'Priest's Well' referred to a natural spring which had no supplementary manmade structures.	Lesser
9	Boundary stone	365476	670141	MEL9935	HER; Maps; Field survey	The Ordnance Survey 1 <sup>st</sup> Edition map (Haddingtonshire, Sheet XI, 6" to 1 mile, 1855) marks a stone at this location.  Field survey identified a roughly worked oblong orthostat approximately 1 m high and measuring approximately 0.4 m x 0.2 m in section. The stone stands on the eastern side of the Herring Road (7).	Lesser
10	Boundary Stone	365347	669850		Maps; Field survey	The Ordnance Survey 1st Edition map (Haddingtonshire, Sheet XVI, 6" to 1 mile, 1855) marks a stone at this location.  Field survey failed to locate the stone.	Lesser

Site No.	Site Name / Site Type	Easting	Northing	NMRS No. / HER No.	Source	Description	Importance
11	Sheepfold	365300	669833	MEL9943	HER; Maps; Field survey	Field survey identified a modern sheepfold at this location, as depicted on the current (2011) Ordnance Survey 1:10000 map.  There are no traces of earlier sheepfolds at this location.	Lesser
12	Bank	365830	670469	MEL9951	HER; Field survey	Field survey identified a grass covered, earthen field bank 2 m wide and 0.3m high. It follows the existing fence line and is probably the remains of its predecessor.	Lesser
13	Cairn	36578	67021	NT67SE 1; MEL1672	NMRS; HER; Field survey	The NMRS / HER record the remains of a disturbed turf-covered mound 7m in diameter and 0.4m high on Watch Law. They state that some stone is evident in its damaged east side but there is no trace of a kerb nor any positive indication that it is a burial mound.  Field survey recorded a grass-covered cairn, which appeared more likely to be a clearance cairn than a burial cairn. Otherwise it was found to be as it had been described by the NMRS.	Unknown (Lesser)
14	Trackway	365775	670287	MEL9949	HER; Field survey	Field survey identified a disused, grass covered trackway running across the moorland. The track was seen as a slight hollow, which was approximately 2m wide and 0.2m deep.	Lesser
15	Bank	366005	670421	MEL9948	HER; Field survey	Field survey recorded a turf covered earthen bank on a NNW-SSE alignment, which was approximately 2m wide and 0.7m high.	Lesser
16	Boundary stone	365972	670600	MEL9947	HER; Field survey	Field survey identified an upright boundary stone situated next to an existing track. Now slightly listing towards one side, the hewed sandstone block is 1m high, 0.3m wide and 0.1m thick.	Lesser
17	Watch Law, Enclosure, Farmstead	36611	67081	NT67SE 18; MEL1681	NMRS; HER	Watch Law is depicted and annotated on Sharp, Greenwood, & Fowler's maps of 1824 and 1844.  The remains of a sheepfold and an enclosure are visible on modern (Google Earth TM) aerial photography.	Local
18	Farmstead	36665	67067	MEL9945	HER; Field survey	The HER record the location of the ruined farmstead of Boonslie, as marked on the current (2011) Ordnance Survey 1:10,000 map. The farmstead comprises two buildings (now unroofed) connected by a central enclosure, with a second enclosure to the WSW. One building, directly next to the track, has two internal compartments with ashlar blocks capping the windows and door and was probably the main farmhouse. The second building seems less formal and has no internal compartments which suggests this building was the stock house for the steading. A large area of rig and furrow lies to the east of the buildings.  Boonsly is first recorded on Forrest's map of 1799 on which it is depicted as two buildings. The farmstead is also marked on Ainslie's map of 1821 and is depicted as two buildings on Thomson's map of 1822. Boonslie is also depicted and annotated on Sharp, Greenwood, & Fowler's maps of 1824 and 1844.	Local
19	Bank, Rig and furrow, Clearance cairn	366536	670533	MEL9946	HER; Field survey	Field survey identified an area of rig and furrow encompassing an area of roughly 50 m by 50 m, the rig had a wavelength of 6.5m and survived to a maximum height of 0.2m.  A grass covered clearance cairn is located to the north-east (at 366537 670532). The clearance cairn measured approximately 2m by 1.5m and a maximum of 0.2m high.  An earthen bank is located to the south of the area of rig and furrow. The turf covered bank is orientated east to west and measures approximately 1.5m in width and 0.4m in height.	Lesser
20	Enclosure, rig-and-furrow	366599	670432	MEL9950	HER; Field survey	Field recorded a turf bank enclosure, of which only three sides now remain. The grass covered banks survive to a maximum height of 0.5 m, and are approximately 1.5m wide. An area of rig and furrow was located to the ESE of the enclosure (366299 670432). The rig had a wavelength of 5m and survived to a maximum height of 0.2m high. It was aligned east to west on a south-east facing slope.	Local

Site No.	Site Name / Site Type	Easting	Northing	NMRS No. / HER No.	Source	Description	Importance
21	Farmstead	366620	670271	NT67SE 19; NT67SE 20; MEL1682; MEL8626	NMRS; HER; Maps; Aerial photographs; Field survey	<p>The NMRS and HER record that an extensive area of earthworks is visible on oblique aerial photographs. The features probably represent the remains of a farmstead, enclosures and rig and furrow cultivation dating to the late medieval period.</p> <p>The current 1:25,000 OS map depicts a small rectangular enclosure on the west side of Boonslie Burn. This site is mentioned in the NMRS (NT67SE 19) and is identifiable on the oblique aerial photographs.</p> <p>The RCAHMS oblique aerial photographs show the site to consist of two rectangular dwellings with a square-shaped enclosure running from the buildings down slope to the burn. The buildings and dwellings survive as earthworks which are estimated to be about 1 m high. A small area of rig and furrow is also visible to the south of the enclosure. Immediately north of the site there is a large linear earthwork running east to west for about 100 m. None of these remains are depicted on early maps.</p> <p>Field survey identified a settlement consisting of at 3 enclosures and at least eight structures surviving as turf-covered walls and surviving to a maximum height of approximately 1 m.</p> <p>East Lothian Council Archaeological Service advised that the site should be considered as a candidate site for Scheduling.</p>	National
22	Boonslie, Building	366645	669831		Field survey	Field survey identified the remains of a sub-circular building located in rough pasture on a gentle hill slope adjacent to a burn. The shieling hut is preserved as a low turf bank measuring 4 m by 3.5 m by 0.2-0.4 m high.	Local
23	Boonslie, Building	366756	670190		Field survey	Field survey identified the remains of a rectangular building located within slightly improved pasture on a flat terrace near to a burn. The building is preserved as a turf and stone bank aligned northwest to southeast measuring 8 m by 5 m by 0.5 m (maximum), with banks 1.5 m wide. There is a possible entrance on the northwestern corner and two curvilinear banks enclosing the southern and western sides. The banks measure 12 m and 9 m long by 2 m wide and are upstanding to 0.4 m high.	Local
24	Boonslie, Field bank	366831	670211		Field survey	Field survey identified a small section of turf bank aligned north-east to south-west and measuring 20 m by 1.5 m and a maximum of 0.4 m in height.	Local
25	Rig and Furrow	366860	670243		Aerial photographs; Field survey	<p>A small area of rig and furrow is identifiable on modern aerial photographs (Google Earth™).</p> <p>Field survey identified the denuded remains of this rig and furrow. The rig was aligned WNW to ESE with a wavelength of 5 m and was upstanding to 0.2 m.</p>	Local
26	Boonslie, Enclosure	366909	670266		Aerial photographs; Field survey	<p>A rectangular enclosure is visible on modern aerial photographs (Google Earth™).</p> <p>Field survey identified a rectangular enclosure located within slightly improved pasture on sloping ground adjacent to a burn. The enclosure was aligned WNW to ESE and consisted of a turf bank delimiting an area measuring 38 m by 26 m by with banks measuring 1-1.5 m wide and 0.2-0.4 m high. A possible sub-circular platform, 4-5 m diameter is visible at 366915 670261 in the southeast corner and the very denuded remains of possible rig and furrow cultivation are visible in the northeast and northwest corners.</p>	Local
27	Structure; Rig and furrow	36704	67031		Aerial photographs; Field survey	<p>Field survey identified the remains of a small possible shieling hut or building within slightly improved pasture adjacent to a burn. The remains consist of a sub-rectangular turf bank measuring 4 m wide by at least 2.5 m long by 0.4 m high. The bank is 1.5-2 m wide and only the southern, western and eastern sides are present. The structure lies within an area of denuded rig and furrow delimited by a turf bank (27a).</p> <p>27a Field survey identified the remains of a denuded turf bank enclosing an area of rig and furrow cultivation. The bank is aligned northwest to southeast and measures approximately 60 m by 1.5 m by 0.4 m high. The rig and furrow is aligned roughly north-south with a wavelength of 2.5 m and is upstanding to 0.2 m. Two structures (27b) are located at the southern terminus of the bank. The bank and structures are visible on modern aerial photography.</p> <p>27b The remains of a building and an enclosure are located at 367093 670285. The building remains consist of a rectangular turf bank aligned north to south measuring at least 7 m by 3 m by 0.5 m high. The bank is 1 m wide and the northern end is missing. A sub-square enclosure is present on the eastern side, preserved as a turf bank measuring approximately 8m by at least 5 m by 0.5 m high. The bank measures 1.5 m wide and has been truncated by a silted up and turfed over drainage ditch aligned east to west.</p>	Local

Site No.	Site Name / Site Type	Easting	Northing	NMRS No. / HER No.	Source	Description	Importance
28	Clearance cairn (possible)	367107	669979		Field survey	Field survey noted a large mound situated in an area of rough pasture. It measures approximately 7 m by 6 m and 1 m high. The mound is considered to be a possible clearance cairn.	Unknown (Local)
29	Farmstead	36711	66968	NT66NE 19; MEL9912; MEL8625	NMRS; HER; Maps; Aerial photographs	<p>The NMRS and HER note the presence of a farmstead and enclosure that are visible on oblique aerial photographs. The Ordnance Survey 1st Edition map (Haddingtonshire Sheet XVI, 6" to 1 mile, 1855) depicts a building with an enclosure to the east which is annotated as Branslyshiel. The 2nd Edition Ordnance Survey map annotates the building and enclosure as Branslieshiel. Subsequent editions of the Ordnance Survey map do not name the farmstead. The building is also visible on vertical aerial photographs from 1946 and 1965.</p> <p>Field survey recorded the remains of a small rectangular building, measuring approximately 10 m x 5 m. (The remains were found to be located to the north-east of SMR no. MEL 8625. The newer SMR entry MEL 9912 refers to the location of the farmstead as recorded by the field survey.)</p>	Local
30	Sheepfold	36700	66953	MEL9914	HER; Maps; Aerial photographs; Field survey	<p>The HER records a circular sheepfold situated 800 m south-west of the summit of Bransly Hill. The sheepfold is also depicted on the Ordnance Survey 1st Edition map (Haddingtonshire, Sheet XVI, 6" to 1 mile 1855), and is visible on vertical aerial photographs dating from 1965.</p> <p>Field survey located the sheepfold which survives as a circular turf bank, and measures approximately 30m in diameter.</p>	Lesser
31	Clearance cairns (possible)	367543	669959		Field survey	<p>Field survey noted two low mounds located within an area of rough pasture.</p> <p>a) 367543 669959 – This mound measures approximately 4.5m by 4m and 0.5m high.</p> <p>b) 367556 669952 – This mound measures approximately 5m by 5m and 0.4m high.</p> <p>The mounds are possible clearance cairns.</p>	Unknown (Local)
32	Track				Maps; Aerial photographs; Field survey	<p>A track is depicted on the Ordnance Survey 1<sup>st</sup> Edition map (Haddingtonshire, Sheets XI &amp; XVI, 6" to 1 mile, 1855), crossing Bransley Hill from 36701 66933 to 368849 670570. The track is also visible on vertical aerial photographs.</p> <p>Field survey recorded the track, which is approximately 2.5m wide, crossing Bransley Hill.</p>	Lesser
33	Clearance cairn	367519	669422		Field survey	Field survey noted a clearance cairn on the edge of an area of marsh. It measures approximately 4m by 2.5m and 0.5m high.	Lesser
34	Spring	36841	66946	MEL9712	HER; Maps	A spring is recorded on the 1 <sup>st</sup> Edition Ordnance Survey map (Haddingtonshire Sheet XVI, 6" to 1 mile, 1855) at this location.	Lesser

## APPENDIX 11.2 CULTURAL HERITAGE SITES WITHIN A 10 KM RADIUS WITH THEORETICAL VISIBILITY OF THE DEVELOPMENT

Site no.	Site name	Status	Easting	Northing	No. of turbine tips theoretically visible (according to ZTV)	Distance to nearest turbine (km)	Sensitivity of receptor
369	Ewieside Hill,fort 640m NE of Edmondsdean	Scheduled Monument	377780	668773	9	9.6	National
379	Shannabank Hill,fort	Scheduled Monument	375096	662916	3	9.3	National
739	Easter Broomhouse,standing stone	Scheduled Monument	368008	676615	9	6.7	National
740	Kingside Hill,stone circle	Scheduled Monument	362630	665035	10	4.9	National
741	Kirklandhill,standing stone 275m SW of	Scheduled Monument	361712	677614	11	8.3	National
742	Loth Stone,standing stone,Traprain Law	Scheduled Monument	357823	674145	8	8.1	National
743	Penraig Hill,standing stone	Scheduled Monument	358102	676816	11	9.6	National
744	Standingstone Farm,standing stone	Scheduled Monument	357747	673636	8	7.9	National
755	Traprain Law,fort	Scheduled Monument	358194	674692	11	8.1	National
766	Dunbar Castle & fort	Scheduled Monument	367819	679318	11	9.4	National
767	Red Friars Monastery,dovecot	Scheduled Monument	367789	678841	11	8.9	National
3191	French Camp,fort,Dunglass	Scheduled Monument	376318	671717	7	8.3	National
3769	Townhead of Duncanlaw, enclosure and cross-base, Cross Hill	Scheduled Monument	354944	668217	1	9.7	National
3933	Blackcastle Hill,homestead 1300m SSE of Thurston Mains	Scheduled Monument	371283	671743	11	3.6	National
4038	Dryburn Bridge,enclosure 300m SE of	Scheduled Monument	372804	675278	11	7.1	National
4040	Skateraw,ring ditches and cropmarks 300m NW of	Scheduled Monument	373016	675429	11	7.4	National
4070	Knowes,enclosure 450m ESE of	Scheduled Monument	361457	677579	11	8.3	National
4108	Hedderwick,enclosures 350m NW of	Scheduled Monument	363135	677529	11	7.8	National
4169	East Linton,fort,800m SW of	Scheduled Monument	358490	676564	11	9.1	National
4423	Nine Stone Rig,three stone settings	Scheduled Monument	362135	665286	11	4.9	National
4443	Yadlee, stone circle 250m S of	Scheduled Monument	365403	667323	11	2.4	National
5675	Catcraig,limekilns and limestone quarry	Scheduled Monument	371635	677249	7	8.2	National
5761	Pleasants,promontory fort 500m WSW of	Scheduled Monument	365904	675548	3	5.5	National
5762	Hurkletillane,enclosure 250m S of	Scheduled Monument	366169	676030	3	6.1	National
5763	Pleasants,enclosure 100m SE of	Scheduled Monument	366482	675655	1	5.7	National
5764	Doon Hill,forts	Scheduled Monument	368417	675557	11	5.7	National
5765	Doon Hill,enclosure	Scheduled Monument	368592	675340	5	5.5	National
5766	The Chesters,fort,Spott	Scheduled Monument	365994	673926	11	4.0	National
5767	Spott Dod,fort	Scheduled Monument	366502	674501	11	4.6	National
5768	Bell Craig,promontory fort,Spott	Scheduled Monument	367441	673981	5	4.0	National
5769	Corsick Hill,enclosure	Scheduled Monument	372489	674323	1	6.2	National
5770	Crowhill,enclosure WNW of	Scheduled Monument	373389	674189	3	6.7	National
5771	Innerwick Castle,fort and ring ditch	Scheduled Monument	373463	673776	2	6.5	National
5829	Pleasants,enclosure and pit alignment 1100m WSW of	Scheduled Monument	365191	675282	9	5.3	National
5830	South Belton,enclosure 300m NE of	Scheduled Monument	365371	677204	11	7.2	National
5831	Meikle Pinkerton,enclosure 500m SSW of	Scheduled Monument	370012	675101	8	5.6	National
5832	Thistly Cross,enclosure 200m E of	Scheduled Monument	365604	677541	11	7.5	National
5833	Bowerhouse,enclosure 250m NW of	Scheduled Monument	366423	676783	9	6.8	National
5834	Eweford Cottages,enclosure 200m S of	Scheduled Monument	366545	677221	11	7.3	National

Site no.	Site name	Status	Easting	Northing	No. of turbine tips theoretically visible (according to ZTV)	Distance to nearest turbine (km)	Sensitivity of receptor
5835	Eweford Cottages,enclosure and ring ditches ESE of	Scheduled Monument	366812	677360	11	7.4	National
5836	Easter Broomhouse,promontory fort 400m S of	Scheduled Monument	367926	676367	3	6.4	National
5840	Channel Brae,enclosure 200m S of	Scheduled Monument	365046	672950	5	2.9	National
5841	Spott Mill,promontory fort	Scheduled Monument	365381	674217	10	4.2	National
5842	Black Loch,enclosure 350m SSE of	Scheduled Monument	366752	673119	11	3.2	National
5843	Glen Cottage,enclosure 800m W of	Scheduled Monument	369981	674279	11	4.8	National
5844	Meikle Pinkerton,fort 500m S of	Scheduled Monument	370202	675078	9	5.6	National
5845	Thurston Mains,enclosure 600m WNW of	Scheduled Monument	370350	673080	11	3.9	National
5846	Glen Cottage,enclosure 300m WSW of	Scheduled Monument	370472	674298	11	5.0	National
5847	Glen Cottage,promontory fort 250m WNW of	Scheduled Monument	370574	674482	11	5.2	National
5848	Braidwood,enclosure 200m NE of	Scheduled Monument	372557	673398	10	5.6	National
5868	Knowes Mill,ring ditch and enclosure 400m NNW of	Scheduled Monument	360456	678409	11	9.5	National
5870	Thurston,enclosures and ring-ditch 600m NE of	Scheduled Monument	371978	674701	9	6.1	National
5887	Standingstone,enclosure 350m WSW of	Scheduled Monument	357376	673427	2	8.1	National
5892	Springfield,enclosure 300m NNE of	Scheduled Monument	375158	671642	5	7.1	National
5893	Springfield,palisaded enclosure and ring ditch 200m E of	Scheduled Monument	375352	671158	1	7.2	National
5894	Springfield,enclosure 400m SSE of	Scheduled Monument	375259	670767	7	7.1	National
5895	Thurston,fort 800m NW of	Scheduled Monument	370763	675035	11	5.8	National
5896	Thurston,enclosure 800m WNW of	Scheduled Monument	370729	674833	11	5.6	National
5930	Woodhall Farm,enclosure 600m E of	Scheduled Monument	369712	672551	3	3.1	National
5940	Coldale, enclosure 550m SSW of	Scheduled Monument	355318	673035	8	9.8	National
5941	Coldale, enclosure 200m ESE of	Scheduled Monument	355706	673461	1	9.6	National
5960	Dunbar Castle Park,settlements,burials and defences	Scheduled Monument	367833	679183	11	9.2	National
5965	Standingstone,enclosure 400m NNE of	Scheduled Monument	357789	674051	7	8.1	National
5993	West Mains, enclosure 500m WNW of	Scheduled Monument	357103	672557	1	8.0	National
5994	West Mains,ring ditches 300m NNW of	Scheduled Monument	357480	672626	9	7.7	National
5995	West Mains,enclosures 400m SSW of	Scheduled Monument	357608	671887	4	7.3	National
5996	Lawhead Hill,palisaded enclosure 400m NE of West Mains	Scheduled Monument	358037	672625	11	7.2	National
6023	Chesters Quarry,enclosure	Scheduled Monument	357154	671077	1	7.5	National
6026	Sled Hill,enclosure	Scheduled Monument	357815	670163	1	6.7	National
6028	Penshiel Grange	Scheduled Monument	364163	663219	1	6.4	National
6043	Bara Loch,palisaded enclosure 250m S of	Scheduled Monument	356221	668836	1	8.3	National
6044	Chesters Farm,enclosure 300m S of	Scheduled Monument	356702	670612	1	7.9	National
6045	Whitelaw Hill,enclosure	Scheduled Monument	357194	671569	4	7.6	National
6046	Mould Bridge,enclosure 400m WNW of	Scheduled Monument	357714	671529	1	7.1	National
6050	Standingstone,enclosure 1100m WSW of	Scheduled Monument	356597	673253	6	8.7	National
6066	Lawhead Hill,enclosure	Scheduled Monument	358399	672605	10	6.8	National
6067	Whittinghame Tower,enclosure 250m SW of	Scheduled Monument	360007	673004	2	5.7	National
6068	Overhailes,enclosure 1000m ENE of	Scheduled Monument	358188	676565	11	9.4	National
6069	Houston Mill, enclosure 200m E of	Scheduled Monument	359621	677648	2	9.3	National
6107	Morham Burn,enclosures W of	Scheduled Monument	355433	672310	1	9.5	National
6108	Morham Mains,enclosure 400m S of	Scheduled Monument	355498	671023	1	9.1	National

Site no.	Site name	Status	Easting	Northing	No. of turbine tips theoretically visible (according to ZTV)	Distance to nearest turbine (km)	Sensitivity of receptor
6109	Morham Mains, enclosure E of	Scheduled Monument	355888	671460	1	8.8	National
6379	Drylawhill, cursus S of	Scheduled Monument	358937	677904	11	9.9	National
7872	Table Rings, cairn 500m WSW of Penshiel	Scheduled Monument	363706	663548	3	6.1	National
8750	Belton House, fort 450m NNE of	Scheduled Monument	364723	677125	11	7.1	National
8753	Samoya, enclosure 100m NNE of	Scheduled Monument	368801	678286	6	8.4	National
8774	Mainshill, fort 450m NNE of	Scheduled Monument	356509	672628	1	8.6	National
90098	Doon Hill, hall, Innerwick	Scheduled Monument	368712	675550	7	5.7	National
MEL1682 / MEL8626	Boonslie, Enclosures(s), Farmstead(s)	Scheduling Candidate Site	366620	670271	11	0.2	National
1514	Lochend House, The Ruins Of	Category A Listed	367760	677968	11	8.0	National
4093	Cranshaws Castle including Sundial, Covered Well and Garden Walls	Category A Listed	368158	661796	7	7.2	National
7711	Thurston Home Farm	Category A Listed	371447	674487	9	5.7	National
14530	Prestonkirk Parish Church (Church of Scotland)	Category A Listed	359247	677811	8	9.6	National
14531	Preston Mill	Category A Listed	359414	677942	11	9.6	National
14756	Bower House (Bourhouse) with Gates, Wellhead, Terrace and Boundary Walls	Category A Listed	366639	676577	9	6.7	National
14757	Bourhouse (Bower House) Dovecot	Category A Listed	366798	676710	10	6.8	National
14760	Halls Farmhouse with Retaining Walls and Gatepiers	Category A Listed	365349	672767	4	2.7	National
14764	Biel House with Terrace Walls, Chapel Remains, Sundial, Boundary Walls, Gateway, Summer House, Archway, Kennels and Service Court	Category A Listed	363193	675877	11	6.2	National
14796	Bielgrange Farmhouse with Terrace and Retaining Walls	Category A Listed	361840	675593	9	6.4	National
17500	Whittingehame Tower, (formerly Whittingehame Castle) with Wellhead and Sundial	Category A Listed	360223	673246	2	5.6	National
17502	Whittingehame Tower, Pavilion Lodges And Gatepiers (E Lodge Known As Gardener's House)	Category A Listed	360133	673482	1	5.8	National
24730	Belhaven, Belhaven Brewery (Maltings, Kilns, Vaults, Brewhouse, Boilerhouse, Chimney, Office, Former Stable and Mill).	Category A Listed	366560	678375	11	8.4	National
24764	Delisle Street, Friar's Croft Dovecot.	Category A Listed	367790	678840	11	8.9	National
24788	High Street, Courtyard through 71-75 High Street	Category A Listed	367961	678894	11	9.0	National
24790	High Street, Town House (Tolbooth)	Category A Listed	367941	678921	11	9.0	National
24802	34 High Street	Category A Listed	367954	678796	11	8.8	National
24806	56-60 (even nos.) High Street	Category A Listed	367916	678861	11	8.9	National
24829	High Street, Lauderdale House	Category A Listed	367833	679095	11	9.1	National
24842	Queen's Road Parish Church and Graveyard, Church of Scotland	Category A Listed	368183	678581	11	8.6	National
	Belhaven House	GDL	366455	678651	11	8.7	National
	Biel	GDL	363389	675556	11	5.8	National
	Broxmouth Park	GDL	369630	677840	3	8.1	National



Site no.	Site name	Status	Easting	Northing	No. of turbine tips theoretically visible (according to ZTV)	Distance to nearest turbine (km)	Sensitivity of receptor
	Dunglass	GDL	375976	671487	7	7.9	National
	Tynninghame	GDL	361650	680626	11	11.1	National
	Whittingehame	GDL	360163	672942	1	5.5	National
	Yester House	GDL	354740	666968	1	10.1	National
	Belhaven (Dunbar)	Conservation Area	366525	678644	11	8.7	National
	Cockburnspath	Conservation Area	377463	671082	1	9.3	National
	Dunbar	Conservation Area	368012	678973	11	9.0	National
	East Linton	Conservation Area	359449	677466	11	9.2	National
	Oldhamstocks	Conservation Area	374093	670544	7	5.9	National
	Stenton	Conservation Area	362239	674081	8	4.9	National
	Tynninghame	Conservation Area	360924	679024	11	9.9	National
	West Barns	Conservation Area	365538	678194	11	8.2	National
	Dunbar I	Inventory Historic Battlefield	367768	674893	11	4.9	National
	Dunbar II	Inventory Historic Battlefield	369339	676606	11	6.9	National
1465	Barns Ness Lighthouse with Keepers' Cottages and Retaining Walls	Category B Listed	372304	677209	8	8.4	Regional
1466	Belton, Dovecot	Category B Listed	364573	676831	11	6.8	Regional
1467	Belton, Gardiner's House	Category B Listed	364583	676568	11	6.6	Regional
1468	Belton Lodge with Gatepiers and Quadrant Walls	Category B Listed	364710	676719	11	6.7	Regional
1476	Tynefield with Retaining Walls	Category B Listed	362920	677822	11	8.1	Regional
1478	West Barns, Bielside House with Former Windmill	Category B Listed	365483	678292	11	8.3	Regional
1480	West Barns House with Gatepiers, Railings, and Retaining Walls	Category B Listed	365371	678073	11	8.0	Regional
1481	West Barns Inn	Category B Listed	365474	678148	11	8.1	Regional
1483	West Barns, Sherriff Works with Stalk	Category B Listed	365472	678030	11	8.0	Regional
1501	The Brunt Steading	Category B Listed	368569	673737	10	3.9	Regional
1502	Catcraig Limekilns	Category B Listed	371499	677260	7	8.1	Regional
1503	Dunbar Links, The Vaults	Category B Listed	370198	678200	6	8.6	Regional
1504	East Barns Cartshed and Granary, Power House and Stalk	Category B Listed	371717	676208	7	7.3	Regional
1505	East Barns, Grieve's House with Garden Walls	Category B Listed	371730	676283	7	7.3	Regional
1508	Hallhill Farmhouse	Category B Listed	367465	677842	11	7.9	Regional
1509	Hedderwick Farmhouse	Category B Listed	363345	677287	11	7.5	Regional
1510	Hedderwick Hill Stables with Dairy Pavilion	Category B Listed	363901	678174	11	8.3	Regional
1516	Ninewar with Walled Garden, Gardener's Cottage and Gatepiers	Category B Listed	362428	677241	11	7.8	Regional
7318	Linplum Lodge	Category B Listed	355289	670320	1	9.2	Regional
7344	Linplum (Limplum) House	Category B Listed	355470	670417	1	9.1	Regional
7345	Baro Farmhouse with Garden Walls	Category B Listed	356035	669912	1	8.5	Regional
7346	Baro House with Boundary Walls, Gates and Gatepiers	Category B Listed	356431	669682	1	8.1	Regional

Site no.	Site name	Status	Easting	Northing	No. of turbine tips theoretically visible (according to ZTV)	Distance to nearest turbine (km)	Sensitivity of receptor
7706	Skateraw Farmhouse with Retaining Walls	Category B Listed	373406	675076	9	7.4	Regional
7707	Skateraw Limekiln	Category B Listed	373847	675396	10	7.9	Regional
7712	Thurston Jubilee Horse Trough	Category B Listed	371440	673827	5	5.1	Regional
7714	Thurston Mains, Steading Cottage	Category B Listed	370988	673005	8	4.2	Regional
7715	Thurston, North Lodge with Gatepiers	Category B Listed	371749	675027	11	6.3	Regional
14499	Overhailes Farmhouse	Category B Listed	357194	676293	11	9.9	Regional
14504	Phantassie Limekiln	Category B Listed	360190	676855	10	8.3	Regional
14505	Preston Mains Farmhouse	Category B Listed	359824	678207	11	9.6	Regional
14522	Smeaton-Hepburn Gate Lodge	Category B Listed	359311	677852	9	9.6	Regional
14524	Sunnyside Cottages	Category B Listed	359219	675585	11	7.9	Regional
14525	Sunnyside Farmhouse	Category B Listed	359463	675481	9	7.7	Regional
14526	Sunnyside Farm Steading and Stalk	Category B Listed	359437	675453	9	7.7	Regional
14572	Knowes Mill House	Category B Listed	360644	678023	11	9.1	Regional
14583	Tynningame Bridge	Category B Listed	361307	678536	11	9.3	Regional
14585	Tynningame, Factor's House Dovecot and Outbuildings	Category B Listed	361122	679200	11	10.0	Regional
14594	Tynningame, Main Street, Post Office, Smithy and Smithy Cottage	Category B Listed	360972	679098	11	9.9	Regional
14595	Tynningame, Main Street, Teviot Cottage and Pear Tree Cottage	Category B Listed	360965	679123	11	10.0	Regional
14596	Tynningame, Main Street, Village Hall (Old Baker's House)	Category B Listed	361008	679064	11	9.9	Regional
14599	Tynningame Sawmill	Category B Listed	361116	678953	11	9.7	Regional
14618	Tynningame, Main Street, K6 Telephone Kiosk on Village Green	Category B Listed	360953	679086	11	9.9	Regional
14692	Townhead Farmhouse	Category B Listed	355090	668460	2	9.5	Regional
14702	Dunglass, Farm Dairy	Category B Listed	376347	672219	5	8.4	Regional
14711	Oldhamstocks, Market Cross	Category B Listed	373909	670612	1	5.7	Regional
14712	Oldhamstocks, Wellhead	Category B Listed	373974	670590	5	5.8	Regional
14713	Oldhamstocks, The Wight House with retaining walls	Category B Listed	373951	670579	5	5.7	Regional
14714	Stottencleugh Farmhouse	Category B Listed	372890	670443	3	4.7	Regional
14732	Dunglass, Walled Garden and Service Buildings and Hot-Houses	Category B Listed	376235	672071	5	8.3	Regional
14733	Oldhamstocks, Braeview with retaining walls	Category B Listed	374000	670609	7	5.8	Regional
14758	Bower House (Bourhouse) Lodge with Gatepiers and Parapet	Category B Listed	366756	676861	10	6.9	Regional
14759	Easter Broomhouse Cartshed and Granary	Category B Listed	368046	676850	10	6.9	Regional
14766	Biel House, North Gatepiers	Category B Listed	362755	677538	11	7.9	Regional
14767	Biel House, West Lodge with Gatepiers	Category B Listed	362268	675867	10	6.4	Regional
14768	Biel Mill, Beech Cottage	Category B Listed	362429	675744	10	6.3	Regional
14774	Little Spott Farmhouse	Category B Listed	365432	674771	6	4.7	Regional
14775	Newbarn Farmhouse with Retaining Walls and Gatepiers	Category B Listed	362745	674838	9	5.3	Regional
14776	Pitcox Cottages	Category B Listed	364322	675234	9	5.3	Regional

Site no.	Site name	Status	Easting	Northing	No. of turbine tips theoretically visible (according to ZTV)	Distance to nearest turbine (km)	Sensitivity of receptor
14784	Spott House with Boundary Walls, Piers, "Chapel" and Game Larder	Category B Listed	367917	675256	7	5.3	Regional
14785	Spott House, Home Farm Cottages	Category B Listed	367990	675201	10	5.3	Regional
14788	Spott House, Stable Court and Groom's House	Category B Listed	367956	675204	9	5.3	Regional
14795	Biel, Beesknowe	Category B Listed	363131	675982	11	6.3	Regional
14797	2 and 3 Pitcox Cottages, (Gardener's and Shepherds)	Category B Listed	364173	675228	9	5.3	Regional
14798	Pitcox Farmhouse with Gatepiers and Retaining Walls	Category B Listed	364261	675301	9	5.4	Regional
14800	Pitcox Smithy	Category B Listed	364110	675236	9	5.3	Regional
16845	Pitcox, K6 Telephone Kiosk	Category B Listed	364201	675264	9	5.4	Regional
17489	Whittingehame House, South Lodge	Category B Listed	360289	672485	2	5.1	Regional
17495	Whittingehame Mains Steading with Stalk	Category B Listed	359571	673760	2	6.5	Regional
17496	Whittingehame Parish Church with Graveyard Walls and Piers	Category B Listed	360312	673665	1	5.8	Regional
17503	Whittingehame Walled Garden, Summer Pavilion and Gifford Gates with Quadrant Walls and Gatepiers	Category B Listed	360271	673483	1	5.7	Regional
17512	Luggate Steading, Stalk and Cartsheds	Category B Listed	359587	674684	1	7.0	Regional
17513	Mayshiel Farmhouse and Bothy	Category B Listed	362371	664142	3	5.8	Regional
17515	Papple Steading, West and North Ranges and Stalk	Category B Listed	359085	672481	1	6.1	Regional
18190	Tynninghame Factors House with Sundial and Retaining Walls	Category B Listed	361110	679153	11	9.9	Regional
18864	Morham Bank Farmhouse with Walled Garden, Terrace Wall and Piers	Category B Listed	354599	670476	1	10.1	Regional
18866	Morham Mains Cottages	Category B Listed	355334	671745	1	9.4	Regional
18867	Morham Mains Farmhouse with retaining walls	Category B Listed	355525	671603	1	9.2	Regional
18868	The Old Manse	Category B Listed	355592	672513	5	9.4	Regional
18965	Houston Mill	Category B Listed	359319	677708	3	9.5	Regional
24729	Belhaven, Beveridge Row Sycamore Lodge	Category B Listed	366376	678396	11	8.4	Regional
24731	Belhaven, Brewery Lane, Monkscroft, Garden Pavilion/Bothy	Category B Listed	366548	678451	11	8.5	Regional
24732	Belhaven, Belhaven Road Belhaven Church, Church of Scotland	Category B Listed	366868	678761	11	8.8	Regional
24733	Belhaven Belhaven Hill Boys School, Stables, Lodge Walled Garden and Gate Piers	Category B Listed	366673	678862	11	8.9	Regional
24734	Belhaven, Duke Street, Belhaven House, Lodge, Garden Arch, Entrance Gates, Piers and Walls	Category B Listed	366448	678598	11	8.6	Regional
24735	Belhaven, 1 and 3 Duke Street	Category B Listed	366447	678570	11	8.6	Regional
24736	Belhaven, 5 Duke Street	Category B Listed	366437	678567	11	8.6	Regional
24737	Belhaven, 7 and 9 Duke Street, Outbuilding, Walls and Piers	Category B Listed	366406	678559	11	8.6	Regional
24739	Belhaven, 22 Duke Street, Charnwood	Category B Listed	366337	678515	11	8.5	Regional
24740	Belhaven, Edinburgh Road, Seafield Crescent	Category B Listed	366347	678480	11	8.5	Regional
24741	Belhaven, Edinburgh Road Southfield	Category B Listed	366841	678691	11	8.7	Regional
24746	Belhaven, 1 North Street	Category B Listed	366334	678539	11	8.6	Regional

Site no.	Site name	Status	Easting	Northing	No. of turbine tips theoretically visible (according to ZTV)	Distance to nearest turbine (km)	Sensitivity of receptor
24747	Belhaven, North Street, Garden Pavilion of 1 North Street and Conservatory	Category B Listed	366337	678575	11	8.6	Regional
24748	Belhaven, 7 North Street	Category B Listed	366293	678565	11	8.6	Regional
24749	Belhaven, 9-12 (Inclusive nos.) North Street	Category B Listed	366285	678586	11	8.6	Regional
24751	Belhaven Road, Eden Hotel	Category B Listed	367549	678804	11	8.8	Regional
24753	15 Church Street, Beach House	Category B Listed	368036	678943	11	9.0	Regional
24754	Church Street, Old Assembly Rooms	Category B Listed	368043	678890	9	8.9	Regional
24756	Countess Road, Viewfield	Category B Listed	367974	678657	11	8.7	Regional
24757	Off Countess Road, The Retreat with Stables and Walled Garden	Category B Listed	367802	678340	11	8.4	Regional
24759	3 Delisle Street, Croft House	Category B Listed	367779	678917	11	9.0	Regional
24760	4 Delisle Street	Category B Listed	367760	678905	11	8.9	Regional
24761	5 Delisle Street	Category B Listed	367749	678898	11	8.9	Regional
24762	Delisle Street, Castellau	Category B Listed	367701	678897	11	8.9	Regional
24763	Delisle Street, Friar's Croft Steading and Horsemill	Category B Listed	367734	678858	11	8.9	Regional
24765	East Links Road, St Ronans with Garden Walls and Gateway	Category B Listed	368207	678704	5	8.8	Regional
24766	East Links Road, St Ninians, Inchgarth and retaining wall	Category B Listed	368219	678685	5	8.8	Regional
24770	7 High Street, Port Lodge	Category B Listed	368076	678729	10	8.8	Regional
24771	9 High Street, Barnlea	Category B Listed	368060	678742	11	8.8	Regional
24772	15 High Street and Stable	Category B Listed	368047	678754	11	8.8	Regional
24774	23 High Street, Bamburgh Castle (through close Of 21-25 High Street)	Category B Listed	368036	678782	11	8.8	Regional
24775	27 And 29 High Street (formerly known as 1 and 2 Templelands)	Category B Listed	368008	678781	11	8.8	Regional
24776	31-35 (odd nos.) High Street	Category B Listed	367997	678791	11	8.8	Regional
24777	41 High Street	Category B Listed	367980	678819	11	8.9	Regional
24778	41c High Street (through close)	Category B Listed	367996	678827	11	8.9	Regional
24779	47 And 49 High Street	Category B Listed	367981	678827	11	8.9	Regional
24780	51 And 53 High Street	Category B Listed	367986	678841	11	8.9	Regional
24781	51a High Street (through close)	Category B Listed	367966	678857	11	8.9	Regional
24782	55 And 59 High Street	Category B Listed	367974	678845	11	8.9	Regional
24783	61 And 63 High Street	Category B Listed	367964	678854	11	8.9	Regional
24784	67 High Street	Category B Listed	367972	678876	11	8.9	Regional
24785	69 High Street St George Hotel	Category B Listed	367962	678890	11	8.9	Regional
24787	73 and 75 High Street (Eagle Inn)	Category B Listed	367948	678901	11	8.9	Regional
24789	77 High Street	Category B Listed	367944	678904	11	9.0	Regional
24791	High Street, Mercat Cross	Category B Listed	367923	678912	11	9.0	Regional
24792	97 and 99 High Street	Category B Listed	367927	678962	11	9.0	Regional
24795	137 and 139 High Street	Category B Listed	367911	679047	11	9.1	Regional
24797	High Street, Abbey Church, Retaining Walls and Lamp Standards	Category B Listed	368010	678714	11	8.8	Regional

Site no.	Site name	Status	Easting	Northing	No. of turbine tips theoretically visible (according to ZTV)	Distance to nearest turbine (km)	Sensitivity of receptor
24798	High Street, 1 and 2 Abbeylands	Category B Listed	367982	678732	11	8.8	Regional
24800	High Street, Abbeylands, Bield	Category B Listed	367928	678719	11	8.8	Regional
24801	High Street, Abbeylands, The Priory	Category B Listed	367891	678731	11	8.8	Regional
24803	40 High Street	Category B Listed	367938	678823	11	8.9	Regional
24808	62-66 (even nos.) High Street	Category B Listed	367911	678877	11	8.9	Regional
24810	72 and 74 High Street	Category B Listed	367908	678893	11	8.9	Regional
24811	Building at Rear of 72 High Street through close to north	Category B Listed	367888	678884	11	8.9	Regional
24812	76 High Street	Category B Listed	367903	678898	11	8.9	Regional
24813	80-84 (even nos.) High Street	Category B Listed	367901	678905	11	8.9	Regional
24815	90 and 92 High Street	Category B Listed	367897	678929	11	9.0	Regional
24816	High Street (close through 90 High Street)	Category B Listed	367889	678922	11	9.0	Regional
24817	98 and 100 High Street and 1 West Port	Category B Listed	367881	678953	11	9.0	Regional
24818	High Street Close of 102	Category B Listed	367868	678954	1	9.0	Regional
24819	104 High Street	Category B Listed	367880	678960	11	9.0	Regional
24820	High Street Close of 106	Category B Listed	367865	678970	11	9.0	Regional
24821	106 and 108 High Street	Category B Listed	367881	678968	11	9.0	Regional
24822	110 and 112 High Street	Category B Listed	367825	678977	11	9.0	Regional
24823	High Street Close of 110	Category B Listed	367858	678966	11	9.0	Regional
24824	114 and 116 High Street	Category B Listed	367868	678982	11	9.0	Regional
24825	126 and 128 High Street	Category B Listed	367860	679004	11	9.0	Regional
24828	High Street, St Anne's Church (Episcopal)	Category B Listed	367815	679055	11	9.1	Regional
24830	Knockenhair Road, Knockenhair House, Old Windmill, Lodge and Gatepiers	Category B Listed	366989	678950	11	9.0	Regional
24831	Lamer Island, The Battery	Category B Listed	368112	679348	11	9.4	Regional
24832	15-19 Lamer Street (odd nos.) Warehouse/Workshop	Category B Listed	368031	679151	11	9.2	Regional
24835	Lamer Street Warehouse (Dreadnought)	Category B Listed	368030	679100	11	9.2	Regional
24837	Lawson Place, Baker's Croft (formerly St Anne's Rectory)	Category B Listed	367760	679014	11	9.1	Regional
24838	Marine Road, St Rule's, St Relugas	Category B Listed	367285	679323	11	9.4	Regional
24839	Old Harbour, Quays and Piers (Cromwell Harbour)	Category B Listed	368142	679224	11	9.3	Regional
24840	Old Harbour, Spott's Granary	Category B Listed	368116	679243	11	9.3	Regional
24841	Old Harbour Fishermen's Monument	Category B Listed	368117	679137	11	9.2	Regional
24843	Queen's Road, Parish War Memorial	Category B Listed	368172	678633	11	8.7	Regional
24844	Queen's Road, Hotel Bellevue	Category B Listed	368283	678523	11	8.6	Regional
24845	Queen's Road, 1 and 2 Bowmont Terrace	Category B Listed	368478	678467	11	8.6	Regional
24846	Queen's Road, 3-5 (inclusive nos.) Bowmont Terrace	Category B Listed	368450	678475	11	8.6	Regional
24847	Queen's Road, 6-11 (inclusive nos.) Bowmont Terrace	Category B Listed	368421	678491	11	8.6	Regional
24848	Queen's Road, 12 Bowmont Terrace	Category B Listed	368380	678518	11	8.6	Regional
24849	Roxburghe Terrace, Kirkhill House	Category B Listed	368662	678404	7	8.5	Regional
24850	Roxburghe Terrace, Newhouse Farm Steading and Horsemill	Category B Listed	368543	678394	8	8.5	Regional

Site no.	Site name	Status	Easting	Northing	No. of turbine tips theoretically visible (according to ZTV)	Distance to nearest turbine (km)	Sensitivity of receptor
24851	1 And 3 Shore Street, also known as Old Harbour	Category B Listed	368071	679119	11	9.2	Regional
24853	7 Shore Street, also known as Old Harbour	Category B Listed	368079	679096	11	9.2	Regional
24854	Shore Street, Warehouse	Category B Listed	368040	679111	11	9.2	Regional
24855	2 Silver Street	Category B Listed	367949	678931	11	9.0	Regional
24856	3 Silver Street	Category B Listed	367959	678912	11	9.0	Regional
24857	Station Road, Dunbar Railway Station and Station Lodge	Category B Listed	368090	678483	11	8.5	Regional
24858	Station Road, Lodge (Former Station Lodge)	Category B Listed	368088	678528	11	8.6	Regional
24859	Victoria Harbour, Yellowcraig	Category B Listed	367942	679245	11	9.3	Regional
24860	2-9 (inclusive nos.) Victoria Street	Category B Listed	367895	679110	11	9.2	Regional
24862	12-30 (even nos.) Victoria Street	Category B Listed	367981	679205	11	9.3	Regional
24864	7 West Port	Category B Listed	367845	678936	11	9.0	Regional
24865	9 West Port	Category B Listed	367836	678932	11	9.0	Regional
24866	13 West Port	Category B Listed	367829	678930	11	9.0	Regional
24867	21 West Port	Category B Listed	367827	678928	11	9.0	Regional
26654	23 Brown's Place	Category B Listed	358820	677640	3	9.7	Regional
44906	Cranshaws Farm, Gateway to Stable Courtyard including Gates and Pal Stone	Category B Listed	368252	661843	7	7.2	Regional
51775	1-4 (consecutive nos.) Buncles Court, 30-38 (even nos.) Lamer Street	Category B Listed	368013	679133	11	9.2	Regional
51776	1-6 (consecutive nos.) Harbour Court, Castle Gate	Category B Listed	367962	679224	11	9.3	Regional
51777	3-9 (Odd Nos) Victoria Place	Category B Listed	367992	679225	11	9.3	Regional
51778	15a, 15b, 15c, 15d Victoria Street, 8 Writer's Court including Boundary Walls	Category B Listed	367967	679154	11	9.2	Regional
51779	19a, 19b, 19c Victoria Street, 10 and 12 Writer's Court including Boundary Walls	Category B Listed	367995	679169	11	9.2	Regional
7713	Thurston Mains Farmhouse and Walled Garden	Category C Listed	371022	673048	8	4.3	Local
14761	Halls Farm, Cottage	Category C Listed	365232	672782	4	2.8	Local
14773	Little Spott, 2 -7 (inc.) Little Spott Cottages	Category C Listed	365655	674862	3	4.8	Local

## APPENDIX 11.3 CULTURAL HERITAGE SITES WITH THEORETICAL INTERVISIBILITY ONLY WITH THE DEVELOPMENT

Where it has been established that the setting of an asset is localised such that there is no potential for it to be affected by the presence of the development, the receptor is not considered further in the assessment.

Site no.	Site name	Status	Easting	Northing	No. of turbine tips theoretically visible (according to ZTV data)	Distance to nearest turbine (km)	Sensitivity of receptor	Setting	Contribution of setting	Sensitivity of setting	Impact magnitude	Significance of predicted impact
3769	Townhead of Duncanlaw, enclosure and cross-base, Cross Hill	Scheduled Monument	354944	668217	1	9.7	National	The remains of an enclosed settlement within which is preserved the remains of a cross socket are covered by an area of woodland and cannot be easily appreciated on the ground.	Low	Medium	Imperceptible	Negligible
5761	Pleasants, promontory fort 500m WSW of	Scheduled Monument	365904	675548	3	5.5	National	The remains of this fort are visible only as cropmarks on oblique aerial photographs.	Low	Medium	Imperceptible	Negligible
5762	Hurkletillane, enclosure 250m S of	Scheduled Monument	366169	676030	3	6.1	National	The remains of this enclosure are visible only as cropmarks on oblique aerial photographs, and cannot be appreciated on the ground	Low	Medium	Imperceptible	Negligible
5763	Pleasants, enclosure 100m SE of	Scheduled Monument	366482	675655	1	5.7	National	The remains of this enclosure are visible only as cropmarks on oblique aerial photographs, and cannot be appreciated on the ground	Low	Medium	Imperceptible	Negligible
5765	Doon Hill, enclosure	Scheduled Monument	368592	675340	5	5.5	National	The remains of this enclosure are visible only as cropmarks on oblique aerial photographs, and cannot be appreciated on the ground	Low	Medium	Imperceptible	Negligible
5769	Corsick Hill, enclosure	Scheduled Monument	372489	674323	1	6.2	National	The remains of this enclosure are visible only as cropmarks on oblique aerial photographs, and cannot be appreciated on the ground	Low	Medium	Imperceptible	Negligible
5771	Innerwick Castle, fort and ring ditch	Scheduled Monument	373463	673776	2	6.5	National	The remains of this multi-vallate fort and external ring ditch are visible only as cropmarks on oblique aerial photographs, and cannot be appreciated on the ground	Low	Medium	Imperceptible	Negligible
5836	Easter Broomhouse, promontory fort 400m S of	Scheduled Monument	367926	676367	3	6.4	National	The remains of this bivallate promontory fort are visible only as cropmarks on oblique aerial photographs, and cannot be appreciated on the ground	Low	Medium	Imperceptible	Negligible
5840	Channel Brae, enclosure 200m S of	Scheduled Monument	365046	672950	5	2.9	National	The remains of this enclosed prehistoric settlement are visible only as cropmarks on oblique aerial photographs, and cannot be appreciated on the ground	Low	Medium	Imperceptible	Negligible
5841	Spott Mill, promontory fort	Scheduled Monument	365381	674217	10	4.2	National	The remains of this prehistoric promontory fort are visible only as cropmarks on oblique aerial photographs, and cannot be appreciated on the ground	Low	Medium	Imperceptible	Negligible
5887	Standingstone, enclosure 350m WSW of	Scheduled Monument	357376	673427	3	8.1	National	The enclosure is visible only as cropmarks on oblique aerial photographs, and cannot be appreciated on the ground.	Low	Medium	Imperceptible	Negligible
5895	Thurston, fort 800m NW of	Scheduled Monument	370763	675035	11	5.8	National	The remains of this multi-vallate fort of later prehistoric date are visible only as cropmarks on oblique aerial photographs, and cannot be appreciated on the ground	Low	Medium	Imperceptible	Negligible
5993	West Mains, enclosure 500m WNW of	Scheduled Monument	357103	672557	1	8.0	National	The remains of this enclosed prehistoric settlement are visible only as cropmarks on oblique aerial photographs, and cannot be appreciated on the ground	Low	Medium	Imperceptible	Negligible



Site no.	Site name	Status	Easting	Northing	No. of turbine tips theoretically visible (according to ZTV data)	Distance to nearest turbine (km)	Sensitivity of receptor	Setting	Contribution of setting	Sensitivity of setting	Impact magnitude	Significance of predicted impact
6067	Whittinghame Tower, enclosure 250m SW of	Scheduled Monument	360007	673004	1	5.7	National	The enclosure is visible only as cropmarks on oblique aerial photographs, and cannot be appreciated on the ground.	Low	Medium	Imperceptible	Negligible
6069	Houston Mill, enclosure 200m E of	Scheduled Monument	359621	677648	2	9.3	National	The remains of this enclosed prehistoric settlement are visible only as cropmarks on oblique aerial photographs, and cannot be appreciated on the ground	Low	Medium	Imperceptible	Negligible
6107	Morham Burn, enclosures W of	Scheduled Monument	355433	672310	1	9.5	National	The remains of these two enclosed prehistoric settlements are visible only as cropmarks on oblique aerial photographs, and cannot be appreciated on the ground	Low	Medium	Imperceptible	Negligible
6108	Morham Mains, enclosure 400m S of	Scheduled Monument	355498	671023	1	9.1	National	The remains of this enclosed prehistoric settlement are visible only as cropmarks on oblique aerial photographs, and cannot be appreciated on the ground	Low	Medium	Imperceptible	Negligible
8774	Mainshill, fort 450m NNE of	Scheduled Monument	356509	672628	1	8.6	National	The remains of this prehistoric fort are visible only as cropmarks on oblique aerial photographs, and cannot be appreciated on the ground	Low	Medium	Imperceptible	Negligible
14764	Biel House with Terrace Walls, Chapel Remains, Sundial, Boundary Walls, Gateway, Summer House, Archway, Kennels and Service Court	Category A Listed	363193	675877	11	6.2	National	Biel House is set within its own GDL which provides its setting. Trees of the arboretum within the GDL are likely to screen views of the proposed wind farm.	High	High	Low	Minor
17500	Whittinghame Tower (formerly Whittinghame Castle) with Wellhead and Sundial	Category A Listed	360223	673246	1	5.6	National	Whittinghame Tower is set within its own GDL which provides its setting. Modern agricultural buildings within the vicinity of the tower have somewhat compromised its setting.	High	High	Imperceptible	Negligible
17502	Whittinghame Tower, Pavilion Lodges And Gatepiers (E Lodge Known As Gardener's House)	Category A Listed	360133	673482	1	5.8	National	Localised setting within the Whittinghame GDL.	High (localised)	High (localised)		
	Whittinghame	GDL	360163	672942	1	5.5	National	The gardens of Whittinghame are a good example of W.S.Gilpin's early 19th century landscape design, and provide an impressive setting for the Category A Listed Whittinghame House.  The gardens are surrounded by policy woodlands which restrict views into and out of the GDL. One turbine from the Development will theoretically be visible from approximately a third of the GDL and will not be visible from Whittinghame House.	High	High	Low	Minor

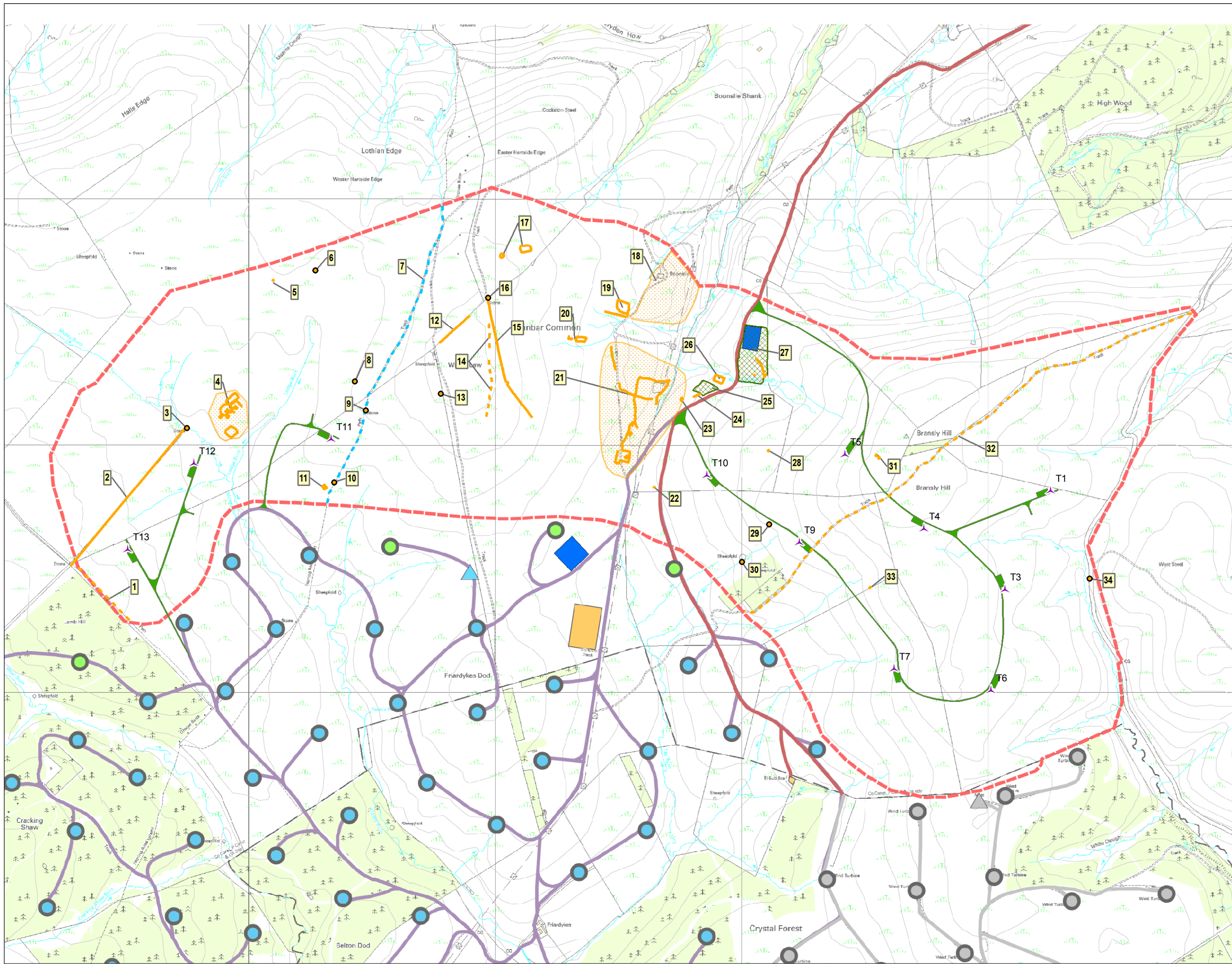


Site no.	Site name	Status	Easting	Northing	No. of turbine tips theoretically visible (according to ZTV data)	Distance to nearest turbine (km)	Sensitivity of receptor	Setting	Contribution of setting	Sensitivity of setting	Impact magnitude	Significance of predicted impact
	Biel	GDL	363389	675556	11	5.8	National	Biel GDL is notable for the terraced gardens, arboretum and outstanding architectural features. At present the existing Crystal Rig I and II and the existing Aikengall I wind farms are theoretically visible from much of the GDL. The proposed Crystal Rig III development only will be theoretically visible from limited areas close to the centre of the designated area.	High	High	Low	Minor
	Dunbar I	Inventory Historic Battlefield	367768	674893	11	4.9	National	For much of the Dunbar I battlefield area the existing Crystal Rig I and II and Aikengall windfarms are already visible. For some limited areas primarily at the southern and central parts of the designated area the proposed Crystal Rig III windfarm would theoretically be visible in isolation. It is considered that the proposed turbines which lie outwith the designated battlefield area would not impair the ability to understand the battle.	Medium	Moderate	Imperceptible	Negligible
7318	Linplum Lodge	Category B Listed	355289	670320	1	9.2	Regional	Localised setting in relation to Linplum House. Only one turbine would theoretically be visible, over 9km away.	High (localised)	Moderate (localised)		
7707	Skateraw Limekiln	Category B Listed	373847	675396	10	7.9	Regional	Localised coastal setting.	High (localised)	Moderate (localised)		
7712	Thurston Jubilee Horse Trough	Category B Listed	371440	673827	5	5.1	Regional	Localised roadside setting Woodland is located to the south-east and will screen views of the proposed development.	Medium (localised)	Moderate (localised)		
14768	Biel Mill, Beech Cottage	Category B Listed	362429	675744	10	6.3	Regional	Localised setting in relation to Biel Mill. Surrounded by trees.	High (localised)	High (localised)		
14784	Spott House with Boundary Walls, Piers, "Chapel" and Game Larder	Category B Listed	367917	675256	7	5.3	Regional	Localised setting within own grounds and in relation to other associated buildings. Trees within the gardens will partially screen views of the proposed turbines. The main elevation of the house faces south-west and turbines will not be visible in the same arc of view as the house.	High (localised)	High (localised)		
14788	Spott House, Stable Court and Groom's House	Category B Listed	367956	675204	9	5.3	Regional	Localised setting in relation to Spott House, and within grounds of Spott House. Trees within the gardens will partially screen views of the proposed turbines. Modern farm buildings to the south have already partially compromised the setting of these buildings.	High (localised)	High (localised)		
17489	Whittingehame House, South Lodge	Category B Listed	360289	672485	2	5.1	Regional	Localised setting in relation to Whittingehame house, and at the south-eastern end of a drive leading to the house.	High (localised)	High (localised)		
17495	Whittingehame Mains Steading with Stalk.	Category B Listed	359571	673760	1	6.5	Regional	Set within area of agricultural land. Only one turbine will theoretically be visible 6.5 km away.	High	High	Imperceptible	Negligible

Site no.	Site name	Status	Easting	Northing	No. of turbine tips theoretically visible (according to ZTV data)	Distance to nearest turbine (km)	Sensitivity of receptor	Setting	Contribution of setting	Sensitivity of setting	Impact magnitude	Significance of predicted impact
17496	Whittingehame Parish Church with Graveyard Walls and Piers	Category B Listed	360312	673665	1	5.8	Regional	Whittingehame Parish Church has a localised setting within its graveyard. It is approached by a tree lined avenue running from north to south. The graveyard is largely surrounded by trees.	High	High (Localised)		
17503	Whittingehame Walled Garden, Summer Pavilion and Gifford Gates with Quadrant Walls and Gatepiers	Category B Listed	360271	673483	1	5.7	Regional	Localised setting within Whittingehame GDL, and in relation to Whittingehame House.	High (localised)	High (localised)		
17515	Papple Steading, West and North Ranges and Stalk	Category B Listed	359085	672481	1	6.1	Regional	Localised setting within surrounding area of agricultural land. Some more modern agricultural buildings and dwellings within the area.	Medium (localised)	Moderate (localised)		
18864	Morham Bank Farmhouse with Walled Garden, Terrace Wall and Piers	Category B Listed	354599	670476	1	10.1	Regional	Localised setting within group of farm buildings. Some modern agricultural buildings have been added to the north-west.	Medium (localised)	Moderate (localised)		
18868	The Old Manse	Category B Listed	355592	672513	5	9.4	Regional	Localised setting within own gardens and in relation to the church.	High (localised)	High (localised)		







- Key**
- Site Boundary
  - Turbine Location
  - Tracks and Cranespads
  - Construction Compounds
  - Cultural Heritage Site (point)
  - Cultural Heritage Site (linear)
  - Trackway
  - The Herring Road
  - Cultural Heritage Site (area)
  - Rig and Furrow

**CFA** ARCHAEOLOGY LTD  
 The Old Engine House  
 Eskmills Park, Musselburgh  
 East Lothian, EH21 7PQ  
 T: 0131 273 4380  
 F: 0131 273 4381  
 e: info@cfa-archaeology.co.uk  
 w: www.cfa-archaeology.co.uk

Fig. No	7.1	Revision	
---------	-----	----------	--

Title  
**Cultural Heritage: Constraints**

Project  
**Crystal Rig Wind Farm (Phase III)**

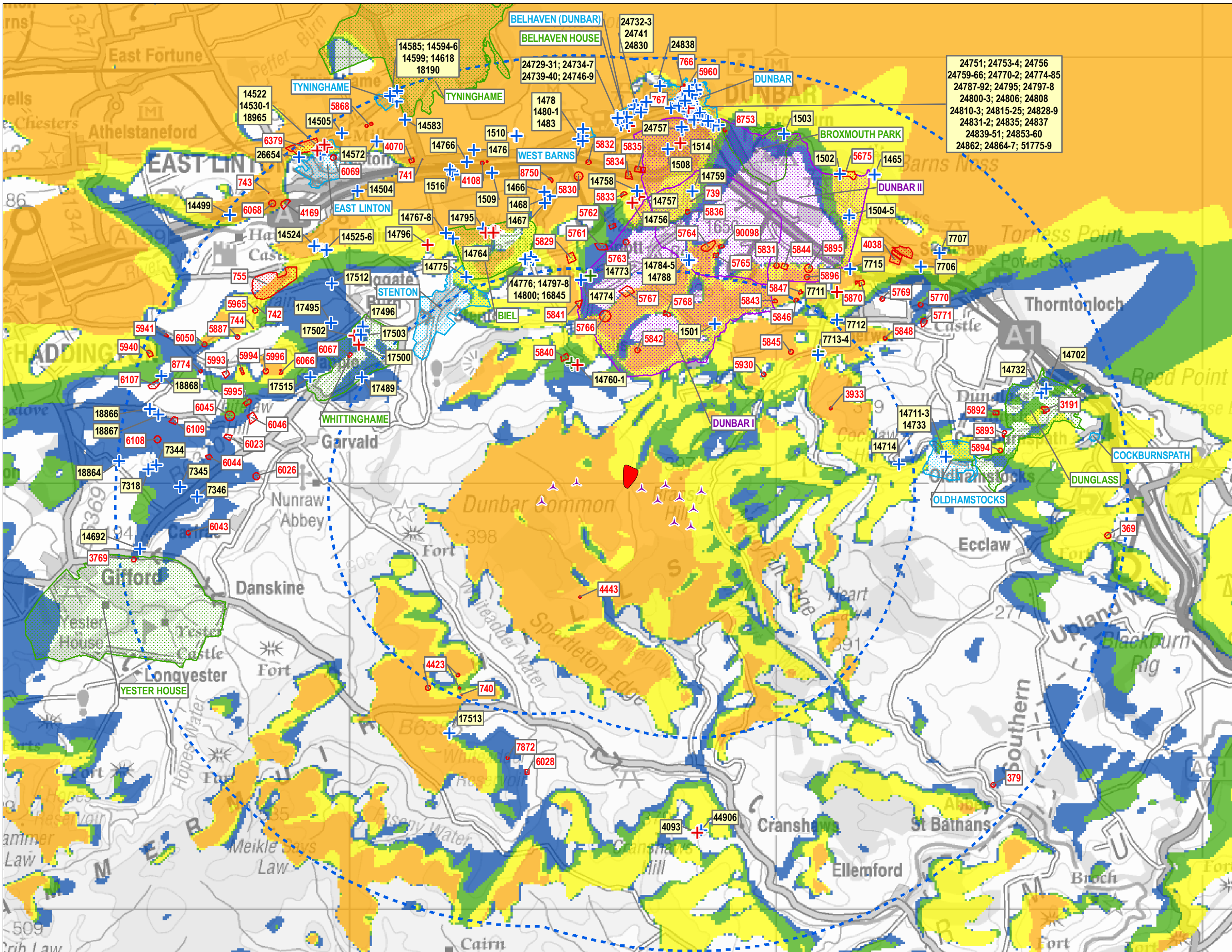
Scale at A3  
**1:14,000**

Client  
**Natural Power**

The copyright in this document (including its electronic form) shall remain vested in CFA Archaeology Ltd (CFA) but the Client shall have a licence to copy and use the document for the purpose for which it was provided. CFA shall not be liable for the use by any person of this document for any purpose other than that for which the same was provided by CFA. This document shall not be reproduced in whole or in part or relied upon by third parties for any use whatsoever without the express written authority of CFA.

Reproduced with the permission of Ordnance Survey on behalf of The Controller of Her Majesty's Stationery Office, © Crown copyright. CFA Archaeology Ltd, Old Engine House, Eskmills Park, Musselburgh EH21 7PQ AL100034785





- Key**
- Turbine Location
  - 5km and 10km Buffer
  - Scheduled Monument
  - Listed Building Category A
  - Listed Building Category B
  - Listed Building Category C
  - Conservation Area
  - Garden and Designed Landscape
  - Inventory Historic Battlefield
  - Candidate Site for Scheduling

- Theoretical visibility of turbines to tip height:**
- 1 - 3 turbines
  - 4 - 6 turbines
  - 7 - 9 turbines
  - 10 - 11 turbines

**CFA** ARCHAEOLOGY LTD  
 CFA ARCHAEOLOGY LTD  
 The Old Engine House  
 Eskmills Park, Musselburgh  
 East Lothian, EH21 7PQ  
 T: 0131 273 4380  
 F: 0131 273 4381  
 e: info@cfa-archaeology.co.uk  
 w: www.cfa-archaeology.co.uk

Fig. No	7.2	Revision	
---------	-----	----------	--

Title  
**Cultural Heritage: External Receptors and ZTV**

Project  
**Crystal Rig Wind Farm (Phase III)**

Scale at A3  
**1:80,444**

Client  
**Natural Power**

Drawn by:	Checked by:	Report No:
SW	HT	

The copyright in this document (including its electronic form) shall remain vested in CFA Archaeology Ltd (CFA) but the Client shall have a licence to copy and use the document for the purpose for which it was provided. CFA shall not be liable for the use by any person of this document for any purpose other than that for which the same was provided by CFA. This document shall not be reproduced in whole or in part or relied upon by third parties for any use whatsoever without the express written authority of CFA.

Reproduced with the permission of Ordnance Survey on behalf of The Controller of Her Majesty's Stationery Office, © Crown copyright. CFA Archaeology Ltd, Old Engine House, Eskmills Park, Musselburgh EH21 7PQ AL100034785