

# CFA Archaeology Ltd

archaeological consultants

*Advice on Archaeology & Planning*

*Environmental Impact Assessment*

*Intpretation, Design & Display*

*Finds/ Environmental Analysis*

*Field Evaluation & Excavation*

*Historic Building Recording*

*Site & Landscape Survey*

*Geophysical Survey*

**Dubton Farm, Brechin,  
Angus**

**Archaeological Evaluation**

**Report No. 1849**

## **CFA ARCHAEOLOGY LTD**

The Old Engine House  
Eskmills Business Park  
Musselburgh  
East Lothian  
EH21 7PQ

Tel: 0131 273 4380

Fax: 0131 273 4381

email: [info@cfa-archaeology.co.uk](mailto:info@cfa-archaeology.co.uk)

web: [www.cfa-archaeology.co.uk](http://www.cfa-archaeology.co.uk)

Author	Phil Moore BA
Illustrator	Graeme Carruthers BA MAAIS
Editor	Melanie Johnson MA PhD FSA Scot MIfA
Commissioned by	Scotia Homes (North) Ltd
Date issued	January 2011
Version	1
OASIS Reference	cfaarcha1 - 89636
Planning Application No	09/00675/FUL
Grid Ref	NO 586 606
Parish / County	Brechin / Angus

This document has been prepared in accordance with CFA Archaeology Ltd standard operating procedures.

**Dubton Farm, Brechin,  
Angus**

**Archaeological Evaluation**

**Report No. 1849**

## **CONTENTS**

1.	Introduction	3
2.	Working Methods	4
3.	Archaeological Results	5
4.	Summary and Conclusions	9
5.	Bibliography	10

## **Appendices**

1.	Evaluation Trench Summary	11
2.	Context Register	14
3.	Photographic Register	16
4.	Drawings Register	19
5.	Sample Register	19
6.	Discovery and Excavation in Scotland Entry	20

## **Illustrations (bound at rear)**

Fig. 1 Site location and trench plan

Fig. 2 Trench plan and feature location

Fig. 3 Roundhouse, souterrain and associated features, Trench 26B/27B

Fig. 4 Remains of probable prehistoric structure, Trench 38B

Fig. 5 General view of souterrain and other features in Trench 26B/27B

Fig. 6 Section through souterrain (050)

Fig. 7 Example of cultivation furrow Trench 25A

Fig. 8 Example of modern made ground Trench 26A

## **1. INTRODUCTION**

### **1.1 General**

1.1.1 This report presents the results of an archaeological evaluation undertaken by CFA Archaeology Ltd (CFA) in November 2010 on the site of a proposed residential development at Dubton Farm, Brechin, Angus (NGR: NO 586 606, Fig. 1). The project was commissioned by Scotia Homes (North) Ltd.

1.1.2 A Written Scheme of Investigation (WSI) was produced by CFA based upon documents supplied by Scotia Homes Ltd. The WSI was approved by the Archaeological Advisor to Angus Council prior to the fieldwork.

1.1.3 Work was undertaken in line with the advice in SPP and PAN42.

### **1.2 Archaeological Background**

1.2.1 To the west of the development site an area of cropmarks visible on aerial photographs were excavated by CFA in advance of development in 1999 (Cameron 2002). A suite of archaeological features, representing a number of different phases of Neolithic and Iron Age origin, were identified. Many more substantial features were of early Neolithic date. At least six clusters of pits with charcoal-rich fills were recorded containing pottery and carbonised plant remains. Nine very large, deep and stratigraphically complex pits were identified cut into the gravel ridge, from which a considerable amount of Neolithic pottery was retrieved. Four Iron Age souterrains were identified and fully excavated: two produced fragments of rotary quern and large quantities of charcoal and charred timber. All of the souterrains were small in size. They were cut into soft subsoil but retained a vertical sided profile that suggests they had been timber-lined and rapidly backfilled. A number of adjacent features may represent above ground timber structures associated with the souterrains.

### **1.3 Aims and Objectives**

1.3.1 The objectives of the programme of archaeological works were:

- To establish the presence/absence, extent, condition, character, quality and date of any archaeological features or deposits within the proposed development area
- To establish their vulnerability to the proposed development
- And to propose mitigation measures.

## **2. WORKING METHODS**

### **2.1 General**

2.1.1 CFA Archaeology Ltd follows the Institute for Archaeologists' Code of Conduct, Standards and Guidance for Archaeological Evaluations.

### **2.2 Trial Trenching**

2.2.1 A trial trenching evaluation was required of the Phase 1 development area including the SUDS area, which together measure 12.1ha. A 7% evaluation (8470m<sup>2</sup>) of the area was required, by means of a distributed trial trenching strategy.

2.2.2 All trenches were excavated by tracked mechanical excavator fitted with a toothless ditching bucket. All machine work was undertaken under direct archaeological supervision to remove topsoil and modern deposits down to subsoil or the first significant archaeological horizon, whichever was reached first. Any further excavation required to fulfil the objectives of the evaluation was carried out by hand.

2.2.3 The stratification of all trenches was recorded, whether or not significant archaeological deposits were identified.

2.2.4 Trench locations were recorded using DGPS surveying equipment and the trenches were backfilled on completion of recording.

### 3. ARCHAEOLOGICAL RESULTS

#### 3.1 General

- 3.1.1 A summary of all the trenches excavated is contained in Appendix 1. Numbers in bold and parentheses refer to context numbers, a full list of which is available in Appendix 2.
- 3.1.2 Ninety-five trenches were excavated, covering 8370m<sup>2</sup> (not including all of the boxed out extensions to trenches) (Fig. 1-2).
- 3.1.3 The site is divided into two fields (Fig. 2). Field A lies to the north of the farm access track running approximately E-W. Field B lies to the south of the farm access track and included the SUDS area. Field A was pasture and Field B was arable (stubble field). Field A gently sloped towards the south-east. Field B sloped southwards from the access track before rising to an east-west orientated crest opposite Dubton Farm. From here, the land sloped south to south-east towards the SUDS area, which itself was relatively flat.
- 3.1.4 Trenches excavated within Field A are given the suffix 'A', eg Trench 13A, while those excavated within Field B are given the suffix 'B', eg Trench 13B.
- 3.1.5 Topsoil (**001**) across the area was generally 0.3-0.5m deep. In Field A there were considerable depths of modern made ground and local information suggests that this field was previously stripped of topsoil and was the site of a concrete batching plant during construction of the A90. In a number of trenches, modern debris such as plastic, bricks, metal, 'terram' and Type 1 hardcore were recorded up to 1.2m in depth (Fig. 8). The natural substrate (**000**) beneath this made ground contained field drains, while plough scores and/or machine teeth marks were visible striating the natural. This suggests that there was considerable disturbance in this area and confirms the suggestion that this field had formerly been stripped. In Field A a 19th century sand quarry is known to have existed in the eastern corner of the field.
- 3.1.6 In Field B there was generally shallower topsoil (**001**) and little evidence of made ground apart from along the edge of the farm track. Natural substrate (**000**) was typically sandy gravels, either mid-orange or reddish-pink in colour, with bands of cleaner sand. Stone cobbles were common while large boulders were rare. Red sandstone was encountered, particularly to the south and east. A subsoil (**022**) was recorded in one of the trenches in Field B (Trench 16B). This was a dark grey silt and was up to 0.3m thick.
- 3.1.7 The fields were crossed by an overhead electricity cable, buried street lighting cables and water pipes. Appropriate no-dig buffer zones were put in place around these.

## 3.2 Trial Trenching

3.2.1 A summary of the trenches is contained in Appendix 1. Only those trenches containing archaeological features are described in full below.

3.2.2 Rig-and-furrow cultivation remains were found across much of the site, generally aligned NW-SE and with furrows measuring between 1m and 2m wide by up to 0.15m deep (Fig. 7).

### *Trench 1A*

3.2.3 A single pit (**003**) was recorded towards the centre of the trench and half-sectioned. This pit measured 0.55m across by 0.1m deep and was filled by a reddish-grey silt (**004**) and lenses of re-deposited natural.

### *Trench 1B*

3.2.4 An elongated pit (**009**) measuring 1.7m by 1m by 0.35m deep, with sloping sides and a flat base, was recorded and half-sectioned. It was filled with a sterile basal fill (**010**) of grey silty sand with some re-deposited natural, 0.20m thick. Two further fills of grey silty sand (**016, 017**), each less than 0.1m thick, were present, which were overlain by a light grey silty sand (**041**) of thickness 0.25m. This latter fill appeared to contain charcoal.

### *Trench 4B*

3.2.5 A sub-circular pit (**005**) was recorded and half-sectioned, measuring 0.8m across by 0.25m deep with irregular sides. It was filled by a stony fill of mid pinkish-grey loose silt (**006**).

### *Trench 5B*

3.2.6 A large, shallow oval pit (**007**) with sloping sides was recorded and half-sectioned. It measured 2m by 1.6m by 0.14m deep. It was filled with a mid grey loose silt (**008**).

3.2.7 A small pit (**011**) was recorded and half-sectioned, with vertical sides and a flat base, measuring 0.55m across by 0.2m deep. It contained possible packing stones (**012**) within the fill of dark grey sandy silt (**013**).

3.2.8 A further shallow pit (**014**) was recorded and half-sectioned, measuring 0.65m across by 0.1m deep. It was filled by a mid grey silt (**015**).

### *Trench 8B*

3.2.9 A linear feature (**020**) was recorded running NW-SE, with moderately steep sides. It measured 1m long by 0.7m wide within the trench, and was 0.35m deep. It terminated within the trench to the south-east. It was filled by mottled grey/red silty sand with occasional small stones (**021**).

#### *Trench 13B*

- 3.2.10 A shallow gully (**027**) was recorded, measuring 1.6m long by 0.7m wide within the trench. It had sloping sides and was 0.15m deep. It was filled by a light grey silty sand (**028**).

#### *Trench 14B*

- 3.2.11 A linear feature (**018**) was recorded, aligned NNE-SSW and measuring 2m long by 0.9m wide within the trench. It was shallow, at 0.15m deep, with slightly concave sides and base. It was filled by a loose mid grey silt (**019**).

#### *Trench 16B*

- 3.2.12 A sub-rectangular shallow pit (**023**) was recorded and half-sectioned, measuring 1.5m long by 0.5m wide by 0.1m deep. It was filled with a mid grey silt (**024**).

#### *Trench 17B*

- 3.2.13 A shallow circular pit (**025**), measuring 0.75m across and 0.1m deep, was recorded and half-sectioned. It had an undulating base and was filled with a mid grey silt (**026**).

#### *Trench 26B / 27B (Fig. 3, 5-6)*

- 3.2.14 The southern ends of these trenches were extended to expose a suite of features forming a souterrain (**050**) associated with a post-built roundhouse. The roundhouse comprised an arc of 7 postholes (**071-077**) lying on the inside edge of the souterrain. A number of other possible postholes in the area (eg **086**) may represent the rest of the structure, which could measure approximately 10m in diameter. A number of other larger pits (**031, 033, 079, 083, 088**) were also found in association.
- 3.2.15 Two of the pits were half-sectioned (**031, 033**), the rest remain unexcavated. Pit **031** was roughly circular and measured 0.9m across by 0.27m deep and was cut into sandstone bedrock. It contained a fill of dark grey silty sand (**032**) which appeared to contain flecks of burnt bone and charcoal.
- 3.2.16 Pit **033** was sub-circular and measured 1.55m by 1.65m by 0.52m deep, with steep sides. It contained a primary fill of silvery grey sand (**034**), representing the weathered primary fill, at 0.03m thick. Above this was a mid-dark grey silt (**042**) at 0.2m thick, and above this was a thin band of dark grey silty sand (**043**). Above this was a 0.08m thick fill of orange silty sand (**044**) representing re-deposited natural, with the upper fill being a 0.42m thick deposit of dark grey sandy silt (**045**). Pieces of charcoal were recovered from **045**.
- 3.2.17 The souterrain measured 9m from tip to tip and was 1.6m wide. The southern end was thinner than the northern end. A section was excavated across the



southern (050) and it was found to be 1.6m wide by at least 1.5m deep. The base was not reached due to the ingress of ground water. It had vertical sides. It was cut through compacted natural sands and gravels. It was filled with a sequence of deposits (051) comprising bands of silts and sands with lenses of darker grey charcoal-rich material. It was cut by a field drain to the north.

- 3.2.18 Two linear features (039, 087) extended to the NW of the southern. These were irregular in plan, with 039 measuring 4m long and 087 measuring 17m long. A section was excavated through 039 when it was first uncovered while excavating T25B. The feature measured 0.6m wide within the trench and was 0.15m deep. It had sloping sides and a concave base and was truncated on its west side by a large field drain. It was filled by a mid grey silt (040). This feature in Trench 25B is possibly the vestigial remains of linear 087 which was unexcavated. The function or date of both features remains unclear.

#### *Trench 31B*

- 3.2.19 An elongated pit (029) measuring 1.85m long by 0.6m wide and 0.23m deep was recorded and half-sectioned. It had irregular sides and base and was filled by a mid grey loose silt (030).
- 3.2.20 A second pit (035), measuring 1.5m by 1.2m by 0.4m deep, was recorded and half-sectioned. This was sub-circular with steep sides. It was filled with mid grey clayey silt (036) containing abundant stones.

#### *Trench 33B*

- 3.2.21 A circular pit (037) was recorded and half-sectioned. It measured 0.4m across by 0.17m deep. It was filled by a mid grey silt (038).

#### *Trench 38B (Fig. 4)*

- 3.2.22 A post-built roundhouse was identified in this trench, comprising a ring of at least 9 postholes (046, 048, 056-061, 063), of which two were half-sectioned (046, 048). The rest remain unexcavated. The ring had an overall diameter of 6m. Three other postholes (064-066) may be associated with this structure.
- 3.2.23 Posthole 046 was 0.4m across and 0.38m deep, with steep sides and a slightly concave base. It was cut into sandstone bedrock. It was filled with a mid orange-brown sandy silt (047). Posthole 048 was 0.35m in diameter and just 0.09m deep. It was filled by orange-brown sandy silt (049).
- 3.2.24 Two elongated features (062, 067) lie on the NW side of the structure. These may be internal pit features or be the remains of a structural element such as a ring groove. These were unexcavated.

#### *Trench 53B*

- 3.2.25 One small pit (052) was recorded and sectioned. It measured 1m across by 0.2m deep. It was filled with a stony silt deposit (053).

### *Trench 54B*

- 3.2.26 One small pit (**068**) was recorded and sectioned. It measured 1.1m across by 0.16m deep. It had two fills. The lower (**070**) was a black organic-rich silt while the upper was a mid brown sandy silt (**069**).

## **4. SUMMARY & CONCLUSIONS**

- 4.1 An archaeological evaluation by trial trenching was carried out at Dubton Farm, comprising the excavation of 95 trenches covering 5370m<sup>2</sup> (not including boxed out extensions to trenches) or 7% of the Phase 1 development area and SUDS.
- 4.2 A scatter of generally shallow pits and linear features was recorded. Rig-and-furrow cultivation furrows were also recorded across parts of the site, generally aligned NW-SE.
- 4.3 Two suites of archaeological remains were exposed and tested. The first of these, in Trench 38B, comprises the remains of a post-built roundhouse with a diameter of 6m. Post built roundhouses can date from the Neolithic to the Iron Age. Such timber structures probably consisted of a circle of timber uprights that supported rafters, without having a central post. The rafters would have supported the weight of a pitched roof, with an outer wall running concentrically with the post-ring. The outer wall may have been turf or even stone, and would not often survive in the archaeological record; its overall diameter is likely to have been about 10-11m. Comparable structures which share the dimensions have been dated to the Middle Bronze Age through to the Iron Age; in Angus, such structures have been dated to the latter half of the first millennium BC and the early centuries AD (Dunwell and Ralston 2008). Similar post-ring structures were excavated at Dalladies, Kincardineshire (Watkins 1980a) and date to the Iron Age.
- 4.4 The second suite of features, at the south end of Trenches 26B & 27B, comprises the remains of a souterrain with associated post-built roundhouse. The souterrain, a curved underground passage dating to the Iron Age, appears to follow the curve of an arc of pits along its inner edge, which is likely to be the remains of a timber built roundhouse with which the souterrain was associated; the souterrain's entrance could have lain inside the roundhouse or just under its eaves. The association of souterrains with roundhouses is common. They can be stone lined (eg at Newmill, Perthshire; Watkins 1980b) or timber lined (eg Redcastle, Angus; Alexander 2005) and can have ancillary passages. There is much debate regarding the function of souterrains but they seem to have a floruit of use in the first three centuries AD, are most numerous in the E and NE of Scotland, and are often found to have been deliberately backfilled. A range of souterrains and mini-souterrains were found at the neighbouring excavation site at Brechin Business Park (Cameron 2002).
- 4.5 A strategy for further mitigation will be developed in consultation with the Archaeological Advisor to Angus Council.

- 4.6 The project archive, comprising all CFA record sheets, maps and reports, will be deposited with the National Monuments Record of Scotland (NMRS) and copies of reports will be lodged with the Angus Council Sites and Monuments Record. A *Discovery and Excavation in Scotland* entry (Appendix 6) and an OASIS Scotland entry will be completed for the project.

## 5. BIBLIOGRAPHY

Alexander, D 2005 'Redcastle, Lunan Bay, Angus: the excavation of an Iron Age timber-lined souterrain and a Pictish barrow cemetery', *Proc Soc Antiq Scot* 135, 41-118.

Badger, S 2005 *Proposed Development, Dubton, Brechin, Angus Desk-based Assessment*. CFA unpublished Report 1029.

Cameron, K 2002 'The Excavation of Neolithic pits and Iron Age souterrains at Dubton Farm, Brechin, Angus' *Tayside and Fife Archaeological Journal* Vol.8 (2002), 19-76.

Dunwell, A and Ralston, I B M 2008 *Archaeology and Early History of Angus*, Gloucestershire: Tempus, Stroud.

Watkins, T 1980a 'Excavation of an Iron Age open settlement at Dalladies, Kincardineshire', *Proc Soc Antiq Scot* 110, 122-64.

Watkins, T 1980b 'Excavation of a settlement and souterrain at Newmill, near Bankfoot, Perthshire', *Proc Soc Antiq Scot* 110, 165-208.

## APPENDIX 1: Evaluation Trench Summary

Trench No.	Field	Dimensions (m)	Total Area (m2)	Topsoil/subsoil depth (m)	Comments
1A	A	1.8 x 50	90	0.3-1	Pit (003). Field drains
2A	A	1.8 x 50	90	0.55-0.8	Field drains
3A	A	1.8 x 50	90	0.7-1.2	Dead utility service cable
4A	A	1.8 x 50	90	0.8-1.2	
5A	A	1.8 x 30	54	0.5	
6A	A	1.8 x 50	90	0.5	
7A	A	1.8 x 50	90	0.8	Linear feature
8A	A	1.8 x 50	90	0.5	Linear feature
9A	A	1.8 x 40	72	0.5	
10A	A	1.8 x 50	90	0.5	Intermittent rig-and-furrow
11A	A	1.8 x 50	90	0.6	
12A	A	1.8 x 50	90	0.7-1.25	
13A	A	1.8 x 50	90	0.6	Rig-and-furrow
14A	A	1.8 x 50	90	0.5	Rig-and-furrow
15A	A	1.8 x 50	90	0.3-0.5	Rig-and-furrow
16A	A	1.8 x 50	90	0.3-1	Rig-and-furrow
17A	A	1.8 x 50	90	0.3-0.9	Rig-and-furrow
18A	A	1.8 x 50	90	0.5-1	
19A	A	1.8 x 50	90	1.1	
20A	A	1.8 x 50	90	0.65	Rig-and-furrow
21A	A	1.8 x 50	90	0.8	Rig-and-furrow. Modern disturbance and field drains
22A	A	1.8 x 50	90	0.3-0.5	
23A	A	1.8 x 50	90	0.8	
24A	A	1.8 x 50	90	0.8-1	
25A	A	1.8 x 50	90	0.25-0.5	Rig-and-furrow. Modern disturbance at W end
26A	A	1.8 x 50	90	0.25-0.45	Rig-and-furrow
27A	A	1.8 x 50	90	0.4-1	Modern disturbance
28A	A	1.8 x 50	90	0.5	Rig-and-furrow. Modern disturbance at SW end
29A	A	1.8 x 50	90	0.7	
30A	A	1.8 x 50	90	0.5	
31A	A	1.8 x 50	90	0.4-2.5	Modern disturbance
32A	A	1.8 x 50	90	0.6	
1B	B	1.8 x 50	90	0.6 / 0.6	Pit (009)
2B	B	1.8 x 50	90	0.7	
3B	B	1.8 x 50	90	0.6	Rig-and-furrow
4B	B	1.8 x 50	90	0.6 / 0/3	Pit (005)
5B	B	1.8 x 50	90	0.5	Pits (011) (007)
6B	B	1.8 x 50	90	0.5	
7B	B	1.8 x 50	90	0.5	Rig-and-furrow
8B	B	1.8 x 50	90	0.3 / 0.2	Linear feature (020)
9B	B	1.8 x 50	90	0.4 / 0.2	Rig-and-furrow
10B	B	1.8 x 50	90	0.35 / 0.15	Rig-and-furrow
11B	B	1.8 x 50	90	0.5	
12B	B	1.8 x 50	90	0.35 / 0.5	Field drains
13B	B	1.8 x 50	90	0.4	Gully (027)
14B	B	1.8 x 50	90	0.5	Linear Feature (018). Field

Trench No.	Field	Dimensions (m)	Total Area (m2)	Topsoil/subsoil depth (m)	Comments
					drains
15B	B	1.8 x 50	90	0.35 / 0.9	Field drains
16B	B	1.8 x 50	90	0.3 / 0.5	Pit (023). Deposit (022) up to 0.3m deep
17B	B	1.8 x 50	90	0.4	Pit (025). Field drains
18B	B	1.8 x 25	45	0.4	
19B	B	1.8 x 50	90	0.6	
20B	B	1.8 x 50	90	0.45	
21B	B	1.8 x 50	90	0.4	
22B	B	1.8 x 50	90	0.45	
23B	B	1.8 x 50	90	0.35	Field drains
24B	B	1.8 x 50	90	0.5 / 0.3	Field drains
25B	B	1.8 x 50	90	0.6 / 0.4	Field drains
26B	B	1.8 x 50	90	0.4	Souterrain and post-built roundhouse
27B	B	1.8 x 50	90	0.4	Field drains
28B	B	1.8 x 50	90	0.5 / 0.8	Field drains
29B	B	1.8 x 50	90	0.5 / 0.3	Field drains
30B	B	1.8 x 50	90	0.5	Field drains
31B	B	1.8 x 55	99	0.6	Pit (029) and (035) . Field drains
32B	B	1.8 x 50	90	0.7-1	
33B	B	1.8 x 50	90	0.5	Pit (037) and linear feature (039)
34B	B	1.8 x 50	90	0.5	Modern stone holes
35B	B	1.8 x 50	90	0.5	
36B	B	1.8 x 50	90	0.4	Field drains
37B	B	1.8 x 50	90	0.4	Field drains
38B	B	1.8 x 50	90	0.5	Post-built roundhouse
39B	B	1.8 x 50	90	0.5	Rig-and-furrow
40B	B	1.8 x 50	90	0.7	Rig-and-furrow
41B	B	1.8 x 50	90	0.7	Rig-and-furrow
42B	B	1.8 x 50	90	0.7	Rig-and-furrow
43B	B	1.8 x 50	90	0.4-0.5	
44B	B	1.8 x 50	90	0.4	
45B	B	1.8 x 50	90	0.4	
46B	B	1.8 x 50	90	0.4	
47B	B	1.8 x 25	45	0.4	
48B	B	1.8 x 50	90	0.4-0.7	Rig-and-furrow
49B	B	1.8 x 50	90	0.5-0.6	Rig-and-furrow
50B	B	1.8 x 50	90	0.5	Rig-and-furrow
51B	B	1.8 x 50	90	0.4	Rig-and-furrow
52B	B	1.8 x 50	90	0.4	Rig-and-furrow/field boundary
53B	B	1.8 x 50	90	0.4	Pit (052)
54B	B	1.8 x 50	90	0.4	Pit (068). Rig-and-furrow/field boundary
55B	B	1.8 x 50	90	0.4	Rig-and-furrow/field boundary
56B	B	1.8 x 50	90	0.4	Rig-and-furrow/field boundary
57B	B	1.8 x 50	90	0.4	Rig-and-furrow/field

<b>Trench No.</b>	<b>Field</b>	<b>Dimensions (m)</b>	<b>Total Area (m2)</b>	<b>Topsoil/subsoil depth (m)</b>	<b>Comments</b>
					boundary
58B	B	1.8 x 50	90	0.4	Rig-and-furrow/field boundary
59B	B	1.8 x 50	90	0.4	Rig-and-furrow/field boundary
60B	B	1.8 x 50	90	0.4	Rig-and-furrow/field boundary
61B	B	1.8 x 50	90	0.4	
62B	B	1.8 x 25	45	0.4	
63B	B	1.8 x 50	90	0.4	

## APPENDIX 2: Context Register

Context no.	Trench	Fill of	Type	Description
000	All	-	Deposit	Natural substrate
001	All	-	Deposit	Topsoil
002	All	-	Deposit	B-horizon subsoil
003	1A		Cut	Cut of shallow pit
004	1A	003	Deposit	Fill of shallow pit (003)
005	4B		Cut	Cut of shallow pit
006	4B	005	Deposit	Fill of shallow pit (005)
007	5B		Cut	Cut of large shallow pit
008	5B	007	Deposit	Fill of large shallow pit (007)
009	1B		Cut	Cut of Pit
010	1B	009	Deposit	Primary fill of pit (009)
011	5B		Cut	Cut of pit/possible post hole
012	5B	011	Deposit	Packing stones within fill (013) of pit/possible post hole
013	5B	011	Deposit	Fill of pit/possible post hole (011)
014	5B		Cut	Cut of very shallow possible pit
015	5B		Deposit	Mid-grey silty fill of shallow pit
016	1B	009	Deposit	Mid-grey silty-sand fill of pit (009)
017	1B	009	Deposit	Dark-greyish silty-sandy fill of pit (009)
018	14B		Cut	Cut of truncated linear feature/possible gully in Tr14B
019	14B	019	Deposit	Single fill of truncated linear feature/possible gully (019) in Tr14B
020	8B		Cut	Cut of linear feature in Tr8B
021	8B	021	Deposit	Mid-greyish silty-sandy fill of linear feature (021)
022	16B		Deposit	Buried subsoil under B-horizon (002), covers modern plough marks
023	16B		Cut	Cut of elongated sub-rectangular pit
024	16B	023	Deposit	Mid-grey silty fill of elongated pit (023)
025	17B		Cut	Cut of shallow circular pit in Tr17B
026	17B	025	Deposit	Silty mid-grey fill of pit (025) in Tr17B
027	13B		Cut	Cut of shallow, probably truncated gully
028	13B	027	Deposit	Light-grey silty-sandy fill of truncated gully (027)
029	31B		Cut	Narrow cut of elongated pit in Tr31B
030	31B	029	Deposit	Single fill of pit (029) in Tr31B
031	26B		Cut	Cut of pit within sandstone bedrock; part of Feature 1, associated with roundhouse area
032	26B	031	Deposit	Fill of pit (031) associated with Feature 1 probable roundhouse
033	26B		Cut	Cut of large sub-circular pit associated with Feature 1 probable roundhouse
034	26B	033	Deposit	Primary sandy/mica fill of pit (033)
035	31B		Cut	Cut of large sub-circular pit
036	31B	035	Deposit	Mid-grey clayey-silt fill of large sub-circular pit (035)
037	33B		Cut	Cut of shallow pit/possible posthole
038	33B	037	Deposit	Sterile and homogenous fill of (037)
039	25B		Cut	Cut of truncated curvilinear gully/ditch.
040	25B	039	Deposit	Sterile and homogenous fill of (039)
041	1B	009	Deposit	Upper fill of pit (009)
042	26B	033	Deposit	Secondary fill of large pit (033) in Tr26B
043	26B	033	Deposit	Dark grey silty fill of pit (033)

<b>Context no.</b>	<b>Trench</b>	<b>Fill of</b>	<b>Type</b>	<b>Description</b>
044	26B	033	Deposit	Orangey fill of re-deposited natural material in pit (033)
045	26B	033	Deposit	Upper sandy-silt fill of pit (033)
046	38B		Cut	Cut of post-hole associated with Feature 2
047	38B	046	Deposit	Fill of post-hole (046)
048	38B		Cut	Cut of truncated post-hole associated with Feature 2
049	38B	048	Deposit	Fill of post-hole (048)
050	26B ext		Cut	Cut of souterrain forming part of Feature 1, associated with roundhouse
051	26B ext	050	Deposit	Sequence of deposits within souterrain (050), mixed banding of charcoal
052	53B		Cut	Cut of roughly circular pit in Tr53B extension
053	53B	052	Deposit	Fill of pit (052)
054	26B		Cut	Cut of post-hole associated with Feature 1
055	26B	054	Deposit	Fill of post-hole (054)
056	38B		Cut	Cut of post-hole associated with Feature 2 (Unexcavated)
057	38B		Cut	Cut of post-hole associated with Feature 2 (Unexcavated)
058	38B		Cut	Cut of post-hole associated with Feature 2 (Unexcavated)
059	38B		Cut	Cut of post-hole associated with Feature 2 (Unexcavated)
060	38B		Cut	Cut of post-hole associated with Feature 2 (Unexcavated)
061	38B		Cut	Cut of post-hole associated with Feature 2 (Unexcavated)
062	38B		Cut	Cut of linear feature associated with Feature 2 (Unexcavated)
063	38B		Cut	Cut of post-hole associated with Feature 2 (Unexcavated)
064	38B		Cut	Cut of post-hole associated with Feature 2 (Unexcavated)
065	38B		Cut	Cut of post-hole associated with Feature 2 (Unexcavated)
066	38B		Cut	Cut of post-hole associated with Feature 2 (Unexcavated)
067	38B		Cut	Cut of linear feature associated with Feature 2 (Unexcavated)
068	54B		Cut	Cut of small pit
069	54B	068	Deposit	Upper fill of pit (068)
070	54B	068	Deposit	Lower fill of pit (068)
071	26B		Cut	Cut of post-hole associated with Feature 1 (Unexcavated)
072	26B		Cut	Cut of post-hole associated with Feature 1 (Unexcavated)
073	26B		Cut	Cut of post-hole associated with Feature 1 (Unexcavated)
074	26B		Cut	Cut of post-hole associated with Feature 1 (Unexcavated)
075	26B		Cut	Cut of post-hole associated with Feature 1 (Unexcavated)
076	26B		Cut	Cut of post-hole associated with Feature 1 (Unexcavated)
077	26B		Cut	Cut of post-hole associated with Feature 1 (Unexcavated)
078	26B		Cut	Cut of post-hole associated with Feature 1 (Unexcavated)
079	26B		Cut	Cut of post-hole associated with Feature 1 (Unexcavated)
080	26B		Cut	Cut of post-hole associated with Feature 1 (Unexcavated)
081	26B		Cut	Cut of post-hole associated with Feature 1 (Unexcavated)
082	26B		Cut	Cut of post-hole associated with Feature 1 (Unexcavated)
083	26B		Cut	Cut of post-hole associated with Feature 1 (Unexcavated)
084	26B		Cut	Cut of post-hole associated with Feature 1 (Unexcavated)
085	26B		Cut	Cut of post-hole associated with Feature 1 (Unexcavated)
086	26B		Cut	Cut of post-hole associated with Feature 1 (Unexcavated)
087	26B		Cut	Cut of linear feature associated with Feature 1 (Unexcavated)
088	26B		Cut	Cut of irregular feature associated with Feature 1 (Unexcavated)



### APPENDIX 3: Photographic Register

#### *Digital*

<b>Digi No</b>	<b>Contexts/description</b>	<b>Taken from</b>	<b>Conditions</b>
1	Trench 1A	E	Bright
2	Trench 1A, Pit (003)	SE	Bright
3	Trench 2A	NE	Bright
4	Trench 3A	NE	Bright
5	Trench 3A representative section showing topsoil depth	S	Bright
6	Trench 4A section showing modern debris	N	Bright
7	Trench 4A	E	Bright
8	Trench 5A	E	Bright
9	Trench 6A	E	Bright
10	Trench 7A showing bucket teeth marks in base of trench	NE	Misty
11	Trench 7A	NE	Misty
12	Trench 8A	NE	Misty
13	Trench 1B NE-facing section of pit	NE	Overcast
14	Trench 2B NE-facing section of pit	NE	Overcast
16	N-facing section of pit (007) Trench 5B	N	Overcast
17	Shot of sondage in Trench 5B	N	Overcast
18	Pit (011) N-facing section, Trench 5B	N	Overcast
19	Pit (011) post-excavation, Trench 5B	N	Overcast
21	Trench 5B	SE	Overcast
22	Trench 10B	NE	Overcast
24	Trench 6B	NW	Overcast
25	Trench 7B	SW	Overcast
26	Trench 8B	S	Overcast
27	Trench 9B	S	Overcast
28	Trench 9B	S	Overcast
29	Trench 14B	SE	Overcast
30	Trench 10A	S	Cloudy
31	Trench 11A	E	Cloudy
32	Trench 12A	E	Cloudy
33	Trench 13A	E	Cloudy
34	Trench 14A	E	Cloudy
35	Trench 9A	W	Cloudy
36	Trench 15A	E	Overcast
37	Trench 16A	N	Overcast
38	Field of sheep overview	NE	Overcast
39	Trench 17A	E	Overcast
40	Section of Trench 15B	NE	Overcast
41	Trench 15B	SW	Overcast
42	Trench 16B showing (022)	SW	Overcast
43	Shot of plough marks under (022), Trench 16B	SW	Overcast
44	Trench 16B		Overcast
45	Trench 17B		Overcast
46	Feature (018) SW-facing section, Trench 14B	SW	Overcast
47	Cultivation furrow	S	Overcast
48	Feature (020) section	S	Overcast
49	Trench 18B	SW	Overcast
50	Trench 19B	W	Overcast

<b>Digi No</b>	<b>Contexts/description</b>	<b>Taken from</b>	<b>Conditions</b>
51	Trench 20B	W	Overcast
52	Trench 21B	W	Overcast
54	Trench 18A	E	Cloudy
55	Trench 19A	E	Cloudy
56	Trench 20A	E	Cloudy
57	Trench 21A	E	Cloudy
58	Trench 22A	E	Cloudy
59	Trench 23A	NE	Cloudy
62	Trench 22B	NE	Overcast
1	Feature (068) in plan	E	Low sun
2	General souterrain shots	S	Low sun
3	General souterrain shots	E	Low sun
4	General souterrain shots	W	Low sun
5	Trench 50B	E	Low sun
6	Feature (068)	E	Low sun
7	Trench 55B	N	Low sun
8	Trench 57B	S	Low sun
9	Trench 60B	S	Low sun
74	Trench 24A	NE	Overcast
75	Trench 25A	NE	Overcast
76	Trench 25A showing modern disturbance	E	Overcast
77	Trench 25A example of cultivation furrows	S	Overcast
78	Trench 26A	NE	Overcast
79	Trench 26A examples of cultivation furrows	SE	Overcast
80	Trench 26A showing modern plough scores at SW end of trench	NE	Overcast
81	Trench 26A showing modern disturbance and plough scores	NE	Overcast
82	Trench 27A	NE	Overcast
83	Trench 27A showing modern disturbance	N	Overcast
84	Trench 28A	SW	Bright
85	Trench 29A	SW	Bright
86	Trench 30A	N	Overcast
87	Trench 31A	N	Overcast
88	Trench 32A	NE	Overcast
89	Trench 32B	NE	Overcast
90	NW-facing section of feature (029)	NW	Overcast
91	Trench 33B	N	Overcast
92	Trench 34B	N	Overcast
93	View of backfilled Field A	SW	Overcast
94	Trench 35B	N	Overcast
99	Trench 31B, SW-facing section of pit (035)	SW	Bright
100	Trench 37B	E	Bright
101	Trench 36B	S	Bright
102	S-facing section of feature (037)	S	Bright
103	Trench 378B	N	Bright
104	Trench 39B	N	Bright
105	E-facing section of (039)	E	Bright
106	Trench 40B	SW	Bright
107	Trench 41B	SW	Bright
108	Trench 42B	SW	Bright
109	NW-facing section of feature (027)	NW	Bright

35mm

<b>SLR No.</b>	<b>Contexts/description</b>	<b>Taken from</b>	<b>Conditions</b>
1-2	General shot of souterrain	W	Low sun
3-4	Souterrain section general	E	Low sun
5-6	Souterrain section general	N	Low sun
7-8	Souterrain section general	S	Low sun
9-10	Trench 44B	N	Low sun
11-12	Trench 50B	E	Low sun
13-14	Feature (068) section	E	Low sun
15-16	Trench 55B	N	Low sun
17-18	Tench 57B	S	Low sun
19-20	Trench 60B	S	Low sun

## APPENDIX 4: Drawings Register

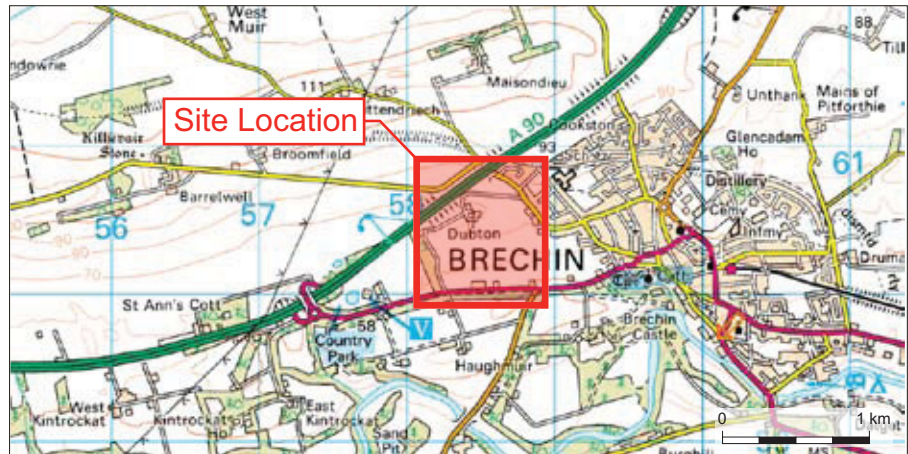
Dwg No.	Sheet No.	Scale	Plan / Section	Description/contexts
1	1	1:10	S	South-east facing section of pit (003) in Tr1A
2	1	1:10	S	South-east facing section of pit (005) in Tr4B
3	1	1:100	P	Plan of south-west end of Tr4B showing pit location of pit (005)
4	1	1:10	S	North-facing section of pit (007) in Tr5B
5	1	1:10	S	East-west profile of possible post hole (011) and pit (014) in Tr5B
6	2	1:10	S	North-east facing section of pit (009)
7	2	1:20	P	Plan of pit (009) within Tr1B
8	3a & b	1:20	P	Plan of features within Tr5B (007, 011, 014)
9	1	1:50	P	Part-plan of Tr14B and truncated linear feature (018) in Tr14B
10	1	1:10	S	South-west facing section of truncated linear feature (018) in Tr14B
11	2	1:10	S	South-east facing section of probable linear (020)
12	2	1:50	P	Plan of linear (020) in Tr8B
13	DB	1:20	S	Representative section of Tr16B and buried horizon (022)
14	DB	1:10	S	South-east facing section of of shallow elongated pit (023) Tr16B
15	DB	1:20	P	Part-plan of Tr16B and shallow elongated pit (023)
16	2	1:10	S	North-facing section of probable gully (027)
17	2	1:50	P	Plan of gully (027) Tr13B
18	1	1:10	S	North-west facing section of narrow elongated pit (029)
19	1	1:50	P	Part plan of Tr31B and pit (029)
20	1	1:10	S	South-east facing section of shallow pit (025) in Tr17B
21	1	1:20	P	Part plan of Tr17B and pit (025)
22	2	1:10	S	West-facing section of pit (031)
23	2	1:50	P	Plan of pit (031) in Tr26B
24	4	1:50	P	Part-ex plan of pit (035) in Tr31B
25	4	1:10	S	South-west facing section of pit (035) in Tr31B
26	4	1:10	S	South-facing section of possible pit (037) in Tr33B
27	5	1:10	S	East-facing section of truncated curvilinear ditch/gully (039)
28	4	1:10	S	West-facing section of pit (033) in Tr26B extension
29	6 & 7	1:50	P	Plan of Feature 1, probable roundhouse, souterrain and associated features
30	8	1:50	P	Plan of Feature 2, probable structure
31	8	1:10	S	North-west facing section of post-hole (046)
32	8	1:10	S	North-facing section of truncated post-hole (048)
33	7	1:10	S	North-facing section of souterrain (050)
34	4	1:20	S	East-facing section of pit (052) Tr53B extension
35	4	1:50	P	Plan of pit (052) in Tr53B extension
36	4	1:10	S	South-facing section of post-hole (054)
37	8	1:10	S	Section of pit (068)
38	8	1:50	P	Plan of pit (068)

## APPENDIX 5: Sample Register

Sample No.	Area	Context	Feature	Sample type	Volume
1		022		Bulk	5L

## APPENDIX 6: Discovery & Excavation in Scotland Entry

<b>LOCAL AUTHORITY:</b>	Angus
<b>PROJECT TITLE/SITE NAME:</b>	Dubton Farm, Brechin
<b>PROJECT CODE:</b>	DUFA
<b>PARISH:</b>	Brechin
<b>NAME OF CONTRIBUTOR:</b>	Phil Moore
<b>NAME OF ORGANISATION:</b>	CFA Archaeology Ltd
<b>TYPE(S) OF PROJECT:</b>	Archaeological Evaluation
<b>NMRS NO(S):</b>	None
<b>SITE/MONUMENT TYPE(S):</b>	Roundhouse, souterrain
<b>SIGNIFICANT FINDS:</b>	
<b>NGR (2 letters, 10 figures)</b>	NO 586 606
<b>START DATE (this season)</b>	15 November 2010
<b>END DATE (this season)</b>	23 November 2010
<b>PREVIOUS WORK (incl. DES ref.)</b>	N/A
<b>MAIN (NARRATIVE) DESCRIPTION:</b> (May include information from other fields)	<p>A trial trenching evaluation was undertaken by CFA at Dubton Farm, to the west of Brechin covering 5370m<sup>2</sup> or 7% of the development area. A scatter of generally shallow pits and linear features was recorded. Rig-and-furrow cultivation furrows were also recorded across parts of the site, generally aligned NW-SE.</p> <p>Two suites of archaeological remains were exposed and tested. The first of these comprises the remains of a post-built roundhouse with a diameter of 6m. The second suite of features comprises the remains of a souterrain with associated post-built roundhouse. The souterrain, a curved underground passage, appears to follow the curve of an arc of pits along its inner edge, which is likely to be the remains of a timber built roundhouse with which the souterrain was associated.</p>
<b>PROPOSED FUTURE WORK:</b>	N/A
<b>CAPTION(S) FOR ILLUSTRS:</b>	N/A
<b>SPONSOR OR FUNDING BODY:</b>	Scotia Homes (North) Ltd
<b>ADDRESS OF MAIN CONTRIBUTOR:</b>	The Old Engine House, Eskmills Park, Musselburgh, EH21 7PQ
<b>EMAIL ADDRESS:</b>	cfa@cfa-archaeology.co.uk
<b>ARCHIVE LOCATION (intended/deposited)</b>	National Monuments Record of Scotland Angus Council Sites and Monuments Record



Key:  
 Site Boundary



Fig. No: 1 Revision: A Client: Scotia Homes (North) Ltd

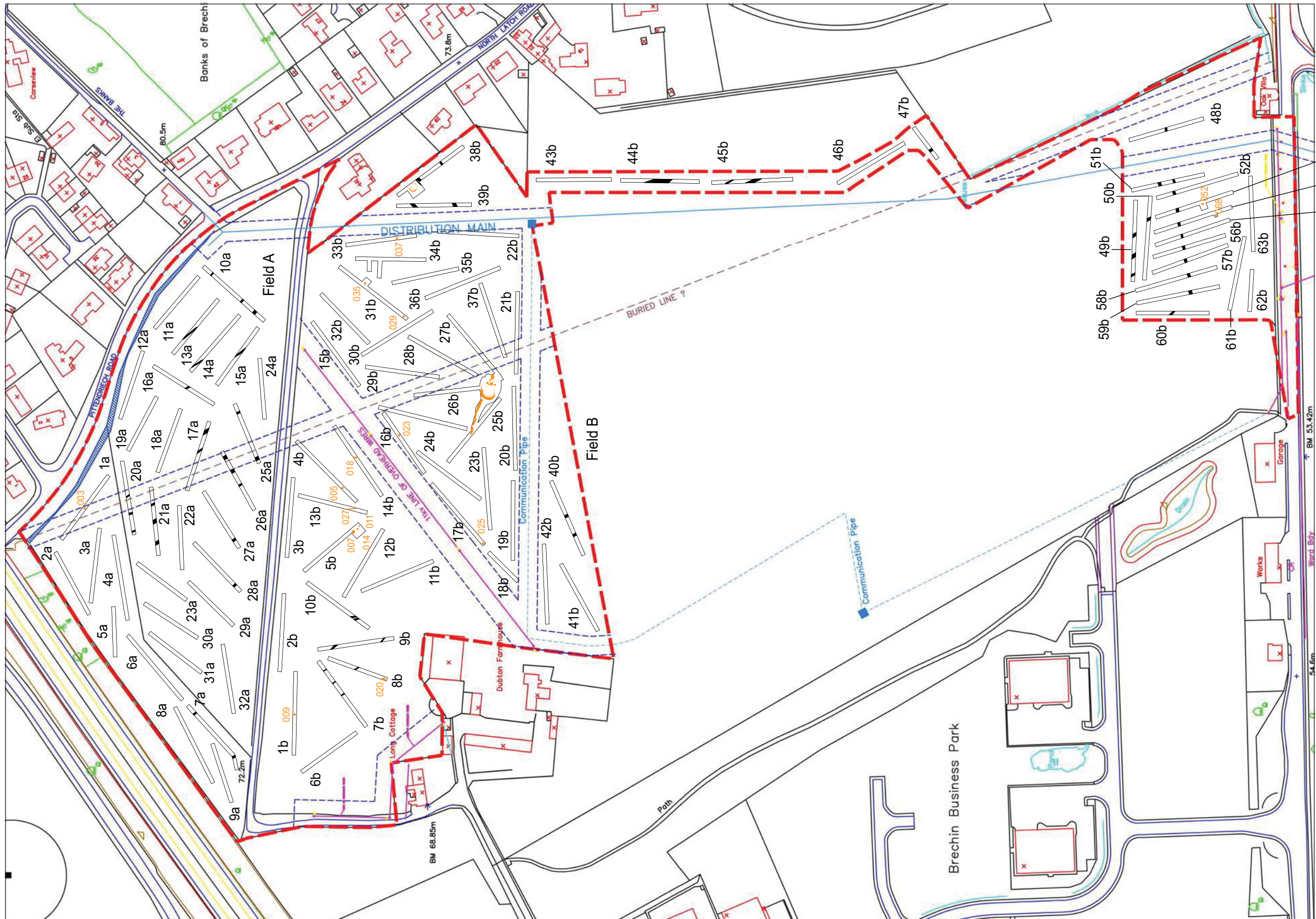
Title: Site location and trench plan

Project: Dubton Farm, Nr Brechin: Archaeological Evaluation

**CFA** ARCHAEOLOGY LTD  
 The Old Engine House  
 Eskmills Park  
 Musselburgh  
 East Lothian, EH21 7PQ  
 t: 0131 273 4380  
 f: 0131 273 4381  
 e: info@cfa-archaeology.co.uk  
 w: www.cfa-archaeology.co.uk

Scale: 1:5000 

Drawn by: SW Page No: Report No: 1849



Key:



Fig. No: **2** Revision: **A**

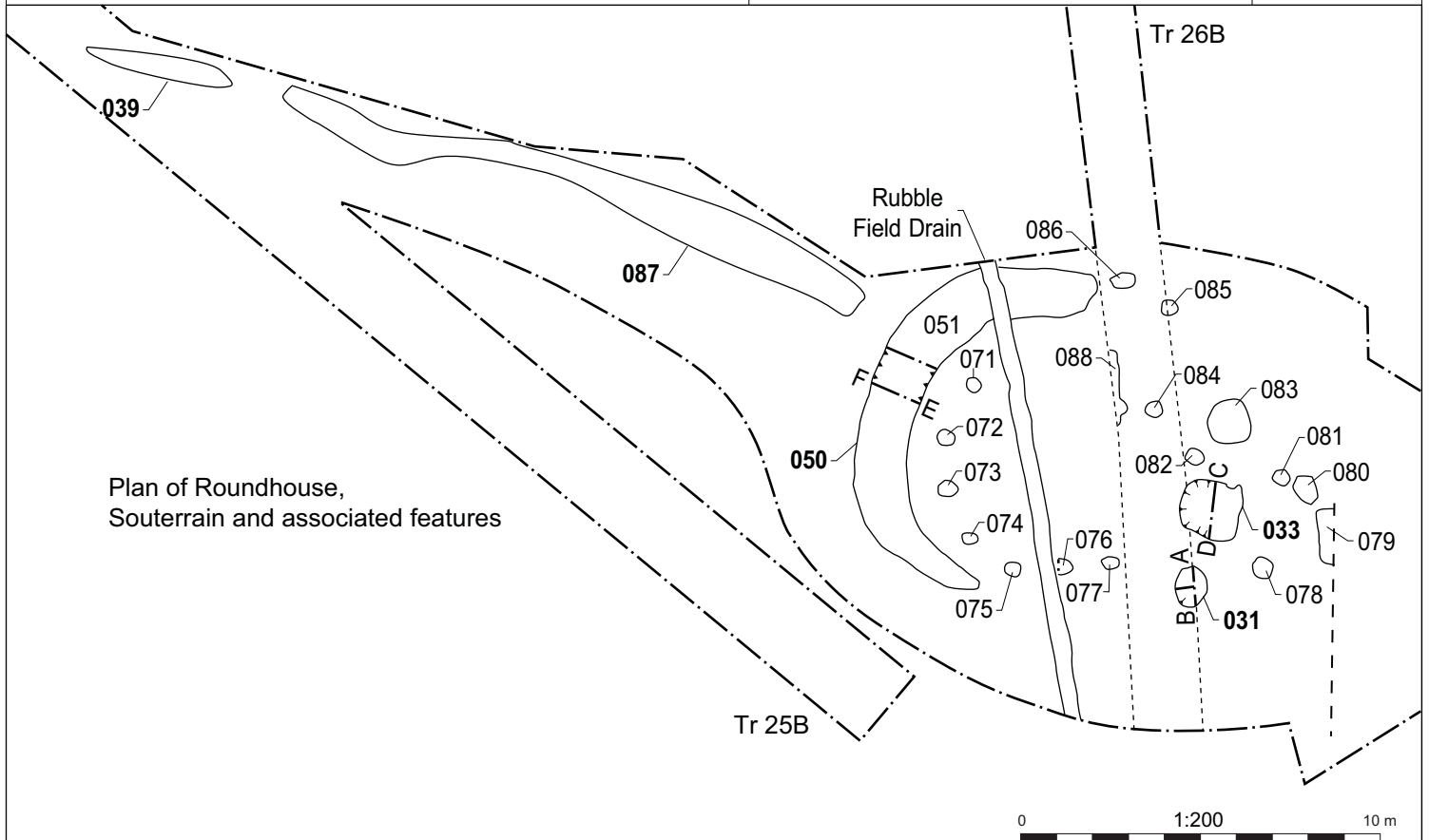
Title:  
**Trench plan and feature location**

Project:  
**Dubton Farm, Nr Brechin:  
Archaeological Evaluation**

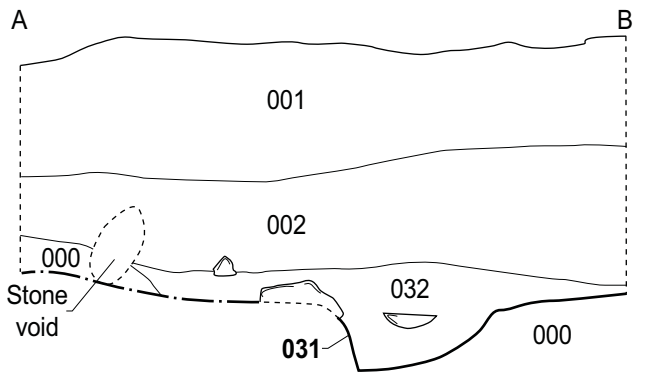
Scale:  
**1:2,500 @ A3**

Client:  
**Scotia Homes (North) Ltd**

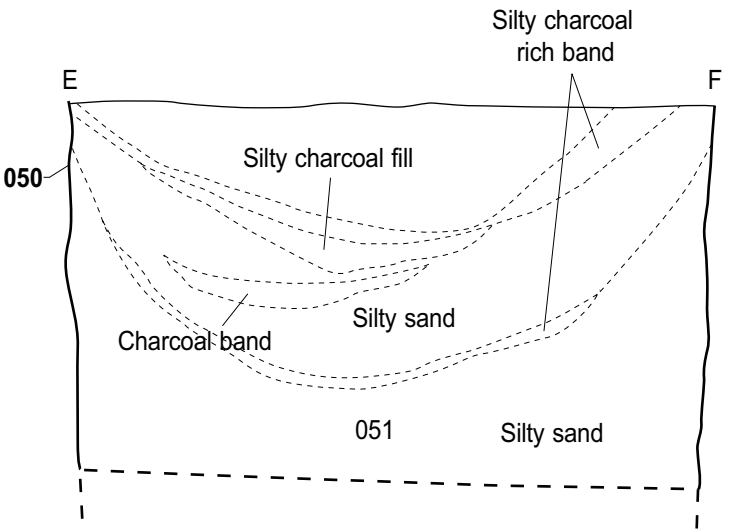
Drawn by: **SW** Report No: **1849**



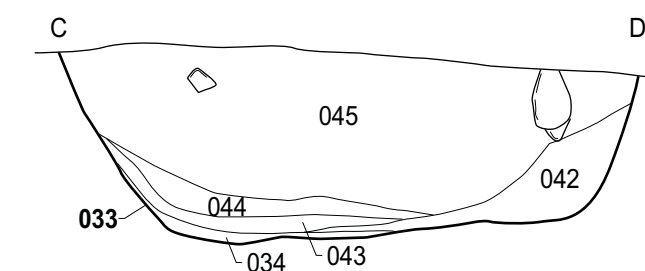
Plan of Roundhouse, Souterrain and associated features



Section of Feature 031



Section of Feature 050



Section of Feature 033

Key:	
Scale:	

Fig. No:	3	Revision:	A	Client:	Scotia Homes (North) Ltd
Title:	Roundhouse, souterrain and associated features Tr26b/27B				
Project:	Dubton Farm, Nr Brechin: Archaeological Evaluation				

	CFA ARCHAEOLOGY LTD The Old Engine House Eskmills Park Musselburgh East Lothian, EH21 7PQ t: 0131 273 4380 f: 0131 273 4381 e: info@cfa-archaeology.co.uk w: www.cfa-archaeology.co.uk	
	Drawn by: SW	Page No: 1849





Figure 5: General view of souterrain and other features in Tr 26B



Figure 6: Section through souterrain (050)



Key:	Fig. No:	5-6	Revision:	A	Client:	Scotia Homes (North) Ltd	 <p>CFA ARCHAEOLOGY LTD The Old Engine House Eskmills Park Musselburgh East Lothian, EH21 7PQ t: 0131 273 4380 f: 0131 273 4381 e: info@cfa-archaeology.co.uk w: www.cfa-archaeology.co.uk</p>
	Title:						
Scale:	Project: Dubton Farm, Nr Brechin: Archaeological Evaluation					Drawn by: SW	



Figure 7: Example of cultivation furrow Tr 25A



Figure 8: Example of modern made ground Tr 26A

Key:	Fig. No:	7-8	Revision:	A	Client:	Scotia Homes (North) Ltd	 <p>CFA ARCHAEOLOGY LTD The Old Engine House Eskmills Park Musselburgh East Lothian, EH21 7PQ t: 0131 273 4380 f: 0131 273 4381 e: info@cfa-archaeology.co.uk w: www.cfa-archaeology.co.uk</p>
	Title:						
Scale:	Project: Dubton Farm, Nr Brechin: Archaeological Evaluation					Drawn by: SW	