

# CFA Archaeology Ltd

*archaeological consultants*

*Advice on Archaeology & Planning*

*Environmental Impact Assessment*

*Intpretation, Design & Display*

*Finds/ Environmental Analysis*

*Field Evaluation & Excavation*

*Historic Building Recording*

*Site & Landscape Survey*

*Geophysical Survey*

**Towerbank Primary School,  
Portobello, Edinburgh**

**Archaeological Evaluation**

**Report No. 1859**

## **CFA ARCHAEOLOGY LTD**

The Old Engine House  
Eskmills Business Park  
Musselburgh  
East Lothian  
EH21 7PQ

Tel: 0131 273 4380  
Fax: 0131 273 4381  
email: [info@cfa-archaeology.co.uk](mailto:info@cfa-archaeology.co.uk)  
web: [www.cfa-archaeology.co.uk](http://www.cfa-archaeology.co.uk)

Author	Melanie Johnson MA PhD FSA Scot MIfA
Illustrator	Graeme Carruthers MA MAAIS
Editor	Bruce Glendinning BSc PGDip MIfA
Commissioned by	The City of Edinburgh Council
Date issued	February 2011
Version	0
OASIS Reference	cfaarcha1- 92383
Planning Application No.	
Grid Ref	NT 3056 7405

This document has been prepared in accordance with CFA Archaeology Ltd  
standard operating procedures.

**Towerbank Primary School,  
Portobello, Edinburgh**  
**Archaeological Evaluation**  
**Report No. 1859**

## **CONTENTS**

1.	Introduction	3
2.	Working Methods	4
3.	Archaeological Results	5
4.	Conclusion	7

## **Appendices**

1.	Context Register	9
2.	Summary of Excavation Results	9
3.	Photographic Register	9
4.	Discovery & Excavation in Scotland Entry	10

## **Illustrations (bound at rear)**

Fig. 1 Location map and trench plan

Fig. 2 View of Trench 2 from NW

Fig. 3 View of Trench 3 from SE

## **1. INTRODUCTION**

### **1.1 General**

This report presents the results of a programme of archaeological works undertaken by CFA Archaeology Ltd (CFA) in February 2011 at Towerbank Primary School, Portobello (NGR: NT 3056 7405) (Fig. 1). The work was commissioned by The City of Edinburgh Council's City Development, Roads & Transport Design department.

A Written Scheme of Investigation (WSI) for the project was produced by CFA. The WSI was based upon documents provided by the City of Edinburgh Council Archaeologist.

The project was managed by John Lawson of the City of Edinburgh Council Archaeology Service (CECAS).

### **1.2 Background**

Planning permission has been granted for an access road off Maryfield, Portobello, to serve Towerbank Primary School. The planning consent was subject to a condition requiring a programme of archaeological works.

The work required consisted of the excavation of an evaluation trench measuring 50m maximum by c.1.5m, to be excavated along the south-west side of the access road.

The site lies on the periphery of the former industrial potteries area of Portobello and as such had potential for the recovery of pottery dumps.

No previous invasive archaeological fieldwork is known to have taken place within the proposed development area prior to this evaluation.

### **1.3 Objectives**

The objectives of the project are to establish the presence/absence, extent, condition, character, quality and date of any archaeological features or deposits within the proposed development area; to establish their vulnerability to the proposed development; and to propose mitigation measures.

## **2. WORKING METHODS**

### **2.1 General**

CFA Archaeology Ltd follows the Institute for Archaeologists' Code of Conduct, Standards and Guidance for Archaeological Field Evaluations.

### **2.2 Trial Trenching**

Three trenches measuring 45m in total length by c.1.5m wide were excavated along the south-west side of the access road. The trench could not be continuous due to the presence of live utility services.

Topsoil and modern overburden was removed by a mechanical excavator equipped with a 1.5m wide smooth-bladed ditching bucket. All groundbreaking work was carried out under constant archaeological supervision. All further excavation required to fulfil the objectives of the evaluation was carried out by hand.

The stratification of all excavated areas was recorded, whether or not significant archaeological deposits were identified.

Trench positions were surveyed using industry standard electronic surveying equipment.

All trenches were backfilled on completion of the evaluation.

### 3. ARCHAEOLOGICAL RESULTS

Numbers in bold and parentheses refer to contexts (Appendix 1). The site was a former play area, with a surface covering of either crushed red blaes (**001**) or tarmac (**002**). Natural subsoil in all trenches was clean yellow sand (**000**). The depth of overburden became shallower to the SE.

#### *Trench 1*

This trench measured 10m by 1.5m. The deposits encountered consisted of crushed red blaes and hardcore (**001**) to a depth of 0.2m, followed by 0.2m of made ground (**003**). A layer of disturbed sand (**004**) of 0.3m depth was present beneath this.

A ceramic drain pipe was present, running approx. E-W.

There were no archaeological features, deposits or artefacts identified within this trench.

#### *Trench 2*

This trench measured 10m by 1.5m (Fig. 2). The deposits encountered consisted of crushed red blaes and hardcore (**001**) to a depth of 0.2m, followed by 0.1m of made ground (**003**). A layer of disturbed sand (**004**) of 0.3m depth was present beneath this.

A ceramic drain pipe was present, running approx. E-W, and a plastic cable duct, probably for a telecoms cable, was also noted.

There were no archaeological features, deposits or artefacts identified within this trench.

#### *Trench 3*

This trench measured 25m by 1.5m (Fig. 3). The deposits encountered consisted of crushed red blaes and hardcore (**001**) to a depth of 0.2m to the NW and tarmac and hardcore (**002**) to the SE. Beneath this was 0.1m of made ground (**003**) and 0.2 of disturbed sand (**004**). An old kerb line, cemented in place, was found to demarcate the area of blaes from the tarmac.

Two lead water pipes, a plastic drain pipe and a ceramic drain pipe in a large rubble-filled cut were present.

There were no archaeological features, deposits or artefacts identified within this trench.

#### 4. CONCLUSION

An archaeological trial trenching evaluation was carried out at Towerbank Primary School prior to the construction of an access road.

Three trenches were excavated covering 67.5m<sup>2</sup>. The trenching did not identify any features or deposits of archaeological significance.

CFA does not recommend any further mitigation measures. However, the final decision regarding all mitigation measures lies with the City of Edinburgh Council Archaeologist.

A summary statement of the results of this evaluation will be submitted for publication in *Discovery and Excavation in Scotland* (Appendix 4).

The project archive, comprising all CFA record sheets, maps and reports, will be deposited with the National Monuments Record of Scotland (NMRS) and copies of reports will be lodged with the City of Edinburgh Council Sites and Monuments Record.

## APPENDIX 1: Context Register

Context No.	Trench	Description
000	All	Natural yellow sand
001	1, 2, 3	Crushed red blaes and hardcore
002	3	Tarmac and hardcore
003	All	Made ground – brown clayey soil containing rubble, brick fragments
004	All	Disturbed yellow sand containing some bricks and rubble

## APPENDIX 2: Summary of Excavation Results

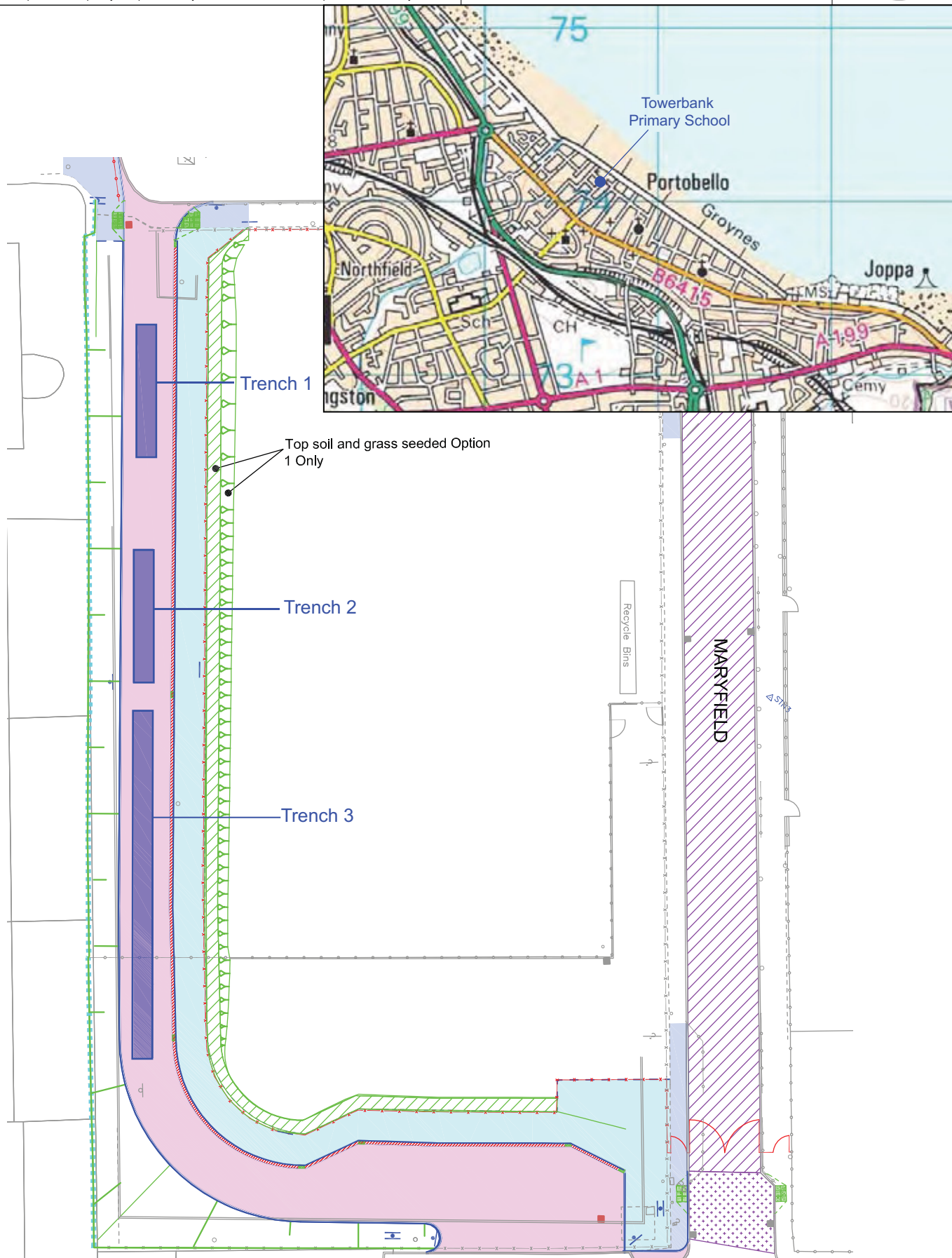
Trench no.	Size (m)	Depth of deposits (m)	Features
1	10 x 1.5	0.7	Ceramic drain pipe
2	10 x 1.5	0.6	Ceramic drain pipe, modern cable duct
3	25 x 1.5	0.5	Ceramic drain pipe, plastic pipe, 2 lead water pipes

## APPENDIX 3: Photographic Register (Digital)

No.	Description	From	Conditions
1	Trench 1	SE	Dull
2	Trench 1	SE	Dull
3	Trench 2	NW	Dull
4	Trench 2	NW	Dull
5	Trench 3	SE	Dull
6	Trench 3	SE	Dull
7	General view of site	SE	Dull
8	General view of site	NW	Dull

## APPENDIX 4: Discovery and Excavation in Scotland Entry

<b>LOCAL AUTHORITY:</b>	City of Edinburgh Council
<b>PROJECT TITLE/SITE NAME:</b>	Towerbank Primary School, Portobello
<b>PROJECT CODE:</b>	TOWB
<b>PARISH:</b>	Edinburgh, City of
<b>NAME OF CONTRIBUTOR:</b>	Melanie Johnson
<b>NAME OF ORGANISATION:</b>	CFA Archaeology Ltd
<b>TYPE(S) OF PROJECT:</b>	Archaeological Evaluation
<b>NMRS NO(S):</b>	N/A
<b>SITE/MONUMENT TYPE(S):</b>	N/A
<b>SIGNIFICANT FINDS:</b>	N/A
<b>NGR (2 letters, 10 figures)</b>	NT
<b>START DATE (this season)</b>	01 February 2011
<b>END DATE (this season)</b>	01 February 2011
<b>PREVIOUS WORK (incl. DES ref.)</b>	N/A
<b>MAIN (NARRATIVE) DESCRIPTION:</b> (May include information from other fields)	An archaeological trial trenching evaluation was carried out at Towerbank Primary School prior to the construction of an access road. The site lies on the periphery of the former industrial potteries area of Portobello and as such had potential for the recovery of pottery dumps. Three trenches were excavated covering 67.5m <sup>2</sup> . The trenching did not identify any features or deposits of archaeological significance.
<b>PROPOSED FUTURE WORK:</b>	N/A
<b>CAPTION(S) FOR ILLUSTRS:</b>	N/A
<b>SPONSOR OR FUNDING BODY:</b>	The City of Edinburgh Council
<b>ADDRESS OF MAIN CONTRIBUTOR:</b>	The Old Engine House, Eskmills Park, Musselburgh, EH21 7PQ
<b>EMAIL ADDRESS:</b>	cfa@cfa-archaeology.co.uk
<b>ARCHIVE LOCATION</b> (intended/deposited)	National Monuments Record of Scotland City of Edinburgh Council Sites and Monuments Record



Key:



Fig. No: 1 Revision: A Client: The City of Edinburgh Council

Title: Location Map showing Trench Positions

Project: Towerbank Primary School, Portobello  
Archaeological Evaluation

Scale: 1:400 @ A4

**CFA**  
ARCHAEOLOGY LTD  
The Old Engine House  
Eskmills Park  
Musselburgh  
East Lothian, EH21 7PQ  
t: 0131 273 4380  
f: 0131 273 4381  
e: info@cfa-archaeology.co.uk  
w: www.cfa-archaeology.co.uk

Drawn by: LW

Page No:


Report No: 1859



Fig. 2 - View of Trench 2 from NW



Fig. 3 - View of Trench 3 from SE

Key:	Fig. No:	2,3	Revision:	A	Client:	The City of Edinburgh Council					
	Title:						 <div>CFA ARCHAEOLOGY LTD The Old Engine House Eskmills Park Musselburgh East Lothian, EH21 7PQ  t: 0131 273 4380 f: 0131 273 4381 e: info@cfa-archaeology.co.uk w: www.cfa-archaeology.co.uk</div>				
	Project:										
Scale:		Towerbank Primary School, Portobello Archaeological Evaluation				Drawn by:	LW	Page No:		Report No:	1859