

Database / Spreadsheet documentation for the Archaeology Data Service

Please fully document and record any databases that you intend to submit to the ADS for archiving. This will help us prepare them for archiving and online dissemination and will enable future re-use of the data by others.

If you already have documentation for your database in another format and would prefer us to work with this instead, this should not be a problem as long as it accurately describes your data tables and any relationships between them.

Title of project:	Predictive modelling of Geoarchaeological resources at a river confluence
Name of database/ spreadsheet file:	\\IFSAR data\Profiles 3 files detailing IFSAR Profiles 1-3

Repeat the following section for each table within your database:

Name of table / worksheet 1:	profile_1_IFSAR.xls	
Purpose of table/worksheet:	Record of IFSAR DSM data for Profile 1	
Number of rows of data:	481	
Primary key (database only):		
Name of field	Full description of field and codes or terminology used	Data type and field length (database only)
<i>ID</i>	n/a	
<i>LiDAR FP DSM</i>	LiDAR First Pulse Digital Surface Model values	
<i>od_lpg</i>		
<i>Ext_int</i>		
<i>IFSAR DSM</i>	IFSAR Digital Surface Model values	

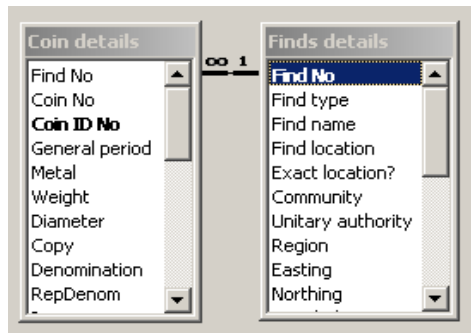
Name of table / worksheet 2:	profile_2_IFSAR.xls	
Purpose of table/worksheet:	Record of IFSAR DSM data for Profile 2	
Number of rows of data:	895	
Primary key (database only):		
Name of field	Full description of field and codes or terminology used	Data type and field length (database only)
<i>ID</i>	n/a	

<i>LiDAR FP DSM</i>	LiDAR First Pulse Digital Surface Model values	
<i>od_lpg</i>		
<i>Ext_int</i>		
<i>IFSAR DSM</i>	IFSAR Digital Surface Model values	

Name of table / worksheet 3:	profile_3_IFSAR.xls	
Purpose of table/worksheet:	Record of IFSAR DSM data for Profile 3	
Number of rows of data:	1535	
Primary key (database only):		
Name of field	Full description of field and codes or terminology used	Data type and field length (database only)
<i>ID</i>	n/a	
<i>LiDAR FP DSM</i>	LiDAR First Pulse Digital Surface Model values	
<i>od_lpg</i>		
<i>Ext_int</i>		
<i>IFSAR DSM</i>	IFSAR Digital Surface Model values	

Relationships (database only)

Please include an entity relationship diagram to show the relationships between your database tables



The completed documentation should be submitted to the ADS in **digital** form along with the deposited data that it describes, or via e-mail to Catherine Hardman at csh3@york.ac.uk