

**Archaeological evaluation by trial-trenching
on land adjacent to
25 East Hill, Colchester, Essex, CO1 2QX**

September 2015



**by Laura Pooley
with contributions by Stephen Benfield,
illustrations by Chris Lister and Emma Holloway**

on behalf of Alan Bender Ltd

Planning reference: 150770
CAT project ref.: 15/08h
NGR: TM 0038 2525
Colchester Museum accession code: 2015.85
UAD ref: ECC3059
OASIS reference: colchest3-221829



Colchester Archaeological Trust
Roman Circus House,
Roman Circus Walk,
Colchester,
Essex CO2 7GZ

tel.: 07436 273 304
email: archaeologists@catuk.org

CAT Report 875
October 2015

Contents

1	Summary	1
2	Introduction	1
3	Archaeological background	1
4	Results	2
5	Finds	3
6	Discussion	6
7	Acknowledgements	6
8	References	7
9	Abbreviations and glossary	7
10	Contents of archive	8
11	Archive deposition	8

Figures after p8

Appendix 1 CAT WSI

Appendix 2 OASIS Summary

List of plates, figures and tables

Cover: general site shot

Plate 1 Chafing dish sherd, Colchester-type ware 4

Table 1 Pottery fabrics 3

Table 2 Finds by context 4-6

Fig 1 Site location

Fig 2 Excavation results

Fig 3 Representative trench section and sections of F1 and F2

1 Summary

An archaeological trial-trenching evaluation undertaken in advance of the erection of a new two-storey detached building on land adjacent to 25 East Hill revealed six post-medieval and one modern feature. A post-medieval wall foundation made from 17th-century bricks probably formed the base of a plinth for either a timber-framed structure or outbuilding. The remaining five pits and one pit/posthole were typically associated with yard and garden deposits of the post-medieval to modern periods. There is no evidence of any activity before the post-medieval period except for a small quantity of residual Roman and medieval finds.

2 Introduction (Fig 1)

This report presents the results of an archaeological trenched evaluation on land adjacent to 25 East Hill, Colchester, Essex which was carried out on the 22nd September 2015. The work was commissioned by Alan Bender Ltd in advance of the erection of a new two-storey detached building, and was undertaken by Colchester Archaeological Trust (CAT).

In response to consultation with Colchester Borough Council Planning Services (CBCPS), Colchester Borough Council Archaeological Advisor Jess Tipper advised that in order to establish the archaeological implications of this application, the applicant should be required to commission a scheme of archaeological investigation in accordance with paragraphs 128, 129 and 132 of the *National Planning Policy Framework* (DCLG 2012).

All archaeological work was carried out in accordance with a *Brief for a Trenched Archaeological Evaluation*, detailing the required archaeological work, written by Jess Tipper (CBCPS 2015), and a written scheme of investigation (WSI) prepared by CAT in response to the brief and agreed with CBCPS (CAT 2015)

In addition to the brief and WSI, all fieldwork and reporting was done in accordance with English Heritage's *Management of Research Projects in the Historic Environment (MoRPHE)* (English Heritage 2006), and with *Standards for field archaeology in the East of England* (EAA 14 and 24). This report mirrors standards and practices contained in the Institute for Archaeologists' *Standard and guidance for archaeological field evaluation* (ClfA 2014a) and *Standard and guidance for the collection, documentation, conservation and research of archaeological materials* (ClfA 2014b).

3 Archaeological background

The following archaeological background draws on the Urban Archaeological Database (UAD) created by Colchester Borough Council and accessed via the *Heritage Gateway* website.

East Hill is an area of high archaeological interest, an historic routeway into the Roman and later town. This is emphasized by the high number of listed buildings within 100m of the proposed development. On the south side of East Hill nos 15-42 form a chain of Grade II listed buildings ranging in date from the early 16th century to the 19th century. On the north side of the street, starting with the Goat and Boot public house and continuing up the hill through nos 71-75 (including the Eagle Gate Brewery) these Grade II listed buildings span the 17th – 19th centuries. The building adjacent to the development site, no. 25 East Hill dates to the 17th century (EHER 31127).

Little archaeological work has been carried out on East Hill; Hull noted in 1958 that no sign of Roman metalling had hitherto been observed beneath the line of the modern street and that remains true today. P.G. Laver recorded a section of Roman road just to the north of the intersection of East Hill and Guildford Road in 1928 (Hull 11; UAD EVT 586). A watching brief in 2003-4 at 60 East Hill (formerly the JET petrol filling station)

found no trace of this road or any other archaeological feature (CAT Report 282). What little work has been carried out has been concentrated further up the hill, in the vicinity of the East Gate. In 2003 a trial-trenching evaluation was undertaken at 1-2 East Hill adjacent to the town wall (Scheduled Monument 1003772). This identified post-medieval pits containing domestic refuse but no evidence from prior to the post-medieval period (CAT Report 226). The lack of Roman or medieval remains at this location is interpreted as a result of the terracing that took place around the gate when the hill's gradient was reduced in the early 19th century. A watching brief at the rear of 9 East Hill in 2008 uncovered evidence for late medieval/post-medieval wall foundations but revealed no evidence for Roman remains within 800mm of the surface (CAT Report 469).

The dearth of sub-surface archaeological remains associated with the lower part of East Hill is probably explained by the presence of the late medieval and post-medieval buildings that line the street. Many of these have cellars which will have destroyed the archaeological record but others, in particular the timber-framed structures dating to the 16th and 17th centuries, may have preserved medieval and earlier deposits lying beneath them. The 1st edition 6 inch Ordnance Survey for this part of Colchester shows that the development area has been an access point to the yard behind no. 25 since at least the 1870s and probably since the plot was built. This suggests the development site will have a high survival of medieval and earlier archaeology, although it should be noted that a significant number of service runs appear to have been located through the area.

4 Results (Figs 2-3)

A single trial trench was excavated across the footprint of the proposed building measuring 8m long by 1.80m wide.

Three layers were identified: modern topsoil, 370mm thick (L1: L1a tarmac, c 150mm thick; L1b messy crush c 100mm thick; L1c crush, c120mm thick), sealing a post-medieval/modern sandy loam subsoil, 240mm thick (L2), which sealed natural mottled sand (L3).

Six post-medieval features and one modern feature were recorded in the trench. At the north end were features F1, a post-medieval posthole/small pit, and F2, a small pit containing peg-tile. Both were probably cut through L2 (although this was not visible in L2) into L3, and were probably associated with a building that stood on or near the street frontage.

Modern 18th- or 19th-century pit F4 was located up against the north side of wall foundation F5. Cutting through L2, pit F4 contained modern mortar fragments along with post-medieval pottery, peg-tile and Roman ceramic building material (CBM). Wall foundation F5 consisted of a single course of soft red un-frogged 17th century bricks, probably representing the base of a plinth for a timber-framed structure or outbuilding.

Large post-medieval pit F6 had been partially truncated by wall foundation F5 and was not sectioned due to unsafe working depths. However, some finds were recovered from the upper fill and included post-medieval pot, peg-tile, Roman CBM and a copper alloy jetton and pin. Two further large post-medieval pits, F7 and F8, had been cut further to the south. Pit F8 was the later of the two features cutting F7; neither were excavated due to unsafe working depths. Finds recovered from the upper fill of both features included post-medieval pot, peg-tile and Roman CBM.

5 Finds

by Stephen Benfield

Introduction

The archaeological work recovered small quantities of finds of Roman, medieval and post-medieval date. These include three metal finds, which were recorded as individually numbered small finds. The finds come from six contexts, consisting of five cut features (F2, F4, F6, F7 and F8) and a soil layer (L2). The Roman finds are residual and in terms of dating, the finds most closely associated with the contexts are of late medieval (14th-15th/16th century) and post-medieval (16th-17th/18th century) date. The pottery fabrics used in the report refer to the Colchester Roman pottery fabric series (CAR 10) and the post-Roman pottery fabric series (CAR 7). The pottery fabrics are listed in [Table 1](#) and the finds are listed and described by context in [Table 2](#). The three metal small finds (SF) are described below.

Fabric codes	Fabric name
<i>Roman:</i>	
BACG	Central Gaulish plain samian
<i>Post-Roman:</i>	
13	Early medieval sandy wares
21A	Colchester-type ware
23A	Medieval Surrey white wares (general)
40	Post-medieval red earthenwares (general)
45	German stonewares (general)

[Table 1](#) Pottery fabrics

Metal small finds

F8(6) SF1 Jetton, copper-alloy. Complete, but surface part obscured by dirt, small central perforation, probably a Nuremberg rose-orb type and probably dating to the period of the late 16th-earlier 17th century. Dia 25mm, weight (uncleaned) 2g.

F006(7) SF2 Dress pin. Complete small dress pin of late medieval or post-medieval date. Length 20mm.

F008(9) SF3 Iron sheet. Piece(s) of thin iron sheet or an object, broken into two pieces, heavily corroded and stuck (by corrosion) to a sherd of Colchester-type ware. Length 90mm, width 60mm (measured as both pieces joined together).

Discussion

The discussion is concerned primarily with finds for which independent dating (date range relating to the period when they were current) can be provided and which are useful for dating the contexts. Primarily this consists of the pottery supported, where relevant, by types of ceramic building material. However, the presence of animal bone, one bearing cut marks from butchery, is noted here as being present in several contexts as are pieces from peg-tiles.

There is a small quantity of Roman finds consisting of pieces of ceramic building material (CBM) and a single pottery sherd. All of these are residual in later dated (medieval/post-medieval) contexts. The pottery (F8) is a piece from the lower part of a Dr 33 cup from the central Gaulish potteries and can be dated to the 2nd century. The tile consists of broken piece of Roman brick/tile and pieces of *imbrex* roof tile, several of which have clearly been reused as there are traces of mortar across the breaks. There is a single example of a piece of cream coloured Roman tile (F7).

Pottery of medieval date is present in several of the contexts. There is one sherd of early medieval sandy ware (Fabric 13) from F4, dating to the 12th-early 13th century. This was found together with pieces from peg-tiles which are probably unlikely to date prior to the 14th century (Ryan & Andrews 1993, 97). Otherwise the medieval pottery is of late medieval date. There are sherds of medieval Colchester-type ware (Fabric 21A)

from F6, F8 and L2. A number of these appear to date to the later part of the production of this type of pottery (c 15th-early 16th century) as they have reduced surfaces. Among the features from which this pottery was recovered only F8 has no closely dated later finds, although a piece of brick from this feature suggests a Tudor, or slightly later post-medieval date.

Of particular interest among the Colchester-type ware is a sherd from a chafing dish, which was recovered from F8. These types of pottery vessels were used to keep small amounts of food warm by holding hot charcoal while the plate/bowl containing the food was rested on top of them. The sherd preserves most of an anthropomorphic, fork-bearded, face mask handle that comes from around the lower edge of the chafing dish bowl. There are similar examples illustrated in CAR 7 (figs 100-102). The piece is in a red fabric with a cream/yellowish-cream underslip over which a clear glaze has been applied across the face mask giving it a bright yellow finish. The impression of the beard has been rendered using incised lines in a sgraffito technique and further sgraffito decoration, consisting of wavy lines, is visible to the left of the face on the pot body. The inside of the sherd been glazed over a cream underslip where the effect is more mottled orange-brown with some yellow and grey. These pots at Colchester can be dated to the period of the late 14th-early 15th century and are more common among contexts dating to the 15th century (CAR 7, 154).



Plate 1 Chafing dish sherd, Colchester-type ware

Several of the contexts contain pottery, which can be closely dated to the post-medieval period. Sherds of post-medieval glazed ware (Fabric 40) dating to the 16th/17th-18th century, or slightly later, were recovered from F6, F7 & L2. A sherd from an imported stoneware jug (Fabric 45), which came from L2, can be dated to the 16th-17th century.

A jetton (counting token) recovered from F6 (SF1), although not cleaned/conserved, appears to belong to the rose-orb series and probably dates to the period of the 16th-17th century.

Ctxt	Find no.	Form/ description	Fabric	No.	Wt/g	spot date
F002	3	CBM peg-tile (12mm thick)	red, medium-coarse sand	2	58	med-p-med
F004	4	CBM One piece Roman <i>imbrex</i> (reused)	red, fine sand			Roman
F004	4	CBM peg-tile pieces (10 mm thick)	red, coarse sand			med-p-med
F004	4	Pottery, flat rim from a	13 (oxidised red-			12-E13C

Ctxt	Find no.	Form/ description	Fabric	No.	Wt/g	spot date
		bowl/cooking pot	brown with grey core)			
F006	5	Pottery, one sherd oxidised with white paint & glaze dot splash, other reduced surface	21A	2	37	15-M16C
F006	5	single, thin sherd, late med/early post-med transitional	40	1	16	15/16-16C
F006	5	2 glazed sherds, one other	40	3	26	16/17-18C
F006	5	CBM Roman, abraded	red, grey core, fine sand	3	177	Roman
F006	5	CBM p-tile (9mm-11mm thick)	red, fine-medium sand, grey core	2	121	med-p-med
F006	5	CBM brick (55mm thick), surfaces powdering, possibly subjected to continued dry heat(?)	brownish, friable, fine sand fabric, some red-brown ferrous inclusions	1	183	p-med
F006	5	Animal bone		1	2	
F006	6	SF1 Copper-alloy jetton		1	2	16-17C
F006	7	SF2 Dress pin				late medieval(?)-post-medieval
F007	8	Pottery, 2 sherds	40	2	23	16/17-18C
F007	8	CBM, Roman tile/brick (21mm thick)	red, fine sand	1	220	Roman
F007	8	CBM Roman	cream fabric, fine sand	1	55	Roman
F007	8	CBM, Roman <i>imbrex</i> , burnt(?)	fine sand	2	142	Roman
F007	8	CBM brick (thickness 60mm+), possibly Roman(?) but most probably post-medieval (18-19C)	orange, fine sand fabric	1	180	post-medieval(?)
F008	9	Pottery, Samian Dr 33 cup	BACG	1	4	Roman 2C
F008	9	Pottery, anthropomorphic handle from a Colchester-type chafing dish with sgraffito detailing of bearded mask (CAR 7, 152-53)	21A	1	57	14-15C
F008	9	Pottery, part glazed base sherd stuck to corroded iron piece(s), handle attachment scar	21A	1	-	13/14-15/16C
F008	9	SF3 Fe Iron sheet piece(s), joining, corroded and stuck (by corrosion) to a sherd of Colchester-type ware		2		
F008	9	Pottery, storage jar rim, thumbled strip, reduced surface with white paint	21A	1	50	15-M16C
F008	9	Pottery neck and body sherd	21A	3	25	13/14-15/16C
F008	9	CBM One piece Roman <i>imbrex</i> (reused)	red, medium sand	1	108	Rom
F008	9	CBM peg-tile pieces (10-12mm thick)	red, medium sand	5	313	med-p-med
F008	9	CBM, brick, corner piece, 40mm thick(?)	fine sand with some pale sandy clay(?) and	1	188	15-16/17C

Ctxt	Find no.	Form/ description	Fabric	No.	Wt/g	spot date
			brownish red ferrous inclusions			
F008	9	Mortar, grey-white lime mortar		3	234	
F008	9	Nail, forged fe (iron) nail, (50 mm long)		1	9	
F008	9	A bone (medium mammal, includes sheep jaw)		4	39	
L002	1	CBM one piece thick (15mm) poss Roman, other peg-tile (10 mm thick). One other unidentified small piece	red, sandy, thinner piece with grey core	3	55	med-p-med (residual Roman?)
L002	1	Pottery large ribbed handle & body sherd, dark surface, Late Colchester type ware	21A	2	55	15-M16C
L002	1	base sherd	21A(?)	1	22	15-M16C
L002	1	Pottery, stoneware jug	45	1	22	16-17C
L002	1	Animal bone (medium size mammal, cut marks on one piece)		3	55	
L002	2	CBM peg-tile pieces (10-12mm thick) one with round peg-hole	red medium-coarse sand	2	118	med-p-med
L002	2	Pottery, green glaze on both surfaces, handle scar	23A	1	6	14-15C
L002	2	Pottery, rim from a large jar/cistern with handle (internal glaze), rim (glazed all over), body sherd (with external glaze)	Fabric 40	3	100	16-17/18C
L002	2	Animal bone (medium size mammal)		1	25	

Table 2 Finds by context

6 Discussion

One modern and six post-medieval features were observed on this site.

Of particular interest is a post-medieval wall foundation made from 17th-century bricks forming the base of a plinth for either a timber-framed structure or outbuilding. A chain of buildings ranging in date from the early 16th century to the 19th century run from nos. 15-42 on the south side of East Hill (now all Grade II listed), and this structure may be associated with these buildings.

The remaining features were all pits and contained material which would typically be associated with yard and garden deposits of the post-medieval to modern periods. The material appears to be domestic refuse from domestic dwellings, ie broken pots, peg tile, animal bone with butchery cut marks and personal items.

There is no evidence of any activity before the post-medieval period except for a small quantity of residual Roman and medieval finds. This is possibly due to post-medieval features removing any earlier activity.

7 Acknowledgements

CAT thanks Alan Bender Ltd for commissioning and funding the work. The project was managed C Lister and fieldwork was carried out by C Lister and A Wightman. Site

plans were prepared by C Lister. The project was monitored for the CBCPS by Jess Tipper.

8 References

Note: all CAT reports, except for DBAs, are available online in PDF format at <http://cat.essex.ac.uk>

CAR 7	2000	John Cotter, <i>Post-Roman pottery from excavations in Colchester, 1971-85</i> , Colchester Archaeological Report 7
CAR 10	1999	Robin Symonds and Sue Wade, <i>Roman pottery from excavations in Colchester, 1971-86</i> , Colchester Archaeological Report 10
CAT Report 226	2003	<i>An archaeological evaluation at 1-2 East Hill, Colchester, Essex February 2003</i> . CAT archive report, by B Holloway (May 2003)
CAT Report 282	2004	<i>Watching brief report: 60 East Hill (formerly Jet petrol filling station), Colchester, Essex</i> . CAT archive report, by K Orr (August 2004)
CAT Report 469	2008	<i>Watching brief at 9 East Hill, Colchester, Essex</i> . CAT archive report, by A Wightman (April 2008)
CAT	2015	<i>Written Scheme of Investigation (WSI) for archaeological evaluation on land adjacent to 25 East Hill, Colchester, Essex, CO1 2QX</i>
CBCPS	2015	<i>Brief for a Trenched Archaeological Evaluation at adjacent to 25 East Hill, Colchester, CO1 2QX</i>
ClfA	2014a	<i>Standard and guidance for archaeological field evaluation</i>
ClfA	2014b	<i>Standard and guidance for the collection, documentation, conservation and research of archaeological materials</i>
DCLG	2012	<i>National Planning Policy Framework</i> . Dept of Communities and Local Government.
EAA 14	2003	<i>Standards for field archaeology in the East of England</i> , East Anglian Archaeology, Occasional Papers, 14 . Ed. D Gurney
EAA 24	2011	<i>Research and archaeology revisited: A revised framework for the East of England</i> , East Anglian Archaeology Occasional Papers 24 , by Maria Medlycott
English Heritage	2006	<i>Management of Research Projects in the Historic Environment</i> (English Heritage)
Ryan, P., & Andrews, D.	1993	'A brick and tile typology for Cressing Temple' in Andrews, D., <i>Cressing Temple. A Templar and Hospitaller manor in Essex</i> , 93-103

9 Abbreviations and glossary

CAT	Colchester Archaeological Trust
CBCPS	Colchester Borough Council Planning Services
CBM	brick/tile (ceramic building material)
ClfA	Chartered Institute for Archaeologists
context	specific location of finds on an archaeological site
feature (F)	an identifiable thing like a pit, a wall, a drain: can contain 'contexts'
layer (L)	distinct or distinguishable deposit of soil
medieval	period from AD 1066 to Henry VIII
modern	period from c AD 1800 to the present

natural	geological deposit undisturbed by human activity
post-medieval	from Henry VIII to c AD 1800
Roman	period from AD 43 to around AD 430
UAD	Urban Archaeological Database
WSI	Written Scheme of Investigation

10 Contents of archive

Finds

One museum box containing all finds

Paper and digital record

One A4 document wallet containing:

The report (CAT Report 875)

CBCPS Evaluation Brief, CAT Written Scheme of Investigation

Original site record (Feature and layer sheets, Finds record, plans)

Site digital photos and log, Architectural plans, Attendance register, Risk assessment

11 Archive deposition

The paper and digital archive is currently held by the Colchester Archaeological Trust at Roman Circus House, Roman Circus Walk, Colchester, Essex, CO2 7GZ, but will be permanently deposited with Colchester Museum under accession code: 2015.85.

© Colchester Archaeological Trust 2015

Alan Bender Ltd
Jess Tipper, Colchester Borough Council Planning Services



Colchester Archaeological Trust

Roman Circus House
Roman Circus Walk,
Colchester,
Essex CO2 7GZ

tel.: 07436 273 304

email: archaeologists@catuk.org

Checked by: Howard Brooks

Date: 21.10.2015

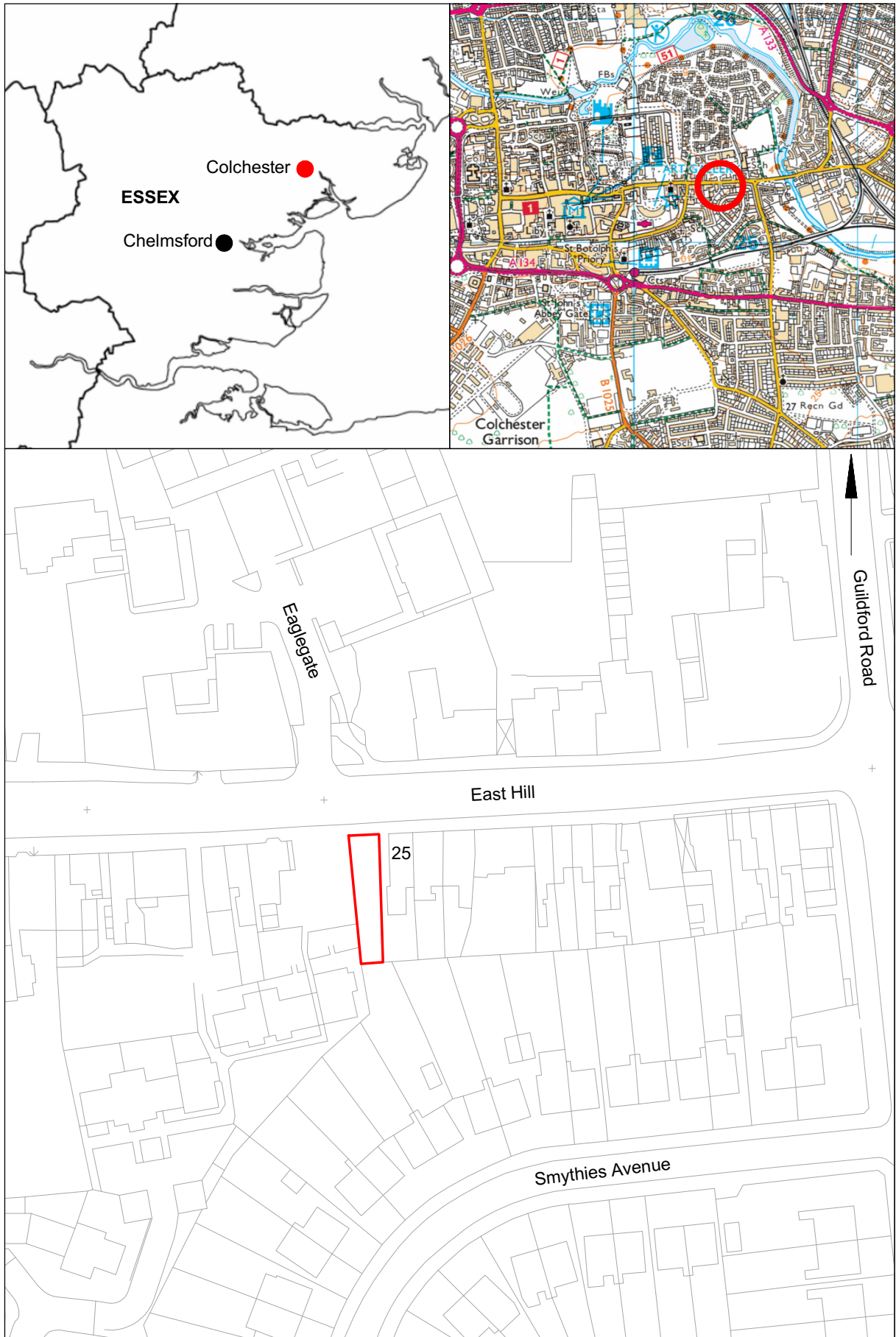


Fig 1 Site location.

© Crown copyright. All rights reserved. Licence number 100039294.



E600385.727
N225256.699

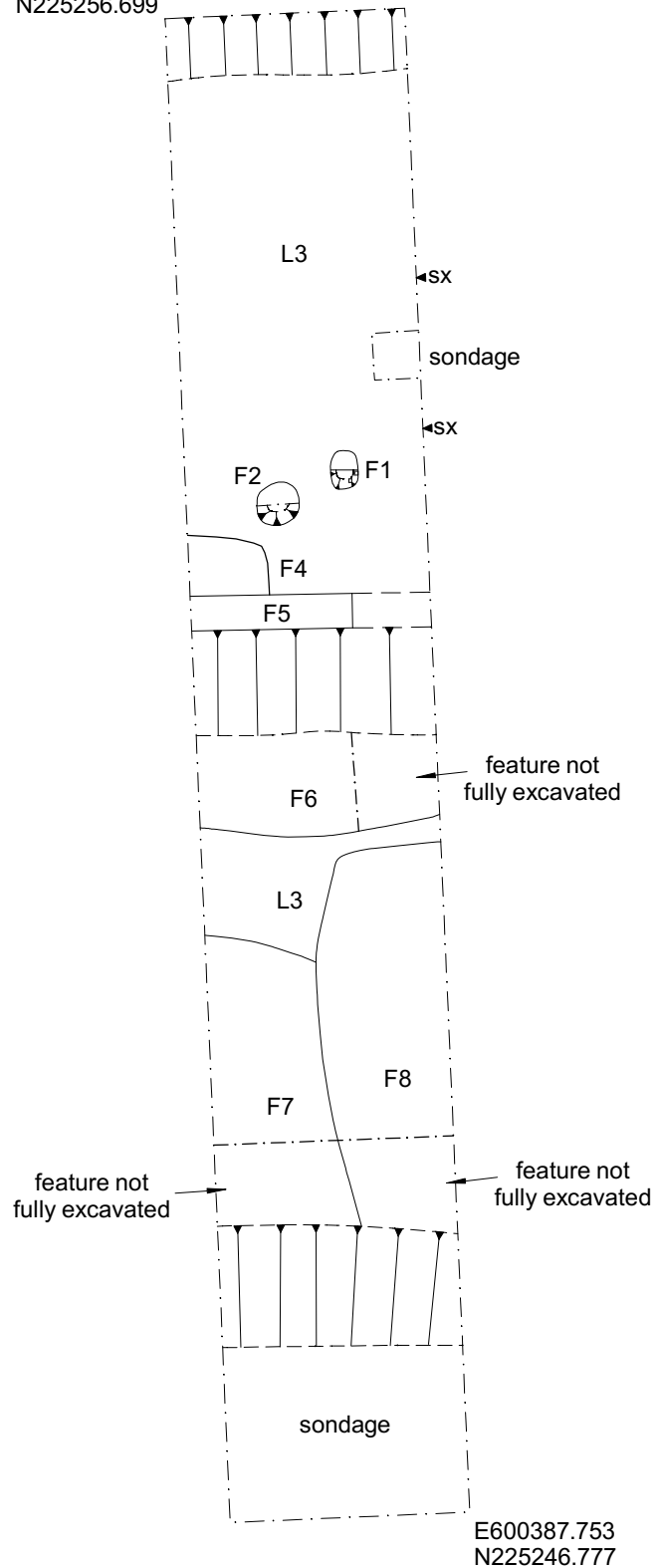
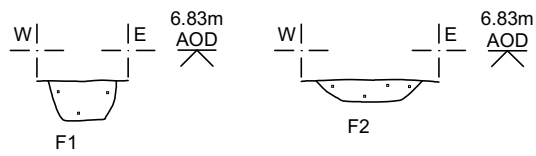
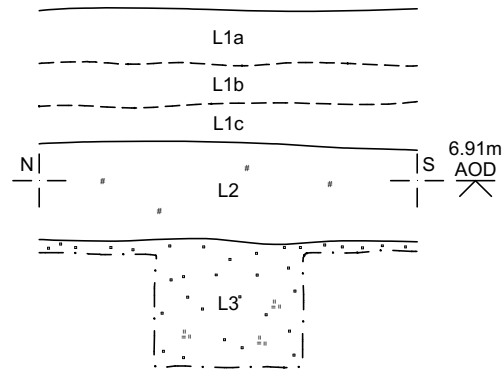


Fig 2 Evaluation results.



Key
 # charcoal
 =|| clay
 :·: sand



Fig 3 Representative trench section and sections of F1 and F2.

Essex Historic Environment Record/ Essex Archaeology and History

Summary sheet

Address: 25 East Hill, Colchester	
Parish: Colchester	District: Colchester
NGR: TM 0038 2525	Site code: CAT project ref.: 15/08h UAD ref: ECC3059 OASIS ref: colchest3-221829
Type of work: Evaluation	Site director/group: Colchester Archaeological Trust
Date of work: 22nd September 2015	Size of area investigated: 8m by 1.8m trench
Location of curating museum: Colchester museum accession code COLEM: 2015.85	Funding source: Owner
Further seasons anticipated? no	Related UAD/SMR number: EHER 31127 UAD EVT 586 Scheduled Monument 1003772
Final report: CAT Report 875	
Periods represented: Post-Medieval, Modern	
Summary of fieldwork results: An archaeological trial-trenching evaluation undertaken in advance of the erection of a new two-storey detached building on land adjacent to 25 East Hill revealed six post-medieval and one modern feature. A post-medieval wall foundation made from 17th-century bricks probably formed the base of a plinth for either a timber-framed structure or outbuilding. The remaining five pits and one pit/posthole were typically associated with yard and garden deposits of the post-medieval to modern periods. There is no evidence of any activity before the post-medieval period except for a small quantity of residual Roman and medieval finds.	
Previous summaries/reports: None	
CBC monitor: Jess Tipper	
Keywords: Post-Medieval, Modern	Significance: -
Author of summary: Laura Pooley	Date of summary: October 2015

Written Scheme of Investigation (WSI)
for archaeological evaluation on land adjacent to
25 East Hill, Colchester, Essex, CO1 2QX

NGR: TM 0038 2525 (centre)

Planning reference: 150770

Client: Alan Bender Ltd

Agent: n/a

Curating Museum: Colchester

Museum accession code: 2015.85

UAD Event number: tbc

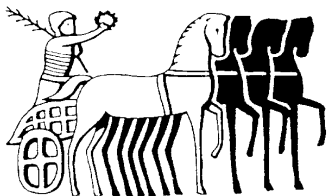
CAT Project code: 15/08h

OASIS Project id: colchest3-221829

Site Manager: Ben Holloway

CBC Monitor: Jess Tipper

This WSI written: 27.08.2015



COLCHESTER ARCHAEOLOGICAL TRUST,
Roman Circus House,
Roman Circus Walk
Colchester,
Essex, C02 7GZ
tel: 01206 501785
email: archaeologists@catuk.org

Site Location and Description

The proposed development site lies on the south side of East Hill, Colchester, adjacent to 25 East Hill, approximately 200m east of the walled Roman town. The site is currently a tarmac-covered access road to the rear of 25 East Hill. The site is centred on NGR TM 0038 2525.

Proposed work

The development comprises the construction of a two-storey building containing two apartments.

Archaeological Background

The following archaeological background draws on the Colchester Archaeological Trust report archive, the Colchester Urban Archaeological Database (UAD) and the Essex Historic Environment Record accessed via the Heritage Gateway:

East Hill is an area of high archaeological interest, an historic routeway into the Roman and later town. This is emphasized by the high number of listed buildings within 100m of the proposed development. On the south side of East Hill nos. 15-42 form a chain of Grade II listed buildings ranging in date from the early 16th century to the 19th century. On the north side of the street, starting with the Goat and Boot public house and continuing up the hill through nos. 71-75 (including the Eaglegate Brewery) these Grade II listed buildings span the 17th – 19th centuries. The building adjacent to the development site, no. 25 East Hill dates to the 17th century (EHER 31127).

Little archaeological work has been carried out on East Hill; Hull noted in 1958 that no sign of Roman metallurgy had hitherto been observed beneath the line of the modern street and that remains true today. P.G. Laver recorded a section of Roman road just to the north of the intersection of East Hill and Guildford Road in 1928 (Hull 11; UAD EVT 586). A watching brief in 2003-4 at 60 East Hill (formerly the JET petrol filling station) found no trace of this road or any other archaeological feature (CAT Report 282). What little work has been carried out has been concentrated further up the hill, in the vicinity of the East Gate. In 2003 a trial-trenching evaluation was undertaken at 1-2 East Hill adjacent to the town wall (Scheduled Monument 1003772). This identified post-medieval pits containing domestic refuse but no evidence from prior to the post-medieval period (CAT Report 226). The lack of Roman or medieval remains at this location is interpreted as a result of the terracing that took place around the gate when the hill's gradient was reduced in the early 19th century. A watching brief at the rear of 9 East Hill in 2008 uncovered evidence for late medieval/post-medieval wall foundations but revealed no evidence for Roman remains within 800mm of the surface (CAT Report 469).

The dearth of sub-surface archaeological remains associated with the lower part of East Hill is probably explained by the presence of the late medieval and post-medieval buildings that line the street. Many of these have cellars which will have destroyed the archaeological record but others, in particular the timber-framed structures dating to the 16th and 17th centuries, may have preserved medieval and earlier deposits lying beneath them. The 1st edition 6 inch Ordnance Survey for this part of Colchester shows that the development area has been an access point to the yard behind no. 25 since at least the 1870s and probably since the plot was built. This suggests the development site will have a high survival of medieval and earlier archaeology, although it should be noted that a significant number of service runs appear to have been located through the area.

Planning Background

A planning application was submitted to Colchester Borough Council in April 2015 for the proposed work (above: Planning reference 150770). As the site lies within an area highlighted by the UAD as having a high potential for archaeological deposits, a full archaeological

condition was recommended by Colchester Borough Council Archaeological Advisor (CBCAA). The recommended archaeological condition is based on the guidance given in the *National Planning Policy Framework* (DCLG 2012) and states:

"No works shall take place until the implementation of a programme of archaeological work has been secured, in accordance with a Written Scheme of Investigation that has been submitted to and approved, in writing, by the Local Planning Authority. The Scheme shall include an assessment of significance and research questions; and:

- a. The programme and methodology of site investigation and recording.*
- b. The programme for post investigation assessment.*
- c. Provision to be made for analysis of the site investigation and recording.*
- d. Provision to be made for the publication and dissemination of the analysis and records of the site investigation.*
- e. Provision to be made for archive deposition of the analysis and records of the site investigation.*
- f. Nomination of a competent person or persons/organisation to undertake the works.*

The site investigation shall thereafter be completed prior to development, or in such other phased arrangement, as agreed, in writing, by the Local Planning Authority. The development shall not be occupied or brought into use until the site investigation and post investigation assessment has been complete in accordance with the programme set out in the Written Scheme of Investigation approved and the provision made for analysis, publication and dissemination of results and archive deposition has been secured. Reason: To safeguard archaeological assets within the approved development boundary from impacts relating to any groundworks associated with the development scheme and to ensure the proper and timely investigation, recording, reporting and presentation of archaeological assets affected by this development, in accordance with Policy SD1 and ENV1 of Colchester Borough Council's Core Strategy (2008)."

Requirement for Work

The required archaeological work involves undertaking an evaluation of linear trial-trenching of the development area. A single linear trench 8m long and 1.8m wide, aligned north to south is to be excavated across the footprint of the proposed building (see Fig 1). The mechanical stripping of the trench will involve using a flat-edged ditching bucket whilst under constant archaeological supervision. Details are given in a Project Brief written by CBCAA (Brief for a Trenched Archaeological Evaluation at Adjacent to, 25 East hill, Colchester, CO1 2QX - CBC 2015). Once the strip is complete a meeting will be held on site with CBCAA, the developer and CAT to discuss what further work is needed.

It is anticipated that this work will comprise the complete excavation and recovery of any burials on the site and standard sample excavation of all other features. If unexpected remains are encountered the CBCAA will be notified immediately, potentially resulting in amendments to the brief.

Specific research aims are to:

- Identify the date, approximate form and purpose of any archaeological deposit, together with its likely extent, localised depth and quality of preservation.
- Evaluate the likely impact of past land uses, and the possible presence of masking colluvial/alluvial deposits.
- Establish the potential for the survival of environmental evidence.
- Provide sufficient information to construct an archaeological conservation strategy, dealing with preservation, the recording of archaeological deposits, working practices, timetables and orders of cost.

General Methodology

All work carried out by CAT will be in accordance with:

- professional standards of the Chartered Institute for Archaeologists, including its *Code of Conduct* (CIfA 2014a-c)
- Standards and Frameworks published by East Anglian Archaeology (Gurney 2003, Medlycott 2011)
- required standards of fieldwork in Colchester Borough (CM 2008a, b)
- relevant Health & Safety guidelines and requirements (CAT 2014)
- the Project Brief issued by CBCAA (CBC 2015)

Professional CAT field archaeologists will undertake all specified archaeological work, for which they will be suitably experienced and qualified.

Notification of the supervisor/project manager's name and the start date for the project will be provided to CBCAA one week before start of work.

Unless it is the responsibility of other site contractors, CAT will study mains service locations and avoid damage to these.

A project or site code will be sought from the curating museum, as appropriate to the project. This code will be used to identify the finds bags and boxes, and the project archive when it is deposited at the curating museum.

Written Scheme of Investigation

Prior to start of work, a Written Scheme of Investigation will be submitted to CBCAA. The WSI will describe in appropriate detail how the *Brief* from CBCAA will be implemented in fieldwork, post-excavation, reporting and publication stages.

The WSI shall be submitted to CBCAA, and fieldwork will not commence prior to approval of WSI from CBCAA.

The WSI will include a location plan of the development site showing the area of proposed excavation or trench layout.

OASIS Record

At the start of work (immediately before fieldwork commences) an OASIS online record <http://ads.ahds.ac.uk/project/oasis/> will be initiated and key fields completed on Details, Location and Creators forms.

At the end of the project all parts of the OASIS online form will be completed for submission to CBCAA and EHER. This will include an uploaded .PDF version of the entire report.

Staffing

The number of field staff for this project is estimated as follows – one archaeologist to continually monitor the strip with an additional archaeologist for archaeological contexts that require excavation.

In charge of day-to-day site work: Ben Holloway.

Evaluation methodology

There will be sufficient on-site attendance by CAT staff to maintain a watch on all contractors' ground reduction, footings work, service trench digging, and all related works to record, excavate or sample (as necessary) any archaeological features or deposits.

All topsoil removal and ground reduction, which will be done with a toothless bucket.

If archaeological features or deposits are uncovered, time will be allowed for these to be planned and recorded.

If any features or deposits uncovered are to be destroyed by the proposed development, time will be allowed for these features to be excavated by hand. This includes a 50% sample of discrete features (pits, etc) and 10% of linear features (ditches, etc).

Fast hand-excavation techniques involving (for instance) picks, forks and mattocks will not be used on complex stratigraphy.

A metal detector will be used to examine the site, spoil heaps, and the finds recovered.

Individual records of excavated contexts, layers, features or deposits will be entered on pro-forma record sheets. Registers will be compiled of finds, small finds and soil samples.

All features and layers or other significant deposits will be planned, and their profiles or sections recorded. The normal scale will be site plans at 1:20 and sections at 1:10, unless circumstances indicate that other scales would be appropriate.

Site surveying

Normal scale for archaeological site plans and sections is 1:20 and 1:10 respectively, unless circumstances indicate that other scales would be more appropriate.

The site grid will be tied into the National Grid. Corners of excavation areas and trenches will be located by NGR coordinates.

Environmental sampling policy

The number and range of samples collected will be adequate to determine the potential of the site, with particular focus on palaeoenvironmental remains including both biological remains (e.g. plants, small vertebrates) and small sized artefacts (e.g. smithing debris), and to provide information for sampling strategies on any future excavation. Samples will be collected for potential micromorphological and other pedological sedimentological analysis. Environmental bulk samples will be 40 litres in size (assuming context is large enough)

Sampling strategies will address questions of:

- the range of preservation types (charred, mineral-replaced, waterlogged), and their quality
- concentrations of macro-remains
- and differences in remains from undated and dated features
- variation between different feature types and areas of site

CAT has an arrangement with Val Fryer (Loddon) whereby any potentially rich environmental layers or features will be appropriately sampled as a matter of course. Val Fryer will do any processing and reporting.

Should any complex, or otherwise outstanding deposits be encountered, VF will be asked onto site to advise. Waterlogged 'organic' features will always be sampled. In all cases, the advice of VF and/or the English Heritage Regional Advisor in Archaeological Science (East of England) on sampling strategies for complex or waterlogged deposits will be followed, including the taking monolith samples.

Human remains

Policy depends on the age of the burial. If it is clear from their position, context, depth, or other factors that the remains are ancient, then normal procedure is to apply to the Department of Justice for a licence to remove them. In that case, conditions laid down by the license will be followed.

If it seems that the remains are not ancient, then the coroner, the client, and CBCAA will be informed, and any advice and/or instruction from the coroner will be followed.

Allowance will be made in the budget and timetable to allow a human bone specialist to visit site to advise on recording and lifting human remains (inhumations), and for an experienced conservator to visit site and advise on recording and lifting of fragile grave goods.

Photographic record

Will include both general and feature-specific photographs, the latter with scale and north arrow. A photo register giving context number, details, and direction of shot will be prepared on site, and included in site archive.

Post-excavation assessment

If a post-excavation assessment is required by CBCAA, it will be normally be submitted within 2 months of the end of fieldwork, or as quickly as is reasonably practicable and at a time agreed with CBCAA.

Where archaeological results do not warrant a post-excavation assessment, preparation of the normal site report will begin. This is usually a PDF report available as hard copy, and also published on the CAT website and on the OASiS website.

Finds

All significant finds will be retained.

All finds, where appropriate, will be washed and marked with site code and context number.

Stephen Benfield (CAT) normally writes our finds reports. Some categories of finds are automatically referred to other CAT specialists:

animal bones (small groups): Adam Wightman

flints: Adam Wightman

or to outside specialists:

small finds, metalwork, coins, etc: Nina Crummy.

animal bones (large groups) and human remains: Julie Curl (*Sylvanus*)

environmental processing and reporting: Val Fryer (Loddon)

conservation of finds: staff at Colchester Museum

Other specialists whose opinion can be sought on large or complex groups include:

Roman brick/tile: Ernest Black

Roman glass: Hilary Cool

Prehistoric pottery: Paul Sealey

Other: EH Regional Adviser in Archaeological Science (East of England).

All finds of potential treasure will be removed to a safe place, and the coroner informed immediately, in accordance with the rules of the Treasure Act 1996. The definition of treasure is given in pages 3-5 of the Code of Practice of the above act. This refers primarily to gold or silver objects.

Requirements for conservation and storage of finds will be agreed with the appropriate museum prior to the start of work, and confirmed to CBCAA.

End of Fieldwork, and Report

Notification will be given to CBCAA when the fieldwork has been completed.

An appropriate report will be prepared to minimum acceptable standards outlined in *Management of Research Projects in the Historic Environment* (English Heritage 2006).

The draft report will be submitted within 6 months of the end of fieldwork for approval by CBCAA.

Final report will normally be submitted to CBCAA as PDF, but printed copy can be provided on request.

The report will contain:

- The aims and methodology adopted in the course of the archaeological project
- Location plan of site and excavated area in relation to the proposed development. At least two corners of each trench / excavated area will be given 10 figure grid references.
- A section/s drawings showing depth of deposits from present ground level with Ordnance Datum, vertical and horizontal scale.
- Detailed archaeologists results including list of sites resulting from an EHER/UAD search, and historic maps to show changes and development of site, with a suitable conclusion and discussion and results referring to Regional Research Frameworks (Medlycott 2011).
- All specialist reports or assessments
- A concise non-technical summary of the project results.
- As Appendices, the OASIS entry and the WSI.

An EHER summary sheet will also be completed within four weeks and attached as Appendix to the site report, which will be emailed as PDF to CBCAA.

Results will be published, to at least a summary level (i.e. round-up in *Essex Archaeology & History*) in the year following the archaeological field work. An allowance will be made in the project costs for the report to be published in an adequately peer reviewed journal or monograph series

Archive Deposition

A site archive will be prepared to minimum acceptable standards given in CM 2008, ClfA 2014b, and MoRPHE (EH 2006).

The requirements for archive storage shall be agreed with the curating museum.

If the finds are to remain with the landowner, a full copy of the archive will be housed with the curating museum.

The archive will be deposited with the appropriate museum within 3 months of the completion of the final publication report, with a summary of the contents of the archive supplied to CBCAA.

A Drawing Interchange File (.dxf) will be supplied to for integration in the UAD/HER. AutoCAD files will also exported and saved into a format that can be imported into MapInfo.

Monitoring

CBCAA will be responsible for monitoring progress and standards throughout the project, and will be kept regularly informed during fieldwork, post-excavation and publication stages.

Notification of the start of work will be given to CBCAA one week in advance of its commencement.

Any variations in this WSI will be agreed with CBCAA prior to them being carried out.

CBCAA will be notified when the fieldwork is complete.

The involvement of CBCAA shall be acknowledged in any report or publication generated by this project.

References

CAT Report 226	2003	<i>An archaeological evaluation at 1-2 East Hill, Colchester, Essex February 2003.</i> CAT archive report, by B Holloway (May 2003)
CAT Report 282	2004	<i>Watching brief report: 60 East Hill (formerly Jet petrol filling station), Colchester, Essex.</i> CAT archive report, by K Orr (August 2004)
CAT Report 469	2008	<i>Watching brief at 9 East Hill, Colchester, Essex.</i> CAT archive report, by A Wightman (April 2008)
CBCAA	2015	<i>Brief for a Trenched Archaeological Evaluation at Adjacent to, 25 East Hill,</i>

		<i>Colchester, CO1 2QX</i> by J Tipper
CIfA	2014a	<i>Standard and Guidance for an archaeological excavation</i>
CIfA	2014b	<i>Standard and guidance for the creation, compilation, transfer and deposition of archaeological archives</i>
CIfA	2014c	<i>Standard and guidance for the collection, documentation, conservation and research of archaeological materials</i>
CM	2008	<i>Guidelines on standards and practices for archaeological fieldwork in the Borough of Colchester</i>
CM	2008	<i>Guidelines on the Preparation and Transfer of Archaeological Archives to Colchester & Ipswich Museums</i>
DCLG	2012	<i>National Planning Policy Framework</i>
English Heritage	2006	<i>Management of Research Projects in the Historic Environment (MoRPHE)</i>
Gurney, D	2003	<i>Standards for field archaeology in the East of England. East Anglian Archaeology Occasional Papers 14 (EAA 14).</i>
Hull, M R	1958	<i>Roman Colchester</i> , Research Committee of the Society of Antiquaries of London Report XX
Medlycott, M	2011	<i>Research and archaeology revisited: A revised framework for the East of England. East Anglian Archaeology Occasional Papers 24 (EAA 24)</i>

Chris Lister



Colchester Archaeological Trust,
Roman Circus House,
Roman Circus Walk,
Colchester,
Essex, C02 2GZ

tel: 01206 501785
email: cl@catuk.org

OASIS DATA COLLECTION FORM: England

[List of Projects](#) | [Manage Projects](#) | [Search Projects](#) | [New project](#) | [Change your details](#) | [HER coverage](#) | [Change country](#) | [Log out](#)

Printable version

OASIS ID: colchest3-221829

Project details

Project name	An evaluation on Land adjacent to 25 East Hill, Colchester
Short description of the project	An archaeological trial-trenching evaluation undertaken in advance of the erection of a new two-storey detached building on land adjacent to 25 East Hill revealed six post-medieval and one modern feature. A post-medieval wall foundation made from 17th-century bricks probably formed the base of a plinth for either a timber-framed structure or outbuilding. The remaining five pits and one pit/posthole were typically associated with yard and garden deposits of the post-medieval to modern periods. There is no evidence of any activity before the post-medieval period except for a small quantity of residual Roman and medieval finds.
Project dates	Start: 22-09-2015 End: 22-09-2015
Previous/future work	No / Not known
Any associated project reference codes	150770 - Planning Application No.
Any associated project reference codes	15/08h - Contracting Unit No.
Any associated project reference codes	ECC3059 - HER event no.
Any associated project reference codes	COLEM:2015.85 - Museum accession ID
Type of project	Field evaluation
Site status	None
Current Land use	Other 11 - Thoroughfare
Monument type	WALL FOUNDATION Post Medieval
Monument type	PITS Post Medieval
Monument type	PIT Modern

Significant Finds	POTTERY Post Medieval
Significant Finds	POTTERY Medieval
Significant Finds	POTTERY Roman
Significant Finds	CERAMIC BUILDING MATERIAL Roman
Significant Finds	BRICK AND PEG TILE Post Medieval
Significant Finds	ANIMAL BONE Uncertain
Significant Finds	COPPER ALLOY JETTON Post Medieval
Significant Finds	COPPER ALLOY DRESS PIN Post Medieval
Methods & techniques	"Sample Trenches"
Development type	Urban residential (e.g. flats, houses, etc.)
Prompt	Planning condition
Position in the planning process	After full determination (eg. As a condition)

Project location

Country	England
Site location	ESSEX COLCHESTER COLCHESTER Land adjacent to 25 East Hill, Colchester
Postcode	CO1 2QX
Study area	17.8 Square metres
Site coordinates	TM 0038 2525 51.889204998939 0.912243212825 51 53 21 N 000 54 44 E Point

Project creators

Name of Organisation	Colchester Archaeological Trust
Project brief originator	CBC Archaeological Officer
Project design originator	Chris Lister
Project director/manager	Colchester Archaeological Trust
Project supervisor	Ben Holloway
Type of sponsor/funding body	Developer
Name of sponsor/funding body	Alan Bender Ltd

Project archives

Physical Archive ID	COLEM:2015.85
---------------------	---------------

Physical Contents	"Animal Bones", "Ceramics", "Metal", "other"
Digital Archive recipient	Colchester Museum
Digital Archive ID	COLEM:2015.85
Digital Media available	"Images raster / digital photography"
Paper Archive recipient	Colchester Museum
Paper Archive ID	COLEM:2015.85
Paper Media available	"Context sheet", "Drawing", "Miscellaneous Material", "Photograph", "Plan", "Report", "Section"

Project bibliography 1

Publication type	Grey literature (unpublished document/manuscript)
Title	Archaeological evaluation by trial-trenching on land adjacent to 25 East Hill, Colchester, Essex, CO1 2QX: September 2015
Author(s)/Editor(s)	Pooley, L.
Other bibliographic details	CAT Report 875
Date	2015
Issuer or publisher	Colchester Archaeological Trust
Place of issue or publication	Colchester
Description	A4 ringbound loose leaf
URL	http://cat.essex.ac.uk/all-reports.html
Entered by	Laura Pooley (lp@catuk.org)
Entered on	22 October 2015

OASIS:

Please e-mail [Historic England](mailto:historic@oasis.ac.uk) for OASIS help and advice

© ADS 1996-2012 Created by [Jo Gilham](#) and [Jen Mitcham](#), email Last modified Wednesday 9 May 2012

Cite only: <http://www.oasis.ac.uk/form/print.cfm?id=227481> for this page