

**Historic building recording at
the Bricklayers Arms, 61 Hadham Road,
Bishops Stortford,
Hertfordshire CM23 2QY**

April 2018



report prepared by Mark Baister

**commissioned by
St James Contracts Ltd**

CAT project ref.: 18/03q
NGR: TL 48321 21460 (c)
Planning reference: 3/17/0350/FUL
OASIS project id: colchest3-312761



Colchester Archaeological Trust
Roman Circus House,
Roman Circus Walk,
Colchester,
Essex, CO2 7GZ

tel.: 01206 501785
email: mb@catuk.org

CAT Report 1263
May 2018

Contents

1	Summary	1
2	Introduction	1
3	Aims	1
4	Methodology	2
5	Historical background	2
6	Building recording descriptive record	7
7	Discussion	18
8	Acknowledgements	20
9	References	20
10	Abbreviations and glossary	21
11	Archive deposition	21
12	Contents of archive	21

Appendices

Appendix 1: Full digital photographic record (images on accompanying CD)	23
Appendix 2: Full black and white photographic record (images in archive)	31

Figures after p32

OASIS Data Collection Form

HHER Summary Sheet

List of maps

	pg
Map 1 1879 1st edition 6-inch OS map. Bricklayers Arms highlighted in red.	2
Map 2 1896 OS map 1:2500. Bricklayers Arms highlighted in red, extensions in blue.	3
Map 3 1916 OS map 1:2500. Bricklayers Arms highlighted in red, extensions in blue.	4
Map 4 1938 6-inch OS map. Bricklayers Arms highlighted in red, extensions in blue.	5
Map 5 1946 6-inch OS map. Bricklayers Arms highlighted in red, extensions in blue.	5

List of photographs reproduced in text

	pg
Photograph 1 The Bricklayers Arms in the early 20th century. 63 and 65 Hadham Road (since demolished) visible to rear of building. Extensions A and B also visible. Pub owned by Benskin's Brewery. Taken from https://pubshistory.com/HertsPubs/BishopsStortford/BricklayersArms.shtml	3
Photograph 2 Bricklayers Arms around the time of World War 1 (note the soldiers to the left of frame). ?Original windows visible. Pub still owned by Benskin's Brewery. Note large double doors leading into extension B (to left of pub). Taken from http://www.stortfordhistory.co.uk/guide5/bells-hill/ .	4
Photograph 3 Bricklayers Arms in 1971. Pub sign visible for first time (with different logo than today). Also visible are the horned sash-windows on the pub and extension A. Photograph taken facing south-east. From www.geograph.org.uk .	6
Photograph 4 Bricklayers Arms in 1973. Inserted windows in place of original double doorway on the pub, and on extension B, both visible. Pub owned by Ind Coope. From www.geograph.org.uk .	6
Photograph 5 Exterior of Bricklayers Arms showing north- and south-east elevations. Photograph taken facing west.	7

Photograph 6	Exterior of Bricklayers Arms showing extension B in foreground. Photograph taken facing north-east.	8
Photograph 7	South-east elevation of Bricklayers Arms. Photograph taken facing north-west.	8
Photograph 8	Detail of pub sign. Photograph taken facing north-west.	9
Photograph 9	Detail of fixed and sash-windows on south-east elevation. Photograph taken facing north-west.	9
Photograph 10	Detail of vents above fixed windows on south-east elevation. Photograph taken facing north-west.	10
Photograph 11	Detail of decoration on apex of metal post between windows on the north-east elevation of pub. Photograph taken facing south-west.	10
Photograph 12	Interior of cellar, showing hatch onto pavement and chute into cellar. Photograph taken facing north-west.	11
Photograph 13	Entrance into cellar from ground-floor of pub, with four-panel door visible to right. Photograph taken facing north-west.	11
Photograph 14	Interior of cellar, showing brick arch supporting chimney-stack on upper floors. Photograph taken facing east.	12
Photograph 15	Interior of extension B, showing dado-rail and blocked fireplace. Photograph taken facing north-west.	12
Photograph 16	Vertical-planked door leading into northern bar from foyer. Photograph taken facing north-east.	13
Photograph 17	Four-panel door leading to the southern bar from the foyer (the decal labelling this as the "Public Bar" is a modern addition, as this bar would almost certainly have been the lounge bar). Photograph taken facing south-west.	13
Photograph 18	Detail of bar in northern bar of pub. Photograph taken facing west.	13
Photograph 19	Metal post in northern bar, supporting the first-floor. Note ornate decoration at apex. Photograph taken facing north-east.	14
Photograph 20	Interior ground-floor of extension A, showing the blocked fireplace, door into corridor and stairway to first-floor. Photograph taken facing south.	14
Photograph 21	Original four-panel door leading into northern bedroom on first-floor of pub. Photograph taken facing north-east.	15
Photograph 22	Blocked fireplace in living room in first-floor of pub (replaced with electric heater). Photograph taken facing north.	15
Photograph 23	Interior of northern bedroom in pub, showing original door (to left) and crawl-space into loft of extension A (to right).	16
Photograph 24	Loft above extension A. Lath and plaster visible behind panelling. Chimney-stack visible to right. Photograph taken facing north-west.	16
Photograph 25	Detail of purlin on north-west pitch of roof with two adjacent nailed scarf joints. Also at top of the frame visible are rafters with modern supporting timbers. Photograph taken facing south-east.	17
Photograph 26	Northern chimney-stack in roof. Also visible is rudimentary hand-sawn collar and clasped purlins. Photograph taken facing east.	17

List of figures

- Fig 1 Site location.
- Fig 2 Plan of site showing the footprint of the pub and its three extensions.
- Fig 3 Basement plan of extension A. Location and directions of photographs reproduced in the text shown.
- Fig 4 Ground-floor of the pub and its three extensions. Location and directions of photographs reproduced in the text shown.
- Fig 5 First-floor of the pub and extensions A and C. Location and directions of photographs reproduced in the text shown.
- Fig 6 South-east and north-east elevations of the pub and its extensions.
- Fig 7 North-west and south-west elevations of the pub and its extensions.

1 Summary

A programme of historic building recording was carried out by Colchester Archaeological Trust at the Bricklayers Arms, 61 Hadham Road, Bishops Stortford, Hertfordshire in April 2018.

The Bricklayers Arms was constructed in the mid-19th century. It has three extensions, two constructed in the late 19th century and one in the 1960s. Extensive alteration to both the interior and exterior has removed almost all original features in the pub, although an original door remains on the first-floor. The Bricklayers Arms was constructed to provide a place of refreshment for the workers at the nearby brickworks, from which it received its name.

2 Introduction (Fig 1)

This is the archive report of a historic building recording at the Bricklayers Arms in advance of its proposed demolition. The recording work was commissioned by St James Contracts Ltd, and carried out by Colchester Archaeological Trust (CAT) in April 2018. The Bricklayers Arms is located at 61 Hadham Road in Bishops Stortford, at NGR TL 48321 21460 (Fig 1).

A planning application (planning ref. 3/17/0350/FUL) was submitted to East Hertfordshire Council in February 2017 proposing the demolition of the Bricklayers Arms public house and the erection of a residential apartment building with nine dwellings. In response to this application, the Historic Environment Advisor (HEA) of Hertfordshire County Council (HCC), on behalf of East Hertfordshire Council, recommended that a Historic England Level 2 building survey be made of the building prior to its demolition. This recommendation was given based on the building's historical importance and its presence within Bishops Stortford's town conservation area. This recommendation was made based on the National Planning Policy Framework (DCLG 2012).

A Written Scheme of Investigation (WSI) for the building recording was prepared by Colchester Archaeological Trust (CAT 2018) and agreed with the HEA. All work was carried out in accordance with this WSI.

All work was carried out according to standards and practices contained in the Chartered Institute for Archaeologists' *Standard and guidance for the collection, documentation, conservation and research of archaeological materials* (2014a), *Standard and guidance for archaeological investigation and recording of standing buildings or structures* (2014b), *Management of research projects in the historic environment* (Historic England 2015), *Standards for field archaeology in the East of England* (EAA 14) and *Research and Archaeology Revised: A Revised Framework for the East of England* (EAA 24). In addition, the guidelines contained in *Understanding Historic Buildings, A guide to good recording practice* (Historic England 2016) were followed.

3 Aims

The aim of the building recording was to provide a detailed record and assessment of the building prior to its demolition. The building recording was carried out to Level 2 (Historic England 2016).

In particular the record considered:

- Plan and form of the site.
- Materials and method of construction.
- Date(s) of the structure.
- Original function and layout.
- Original and later fixtures and fittings.
- The significance of the site in its immediate local context.

4 Methodology

The following are included in this report:

- A documentary, cartographic and pictorial survey of the evidence pertaining to the history and evolution of the Bricklayers Arms.
- A large-scale block plan of the site.
- Annotated elevations of the remains at a scale of 1:100.
- A description of the building. The description addresses features such as materials, dimensions, method of construction and phasing.
- A photographic record, comprising digital and black and white photographs of both general shots and individual features. Selected examples of the photographic record are clearly tied into the drawn record and reproduced as fully annotated photographic plates supporting the text. The photographic record is accompanied by photographic registers detailing location and direction of shot (Appendices 1 and 2).

5 Historical background (Figs 1 and 2)

The following archaeological background draws on cartographic sources, the Hertfordshire Historic Environment Record (HER) accessed via the Heritage Gateway, and local history websites.

Despite lying within the town conservation area and its corresponding area of archaeological significance, the Bricklayers Arms is not listed.

The pub first appears on the 1st edition OS map in 1879 (Map 1). It is not present on the 1839 tithe map. There are records of the building, described as a pub, being owned by a MR W Jeeves in 1867 (<http://www.stortfordhistory.co.uk>), providing a potential timespan of 28 years for the pub's construction.

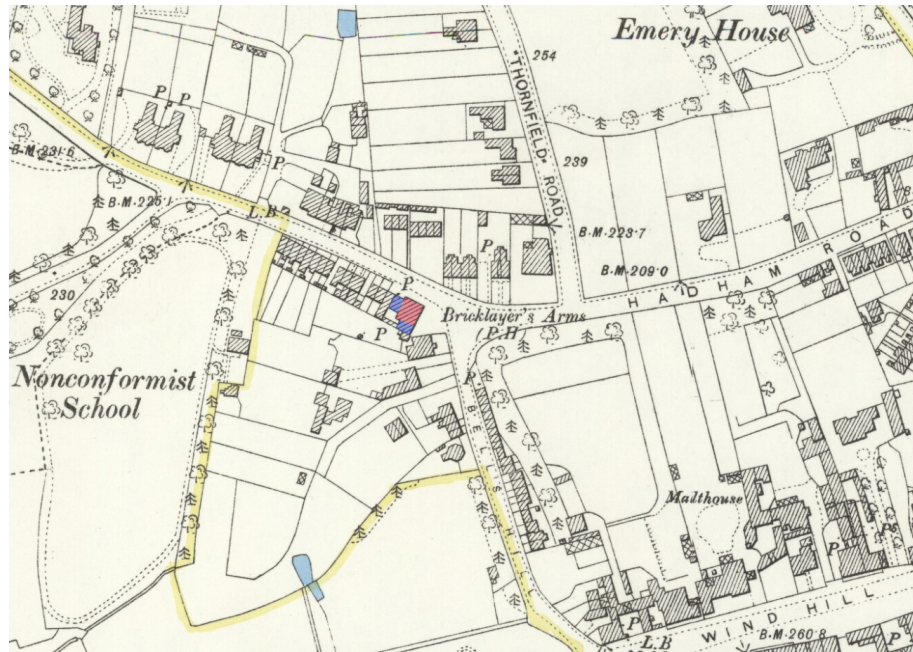
To the south-west of the site on the 1st edition OS map is a brickworks with a substantial rectangular kiln. This is the remains of a (since demolished) post-medieval brickworks (HER number 6855). These brickworks are the origin of the name of the pub. This map shows the pub as having an OS benchmark on its north-east corner, something that is not present on later maps or the structure as it stands today. The footprint of the pub appears to be smaller than in later mapping (see below), which perhaps suggests the projecting ground-floor is a later addition.



Map 1 1879 1st edition 6-inch OS map. Bricklayers Arms highlighted in red.

At the time of the 1st edition OS map the pub is free-standing but by the time the 2nd edition OS map is surveyed in 1896 (Map 2), it has been extended to the west and south, causing it to abut 63 Hadham Road. These extensions were probably added by the local Bishops Stortford brewery Hawkes & Co. when they purchased the pub in the late 19th century (<http://www.stortfordhistory.co.uk>).

Two early 20th-century photographs of the Bricklayers Arms show the pub as being owned by Benskins Brewery (Photographs 1 and 2). Benskins Brewery purchased Hawkes & Co in 1898 (<http://www.hertsmemories.org.uk>). They also show that extension B originally had large double doors on its south-east elevation.



Map 2 1896 OS map 1:2500. Bricklayers Arms highlighted in red, extensions in blue.

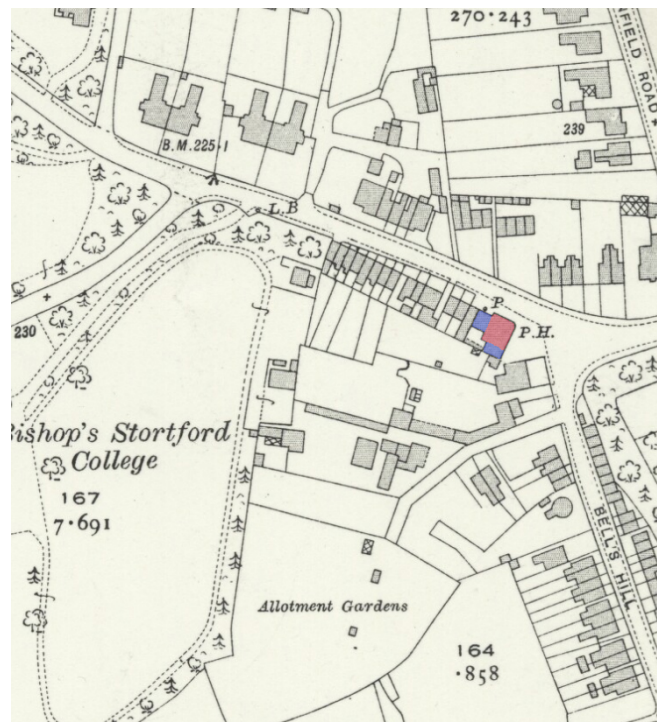


Photograph 1 The Bricklayers Arms in the early 20th century. 63 and 65 Hadham Road (since demolished) visible to rear of building. Extensions A and B also visible. Pub owned by Benskin's Brewery. Taken from <https://pubshistory.com/HertsPubs/BishopsStortford/BricklayersArms.shtml>.

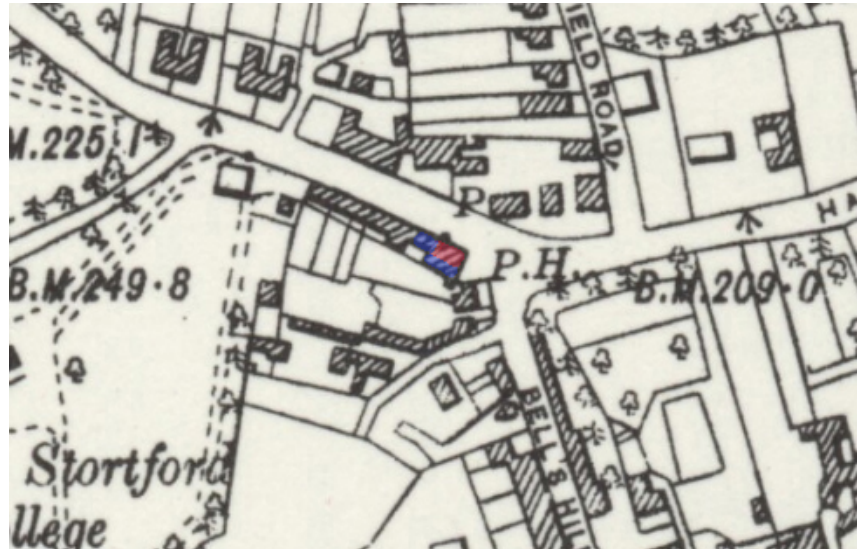


Photograph 2 Bricklayers Arms around the time of World War 1 (note the soldiers to the left of frame). Original windows visible. Pub still owned by Benskin's Brewery. Note large double doors leading into extension B (to left of pub). Taken from <http://www.stortfordhistory.co.uk/guide5/bells-hill/>.

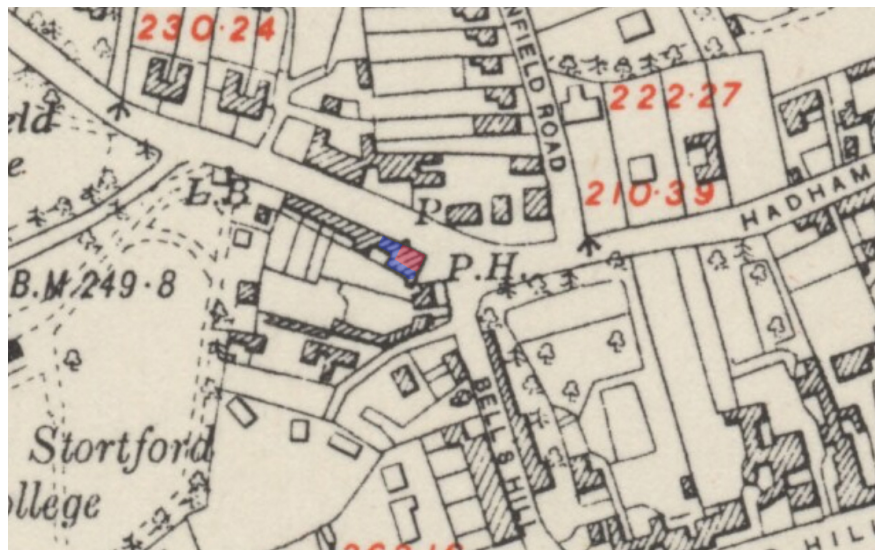
Through the subsequent six decades the cartographic evidence shows no change to the layout of the pub (Maps 3-5). The adjacent buildings of 63 and 65 Hadham Road were demolished in 1964 (Bishops Stortford UDC 1964, 33), leaving the pub once again free-standing. Shortly afterwards, in 1966, the interior of the building was substantially modernised (<http://www.stortfordhistory.co.uk>). The extension to the west of the pub, containing the toilet block, was probably added at this time, and the pub has had the same ground-plan ever since (Fig 2).



Map 3 1916 OS map 1:2500. Bricklayers Arms highlighted in red, extensions in blue.



Map 4 1938 6-inch OS map. Bricklayers Arms highlighted in red, extensions in blue.



Map 5 1946 6-inch OS map. Bricklayers Arms highlighted in red, extensions in blue.

Photos of the pub taken in the 1970s (Photographs 3 and 4) show its owner as Ind Coops, who purchased Benskin's Brewery in 1957 (<http://www.hertsmemories.org.uk>). The photos show the current window-frames (although the glass has since been replaced) and an earlier pub sign.

In 1997 (planning application 3/97/0955/FP) extension B was extended and converted into a pool room (previously it had been a bottle store).



Photograph 3 Bricklayers Arms in 1971. Pub sign visible for first time (with different logo than today). Also visible are the horned sash-windows on the pub and extension A. Photograph taken facing south-east. From www.geograph.org.uk.



Photograph 4 Bricklayers Arms in 1973. Inserted windows in place of original double doorway on the pub, and on extension B, both visible. Pub owned by Ind Coope. From www.geograph.org.uk.

6 Building recording descriptive record (Figs 2 - 7)

The Bricklayers Arms is located on Hadham Road, at its junction with Bells Hill (Fig 1).

This record describes the pub and its three extensions. The pub is a two-storey structure. On the north- and south-east elevations the first-floor is set back, and the ground-floor projects outwards (Figs 6-7 and Photograph 5).



Photograph 5 Exterior of Bricklayers Arms showing north- and south-east elevations. Photograph taken facing west.

Extension A is two-storeys and projects from the north-west of the pub. Extension B is single-storey and projects from the south-west elevation of the pub. Lastly, extension C is partially two-storey and infills between the north-west elevation of the pub and the south-west elevation of extension A (Fig 2).

The pub is aligned north-east/south-west. Collectively with its extensions it measures approximately 17.5m x 15.2m in size and covers around 200 square metres.

Exterior

All the windows detailed below are wooden-framed.

The pub has a hipped roof, covered in interlocking concrete tiles. Extension A has a gabled roof. Extension B has a two-pitch roof projecting from the south-west elevation of the pub. Both extensions A and B are roofed in slate. Extension C has a flat, felt covered, roof.

The pub was constructed in the Victorian period (sometime between 1839 and 1867 – see historical background above) and is made of brick. The brickwork is obscured around almost the entire structure, either by render or the extensions, with only a small segment visible on the exterior of the first-floor on the pub's north-west elevation. The type of bond and brick measurements were unfortunately not able to be ascertained.

The extensions are also constructed in brick, but like the pub itself their brickwork is obscured. The one exception is the modern extension C, which is constructed in spacer bond with brick dimensions 225mm x 100mm x 65mm.

The pub has two chimneys projecting from either end of its ridge-line (Photograph 5), both of which are original. Both extension A and extension B also have chimneys (Photograph 6 and Figs 6-7).



Photograph 6 Exterior of Bricklayers Arms showing extension B in foreground. Photograph taken facing north-east.

The current main public entrance into the building is through a modern half-glazed door on the south-east elevation (Photograph 7), but originally there was a double door on the corner of the pub, between the north- and south-east elevations, that has since been blocked by a large fixed window (see historical background above). The rear of the pub is accessed through a modern hammered-glass partially-glazed door on the north-west elevation of extension A (Fig 7). There is also a set of modern french windows on the north-west elevation of extension B, leading out onto the decking at the rear of the pub.



Photograph 7 South-east elevation of Bricklayers Arms. Photograph taken facing north-west.

The current pub sign (Photograph 8) post-dates 1973 (see historical background above).



Photograph 8 Detail of pub sign. Photograph taken facing north-west.

The windows on the ground-floor of the pub are a mix of two-light horned sash and single-light fixed windows. They are mostly arranged with a sash-window in-between two fixed-windows (Photograph 9), although on the north-east elevation there are two, larger, adjacent fixed-windows (Fig 6). Above two of the fixed windows on the south-east elevation are ornate metal ventilation grills (Photograph 10).



Photograph 9 Detail of fixed and sash-windows on south-east elevation. Photograph taken facing north-west.

The first-floor of the pub has wider horned sash-windows. All the pub's windows are replacements, as photographs of the pub from the early 20th century show (Photographs 1 and 2). Between adjacent windows on the ground-floor are ornate metal posts, decorated on their apex and base with floral motifs (Photograph 11). The windows on the north-east elevation of extension A are large four-light sash-windows, and are probably original (Fig 6).



Photograph 10 Detail of vents above fixed windows on south-east elevation. Photograph taken facing north-west.

The windows on the south-east elevation of extension B are large single-light fixed windows, in the location of the previous double-doors leading into this extension (see historical background above).

On extension C all the modern windows are fixed, awning or both.



Photograph 11 Detail of decoration on apex of metal post between windows on the north-east elevation of pub. Photograph taken facing south-west.

Interior

The interior of the pub has been heavily altered since its construction. Almost no features remain that are original to the building.

Extension A has a cellar beneath it, accessed both from a stairway within the pub and by a chute from the exterior of the building. The chute is brick- and concrete-lined, with two wooden and iron rails in the centre, designed to guide beer kegs and barrels into the cellar (Photograph 12). The door at the top of the stairway has four-panels, and is probably original (Photograph 13).



Photograph 12 Interior of cellar, showing hatch onto pavement and chute into cellar. Photograph taken facing north-west.



Photograph 13 Entrance into cellar from ground-floor of pub, with four-panel door visible to right. Photograph taken facing north-west.

The walls of the cellar are constructed of brickwork laid in English-bond with brick dimensions of 225mm x 110mm x 65mm. Within the cellar are several modern shelving units. On the south-east wall is a brick archway, supporting the chimney and fireplaces on the ground- and first-floors (Photograph 14).



Photograph 14 Interior of cellar, showing brick arch supporting chimney-stack on upper floors. Photograph taken facing east.

The ground-floor of the pub and extensions B and C are the public spaces of the Bricklayers Arms. Extension C contains the modern W.C.s and has modern or half-glazed doors.

The interior walls of the ground-floor of the pub and extension B are rendered over and have a wooden-panelled dado, with an associated dado-rail (Photograph 15). The public entrance into the pub leads into a small foyer, and from there into two separate bars: a smaller one to the south, and a larger one to the north (Fig 4).



Photograph 15 Interior of extension B, showing dado-rail and blocked fireplace. Photograph taken facing north-west.

The interior doors on the ground-floor of the pub vary, although none are original. Some are vertically-planked doors (Photograph 16), some are modern doors, and some are four-panel doors, with the upper two panels glazed with frosted glass

(matching the frosted glass on the windows) (Photograph 17). The floor in the northern bar is carpeted, but in the southern bar and the pool room the floor is bare floorboards.



Photograph 16 Vertical-planked door leading into northern bar from foyer. Photograph taken facing north-east.



Photograph 17 Four-panel door leading to the southern bar from the foyer (the decal labelling this as the "Public Bar" is a modern addition, as this bar would almost certainly have been the lounge bar). Photograph taken facing south-west.



Photograph 18 Detail of bar in northern bar of pub. Photograph taken facing west.



Photograph 19 Metal post in northern bar, supporting the first-floor. Note ornate decoration at apex. Photograph taken facing north-east.

The physical bar itself is panelled to match the dado (Photograph 18) and has a polished wood surface. While the current bar is a later replacement, it seems likely it is in the location of the original, given its central position in the pub (Fig 4).

In the eastern corner of the northern bar is a substantial metal post, in front of the large single-light fixed window on this elevation (see above). Like the smaller metal posts on the exterior, this one is decorated, in this case with a floral motif on the apex (Photograph 19). It serves to support the first-floor.

The only private area of the ground-floor is extension A, which contains a blocked fireplace and the modern kitchen (Photograph 20).



Photograph 20 Interior ground-floor of extension A, showing the blocked fireplace, door into corridor and stairway to first-floor. Photograph taken facing south.



Photograph 21 Original four-panel door leading into northern bedroom on first-floor of pub. Photograph taken facing north-east.

The first-floor of the Bricklayers Arms is entirely private, and until recently was the living quarters of the landlord. The first-floor of the pub has three bedrooms and a living-room, extension C has two W.Cs (Fig 5). The entirety of the first-floor of the building is wallpapered or rendered over, and has modern floor coverings (either carpets or tiles). Also present within the bedrooms were modern cupboards. As a result, no original features or fittings remain on the first-floor, with the exception of the four-panel door leading into the northern bedroom (Photograph 21). The other doors on the first-floor are all later modern insertions.

Originally the first-floor would have had four fireplaces (two from each chimney stack), but these have all been blocked up (Fig 5 and Photograph 22). One of these pairs of blocked fireplaces corresponds with the ones below (in the northern bar), but the other has no corresponding fireplace below it in the southern bar.



Photograph 22 Blocked fireplace in living room in first-floor of pub (replaced with electric heater). Photograph taken facing north.

The loft of extension A is accessible via a crawl space from the northern bedroom of the pub (Photograph 23). There is lath and plaster nailed to the rafters, which may be original (Photograph 24). Also visible in the loft is the chimney-stack for the fireplace below (Figs 3 - 4).



Photograph 23 Interior of northern bedroom in pub, showing original door (to left) and crawl-space into loft of extension A (to right).



Photograph 24 Loft above extension A. Lath and plaster visible behind panelling. Chimney-stack visible to right. Photograph taken facing north-west.

The roof of the pub was visible from the interior through a hatch in the landing. Inspection showed the roof was constructed of a mix of rudimentary hand-sawn and machine-cut timbers. The original rafters are hand-sawn (with dimensions 170mm x 100mm), but most of them are attached to a later machine-cut rafter (Photograph 25), which provides additional support. All the rafters rise to a ridge-board. As well as the additional rafters, there are several other timbers that are clearly later additions, supporting the roof in multiple locations.



Photograph 25 Detail of purlin on north-west pitch of roof with two adjacent nailed scarf joints. Also at top of the frame visible are rafters with modern supporting timbers. Photograph taken facing south-east.

There are a series of three rudimentary hand-sawn collars, between the chimney-stacks, that are nailed to the rafters (Photograph 26). There is one purlin on the north-west and south-east roof pitches, both of which are machine-cut. Both of the purlins also have two rudimentary scarf joints 500mm apart in the centre of the building: they are edge-halved scarfs with square abutments and secured with three nails (Photograph 25).



Photograph 26 Northern chimney-stack in roof. Also visible is rudimentary hand-sawn collar and clasped purlins. Photograph taken facing east.

7 Discussion

The public house is an institution recognizable to most people, whether they are regular patrons or not, but as a concept it did not develop until the 19th century. Public houses evolved from earlier buildings that provided food, drink and shelter, such as the alehouse, tavern and inn. In earlier centuries each of these buildings had a specific function and clientele, governed by licenses. The alehouse sold ale and beer to predominantly labourers and workmen whilst the better off would drink wine at a tavern. Inns were almost exclusively associated with the wealthier upper-classes.

The Bricklayers Arms, as a public house constructed sometime in the mid 19th century, was built in a time of growing influence and membership of the temperance movement in Britain. The temperance movement was committed to restricting the consumption of alcohol and cleaning up the nation's drinking establishments.

As a result of the temperance movement, in the second half of the 19th century, licensing restrictions on the sale of alcohol were tightened and authorities began to aggressively restrict the licenses of public houses that were deemed disreputable. This culminated in the 1902 Licensing Act that empowered magistrates to approve alterations to public houses, and insist on alterations to premises they thought unsuitable.

Alterations to public houses often included subdivision of the interior into separate rooms, such as public bars, lounge bars and private bars, each of which were locations where different behaviour and drinking practices were expected. This hearkened back to the class divisions seen in alehouses, taverns and inns in previous centuries.

The public bar, usually a large room at the front of the pub, was for the working man where 'perpendicular' drinking would take place (Brandwood 2004). This was characterized by the long bar counter and (often) a lack of seating. Separated from this by walls or screens were lounge or private bars, with seats, a nicer décor, and occasionally, higher prices (Brandwood 2004).

Licensing restrictions on the sale of alcohol, the subdivision of public houses into separate rooms, and the restrictions placed upon opening times, were all intended to discourage excessive drinking. It was also hoped they would encourage a higher class of patron to frequent public houses, a type of customer who (it was hoped) would drink only in moderation.

This was the political and cultural atmosphere, then, when the Bricklayers Arms was constructed in the mid 19th century. Although undoubtedly constructed primarily to provide a place of refreshment for the workers of the adjacent brickworks (see pg 2), in many ways it was typical of the new type of respectable public house required by the authorities. The large bar in the north room of the pub would have originally been the public bar, and the smaller southern bar would have been the lounge bar, providing a more intimate, civilised, drinking area (Fig 4).

Although modern redevelopment of the interior has removed any trace, it is likely that originally the Bricklayers Arms would have contained more in the way of ornate decoration. This was typical of public houses of the Victorian era, and is epitomised in its excess by the (in)famous 'gin palaces' found in large cities and towns during this period (Gibbons 2001, 41). No ornate decoration survives today, with the exceptions of the metal posts on the window-frames and the larger example supporting the first-floor on the interior of the building (pgs 9 and 14).

With the increasing growth of the temperance movement and the ever-watchful eye of the local licensing authorities in the late 19th and early 20th centuries, the owners of the Bricklayers Arms must have been extremely careful not to permit excessive drunkenness or fail in enforcing their opening hours. Any such lapse could have potentially caused the removal of the premises licence.

The extensions (A and B) added by Hawkes & Co. when it purchased the pub in the late 19th century show that the premises were still very much a going concern at that time. The apparent change in size of the pub between the 1st edition and 2nd edition OS map (see pg 2) might indicate that the projecting ground-floor (to the north- and south-east) with its large windows and impressive facade was added to the building during this time-frame. If so it was probably added at the same time as the extensions and would have necessitated a large-scale alteration of the ground-floor. The original stairway up to the first-floor (prior to the construction of extension A) would have been inside the pub itself, but no evidence survives that would indicate its location.

Likewise the extension for the W.Cs (C) and alterations to the interior in the 1960s shows that the pub was still doing a good enough trade to warrant significant expenditure on renovation. Amongst these interior alterations was the probable removal of the fireplace in the lounge bar, which would have projected from the floor above (as it does in the public bar, see Figs 3 - 4). This would have been removed to provide more space for patrons. The divided and segregated nature of the pub's rooms, a product of the 19th century, was no longer a desirable trait in the 20th (Brandwood 2004).

There is a suggestion in the Heritage Statement (Stanley Bragg 2017) that the pub may have originally been a house. If the ground-floor projections are a later addition (see above) then the original footprint and appearance of the building could easily have been similar to the other houses on the street. The only issue with this suggestion is that we know that the building is recorded as a pub in 1867, and that it was built sometime after 1839. This provides a relatively short length of time for the building to be in use as a house before it is converted into a pub, which seems somewhat unusual (although not impossible).

The Bricklayers Arms is a classic example of a 19th-century public house. Over the past 150 years it has weathered the closing of its eponymous brickworks and the temperance movement, and has been the subject of numerous extensions and alterations. Regardless of its origins, it was purpose-built to serve the growing local community and workforce during the rapid urban expansion of Victorian Britain.

8 Acknowledgements

Colchester Archaeological Trust would like to thank St James Contracts Ltd for commissioning and funding the historic building recording.

The recording was carried out by Mark Baister.

Figures are by Mark Baister, adapted from architects plans by Survey Solutions.

The project was monitored by Simon Wood for East Hertfordshire Council.

9 References

Note: all CAT reports, except for DBAs, are available online in .pdf format at

<http://cat.essex.ac.uk>

Bishops Stortford Urban District Council	1964	<i>Annual Report of the Medical Officer Of Health and The Chief Public Health Inspector</i>
Brandwood, G. & Davidson, A.	2004	<i>Licensed to Sell: The History and Heritage of the Public House</i>
Brunskill, R.W.	1990	<i>Brick Building In Britain (1st ed)</i>
Brunskill, R.W.	1994	<i>Timber Building In Britain (2nd ed)</i>
CAT	2018	<i>Written Scheme of Investigation for historic building recording at Bricklayers Arms, 61 Hadham Road, Bishops Stortford, Hertfordshire CM23 2QY</i>
Cifa	2014a	<i>Standard and guidance for the collection, documentation, conservation and research of archaeological materials</i>
Cifa	2014b	<i>Standard and guidance for archaeological investigation and recording of standing buildings or structures</i>
DCLG	2012	<i>National planning policy framework</i>
EAA 14	2003	<i>Standards for field archaeology in the East of England</i> East Anglian Archaeological occasional papers 14 by Gurney, D.
EAA 24	2011	<i>Research and Archaeology Revisited: A Revised Framework for the East of England</i> , East Anglian Archaeological occasional papers 24 by Medlycott, M
Gibbons, E.	2001	<i>All Beer and Skittles?: A Short History of Inns and Taverns</i>
Historic England	2015	<i>MoRPHE: Management of Research Projects in the Historic Environment</i>
Historic England	2016	<i>Understanding Historic Buildings. A guide to good recording practice</i>
Stanley Bragg Architects	2017	<i>Heritage Statement: 61 Hadham Road, Bishops Stortford</i>

Websites visited include:

http://www.stortfordhistory.co.uk
http://www.hertsmemories.org.uk
http://www.geograph.org.uk
http://pubshistory.com

10 Abbreviations and glossary

CAT	Colchester Archaeological Trust
HCC	Hertfordshire County Council
CIfA	Chartered Institute for Archaeologists
collar	a horizontal timber in a roof spanning between a pair of inclined timbers (such as rafters)
dado	the lower part of an interior wall, when decorated differently from the upper part
HHER	Hertfordshire Historic Environment Record, held by the HCC
English-bond	a brickwork bond created from alternate courses of headers and stretchers
HE	Historic Environment
modern	period from the 19th century onwards to the present
NGR	National Grid Reference
OASIS	O nline A cces S to the I ndex of A rchaeological I nvestigations, http://oasis.ac.uk/pages/wiki/Main
rafter	an inclined timber following the slope of the roof
ridge-board	a plank-like timber running below the apex of the roof and receiving the ends of the rafters
stretcher-bond	a brickwork bond where each course consists of only stretchers – indicating a cavity wall
Victorian	the reign of Queen Victoria, from 1837 to 1901

11 Archive deposition

The paper and digital archive is currently held by the Colchester Archaeological Trust at Roman Circus House, Roman Circus Walk, Colchester, Essex CO2 7GZ, but will be permanently deposited with Hertfordshire Archives and Local Studies.

12 Contents of archive

Paper and digital record

One A4 document wallet containing:

The report (CAT Report 1263)

Original site record (plans, elevations and notes)

Site digital and black and white photos and log, attendance register, risk assessment

© Colchester Archaeological Trust 2018

Distribution list

David McCartney, St James Contracts Ltd
Simon Wood, HCCHEA
HHER



Colchester Archaeological Trust

Roman Circus House
Circular Road North,
Colchester,
Essex CO2 7GZ

tel.: 01206 501785

email: mb@catuk.org

checked by: Philip Crummy
date: 02/05/2018

Appendix 1:
Full digital photographic record
(images on accompanying CD)

Bishops Stortford, Bricklayers Arms HBR 0001.JPG	Exterior shot showing north-west elevation of pub and extensions A and C. Photograph taken facing south-east.
Bishops Stortford, Bricklayers Arms HBR 0002.JPG	Exterior shot showing north-west elevation extension A. Photograph taken facing south-east.
Bishops Stortford, Bricklayers Arms HBR 0003.JPG	Exterior shot showing detail of north-west elevation of extensions A and C. Photograph taken facing south-east.
Bishops Stortford, Bricklayers Arms HBR 0004.JPG	Exterior shot showing first-floor of extension C. Photograph taken facing south-east.
Bishops Stortford, Bricklayers Arms HBR 0005.JPG	Exterior shot showing door and windows on north-west elevation of extension C. Photograph taken facing south.
Bishops Stortford, Bricklayers Arms HBR 0006.JPG	Exterior shot showing north-east elevation of pub and extension A. Photograph taken facing south.
Bishops Stortford, Bricklayers Arms HBR 0007.JPG	Exterior shot showing north-east elevation of extension A. Photograph taken facing south.
Bishops Stortford, Bricklayers Arms HBR 0008.JPG	Exterior shot showing north-east and south-west elevations of pub and extensions A and C. Photograph taken facing south-west.
Bishops Stortford, Bricklayers Arms HBR 0009.JPG	Exterior shot showing north-east and south-west elevations of pub. Photograph taken facing west.
Bishops Stortford, Bricklayers Arms HBR 0010.JPG	Exterior shot showing detail of fixed and narrow sash windows on north-east elevation of pub. Photograph taken facing south-west.
Bishops Stortford, Bricklayers Arms HBR 0011.JPG	Exterior shot showing detail of fixed windows on north-east elevation of pub. Photograph taken facing south-west.
Bishops Stortford, Bricklayers Arms HBR 0012.JPG	Exterior shot showing detail of small glass panels about fixed windows on north-east elevation of pub. Photograph taken facing west.
Bishops Stortford, Bricklayers Arms HBR 0013.JPG	Exterior shot showing detail of bottom of metal post between windows on the north-east elevation of pub. Photograph taken facing south-west.
Bishops Stortford, Bricklayers Arms HBR 0014.JPG	Exterior shot showing detail of top of metal post between windows on the north-east elevation of pub. Photograph taken facing south-west.
Bishops Stortford, Bricklayers Arms HBR 0015.JPG	Exterior shot of the south-east elevation of pub and extension B. Photograph taken facing north-west.
Bishops Stortford, Bricklayers Arms HBR 0016.JPG	Exterior shot showing detail of pub sign. Photograph taken facing north-west.
Bishops Stortford, Bricklayers Arms HBR 0017.JPG	Exterior shot showing detail of sash and fixed windows on the south-east elevation of pub. Photograph taken facing north-west.
Bishops Stortford, Bricklayers Arms HBR 0018.JPG	Exterior shot showing detail of half-glazed panelled door on south-east elevation of pub. Photograph taken facing north-west.
Bishops Stortford, Bricklayers Arms HBR 0019.JPG	Exterior shot showing detail of sash and fixed windows on the south-east elevation

	of pub, including vents above. Photograph taken facing north-west.
Bishops Stortford, Bricklayers Arms HBR 0020.JPG	Exterior shot showing detail of vents above fixed windows on the south-east elevation of pub. Photograph taken facing north.
Bishops Stortford, Bricklayers Arms HBR 0021.JPG	Exterior shot showing detail of vents above fixed windows on the south-east elevation of pub. Photograph taken facing north-west.
Bishops Stortford, Bricklayers Arms HBR 0022.JPG	Exterior shot showing detail of vents above fixed windows on the south-east elevation of pub. Photograph taken facing north-west.
Bishops Stortford, Bricklayers Arms HBR 0023.JPG	Exterior shot showing detail of lettering on door on the south-east elevation of pub. Photograph taken facing north-west.
Bishops Stortford, Bricklayers Arms HBR 0024.JPG	Exterior shot of south-east elevation of extension B. Photograph taken facing north-west.
Bishops Stortford, Bricklayers Arms HBR 0025.JPG	Exterior shot showing detail of sign on second storey on the north-west elevation of pub. Photograph taken facing south-east.
Bishops Stortford, Bricklayers Arms HBR 0026.JPG	Exterior shot of north-west elevation of extension A. Photograph taken facing south.
Bishops Stortford, Bricklayers Arms HBR 0027.JPG	Exterior shot showing detail of horned sash window on north-east elevation of extension A. Photograph taken facing south-west.
Bishops Stortford, Bricklayers Arms HBR 0028.JPG	Exterior shot showing detail of inserted fixed window on east elevation of the pub. Photograph taken facing west.
Bishops Stortford, Bricklayers Arms HBR 0029.JPG	Exterior shot showing detail of exposed brickwork beneath moulding on east elevation of the pub. Photograph taken facing west.
Bishops Stortford, Bricklayers Arms HBR 0030.JPG	Exterior shot showing detail of step into door on south-east elevation of the pub. Photograph taken facing north.
Bishops Stortford, Bricklayers Arms HBR 0031.JPG	Exterior shot showing joining wall between extension B and Carlton House. Photograph taken facing south-west.
Bishops Stortford, Bricklayers Arms HBR 0032.JPG	Exterior shot of south-west elevation of pub and extensions A and B. Photograph taken facing north-east.
Bishops Stortford, Bricklayers Arms HBR 0033.JPG	Exterior shot of south-west elevation of pub and extensions A and B, showing sash window on pub. Photograph taken facing north-east.
Bishops Stortford, Bricklayers Arms HBR 0034.JPG	Exterior shot showing detail of lamp by door on south-east elevation of pub. Photograph taken facing west.
Bishops Stortford, Bricklayers Arms HBR 0035.JPG	Exterior shot showing detail of handle on door on south-east elevation of pub. Photograph taken facing north-west.
Bishops Stortford, Bricklayers Arms HBR 0036.JPG	Exterior shot of north-west elevation of pub, showing narrow sash window. Photograph taken facing south-east.
Bishops Stortford, Bricklayers Arms HBR 0037.JPG	Exterior shot showing detail of frosted section of glass on window on east elevation of pub. Photograph taken facing west.
Bishops Stortford, Bricklayers Arms HBR 0038.JPG	Exterior shot showing detail of frosted section of glass on window on south-east elevation of pub. Photograph taken facing north-west.

Bishops Stortford, Bricklayers Arms HBR 0039.JPG	Exterior shot of pub and extensions A and C. Photograph taken facing south.
Bishops Stortford, Bricklayers Arms HBR 0041.JPG	Exterior shot showing north-west elevation of extensions B and C Photograph taken facing south-east.
Bishops Stortford, Bricklayers Arms HBR 0042.JPG	Exterior shot showing north-west elevation of extensions A, B and C Photograph taken facing east.
Bishops Stortford, Bricklayers Arms HBR 0043.JPG	Exterior shot showing north-west and south-west elevation of extension B. Photograph taken facing east.
Bishops Stortford, Bricklayers Arms HBR 0044.JPG	Exterior shot showing south-west elevation of extension C, with half-glazed door. Photograph taken facing north-east.
Bishops Stortford, Bricklayers Arms HBR 0045.JPG	Exterior shot showing north-west elevation of extension B. Photograph taken facing south-east.
Bishops Stortford, Bricklayers Arms HBR 0046.JPG	Interior shot of extension B. Photograph taken facing east.
Bishops Stortford, Bricklayers Arms HBR 0047.JPG	Interior shot of extension B. Photograph taken facing south.
Bishops Stortford, Bricklayers Arms HBR 0048.JPG	Interior shot of extension B. Photograph taken facing west.
Bishops Stortford, Bricklayers Arms HBR 0049.JPG	Interior shot of extension B. Photograph taken facing north-west.
Bishops Stortford, Bricklayers Arms HBR 0050.JPG	Interior shot of extension B, showing detail of blocked in(?) fireplace. Photograph taken facing north-east.
Bishops Stortford, Bricklayers Arms HBR 0051.JPG	Interior shot of extension B. Photograph taken facing north.
Bishops Stortford, Bricklayers Arms HBR 0052.JPG	Interior shot of extension B, showing french doors leading onto decking. Photograph taken facing north-west.
Bishops Stortford, Bricklayers Arms HBR 0053.JPG	Interior shot of public bar. Photograph taken facing east.
Bishops Stortford, Bricklayers Arms HBR 0054.JPG	Interior shot of public bar. Photograph taken facing south-east.
Bishops Stortford, Bricklayers Arms HBR 0055.JPG	Interior shot of public bar. Photograph taken facing east.
Bishops Stortford, Bricklayers Arms HBR 0056.JPG	Interior shot of public bar, showing detail of windows on south-east elevation. Photograph taken facing south-east.
Bishops Stortford, Bricklayers Arms HBR 0057.JPG	Interior shot of public bar. Photograph taken facing west.
Bishops Stortford, Bricklayers Arms HBR 0058.JPG	Interior shot of public bar. Photograph taken facing north-west.
Bishops Stortford, Bricklayers Arms HBR 0059.JPG	Interior shot of public bar. Photograph taken facing north-west.
Bishops Stortford, Bricklayers Arms HBR 0060.JPG	Interior shot of public bar, showing detail of fireplace and modern surround. Photograph taken facing south-west.
Bishops Stortford, Bricklayers Arms HBR 0061.JPG	Interior shot of public bar, showing detail of bar. Photograph taken facing north-east.
Bishops Stortford, Bricklayers Arms HBR 0062.JPG	Interior shot of public bar. Photograph taken facing east.
Bishops Stortford, Bricklayers Arms HBR 0063.JPG	Interior shot of public bar, showing door leading into foyer. Photograph taken facing north-east.
Bishops Stortford, Bricklayers Arms HBR 0064.JPG	Interior shot of public bar, showing detail of floorboards. Photograph taken facing south-east.
Bishops Stortford, Bricklayers Arms HBR 0065.JPG	Interior shot of public bar, showing exposed woodwork adjacent to fireplace. Photograph taken facing west.
Bishops Stortford, Bricklayers Arms HBR 0066.JPG	Interior shot from public bar showing back bar area. Photograph taken facing north.

Bishops Stortford, Bricklayers Arms HBR 0067.JPG	Interior shot from public bar showing back bar area. Photograph taken facing east.
Bishops Stortford, Bricklayers Arms HBR 0068.JPG	Interior shot from public bar showing back bar. Photograph taken facing north-east.
Bishops Stortford, Bricklayers Arms HBR 0069.JPG	Interior shot from public bar entrance into corridor. Photograph taken facing north-east.
Bishops Stortford, Bricklayers Arms HBR 0070.JPG	Interior shot in foyer showing doorway into the lounge bar ("lounge" has been removed from the decal). Photograph taken facing north-east.
Bishops Stortford, Bricklayers Arms HBR 0071.JPG	Interior shot in foyer modern window into bar area. Photograph taken facing west.
Bishops Stortford, Bricklayers Arms HBR 0072.JPG	Interior shot in foyer showing "The British Institute of Innkeeping" plaque. Photograph taken facing west.
Bishops Stortford, Bricklayers Arms HBR 0073.JPG	Interior shot in foyer showing main doorway out of building (with frosted glass and logo). Photograph taken facing south-east.
Bishops Stortford, Bricklayers Arms HBR 0074.JPG	Interior shot in foyer showing awning window above main doorway out of building. Photograph taken facing south-east.
Bishops Stortford, Bricklayers Arms HBR 0075.JPG	Interior shot in foyer showing doorway into public bar (with frosted glass). Photograph taken facing south-west.
Bishops Stortford, Bricklayers Arms HBR 0076.JPG	Interior shot of corridor in south of extension A, leading to rear door. Photograph taken facing north-west.
Bishops Stortford, Bricklayers Arms HBR 0077.JPG	Interior shot of corridor in south of extension A, leading to bar area. Photograph taken facing south-east.
Bishops Stortford, Bricklayers Arms HBR 0078.JPG	Interior shot of corridor in south of extension A, showing door into womens W.C in extension C. Photograph taken facing south.
Bishops Stortford, Bricklayers Arms HBR 0079.JPG	Interior shot of door leading into corridor leading to mens W.C. in extension C. Photograph taken facing north-west.
Bishops Stortford, Bricklayers Arms HBR 0080.JPG	Interior shot of corridor in south of extension A, showing door into kitchen. Photograph taken facing north.
Bishops Stortford, Bricklayers Arms HBR 0081.JPG	Interior shot of back bar area. Photograph taken facing south-east.
Bishops Stortford, Bricklayers Arms HBR 0082.JPG	Interior shot from back bar area, showing public bar. Photograph taken facing west.
Bishops Stortford, Bricklayers Arms HBR 0083.JPG	Interior shot of back bar area. Photograph taken facing north-west.
Bishops Stortford, Bricklayers Arms HBR 0084.JPG	Interior shot of back bar area. Photograph taken facing north-east.
Bishops Stortford, Bricklayers Arms HBR 0085.JPG	Interior shot of back bar area. Photograph taken facing south-west.
Bishops Stortford, Bricklayers Arms HBR 0086.JPG	Interior shot of lounge bar, showing bricked up fireplace. Photograph taken facing south.
Bishops Stortford, Bricklayers Arms HBR 0087.JPG	Interior shot of back bar area. Photograph taken facing south-west.
Bishops Stortford, Bricklayers Arms HBR 0088.JPG	Interior shot of lounge bar, showing door leading corridor of extension A. Photograph taken facing south-west.
Bishops Stortford, Bricklayers Arms HBR 0089.JPG	Interior shot of lounge bar, showing fireplace. Photograph taken facing west.
Bishops Stortford, Bricklayers Arms HBR 0090.JPG	Interior shot of lounge bar. Photograph taken facing north.
Bishops Stortford, Bricklayers Arms HBR 0091.JPG	Interior shot of lounge bar, showing bar area. Photograph taken facing west.

Bishops Stortford, Bricklayers Arms HBR 0092.JPG	Interior shot of lounge bar, showing bar area. Photograph taken facing south-west.
Bishops Stortford, Bricklayers Arms HBR 0093.JPG	Interior shot of lounge bar, showing bar area and inserted timber. Photograph taken facing south-west.
Bishops Stortford, Bricklayers Arms HBR 0094.JPG	Interior shot of lounge bar, showing fireplace. Photograph taken facing north-west.
Bishops Stortford, Bricklayers Arms HBR 0095.JPG	Interior shot of lounge bar, showing detail of repair/extension to fireplace brickwork. Photograph taken facing north-west.
Bishops Stortford, Bricklayers Arms HBR 0096.JPG	Interior shot of lounge bar, showing detail of grate in fireplace. Photograph taken facing north-west.
Bishops Stortford, Bricklayers Arms HBR 0097.JPG	Interior shot of lounge bar, showing blocked fireplace. Photograph taken facing south-east.
Bishops Stortford, Bricklayers Arms HBR 0098.JPG	Interior shot of lounge bar, showing detail of repair/extension to fireplace brickwork. Photograph taken facing east.
Bishops Stortford, Bricklayers Arms HBR 0099.JPG	Interior shot of lounge bar, showing inserted beam. Photograph taken facing east.
Bishops Stortford, Bricklayers Arms HBR 0100.JPG	Interior shot of lounge bar, showing inserted beam. Photograph taken facing north-west.
Bishops Stortford, Bricklayers Arms HBR 0101.JPG	Interior shot of lounge bar, showing three windows with frosted glass and logo. Photograph taken facing south-east.
Bishops Stortford, Bricklayers Arms HBR 0102.JPG	Interior shot of lounge bar, showing recess above windows and light. Photograph taken facing north-east.
Bishops Stortford, Bricklayers Arms HBR 0103.JPG	Interior shot of lounge bar, showing window in location of original double-door with frosted glass and logo. Photograph taken facing north-east.
Bishops Stortford, Bricklayers Arms HBR 0104.JPG	Interior shot of lounge bar, showing metal post supporting first-floor. Photograph taken facing north-east.
Bishops Stortford, Bricklayers Arms HBR 0105.JPG	Interior shot of lounge bar, showing three windows with frosted glass and logo. Photograph taken facing north-east.
Bishops Stortford, Bricklayers Arms HBR 0106.JPG	Interior shot of lounge bar, showing recess above windows and light. Photograph taken facing north-west.
Bishops Stortford, Bricklayers Arms HBR 0107.JPG	Interior shot of lounge bar, showing three windows with frosted glass. Photograph taken facing north-east.
Bishops Stortford, Bricklayers Arms HBR 0108.JPG	Interior shot of lounge bar, showing recess above windows and light. Photograph taken facing north-west.
Bishops Stortford, Bricklayers Arms HBR 0109.JPG	Interior shot of lounge bar, showing narrow sash window with frosted glass. Photograph taken facing north-west.
Bishops Stortford, Bricklayers Arms HBR 0110.JPG	Interior shot of lounge bar, showing vertical-planked door leading into foyer. Photograph taken facing south-west.
Bishops Stortford, Bricklayers Arms HBR 0111.JPG	Interior shot of women's W.C. in extension C. Photograph taken facing west.
Bishops Stortford, Bricklayers Arms HBR 0112.JPG	Interior shot of women's W.C. in extension C. Photograph taken facing south-west.
Bishops Stortford, Bricklayers Arms HBR 0113.JPG	Shot through rear door into extension B/ C. Photograph taken facing south-east.
Bishops Stortford, Bricklayers Arms HBR 0114.JPG	Interior shot of door leading into corridor in extension A. Photograph taken facing south-east.

Bishops Stortford, Bricklayers Arms HBR 0115.JPG	Interior shot of corridor between W.Cs in extension C. Photograph taken facing south-west.
Bishops Stortford, Bricklayers Arms HBR 0116.JPG	Interior shot of entrance leading into men's W.C. in extension C. Photograph taken facing west.
Bishops Stortford, Bricklayers Arms HBR 0117.JPG	Interior shot of men's W.C. in extension C. Photograph taken facing south.
Bishops Stortford, Bricklayers Arms HBR 0118.JPG	Interior shot of men's W.C. in extension C. Photograph taken facing south-east.
Bishops Stortford, Bricklayers Arms HBR 0119.JPG	Interior shot of mens W.C. in extension C. Photograph taken facing south-west.
Bishops Stortford, Bricklayers Arms HBR 0120.JPG	Interior shot of kitchen in ground-floor of extension A. Photograph taken facing east.
Bishops Stortford, Bricklayers Arms HBR 0121.JPG	Interior shot of kitchen in ground-floor of extension A. Photograph taken facing south.
Bishops Stortford, Bricklayers Arms HBR 0122.JPG	Interior shot of kitchen in ground-floor of extension A. Photograph taken facing west.
Bishops Stortford, Bricklayers Arms HBR 0123.JPG	Interior shot of kitchen in ground-floor of extension A. Photograph taken facing north.
Bishops Stortford, Bricklayers Arms HBR 0124.JPG	Interior shot of kitchen in ground-floor of extension A, showing stairs leading up to first-floor. Photograph taken facing south-east.
Bishops Stortford, Bricklayers Arms HBR 0125.JPG	Interior shot of kitchen in ground-floor of extension A, showing blocked fireplace. Photograph taken facing south-east.
Bishops Stortford, Bricklayers Arms HBR 0126.JPG	Interior shot of private W.C. on first-floor of extension C. Photograph taken facing south-west.
Bishops Stortford, Bricklayers Arms HBR 0127.JPG	Interior shot of door leading out of private W.C. on first-floor of extension C. Photograph taken facing east.
Bishops Stortford, Bricklayers Arms HBR 0128.JPG	Interior shot of private W.C. on first-floor of extension C. Photograph taken facing north-west.
Bishops Stortford, Bricklayers Arms HBR 0129.JPG	Interior shot of door into bedroom on first-floor of pub. Photograph taken facing east.
Bishops Stortford, Bricklayers Arms HBR 0130.JPG	Interior shot of bedroom on first-floor of pub. Photograph taken facing north.
Bishops Stortford, Bricklayers Arms HBR 0131.JPG	Interior shot of bedroom on first-floor of pub. Photograph taken facing east.
Bishops Stortford, Bricklayers Arms HBR 0132.JPG	Interior shot of bedroom on first-floor of pub, showing blocked fireplace. Photograph taken facing south-east.
Bishops Stortford, Bricklayers Arms HBR 0133.JPG	Interior shot of bedroom on first-floor of pub, showing sash window. Photograph taken facing south-west.
Bishops Stortford, Bricklayers Arms HBR 0134.JPG	Interior shot of bedroom on first-floor of pub, showing detail of rope supporting sash window. Photograph taken facing south-east.
Bishops Stortford, Bricklayers Arms HBR 0135.JPG	Interior shot of airing cupboard on first-floor of extension C. Photograph taken facing north-west.
Bishops Stortford, Bricklayers Arms HBR 0136.JPG	Interior shot of airing cupboard on first-floor of extension C. Photograph taken facing west.
Bishops Stortford, Bricklayers Arms HBR 0137.JPG	Interior shot of window in W.C. on first-floor of extension C. Photograph taken facing north-west.
Bishops Stortford, Bricklayers Arms HBR 0138.JPG	Interior shot of corridor joining first-floor of extension C with the first-floor of the pub. Photograph taken facing north-west.

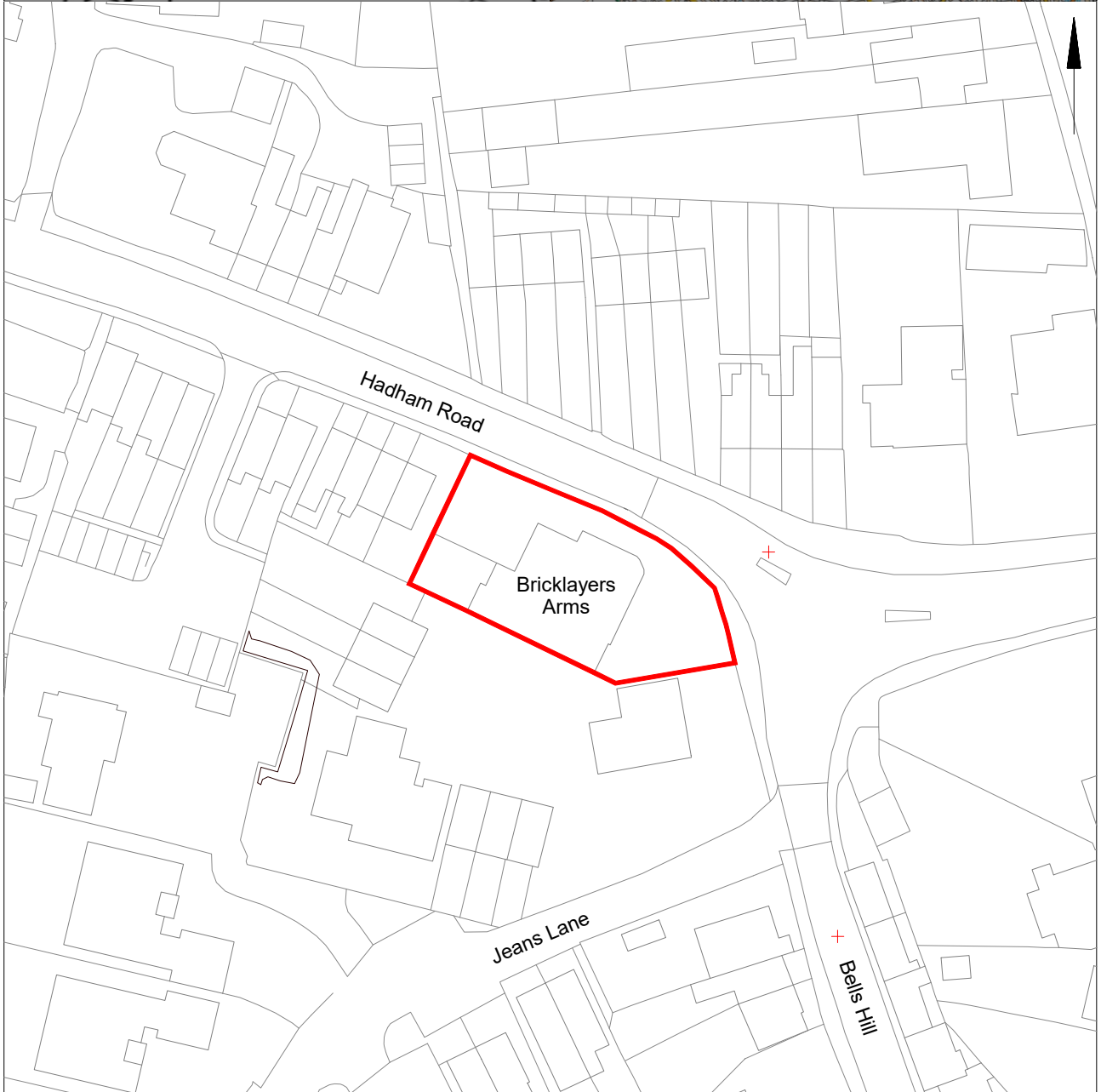
Bishops Stortford, Bricklayers Arms HBR 0139.JPG	Interior shot showing detail of bridging-beam above corridor joining first-floor of extension C with the first-floor of the pub. Photograph taken facing north-west.
Bishops Stortford, Bricklayers Arms HBR 0140.JPG	Interior shot of bedroom doorway showing thickness of original external wall of pub. Photograph taken facing south.
Bishops Stortford, Bricklayers Arms HBR 0141.JPG	Interior shot of original door leading into bedroom on first-floor of the pub. Photograph taken facing north-east.
Bishops Stortford, Bricklayers Arms HBR 0142.JPG	Interior shot of original door on first-floor of the pub. Photograph taken facing south.
Bishops Stortford, Bricklayers Arms HBR 0143.JPG	Interior shot of bedroom on first-floor of the pub. Photograph taken facing east.
Bishops Stortford, Bricklayers Arms HBR 0144.JPG	Interior shot of bedroom on first-floor of the pub. Photograph taken facing south.
Bishops Stortford, Bricklayers Arms HBR 0145.JPG	Interior shot of bedroom on first-floor of the pub, showing original door and crawl space into loft of extension A. Photograph taken facing west.
Bishops Stortford, Bricklayers Arms HBR 0146.JPG	Interior shot of loft of extension A. Photograph taken facing north-west.
Bishops Stortford, Bricklayers Arms HBR 0147.JPG	Interior shot of lath and plaster on rafters of loft in extension A. Photograph taken facing west.
Bishops Stortford, Bricklayers Arms HBR 0148.JPG	Interior shot in bedroom on first-floor of the pub, showing crawl space into loft of extension A. Photograph taken facing north-west.
Bishops Stortford, Bricklayers Arms HBR 0149.JPG	Interior shot of door leading into the living room on first-floor of the pub. Photograph taken facing east.
Bishops Stortford, Bricklayers Arms HBR 0150.JPG	Interior shot of living room on first-floor of the pub. Photograph taken facing east.
Bishops Stortford, Bricklayers Arms HBR 0151.JPG	Interior shot of living room on first-floor of the pub, showing blocked fireplace. Photograph taken facing north.
Bishops Stortford, Bricklayers Arms HBR 0152.JPG	Interior shot of living room on first-floor of the pub. Photograph taken facing west.
Bishops Stortford, Bricklayers Arms HBR 0153.JPG	Interior shot of blocked fireplace in living room on first-floor of the pub. Photograph taken facing west.
Bishops Stortford, Bricklayers Arms HBR 0154.JPG	Interior shot of living room on first-floor of the pub. Photograph taken facing south.
Bishops Stortford, Bricklayers Arms HBR 0155.JPG	Interior shot of sash window in living room on first-floor of the pub. Photograph taken facing north-east.
Bishops Stortford, Bricklayers Arms HBR 0156.JPG	Interior shot of sash window in living room on first-floor of the pub. Photograph taken facing south-east.
Bishops Stortford, Bricklayers Arms HBR 0157.JPG	Interior shot of door leading into bedroom from living room on first-floor of the pub. Photograph taken facing south-west.
Bishops Stortford, Bricklayers Arms HBR 0158.JPG	Interior shot of bedroom on first-floor of the pub. Photograph taken facing west.
Bishops Stortford, Bricklayers Arms HBR 0159.JPG	Interior shot of bedroom on first-floor of the pub, showing blocked fireplace. Photograph taken facing west.
Bishops Stortford, Bricklayers Arms HBR 0160.JPG	Interior shot of bedroom on first-floor of the pub. Photograph taken facing north-west.
Bishops Stortford, Bricklayers Arms HBR 0161.JPG	Interior shot of bedroom on first-floor of the pub. Photograph taken facing east.
Bishops Stortford, Bricklayers Arms HBR 0162.JPG	Interior shot of roof in attic, showing nailed scarf joint on the north-west purlin. Photograph taken facing south-east.

Bishops Stortford, Bricklayers Arms HBR 0163.JPG	Interior shot of roof in attic, showing collar and clasped purlin. Photograph taken facing south.
Bishops Stortford, Bricklayers Arms HBR 0164.JPG	Interior shot of roof in attic, showing collar and northern chimney-stack. Photograph taken facing north.
Bishops Stortford, Bricklayers Arms HBR 0165.JPG	Interior shot of roof in attic, showing collar and northern chimney-stack. Photograph taken facing north.
Bishops Stortford, Bricklayers Arms HBR 0166.JPG	Interior shot of roof in attic, showing individual modern timbers forming the south-west pitch of roof. Photograph taken facing south.
Bishops Stortford, Bricklayers Arms HBR 0167.JPG	Interior shot of roof in attic, showing rudimentary hand-sawn collar. Photograph taken facing south-east.
Bishops Stortford, Bricklayers Arms HBR 0168.JPG	Interior shot of roof in attic, showing original hand-sawn rafters supplemented by machine-cut ones. Photograph taken facing south-east.
Bishops Stortford, Bricklayers Arms HBR 0169.JPG	Interior shot of access into cellar. Photograph taken facing north-west.
Bishops Stortford, Bricklayers Arms HBR 0170.JPG	Interior shot of original door providing access into cellar. Photograph taken facing north.
Bishops Stortford, Bricklayers Arms HBR 0171.JPG	Interior shot of cellar, showing stairs. Photograph taken facing south-east.
Bishops Stortford, Bricklayers Arms HBR 0172.JPG	Interior shot of cellar, showing brick arch supporting fireplaces on ground- and first-floors. Photograph taken facing east.
Bishops Stortford, Bricklayers Arms HBR 0173.JPG	Interior shot of cellar. Photograph taken facing west.
Bishops Stortford, Bricklayers Arms HBR 0174.JPG	Interior shot of cellar, showing stairs. Photograph taken facing north-west.
Bishops Stortford, Bricklayers Arms HBR 0175.JPG	Interior shot of cellar. Photograph taken facing north.
Bishops Stortford, Bricklayers Arms HBR 0176.JPG	Interior shot of cellar, showing stairs and brickwork. Photograph taken facing south.
Bishops Stortford, Bricklayers Arms HBR 0177.JPG	Interior shot of cellar, showing stairs. Photograph taken facing south-east.
Bishops Stortford, Bricklayers Arms HBR 0178.JPG	Interior shot of cellar, showing stairs. Photograph taken facing south-east.
Bishops Stortford, Bricklayers Arms HBR 0179.JPG	Interior shot of cellar, showing chute from street. Photograph taken facing north-east.
Bishops Stortford, Bricklayers Arms HBR 0180.JPG	Interior shot of cellar, showing chute from street. Photograph taken facing north-east.

**Appendix 2:
Full black and white photographic record
(images in archive)**

Bishops Stortford, Bricklayers Arms B&W 01	Exterior shot showing north-east elevation of pub and extension A. Photograph taken facing south.
Bishops Stortford, Bricklayers Arms B&W 02	Exterior shot showing north-east elevation of pub and extension A. Photograph taken facing south.
Bishops Stortford, Bricklayers Arms B&W 03	Exterior shot showing north-west elevation of pub and extensions A and C. Photograph taken facing south-east.
Bishops Stortford, Bricklayers Arms B&W 04	Interior shot of plaque for "The British Institute of Innkeeping" in the pub's foyer. Photograph taken facing north-west.
Bishops Stortford, Bricklayers Arms B&W 05	Interior shot showing detail of french doors leading out of north-west elevation of extension B. Photograph taken facing north-west.
Bishops Stortford, Bricklayers Arms B&W 06	Interior shot of roof space of pub showing northern chimney-stack. Photograph taken facing east.
Bishops Stortford, Bricklayers Arms B&W 07	Interior shot showing blocked fireplace in south-west bedroom on first-floor of pub. Photograph taken facing east.
Bishops Stortford, Bricklayers Arms B&W 08	Interior shot of first-floor sash window on south-east elevation of pub. Photograph taken facing south-east.
Bishops Stortford, Bricklayers Arms B&W 09	Interior shot of first-floor of pub and extension C, showing thickness of pub's exterior wall and new entrance into south-west bedroom. Photograph taken facing south.
Bishops Stortford, Bricklayers Arms B&W 10	Interior shot of living room on first-floor of pub, showing blocked fireplace and sash window. Photograph taken facing north.
Bishops Stortford, Bricklayers Arms B&W 11	Interior shot showing lath and plaster on rafters in extension A. Photograph taken facing west.
Bishops Stortford, Bricklayers Arms B&W 12	Interior shot of original door leading into north bedroom on first-floor of pub. Photograph taken facing north-east.
Bishops Stortford, Bricklayers Arms B&W 13	Interior shot of ground-floor door into kitchen in extension A. Photograph taken facing south-east.
Bishops Stortford, Bricklayers Arms B&W 14	Interior shot showing door on ground-floor of extension A leading into extension C. Photograph taken facing north-east.
Bishops Stortford, Bricklayers Arms B&W 15	Interior shot showing interior of lounge bar of pub and extension B. Photograph taken facing south.
Bishops Stortford, Bricklayers Arms B&W 16	Interior shot showing entrance into cellar below extension A. Photograph taken facing north-west.
Bishops Stortford, Bricklayers Arms B&W 17	Interior shot of fixed windows on north-east ground-floor elevation of pub. Photograph taken facing north-east.
Bishops Stortford, Bricklayers Arms B&W 18	Interior shot showing blocked fireplace in public bar of pub. Photograph taken facing south.
Bishops Stortford, Bricklayers Arms B&W 19	Interior shot showing fireplace in public bar of pub. Photograph taken facing north-west.
Bishops Stortford, Bricklayers Arms B&W 20	Interior shot showing bar area in public bar of pub. Photograph taken facing south.
Bishops Stortford, Bricklayers Arms B&W 21	Interior shot showing vertical-planked door leading into public bar from foyer. Photograph taken facing north-east.
Bishops Stortford, Bricklayers Arms B&W 22	Interior shot showing half-glazed door leading into foyer from lounge bar. Photograph taken facing north-east.

Bishops Stortford, Bricklayers Arms B&W 23	Interior shot showing bar area in lounge bar. Photograph taken facing north-east.
Bishops Stortford, Bricklayers Arms B&W 24	Interior shot of extension B. Photograph taken facing south-east.
Bishops Stortford, Bricklayers Arms B&W 25	Exterior shot showing fixed window on east corner of pub. Photograph taken facing west.
Bishops Stortford, Bricklayers Arms B&W 26	Exterior shot of sash window on first-floor south-west elevation of pub. Photograph taken facing north-east.
Bishops Stortford, Bricklayers Arms B&W 27	Exterior shot showing south-west elevation of pub and extension B. Photograph taken facing north.
Bishops Stortford, Bricklayers Arms B&W 28	Exterior shot showing detail of main entrance into pub on south-east elevation. Photograph taken facing north-west.
Bishops Stortford, Bricklayers Arms B&W 29	Exterior shot showing detail of vents above windows on south-east elevation of pub. Photograph taken facing north-west.
Bishops Stortford, Bricklayers Arms B&W 30	Exterior shot showing sash and fixed windows on south-east elevation of pub. Photograph taken facing north-west.
Bishops Stortford, Bricklayers Arms B&W 31	Exterior shot showing detail of pub sign. Photograph taken facing north-west.
Bishops Stortford, Bricklayers Arms B&W 32	Exterior shot of south-east elevation of pub and extension B. Photograph taken facing north-west.
Bishops Stortford, Bricklayers Arms B&W 33	Exterior shot showing sash and fixed windows on north-east elevation of pub. Photograph taken facing south-west.
Bishops Stortford, Bricklayers Arms B&W 34	Exterior shot of north-east elevation of pub and extension A. Photograph taken facing south.
Bishops Stortford, Bricklayers Arms B&W 35	Exterior shot of south- and north east elevation of pub and extensions A and B. Photograph taken facing west.
Bishops Stortford, Bricklayers Arms B&W 36	Exterior shot of south- and north east elevation of pub and extensions A and B. Photograph taken facing west.



© Crown copyright. All rights reserved. Licence number 100039294.

Fig 1 Site location.



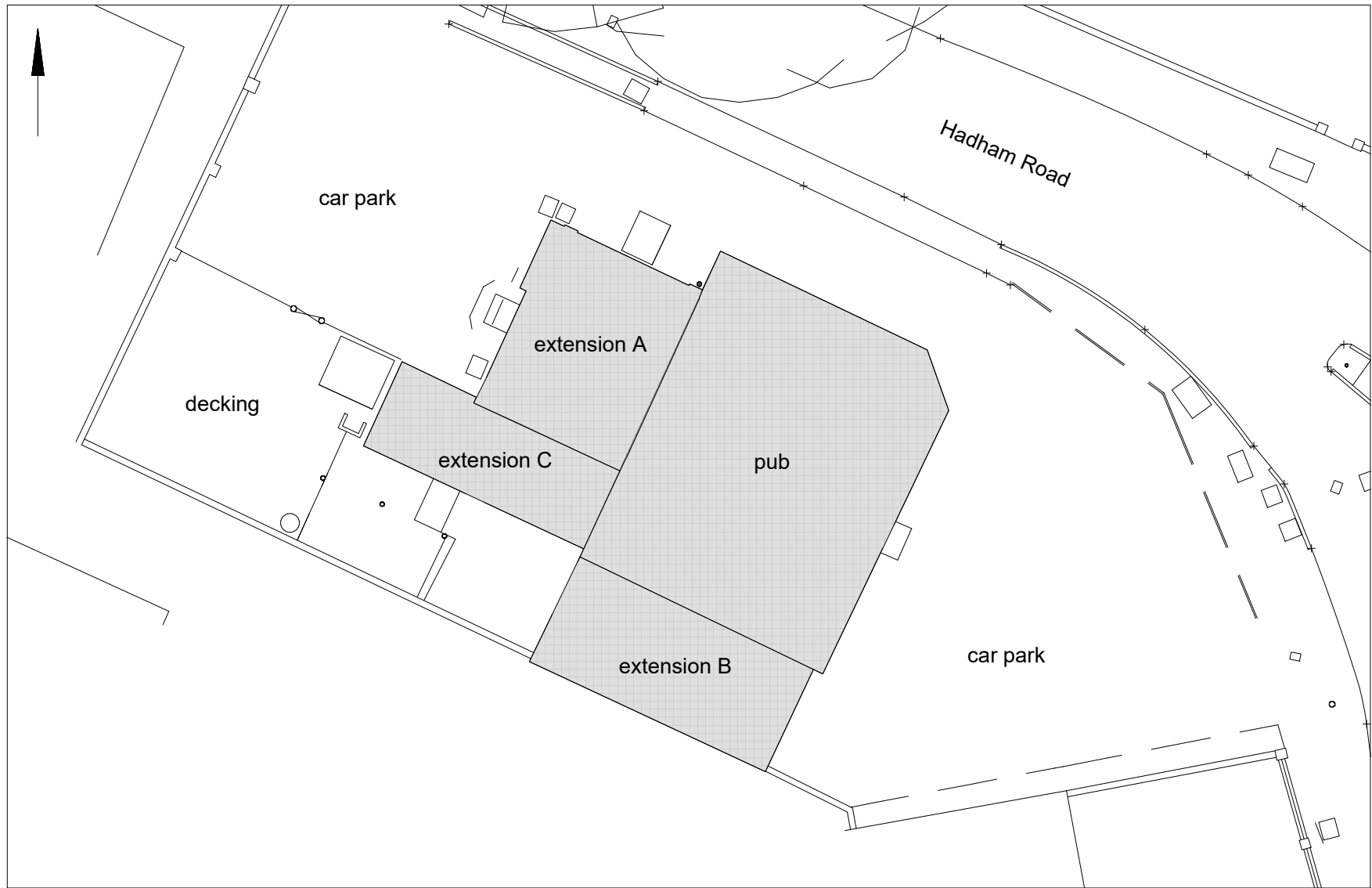
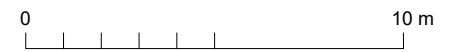


Fig 2 Plan of site showing the footprint of the pub and its three extensions.



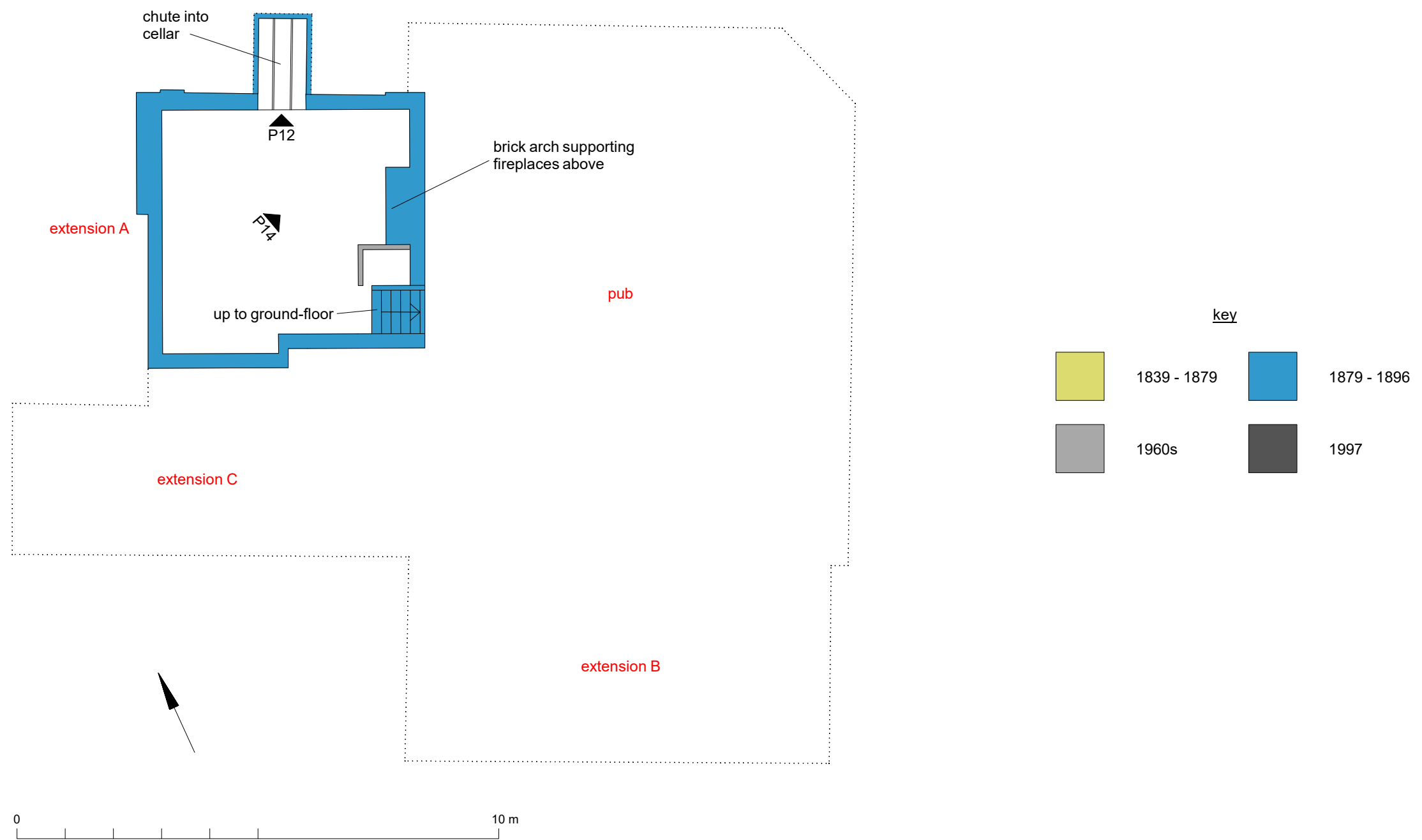


Fig 3 Basement plan of extension A. Location and directions of photographs reproduced in the text shown.

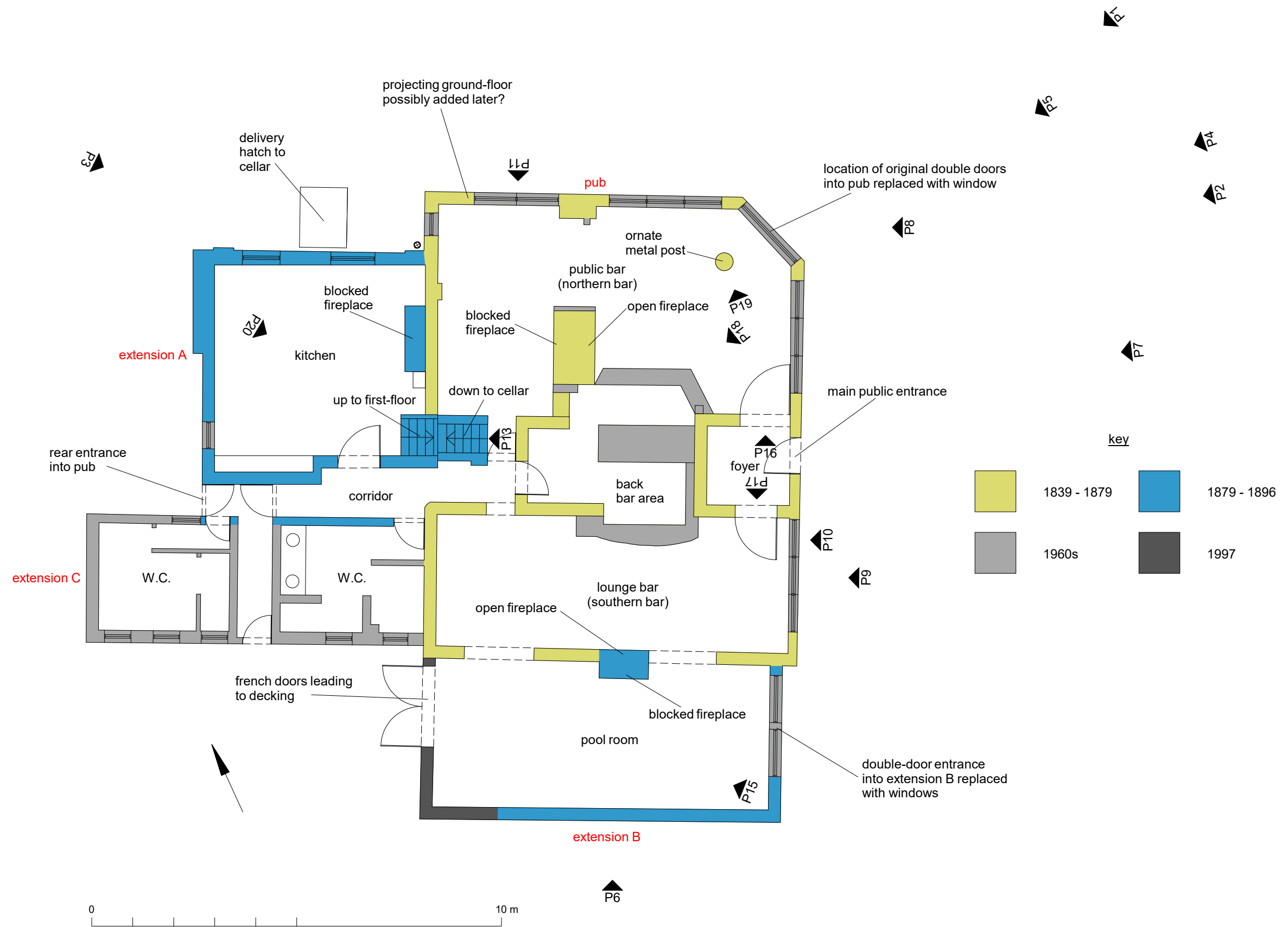


Fig 4 Ground-floor of the pub and its three extensions. Location and directions of photographs reproduced in the text shown.

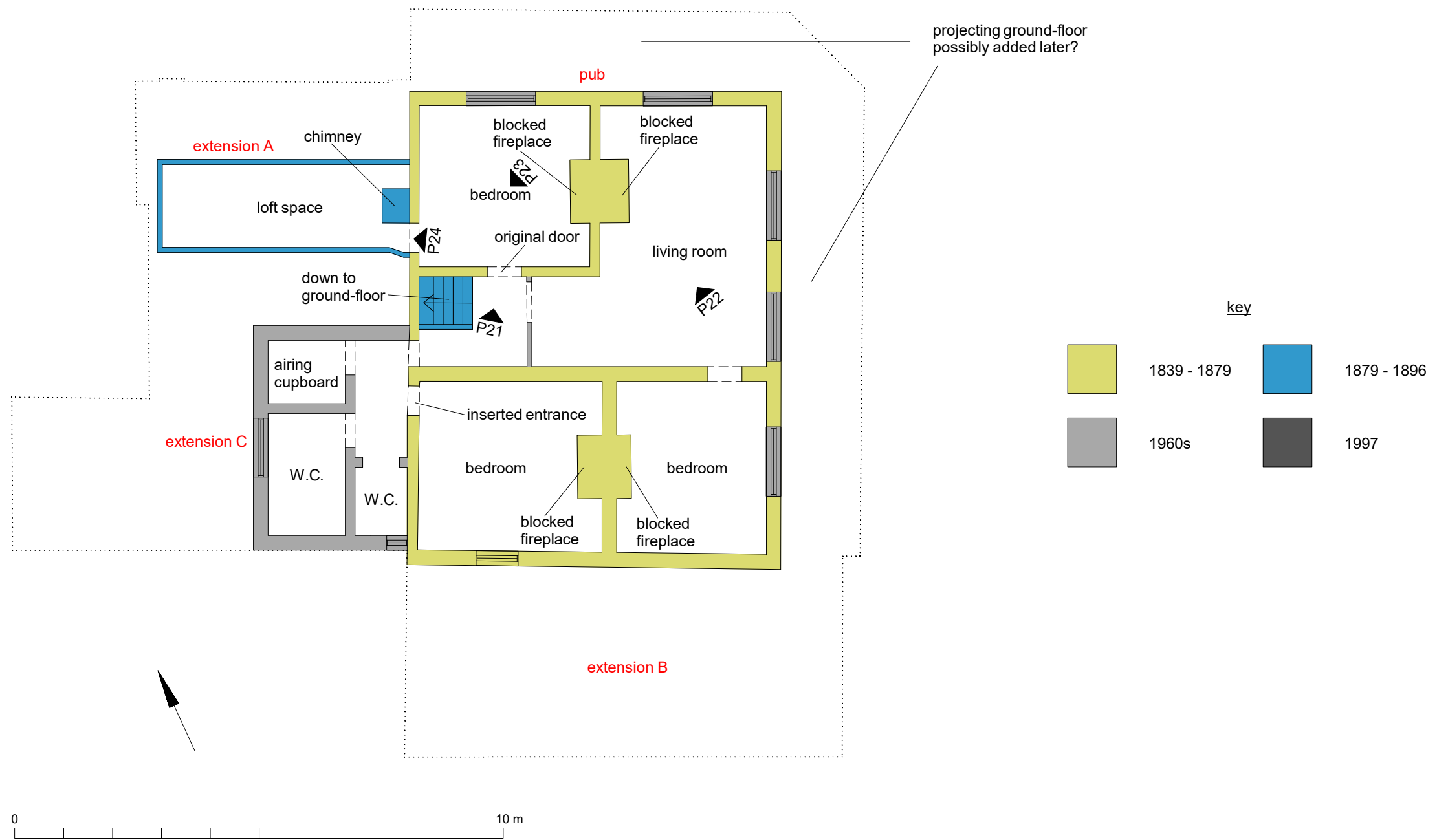


Fig 5 First-floor of the pub and extensions A and C. Location and directions of photographs reproduced in the text shown.



Fig 6 South-east and north-east elevations of the pub and its extensions.

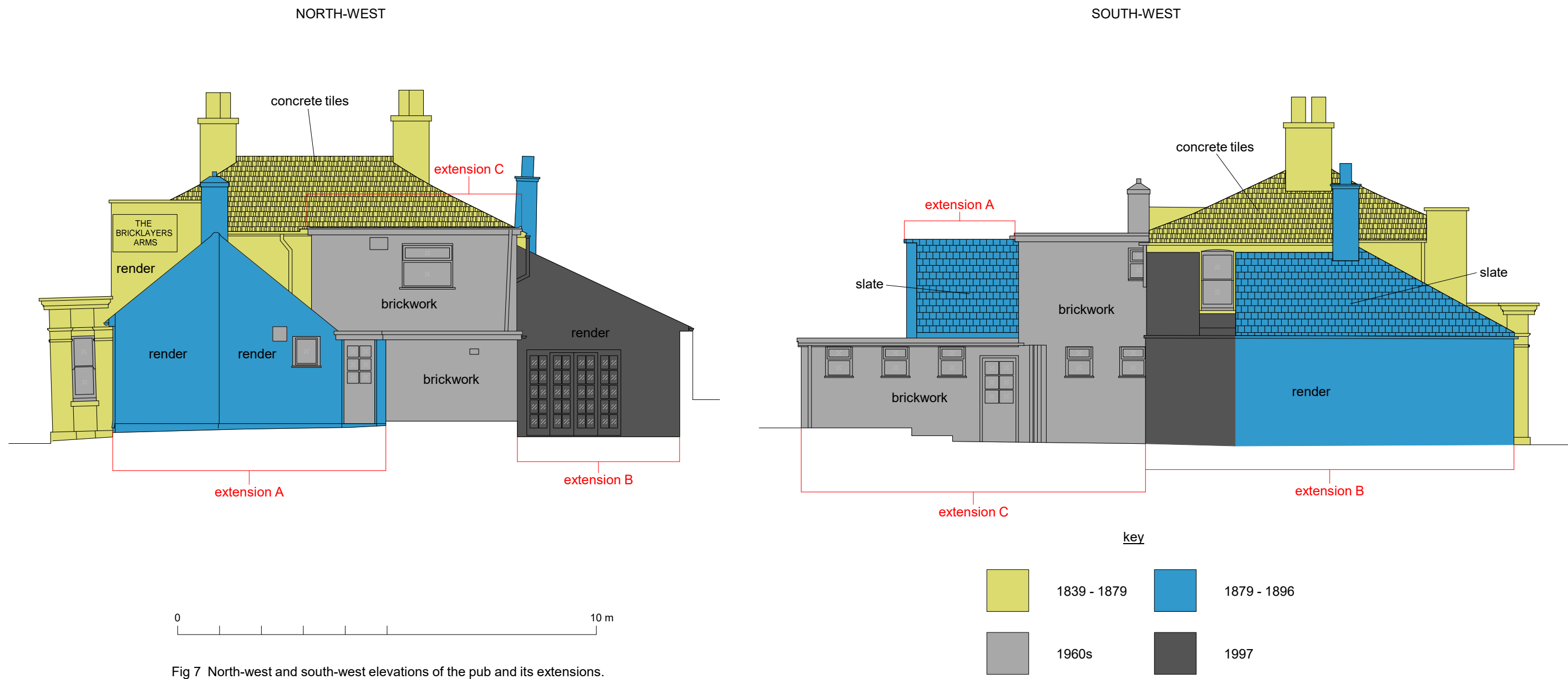


Fig 7 North-west and south-west elevations of the pub and its extensions.

OASIS DATA COLLECTION FORM: England

[List of Projects](#) | [Manage Projects](#) | [Search Projects](#) | [New project](#) | [Change your details](#) | [HER coverage](#) | [Change country](#) | [Log out](#)

Printable version

OASIS ID: colchest3-312761

Project details

Project name	Historic building recording at the Bricklayers Arms, 61 Hadham Road, Bishops Stortford, Hertfordshire CM23 2QY
Short description of the project	A programme of historic building recording was carried out by Colchester Archaeological Trust at the Bricklayers Arms, 61 Hadham Road, Bishops Stortford, Hertfordshire in April 2018. The Bricklayers Arms was constructed in the mid-19th century. It has three extensions, two constructed in the late 19th century and one in the 1960s. Extensive alteration to both the interior and exterior has removed almost all original features in the pub, although an original door remains on the first-floor. The Bricklayers Arms was constructed to provide a place of refreshment for the workers at the nearby brickworks, from which it received its name.
Project dates	Start: 10-04-2018 End: 02-05-2018
Previous/future work	No / No
Any associated project reference codes	18/03q - Contracting Unit No.
Type of project	Building Recording
Site status	Conservation Area
Current Land use	Other 2 - In use as a building
Monument type	PUBLIC HOUSE Post Medieval
Significant Finds	DOOR Post Medieval
Methods & techniques	""Annotated Sketch"", ""Measured Survey"", ""Photographic Survey"", ""Survey/Recording Of Fabric/Structure""
Prompt	National Planning Policy Framework - NPPF

Project location

Country	England
Site location	HERTFORDSHIRE EAST HERTFORDSHIRE BISHOPS STORTFORD Bricklayers Arms, 61 Hadham Road
Postcode	CM23 2QY
Study area	200 Square metres
Site coordinates	TL 48321 21460 51.871498504738 0.154688001025 51 52 17 N 000 09 16 E Point

Project creators

Name of Organisation	Colchester Archaeological Trust
Project brief originator	HEM Team Officer, HCC
Project design originator	Chris Lister
Project director/manager	Chris Lister
Project supervisor	Mark Baister
Type of sponsor/funding body	Developer

Project archives

Physical Archive Exists?	No
Digital Archive recipient	Hertfordshire Archives and Local Studies
Digital Contents	"Survey"
Digital Media available	"Images raster / digital photography", "Text"
Paper Archive recipient	Hertfordshire Archives and Local Studies
Paper Contents	"Survey"
Paper Media available	"Correspondence", "Diary", "Map", "Miscellaneous Material", "Photograph", "Plan", "Report", "Survey "

Project bibliography 1

Publication type	Grey literature (unpublished document/manuscript)
Title	Historic building recording at the Bricklayers Arms, 61 Hadham Road, Bishops Stortford, Hertfordshire CM23 2QY
Author(s)/Editor(s)	Baister, M.
Other bibliographic details	CAT Report 1263
Date	2018
Issuer or publisher	Colchester Archaeological Trust
Place of issue or publication	Colchester
Description	A4 bound report with clear plastic front and opaque black card back.
URL	http://cat.essex.ac.uk/summaries/CAT-1263.html
Entered by	Mark Baister (mb@catuk.org)
Entered on	2 May 2018

OASIS:

Please e-mail [Historic England](#) for OASIS help and advice

© ADS 1996-2012 Created by [Jo Gilham and Jen Mitcham, email](#) Last modified Wednesday 9 May 2012

Cite only: <http://www.oasis.ac.uk/form/print.cfm> for this page

HERTFORDSHIRE HISTORIC ENVIRONMENT RECORD SUMMARY SHEET

Site name and address: Bricklayers Arms, 61 Hadham Road, Bishops Stortford, Hertfordshire, CM23 2QY		
County: Hertfordshire		District: East Hertfordshire
Village/Town: Bishops Stortford		Parish: Bishops Stortford
Planning application reference: 3/17/0350/FUL		
HER Enquiry reference: -		
Funding source: Developer		
Nature of application: Demolition of the Bricklayers Arms public house and the erection of a residential apartment building with nine dwellings		
Present land use: In use as a building		
Size of application area: 652m ²		Size of area investigated: 200m ²
NGR (to 8 figures minimum): TL 48321 21460 (centre)		
Site code (if applicable): CAT project code 18/03q		
Site director/organisation: Colchester Archaeological Trust (CAT)		
Type of work: Historic Building Recording		
Date of work: April 2018	Start: 10th April 2018	Finish: 10th April 2018
Location of finds & site archive/curating museum: Hertfordshire Archives and Local Studies		
Related HER Nos: n/a		Periods represented: Victorian, modern
Relevant previous summaries/reports: n/a		
<p>Summary of fieldwork results: A programme of historic building recording was carried out by Colchester Archaeological Trust at the Bricklayers Arms, 61 Hadham Road, Bishops Stortford, Hertfordshire in April 2018.</p> <p>The Bricklayers Arms was constructed in the mid-19th century. It has three extensions, two constructed in the late 19th century and one in the 1960s. Extensive alteration to both the interior and exterior has removed almost all original features in the pub, although an original door remains on the first-floor. The Bricklayers Arms was constructed to provide a place of refreshment for the workers at the nearby brickworks, from which it received its name.</p>		
Author of summary: Mark Baister		Date of summary: 02.5.2018