

Archaeological recording on land east of The Street, Assington, Suffolk, CO10 5LJ

April–September 2018



by **Laura Pooley**

with contributions by Matthew Loughton and Adam Tuffey
figures by Sarah Carter and Ben Holloway

fieldwork by Ben Holloway with M Baister, R Mathieson and Adam Wightman

**commissioned by Ross Bain
on behalf of Vaughan & Blyth**

NGR: TL 934 383 (centre)
Planning ref: DC/17/06170
CAT project ref.: 18/05f
Suffolk Parish Number: ASN 036
OASIS ref: colchest3-314086



Colchester Archaeological Trust

Roman Circus House,
Roman Circus Walk,
Colchester,
Essex, CO2 7GZ

tel.: 01206 501785
email: lp@catuk.org

CAT Report 1377
February 2019

Contents

1	Summary	1
2	Introduction	1
3	Archaeological and landscape background	1
4	Aims	3
5	Methodology	3
6	Results	3
7	Finds	6
8	Conclusion	7
9	Acknowledgements	7
10	References	7
11	Abbreviations and glossary	8
12	Contents of archive	8
13	Archive deposition	8
	Appendix 1 Context List	10
	Figures	after p10
	CAT WSI	
	OASIS summary sheet	

List of photographs and figures

Cover: Foundation trenches, looking NW

Photograph 1	Access road strip, looking west	4
Photograph 2	Foundation trenches, looking east	5
Photograph 3	Medieval ditch F30, looking west	5
Photograph 4	Attenuation tank fully excavated, looking north	6
Fig 1	Site location	
Fig 2	Development site in relation to nearby archaeological and historic monuments recorded by the Suffolk Historic Environment Record	
Fig 3	Site plan showing the phased results of the monitoring in relation to the results of the archaeological evaluation (trenches and feature numbers shown in grey)	
Fig 4	Feature and representative sections	

1 Summary

Archaeological recording was carried out on land to the east of The Street, Assington, Suffolk during groundworks for ten new dwellings. Located close to the medieval church of St Edmund and Assington Hall, the development site is in an area of prehistoric, medieval and post-medieval activity and close to a number of undated cropmarks. Archaeological evaluation in March 2018 had revealed a Roman or medieval pit, a possible medieval ditch, three post-medieval/modern features (a boundary ditch, ditch and pit) and fourteen undated features. Archaeological monitoring revealed a late medieval ditch, a post-medieval/modern boundary ditch and eleven undated features (ten pits and one ditch).

2 Introduction (Fig 1)

This report presents the results of archaeological monitoring and recording on land to the east of The Street, Assington, Suffolk between 17th April to 11th September 2018. The work was commissioned by Ross Bain, on behalf of Vaughan and Blyth during groundworks for the construction of ten new dwellings, and was undertaken by Colchester Archaeological Trust (CAT).

The Local Planning Authority (Babergh District Council: Planning reference DC/17/06170) was advised by Suffolk County Council Archaeology Service (SCCAS) that this site lies in an area of high archaeological importance, and that, in order to establish the archaeological implications of this application, the applicant should be required to commission a scheme of archaeological investigation in accordance with paragraphs 128, 129 and 132 of the *National Planning Policy Framework* (DCLG 2012).

All archaeological work was carried out in accordance with a *Brief for Continuous Archaeological Recording* detailing the required archaeological work written by Rachael Abraham (SCCAS 2018), and a Written Scheme of Investigation (WSI) prepared by CAT in response to the SCCAS brief and agreed with SCCAS (CAT 2018).

In addition to the brief and WSI, all fieldwork and reporting was done in accordance with English Heritage's *Management of Research Projects in the Historic Environment* (MoRPHE) (English Heritage 2006), and with *Standards for field archaeology in the East of England* (EAA 14 and 24). This report mirrors standards and practices contained in the Institute for Archaeologists' *Standard and guidance for archaeological evaluation* (CIfA 2017a) and *Standard and guidance for the collection, documentation, conservation and research of archaeological materials* (CIfA 2017b).

3 Archaeological and landscape background (Fig 2)

The following archaeological background draws on information from the Suffolk Historic Environment Record (archaeology.her@suffolk.gov.uk), SCC invoice number 9210441.

Geology

The Geology of Britain viewer (1:50,000 scale¹) shows the bedrock geology of the site as 'London Clay Formation – clay, silt and sand' with superficial deposits of 'Lowestoft Formation – sand and gravel'¹.

Historic landscape

Assington is in an area defined as *ancient rolling farmlands* in the Suffolk Landscape Character Assessment². Within the Suffolk Historic Landscape Characterisation Map³ it is defined as landscape sub-type 10.1, built up area (unspecified). The landscape

¹ British Geological Survey – <http://mapapps.bgs.ac.uk/geologyofbritain/home.html?>

² <http://www.suffolklandscape.org.uk/>

³ The Suffolk Historic Landscape Characterisation Map, version 3, 2008, Suffolk County Council

immediately around the development site is primarily characterised as sub-type 1.1 (pre-18th-century enclosure – random fields), sub-type 2.1 (18th-century and later enclosure – former common arable or heathland), sub-type 2.7 (18th-century and later enclosure – woodland clearance), sub-type 3.1/2 (post-1950 agricultural landscape – boundary loss from random fields/rectilinear fields), sub-type 5.1 (meadow or managed wetland – meadow), sub-type 7.1 (woodland – ancient woodland) and sub-type 9.2 (post-medieval park and leisure – informal park).

Archaeology⁴ (Fig 2)

(All measurements are taken from the centre point of the development site to the centre point of the HER monument).

The only prehistoric finds in the vicinity of the development site are a surface scatter of Late Neolithic to Late Bronze Age flints found 870m SSE (ASN 027) and a Bronze Age stone axe-hammer found 1.78km E/ESE (ASN 004).

The medieval church of St Edmund is located 590m NNE (ASN 003), reputedly on the site of the last battle between the English and the Danes. Assington Hall (ASN 001, 500m N) sits adjacent to the church. The hall, which is possibly of 14th-century origin, is supposedly on the site of an earlier monastery. The 16th-century and later red-brick hall was destroyed by fire in 1957, and only the 19th-century west wing is still intact. To the west of Assington Hall is a square moat clearly shown on the Assington tithe map of 1837, named 'The Island' (ASN 008, 545m N). To the east of the church is Assington Green (ASN 013, 600m NNE).

A watermill is also recorded in the Domesday Survey at Assington in 1086 (ASN 009, 1.5km S) and Leaven Hall (LVH 006, 2km SE) is a possible moated site with 15th- or 16th-century house on a central platform.

Several post-medieval monuments are located within 2km of the development site. These consist of:

- 19th-century agricultural buildings at Hill Farm (ASN 025, 180m NNE),
- Assington Park, which was landscaped in 1750 (ASN 012, 700m N),
- an open trestle-type post mill (ASN 031, 1.1km S),
- a brick kiln and cottage recorded on the tithe map of 1837 (ASN 007, 1.5km SSW),
- the site of a possible dovecote (ASN 030, 1.65km NE),
- a 15th-century barn (constructed c 1600) with a 19th-century stable and cattleyard at Goulding's Farm (NEN 010, 2km NW),
- a small quantity of post-medieval fieldwalking and metal-detecting finds (NEN Misc, approximately 1.8km W),
- 19th-century stable block at Moor's Farm (ASN 033, 1.7km SSW),

Undated cropmarks and other monuments include:

- possible fish ponds and dam on a stream course to the south of Assington Hall, with possible house platforms to the east (possibly a deserted village) (ASN 005, 410m NNE),
- two parallel ditch marks (possibly a road) running north-south (ASN 002, 670m NNE),
- cropmarks of ring-ditches (ASN 016, 1.05km NNW; ASN 018 and ASN 019, 1km N; and ASN 026, 1.5km NW),
- cropmarks of park(?) and field boundaries of at least two phases (ASN 017, 1.05km NNW),
- part of an ancient woodland now known as Assington Thicks (ASN 011, 780m SW),

⁴ This is based on records held at the Suffolk County Historic Environment Record (SCHER).

- area of Birch Avery, formerly part of larger ancient woodland known as Assington Thicks (ASN 010, 1.7km SW),
- Ancient woodland at Mumford's & Fitch's Woods (COL 018, 2.1km W), Leadenhall Wood (LVH 002, 1.8km SE) and Lord's Wood (NEN 005, 1.8km WNW).

Listed buildings⁵

As well as the Grade I listed medieval church of St Edmund, 33 Grade II listed buildings, dating from the 15th to the 20th centuries, are located within a 2km search radius of the development site.

2018 archaeological evaluation (CAT Report 1251) (Fig 3)

In March 2018, CAT completed an evaluation (six trial-trenches) on the development site. The evaluation revealed a possible linear of medieval (c 13th- to 14th-century) date (F2), probably located at the periphery of medieval activity which was focussed around the medieval church and Assington Hall to the north. The only other dated features were a pit of Roman or medieval date (F8) and a boundary ditch (F19), pit (F13) and ditch (F3) of post-medieval/modern date. Fourteen undated-features (six pits, three ditches, three natural features/tree-throws, a ground hollow and area of root activity (F1, F4-F7, F9-F12, F14-F19) were also excavated. Recovered from the topsoil was a residual flint flake of Neolithic or Bronze Age date and a quantity of post-medieval/modern agricultural ironwork.

4 Aims

The aims of the archaeological investigation were to:

- excavate and record any archaeological deposits that were identified within the development site.
- identify the date, approximate form and purpose of any archaeological deposit within the application area, together with its likely extent, localised depth and quality of preservation.
- evaluate the likely impact of past land uses, and the possible presence of masking colluvial/alluvial deposits.

5 Methodology

Archaeological monitoring was carried out on all groundworks. All groundworks were mechanically excavated by the contractor under the supervision of a CAT archaeologist. All archaeological horizons were excavated and recorded according to the WSI. For full details of the methodology, refer to the attached WSI.

Due to site constraints, the proposed strip, map and excavation of the area of the attenuation tank did not take place. However, with the agreement of the SCCAS the groundworks in this area were supervised under archaeological monitoring conditions.

6 Results (Figs 3-4)

Note: Layer numbers L1-L2, feature numbers F1-F19 and find numbers 1-19 were given out during the evaluation phase of archaeological investigations (CAT Report 1251).

Access road

The route of the new access road was stripped through modern topsoil (L1, c 0.29-0.35m thick) onto natural sands and gravels (L2). Ditch F20 was recorded on the far western extent of the access road and is a continuation of modern ditch F19 excavated

⁵ This is based on records held at the Suffolk County Historic Environment Record (SCHER).

in T4 during the evaluation. The ditch is present on early OS maps where it turns 90° to the west (see annotated dark red line on Fig 3) but, as F20 continued to the north this may represent an earlier phase of the ditch. Undated features F21-F25 were between 0.4-0.8m in diameter and 0.09-0.2m deep and are probably of natural origin. The route of the private driveway to the north of the access road was stripped of 0.2m of modern topsoil (L1).

Foundation trenches

Foundation trenches for the new dwellings and associated garages were 0.6m wide by 1-1.2m deep and cut through modern topsoil (L1, c 0.29-0.35m thick) into natural sands and gravels (L2). Areas of oversite inside the foundation trenches was also excavated to natural.

Modern ditch F20 was recorded in the southwestern corner of the site. Six undated features (F26-F28 and F31-F33) were also excavated in foundation trenches to the south of the access road. Measuring between 0.6-0.8m in diameter and 0.1-0.37m deep, they are probably natural features. There were no features in foundation trenches to the east of the access road.

Attenuation tank

A trench 16m long by 4m wide was monitored in the location of the proposed attenuation tank with an associated drainage trench to the east. It was cut through modern topsoil (L1, c 0.29-0.37m thick) onto natural sands and gravels (L2). Feature F2, excavated in evaluation trench T1, was not present in the attenuation tank trench and is likely to be a pit rather than a ditch as suggest in CAT Report 1251. Shallow ditches F29 and F30, 0.5m wide by 0.21m deep and 0.63m wide by 0.15m deep respectively, were excavated. Ditch F29 was undated from ditch F30 were eight late medieval pottery sherds indicating a 15th-century date.



Photograph 1 Access road strip, looking west



Photograph 2 Foundation trenches, looking east



Photograph 3 Medieval ditch F30, looking west



Photograph 4 Attenuation tank fully excavated, looking north

7 Finds

7.1 Ceramic finds

by Dr. Matthew Loughton

Monitoring produced a small quantity of medieval pottery: nine sherds with a weight of 182g. Nearly all of this material came from F30. Also found were two pieces of Roman building material (henceforth CBM) (Table 1).

F30 (25): Three sherds of Colchester-type ware (Fabric 21) (76g), including were two rim sherds from a storage jar with a similar example illustrated in *CAR 7* (2000, 135 fig. 87 no. 87). These sherds, with a harder finish and reduced outer surfaces, can be dated to c 1400/1425-1550 (Cotter 2000, 108-109). Five body sherds of medieval sandy greyware pottery (Fabric 20) (25g). This ware is dated from c 1150/1175 to 1375/1400 (*CAR 7* 2000, 91-92). Therefore, F30 can be dated to the late medieval period and the 15th century AD.

L1 (22): One base sherd (81g) of Colchester-type ware (Fabric 21) and two pieces of Roman tegulae (188g).

7.2 Other finds

by Laura Pooley

Burnt flint, fragments of oyster shell and an iron nail came from F29 (23) and F30 (25).

F29 (23): Two pieces of burnt flint (18g) (discarded).

F30 (25): Two pieces of burnt flint (16g) (discarded). Four fragments of oyster shell (10g) (discarded). Two iron nails: 1) complete (16g, 99mm long) with square-sectioned shank clenched at 90° towards the tip and a round flat head (21mm diameter) (Goodall 2011, Type 1 nail, p164); 2) complete horseshoe nail (2g, 39mm long), square-sectioned shank, expanding head no thicker than the shank, probably mid 13th to early 14th century (Clark 1986, Fig 7a).

8 Conclusion

Archaeological monitoring on land to the east of The Street, Assington revealed a medieval ditch of c 15th-century date. Significant medieval archaeology is known from Assington, centred around the church of St Edmund and Assington Hall both located c 500m north of the development site. The hall, which is possibly of 14th-century origin, is also supposedly on the site of an earlier monastery. This ditch, plus pits F2 and probably F8 (excavated during the evaluation), are likely to be associated with medieval occupation at Assington. The only other features recorded were a post-medieval/modern boundary ditch also identified during the evaluation and an undated ditch and eleven probably natural features.

10 Acknowledgements

CAT is grateful to Ross Bain and Vaughan and Blyth for commissioning and funding the project. The project was managed by C Lister, fieldwork was carried out by B Holloway with M Baister, R Mathieson and A Wightman. Figures are by BH, E Holloway and L Pooley. The project was monitored by Hannah Cutler for Suffolk County Council Archaeological Services.

11 References

Note: all CAT reports, except for DBAs, are available online in .pdf format at <http://cat.essex.ac.uk>

- | | | |
|-----------------------------|-------|--|
| Brown, N and Glazenbrook, J | 2000 | <i>Research and Archaeology: a frame work for the Eastern Counties 2 Research agenda and strategy</i> , East Anglian Archaeological, occasional papers 8 (EAA 8) |
| CAR 7 | 1999 | <i>Colchester Archaeological Report 7: Post-Roman pottery from excavations in Colchester, 1971-85</i> , by J Cotter |
| CAT | 2014 | <i>Health & Safety Policy</i> |
| CAT | 2017 | <i>Written Scheme of Investigation (WSI) for continuous archaeological recording and strip, map and excavate on land east of The Street, Assington, Suffolk CO10 5LJ</i> |
| CAT Report 1251 | 2018 | <i>Archaeological evaluation on land east of The Street, Assington, Suffolk, CO10 5LJ: March 2018</i> |
| ClfA | 2008a | <i>Standard and Guidance for an archaeological monitoring</i> |
| ClfA | 2008b | <i>Standard and guidance for the collection, documentation, conservation and research of archaeological materials</i> |
| Clark, J | 1986 | <i>Medieval Horseshoes</i> . Finds Research Group 700-1700, Datasheet 4. |
| Goodall, I H | 2011 | <i>Ironwork in Medieval Britain: An Archaeological Study</i> . The Society for Medieval Archaeology Monograph 31 |
| Gurney, D | 2003 | <i>Standards for field archaeology in the East of England</i> . East Anglian Archaeology Occasional Papers 14 (EAA 14). |
| English Heritage | 2006 | <i>Management of Research Projects in the Historic Environment (MoRPHE)</i> |
| Medlycott, M | 2011 | <i>Research and archaeology revisited: A revised framework for the East of</i> |

MHCLG	2018	<i>England. East Anglian Archaeology Occasional Papers 24 (EAA 24)</i>
SCC	2008	<i>National Planning Policy Framework</i>
SCCAS	2017	<i>The Suffolk Historic Landscape Characterisation Map, version 3</i>
		<i>Archaeological Archives in Suffolk: Guidelines for preparation and deposition</i>
SCCAS/CT	2018	<i>Brief for Continuous Archaeological Recording at The Street, Assington</i>

12 Abbreviations and glossary

Anglo-Saxon	period from c 500 – 1066
Bronze Age	period from c 2500 – 700 BC
CAT	Colchester Archaeological Trust
CIfA	Chartered Institute for Archaeologists
context	a single unit of excavation, which is often referred to numerically, and can be any feature, layer or find.
feature (F)	an identifiable thing like a pit, a wall, a drain, can contain 'contexts'
layer (L)	distinct or distinguishable deposit (layer) of material
medieval	period from AD 1066 to c AD 1500
modern	period from c AD 1800 to the present
natural	geological deposit undisturbed by human activity
Neolithic	period from c 4000 – 2500 BC
NGR	National Grid Reference
OASIS	O nline A ccess to the I ndex of A rchaeological I nvestigations, http://oasis.ac.uk/pages/wiki/Main
post-medieval	from c AD 1500 to c 1800
prehistoric	pre-Roman
residual	something out of its original context, eg a Roman coin in a modern pit
Roman	the period from AD 43 to c AD 410
SCC	Suffolk County Council
SCCAS	Suffolk County Council Archaeological Services
SCHER	Suffolk County Historic Environment Record
section	(abbreviation sx or Sx) vertical slice through feature/s or layer/s
u/s	unstratified, ie without a well-defined context
wsi	written scheme of investigation

13 Contents of archive

Finds: Part of one box

Paper record

One A4 document wallet containing:

The report (CAT Report 1377)

SCCAS evaluation brief, CAT written scheme of investigation

Original site record (feature sheets, finds records, sections)

Digital photographic thumbnails and log

Digital record

The report (CAT Report 1377)

SCCAS evaluation brief, CAT written scheme of investigation

Digital photographs, photographic thumbnails and log

Graphic files

Survey data

14 Archive deposition

The paper archive and finds are currently held by CAT at Roman Circus House, Roman Circus Walk, Colchester, Essex, but will be permanently deposited with SCCAS under Parish Number ASN 036.

© Colchester Archaeological Trust 2019

Distribution list:

Ross Bain, Vaughan & Blyth
Hannah Cutler, SCCAS
Suffolk County Historic Environment Record



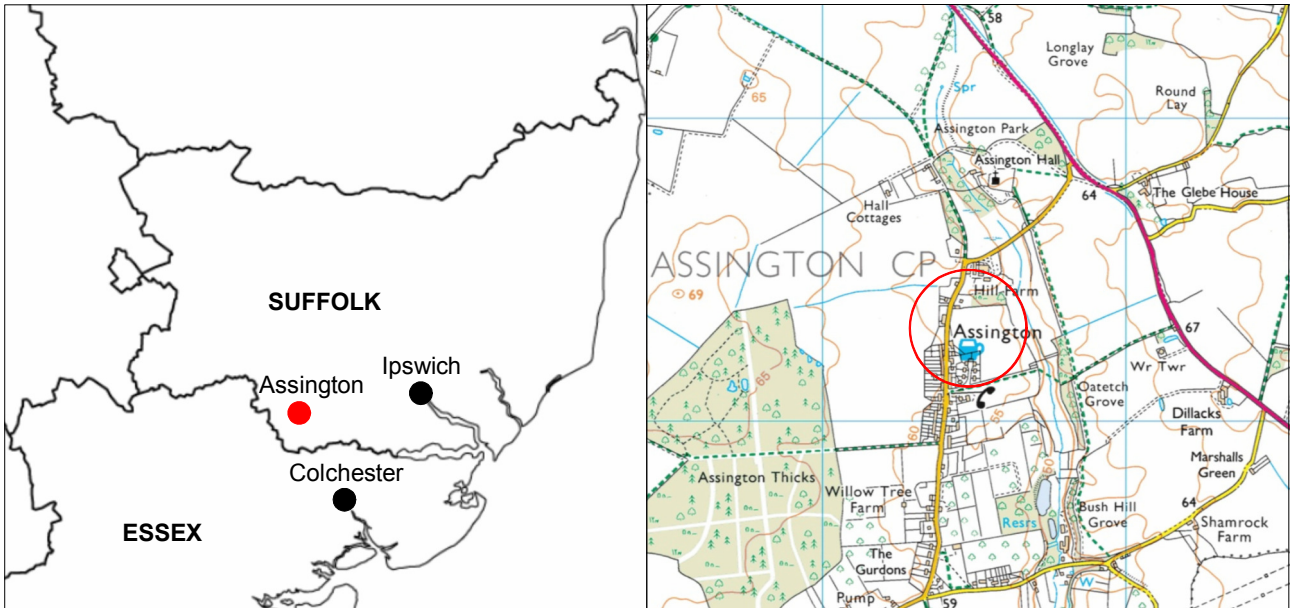
Colchester Archaeological Trust

Roman Circus House,
Roman Circus Walk,
Colchester,
Essex, CO2 7GZ
tel.: 01206 501785
email: lp@catuk.org

checked by: Philip Crummy
date: 20.2.2019

Appendix 1 Context list

Context Number	Finds Number	Context type	Description	Date
L1	22	Topsoil	Loose, soft, moist, very dark grey/brown sandy-loam with abundant stone and gravel, some charcoal and brick inclusions	Modern
L2	-	Natural	Firm, moist, medium yellow sand and gravel.	Post-glacial
F20	-	Ditch	Firm, moist, dark grey/brown silt	Undated
F21	-	?Natural feature	Firm, moist, medium grey/brown silt	?Post-glacial
F22	-	?Natural feature	Firm, moist, medium grey/brown silt	?Post-glacial
F23	-	?Natural feature	Firm, moist, medium grey/brown silt	?Post-glacial
F24	-	?Natural feature	Firm, moist, medium grey/brown silt	?Post-glacial
F25	-	?Natural feature	Firm, moist, medium grey/brown silt	?Post-glacial
F26	-	?Natural feature	Firm, moist, medium grey/brown silty-clay	?Post-glacial
F27	-	?Natural feature	Firm, moist, medium grey/brown silty-clay	?Post-glacial
F28	-	?Natural feature	Firm, moist, medium grey/brown silty-clay	?Post-glacial
F29	23	Ditch	Soft, moist, medium brown sandy-silt with 15% gravel	Undated
F30	25	Ditch	Soft, moist, medium brown sandy-silt with flecks of oyster shell and 20% stone	Medieval, c 15th century
F31	-	?Natural feature	Firm, moist, medium grey/brown silt	?Post-glacial
F32	-	?Natural feature	Firm, moist, medium grey/brown silt	?Post-glacial
F33	-	?Natural feature	Firm, moist, medium grey/brown silt	?Post-glacial



© Crown copyright. All rights reserved. Licence number 100039294.

Fig 1 Site location



Imagery ©2018 Google, Getmapping plc, Infoterra Ltd & Bluesky, Map data ©2018 Google
 HER data ©2018 Suffolk Historic Environment Record, Suffolk County Council

Fig 2 Development site in relation to nearby archaeological and historic monuments recorded by the Suffolk Historic Environment Record



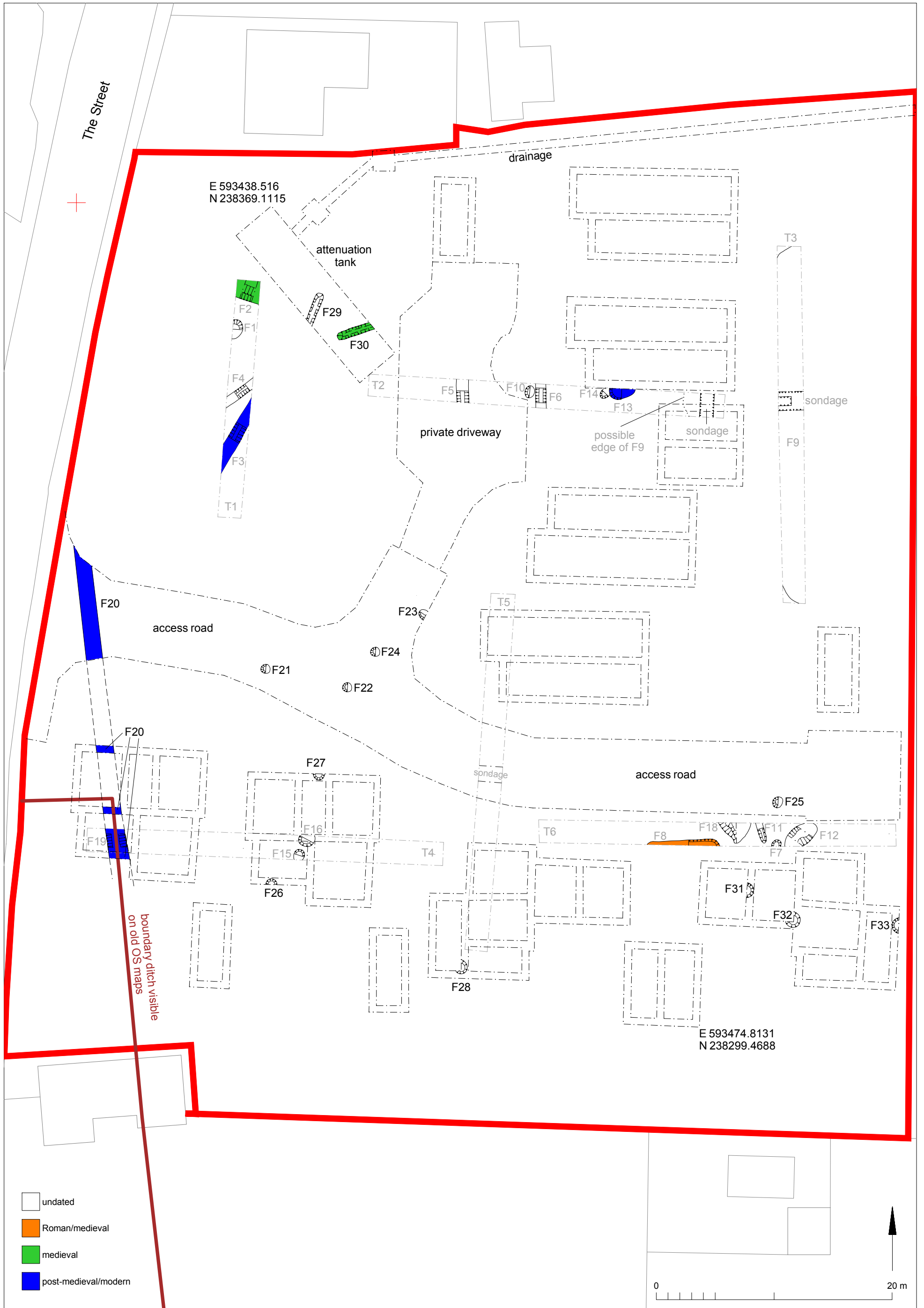
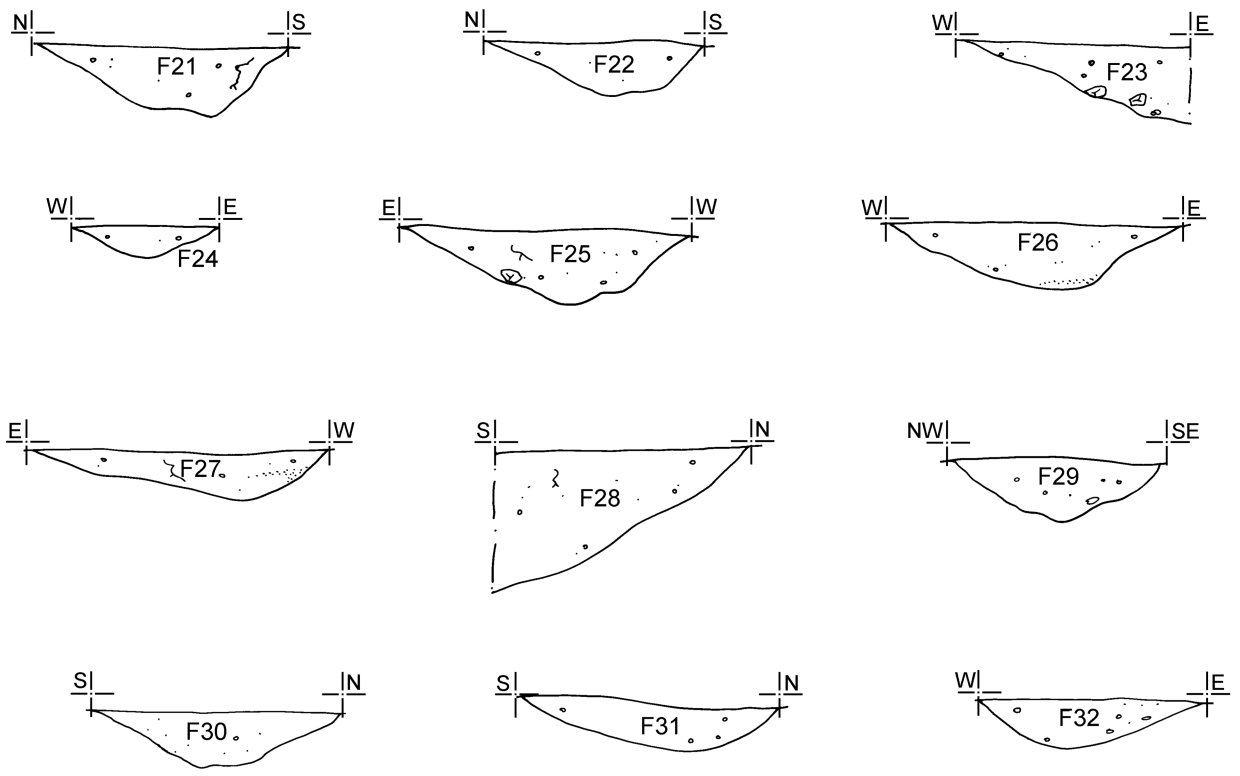
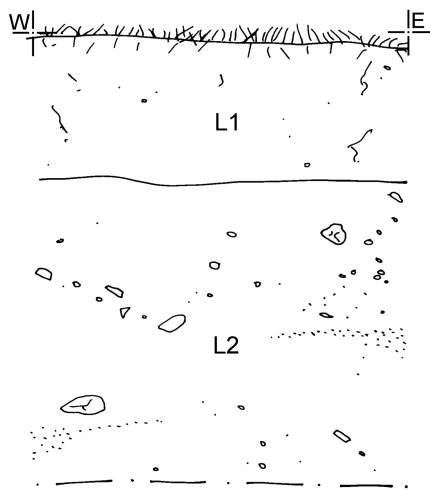


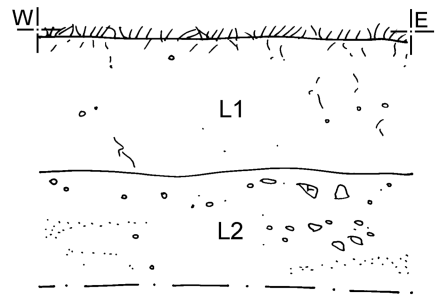
Fig 3 Site plan showing the phased results of the monitoring in relation to the results of the archaeological evaluation (trenches and feature numbers shown in grey).



foundation trench



access road



- sand
- small stones
- large stones
- roots



Fig 4 Feature and representative sections.

Written Scheme of Investigation (WSI) for continuous archaeological recording and strip, map and excavate on land east of The Street, Assington, Suffolk, CO10 5LJ

NGR: TL 934 383 (centre)

Planning references: DC/17/06170

Commissioned by: Ross Bain, Vaughan & Blyth

Client: Vaughan & Blyth

Curating museum: Suffolk County Council Archaeological Service

Suffolk HER parish code: ASN 036

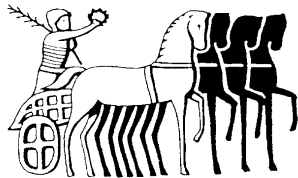
CAT project code: 18/05f

OASIS reference: colchest3-314086

Site manager: Chris Lister

SCCAS monitor: Hannah Cutler

This WSI written: 11.4.2018



COLCHESTER ARCHAEOLOGICAL TRUST,
Roman Circus House,
Roman Circus Walk,
Colchester,
Essex, CO2 7GZ

tel: 01206 501785

email: lp@catuk.org

Site location and description

The development site is located on land east of The Street, Assington, Suffolk (Fig 1). Site centre is NGR TL 934 383.

Proposed work

The development comprises the construction of 10 new dwellings.

Archaeological background

The following archaeological background draws on information from the Suffolk Historic Environment Record (archaeology.her@suffolk.gov.uk), SCC invoice number 9210441.

Geology

The Geology of Britain viewer (1:50,000 scale¹) shows the bedrock geology of the site as 'London Clay Formation – clay, silt and sand' with superficial deposits of 'Lowestoft Formation – sand and gravel'.

Historic landscape

Assington is in an area defined as *ancient rolling farmlands* in the Suffolk Landscape Character Assessment². Within the Suffolk Historic Landscape Characterisation Map³ it is defined as landscape sub-type 10.1, built up area (unspecified). The landscape immediately around the development site is primarily characterised as sub-type 1.1 (pre-18th-century enclosure – random fields), sub-type 2.1 (18th century and later enclosure – former common arable or heathland), sub-type 2.7 (18th-century and later enclosure – woodland clearance), sub-type 3.1/2 (post-1950 agricultural landscape – boundary loss from random fields/rectilinear fields), sub-type 5.1 (meadow or managed wetland – meadow), sub-type 7.1 (woodland – ancient woodland) and sub-type 9.2 (post-medieval park and leisure – informal park).

Archaeology⁴ (Fig 2)

(All measurements are taken from the centre point of the development site to the centre point of the HER monument).

The only prehistoric finds in the vicinity of the development site are a surface scatter of Late Neolithic to Late Bronze Age flints found 870m SSE (ASN 027), and a Bronze Age stone axe-hammer found 1.78km E/ESE (ASN 004).

The medieval Church of St Edmund is located 590m NNE (ASN 003), reputedly on the site of the last battle between the English and the Danes. Assington Hall (ASN 001, 500m N) sits adjacent to the church. The hall, which is possibly of 14th century origin, is supposedly on the site of an earlier monastery. The 16th century and later red brick hall was destroyed by fire in 1957, and only the 19th century west wing is still intact. To the west of Assington Hall is a square moat clearly shown on the Assington tithe map of 1837, named 'The Island' (ASN 008, 545m N). To the east of the church is Assington Green (ASN 013, 600m NNE).

A watermill is also recorded in the Domesday Survey at Assington in 1086 (ASN 009, 1.5km S) and Leaven Hall (LVH 006, 2km SE) is a possible moated site with 15th or 16th century house on a central platform.

Several post-medieval monuments are located within 2km of the development site. These consist of:

- 19th century agricultural buildings at Hill Farm (ASN 025, 180m NNE),
- Assington Park, which was landscaped in 1750 (ASN 012, 700m N),
- an open trestle-type post mill (ASN 031, 1.1km S),
- a brick kiln and cottage recorded on the tithe map of 1837 (ASN 007, 1.5km SSW),

¹ British Geological Survey – <http://mapapps.bgs.ac.uk/geologyofbritain/home.html?>

² <http://www.suffolklandscape.org.uk/>

³ The Suffolk Historic Landscape Characterisation Map, version 3, 2008, Suffolk County Council

⁴ This is based on records held at the Suffolk County Historic Environment Record (SCHER).

- the site of a possible dovecote (ASN 030, 1.65km NE),
- a 15th century barn (constructed c 1600) with a 19th century stable and cattleyard at Goulding's Farm (NEN 010, 2km NW).
- a small quantity of post-medieval fieldwalking and metal-detecting finds (NEN Misc, approximately 1.8km W)

Undated cropmarks and other monuments include:

- possible fish ponds and dam on a stream course to the south of Assington Hall, with possible house platforms to the east (possibly a deserted village) (ASN 005, 410m NNE),
- two parallel ditch marks (possibly a road) running north-south (ASN 002, 670m NNE),
- cropmarks of ring-ditches (ASN 016, 1.05km NNW; ASN 018 and ASN 019, 1km N; and ASN 026, 1.5km NW),
- cropmarks of park(?) and field boundaries of at least two phases (ASN 017, 1.05km NNW),
- part of an ancient woodland now known as Assington Thicks (ASN 011, 780m SW),
- area of Birch Avery, formerly part of larger ancient woodland known as Assington Thicks (ASN 010, 1.7km SW),
- 19th century stable block at Moor's Farm (ASN 033, 1.7km SSW),
- Ancient woodland at Mumford's & Fitch's Woods (COL 018, 2.1km W), Leadenhall Wood (LVH 002, 1.8km SE) and Lord's Wood (NEN 005, 1.8km WNW).

Listed buildings⁵

As well as the Grade I listed medieval Church of St Edmund, there are a further 33 Grade II listed buildings, dating from the 15th to the 20th century, within a 2km search radius of the development site.

2018 archaeological evaluation (CAT Report 1251) (Fig 3)

In March 2018, CAT completed an evaluation (six trial-trenches) on the development site. The evaluation revealed a possible linear of medieval (c 13th- to 14th-century) date, probably located at the periphery of medieval activity which was focussed around the medieval church and Assington Hall to the north. The only other dated features were a pit of Roman or medieval date, and a boundary ditch, pit and ditch of post-medieval/modern date. Fourteen undated features (six pits, three ditches, three natural features/tree-throws, a ground hollow and area of root activity) were also excavated. Recovered from the topsoil was a residual flint flake of Neolithic or Bronze Age date and a quantity of post-medieval/modern agricultural ironwork.

Planning background

The site lies within an area highlighted by the Suffolk HER as having a high potential for archaeological deposits, and significant archaeological remains were identified during the March 2018 archaeological evaluation. It was therefore recommended by the Suffolk County Council Archaeological Service (SCCAS) that continuous archaeological monitoring and an archaeological strip, map and excavate take place to provide a record of archaeological deposits which are damaged or removed by any development (including services and landscaping) permitted by the current planning consent.

Requirement for work (Fig 3)

The required archaeological work is for continuous archaeological monitoring and recording during all groundworks with the addition of a strip, map and excavate in the northwest corner of the site and along the access road. Details are given in a Project Brief written by SCCAS (2018):

Continuous archaeological monitoring

All groundworks (foundation trenches, services, landscaping) and the upcast soil will be closely monitored during and after excavation by a CAT archaeologist, and subject to a metal-detecting survey, in order to ensure no damage occurs to any heritage assets. Adequate time will be allowed for cleaning of the archaeological horizon (where encountered), the

⁵ This is based on records held at the Suffolk County Historic Environment Record (SCHER).

archaeological recording of archaeological deposits (where encountered), and the recording of soil sections following excavation.

Strip, map and excavate

A strip, map and excavate will take place within the attenuation basin in the northwest corner of the site and along the access road. As per a site strip for archaeological excavation, the soil will be removed to archaeological levels under the supervision of a CAT archaeologist, with a back-acting machine and a flat bucket. However, it is anticipated that the archaeological remains are less dense across these areas, and the work may be more closely tied to site preparation. Therefore, they would be scope for the SCCAS to assess the excavation method and sampling strategy once the area is stripped. However, sufficient time will be allowed to excavate and record archaeological remains encountered.

The method and form of the development will be monitored to ensure that it conforms to previously agreed locations and techniques upon which the brief and this WSI is based. In the case of inclement weather conditions during groundworks, causing deep rutting which could lead to damage of underlying archaeological remains (otherwise protected and preserved in situ), the SCCAS will be informed immediately. In this case, the SCCAS may decide to review the archaeological strategy and revise it to full excavation.

If unexpected remains are encountered during the monitoring or strip, map and excavate, the SCCAS will be informed immediately, and amendments to the brief and this WSI may be required to ensure adequate provision for archaeological recording. This will be the decision of the SCCAS.

All work will take place within and contribute to the goals of the Regional research frameworks (Gurney 2003, Medlycott 2011).

Staffing

The number of field staff for this project is estimated as follows: One CAT archaeologist for the duration of the groundworks, with extra CAT staff available (if necessary) for the strip, map and excavate.

In charge of day-to-day site work: Ben Holloway

General methodology

All work carried out by CAT will be in accordance with:

- professional standards of the Chartered Institute for Archaeologists, including its *Code of Conduct* (CIfA 2008a, b)
- Standards and Frameworks published by East Anglian Archaeology (Gurney 2003, Medlycott 2011)
- relevant Health & Safety guidelines and requirements (CAT 2014)
- the Project Brief issued by SCCAS (2018)
- The outline specification within *Requirements for Excavation* (SCCAS 2017a) to be used alongside the Project Brief.

Professional CAT field archaeologists will undertake all specified archaeological work, for which they will be suitably experienced and qualified.

Notification of the supervisor/project manager's name and the start date for the project will be provided to SCCAS ten days before start of work.

Unless it is the responsibility of other site contractors, CAT will study mains service locations and avoid damage to these.

Prior to the commencement of the site a HER parish code will be sought from the HER team. The HER parish code will be used to identify the finds bags and boxes, and the project archive when it is deposited at the curating museum.

At the start of work (immediately before fieldwork commences) an OASIS online record <http://ads.ahds.ac.uk/project/oasis/> will be initiated and key fields completed on Details, Location and Creators forms. At the end of the project all parts of the OASIS online form will be completed for submission to SCCAS. This will include an uploaded .PDF version of the entire report.

Monitoring methodology

There will be continuous on-site attendance by CAT staff to maintain a watch on all contractors' groundworks associated with the attenuation basin and access road to fully record any archaeological features or deposits.

All topsoil removal and ground reduction will be done either by hand or with a mechanical excavator using a toothless bucket under the supervision and to the satisfaction of a professional archaeologist.

If archaeological features or deposits are uncovered, time will be allowed for these to be excavated, planned and recorded.

There will be sufficient excavation to give clear evidence for the period, depth and nature of any archaeological deposit. Where possible, for linear features 1m wide sections will be excavated across their width to a total of 10% of the overall length. Discrete features, such as pits, will have 50% of their fills excavated, although certain features may be fully excavated. Complex archaeological structures such as walls, kilns, ovens or burials will be carefully cleaned, planned and fully recorded, but where possible left *in situ*. Only if it can be demonstrated that the complex structure/feature is likely to be destroyed by groundworks, and only then after discussion with the SCCAS/CT, will it be removed.

Fast hand-excavation techniques involving (for instance) picks, forks and mattocks will not be used on complex stratigraphy.

All features and layers or other significant deposits will be planned, and their profiles or sections recorded. The normal scale will be site plans at 1:20 and sections at 1:10, unless circumstances indicate that other scales would be appropriate.

A metal detector will be used by the attending archaeologist to examine the site, spoil heaps and features, and the finds recovered.

Individual records of excavated contexts, layers, features or deposits will be entered on pro-forma record sheets. Registers will be compiled of finds, small finds and soil samples.

The photographic record will consist of general site shots, and shots of all archaeological features and deposits. A photographic scale (including north arrow) shall be included in the case of detailed photographs. Standard "record" shots of contexts will be taken on a digital camera. A photographic register will accompany the photographic record. This will detail as a minimum feature number, location, and direction of shot.

If exceptional or significant archaeological deposits are encountered CAT will inform SCCAS/CT and these may be reviewed on site.

Strip, map and excavate methodology

Where appropriate, modern overburden and any topsoil stripping/levelling will be performed using a mechanical excavator equipped with a toothless ditching bucket under the supervision and to the satisfaction of a professional archaeologist. If no archaeologically significant deposits are exposed, machine excavation will continue until natural subsoil is reached.

Where necessary, areas will be cleaned by hand to ensure the visibility of archaeological deposits.

If archaeological features or deposits are uncovered, time will be allowed for these to be excavated, planned and recorded.

There will be sufficient excavation to give clear evidence for the period, depth and nature of any archaeological deposit. For linear features 1m wide sections will be excavated across their width to a total of 10% of the overall length. Discrete features, such as pits, will have 50% of their fills excavated, although certain features may be fully excavated. Complex archaeological structures such as walls, kilns, ovens or burials will be carefully cleaned, planned and fully recorded, but where possible left *in situ*. Only if it can be demonstrated that the complex structure/feature is likely to be destroyed by groundworks, and only then after discussion with the SCCAS, will it be removed.

Fast hand-excavation techniques involving (for instance) picks, forks and mattocks will not be used on complex stratigraphy.

A representative section will be drawn of each area of groundworks, to include ground level, and the depth of machining.

Trained CAT staff will use a metal detector to scan all areas of the strip and map both before and during excavation. All spoil heaps will be scanned and finds recovered.

Individual records of excavated contexts, layers, features or deposits will be entered on pro-forma record sheets. Registers will be compiled of finds, small finds and soil samples.

All features and layers or other significant deposits will be planned, and their profiles or sections recorded. The normal scale will be site plans at 1:20 and sections at 1:10, unless circumstances indicate that other scales would be appropriate.

The photographic record will consist of general site shots, and shots of all archaeological features and deposits. A photographic scale (including north arrow) shall be included in the case of detailed photographs. Standard "record" shots of contexts will be taken on a digital camera. A photographic register will accompany the photographic record. This will detail as a minimum feature number, location, and direction of shot.

Site surveying

Areas of groundworks and any features will be surveyed by Total Station, unless the particulars of the features indicate that manual planning techniques should be employed. Normal scale for archaeological site plans and sections is 1:20 and 1:10 respectively, unless circumstances indicate that other scales would be more appropriate.

The site grid will be tied into the National Grid. Corners of excavation areas will be located by NGR coordinates.

Environmental sampling policy

The number and range of samples collected will be adequate to determine the potential of the site, with particular focus on palaeoenvironmental remains including both biological remains (e.g. plants, small vertebrates) and small sized artefacts (e.g. smithing debris), and to provide information for sampling strategies on any future excavation. Samples will be collected for potential micromorphical and other pedological sedimentological analysis. Environmental bulk samples will be 40 litres in size (assuming context is large enough)

Sampling strategies will address questions of:

- the range of preservation types (charred, mineral-replaced, waterlogged), and their quality
- concentrations of macro-remains
- and differences in remains from undated and dated features
- variation between different feature types and areas of site

CAT has an arrangement with Val Fryer/Lisa Gray whereby any potentially rich environmental layers or features will be appropriately sampled as a matter of course. Trained CAT staff will process the samples (unless complex or otherwise needing specialist processing) and the flots will be sent to VF/LG for reporting.

Should any complex, or otherwise outstanding deposits be encountered, VF/LG will be asked onto site to advise. Waterlogged 'organic' features will always be sampled. In all cases, the advice of VF/LG and/or the Historic England Regional Advisor in Archaeological Science (East of England) on sampling strategies for complex or waterlogged deposits will be followed, including the taking of monolith samples.

Human remains

CAT follows the policy of leaving human remains *in situ* unless there is a clear indication that the remains are in danger of being compromised as a result of their exposure. If circumstances indicated it were prudent or necessary to remove remains from the site during the monitoring, the following criteria would be applied; if it is clear from their position, context, depth, or other factors that the remains are ancient, then normal procedure is to apply to the Department of Justice for a licence to remove them. In that case, conditions laid down by the license will be followed. If it seems that the remains are not ancient, then the coroner, the client, and SCCAS will be informed, and any advice and/or instruction from the coroner will be followed.

Photographic record

The photographic record will consist of general site shots, and shots of all archaeological features and deposits. A photographic scale (including north arrow) shall be included in the case of detailed photographs. Standard "record" shots of contexts will be taken on a digital camera. A photographic register will accompany the photographic record. This will detail as a minimum feature number, location, and direction of shot.

Finds

All significant finds will be retained.

All finds, where appropriate, will be washed and marked with site code and context number.

Stephen Benfield (CAT) normally writes our finds reports. Some categories of finds are automatically referred to other CAT specialists:

animal bones (small groups): Alec Wade / Adam Wightman

small finds, metalwork, coins, etc: Laura Pooley

flints: Adam Wightman

or to outside specialists:

animal bones (large groups) and human remains: Julie Curl (*Sylvanus*)

environmental processing and reporting: Val Fryer / Lisa Gray

conservation of finds: staff at Colchester Museum / Laura Ratcliffe (LR Conservation)

Other specialists whose opinion can be sought on large or complex groups include:

Roman brick/tile: Ernest Black

Roman glass: Hilary Cool

Prehistoric pottery: Paul Sealey

Other: EH Regional Advisor in Archaeological Science (East of England).

All finds of potential treasure will be removed to a safe place, and reported immediately to the Suffolk FLO (Finds Liaison Office) who will inform the coroner within 14 days, in accordance with the rules of the Treasure Act 1996. The definition of treasure is given in pages 3-5 of the Code of Practice of the above act. This refers primarily to gold or silver objects.

Requirements for conservation and storage of finds will be agreed with SCCAS and carried out as per their guidelines (SCCAS 2017b).

Results

Notification will be given to SCCAS when the fieldwork has been completed.

An appropriate archive will be prepared to minimum acceptable standards outlined in *Management of Research Projects in the Historic Environment* (English Heritage 2006).

The draft final report will be submitted within 6 months of the end of fieldwork for approval by SCCAS.

The approved final report will normally be submitted to SCCAS as both a PDF and a hard copy.

The report will contain:

- The aims and methods adopted in the course of the archaeological project
- Location plan of the area in relation to the proposed development.
- Section/s drawings showing depth of deposits from present ground level with Ordnance Datum, vertical and horizontal scale.
- Archaeological methodology and detailed results including a suitable conclusion and discussion and results referring to Regional Research Frameworks (EAA8, EAA14 & EAA24).
- All specialist reports or assessments
- A concise non-technical summary of the project results
- Appendices to include a copy of the completed OASIS summary sheet and the approved WSI

Results will be published, to at least a summary level, in the PSIAH (Proceedings of the Suffolk Institute of Archaeology and History) annual round up should archaeological remains be encountered in the evaluation. An allowance will be made for this in the project costs for the report.

Final reports are also published on the CAT website and on the OASIS website.

Archive deposition

The archive will be deposited with the Suffolk County Council Archaeological Service as per their archive guidelines (SCCAS 2017b).

If the finds are to remain with the landowner, a full copy of the archive will be housed with the SCCAS.

The archive will be deposited with the SCCAS within 3 months of the completion of the final publication report, with a summary of the contents of the archive supplied to SCCAS.

Monitoring

SCCAS will be responsible for monitoring progress and standards throughout the project, and will be kept regularly informed during fieldwork, post-excavation and publication stages.

Notification of the start of work will be given SCCAS one week in advance of its commencement.

Any variations in this WSI will be agreed with SCCAS prior to them being carried out.

SCCAS will be notified when the fieldwork is complete.

The involvement of SCCAS shall be acknowledged in any report or publication generated by this project.

Education and outreach

The CAT website (www.thecolchesterarchaeologist.co.uk) is updated regularly with information on current sites. Copies of our reports (grey literature) can be viewed on the website and downloaded for free. A magazine (*The Colchester Archaeologist Vol 28* out now)

summarises all our sites and staff regularly give lectures to groups, societies and schools (a fee may apply). CAT also works alongside the Colchester Archaeological Group (providing a venue for their lectures and library) and the local Young Archaeologists Club.

CAT archaeologists can be booked for lectures and information on fees can be obtained by contacting the office on 01206 501785.

References

- | | | |
|------------------------------|-------|---|
| Brown, N and Glazenbrook, J. | 2000 | <i>Research and Archaeology: a frame work for the Eastern Counties 2 Research agenda and strategy</i> , East Anglian Archaeology, occasional papers 8 (EAA 8) |
| CAT | 2014 | <i>Health & Safety Policy</i> |
| CifA | 2008a | <i>Standard and Guidance for an archaeological evaluation</i> |
| CifA | 2008b | <i>Standard and guidance for the collection, documentation, conservation and research of archaeological materials</i> |
| DCLG | 2012 | <i>National Planning Policy Framework</i> |
| Gurney, D | 2003 | <i>Standards for field archaeology in the East of England</i> . East Anglian Archaeology Occasional Papers 14 (EAA 14). |
| English Heritage | 2006 | <i>Management of Research Projects in the Historic Environment (MoRPHE)</i> |
| Medlycott, M | 2011 | <i>Research and archaeology revisited: A revised framework for the East of England</i> . East Anglian Archaeology Occasional Papers 24 (EAA 24) |
| SCC | 2008 | <i>The Suffolk Historic Landscape Characterisation Map, version 3</i> |
| SCCAS | 2017a | <i>Requirements for Archaeological Excavation (version 1.3)</i> |
| SCCAS | 2017b | <i>Archaeological Archives in Suffolk: Guidelines for preparation and deposition</i> |
| SCCAS | 2018 | <i>Brief for Continuous Archaeological Recording at The Street, Assington</i> , by H Cutler, April 2018 |

L Pooley



Colchester Archaeological Trust,
Roman Circus House,
Roman Circus Walk,
Colchester,
Essex, CO2 7GZ

tel: 01206 501785
email: lp@catuk.org

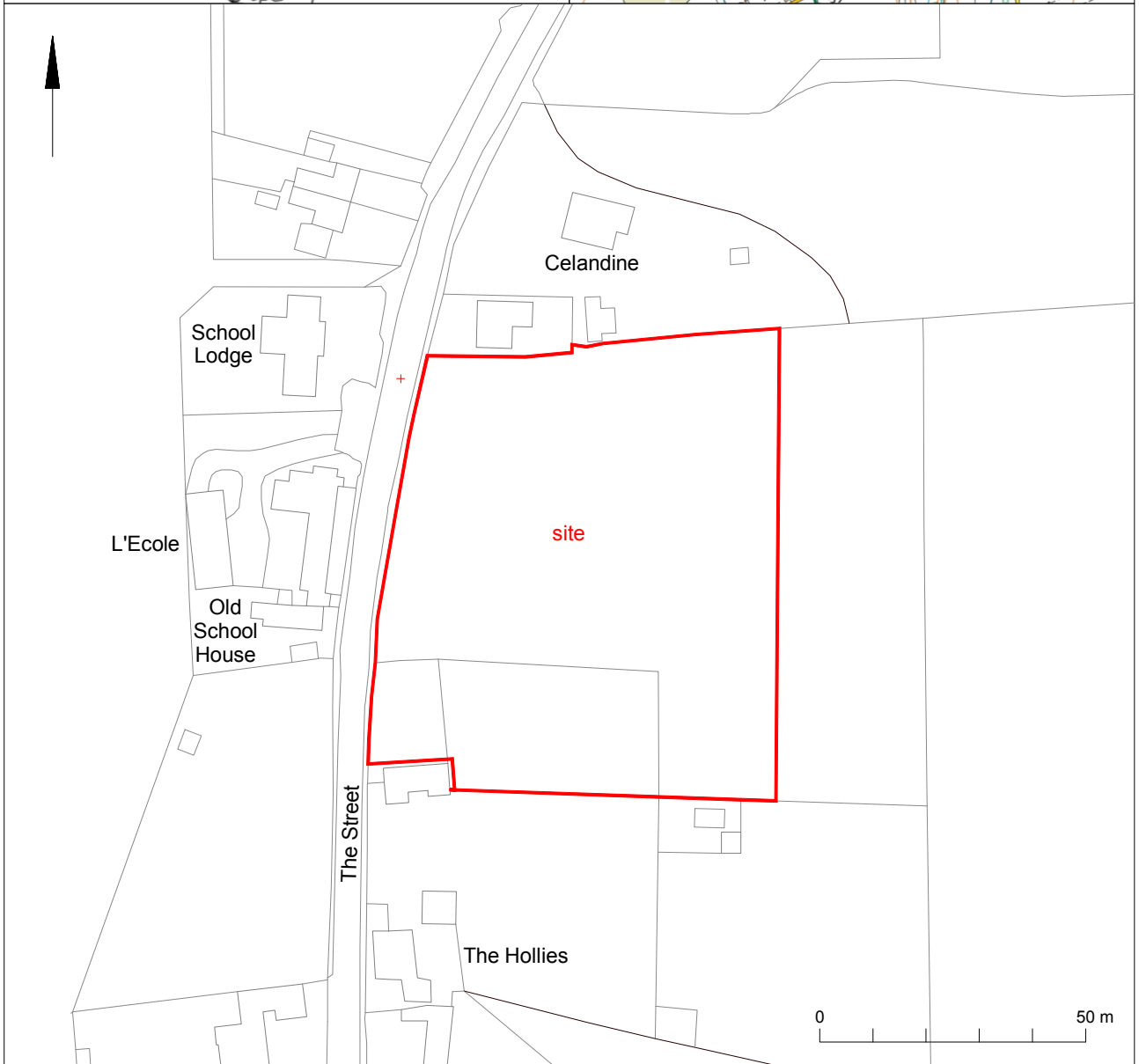
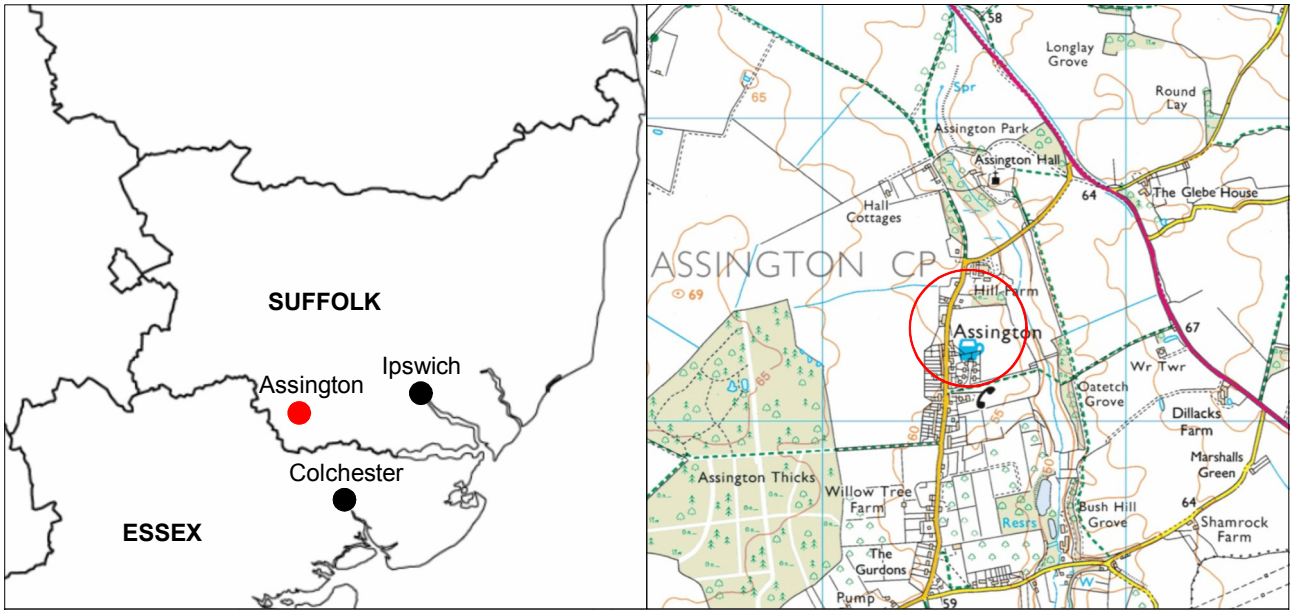


Fig 1 Site location



Imagery ©2018 Google, Getmapping plc, Infoterra Ltd & Bluesky, Map data ©2018 Google
 HER data ©2018 Suffolk Historic Environment Record, Suffolk County Council

Fig 2 Development site in relation to nearby archaeological and historic monuments recorded by the Suffolk Historic Environment Record



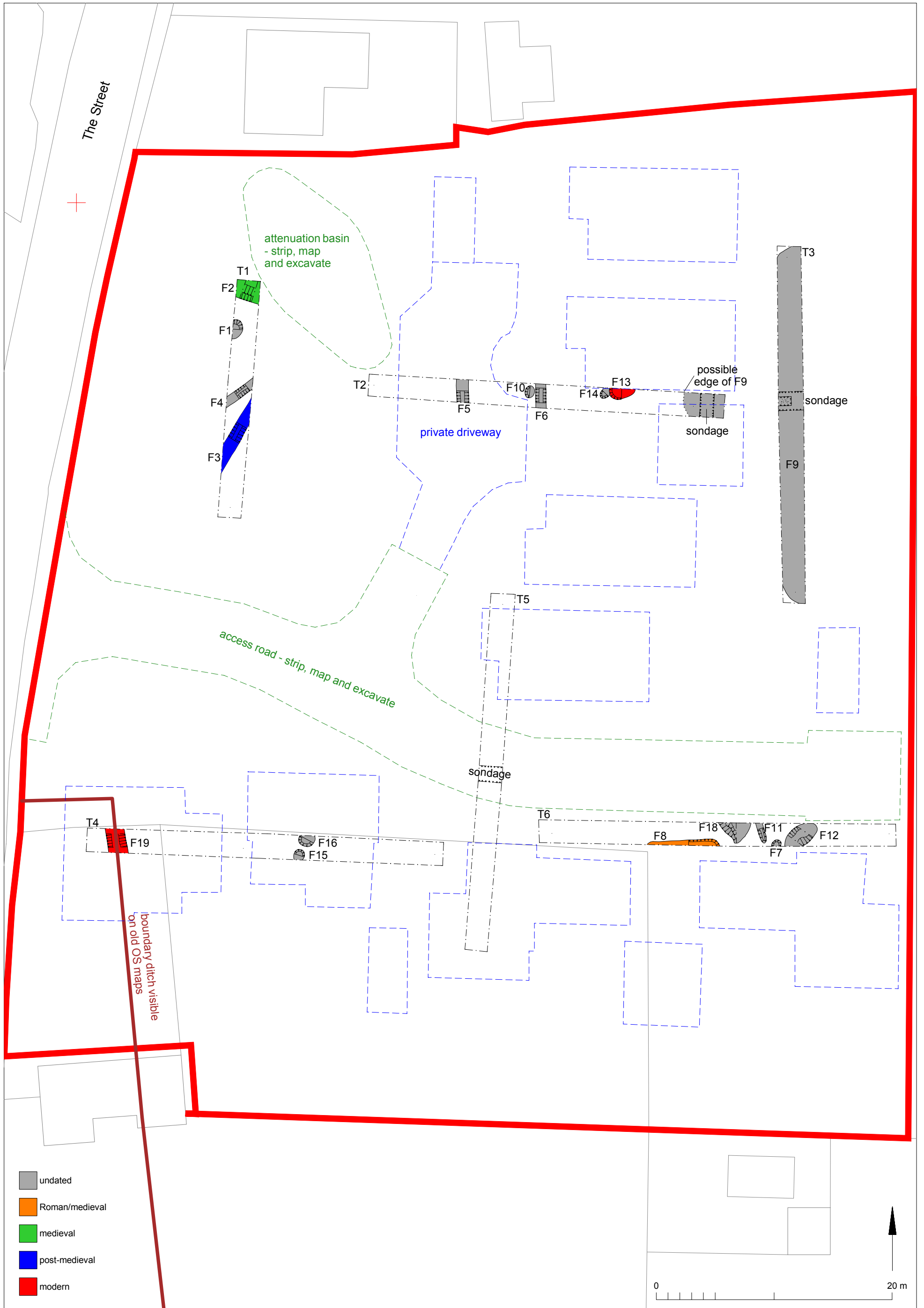


Fig 3 Site plan showing results of the March 2018 archaeological evaluation, the areas of proposed strip, map and excavate (dashed green) and main areas of groundworks (dashed blue, all buildings unless otherwise stated)

OASIS DATA COLLECTION FORM England

[List Projects](#) | [Manage Projects](#) | [Search Projects](#) | [New Project](#) | [Change Outlets](#) | [HE Coverage](#) | [Change Country](#) | [Logout](#)

Printable version

OASIS Colchest3-314086

Project details

Project name	Archaeological monitoring of a east of the tree Assington, Suffolk, CO15LJ	
Short description of the project	Archaeological recording carried out to the east of the tree Assington, Suffolk, n. Sissington, in the development area at top marks. Archaeological evaluation of a medieval/modern feature boundary ditch (possibly medieval ditch) in the post-medieval/modern boundary ditch area (terrace ditch).	groundwork features. epi-historic medieval and 20th century features. archaeological features
Project dates	Start: 7-04-2018 End: 1-09-2018	
Previous/future work	Yes/No	
Associated project reference codes	18/05/06 Contracting ref. No.	
Associated project reference codes	DC/17/0617 Planning application No.	
Associated project reference codes	AS036 Emb.	
Type of project	Recording project	
Site status	None	
Current use	Cultivated/Other/Undertaken/terminated	
Monument type	DITCH Medieval	
Monument type	DITCH Medieval	
Significant finds	POTTER Medieval	
Significant finds	IRON NAILS Medieval	
Investigation type	"Watching Brief"	
Prompt	Planning condition	

Project location

Country	England	
Site location	SUFFOLK BERG ASSINGTON near of the street	
Postcode	CO15LJ	
Site coordinates	52.008882442268182759	0.528045

Project creators

Name of Organisation	Colchester Archaeological Trust
Project brief originator	HE Works Office SCC
Project design originator	Laura Booley
Project director/manager	Chris Ister
Project supervisor	Ben Holloway
Type of sponsor/funding body	Developer

Project archives

Physical archive recipient	Suffolk County Council Archaeology Service
Physical archive ID	AS036
Physical contents	"Ceramics", "Metal"
Digital archive recipient	Suffolk County Council Archaeology Service
Digital archive ID	AS036
Digital contents	"other"

Digital Media available "Images, digital photography", "Survey", "Text"
 Paper Archive recipient Suffolk County Council Archaeology Service
 Paper Archive ID ASD36
 Paper Contents "other"
 Digital Media available "Context sheet", "Miscellaneous material", "Photograph", "Plan", "Report", "Section"

Project bibliography

Publication type Grid literature (unpublished document/manuscript)
 Title Archaeological monitoring of the street at Assington, Suffolk, CO 15L April-September 2018
 Author(s)/Editor(s) Pooley, Jane
 Other bibliographic details CAT Report 1377
 Date 2019
 Issuer Colchester Archaeological Trust
 Place of publication Colchester
 Description A ring-bound loose leaf
 URL http://cat.essex.ac.uk/all-reports.html
 Entered by Laura Pooley (lp@catuk.org)
 Entered on 15 February 2019



Please email HistoricEngland@ASIS.org.uk for search advice
 ©DS996-2012 created by J.Gilham@Bitcham.com Last modified Wednesday 14 Feb 2012
 Cited by <http://www.oasis.ac.uk/form/print.cfm?id=34316> for this page

[Cookies](#) [Privacy policy](#)