

# Archaeological evaluation on land at Coopers, Castle Orchard, Bungay, Suffolk, NR35 1DD

January 2019



**by Dr Elliott Hicks**

figures by Chris Lister, Ben Holloway and Emma Holloway

fieldwork by Ben Holloway with Robin Mathieson

**commissioned by Paul Gajos (Lanpro Services Ltd)**

NGR: TM 33588 89661 (centre)

Planning ref: pre-application

CAT project ref.: 18/12n

Suffolk Parish Number: BUN 184

OASIS ref: colchest3-337574



**Colchester Archaeological Trust**

Roman Circus House,  
Roman Circus Walk,  
Colchester,  
Essex, CO2 7GZ

tel.: 01206 501785

email: [eh2@catuk.org](mailto:eh2@catuk.org)

**CAT Report 1380**

March 2019

## **Contents**

1	Summary	1
2	Introduction	1
3	Archaeological and landscape background	1
4	Aims	3
5	Methodology	3
6	Results	3
7	Finds	4
8	Conclusion	5
9	Acknowledgements	5
10	References	5
11	Abbreviations and glossary	6
12	Contents of archive	6
13	Archive deposition	6
	Appendix 1 Context List	8
	Figures	after p8
	OASIS summary sheet	

## **List of photographs and figures**

Cover: working shot

Photograph 1	T2 trench shot, looking north north-west	4
Fig 1	Site location	
Fig 2	Development site in relation to archaeological and historic sites recorded on the Suffolk Historic Environment Record	
Fig 3	Evaluation results	
Fig 4	Representative sections	

## 1 Summary

*An archaeological evaluation (two trial-trenches) was carried out at Coopers, Castle Orchard, Bungay, Suffolk in advance of the proposed construction of a new residential development. Two pits were uncovered which were modern in date. Household refuse and cinders/ashes present in these features suggest that they were used for domestic waste disposal purposes, in keeping with the location of the pits to the rear of the dwellings and businesses located along St Mary's Road. Although the absence of closely-datable finds precludes accurate dating of the pits it is likely that they date to the 19th century.*

## 2 Introduction (Fig 1)

This report presents the results of an archaeological evaluation at Coopers, Castle Orchard, Bungay, Suffolk which was carried out on 21st-22nd January 2019. The work was commissioned by Paul Gajos of Lanpro Services Ltd, in advance of the proposed construction of a new residential development and was undertaken by Colchester Archaeological Trust (CAT).

The Local Planning Authority (Waveney District Council) was advised by Suffolk County Council Archaeology Service (SCCAS) that this site lies in an area of high archaeological importance, and that, in order to establish the archaeological implications of the projected application, the prospective developer should commission a scheme of archaeological investigation in accordance with the *National Planning Policy Framework* (MHCLG 2018)

All archaeological work was carried out in accordance with a *Brief for a Trenched Archaeological* detailing the required archaeological work (SCCAS 2017a), and a Written Scheme of Investigation (WSI) prepared by Lanpro in response to the SCCAS brief and agreed with SCCAS (Lanpro 2018).

In addition to the brief and WSI, all fieldwork and reporting was done in accordance with English Heritage's *Management of Research Projects in the Historic Environment (MoRPHE)* (English Heritage 20085), and with *Standards for field archaeology in the East of England* (EAA 14 and 24). This report mirrors standards and practices contained in the Institute for Archaeologists' *Standard and guidance for archaeological evaluation* (CIfA 2017a) and *Standard and guidance for the collection, documentation, conservation and research of archaeological materials* (CIfA 2017b).

## 3 Archaeological and landscape background (Fig 2)

The following archaeological background draws on information from the Suffolk Historic Environment Record ([archaeology.her@suffolk.gov.uk](mailto:archaeology.her@suffolk.gov.uk)), SCC invoice number 9217488.

### Geology

The Geology of Britain viewer (1:50,000 scale<sup>1</sup>) shows the bedrock geology of the site as Crag Group (sand) with superficial deposits of river terrace deposits (sand and gravel).

### Historic landscape

Bungay is defined as *urban* surrounded by *rolling valley claylands, ancient plateau claylands, wooded valley meadowlands and fens and rolling valley farmlands and furze* in the Suffolk Landscape Character Assessment.<sup>2</sup> Within the Suffolk Historic Landscape Characterisation Map<sup>3</sup> it is defined as Landscape sub-type 10.2, built-up area – town. The landscape immediately around the built-up area is characterised as sub-type 2.5.

<sup>1</sup> British Geological Survey – <http://mapapps.bgs.ac.uk/geologyofbritain/home.html?>

<sup>2</sup> <http://www.suffolklandscape.org.uk/>

<sup>3</sup> The Suffolk Historic Landscape Characterisation Map, version 3, 2008, Suffolk County Council

18th-century and later enclosure – former marsh or fenland, sub-type 2.2. 18th-century and later enclosure – former common pasture, built margin, sub-type 1.1. pre-18th-century enclosure – random fields, sub-type 1.3. pre-18th-century enclosure – long co-axial fields, and sub-type 3.3. post-1950 agricultural landscape– boundary loss from long co-axial fields.

#### **Archaeology<sup>4</sup>** (Fig 2)

(All measurements are taken from the centre point of the development site to the centre point of the archaeological site). Due to the large number of results for the area the background is focused on results within a 500m radius of the site.

##### *Prehistoric*

Evidence of prehistoric activity is scarce within the search area, however a paleochannel and peat layer of the River Waveney may contain evidence of prehistoric activity (BUN 045, 332m N).

##### *Romano-British*

The only Roman evidence within the search area are a couple of coins found in 1826 during the sinking of a well in Earsham Street (BUN 130, 194m NNW).

##### *Anglo-Saxon*

Decorated stone present at Church of Holy Trinity is thought to be Anglo-Saxon in origin (BUN 020, 234m ENE).

##### *Late Anglo-Saxon to Medieval*

The site sits within the centre of a concentration of medieval historic assets. Of particular note is the church of St Mary. This was originally the site of a Saxon church recorded in the Domesday book, which was the site of a Benedictine Abbey during AD1160-1537, and subsequently the current church (BUN 006, 121m NE). Adjacent is the historic churchyard (BUN 122, 128m NE). Monitoring work at the church revealed burials and earlier phases of construction (BUN 101, 109m NE).

Bungay castle was an important fortification during the medieval period. The castle is a Norman motte and bailey, keep and earthworks. The castle was originally earthen with wooden palisades which were later replaced with stone (BUN004, 99m NNW). Earthworks have been recorded to the southeast at Castle Hills (BUN 012, 61m SW). If the earthwork bank line originally continued to the east, it is possible that the site once stood within the castle bailey. The town ditch has been found at several locations including at Quaves Lane (BUN 018, 115m SE), 10-12 Quaves Lane (BUN 025, 105m SSE) and 1 Lower Olland Street (BUN 092, 164m SE). Other defensive features have also been found at Keep Place (the old bus station) (BUN 040, 76m S), 25 Earsham Street (BUN 048, 364m SE). Remains of a medieval wall have been recorded at the rear of the Castle Inn (BUN 067, 161m NNW).

Other key structures include the Church of Holy Trinity (BUN 020, 234m E), the site of the former Chapel of Mary Magdalene (BUN 005, 479m SSE), evidence of the former gardens of Waveney House (BUN 046, 325m NW) and Cock Bridge (BUN 047, 250m NW). Medieval pits have been recorded at the old cinema site, Broad Street (BUN 054, 253m N) and pits and pig burials at Honeypot meadow (BUN 091, 364m SE). Pits, post-holes, a slot and a bread oven were recorded at Popson Street (BUN 016, 309m NNW).

##### *Post-medieval to modern*

Structures within the search zone originating from this period include Butter Cross, a circular Jacobean structure (BUN 013, 125m NNE), Falcon Bridge (BUN 032, 384m NE), the site of the former railway station (BUN 053, 567m NW) and the site of the former gasworks in Rose Lane (BUN 059, 183m SSE). Archaeological work has

---

<sup>4</sup> This is based on records held at the Suffolk County Historic Environment Record (SCHER).

revealed a section of the inner bailey wall seen at the New Visitor Centre, Bungay Castle (BUN 044, 044m N), a burnt pit at Trinity Street (BUN 052, 183m NNE), a lime kiln at Lower Olland Street (BUN 060, 325m SE) and an earthwork causeway has been identified from aerial photographs (BUN 083, 530m S). Of most significance are post-medieval box drains recorded during monitoring work at the Old Bowtells Street, 14 St Marys Street (BUN 059, 183m NE), as this site lies on a property adjacent to the current site.

#### *Late Anglo-Saxon to medieval finds:*

There are a number of finds spots within the search area. These include pottery with some animal bone on land north of Falcon Bridge (BUN 011, 377m NE), 37a Upper Olland Street (BUN 023 and BUN 149, 342m SE), a site on Broad Street/Nethergate Street (BUN 031, NNW), 8 Nethergate Street (BUN 106, 232m N), 15 Trinity Street (BUN165, NE) and 25 Trinity Street (BUN 119, 250m NE). A crude stone carving was found at Cowslip House, 15 Scales Street (BUN 145, 269m NNW).

#### *Undated*

An undated feature, probably a ditch was recorded at St Edmund's RC Primary School, St Mary Street (BUN 057, 148m ESE).

#### **Listed buildings<sup>5</sup>** (Fig 2)

Located in the heart of the medieval town of Bungay (BUN 028), the site is surrounded by approximately 166 listed buildings within a 500m radius (4 Grade I, 3 Grade II\* and 159 Grade II). They date from the medieval period through to the 19th century.

## **4 Aims**

The aims of the evaluation were to:

- excavate and record any archaeological deposits that were identified within the development site.
- identify the date, approximate form and purpose of any archaeological deposit within the application area, together with its likely extent, localised depth and quality of preservation.
- evaluate the likely impact of past land uses, and the possible presence of masking colluvial/alluvial deposits.
- establish the potential for the survival of environmental evidence.

## **5 Methodology**

Two trial-trenches were laid out across the development site. The first trench was 10m long by 1.8m wide, the second was 6m long by 1.8m wide (totalling 28.8m<sup>2</sup>).

The trenches were mechanically excavated under archaeological supervision. All archaeological horizons were excavated and recorded according to the WSI. A metal detector was used to check trenches, spoil heaps and excavated strata.

## **6 Results** (Appendix 1, Figs 3-8)

### **Trench 1 (T1): 10m long by 1.8m wide**

T1 was excavated through a modern yard surface (L1, 0.15-0.16m thick, tarmac surface with brick crush and hoggin sub-base), a modern layer of imported fill (L2, c 0.58-0.6m thick, friable, moist medium yellow sand) and an accumulation deposit (L3, c 0.16-0.19m thick, firm, moist medium grey/brown sand with charcoal flecks) onto

<sup>5</sup> This is based on records held at the Suffolk County Historic Environment Record (SCHER).

natural (L4, firm, moist medium yellow/orange sand, encountered at a depth of c 0.89-0.94 below current ground level [bcgl]).

No archaeological remains were identified in T1.

**Trench 2 (T2): 6m long by 1.8m wide**

T2 was excavated through L1 (0.09-0.1m thick), an undated levelling deposit (L5, c 0.1-0.11m thick, firm, moist medium grey clay), L3 (0.15-0.34m thick) onto L4 (encountered at a depth of 0.52-0.67m bcgl).

Pit F1 was modern in date, was cut into accumulation deposit L3 and was sealed by levelling deposit L5. The feature extended beyond the limit of excavation (LOE) but its exposed extent was 0.81m wide and 0.21m deep. Several tip-lines, including those of ash/cinder deposits, were evident within the feature. It also contained fragments of peg-tile and brick.

Pit F2 was also modern in date, was cut into both L3 and L4 and was sealed by L5. It too extended beyond the LOE but its exposed extent was 2.18m wide and 0.46m deep, and like F1, contained lenses of silty-sand and ash/cinders, along with fragments of peg-tile and animal bone.



**Photograph 1** T2 trench shot, looking north north-west

**7 Finds**

Small fragments of post-medieval brick and abraded undiagnostic fragments of peg-tile, together with some small pieces of animal bone, were recovered from both F1 and F2. Unfortunately these finds have been misplaced and it is not possible to comment further on them.

## 8 Conclusion

Two pits were uncovered during the course of this evaluation. Both were modern in date, and contained ash/cinder deposits as well as small quantities of post-medieval brick, peg-tile and animal bone fragments. The absence of any closely-datable finds from these features precludes more accurate dating. The presence of the peg-tile *could* indicate a medieval or post-medieval date for these two features, as peg-tile was first used in Britain around 1200 and more commonly utilised in the post-medieval and modern periods. It is far more likely, however, that these fragments of peg-tile are residual from other contexts, particularly as the ash/cinder deposits identified in both features probably derive from coal-fired hearths, indicating a likely 19th-century date as coal was not commonly used until after the Industrial Revolution. Early Ordnance Survey mapping shows the area as undeveloped land to the rear of a number of properties fronting onto St Mary's Street. It is likely that the pits were utilised for domestic waste disposal associated with these properties.

The pits identified in T1 suggest that disposal of domestic waste in the 19th century may have had a negative impact on any archaeological remains on the site although no evidence for archaeological remains dating to earlier periods was identified during the trenching. This may be the case in the northern part of the site but the lack of any archaeology (particularly medieval archaeology) in T2 suggests that the site is just far enough from the central focus of the town to have remained undeveloped, and weighs against the notion that this area might previously have stood within the castle bailey.

The evaluation did not identify any colluvial or alluvial deposits. As during other archaeological investigations carried out in the vicinity, however, an accumulation layer was encountered.

## 9 Acknowledgements

CAT is grateful to Paul Gajos of Lanpro Services for commissioning and funding the project. The project was managed by C Lister, fieldwork was carried out by B Holloway with R Mathieson. Figures are by C Lister, B Holloway and E Holloway. The project was monitored by Dr Abby Antrobus for Suffolk County Council Archaeological Services.

## 10 References

Note: all CAT reports, except for DBAs, are available online in .pdf format at <http://cat.essex.ac.uk>

- |                           |       |   |
|---------------------------|-------|---|
| British Geological Survey | 2017  | British Geological Survey website, <a href="http://www.bgs.ac.uk/data/mapViewers/home.html">www.bgs.ac.uk/data/mapViewers/home.html</a> , accessed 1 September 2017 |
| CIfA                      | 2014a | <i>Standard and guidance for archaeological field evaluation</i>  |
| CIfA                      | 2014c | <i>Standard and guidance for the collection, documentation, conservation and research of archaeological</i>   |
| CIfA                      | 2014d | <i>Code of Conduct</i>  |
| Glazebrook, J             | 1997  | <i>Research and Archaeology: A Framework for the Eastern Counties: 1. Resource Assessment</i>   |
| Glazebrook, J             | 2000  | <i>Research and Archaeology: A Framework for the Eastern Counties: 2. Research Agenda and Strategy</i>  |
| Gurney, D                 | 2003  | <i>Standards for Field Archaeology in the East of England</i> . East Anglian Archaeology Occasional Papers 14 ( <b>EAA 14</b> )                                     |
| Historic England          | 2015  | <i>Management of Research Projects in the Historic Environment</i>  |
| Lanpro                    | 2018  | <i>Written Scheme of Investigation for Archaeological Evaluation Trenching, Land at Coopers, Bungay, Suffolk</i>  |
| McComish, JM              | 2015  | <i>A Guide to Ceramic Building Material: An Insight Report</i>  |
| Medlycott, M              | 2011  | <i>Research and Archaeology Revisited: a revised framework for the East of England</i> . East Anglian Archaeology Occasional Papers 24 ( <b>EAA 24</b> )            |
| SCCAS                     | 2017a | <i>Requirements for a Trenched Archaeological Evaluation</i>  |
| SSCAS                     | 2017b | <i>Archaeological Archives in Suffolk: Guidelines for Preparation and</i>   |

SSCAS                      2008                      *Deposition*  
*The Suffolk Historic Landscape Characterisation Map, version 3*

## 11 Abbreviations and glossary

Anglo-Saxon	period from c 500 – 1066
CAT	Colchester Archaeological Trust
CIfA	Chartered Institute for Archaeologists
cinder	a partially or mostly burned piece of coal
context	specific location of finds on an archaeological site
feature (F)	an identifiable thing like a pit, a wall, a drain, can contain 'contexts'
layer (L)	distinct or distinguishable deposit (layer) of material
medieval	period from AD 1066 to c AD 1500
modern	period from c AD 1800 to the present
natural	geological deposit undisturbed by human activity
NGR	National Grid Reference
OASIS	<b>O</b> nline <b>A</b> ccess to the <b>I</b> ndex of Archaeological <b>I</b> nvestigations, <a href="http://oasis.ac.uk/pages/wiki/Main">http://oasis.ac.uk/pages/wiki/Main</a>
peg-tile	rectangular thin tile with peg-hole(s) used mainly for roofing, first appeared c AD1200 and continued in use to present day, but commonly post-medieval to modern
post-medieval	from c AD 1500 to c 1800
prehistoric	pre-Roman
Roman	the period from AD 43 to c AD 410
SCC	Suffolk County Council
SCCAS	Suffolk County Council Archaeological Services
SCHER	Suffolk County Historic Environment Record
section	(abbreviation sx or Sx) vertical slice through feature/s or layer/s
WSI	Written Scheme of Investigation

## 12 Contents of archive

**Finds:** n/a

### **Paper and digital record**

One A4 document wallet containing:

The report (CAT Report 1380)

SCCAS evaluation brief, CAT written scheme of investigation

Original site record (feature and layer sheets, trench record sheet, finds record)

Site digital photographic log

## 13 Archive deposition

The paper archive and finds are currently held by CAT at Roman Circus House, Roman Circus Walk, Colchester, Essex, but will be permanently deposited with SCCAS under Parish Number BUN 184.



**Distribution list:**

Paul Gajos, Lanpro Services  
Dr Abby Antrobus, SCCAS  
Suffolk County Historic Environment Record



**Colchester Archaeological Trust**

Roman Circus House,  
Roman Circus Walk,  
Colchester,  
Essex, CO2 7GZ

tel.: 01206 501785

email: [eh2@catuk.org](mailto:eh2@catuk.org)

checked by: Philip Crummy  
date: 11.03.2019

**Appendix 1 Context list**

<b>Context Number</b>	<b>Trench Number</b>	<b>Feature / layer type</b>	<b>Description</b>	<b>Date</b>
L1	T1, T2	Hardtop	Tarmac surface and associated sub-base (brick crush and hoggin)	Modern
L2	T1	Imported fill	Friable, moist medium yellow sand	Modern
L3	T1	Accumulation deposit	Firm, moist medium grey/brown sand with charcoal flecks	Undated (?post-medieval)
L4	T1, T2	Natural	Firm, moist medium yellow/orange sand	Post-glacial
L5	T2	Levelling deposit	Firm, moist medium grey clay	Modern
F1	T2	Pit	Firm, moist medium grey/brown sand	Modern
F2	T2	Pit	Firm, moist medium/dark grey/brown sandy-silt with charcoal flecks	Modern

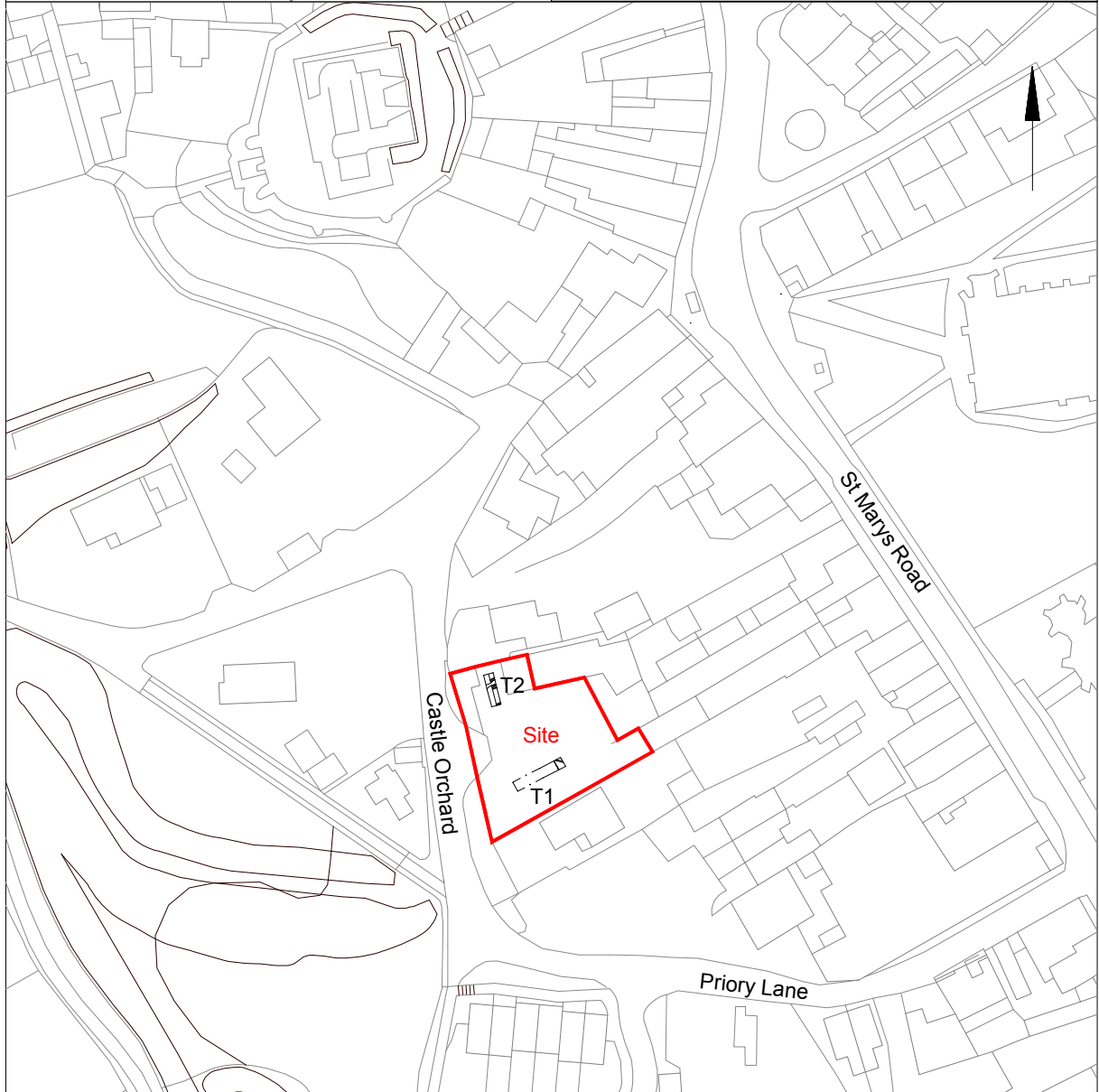
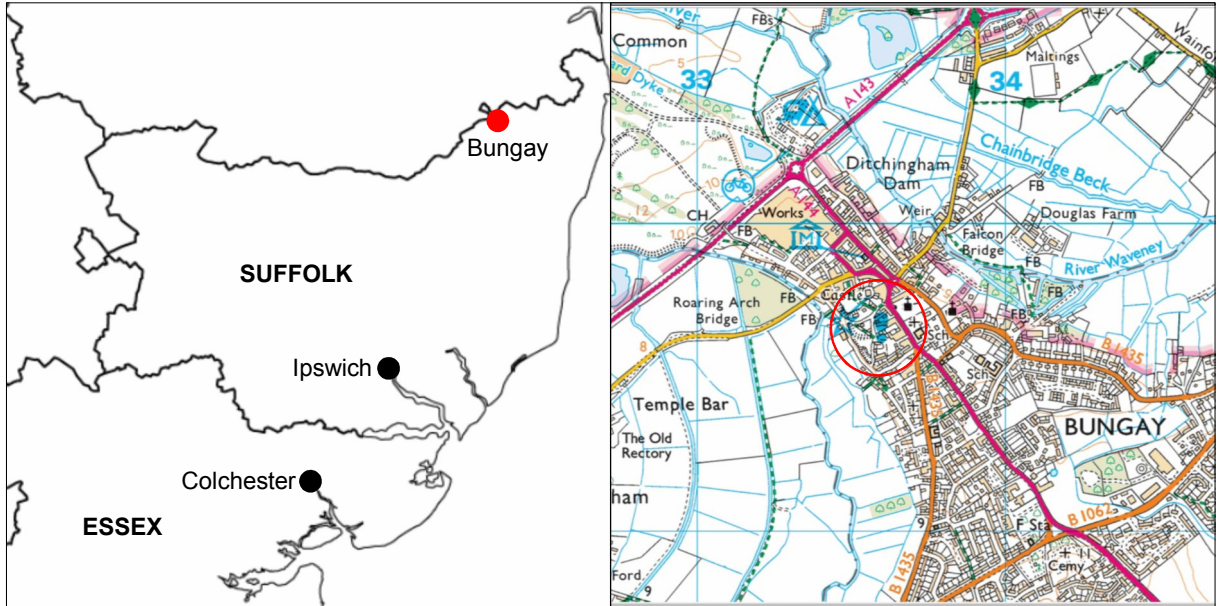


Fig 1 Site Location.

© Crown copyright. All rights reserved. Licence number 100039294.

0 50 m

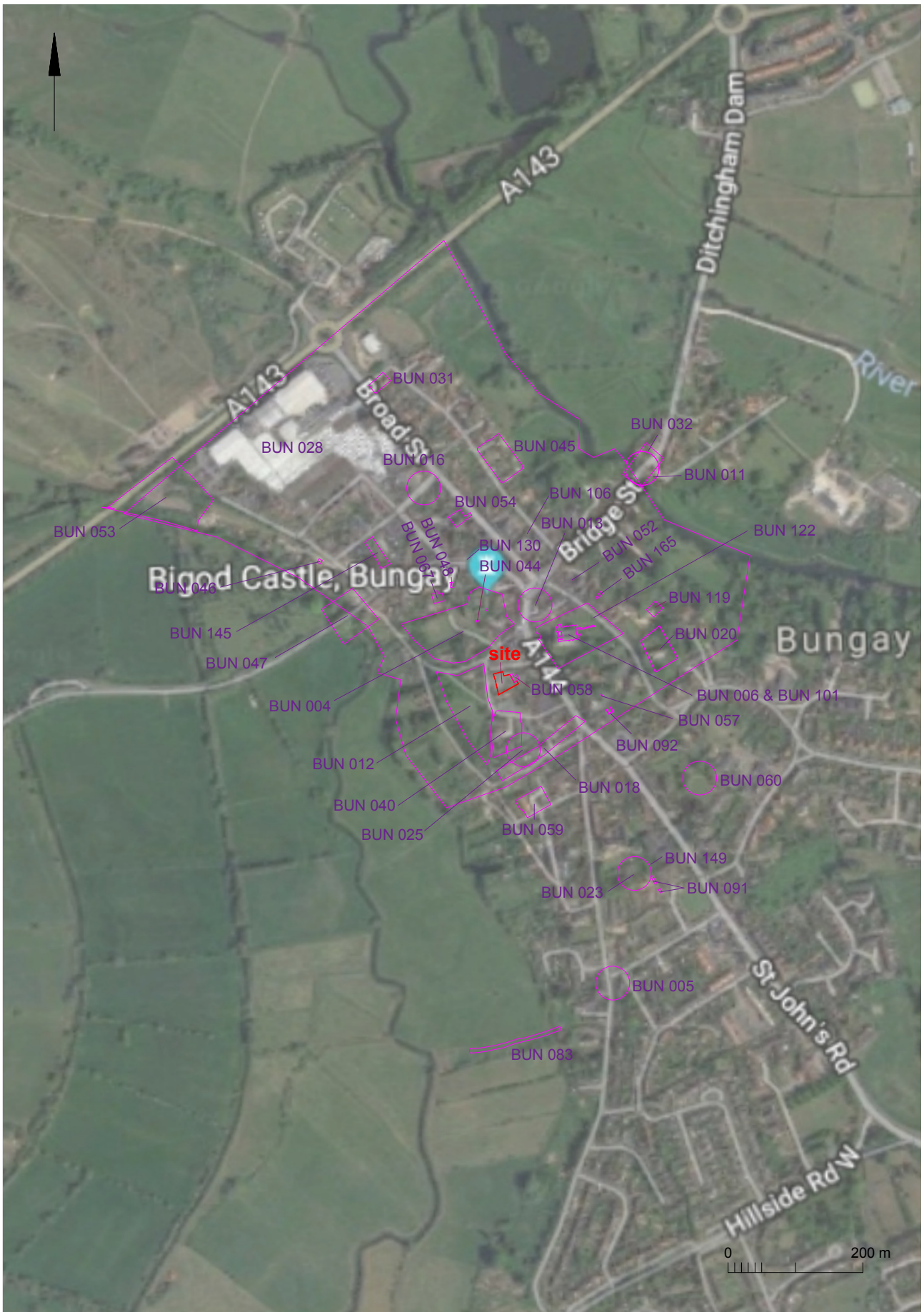
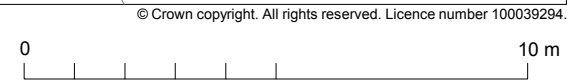


Fig 2 Development site (in red) shown in relation to archaeological and historic sites recorded on the Suffolk Historic Environment Record.

Imagery ©2019 Google, map data ©2019 Google  
HER data © Suffolk Historic



Fig 3 Evaluation results.



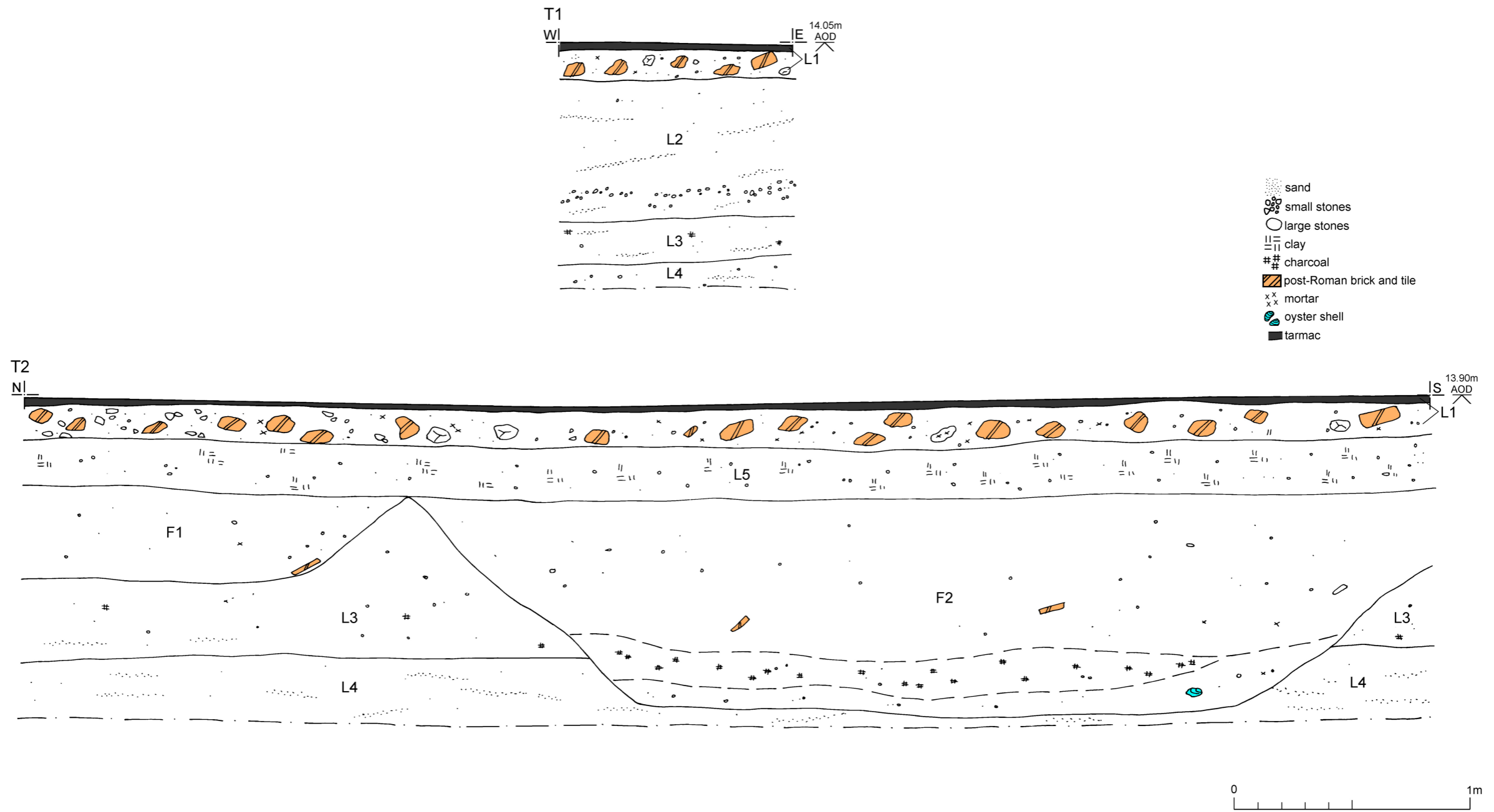


Fig 4 Representative sections.

# OASIS DATA COLLECTION FORM: England

[List of Projects](#) | [Manage Projects](#) | [Search Projects](#) | [New project](#) | [Change your details](#) | [HER coverage](#) | [Change country](#) | [Log out](#)

## Printable version

**OASIS ID: colchest3-337574**

### Project details

Project name	Land at Coopers Castle Orchard Bungay Suffolk NR35 1DD
Short description of the project	An archaeological evaluation (two trial-trenches) was carried out at Coopers, Castle Orchard, Bungay, Suffolk in advance of the proposed construction of a new residential development. Two pits were uncovered which were modern in date. Household refuse and cinders/ashes present in these features suggest that they were used for domestic waste disposal purposes, in keeping with the location of the pits to the rear of the dwellings and businesses located along St Mary's Road. Although the absence of closely-datable finds precludes accurate dating of the pits it is likely that they date to the 19th century.
Project dates	Start: 21-01-2019 End: 22-01-2019
Previous/future work	Not known / Not known
Any associated project reference codes	18/12n - Contracting Unit No.
Any associated project reference codes	BUN 184 - HER event no.
Any associated project reference codes	colchest3-337574 - OASIS form ID
Type of project	Field evaluation
Site status	None
Current Land use	Other 2 - In use as a building
Monument type	PIT Modern
Monument type	PIT Modern
Significant Finds	NONE None
Methods & techniques	""Sample Trenches""
Development type	Urban residential (e.g. flats, houses, etc.)
Prompt	Planning condition
Position in the planning process	Not known / Not recorded

### Project location

Country	England
Site location	SUFFOLK WAVENEY BUNGAY Coopers Castle Orchard
Postcode	NR35 1DD
Study area	0.06 Hectares
Site coordinates	TM 33588 89661 52.454319891337 1.438350506717 52 27 15 N 001 26 18 E Point
Height OD / Depth	Min: 12.53m Max: 13.16m

### Project creators

Name of Organisation	Colchester Archaeological Trust
Project brief originator	HEM Team Officer, SCC
Project design originator	LANPRO
Project director/manager	Chris Lister

Project supervisor Ben Holloway  
 Type of sponsor/funding body Developer

### Project archives

Physical Archive Exists? No  
 Digital Archive recipient Suffolk County Council Archaeology Service  
 Digital Archive ID BUN 184  
 Digital Media available "Images raster / digital photography", "Survey"  
 Paper Archive recipient Suffolk County Council Archaeology Service  
 Paper Archive ID BUN 184  
 Paper Media available "Context sheet", "Drawing", "Photograph", "Report"

### Project bibliography 1

Publication type Grey literature (unpublished document/manuscript)  
 Title Arcaheological evaluation on land at Coopers, Castle Orchard, Bungay, Suffolk, NR35 1DD: January 2019  
 Author(s)/Editor(s) Hicks, E.  
 Other bibliographic details CAT Report 1380  
 Date 2019  
 Issuer or publisher Colchester Archaeological Trust  
 Place of issue or publication Colchester  
 Description A4 loose-leaf ring-bound  
 URL <http://cat.essex.ac.uk>  
 Entered by Chris Lister (cl@catuk.org)  
 Entered on 20 March 2019

**OASIS:**

Please e-mail [Historic England](#) for OASIS help and advice  
 © ADS 1996-2012 Created by [Jo Gilham](#) and [Jen Mitcham](#), email Last modified Wednesday 9 May 2012  
 Cite only: <http://www.oasis.ac.uk/form/print.cfm> for this page

[Cookies](#) [Privacy Policy](#)