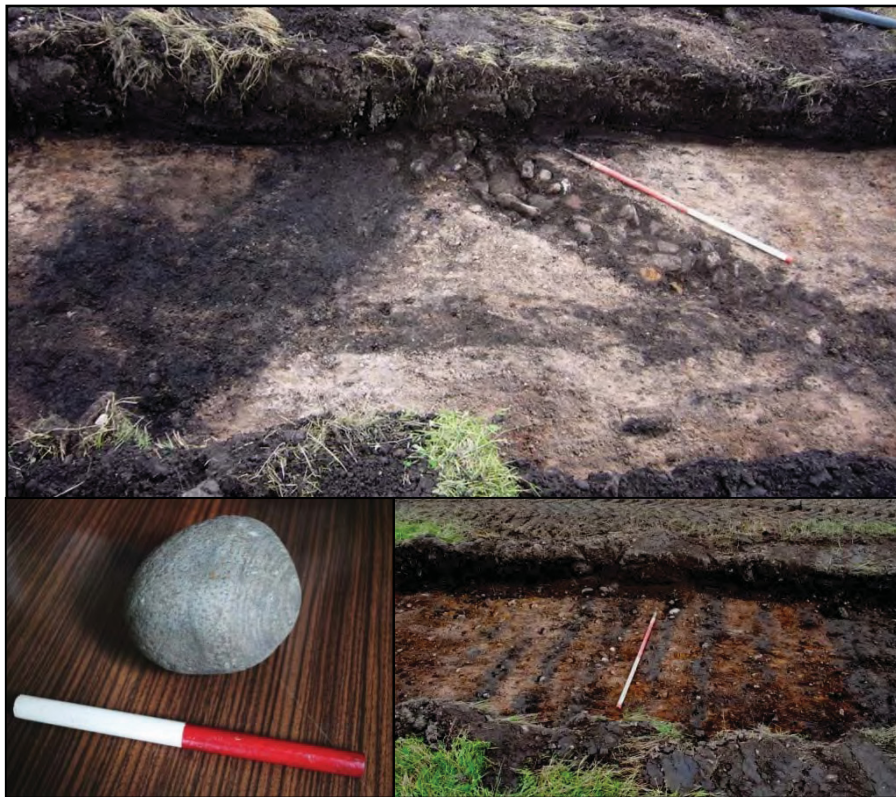




Highland Archaeology Services Ltd
Bringing the Past and Future Together

Tain Jubilee Drive Tain, Ross-shire



Desk-based Assessment and Trial Trenching Evaluation

7 Duke Street Cromarty Ross-shire IV11 8YH

Tel / Fax: 01381 600491 Mobile: 07834 693378 Email: info@hi-arch.co.uk Web: www.hi-arch.co.uk

Registered in Scotland no. 262144 Registered Office: 10 Knockbreck Street, Tain, Ross-shire IV19 1BJ VAT No. GB 838 7358 80
Independently Accredited for Health and Safety, Environment and Quality Control by UVDB Verify



Tain Jubilee Drive Tain, Ross-shire

Desk-based Assessment and Trial Trenching Evaluation

Report No.	HAS100802
Project Code	HAS-TJD10
Client	Tulloch Homes
Planning Ref	08/105/REMSU
NGR	NH 7709 8149
OASIS	rosscrom1-81764
Date/ revision	24/08/2010
Author	Mary Peteranna

Summary

An archaeological trial trenching evaluation was undertaken from 26-29 July 2010 at the site of a proposed housing development on Jubilee Drive, Tain. Development work was already in progress by the time the trial trenching was requested. This resulted in approximately one half of the site being evaluated for the presence of archaeological remains. The archaeological features uncovered attested to a long history of farming of the site: numerous field drains and plough marks were uncovered in addition to five scattered finds and one ditch of unknown use.

Contents

1	Aims and objectives	4
2	Acknowledgements	4
3	Site Location.....	4
4	Introduction	6
5	Planning Background	6
6	Historical and Archaeological Background.....	6
7	Methodology.....	7
8	Results	9
7	Discussion.....	24
8	Conclusions and Recommendations	28
9	Archive Location	29
10	References	29
APPENDIX 1: Trenches.....		30
APPENDIX 2: Features.....		33
APPENDIX 3: Contexts		40
APPENDIX 4: Drawings.....		50
APPENDIX 5: Finds		51
APPENDIX 6: Photographs		52
APPENDIX 7: Section Drawings.....		59

Illustrations

Figure 1	Site location.....	5
Figure 2	Trench plan as proposed.....	8
Figure 3	Roy's map showing the rig and furrow cultivation to the west of Tain.....	10
Figure 4	Site plan showing trenches and extent of <i>in progress</i> development.....	10
Figure 5	Plan of Trench 1	12
Figure 6	Plan of Trench 2 (scale in metres).....	13
Figure 7	Plan showing Trench 3, Trench 6 and Trench 7 (scale in metres).....	14
Figure 8	Plan of Trench 4 (scale in metres).....	15
Figure 9	Plan of Trench 5 (scale in metres).....	17
Figure 10	Plan of Trench 8 (scale in metres)	19
Figure 12	Plan showing Trench 9, Trench 10 and Trench 11 (scale in metres).....	20
Figure 13	Plan showing Trench 12 and Trench 13 (scale in metres).....	22
Figure 14	Plan of Trench 14 (scale in metres)	23
Figure 15	Plan of Trench 15 (scale in metres).....	23
Plate 1	Type 1 field drain [4-03] to left, Type 2 field drain [4-02] to right	25
Plate 2	Type 1 plough mark [8-01]	26
Plate 3	Type 2 plough-marks [12-01]	27
Plate 4	Feature [6-05], ditch of unknown use	28

1 Aims and objectives

- To minimise any possible delay or cost to the development by anticipating archaeological requirements as far as possible, timetabling and integrating archaeological recording work with the project, and dealing with any issues arising quickly and efficiently.
- To determine as far as possible the character, extent, condition, date and significance of any archaeologically significant remains; and to preserve these where possible and record where necessary in line with national and local policies and standards.
- To ensure that any artefacts or human remains are dealt with in accordance with legal requirements and current Historic Scotland policy guidance.

2 Acknowledgements

Fieldwork was carried out by Mary Peteranna and Lynn Fraser. We wish to thank Tony Miller of Tulloch Homes, Stephen Shaw of O'Brien Homes and Cara Jones of Highland Council Archaeology Unit for their assistance. All mapping, unless otherwise stated, is reproduced by permission of Landmark Information Group under Licence 100043217. Historic maps are courtesy of National Library of Scotland.

3 Site Location

Tain is located on a plateau aligned almost parallel to the Dornoch Firth on a raised beach at approximately 30m above sea level, rising in terraces to 70m above sea level at the location of the proposed development site. The town occupies the shallower side of the Firth. The River Tain, which runs alongside the town and empties into the firth, has changed its path over time and there is uncertainty as to the exact original location of Tain with respect to the river¹. The underlying bedrock in the area is the Old Red Sandstone.

The development site, centred on NGR NH 771 815, is located on Jubilee Drive on the outskirts of Tain on the west side of the A9 by-pass. The site comprises of a flat, grassy field bordered from the northwest to the south by recent housing developments and from southwest to northwest by farmland associated with St Vincent farmstead used for horse-riding facilities. The most recent use of the site appeared to have been agricultural.

¹ Oram *et al* 2009, 7

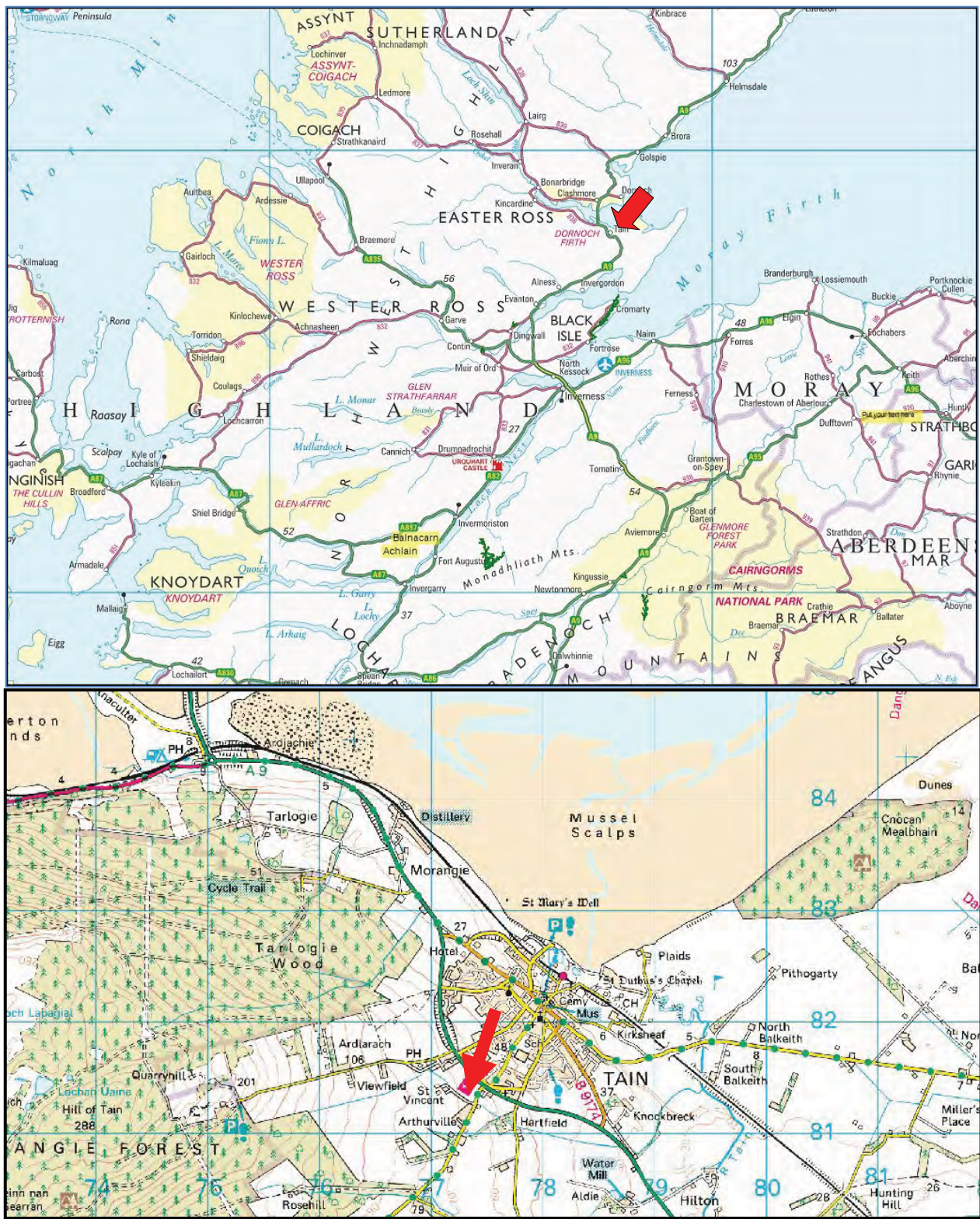


Figure 1 Site location

4 Introduction

4.1 General

This report presents the results of an archaeological trial trenching evaluation undertaken from 26-29 July 2010 on behalf of Tulloch Homes at a housing development site on Jubilee Drive, located west of the A9 road in Tain in Ross-shire, centred on NGR NH 7711 8149 (Figure 1).

The proposed trench plan produced in the Written Scheme of Investigation (WSI)² prior to the evaluation could not be followed in this case because of the advanced state of building works on the site.

4.2 Objectives

The purpose of the trial trenching evaluation is to identify and record any features or finds of archaeological interest in order to assess the nature and extent of the archaeological potential of a site prior to development, whilst minimizing any delays or disruptions to the project. The aim is to evaluate the likely impact of the development on any identified archaeological remains to aid the local planning authority's decision-making process.

5 Planning Background

The planning and policy framework includes the Highland Council's *Structure Plan*³, and the Scottish Government's *Scottish Planning Policy SPP 23: Planning and the Historic Environment* (2008)⁴. This makes it clear that the cultural heritage is a material consideration in deciding planning applications, and may be the subject of conditions. The method of assessing historic sites and features based on the concept of cultural significance, and the fundamental principles underpinning the above policies are set out in *Passed to the Future: Historic Scotland's Policy for the Sustainable Management of the Historic Environment* (2002)⁵ and the *Burra Charter* (Australia ICOMOS 1999).⁶

The construction of new housing on Jubilee Drive in Tain has the potential to impact on buried features of historic and archaeological importance. An archaeological trial trenching of the site was requested by Highland Council Planning Department (planning reference 08/00105/REMSU) to determine its archaeological baseline.

6 Historical and Archaeological Background

Although there is very little recorded archaeology in Tain, the surrounding region has an extensive amount of prehistoric sites, such as roundhouses, cairns, field systems and scattered findspots.

The early historic period (from 550 CE) in Ross-shire was characterised by Pictish inhabitants and traditions, which by the late 8th century were mostly absorbed during the conversion to Christianity. At the same time,

² Highland Archaeology Services Report No. HAS100704.

³ <http://www.highland.gov.uk/yourenvironment/planning/developmentplans/structureplan/thehighlandstructureplan.htm>

⁴ <http://www.scotland.gov.uk/Publications/2008/10/28135841/0>

⁵ www.historic-scotland.gov.uk/pasttofuture.pdf

⁶ <http://www.icomos.org/australia/burra.html>

the Norse influence was growing in Northern Scotland. This unsettled period of power struggles between the Norse and the local clans eased by the 11th century when the Crown began to assert its influence⁷.

Tain was originally an *Immunity*, a neutral meeting place of the clans. The town was seen as a sanctuary, particularly on the site of the chapel of St Duthus by the 13th century. In fact, in the 14th century, Robert the Bruce and his family sought sanctuary at the chapel⁸.

There is no clear evidence for the founding of the burgh of Tain in the 12th century because the establishment of Tain as a burgh took a rather unusual route. Due to the town's religious importance and growth over time associated with the cult of St. Duthus, Tain had gradually acquired rights and privileges of a burgh without the actual written charter. It was not until the late 16th century that James III granted final confirmation of *royal burgh* status⁹.

After the Earl of Ross endowed the church to Tain in the early 14th century, the town developed a sizeable ecclesiastical presence. Tain had risen to regional importance as a popular pilgrimage destination to the site of St. Duthus' (St. Duthac's) birth and death. His remains, which were said to have curative powers, were supposedly located here. Tain was often known as *Baile-Dhuthaich*, or Duthac's town¹⁰.

James IV made regular annual pilgrimages to Tain beginning in 1493 and there would have been significant pomp alongside him. However, after the death of James V and the Reformation parliament, the chapel of St. Duthac and the collegiate church were closed down after pilgrimages and veneration of relics were forbidden¹¹.

Medieval Tain would have had houses/manses for the priests and clergy, town-houses for local landowners, inns and workers' homes. There was no known town wall or man-made boundaries, but there was the concept of the *Immunity* boundary¹².

The post-Reformation era was the start of economic decline of Tain, although Tain did retain a certain amount of importance as an administrative capital for Ross-shire, from its establishment as the seat of the Ross sheriffdom¹³. The 17th-18th centuries witnessed the end of seaborne trade with Tain beginning at the time that Dornoch was granted royal burgh status. The 18th century saw significant amount of emigration from the Highlands to North America, although Tain did retain in its population a sizeable presence of craftsman, including silversmiths, shoemakers, etc¹⁴.

The proposed development site at Jubilee Drive is located approximately one kilometre west-southwest of the historic core of Tain.

7 Methodology

7.1 General

Work was conducted in accordance with the Institute for Archaeologists' (IfA) *Standard and Guidance for an Archaeological Evaluation and Code of Conduct*¹⁵.

⁷ Oram *et al* 2009, 14-18.

⁸ HHER #MHG8582.

⁹ Oram *et al* 2009, 21-23.

¹⁰ Oram *et al* 2009, 10.

¹¹ Oram *et al* 2009, 31-36.

¹² Oram *et al* 2009, 1-2.

¹³ Oram *et al* 2009, 40-48.

¹⁴ Oram *et al* 2009, 55-61.

¹⁵ *Institute for Archaeologists (IfA)*.

7.2 Desk-based assessment

A desk-based assessment was conducted prior to commencement of the evaluation in order to assess the archaeological potential of the area based on previously recorded sites and any historical documentation.

The site plan of the area, as supplied by the client, were checked in detail against the Ordnance Survey 1:25000 Map, the Highland Council's Historic Environment Record (HHER), the National Monuments Record of Scotland (NMRS), the Highland Council Archives and Historic Scotland's records of scheduled monuments and listed buildings. Online aerial photographs were checked and the map collections of the National Library of Scotland (NLS) were studied. Other literary sources were also consulted.

7.3 Trial Trenching Evaluation

A site area of 527m² (3.6%) was evaluated by fifteen mechanically-excavated linear trenches. Topsoil and modern deposits were removed with a smooth-bladed ditching bucket to reveal the subsoil surface. This work was conducted under constant archaeological supervision.

Due to the fact that approximately one-third of the site was under development and approximately one-fourth of the site was covered by spoil mounds upon commencement of the evaluation, the evaluation covered less than the Highland Council requirement of 5%. This was reported to and accepted by the Highland Council Archaeology Unit (HCAU) who recommended a revision to the proposed trench plan (see figures 2 and 4)¹⁶.



Figure 2 Trench plan as proposed

¹⁶ Jones, C., HCAU. Pers comm 26-7-10.

The northern third of the site had already been excavated and house foundations and access roads were already constructed. Therefore the trenches, which covered the remaining south side of the site, were placed around the site compound and large spoil mounds already constructed in the centre of the site. The desk-based assessment and aerial photographs had not revealed any potential features to be targeted.

All on-site recording of features was carried out using digital photography and completion of written records and plan drawings. Trench and feature locations were plotted using DGPS technology and ArcPad GIS software on a handheld Windows Mobile-based computer. Each feature of archaeological interest was excavated in section and recorded, after which trenches were backfilled upon completion of excavation. The resulting plan was adjusted post-fieldwork to the Ordnance Survey mapping.

8 Results

8.1 Desk-based Assessment

Historical cartography was consulted online at *National Library of Scotland*. Although the earliest maps do not show the site location, Timothy Pont's Map of *Tane*¹⁷ depicts two mills located west of the town. Joan Blaeu's map does not provide any further description of *Tayne* other than showing the town and castle¹⁸. John Thomson's Atlas of Scotland 1832¹⁹ also does not depict the development site in sufficient detail to note particular features, although it does show the area as open land at the base of hills. It also depicts two mills, situated further to the southwest of the site, which probably relate to the two depicted on Pont's map. On William Roy's Military Survey of Scotland (1747-1755)²⁰, rig and furrow cultivation is annotated to the west side of *Tayn*, which is likely to cover the location of the development site (Figure 2). The 1st and 2nd edition Ordnance Survey maps show the site as open, cultivated land²¹. The 2nd edition OS map also depicts the neighbouring farmstead of St Vincent, which is not on the 1st ed. OS, to the southwest and a stream forming the western site boundary.

Online aerial photographs of the site accessed from *Google Earth* did not show any visible features on the ground.

The Highland Historic Environment Record (HHER) and RCAHMS do not hold any records of sites or find-spots within the development site nor are any Scheduled Ancient Monuments located within the area.

The following **HHER²² records** relate to sites or events in fairly close proximity to the study area:

EHG2795	Archaeological evaluation	NH 77214 82546
Trial trenching evaluation (2008) ahead of development, which uncovered 19 th -20 th c. field drains and plough-marks		
EHG2988	Archaeological evaluation	NH 77285 81410
Trial trenching evaluation (2009) ahead of development, which uncovered 19 th -20 th c. field drains and plough-marks		
MHG8680	Find spot	NH 7730 8110
Neolithic polished axe head found in Arthurville		

¹⁷ Pont, Timothy. *Tarbat Ness, Easter Ross*. National Library of Scotland (NLS), <http://www.nls.uk>.

¹⁸ Blaeu Atlas of Scotland, 1654, NLS online.

¹⁹ NLS.

²⁰ NLS

²¹ NLS

²² HHER



Figure 3 Roy's map showing the rig and furrow cultivation to the west of Tain²³



Figure 4 Site plan showing trenches and extent of *in progress* development

²³ Courtesy of NLS online historic map collection

8.2 Archaeological potential

The two previous trial trenching evaluations of neighbouring tracts of land had shown that this site would undoubtedly contain 19th-20th century field drains and plough marks. However, Roy's map (Figure 3 above) suggests earlier cultivation on the site. The site itself, situated on flat terrain on the 70-metre contour above the Dornoch Firth, could have potential for prehistoric settlement although due to its lengthy past cultivation it was uncertain whether archaeological remains would be *in situ*.

8.3 Trial trenching

Weather conditions:

26-27 July 2010	Mostly cloudy and windy with isolated rain showers
28 July 2010	Cloudy with heavy rain showers
29 July 2010	Partly cloudy with dry conditions

Fifteen trenches totalling 527m² (approximately 3.6% of the site) were excavated within the development area. (Figure 4) Topsoil across the site was a dark-mid brown soil with 5% small-medium cobbles. The



subsoil transitioned many times, comprised of white-grey sand, pale-dark orange-brown sandy gravel with small cobbles and some clay deposits scattered across the site. There was also the appearance of iron panning which had darkened the subsoil in places.

Each trench was 1.8m in width, and varied in length from 13-30m. Trench depth ranged from 0.3 to 0.6m. The topsoil from Trench 6 and Trench 7 had been previously dug and laid with compact gravel and so the trench depth below the surface was unknown. Halfway through the digging of Trench 14, the trench was shifted to the east to avoid the water main trench. Full details of each individual trial trench are listed in Appendix 1. The site plan in Figure 2 shows trench locations and indicates the area of the site already under development. An index of photographs is given in Appendix 6.

Forty-one features were identified and recorded, revealing extensive agricultural remains, including plough-marks, ard-marks and field drains. In many cases, features between trenches were found to be the same and this is annotated on the Index of Features (Appendix 2). Only one feature of unknown use was recorded in Trench 6 and could well have been agricultural in function. Five small finds of archaeological interest (Appendix 5) were recovered, although all within re-deposited contexts.

Plate 1 Trench 1 – view ENE. Metre scale

Trench 1

Trench 1 was located in the southwest corner of the site. Five features were identified (Figure 5), three of which were of archaeological significance. Feature 1-01, a 0.20m-wide field drain trench containing clay ceramic drain pipe, cut through the remains two plough marks, Features 1-02 and 1-03. The two plough marks, which both contained minor amounts of charcoal fragments, are probably contemporary and their width of 0.65-0.8m and linear shape suggests they relate to rig and furrow ploughing.

A granite stone with one flat face, a possible quernstone rough-out showing no visible wear, was recovered from the topsoil at the western end of Trench 1.

Features 1-04 and 1-5 consisted of dark brown-black silty soil that appeared to be possible archaeological features. A section excavated through Feature 1-04 determined both to be natural soil deposits, stained by underlying iron panning. There was no charcoal present in the soil.



Figure 5 Plan of Trench 1

Trench 2

Trench 2 was located between Trenches 1 and 4, excavated northward from the southern border of the site. Six features were identified (Figure 6), five of which were of archaeological significance.

Feature 2-01 was a 0.60m-wide field drain trench which ran roughly parallel to the trench, extending outside of the excavated area. The field drain, containing gravel overlying a plastic drain pipe, cut through Feature 2-02, a 0.20m wide field drain containing ceramic drain pipe. A small ferrous lump (SF 03) was recovered from the re-deposited fill within the trench cut of Feature 2-01.

Feature 2-04, the same 0.20m-wide field drain trench as Feature 1-01, cut through Feature 2-05. A section through Feature 2-05 proved it was a dark brown-black silty soil deposit, not of archaeological interest.

Feature 2-03, a deposit of dark brown humic soil was interpreted as remains of an undisturbed ground surface.



Plate 2 Trench 2 – view NNW. Metre scale



Figure 6 Plan of Trench 2 (scale in metres)

Feature 2-06 appeared as the faintly visible remains of ard-marks or plough marks in the sandy subsoil. Similar features were seen elsewhere on the site, all of which are on a NE-SW alignment and are likely the very basal remains of linear plough marks.

A worked pebble tool, with two smoothed facets (SF 02) was recovered from the topsoil in Trench 2 and has been interpreted as a whetstone. Several small fragments of glazed 19th-20th century pottery were also identified in the trench topsoil.

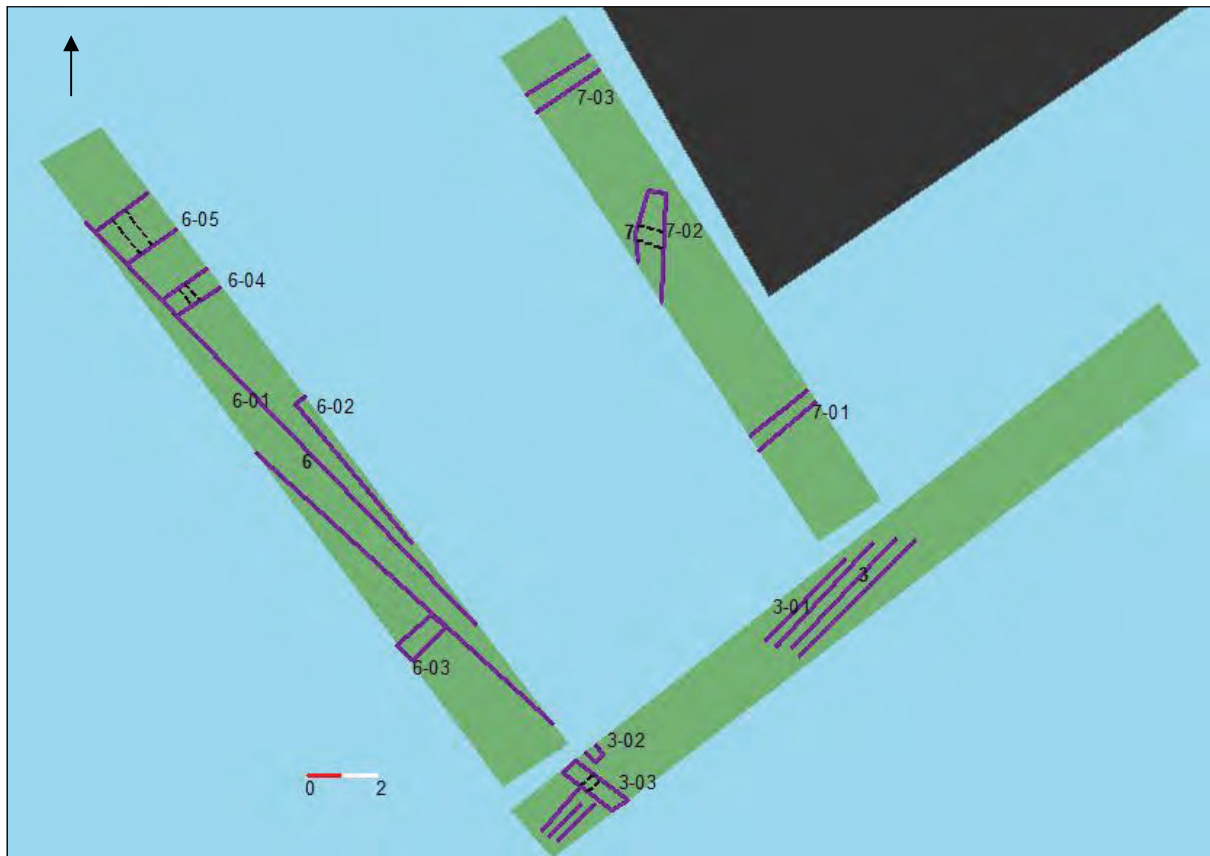


Figure 7 Plan showing Trench 3, Trench 6 and Trench 7 (scale in metres)

Trench 3

Trench 3 was located in the centre of the site along the south edge of the hard gravel surface recently built by the present contractor. Three features were identified in Trench 3 (Figure 7).

Feature 3-01 appeared in two areas of the trench as the faintly visible remains of ard-marks or plough marks in the sandy subsoil. The uniformity in width and length of the marks suggests they pertain to the same event across the site, reflected in similar recorded features in Trenches 2, 5, 9, 11, 12 and 14.

Feature 3-02, the same 0.20m-wide field drain trench as Feature 6-02, appeared just inside the trench edge. It was parallel to Feature 3-03, a 0.65m-wide plough mark aligned NW-SE, similar to numerous wide plough marks across the site and probably pertaining to rig and furrow planting.

One quartz cobble was identified in the topsoil of Trench 3.



Trench 4

Trench 4 was excavated along the south-eastern boundary of the site and revealed three features of interest (Figure 8).

Feature 4-03, a 0.20m-wide field drain trench containing a ceramic drain pipe, cut through Features 4-01 and 4-02.

Feature 4-01, a 0.7m-wide plough mark aligned N-S, similar to numerous wide plough marks across the site, was cut by Feature 4-02, a 'U'-shaped field drain trench containing tightly packing sub-angular stone fill. Feature 4-01 predates both field drains, and the drystone field drain predates Feature 4-03.

There were no archaeological finds recovered from the trench.

Plate 3 Trench 3 – view ENE. Metre scale

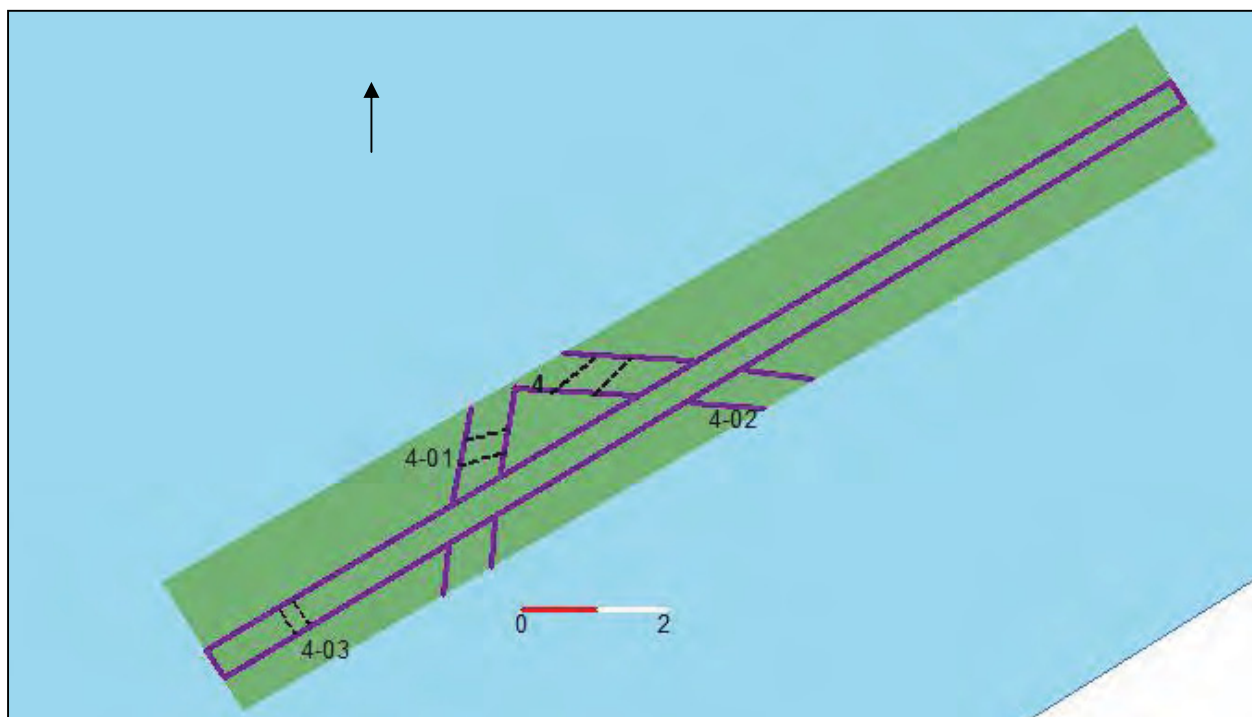


Figure 8 Plan of Trench 4 (scale in metres)



Plate 4 Trench 4 – view SW: features 4-03 parallel to trench, 4-02 to right and 4-01 to left. Metre scale

Trench 5

Trench 5 was located in the southeast corner of the site. Three features were identified in Trench 5 (Figure 9).

Feature 5-01 extended outside of the excavated area in the northern corner of Trench 5. This was a gravel-filled field drain, at least 0.60m-wide, covering a black plastic drain pipe 15cm in diameter, which was caught and burst by the mechanical digger.

Feature 5-02 appeared to be faintly visible remains of ard-marks or plough marks. The uniformity in width and length of the marks suggests they pertain to the same event across the site, reflected in similar recorded features in Trenches 2, 3, 9, 11, 12 and 14.

Feature 5-03 was a 0.20m-wide field drain trench which would contain a ceramic drain pipe. This feature was not sectioned due to waterlogged conditions, but is identical to the other field drain trenches on the site which contained ceramic



Plate 5 Trench 5 – view SSE

drain pipes.

There were no archaeological finds recovered from this trench, although the topsoil did contain much detritus which is assumed to be as a result of the construction of the new development road alongside the trench.

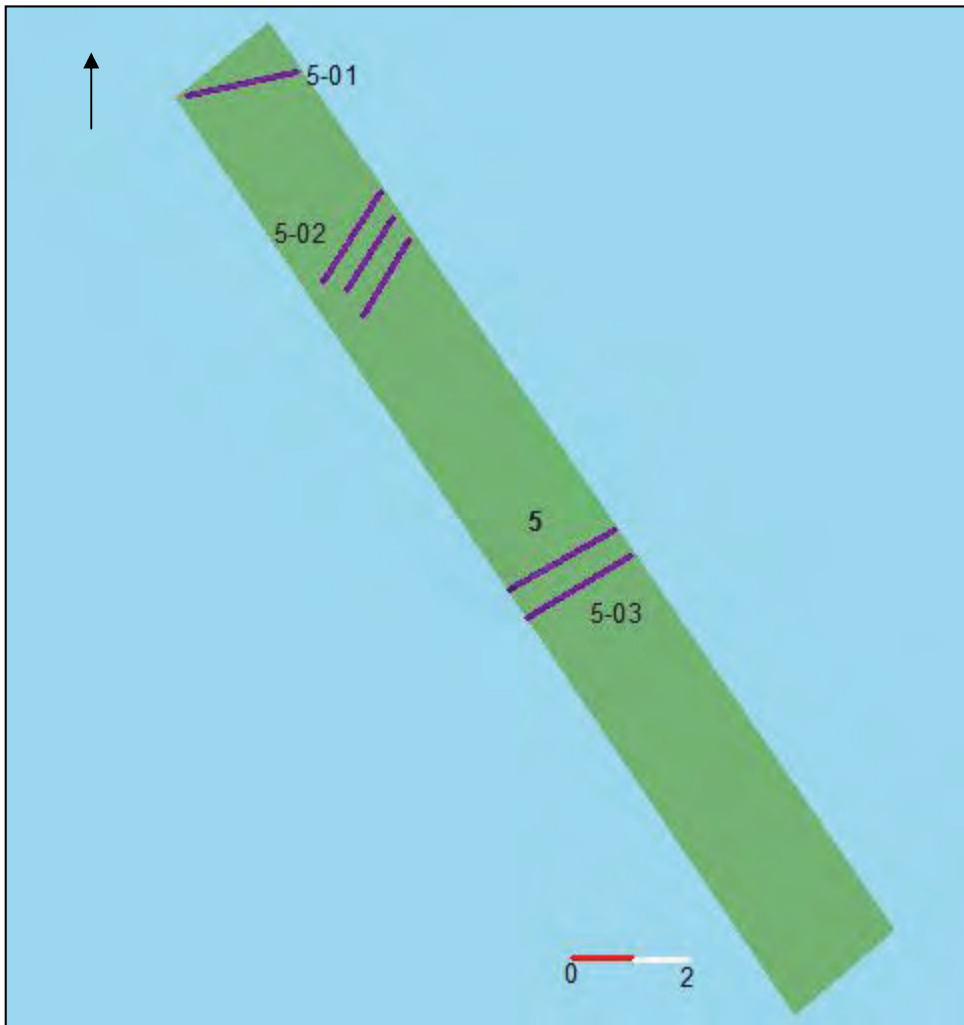


Figure 9 Plan of Trench 5 (scale in metres)

Trench 6

Trench 6 was located in the centre of the site, along the western end of the recently-laid hard gravel surface and adjacent to the eastern edge of the building contractor's spoil mound. Five features (Figure 7) were identified in the trench.

Feature 6-01 was a 0.60m-wide field drain trench which ran through the majority of the trench on a NNW-SSE alignment and identified as the same drain as seen in Feature 2-01 and Feature 10-01. The field drain, containing gravel overlying a plastic drain pipe, cut through Feature 6-04, a 0.20m-wide field drain containing ceramic drain pipe, and Feature 6-05, a ditch of unknown use.

Feature 6-02, the same 0.20m-wide field drain trench as Feature 3-02, ran parallel to the eastern edge of Trench 6 and extended outside of the excavated area.

Feature 6-03 was a 0.20m-wide field drain containing ceramic drain pipe, the same field drain as Feature 7-01 which was burst by the mechanical digger in Trench 7.

Feature 6-05 was the only feature on site not definitely interpreted as agricultural remains. A 0.85m-wide ditch aligned NE-SW with slanted sides and flat base, the feature was sectioned to a depth of 0.3m. The depth of the feature below the topsoil was unknown because topsoil had been recently excavated and covered in hard gravel by the building contractor. The ditch was filled with soil overlain by a thin deposit of sand. There was no charcoal visible in the fill and the use of the cut is unknown.



Plate 6 Trench 6 – view NNW. Metre scale

Plate 7 Trench 7 – view SE. Metre scale

Trench 7

Trench 7 was located in the centre of the site, along the western side of the recently constructed site compound enclosure. Three features were identified (Figure 7) in the trench.

Feature 7-01 was a 0.20m-wide field drain containing ceramic drain pipe, the same field drain as Feature 6-03, which was burst by the mechanical digger during excavation of the trench.

Feature 7-02 was a linear plough mark aligned N-S, 0.65-0.7m in width, comprised of dark brown-black rich soil with a thick layer of manure re-deposited in the centre of the fill. It is similar in width to numerous wide plough marks across the site, although about 10cm greater in depth with evident disturbance from the re-deposited manure in the fill.



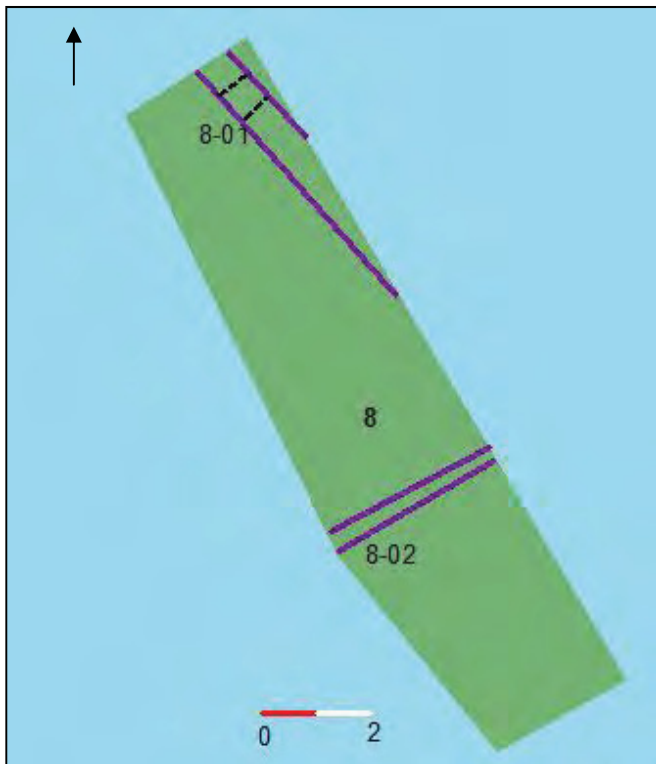


Figure 10 Plan of Trench 8 (scale in metres)

Trench 8

Trench 8 was the northernmost trench excavated during the evaluation. Two features were identified (Figure 10).

Feature 8-01 was the remains of a 0.65m-wide plough mark aligned NNW-SSE, similar to numerous wide plough marks across the site and probably pertaining to rig and furrow planting.

Feature 8-02 was a 0.20m-wide field drain trench which would contain a ceramic drain pipe. This feature was not sectioned due to waterlogged conditions, but is identical to the other field drain trenches on the site which contained ceramic drain pipes.

Trench 9

Trench 9 was located west of Trench 8 and north of Trench 6 and Trench 7. Two features of archaeological interest were uncovered in the trench (Figure 11).

Feature 9-01 was the remains of a 0.65m-wide plough mark aligned NE-SW, similar to numerous wide plough marks across the site and probably pertaining to rig and furrow planting.

Feature 9-02 appeared across the trench as parallel, linear plough marks, the bases of which are all that remains over the subsoil. Each plough mark is approximately 0.15-0.20m in width, separated from the next by approximately 0.15m. A section excavated through two of the marks showed a depth of up to 0.05m. The uniformity in width and length of the marks suggests they pertain to the same event across the site, reflected in similar recorded features in Trenches 2, 3, 5, 11, 12 and 14.

A long, thin ferrous object (SF 04) was recovered from the topsoil in Trench 9. The object, possibly wrought iron, has one smoothed end and appears broken on the opposite end. Its use is unknown.



Plate 8 Trench 8 – view N. Metre scale

Trench 10

Trench 10 was located north of Trench 6 and west of Trench 9. Two features were uncovered in the trench (Figure 11).

Feature 10-01 was the same gravel-filled 0.60m-wide field drain identified in Trench 2 (Feature 2-01) and in Trench 6 (Feature 6-01).

Feature 10-02 was a 0.24m-wide field drain containing a ceramic drain pipe.

Trench 11

Trench 11 was located between Trench 9 and Trench 10. Two features of interest were uncovered (Figure 11).

Feature 11-01 was a dark brown-black deposit of soil with minor charcoal inclusions. A section revealed that the feature was not of archaeological interest and was interpreted as soil redeposit.



Plate 9 Trench 10 – view SE. Metre scale

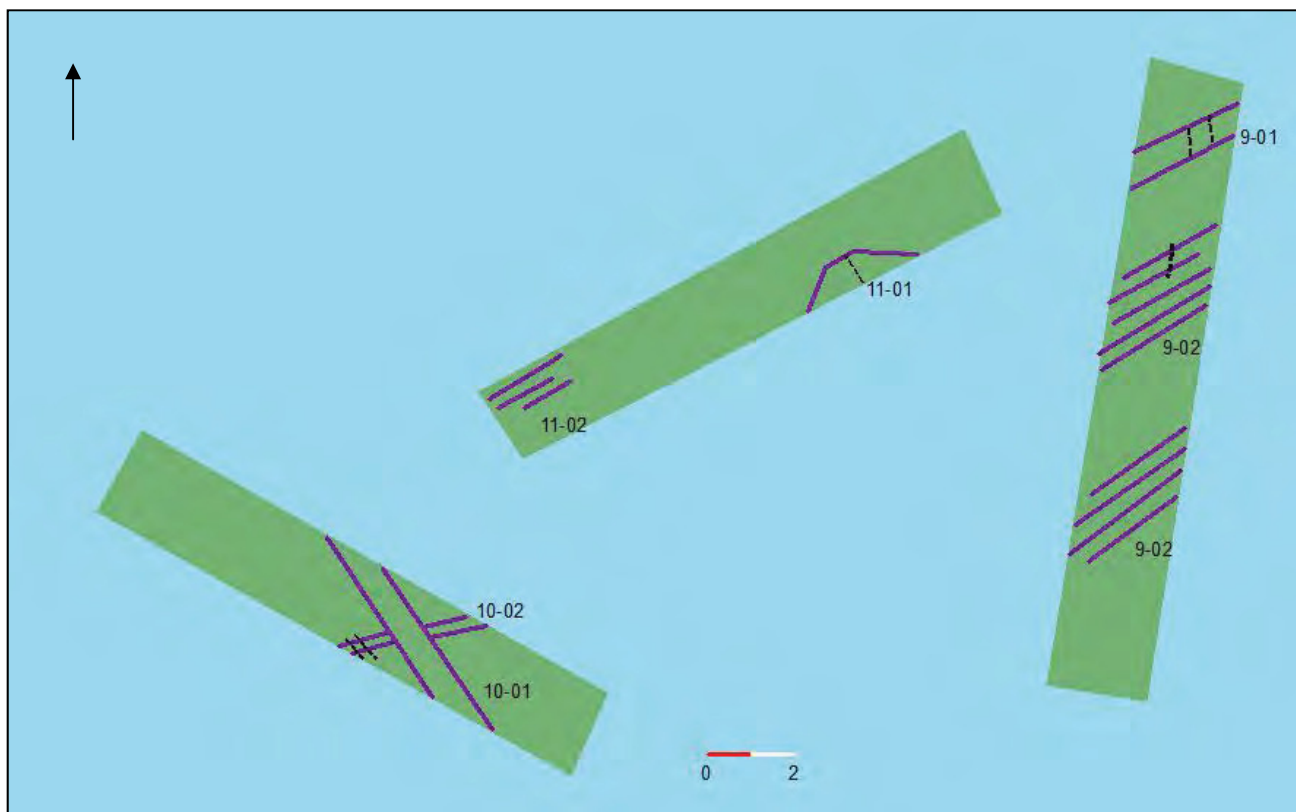


Figure 11 Plan showing Trench 9, Trench 10 and Trench 11 (scale in metres)



Plate 10 Trench 11 – view W Metre scale

Trench 13

Trench 13 was located in the northwest corner of the site. One feature of archaeological interest was identified (Figure 13)

Feature 13-01 was a 1m-wide ‘U’-shaped field drain trench aligned N-S. It contained subangular stones, which appeared graded from smaller stones at the base to larger stones in the top of the fill.

Feature 11-02 appeared in the west end of trench as the faintly visible remains of ard-marks or plough marks in the sandy subsoil. The uniformity in width and length of the marks suggests they pertain to the same event across the site, reflected in similar recorded features in Trenches 2, 3, 5, 9, 12 and 14.

Trench 12

Trench 12 was located north of the building contractor’s spoil mound. One feature of archaeological interest was identified (Figure 13).

Feature 12-01 appeared across the trench as parallel, linear plough marks, the bases of which are all that remains over the subsoil. Each plough mark is approximately 0.15-0.20m in width, separated from the next by approximately 0.15m. The uniformity in width and length of the marks suggests they pertain to the same event across the site, reflected in similar recorded features in Trenches 2, 3, 5, 9, 11 and 14.



Plate 11 Trench 13 – view WSW



Figure 12 Plan showing Trench 12 and Trench 13 (scale in metres)



Plate 12 Trench 14 – view SSE. Metre scale

Trench 14

Trench 14 was located west of the building contractor's spoil mound, along the western site boundary. Two features were identified in the trench (Figure 14).

Feature 14-01 appeared across the trench as parallel, linear plough marks, the bases of which are all that remains over the subsoil. Each plough mark is approximately 0.15-0.20m in width, separated from the next by approximately 0.15m. A section excavated through two of the marks showed a depth of up to 0.07m. The uniformity in width and length of the marks suggests they pertain to the same event across the site, reflected in similar recorded features in Trenches 2, 3, 5, 9, 11 and 12. One fragment of cream glazed earthenware (SF 05) was found in the fill of one of the plough marks.

Feature 14-02 was a 1.05m-wide trench and identified by the building contractor as the water mains trench.

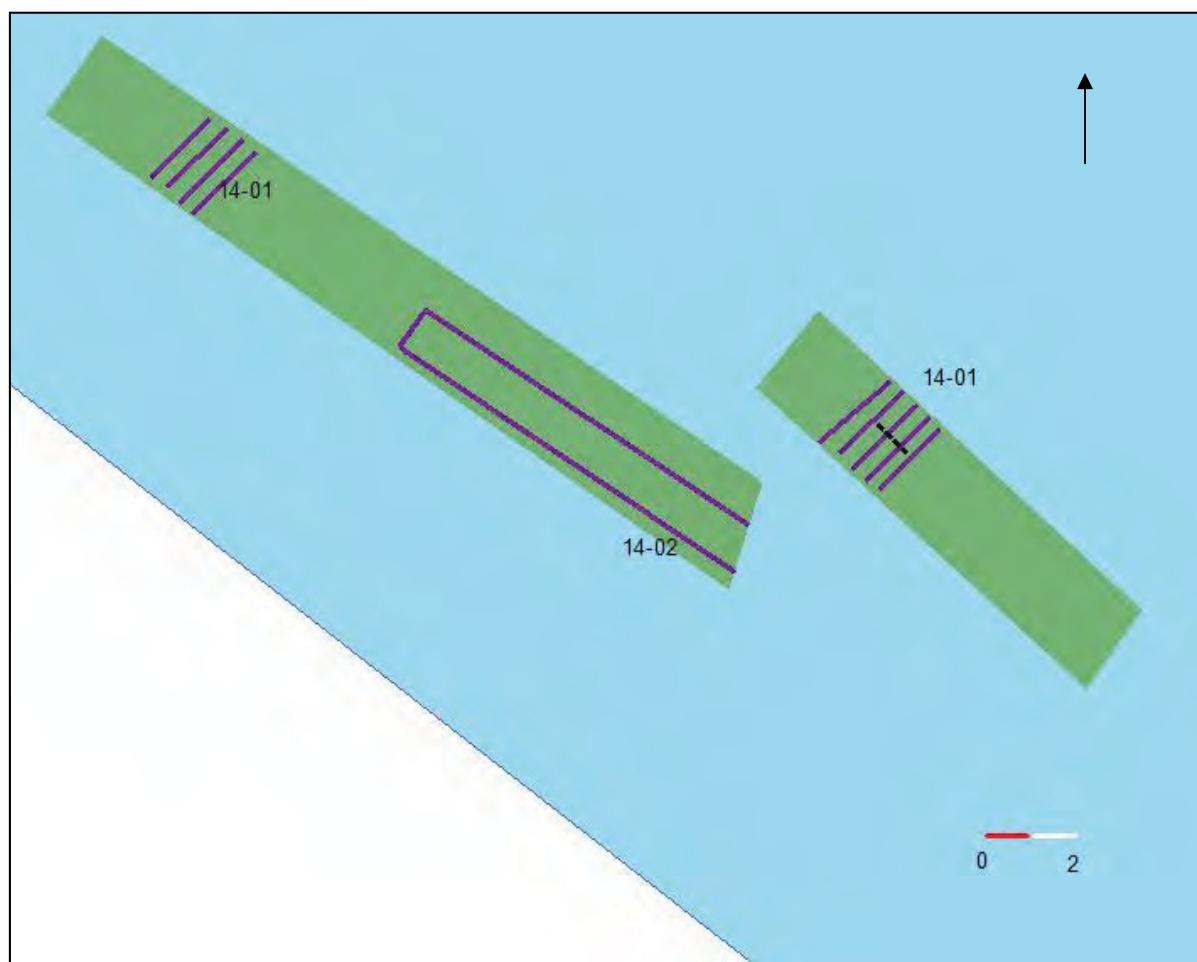


Figure 13 Plan of Trench 14 (scale in metres)

Trench 15

Trench 15 was located between a small spoil mound and large spoil mound, which were already on site at the time of the evaluation. One feature was identified in the trench (Figure 14).

Feature 15-01 was a 1m-wide 'U'-shaped field drain. It contained a mix of small-large stones and loose soil and appeared to have been mostly removed by prior disturbance on site, probably ploughing.



Figure 14 Plan of Trench 15 (scale in metres)



Plate 13 Trench 15. Metre scale

7 Discussion

7.1 Field drains

Three types of field drains were uncovered during the evaluation.

- 1) The most common field drain trench on the site contained 7cm diameter orange ceramic drainpipe within a 20-cm wide trench containing re-deposited soil fill.

[1-01]	ENE-WSW alignment, same as [2-04]
[2-02]	ENE-WSW alignment
[2-04]	ENE-WSW alignment, same as [1-01]
[3-02]	NW-SE alignment, same as [6-02]
[4-03]	ENE-WSW alignment
[5-03]	ENE-WSW alignment
[6-02]	NW-SE alignment, same as [3-02]
[6-03]	ENE-WSW alignment, same as [7-01]
[6-04]	ENE-WSW alignment, same as [7-03]
[7-01]	ENE-WSW alignment, same as [6-03]
[7-03]	ENE-WSW alignment, same as [6-04]
[8-02]	ENE-WSW alignment
[10-02]	E-W alignment

All but two of the Type 1 field drains were constructed on the same ENE-WSW alignment, suggesting the same phase of construction of the drain.



Plate 14 Type 1 field drain [4-03] to left, Type 2 field drain [4-02] to right. **Metre scale**

2) Three field drains containing drystone fill were uncovered

- [4-02] E-W alignment, 'U'-shaped drain 0.45m-wide containing closely packed medium subangular stones
- [13-01] N-S alignment, 'U'-shaped drain 1.0m-wide containing closely packed subangular stones, graded small from bottom to large on top
- [15-01] NW-SE alignment, wide 'U'-shaped drain 1.0-m wide containing small-medium subangular stones and loose soil fill; previously disturbed

Each of the type 2 field drains differ from one another in appearance and are not linked to the same phase of construction.

3) Two field drains contained gravel fill over plastic drainpipe.

- [2-01] NNW-SSE alignment, trench contained mixed re-deposited soil over small gravel fill covering black plastic drainpipe
- [5-01] E-W alignment, small gravel fill over black plastic drainpipe 15cm in diameter
- [6-01] Same as [2-01]
- [10-01] Same as [2-01]

The type 3 field drains are of modern construction methods as indicated by the plastic drain pipe.

7.2 Plough-marks

Two very different types of plough marks were uncovered across the site.

1) 0.65-0.8m wide with re-deposited soil fill, possible remains of rig and furrow planting

- [1-02] NNE-SSW alignment, 0.80m wide
- [1-03] NE-SW alignment, 0.80m wide
- [3-03] NW-SE alignment, 0.65m wide
- [4-01] N-S alignment, 0.70m wide
- [7-02] N-S alignment, 0.65m wide
- [8-01] NNW-SSW alignment, 0.65m wide
- [9-01] NE-SW alignment, 0.70m wide

It is possible that these wide, more random marks in the subsoil are the remains of rig and furrow cultivation on the site. There is no artefactual or stratigraphic evidence to date these marks to the second type of plough-mark found on the site.



Plate 15 Type 1 plough mark [8-01]. Metre scale

2) 0.15m wide parallel marks, often only faintly visible as scatters of linear marks

[2-06]	NE-SW alignment, faintly visible thin marks
[3-01]	NE-SW alignment, faintly visible thin marks
[5-02]	NE-SW alignment, faintly visible thin marks
[9-02]	NE-SW alignment, parallel plough-marks
[11-02]	NE-SW alignment, faintly visible thin marks
[12-01]	NE-SW alignment, parallel plough-marks
[14-01]	NE-SW alignment, parallel plough-marks

The second type of plough mark occurred on the same NE-SW alignment. It is almost certain that the fainter, thinner marks are the very scant remains of the same feature type. The plough-marks are identical to the same uncovered during trial trenching in 2008 and 2009 on neighbouring sites²⁴.

The consistency of the marks across the site suggests that they all pertain to the same phase of ploughing and were likely made by a plough which could have dug down as far down as the subsoil on the site. One sherd of possible late medieval earthenware pottery was found at the top of the fill of one sectioned plough marks in Trench 14 and could suggest a Medieval or later date to the feature.

The site does not appear to have been built upon in the past and the cartographic evidence supports that the land has a history of cultivation, possibly also supported by Roy's map.

²⁴ Dagg, C., 2008 and 2009.



Plate 16 Type 2 plough-marks [12-01]. **Metre scale**

7.3 Ditch [6-05]

One cut feature of unknown use appeared as a slant-sided, flat-based ditch in Trench 6. The feature was 0.85m wide across the top and the fill was sectioned to a depth of 0.3m to the subsoil. The uniformity of the sides and base of the cut suggests that the cut was structural rather than a plough-mark. Likewise there is a lack of indication of any other purposeful function. It is possible that it was a basic drainage ditch.



Plate 17 Feature [6-05], ditch of unknown use. **Metre scale**

8 Conclusions and Recommendations

Out of forty-one features uncovered on the site, only one was of unknown significance. Five features were determined to be soil deposits and not of archaeological significance, and one feature was the present-day water main trench.

The area evaluated contained nine different field drain trenches containing ceramic drain pipes, three different drystone field drains and two different field drains with plastic drain pipes. The extensive network of drainage and variance in type of field drain across the site indicates that it had been cultivated over a considerable time.

The evaluation also uncovered the remains of seven wide plough-marks (type 1 from above), interpreted as possible rig and furrow planting beds, and the remains of narrow, parallel plough-marks (type 2 from above) in seven trenches across the site. This shows at least two individual phases of cultivation, although there is no solid evidence that either type of marks predates another. The recovery of one single sherd of possible late medieval earthenware pot from a type 2 mark suggests a Medieval date although this simply could have been re-deposited during the ploughing event from a pre-existing context. The uniformity in position and size of the type 2 marks suggests a more advanced plough technique than the wide type 1 marks which are much more random in shape and layout.

The recovery of one stone pebble tool (SF 02) and a possible granite quernstone rough-out (SF 01) indicated that the site could have originally had prehistoric occupation and indeed a Neolithic axe head was found in an unknown context in nearby Arthurville²⁵. Also, it is possible that the wrought iron tool (SF 04) and cream-glazed earthenware pot sherd, both re-deposited, could have pertained to a Medieval presence on the site. The ditch of unknown use (Feature 6-05) is also intriguing as a possible separate phase of use of the site-though this does remain inconclusive.

²⁵ HHER #MHG8680.

The conclusion to be drawn from the trial trenching evaluation and desk-based assessment of the site is that it has been used extensively for agriculture over many years. The archaeological features uncovered and the historical maps confirm this assessment. The presence of the two stone artefacts could merely be from re-deposited contexts and cannot be related to any particular features.

Although more field drains and plough-marks are likely to be uncovered, as a result of this evaluation we recommend that no further work in mitigation is required. However, the responsibility for deciding whether further work is required lies solely with the Highland Council Archaeology Unit.

9 Archive Location

The archive is held by Highland Archaeology Services.

10 References

Dagg, C., 2008. *Land South of Jubilee Drive, Tain, Easter Ross: Archaeological Trial Trenching*. Accessed at <http://her.highland.gov.uk/hbsmrgatewayhighland/DataFiles/LibraryLinkFiles/84792.pdf>

Dagg, C., 2009. *Land South of Jubilee Drive, Tain, Easter Ross: Archaeological Trial Trenching*. Accessed at <http://her.highland.gov.uk/hbsmrgatewayhighland/DataFiles/LibraryLinkFiles/94727.pdf>

Highland Historic Environment Record accessed at <http://her.highland.gov.uk/>

National Library of Scotland accessed at <http://www.nls.uk/maps/>

Oram, R.D., Martin, P.F., McKean, C.A., Neighbour, T. and Cathcart, A., 2009. *Historic Tain: Archaeology and Development*. Edinburgh: Historic Scotland and York: Council for British Archaeology

The Scottish Government 2010. Scottish Planning Policy. Accessed at <http://www.scotland.gov.uk/Resource/Doc/300760/0093908.pdf>

CARTOGRAPHIC REFERENCES accessed at <http://www.nls.uk/maps/>

Blaeu, Joan. *Atlas of Scotland*, 1654.

Moll, Herman, 1745. *County Maps of Scotland: The Shires of Ross and Cromartie*.

Ordnance Survey 1881. *1st Edition Ross and Cromarty Shires Mainland XLI* six inch to the mile.

Ordnance Survey 1878. *1st Edition Sheet 94 Cromarty* one inch to the mile.

Ordnance Survey 1896. *2nd Edition Sheet 94 Cromarty* one inch to the mile.

Ordnance Survey 1911. *3rd Edition Sheet 94 Cromarty* one inch to the mile.

Ordnance Survey 1930. *Popular Edition Sheet 21 Dornoch* one inch to the mile.

Pont, Timothy. Maps of Scotland 1580s – 1590s. *Tarbat Ness, Easter Ross*.

Roy, William, 1747-55. *Military Survey of Scotland*.

Thomson, John, 1832. *Atlas of Scotland: Northern Part of Ross and Cromarty Shires*.

APPENDIX 1: Trenches

Trench	Dimensions (m)	Depth (m)	Features	Description	Location
1	19 x 1.8	0.45-0.6	1-01, 1-02, 1-03, 1-04, 1-05	Aligned NE-SW; Mid-dark brown soil with <5% small-medium cobbles overlying subsoil: slightly undulating white-grey stony sand subsoil throughout SW third of trench and orange-brown sandy gravel with <10 % small cobbles to NE side of trench; some staining of subsoil from iron pan and minerals	NH 77123 81439 to NH 77139 81449
2	20 x 1.8	0.35-0.6	2-01, 2-02, 2-03, 2-04, 2-05	Aligned NW-SE; Dark-mid brown soil overlying subsoil: white-grey stony sand with 5% pebbles and small cobbles, light brown-orange sandy gravel to NW 1/4 of trench; some staining of subsoil from iron pan and minerals	NH 77155 81451 to NH 77141 81465
3	25 x 1.8	0.3-0.45	3-01, 3-02, 3-03	Aligned NE-SW; Dark-mid brown soil overlying pale orange-light brown sandy gravel subsoil; 1 large quartz cobble within topsoil	NH 77130 81472 to NH 77150 81488
4	16 x 1.8	0.4-0.55	4-01, 4-02, 4-03	Aligned ENE-WSW; Dark-mid brown soil overlying pale orange-light brown sandy gravel subsoil	NH 77160 81457 to NH 77174 81464

Trench	Dimensions (m)	Depth (m)	Features	Description	Location
5	19 x 1.8	0.35-0.55	5-01, 5-02, 5-03	Aligned NNW-SSE; General rubbish and site detritus throughout topsoil, dark brown soil; overlies light-brown sandy gravel subsoil; 2 large granite boulders recovered from subsoil/topsoil transition	NH 77170 81463 to NH 77159 81483
6	24 x 1.8	Unknown, already excavated	6-01, 6-02, 6-03, 6-04, 6-05	Aligned NNW-SSE; Trench cut through recently laid gravel hard surface for site compound so nature of topsoil unknown; pale orange-light brown sandy gravel subsoil	NH 77130 81474 to NH 77116 81494
7	18 x 1.8	Unknown, already excavated	7-01, 7-02, 7-03	Aligned NNW-SSE; Trench cut through recently laid gravel hard surface for site compound so nature of topsoil unknown; pale orange-light brown sandy gravel subsoil	NH 77140 81482 to NH 77130 81497
8	14 x 1.8	0.35-0.4	8-01, 8-02	Aligned NNW-SSE; Dark-mid brown soil overlying pale orange-light brown sandy gravel subsoil	NH 77142 81517 to NH 77135 81529
9	15 x 1.8	0.3	9-01, 9-02	Aligned NE-SW; Dark-mid brown soil overlying dark orange-brown sandy gravel subsoil	NH 77121 81503 to NH 77123 81519
10	13 x 1.8	0.4	10-01, 10-02	Aligned NE-SW; Dark-mid brown soil overlying dark orange-brown sandy gravel subsoil	NH 77107 81502 to NH 77096 81509
11	13 x 1.8	0.35-0.4	11-01, 11-02	Aligned ENE-WSW; Dark-mid brown soil overlying pale grey-white sand subsoil; 2 large boulders in topsoil	NH 77106 81510 to NH 77118 81516

Trench	Dimensions (m)	Depth (m)	Features	Description	Location
12	23 x 1.8	0.3	12-01	Aligned ENE-WSW; Dark-mid brown soil overlying dark orangey-yellow soily sand at NE end through to grey-yellow clayey sand at SW end	NH 77091 81483 to NH 77111 81494
13	14 x 1.8	0.3	13-01	Aligned NE-SW; Dark-mid brown soil overlying white-orange-brown sandy cobbles and gravel subsoil	NH 77076 81478 to NH 77080 81490
14	30 x 1.8	0.4-0.45	14-01, 14-02	Aligned NW-SE; Dark-mid brown soil overlying dark orange-brown sandy gravel subsoil	NH 77071 81474 to NH 77097 81460
15	30 x 1.8	0.4-0.9	15-01	Aligned WNW-ESE; Dark-mid brown soil overlying dark orange-brown soily sand at W end to grey-white deep clay in centre of trench to dark orange sandy gravel at E end	NH 77100 81456 to NH 77131 81454

APPENDIX 2: Features

Feature	Type	Location	Dimensions (m)	Plans	Photos	Contexts	Finds	Comments
1-01	Field drain	NH 77126 81449 to NH 77134 81444	0.2 wide; section depth 0.25		5, 6, 10- 12	101, 102	-	Field drain trench, ENE-WSW alignment; trench contained soil fill over orange ceramic pipe 7cm in diameter
1-02	Plough-mark	NH 77125 81441	0.8-1.0 wide, section depth 0.18		5, 6, 10- 12	103	-	Linear plough feature (NW-SE alignment) showing no structure; contained very mixed fill of dark brown-black soil and white-grey sandy subsoil; interpreted as remains of ploughed soil and is associated with adjacent smaller linear plough-marks; parallel to 1-03
1-03	Plough-mark	NH 77126 81442	0.65-0.8 wide; section depth 0.09		5, 6, 13	104	-	Linear plough feature (NNW-SSE alignment) showing no structure; contained very mixed fill of dark brown-black soil and white-grey sandy subsoil; interpreted as remains of ploughed soil associated with adjacent smaller linear plough-marks; parallel to 1-02
1-04	Deposit	NH 77134 81447	1.1 long x 0.3 wide section depth 0.06		5, 6, 14	105	-	Dark brown-black silty soily gravel with 5% stone, mixed with iron pan/staining from subsoil; not an archaeological feature

Feature	Type	Location	Dimensions (m)	Plans	Photos	Contexts	Finds	Comments
1-05	Deposit	NH 77136 81448	0.9 long x 0.65 wide, section depth 0.06		8, 9	106	-	Dark brown-black silty soily gravel with 5% stone, mixed with iron pan/staining from subsoil; not an archaeological feature
2-01	Field drain	NH 77141 81465 to NH 77151 81457	0.6 wide (extends below T2 edge); section depth 0.38		17, 24, 26	201, 202	3	Field drain, same as Feature 6-01, NNW-SSE alignment; trench contains re-deposited mixed fill over small stone gravel over plastic black drainage pipe
2-02	Field drain	NH 77144 81463	0.2 wide, section depth 0.28		17, 24, 25	203, 204	-	Field drain trench, ENE-WSW alignment; trench contained soil fill and orange ceramic pipe 7cm in diameter
2-03	Deposit	Centred on NH 77150 81456	0.55-1.3 wide by 3.0 long, section depth 0.09		18, 22, 23	205	-	Dark brown humic soil deposit; interpreted as undisturbed remains of earlier ground surface; not an archaeological feature
2-04	Field drain	NH 77153 81454	0.2 wide		19	206, 207	-	Same as 1-01: Field drain trench, ENE-WSW alignment; trench contained soil fill and orange ceramic pipe 7cm in diameter
2-05	Deposit	NH 77152 81453	0.9 wide by 1.35 long, section depth 0.12		19, 21	208	-	Soil scatter, mixed with iron pan; black colour resulting from staining by subsoil as in 1-04, 1-05; not an archaeological feature
2-06	Ard-marks	NH 77154 81452	N/A		20	-	-	Linear ard-marks or remains of ploughing, NE-SW alignment

Feature	Type	Location	Dimensions (m)	Plans	Photos	Contexts	Finds	Comments
3-01	Ard-marks	NH 77138 81479	N/A		28	-	-	Linear ard-marks or remains of ploughing, NE-SW alignment
3-02	Field drain	NH 77132 81475	0.2 wide, section depth 0.25		27	301, 302	-	Field drain trench, same as 6-02, NW-SE alignment; trench contained soil fill over orange ceramic pipe 7cm in diameter
3-03	Plough-mark	NH 77131 81474	0.65 wide, section depth 0.15		27, 30	303	-	Linear plough feature (NW-SE alignment), parallel to 3-02, showing no structure and containing very mixed fill of dark brown-black soil and white-grey sandy subsoil; interpreted as remnants of ploughed soil
4-01	Plough-mark	Centred on NH 77138 81479	0.7 wide, 17 cm deep		38, 40	401	-	Linear plough feature, N-S alignment, consisting of dark brown-black humic soil; interpreted as plough-mark, possibly rig and furrow;
4-02	Field drain	NH 77166 81460	0.45 wide, section depth 0.34		38, 41	402, 403	-	Field drain trench, E-W alignment; U-shaped ditch containing sub-angular stones
4-03	Field drain	NH 77162 81458 to NH 77174 81465	0.2 wide, section depth 0.23		38, 39	404, 405	-	Field drain trench, ENE-WSE alignment; trench contained soil fill over orange ceramic pipe 7cm in diameter

Feature	Type	Location	Dimensions (m)	Plans	Photos	Contexts	Finds	Comments
5-01	Field drain	NH 77160 81483	Not fully exposed, min 0.6 wide		43, 44	501, 502	-	Field drain trench on E-W alignment, located at very end of trench, partly uncovered and burst by digger 0.4m below turf; trench contained small gravel fill over black plastic pipe 15cm in diameter; appeared to be the start of the field drain, marked by flat wood piece;
5-02	Ard-marks	NH 77162 81481	-		45	-	-	Linear ard-marks or remains of ploughing, NE-SW alignment
5-03	Field drain	Centre of T5: NH 77166 81475	0.2 wide, not sectioned, waterlogged conditions		46	503, 504	-	Field drain trench on ENE-WSW alignment, same as the other field drain trenches containing orange ceramic pipe
6-01	Field drain	NH 77129 81478 to NH 77118 81490	0.6 wide, section depth 0.38		31, 32	601, 602	-	Field drain, same as Feature 2-01, NNW-SSE alignment; trench contains re-deposited mixed fill over small stone gravel over plastic black drainage pipe
6-02	Field drain	NH 77127 81481 to NH 77124 81485	0.2 wide, section depth 0.25		32	603, 604	-	Field drain trench, same as 3-02, NW-SE alignment; trench contained soil fill over orange ceramic pipe 7cm in diameter

Feature	Type	Location	Dimensions (m)	Plans	Photos	Contexts	Finds	Comments
6-03	Field drain	NH 77127 81479	0.2 wide, section depth 0.12		31	605, 606	-	Field drain trench, same as 7-01, ENE-WSW alignment; trench contained soil fill over orange ceramic pipe 7cm in diameter
6-04	Field drain	NH 77119 81489	0.2 wide, section depth 0.12		33, 51	607, 608	-	Field drain trench, same as 7-03, ENE-WSW alignment; trench contained soil fill over orange ceramic pipe 7cm in diameter
6-05	Ditch	NH 77118 81491	0.85 wide, section depth 0.3		35-37	609, 610	-	Remains of ditch of unknown use with slanted sides and flat base; NE-SW alignment; fill consisted of thin layer yellow-white sand over mid brown sandy soil fill with 5% large cobbles
7-01	Field drain	NH 77138 81485	0.2 wide		47	701, 702	-	Field drain trench, same as 6-03, NE-SW alignment; trench contained soil fill over orange ceramic pipe 7cm in diameter
7-02	Plough-mark	NH 77134 81491	0.65 wide, section depth 0.33		48, 52	703	-	Linear plough feature, N-S alignment, consisting of dark brown-black soil with thick layer of manure in centre and mixed with sandy gravel subsoil; interpreted as remnants of ploughing, possibly rig and furrow;
7-03	Field drain	NH 77132 81495	0.2 wide		49	704, 705	-	Field drain trench, same as 6-04, NE-SW alignment; trench contained soil fill over orange ceramic pipe 7cm in diameter
8-01	Plough-mark	NH 77136 81530	0.65 wide, section depth 0.19		54, 69	801	-	Linear plough feature, NNW-SSE alignment, consisting of dark brown-black soil mixed with sandy gravel subsoil; interpreted as remnants of ploughing, possibly rig and furrow

Feature	Type	Location	Dimensions (m)	Plans	Photos	Contexts	Finds	Comments
8-02	Field drain	NH 77140 81522	0.2 wide, not sectioned, waterlogged conditions		55	802, 803	-	Field drain trench, ENE-WSW alignment; same appearance as all other field drain trenches containing ceramic drain pipe
9-01	Plough-mark	NH 77123 81516	0.70 wide, section depth 0.22		56, 70	901	-	Linear plough feature, NE-SW alignment, consisting of dark brown-black sandy soil; interpreted as remnants of ploughing, possibly rig and furrow
9-02	Plough-marks	South half of T9	0.15-0.2 wide, two sections, 0.05 deep		57, 58, 71, 72	902	-	Series of linear, parallel plough-marks on NE-SW alignment; approximately 5-10 cm apart, same as 12-01 and 14-01
10-01	Field drain	NH 77106 81503	0.6 wide		60	1001, 1002	-	Field drain, same as Feature 6-01, NNW-SSE alignment; trench contains re-deposited mixed fill over small stone gravel over plastic black drainage pipe
10-02	Field drain	NH 77102 81505	0.24 wide, section depth 0.31		60, 74	1003, 1004	-	Field drain trench, E-W alignment; trench contained soil fill over orange ceramic drain pipe
11-01	Deposit	NH 77114 81514	1.5 long x 0.7 wide, section depth 0.14		61, 73	1101	-	Dark brown-black deposit of soil with very minor small charcoal inclusions; not an archaeological feature

Feature	Type	Location	Dimensions (m)	Plans	Photos	Contexts	Finds	Comments
11-02	Ard-marks	W end of T11, NH 77108, 81511	-		-	-	-	Linear ard-marks or remains of ploughing, NE-SW alignment
12-01	Plough-marks	Throughout T12	0.15-0.2 wide		63	-		Series of linear, parallel plough-marks on NE-SW alignment; approximately 5-10 cm apart, same as 9-02 and 14-01
13-01	Field drain	NH 77080 81489	1.0 wide, section depth 0.22		64, 65, 75, 76	1301, 1302	-	Field drain trench, N-S alignment; wide U-shape trench containing subangular stones, smaller at base and larger in upper fill
14-01	Plough-marks	Throughout T14	0.15-0.2 wide, sectioned twice, 0.05-0.07 deep		66, 67, 77, 78	1401	5	Series of linear, parallel plough-marks on NE-SW alignment; approximately 5-10 cm apart, same as 9-02 and 12-01
14-02	Water main trench	Parallel to T14, T14 shifted E	1.05 wide, not sectioned		68	1402, 1403	-	Linear trench, 45cm below topsoil, containing water main below very mixed re-deposited dark brown soil and sandy gravel subsoil
15-01	Field drain	NH 77108 81455	1.0 wide, section depth 0.14		79, 80, 81	1501, 1502	-	Field drain trench, NW-SE alignment, wide U-shape trench containing 30% small-medium subangular stones and loose soil fill

APPENDIX 3: Contexts

No.	Type	Description	Over	Under	Fill of	Filled by	Cut by	Finds	Feature	Interpretation
100	Deposit	Mid-dark brown soil with <5% small-medium cobbles	101-107					SF 01	-	Topsoil
101	Cut	Linear trench cut, 0.2m wide, ENE-WSW aligned		100		102		-	1-01	Field drain, cuts through 103 and 104
102	Deposit	Dark brown soil and 5% stone fragments	107	100	101			-	1-01	Re-deposited fill of field drain trench containing orange ceramic drain pipe
103	Deposit	Dark brown-black soil and white-grey sandy subsoil mixed; some small charcoal fragments scattered through areas	107	100			101	-	1-02	Plough-mark
104	Deposit	Dark brown-black soil and white-grey sandy subsoil mixed; very minor scattered charcoal fragments found in section	107	100			101	-	1-03	Plough-mark
105	Deposit	Dark brown-black silty gravel, 5% small stone	107	100				-	1-04	Soil scatter
106	Deposit	Dark brown-black silty gravel, 5% small stone	107	100				-	1-05	Soil scatter

No.	Type	Description	Over	Under	Fill of	Filled by	Cut by	Finds	Feature	Interpretation
107	Deposit	White-grey sand alternating with pale orange-brown sandy gravel with pebbles and small cobbles		100, 102-106				-	-	Natural
200	Deposit	Mid-dark brown soil with <5% small-medium cobbles	209					SF 02	-	Topsoil
201	Cut	Linear trench cut, same as (601), NNW-SSE alignment	-	200		202		-	2-01	Field drain, cuts through 203 and 204
202	Deposit	Dark brown soil mixed with pale orange-brown sandy gravel subsoil overlying small stone gravel	209	200	201			SF 03	2-01	Re-deposited fill and gravel layer within field drain trench containing black plastic drain pipe
203	Cut	Linear trench cut, 0.2 wide, ENE-WSW aligned	-	200		204	201	-	2-02	Field drain
204	Deposit	Mid-dark brown soil with 5-10% small gravel		200	203		201	-	2-02	Re-deposited fill of field drain trench containing orange ceramic drain pipe
205	Deposit	Dark brown-black humic, dry loam	209	200				-	2-03	Old ground surface
206	Cut	Linear trench cut, 0.2m wide, ENE-WSW aligned	-	200		207		-	2-04	Field drain, cuts through 208
207	Deposit	Dark brown soil and 5% stone fragments	209	200	206			-	2-04	Re-deposited fill of field drain trench containing orange ceramic drain pipe

No.	Type	Description	Over	Under	Fill of	Filled by	Cut by	Finds	Feature	Interpretation
208	Deposit	Dark brown silty sand and 5% small cobbles and gravel	209	200			206	-	2-05	Soil scatter
209	Deposit	White-grey sand alternating with pale orange-brown sandy gravel with pebbles and small cobbles	-	200				-	-	Natural
300	Deposit	Mid-dark brown soil with <5% small-medium cobbles	301-304					-	-	Topsoil
301	Cut	Linear trench cut, 0.2 wide, NW-SE alignment		300		302		-	3-01	Field drain
302	Deposit	Dark brown soil and 5-10% small stone cobbles		300	301			-	3-01	Re-deposited fill of field drain trench containing orange ceramic drain pipe
303	Deposit	Dark brown-black soil mixed with white-grey sandy subsoil	304	300				-	3-02	Plough-mark
304	Deposit	Pale orange-brown sandy gravel		300-303				-	-	Natural
400	Deposit	Mid-dark brown soil with <5% small-medium cobbles	401-406					-	-	Topsoil
401	Deposit	Dark brown-black humic soil, <1% small stone cobbles	406	400			402, 404	-	4-01	Plough-mark
402	Cut	Linear, U-shaped drain cut, 0.45 wide, E-W alignment	-	400		403	404	-	4-02	Field drain

No.	Type	Description	Over	Under	Fill of	Filled by	Cut by	Finds	Feature	Interpretation
403	Deposit	Small subangular stones	406	400	402			-	4-02	Fill of field drain
404	Cut	Linear trench cut, 0.2 wide, NW-SE alignment	-	400		405		-	4-03	Field drain
405	Deposit	Dark brown soil and 5% small stone cobbles	406	400	404			-	4-03	Re-deposited fill of field drain trench containing orange ceramic drain pipe
406	Deposit	Pale orange-brown sandy gravel		400-405				-	-	Natural
No.	Type	Description	Over	Under	Fill of	Filled by	Cut by	Finds	Feature	Interpretation
500	Deposit	Mid-dark brown soil with <5% small-medium cobbles	501-505					-	-	Topsoil
501	Cut	Linear trench cut, E-W alignment	-	500				-	5-01	Field drain trench
502	Deposit	Dark brown soil and sandy gravel mix, re-deposited in trench	505	500				-	5-01	Re-deposited fill of field drain trench containing black plastic drain pipe
503	Cut	Linear trench cut, 0.2 wide, E-W alignment	-	500				-	5-03	Field drain trench
504	Deposit	Dark brown soil and 5% small stone cobbles	505	500				-	5-03	Re-deposited fill of field drain trench containing orange ceramic drain pipe
505	Deposit	Pale orange-brown sandy gravel		500-504				-	-	Natural

No.	Type	Description	Over	Under	Fill of	Filled by	Cut by	Finds	Feature	Interpretation
600	Deposit	Mid-dark brown soil with <5% small-medium cobbles	601-611					-	-	Topsoil
601	Cut	Linear trench cut, 0.6 wide, NNW-SSE alignment	-	600		602		-	6-01	Field drain trench, same as 2-01
602	Deposit	Re-deposited, mixed dark brown soil and sandy gravel fill over small stone gravel	611	600	601			-	6-01	Fill of field drain containing black plastic drain pipe
603	Cut	Linear trench cut, 0.2 wide, NW-SE alignment	-	600		604		-	6-02	Field drain trench, same as 3-02
604	Deposit	Dark brown soil and <5% stone cobbles	611	600	603			-	6-02	Re-deposited fill of field drain trench containing orange ceramic drain pipe
605	Cut	Linear field drain trench, 0.2 wide, NE-SW alignment	-	600		606	601	-	6-03	Field drain trench, same as 7-01
606	Deposit	Dark brown soil and 5% small stone cobbles	611	600	605			-	6-03	Re-deposited fill of field drain trench containing orange ceramic drain pipe
607	Cut	Linear field drain trench, 0.2 wide, NE-SW alignment	-	600		608	601	-	6-04	Field drain trench, same as 7-03
608	Deposit	Dark brown soil and 5% small stone cobbles	611	600	607			-	6-04	Re-deposited fill of field drain trench containing orange ceramic drain pipe
609	Cut	Linear ditch cut, slanted sides to flat base	-	600		610		-	6-05	Linear ditch of unknown use

No.	Type	Description	Over	Under	Fill of	Filled by	Cut by	Finds	Feature	Interpretation
610	Deposit	Thin layer of yellow-white sand over mid brown sandy soil with 5% large cobbles	611	600	609			-	6-05	Sandy soil fill of ditch
611	Deposit	Pale orange-brown sandy gravel		600-610				-	-	Natural
700	Deposit	Mid-dark brown soil with <5% small-medium cobbles	701-706					-	-	Topsoil
701	Cut	Linear field drain trench, 0.2 wide, NE-SW alignment	-	700		702		-	7-01	Field drain trench, same as 6-03
702	Deposit	Mid-dark brown soil with <5% small-medium cobbles	706	700	701			-	7-01	Re-deposited fill of field drain trench containing orange ceramic drain pipe
703	Deposit	Linear plough feature, N-S alignment, consisting of dark brown-black soil with thick layer of manure in centre and mixed with sandy gravel subsoil	706	700				-	7-02	Plough-mark, possibly from rig and furrow
704	Cut	Linear field drain trench, 0.2 wide, NE-SW alignment	-	700		705		-	7-03	Field drain trench, same as 6-04
705	Deposit	Mid-dark brown soil with <5% small-medium cobbles	706	700	704			-	7-03	Re-deposited fill of field drain trench containing orange ceramic drain pipe

No.	Type	Description	Over	Under	Fill of	Filled by	Cut by	Finds	Feature	Interpretation
706	Deposit	Pale orange-brown sandy gravel		700-705				-	-	Natural
800	Deposit	Mid-dark brown soil with <5% small-medium cobbles	801-804					-	-	Topsoil
801	Deposit	Linear plough feature, NNW-SSE alignment, consisting of dark brown-black soil mixed with sandy gravel subsoil	804	800				-	8-01	Plough-mark, possibly from rig and furrow
802	Cut	Linear field drain trench, 0.2 wide, E-W alignment	-	800		803		-	8-02	Field drain trench
803	Deposit	Mid-dark brown soil with <5% small-medium cobbles	804	800	802			-	8-02	Re-deposited fill of field drain trench, probably containing orange ceramic drain pipe
804	Deposit	Pale orange-brown sandy gravel		800				-	-	Natural
900	Deposit	Mid-dark brown soil with <5% small-medium cobbles	901-903					SF 04	-	Topsoil
901	Deposit	Linear plough feature, NE-SW alignment, consisting of dark brown-black sandy soil	903	900				-	9-01	Plough mark, possibly from rig and furrow
902	Deposit	Linear, parallel plough marks on NE-SW alignment, consisting of dark brown-black soil	903	900				-	9-02	Linear plough marks, same as 1201, 1401

No.	Type	Description	Over	Under	Fill of	Filled by	Cut by	Finds	Feature	Interpretation
903	Deposit	Dark orange-brown sandy silty gravel		900-902				-	-	Natural
1000	Deposit	Mid-dark brown soil with <5% small-medium cobbles						-	-	Topsoil
1001	Cut	Linear trench cut, 0.6 wide, NNW-SSE alignment						-	10-01	Field drain trench, same as 2-01, 6-01
1002	Deposit	Re-deposited, mixed dark brown soil and sandy gravel fill over small stone gravel						-	10-01	Fill of field drain containing black plastic drain pipe
1003	Cut	Linear trench cut, 0.24 wide, E-W alignment						-	10-02	Field drain trench
1004	Deposit	Mid-dark brown gravelly soil						-	10-02	Re-deposited fill of field drain trench, probably containing orange ceramic drain pipe
1005	Deposit	White-grey sand alternating with pale orange-brown sandy gravel with pebbles and small cobbles						-	-	Natural
1100	Deposit	Mid-dark brown soil with <5% small-medium cobbles	1102					-	-	Topsoil
1101	Deposit	Deposit of brown-black soil with very minor small charcoal inclusions;	1102					-	11-01	Soil scatter

No.	Type	Description	Over	Under	Fill of	Filled by	Cut by	Finds	Feature	Interpretation
1102	Deposit	Pale grey-white sand		1100, 1101				-	-	Natural
1200	Deposit	Mid-dark brown soil with <5% small-medium cobbles	1201, 1202					-	-	Topsoil
1201	Deposit	Linear, parallel plough marks on NE-SW alignment, consisting of dark brown-black soil	1202	1200				-	12-01	Linear plough marks, same as 901, 1401
1202	Deposit	Alternating dark orange-brown-yellow soily sand and grey-yellow clayey gravel		1200, 1201				-	-	Natural
1300	Deposit	Mid-dark brown soil with <5% small-medium cobbles	1301- 1303					-	-	Topsoil
1301	Cut	Linear field drain, 1.0 wide, N-S alignment	-	1300		1302		-	13-01	Field drain
1302	Deposit	Subangular stones, smaller at base and larger in upper fill	1303	1300	1301			-	13-01	Stone fill of field drain
1303	Deposit	White-grey-orange sandy gravel and small-medium cobbles		1300- 1302				-	-	Natural
1400	Deposit	Mid-dark brown soil with <5% small-medium cobbles	1401- 1404					-	-	Topsoil

No.	Type	Description	Over	Under	Fill of	Filled by	Cut by	Finds	Feature	Interpretation
1401	Deposit	Linear, parallel plough marks on NE-SW alignment, consisting of dark brown-black soil	1404	1400				SF 05	14-01	Linear plough marks, same as 902, 1201
1402	Cut	Linear trench cut, 1.05 wide, NW-SE alignment	-	1400		1403		-	14-02	Water main trench
1403	Deposit	Very mixed re-deposited dark brown soil and sandy gravel subsoil	1404	1400	1402			-	14-02	Re-deposited fill of water main trench
1404	Deposit	Dark orange-brown sandy silty gravel		1401-1403				-	-	Natural
1500	Deposit	Mid-dark brown gravelly soil, <2% small-medium stones	1501-1503					-	-	Topsoil
1501	Cut	Linear field drain, 1.0 wide, NW-SE alignment	-	1500		1502		-	15-01	Field drain
1502	Deposit	Small-medium subangular stones and loose soil fill	1503	1500	1501			-	15-01	Fill of field drain
1503	Deposit	Alternating dark orange-brown-yellow soily sand to grey-white clay in deep centre to grey-white sand to dark orange sandy gravel		1500				-	-	Natural

APPENDIX 4: Drawings

No.	Scale	Description	Context	Feature	Drawn By	Date
1	1:10	Field drain, WSW-facing section	101, 102	1-01	MKP	28/07/2010
2	1:10	Plough mark, SE-facing section	103	1-02	MKP	28/07/2010
3	1:10	Plough mark, SE-facing section	104	1-03	MKP	28/07/2010
4	1:10	Soil deposit, WSW-facing section	105	1-04	MKP	28/07/2010
5	1:10	Field drain, ENE-facing section	203, 204	2-02	MKP	28/07/2010
6	1:10	Field drain, SSE-facing section	201, 202	2-01	MKP	28/07/2010
7	1:10	Soil surface, SE-facing section	205	2-03	MKP	28/07/2010
8	1:10	Soil deposit, SE-facing section	208	2-05	MKP	28/07/2010
9	1:10	Plough mark, E-facing section	303	3-03	MKP	28/07/2010
10	1:10	Field drain, ENE-facing section	607, 608	6-04	MKP	28/07/2010
11	1:10	Ditch, NE-facing section	609, 610	6-05	MKP	28/07/2010
12	1:10	Plough mark, N-facing section	703	7-02	MKP	28/07/2010
13	1:10	Plough mark, ENE-facing section	401	4-01	LF	29/07/2010
14	1:10	Field drain, E-facing section	402, 403	4-02	LF	29/07/2010
15	1:10	Plough-mark, SSE-facing section	801	8-01	LF	29/07/2010
16	1:10	Plough mark, SW-facing section	901	9-01	LF	29/07/2010
17	1:10	Plough marks, SW -facing section	902	9-02	LF	29/07/2010
18	1:10	Plough marks, SW -facing section		14-01	LF	29/07/2010
19	1:10	Soil redeposit, NE-facing	1101	11-01	LF	29/07/2010
20	1:10	Field drain, E-facing section	1003, 1004	10-02	LF	29/07/2010
21	1:10	Field drain, N-facing section	1301, 1302	13-01	LF	29/07/2010
22	1:10	Field drain, disturbed, SE-facing section	1501, 1502	15-01	LF	29/07/2010

APPENDIX 5: Finds

No.	Type	Description	Date	Context	Feature
SF01	Stone	Possible quern stone rough-out, granite; recovered from T1 topsoil	Unknown, possibly prehistoric	100	-
SF 02	Stone	Pebble tool, wear on two faces suggesting use as whetstone; from T2 topsoil	Unknown, possibly prehistoric	200	-
SF 03	Fe	1x lump iron slag from field drain 2-01 redeposit	Unknown	202	2-01
SF 04	Fe	Elongated iron tool with one smoothed end showing polished wear	Unknown, possibly late Medieval	900	-
SF 05	Ceramic	1x frag cream and brown glazed earthenware pot	Possibly late Medieval	1401	14-01

APPENDIX 6: Photographs

Photo No.	Camera Position	Direction (facing)	Location	Features	Comments	Date	Taken by
1	Centre of site	N	Spoil mound, centre of site	-	Site prior to trial trenching - showing development work already in progress	25/07/2010	MKP
2	Centre of site	NW	Spoil mound, centre of site	-	Site prior to trial trenching - showing development work already in progress		MKP
3	S site border	NW	Site from S border	-	Site prior to trial trenching - showing development work already in progress		MKP
4	NH 7712 8145	SW	SW corner of site	-	Site prior to trial trenching -view over builders' spoil mound		MKP
5	W end T1	ENE	W end of T1	1-01, 1-02, 1-03	Trench 1 (T1), showing Features 1-01, 1-02 and 1-03 in foreground	26/07/2010	MKP
6	W end T1	ENE	W end of T1	1-01, 1-02, 1-03	T1 features: 1-01 (alongside ranging pole), 1-02 (in front) and 1-03 (in back)	26/07/2010	MKP
7	NH 77134 81447	NNW	Feature 1-04	1-04	Feature 1-04, black silty soil deposit	26/07/2010	MKP
8	NH 77136 81448	NW	Feature 1-05	1-05	Feature 1-05, black silty soil deposit	26/07/2010	MKP
9	E end T1	WSW	E end of T1	1-04, 1-05	Trench 1, showing Feature 1-05 in front and Feature 1-04 in back	26/07/2010	MKP
10	NH 77126 81441	SE	W end of T1	1-01, 1-02	Sections through Feature 1-02 (to left) and Feature 1-01 (to right)	26/07/2010	MKP
11	NH 77126 81441	NNW	W end of T1	1-01, 1-02	Sections through Feature 1-02 (top) and Feature 1-01 (drain pipe visible) showing field drain cuts through plough mark	26/07/2010	MKP

Photo No.	Camera Position	Direction (facing)	Location	Features	Comments	Date	Taken by
12	NH 77126 81441	NNW	W end of T1	1-01, 1-02	Sections through Feature 1-02 (top) and Feature 1-01 (drain pipe visible); note mixed nature of Feature 1-02 (plough mark) redeposit	26/07/2010	MKP
13	NH 77126 81442	N	W end of T1	1-03	Feature 1-03, plough mark, showing section	26/07/2010	MKP
14	NH 77134 81447	NE	E end of T1	1-04	Feature 1-04, natural black silty soil deposit, after section excavated	26/07/2010	MKP
15	S end T2	NNW	Trench 2	-	Trench 2 facing N	26/07/2010	MKP
16	S end T2	NW	Trench 2	-	Trench 2, Feature 2-03 clearly visible in centre of trench with Feature 2-05 visible in front	26/07/2010	MKP
17	N end T2	SSE	S end of T2	2-01, 2-02	Feature 2-01 running along trench edge to left, Feature 2-02 crossing trench in top right of photo	26/07/2010	MKP
18	NH 77150 81456	WNW	Centre of T2, Feature 2-03	2-03	Feature 2-03, dark brown loamy deposit	26/07/2010	MKP
19	NH 77153 81454	WSW	S end of T2	2-04, 2-05	Feature 2-04, field drain, cutting through Feature 2-05, soil deposit	26/07/2010	MKP
20	S end T2	W	S end of T2	2-06	Feature 2-06, ard-marks / plough marks	26/07/2010	MKP
21	S end T2	NW	S end of T2	2-05	Soil deposit 2-05, S-facing section; Field drain 2-04 visible cutting through N side of feature	26/07/2010	MKP
22	NH 77150 81456	NW	Centre of T2, Feature 2-03	2-03	Feature 2-03, dark brown loamy deposit, after section; showing S-facing section	26/07/2010	MKP
23	NH 77150 81456	W	Centre of T2, Feature 2-03	2-03	Feature 2-03, dark brown loamy deposit, after section excavation	26/07/2010	MKP
24	N end T2	N	N end of T2	2-01, 2-02	Field drain 2-01 running along trench edge and field drain 2-02 crossing trench to left	27/07/2010	MKP

Photo No.	Camera Position	Direction (facing)	Location	Features	Comments	Date	Taken by
25	NH 77144 81463	NNW	N end of T2	2-02	Field drain 2-02 after sectioning to reveal orange ceramic drain pipe; Feature 2-01 to right clearly cuts through 2-02	27/07/2010	MKP
26	NH 77144 81463	E	N end of T2	2-01	Field drain 2-01 after sectioning to reveal gravel filled drain and black plastic drain pipe	27/07/2010	MKP
27	W end T3	SSE	W end of T3	3-02, 3-03	Plough mark 3-03 to right and field drain 3-02 adjacent to left-showing the start of the field drain trench within T3; both features cut through earlier ard-marks aligned NE-SW	27/07/2010	MKP
28	NH 77138 81479	NE	Centre of T3	3-01	Ard-marks 3-01 aligned NE-SW	27/07/2010	MKP
29	W end T3	ENE	W end of T3	-	Overlooking Trench 3	27/07/2010	MKP
30	W end T3	N	W end of T3	3-03	Plough mark 3-03 after sectioning	27/07/2010	MKP
31	S end T6	NNW	S end of T6	6-01, 6-03	Overlooking Trench 6, Field drain 6-03 in foreground and field drain 6-01 running diagonally across T6	27/07/2010	MKP
32	NH 77127 81485	NW	S end of T6	6-01, 6-02	Field drain 6-01 most prominent across T6, with field drain 6-02 barely visible parallel to trench edge on right side of trench	27/07/2010	MKP
33	NH 77119 81489	W	N end of T6	6-04	Field drain 6-04, clearly showing gravel-filled drain 6-01 cutting W end of the feature	27/07/2010	MKP
34	Centre of site	SE	Trench 6	-	Overlooking Trench 6 across SE corner of site	27/07/2010	MKP
35	NH 77118 81491	WSW	N end of T6	6-05	Ditch feature 6-05	27/07/2010	MKP
36	NH 77118 81491	SW	N end of T6	6-05	Ditch feature 6-05	27/07/2010	MKP

Photo No.	Camera Position	Direction (facing)	Location	Features	Comments	Date	Taken by
37	NH 77118 81491	WNW	N end of T6	6-05	E-facing section of ditch 6-05	27/07/2010	MKP
38	NH 77166 81460	SW	Trench 4 features	4-01, 4-02, 4-03	Field drain 4-03 parallel to trench, cutting field drain 4-02 to right and plough mark 4-01 to left	27/07/2010	LF
39	NH 77163 81458	WSW	W end of T4	4-03	Field drain 4-03 after sectioning, showing ENE-facing section	27/07/2010	LF
40	NH 77138 81479	N	Centre of T4	4-01	Plough mark 4-01 after sectioning, showing S-facing section	27/07/2010	LF
41	NH 77166 81460	W	Centre of T4	4-02	Field drain 4-02 after sectioning, showing E-facing section	27/07/2010	LF
42	S end T5	NNW	S end of T5	-	Trench 5, showing waterlogging of trench after rainfall	27/07/2010	MKP
43	N end T5	SSE	N end of T5	5-01	Trench 5, with field drain 5-01 partially exposed at N end of T5; ard-marks visible in centre of trench	27/07/2010	MKP
44	N end T5	N	N end of T5	5-01	Partially exposed field drain 5-01 showing gravel fill and burst black plastic drain pipe	27/07/2010	MKP
45	NH 77162 81481	SE	N end of T5	5-02	Ard-marks N end of T5	27/07/2010	MKP
46	NH 77166 81475	WSW	S end of T5	5-03	Field drain 5-03, rapidly filling with water after rainfall	27/07/2010	MKP
47	NH 77138 81485	WSE	S end of T7	7-01	Field drain 7-01, waterlogged	27/07/2010	MKP
48	NH 77134 81491	N	Centre of T7	7-02	Plough mark 7-02	27/07/2010	MKP
49	NH 77132 81495	W	N end of T7	7-03	Field drain 7-03	27/07/2010	MKP
50	N end T7	SE	N end of T7	-	Trench 7 facing south	27/07/2010	MKP

Photo No.	Camera Position	Direction (facing)	Location	Features	Comments	Date	Taken by
51	NH 77119 81489	WSW	N end of T6	6-04	Field drain 6-04, after sectioning, showing orange ceramic drain pipe	27/07/2010	MKP
52	NH 77134 81491	S	Centre of T7	7-02	N-facing section of plough mark 7-02	27/07/2010	MKP
53	S end T8	N	S end of T8	-	Trench 8	27/07/2010	MKP
54	N end T8	N	N end T8	8-01	Plough mark 8-01	27/07/2010	MKP
55	NH 77140 81522	ENE	Centre of T8	8-02	Field drain 8-02	27/07/2010	MKP
56	NE end T9	W	NE end of T9	9-01	Plough mark 9-01	27/07/2010	MKP
57	Centre of T9	SE	S half of T9	9-02	Parallel plough marks 9-02, NE-SW alignment	27/07/2010	MKP
58	SW end T9	N	SW end of T9	9-02	Trench 9, facing N	27/07/2010	MKP
59	NW end T10	SE	NW end of T10	-	Trench 10, facing SE	27/07/2010	MKP
60	SE end T10	S	SE end of T10	10-01, 10-02	Field drain 10-01 in centre of photo, clearly cutting through field drain 10-02	27/07/2010	MKP
61	NH 77114 81514	W	Centre of T11	11-01	Soil deposit 11-01	27/07/2010	MKP
62	E end T11	W	E end of T11	-	Trench 11 facing W	27/07/2010	MKP
63	E end T12	WSW	E end of T12	12-01	Parallel plough marks 12-01 on NE-SW alignment	27/07/2010	MKP
64	NE end T13	WSW	NE end of T13	13-01	Field drain 13-01	27/07/2010	MKP
65	NE end T13	WSW	NE end of T13	13-01	Trench 13 facing westward	27/07/2010	MKP
66	NW half of T14	NE	NW half of T14	14-01	Parallel plough marks 14-01, NE-SW alignment	27/07/2010	MKP

Photo No.	Camera Position	Direction (facing)	Location	Features	Comments	Date	Taken by
67	NW end T14	SSE	NW end of T14	14-01	Trench 14, northernmost section, facing SSE	27/07/2010	MKP
68	SE half T14	SE	SE half of T14 northern section	14-02	Water main trench 14-02, parallel to trench edge	27/07/2010	MKP
69	N end T8	N	N end of T8	8-01	Plough mark 8-01 after sectioning	28/07/2010	LF
70	NE end T9	E	NE end of T9	9-01	Plough mark 9-01, E-facing section	28/07/2010	LF
71	NH 77122 81511	SE	SW end of T9	9-02	Two plough marks from 9-02 prior to sectioning	28/07/2010	LF
72	NH 77122 81511	SE	SW end of T9	9-02	Two plough marks from 9-02 after sectioning, SW-facing	28/07/2010	LF
73	NH 77114 81514	WNW	Centre of T11	11-01	NE-facing section of soil deposit 11-01	28/07/2010	LF
74	NH 77102 81505	WNW	SE end of T10	10-02	E-facing section of field drain 10-02 showing orange ceramic drain pipe	28/07/2010	LF
75	NE end T13	E	NE end of T13	13-01	Field drain 13-01	28/07/2010	LF
76	NE end T13	SW	NE end of T13	13-01	NE facing section of field drain 13-01	29/07/2010	LF
77	NH 77092 81464	SE	Centre of T14	14-01	Two plough marks from 14-02 prior to sectioning, one ceramic sherd <i>in situ</i>	29/07/2010	LF
78	NH 77092 81464	NE	Centre of T14	14-01	Two plough marks from 14-02 after sectioning; SW-facing sections	29/07/2010	LF
79	NH 77108 81455	NE	W end of T15	15-01	Field drain 15-01	29/07/2010	LF
80	NH 77108 81455	WNW	W end of T15	15-01	ESE-facing section of field drain 15-01	29/07/2010	LF

Photo No.	Camera Position	Direction (facing)	Location	Features	Comments	Date	Taken by
81	NH 77108 81455	WNW	W end of T15	15-01	ESE-facing section of field drain 15-01	29/07/2010	LF
82	-	-	SF 04	T9	Elongated, iron tool with one rounded/smoothed end (to left) showing polished wear	06/08/2010	MKP
83	-	-	SF 04	T9	Elongated iron tool showing rounded end and polished wear	06/08/2010	MKP
84	-	-	SF 02	T2	Granite pebble tool, possible whetstone; showing one worked face	06/08/2010	MKP
85	-	-	SF 02	T2	Granite pebble tool, possible whetstone; showing both worked faces	06/08/2010	MKP
86	-	-	SF 02	T2	Granite pebble tool, possible whetstone; showing both worked faces	06/08/2010	MKP
87	-	-	SF 01	T1	Possible quern stone rough-out, granite; recovered from T1 topsoil	06/08/2010	MKP
88	-	-	SF01	T1	Possible quern stone rough-out, granite; recovered from T1 topsoil	06/08/2010	MKP
89	-	-	SF 05	14-01	1x frag cream and brown glazed earthenware pot	06/08/2010	MKP
90	-	-	SF 03	2-01	1x lump iron slag from field drain 201 redeposit	06/08/2010	MKP

APPENDIX 7: Section Drawings

