

Photo 1: The retort house and gasholder pit, from the east (film 1, frame 5)



Photo 2: The retort house and gasholder pit, from the east (film 2, frame 2)



Photo 3: The retort house and gasholder pit, from the south (film 1, frame 1)



Photo 4: The retort house, from the south (film 1, frame 10)





Photo 5: The retort house, from the south-east (film 3, frame 11)



Photo 6: The retort house with repaired chimney, from the north (film 1, frame 7)



Photo 7: Detail of ridge ventilator to retort house, from the south (film 1, frame 13)

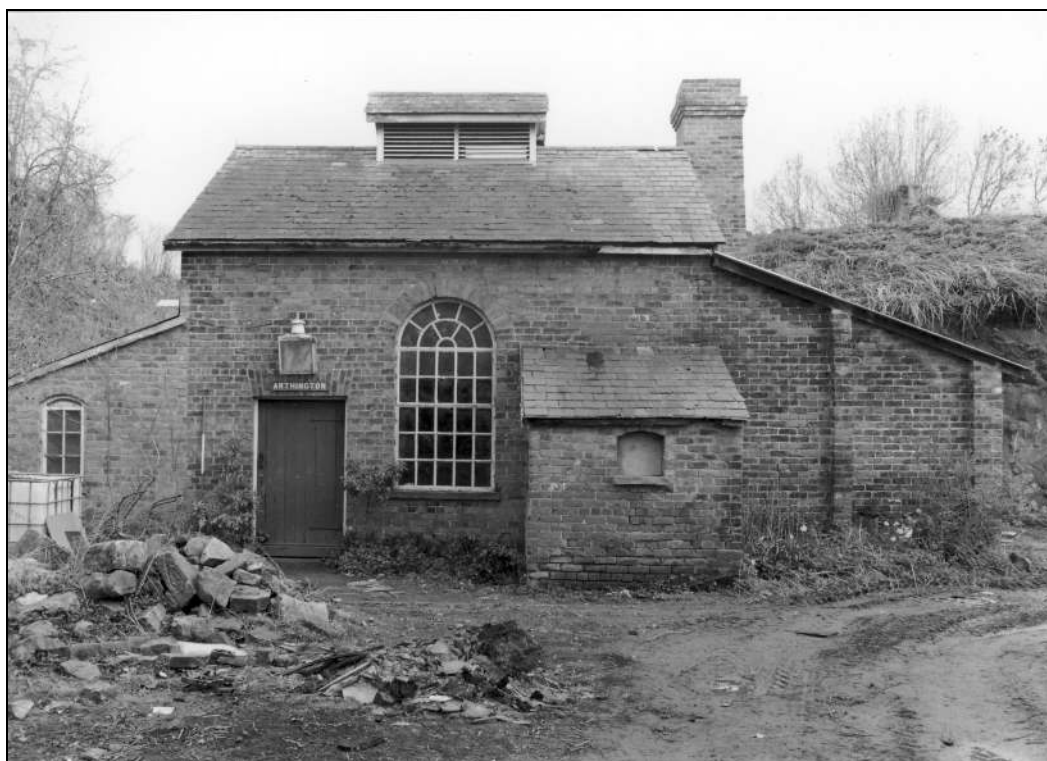


Photo 8: The retort house, from the south-east (film 1, frame 2)



Photo 9: The retort house, from the south (film 1, frame 4)

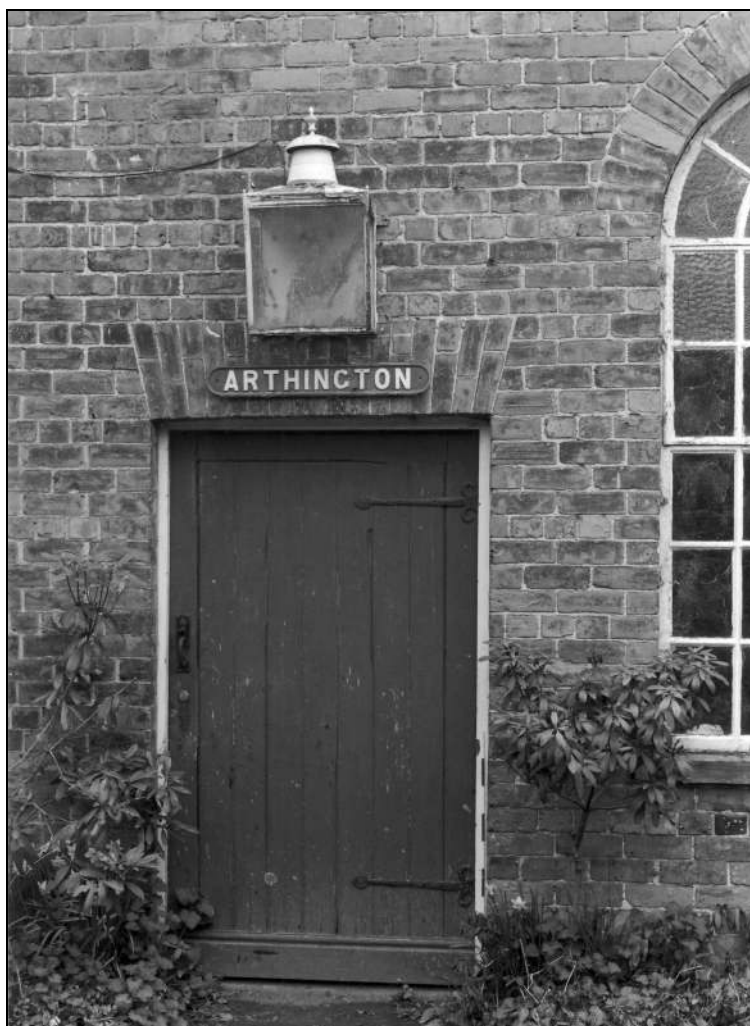


Photo 10: The retort house: detail of original doorway (film 1, frame 18)



Photo 11: The retort house: detail of original window (film 2, frame 1)



Photo 12: The retort house: north-west elevation (film 2, frame 18)



Photo 13: The retort house: altered window in north-west elevation (film 3, frame 2)

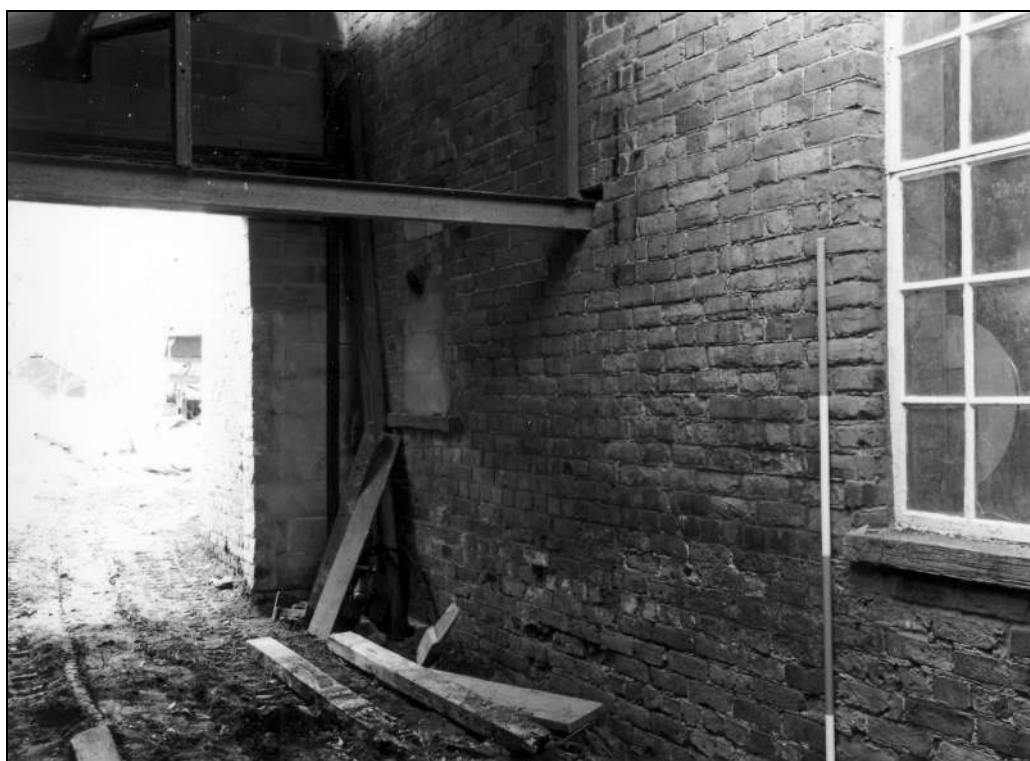


Photo 14: The retort house: north-west elevation (film 3, frame 1)





Photo 15: The retort house: interior, from the north-east (film 3, frame 9)



Photo 16: The retort house: modern opening in north-east gable (film 3, frame 10)



Photo 17: The retort house: interior, from the south (stove in approximate location of retorts) (film 2, frame 4)

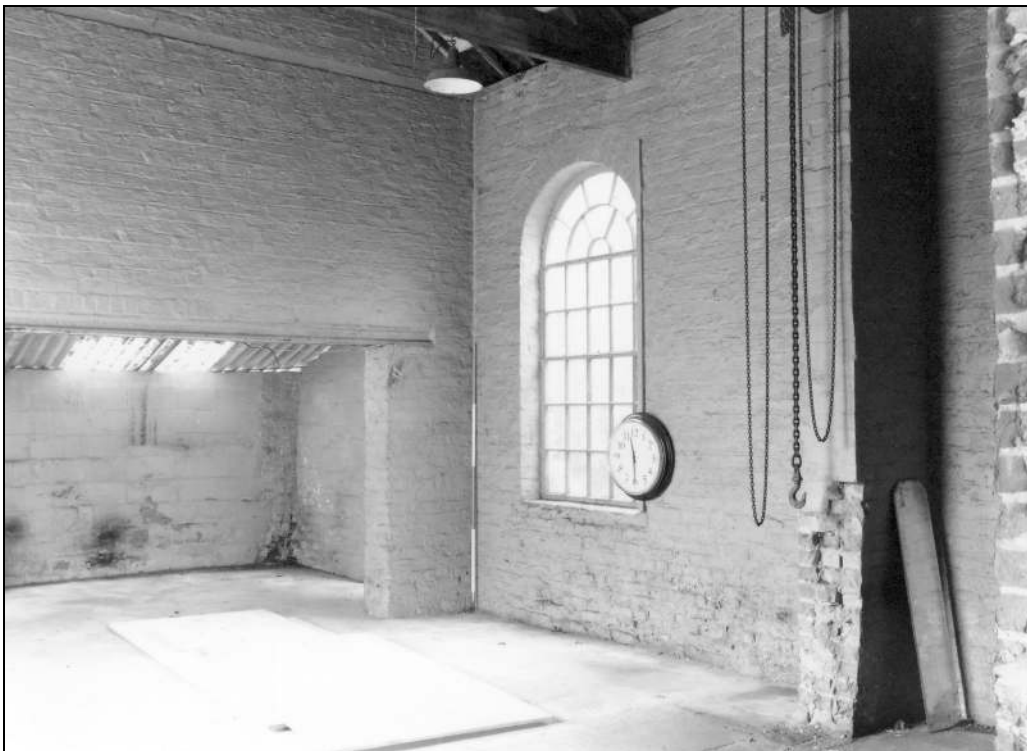


Photo 18: The retort house: interior, from the east (film 2, frame 8)

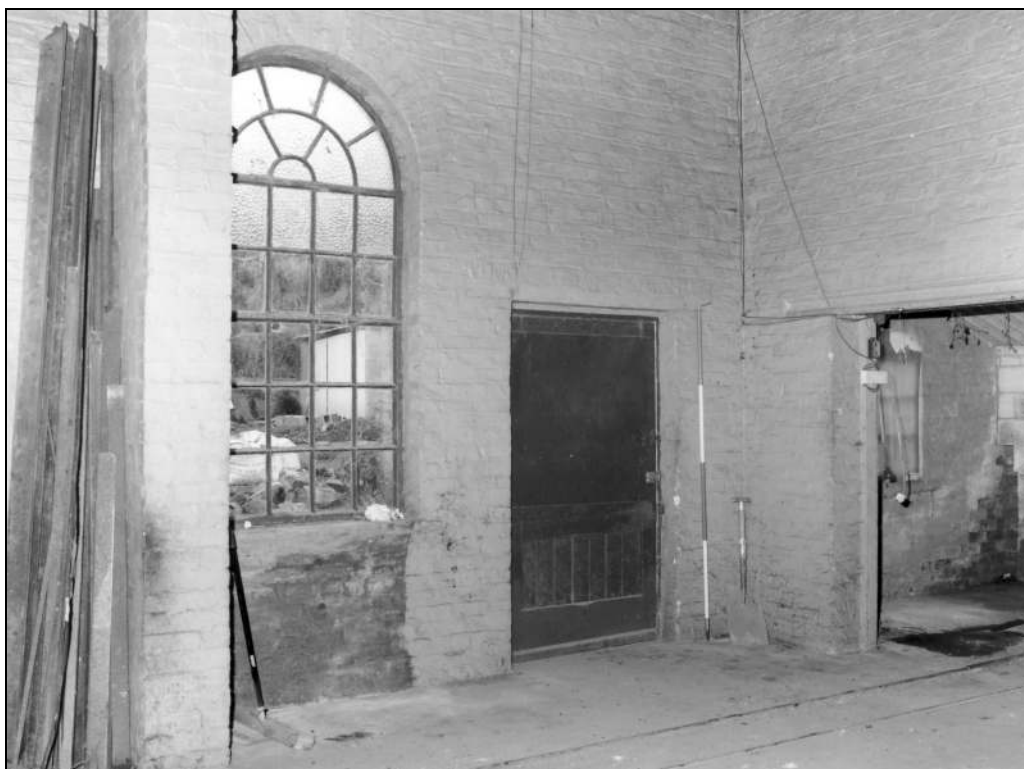


Photo 19: The retort house: interior, from the north (film 2, frame 7)



Photo 20: The retort house: interior, from the west (film 2, frame 5)



Photo 21: The retort house: former location of retorts, from the south-east (film 2, frame 10)





Photo 22: The retort house: inserted opening into south-east lean-to (film 2, frame 6)



Photo 23: The retort house: roof truss, from the east (film 2, frame 11)



Photo 24: The retort house: roof truss and ridge vent, from the west (film 2, frame 12)



Photo 25: The retort house: south-east lean-to (film 1, frame 14)



Photo 26: The retort house: interior of south-east lean-to (film 3, frame 7)



Photo 27: The retort house: detail of brickwork in south-east elevation (film 1, frame 16)



Photo 28: The retort house, from the north-east, showing gable lean-to (film 1, frame 6)



Photo 29: The retort house: interior of north-east lean-to, from the north-west (film 3, frame 5)





Photo 30: The retort house: interior of north-east lean-to, from the south (film 3, frame 4)



Photo 31: The retort house: interior of north-east lean-to, showing modern roof (film 3, frame 6)



Photo 32: The retort house: interior of modern south-west lean-to, from the north-west (film 2, frame 14)



Photo 33: The retort house: interior of modern south-west lean-to, from the south-east (film 2, frame 16)



Photo 34: The retort house, from the north-west, showing rebuilt top of chimney (film 1, frame 8)



Photo 35: Detail of flue from retort house to chimney (film 2, frame 17)



Photo 36: Gasholder pit, from the south-west (film 1, frame 11)



Photo 37: Gasholder pit, from the south-west (film 1, frame 12)





Photo 38: Gasholder pit: detail of brick lining with stone block, from the south (film 1, frame 17)