

School House
Main Street, Ripley, North Yorkshire:
Historic Building Record



July 2011

STEPHEN HAIGH

B u i l d i n g s A r c h a e o l o g i s t

11 Browcliff Silsden Keighley West Yorkshire BD20 9PN

Tel/Fax: 01535 658925 Mobile: 07986 612548

www.stephenhaigh.co.uk enquiries@stephenhaigh.co.uk

This report is formatted to allow printing on both sides of the paper

School House

Main Street, Ripley, North Yorkshire:

Historic Building Record

CONTENTS

List of photographs.....	overleaf
1 Introduction	1
2 Location and current use.....	1
3 Planning background.....	1
4 Historical background.....	2
5 Recording methodology.....	2
6 Description of the building	3
7 Conclusion	4
Appendix 1: Contents of the project archive.....	5

Figures:

- 1: Location maps
- 2: Extract from OS 1:2500 map, c.1890
- 3: Ground floor plan with key to photographs

Photographs

SUMMARY

School House, in Ripley (NGR: SE 2844360612), was built in about 1830 to house the school master in this model village owned by the Ingilby estate, and now serves as part of the village primary school. Recording of the ground floor was carried out in July 2011 for the School Governing Body, to fulfil a condition of listed building consent for alterations.

July 2011

STEPHEN HAIGH

B u i l d i n g s A r c h a e o l o g i s t

11 Browcliff Silsden Keighley West Yorkshire BD20 9PN

Tel/Fax: 01535 658925 Mobile: 07986 612548

www.stephenhaigh.co.uk enquiries@stephenhaigh.co.uk

SCHOOL HOUSE, MAIN STREET, RIPLEY, NORTH YORKSHIRE:

HISTORIC BUILDING RECORD

LIST OF PHOTOGRAPHS

Photo	Subject
1	Front elevation
2	Rear elevation
3	Rear doorway
4	Entrance hall, looking towards the rear
5	Entrance hall, looking towards the front
6	The staircase
7	Rear part of hallway, looking to the front door
8	Doorway to north front room
9	Doorway to south front room
10	Rear of door to north front room
11	Detail of lion's head boss on architrave, north front room
12	Arched recess, north front room
13	Front window, north front room
14	Front window, north front room, with shutters closed
15	South front room
16	Blocked window, north side of rear south room
17	Rear, north room

SCHOOL HOUSE, MAIN STREET, RIPLEY, NORTH YORKSHIRE:

HISTORIC BUILDING RECORD

1 Introduction

- 1.1 This report presents the results of historic building recording of School House (part of the Ripley Endowed Church of England Primary School), in Ripley, North Yorkshire. The work was commissioned by the School Governing Body, and carried out in July 2011, to discharge a condition attached to listed building consent for alterations to the building.
- 1.2 Ripley is an estate village laid out by Sir William Amcotts Ingilby, and the School House was built about 1830 as accommodation for the village school master. It comprises a two storey house in character with the rest of the village, but has been altered at the rear and its interior adapted to form part of the school's teaching area.
- 1.3 The scope of the recording was specified in the planning condition from Harrogate Borough Council, and concentrated on the ground floor of the building where minor alterations are to take place. This report will be submitted to the council and client, as well as to the North Yorkshire Historic Environment Record, and will also be published on the internet via the Oasis Project. The project archive will be deposited with the North Yorkshire County Record Office.

2 Location and current use

- 2.1 Ripley lies about 5km north of Harrogate on the north side of the River Nidd, and Main Street forms the thoroughfare through the village, on the west side of which the School House stands, opposite the town hall or *Hotel de Ville*. The NGR for the site is SE 28443 60612 and the postcode is HG3 3AY; see figure 1. The ground floor of the building now forms part of the school teaching area but the first floor is let as private accommodation and was not inspected during this survey.

3 Planning background

- 3.1 The School House is listed (grade II) as a building of special architectural or historic interest, national heritage list number 1296028. The description in the list is as follows:

House. Probably 1830. Part of the estate village for Sir William Amcotts Ingilby. Coursed squared gritstone, grey slate roof. 2 storeys, 3 bays, the central bay breaking forward slightly and containing a deeply recessed 3-panel door with interlaced glazing bars to pointed overlight in a moulded surround with crocketed

ogee door-head. Flat-headed chamfered mullioned windows of two 4-centred arched lights containing 8-pane casements; hoodmoulds over. Pilaster strips to each corner. Moulded eaves cornice and low blocking course. Hipped roof with corniced stacks flanking ridge. Similar in style to Church View, Market Place (qv) and Town Hall Cottages, this house has more architectural features, such as pilaster strips and the crocketed door-head, which link it with the Castle and the Church and reflect the prestige of the schoolmaster within the village community.

- 3.2 Listed building consent for various alterations to the School House was granted by Harrogate Borough Council on 28 February 2011 (application number 6.75.58.M.LB), with a condition attached (number 3), which this report addresses, and which requires that:

No development shall commence until the listed building has been recorded in its present state in line with the "Level 2" requirements in English Heritage's "Understanding Historic Buildings" guidance (2006) and a copy of the record has been submitted to and approved in writing by the Local Planning Authority. A second copy shall be submitted to the North Yorkshire Historic Environment Record (HER), which is administered by North Yorkshire County Council. The record shall be limited to the interior of School House, with a particular focus on the fabric and rooms affected by the proposed alterations.

4 Historical background

- 4.1 The village of Ripley was rebuilt in its present form during the 19th century by the then owner of Ripley Castle, Sir William Amcotts Ingilby, whose family had held it since the 14th century and whose descendants continue to live there today. It was laid out as a model village, although not in a single phase, and as a consequence architectural styles vary somewhat.
- 4.2 The School House, which would have been the home of the school master and his household, stands to the north of the school itself, established by Mary Ingilby in 1702 but rebuilt in 1830, according to an inscription on it. It is assumed that the School House was built at the same time, although it appears to have been extended to the rear at some time. The Ordnance Survey map of c.1890 shows the building largely as it is at present, but without the single storey outbuilding on the north side of the yard (figure 2).

5 Recording methodology

- 5.1 The recording was carried out on 13 July 2011 and involved external and internal photography of the building, chiefly of those areas to be affected during the alterations, using a digital camera. A duplicate set was also taken using a medium format camera with black and white film, for its archival qualities. The photograph locations are shown on a copy of the ground floor plan, provided by the Pearce Bottomley Architects. All the photographs will be printed to form part

of the project archive; they are also copied in this report, where they are referred to by numbers in **bold**.

6 Description of the building

- 6.1 The School House has a symmetrical façade to Main Street which is loosely both Tudor and Gothic in style, with two-light windows with sunk spandrels, a doorway with crocketed arch, but also pilasters to the quoins which, together with its balanced openings, lend a classical touch (**1**). It is built from the local coursed sandstone used throughout the village and has a slate roof with parapet and moulded eaves cornice. The house is two storeys high and of double depth plan, formed by a U-shaped structural arrangement, and although the original layout to the rear is no longer clear because of what may be later additions, essentially the rear of the building comprises a pair of wings with a recessed entrance between, now altered by the creation of a new rear doorway with window over (**2,3**). The lower part of the south rear wing which extends into the yard might be an original service wing or alternatively an early extension, but the south-facing single storey wing along the north side of the yard is clearly an addition (as its absence from the 1890 map shows).
- 6.2 The front entrance leads into the hallway which runs through to the rear, and has a pair of front rooms and a staircase off, giving a centrally planned circulation typical of the early 19th century, matched by the surviving fixtures and decoration (**4-7**). The two front rooms are of similar size, and although modernised to some degree for their present use, for example by the removal of their fireplaces, a number of original features survive: these include the six panel doors with raised and fielded panels, and the architraves to the north door, which incorporate lion's head bosses (the architraves to the south door have been replaced) (**8-11**). Both rooms have ceiling cornices and arched recesses in the end walls, and walk-in windows with folding shutters (**13-15**), and would probably have been parlours or sitting rooms in the 19th century. The rather steep stairs to the first floor are open string with wave motifs and square balusters to the moulded handrail, scrolled at the base, and lead to a landing overlooking the entrance hall, though this does not form part of the present school and was not inspected
- 6.3 Of the rooms in the rear part of the house, that to the south side has been most radically altered and is entirely modern in appearance. It may have been created from two smaller rooms by the removal of a dividing wall (it seems to have two chimney breasts): it lacks architectural features, though the blocked window in the north side, now facing into the corridor, shows that this was originally an external wall, lying beyond the original rear doorway to the house (**16**). A new staircase has been contrived in the south side, enclosed by modern partitions, to provide what is now the first floor flat with its own entrance. This area may originally have contained the kitchen, with the adjoining outer room in the lower

wing to the south-west perhaps an unheated scullery or larder. The larger rear room, on the north side of the hallway, has moulded cornices which suggest it was a reception rather than a service room, perhaps intended for dining, and it has three wall cupboards among its original features (17).

7 Conclusion

- 7.1 While the general, external appearance of the School House appears to be largely unchanged since its construction in the early 19th century, the building's interior has been altered considerably over its lifetime to suit its use as part of the present primary school, making it impossible fully to understand its original plan and room uses, although a number of significant individual fixtures and decorative fittings survive. The relatively minor alterations to be carried out in 2011 will result in the loss of a small number of these, and this present work provides an archival record to mitigate this.

Appendix 1: Contents of the project archive

To be deposited with the North Yorkshire County Record Office

Archive contains:

- a copy of the report
- full set of colour digital photographs
- full set of black and white photographs and negatives

Complete list of photographs taken (both sets of photographs follow the same series)

Photo	Film	Frame	Subject
1	2	5	Front elevation
2	2	4	Rear elevation
3	1	18	Rear doorway
4	1	3	Entrance hall, looking towards the rear
5	1	1	Entrance hall, looking towards the front
6	1	17	The staircase
7	1	15	Rear part of hallway, looking to the front door
8	1	4	Doorway to north front room
9	1	5	Doorway to south front room
10	1	7	Rear of door to north front room
11	1	9	Detail of lion's head boss on architrave, north front room
12	1	6	Arched recess, north front room
13	1	11	Front window, north front room
14	1	10	Front window, north front room, with shutters closed
15	1	12	South front room
16	1	13	Blocked window, north side of rear south room
17	2	1	Rear, north room

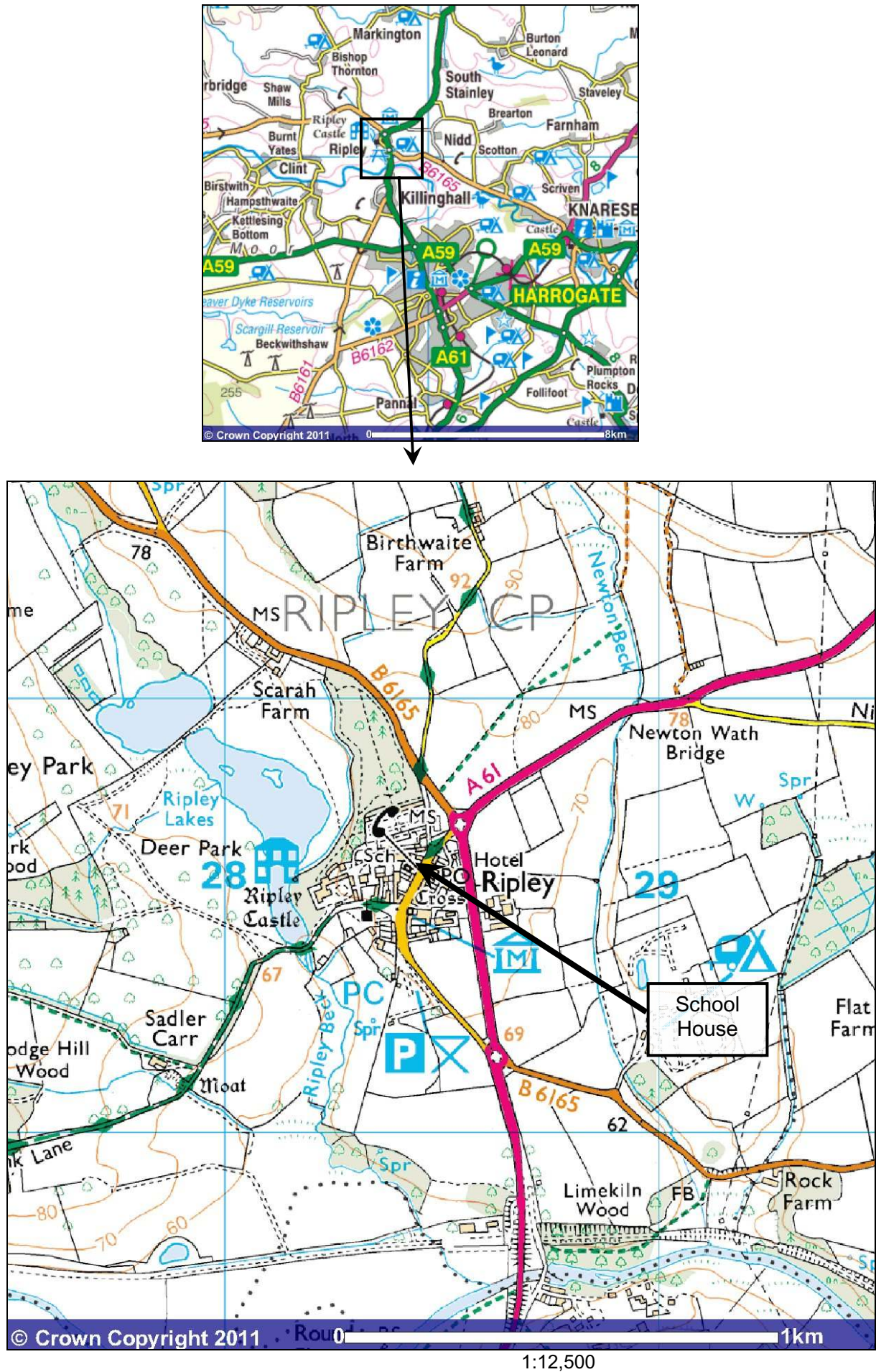


Figure 1: Location maps

Reproduced by permission of Ordnance Survey© on behalf of the Controller of Her Majesty's Stationery Office.
© Crown Copyright. All rights reserved. Licence no: AL100034008

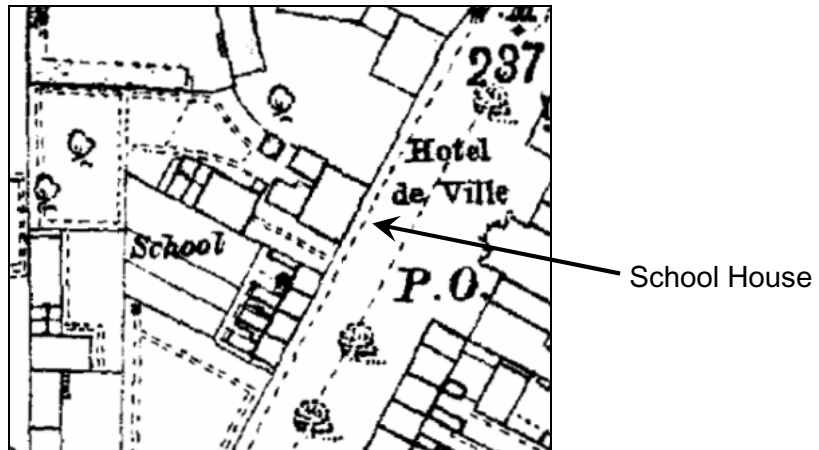
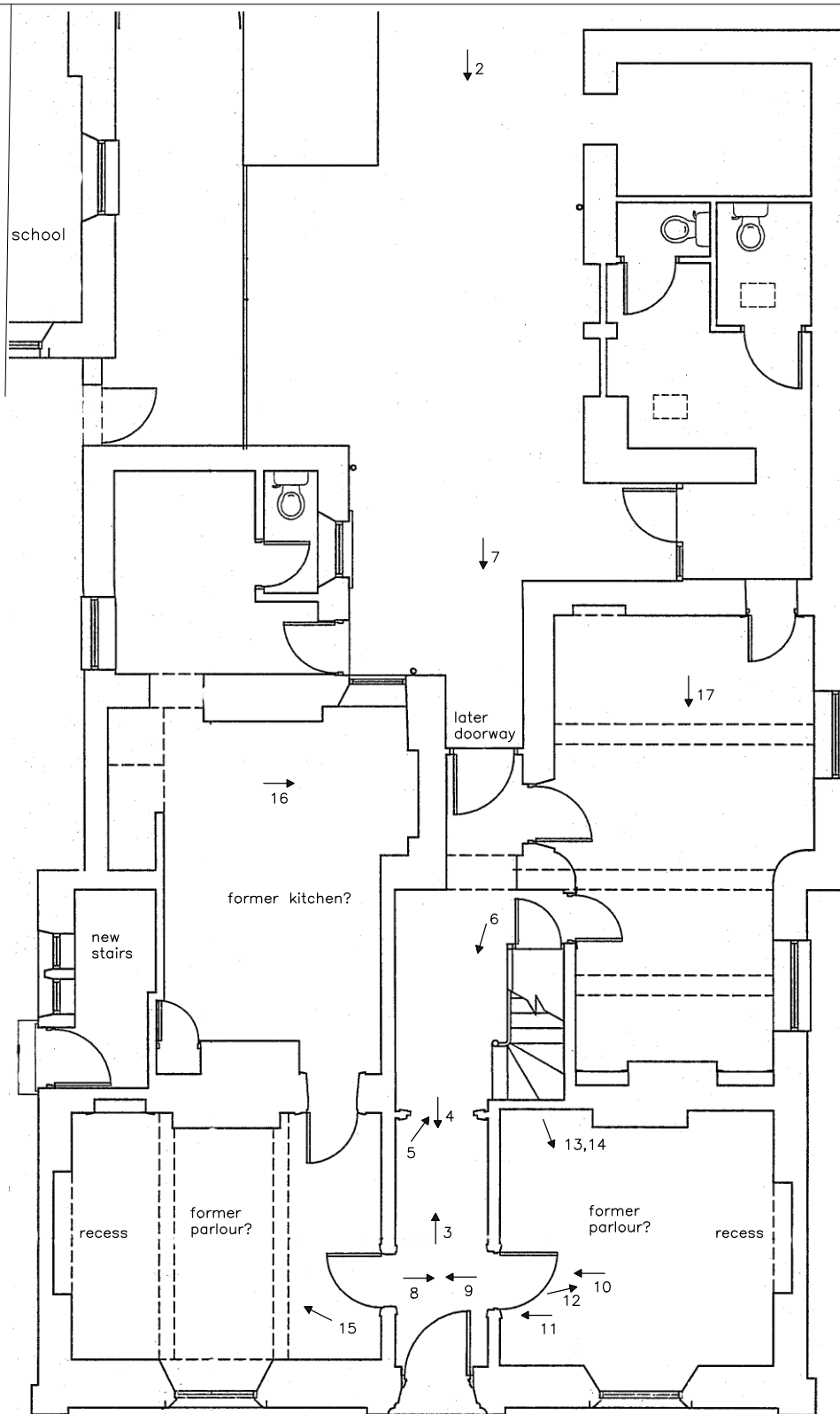


Figure 2: Extract from the Ordnance Survey 1:2500 map, *circa* 1890 (not at original scale)



MAIN STREET

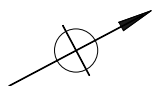
SCHOOL HOUSE
 MAIN STREET
 RIPLEY, NORTH YORKSHIRE
 (NGR: SE 28443 60612)
 HISTORIC BUILDING RECORD

FIGURE 3:
 GROUND FLOOR PLAN
 WITH KEY TO PHOTOGRAPHS

SCALE: 1:100

DATE OF SURVEY: JULY 2011

STEPHEN HAIGH
 Buildings Archaeologist



10m



DRAWING BY PEARCE BOTTOMLEY ARCHITECTS
 ↗ 1: photograph direction and number



Photo 1: Front elevation



Photo 2: Rear elevation



Photo 3: Rear doorway



Photo 4: Entrance hall, looking towards the rear



Photo 5: Entrance hall, looking towards the front

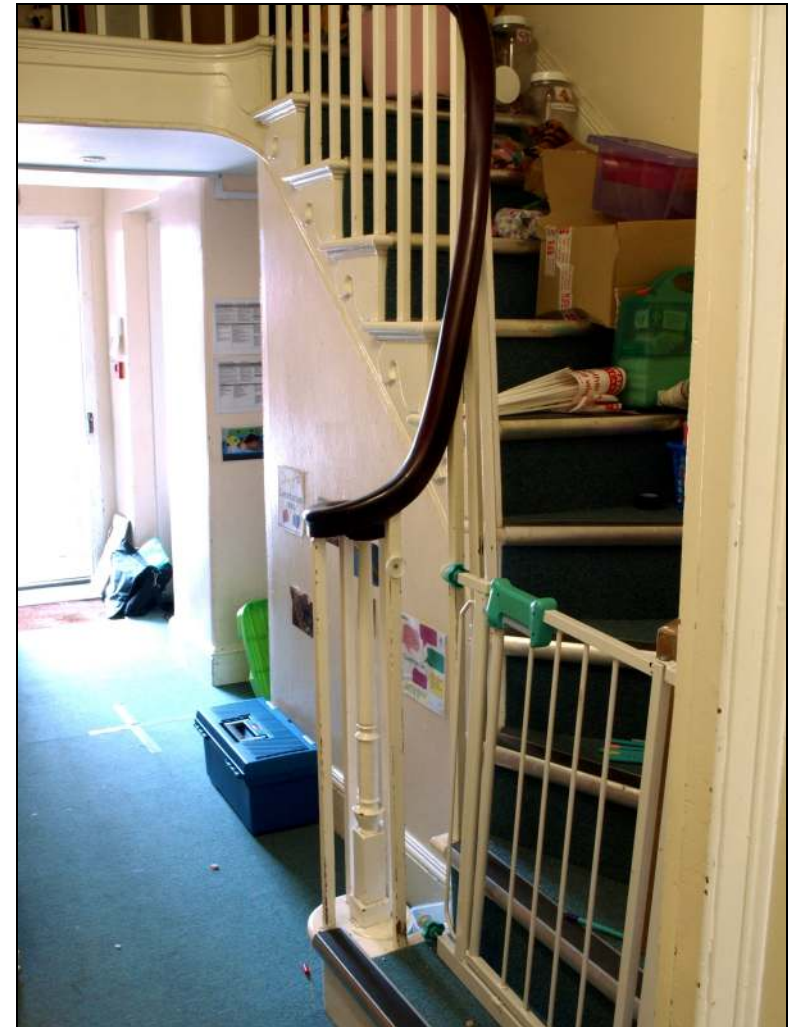


Photo 6: The staircase



Photo 7: Rear part of hallway, looking to the front door



Photo 8: Doorway to north front room

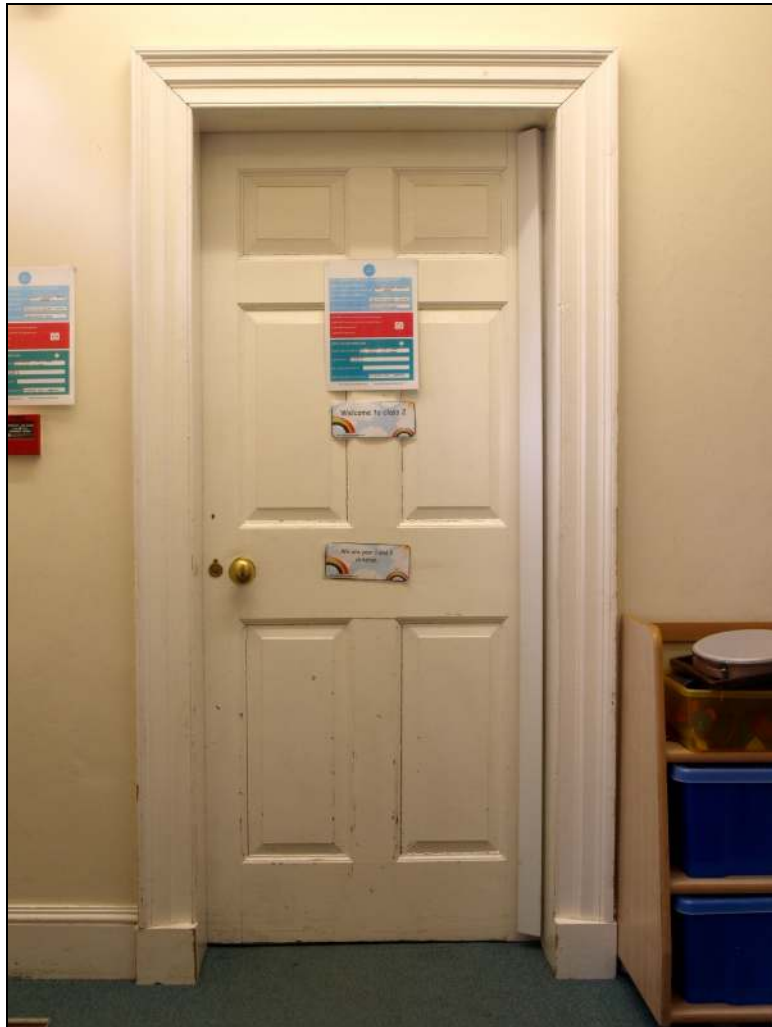


Photo 9: Doorway to south front room

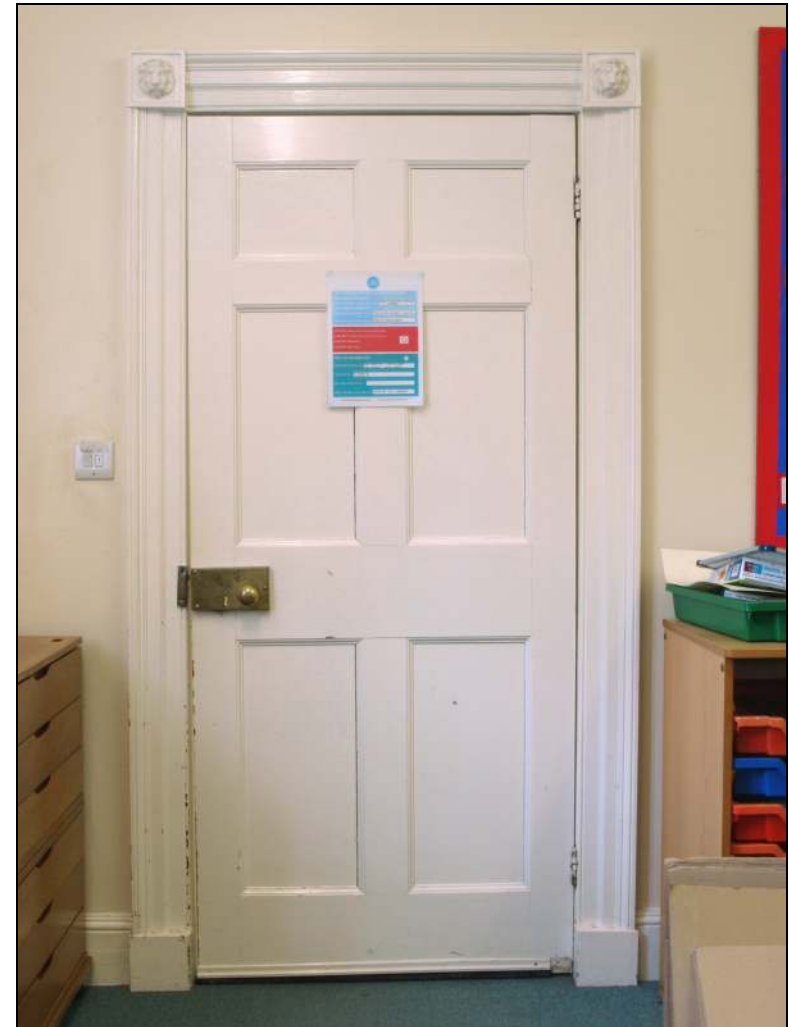


Photo 10: Rear of door to north front room



Photo 11: Detail of lion's head boss on architrave, north front room



Photo 12: Arched recess, north front room



Photo 13: Front window, north front room



Photo 14: Front window, north front room, with shutters closed



Photo 15: South front room



Photo 16: Blocked window, north side of rear south room



Photo 17: Rear, north room

