



Photo 1: General view of the barn, from the east

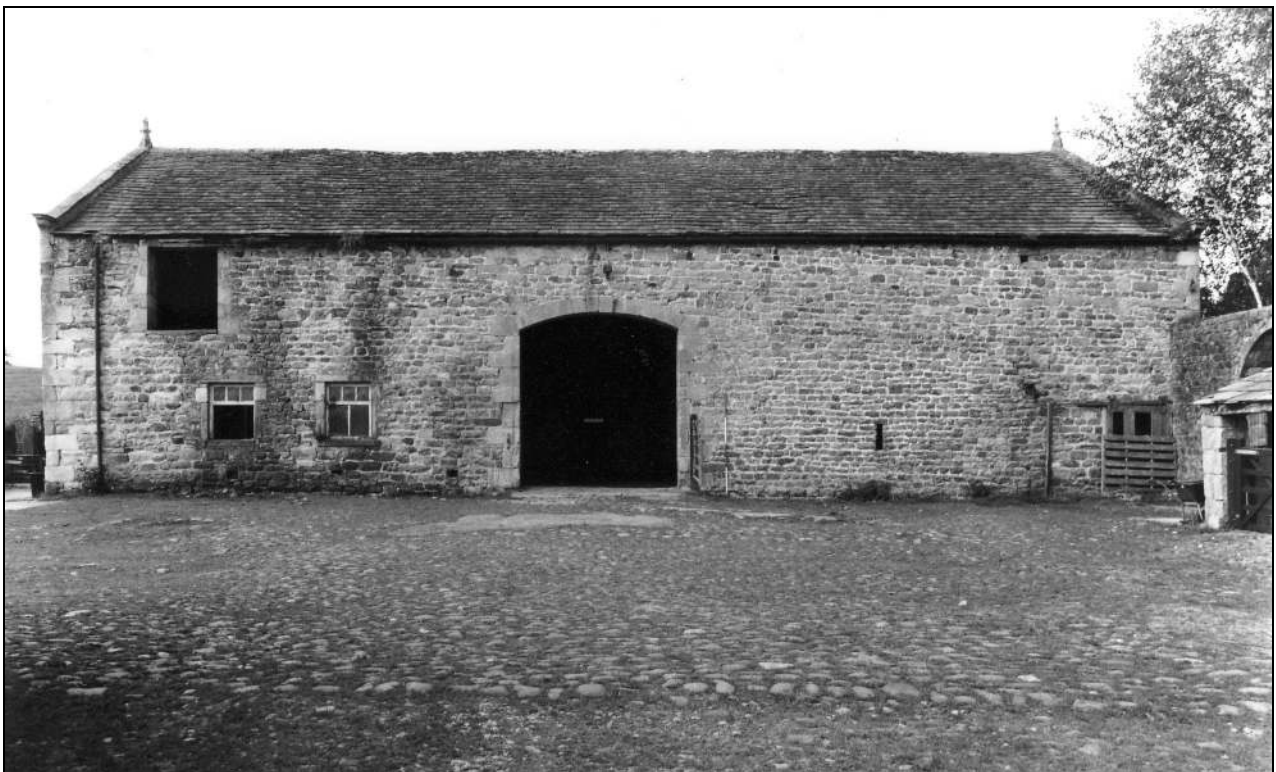


Photo 2: Barn: front elevation



Photo 3: The barn, from the east



Photo 4: The barn, from the north

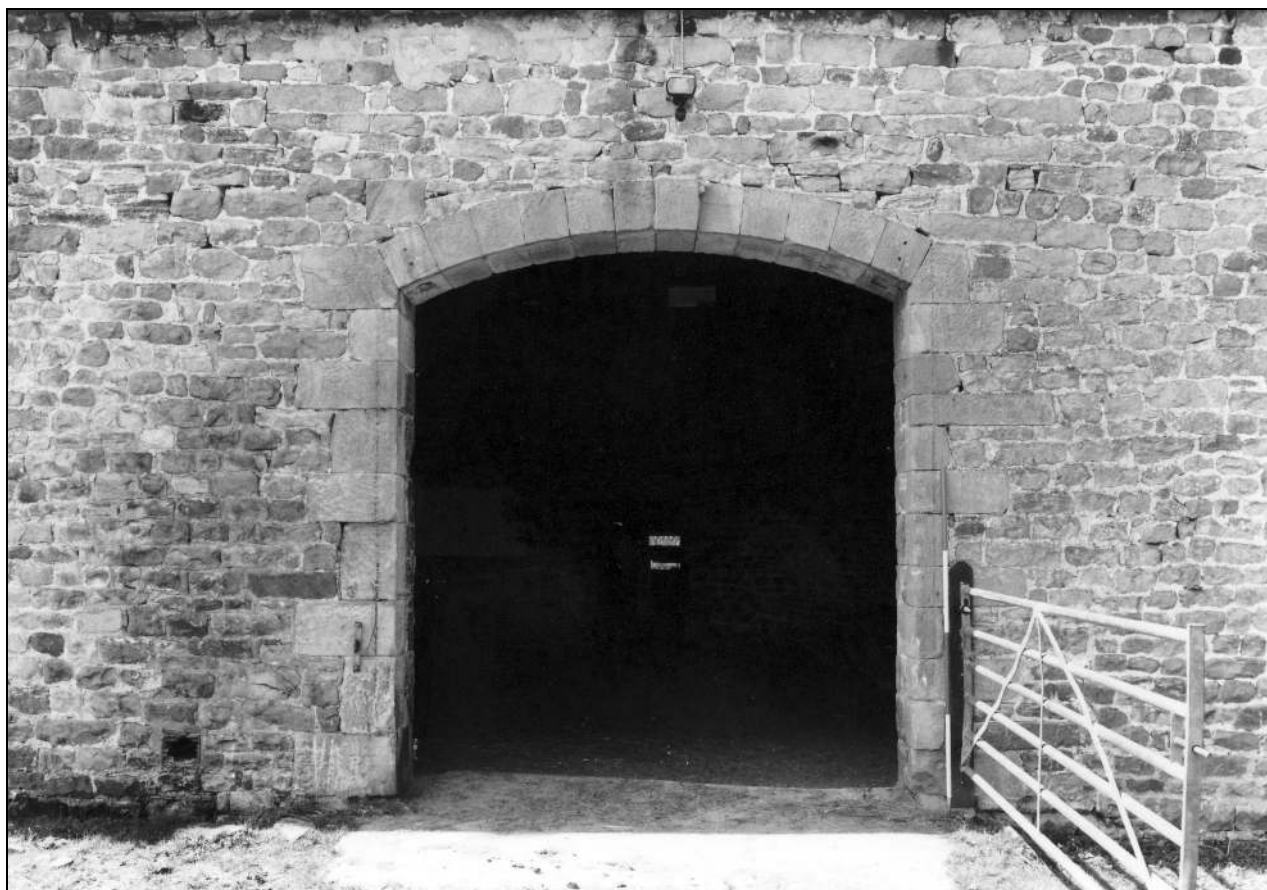


Photo 5: Barn: cart entrance

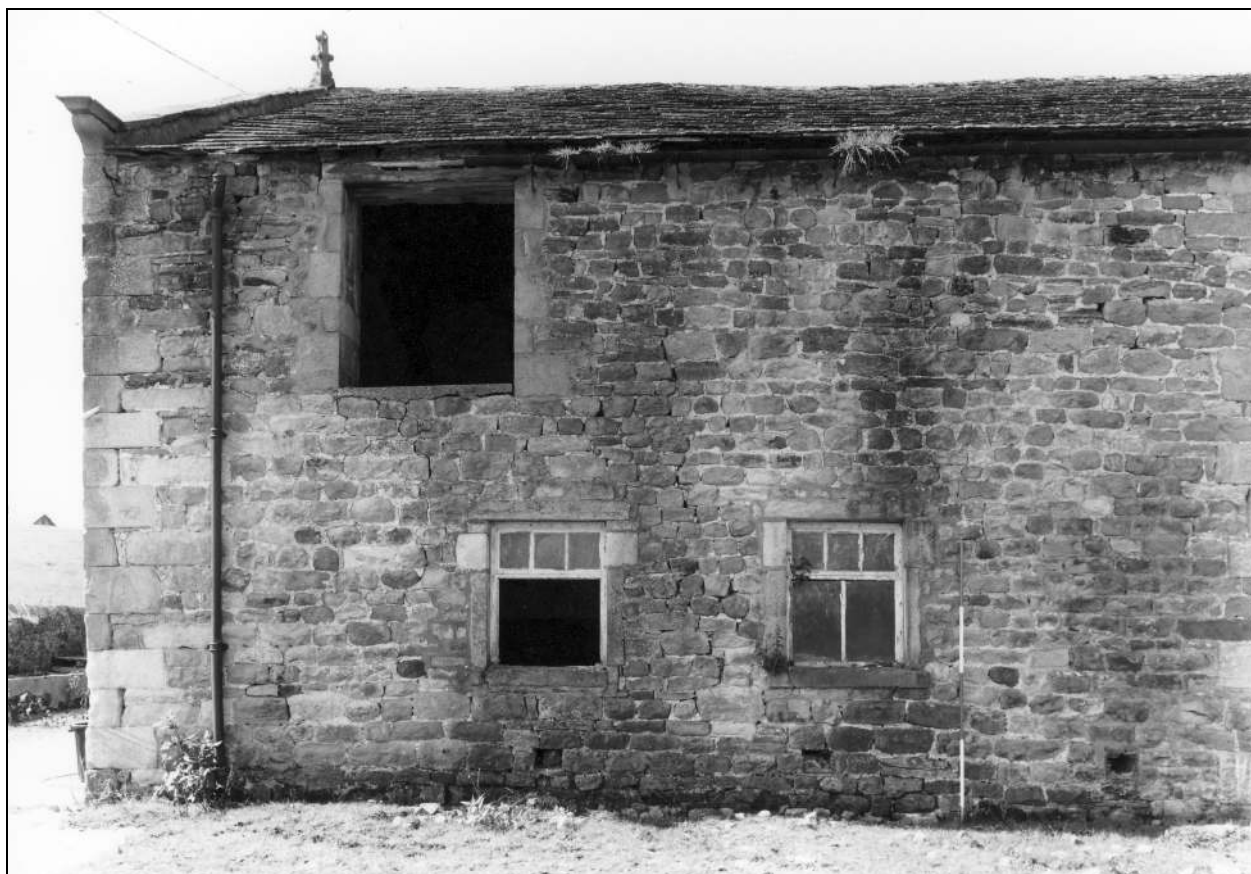


Photo 6: Barn: front elevation, left-hand end



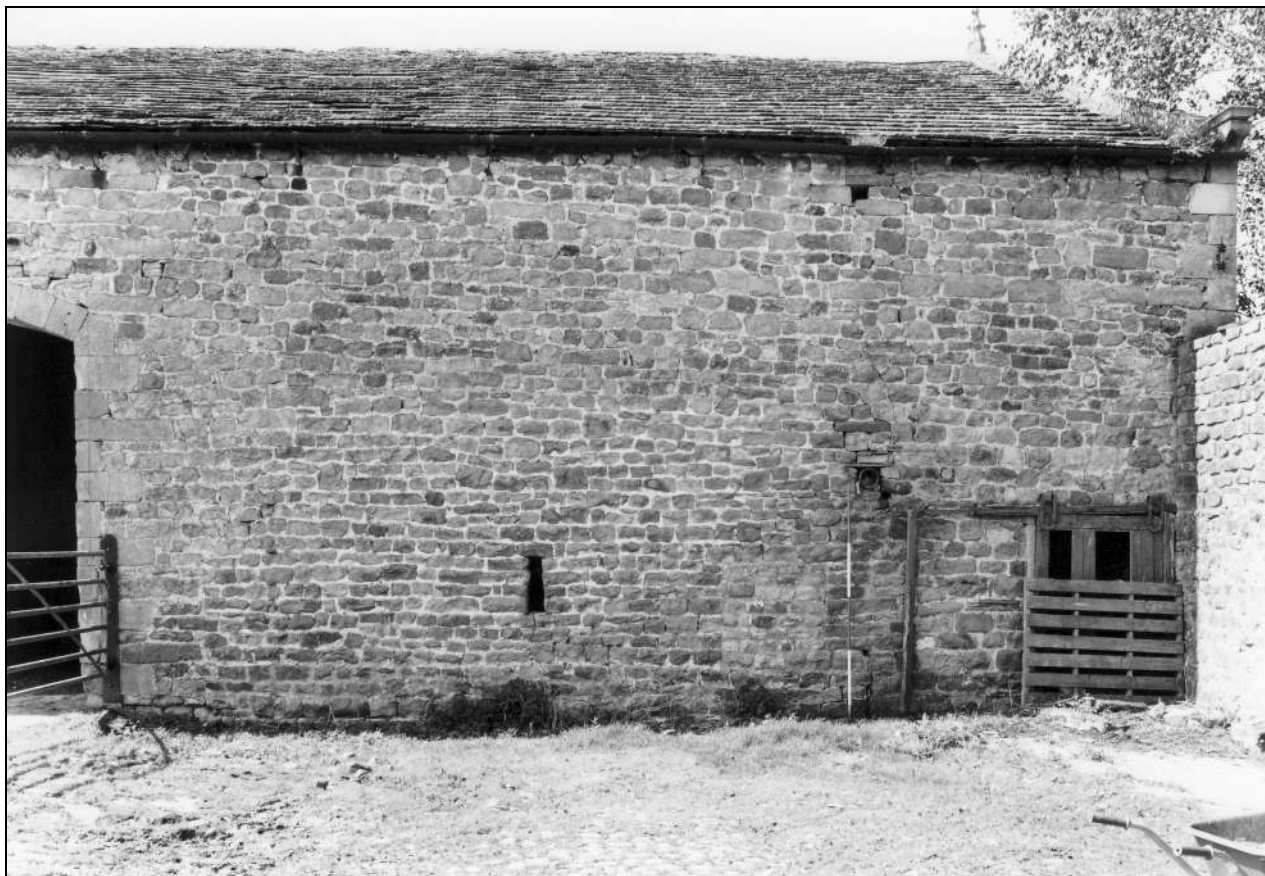


Photo 7: Barn: front elevation, right-hand end

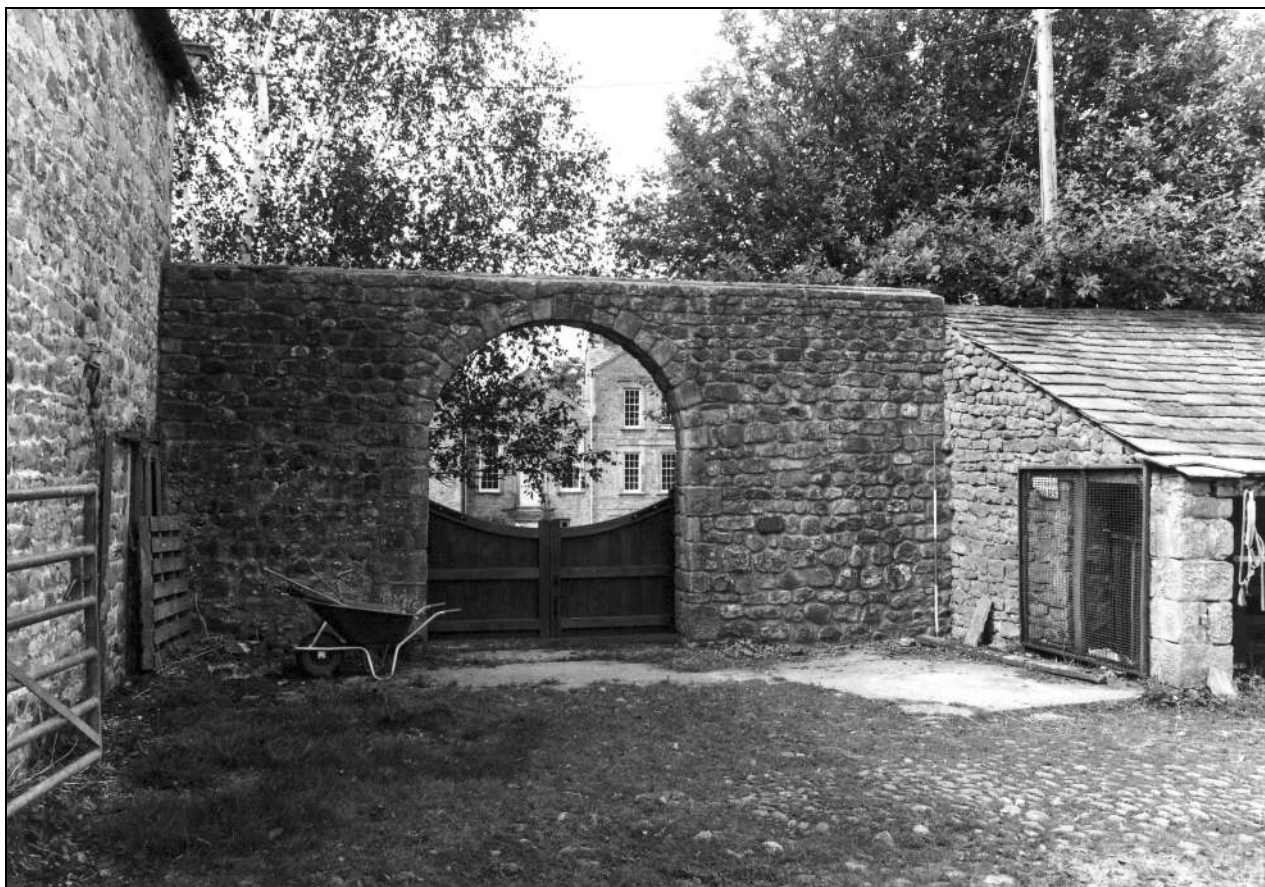


Photo 8: Garden wall to east of barn



Photo 9: Barn: north-west gable

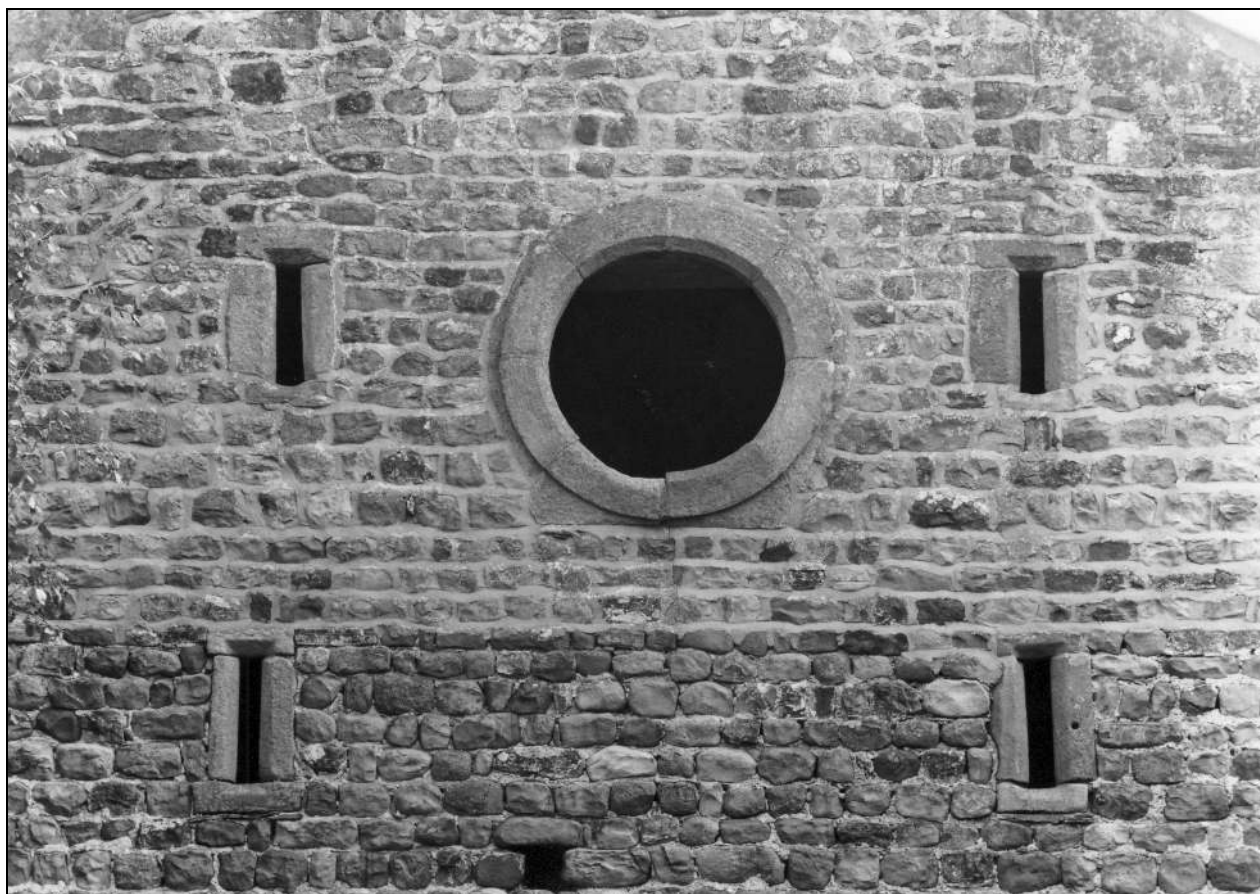


Photo 10: Barn: detail of oculus and breathers, north-west gable

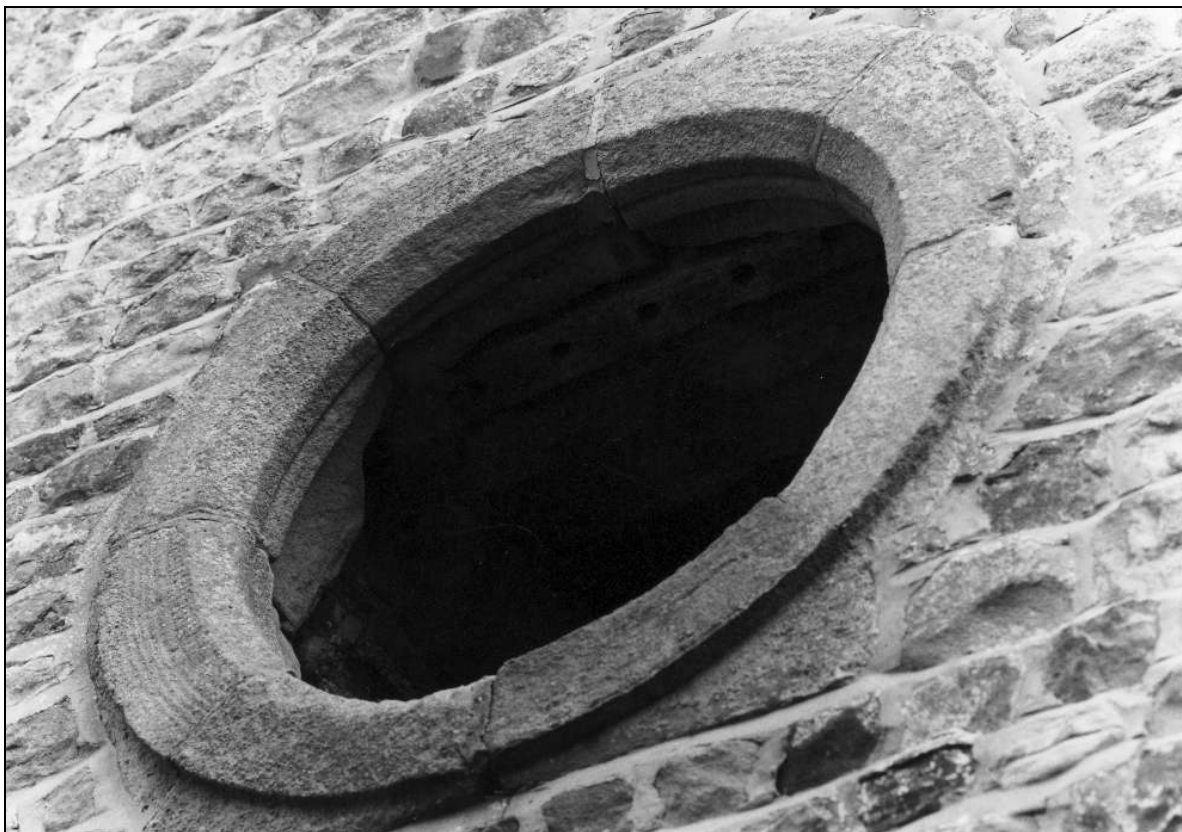


Photo 11: Barn: detail of oculus, north-west gable



Photo 12: Blocked doorway in boundary wall to west of barn





Photo 14: The barn: rebuilt south-east gable



Photo 15: The barn: rebuilt south-east gable



Photo 16: The barn: detail of upper part of rebuilt south-east gable



Photo 17: The barn: central doorway in south-west side





Photo 18: The barn: former shippon in south-east end



Photo 19: The barn: former shippon in north-west end



Photo 20: The barn: interior, from the east

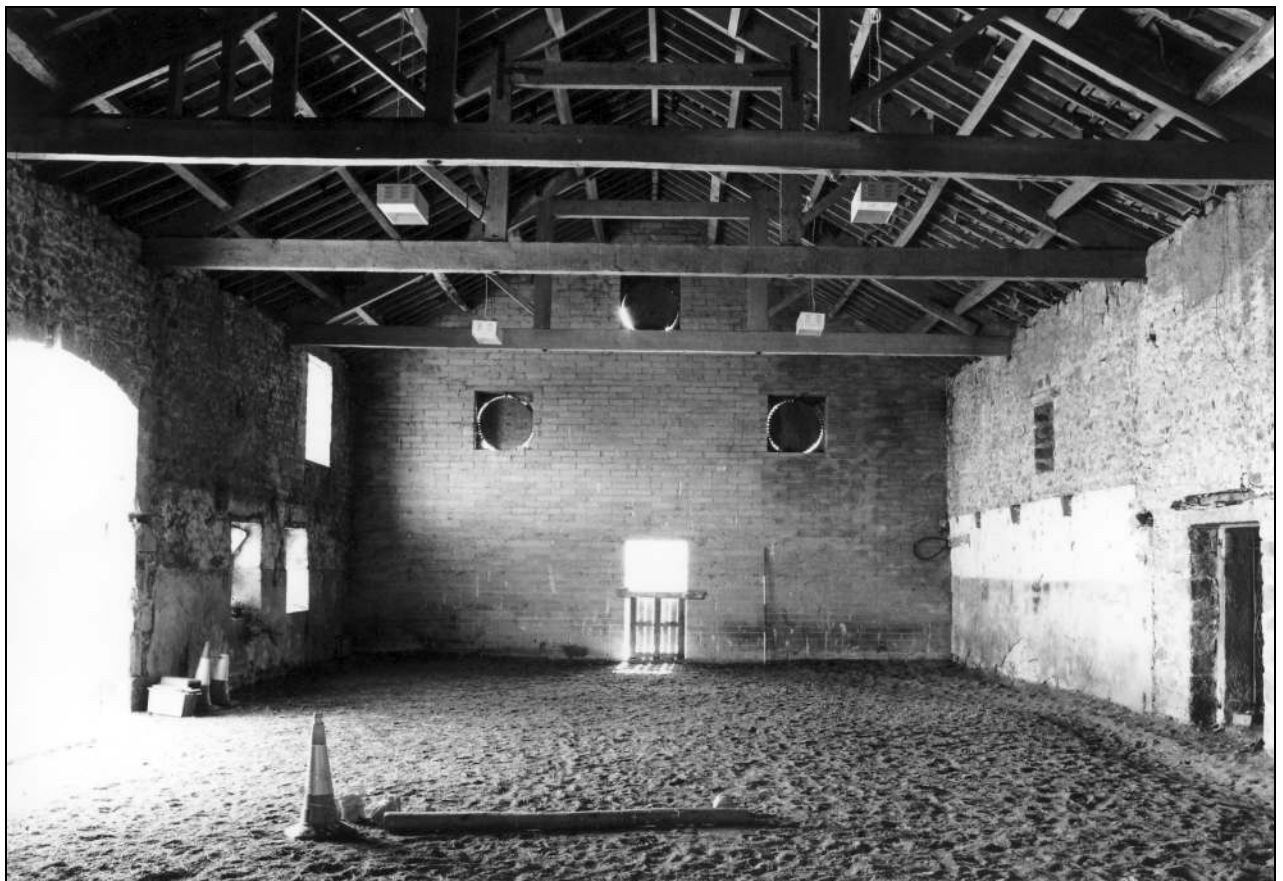


Photo 22: The barn: interior, from the north-west



Photo 24: The barn: roof trusses, from the south-east

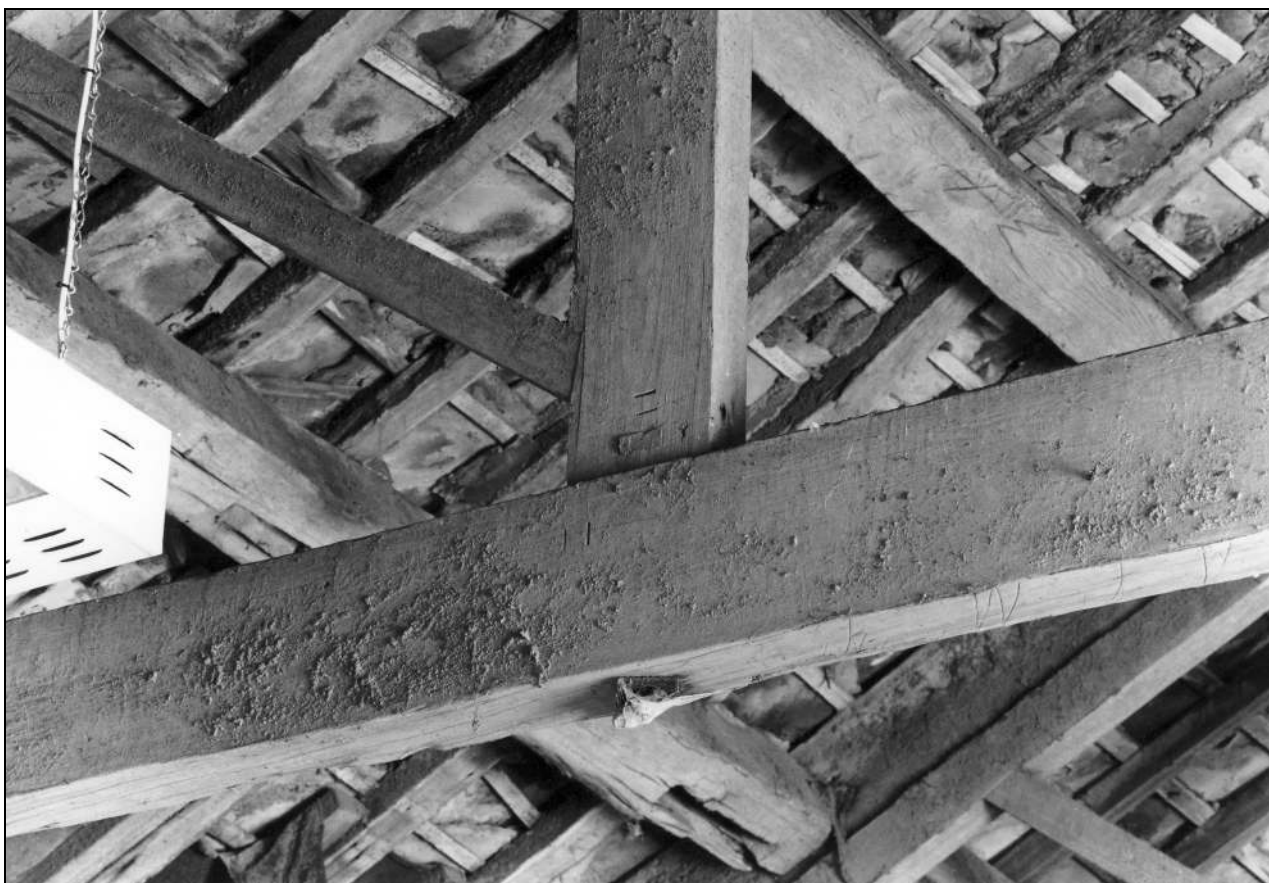


Photo 25: The barn: detail of joint and numbering on roof truss





Photo 27: The barn: oak purlins in bay four, north-east pitch



Photo 28: Barn and rear lean-to etc, from the south



Photo 29: Rear lean-to, from the south-east

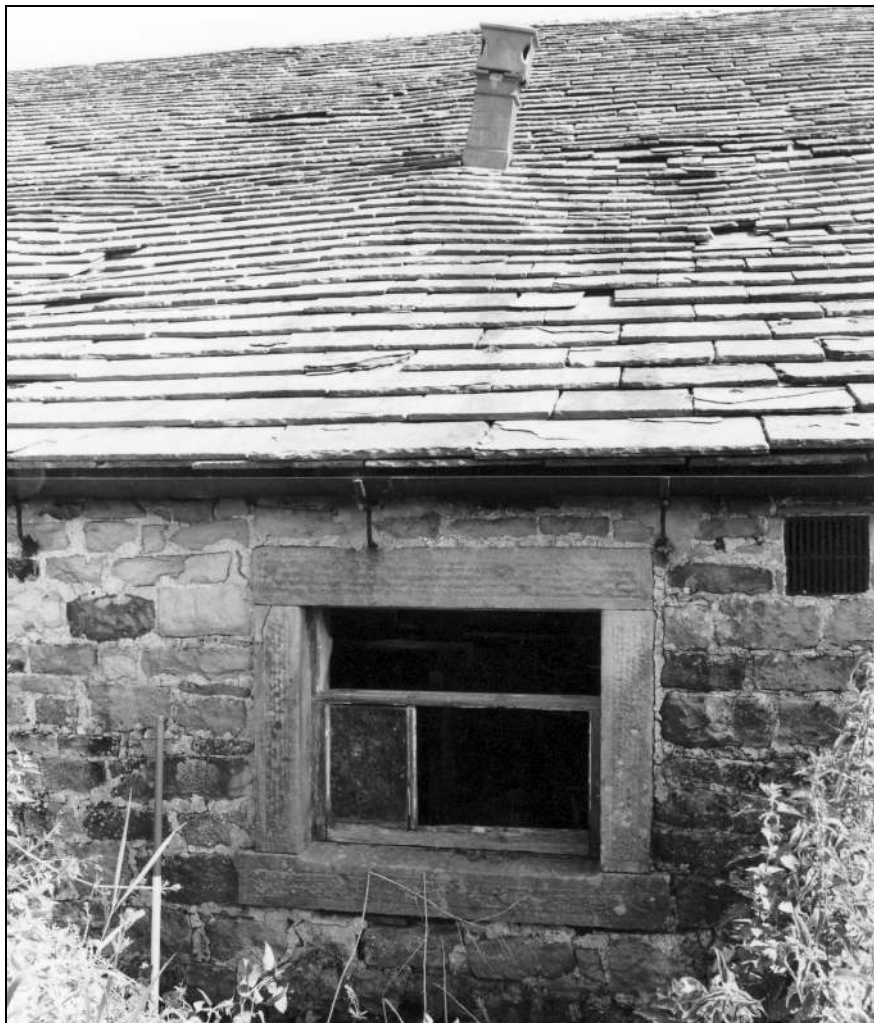


Photo 30: Rear lean-to: detail of window



Photo 31: Rear lean-to: interior



Photo 35: Rear lean-to: roof structure





Photo 36: Former dairy, from the north-east

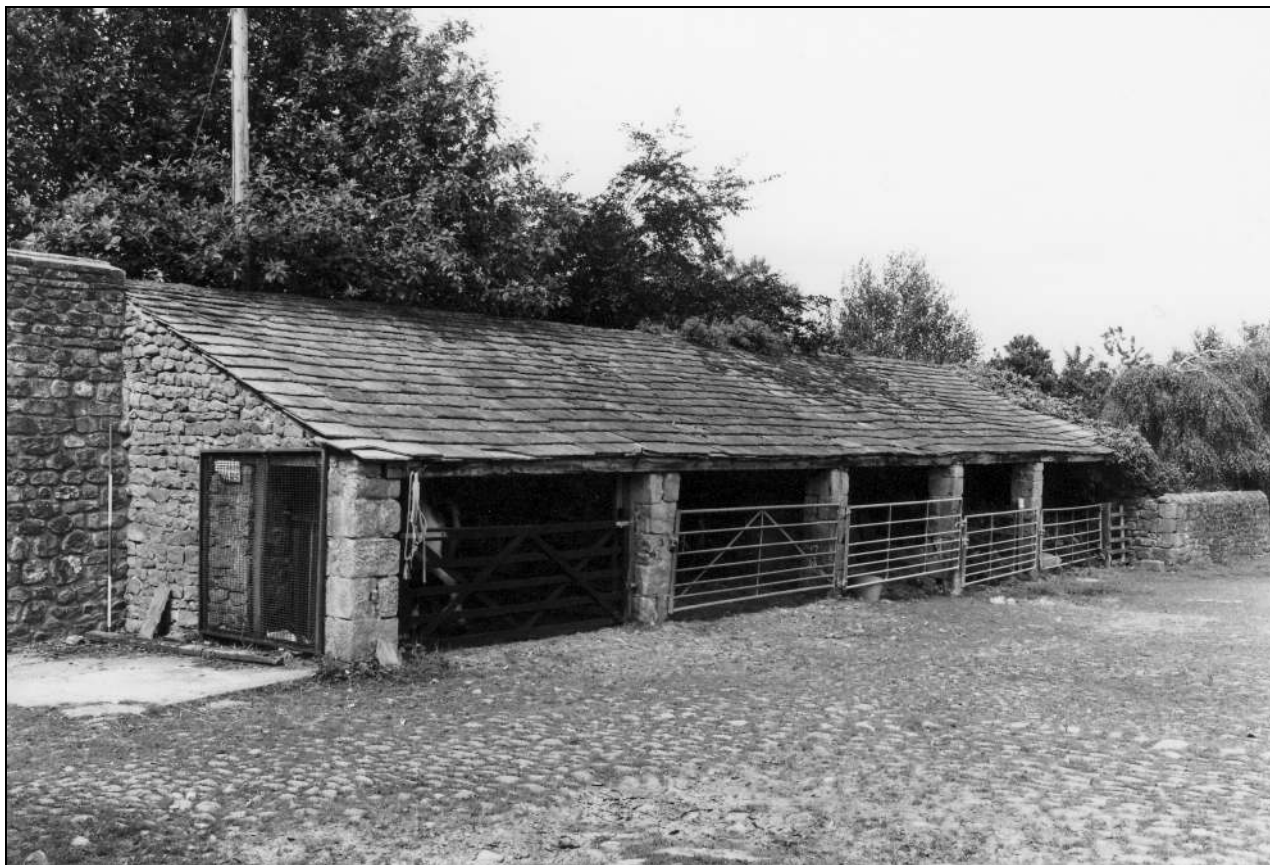


Photo 38: Open-fronted shed, from the south



Photo 39: Open-fronted shed, from the east



Photo 41: Boundary wall to garden, on which lean-to shed built



Photo 42: Open-fronted shed: roof structure



Photo 44: Stable, from the south-east





Photo 45: Stable, from the west

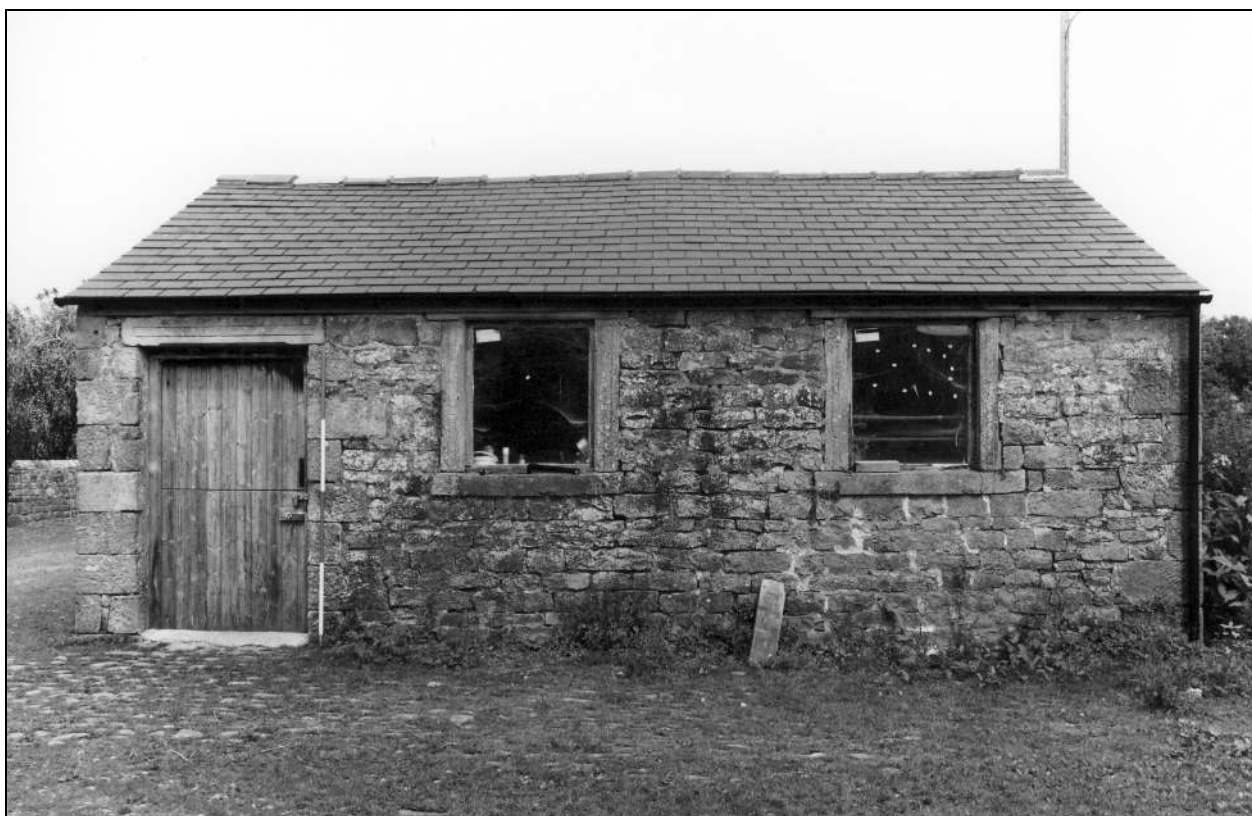


Photo 46: Stable: front elevation