



Photo 1: General view of the barn, from the south-east (film 1, frame 2)



Photo 2: General view of the barn and farmhouse, from the north-east (film 1, frame 15)



Photo 3: General view of the barn and farmhouse, from the east (film 1, frame 16)



Photo 4: The barn, from the south-east (film 1, frame 1)



Photo 5: The barn, from the south-west (film 1, frame 4)



Photo 6: The barn: west gable (film 1, frame 5)



Photo 7: The barn: east gable (inside later shed) (film 1, frame 18)

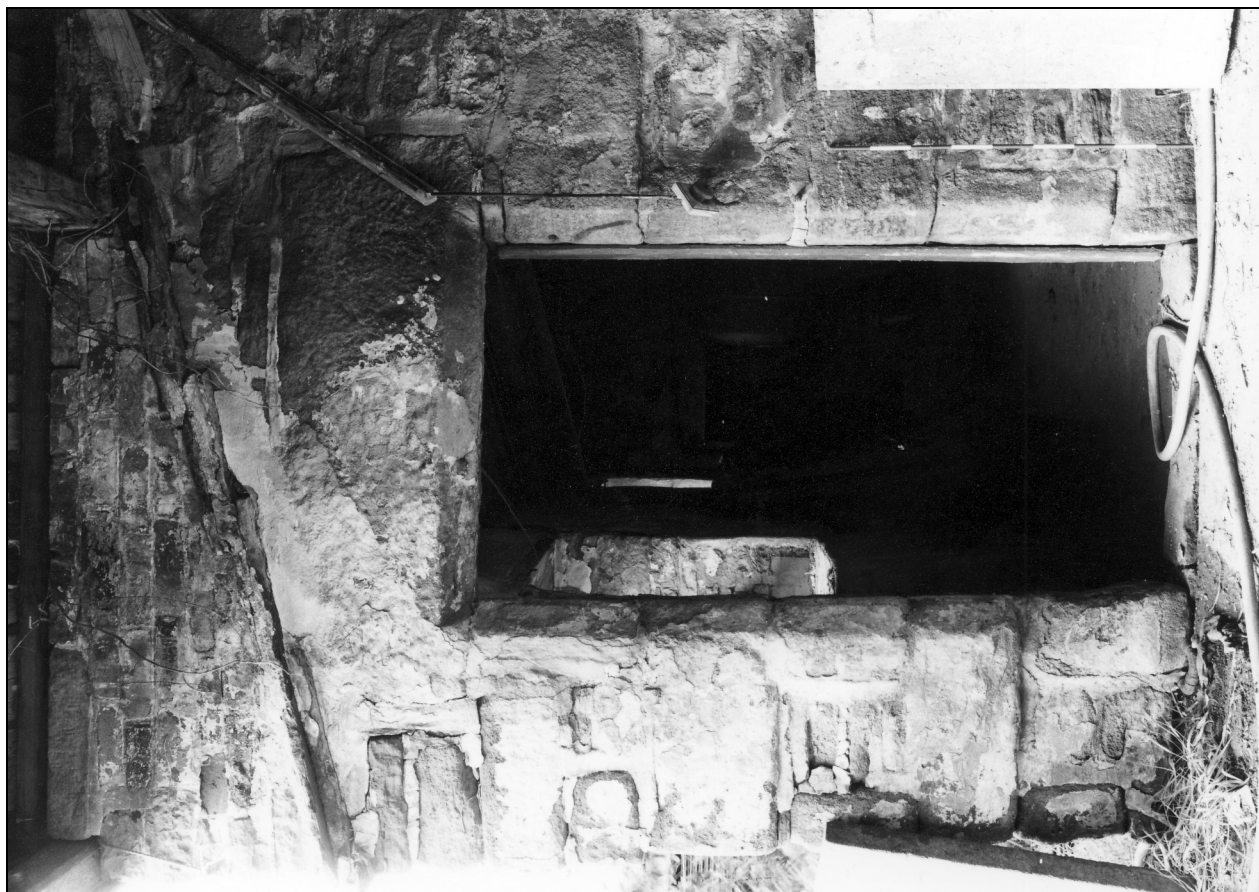


Photo 8: Doorway to shippon in south-west outshut (film 2, frame 13)



Photo 9: Doorway to shippon in south-east outshut (film 1, frame 17)



Photo 10: The barn, from the north-east (film 1, frame 10)



Photo 11: The barn, from the north-east (film 1, frame 11)



Photo 12: The barn, from the north (film 1, frame 9)

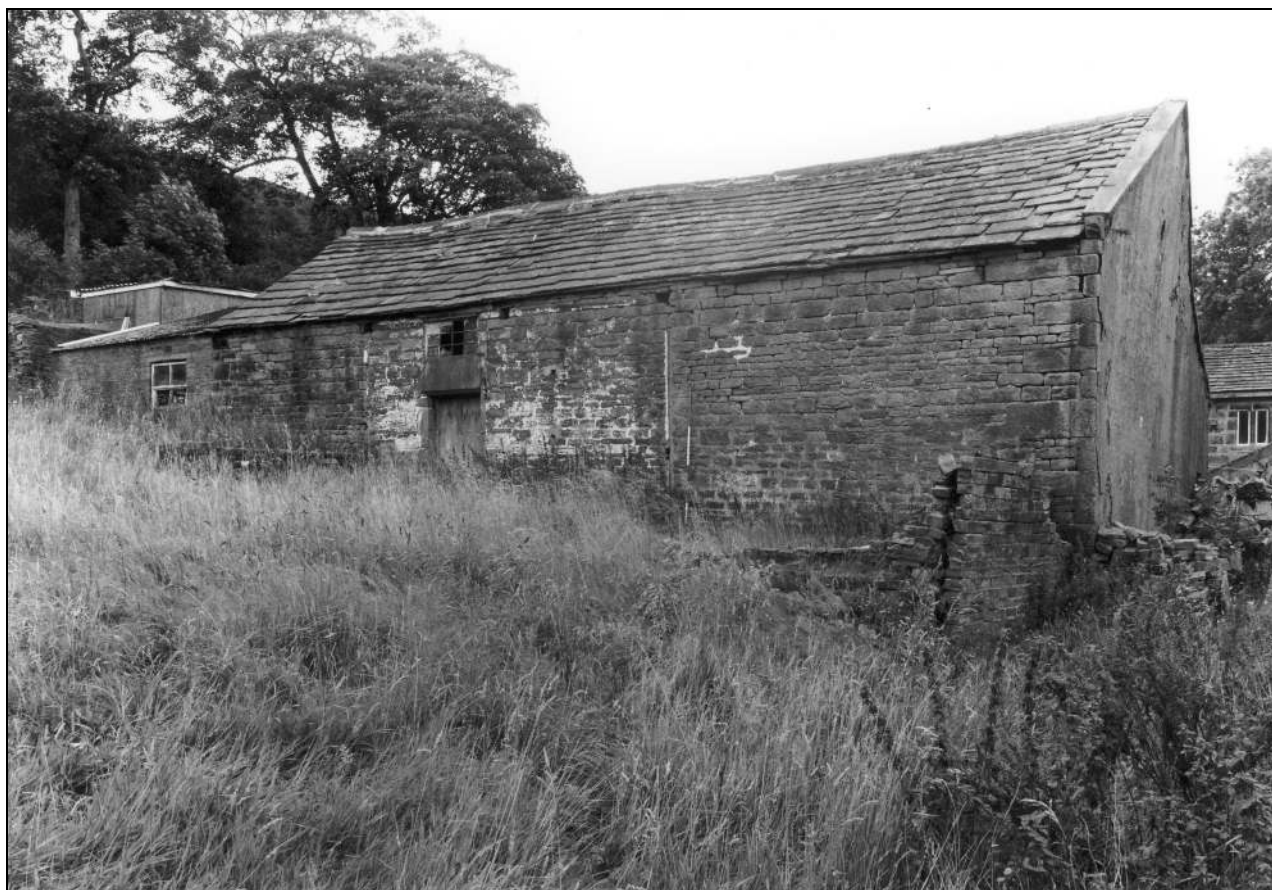


Photo 13: The barn, from the north-west (film 1, frame 7)



Photo 14: Doorway in north elevation (film 1, frame 12)





Photo 15: Detail of chamfer and stop to doorway in north elevation (film 1, frame 13)



Photo 16: Modern roof over entrance and position of doorway (film 2, frame 7)



Photo 17: View into threshing bay from main entrance (film 3, frame 10)



Photo 18: Interior of the barn, from the west (film 3, frame 15)



Photo 19: Interior of the barn, from the east (film 4, frame 1)



Photo 20: Flagged floor of barn, with re-used sill or lintel in kerb (film 4, frame 11)

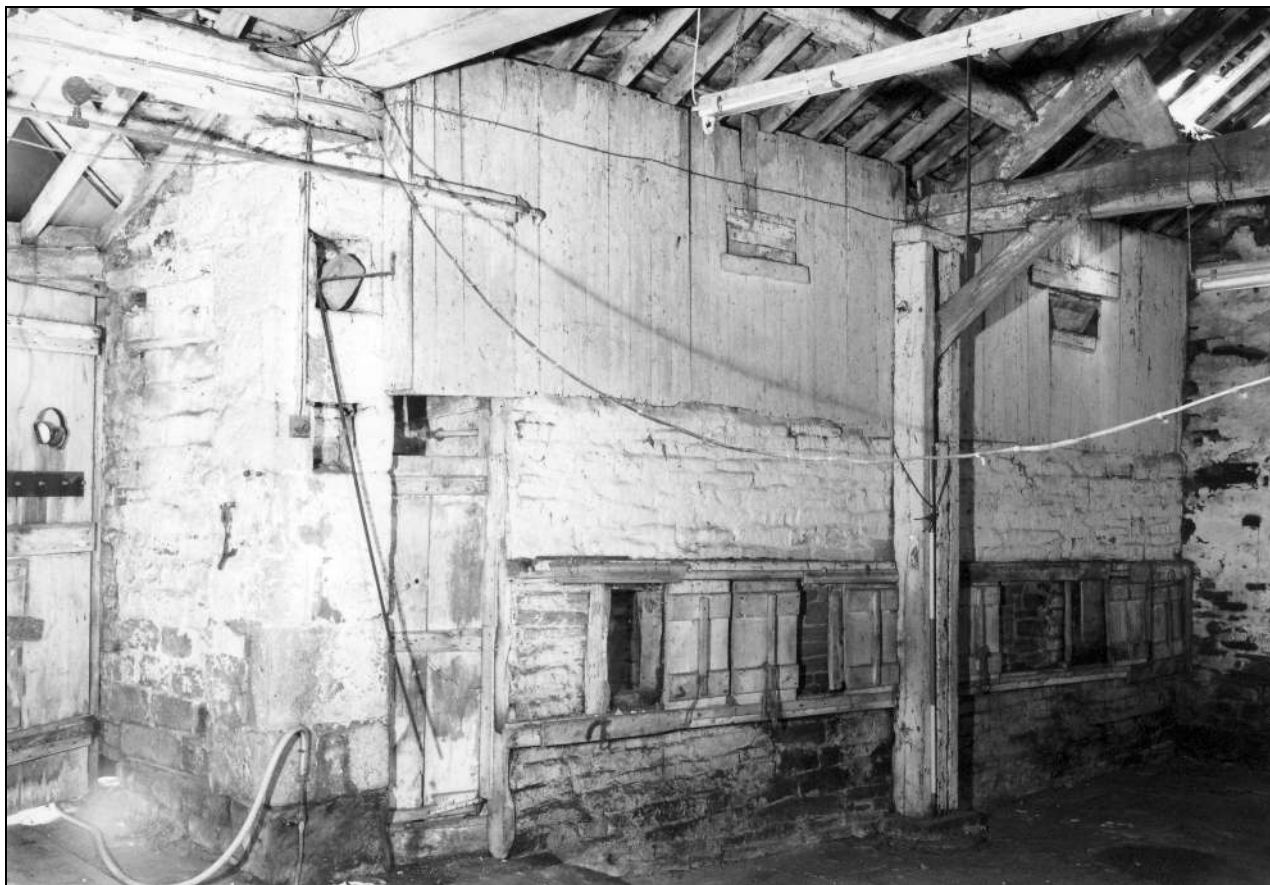


Photo 21: Interior of the barn, from the north-east, showing stone wall and partition to outshut (film 4, frame 3)



Photo 22: Stone wall and partition to south-west outshut, from the north (film 4, frame 4)



Photo 23: Interior of the barn, from the north-west, showing brick wall to south-east outshut (film 3, frame 11)



Photo 24: Brick wall to south-east outshut, from the north (film 3, frame 13)



Photo 25: Re-used panelling forming partition to south-east outshut, from the north (film 3, frame 12)

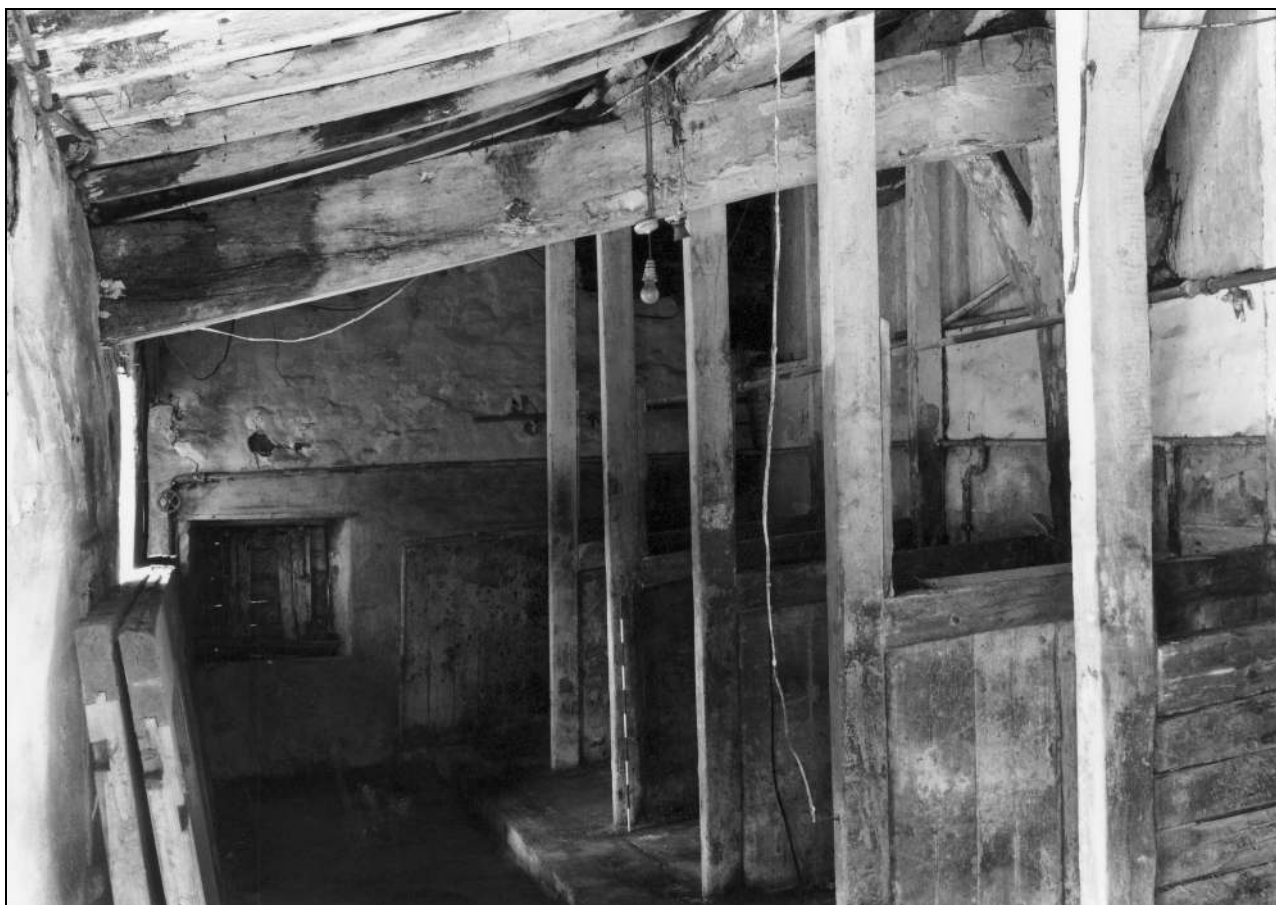


Photo 26: Shippon within south-west outshut, from the east (film 2, frame 10)

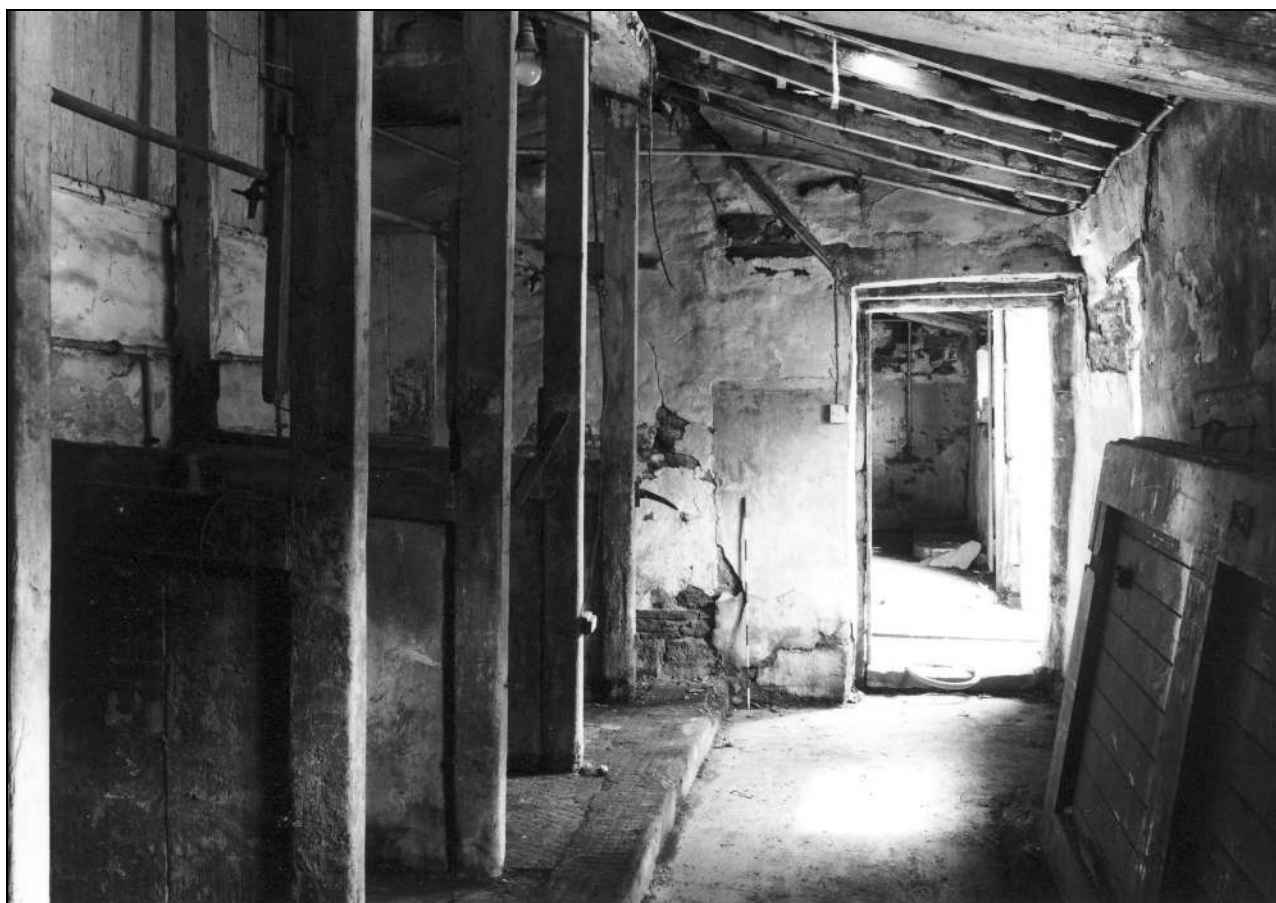


Photo 27: Shippon within south-west outshut, from the west (film 2, frame 11)



Photo 28: Typical stall within south-west outshut (film 2, frame 12)



Photo 29: Recess/cupboard in south side of south-west outshut (film 4, frame 13)





Photo 30: Mucking-out hole in west end of south-west outshut (film 2, frame 15)

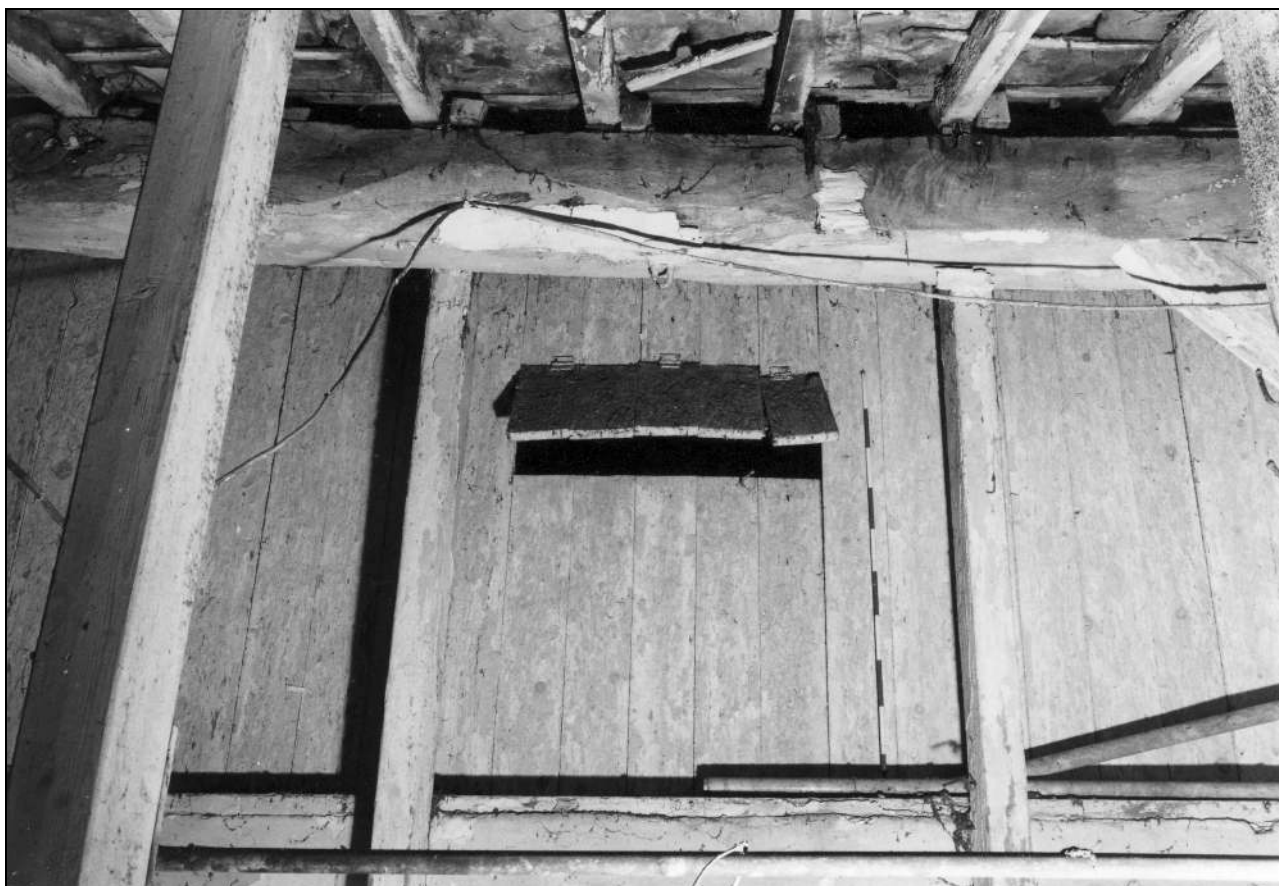


Photo 31: Plank partition to north side of south-west outshut (film 3, frame 7)



Photo 32: Shippon within south-east outshut, from the south-east  
(film 2, frame 1)



Photo 33: Shippon within south-east outshut, from the north-west  
(film 2, frame 4)



Photo 34: Shippon within south-east outshut, from the east (film 2, frame 5)



Photo 35: Plank partition to north side of south-west outshut, and arcade plate overhead (film 2, frame 2)

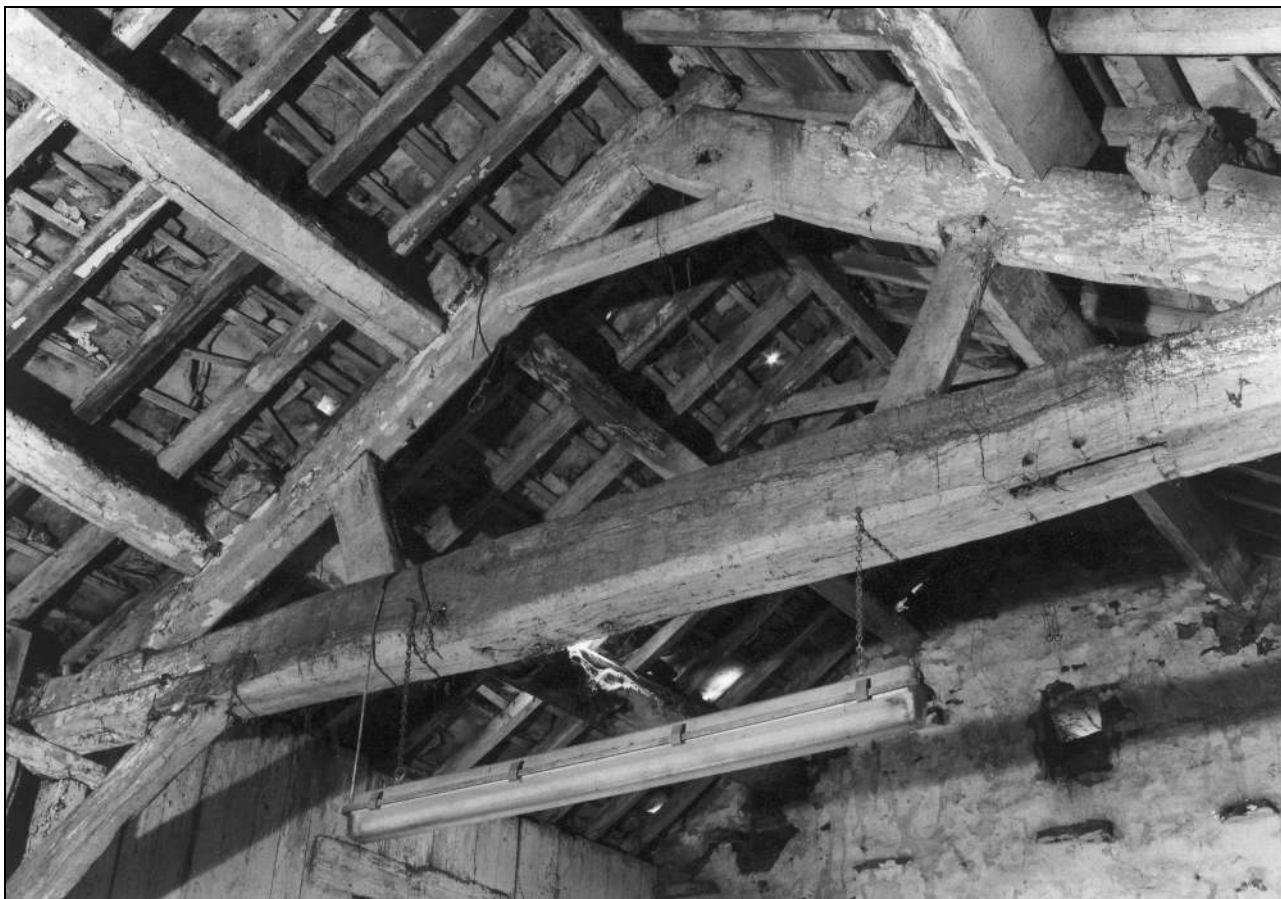


Photo 36: West roof truss, from the north-east (film 4, frame 10)



Photo 37: West roof truss, from the east (film 4, frame 9)



Photo 38: North end of west roof truss, from the east (film 4, frame 12)



Photo 39: Arcade post, from the south-west (film 3, frame 5)



Photo 40: Foot of arcade post, from the south-east (film 3, frame 3)



Photo 41: Arcade post, from the south (film 3, frame 1)



Photo 42: West arcade brace, from the west (film 3, frame 6)



Photo 43: Aisle rafter (re-used post), from the east (film 2, frame 16)



Photo 44: End of aisle rafter and east arcade brace, from the east  
(film 2, frame 18)



Photo 45: Scarf joint in arcade plate, east of arcade post, from the south (film 3, frame 4)





Photo 46: Arcade plate over barn entrance, from the south (film 2, frame 6)

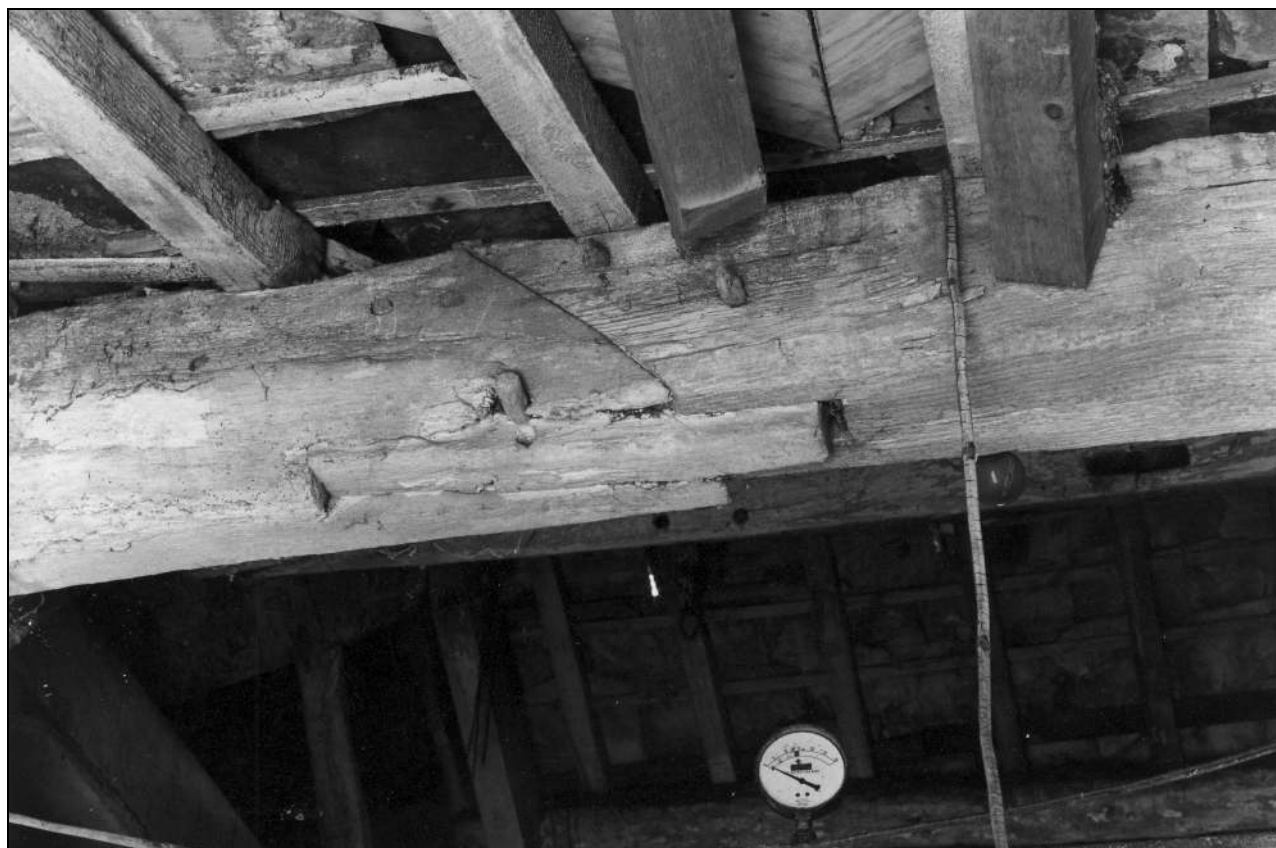


Photo 47: Detail of scarf joint in arcade plate over barn entrance, from the south (film 2, frame 9)



Photo 48: Central roof truss, from the north-east (film 4, frame 5)



Photo 49: Detail of merchant's mark on central tie beam, from the east (film 4, frame 7)



Photo 50: East roof truss, from the west (film 3, frame 17)



Photo 51: North end of east roof truss, from the south-west (film 3, frame 16)



Photo 52: East roof truss, from the east (film 3, frame 18)



Photo 53: Purlin and arcade plate over entrance bay, from the north (film 4, frame 6)



Photo 54: Purlin in south-west outshut (west end), from the east (film 3, frame 9)



Photo 55: Purlin in south-west outshut (east end), from the east (film 2, frame 17)