



Photo 46: Kitchen, from the north-west, with walls of 1886 to left and right, the latter butting earlier heck (film 3, frame 18)



Photo 47: Stone heck, to north of housebody fireplace, from the north (film 4, frame 4)

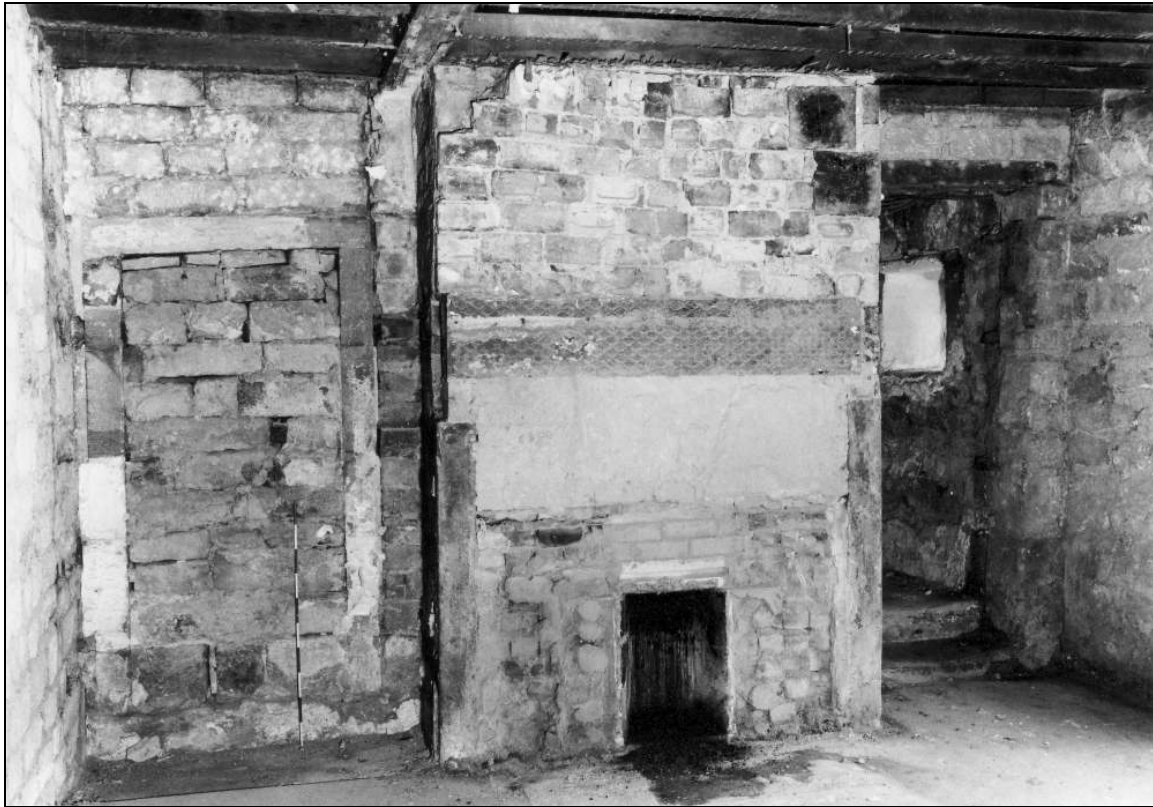


Photo 48: Kitchen fireplace, with blocked doorway to west wing, from the east (film 3, frame 17)



Photo 49: Small larder in north-east corner of west wing,  
from the east (film 4, frame 3)

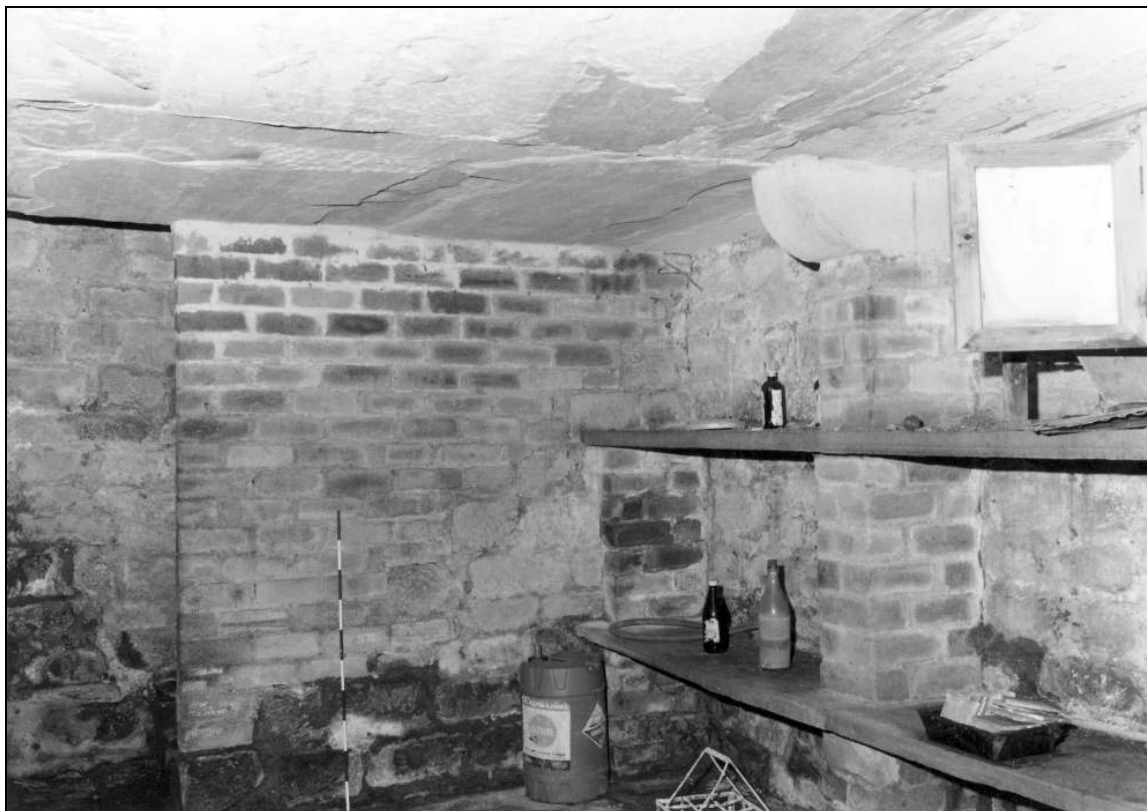


Photo 50: Cellar (created 1886), from the north-west (film 2, frame 13)

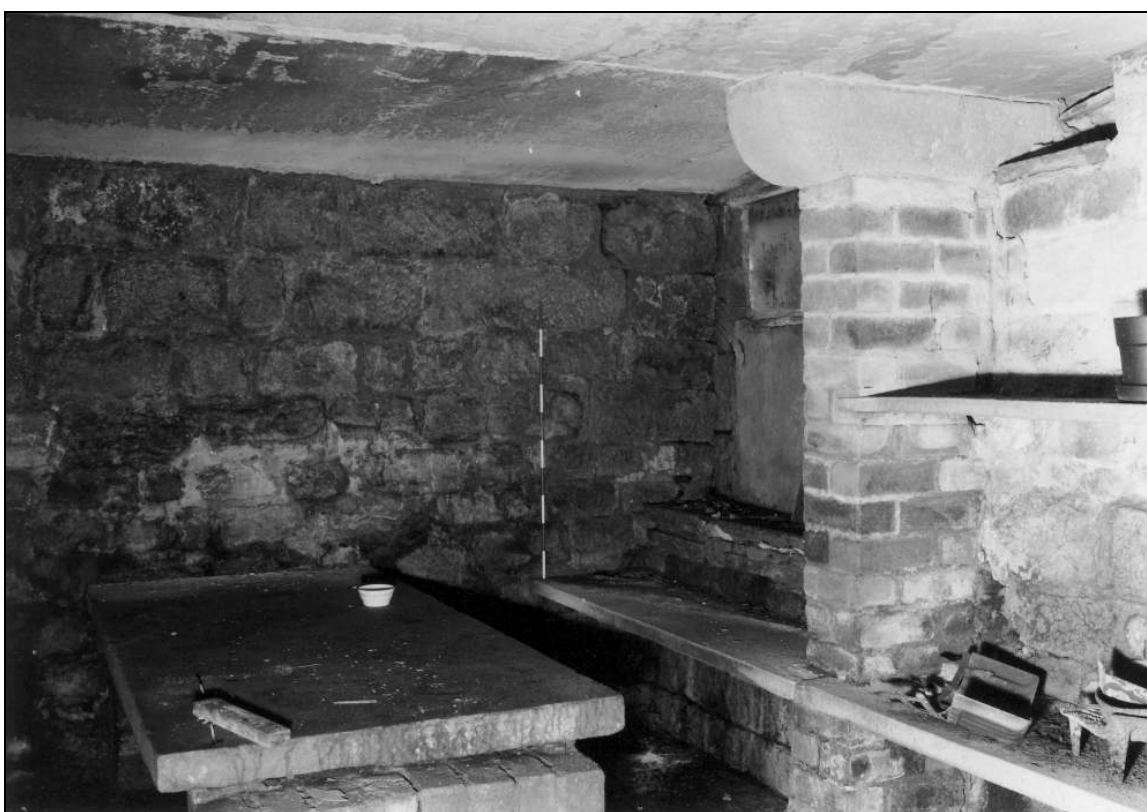


Photo 51: Cellar (created 1886), from the south-east (film 2, frame 12)

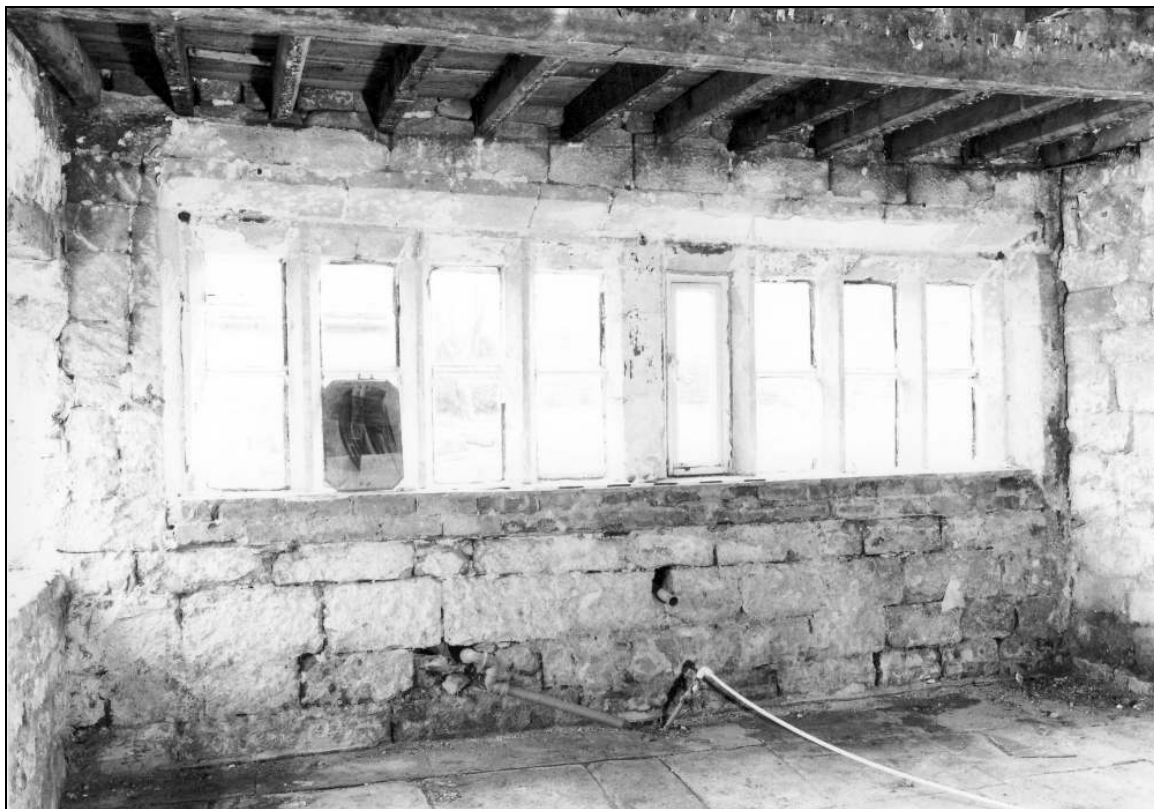


Photo 52: Parlour window, east wing, from the north-east (film 4, frame 9)



Photo 53: Seventeenth century fireplace in parlour, from the west (film 4, frame 12)





Photo 54: Seventeenth century fireplace in parlour, as revealed during repairs (film 7, frame 4)

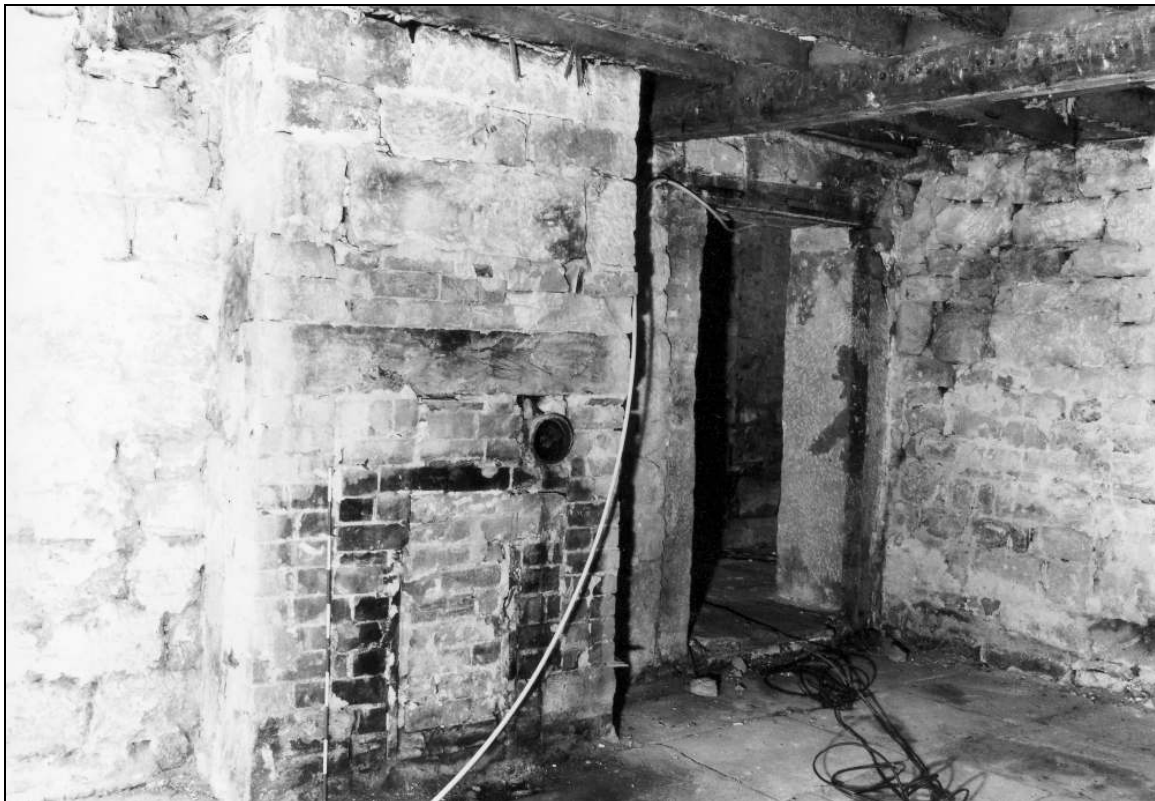


Photo 55: Eighteenth/nineteenth century fireplace in parlour of east wing, from the south-east (film 4, frame 10)



Photo 56: Parlour, in front of east wing, from the north-west (film 4, frame 7)



Photo 57: Parlour, in front of east wing, from the south-west (film 4, frame 11)



Photo 58: Parlour, in front of east wing: floor frame over, from the south (film 4, frame 13)

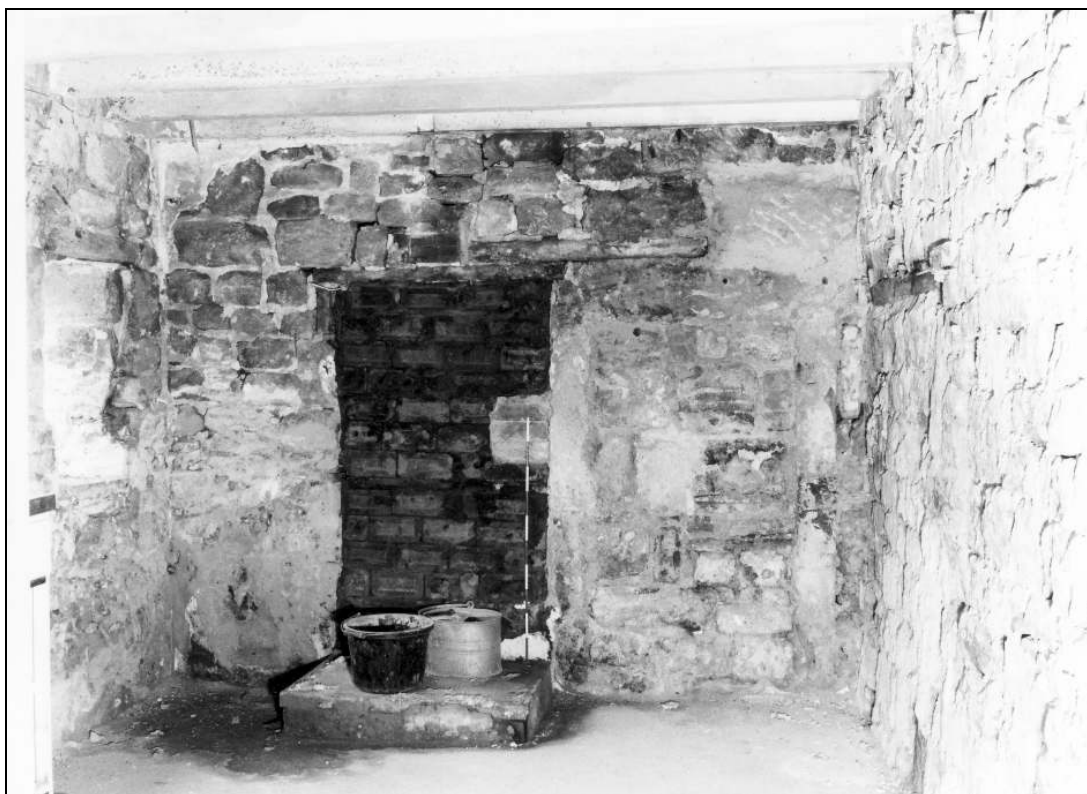


Photo 59: Back kitchen, in east wing, from the west (film 4, frame 16)



Photo 61: Stairwell, from the south-west (film 4, frame 6)



Photo 60: Blocked doorways in south-east corner of back kitchen (film 4, frame 17)





Photo 62: Stairs to first floor, from the north-west (film 4, frame 5)

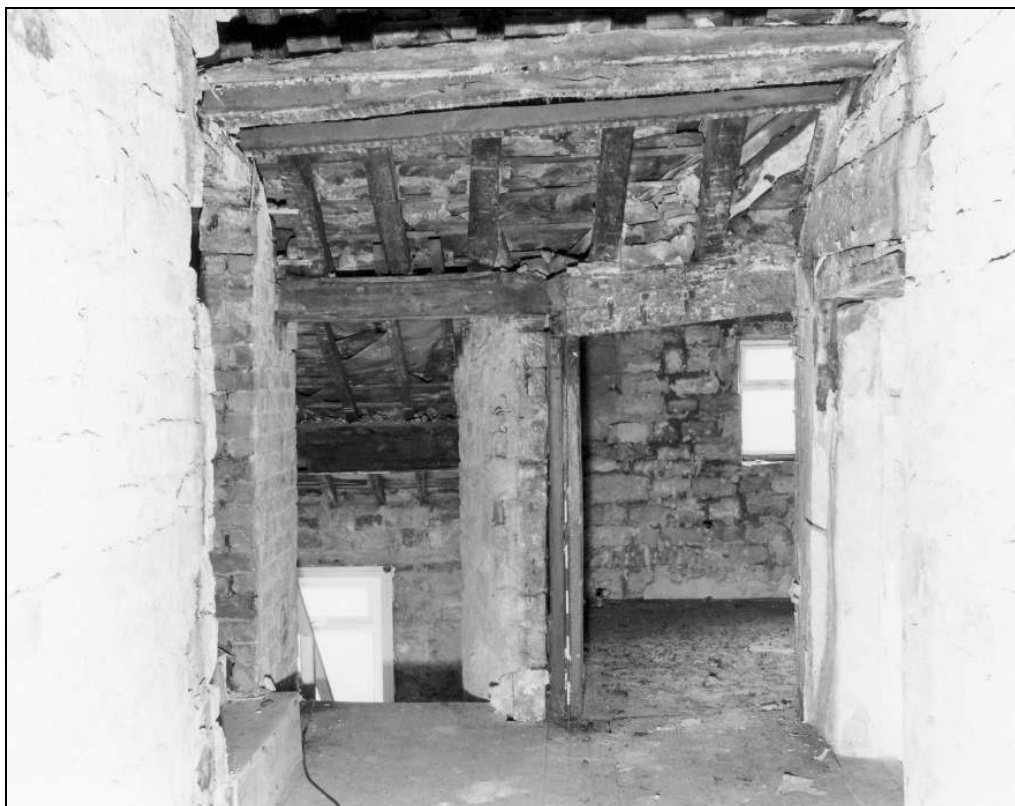


Photo 63: First floor room over hearth passage, from the south (film 5, frame 2)



Photo 65: Top of north wall post and remains of truss, to east of hearth passage, from the west (film 5, frame 4)

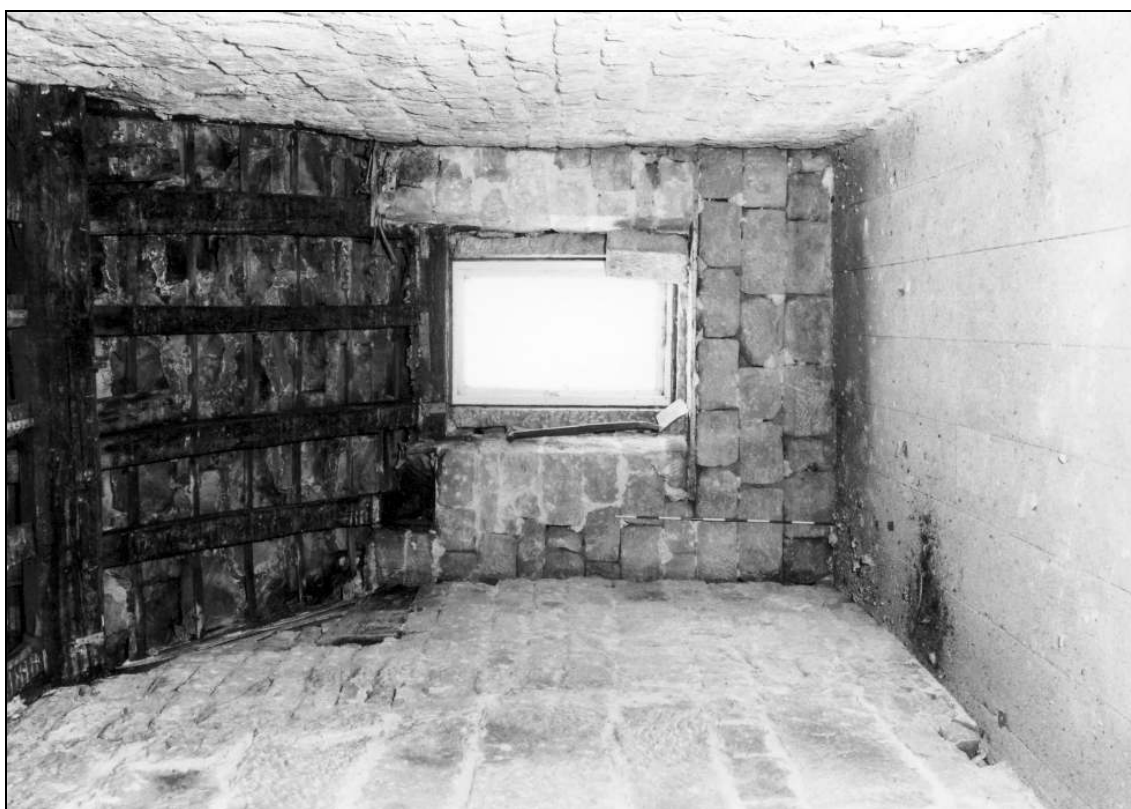


Photo 64: First floor room over hearth passage, from the north (film 4, frame 18)



Photo 66: Top of south wall post and remains of truss, to east of hearth passage, from the west (film 5, frame 1)



Photo 67: Remains of truss and ridge over hearth passage, from the north-west (film 5, frame 5)



Photo 68: Rear chamber, east wing: doorway, from the north, showing wall or arcade post at left (film 5, frame 14)

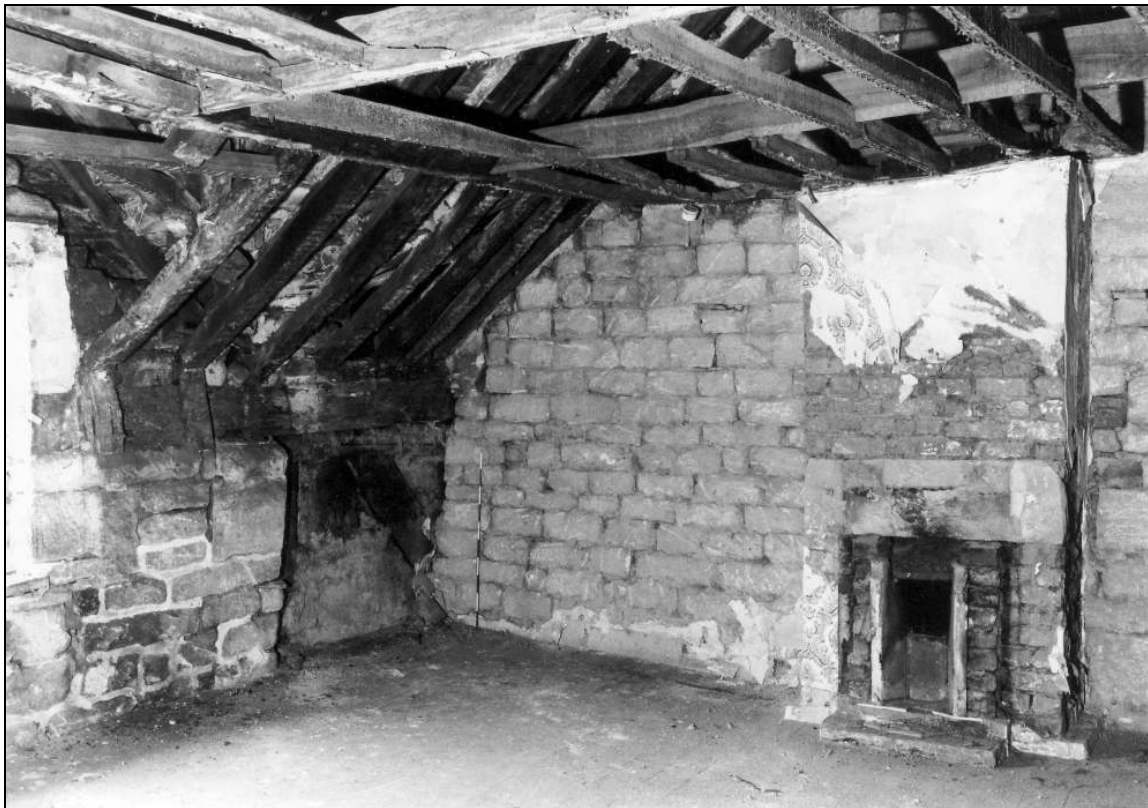


Photo 69: Chamber over housebody, from the north-east, showing exposed studs in corner, and 1886 fireplace (film 6, frame 5)





Photo 70: Chamber over housebody, from the north (film 6, frame 3)



Photo 71: Window in gablet to chamber over housebody,  
with wall plate to either side (film 6, frame 11)



Photo 72: Chamber over housebody: stub of sawn-off tie beam, and scarf joint in wall plate, south wall (film 6, frame 4)



Photo 73: Chamber over housebody: blocked doorway to west wing (film 6, frame 9)



Photo 74: Chamber over housebody, from the south (film 6, frame 10)



Photo 75: Wall or arcade plate re-used as purlin, over kitchen, from the south-west (film 4, frame 1)



Photo 76: Chamber over parlour, east wing, from the north (film 5, frame 7)

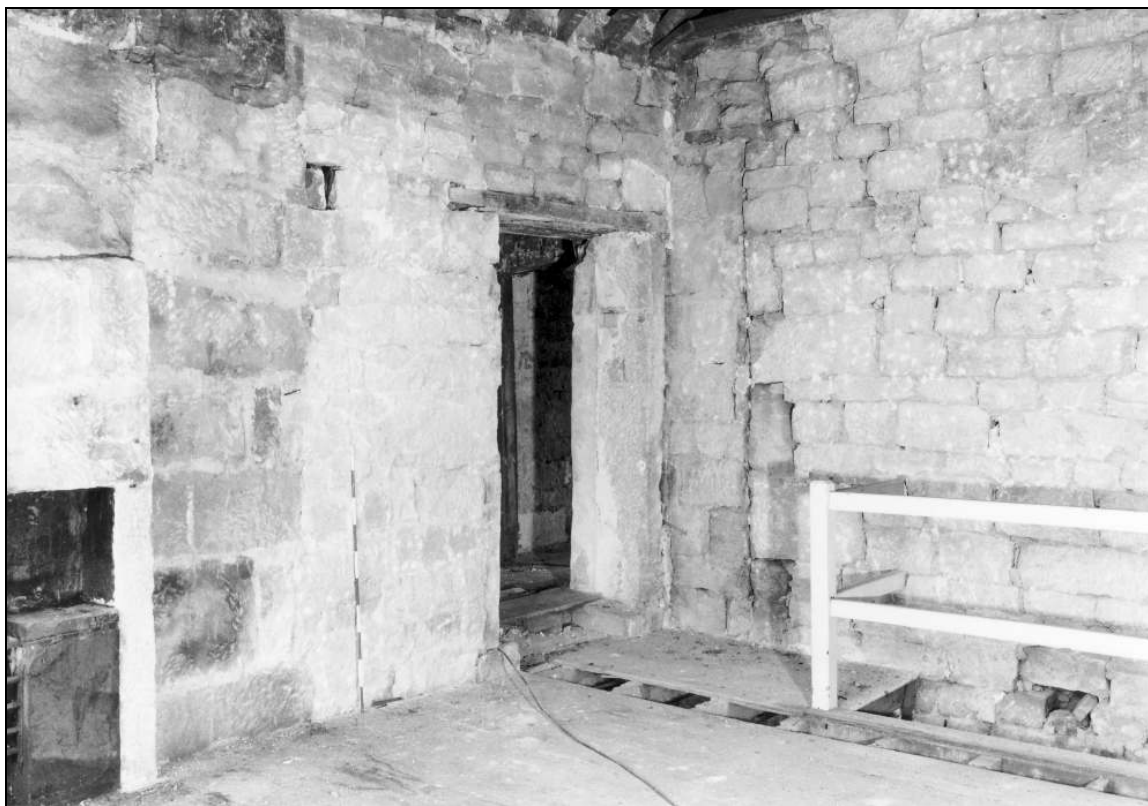


Photo 77: Chamber over parlour, east wing, from the south-east (film 5, frame 8)





Photo 78: Chamber over parlour, east wing, from the south-west (film 5, frame 11)

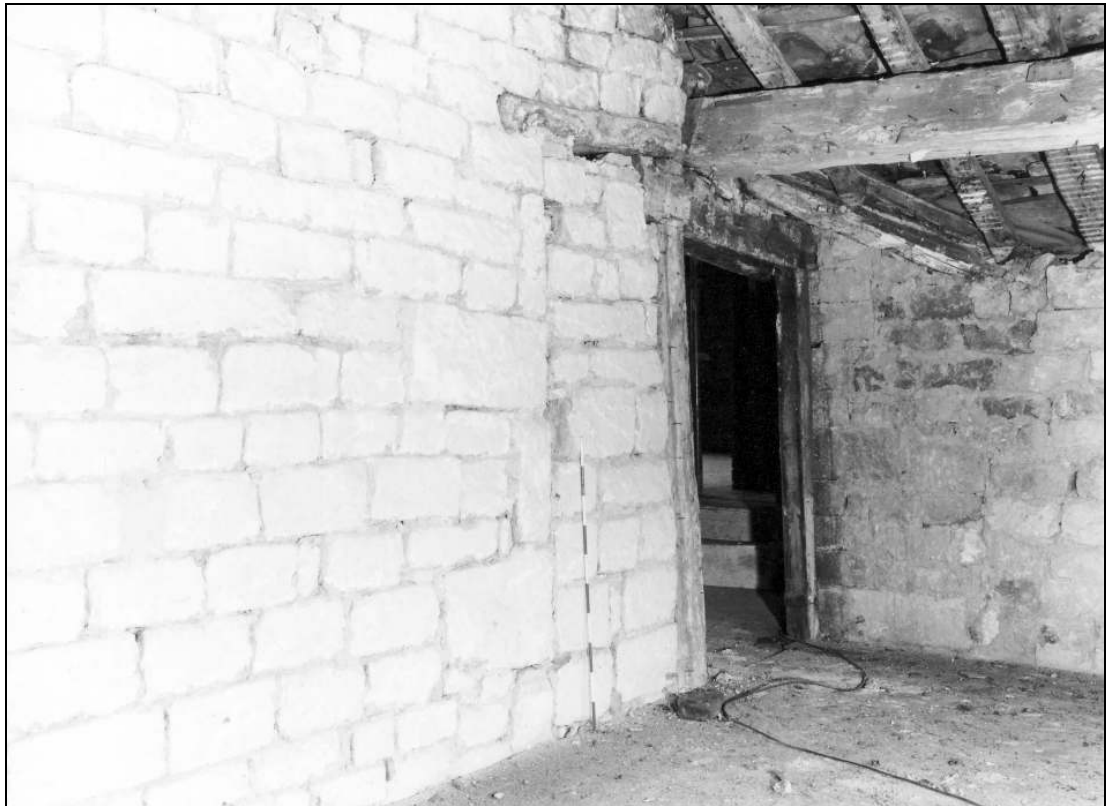


Photo 79: Rear chamber, east wing, from the north-east (film 5, frame 13)



Photo 80: Chamber over parlour, east wing, from the north-west (film 5, frame 6)



Photo 81: Chamber over parlour, east wing:  
eighteenth/nineteenth century fireplace, from the east (film  
5, frame 10)



Photo 82: Rear chamber, east wing, from the south-west (film 5, frame 17)



Photo 83: Rear chamber, east wing, from the south-west (film 5, frame 18)

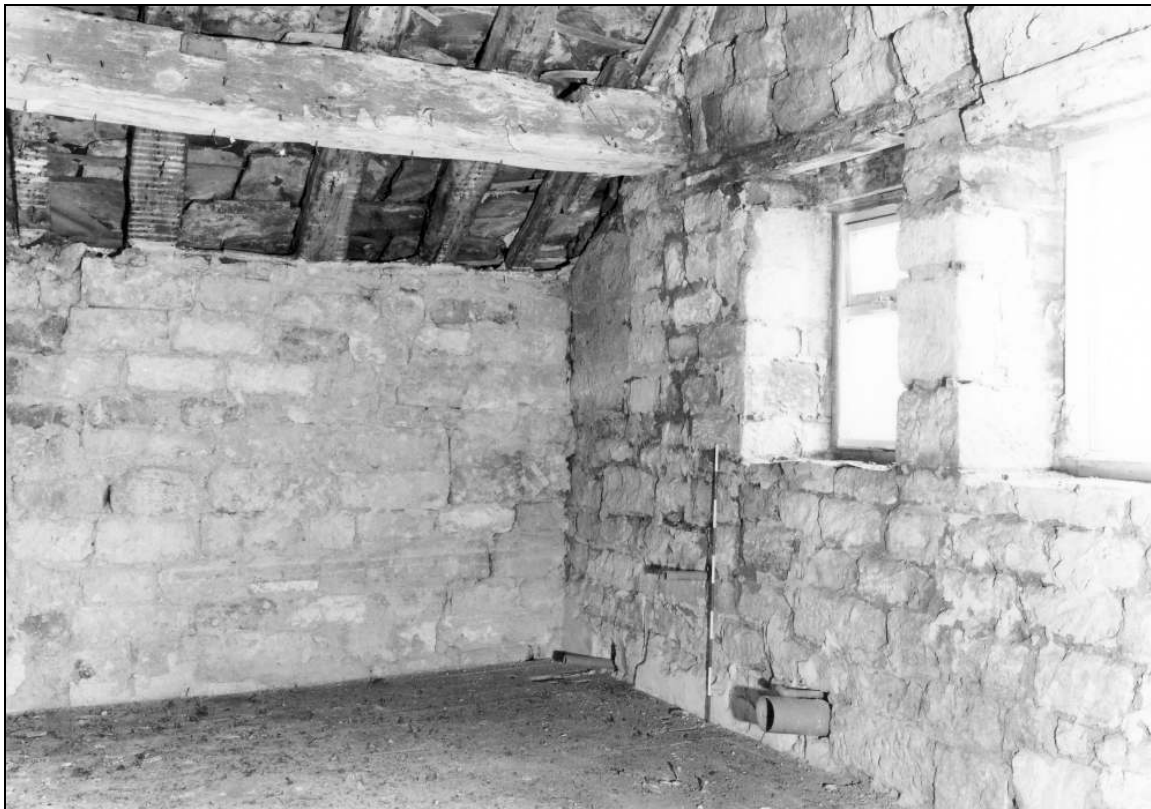


Photo 84: Rear chamber, east wing, from the south-east (film 5, frame 16)

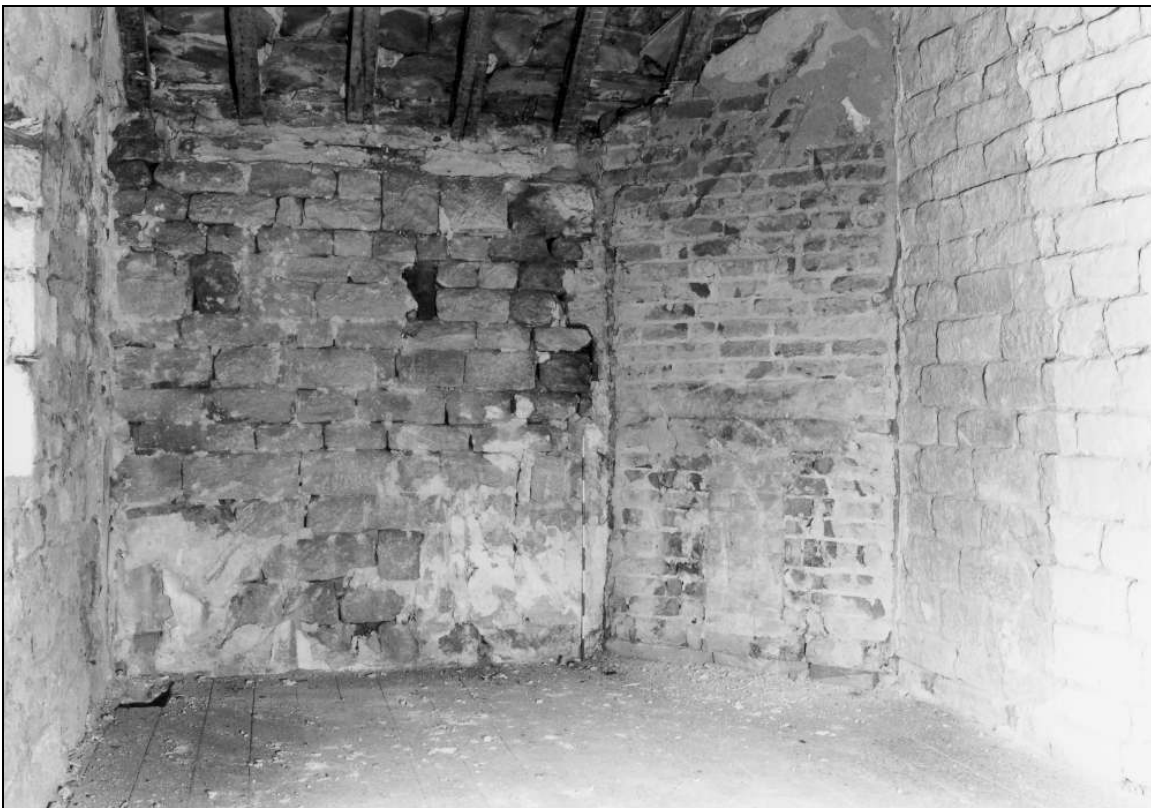


Photo 85: Rear chamber, east wing, from the west (film 5, frame 12)





Photo 87: Remains of post at south-east corner of house (ground floor), revealed during repairs (film 7, frame 1)



Photo 86: Remains of post at south-east corner of house (first floor), revealed during repairs (film 7, frame 2)



Photo 89: Remains of post at north-east corner of house (first floor), revealed during repairs (film 7, frame 5)



Photo 88: Remains of post at north-east corner of house (first floor), revealed during repairs (film 7, frame 7)



Photo 90: Remains of post at north-east corner of house (first floor), revealed during repairs (film 7, frame 6)

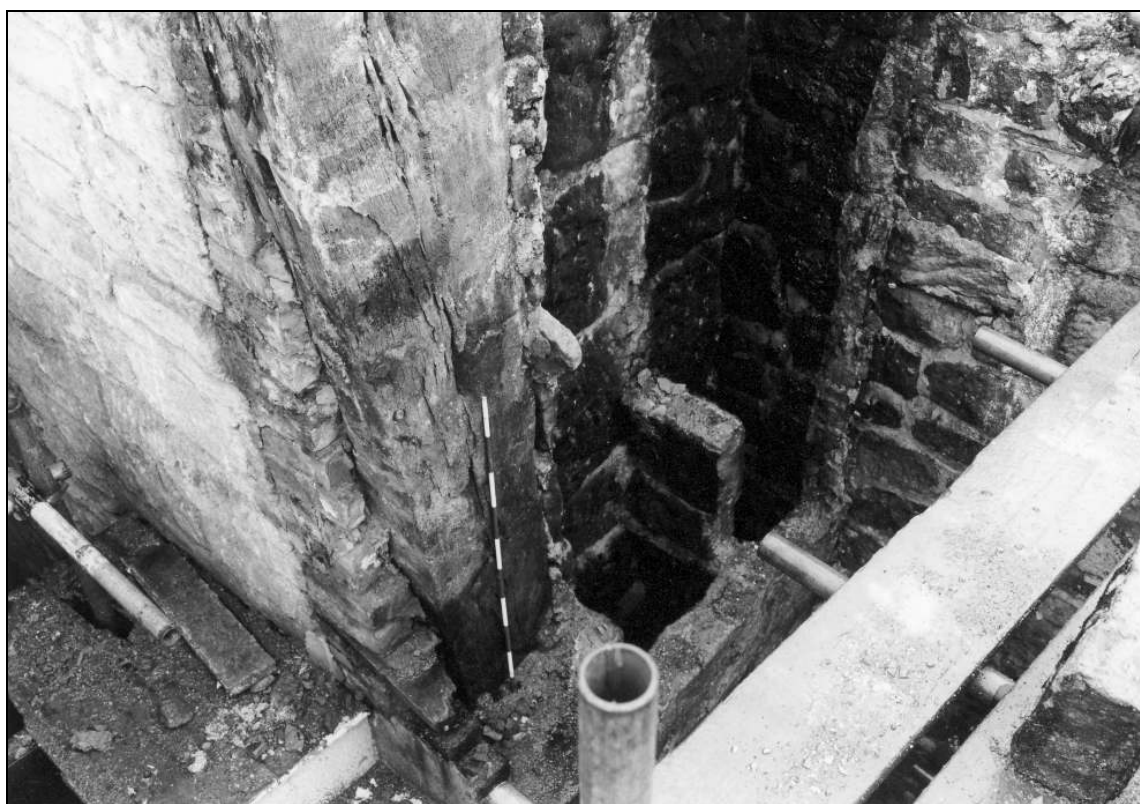


Photo 91: Remains of post at north-east corner of house, with adjacent flues (film 7, frame 9)



Photo 92: Threshold at front entrance (possible grave marker) (film 6, frame 12)