

Photo 1: The church, from the north-east across Huddersfield Road (film 9, frame 13)



Photo 2: The church, from the north across Huddersfield Road (film 9, frame 7)



Photo 3: The church, from the north-west across Huddersfield Road (film 9, frame 15)



Photo 4: The church, from the north-west across Huddersfield Road (film 9, frame 17)



Photo 5: The church, from the north-east across Huddersfield Road (film 9, frame 18)



Photo 6: Front elevation of the church (film 9, frame 9)



Photo 7: Front entrance to church (film 9, frame 10)



Photo 8: Detail of fanlight, key-stone and impost band over front entrance (film 9, frame 16)



Photo 9: Detail of pediment with name and date of church (1877) (film 9, frame 11)



Photo 10: Detail of first floor window in north elevation of church (film 9, frame 12)

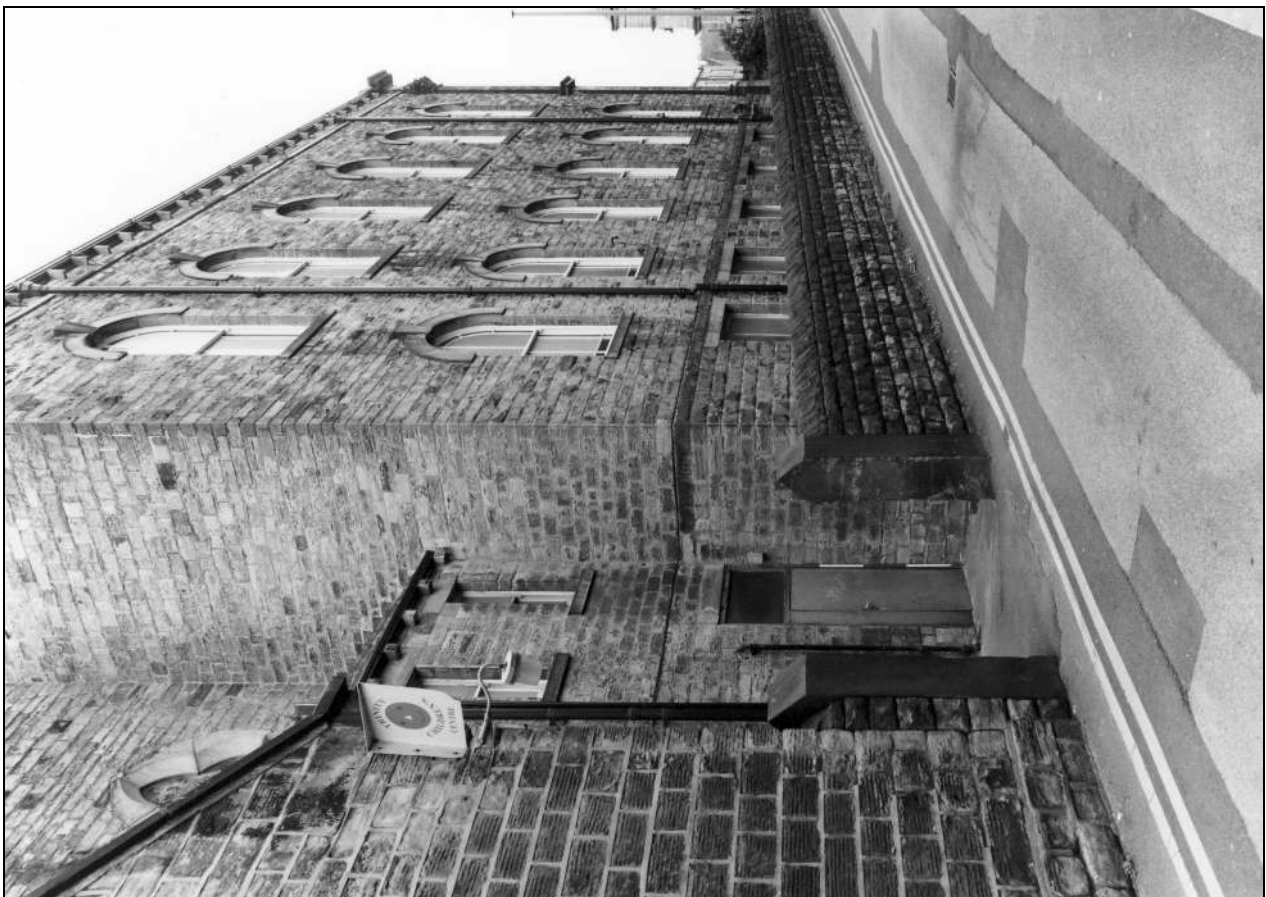


Photo 11: The east side of the church, from the south-east, up Trinity Street (film 10, frame 7)



Photo 12: The west side of the church, from the north-west (film 10, frame 1)



Photo 13: The west side of the church, from the south-west (film 11, frame 8)



Photo 15: Detail of basement window, west side of church (film 10, frame 4)





Photo 17: Walkway along east side of church, from the south (film 10, frame 16)



Photo 16: Detail of ground floor window, west side of church (film 10, frame 2)



Photo 19: South end of church, from the east (film 10, frame 11)



Photo 18: East side of rear rooms of church (film 10, frame 9)



Photo 20: South end of church, from the south-west (film 11, frame 9)



Photo 21: Detail of blind window re-used from the 1835 church, inscribed with date and name (film 10, frame 10)



Photo 22: Interior side of front entrance door (film 1, frame 16)



Photo 23: The recently enlarged church lobby, from the west (film 1, frame 15)



Photo 24: The recently enlarged church lobby, from the south-east (film 1, frame 13)



Photo 25: Doors to east side of gallery, from the north (film 2, frame 10)

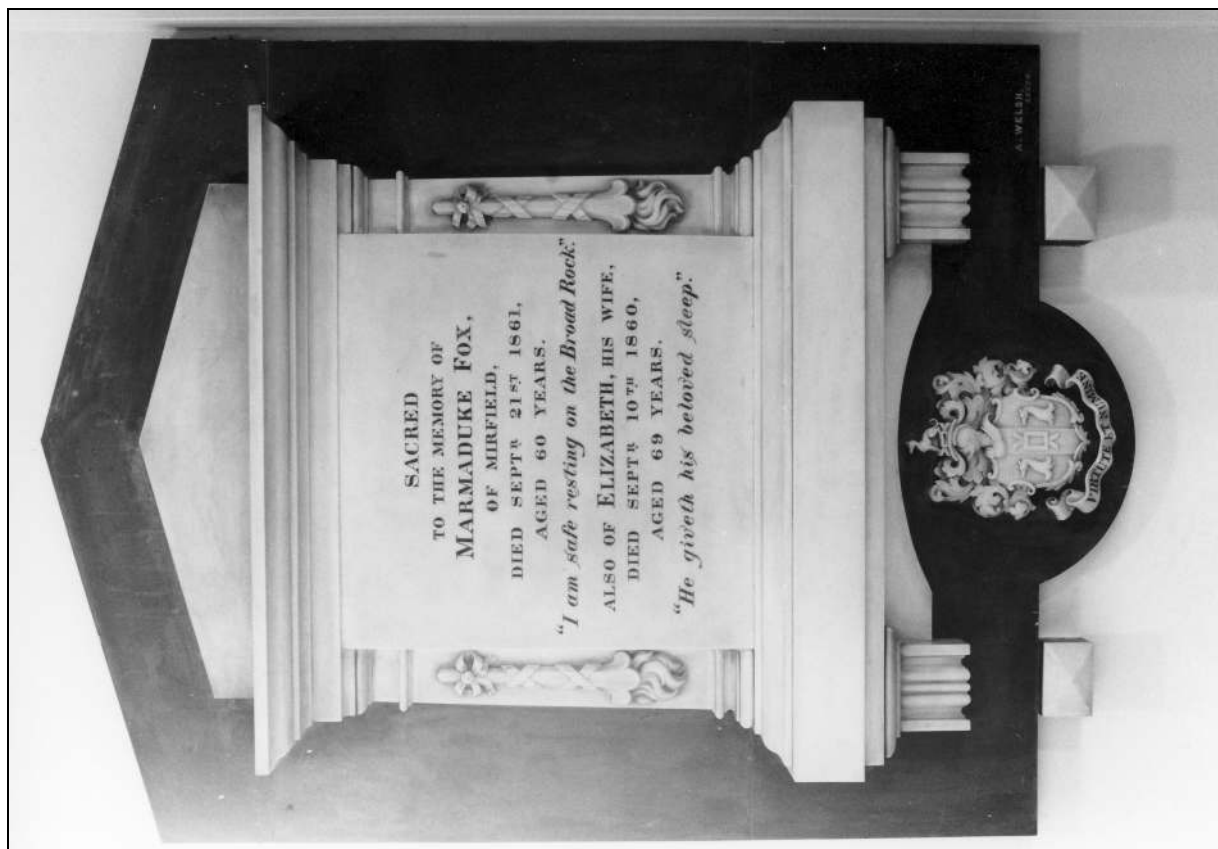


Photo 27: Memorial to Marmaduke Fox (d1861), on stairs to west side of gallery (film 1, frame 17)

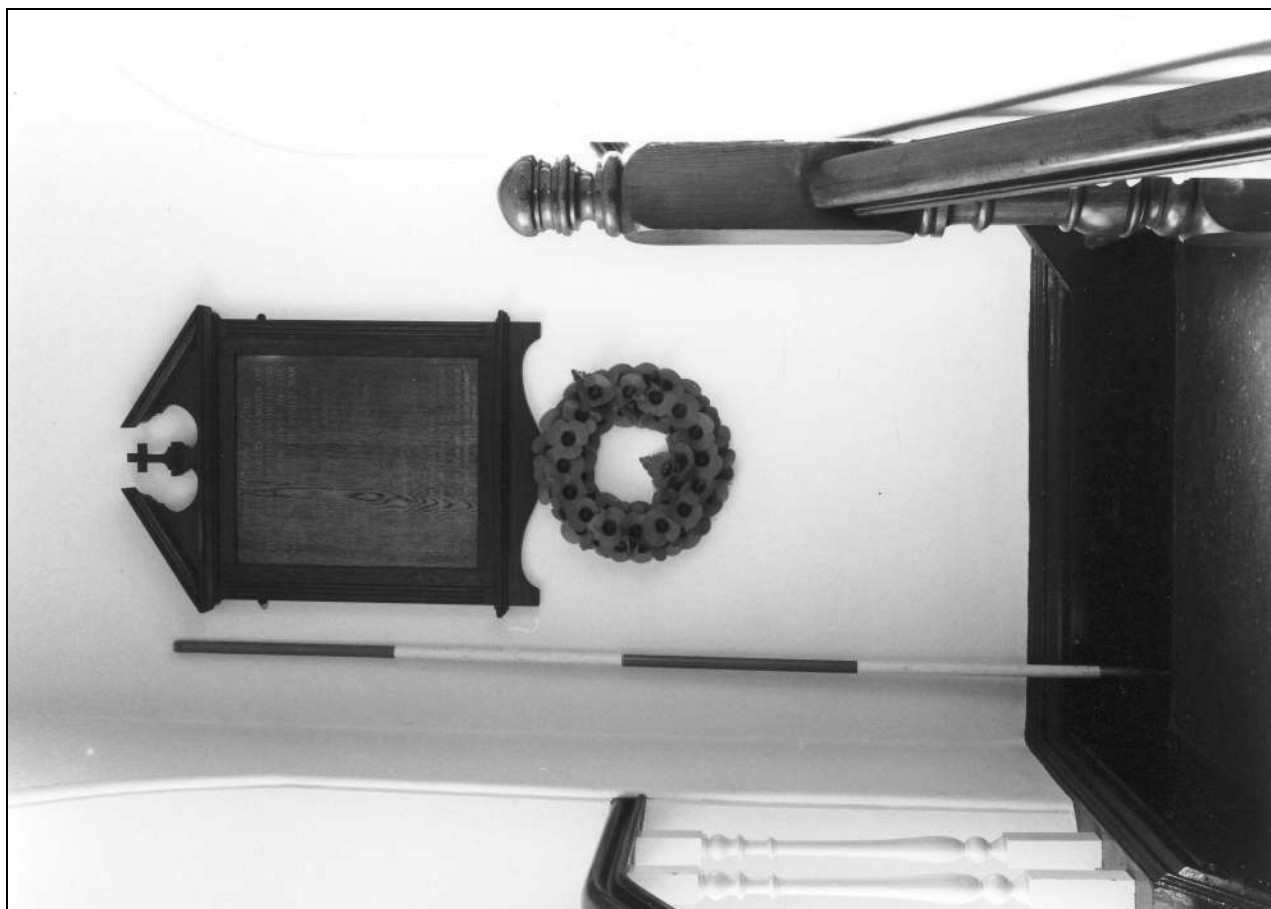


Photo 26: The war memorial, on stairs to east side of gallery (film 1, frame 18)



Photo 28: The ground floor of the church, from the north-east (film 2, frame 4)



Photo 29: The ground floor of the church, from the north-west (film 2, frame 5)



Photo 30: The ground floor of the church, from the north-east (film 2, frame 3)



Photo 31: The ground floor of the church, from the south-east (film 2, frame 7)



Photo 32: The ground floor of the church, from the south-west (film 2, frame 9)



Photo 33: The ground floor of the church, from the north side of the gallery (film 2, frame 12)



Photo 34: The ground floor of the church, from the rostrum at the south (minister's view) (film 6, frame 11)



Photo 35: Detail of pew end with number (film 3, frame 7)



Photo 36: Pews beneath east side of gallery, towards the east vestry (film 2, frame 1)



Photo 37: Memorial plaque on east vestry of 1920 (film 5, frame 12)



Photo 38: The west vestry of 1920 (film 6, frame 9)



Photo 39: Memorial plaque on west vestry of 1920 (film 5, frame 13)



Photo 40: Doorway into east vestry, from the north-east (film 6, frame 2)



Photo 41: Interior of east vestry, from the south-east (film 6, frame 1)



Photo 42: Interior of east vestry, from the south-east (film 6, frame 5)



Photo 43: Window in east vestry (film 6, frame 4)

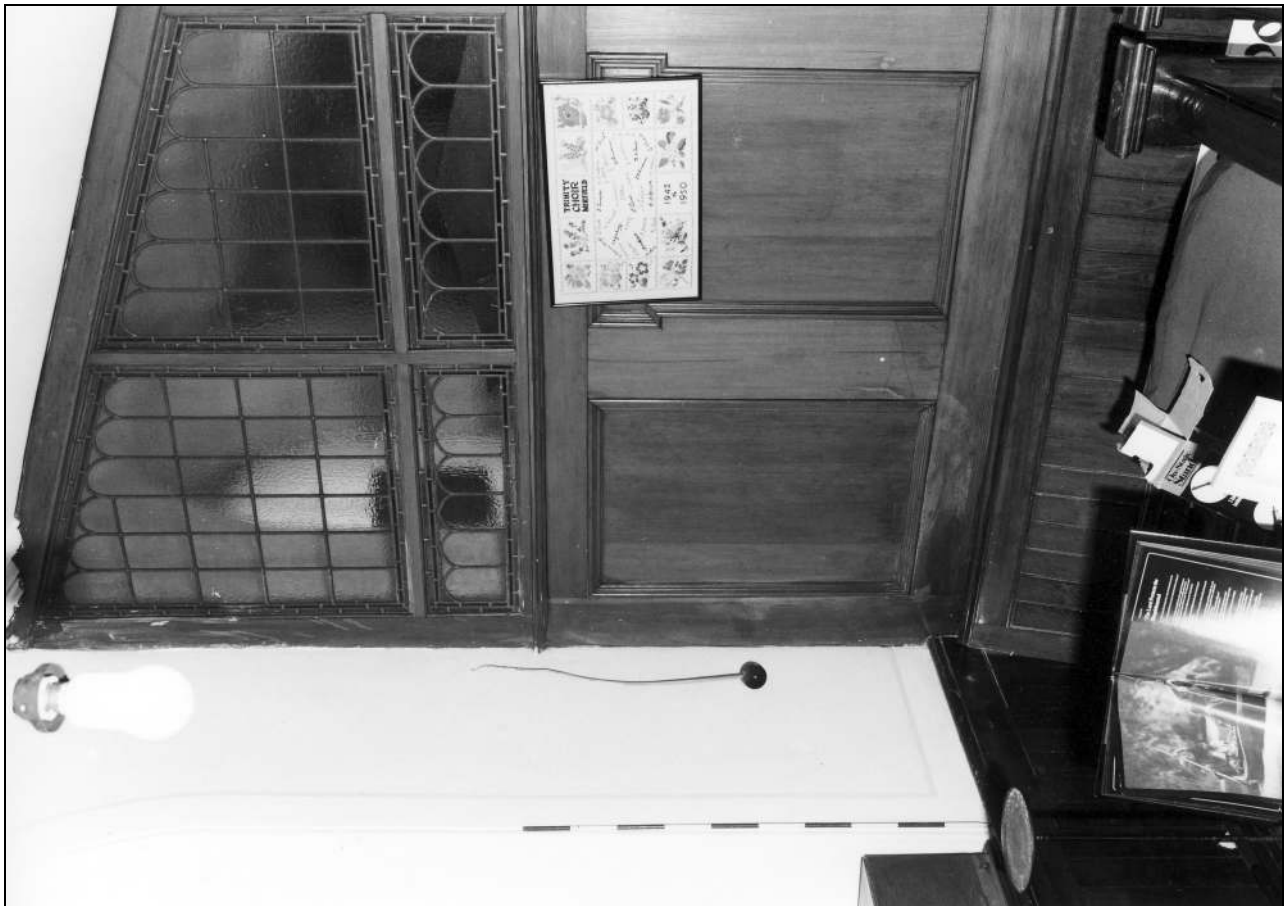


Photo 44: Interior of west vestry, from the south-east (film 6, frame 6)



Photo 45: Interior of west vestry, from the north-west (film 6, frame 7)



Photo 46: Memorial to Mrs Roberts, west side of church (film 5, frame 11)



Photo 47: Columns to west side of gallery, from the north (film 2, frame 6)



Photo 48: Detail of capital to column (film 3, frame 6)



Photo 49: Pews on east side of gallery, from the south (film 2, frame 17)



Photo 50: The gallery, from the south-east (film 2, frame 16)



Photo 51: The gallery, from the north-east (film 2, frame 13)



Photo 52: The gallery, from the north-west (film 2, frame 15)



Photo 53: Detail of windows in west side of gallery (film 3, frame 5)



Photo 54: Detail of windows and ceiling cornice over west side of gallery (film 3, frame 1)



Photo 55: The ceiling plasterwork, from the south-east (film 3, frame 4)

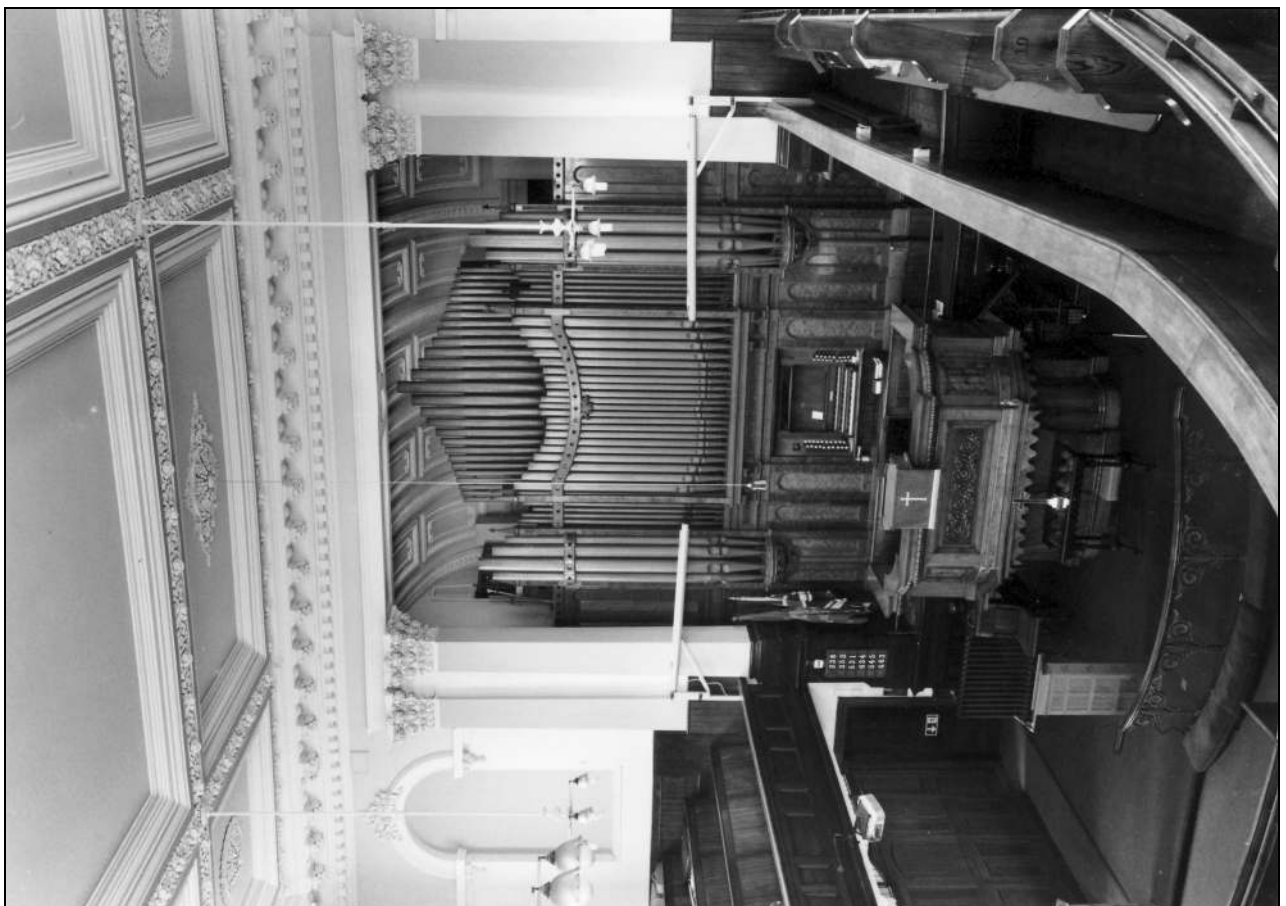


Photo 56: The organ recess and rostrum or pulpit, from the north-west (film 3, frame 2)



Photo 57: The organ recess and rostrum or pulpit, from the north (film 2, frame 11)



Photo 58: Coved ceiling to organ loft (film 5, frame 15)



Photo 59: Organ keyboard (film 6, frame 10)



Photo 61: Organ bellows, from the south-west (film 7, frame 1)



Photo 60: Former minister's vestry, now containing organ bellows, from the west (film 6, frame 18)



Photo 62: Cranks etc below organ bellows, from the west (film 7, frame 3)



Photo 63: Doors to west side of landing, now enclosing organ bellows (film 6, frame 17)



Photo 64: The rostrum or pulpit (film 5, frame 16)



Photo 65: The rostrum or pulpit (film 2, frame 18)



Photo 66: Stairs and balustrade to rostrum (film 5, frame 18)



Photo 67: Altar rail (film 5, frame 17)



Photo 68: Stairs down from church to basement (film 6, frame 16)



Photo 69: Landing at top of stairs to basement, from the west (film 6, frame 12)



Photo 70: Wash-hand basin for minister, south-east corner of church (film 6, frame 13)



Photo 71: Gas light fixture at top of stairs to basement (film 6, frame 15)



Photo 73: New outer basement door and entrance to wood store (right) (film 7, frame 6)

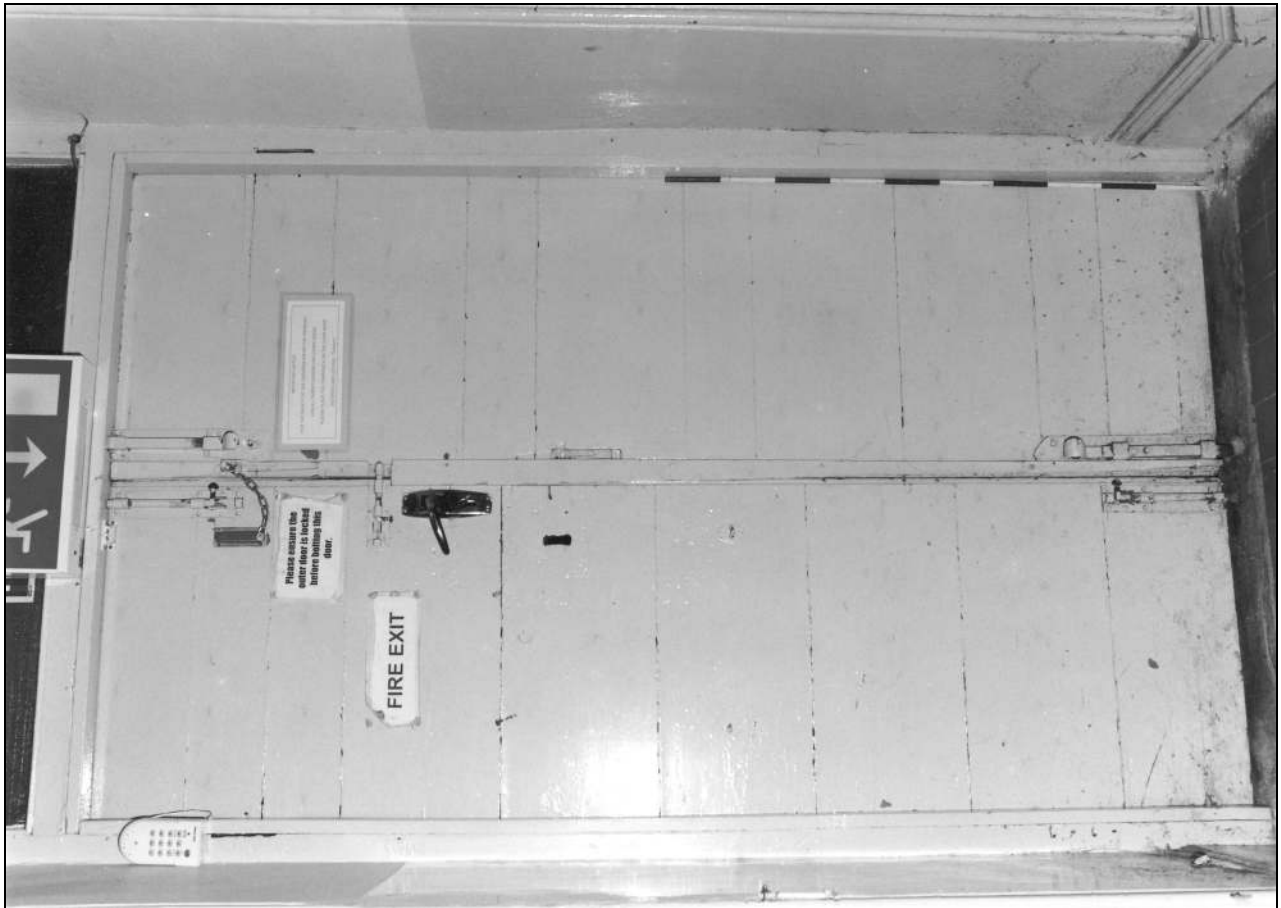


Photo 72: Doors from 1835 church re-used in south-east corner of basement (film 7, frame 7)



Photo 74: Blocked window, west side of church boiler room (film 7, frame 4)



Photo 75: Boiler room in church, from the north-east (film 7, frame 5)



Photo 77: Doorway to stairs from basement to church, from the north (film 7, frame 9)



Photo 76: Corridor in church basement, from the south (film 7, frame 10)

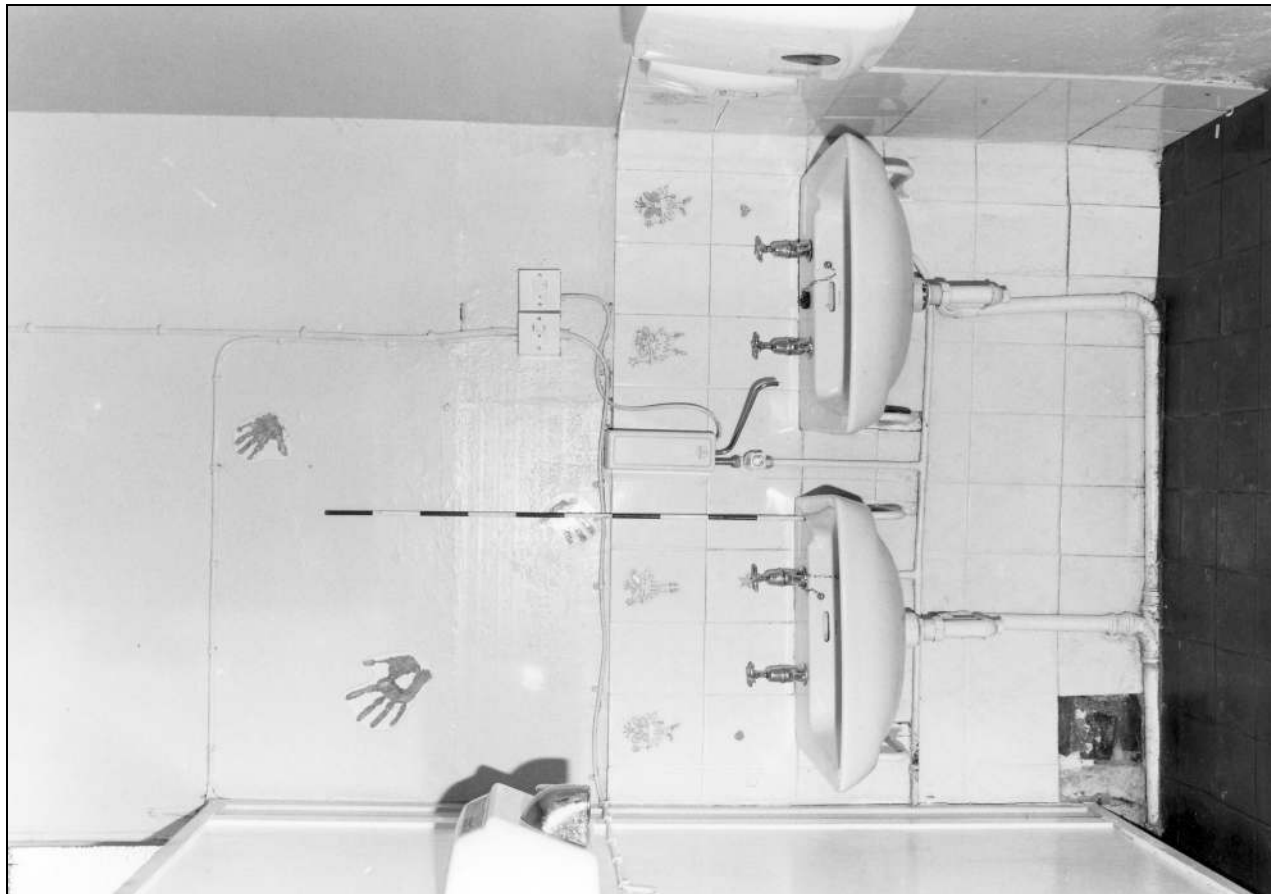


Photo 79: Blocked fireplace in former class room (now female WCs), church basement (film 7, frame 15)



Photo 78: Corridor in church basement, from the north, with doors to lecture room on right (film 7, frame 11)

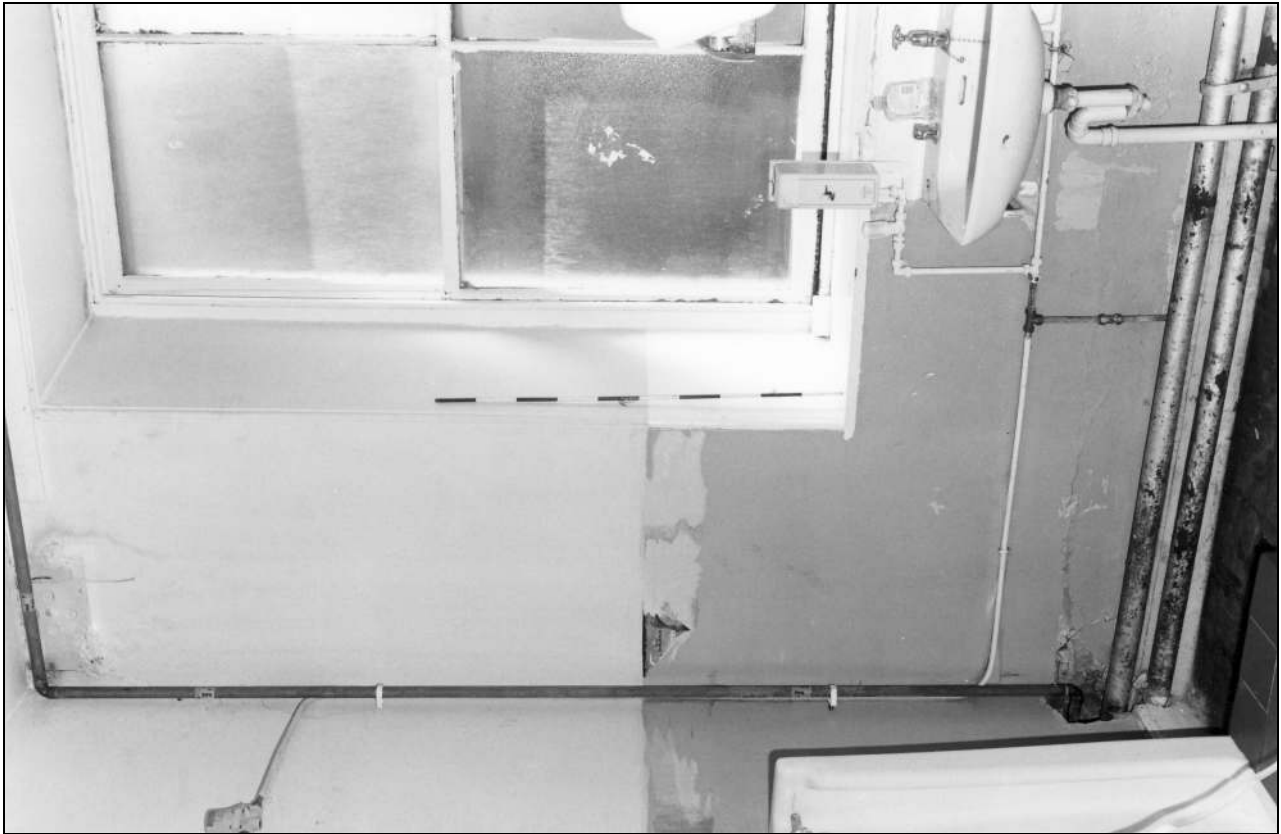


Photo 81: Former vestry (now male WCs), church basement
(film 7, frame 12)



Photo 80: Wall cupboards in former class room (now female WCs),
church basement (film 7, frame 14)



Photo 82: North-east room, church basement, from the south (altered since 1877) (film 7, frame 16)



Photo 83: North-east room, church basement, from the north-west (altered since 1877) (film 7, frame 18)



Photo 84: North-east room, church basement, from the north-east (altered since 1877) (film 7, frame 17)



Photo 85: Pews stored in church basement (film 8, frame 1)



Photo 86: Lecture room in church basement, from the south-east (film 8, frame 5)



Photo 87: Lecture room in church basement, from the south-west (film 8, frame 6)



Photo 88: Lecture room in church basement, from the north-east (film 8, frame 9)



Photo 89: Original doorway to lecture room in church basement, from the west (film 8, frame 7)



Photo 90: Lecture room in church basement: column (film 8, frame 10)



Photo 91: Modern passage contrived in south side of lecture room, from the west (film 8, frame 11)



Photo 92: Store in north-west corner of church basement, from the west (film 8, frame 4)



Photo 93: Store in north-west corner of church basement, from the east (film 8, frame 2)



Photo 95: Sunday school: front entrance (film 10, frame 18)



Photo 94: The Sunday school, from the south-east (film 11, frame 2)



Photo 96: Sunday school: window in east gable (film 10, frame 17)



Photo 97: Sunday school: south elevation (film 11, frame 3)



Photo 98: Sunday school, from the north-east (film 10, frame 13)



Photo 99: Sunday school: north elevation (film 10, frame 12)



Photo 100: Sunday school: typical window in north elevation (film 11, frame 16)



Photo 102: Sunday school: the early twentieth century extension at the west end (film 11, frame 6)



Photo 101: Sunday school: present doorway in north elevation (possibly former window) (film 10, frame 15)



Photo 103: Sunday school: south elevation with extension at left (film 11, frame 5)



Photo 104: Sunday school: south elevation, with extension at left (film 11, frame 4)



Photo 105: Sunday school: doorway to extension, north side (note blocked opening at ground level) (film 11, frame 14)



Photo 106: Sunday school, from the north-west (film 11, frame 12)



Photo 107: Sunday school, from the north-west (film 11, frame 11)



Photo 108: Memorial stones against west gable of Sunday school (film 11, frame 15)



Photo 109: Memorial stone to Asa and Henry Roberts (film 8, frame 15)



Photo 110: Memorial stone to Joseph & Elizabeth Sheard (film 8, frame 16)

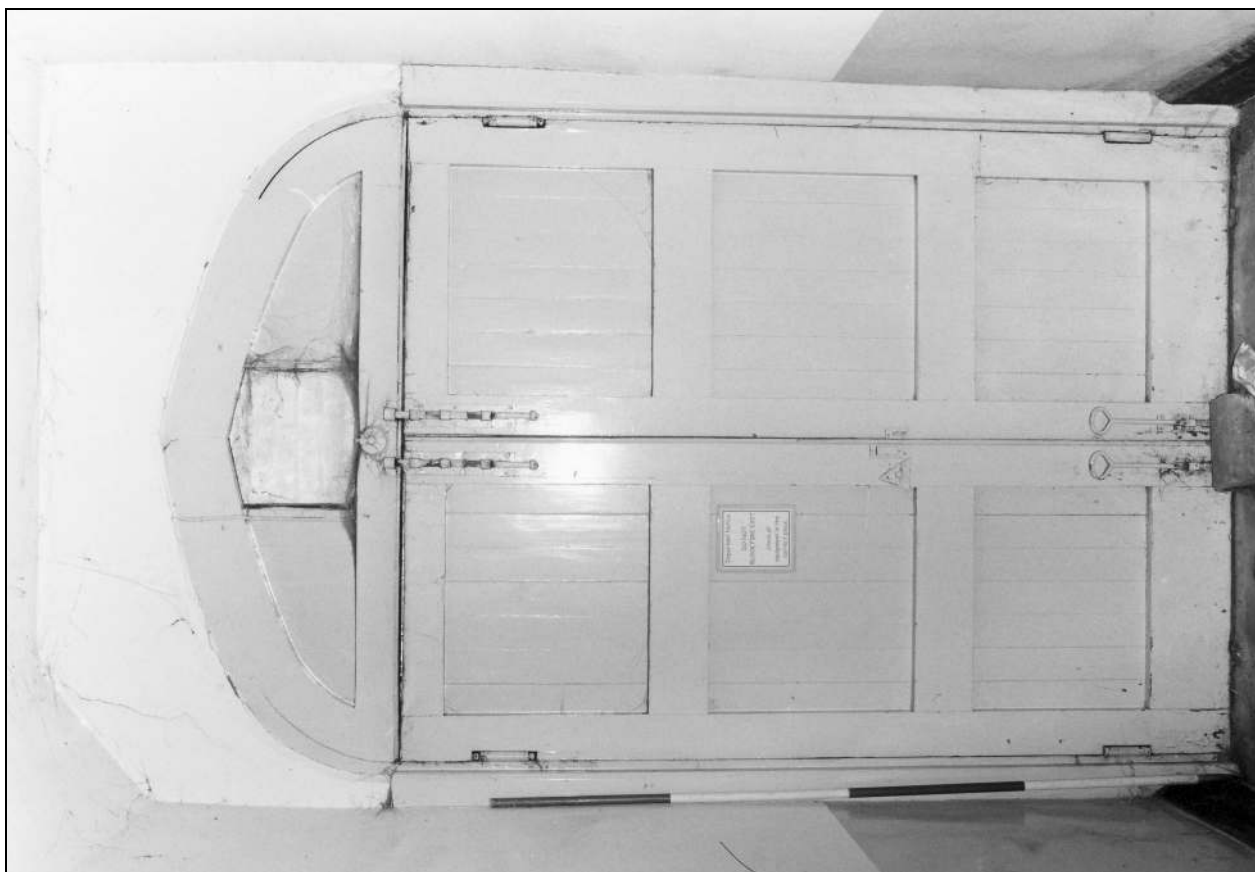


Photo 112: Interior view of Sunday school front doors (film 4, frame 6)



Photo 111: Memorial stone to George, Mary, Susan & Samuel Medley (film 8, frame 17)



Photo 114: Detail of door between lobby and vestibule, Sunday school (film 4, frame 9)



Photo 113: View up into lobby/vestibule from Sunday school entrance (film 4, frame 7)



Photo 115: Main school room, from the north-west (film 3, frame 12)



Photo 116: Main school room, from the south-west (film 3, frame 11)



Photo 117: Main school room, from the south-west (film 3, frame 10)



Photo 118: Main school room, from the south-east (film 3, frame 8)



Photo 119: Main school room, from the south-east (film 3, frame 17)



Photo 120: Main school room, from the north-west (film 3, frame 16)



Photo 121: Detail of arch braced truss in school room, from the west (film 4, frame 1)



Photo 122: Main school room: modern stage partition, from the south-east (film 3, frame 18)



Photo 123: Main school room: blocked fireplace in west wall, hidden by modern stage (film 4, frame 10)



Photo 124: Main school room: arch and recess at west side, from the south (film 5, frame 9)



Photo 125: Main school room: doorway to extension at south-west corner (film 4, frame 11)



Photo 126: Office in south-west extension, with doorway to school room at left (film 4, frame 13)



Photo 127: Office in south-west extension, from the south (film 4, frame 12)



Photo 128: Main school room, from the west, showing doorway and blocked doorway to room beneath south side of gallery (film 3, frame 13)



Photo 129: South room below Sunday school gallery, from the south (film 4, frame 4)



Photo 130: South room below Sunday school gallery, from the north (film 4, frame 5)



Photo 132: Hatch in north room below Sunday school gallery, from the south (film 4, frame 16)



Photo 131: Cupboard and blocked fireplace in south room below Sunday school gallery, from the west (film 4, frame 3)



Photo 133: North room below Sunday school gallery, from the north (film 4, frame 15)

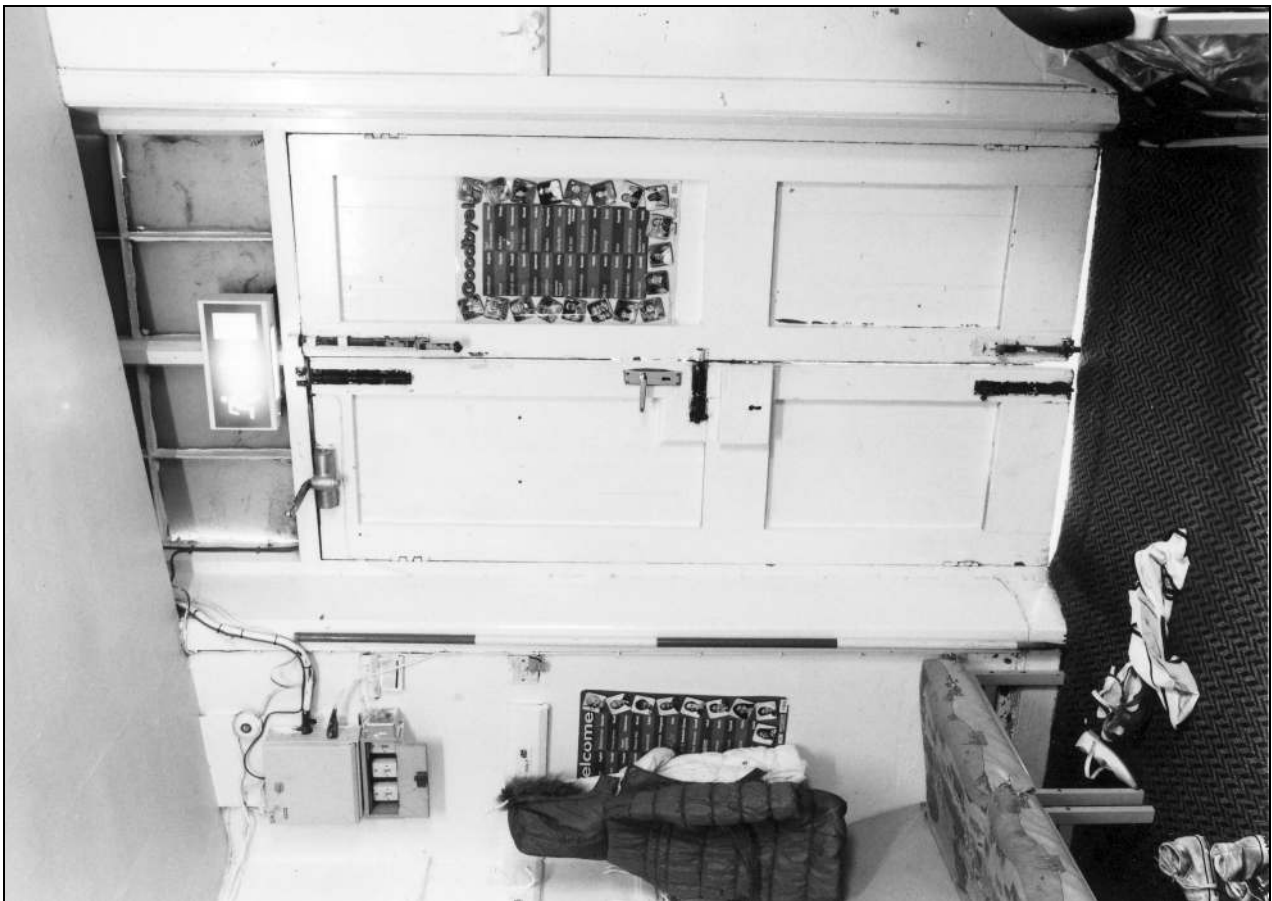


Photo 134: North room below Sunday school gallery, from the south, showing side entrance (film 4, frame 17)



Photo 135: Stairs to Sunday school gallery, from the north (film 5, frame 4)



Photo 136: Sunday school gallery with panelled parapet and shutters over, from the south-east (film 5, frame 1)



Photo 137: Sunday school gallery: south part, from the south (film 5, frame 5)

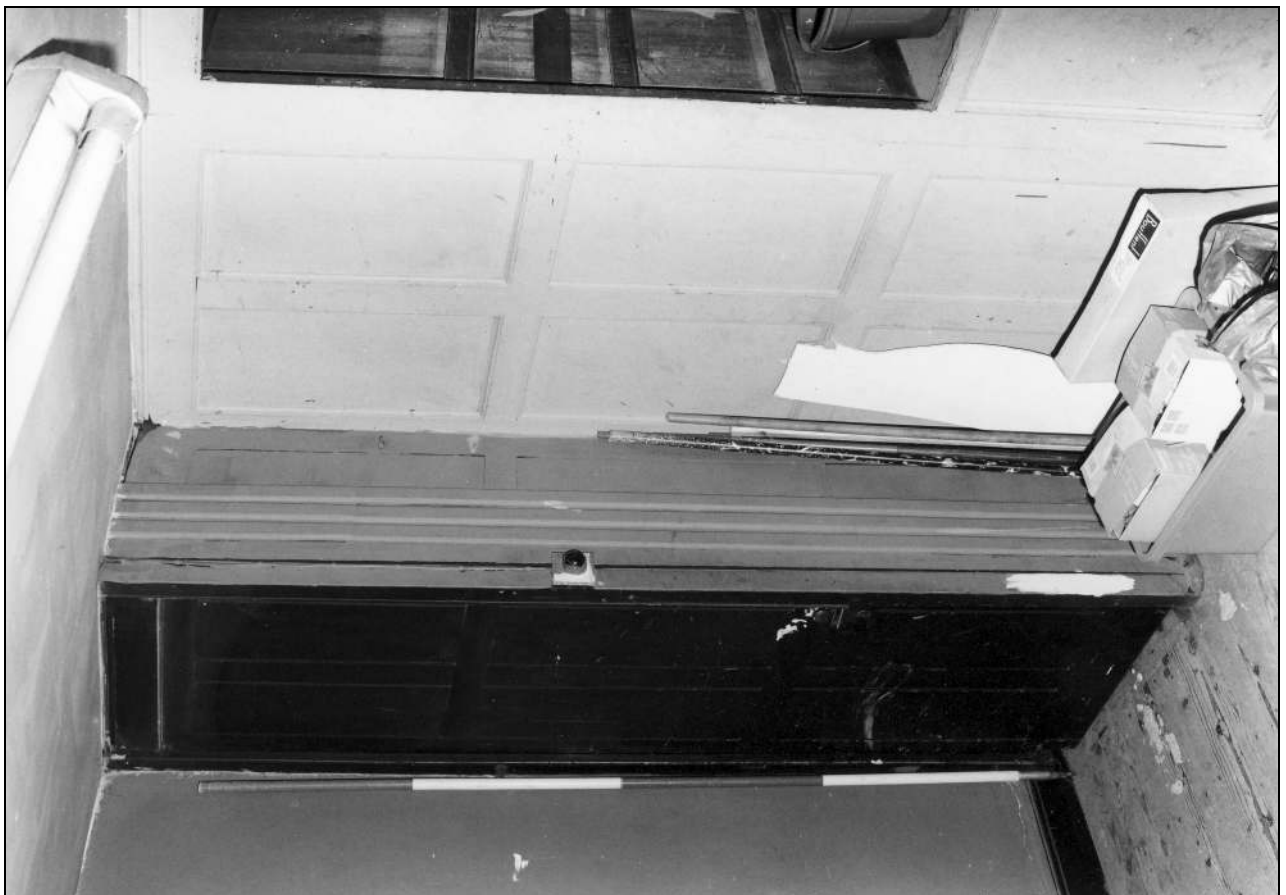


Photo 138: Sunday school gallery: north part, from the north-west (film 4, frame 18)



Photo 139: Sunday school gallery: south part, from the north (film 5, frame 6)

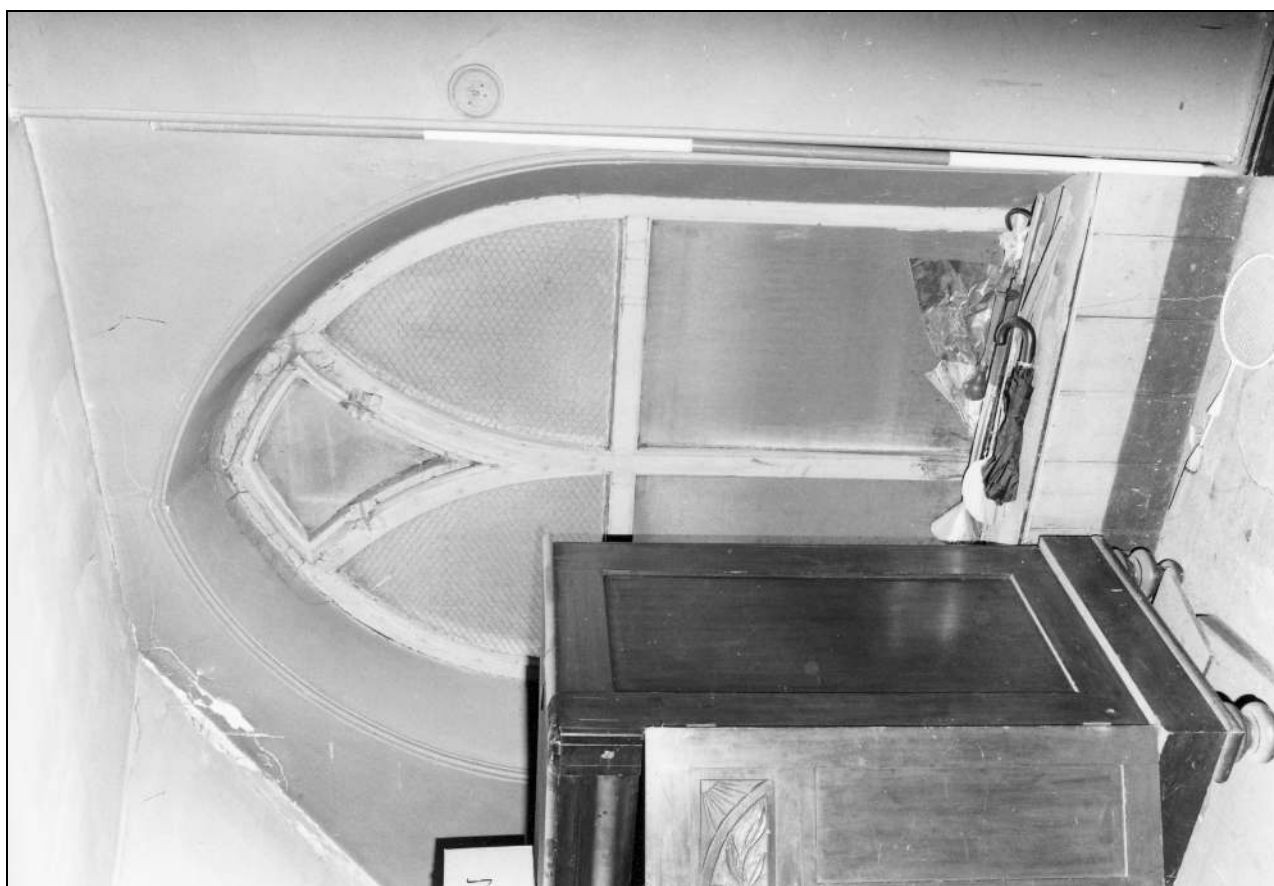


Photo 140: Sunday school gallery: upper part of east window (film 5, frame 3)



Photo 141: Modern link between church and Sunday school, from the north-west (film 10, frame 5)



Photo 142: Passage in modern link between church and Sunday school, from the south (film 8, frame 12)



Photo 143: Kitchen in modern link between church and Sunday school, from the north (film 8, frame 13)



Photo 144: Window in north side of Sunday school, blocked for modern link to church (film 5, frame 10)