

Photo 1: General view of the site from the north-west, along the canal (film 8, frame 15)

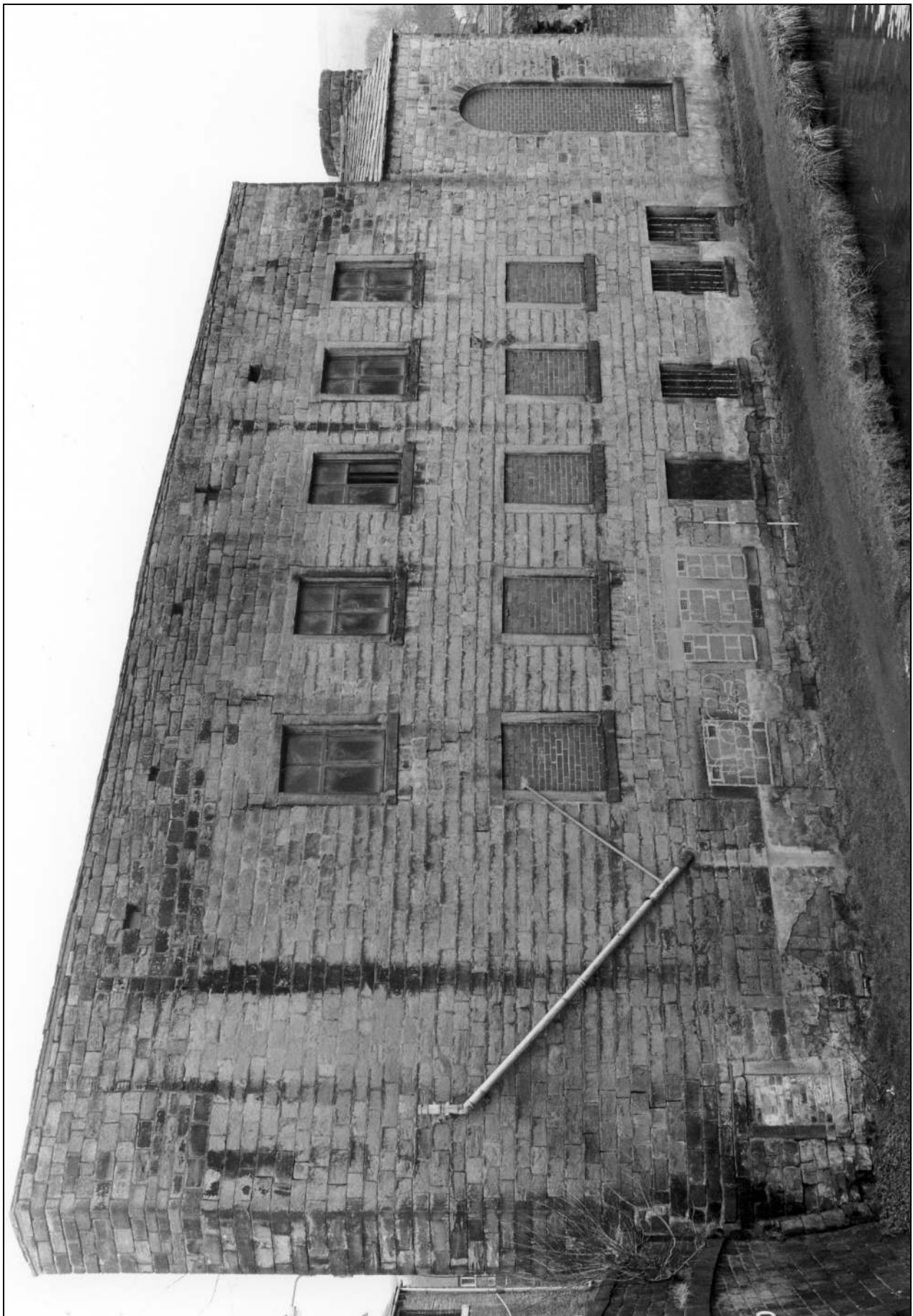


Photo 2: North elevation of the spinning mill and engine house (film 8, frame 4)

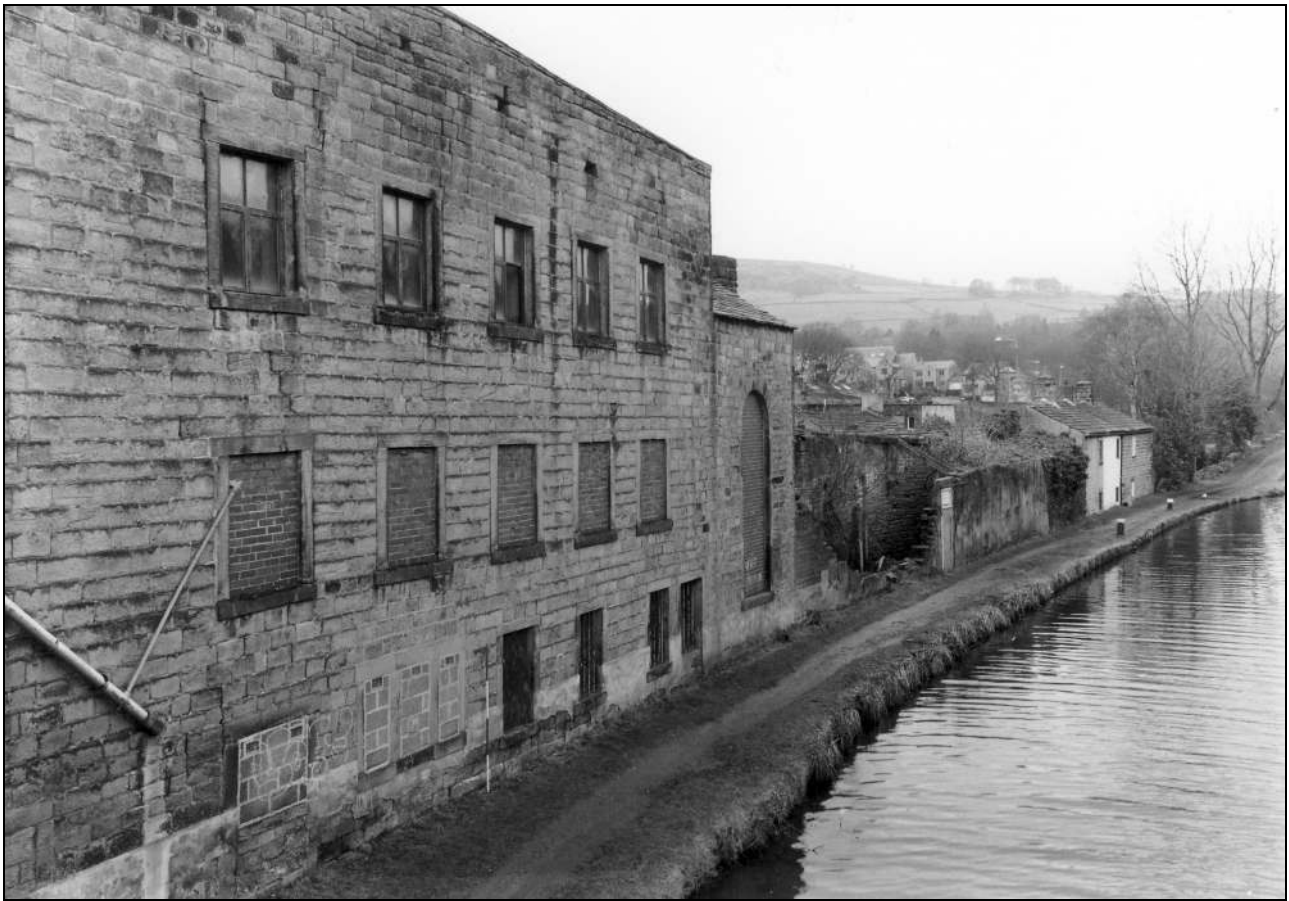


Photo 3: Spinning mill, engine and boiler houses, from the north-east (film 8, frame 5)



Photo 4: Spinning mill, engine and boiler houses, from the north-east, across Broadbottom Bridge (film 8, frame 6)





Photo 5: North-east corner of spinning mill, adjoining canal bridge  
(film 5 frame 9)

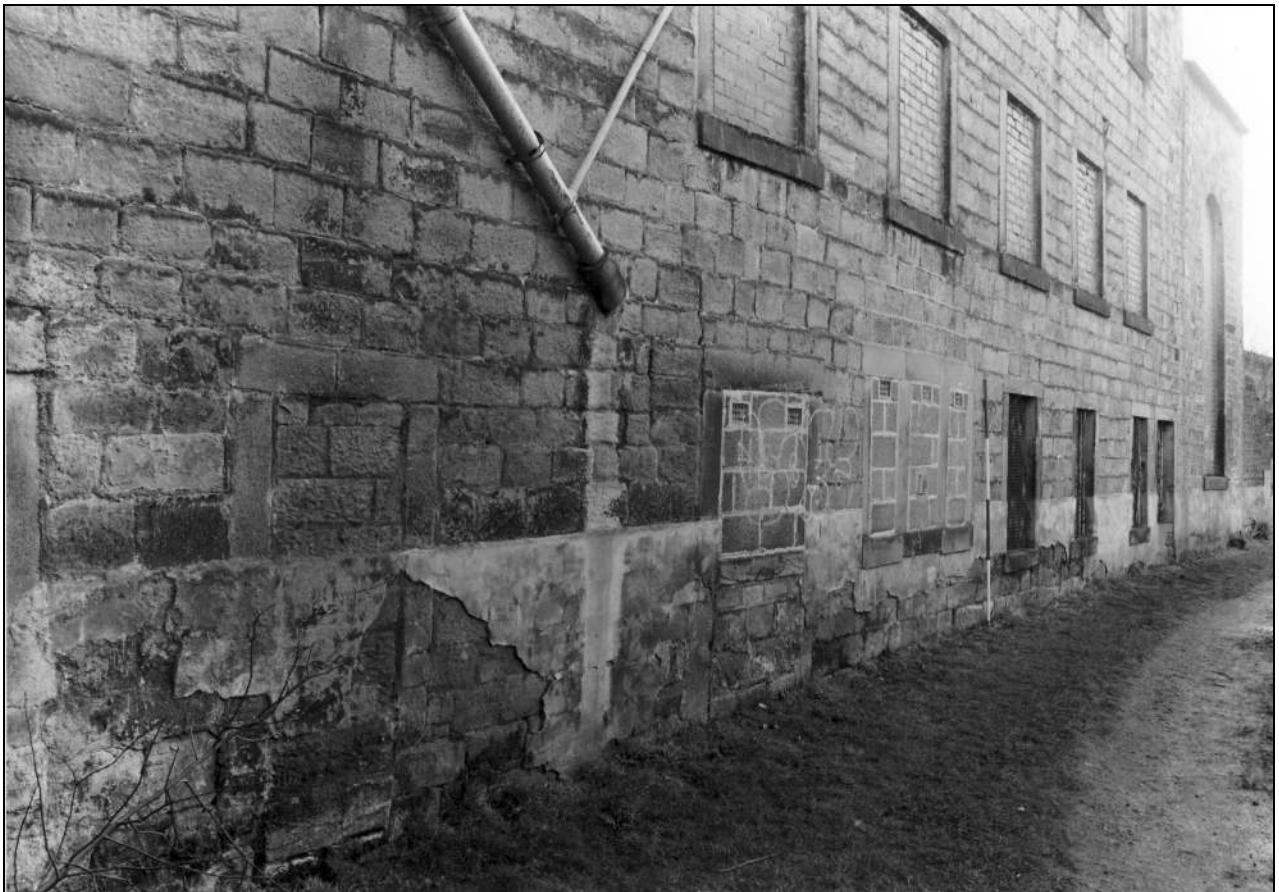


Photo 6: Ground floor of spinning mill, north elevation (film 5, frame 7)



Photo 8: Detail of first and second floor windows in spinning mill, north elevation (film 8, frame 8)



Photo 7: Detail of ground floor windows in spinning mill, north elevation (film 5, frame 10)

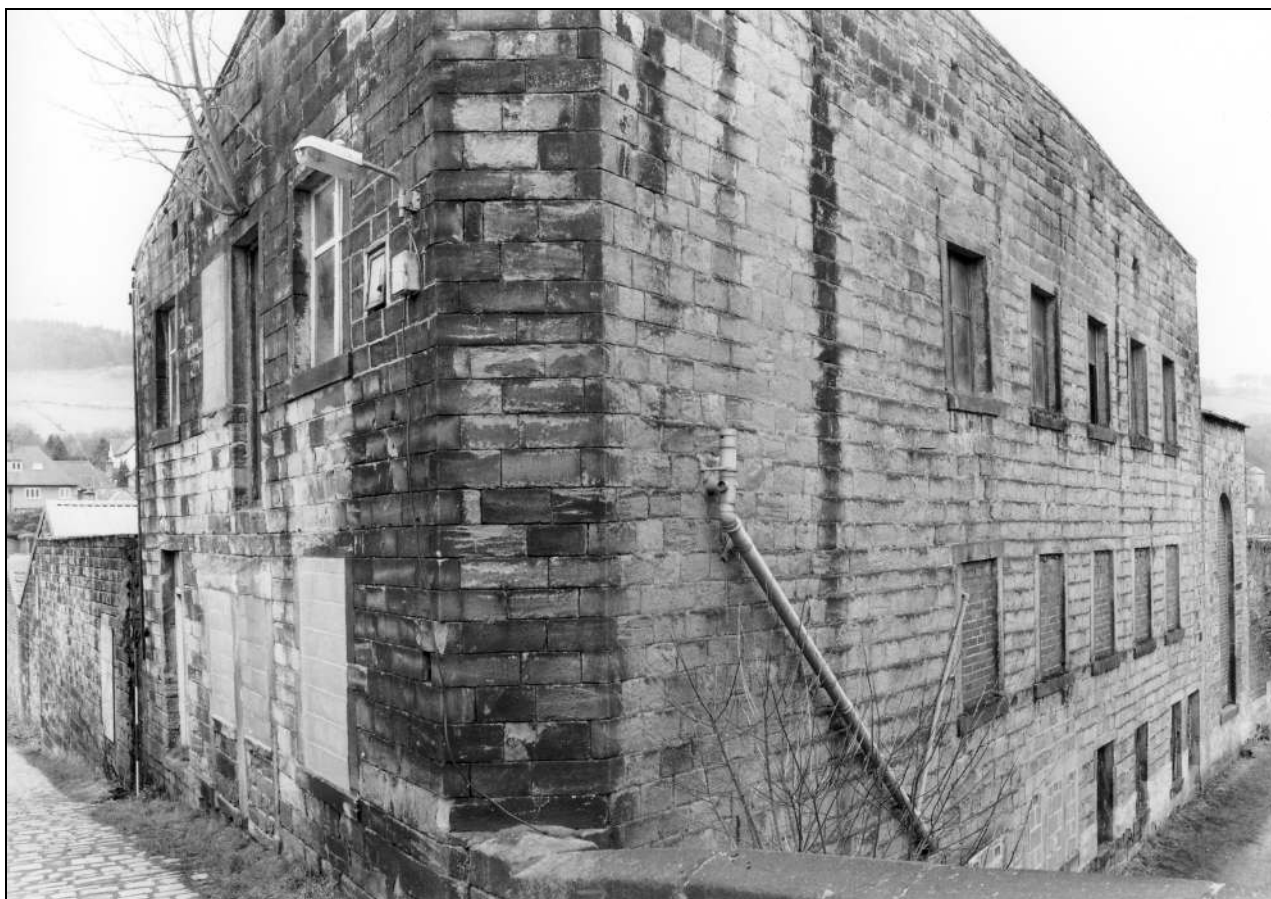


Photo 9: North-east corner of spinning mill, from across Bings Road (film 8, frame 16)



Photo 10: First floor openings in east elevation of spinning mill, from across Bings Road (film 8, frame 18)



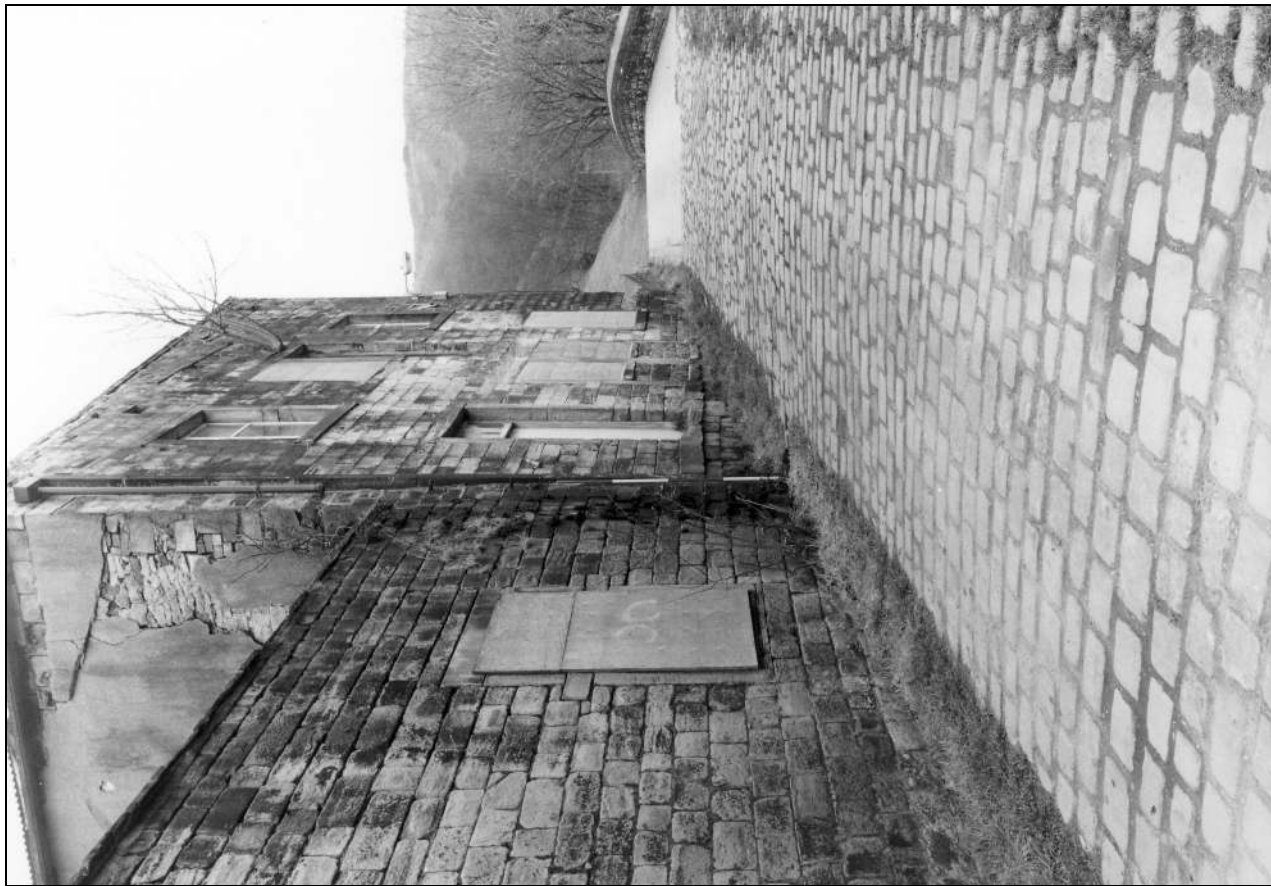


Photo 12: East elevation of spinning mill, from the south-east (film 9, frame 3)



Photo 11: East elevation of spinning mill, from the north-east (film 8, frame 17)



Photo 13: The spinning mill, from the south-east, during demolition (film 10, frame 7)

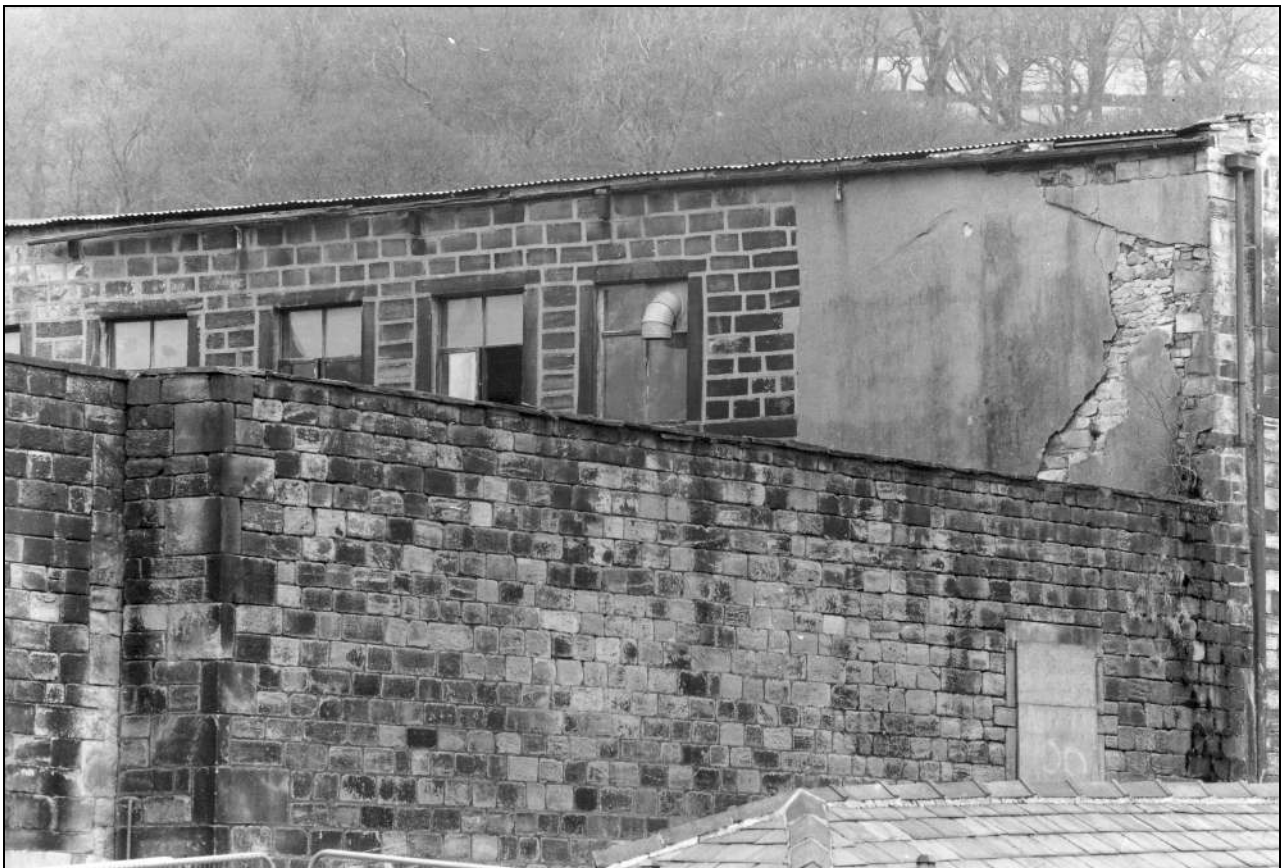


Photo 14: South elevation of spinning mill, from the south-east, showing roof line of demolished south-east wing (film 9, frame 7)





Photo 15: Ground floor openings, south elevation of spinning mill (film 2, frame 7)



Photo 16: The spinning mill, from the south-west, during demolition (film 10, frame 6)



Photo 17: Ground floor openings, south elevation of spinning mill (film 4, frame 9)



Photo 18: Ground floor openings, south elevation of spinning mill (film 2, frame 9)



Photo 19: Detail of ground floor window opening, south elevation of spinning mill (film 2, frame 10)

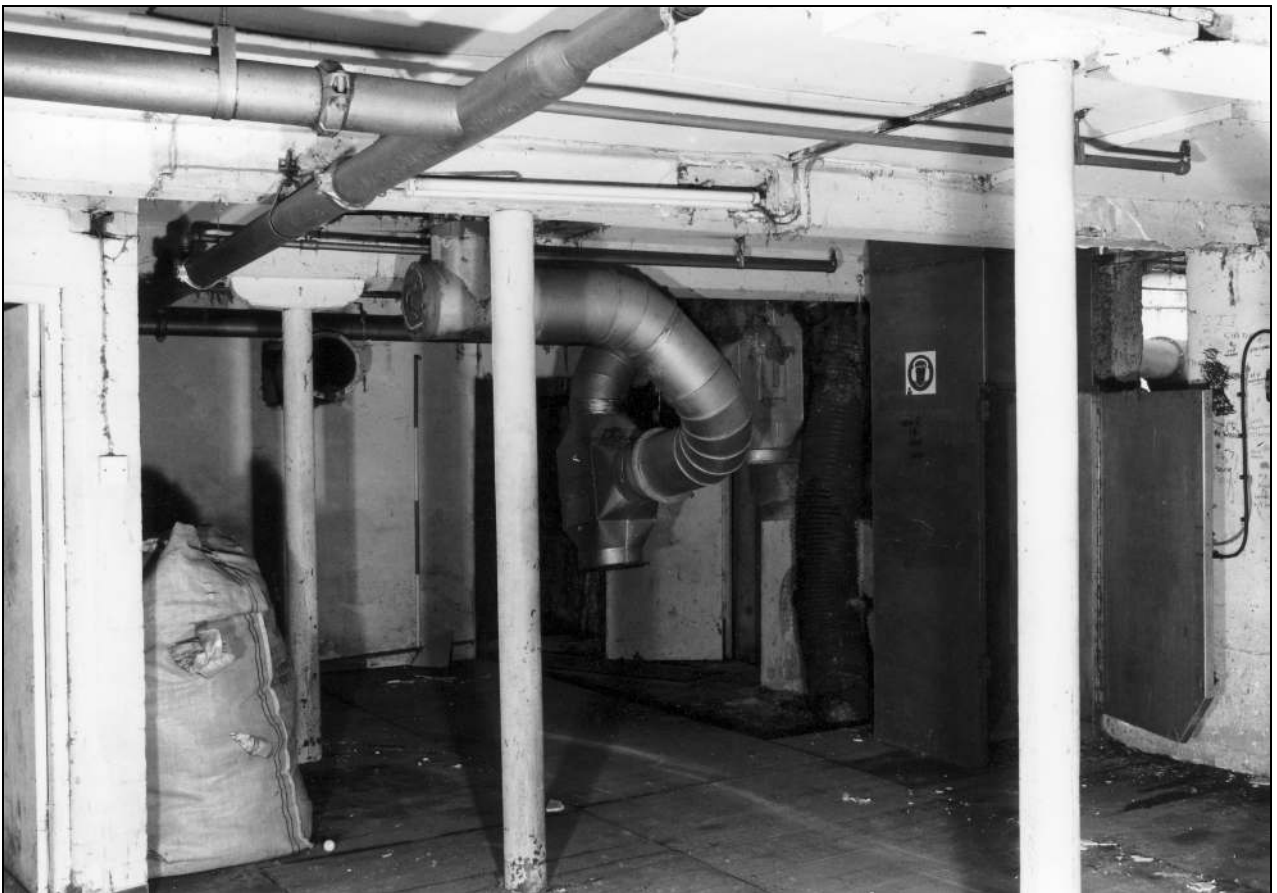


Photo 20: Ground floor of spinning mill, from the north-west (film 7, frame 1)





Photo 21: Ground floor of spinning mill, from the north (film 6, frame 18)



Photo 22: Ground floor of spinning mill, from the east (film 6, frame 17)



Photo 23: Ground floor of spinning mill, from the south-west (film 6, frame 16)

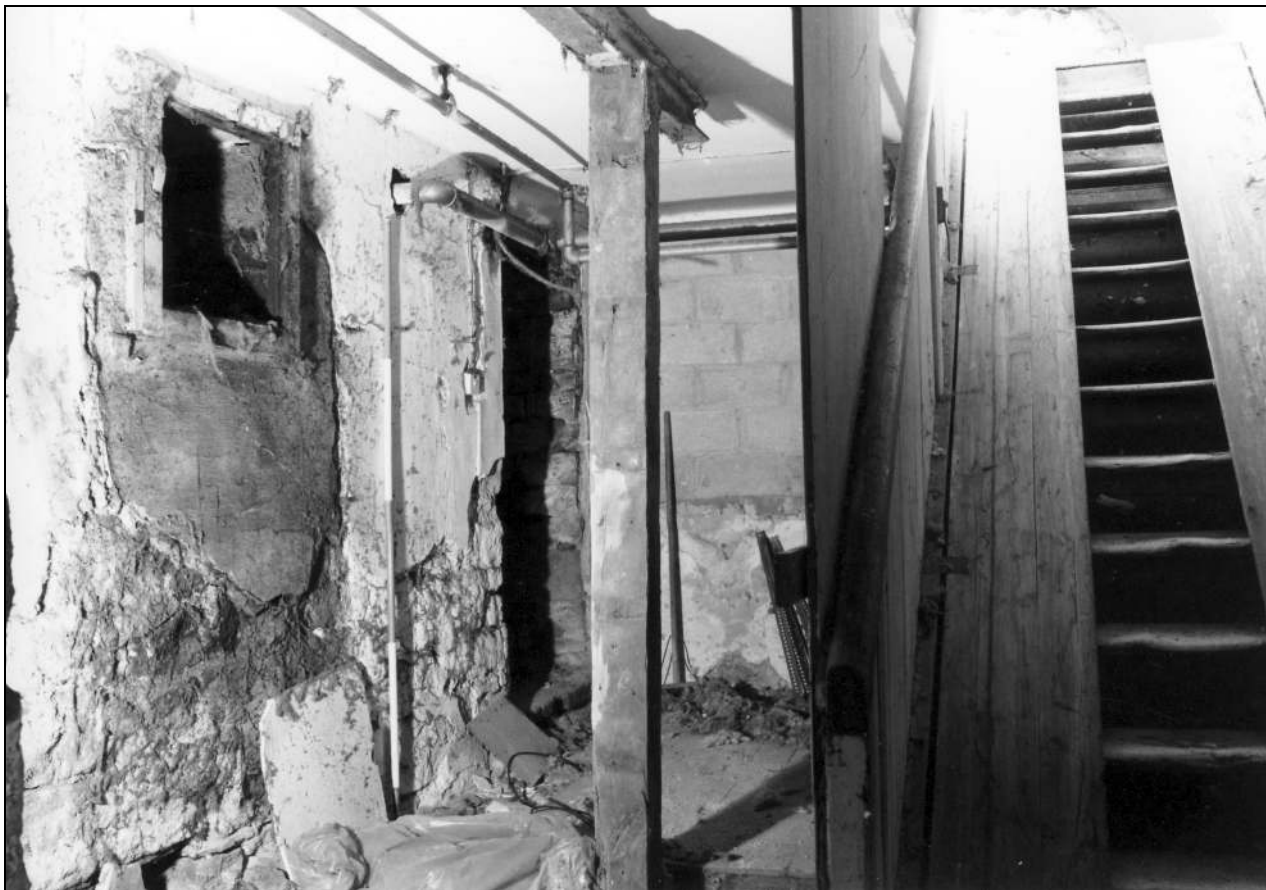


Photo 24: Ground floor of spinning mill, showing wall box and doorway to engine house, and stairs, from the south-east (film 6, frame 15)



Photo 25: Stairs up to first floor of spinning mill, from the south (film 3, frame 13)



Photo 26: Fireproof room in east end of spinning mill (ground floor), from the south-east (film 7, frame 3)





Photo 27: Fireproof room in east end of spinning mill (ground floor), from the north-east (film 7, frame 6)

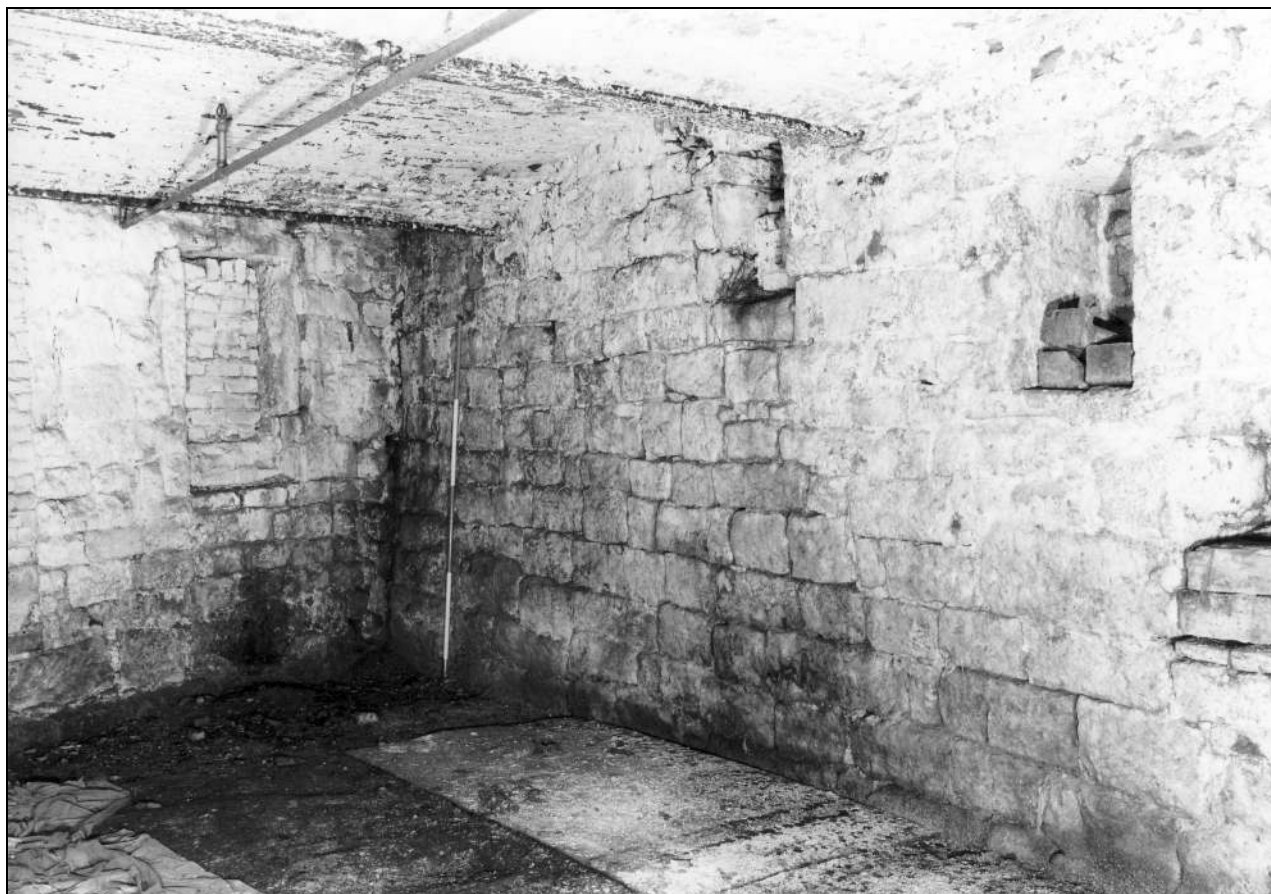


Photo 28: Fireproof room in east end of spinning mill (ground floor), from the south-west (film 7, frame 4)



Photo 29: Fireproof room in east end of spinning mill (ground floor), from the north-west (film 7, frame 5)



Photo 30: Fireproof room in east end of spinning mill (ground floor): detail of brick jack arches etc (film 7, frame 7)



Photo 31: First floor of spinning mill, from the south-west (film 3, frame 15)



Photo 32: First floor of spinning mill, from the north-west (film 4, frame 4)





Photo 33: First floor of spinning mill, with stairs to second floor, from the south-east (film 3, frame 12)



Photo 34: First floor of spinning mill, from the south-east, showing fireplace (film 4, frame 1)



Photo 35: First floor of spinning mill: west wall, showing shaft bracket etc (film 3, frame 11)

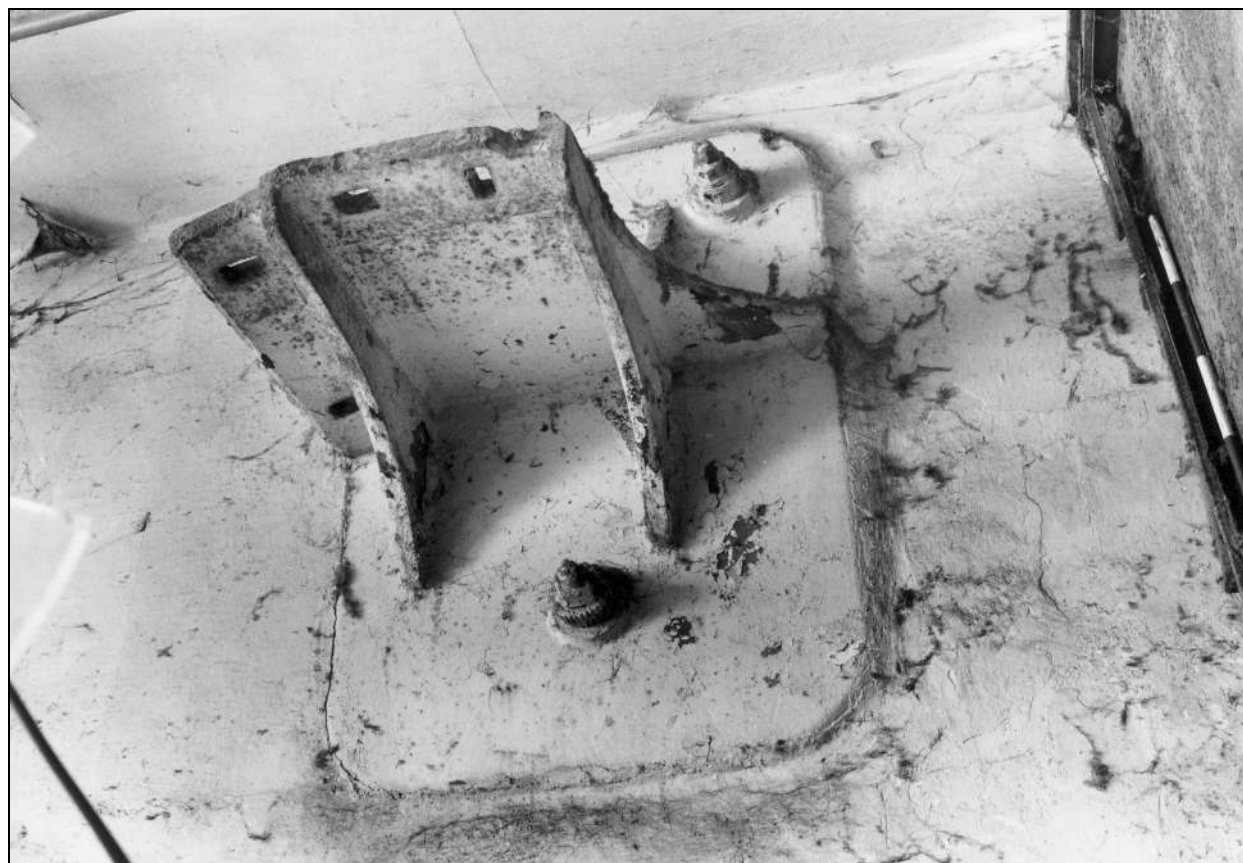


Photo 36: First floor of spinning mill: detail of shaft bracket in west wall (film 3, frame 9)



Photo 37: First floor of spinning mill: detail of shaft bracket in west wall (film 3, frame 7)



Photo 38: First floor of spinning mill, from the north-east (film 4, frame 2)





Photo 39: First floor of spinning mill: detail of fireplace in north-east corner (film 3, frame 17)



Photo 40: First floor of spinning mill, from the south-west (film 7, frame 11)

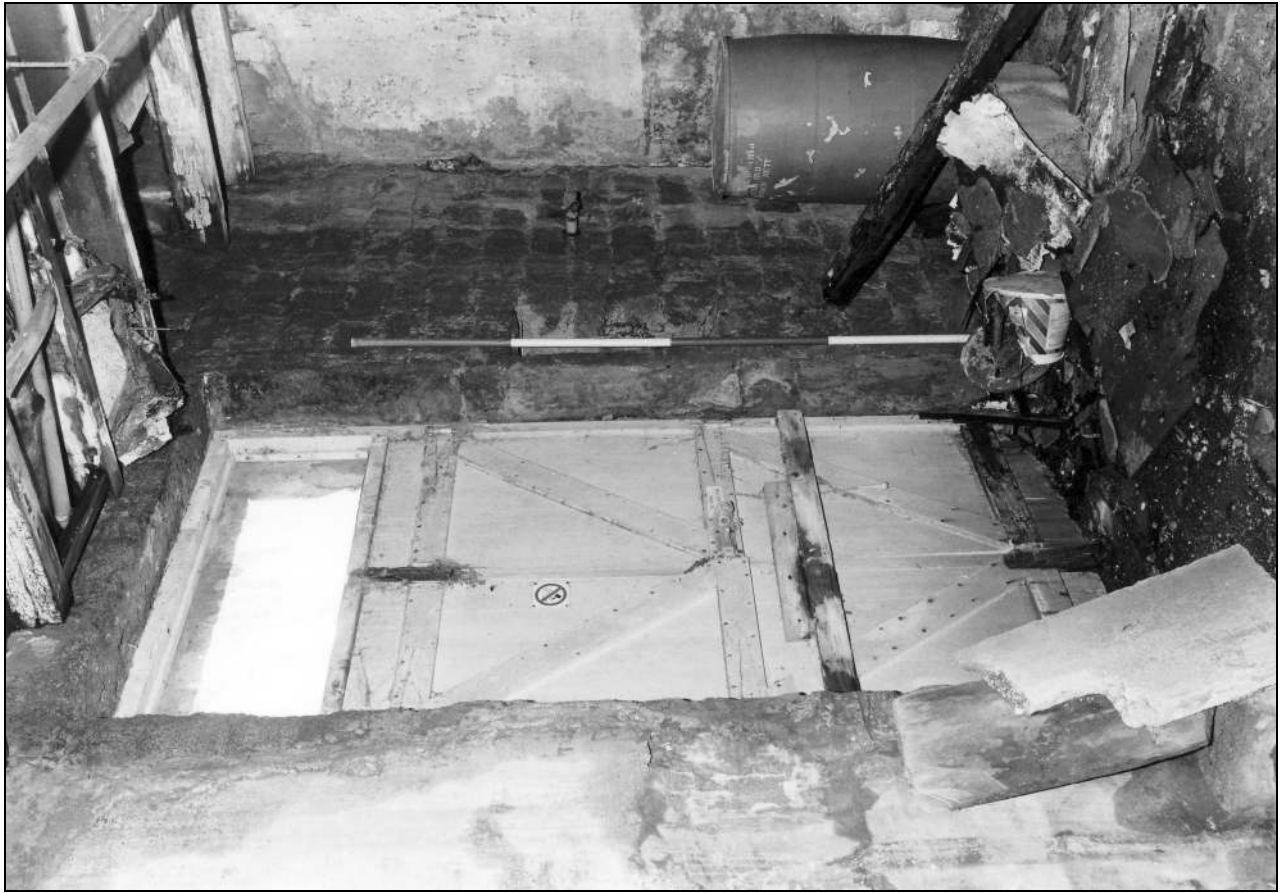


Photo 41: First floor of spinning mill: detail of secondary taking-in doorway, south-east corner (film 3, frame 18)



Photo 42: First floor of spinning mill, from the east (film 7, frame 10)



Photo 43: Second floor of spinning mill, from the south-west, showing modern partitions (film 4, frame 7)



Photo 44: Second floor of spinning mill, from the south-west, showing underside of third floor and tie beam with strap (film 4, frame 5)



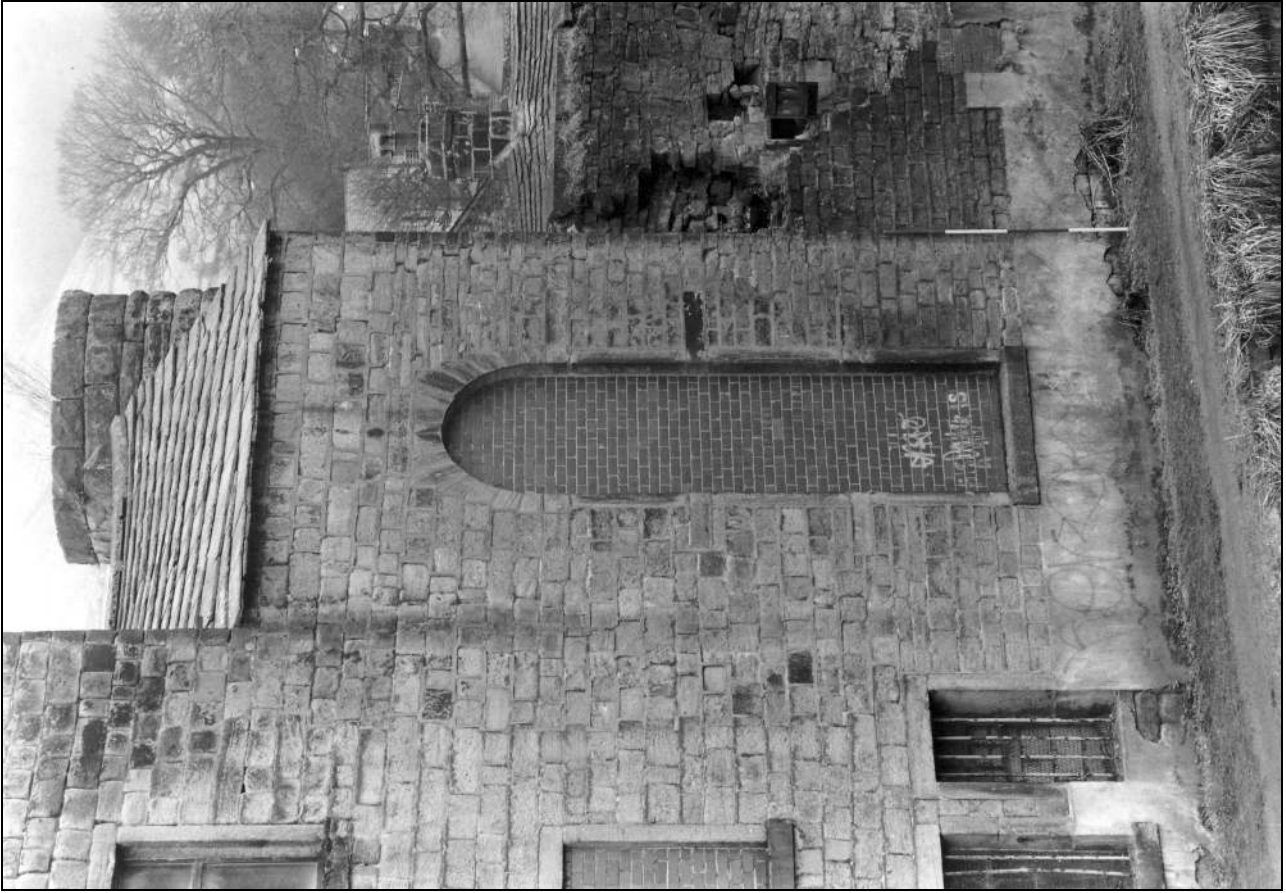


Photo 46: The engine house and remains of the chimney, from the north-east (film 8, frame 9)



Photo 45: Second floor of spinning mill, from the north-east, showing underside of third floor (film 4, frame 6)