

Photo 47: The engine house and remains of the chimney, from the north-west (film 8, frame 12)



Photo 48: The engine house and remains of the chimney, from the north-west (film 8, frame 11)

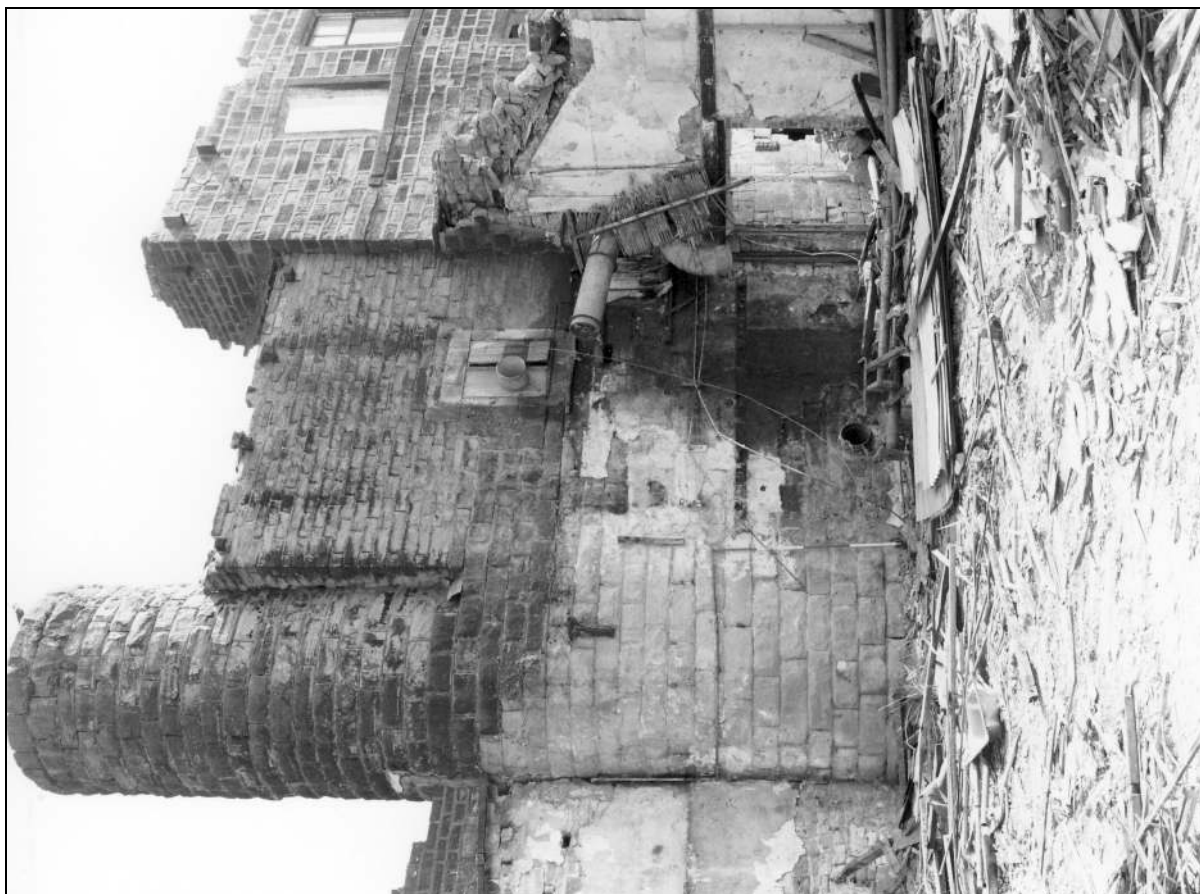


Photo 49: The engine house and chimney, from the south-west, during demolition (film 10, frame 3)



Photo 50: Foot of the chimney and engine house, from the south-west within the weaving shed (film 1, frame 11)



Photo 51: Foot of chimney and remains of east end of boiler house, from the west (film 5, frame 3)



Photo 52: Interior of engine house: south side, showing flywheel bearing and openings for fastening rods (film 6, frame 1)



Photo 53: Interior of engine house: south side, showing openings for fastening rods (film 5, frame 18)



Photo 54: Interior of engine house: south side, showing (later?) bearing to weaving shed and openings for fastening rods (film 5, frame 17)



Photo 55: South elevation of engine house, showing flywheel bearing in centre (film 10, frame 1)

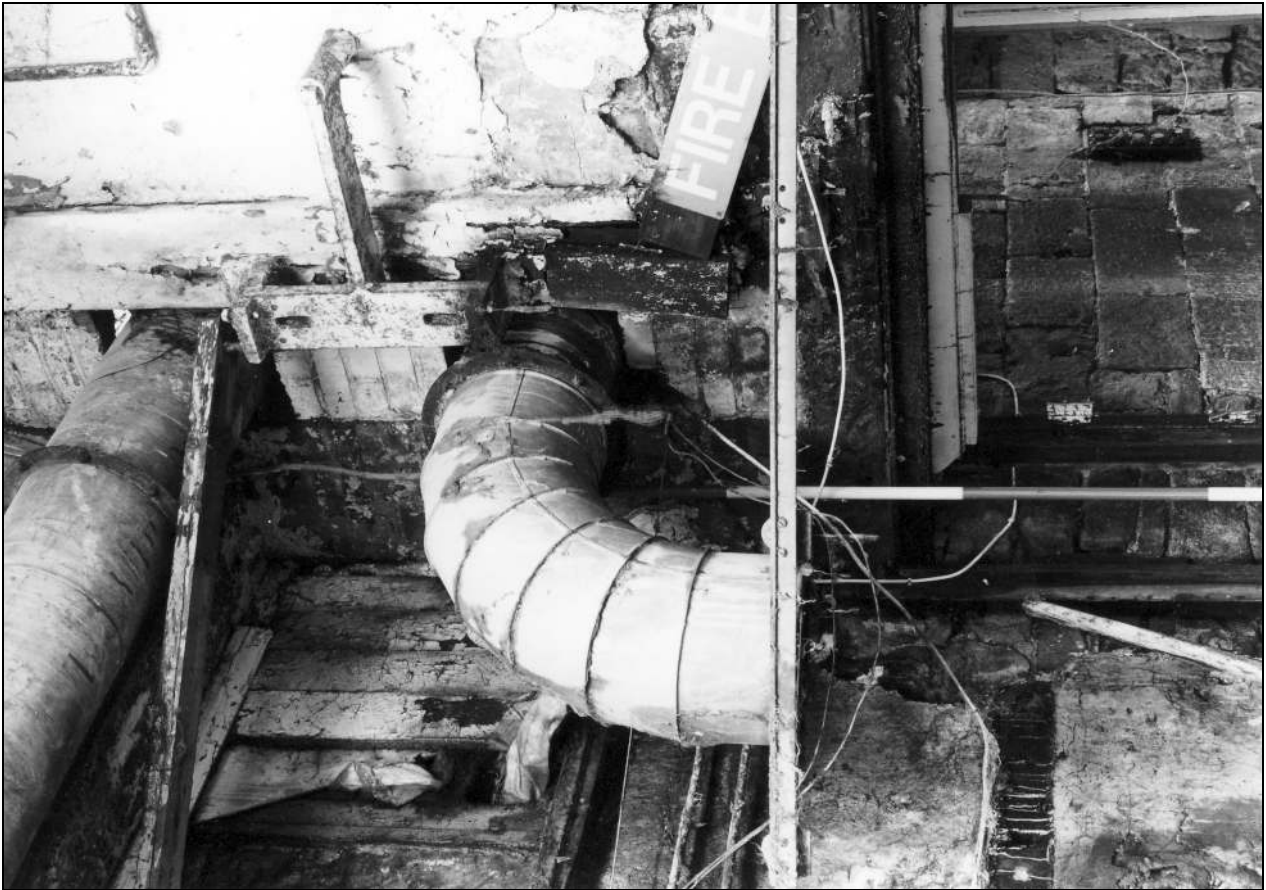


Photo 56: North-east corner of weaving shed, showing bearing from engine house and bracket for main shaft (film 1, frame 17)



Photo 57: Interior of engine house: south-west corner, showing remains of decoration and grease from flywheel (film 6, frame 3)

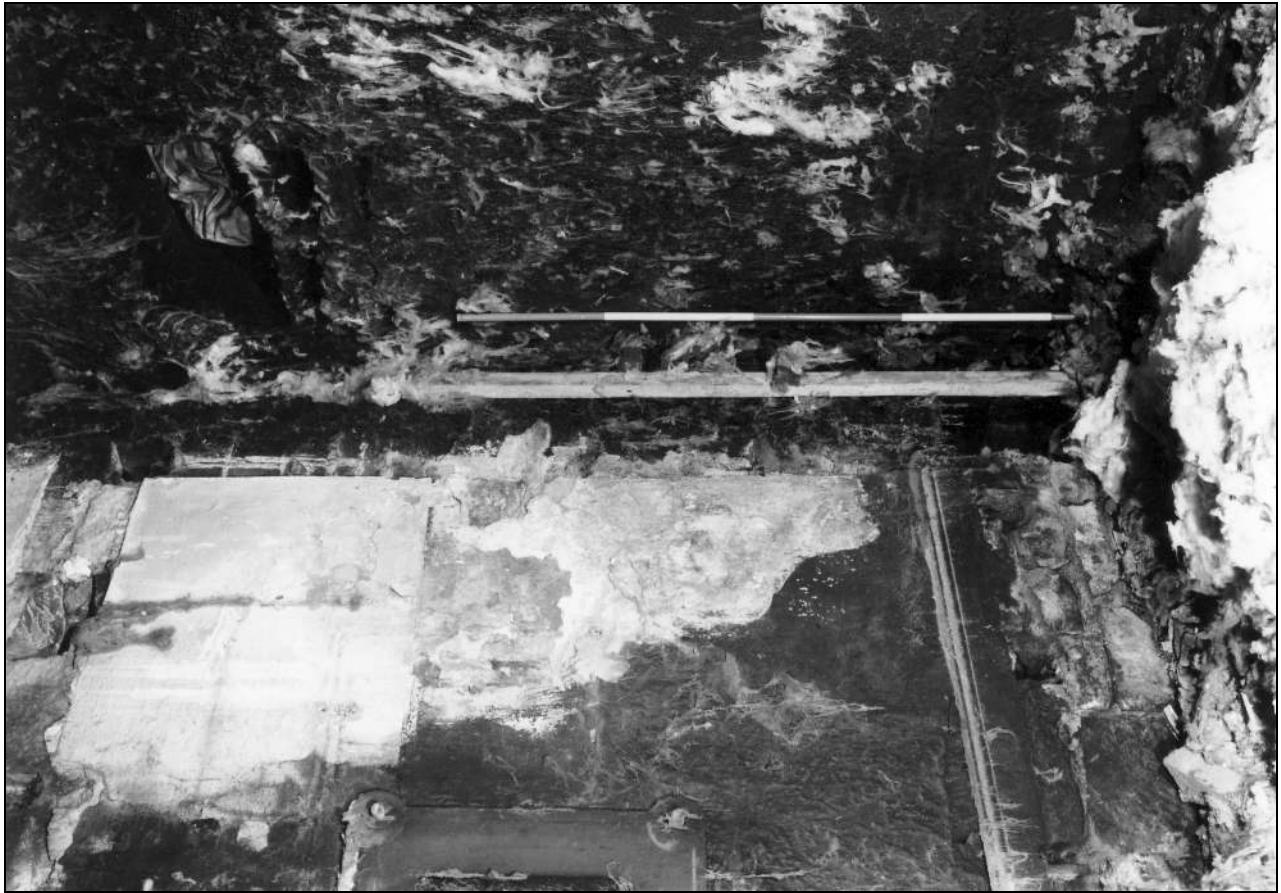


Photo 58: Interior of engine house: south-east corner, showing remains of decoration and skirting, and grease from flywheel (film



Photo 59: Interior of engine house: remains of skirting, east side (film 5, frame 15)



Photo 60: Interior of engine house: south-east corner, upper level, showing gallery and line of former partition enclosing flywheel (film



Photo 61: Interior of engine house: west side, showing position of former gallery (film 6, frame 6)





Photo 62: Interior of engine house: south-west corner, showing pipe in line with chimney (film 6, frame 4)



Photo 63: Interior of engine house: north-east corner, showing doorway and wall box for shaft to mill (film 5, frame 12)



Photo 64: Interior of engine house: detail of wall box for shaft to mill (film 5, frame 13)



Photo 65: Interior of engine house: upper part of east wall (film 6, frame 11)



Photo 66: Interior of engine house: foot of north window, showing remains of decoration to either side (film 6, frame 7)



Photo 67: Interior of engine house: north-west corner, showing blocked doorway to boiler house (film 6, frame 5)



Photo 68: Interior of engine house: top of north window (film 6, frame 10)



Photo 69: Interior of engine house: ground level opening, north-east corner (film 6, frame 9)



Photo 70: Interior of engine house: view of beams in ceiling, from the north-east corner (film 6, frame 12)



Photo 71: Top of engine house following removal of roof, from the east (film 10, frame 4)



Photo 72: Top of engine house following removal of roof, from the east (film 10, frame 5)



Photo 73: Foot of chimney with flue opening, from the north-west (film 5, frame 4)

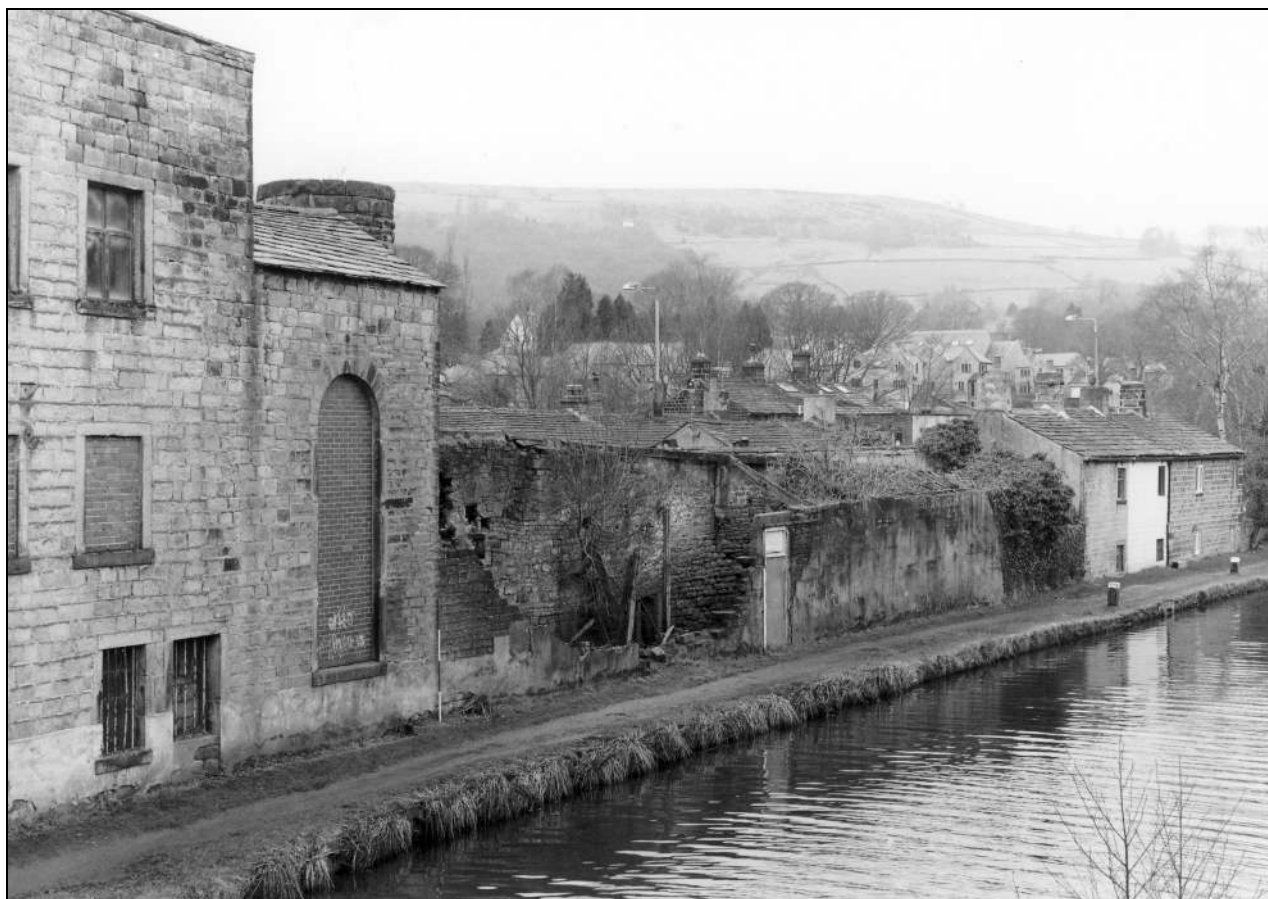


Photo 74: Engine house and remains of boiler house, from the north-east (film 8, frame 10)



Photo 75: North side of boiler house, from the east (film 5, frame 6)

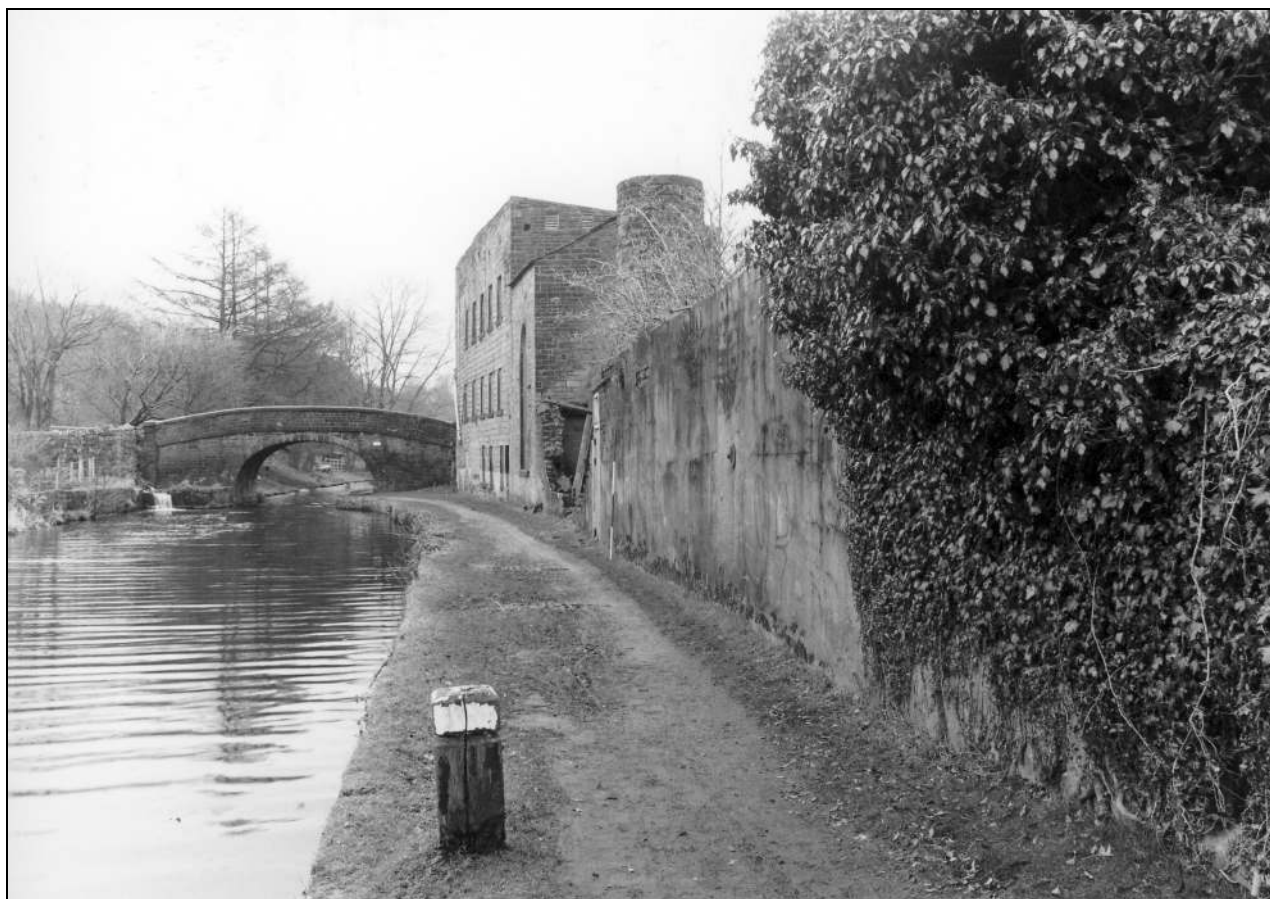


Photo 76: North side of boiler house, from the west (film 8, frame 14)



Photo 77: South side of boiler house/north side of weaving shed, from the south (film 1, frame 10)





Photo 79: Interior of boiler house, from the west (film 4, frame 13)



Photo 78: Internal view of doorway from boiler house to tow-path, from the south-west (film 4, frame 12)



Photo 81: North side of doorway from boiler house to weaving shed (film 4, frame 15)



Photo 80: North side of doorway from boiler house to weaving shed (film 5, frame 1)



Photo 83: Detail of wall box in south side of boiler house, from the south (film 1, frame 16)



Photo 82: Remains of hoisting timbers in east end of boiler house (film 5, frame 5)

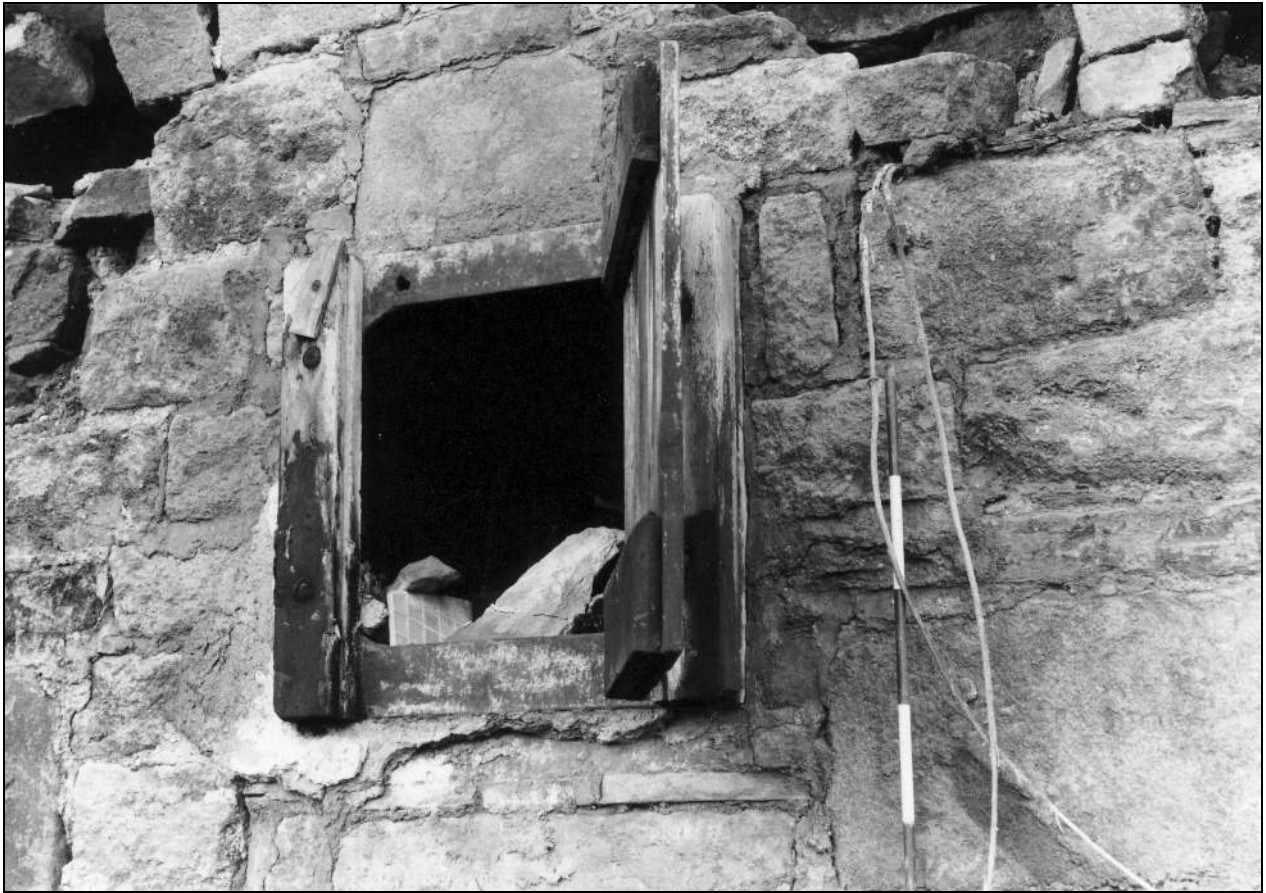


Photo 84: Detail of wall box in south side of boiler house, from the north (film 4, frame 18)



Photo 85: Detail of capped box in south side of boiler house, from the north (film 4, frame 17)