



Photo 86: Detail of cast iron door in south side of boiler house, from the south (film 1, frame 15)



Photo 87: Interior of boiler house, from the east (film 4, frame 10)



Photo 88: Detail of roof truss over boiler house, from the east (film 4, frame 11)



Photo 89: Detail of iron bracket to roof truss over boiler house, from the north-east (film 4, frame 16)



Photo 90: East elevation of weaving shed (south part) (film 2, frame 1)



Photo 91: East elevation of weaving shed (central part) (film 2, frame 3)



Photo 92: Detail of former doorway in east elevation of weaving shed (film 2, frame 5)

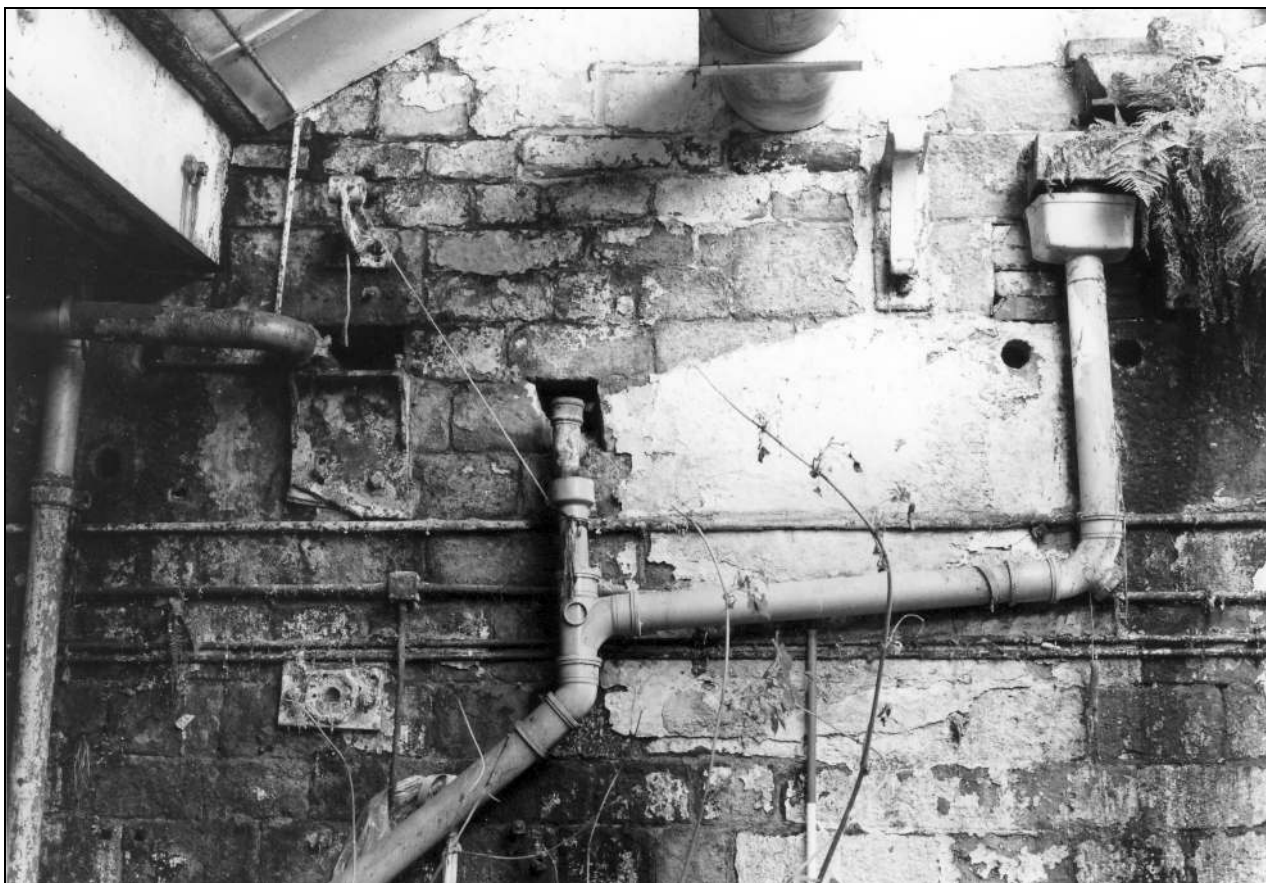


Photo 93: Detail of line shaft brackets etc in east elevation of weaving shed (film 2, frame 4)



Photo 94: South elevation of weaving shed, where visible to east of cottages (film 8, frame 2)

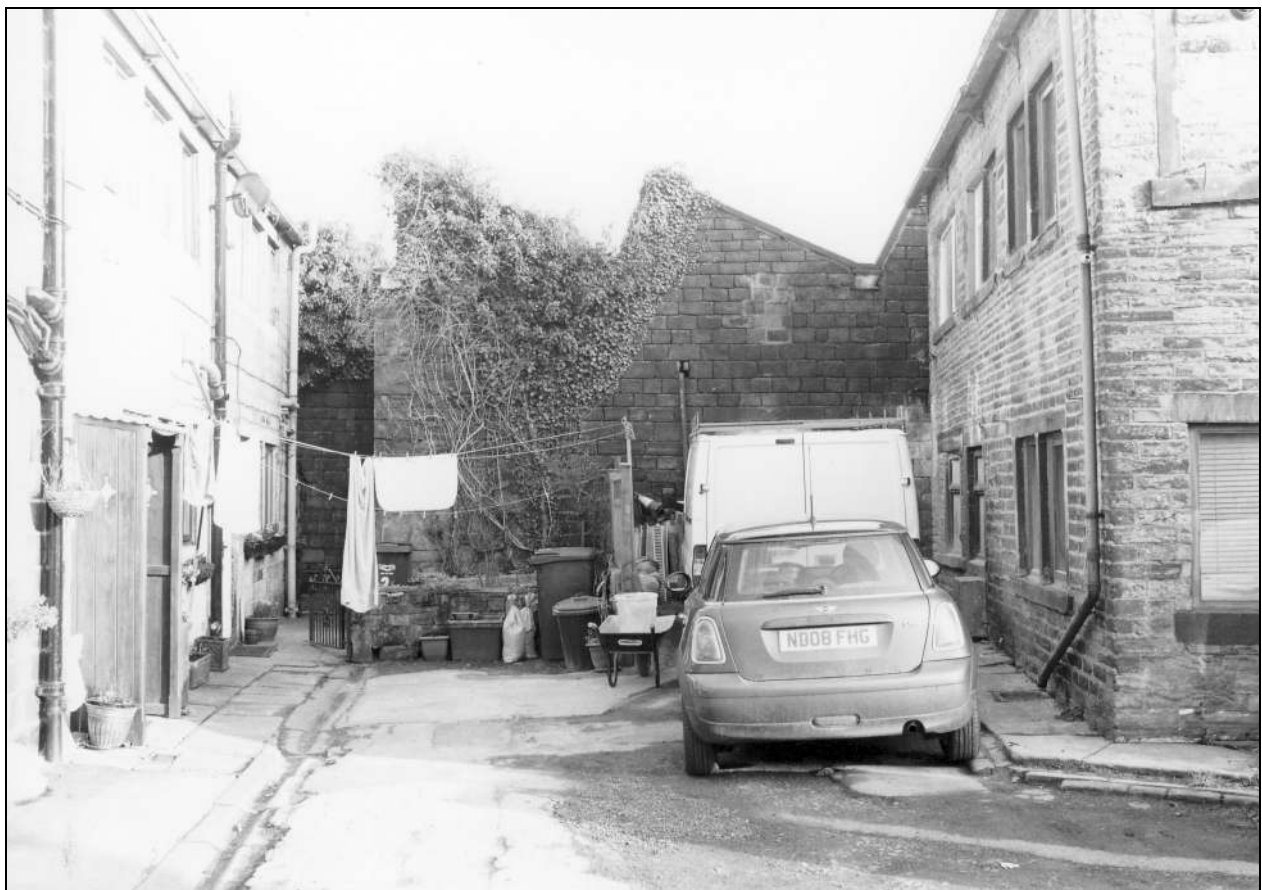


Photo 95: West elevation of weaving shed, where visible between cottages (film 5, frame 11)

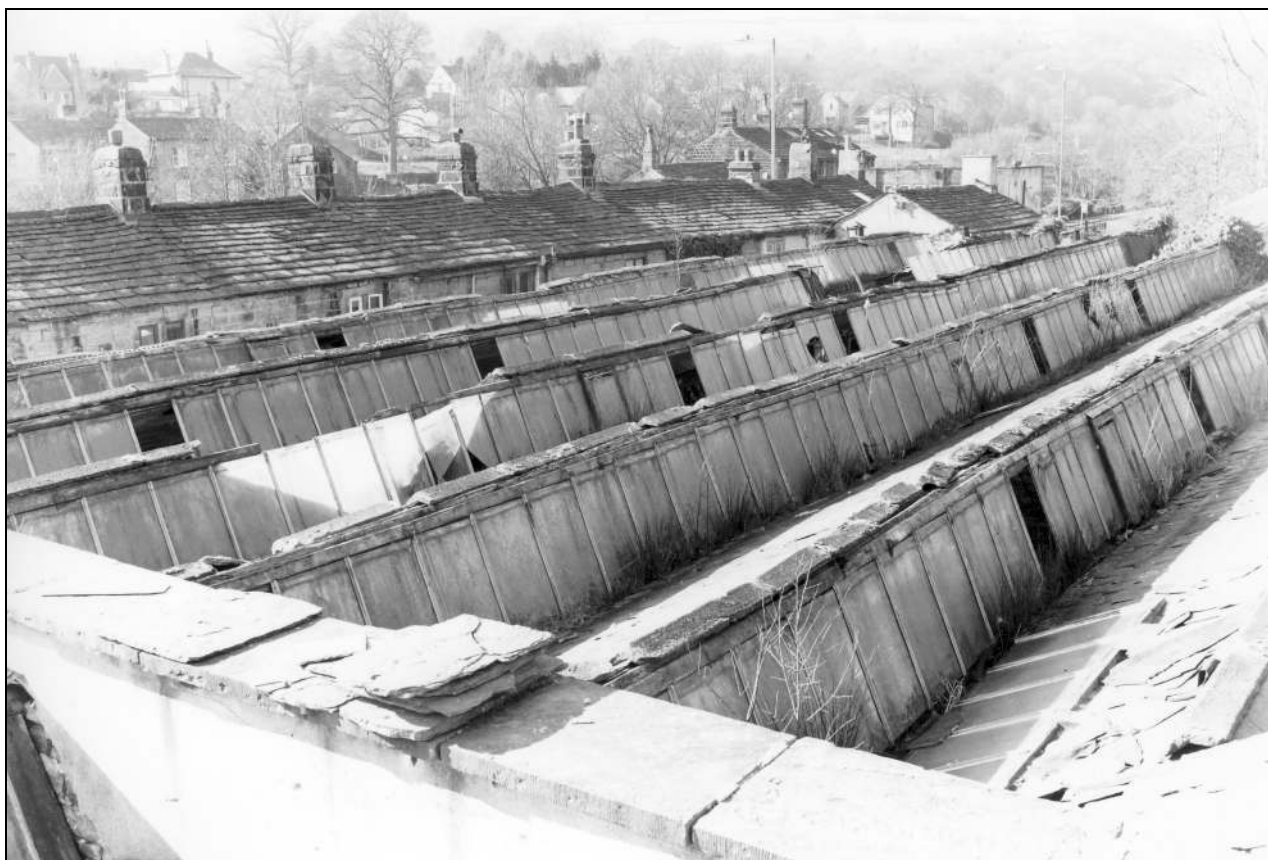


Photo 96: Roof of weaving shed, from the north-east (film 7, frame 12)



Photo 97: Underside of weaving shed roof, from the west (film 1, frame 6)

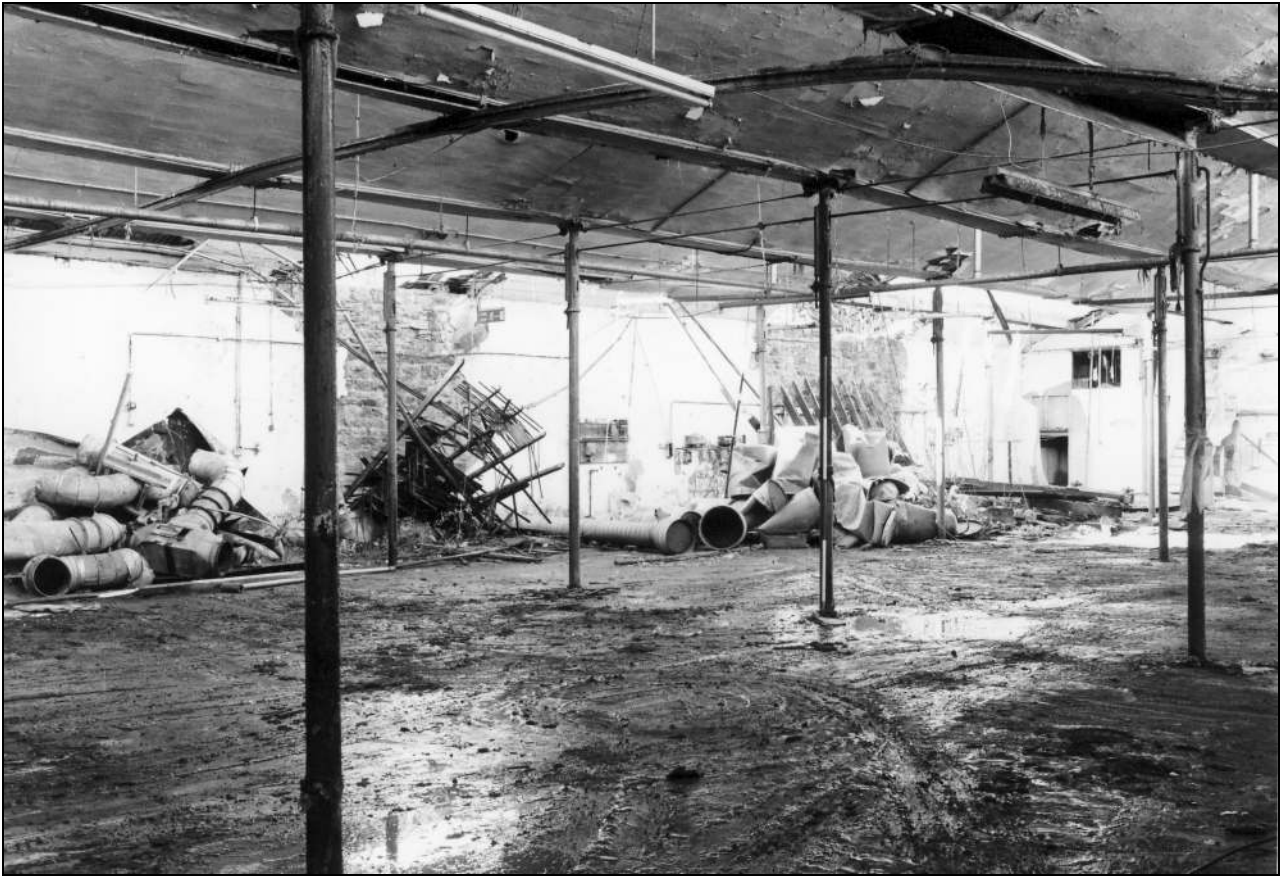


Photo 98: General view of weaving shed interior, from the north-east (film 1, frame 1)



Photo 99: Typical column in weaving shed interior, from the north-west (film 1, frame 5)

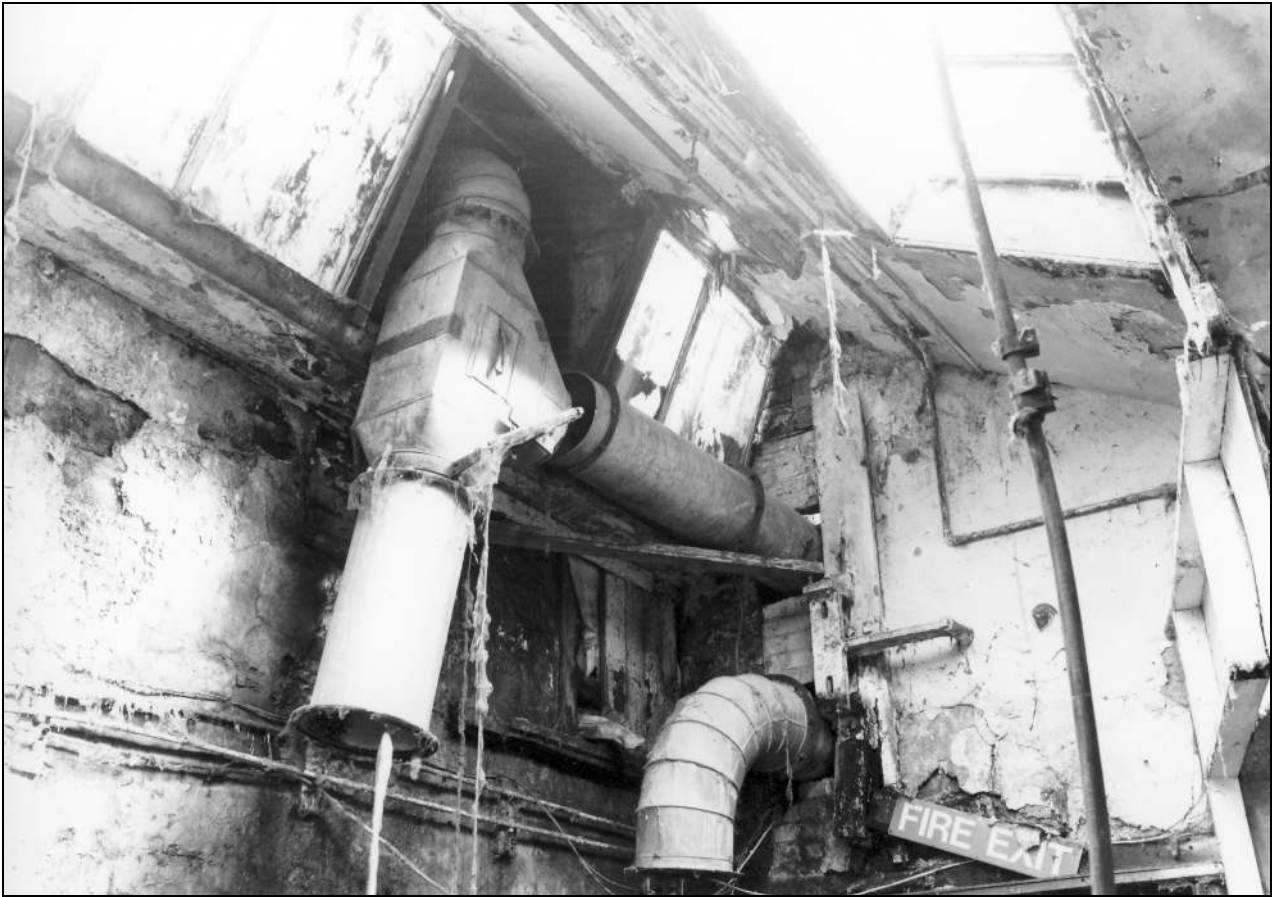


Photo 100: North-east corner of weaving shed, showing arrangement with engine house (film 7, frame 15)



Photo 101: Recess in east wall of weaving shed, for large bearing
(film 1, frame 13)



Photo 102: South side of engine house, from within weaving shed (film 1, frame 12)



Photo 103: Doorway in south side of weaving shed (film 1, frame 4)



Photo 104: General view of weaving shed interior, from the east (film 1, frame 3)



Photo 105: General view of the site from the south-east, across Burnley Road (film 9, frame 6)



Photo 106: The east side of the buildings alongside Bings Road (film 9, frame 4)

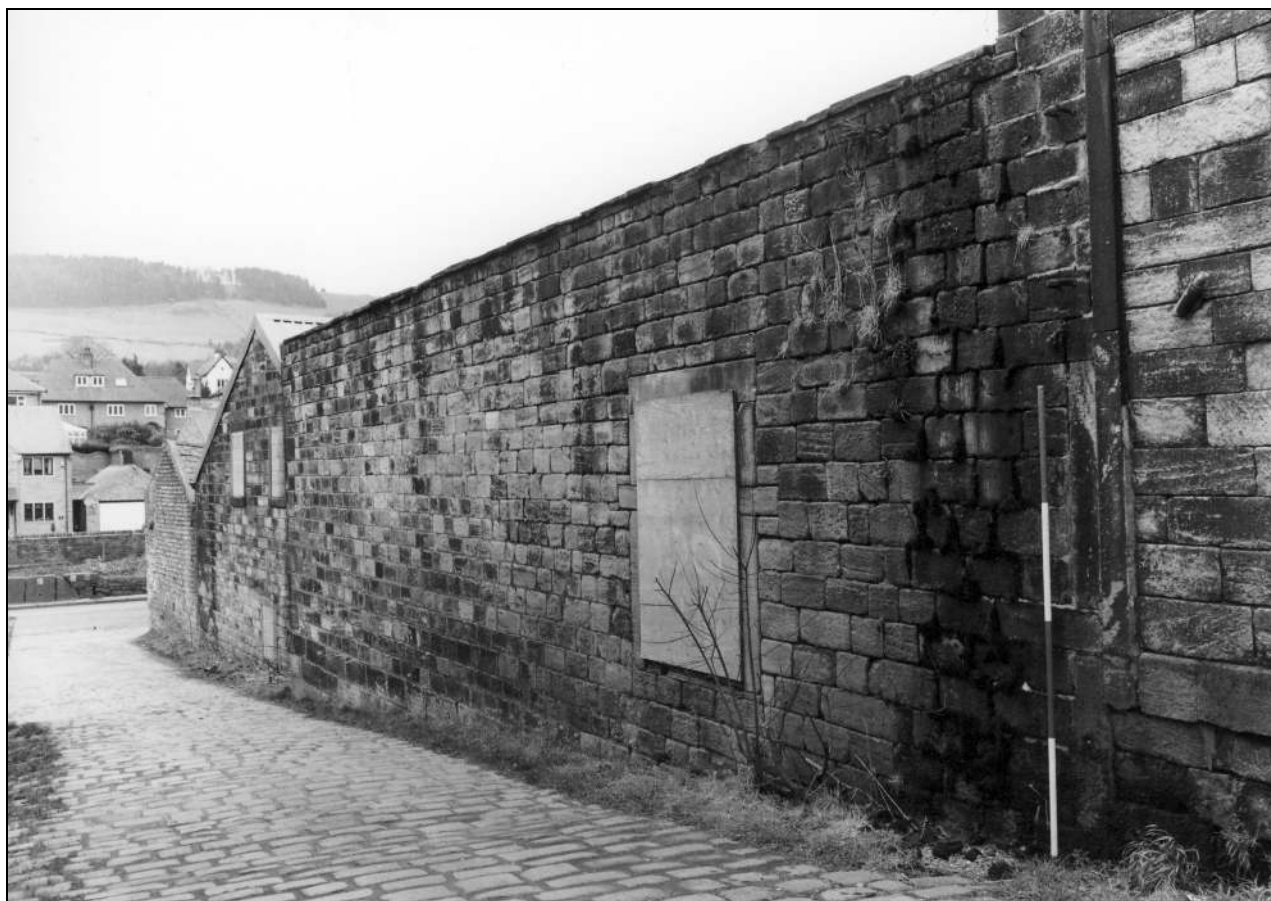


Photo 107: The east side of the covered yard, from the north-east (film 9, frame 1)



Photo 108: Roof of the covered yard, from the north-east (film 7, frame 13)



Photo 109: The covered yard: interior view, from the west (film 3, frame 10)



Photo 110: The covered yard: interior view, from the south-east (film 1, frame 18)



Photo 111: Typical column in covered yard, from the east (film 7, frame 9)



Photo 112: Underside of roof in covered yard, from the east (film 2, frame 6)

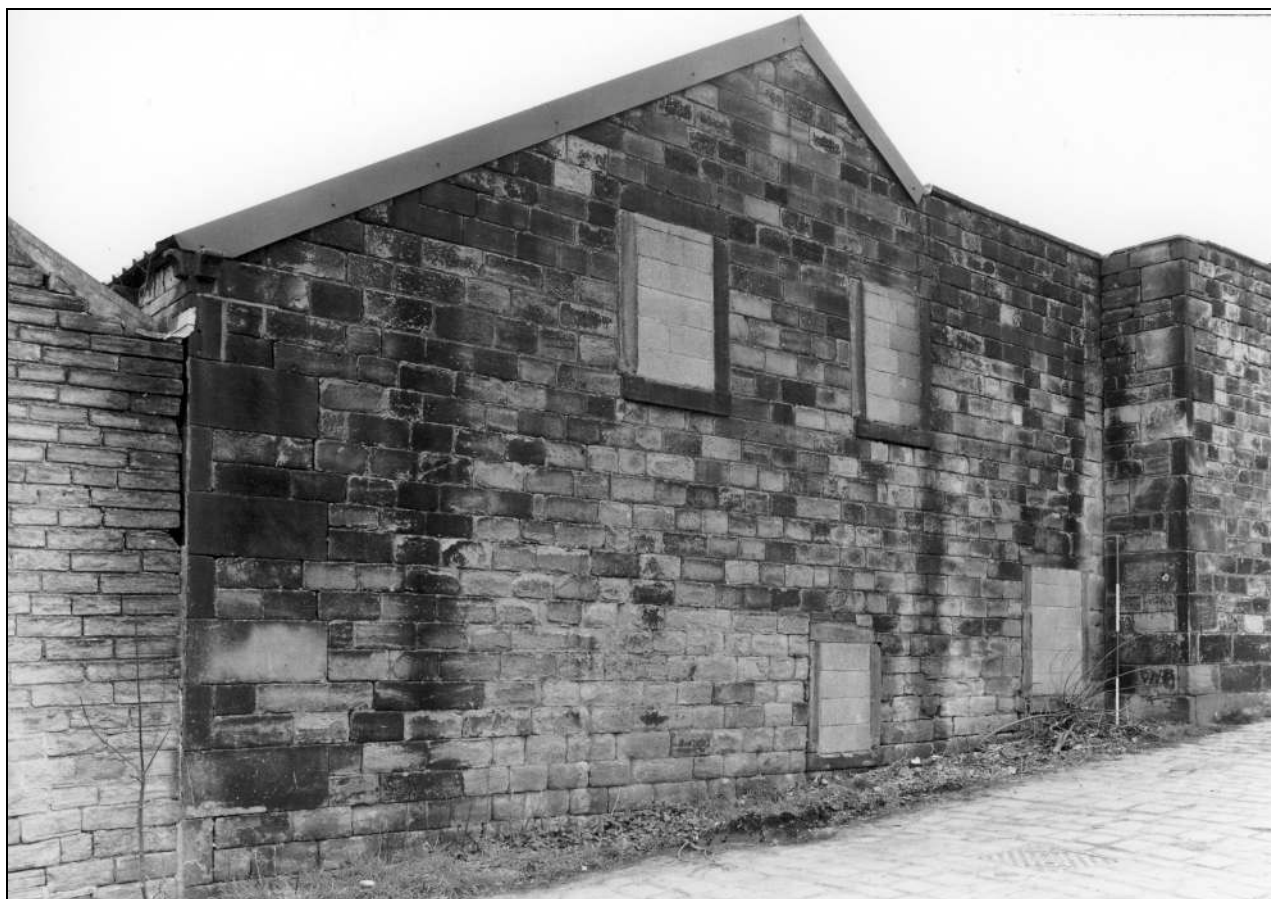


Photo 113: East side of warehouse, from the south-east (film 9, frame 5)



Photo 114: South side of warehouse, within later building, from the south (film 2, frame 18)

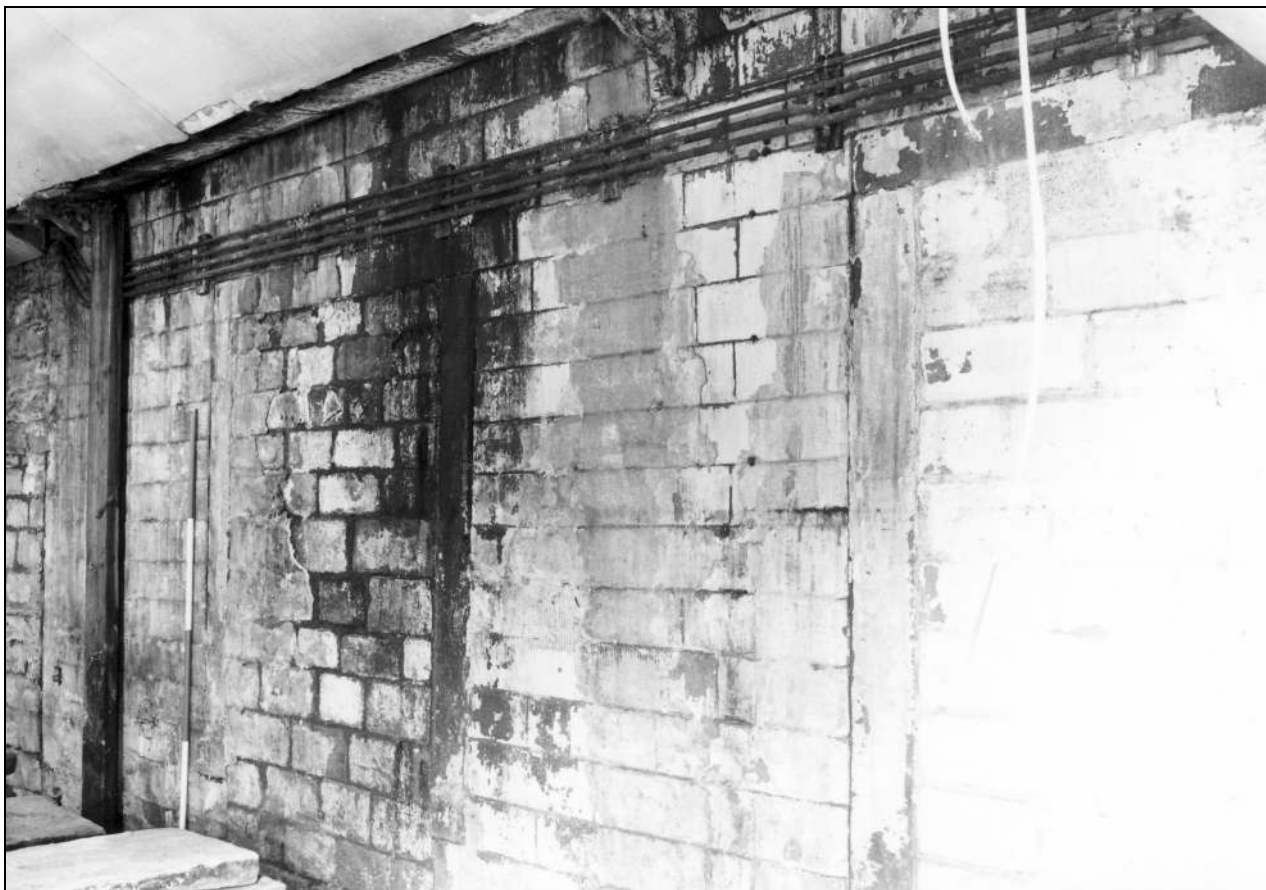


Photo 115: South side of warehouse, within later building, from the south (film 3, frame 1)



Photo 116: Present south entrance into warehouse, from the south (film 3, frame 5)



Photo 117: Blocked doorway in south-east corner of warehouse, from the north-west (film 2, frame 11)



Photo 118: Interior of warehouse, from the north-west (film 2, frame 12)



Photo 119: Interior of warehouse, from the south-west (film 2, frame 13)



Photo 120: Interior of warehouse (upper floor level), from the south-west (film 2, frame 15)



Photo 121: Interior of warehouse, from the north (film 2, frame 17)



Photo 122: Roof truss in warehouse, from the north-east (film 2, frame 16)



Photo 123: Store fronting Burnley Road, from the south-west (film 7, frame 18)



Photo 124: Store fronting Burnley Road, from the south-east (film 8, frame 3)



Photo 125: Store fronting Burnley Road, from the south (film 7, frame 16)

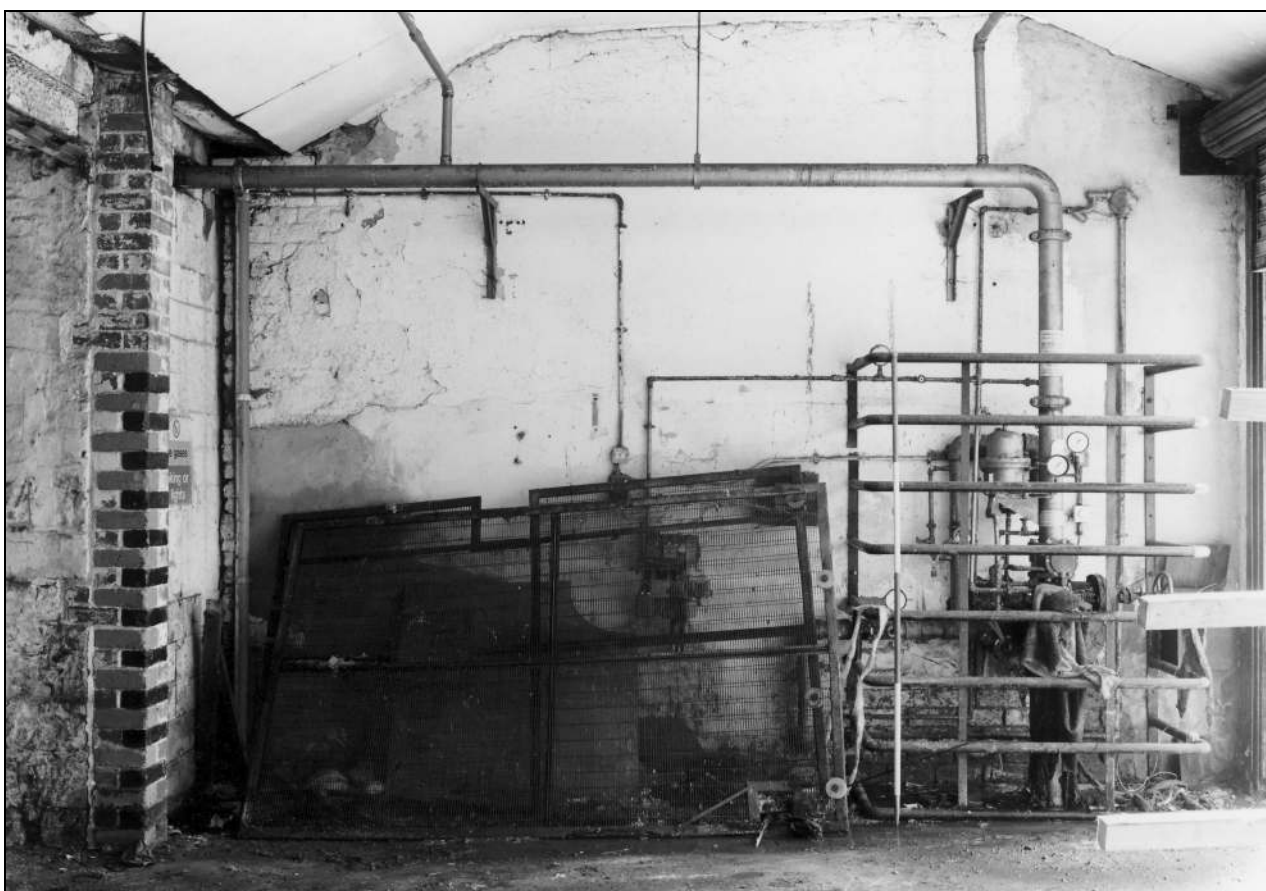


Photo 126: Interior of store, from the west (film 3, frame 4)



Photo 127: Interior of store, from the east (film 3, frame 3)



Photo 128: Detail of cast iron valley gutter between store and warehouse (film 3, frame 6)