



Photo 1: General view of the site from the south-west, while scaffolded (film 5, frame 15)



Photo 2: Front elevation of house from the south, while scaffolded (film 5, frame 5)



Photo 3: Front elevation of house from the south, while scaffolded (film 5, frame 4)



Photo 4: Front elevation of house from the south (after some work) (film 8, frame 1)



Photo 5: Front elevation of house with barn beyond, from the south-west (after some work) (film 8, frame 3)



Photo 6: Detail of blocked ground and first floor doorways, front elevation of house, while scaffolded (film 5, frame 6)



Photo 7: Housebody window and doorway, front elevation, while scaffolded (film 5, frame 7)



Photo 8: West gable of house, while scaffolded (film 5, frame 9)



Photo 9: West gable of house (after some work) (film 8, frame 4)



Photo 10: Detail of kneeler at north-west corner of house, while scaffolded (film 5, frame 13)



Photo 11: Blocked windows in lower part of west gable to house (film 7, frame 4)



Photo 12: Blocked window in upper part of west gable to house (film 7, frame 5)



Photo 13: General view of the range from the north-west, while scaffolded (film 5, frame 10)



Photo 14: General view of the range, from the north-west (after some work) (film 8, frame 5)



Photo 15: General view of the house from the north, while scaffolded (film 5, frame 12)



Photo 16: East side of sunken pantry, while scaffolded (film 3, frame 16)



Photo 17: External detail of pantry window, rear of house while scaffolded (film 5, frame 11)

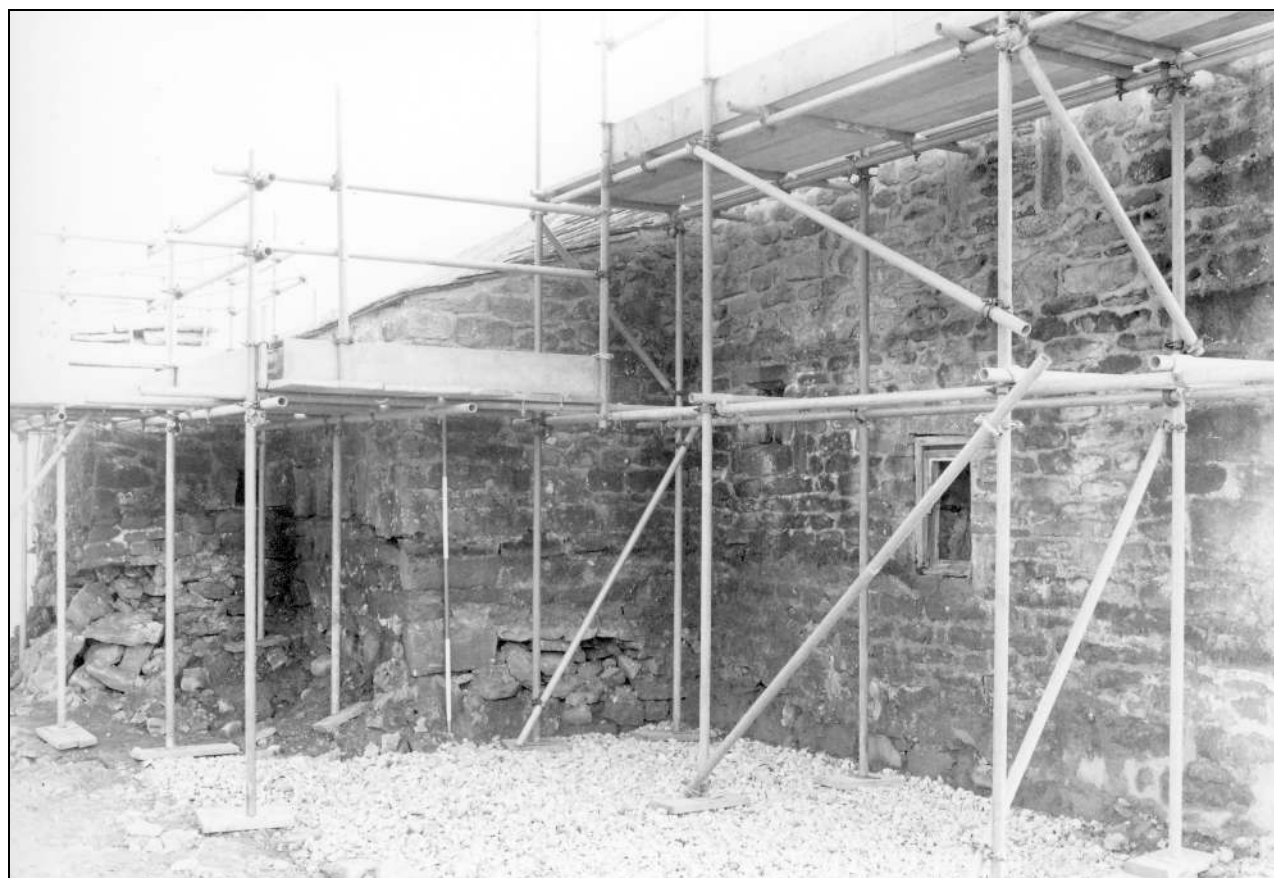


Photo 18: Rear of house from the north-west, while scaffolded (film 3, frame 13)



Photo 19: Rear of house and rebuilt pantry, from the north (after some work) (film 8, frame 6)



Photo 20: General view of the barn, while scaffolded (film 5, frame 16)



Photo 21: Front of the barn, from the south-west (after some work) (film 8, frame 12)



Photo 22: Front of the barn, from the south-east (after some work) (film 8, frame 13)



Photo 23: East end of the barn and later loose boxes, from the south-east, while scaffolded (film 5, frame 17)



Photo 24: East gable of barn, and later loose boxes, from the south-east (film 8, frame 16)



Photo 25: Rear of the barn from the north-west, while scaffolded (film 6, frame 3)



Photo 26: Rear of the barn from the north, while scaffolded (film 6, frame 1)



Photo 27: Blocked doorway in north wall of barn (film 7, frame 2)



Photo 28: Rear of barn, from the north (after some work) (film 8, frame 7)



Photo 30: Detail of forking hole with rebate for shutter, east gable of barn (film 5, frame 1)

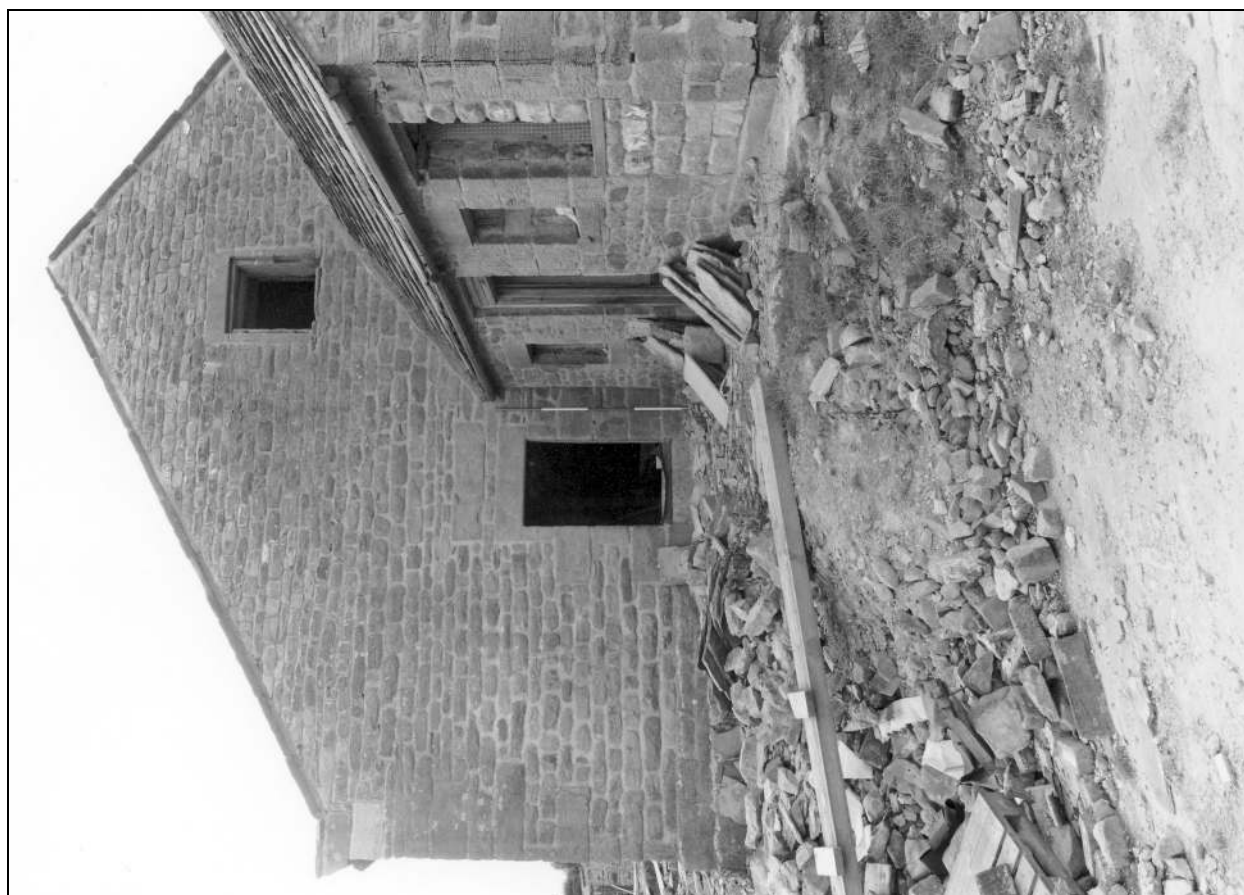


Photo 29: East gable of barn, and later loose boxes, from the east (film 8, frame 17)



Photo 31: Straight joint in north wall of barn (film 7, frame 1)

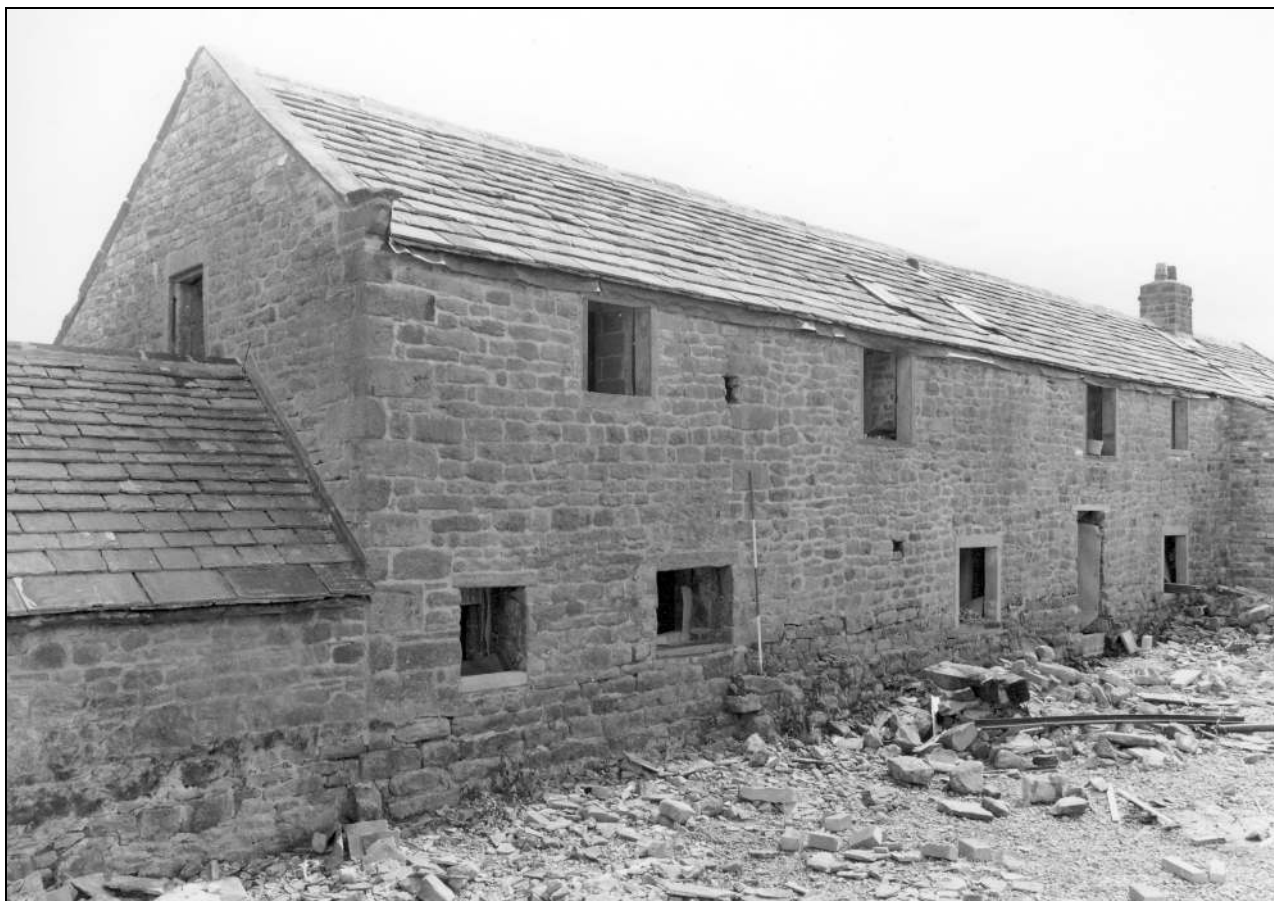


Photo 32: Rear of barn, from the north-west (after some work) (film 8, frame 9)



Photo 33: East end of the barn and later loose boxes, from the north-east, while scaffolded (film 5, frame 18)



Photo 34: Rear of later loose boxes and barn, from the north (after some work) (film 8, frame 10)



Photo 35: Detached privy and Cross Bank Cottage beyond, from the north-east (film 6, frame 13)



Photo 36: Housebody: blocked doorway with shelves, and doorway to former parlour, from the north-east (film 1, frame 10)



Photo 37: Housebody, from the north (film 1, frame 9)



Photo 38: Foot of stairs, taken from the east within housebody (film 1, frame 5)



Photo 39: Housebody fireplace with later range (film 1, frame 12)



Photo 40: Housebody, from the south-east (film 1, frame 4)



Photo 41: Detail of chamfer to fireplace jamb in housebody (film 4, frame 13)



Photo 42: Detail of housebody fireplace and range (film 1, frame 13)

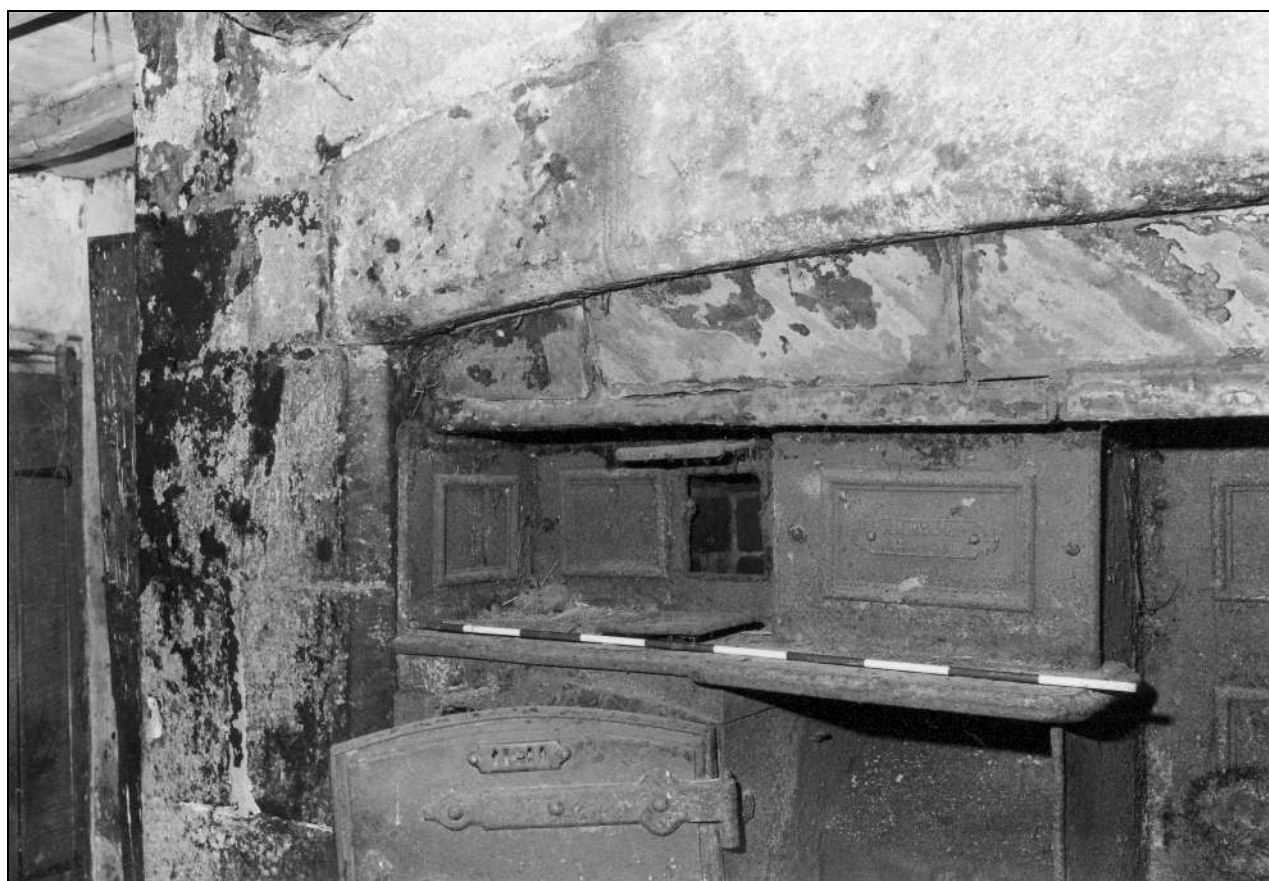


Photo 43: Detail of housebody fireplace with later arch (film 1, frame 15)



Photo 44: Fireplace in housebody, following removal of range (film 7, frame 18)



Photo 45: Fireplace in housebody, following removal of range (film 7, frame 12)



Photo 46: Fireplace in housebody, following removal of range (film 7, frame 16)



Photo 47: Fireplace in housebody, following removal of range (film 7, frame 11)



Photo 48: Fireplace in housebody, following removal of range:
detail of recess in north side (film 7, frame 13)



Photo 49: Fireplace in housebody, following removal of range:
detail of recess in south side (film 7, frame 15)



Photo 50: Detail of name plate "F MANBY & CO, SKIPTON" on range in housebody (film 4, frame 12)



Photo 51: Housebody: flagged floor, from the south-east (film 1, frame 11)



Photo 52: Housebody, from the south (film 1, frame 6)



Photo 53: Housebody, from the south-west (film 1, frame 7)

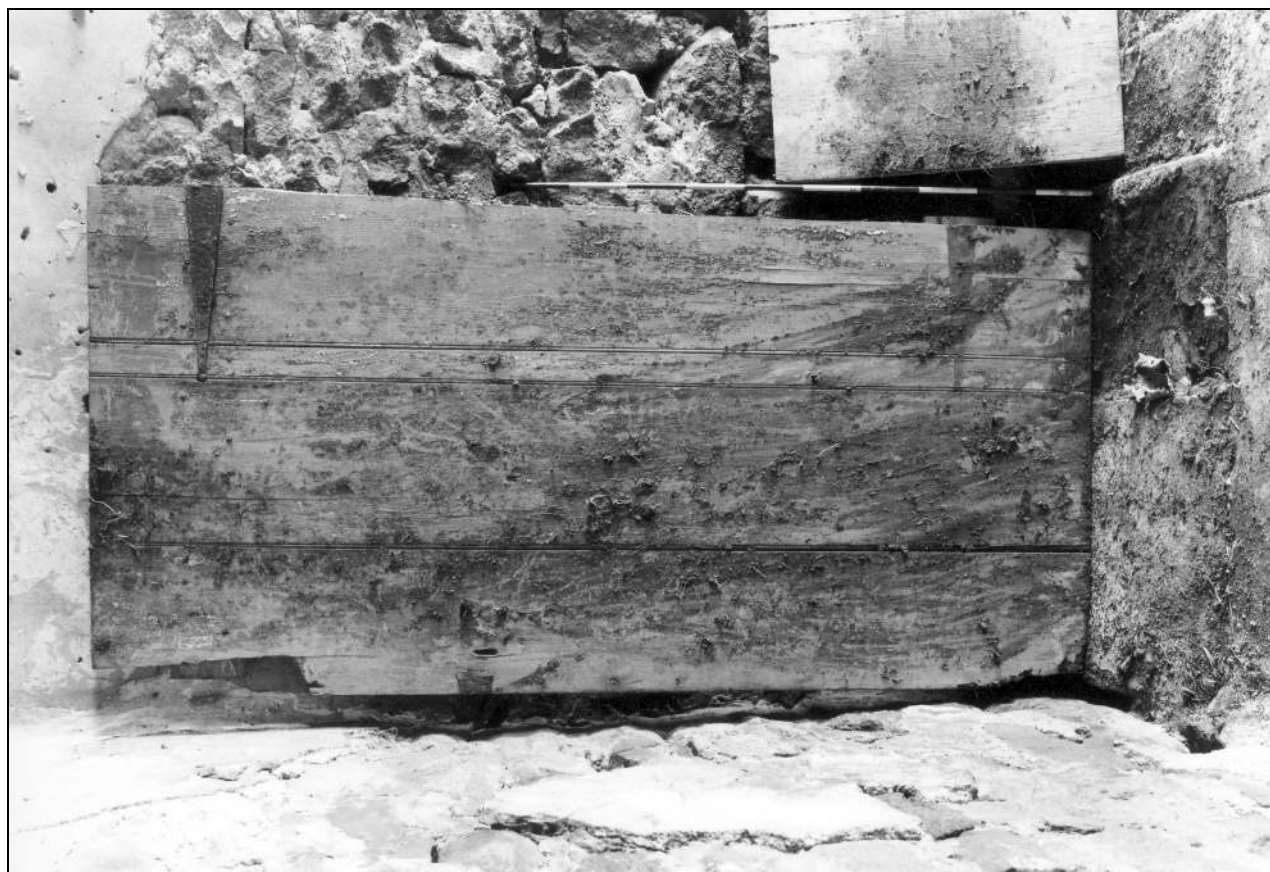


Photo 54: Detail of detached door in housebody (film 1, frame 17)



Photo 55: Detail of chamfer and stop to beam over housebody (film 1, frame 16)



Photo 56: Rear face of door between housebody and former parlour (film 2, frame 1)



Photo 57: Detail of later set-pot in former parlour, from the south-west (film 2, frame 3)



Photo 58: Detail of set pot in former parlour (film 3, frame 17)

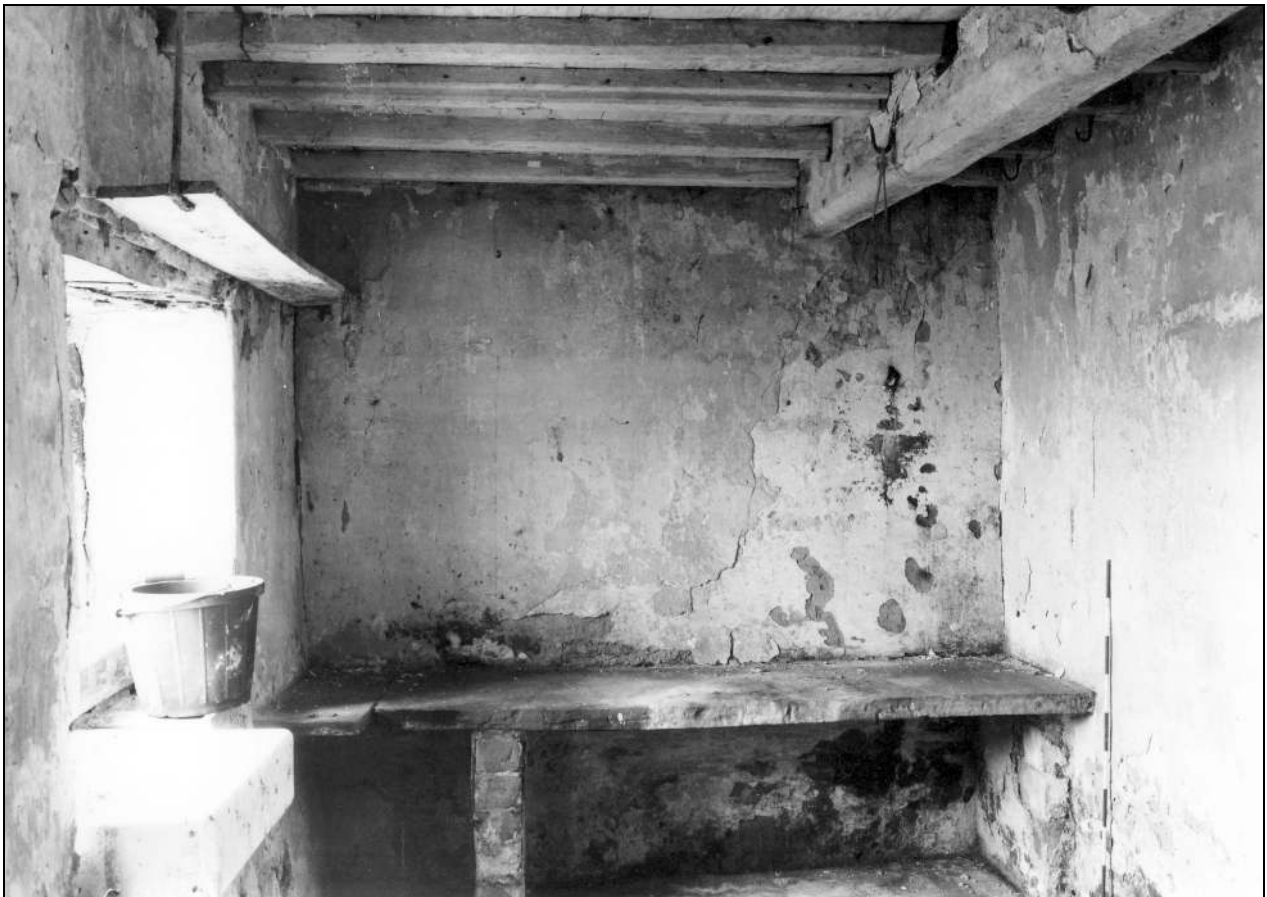


Photo 59: Wash-house or scullery within former parlour, from the east (film 1, frame 18)

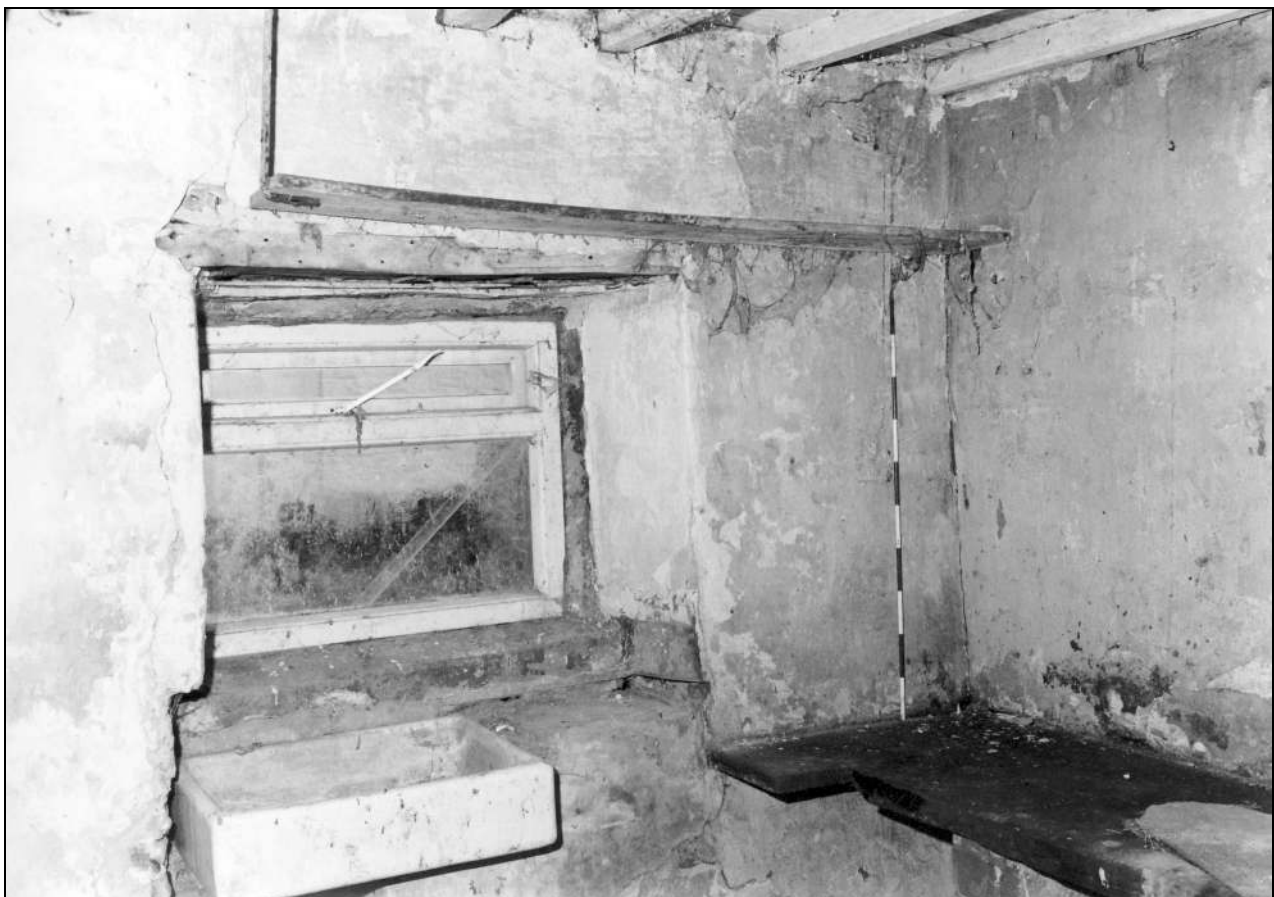


Photo 60: Wash-house or scullery within former parlour, from the north-east (film 4, frame 15)