



Photo 61: Pantry in rear of former parlour, from the north-west (film 2, frame 6)



Photo 62: Former parlour, from the south-west (film 7, frame 17)



Photo 63: Pantry in rear of former parlour, from the south-west (film 2, frame 5)



Photo 64: Pantry in rear of former parlour, from the south-east (film 2, frame 4)



Photo 65: Beam and later floor over former parlour, from the north-west (film 2, frame 7)



Photo 66: Interior of original pantry, from the east (film 3, frame 4)





Photo 67: Window in original pantry, from the east (film 3, frame 6)

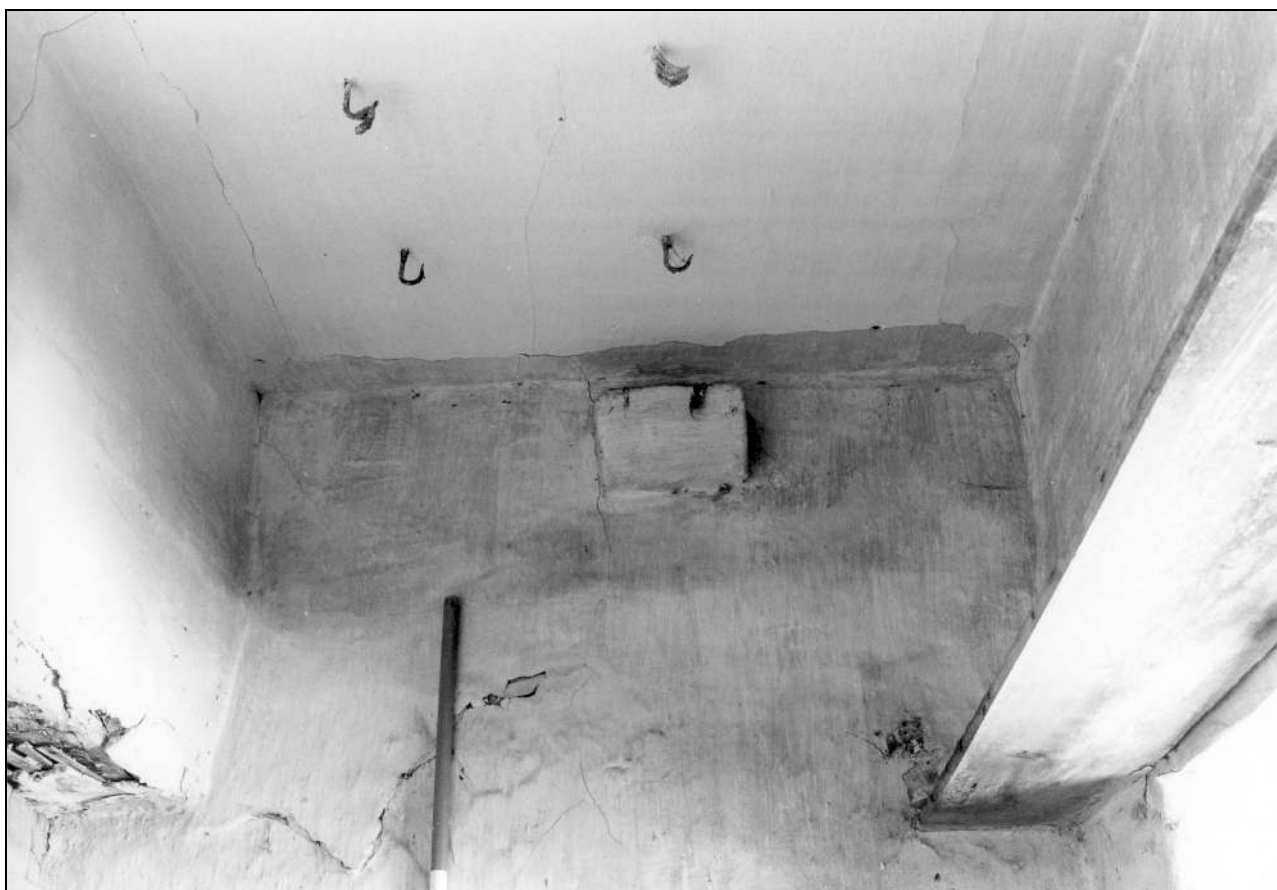


Photo 68: Ceiling hooks in original pantry, from the east (film 3, frame 5)



Photo 69: Floor in sunken pantry, showing likely position of well (film 4, frame 16)



Photo 70: Interior of sunken pantry, from the north-east (film 3, frame 12)



Photo 71: Interior of sunken pantry, from the north-west (film 3, frame 11)



Photo 72: Interior of sunken pantry, from the south-west (film 3, frame 10)



Photo 74: View down staircase, from the south (film 2, frame 9)



Photo 73: Interior of sunken pantry, from the south-east (film 3, frame 9)





Photo 76: West chamber/bedroom, from the north (film 2, frame 10)



Photo 75: West chamber/bedroom, from the south (film 2, frame 11)





Photo 78: Rear of door to east chamber (film 2, frame 14)



Photo 77: Front of door to east chamber (film 3, frame 2)

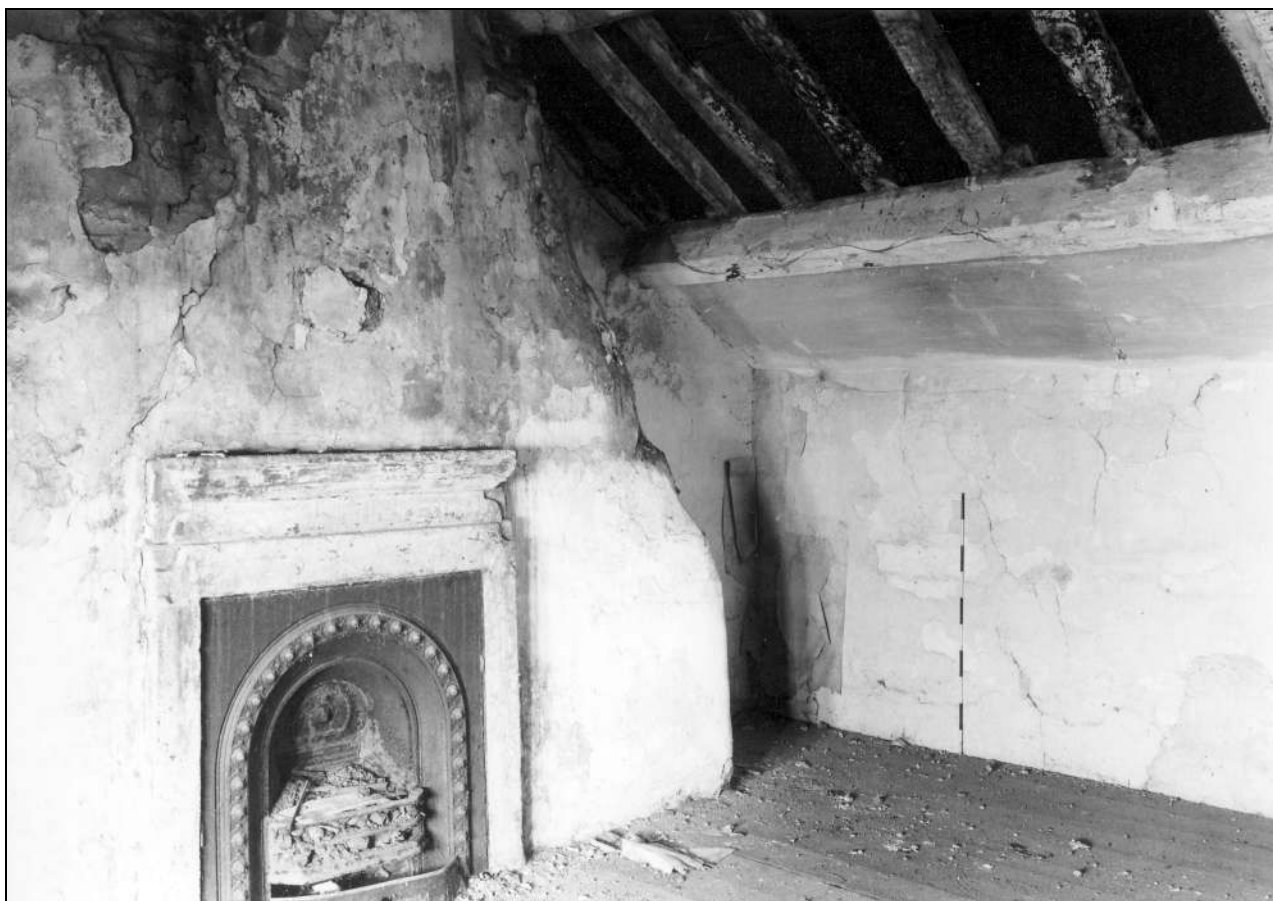


Photo 79: East chamber/bedroom, from the south-east (film 2, frame 12)



Photo 80: Detail of fireplace in east chamber (film 2, frame 18)

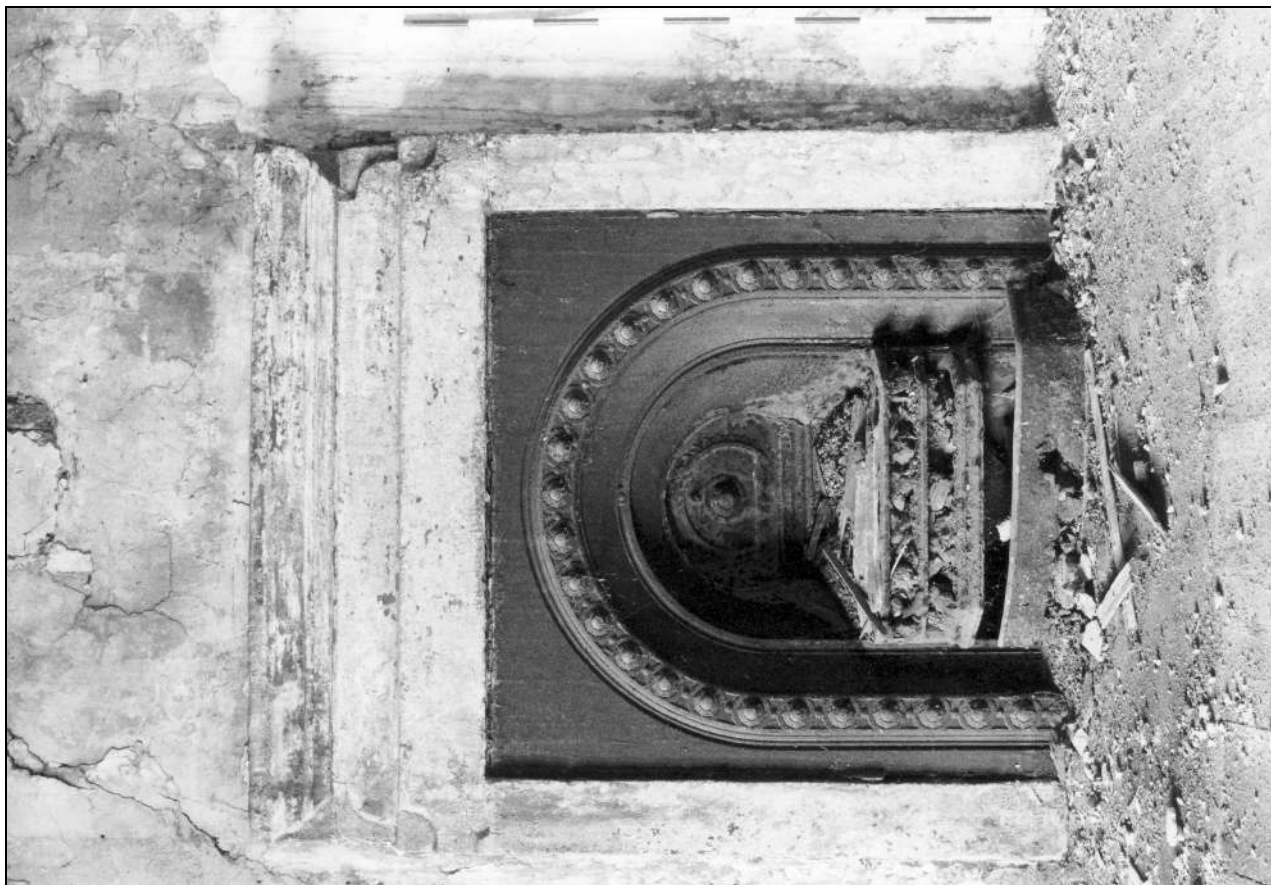


Photo 82: Detail of fireplace in east chamber (film 2, frame 16)



Photo 81: Detail of fireplace in east chamber (film 2, frame 17)





Photo 83: East chamber/bedroom, from the north-west (film 2, frame 13)



Photo 84: Timber re-used as purlin over east chamber, from the east (film 3, frame 1)



Photo 85: Detail of ridge over east chamber (film 3, frame 7)



Photo 86: View into barn entry, from the south, while scaffolded (film 6, frame 4)



Photo 87: Graffiti on east jamb of barn entry, from the west (film 6, frame 7)



Photo 88: Lintel for barn doors within entry, from the south, while scaffolded (film 6, frame 5)





Photo 90: Interior of barn, from the north-east (film 3, frame 18)



Photo 89: Interior view of main entrance into barn, from the north-west (film 4, frame 3)



Photo 91: Interior of barn, from the west (film 6, frame 10)



Photo 92: Interior of barn, from the south-east (film 6, frame 12)

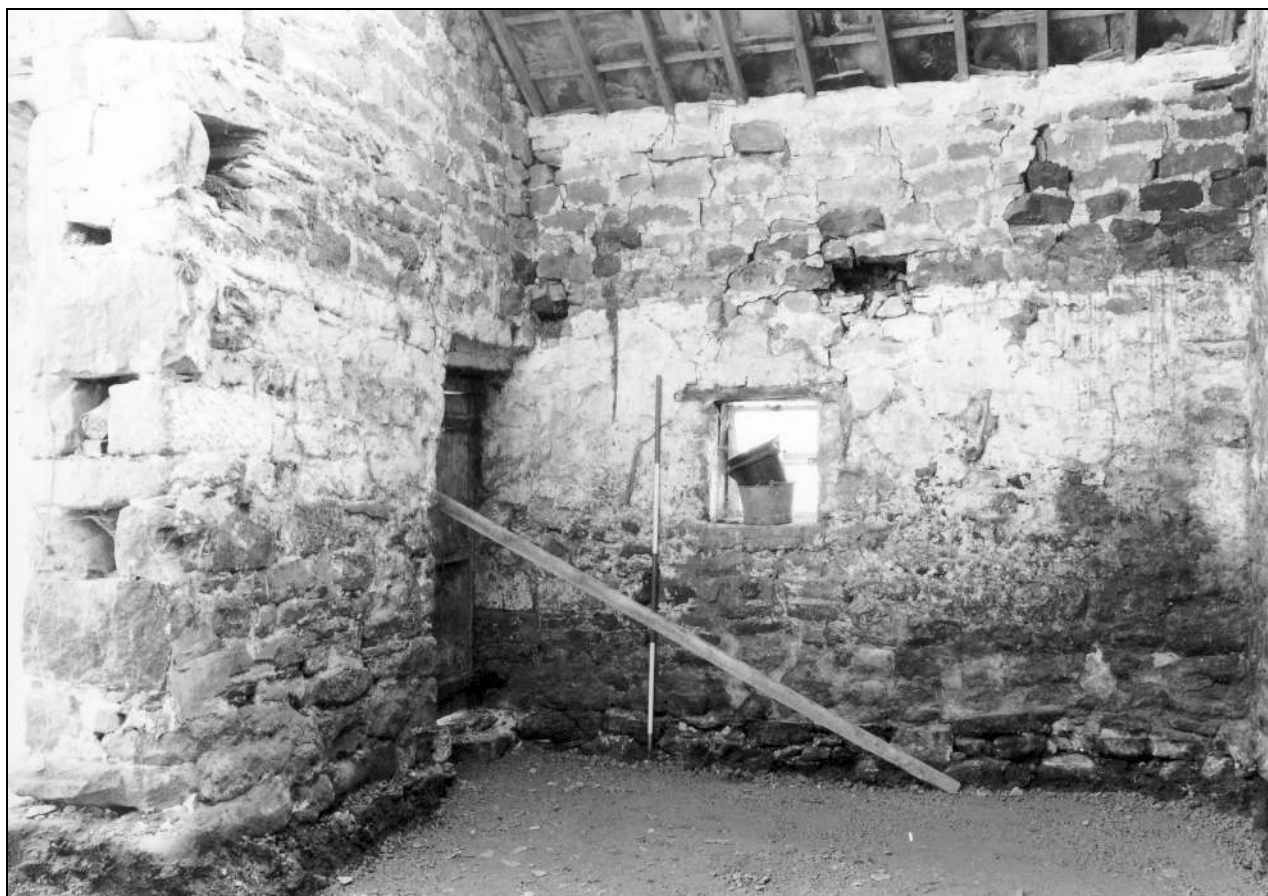


Photo 93: Interior of outshut, south-west corner of barn (film 4, frame 1)



Photo 94: Barn entry and south-east corner, from the north-west (film 6, frame 6)





Photo 95: Interior of barn (south-east outshut), from the north-east (film 6, frame 11)



Photo 96: Remains of arcade post and tie, removed from barn (film 6, frame 18)



Photo 97: Remains of arcade post and tie, removed from barn (film 6, frame 17)

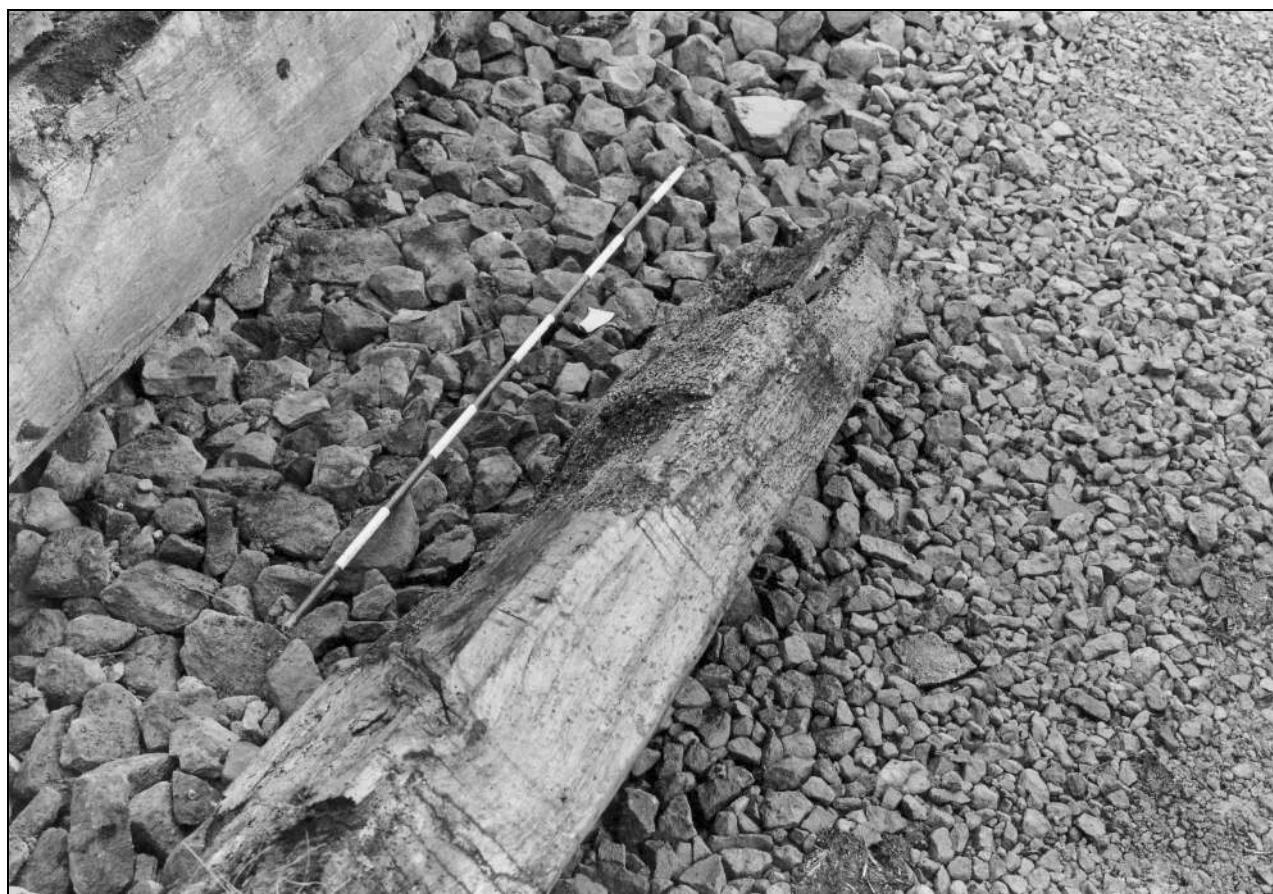


Photo 98: Detail of foot of arcade post, removed from barn (film 7, frame 10)



Photo 99: Detail of foot of arcade post, removed from barn (film 7, frame 7)

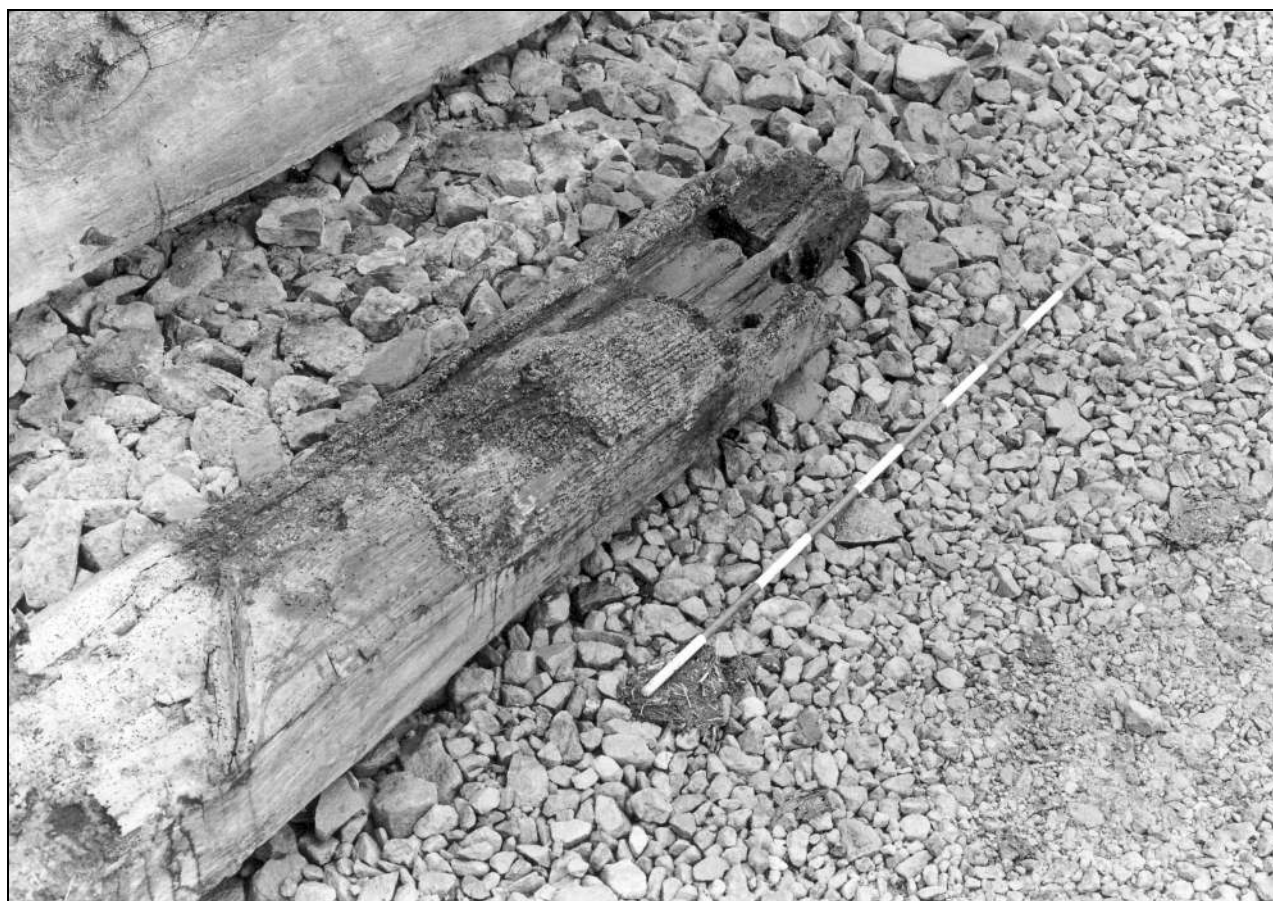


Photo 100: Detail of foot of arcade post, removed from barn (film 7, frame 6)





Photo 101: Detail of joint of arcade post and brace, removed from barn (film 7, frame 9)



Photo 102: Roof truss removed from barn (film 6, frame 15)



Photo 103: Detail of roof truss removed from barn (film 6, frame 16)

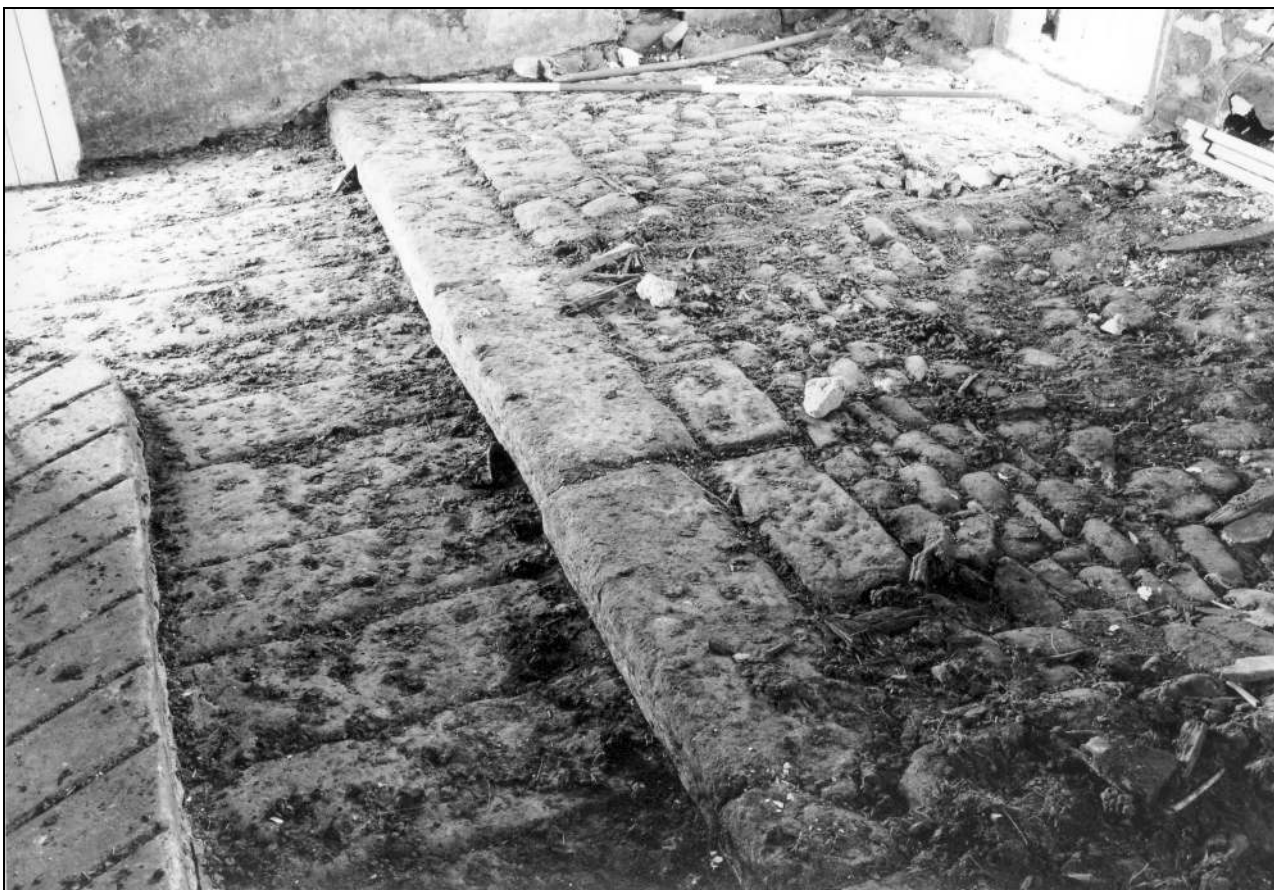


Photo 104: Detail of floor in stable, from the north-east (film 4, frame 7)



Photo 105: Interior of stable, from the north (film 4, frame 6)



Photo 106: Interior of stable, from the south-west (film 4, frame 5)



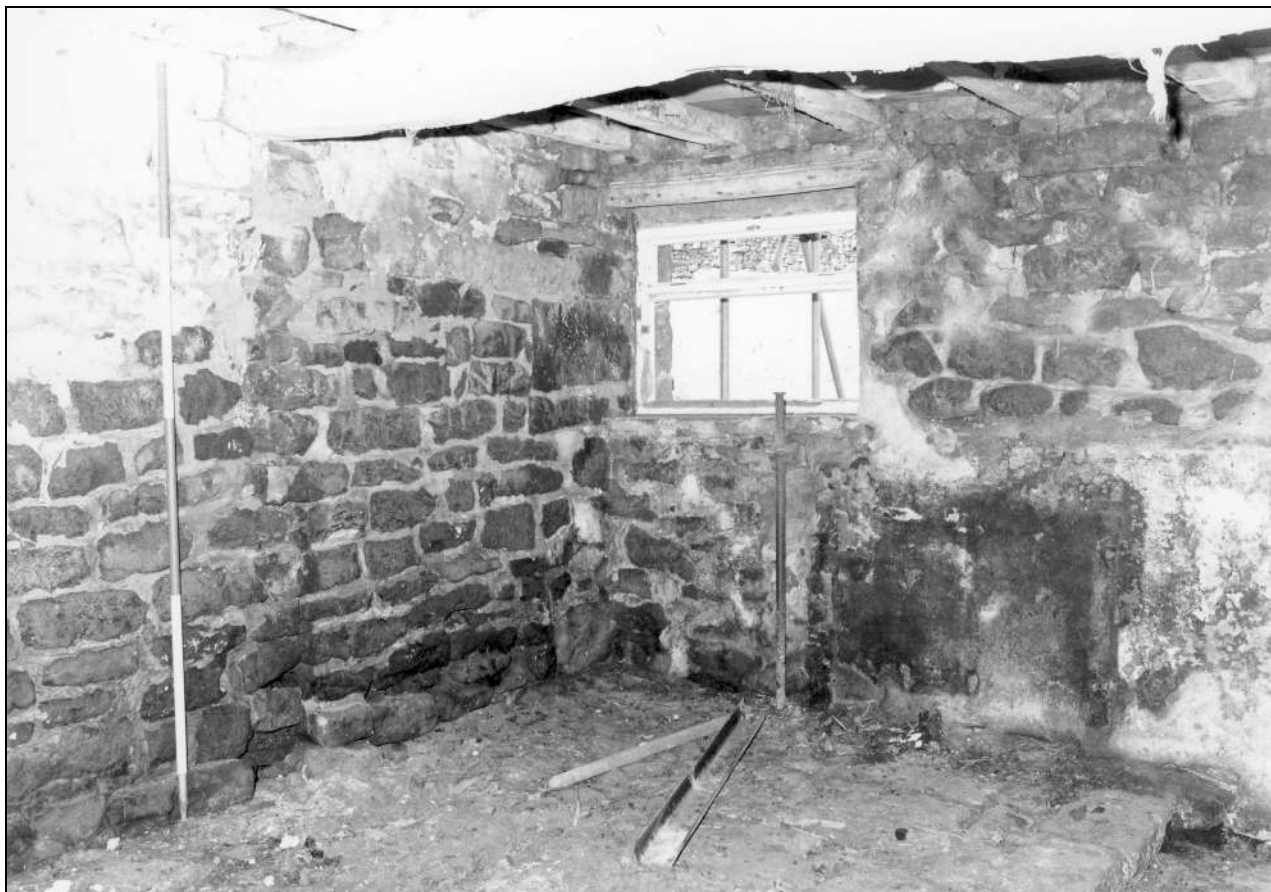


Photo 107: Interior of stable, from the south-east (film 4, frame 4)



Photo 108: Detail of flagged floor over stable, from the south-east (film 4, frame 9)



Photo 109: View down into loft over stable, from the north (film 5, frame 2)



Photo 110: Interior of outshut, south-east corner of barn (film 4, frame 17)



Photo 111: View down into loft over south-east outshut to barn (film 4, frame 18)



Photo 112: Interior of west loose box, from the south-west (film 4, frame 10)





Photo 113: Interior of east loose box, from the south-east (film 4, frame 11)