

Photo 1: General view of the barn, from the north-west (film 2, frame 4)



Photo 2: General view of the north-west front of the barn, from the west (film 2, frame 9)

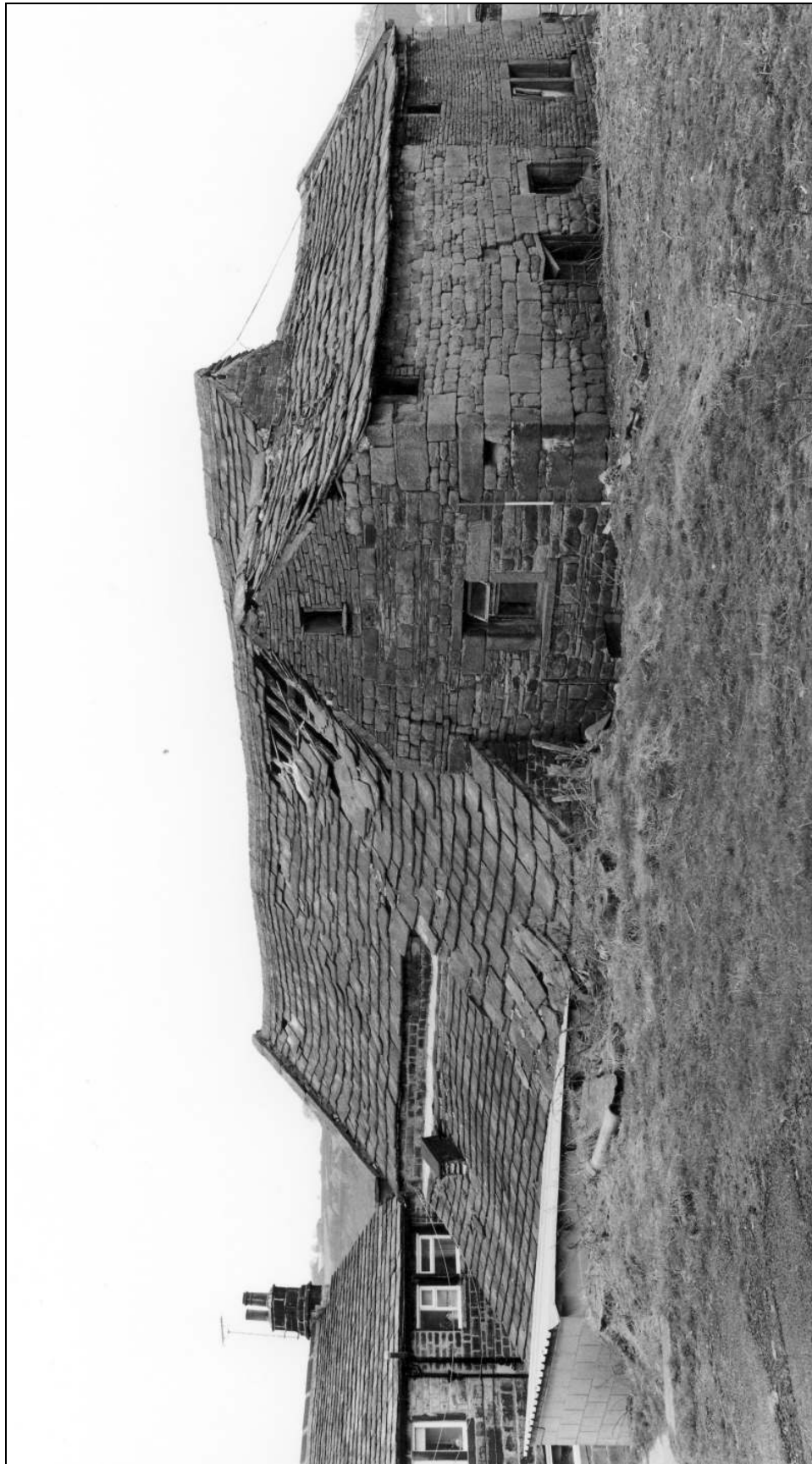


Photo 3: General view of the barn, from the east (film 1, frame 2)



Photo 4: General view of the barn, from the south (film 1, frame 1)



Photo 5: General view of the barn, with stable in the foreground, from the north (film 1, frame 17)

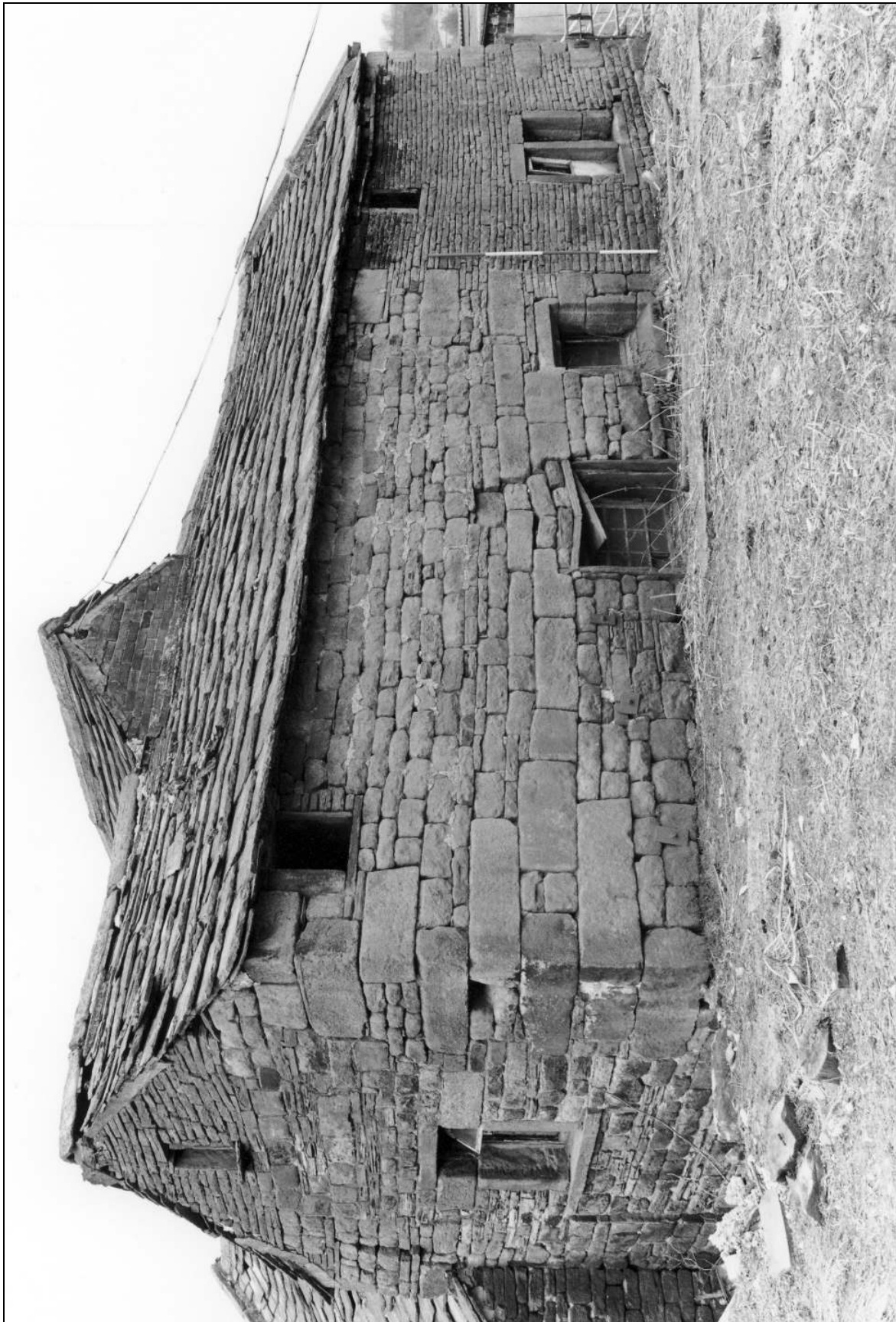


Photo 6: The early wing, from the east (film 1, frame 6)

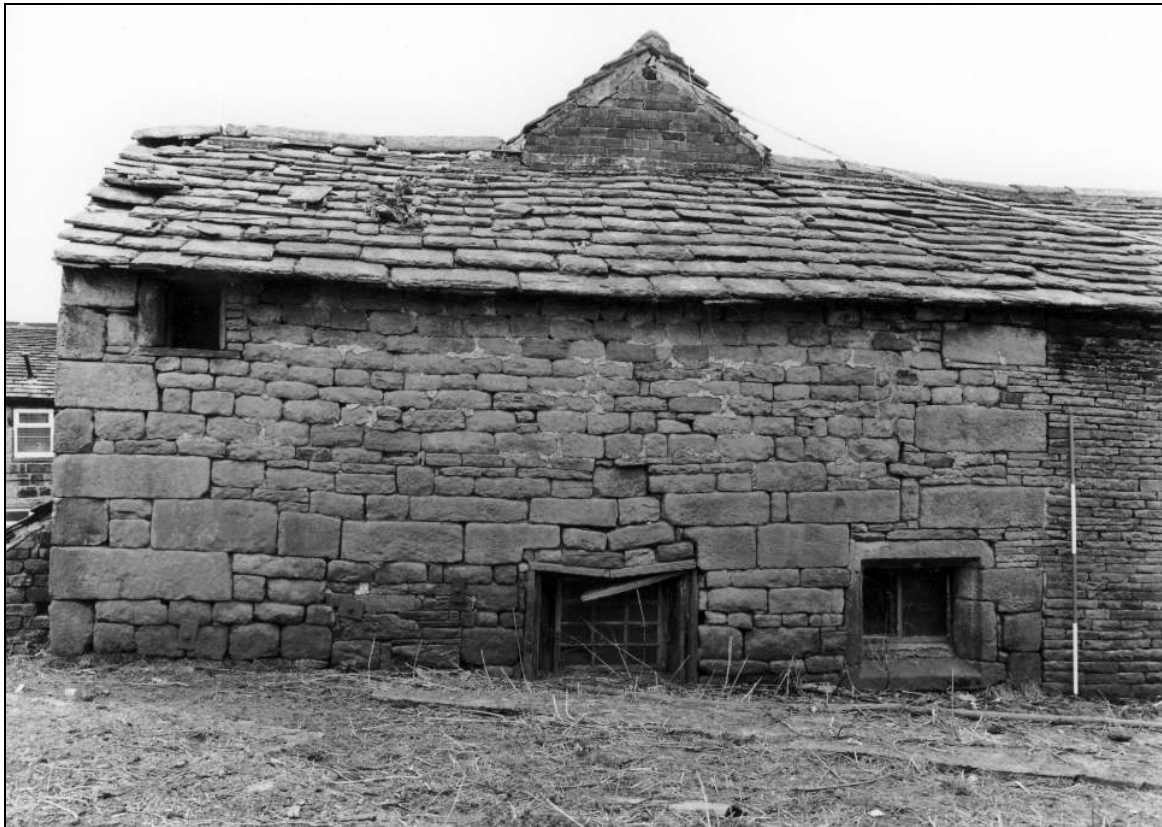


Photo 7: Early wing: north-east elevation (film 1, frame 7)

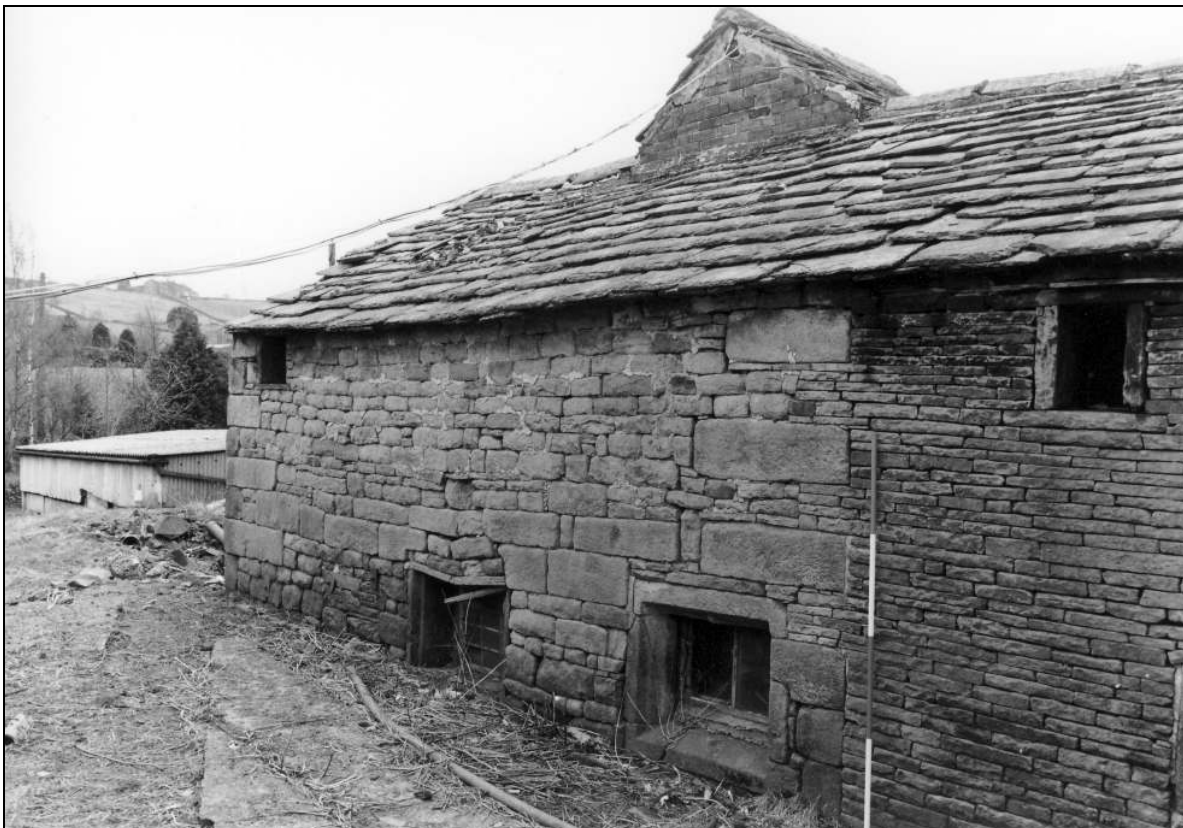


Photo 8: Early wing: north-east elevation (film 1, frame 8)



Photo 9: Early wing: detail of ground floor opening, north-east side (film 1, frame 11)



Photo 10: Early wing: detail of ground floor opening, north-east side (film 1, frame 12)



Photo 11: Early wing: north-east side, after building work and reduction in ground level (film 7, frame 3)



Photo 12: Early wing: detail of infilled opening, north-east side, after building work and reduction in ground level (film 7, frame 5)



Photo 13: Early wing: north-east side, after building work and reduction in ground level (film 7, frame 6)

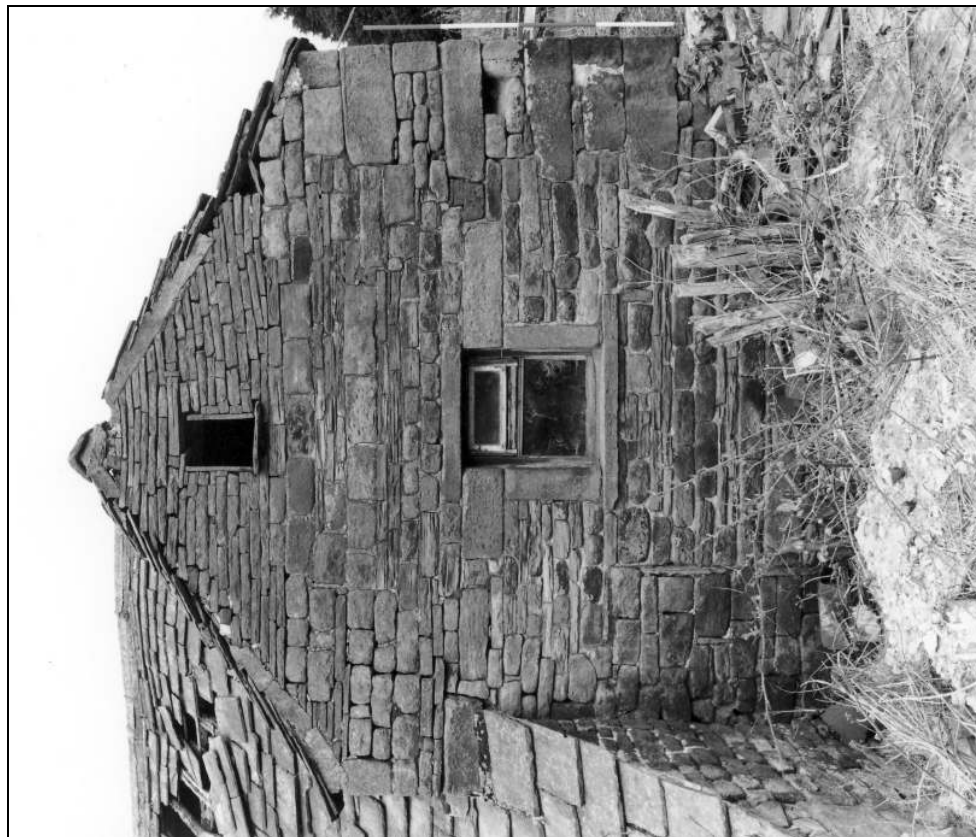


Photo 14: Early wing: south-east gable (film 1, frame 4)



Photo 16: Early wing: south-east gable, after building work and reduction in ground level (film 7, frame 1)



Photo 15: Early wing: south-east gable (film 1, frame 13)



Photo 17: Stable: interior, from the north, showing north-east side of early wing (film 4, frame 3)



Photo 18: Stable: interior, from the north, showing north-east gable of early wing (during building works) (film 6, frame 13)



Photo 19: Barn interior: north-east gable, from the north-west (film 4, frame 18)



Photo 20: Early wing: interior, from the north (film 3, frame 8)



Photo 21: Early wing: interior, from the east (film 3, frame 10)



Photo 22: Early wing: interior, from the south (film 3, frame 11)



Photo 23: Early wing: interior, from the west (film 3, frame 12)



Photo 24: Early wing: detail of chamfers and stops to loft beam
(film 3, frame 13)



Photo 25: Stable: interior, from the west, during building works (film 6, frame 16)



Photo 26: Stable: interior, from the east, during building works (film 6, frame 15)

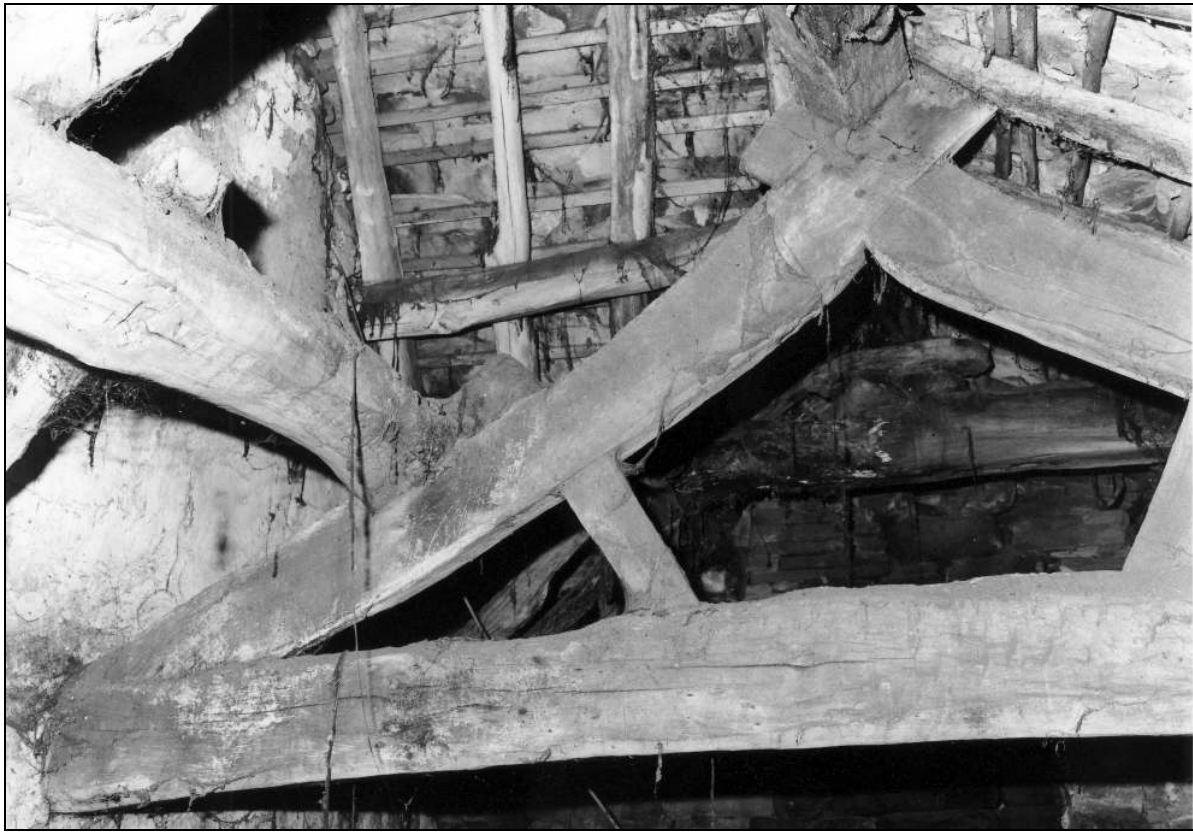


Photo 27: Early wing: detail of roof truss, from the south-east (film 3, frame 16)



Photo 28: Early wing: detail of roof truss, from the south-east (film 3, frame 17)



Photo 29: Early wing: detail of roof truss, from the south-east (film 3, frame 14)



Photo 30: Early wing: detail of roof truss, from the south-east (film 4, frame 6)



Photo 31: Early wing: detail of roof truss, from the south (film 4, frame 7)



Photo 32: Early wing: detail of roof collar with mortices, from the south-east (film 3, frame 18)



Photo 33: The stable added to the early wing, from the north (film 1, frame 16)

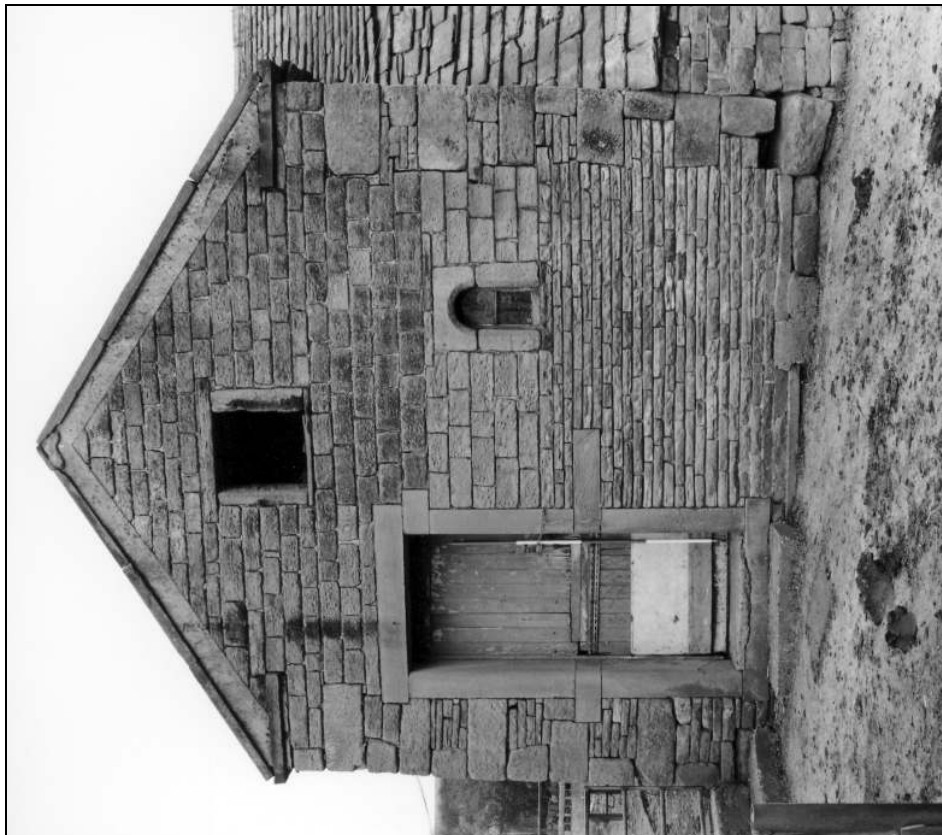


Photo 34: North-west gable of the stable (film 1, frame 18)



Photo 35: The stable, from the west (film 2, frame 1)



Photo 36: Barn interior: north-east gable, from the south (film 4, frame 17)



Photo 37: Barn interior: north-east gable, from the south, during building works (film 6, frame 17)



Photo 38: Detail of arched window in north-west gable of stable
(film 1, frame 14)



Photo 39: North-east side of stable (film 1, frame 10)



Photo 40: Stable: north-east elevation, after building work and reduction in ground level (film 7, frame 4)



Photo 41: South-west side of the stable: detail of eaves (film 2, frame 3)



Photo 42: Stable: interior, from the south-east (film 4, frame 1)



Photo 43: Stable: interior, from the east, during building works (film 6, frame 12)

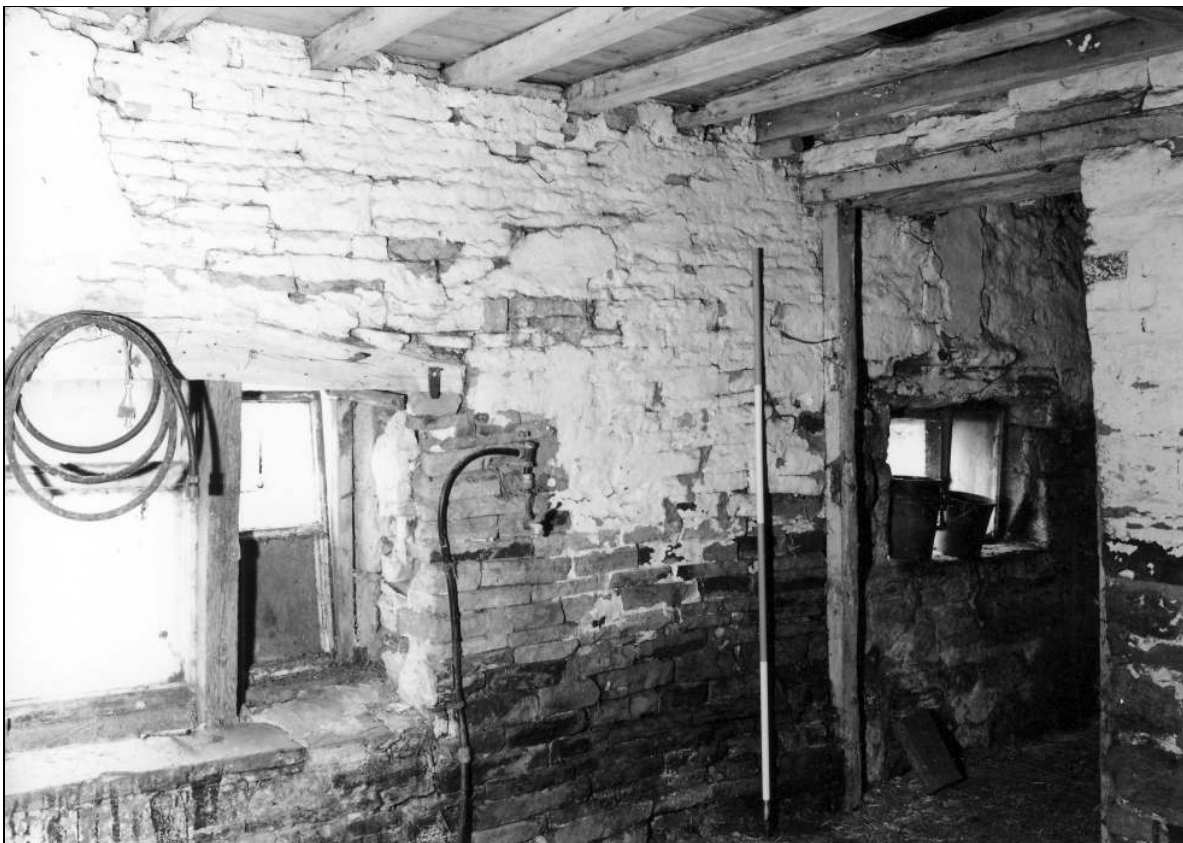


Photo 44: Stable: interior, from the west (film 4, frame 4)



Photo 45: Stable: interior at loft level, from the south-east (film 4, frame 5)

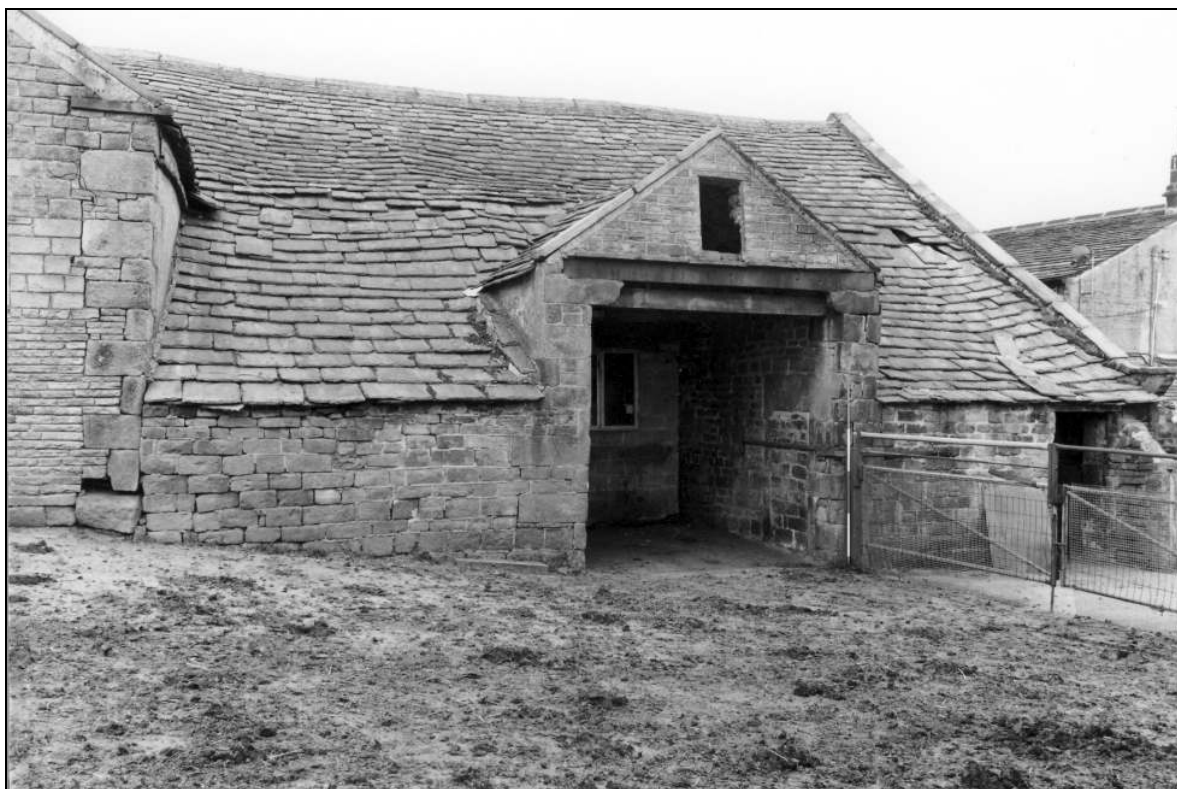


Photo 46: General view of the barn, from the north-west (film 2, frame 5)



Photo 48: Detail of doorway in north-west cart entry (film 3, frame 7)



Photo 47: View into north-west entry of barn, showing doorway to north-east (film 2, frame 7)



Photo 49: View into north-west entry of barn, showing blocked doorway to south-west (film 2, frame 6)



Photo 50: Interior of north-west entry, showing original door lintel and modern roof (film 3, frame 6)



Photo 51: Interior of north-west entry, showing original door lintel (to left) with hinge hole (film 3, frame 4)



Photo 52: Interior of north-west entry, showing original door lintel (film 3, frame 5)



Photo 53: General view of the barn, from the south-west (film 2, frame 13)



Photo 54: The barn's south-west gable, from the west (film 2, frame 11)

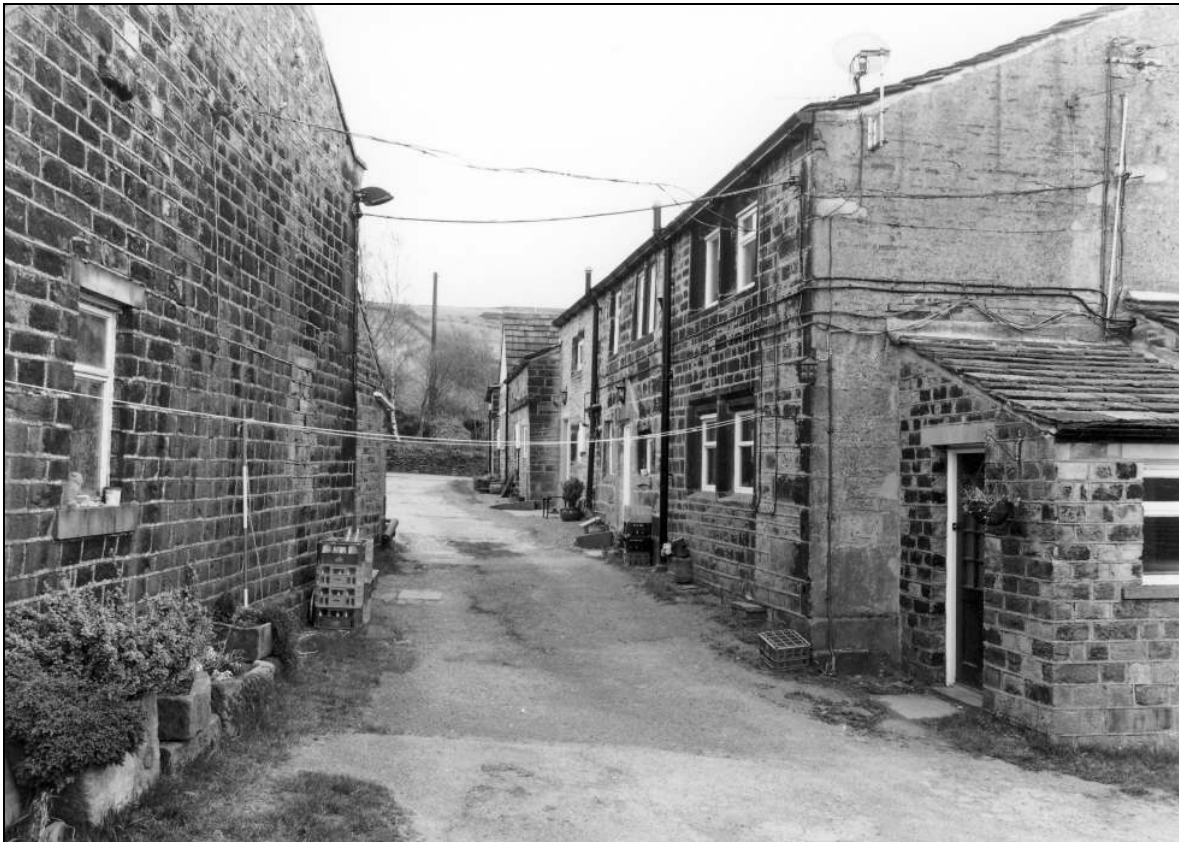


Photo 55: View of the yard between house and barn, from the north-west (film 2, frame 14)



Photo 56: Detail of kneeler, at west corner of barn (film 2, frame 10)

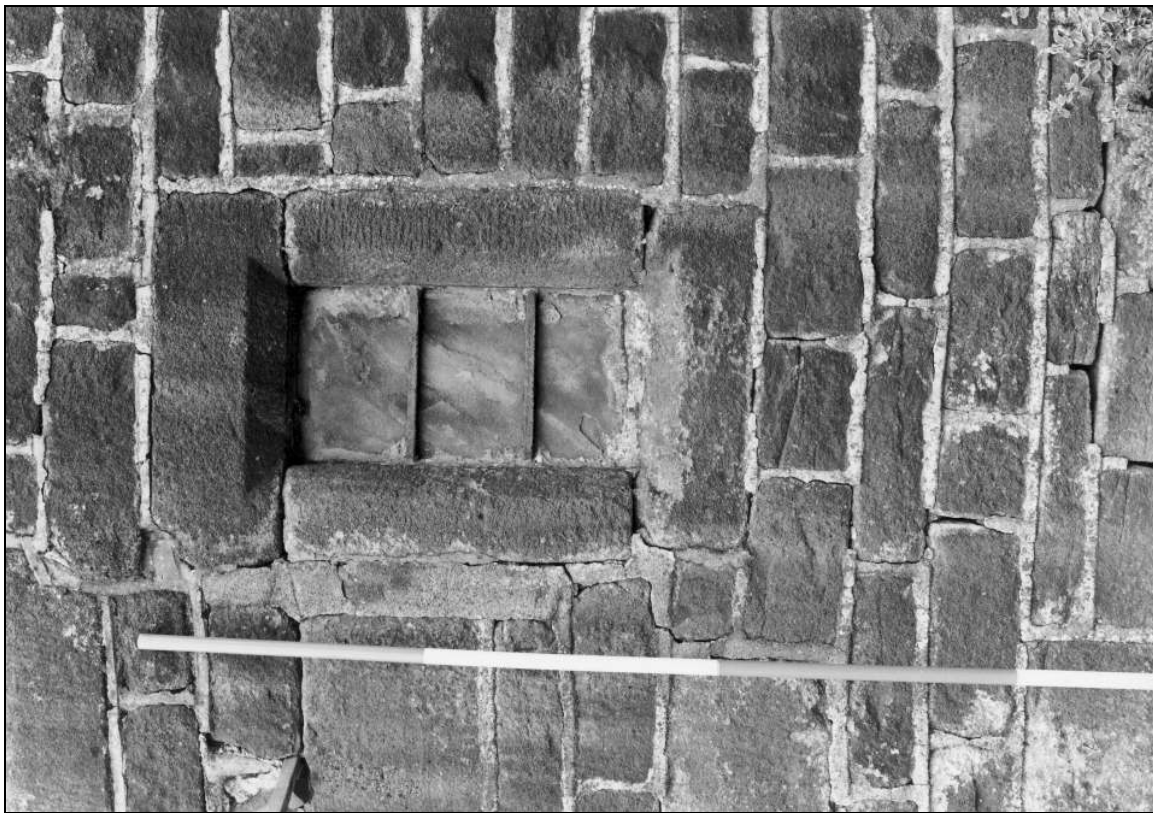


Photo 57: Detail of opening in south-west gable (film 3, frame 1)



Photo 58: View of the yard between house and barn, from the south-east (film 2, frame 17)



Photo 60: The C20 south-east lean-to, from the west (film 2, frame 18)

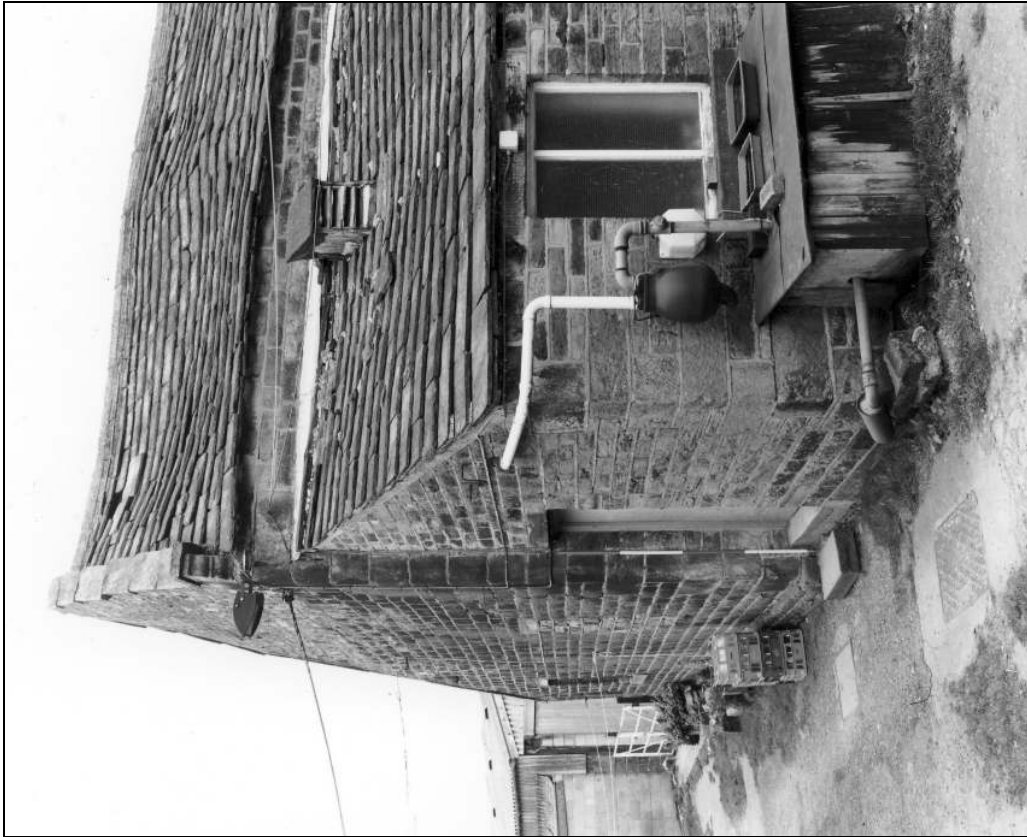


Photo 59: The barn's south-west gable, from the south-east (film 2, frame 16)



Photo 61: Blocked arched doorway in south-east side of barn,
within modern lean-to (film 4, frame 8)

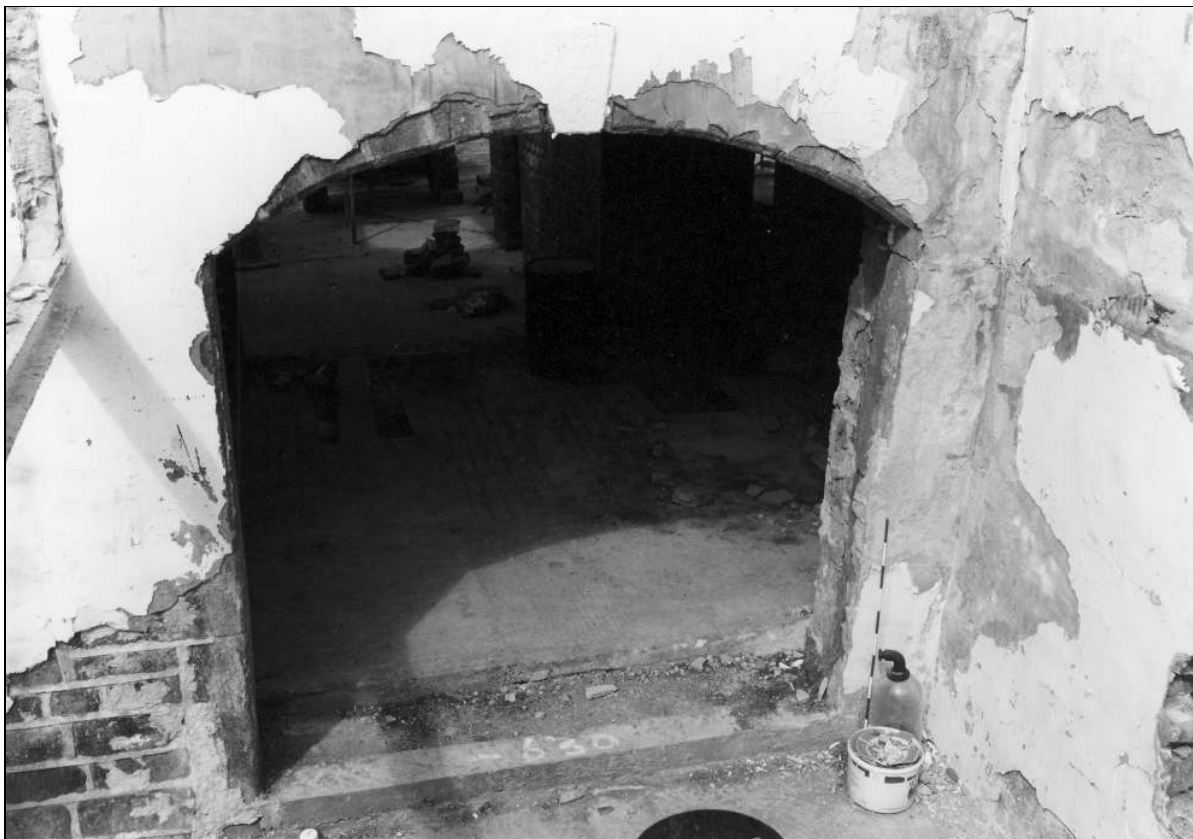


Photo 62: Arched doorway in south-east elevation of barn, after unblocking (film 6, frame 9)



Photo 63: Arched doorway in south-east elevation of barn, after unblocking (film 6, frame 11)



Photo 64: Interior of the C20 lean-to, from the south (film 3, frame 2)



Photo 65: South side of the barn, from the east (film 1, frame 5)



Photo 66: Barn interior: west shippon, from the west (film 4, frame 12)



Photo 67: Barn interior: west shippon, from the east (film 4, frame 11)



Photo 68: Barn interior: west shippon, from the south-east (film 4, frame 10)



Photo 69: Barn interior: north shippon, from the south-east (film 4, frame 16)

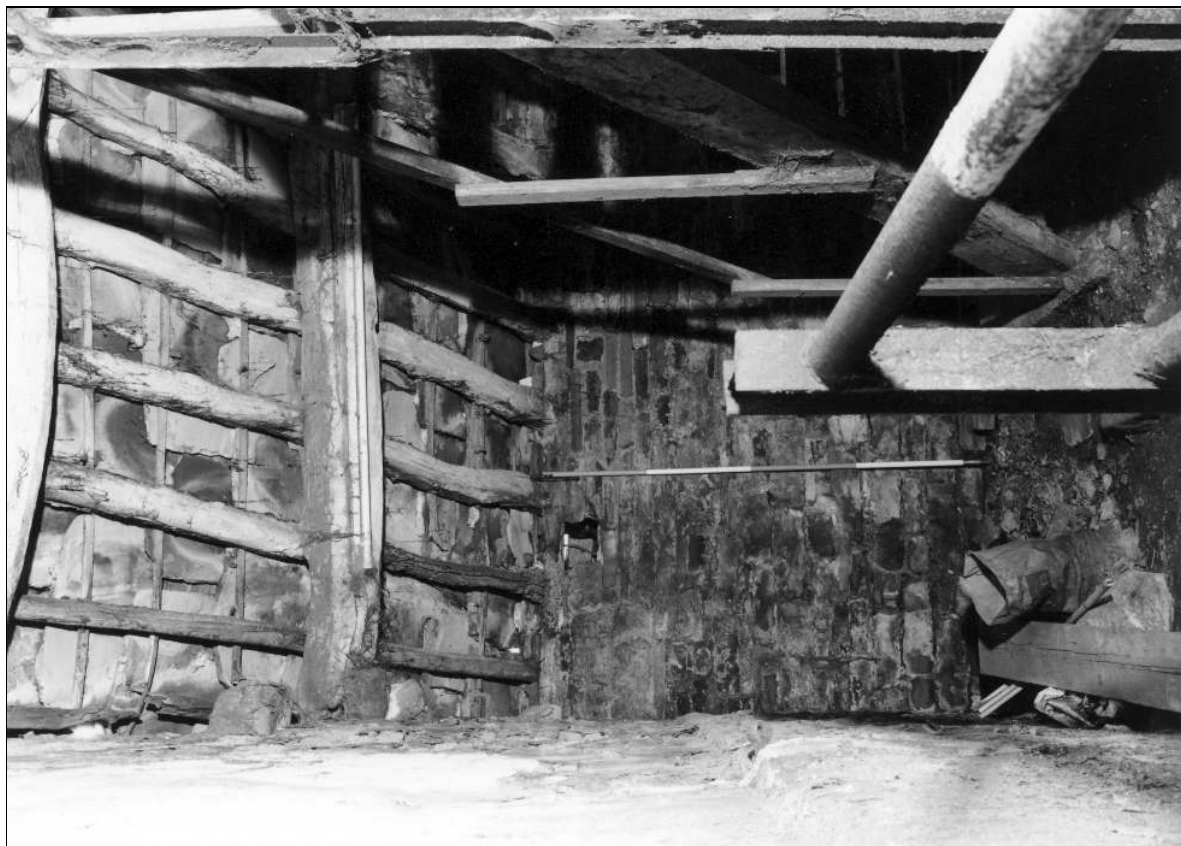


Photo 70: Barn interior: east outshut, from the north-west (film 5, frame 1)



Photo 71: Barn interior: stone base for boskin, east outshut (film 5, frame 3)



Photo 72: Barn interior: blocked doorway to east outshut (film 5, frame 4)

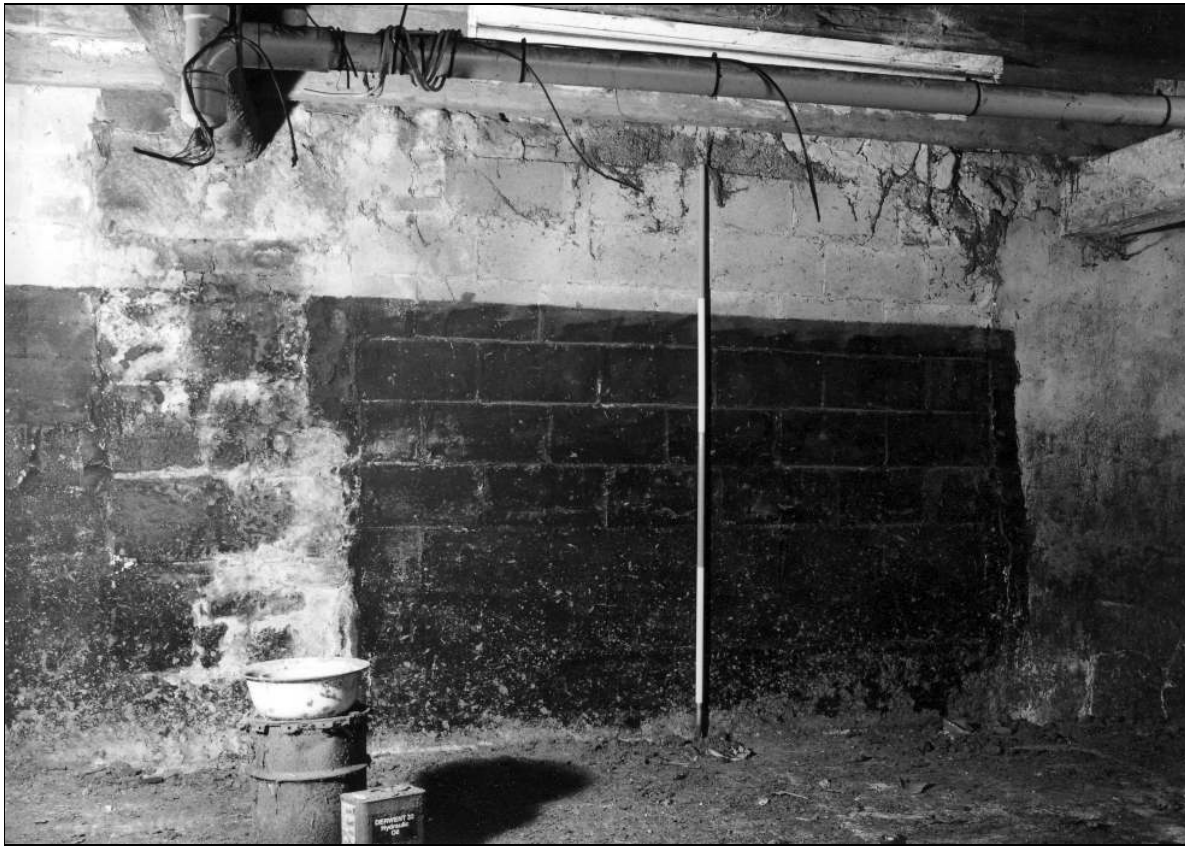


Photo 73: Blocked arched doorway in south-east side of barn, from the north-west (film 4, frame 14)



Photo 74: Barn interior: south corner (film 4, frame 13)

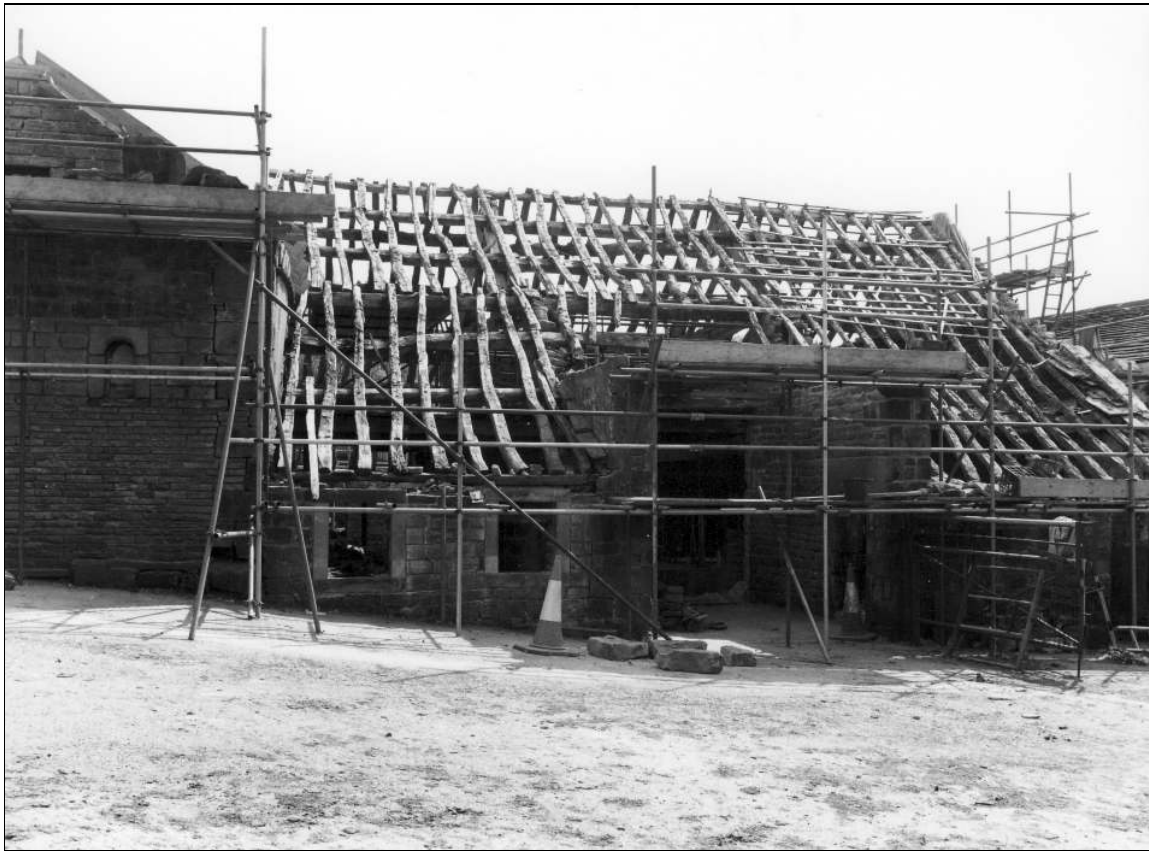


Photo 75: Barn roof, during conversion works, from the north-west (film 6, frame 18)



Photo 76: Barn roof, during conversion works, from the south-east (film 6, frame 7)



Photo 77: Barn interior: view towards north-west entry, at roof level (film 5, frame 12)



Photo 78: Barn interior: north-east roof truss, from the south (film 5, frame 7)



Photo 79: Barn interior: north-east roof truss, from the south-west (film 5, frame 6)



Photo 80: Barn interior: north-east roof truss, from the west (film 5, frame 9)



Photo 81: Barn interior: detail of south-east end of tie-beam to north-east roof truss, from the south-west (film 5, frame 11)



Photo 82: Barn interior: detail of purlin ends and joint numbering at strut in north-east roof truss, from the south (film 5, frame 10)



Photo 83: Barn interior: south-west roof truss, from the east (film 5, frame 13)

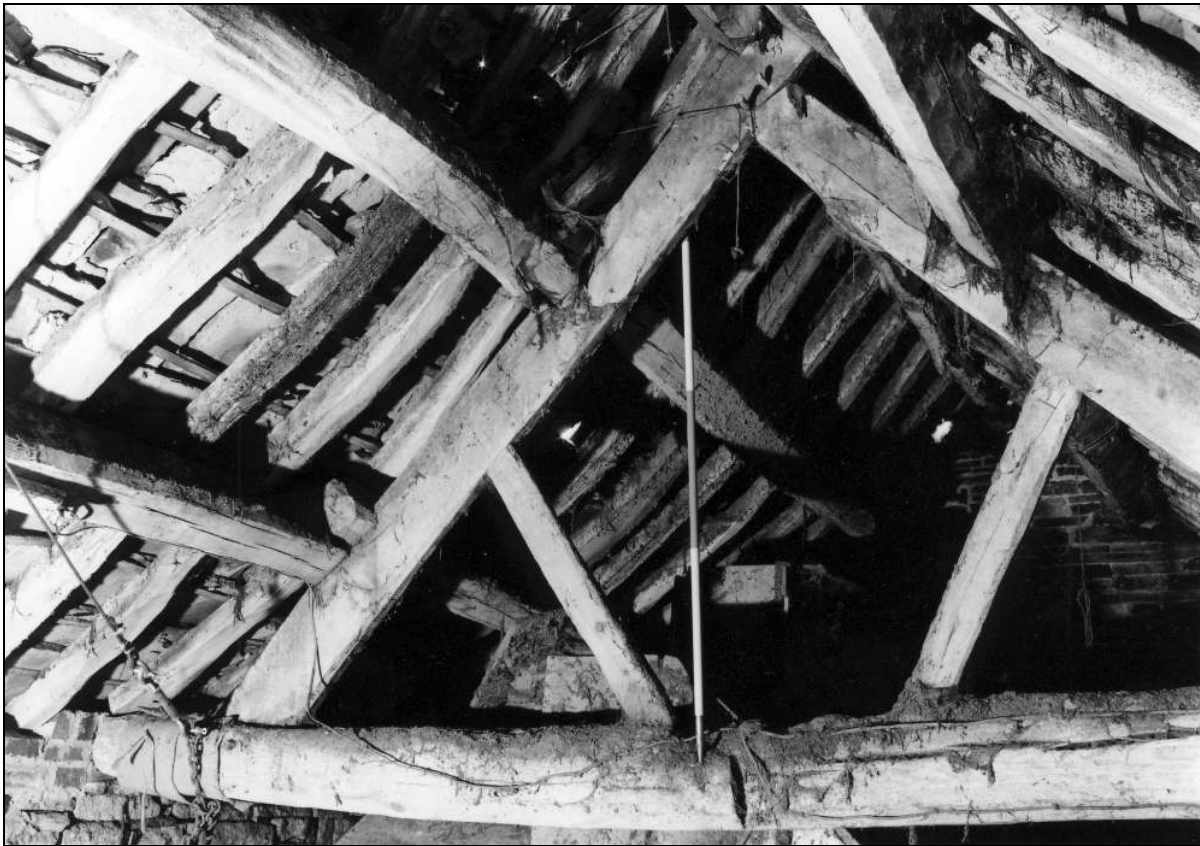


Photo 84: Barn interior: south-west roof truss, from the north (film 5, frame 15)

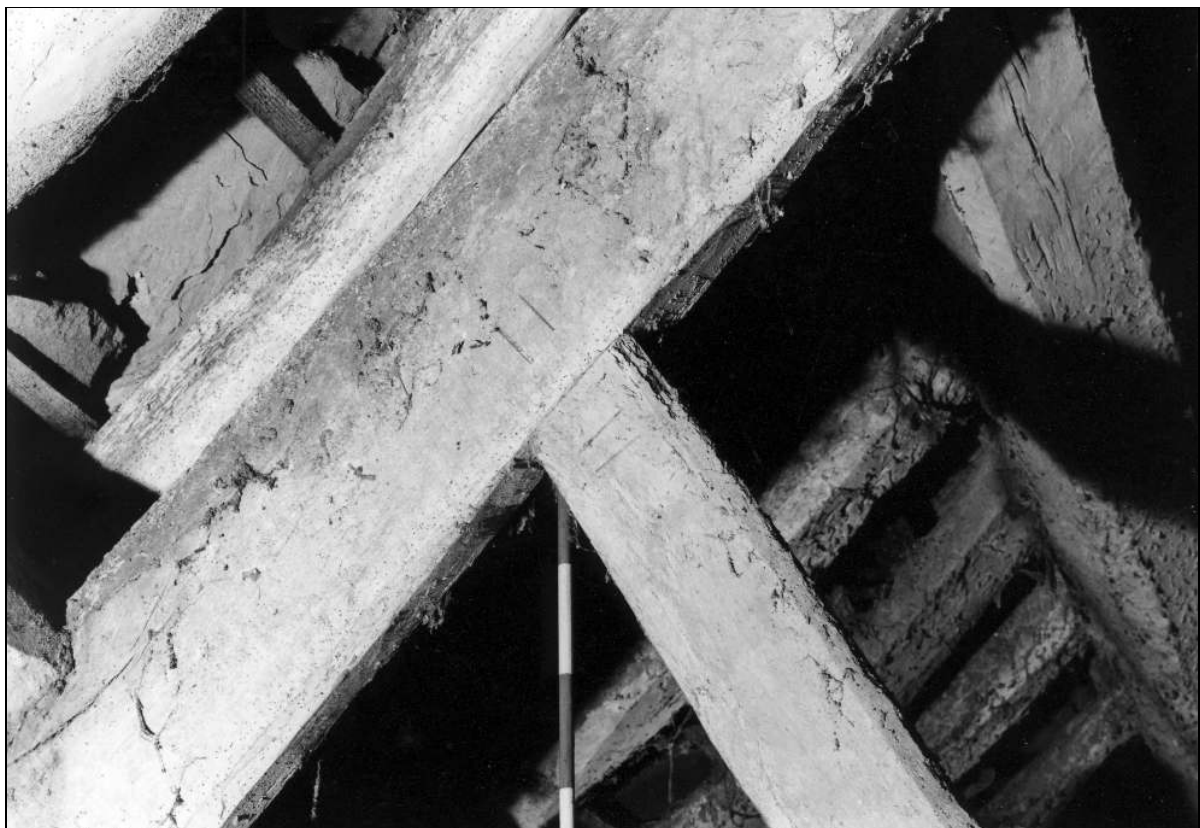


Photo 85: Barn interior: detail of joint numbering on south-west roof truss, from the east (film 5, frame 17)

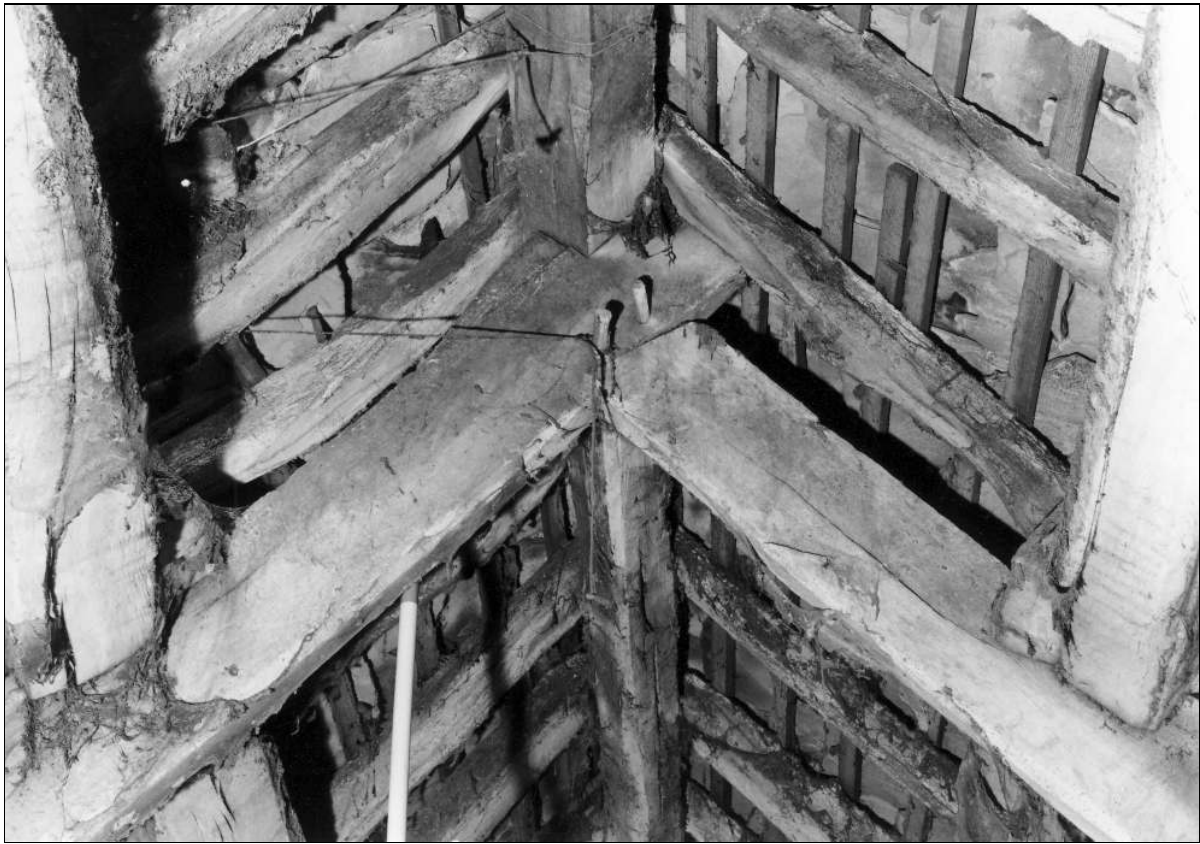


Photo 86: Barn interior: detail of apex of south-west roof truss, from the east (film 5, frame 16)

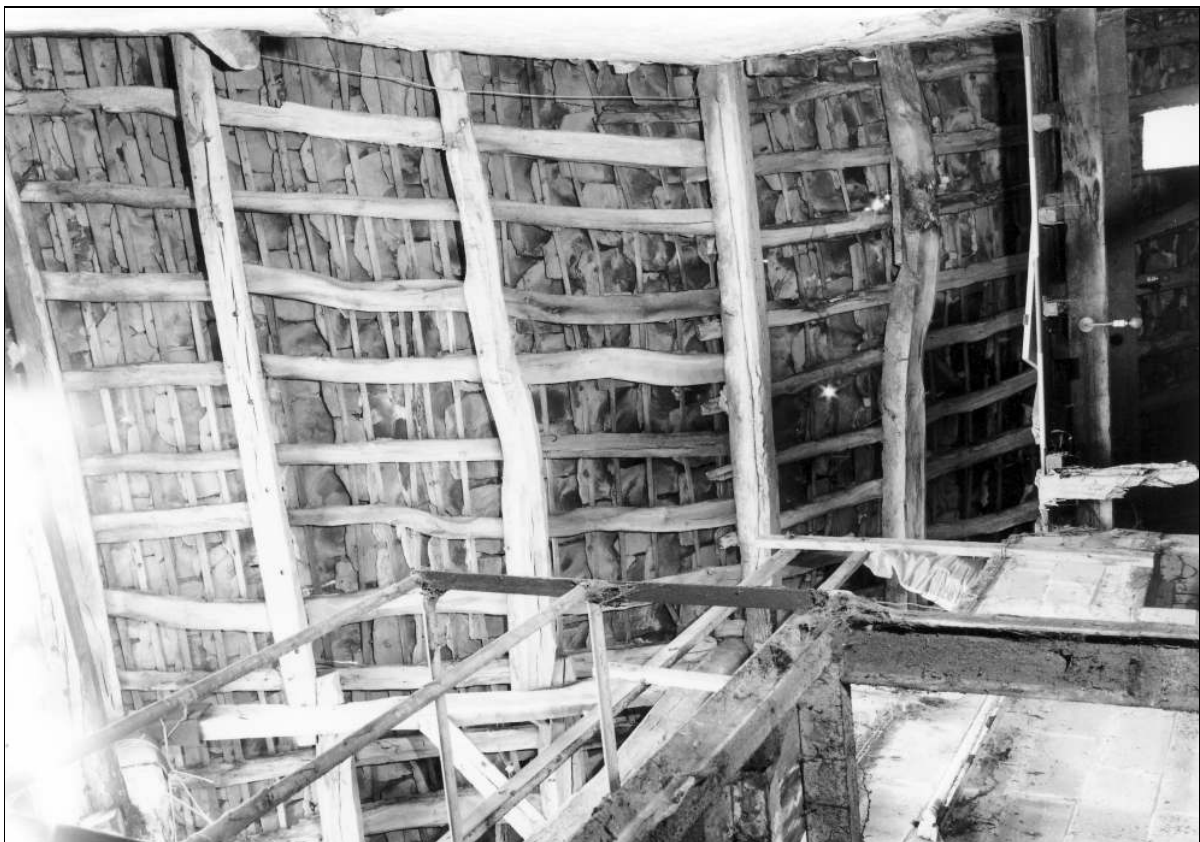


Photo 87: Barn roof: north-west pitch (film 5, frame 5)



Photo 88: Barn interior: roof over west shippon, from the east (film 5, frame 18)