



Photo 31: Cottage 1: south-west gable on ground floor, showing remains of oak timber, cut by modern doorway (film 6, film 5)



Photo 32: Cottage 2: south-west cross-wall on ground floor, showing oak timber, with former recess (?) below (film 4, film 4)



Photo 33: Cottage 2: south-west cross-wall on ground floor, showing oak timber (film 4, film 5)



Photo 34 : Cottage 1: cupboard in south-west gable, beneath former stairs (film 5, film 11)



Photo 35: Cottage 1: remains of stairs in south-west gable (film 6, film 6)



Photo 36: Cottage 1: rear part of former living room (formerly partitioned off), with recess in rear wall (film 5, film 10)



Photo 37: Cottage 1: recess or former shelf base beneath stairs (film 6, film 11)



Photo 38: Cottage 1: rear part of former living room (formerly partitioned off), with recess in rear wall (film 5, film 13)

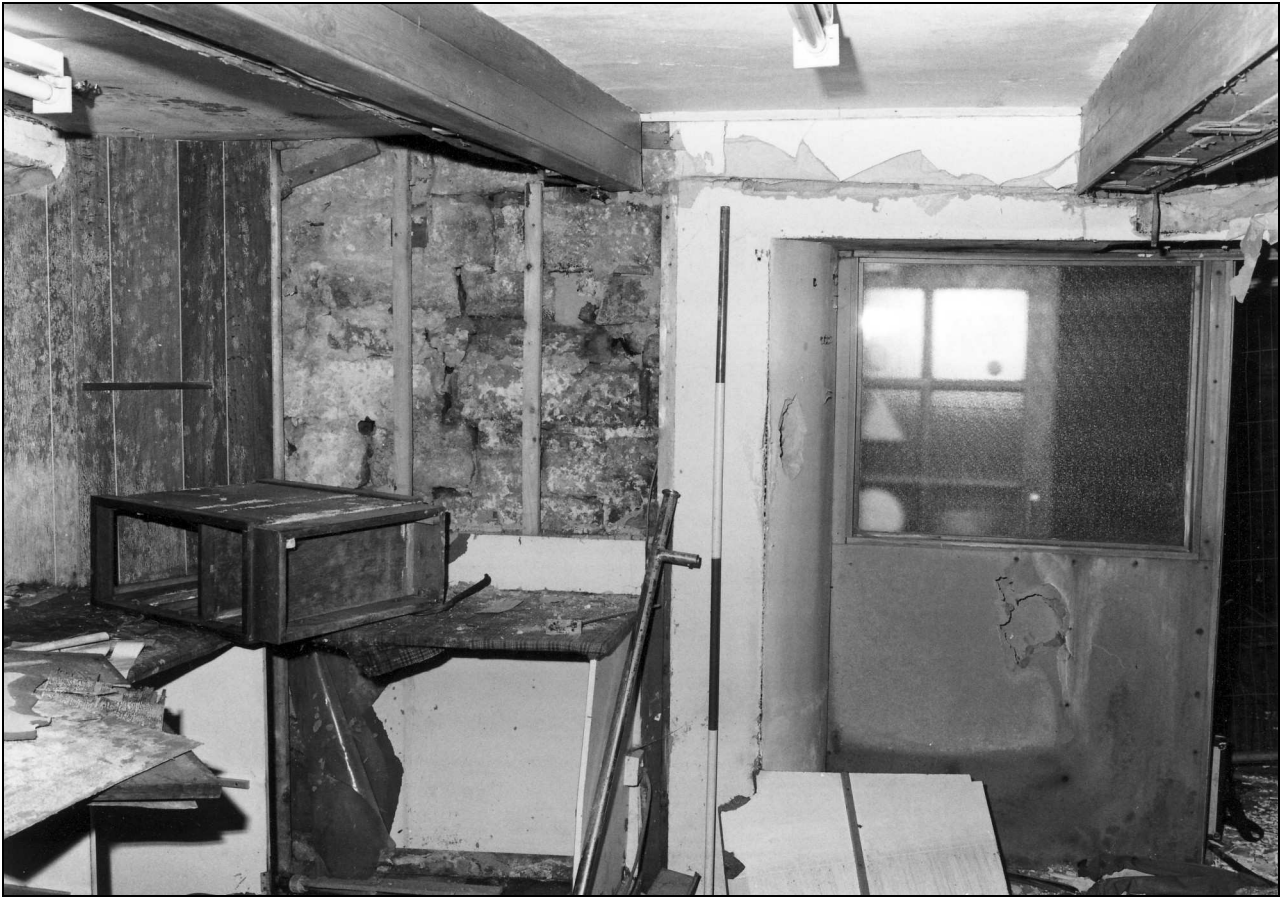


Photo 39: Cottage 4: inserted doorway in cross-wall to cottage 3 (film 1, film 7)



Photo 40: Cottage 1: interior, during demolition (film 5, film 7)



Photo 41: Cottage 1: rear wall, during demolition, showing line of first floor and position of stairs (film 5, film 8)



Photo 42: Cottage 1: ground floor interior during demolition, showing line of first floor and position of stairs (film 5, film 12)



Photo 43: Cottages 1 and 2 during demolition (note modern window sill in foreground) (film 5, film 6)



Photo 44: Cottage 1: south-west gable at first floor, with blocked fireplace (film 1, film 11)



Photo 45: Cottage 1: detail of first floor fireplace (film 6, film 10)



Photo 46: Cottage 4: inserted fireplace in north-east gable, ground floor (film 1, film 10)





Photo 47: Cottage 4: inserted fireplace in north-east gable, ground floor (film 4, film 1)



Photo 48: Cottage 4 during demolition, showing brick flue in gable and modern roof truss (film 4, film 2)



Photo 50: Cottage 3: modern stairs and inserted rear window on first floor (film 1, film 15)



Photo 49: Cottage 3: modern stairs against rear wall (film 1, film 6)



Photo 51: Cottages 2 & 3: first floor, with modern steel beam and roof structure, from the north-east (film 1, film 12)



Photo 52: Cottage 3: small, portable safe on first floor (film 3, film 15)



Photo 53: Cottage 2: ground floor, from the north-east, showing inserted doorway to cottage 1 (film 1, film 4)



Photo 54: Cottage 2, during demolition (film 5, film 2)

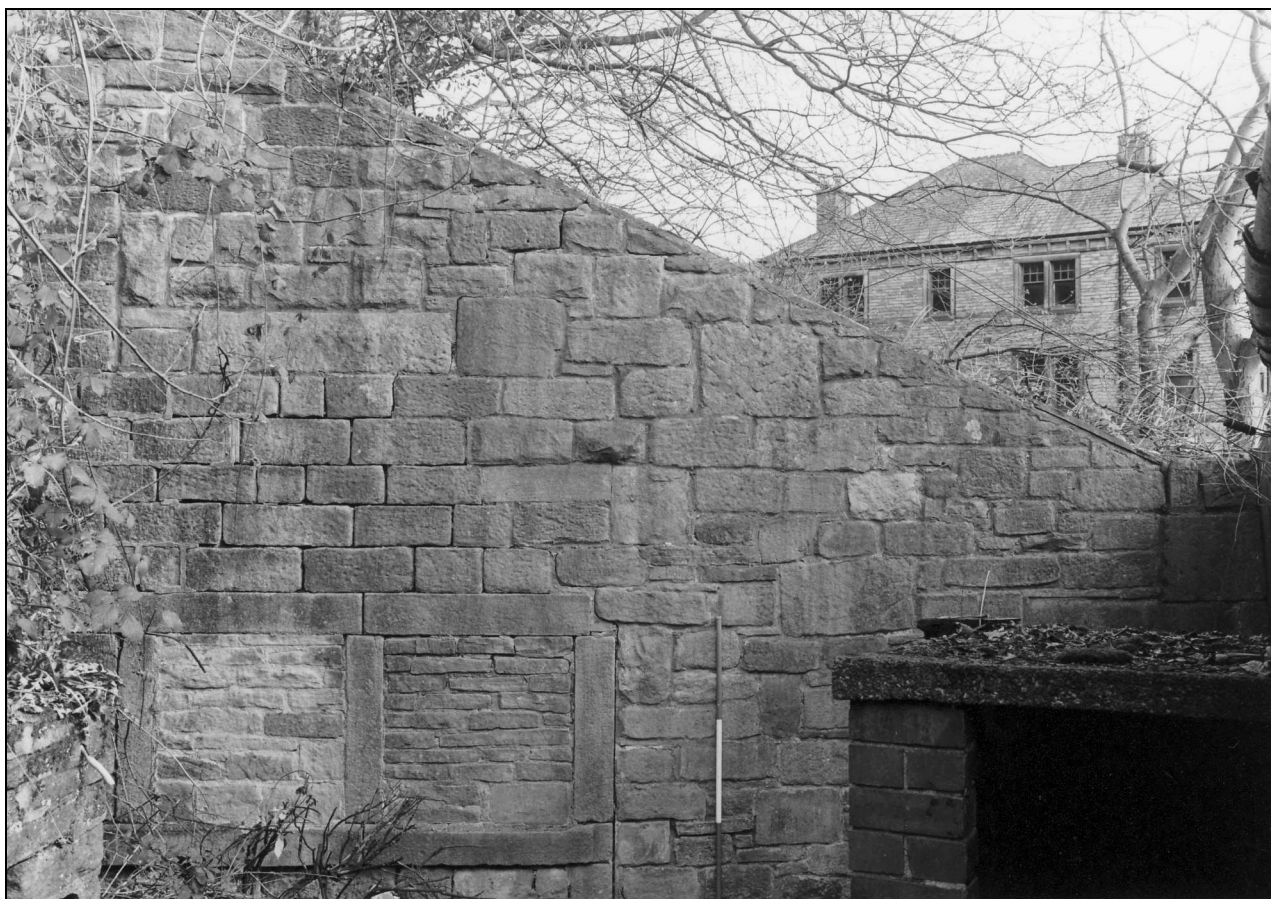


Photo 55: Retaining wall on north side of rear yard, with blocked windows of former building (film 3, film 2)



Photo 56: Retaining wall on north side of rear yard, with blocked windows of former building (film 3, film 1)



Photo 57: Rear yard, with privy at right, from the north (film 3, film 5)



Photo 58: Rear yard, with privy at right, from the north (film 3, film 13)



Photo 59: Rear yard with retaining wall and privy at left, from the north-east (film 3, film 12)



Photo 60: Rear yard, from the south-west (film 3, film 11)