

Former Stable at Lower Fold  
Longsight Road, Langho, Lancashire:  
Archaeological Building Recording



July 2008

---

STEPHEN HAIGH

B u i l d i n g s   A r c h a e o l o g i s t

11 Browcliff   Silsden   Keighley   West Yorkshire   BD20 9PN

Tel/Fax: 01535 658925   Mobile: 07986 612548

[www.stephenhaigh.co.uk](http://www.stephenhaigh.co.uk)   [enquiries@stephenhaigh.co.uk](mailto:enquiries@stephenhaigh.co.uk)

---



# Former Stable at Lower Fold Longsight Road, Langho, Lancashire: Archaeological Building Recording

## CONTENTS

### List of photographs

1	Introduction .....	1
2	Location and current use .....	1
3	Planning background.....	1
4	Historical background.....	2
5	Recording methodology.....	2
6	Description of the building .....	3
7	Conclusion .....	4
	Appendix 1: Contents of the project archive .....	5

### Figures:

1: Location maps	6: Extract from OS 1932 map
2: Block plan	7: Floor plans
3: Extract from OS 1847 map	8: Cross-section
4: Extract from OS 1893 map	9: Block plan with key to photographs
5: Extract from OS 1913 map	10: Floor plans with key to photographs

### Photographs

## SUMMARY

Archaeological building recording was carried out for Mr & Mrs Bowker in May 2008 at a former stable at a farm called Lower Fold, near Langho in Lancashire (NGR: SD 70033514), before its conversion to residential use. The building has a date-stone of 1896, and is of two storeys, the ground floor formerly housing horses, and the upper a feed loft. There is also a re-used date-stone of 1694. This record includes floor plans, a section drawing, photographs, and a written description.

July 2008

---

# STEPHEN HAIGH

B u i l d i n g s   A r c h a e o l o g i s t

11 Browcliff   Silsden   Keighley   West Yorkshire   BD20 9PN  
Tel/Fax: 01535 658925   Mobile: 07986 612548  
[www.stephenhaigh.co.uk](http://www.stephenhaigh.co.uk)   [enquiries@stephenhaigh.co.uk](mailto:enquiries@stephenhaigh.co.uk)

---

**FORMER STABLE AT LOWER FOLD, LONGSIGHT ROAD, LANGHO, LANCASHIRE:  
ARCHAEOLOGICAL BUILDING RECORDING**

**LIST OF PHOTOGRAPHS**

**Photo Subject**

- |    |   |
|----|---|
| 1  | General view of Lower Fold, from the south-east, the former stable at the far right |
| 2  | General view, from the south-east   |
| 3  | General view, from the south-west   |
| 4  | Front, south elevation  |
| 5  | Detail of front entrance and ground floor window                                    |
| 6  | Datestone "HP 1896", in front elevation   |
| 7  | Datestone "IGE 1694", in front elevation  |
| 8  | The west gable  |
| 9  | The east gable  |
| 10 | General view, from the north-west   |
| 11 | Rear, north elevation   |
| 12 | Interior, from the east   |
| 13 | Interior, from the west   |
| 14 | East roof truss, from the west  |



## **FORMER STABLE AT LOWER FOLD, LONGSIGHT ROAD, LANGHO, LANCASHIRE: ARCHAEOLOGICAL BUILDING RECORDING**

### **1 Introduction**

- 1.1 This report presents the results of archaeological building recording at a former stable at Lower Fold, an outlying farm north of the village of Langho, in the Ribble valley in Lancashire. The work was commissioned by the owners and developers Mr & Mrs Bowker, and carried out in May 2008, to fulfil a condition of planning consent from Ribble Valley Borough Council for the conversion of the building to residential use.
- 1.2 The stable is a small, detached, two storey stone building carrying a datestone of 1896, believed to be the date it was built. It contains no internal fixtures but appears to have had stalls for four horses on the ground floor with a feed loft over.
- 1.3 The work was carried out in accordance with the standard requirements of the Lancashire County Archaeology Service for recording historic farm buildings, and involved drawn, written, and photographic recording, with historic maps being incorporated. This report will be submitted to the client, Ribble Valley Borough Council, the Lancashire County Archaeology Service and the English Heritage National Monuments Record, and published on the internet via the Archaeological Data Service, while the project archive will be deposited with the Lancashire Record Office.

### **2 Location and current use**

- 2.1 Lower Fold is a small farmstead (no longer in agricultural use) lying about 1km north of Langho village and 3km west of Whalley, in Billington civil parish (NGR: SD 70033514; Figure 1). The site lies at an altitude of 60m AOD, in a relatively level area of pasture land.
- 2.2 There has been some recent development on the site and there now appear to be four buildings at Lower Fold: the farmhouse, which faces south in the centre of the group; a barn, to the west; a modern garage to the south; and the former stable, about 13m east of the farmhouse and formerly linked to it by other buildings.

### **3 Planning background**

- 3.1 None of the buildings at Lower Fold is believed to be listed as having special architectural or historic interest. Planning consent was granted by Ribble Valley

Borough Council in April 2008 for alterations to the farmhouse and the former stable (described as a barn in the application, no 3/2008/0206), and the construction of a linking extension, with a condition that a record is made of the agricultural building prior to development, which this report and archive are intended to provide.

## **4    Historical background**

- 4.1    Traditional farm buildings are of historic interest because they contribute to an understanding of the vernacular architecture and past farming systems of the region. As a group they are under threat due to redundancy and neglect, as well as their potential for conversion, and records of them can help provide an understanding of this diminishing and irreplaceable stock.
- 4.2    Little is known of the history of Lower Fold but Ordnance Survey maps show that in the 1840s there were six buildings in the farmstead, arranged in an irregular fashion, including one on approximately on the site of the stable (Figure 3). In the early 1890s a larger scale (1:2500) map shows a square building in this position, with a different outline to the building now standing (Figure 4), and this map also shows the present farmhouse and barn together with an aviary to the south. By 1910 the stable had evidently been built in its present form and was linked to the farmhouse (Figure 5), a situation shown more clearly on the 1:2500 map of the 1930s (Figure 6).

## **5    Recording methodology**

- 5.1    The archaeological building recording took place on 21 May 2008, and in accordance with the standard requirements of the Lancashire County Archaeology Service for recording historic farm buildings. It involved drawn, photographic and written records.
- 5.2    The drawn record comprises new floor plans of the building together with a cross-section, produced by hand measurement, showing all significant archaeological detail, and employing conventions based on those specified by English Heritage<sup>1</sup>.
- 5.3    The photographic record was made using a medium format camera with perspective control and other lenses, and black and white film for its archival qualities. External and internal photographs were taken, using either a 1m or 2m ranging pole marked with 0.5m graduations as a scale, and the locations of the photographs are shown on a site plan and copies of the floor plans. All the photographs have been printed to a size of 7" x 5", with one at 10 x 8", and form

---

<sup>1</sup> English Heritage 2006 *Understanding Historic Buildings: A guide to good recording practice*

part of the project archive; they are also copied in this report, where they are referred to by numbers in bold.

## **6 Description of the building**

- 6.1 The former stable stands to the east of the farmhouse and faces south (**1,2**). It measures 9.6m long by 5.8m wide and around 5.8m high at the eaves, and is built from local sandstone rubble with neatly squared, punch-dressed quoins, with eaves brackets and shaped kneelers at the feet of stone gable coping, the latter part of the recently re-slatted roof (**3**). It has been recently sand-blasted and re-pointed.
- 6.2 The front elevation (**4**) has the only original entrance, the jambs of which are of sawn fine-grained sandstone (**5**), and there is a traditional plank stable door in situ. The four windows in this wall have jambs of punch-dressed quoins, while the sills and lintels are of fine-grain stone of the same character as that used in the doorway; the window frames are probably not original however. Incorporated in the fabric at first floor level are two date-stones: the left one is inscribed "HP 1896" (**6**), the right one "IGE [or JGE] 1694" (**7**). 1896 is thought to be a reliable indication of the date of the building in its present form, which accords with the cartographic evidence, and there is a similar one in the barn to the west of the farmhouse, also with HP's initials and a date of the 1890s, where it appears to commemorate an extension; the 1694 stone has no doubt been re-used from an earlier building however. Neither individual has been identified by this author.
- 6.3 The stable's side elevations are unremarkable: the west gable (**8**) has an inserted ground floor doorway and two recesses which probably related to the building which formerly adjoined; there are also a number of earthenware pipes incorporated for ventilation. The opposite, east gable has similar ventilators (**9**), as does the rear elevation (**10,11**), in which the ground floor window may be an insertion, and at first floor level is a blocked forking hole which once served the hay loft.
- 6.4 Inside the former stable there are few fixtures to indicate the original arrangements, and the floor surface has been removed (**12,13**). However the level and nature of the first floor or hay loft can be surmised from sockets which show that there were three beams between the long walls, somewhat irregularly spaced, with joists above, their ends set in the gables. The main beams would probably have held the posts of three stall dividers, for four horses facing north, and there are traces of harness pegs close to the entrance.
- 6.5 There are two roof trusses (**14**): they are of sawn softwood, comprising tie-beam, principal rafters and raking struts, with an iron rod in place of a king-post, with

the principal rafters held together in a bracket; this is characteristic of the late 19th century date.

## **7    Conclusion**

- 7.1    The former stable is of relatively minor interest as a historic building, a consequence of its late 19th century date and the loss of its fixtures and fittings, so that it is now little more than a shell. However it is of some significance in indicating the importance of horses on the farm at that time, when a specialized building was erected for their accommodation, in a prominent position within the site, and the presence of two date-stones within the fabric is also worthy of record.

## Appendix 1: Contents of the project archive

---

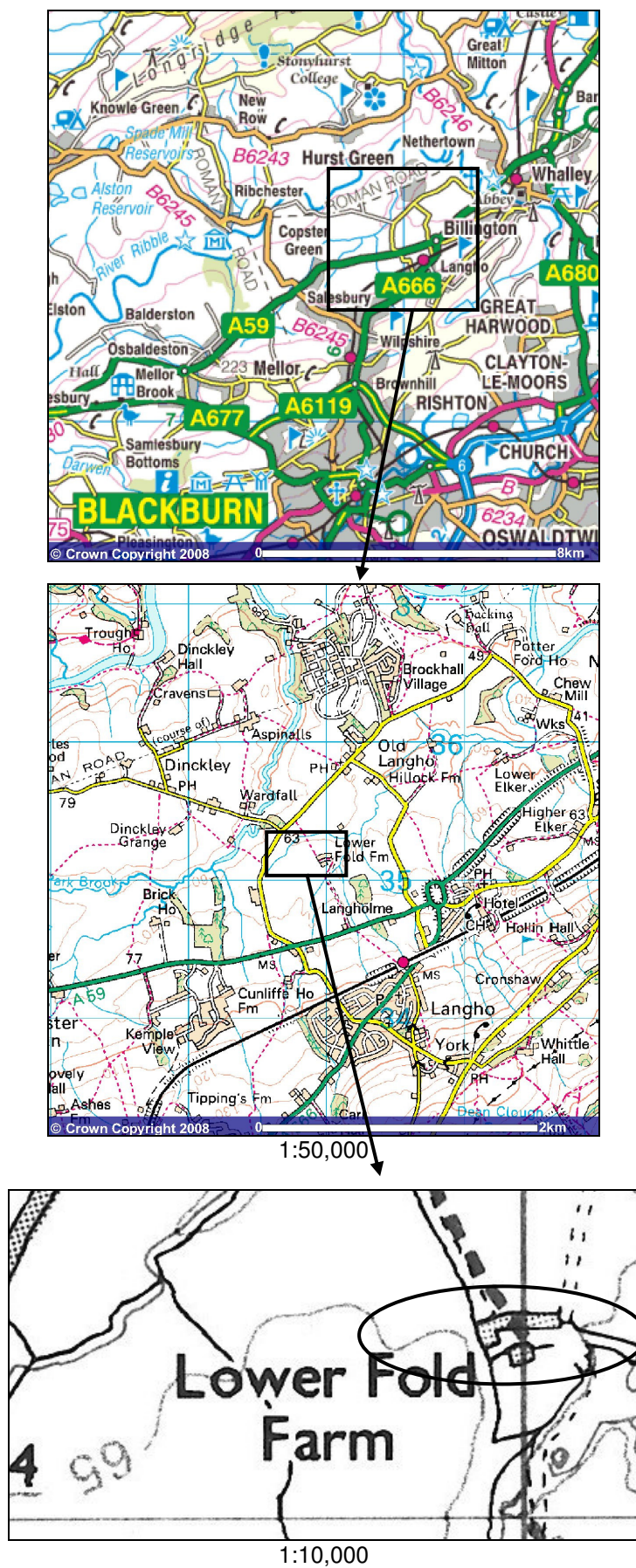
To be deposited with the Lancashire Record Office

1 file, containing:

- a copy of the report
- full set of black and white photographs
- site notes (annotated plans etc)

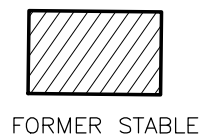
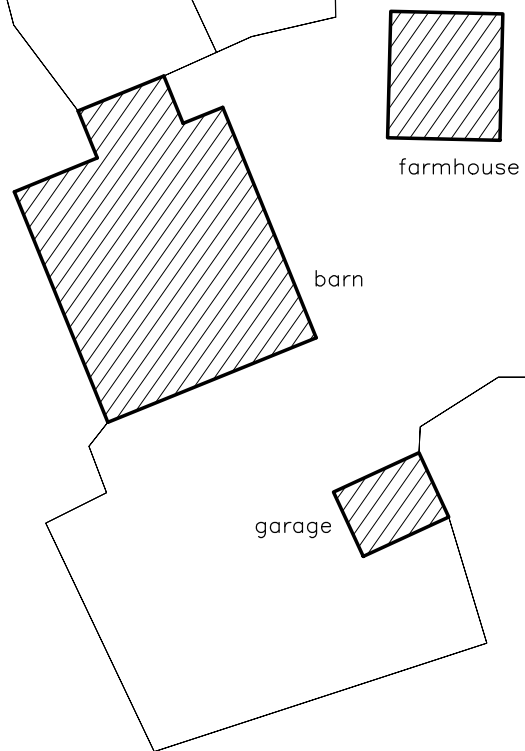
### Complete list of photographs taken, in film order

Photo	Film	Frame	Subject
8	1	1	The west gable
3	1	2	General view, from the south-west
4	1	4	Front, south elevation
2	1	5	General view, from the south-east
9	1	6	The east gable
11	1	7	Rear, north elevation
10	1	8	General view, from the north-west
1	1	10	General view of Lower Fold, from the south-east, the former stable at the far right
13	1	11	Interior, from the west
	1	12	Same as 1/13
12	1	13	Interior, from the east
14	1	14	East roof truss, from the west
7	1	16	Datestone "IGE 1694", in front elevation
6	1	17	Datestone "HP 1896", in front elevation
5	1	18	Detail of front entrance and ground floor window



**Figure 1: Location maps**

Reproduced by permission of Ordnance Survey® on behalf of the Controller of Her Majesty's Stationery Office.  
© Crown Copyright. All rights reserved. Licence no: AL100034008



50m



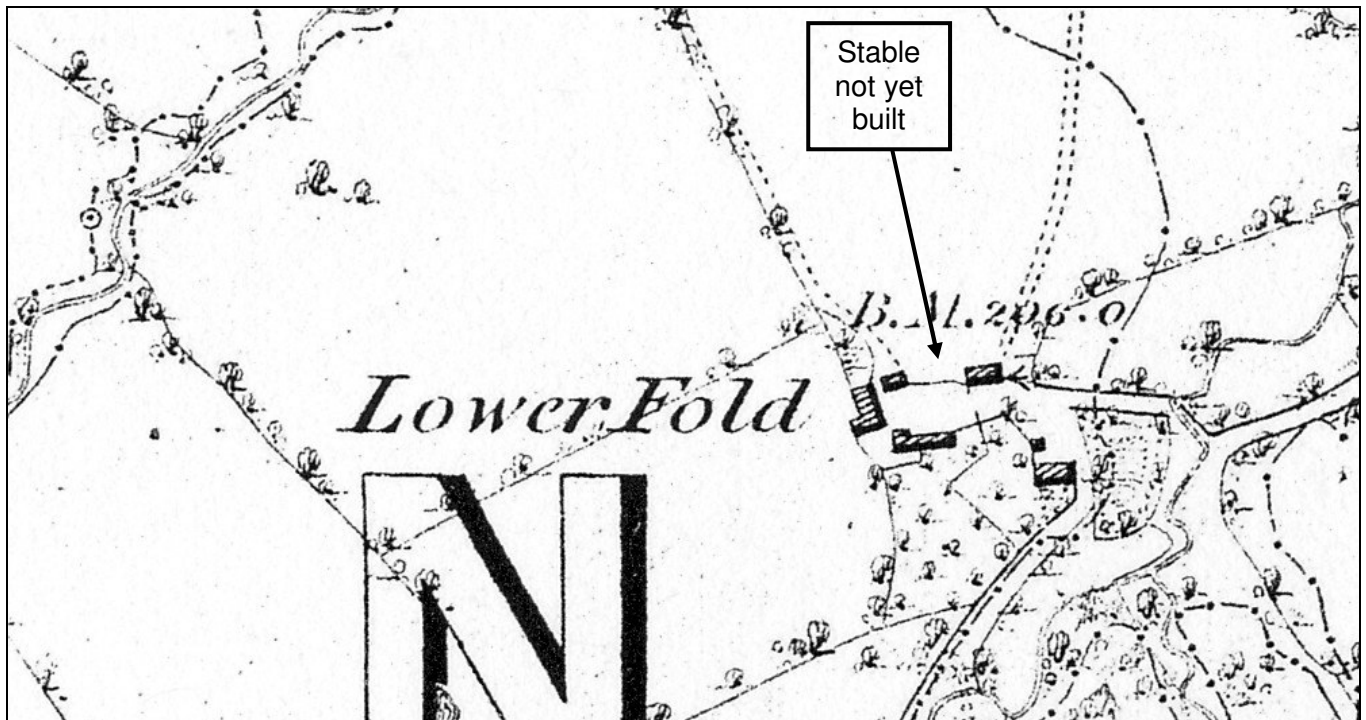
FORMER STABLE AT LOWER FOLD  
LONGSIGHT ROAD  
LANGHO  
LANCASHIRE(NGR: SD 70033514):  
ARCHAEOLOGICAL BUILDING RECORDING

FIGURE 2:  
BLOCK PLAN

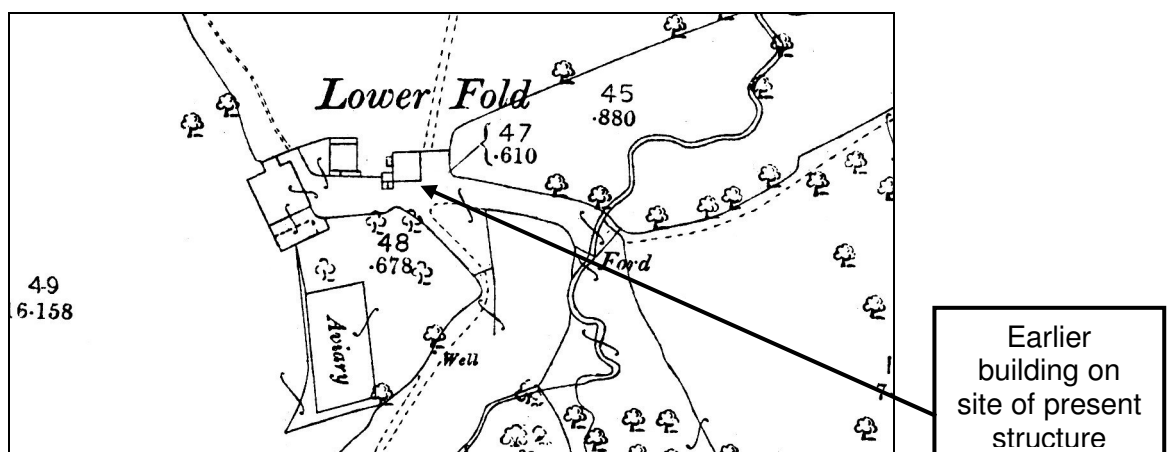
SCALE: 1:500

DATE OF SURVEY: MAY 2008

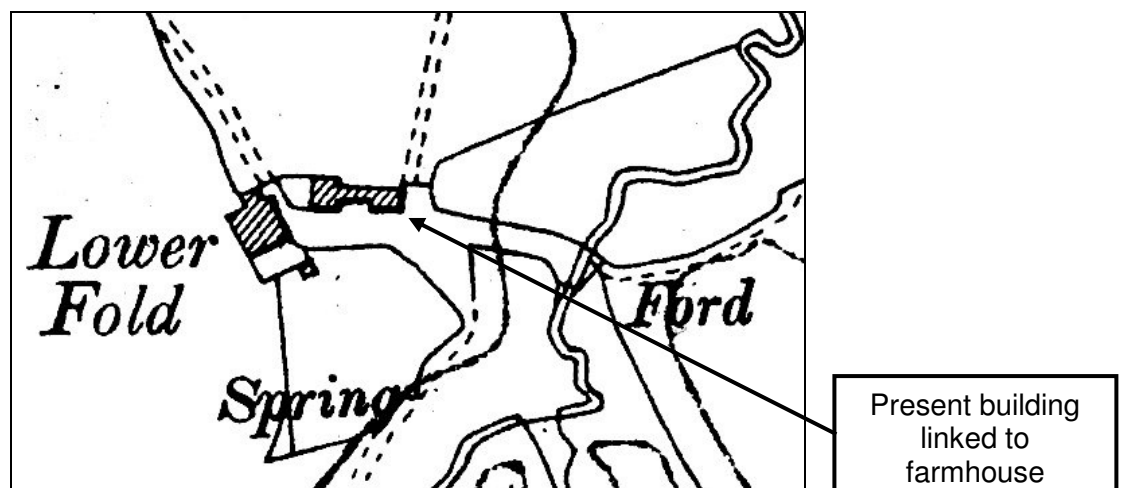
STEPHEN HAIGH  
Buildings Archaeologist



**Figure 3:** Ordnance Survey 6" to mile map (enlarged to 1:2500), published 1847 (survey date: 1844)  
Sheet no: Lancashire, 54

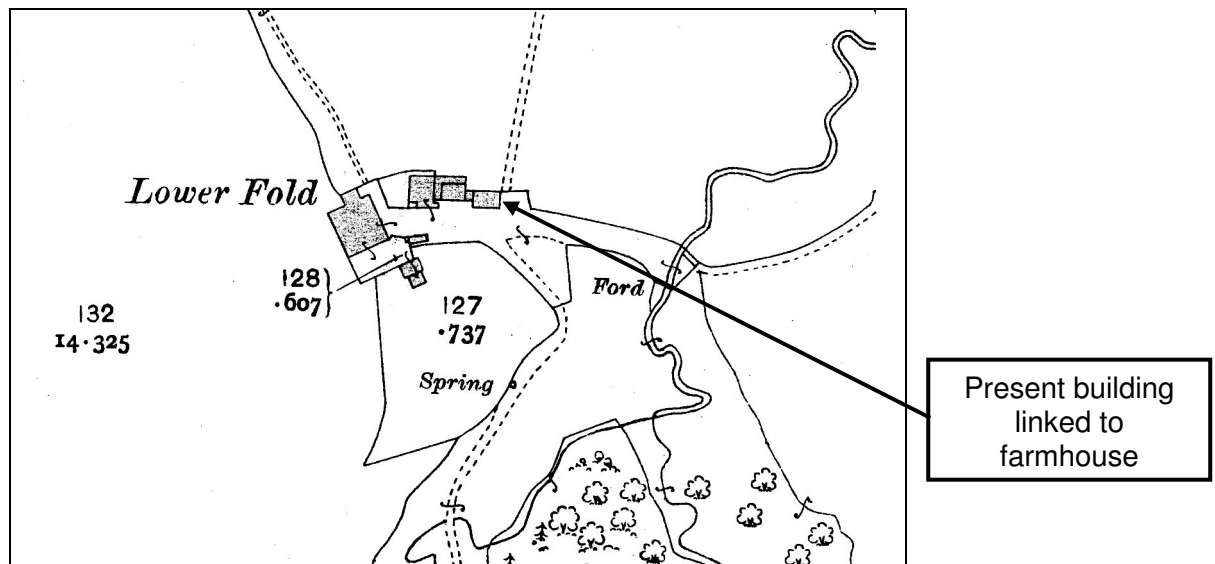


**Figure 4:** Ordnance Survey 1:2500 map, published 1893 (survey date: 1892)  
Sheet no: Lancashire, 54.16

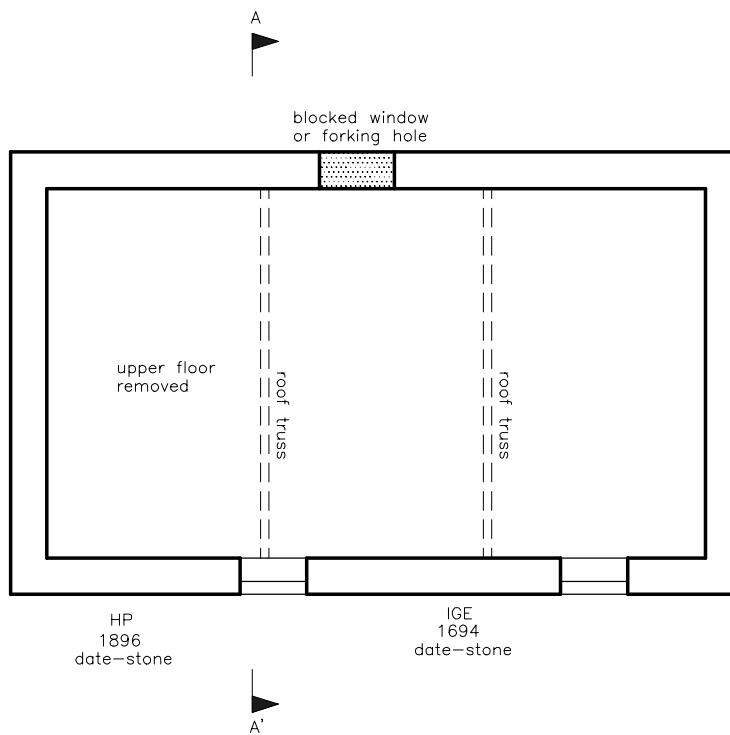


**Figure 5:** Ordnance Survey 6" to mile map (enlarged to 1:2500), published 1913 (revision date: 1910)  
Sheet no: Lancashire, 54SE

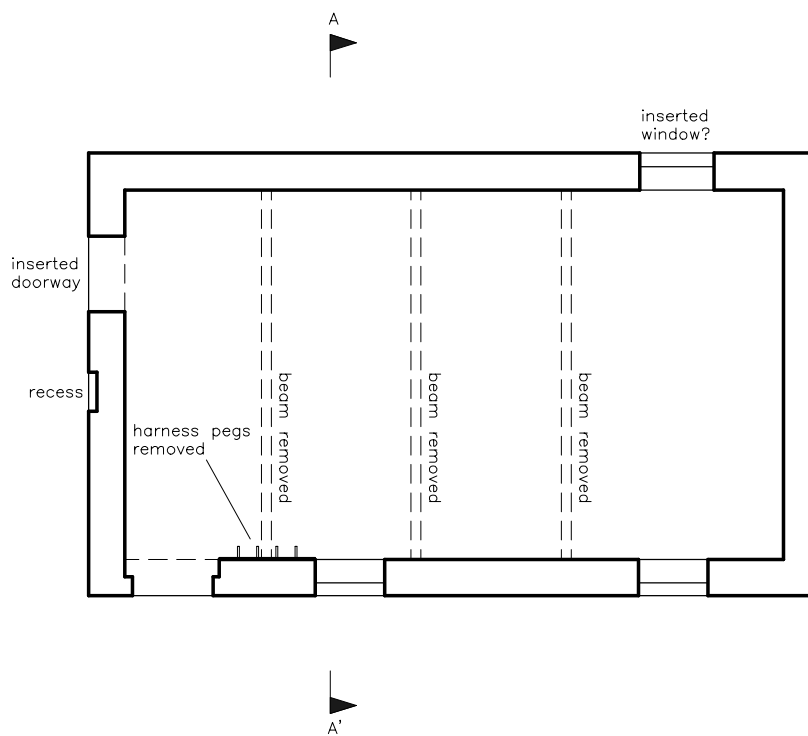




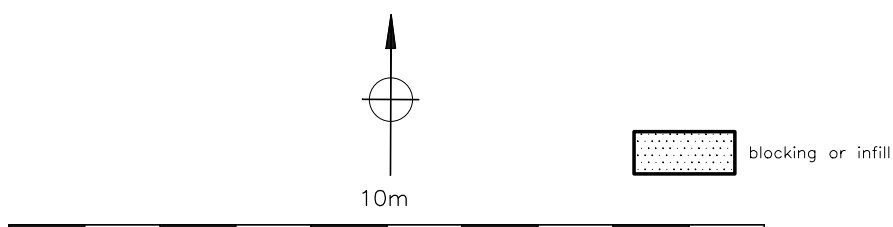
**Figure 6:** Ordnance Survey 1:2500 map, published 1932 (revision date: 1930)  
Sheet no: Lancashire, 54.16



UPPER FLOOR PLAN



GROUND FLOOR PLAN



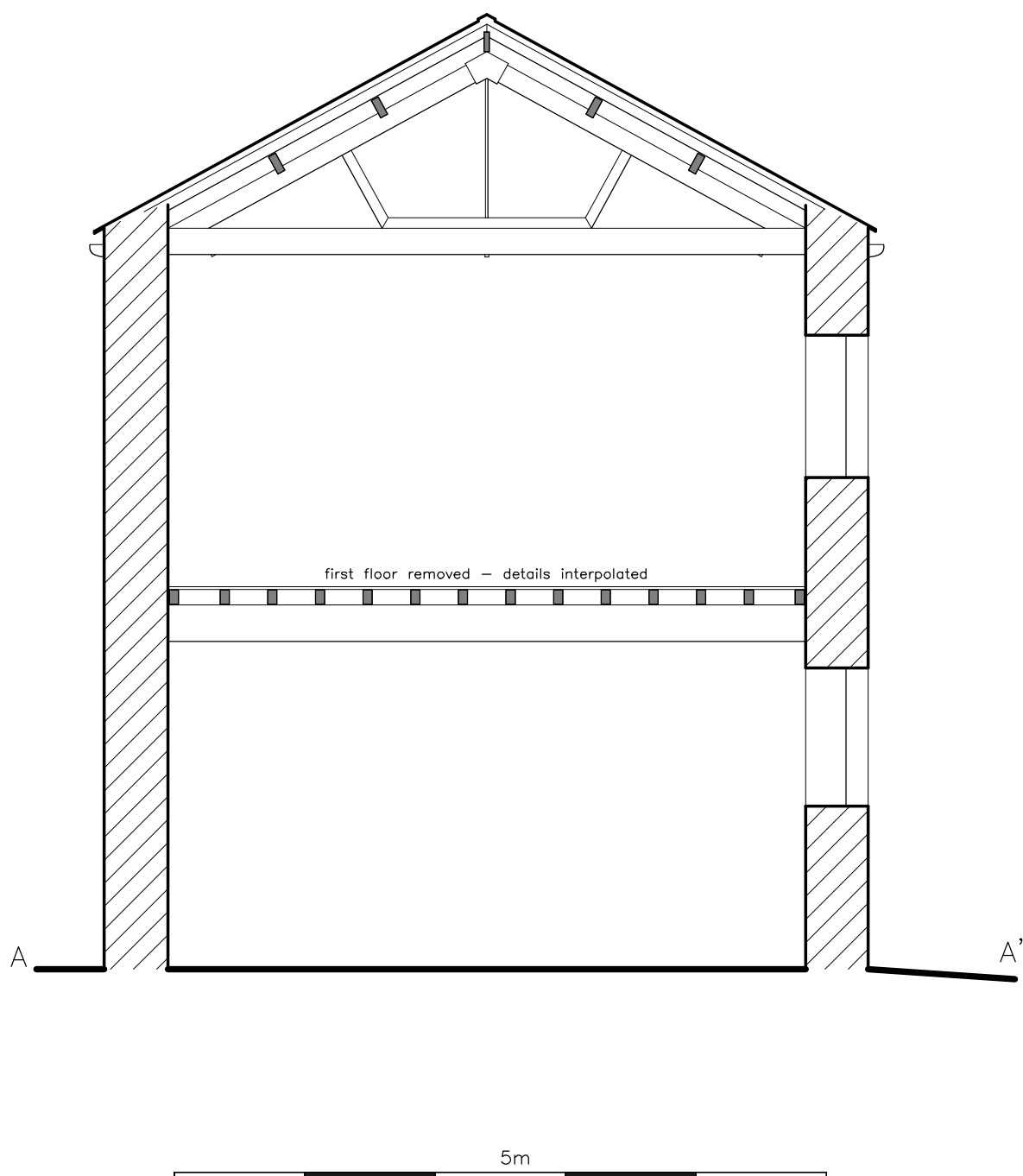
FORMER STABLE AT LOWER FOLD  
LONGSIGHT ROAD  
LANGHO  
LANCASHIRE (NGR: SD 70033514):  
ARCHAEOLOGICAL BUILDING RECORDING

FIGURE 7:  
FLOOR PLANS

SCALE: 1:100

DATE OF SURVEY: MAY 2008

STEPHEN HAIGH  
Buildings Archaeologist



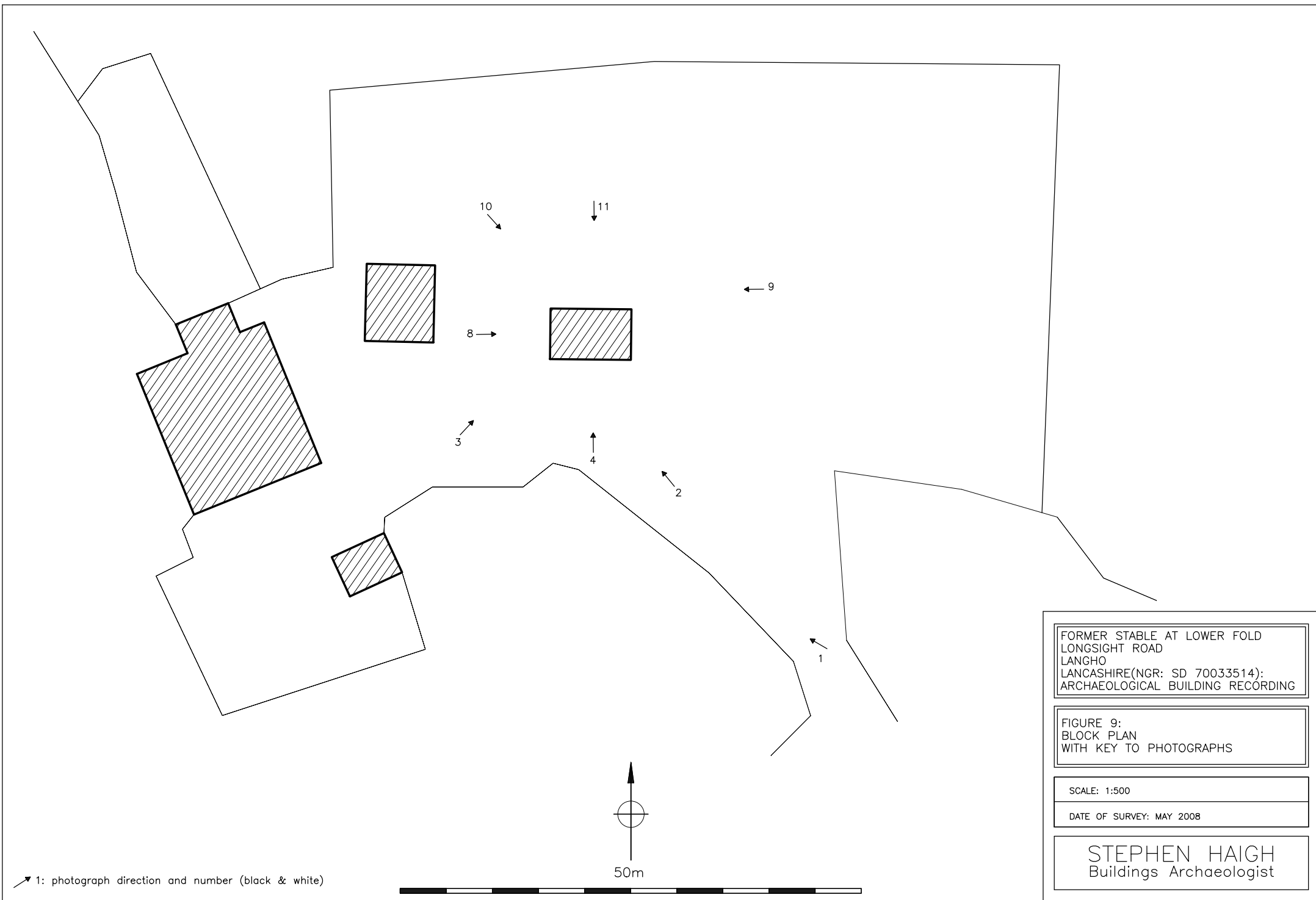
FORMER STABLE AT LOWER FOLD  
 LONGSIGHT ROAD  
 LANGHO  
 LANCASHIRE (NGR: SD 70033514):  
 ARCHAEOLOGICAL BUILDING RECORDING

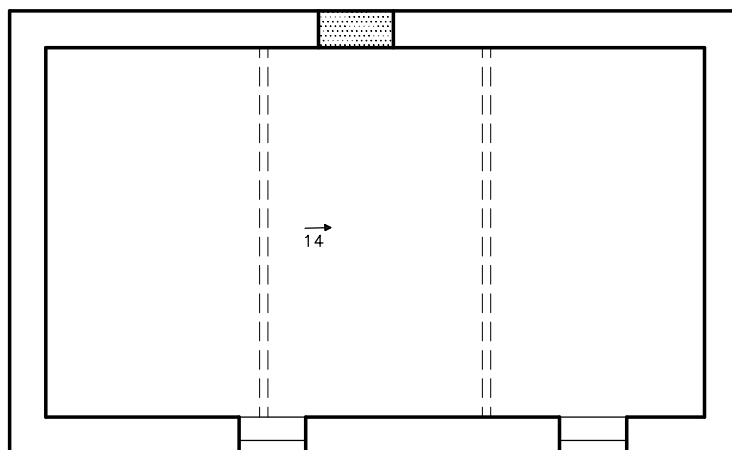
FIGURE 8:  
 CROSS-SECTION

SCALE: 1:50

DATE OF SURVEY: MAY 2008

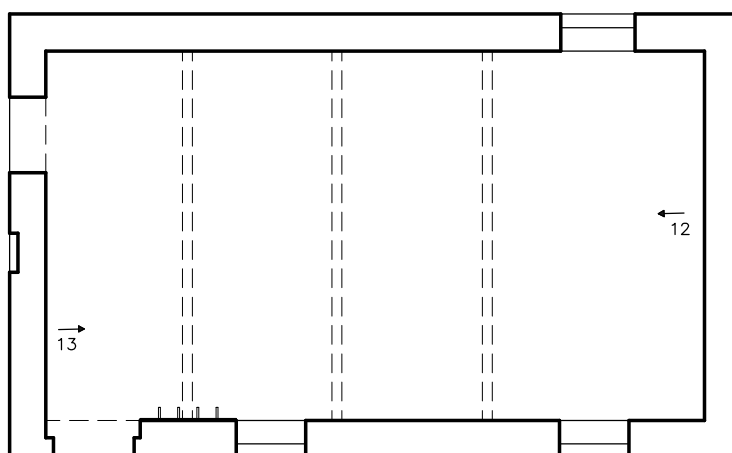
STEPHEN HAIGH  
 Buildings Archaeologist





↑<sub>6</sub>

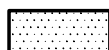
↑<sub>7</sub>



↑<sub>5</sub>



10m



↗<sub>1</sub>: photograph direction and number

FORMER STABLE AT LOWER FOLD  
LONGSIGHT ROAD  
LANGHO  
LANCASHIRE (NGR: SD 70033514):  
ARCHAEOLOGICAL BUILDING RECORDING

FIGURE 10:  
FLOOR PLANS  
WITH KEY TO PHOTOGRAPHS

SCALE: 1:100

DATE OF SURVEY: MAY 2008

STEPHEN HAIGH  
Buildings Archaeologist



Photo 1: General view of Lower Fold, from the south-east, the former stable at the far right



Photo 2: General view, from the south-east



Photo 3: General view, from the south-west





Photo 4: Front, south elevation



Photo 5: Detail of front entrance and ground floor window





Photo 6: Datestone "HP 1896", in front elevation



Photo 7: Datestone "IGE 1694", in front elevation

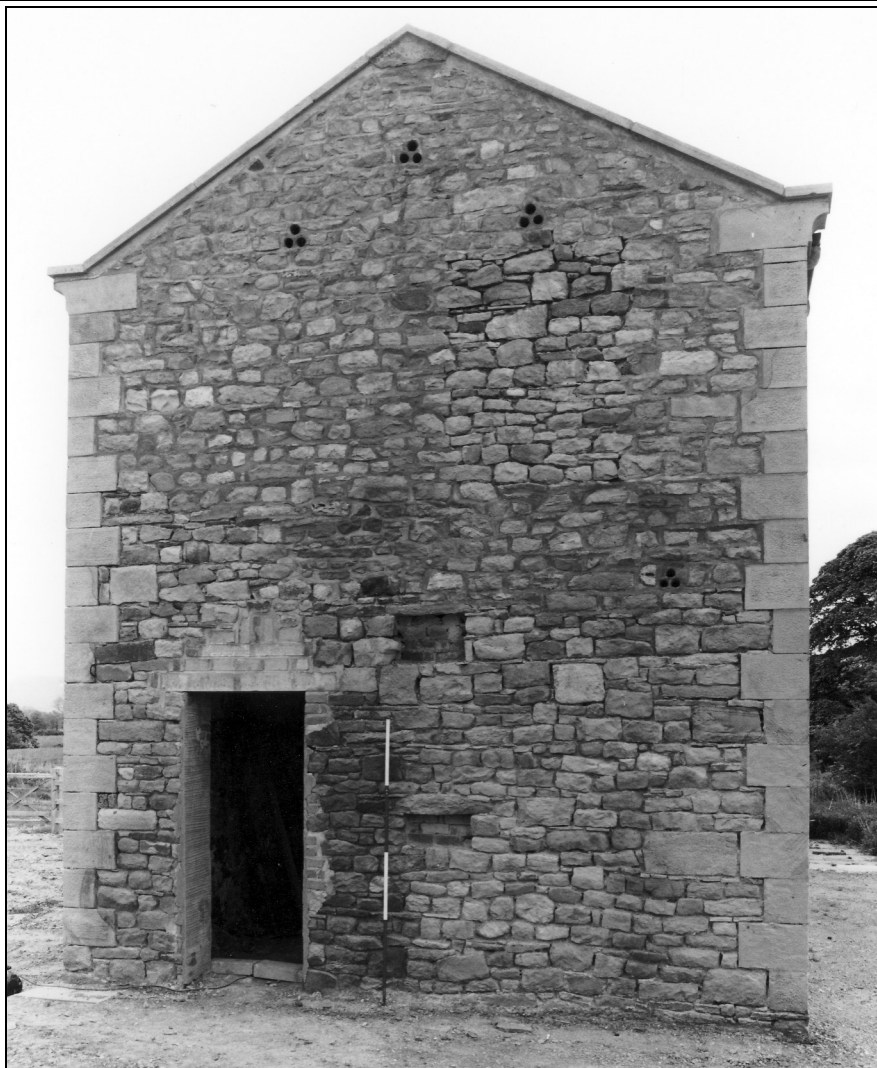


Photo 8: The west gable



Photo 9: The east gable



Photo 10: General view, from the north-west

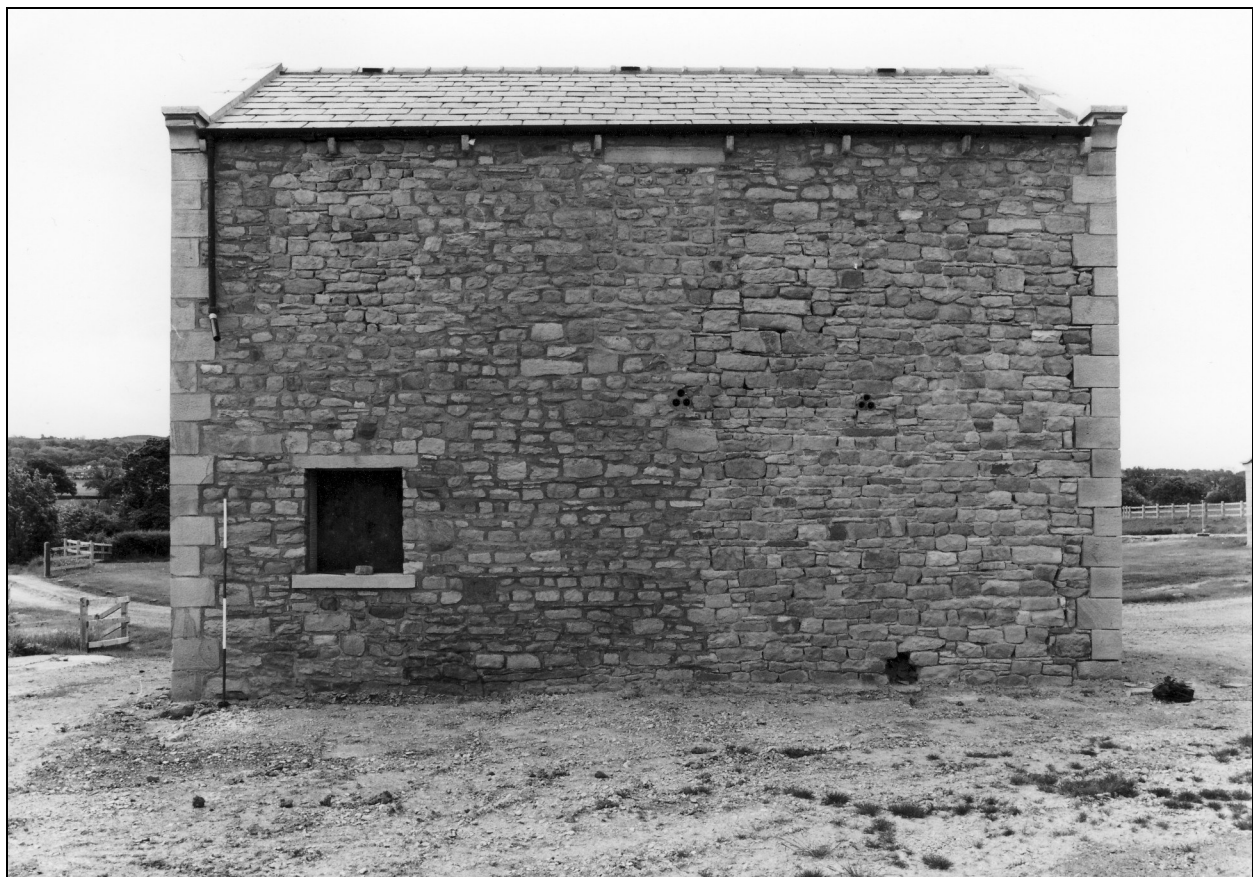


Photo 11: Rear, north elevation





Photo 13: Interior, from the west

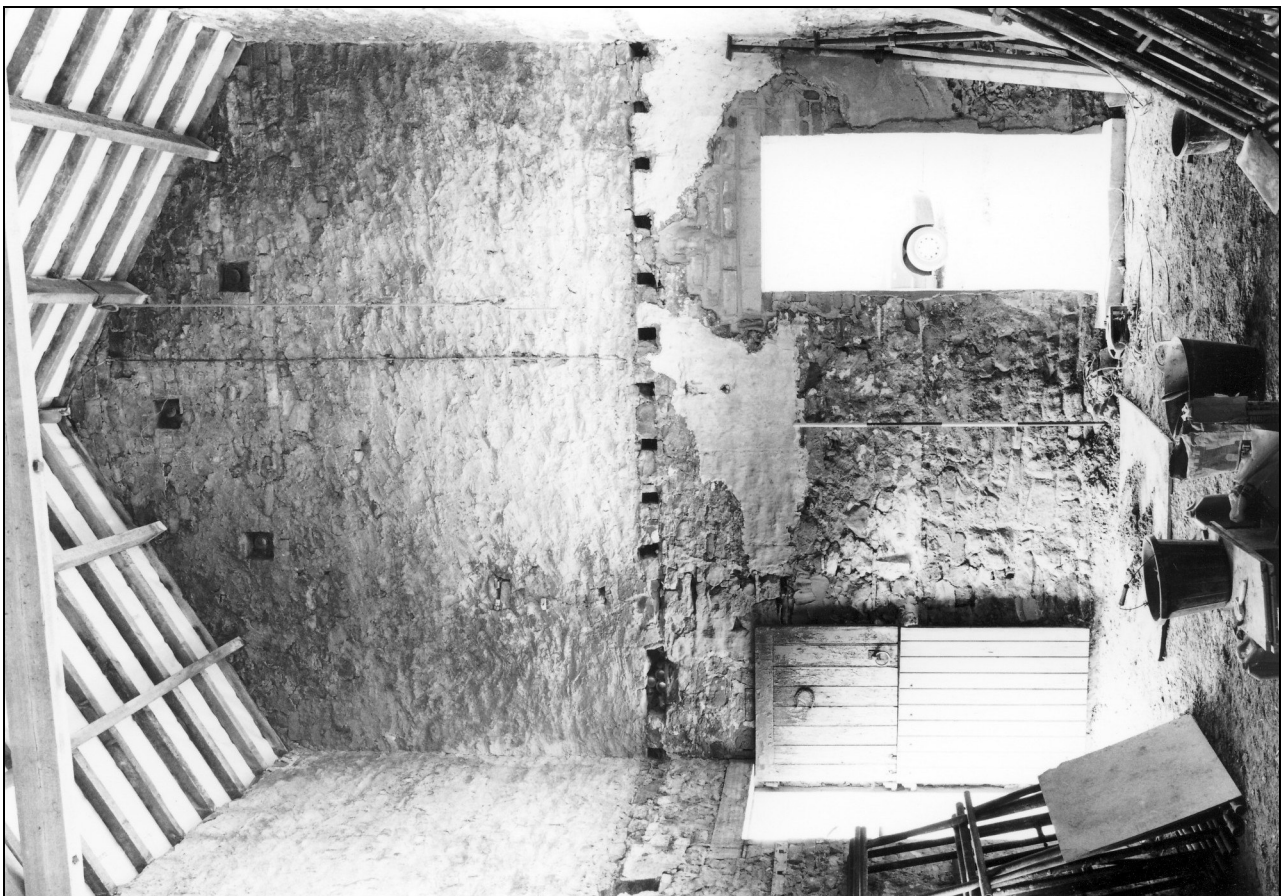


Photo 12: Interior, from the east



Photo 14: East roof truss, from the west