

Photo 1: East elevation of the barn



Photo 3: Detail of inserted windows to south shippon, in east elevation



Photo 4: Detail of doorway and window to north shippon, in east elevation



Photo 7: The barn from the south-east



Photo 9: Doorways to shippon, in south gable (east part)



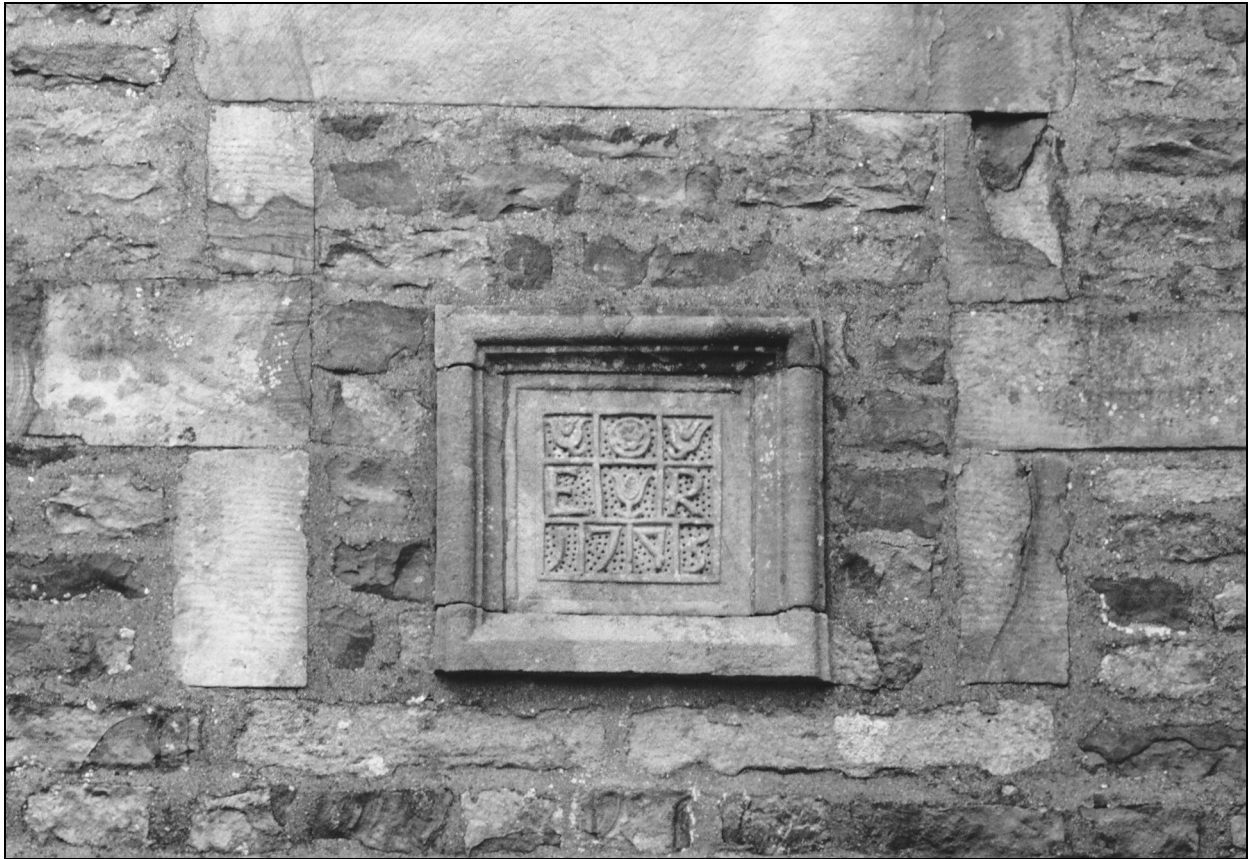


Photo 11: Detail of datestone in south gable



Photo 12: The barn from the north-west





Photo 13: The barn from the south-west

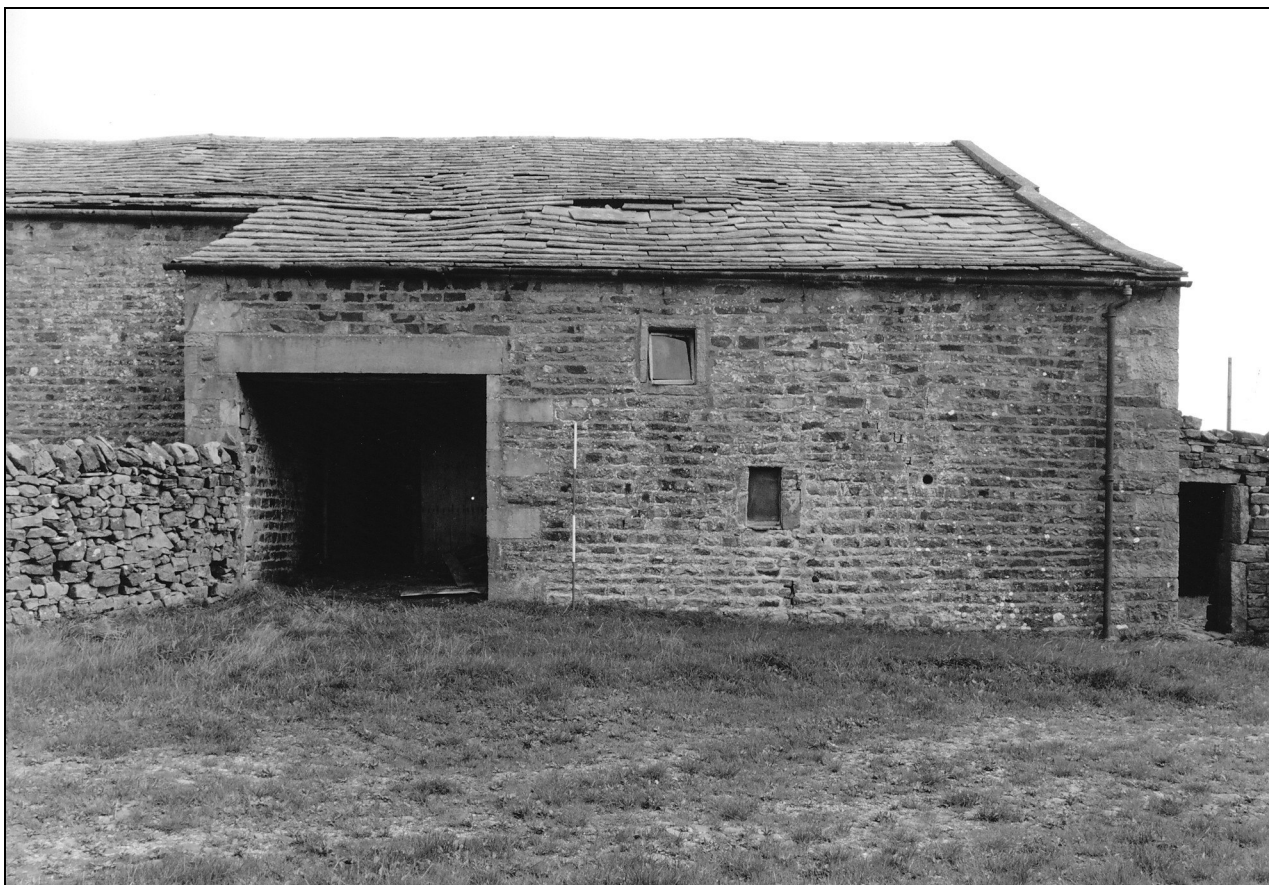


Photo 14: South end of west elevation



Photo 18: North gable of barn



Photo 20: Interior of barn: east porch and threshing floor, from the west



Photo 23: Interior of barn: original doors in west side, from the east



Photo 27: Interior of barn, from the north-west





Photo 26: Interior of barn, showing threshing floor and timber-framed shippon with hay loft over, from the north-east



Photo 32: Detail of graffiti on north side of shippon ("R+H 1841"??)



Photo 34: Detail of graffiti on door removed from shippon





Photo 35: South shippon: view into feeding passage, from the south



Photo 36: South shippon: rear of stalls in east side, from the south





Photo 39: South shippon: rear of stalls in west side, from the south

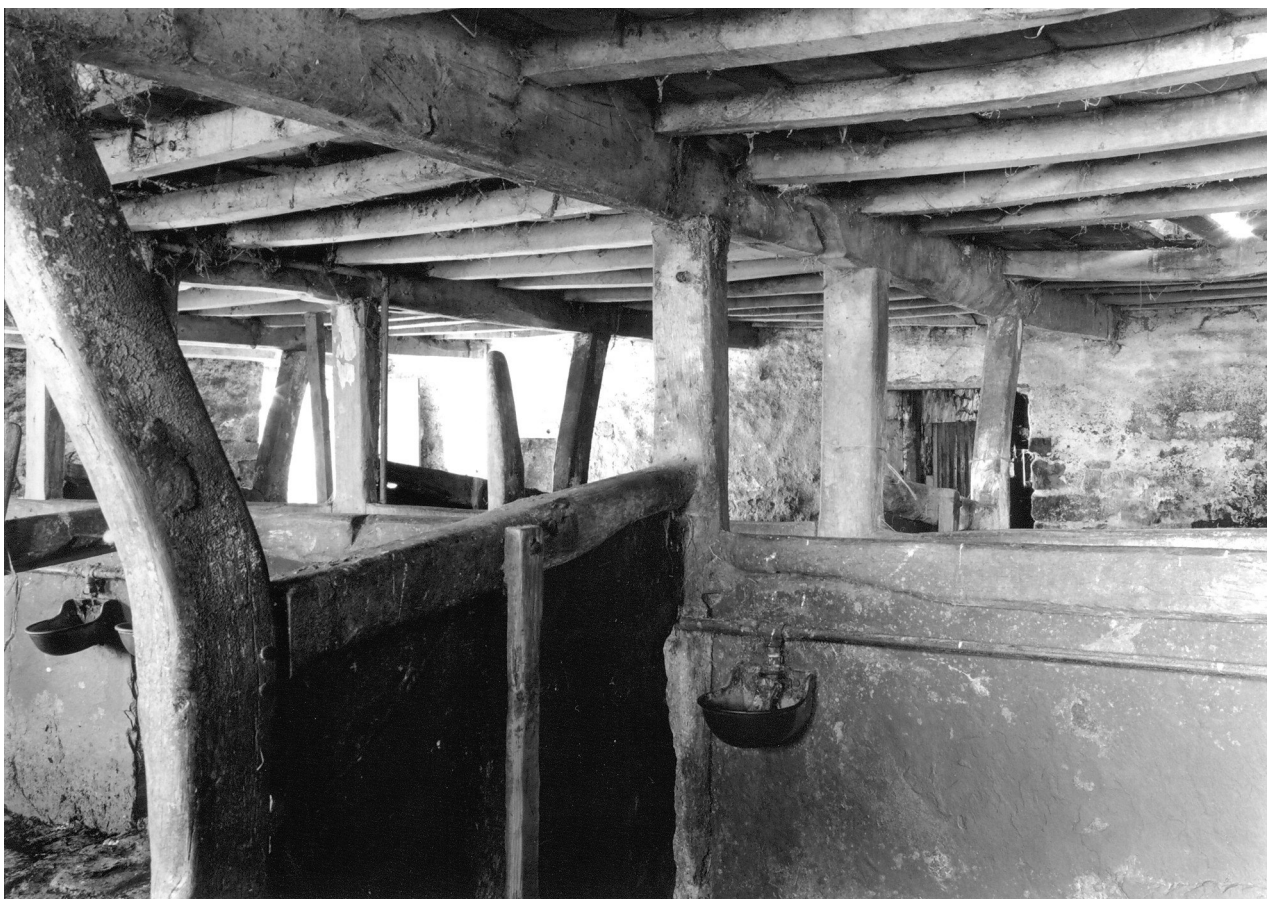


Photo 40: South shippon: view across stalls, from the north-east

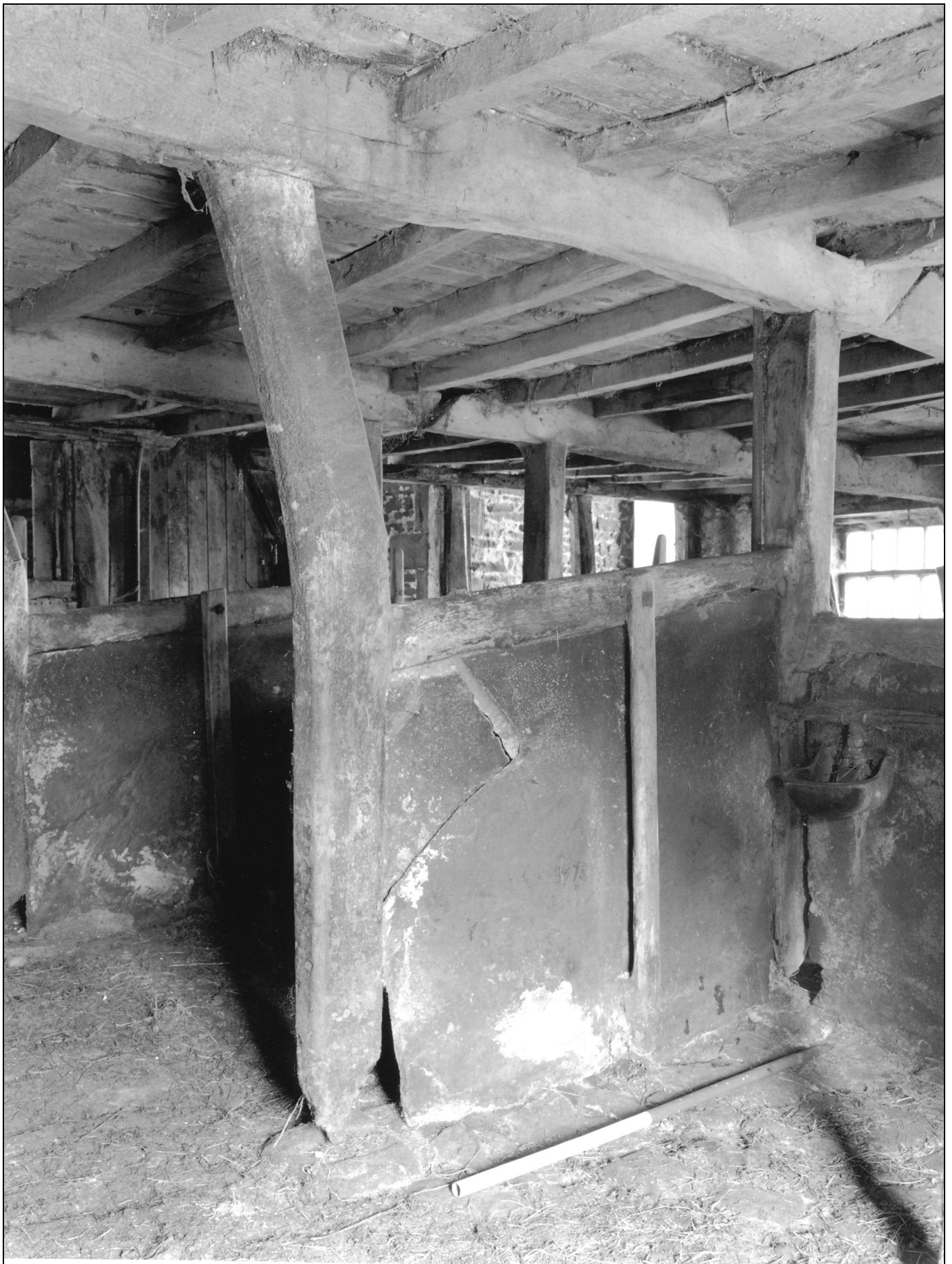


Photo 42: Detail of boskin or stall divider in west side of south shippon





Photo 43: Detail of stone kerb and cobbled standing in west side of south shippon

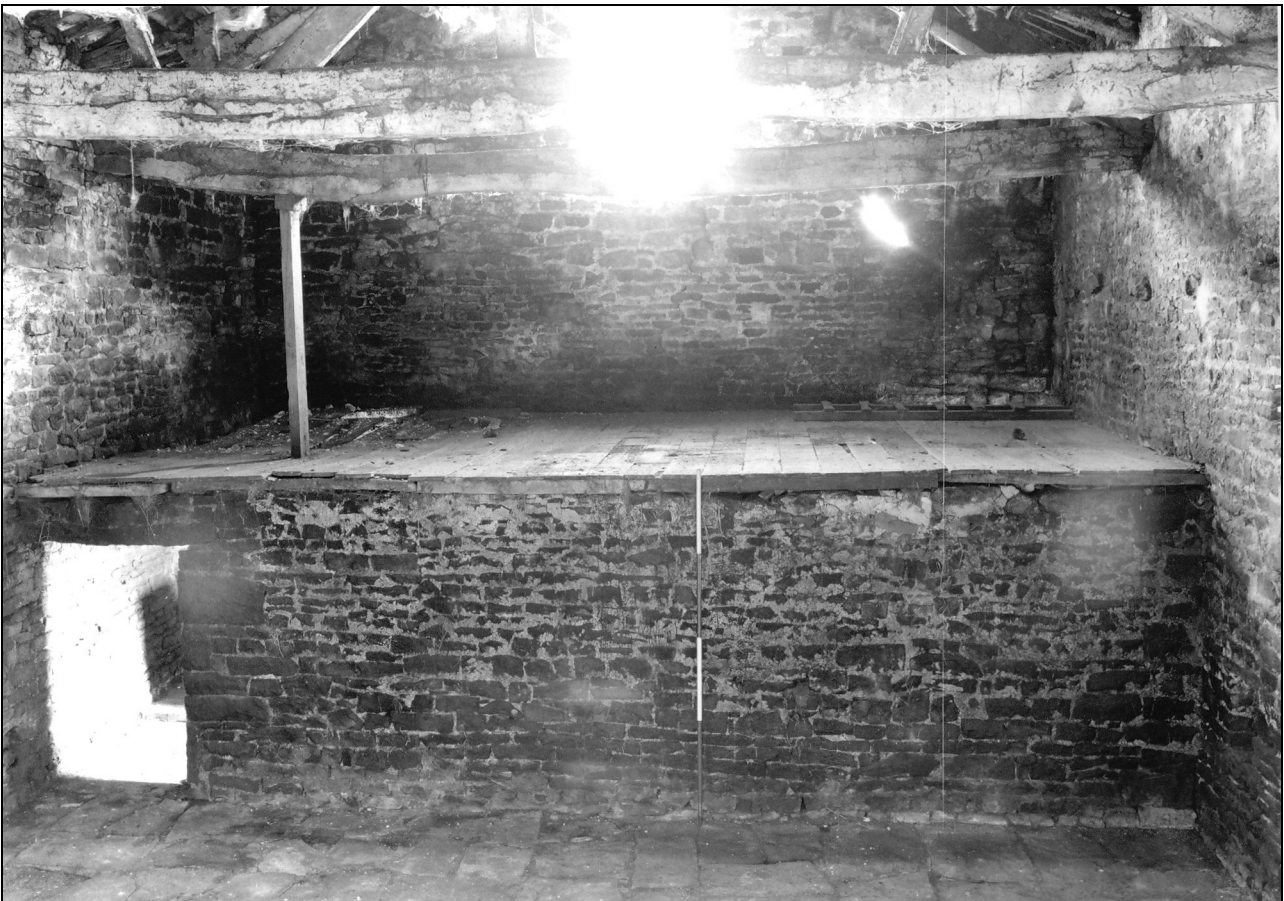


Photo 49: Interior of barn: hay loft over north shippon, from the south





Photo 50: Interior of north shippon, from the east



Photo 54: Roof truss in south end of barn, from the north-east