



Photo 1: General view of the site, from the north-west

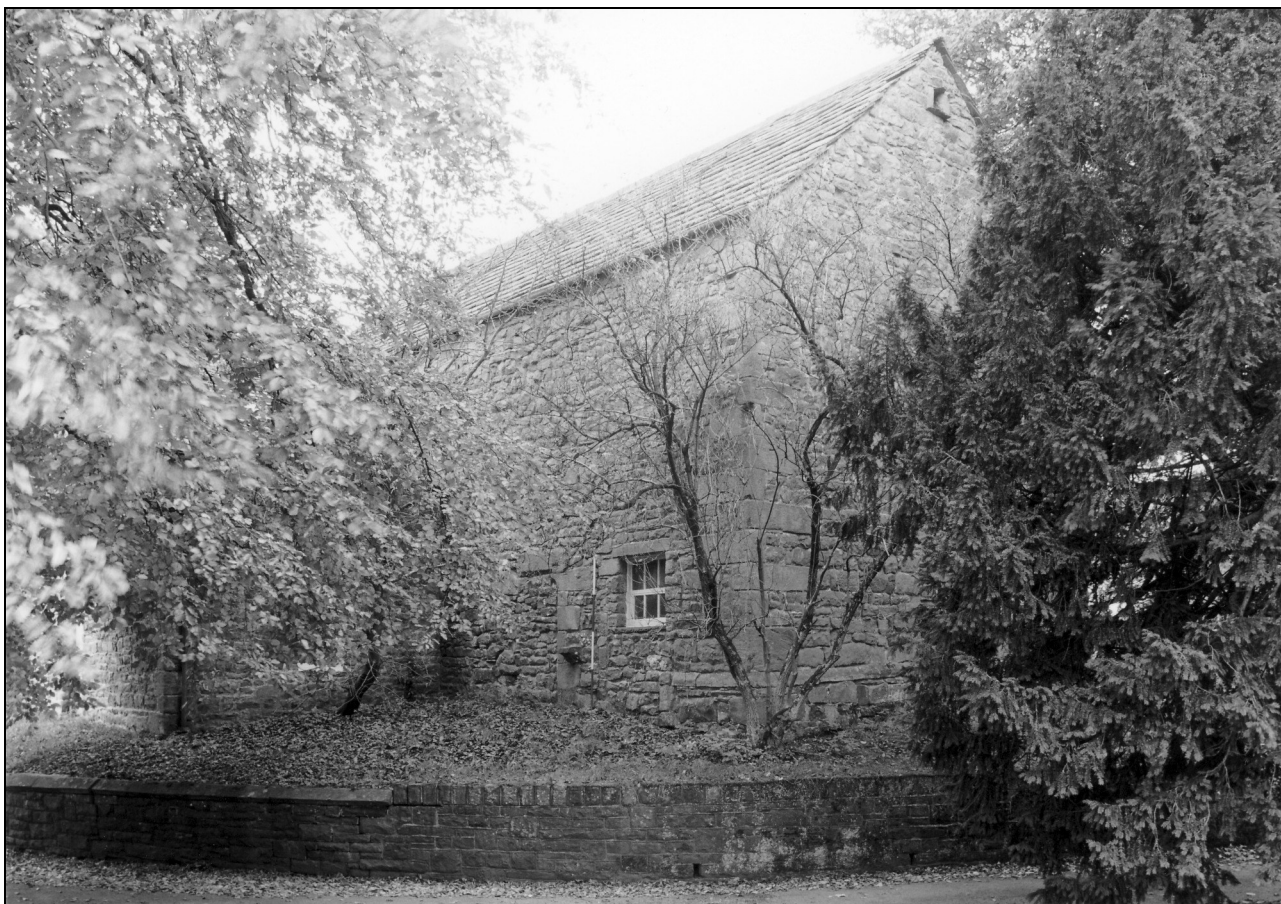


Photo 2: View of the building from the east

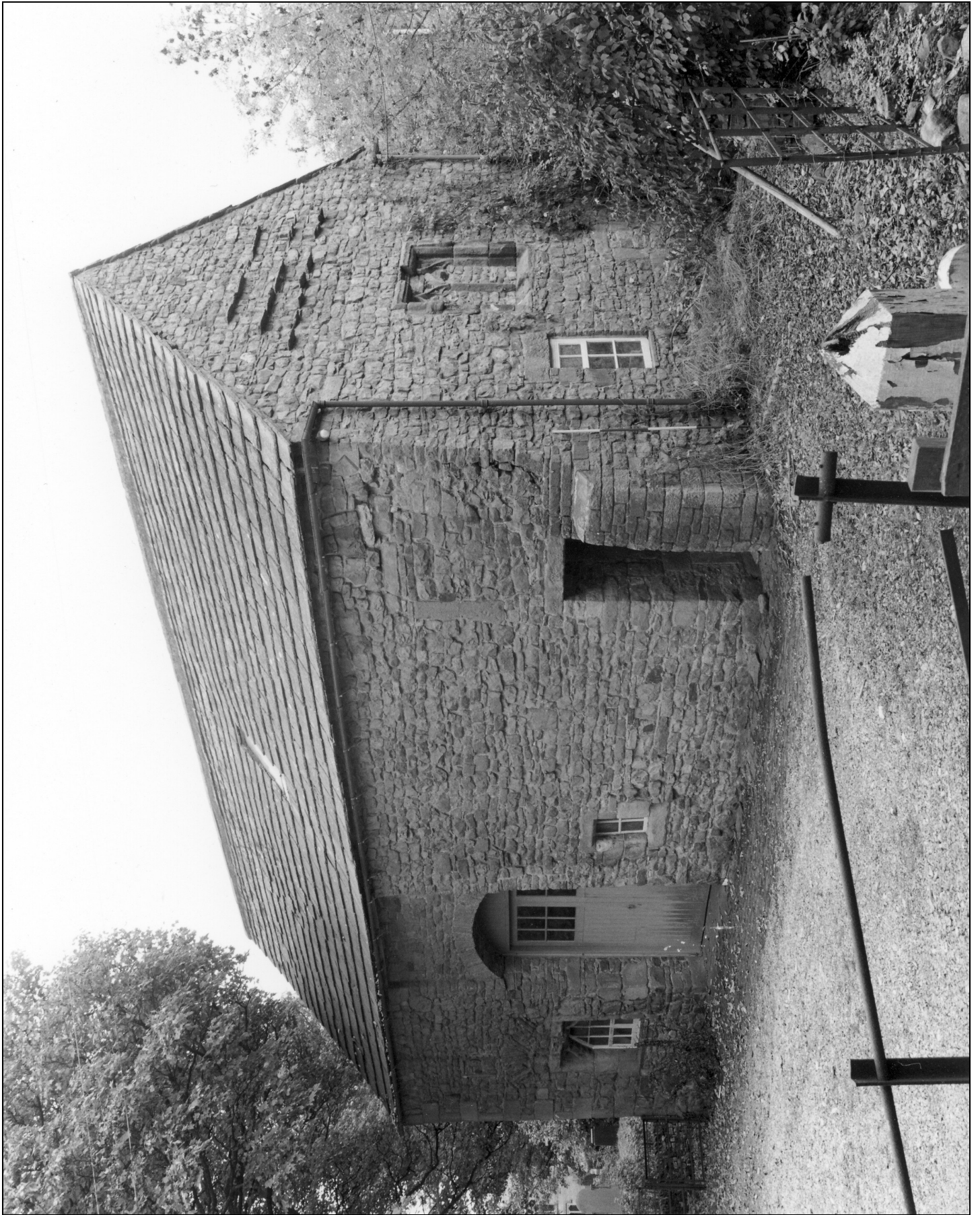


Photo 3: View of the building from the west





Photo 4: Roof trusses 1 and 2, from the north

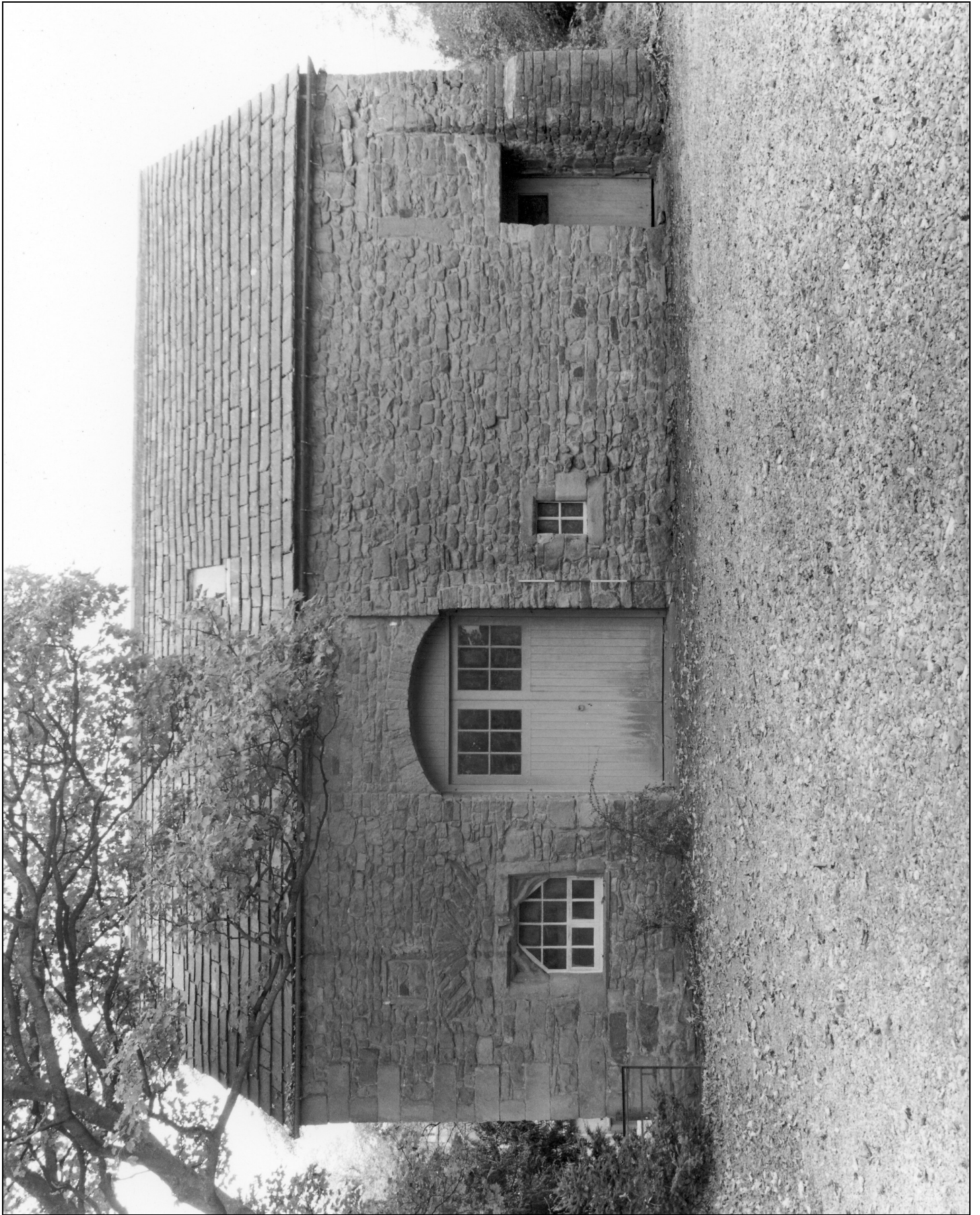


Photo 5: Front elevation, from the north-west





Photo 6: North-west elevation: right-hand end



Photo 8: Blocked first floor doorway in north-west elevation (interior)

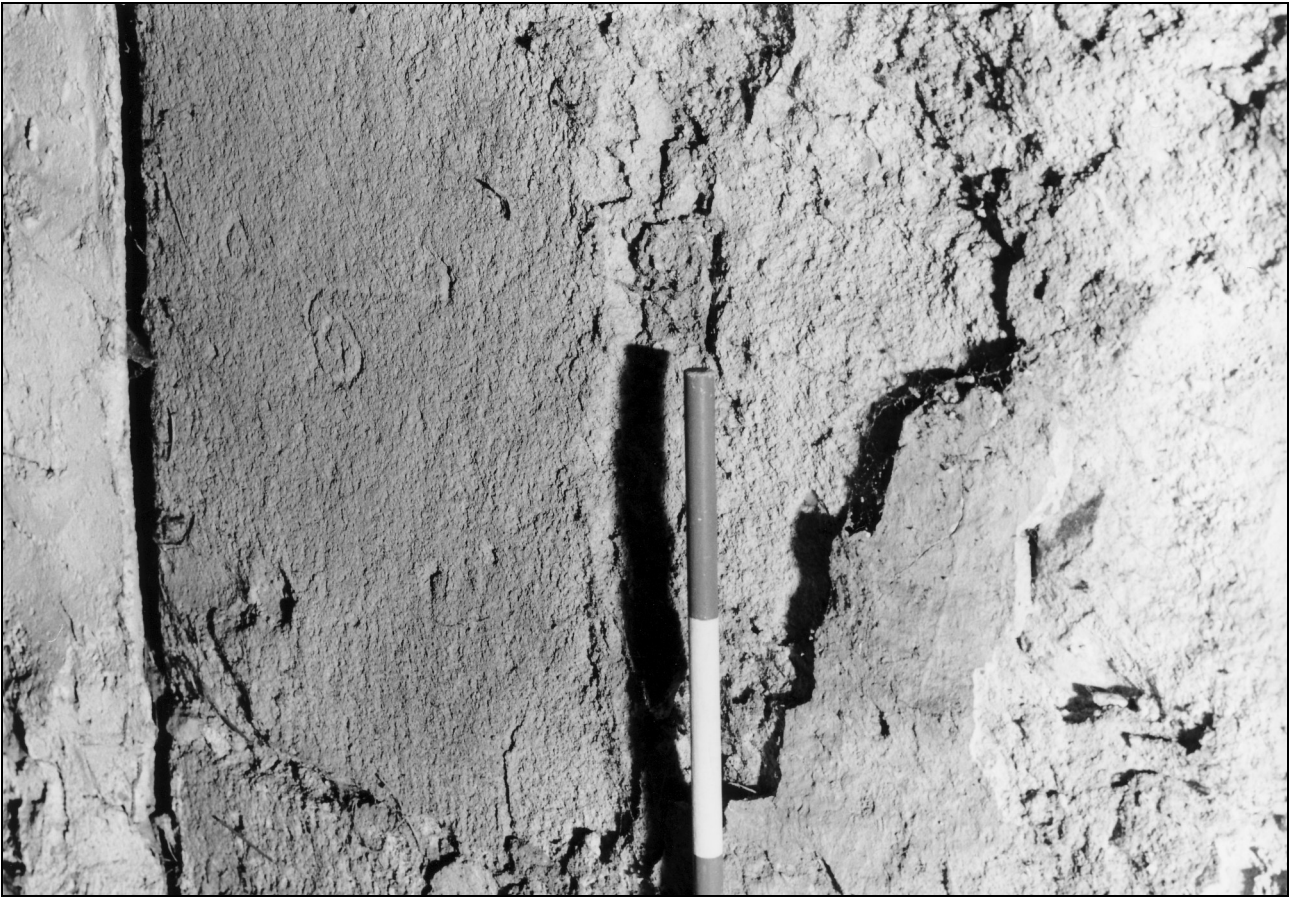


Photo 9: Detail of mason's mark on first floor doorway (D1) in north-west elevation (interior)



Photo 11: Detail of smaller window (W1) in north-west elevation





Photo 13: North-west elevation: left-hand end



Photo 14: Altered window opening (W1) and inserted wagon doorway (D3) in north-west side of barn (interior)



Photo 15: Detail of medieval two-light window (W2) in north-west elevation



Photo 18: Masonry joint, and doorway (D7) to 18th/19th century south-east wing, in south-west elevation





Photo 20: South-west elevation: blocked two-light window (W3) at first floor level, from the south



Photo 21: South-west elevation: blocked two-light window (W3) at first floor level



Photo 22: Detail of left-hand carved head on south-west window (W3)



Photo 23: Detail of right-hand carved head on south-west window (W3)





Photo 25: South-west elevation: altered window (W4) and blocked opening (W5), at ground floor level



Photo 27: Interior of stable: blocked opening (W5) and recess in south-west side, and harness pegs above



Photo 28: View of the building from the north-east



Photo 29: North-east gable





Photo 30: Detail of lower part of north-east gable, showing window (W6), and plinth



Photo 32: Jamb of first floor opening (W7) at north corner of barn (interior)



Photo 33: Detail of east corner, from the south-east, showing plinth and altered opening (W6)



Photo 34: Altered opening (W6) in south-east elevation (interior)





Photo 36: Detail of blocked doorway (D4) in south-east elevation



Photo 37: Quoins of blocked opening (D5) in south-east elevation, now inside later wing