

Photo 27: Mewstead, from the south-west (note possible blocked doorway at left)



Photo 30: Shippon in west end of barn, from the east



Photo 32: Interior of shippon, from the south (refitted in 20th century)



Photo 33: Inserted first floor opening, and earlier owl hole, between lofts in stable and barn, from the west



Photo 35: Central roof truss, from the east



Photo 37: East roof truss, from the west



Photo 39: South end of west roof truss, from the north-east



Photo 41: North end of west roof truss, with corbel, from the south-east



Photo 42: Redundant corbel in north side of mewstead



Photo 43: South side of stable

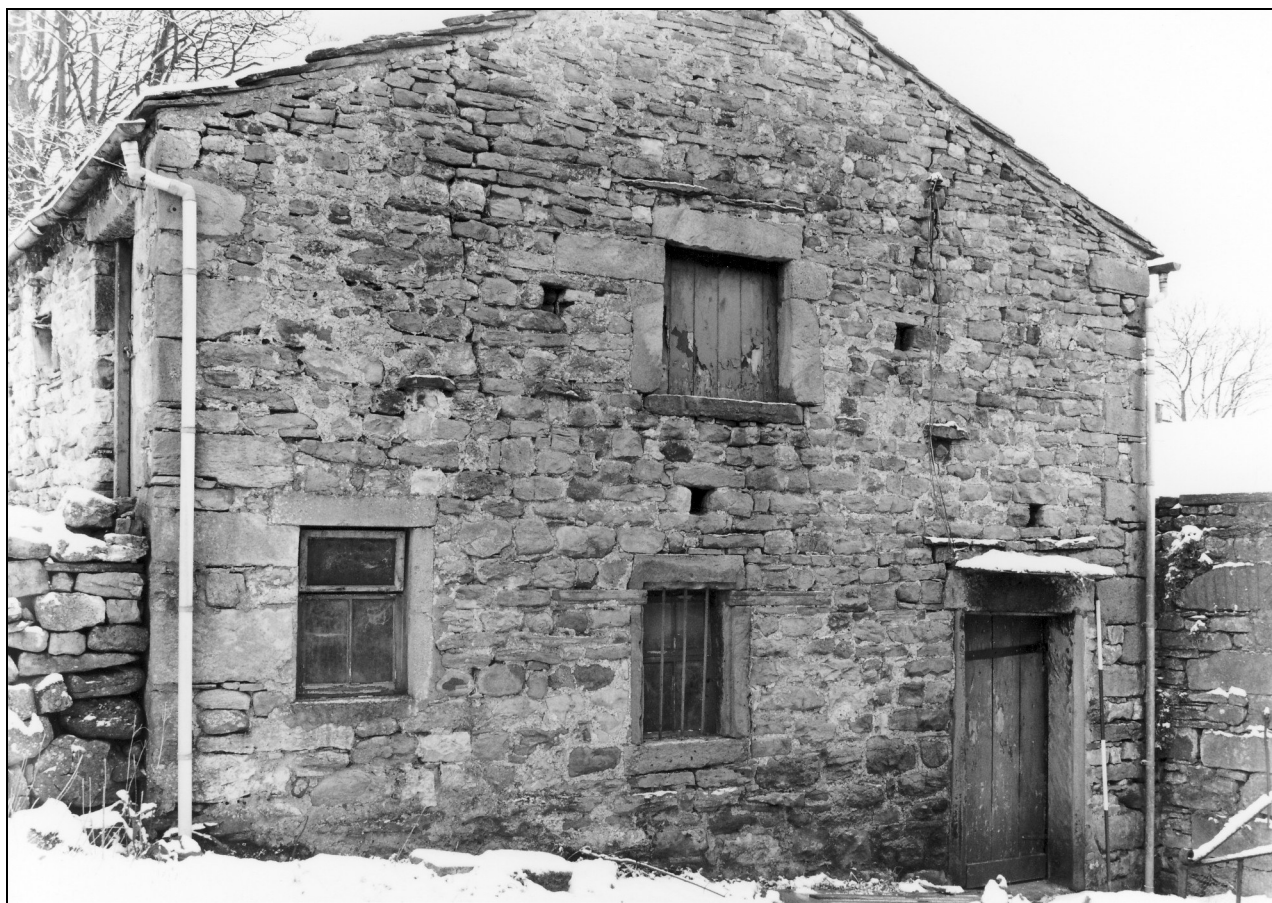


Photo 44: The west gable



Photo 45: The barn, from the north-west

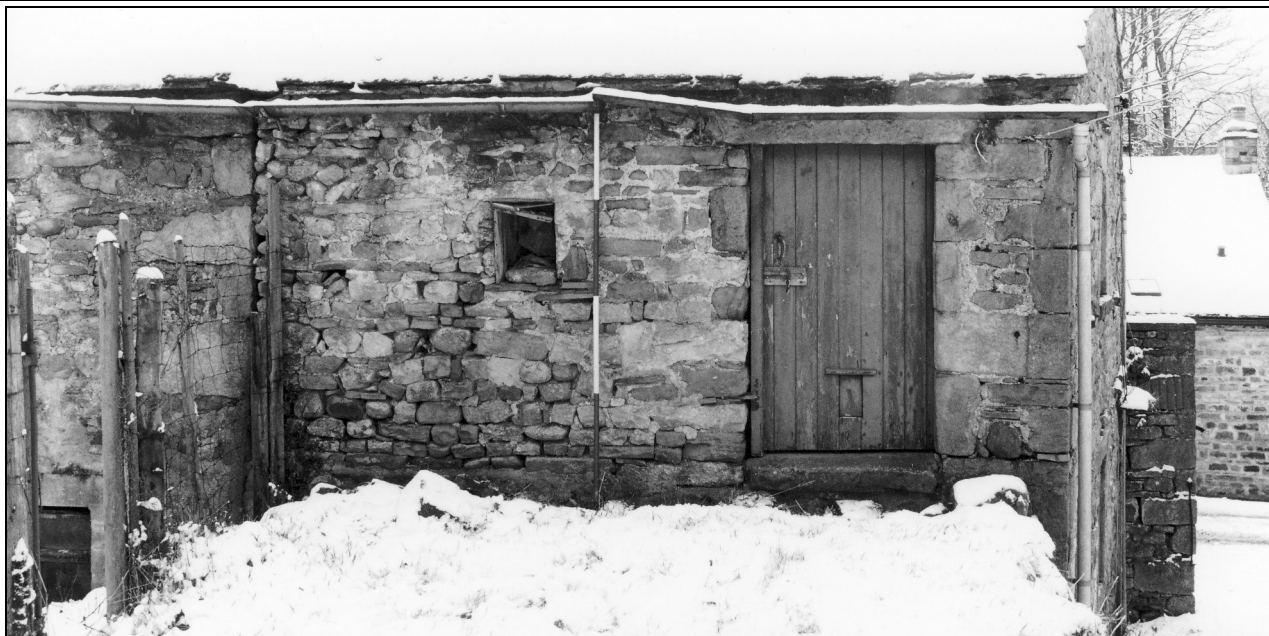


Photo 46: Rear elevation of stable feed loft

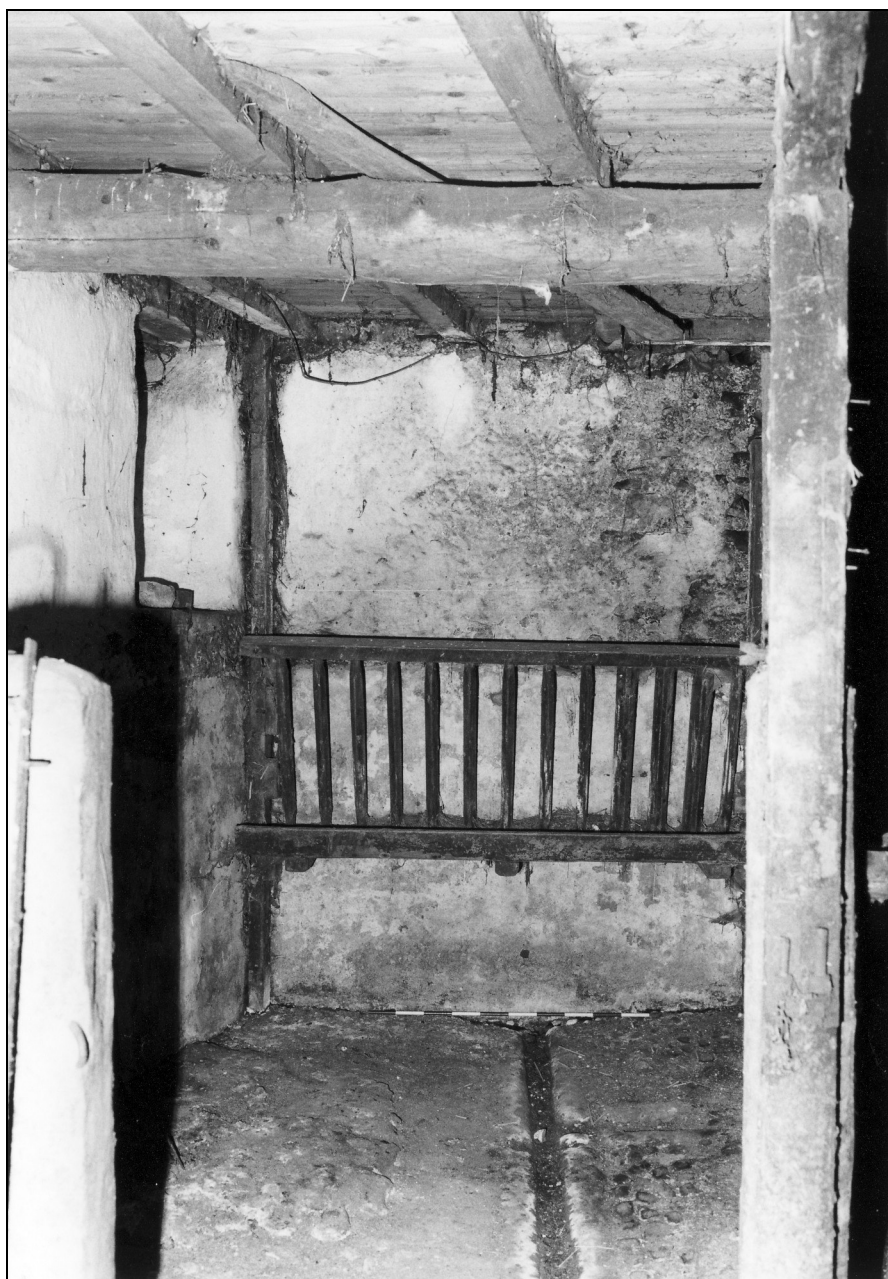


Photo 47: North-west stall in stable, from the south



Photo 51: Cobbled floor and stone kerb in stable, from the east



Photo 53: Hay loft over stable, from the south-east



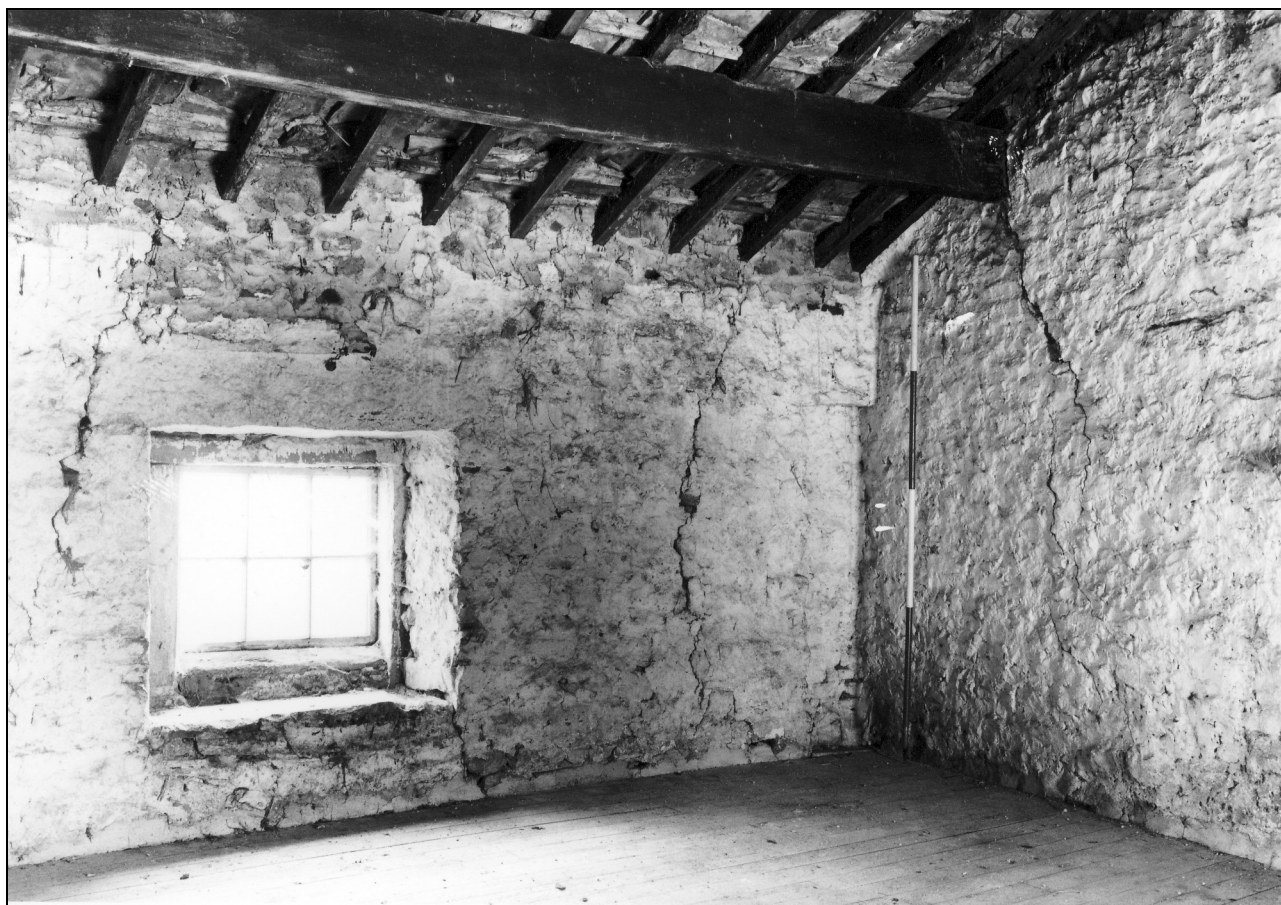


Photo 54: Hay loft over stable, from the north-east



Photo 56: Detail of millstone fragment in east gate pier