

Photo 1: The front elevation, from the south-east, after removal of render



Photo 2: Front elevation of the barn, from the south, after removal of render



Photo 3: Barn and added shippon, from the north



Photo 4: Rear of barn and added shippon, from the north-west, after removal of render



Photo 6: Front elevation of the barn, from the south-west, after removal of render, showing blocked doorway



Photo 8: Front elevation of the barn and adjoining earlier part of house, from the south-east, after removal of render



Photo 10: East gable within barn, showing breathers



Photo 13: Central truss in barn, from the west



Photo 14: West truss in barn, from the east



Photo 15: Front elevation of the house, from the south, after removal of render



Photo 16: The buildings, from the south-east, before removal of render



Photo 17: Straight joint in front elevation of house, after removal of render



Photo 20: Moulded stone fireplace in west part of house, from the south-west (room 1)



Photo 21: Bread oven within side of fireplace, room 1



Photo 26: Front elevation of the range, from the south-east, after removal of render



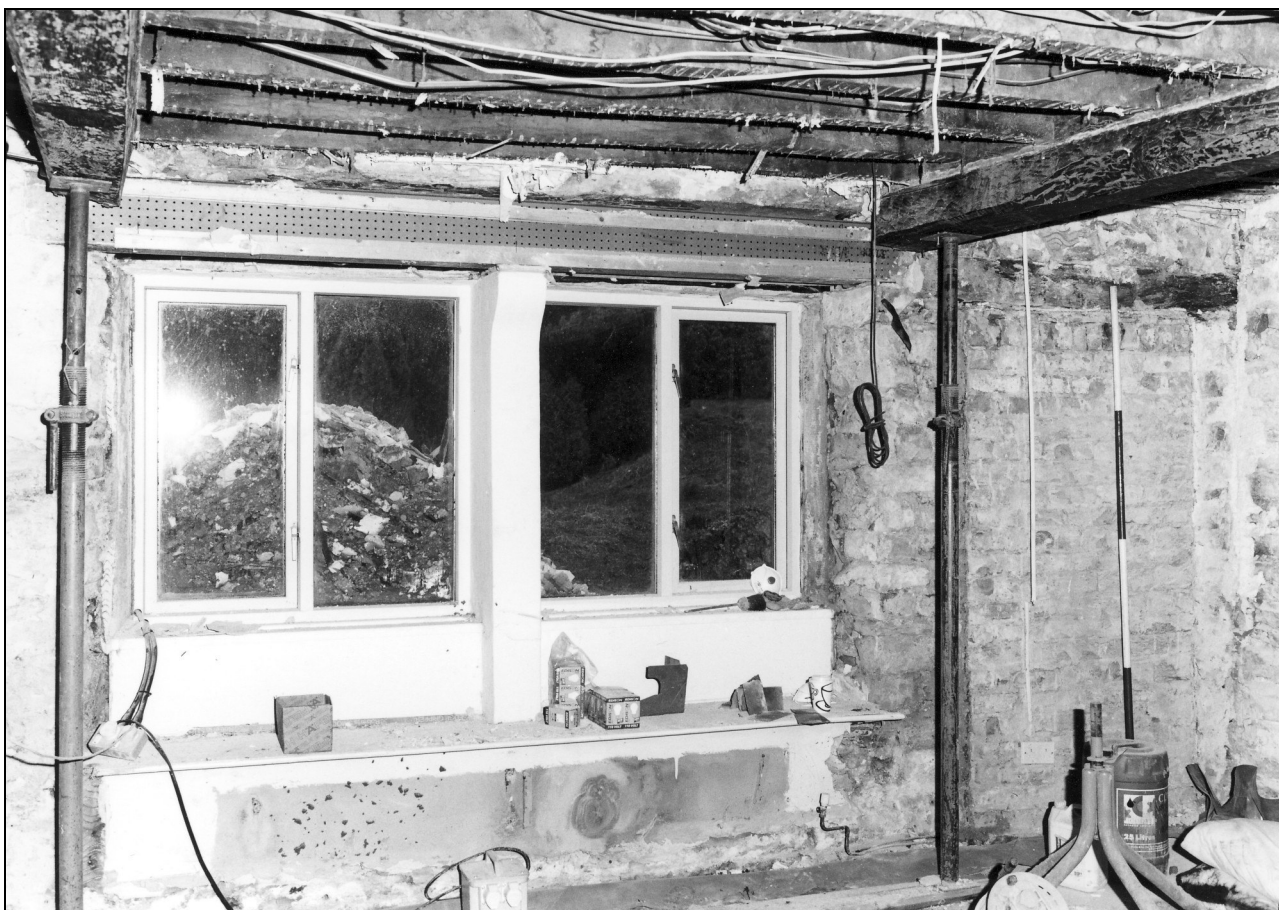


Photo 27: Front window with king mullion in ground floor room 3, east end of house



Photo 30: Rear elevation of house etc, from the north-west, before removal of render



Photo 31: Rear elevation of 19th century rear part of house, after removal of render



Photo 33: Ground floor fireplace in rear part of house (room 4)



Photo 34: First floor room 9, from the west



Photo 35: Added shippon at rear, from the north-west, after removal of render etc