



Photo 1: General view, from the south-west



Photo 2: Noyna Bottom, from the south-east



Photo 3: Front elevation of the house (extended at the left)



Photo 4: Front elevation of the house and barn, from the south-east

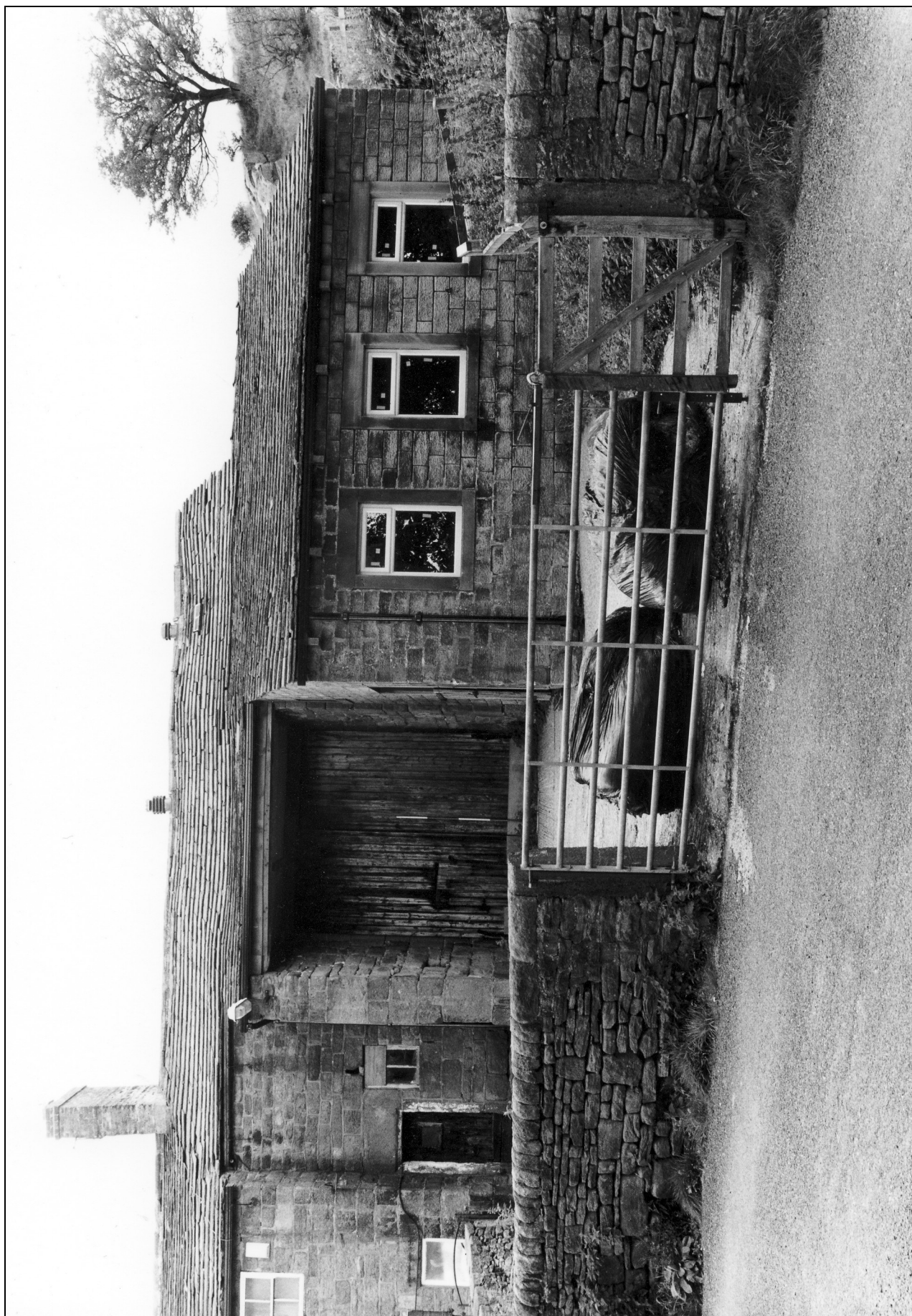


Photo 5: The barn: front elevation



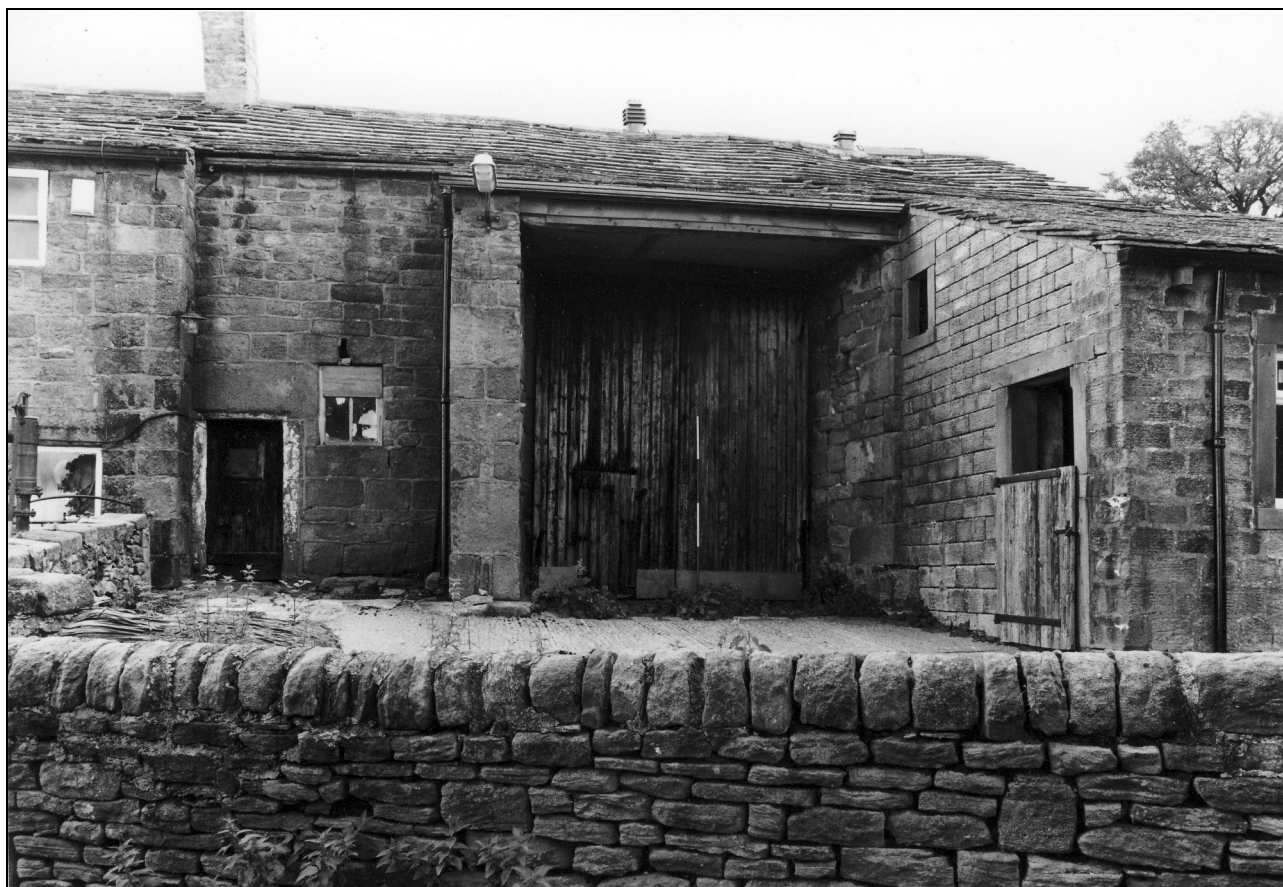


Photo 6: Front elevation of the barn, with later stable to right



Photo 7: Front elevation of the barn, and later stable, from the south-west



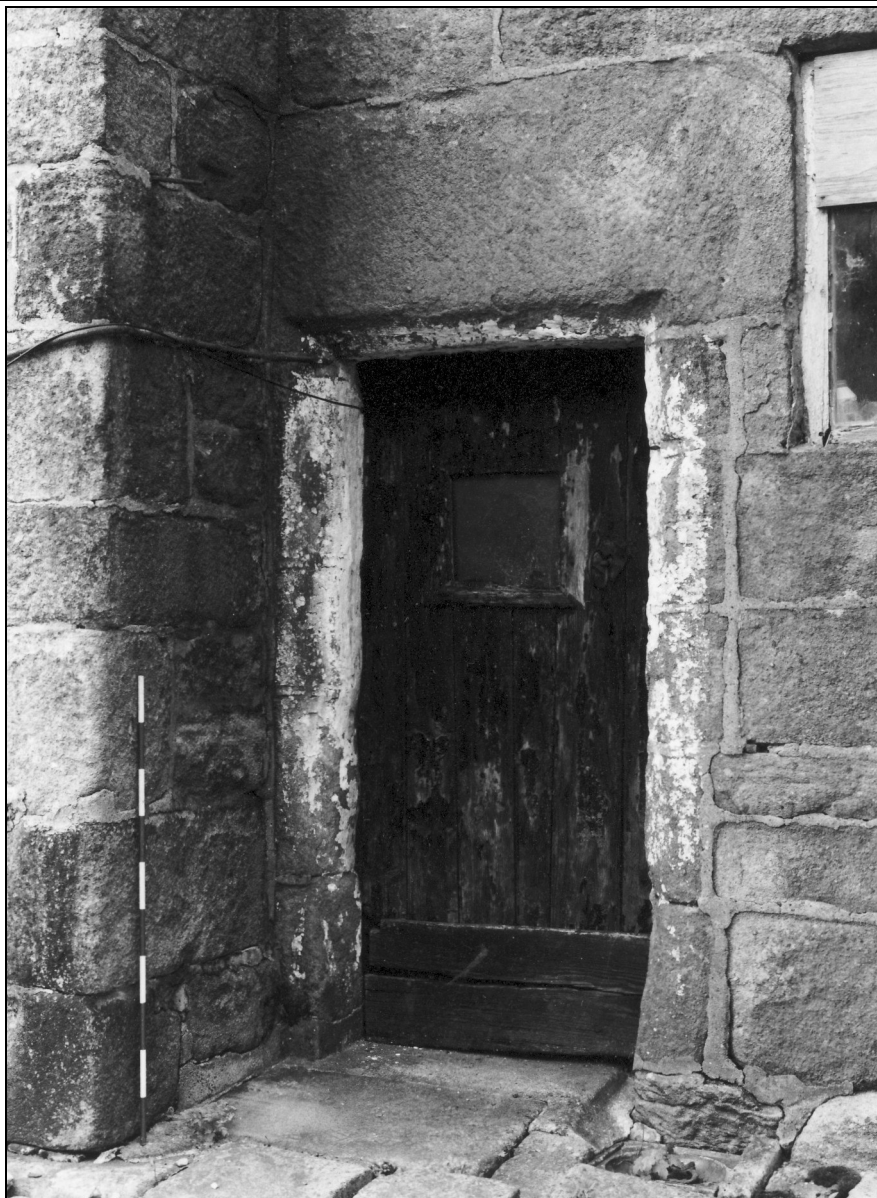


Photo 9: Chamfered doorway with worn stops, to shippon in west end of barn



Photo 11: General view of the site, from the north-east



Photo 13: Detail of chamfer and stop to doorway at north end of east gable



Photo 16: General view of the site, from the north

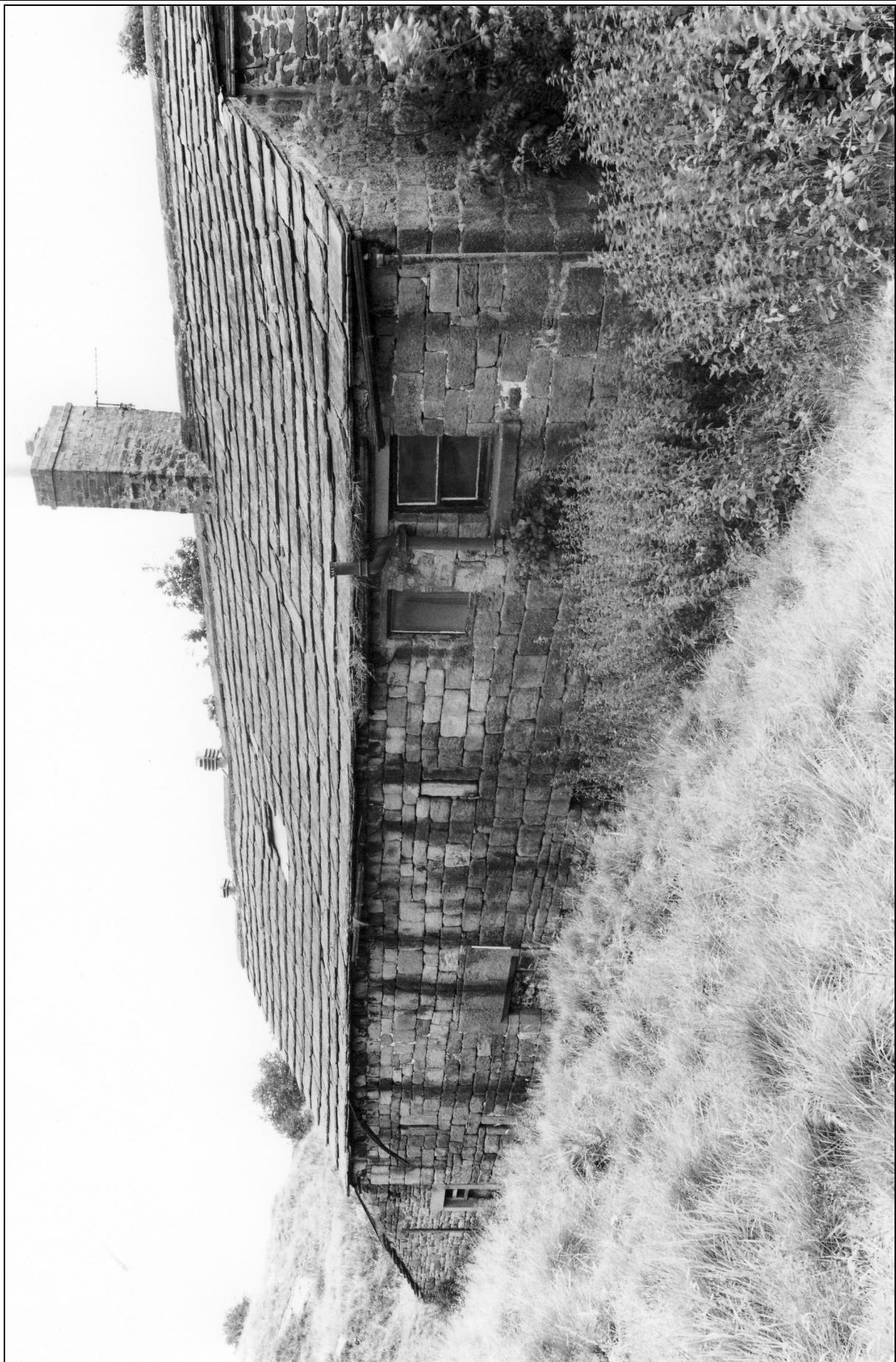


Photo 14: Rear elevation of the barn and house, from the north-west





Photo 20: Detail of breathers in rear elevation of the barn



Photo 18: Detail of former doorway in rear elevation of the barn

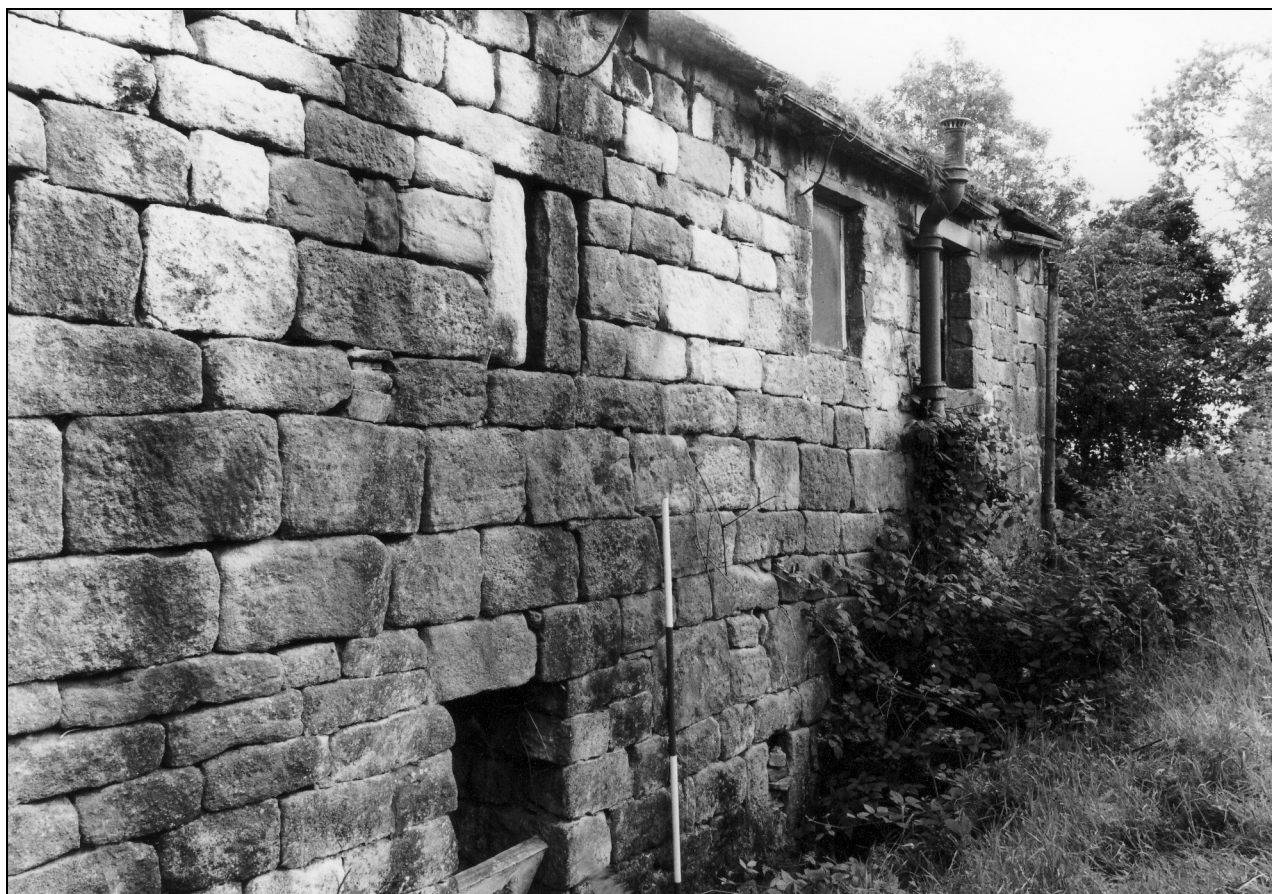


Photo 21: Detail of openings to house at west end of rear elevation



Photo 22: West end of the barn interior, showing rubble wall to house





Photo 23: Interior of shippon in west end of barn, from the north



Photo 26: Detail of pitched stones to stalls in shippon