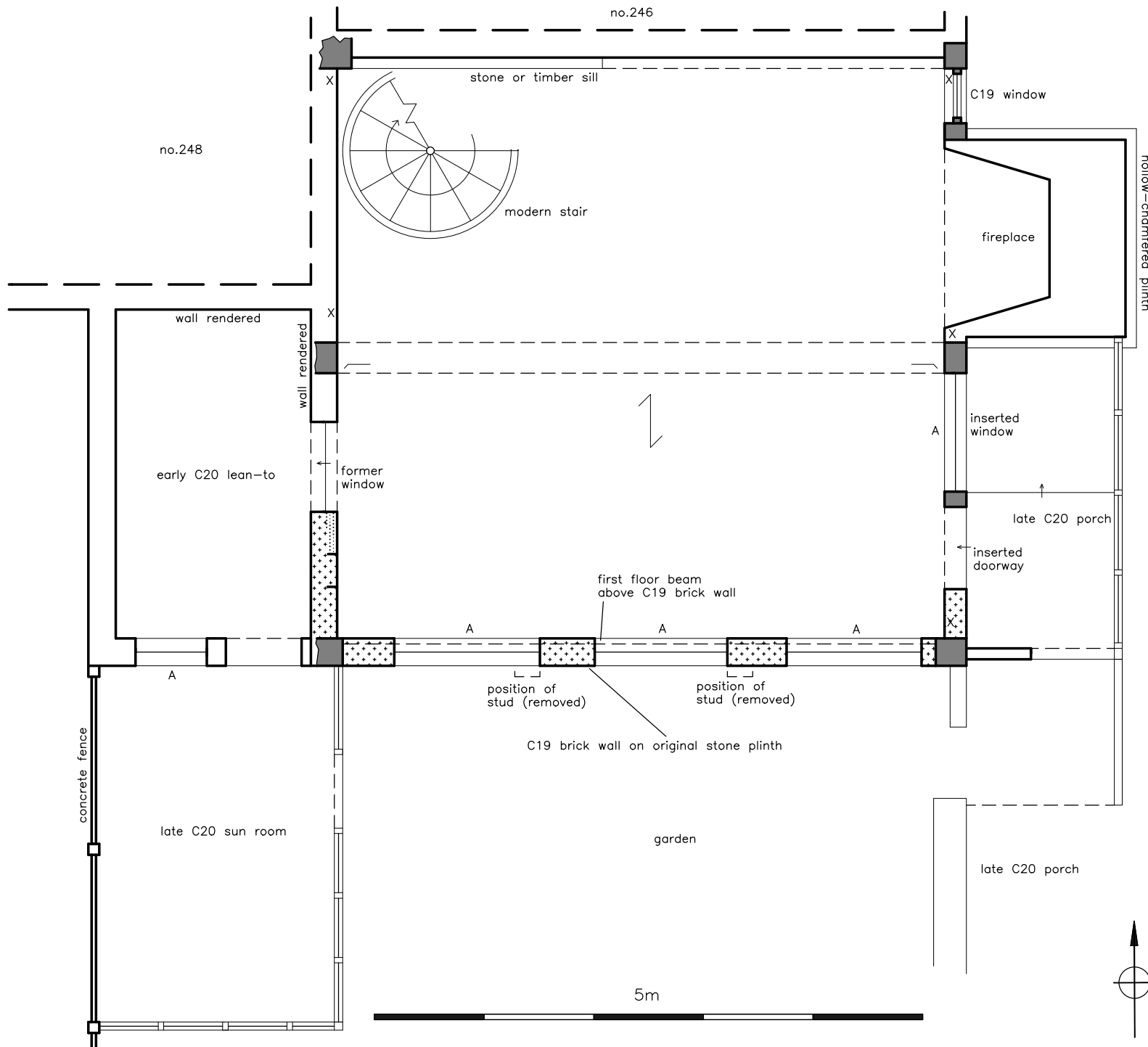


DRAWING BASED ON ORIGINAL BY JEFF STOTT



KEY:

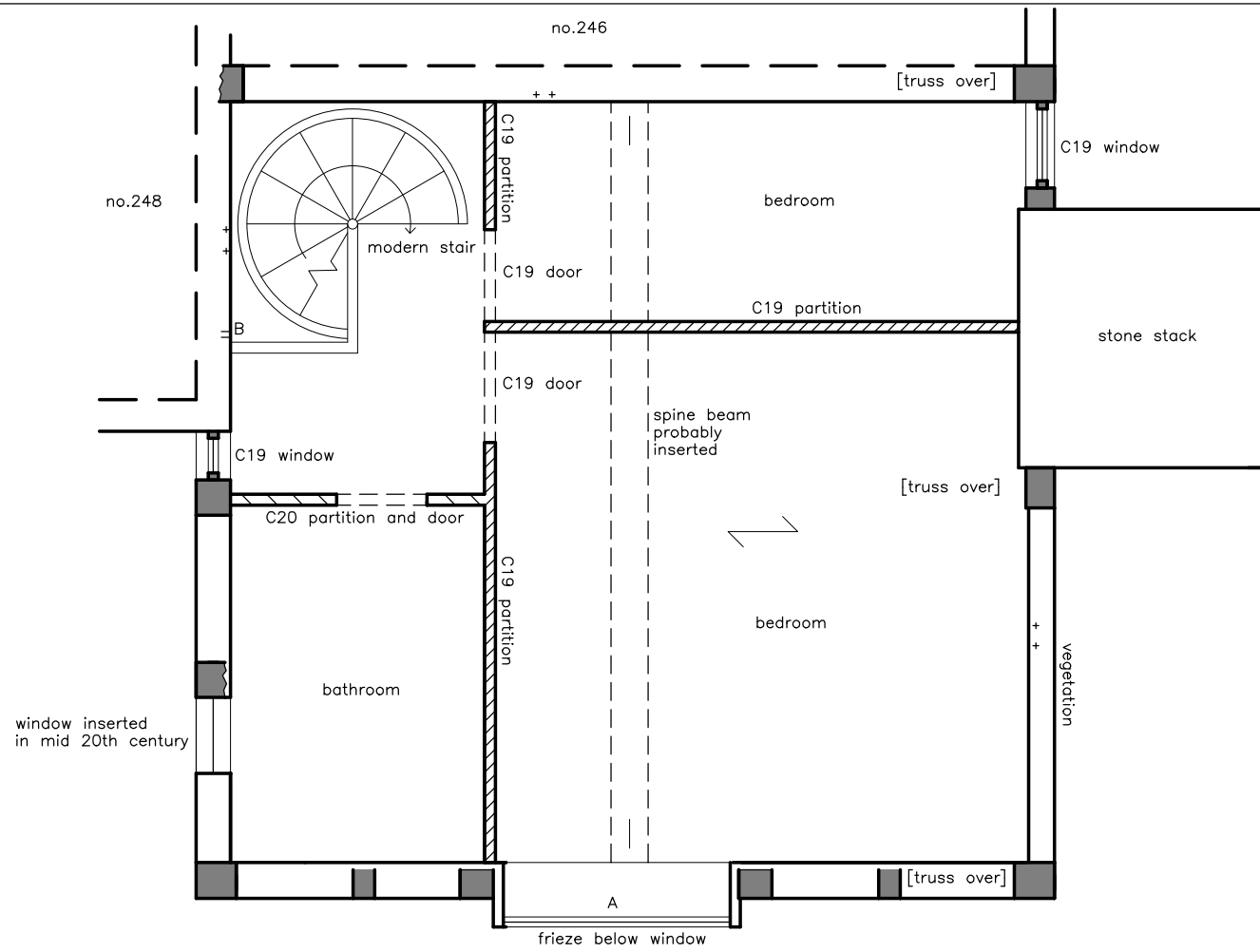
- X remains of sill beam visible in wall
- ↑ step up
- post or stud
- A late C20 window in earlier opening
- ↔ direction of joists (over)
- chamfer and stop
- ▒ blocking ▒ visible brickwork

247 KEMPNOUGH HALL ROAD
 WORSLEY, SALFORD, GREATER
 MANCHESTER (NGR: SD 74640152):
 HISTORIC BUILDING ASSESSMENT
 AND RECORDING

FIGURE 22:
 GROUND FLOOR PLAN

SCALE: 1:50
 DATE OF SURVEY: OCTOBER 2009

STEPHEN HAIGH
 Buildings Archaeologist



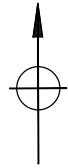
- KEY:
- X remains of sill beam visible in wall
 - ⊥ step up
 - post or stud
 - A late C20 window in earlier opening
 - + pegs/holes indicating stud
 - B small slot in wall plate
 - ↗ direction of joists (over)
 - chamfer


247 KEMPNOUGH HALL ROAD
 WORSLEY, SALFORD, GREATER
 MANCHESTER (NGR: SD 74640152):
 HISTORIC BUILDING ASSESSMENT
 AND RECORDING

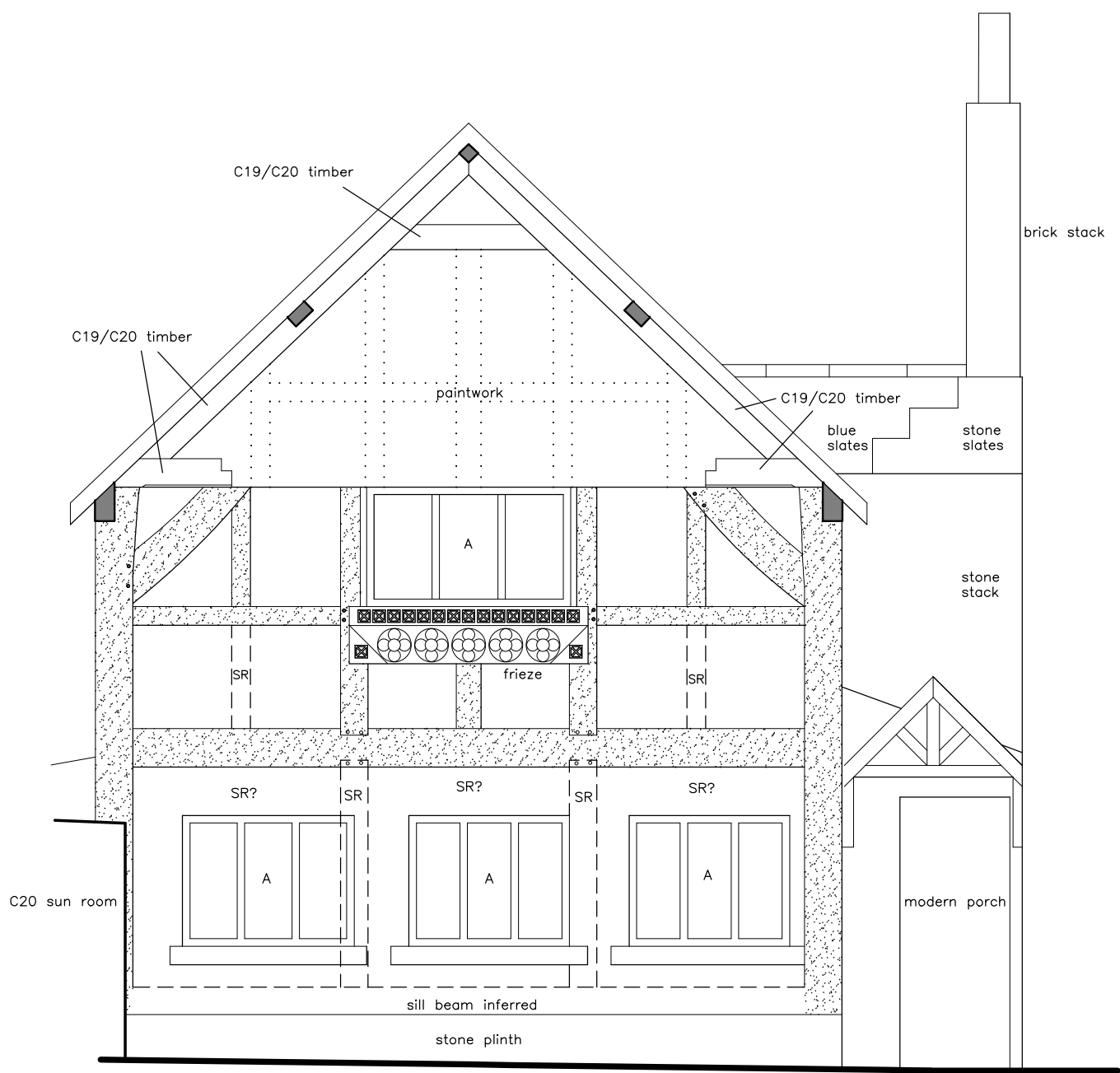
FIGURE 23:
 FIRST FLOOR PLAN

SCALE: 1:50
 DATE OF SURVEY: OCTOBER 2009

STEPHEN HAIGH
 Buildings Archaeologist



KEY:
 visible surviving timber framing
 SR stud removed
 A modern window in earlier opening

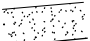


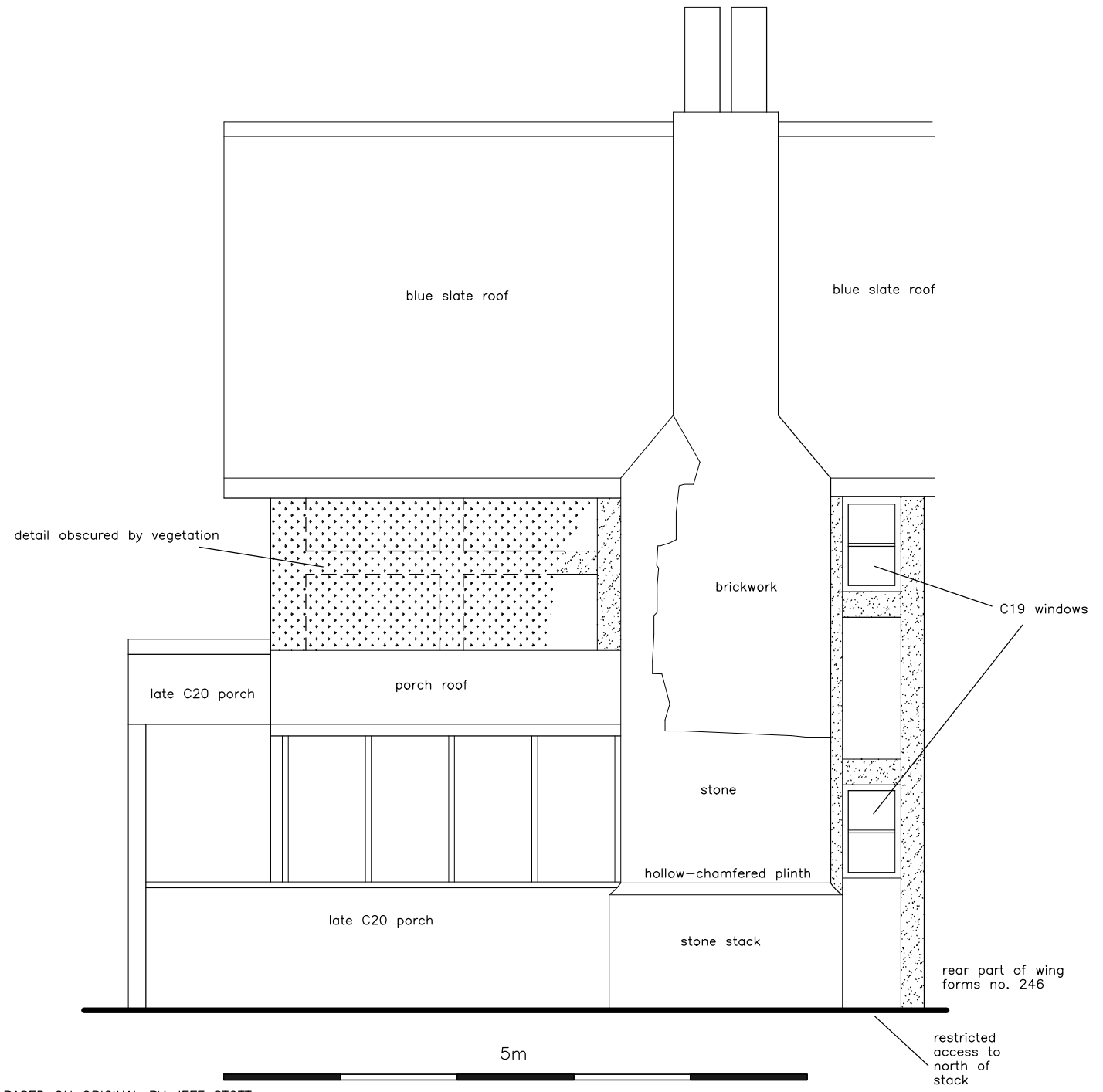
247 KEMPNOUGH HALL ROAD
 WORSLEY, SALFORD, GREATER
 MANCHESTER (NGR: SD 74640152):
 HISTORIC BUILDING ASSESSMENT
 AND RECORDING

FIGURE 24:
 SOUTH ELEVATION

SCALE: 1:50
 DATE OF SURVEY: OCTOBER 2009

STEPHEN HAIGH
 Buildings Archaeologist

KEY:
 visible surviving timber framing




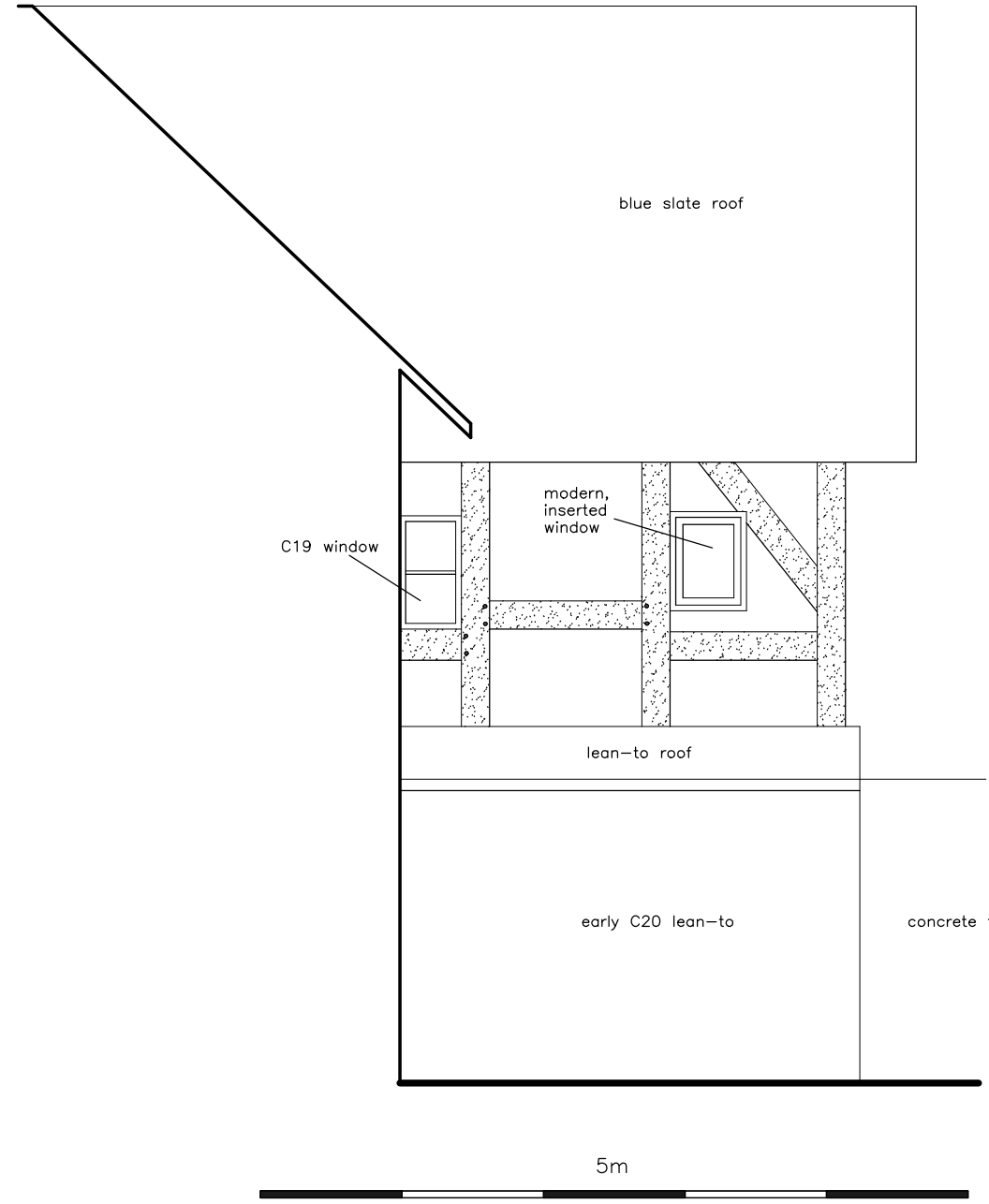
247 KEMPNOUGH HALL ROAD
 WORSLEY, SALFORD, GREATER
 MANCHESTER (NGR: SD 74640152):
 HISTORIC BUILDING ASSESSMENT
 AND RECORDING

FIGURE 25:
 EAST ELEVATION

SCALE: 1:50
 DATE OF SURVEY: OCTOBER 2009

STEPHEN HAIGH
 Buildings Archaeologist

KEY:
 visible surviving timber framing

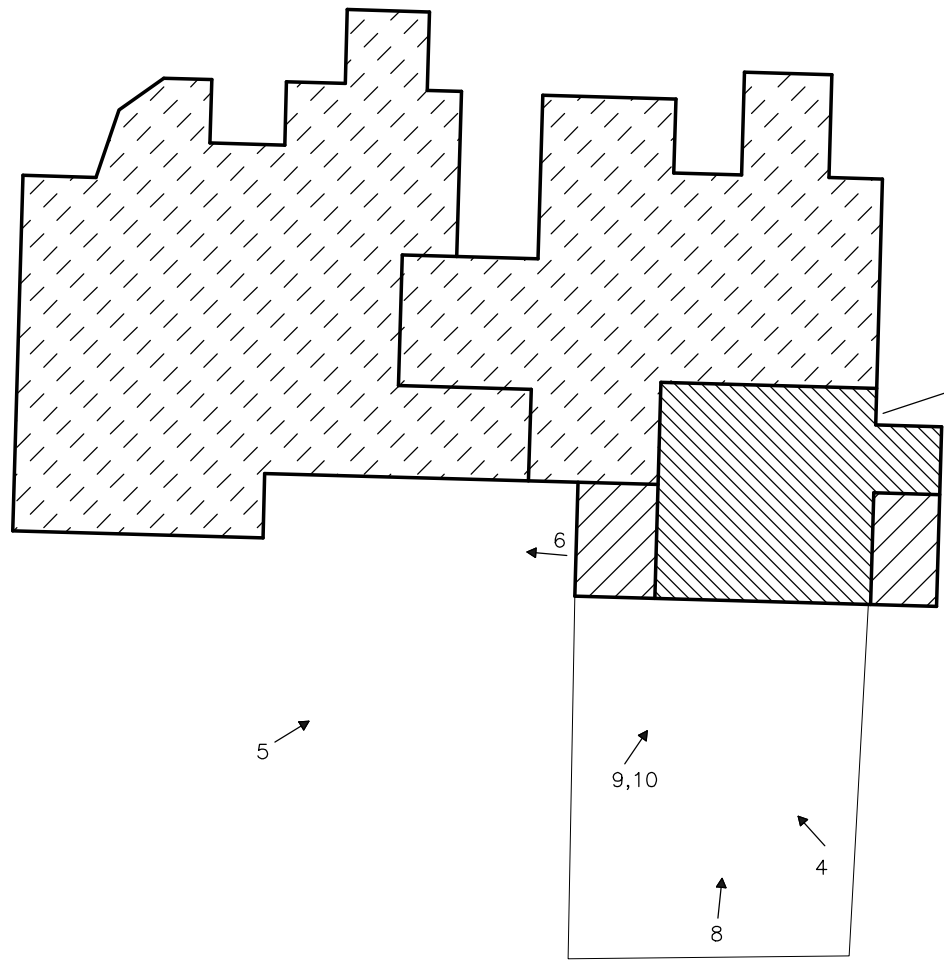


247 KEMPNOUGH HALL ROAD
WORSLEY, SALFORD, GREATER
MANCHESTER (NGR: SD 74640152):
HISTORIC BUILDING ASSESSMENT
AND RECORDING

FIGURE 26:
WEST ELEVATION

SCALE: 1:50
DATE OF SURVEY: OCTOBER 2009

STEPHEN HAIGH
Buildings Archaeologist



historic core of 247

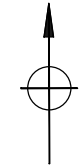
1: photograph direction and number

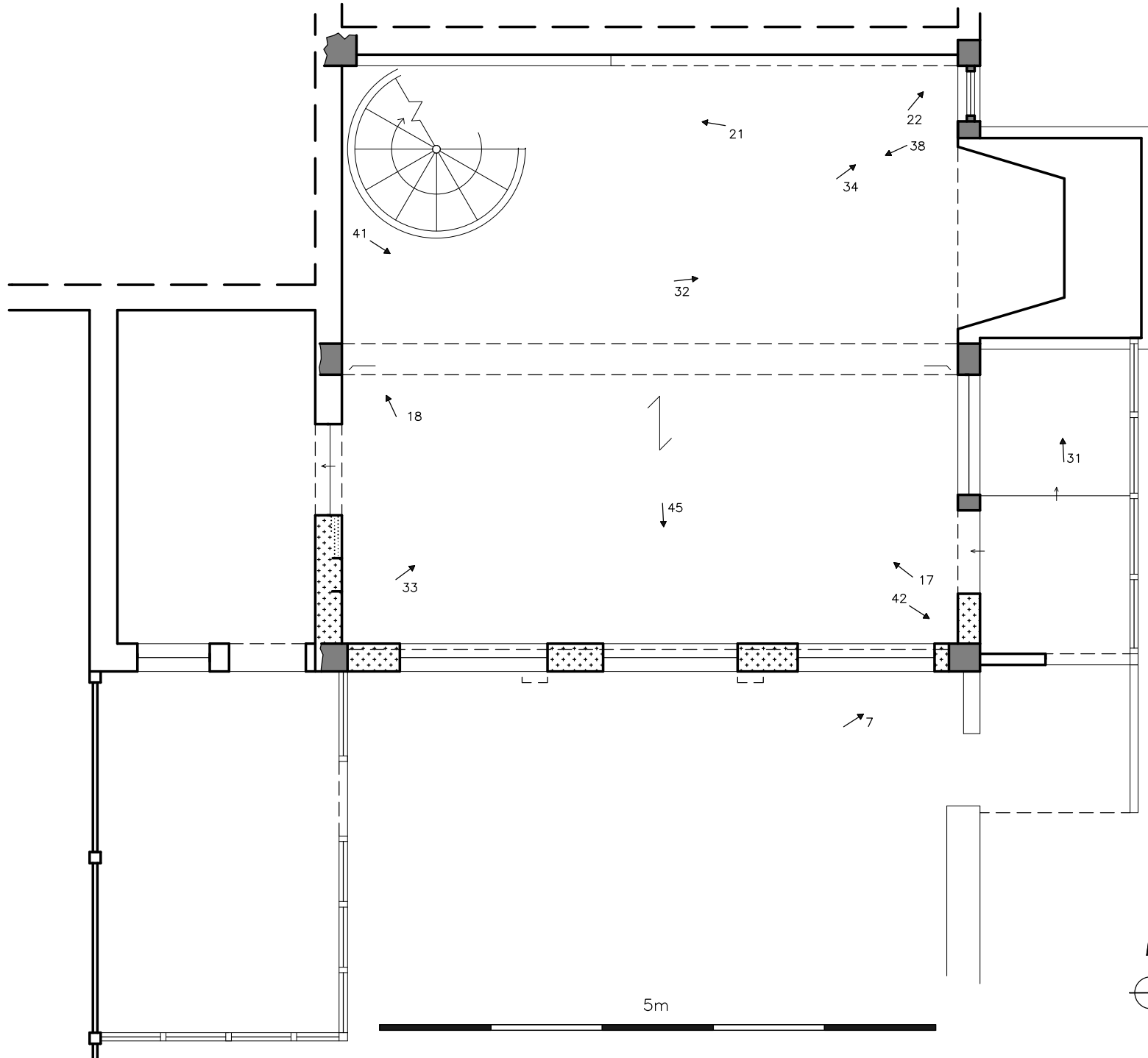
247 KEMPNOUGH HALL ROAD
 WORSLEY, SALFORD, GREATER
 MANCHESTER (NGR: SD 74640152):
 HISTORIC BUILDING ASSESSMENT
 AND RECORDING

FIGURE 27:
 BLOCK PLAN
 WITH KEY TO PHOTOGRAPHS

SCALE: 1:200
 DATE OF SURVEY: OCTOBER 2009

STEPHEN HAIGH
 Buildings Archaeologist





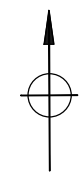
- KEY:
- X remains of sill beam visible in wall
 - ↑ step up
 - post or stud
 - late C20 window in earlier opening
 - ↔ direction of joists (over)
 - chamfer and stop
 - ▒ blocking ▒ visible brickwork
 - ↗ 1: photograph direction and number

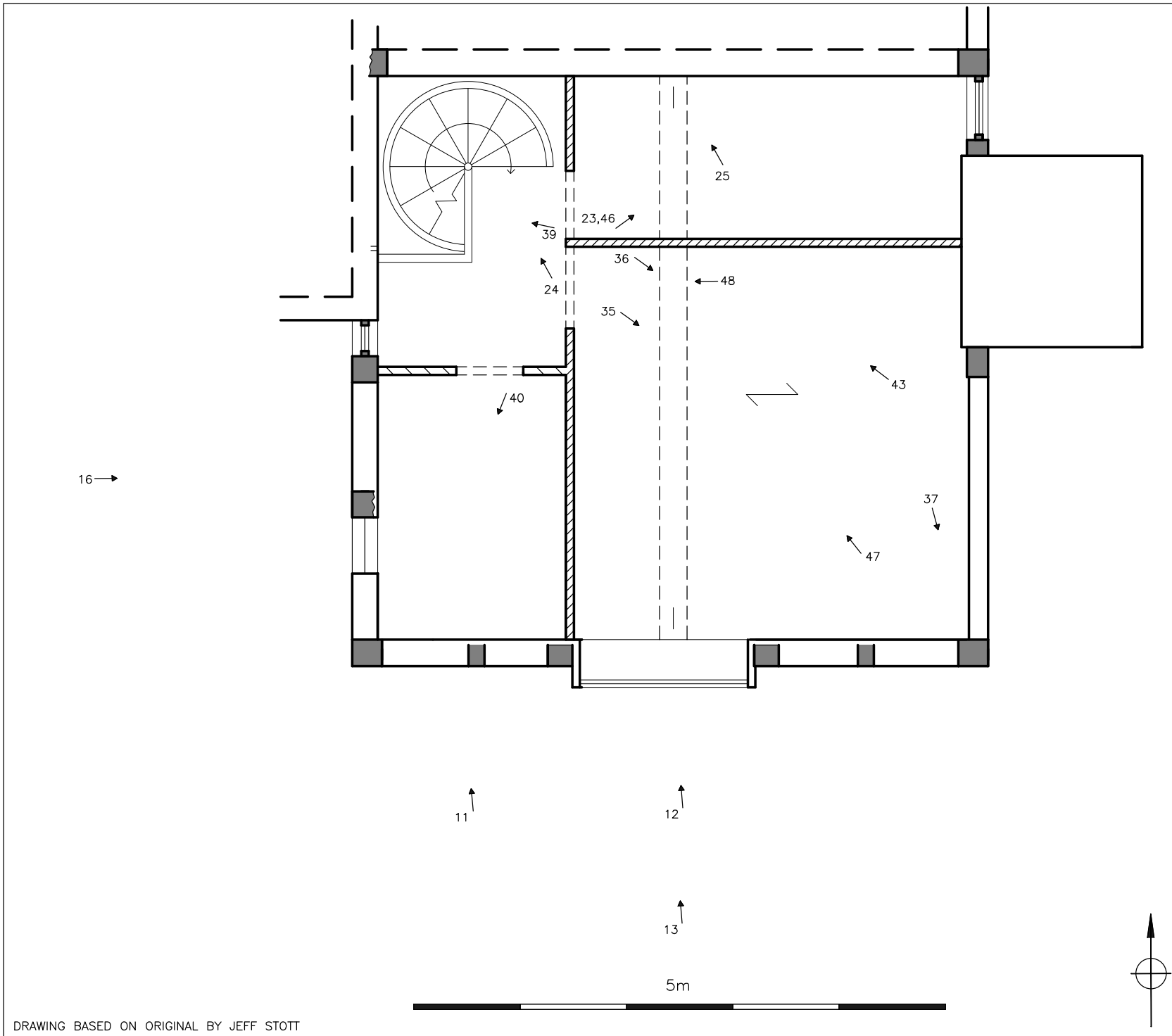
247 KEMPNOUGH HALL ROAD
 WORSLEY, SALFORD, GREATER
 MANCHESTER (NGR: SD 74640152):
 HISTORIC BUILDING ASSESSMENT
 AND RECORDING

FIGURE 28:
 GROUND FLOOR PLAN
 WITH KEY TO PHOTOGRAPHS

SCALE: 1:50
 DATE OF SURVEY: OCTOBER 2009

STEPHEN HAIGH
 Buildings Archaeologist





- KEY:
- X remains of sill beam visible in wall
 - ↑ step up
 - post or stud
 - ▭ late C20 window in earlier opening
 - pegs/holes indicating stud
 - small slot in wall plate
 - ↖ direction of joists (over)
 - chamfer
 - ↗ 1: photograph direction and number

PHOTOGRAPHS IN ROOF SPACE:
14; 19; 20; 26; 27; 28

247 KEMPNOUGH HALL ROAD
WORSLEY, SALFORD, GREATER
MANCHESTER (NGR: SD 74640152):
HISTORIC BUILDING ASSESSMENT
AND RECORDING

FIGURE 29:
FIRST FLOOR PLAN
WITH KEY TO PHOTOGRAPHS

SCALE: 1:50
DATE OF SURVEY: OCTOBER 2009

STEPHEN HAIGH
Buildings Archaeologist