



Palaeolithic  
50000 BC  
- 9999 BC

Mesolithic  
10000 BC - 3999 BC

Neolithic  
4000 BC - 2599 BC

Bronze Age  
2600 BC - 700 BC

Iron Age  
701 BC - 42 AD

Romano-British  
43 AD - 409 AD

Anglo-Saxon  
410 AD - 1065 AD

Medieval  
1066 AD - 1539 AD

Post Medieval  
1540 AD - 1901 AD

Modern  
1901 - present

# ANGLO-SAXON BIDFORD

**Little is known about Anglo-Saxon settlements in Warwickshire so the finds from Bidford are hugely important.**



In 1921 a pagan burial ground, dating to the early Anglo-Saxon period, was discovered, where 187 inhumations and 30 cremations were excavated. Since then other burials have been excavated – over 200 burials and 32 cremations are known.

Fascinating objects have been found alongside skeletons and these include brooches, rings and spearheads.

## The Cunning Woman

In 1971 a particularly unusual burial was found. It contained the skeleton of a young female.



This female was found with glass and amber beads, pendants, items which would have been part of a hip



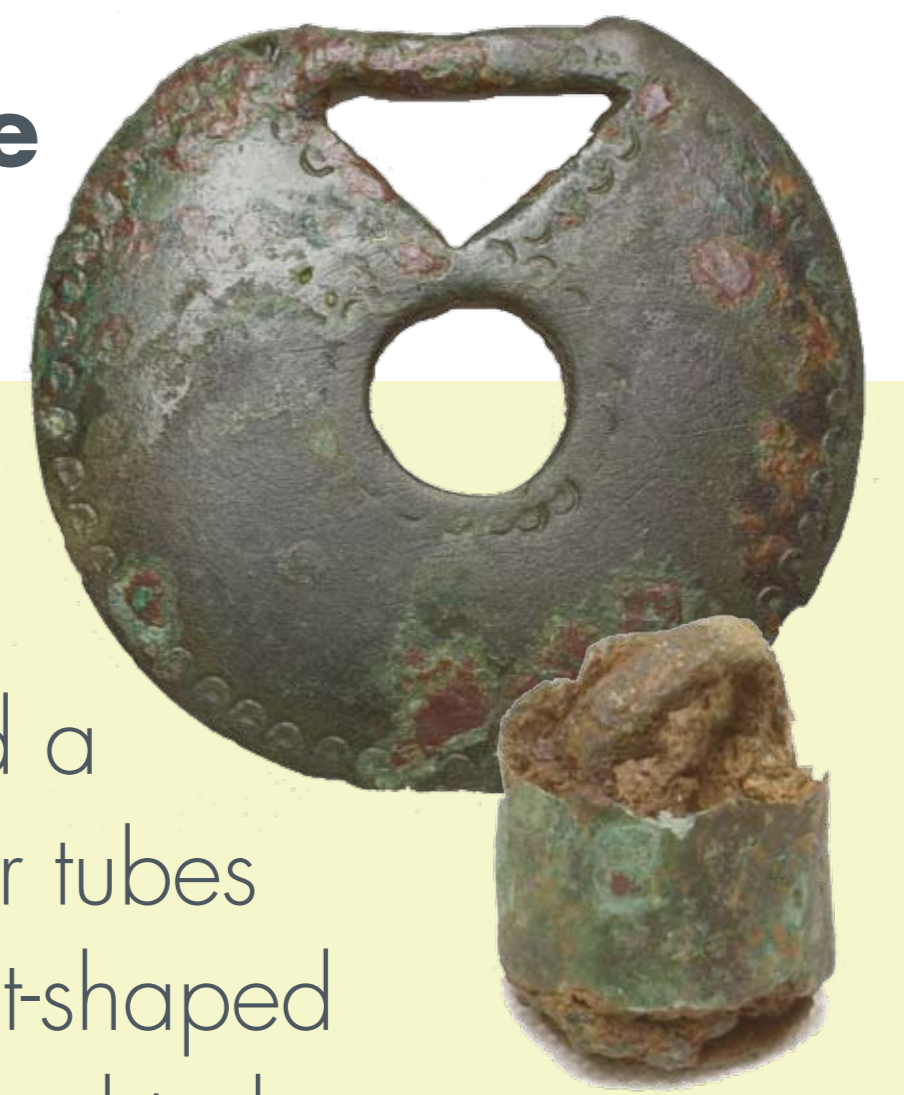
bag, two brooches and a pin.

Other items on her included a 'spangle', four small copper tubes and twelve miniature bucket-shaped pendants. These are believed to have had symbolic and magical purpose.

People think she may have practiced magic or healing. The objects she was buried with suggests that she was important to her local community.

Archaeological evidence shows that Bidford was the burial place for the local farming community. In addition to the cemetery, ditches, animal enclosures and postholes belonging to structures have been found.

Finds recovered, such as loom weights and quern stones, demonstrate everyday activities such as cloth weaving and grinding corn.



## RECORDS

Number	Name
MWA605	The site of an Anglo-Saxon cemetery known from archaeological excavations (1920s) and finds.
MWA608	The site of an Anglo-Saxon cemetery known from archaeological excavations (1970s) and finds.
MWA6132	A complex of ditches, pits and post holes below Medieval ploughing revealed by excavation. A Late Saxon pit on NE of the site contained burnt material, a bun-shaped loomweight, a scythe blade, a spearhead and ferrule, a possible barrel padlock and piece of quern. This is probably destruction debris of a late Saxon timber building.