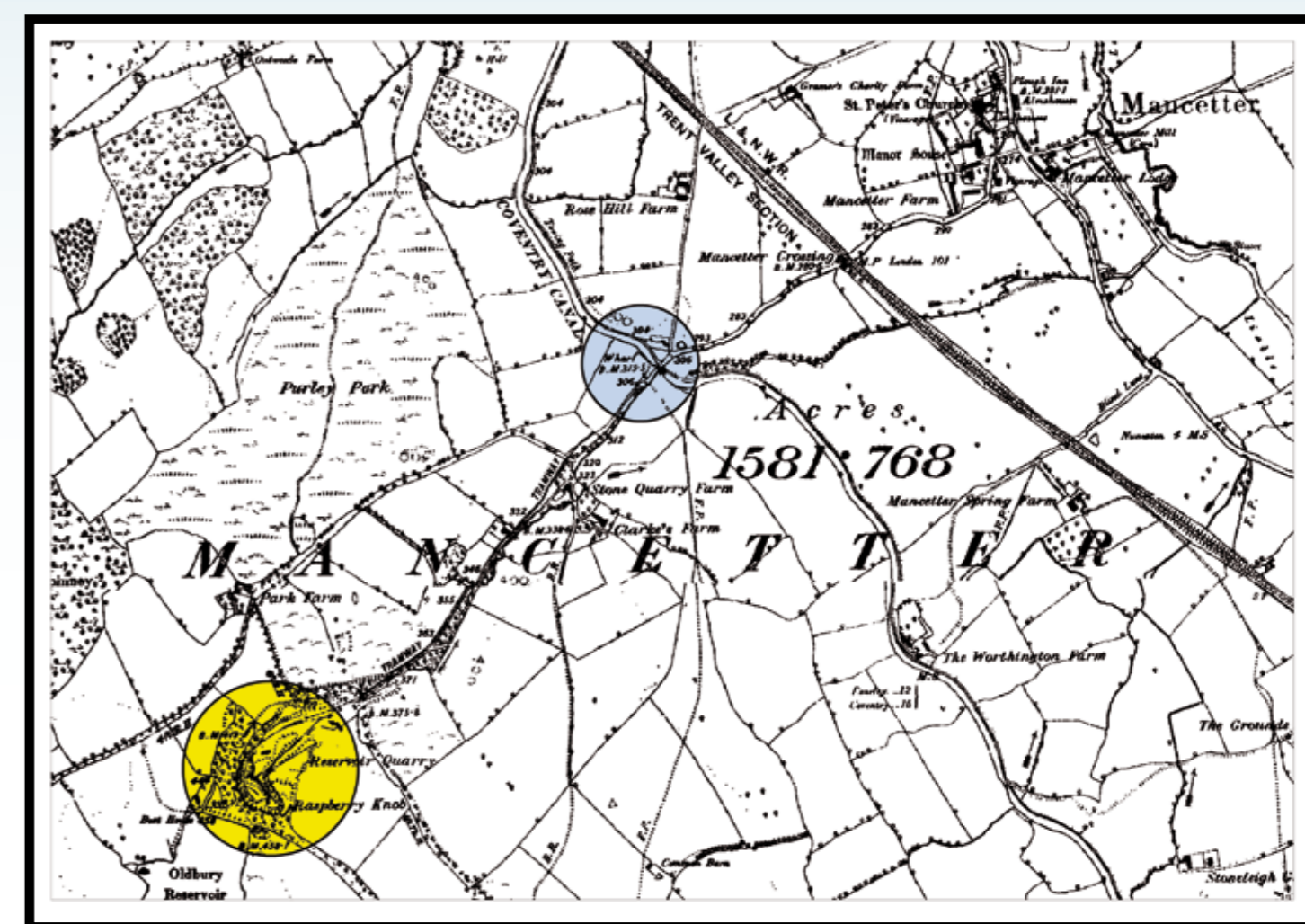




# PLACES & FACES

**Mancetter, north Warwickshire, is a settlement along the Roman road of Watling Street. There is evidence that small pits were dug during several periods in Mancetter's past, so it is possible that the Romans may have used Mancetter stone to maintain Watling Street.**

The first Ordnance Survey map in 1887 shows quarrying in the Mancetter area (highlighted in yellow). Eventually there would be three separate workings. These are now known as the Jubilee, Oldbury and Purley quarries. It also shows the local transport network. A tramway runs from the quarry north east to a wharf on the Coventry Canal (highlighted in blue). The canal was used for transporting materials from the quarry and is clearly visible, along with its tow path. Beyond the canal is the railway (now the West Coast Mainline), built in 1848, running from London to Glasgow.



**Mancetter Quarry is a source of Diorite which is a very hard granite like rock, often described as 'salt and pepper' because of its black and white colouring. The high skid resistance and durability of Diorite make it ideal for use in road building and maintenance.**

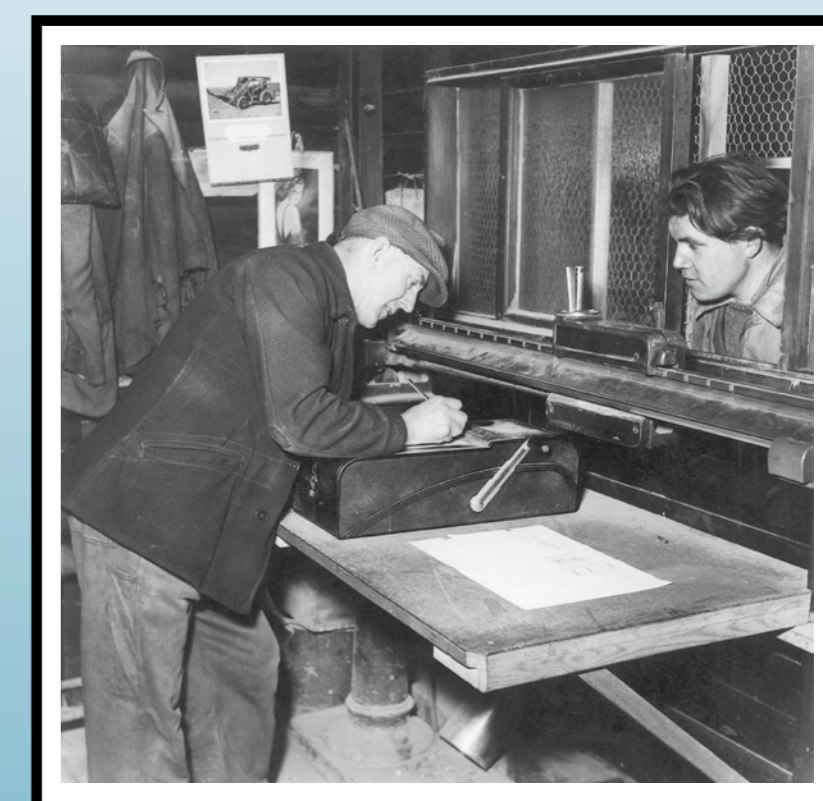


**Mancetter quarry is now worked by Tarmac who remove and process the Diorite rock. Crushed rocks, along with sands and gravels, are collectively known as aggregates.**

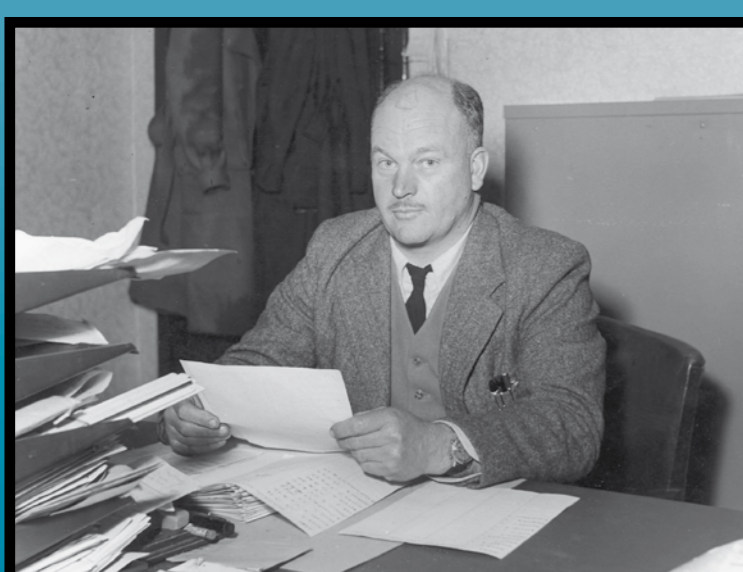


◀ This photograph, taken in the early 50s, shows one of the lorries used to transport the products from the quarry to their destination. The mechanics work on the lorry while suited garage owner, Orville Wilson, looks on. The young man on the left is Brian Clamp whose brother still works at the quarry today.

As the lorries left the site they would be weighed to check how much material was being removed and therefore its value. Here a worker makes out the receipt for the waiting driver. A pull of the lever on the side of the black box he's leaning on will produce a carbon copy for the site records. Note the calendar of glamorous ladies.



**In this picture the gentleman on the left is Joey Phillips who owned Mancetter Quarries Ltd. The other two are former managers, father Len Ireland (middle) and son Ken Ireland (right). In the late 50s, 60s and early 70s the quarry was owned by Man-Abell Granite Quarries and managed by B.S. Barlow. After that, it was owned by Tilcon and managed by D. Middleton then Mike Hardy.**



◀ Men at work. In this image on the left Ken Ireland (quarry manager in the sixties) poses for a photograph.

On the right three quarry workers look suitably keen to pose!

