

# Land at Hill Barton, Clyst St Mary, Devon

NGR SY 0002 9083

## Hill Barton Industrial Park Strip Map and Sample Excavation

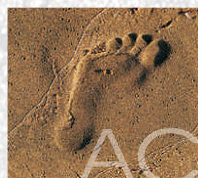
---

Prepared by:  
Kerry Tyler

On behalf of: Midas Construction

Document No: ACD350/2/0

Date: August 2011



archaeology

---

# Land at Hill Barton, Clyst St Mary, Devon

(NGR SY 0002 9083)

## Hill Barton Industrial Park Strip Map and Sample Excavation Summary Report

### 1. INTRODUCTION (Fig. 1)

1.1 This document presents the results of a strip, map and sample excavation carried out in advance of the construction of a building and associated access road, car parking and landscaping, on land at the Hill Barton Industrial Estate, Clyst St Mary, Devon (Fig. 1). The archaeological work was required by East Devon District Council as a condition of the grant of planning permission (condition 2 of planning application 11/0059.MFUL). The work was carried out by AC Archaeology in July and August 2011 and was commissioned by Midas Construction.

1.2 The area of investigation is located in the north-west corner of a much larger development scheme encompassing three fields where outline planning permission has been granted for a number of industrial units. The site lies at a height of around 46m aOD on land sloping down to the south. The underlying geology comprises Drift over Permo-Triassic and Carboniferous reddish mudstone.

### 2. ARCHAEOLOGICAL BACKGROUND

2.1 An archaeological evaluation of the wider development area was undertaken by Exeter Archaeology in 2009 (Farnell 2009). A small number of prehistoric features were exposed, along with pottery and lithics dating from the Neolithic/Early Bronze Age and Middle Iron Age. A series of ditches forming part of a Romano-British field system was also discovered. The finds assemblage gives a date in the 2nd century AD but also includes earlier and later Roman material. This assemblage also indicates the presence of a settlement in the vicinity of the current site, and almost certainly located within the larger development scheme. A pair of post-medieval ditches was also uncovered and corresponded to a field boundary depicted on the 1839 tithe map.

2.2 In October 2010 topsoil stripping was undertaken within the central part of the current development area. This was carried out under the supervision of Exeter Archaeology using the site name Phase 1 excavation (Passmore 2010). This identified a small quantity of archaeological remains, including a few prehistoric features and a length of the pair of post-medieval ditches identified in the evaluation stage.

### 3. RESULTS (Fig. 2)

3.1 The entire development area was topsoil stripped under archaeological control. The topsoil was generally 0.3-0.4m thick, and a thin spread of subsoil was present within the western part of the site. This comprised pale brown silty clay measuring between 0.05 and 0.15m thick, which corresponded with the deposit seen in the 2009 evaluation trenches excavated in the area.

3.2 The excavation exposed the continuation of the pair of post-medieval field boundary ditches as noted in both the evaluation and phase 1 excavations. It also exposed the

continuation of the linear feature exposed in evaluation trenches 29 and 30, although due to weather conditions and nature of the ground it was extremely difficult to see even when cleaned.

#### **4. DISCUSSION**

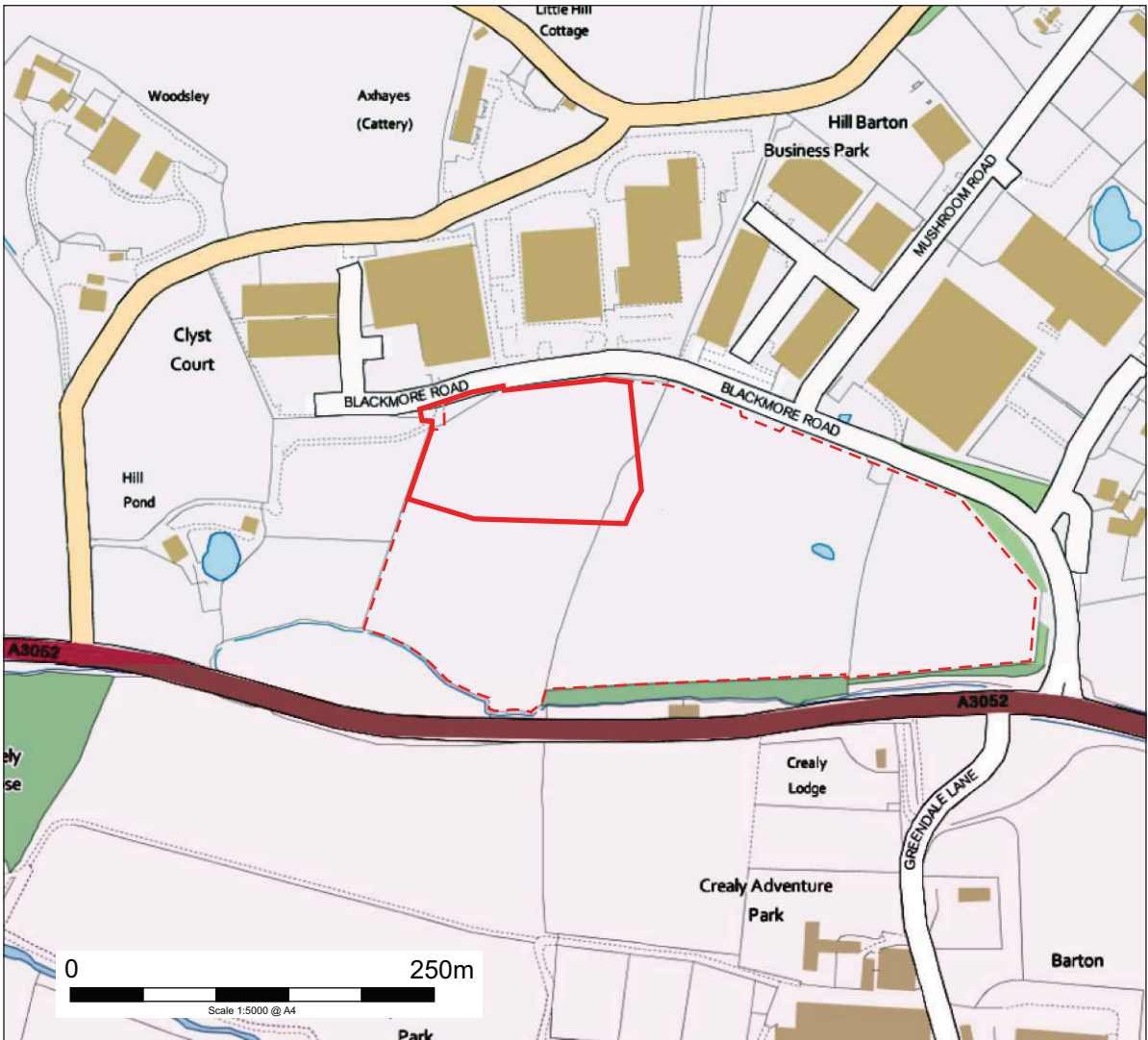
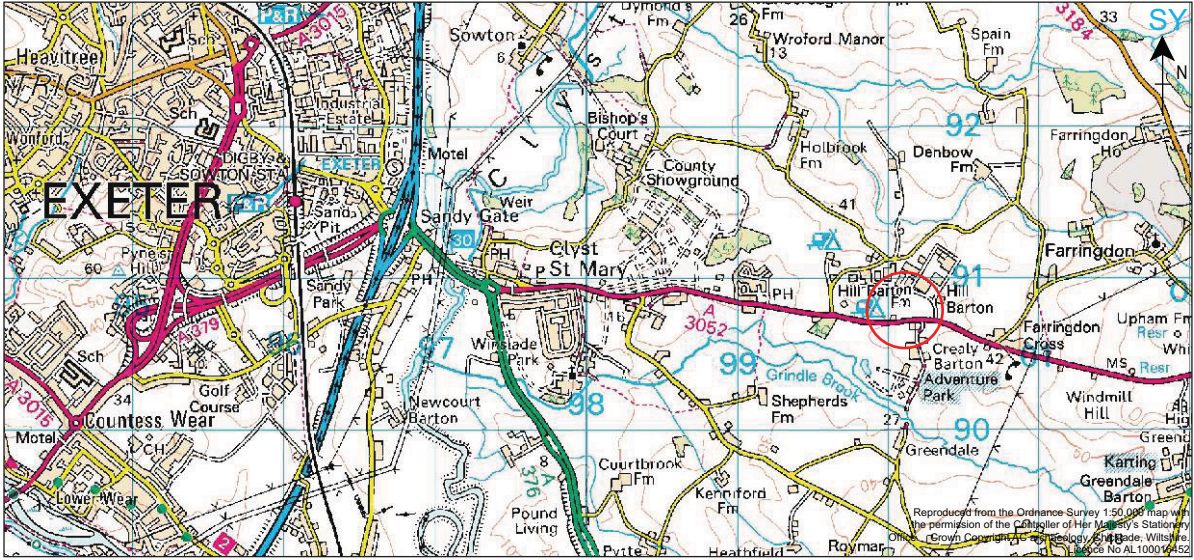
- 4.1** No new archaeological features were exposed during this phase of works. The known post-medieval field boundary ditches were uncovered across the stripped area. A short length of a ditch previously observed in evaluation trenches 29 and 30 was also recorded. No finds were recovered from this feature, and it remains undated.

#### **5. REFERENCES**

Farnell, A.J., 2009 *An Archaeological Trench Evaluation on Land Between Hill Barton Industrial Estate and the A3052 Exeter to Sidmouth Road*, Exeter Archaeology Report No. **09.110**.

Passmore, A.J., 2010 *Hill Barton Industrial Park Phase 1 Excavation Summary Report*, Exeter Archaeology non-number report.

Kerry Tyler  
AC archaeology  
August 2011

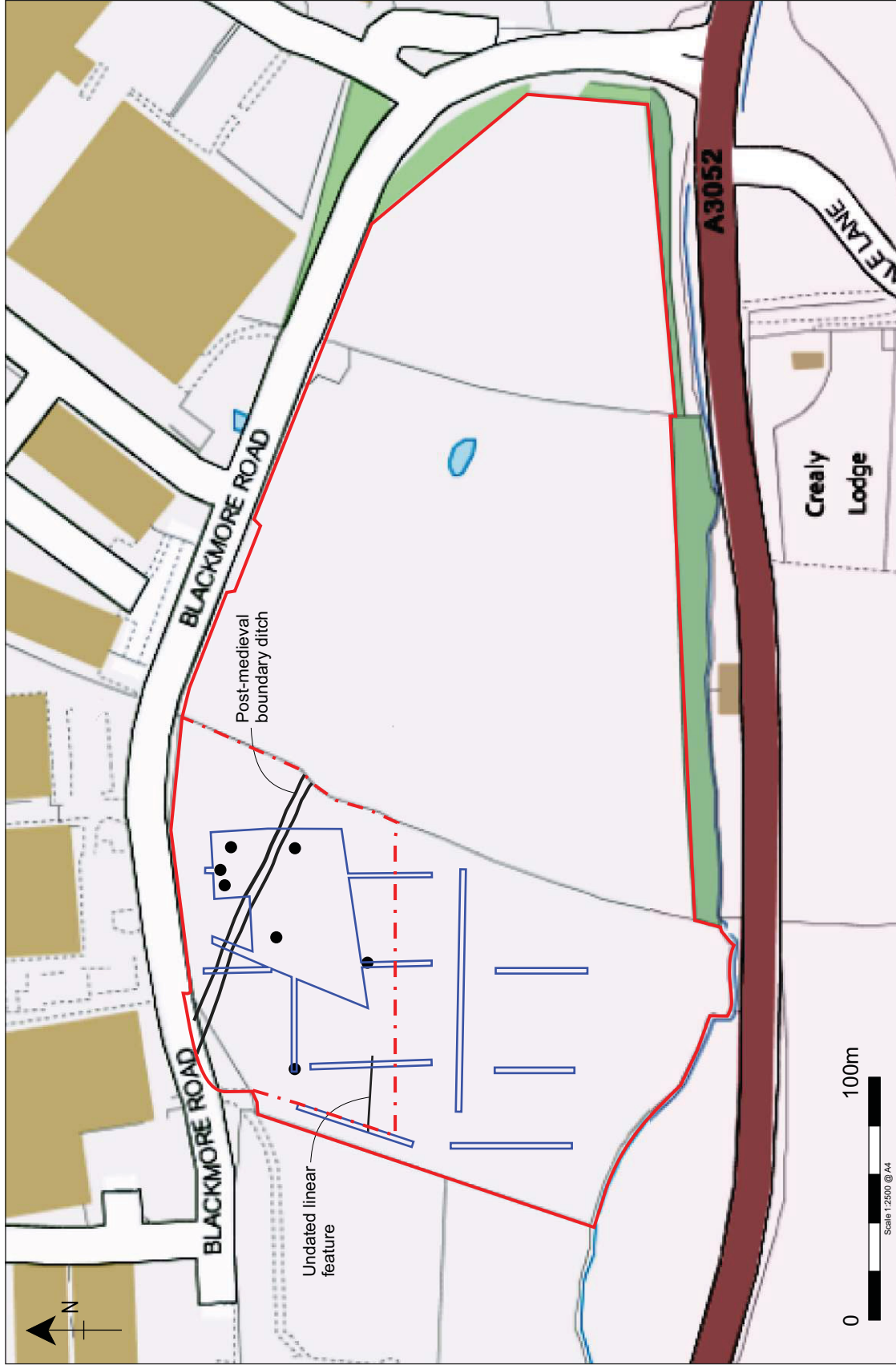


- Application area
- Boundary of industrial park

PROJECT  
 Land at Hill Barton, Clyst St Mary, Devon

TITLE  
 Fig. 1: Location of site





Land at Hill Barton, Clyst St Mary, Devon

TITLE

 Boundary of industrial park

 Previous excavation areas and recorded features

 Stripped area

Fig.2: Location of current development and previous archaeological investigations and features



### Wiltshire Office

AC archaeology Ltd  
Manor Farm Stables  
Chicklade  
Hindon  
Nr Salisbury  
Wiltshire  
SP3 5SU

Telephone: 01747 820581  
Fax: 01747 820440

### Devon Office

AC archaeology Ltd  
Unit 4, Halthaies Workshops  
Bradninch  
Nr Exeter  
Devon  
EX5 4LQ

Telephone/Fax: 01392 882410

[www.acarchaeology.co.uk](http://www.acarchaeology.co.uk)