

Sidwell Street tree pits, Exeter

SX 9226 0929

Underground Passages (Devon 182; National Heritage
List no. 1003851)

Results of an archaeological watching brief

Prepared by:
Andrew Passmore BSc MIfA

On behalf of:
Exeter City Council

Document No: ACD522/2/0

Date: January 2013



archaeology

Exeter City HER – Data Entry Sheet

Area (m2) 41.05 **NGR Easting** 29226 **NGR Northing** 09290

NGR Qualifier GCE **Event Type** WB **Event Start** 11-08-2012

Event End 20-09-2012

Site Name Sidwell Street Tree Pits **Fieldworker Name** Chris Caine and Stella De-Villiers

Associated Organisation AC archaeology **Parish** St Sidwell

Postal Address

Event Description (continue over if necessary)

Introduction (Figs 1 and 2)

An archaeological watching brief was carried out by AC archaeology on behalf of Exeter City Council during the excavation of a number of tree pits close to the junction of New North Road and Longbrook Street, Exeter (Figs 1 and 2). The excavations formed part of a larger scheme of alterations to the road layout and associated landscaping outside the new John Lewis store. The works had been preceded by an archaeological evaluation (Hughes 2012) carried out to establish the position and depth of the Underground Passages. These are a medieval water system that is designated as a Scheduled Monument (Devon 182). They consist of two separate supplies or conduits – the City Passage and the Cathedral Passage – which both run under the scheme area. Scheduled Monument Consent was granted for the work, and the watching brief was carried out in accordance with a written scheme of archaeological work (Passmore 2012).

Results (Fig. 2)

Tree pits 3a and 3b were monitored; pit 4 close to the line of the Underground Passages was not excavated.

Tree pit 3a (292307 92903). This pit was located within New North Road and measured 13.45m long by 2.30m wide. The central area was excavated to a depth of 0.20m below the surface, with either side being reduced to a depth of 0.95m below the surface. The deposit sequence comprised the 0.20m thick concrete road surface and 0.15m thick gravel sub-base that had been laid onto a dark-mid red loose clayey-sand containing abundant bricks of various types and dates, as well as slate, glass and iron pipe. No archaeological features exposed.

Tree pit 3b (292292 92918). This pit was located at the junction of New North Road and Longbrook Street, and had been sited between the two underground passages in an area identified during the evaluation as being disturbed by modern services and a former road surface. The pit was excavated to a maximum depth of 0.85m. The deposit sequence was as recorded in the northwest end of the evaluation trench. The lowest exposed deposit was the concrete make-up and associated road surface 126. Contemporary granite kerbstones and a

tarmac pavement surface were also partially exposed. These were overlain by deposits (100-102) of soil, concrete and tarmac associated with the present (2012) road.

Summary

No archaeological features were exposed and no finds recovered. The tree pits were dug entirely through 19th and 20th-century road surfaces and associated make-up.

Sources Consulted

Hughes, S., 2012, *Underground Passages, Exeter, (NGR SX 9226 9290), results of an archaeological evaluation, Underground Passages (Devon 182; National Heritage List no. 1003851)*, AC archaeology document no. **ACD470/2/0**.

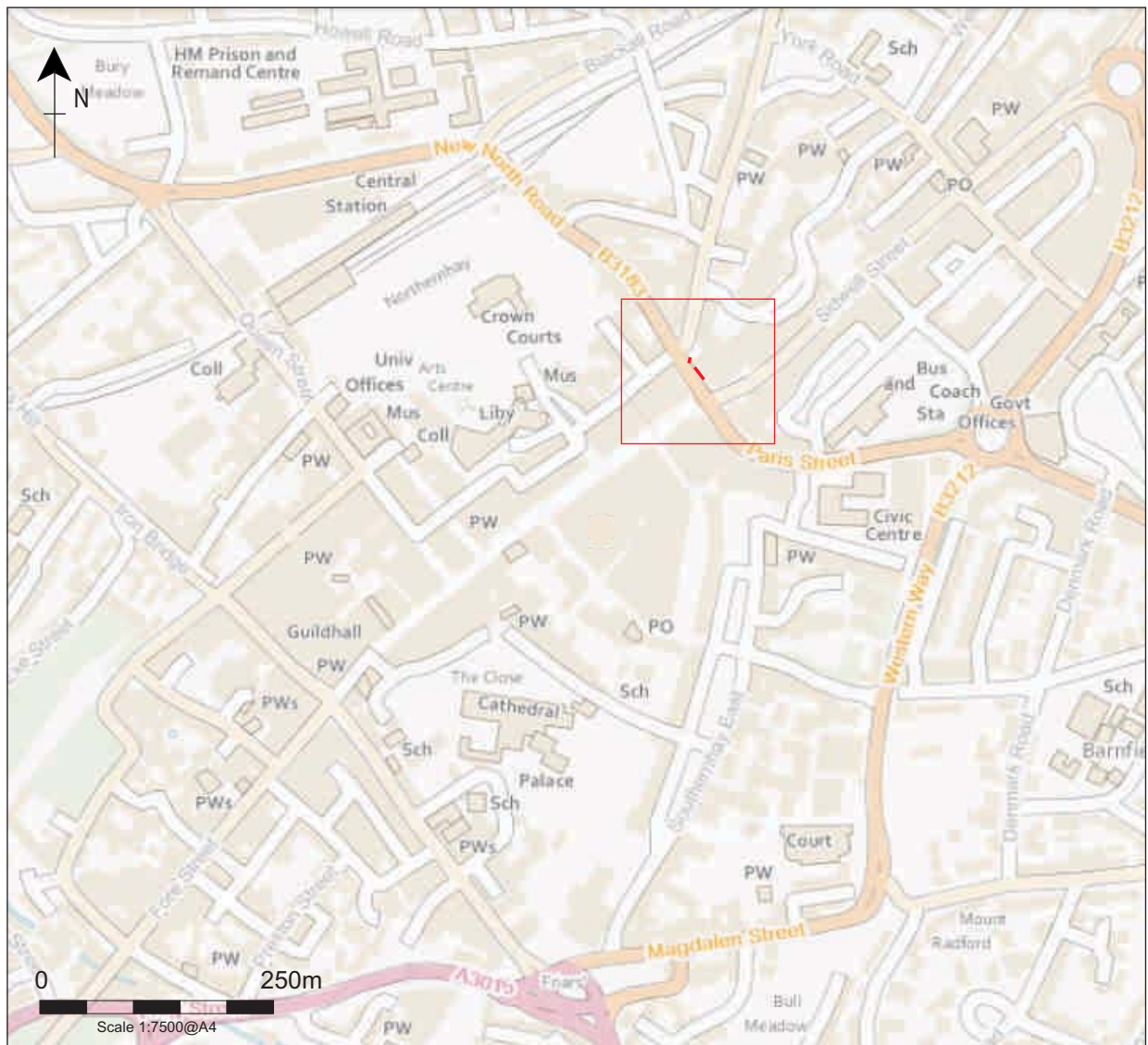
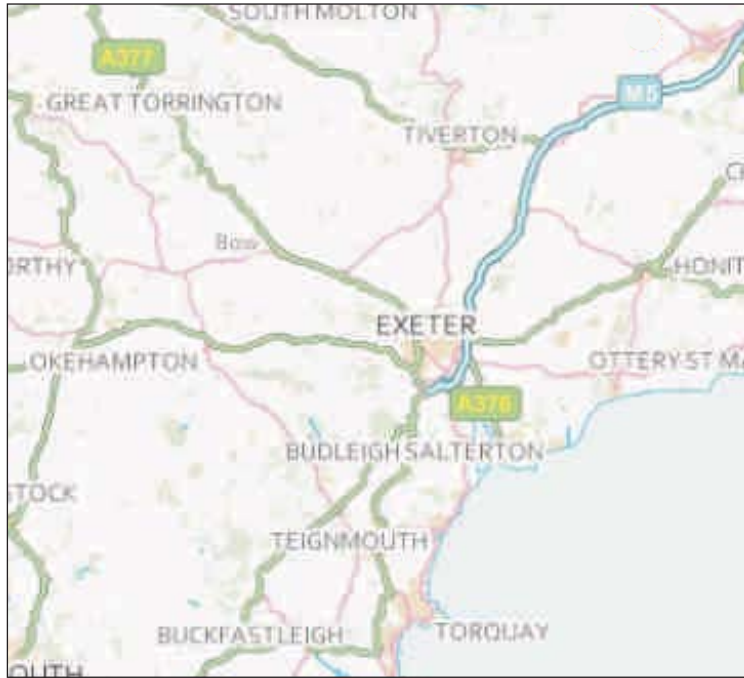
Passmore, A., 2012, *New North Road & Sidwell Street Tree Pits, Exeter, (NGR SX 9226 9290), Underground Passages (Devon 182; National Heritage List no. 1003851), Written Scheme of Archaeological Work for archaeological monitoring and recording*, AC archaeology document no. **ACD522/1/0**.

N.B. This document represents the only report on the investigation.

Sample Deposit Column

NGR Easting 292307		NGR Northing	92903
Surface Level (m AOD)	44.70	Intervention to (m AOD)	43.75
Water Level (m AOD)	N/A		
Principal Deposit Top (m AOD)	N/A		
Principal Deposit Base (m AOD)	N/A		
Geology	basalt		
Listed Building PRN	N/A	Listed Building Grade	

Additional/Synthetic Information



Reproduced from the Ordnance Survey 1:25,000 map with the permission of the Controller of Her Majesty's Stationery Office © Crown Copyright AC archaeology, Chicklade, Wiltshire. Licence No AL100016452

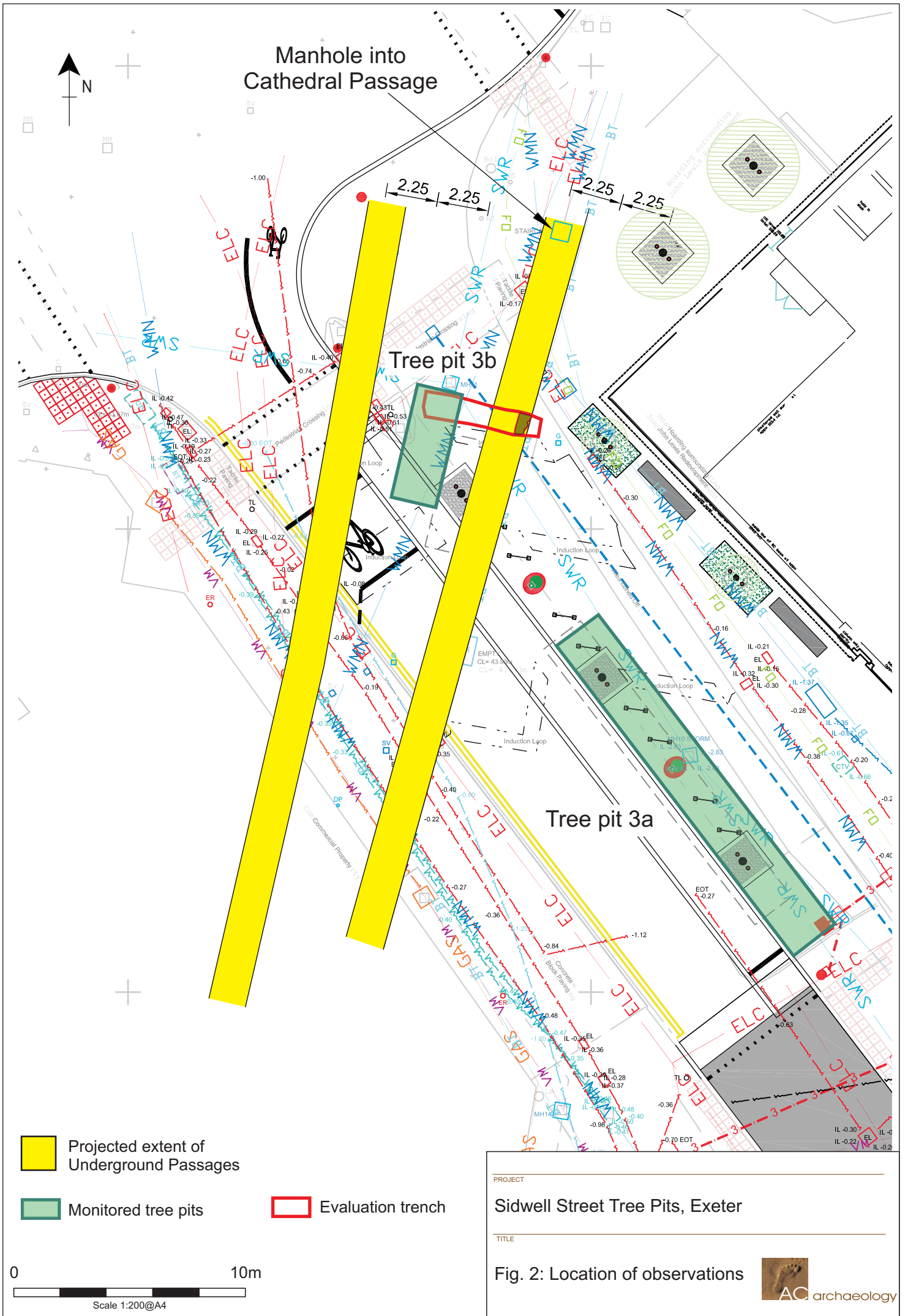
PROJECT

Sidwell Street Tree Pits, Exeter

TITLE

Fig. 1: Site location





Devon Office

AC archaeology Ltd
Unit 4, Halthaies Workshops
Bradninch
Nr Exeter
Devon
EX5 4LQ

Telephone/Fax: 01392 882410

Wiltshire Office

AC archaeology Ltd
Manor Farm Stables
Chicklade
Hindon
Nr Salisbury
Wiltshire
SP3 5SU

Telephone: 01747 820581
Fax: 01747 820440

www.acarchaeology.co.uk