

SWW SEWER RELAY, NEWTON FERRERS

(NGR SX 54732 47870 to SX 54893 47926)

Results of an archaeological watching brief

Prepared by:
Paul Jones

On behalf of:
South West Water

Document No: ACD603/2/0

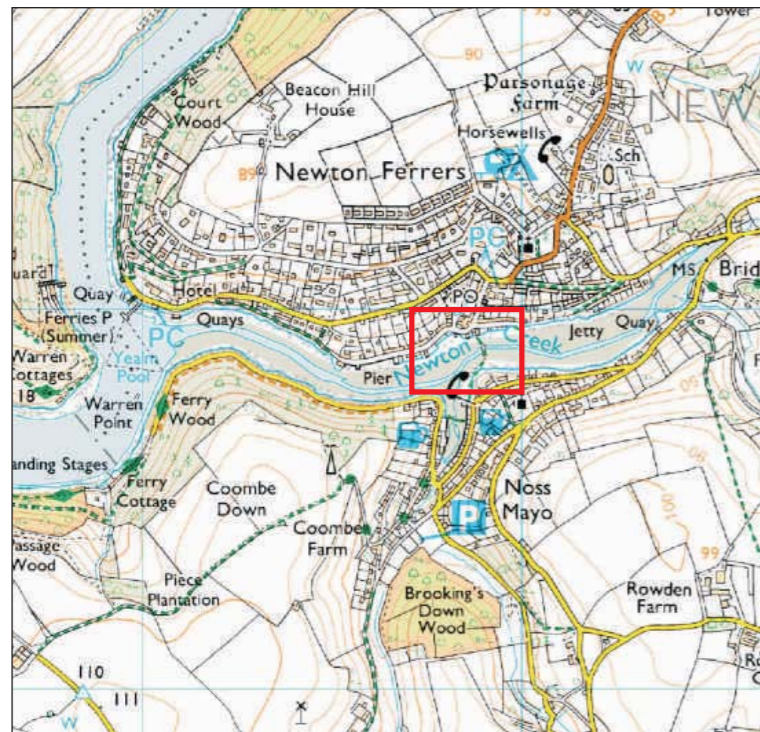
Date: September 2013



archaeology

Devon County Council Historic Environment Record

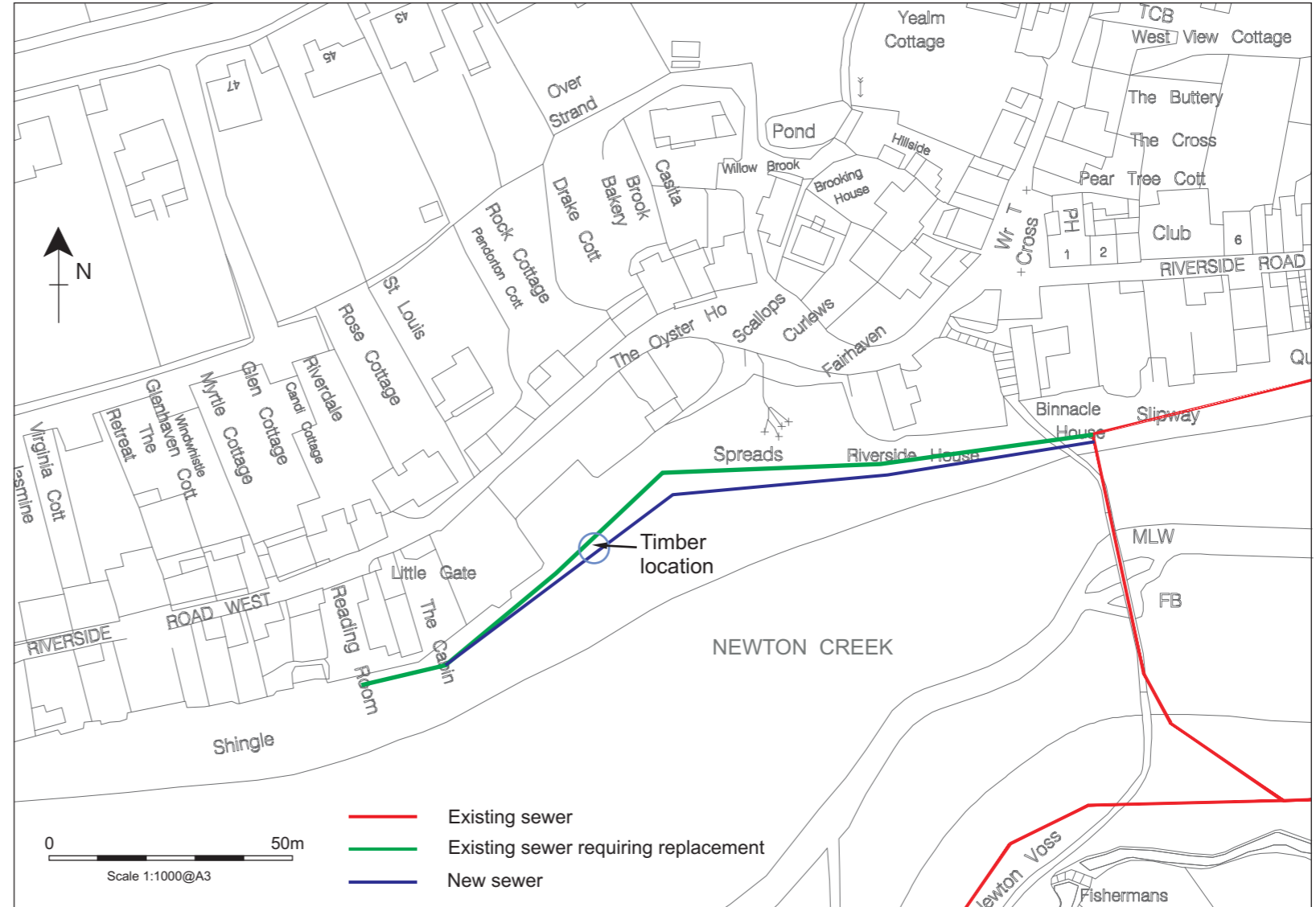
Civil Parish & District: Newton and Noss, South Hams	National Grid Reference SX 54732 47870 to SX 54893 47926	Number: (Leave blank for HES to fill in)
Subject: SWW Sewer Relay, Newton Ferrers; Results of an archaeological watching brief		Photo attached? N
Planning Application no: N/A	Recipient museum: Plymouth City Museum	
OASIS ID: 151651	Museum Accession no: 2012.233	
Contractor's reference number/code: ACD603	Dates fieldwork undertaken: 10 January 2013 – 16 February 2013	
<p>Description of works.</p> <p>Introduction</p> <p>A watching brief was maintained during the excavation of 160m long sewer trench, and associated manholes, on the foreshore south of Newton Ferrers (Fig. 1). The investigations were commissioned by Hyder Consulting on behalf of South West Water, and were requested by the Devon County Historic Environment Team on the basis that the works may impact on buried archaeological deposits relating to the historic use of the shore, or of sunken vessels/hulks or parts thereof, or deposits relating to former land surfaces now submerged due to rising sea levels. The underlying geology comprises Devonian mudstone, siltstone and sandstone of the Dartmouth group.</p> <p>Results</p> <p>The trench was located immediately south of the existing sewer pipe, and measured 0.60m wide and between 0.60m-2m deep. The following deposits were encountered:</p> <ul style="list-style-type: none"> • 100 – coarse foreshore silts containing angular stone, with red brick fragments within the upper 0.40m. This deposit was between 0.2m and 1.7m deep, and was generally deeper at the eastern end of the trench. • 101 – dark grey clay. This was only present in the central to eastern part of the trench (between the Harding and Binnacle House), and measured between 0.30m-0.60m deep. • 102 – natural mudstone bedrock, which was exposed at depths of between 0.50m and 1.2m from the foreshore surface. The higher exposures were generally in the centre of the trench in the area of the Harding. <p>No archaeological features or deposits were exposed during the excavations.</p> <p>A single worked oak timber, excavated from context 101 to the southwest of the Harding was recorded. This had partially lain within the existing service trench and had been damaged by plant. It measured 1.30m long by up to 0.34m deep by 0.13m wide, and in profile was a squat, wide Y shape. The timber had formed a rib for a small boat. The only features were four dowel or nail holes – two on each side – as well as a possible mortice where the rib would have fitted into the keel. The holes were irregularly positioned, both in distribution and the face from which they had been drilled. On this basis, and the crude 'finish' of the lower face, it is possible that the rib was never completed, and represents shipbuilding debris rather than the remains of a wreck. The timber was not datable, and was not removed from site.</p>		
<p>A plan as well as any other relevant drawings must be attached showing the location and extent of site, areas investigated and features exposed.</p>		
Recorder: Paul Jones, AC archaeology	Date sent to HER: 18 September 2013	



0 1km
Scale 1:20,000@A3

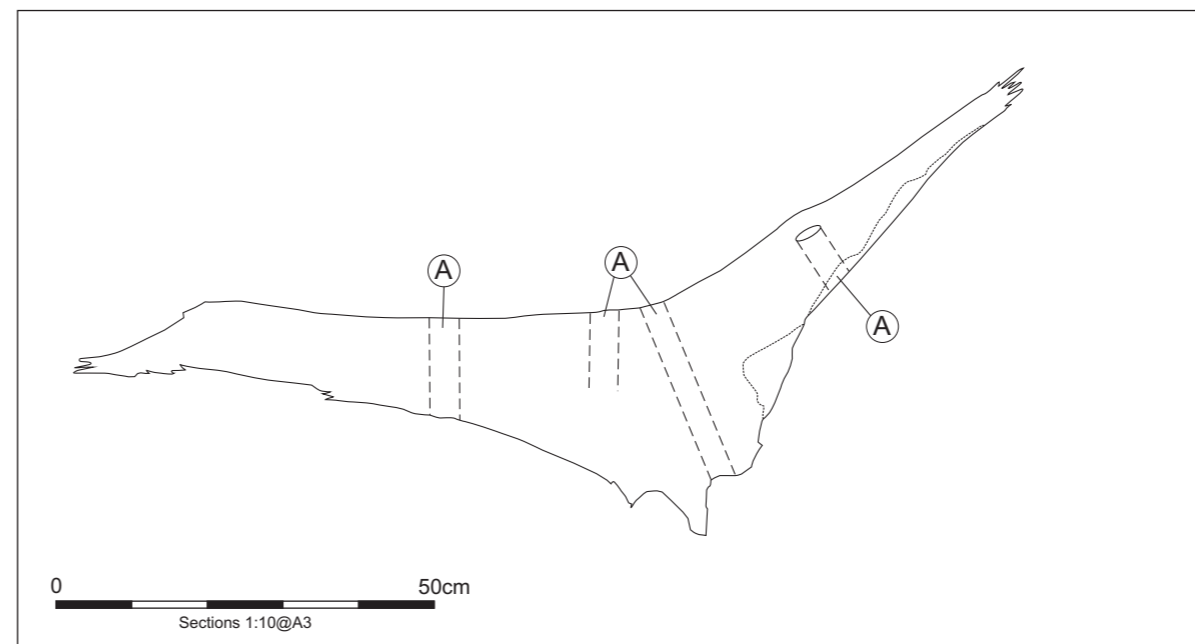
Reproduced from the Ordnance Survey mapping with the permission of the Controller of Her Majesty's Stationery Office © Crown Copyright AC archaeology, Chicklade, Wiltshire. Licence No AL100016452

a) plan of timber location



Plan supplied by South West Water

b) Side face of timber



PROJECT
Newton Ferrers, Devon

TITLE
Fig. 1 Location of observations and profile of excavated timber



Devon Office

AC archaeology Ltd
Unit 4, Halthaies Workshops
Bradninch
Nr Exeter
Devon
EX5 4LQ

Telephone/Fax: 01392 882410

Wiltshire Office

AC archaeology Ltd
Manor Farm Stables
Chicklade
Hindon
Nr Salisbury
Wiltshire
SP3 5SU

Telephone: 01747 820581
Fax: 01747 820440

www.acarchaeology.co.uk