

2 & 2A FORE STREET, BOLTON CROSS, BRIXHAM,
TORBAY

(NGR SX 92353 56025)

Results of historic building recording

Torbay Council planning reference P/2012/0911

Prepared by:
Andrew Passmore BSc MIfA

On behalf of:
Torbay Council

Document No: ACD697/1/0

Date: June 2013



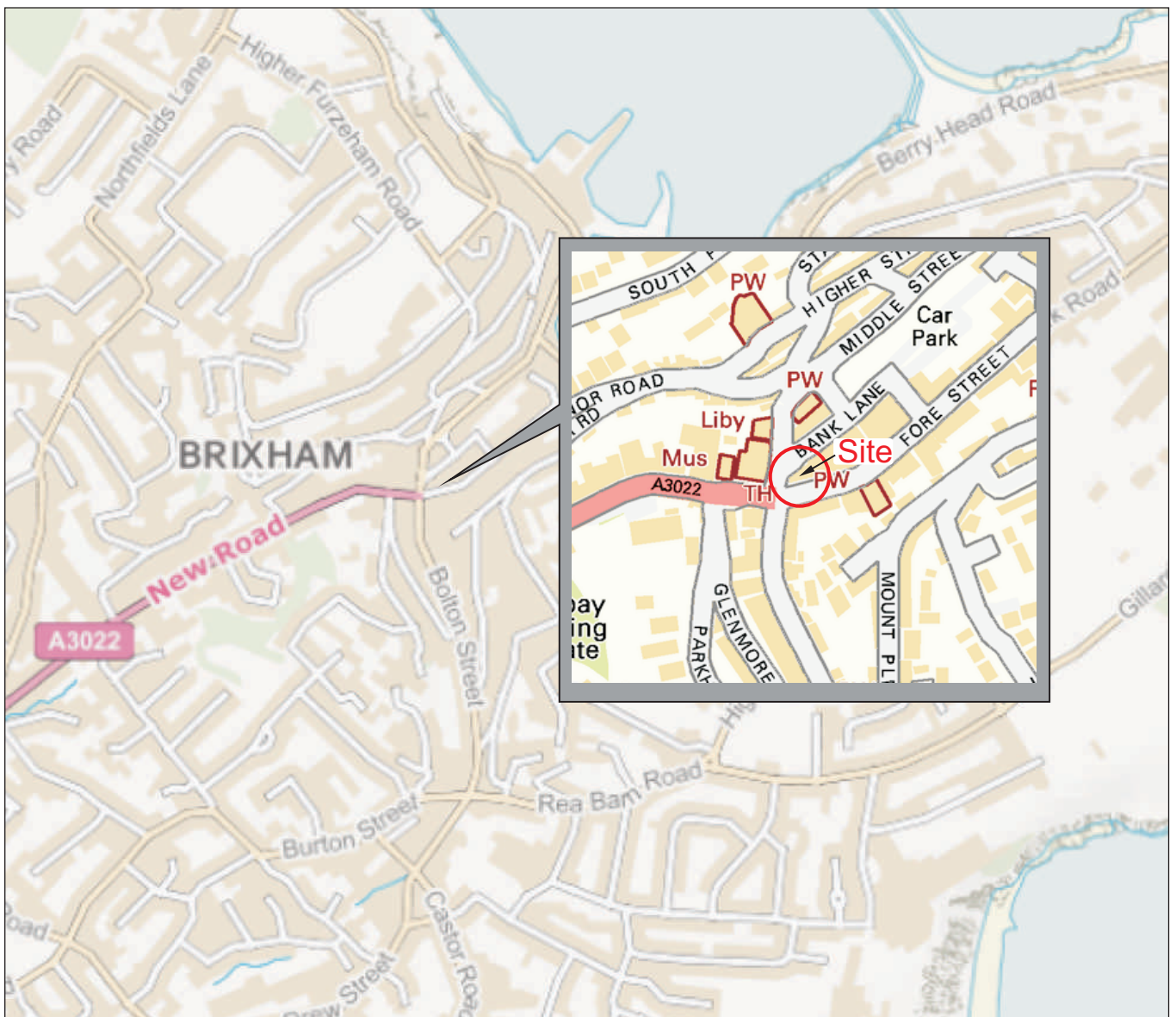
archaeology

Torbay Historic Environment Record

| | | |
|---|---|---|
| Civil Parish & District: Brixham, Torbay | National Grid Reference SX 92353 56025 | Number: (Leave blank for HES to fill in) |
| Subject: 2 and 2a Fore Street, Bolton Cross, Brixham, Torbay: Results of historic building recording | | Photo attached? N |
| Planning Application no: P/2012/0911 | Recipient museum: Brixham Museum | |
| OASIS ID: 152898 | Museum Accession no: N/A | |
| Contractor's reference number/code: ACD697 | Dates fieldwork undertaken: 3 June 2013 | |
| <p>Description of works.</p> <p>Introduction (Figs 1-2)</p> <p>An updated record of the 19th-century cellars and as well as ground-floor architectural features was made during demolition of the property. The building had been recorded by Jacobs Engineering UK Ltd during the preparation of a heritage assessment in 2010. Since 2010, the cellars had been altered, primarily through the insertion of a drain and the raising of the floor level in one area. Access to the cellars was not therefore possible, and recording was made through holes in the floor above. The ground floor had been stripped of finishes and fittings, and several new observations were made. The existing walls of the cellars will be retained after demolition and the spaces infilled. No exposures of deposits behind the walls will be made.</p> <p>The cellars</p> <p>The brick partition wall dividing the southeast and southwest cellar had been removed and a concrete-encased drain serving the internal downpipe adjacent to the southern elevation laid, roughly in the same position. The basement light in the south elevation of the southeast cellar is continuous with the first-floor window opening. An opening in the basement section had been infilled using brick and concrete blocks. The lower section of the stone masonry below is rendered. In the northeast cellar the internal steps from the doorway in the north elevation had been removed. This had been necessitated by the recent laying of a new raised concrete floor level within this cellar. This appeared to be unfinished, since reinforcing bars were present in some areas rising above the concrete.</p> <p>The ground floor</p> <p>The entire west and southwest façades are of late 20th-century date and are constructed of brick and concrete block with glass windows on earlier stone foundations represented by the cellar walls. In the southeast room the fireplace in the east elevation has been blocked. To the north, there are scars on the walls of a curving staircase rising from beside the fireplace. In the northeast corner of the north elevation, behind the stairs, brick masonry is partially visible. It is not clear whether this is of two phases (the upper section is of modern date) or whether this represents a former opening. To the west is a low-level opening infilled with brick and concrete blocks. This feature rises from the basement, where it was previously recorded. It possibly represents a former doorway between the cellar and yard to the north.</p> <p>In the northeast room there is a projecting fireplace stack in the east elevation (above the stack previously recorded in the basement) with a blocked fireplace. In the north elevation, the present doorway is a modern fire exit. This has been inserted into a stone blocked earlier opening. The east end of the south elevation (above the cellar corridor) is constructed from thin overfired red bricks laid in stretcher bond. To the west, there are scars on the stone wall and overlying plaster of a former staircase, rising from shop front to the west, to the first floor.</p> | | |
| <p>A plan as well as any other relevant drawings must be attached showing the location and extent of site, areas investigated and features exposed.</p> | | |
| <p>Recorder:</p> <p>Andrew Passmore, AC archaeology</p> | | <p>Date sent to HER:</p> <p>24 June 2013</p> |



Reproduced from the Ordnance Survey mapping with the permission of the Controller of Her Majesty's Stationery Office © Crown Copyright AC archaeology, Chicklade, Wiltshire. Licence No AL100016452



0 500m

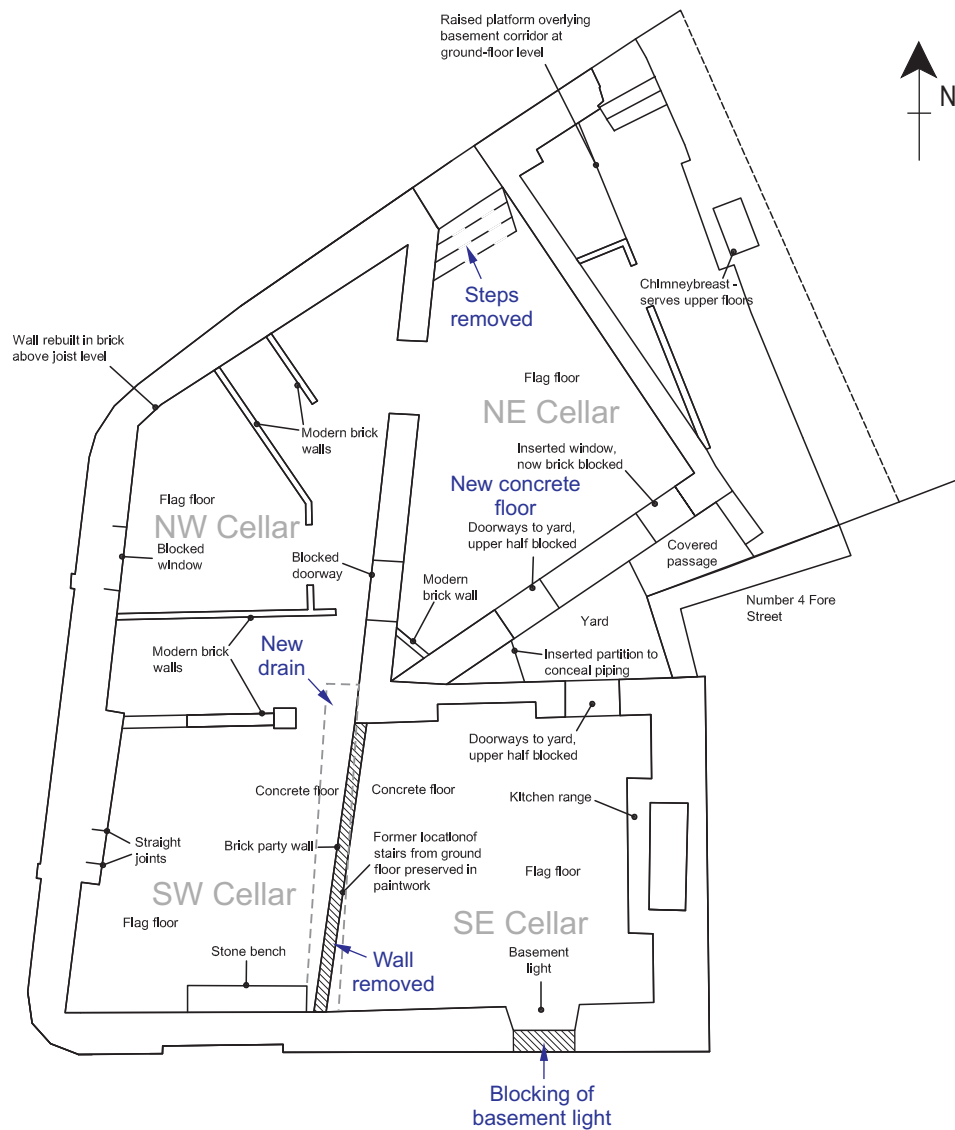
PROJECT

2 & 2a Fore Street, Brixham, Devon

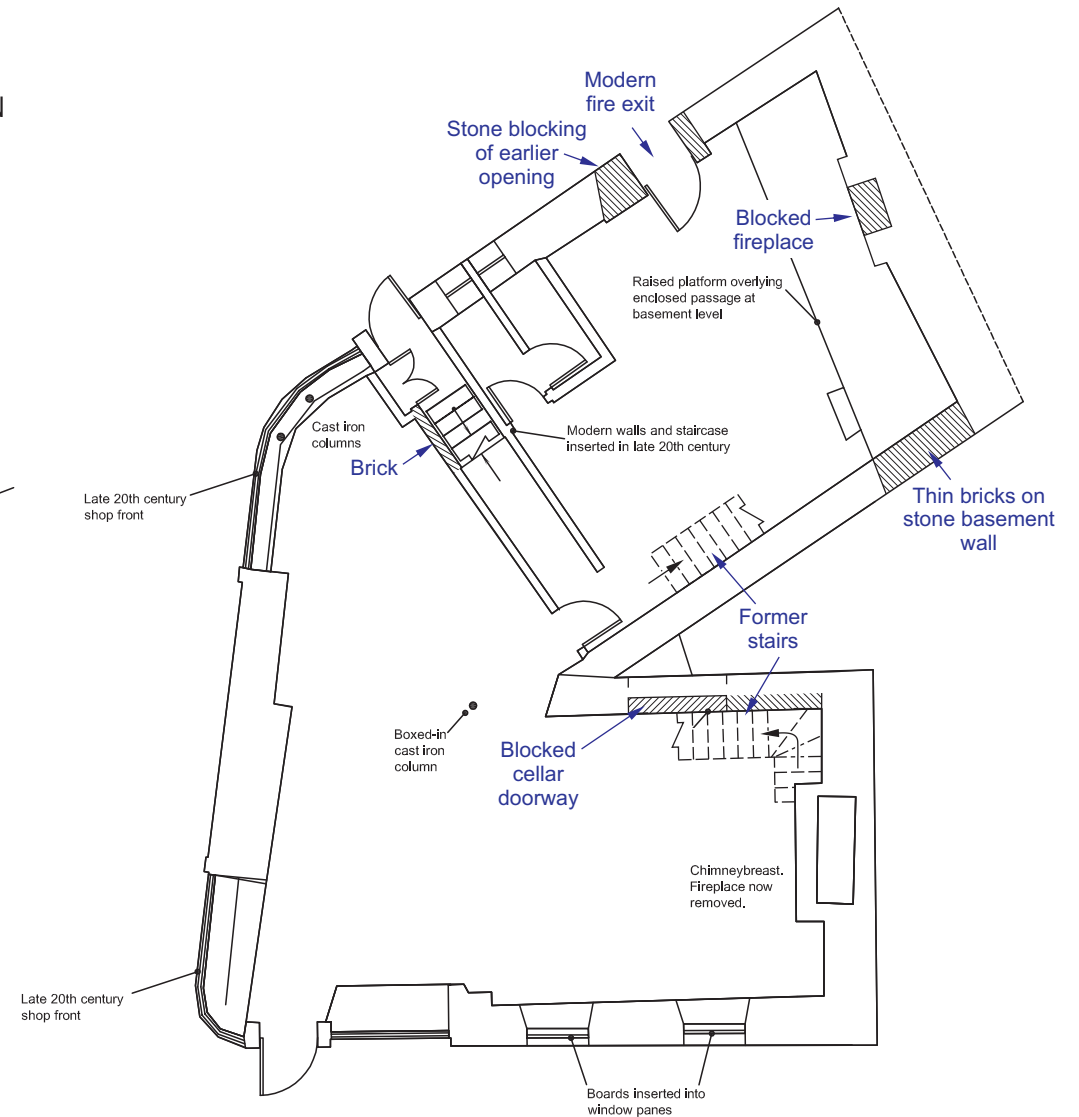
TITLE

Fig. 1: Location of site

Basement Plan



Ground-Floor Plan



PROJECT

2 & 2a Fore Street, Brixham, Devon

TITLE

Fig. 2: The cellars and ground-floor plans



AC archaeology

Devon Office

AC archaeology Ltd
Unit 4, Halthaies Workshops
Bradninch
Nr Exeter
Devon
EX5 4LQ

Telephone/Fax: 01392 882410

Wiltshire Office

AC archaeology Ltd
Manor Farm Stables
Chicklade
Hindon
Nr Salisbury
Wiltshire
SP3 5SU

Telephone: 01747 820581
Fax: 01747 820440

www.acarchaeology.co.uk