

# LAND AT WALL PARK ROAD, BRIXHAM, TORBAY, DEVON

Centred on NGR SX 93308 55936

Results of an Archaeological Excavation

Torbay Council Planning Permission Reference  
P/2013/0785/MPA (Condition 1)

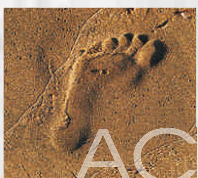
---

Prepared by:  
Alex Farnell

On behalf of:  
Northern Trust

Report No: ACD1367/3/0

Date: May 2016



AC archaeology

---

# Torbay Council Historic Environment Record

<b>Civil Parish:</b> Brixham	<b>National Grid Reference</b> Centred on SX93308 55936	<b>Number:</b>
<b>Subject:</b> Land at Wall Park Road, Brixham, Torbay, Devon: Results of an archaeological excavation		<b>Photo attached?</b> Yes
<b>Planning Application no:</b> P/2013/0785/MPA (Condition 1)	<b>Recipient museum:</b> N/A	
<b>OASIS ID:</b> 228824	<b>Museum Accession no:</b> N/A	
<b>Contractor's reference number/code:</b>  ACD1367	<b>Dates fieldwork undertaken:</b>  11th May 2016	
<p><b>Description of works.</b></p> <p><i>Introduction</i></p> <p>An archaeological investigation of an extant standing stone on land at Wall Park Road, Brixham, Devon (SX 93308 55936) was carried out by AC archaeology on 11th May 2016. The site was located in level pasture field to the south of the former Pontins holiday park and lay at approximately 55m aOD, with the underlying geology comprising of interbedded Limestone and Mudstone of the Berry Head member (BGS Online Viewer).</p> <p>The site was situated in an area that once contained extensive evidence for medieval strip fields and that within which a relict standing stone of uncertain date was positioned. A previous trial trench evaluation of the wider scheme had exposed limited evidence for possible Romano-British agricultural ditches as well as further medieval field boundaries or sub-divisions.</p> <p><i>Results</i></p> <p>An area measuring approximately 5m by 5m was excavated with a 0.75m buffer established around the stone. Topsoil and subsoil were removed by wheeled-machine fitted with a toothless bucket and under archaeological supervision. A segment of the buffer around the stone was then hand excavated up to the monument.</p> <p>Natural subsoil (context 102) was exposed at a depth of 0.6m below existing levels. This was overlain by 0.35m thick layer of reddish-brown sandy-clay subsoil (101) and 0.25m of dark grey-brown sandy-clay topsoil (100).</p> <p>The standing stone (105) measured 2.08m high, 0.65m wide and 0.18m deep and consisted of a wide flat slab of limestone that had been cut flat at either end. This was set within a pit (F103) that cut through subsoil layer 101. The pit was partially-exposed within the hand-excavated segment, where it was shown to measure 0.4m deep with steeply-sloping sides and a flattish base. Pit F103 contained a backfilled deposit that consisted of a mid brown sandy-clay loam with very rare sub-angular gravel and rare clinker or coke fragment inclusions.</p> <p>No further archaeological features or deposits were exposed and no finds were recovered.</p> <p><i>Comment</i></p> <p>The excavation has shown the standing stone to be set within a small pit that cut through an agricultural subsoil. This was dated during the previous trial trench evaluation to be of medieval or later date. The inclusion of clinker within the backfill of the pit suggests a post-medieval date for its insertion. It is therefore most likely that the standing stone was of post-medieval origin and perhaps functioned as a cattle rubbing stone.</p>		

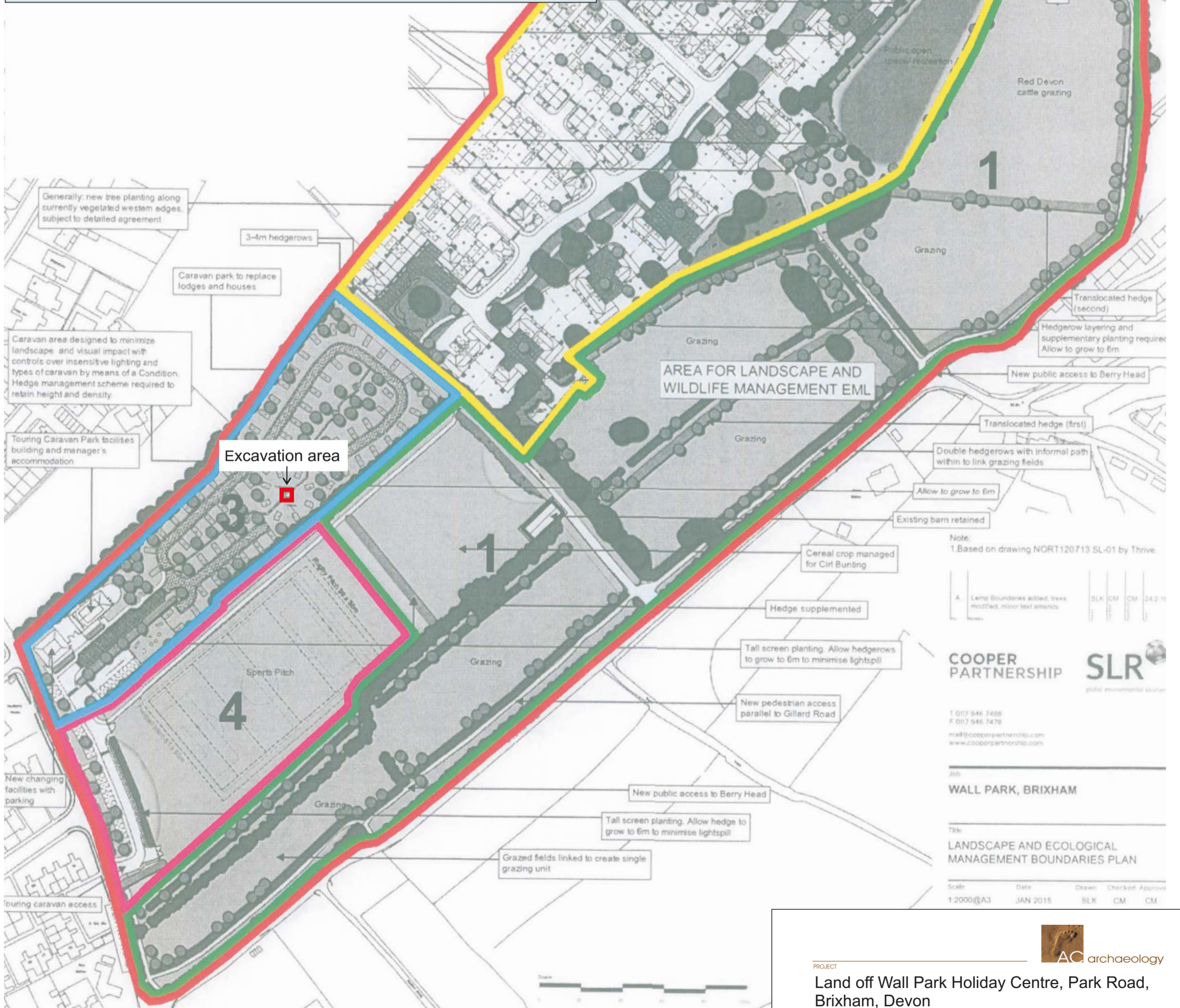
# Torbay Council Historic Environment Record

**Recorder:**

Alex Farnell, AC archaeology

**Date sent to HER:**

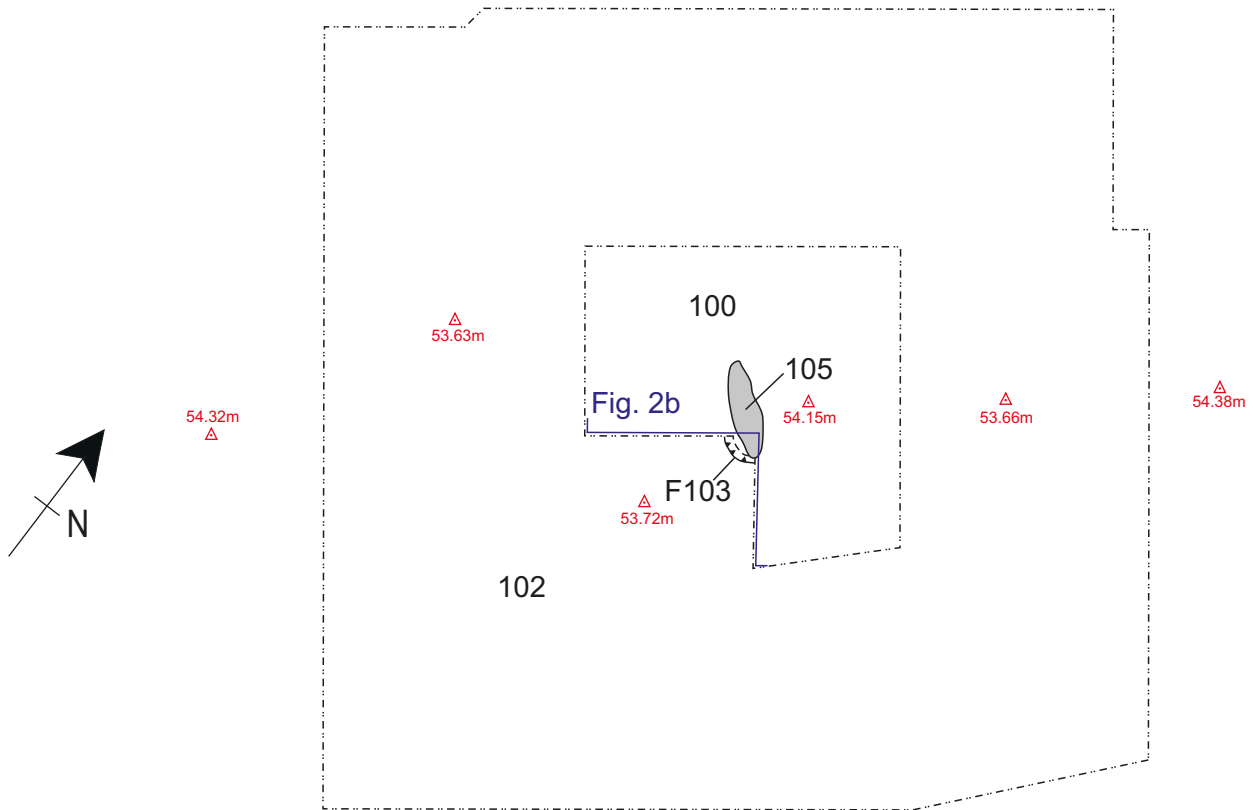
May 2016



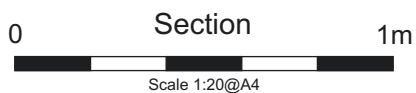
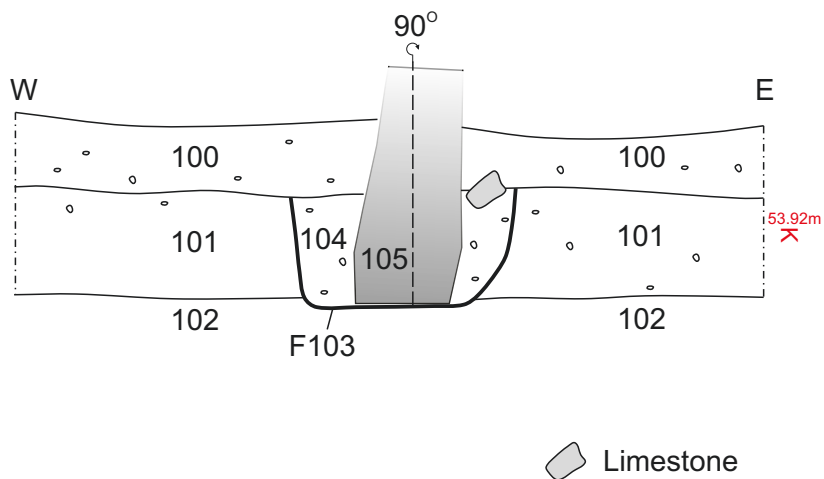
PROJECT  
Land off Wall Park Holiday Centre, Park Road, Brixham, Devon

TITLE  
Fig. 1: Site location showing excavation area

a) Plan of excavation area



b) Section of F103 and standing stone 105



PROJECT

Land off Wall Park Holiday Centre, Park Road, Brixham, Devon

TITLE

Fig. 2: Plan and section of excavation area



Plate 1: General view of excavation, looking north (scale 1m)



Plate 2: Southeast facing section of pit F103, looking northwest (scale 0.5m)

### Devon Office

AC archaeology Ltd  
Unit 4, Halthaies Workshops  
Bradninch  
Nr Exeter  
Devon  
EX5 4LQ

Telephone/Fax: 01392 882410

### Wiltshire Office

AC archaeology Ltd  
Manor Farm Stables  
Chicklade  
Hindon  
Nr Salisbury  
Wiltshire  
SP3 5SU

Telephone: 01747 820581

Fax: 01747 820440

[www.acarchaeology.co.uk](http://www.acarchaeology.co.uk)