

East Bredwick Farm, Kentisbury, Devon

(NGR SS 64017 43062)

Results of an archaeological watching brief

Exmoor National Park Authority planning reference
62/36/16/003

Prepared by:
Debra Costen

On behalf of:
Airband Community Internet Ltd

Document No: ACD1439/1/1

Date: August 2016



AC archaeology

Exmoor National Park Authority Historic Environment Record

Civil Parish & District: Kentisbury, Exmoor	National Grid Reference SS 64017 43062	Number:
Subject: East Bredwick Farm, Kentisbury, Devon; Results of an archaeological watching brief		Photo attached? Yes
Planning Application No: 62/36/16/003	Recipient museum: N/A	
OASIS ID: 260607	Museum Accession no: N/A	
Contractor's reference number/code: ACD1439	Dates fieldwork undertaken: 4 and 5 August 2016	
<p><i>Introduction</i></p> <p>An archaeological watching brief was undertaken by AC archaeology on behalf of Airband Community Internet Ltd during the excavation of cable trenches at East Bredwick Farm, Kentisbury. The archaeological investigations were required by the Exmoor National Park Authority due to the proximity of a Scheduled Monument and other non-designated heritage assets (see below).</p> <p>The trenches were located in two fields to the northwest of East Bredwick Farm, situated at variable heights of between 850-1050m aOD. The underlying geology comprises undifferentiated Middle Devonian mudstone, siltstone and sandstone (British Geological Survey website).</p> <p><i>Archaeological and Historical background</i></p> <p>The principal archaeological interest are the Kentisbury round barrows and camp located 300m to the north of the farm, which are designated as a Scheduled Monument (National Heritage List no. 1003870). These comprise three Bronze Age bowl barrows and an Iron Age univallate hillfort.</p> <p>The site is recorded on the 1840 Kentisbury tithe map of 1840 as one large plot of enclosed land described in the accompanying 1839 apportionment as 'Common Land', which must represent its former unenclosed use. By the 1st edition Ordnance Survey map of 1889, the fields are divided into the same configuration as the present day. Old quarries are recorded to the south and west of the camp (e.g. Exmoor National Park HER entries MDE20617 and 20614).</p> <p><i>Aim</i></p> <p>The aim of the watching brief was to observe, investigate, excavate and record any surviving below ground features, deposits and artefacts that would be exposed by the excavation of the cable trench.</p> <p><i>Results</i></p> <p>The monitored groundworks comprised the machine excavation of three lengths of cable trench totalling 850m long, with each measuring 300mm wide by 600mm deep. The route of the cable trench passed through two fields (Fig. 1). In trench 1 the deposit sequence comprised a 200mm thick layer of loose dark brown loam topsoil overlying 400mm of firm reddish-brown silty loam subsoil (Plates 1-2). The natural comprised weathered bedrock and pockets of grey clay.</p> <p>In trench 2 the same deposit sequence was exposed although the topsoil was greyer in colour and only 100mm thick, whilst the subsoil contained frequent small to medium angular stones and occasional large stones representing waste from quarrying (Plates 2-3). This material was present within the whole of the trench and was derived from post-quarrying ploughing rather than representing backfill of quarry pits.</p> <p>In trench 3 the same deposit sequence as trench 1 was present, although the subsoil was occasionally deeper and the natural was not encountered across the whole of the trench. The trench partially followed the line of an existing water pipe trench (Plates 5-6).</p>		

Exmoor National Park Authority Historic Environment Record

Comments

No archaeological features were exposed or finds recovered during the work. The subsoil in trench 2 contained stone derived from post-medieval quarrying that had been spread across the lower part of the field through subsequent ploughing.

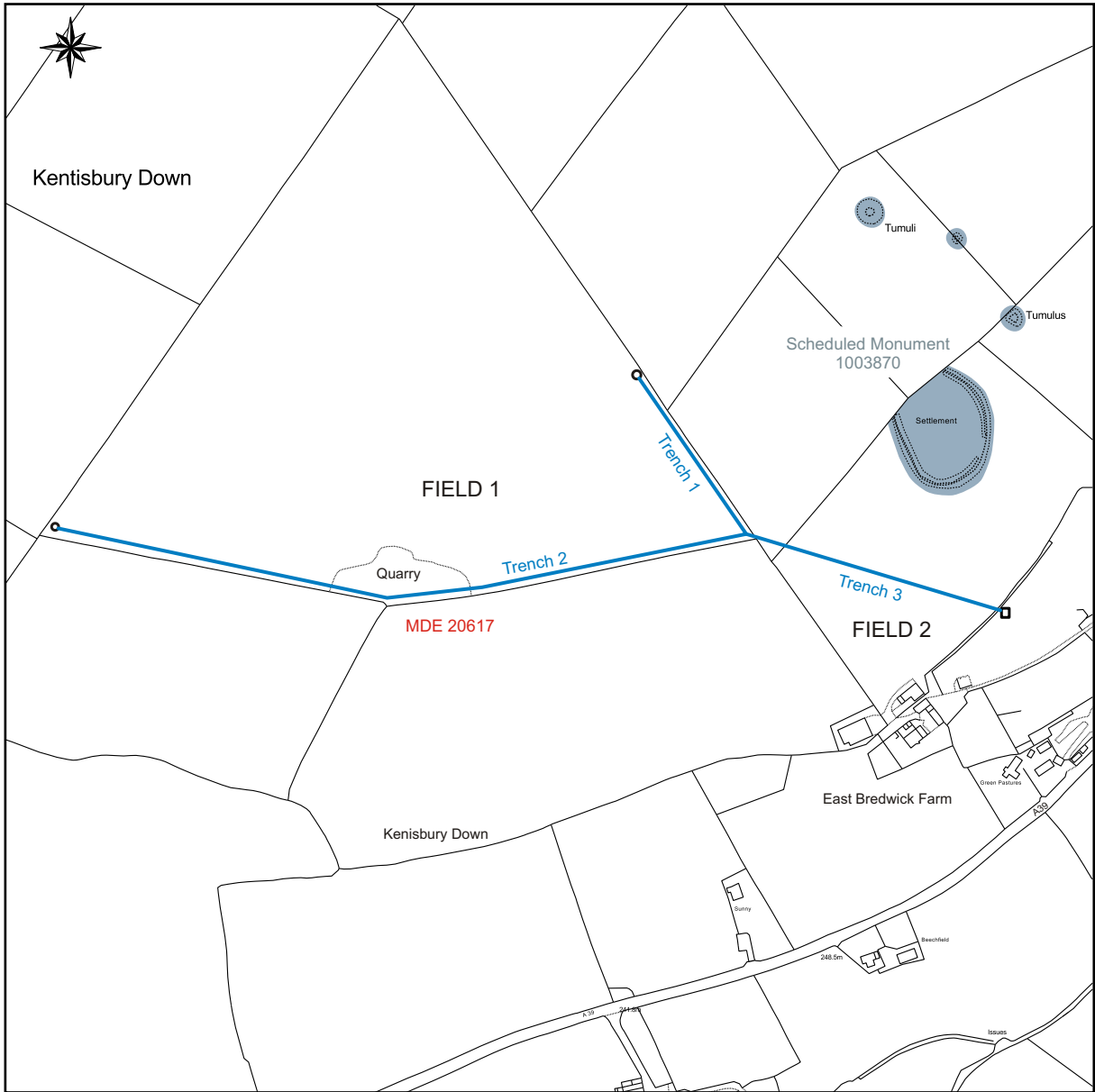
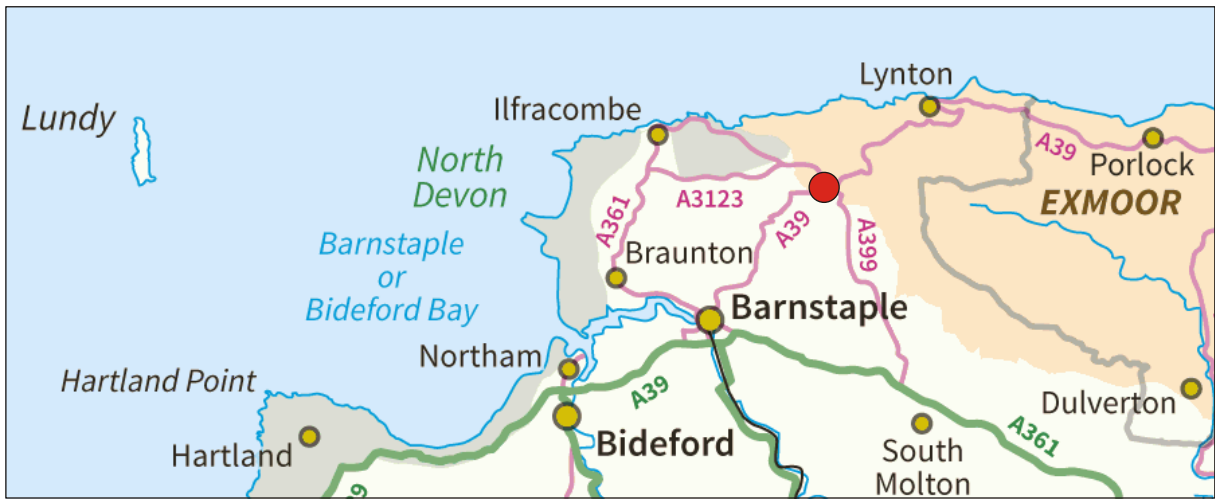
This report and the associated OASIS entry represent the archive for the project.

Recorders:

Debra Costen, AC archaeology

Date sent to HER:

19 August 2016



This Plan includes the following Licensed Data: OS MasterMap Black and White PDF Location Plan by the Ordnance Survey National Geographic Database and incorporating surveyed revision available at the date of production. Reproduction in whole or in part is prohibited without the prior permission of Ordnance Survey. The representation of a road, track or path is no evidence of a right of way. The representation of features, as lines is no evidence of a property boundary. © Crown copyright and database rights, 2016. Ordnance Survey 0100031673

0m 50m 100m 150m 200m 250m 300m 350m 400m

Plan supplied by the client

Key

— Excavated cable run (trenches 1-3)

PROJECT
Land at East Bredwick Farm, Kentisbury, Devon

TITLE

Fig. 1: Location of site and Trenches





Plate 1: Trench 1, field 1, looking south along the eastern boundary

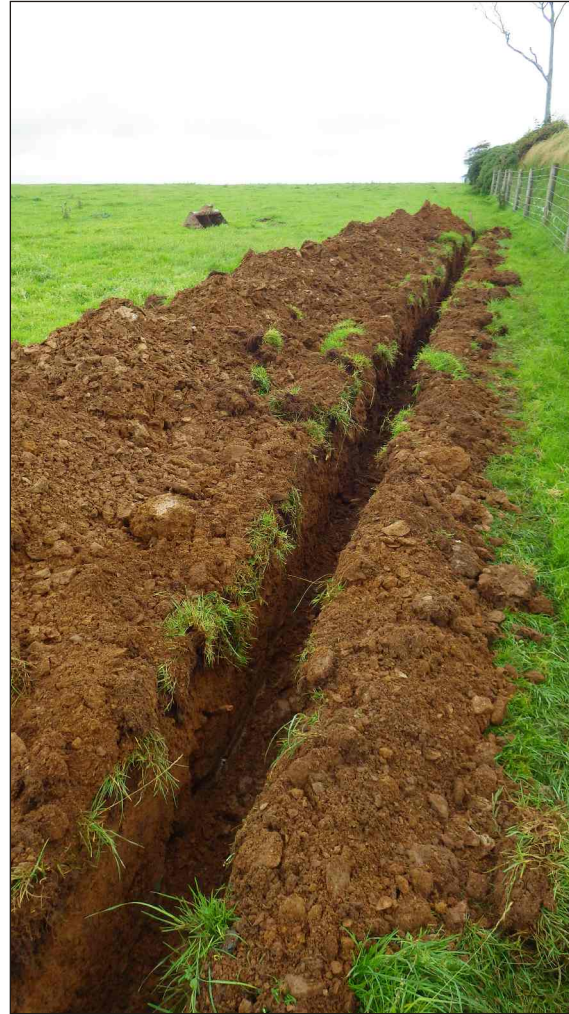


Plate 2: Trench 1, field 1, looking north along the eastern boundary



Plate 3: Trench 2, field 1, looking east along the southern boundary



Plate 4: Trench 2, showing stone waste within subsoil derived from quarrying in field 1, looking east along the southern boundary



Plate 5: Trench 3, field 2, looking east



Plate 6: Trench 3, field 2, showing water pipe, looking southeast

Devon Office

AC archaeology Ltd
Unit 4, Halthaies Workshops
Bradninch
Nr Exeter
Devon
EX5 4LQ

Telephone/Fax: 01392 882410

Wiltshire Office

AC archaeology Ltd
Manor Farm Stables
Chicklade
Hindon
Nr Salisbury
Wiltshire
SP3 5SU

Telephone: 01747 820581
Fax: 01747 820440

www.acarchaeology.co.uk