

POUND HOUSE, SHEEPWASH, DEVON

(NGR SS 48625 06335)

Results of an archaeological watching brief

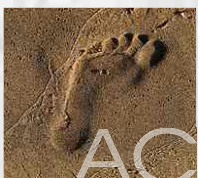
Torrige District Council planning reference 1/0335/2016/LBC,
condition 3

Prepared by:
Debra Costen

On behalf of:
Mr Derek Pooley

Document No: ACD1403/2/0

Date: September 2016



archaeology

Devon County Council Historic Environment Record

Civil Parish & District: Sheepwash, Torridge	National Grid Reference SS 48636 06396	Number:
Subject: Pound House, The Square, Sheepwash: Results of an archaeological watching brief		Photo attached? Yes
Listed Building Consent no: 1/0335/2016/LBC	Recipient museum: N/A	
OASIS ID: 261520	Museum Accession no: N/A	
Contractor's reference number/code: ACD1403	Dates fieldwork undertaken: 22nd July and 25th July 2016	
<p><i>Introduction (Fig. 1)</i> Archaeological monitoring and recording was undertaken by AC archaeology on behalf of Mr Derek Pooley during groundworks associated with the internal alterations to the Pound House, Sheepwash (Fig. 1). The property is a Grade II Listed early 19th-century house (National Heritage List number 1162749) located on the west side of The Square within the centre of the village. The recording was carried out in the rear range of the house, which along with the front range, is recorded on the 1839 parish tithe map.</p> <p><i>Aims and methodology</i> The groundworks had the potential to expose and destroy any surviving archaeological deposits and artefacts, in particular any evidence for historic floor surfaces under the present concrete floor. The aim of the watching brief was to observe, investigate, excavate and record any surviving below ground artefacts and deposits with particular reference to historic surfaces. The recording was undertaken following the removal of the 20th-century ground-floor partitions and during the removal of the concrete floor and underlying deposits down to the required formation level.</p> <p><i>Results (Fig. 2; Plates 1 and 2)</i> The concrete floor was present across the whole of the range and measured 260mm thick. This was removed along with underlying deposits/surfaces to a depth of 360-410mm from the surface. Adjacent to the west doorway the remains of a small irregularly shaped cobbled area was exposed under the concrete. This has formed an inner threshold to the doorway and was lined on all surviving original sides with rows of set cobbles. It incorporated a rebate for a (slate) threshold that had been replaced in concrete. Further to the east a larger expanse of cobbles survived under the concrete within the northern quarter of the range. The cobbles were variously laid, some on edge in rough rows, whilst others were bigger and set with larger faces exposed. It is possible that they had been extensively repaired and relaid. They measured 100m deep and were laid onto a make-up layer of compact dense dark brown and yellow brown clays with abundant gravel and demolished cob inclusions. A piece of blue transfer printed china, post-dating 1780, was recovered from this material.</p> <p>Underneath the remainder of the concrete was a mixed 20th-century levelling deposit of soft silty clay containing abundant stone fragments of varying sizes and rare red brick fragments. The natural substrate was not exposed anywhere within the building.</p> <p><i>Comments</i> The archaeological work has created a record of historic cobbled surfaces within the rear range of the building. No other archaeological features, deposits or finds were exposed. The date of the surface is unknown. The single sherd of probable 19th-century pottery from under the surface may provide a date although this could have been introduced during repairs. The Pound House is recorded as being of early 19th century date but the rear range has a complex architectural history, and could predate the house; on the basis of (infilled) slit vents and the low ceiling it may have been constructed as a cow house with hayloft above.</p> <p>This report and the associated OASIS entry represent the archive for the project.</p>		
Recorders: Debra Costen, AC archaeology		Date sent to HER: 1 September 2016



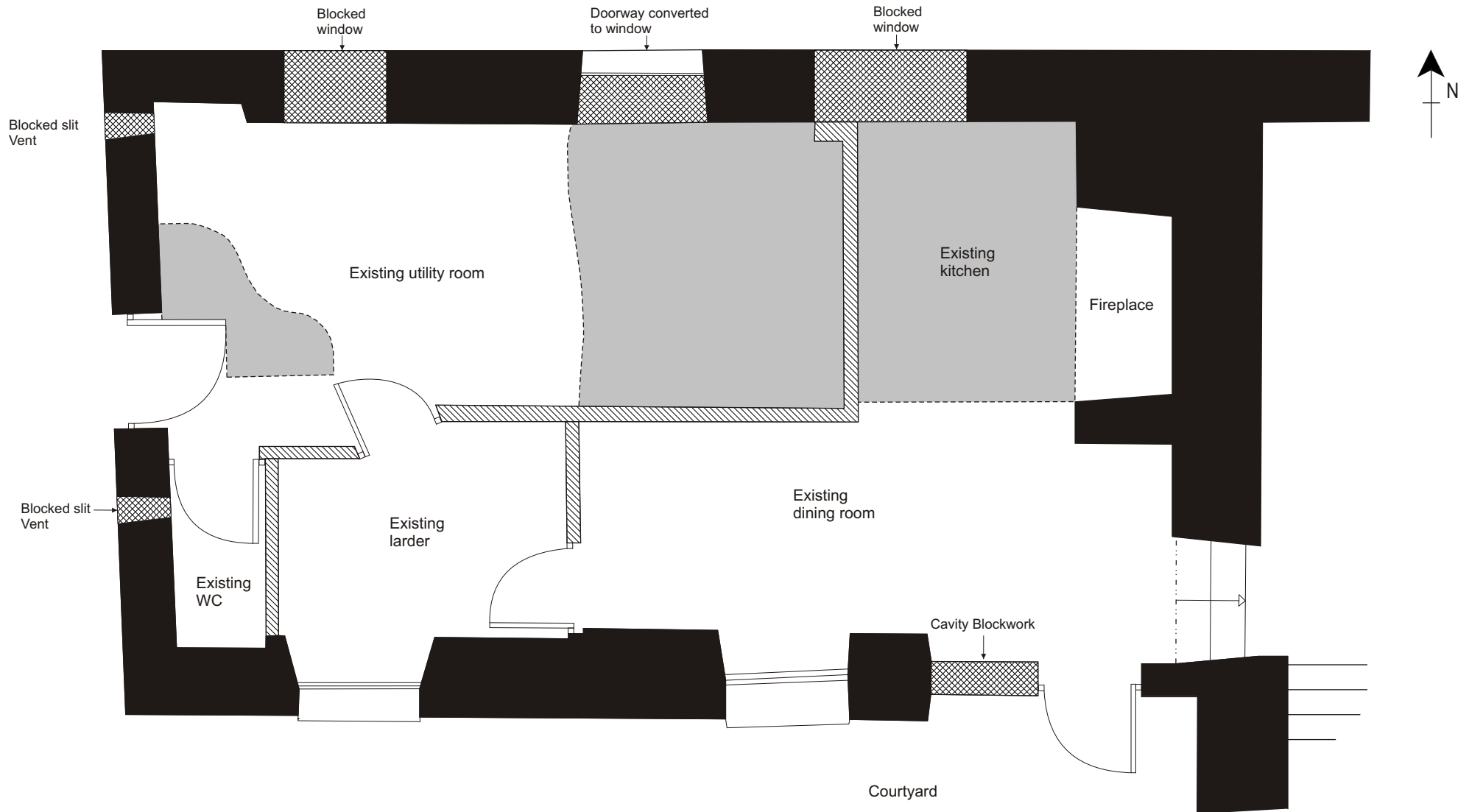
PROJECT





Pound House, Sheepwash, Devon

TITLE

Fig. 1: Site Location





Key	
	Cobbles
	Blocked openings
	Removed 20th century walls
	Cob and stone Walling

PROJECT
Pound House, Sheepwash, Devon

TITLE
Fig. 2: Plan of rear range





Plate 1: Cobbled surface inside the west doorway looking northeast. (scale 1m)



Plate 2: Cobbled surface in north half of the range looking east. (scale 2m)

Devon Office

AC archaeology Ltd
Unit 4, Halthaies Workshops
Bradninch
Nr Exeter
Devon
EX5 4LQ

Telephone/Fax: 01392 882410

Wiltshire Office

AC archaeology Ltd
Manor Farm Stables
Chicklade
Hindon
Nr Salisbury
Wiltshire
SP3 5SU

Telephone: 01747 820581
Fax: 01747 820440

www.acarchaeology.co.uk