

SOUTH GATE, LYDFORD, DEVON

(NGR SX 51151 84754)

Ringwork, castle, town banks, site of Saxon town and defences:
Scheduled Monument no. DV392 (National Heritage List no.
1002506)

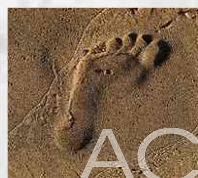
Results of an archaeological watching brief

Prepared by:
Debra Costen

On behalf of:
Western Power Distribution

Document No: ACD1416/2/0

Date: September 2016



AC archaeology

Dartmoor National Park Authority Historic Environment Record

Civil Parish & District: Lydford, West Devon	National Grid Reference SX 51151 84754	Number:
Subject: South Gate, Lydford: Results of an archaeological watching brief		Photo attached? Yes
Scheduled Monument Consent no: S00142561	Recipient museum: N/A	
OASIS ID: 262544	Museum Accession no: N/A	
Contractor's reference number/code: ACD1416	Dates fieldwork undertaken: 1st September and 8th September 2016	
<p><i>Introduction (Fig. 1; Plates 1-2)</i></p> <p>Archaeological monitoring and recording was undertaken by AC archaeology on behalf of Western Power Distribution during groundworks associated with the replacement of an overhead cable electricity pole at South Gate, Lydford. The pole is located within the Scheduled Monument (no. DV392; National Heritage List no. 1002506) encompassing the "Ringwork, castle, town banks, site of Saxon town and defences." The work was undertaken as a condition of Scheduled Monument Consent (reference S001425610), and guidance on the scope of the work was provided by the Historic England Assistant Inspector of Historic Monuments.</p> <p>The site is located within the eastern end of the historic village of Lydford, in the area of the settlement's defences, just inside the upstanding earthwork of the eastern rampart, and is situated at a height of approximately 210m aOD. The underlying geology comprises carboniferous Mudstone of the Lydford Formation (British Geological Survey online viewer 2016).</p> <p><i>Aims and methodology</i></p> <p>The groundworks had the potential to expose and destroy any surviving archaeological deposits and artefacts, in particular those associated with the historic settlement and its defences. The aim of the watching brief was to monitor the removal of the existing pole and the excavation of a new pit, and to excavate and record any archaeological deposits or features exposed. To avoid damage to the monument no machinery was brought onto the site and the new pit was dug by hand. The new electricity pole was brought onto the site by hand and raised without any mechanical equipment. The scope of works included provision for the replacement of the associated stay, but during the works it was decided that this would remain <i>in situ</i> and was not replaced.</p> <p>The works and archaeological investigations were carried out in accordance with the conditions of the grant of Scheduled Monument Consent and a written scheme of investigation prepared by AC archaeology (Passmore 2016).</p> <p><i>Results (Fig. 2; Plates 3-6)</i></p> <p>The monitored groundworks comprised the excavation of a pit for the new electricity cable pole. The pit was located immediately to the east of the existing pole and was undertaken by hand using a raptor and scissors. It measured 300mm diameter and was excavated to a depth of 1.5m from the surface. After removal of the turf and topsoil (100mm thick) the excavation was entirely through the packing material around the existing pole, which consisted of blue slate/mudstone in firm light brown-grey clay. The natural substrate was not exposed. Following erection of the new pole the excavated pit was then backfilled with the removed spoil and the turf replaced.</p> <p><i>Sources Consulted</i></p> <p>Newman, P., 2011, <i>The Field Archaeology of Dartmoor</i> (English Heritage)</p> <p>Passmore, A., 2016, <i>South Gate, Lydford, Devon, (NGR SX 51151 84754), Ringwork, castle, town banks, site of Saxon town and defences: Scheduled Monument no. DV392 (National Heritage List no. 1002506, Written Scheme of Investigation for an archaeological watching brief, AC archaeology document no. ACD1416/1/0</i></p> <p><i>Comments</i></p> <p>No archaeological features or deposits were exposed or finds recovered.</p>		

Dartmoor National Park Authority Historic Environment Record

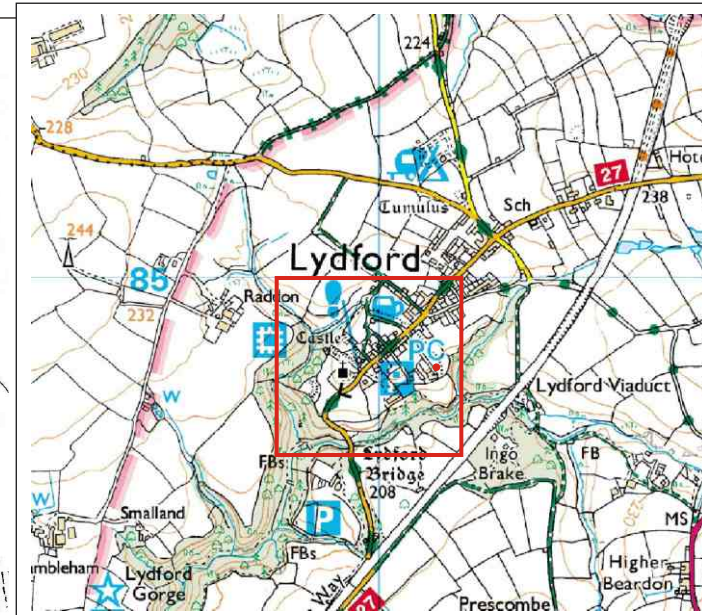
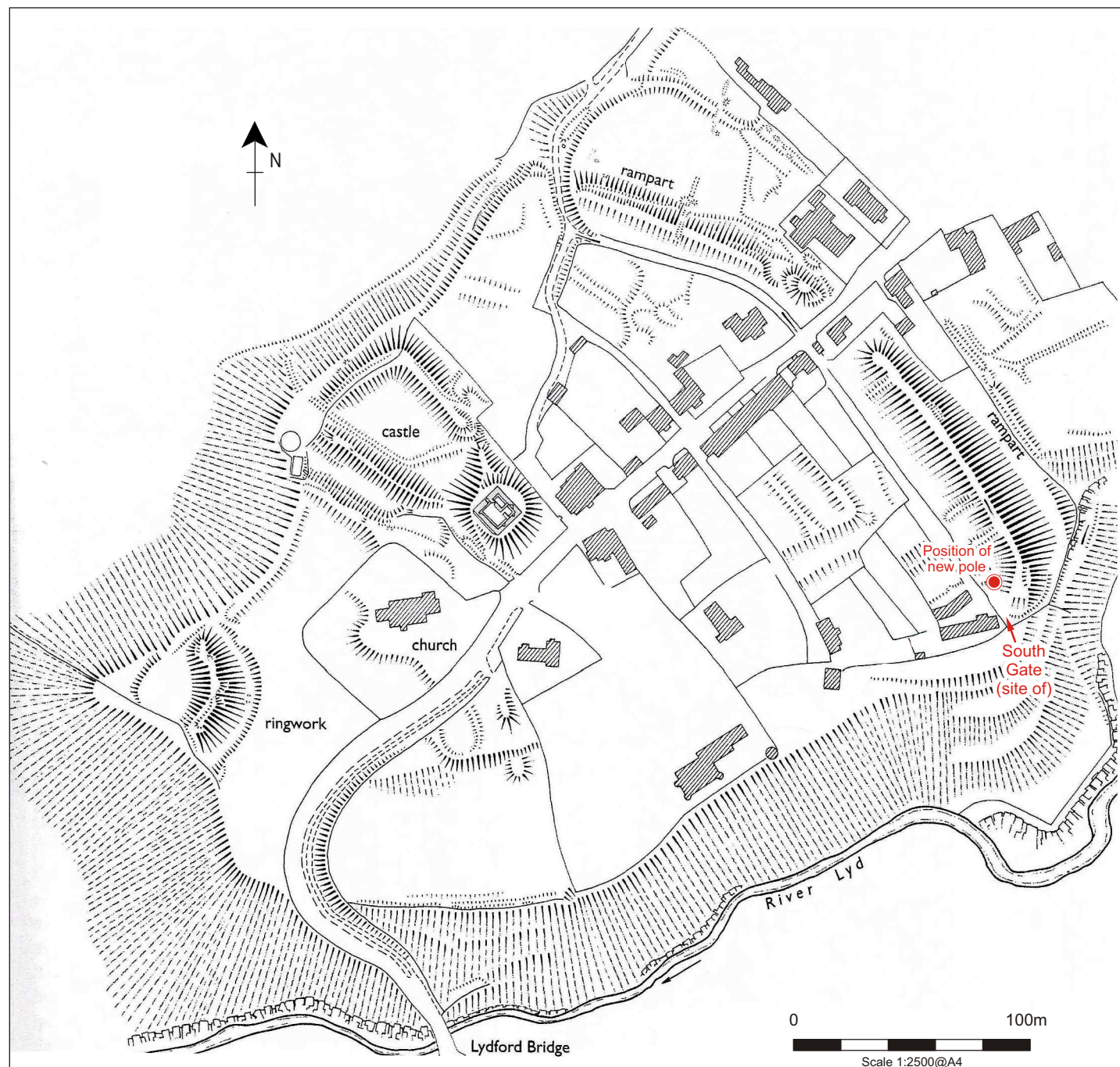
This report, the associated OASIS entry, and a CD of photographs provided to the Assistant Inspector of Historic Monuments, represent the archive for the project.

Recorders:

Debra Costen, AC archaeology

Date sent to HER:

15 September 2016



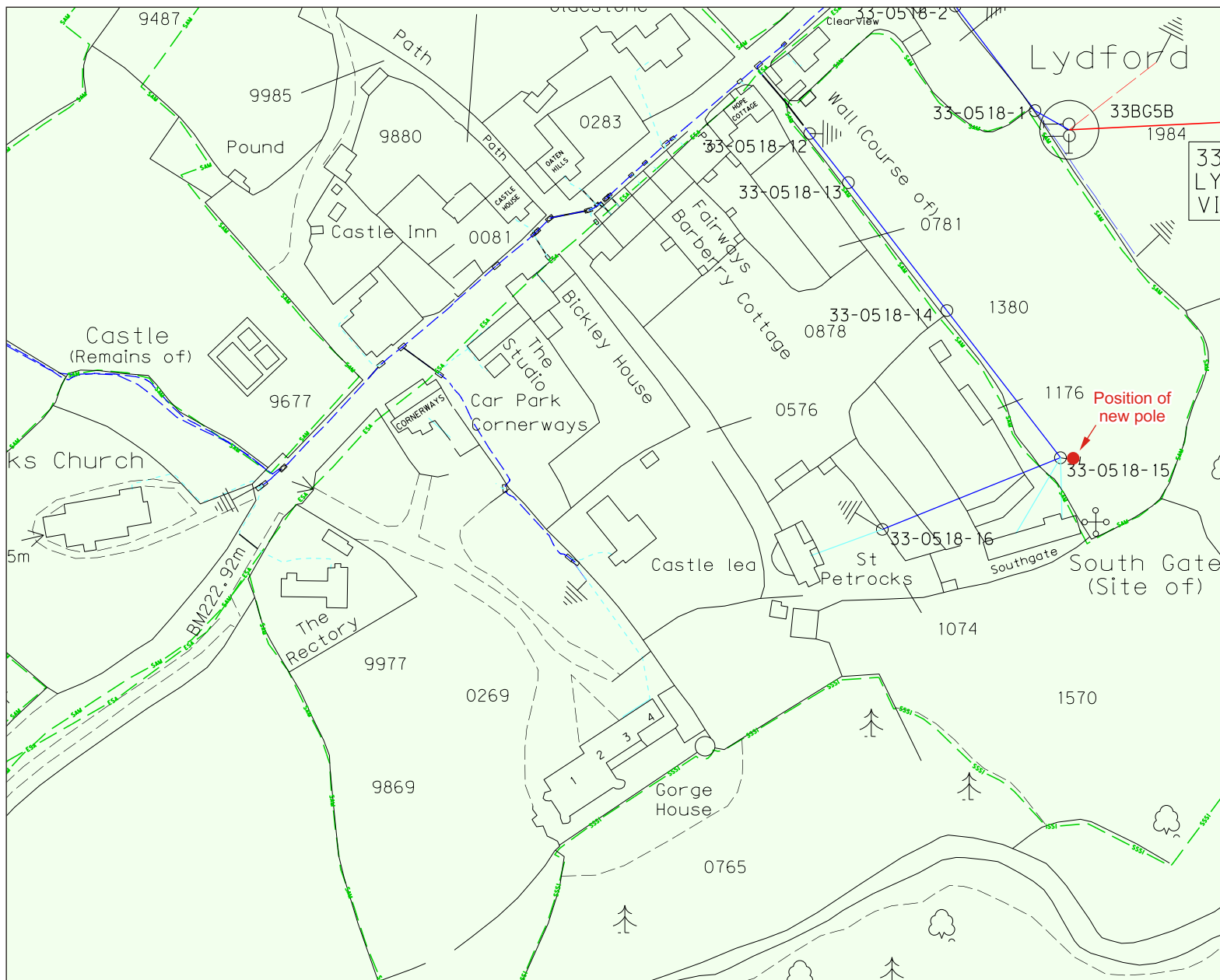
Ordnance Survey © Crown Copyright 2015. All rights reserved. Licence number 100022432

PROJECT

South Gate, Lydford, Devon

TITLE

Fig. 1: Location of plan and earthwork plan depicting the location of the work (after Newman 2011, Fig. 5.1)



Plan supplied by Western Power Distribution

0 100m
Scale 1:1500@A4

PROJECT

South Gate, Lydford, Devon

TITLE

Fig. 2: Location of existing pole and site of the replacement pole



AC archaeology



Plate 1: Existing pole prior to work commencing, showing the rampart of the defences to the right, view to the north



Plate 2: General view along the rampart, view to the north



Plate 3: Working shot showing the location of the new pole, with "South Gate" to the left, view to the west,



Plate 4: Working shot showing the location of the pit adjacent to the existing pole, view to the north



Plate 5: View of the excavated pit

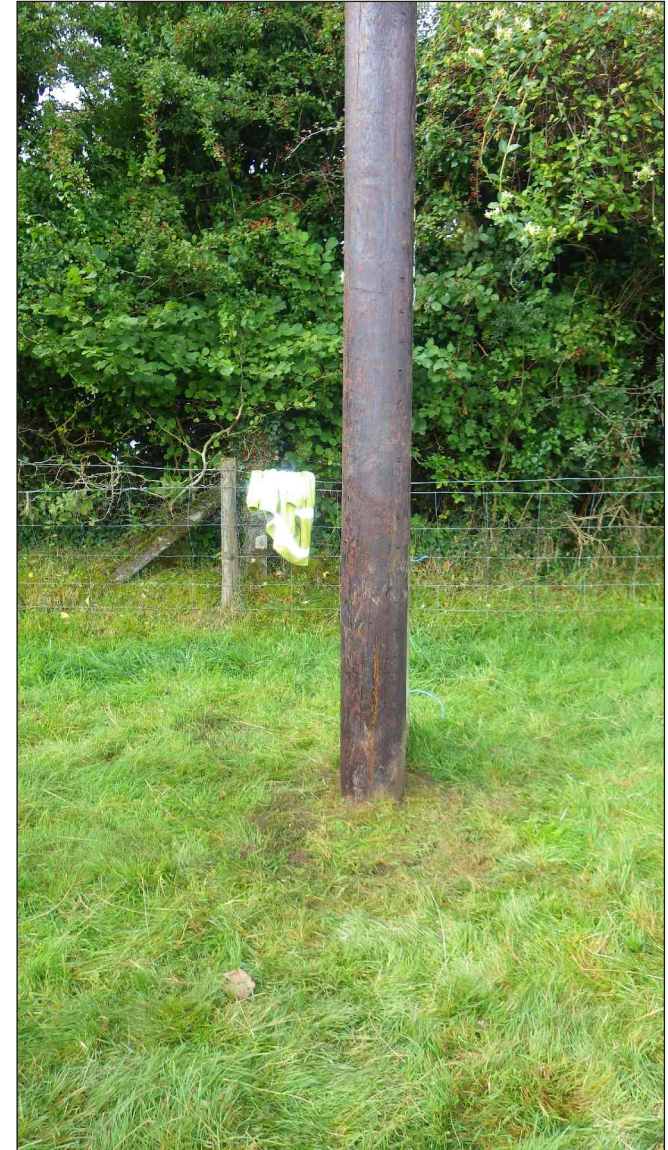


Plate 6: Completion of the work, view to the west

Devon Office

AC archaeology Ltd
Unit 4, Halthaies Workshops
Bradninch
Nr Exeter
Devon
EX5 4LQ

Telephone/Fax: 01392 882410

Wiltshire Office

AC archaeology Ltd
Manor Farm Stables
Chicklade
Hindon
Nr Salisbury
Wiltshire
SP3 5SU

Telephone: 01747 820581
Fax: 01747 820440

www.acarchaeology.co.uk