

LAND AT BLAKEMORE FARM, HARBERTON, TOTNES, DEVON

(NGR SX 7694 6014)

Results of an Archaeological Trench Evaluation

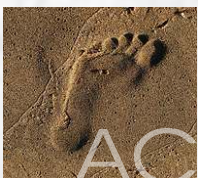
South Hams District Council Planning References
2299/18/FUL, 2300/18/FUL, 2301/18/FUL and 2302/18/FUL

Prepared by:
Simon Hughes

On behalf of:
A & L Farming

Report No: ACD1919/2/0

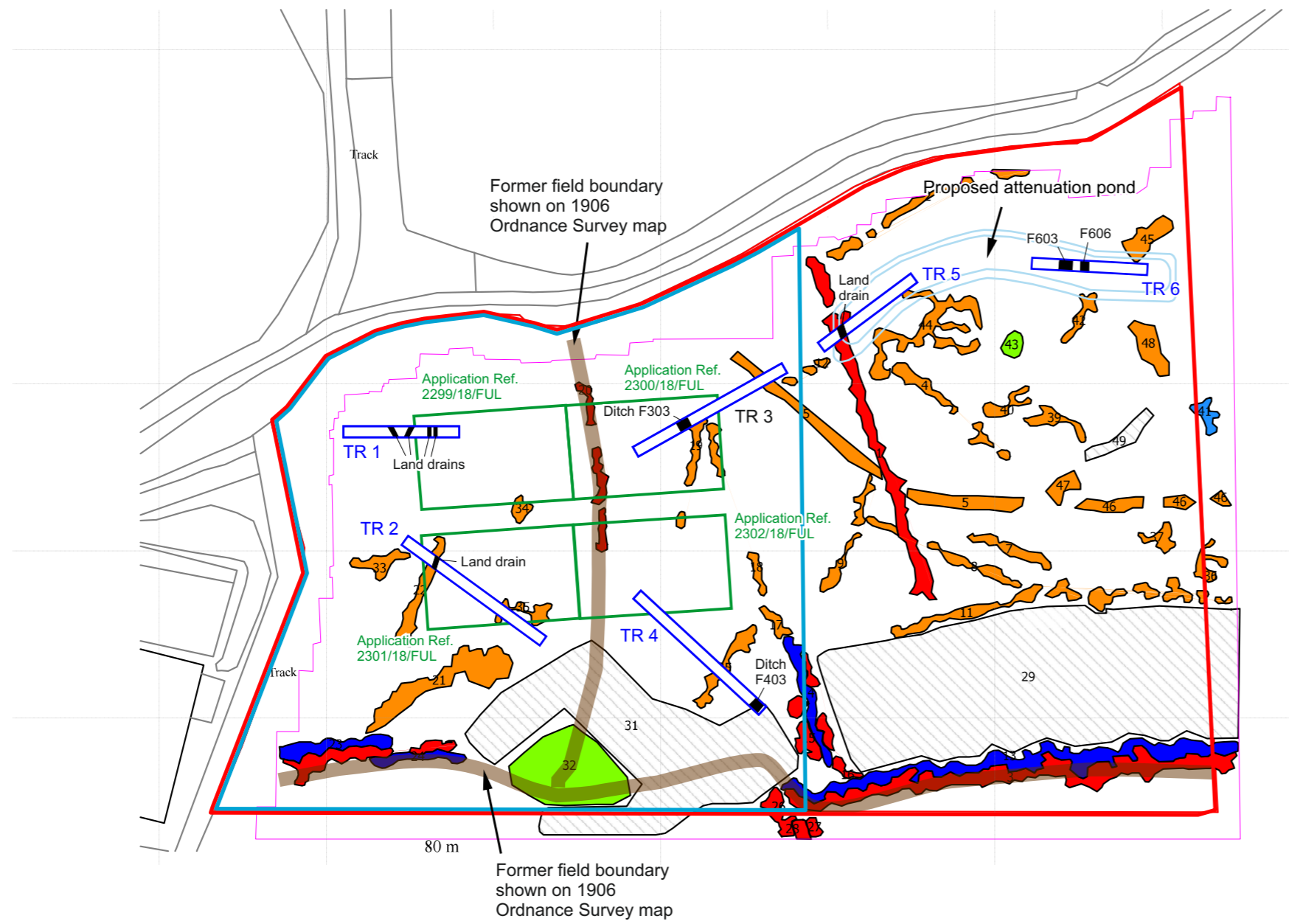
Date: December 2018



archaeology

Devon County Council Historic Environment Record

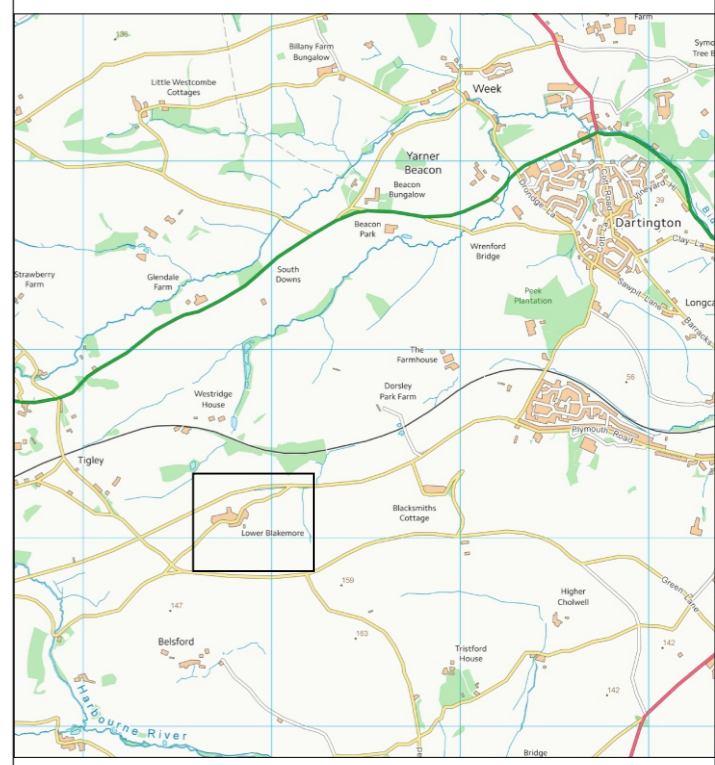
Civil Parish & District: Harberton, South Hams	National Grid Reference SX 7694 6014	Number:
Subject: Land at Blakemore Farm, Harberton, Totnes, Devon: Results of an archaeological trench evaluation		Photo attached Plates 1-4
Planning Application Nos: 2299/18/FUL, 2300/18/FUL, 2301/18/FUL and 2302/18/FUL	Recipient museum: N/A	
OASIS ID: 336326	Museum Accession no: N/A	
Contractor's reference number/code: ACD1919	Dates fieldwork undertaken: 12-13 November 2018	
<p>Introduction</p> <p>An archaeological evaluation was carried out by AC archaeology in advance of the construction of four agricultural buildings, with associated terrace and attenuation pond on land at Blakemore Farm, Harberton, Totnes, Devon (SX 7694 6014). The work comprised the machine-excavation of six trenches totalling 60m, with each trench 1.2m wide (Fig. 1). The trenches were positioned within the areas of proposed development to target anomalies and to test 'blank' areas interpreted from a previous geophysical survey.</p> <p>The site lies some 2.5km to the west of Totnes and 1.5km to the north of Harberton (Fig. 1). It comprises an approximately 1ha portion of a wider pasture field bounded to the north by a road leading to Blakemore Farm, which lies immediately to the east (Plate 1). The site is situated on ground that slopes gradually to the north between 84m and 78m aOD (above Ordnance Datum). Blakemore Farm has origins as a medieval settlement. It is named as '<i>Blakemor</i>' in a local inquiry of the property or '<i>Inquisitions post mortem</i>' dated 1300. Probable earlier activity in the immediate vicinity of the site consists of a possible prehistoric enclosure, which lies 180m to the south and has been interpreted from an aerial photograph. The 1842 Harberton parish tithe map depicts that the site was previously divided into two plots. This boundary was present on Ordnance Survey mapping until 1906.</p> <p>Results (Fig. 1, Plates 2-3)</p> <p>The underlying natural subsoil consisted of a light yellowish-red clay with gravels. This was exposed at depth that varied between 0.3m and 0.65m below existing levels. It was overlain by an intermittent light yellowish-red agricultural or colluvial subsoil, which was, in turn, sealed by a 0.3m thick dark brown silty-loam topsoil. Archaeological features were exposed in Trenches 3, 4 and 6 and consisted of a total of four ditches (F303, F403, F603 and F606) (Fig. 1). These are described below. In Trenches 1, 2 and 5, a small number of land drains were exposed, some of which corresponded with targeted linear anomalies interpreted from the geophysical survey. The land drain in Trench 3 was situated within a broad natural combe. No finds were recovered from the overlying soils.</p> <p>Trench 3 ditch F303 measured 2.1m wide and 0.11m deep with a shallow flat-based profile. Ditch F404 was exposed at a depth of 0.65m below a colluvial subsoil and topsoil. It measured 2m wide and 0.2m deep with gradually-sloping sides and a flat base. Both ditches contained similar mid reddish-brown silty-clay fills that were undated. Parallel ditches F603 and F606 were positioned 1.5m apart and represented the probable line of a former hedgebank boundary. The associated ditches measured 2.5m and 1.5m wide and 0.3m and 0.17m deep respectively. Both ditches had moderately-steep internal sides, gradually-sloping external sides and flat bases. The ditches contained undated clayey-loam accumulation fills. No evidence for surviving bank deposits were present between the two ditches.</p> <p>Comments</p> <p>The results from the trial trenching were largely negative, with no evidence for prehistoric or medieval occupation exposed on the site. A lack of finds from any of the trenches suggests that the site lay beyond the focus of the medieval farming settlement. The results of the geophysical survey were variable, with many of the anomalies found to relate to land drains or influenced by an undulating natural subsoil and resulting variable depths of colluvial subsoil.</p> <p>The ditches exposed in Trenches 3, 4 and 6 were all generally shallow and were likely to represent agricultural features; comprising a probable former hedgebank in Trench 6 and possible drains or plot sub-divisions in Trenches 3 and 4. Their absence on historic mapping suggests that they predate the 19th century. However, based on their form, the ditches were of probable medieval to post-medieval date and were likely to relate to the wider agricultural landscape around Blakemore Farm.</p>		
Recorder: Simon Hughes, AC Archaeology		Date sent to HER: December 2018



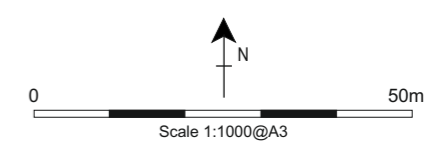
Based on drawing supplied by Substrata

Potential archaeology magnetometer survey		Key	
	Certainly, anomaly type (2)		Site boundary
	likely, positive		Extent of proposed terraced area
	likely, negative		Proposed agricultural buildings
	possible, positive		Trial trenches with archaeological features shown
	possible, negative		
	possible, enhanced		
	possible, dipole		
	Survey limits		
	Survey area		

Ordnance Survey © Crown Copyright 2015. All rights reserved. Licence number 100022432



Ordnance Survey © Crown Copyright 2015. All rights reserved. Licence number 100022432



PROJECT

AC archaeology

Land at Blakemore Farm, Harberton, Totnes, Devon

TITLE

Fig. 1: Location of site and development plan with results of geophysical survey and trial trenches shown

ACD1919_Blakemore Farm, Totnes_06-11-2018



Plate 1: General view of site looking east towards Blakemore Farm with Trench 6 in foreground



Plate 2: Trench 3, ditch F303, view to northwest (scale 1m)



Plate 3: Trench 4, ditch F403, view to southwest (scale 1m)



Plate 4: Trench 6, ditches F603 and F606, view to southwest (scale 1m)

Devon Office

AC archaeology Ltd
Unit 4, Halthaies Workshops
Bradninch
Nr Exeter
Devon
EX5 4LQ

Telephone: 01392 882410

Wiltshire Office

AC archaeology Ltd
Manor Farm Stables
Chicklade
Hindon
Nr Salisbury
Wiltshire
SP3 5SU

Telephone: 01747 820581

Fax: 01747 820440

www.acarchaeology.co.uk