

# LAND AT CURRYPOOL FARM, CURRYPOOL LANE, CANNINGTON, BRIDGWATER, SOMERSET

(NGR ST 2272 3846)

Results of Archaeological Monitoring and Recording

Sedgemoor District Council Planning Reference:  
45/18/00004

Somerset Historic Environment Record PRN 38948

Museum Accession Number TTNCM 48/2018

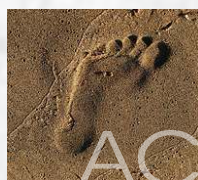
---

Prepared by:  
Simon Hughes

On behalf of:  
F. G. Jeanes and Son Ltd

Report No: ACD1830/2/0

Date: July 2019



archaeology

---

# LAND AT CURRYPOOL FARM, CURRYPOOL LANE, CANNINGTON, BRIDGWATER, SOMERSET

(NGR ST 2272 3846)

Results of archaeological monitoring and recording

Sedgemoor District Council planning ref 45/18/00004

Somerset Historic Environment Record PRN 38948

Museum accession number TTNCM 48/2018

---

Client	F.G.Jeanes and Son Ltd.
Report Number	ACD1830/2/0
Date	16 July 2019
Status	Version 1
Report Author(s)	Simon Hughes
Contribution by	-
Checked by	Paul Rainbird
Approved by	Simon Hughes

## Acknowledgements

The archaeological investigations were commissioned by F.G.Jeanes and Son Ltd. The site works were carried out by Chris Caine, with the illustrations prepared by Leon Cauchois. The advice and collaboration provided by Tanya James, South West Heritage Trust is duly acknowledged.

The views expressed in this report are those of AC archaeology and are presented in good faith on the basis of professional judgement and on information currently available.

## Copyright

AC archaeology Ltd shall retain full copyright of any report under the Copyright, Designs and Patents Act 1988 with all rights reserved, excepting that it hereby provides an exclusive licence to the Client for the use of the report by the Client in all matters directly relating to the project. Any document produced to meet planning requirements may be freely copied for planning, development control, education and research purposes without recourse to the Copyright owner subject to all due and appropriate acknowledgements being provided.

## CONTENTS

### *Summary*

1.	Introduction	1
2.	Archaeological background	1
3.	Aims	2
4.	Methodology	2
5.	Results	2
6.	Comments	2
7.	Archive and OASIS	2
8.	References	3

### **List of figures**

Fig. 1: Location of site and plan showing monitored trench

### **List of plates**

Plate 1: General working view of site looking southeast with L-shaped pond in foreground

Plate 2: Working view of groundworks, looking north

Plate 3: View of excavated trench, looking northwest

Plate 4: Showing representative section of excavated trench

## Summary

*Archaeological monitoring and recording on land at Currypool Farm, Currypool Lane, Cannington, Bridgwater, Somerset (ST 2272 3846) was undertaken by AC archaeology in April 2019 during drainage works associated with the conversion of a barn into holiday lets and a dwelling. Currypool Farm is thought to represent the site of a deserted medieval village and perhaps a moated manor.*

*Monitored groundworks comprised the excavation of a single trench for external drainage. This exposed a simple soil sequence overlaying natural gravels. No archaeological features or deposits were exposed, and no finds were recovered.*

### 1. INTRODUCTION

- 1.1 This document sets out the results of archaeological monitoring and recording (controlled watching brief) carried out during groundworks associated with the conversion of a barn into holiday lets and a dwelling on land at Currypool Farm, Currypool Lane, Cannington, Bridgwater, Somerset (ST 2272 3846). The work was required by Sedgemoor District Council as a condition of planning consent, following consultation with the South West Heritage Trust Senior Environment Officer.
- 1.2 Currypool Farm lies approximately 3km to the southwest of Cannington on land bounded by the A39 to the north and Currypool Lane to the east (Fig. 1). The site lies to the south of a stream, which feeds an L-shaped pond that bounds the farmhouse complex and barn. The converted barn is situated on the east side of the farm complex and comprised two stone-built ranges that formed an L-shaped arrangement. It is positioned on flat ground at 45m aOD (above Ordnance Datum), with the underlying solid geology comprising mudstone and halite-stone of the Mercia Mudstone Group beneath river terrace deposits of sand and gravels ([www.bgs.ac.uk](http://www.bgs.ac.uk)).

### 2. ARCHAEOLOGICAL BACKGROUND

- 2.1 The principal archaeological interest in the site's location is that Currypool Farm is thought to represent the site of a possible deserted medieval village (Somerset Historic Environment Record reference 10797). It is described in the Domesday Book of 1086 demonstrating its probable Saxon origins, while a 14th century document describes its inhabitants as totalling 19. The L-shaped pond, which lies immediately to the west of the barn and extends to the north and east of the current farmhouse, is considered to have the potential to represent two arms of a former moat (10211). If correct, then it would suggest that that position of a moated manor was located approximately on the site of the existing farmhouse. Nevertheless, Historic England state that there is currently no evidence to confirm this interpretation (Historic England National Inventory monument number 191085).
- 2.2 The Historic Environment Record list the presence of an undershot water wheel pit positioned within the L-shaped barn (10823). This would have presumably powered a mill fed from the pond to the west.
- 2.3 The 1838 Charlinch parish tithe map shows Currypool Farm with the farmhouse and L-shaped pond to the east. A northwest to southeast aligned range is shown in the location of the barn. By 1885, the First-Edition 25-inch Ordnance Survey Map depicts the barn as having its current L-shaped arrangement, which previously formed two sides of a rectangular arrangement bounding a small yard. To the west, two sluices are annotated on the L-shaped pond and to the south a probable leat is shown with

sluices and a weir. This system is likely to have been associated with the probable mill on the site.

### **3. AIMS**

- 3.1** The aim of the archaeological monitoring and recording was to preserve by record any archaeological features or deposits exposed during groundworks associated with the scheme. This was with particular reference for the potential for medieval and post-medieval activity to be on the site.

### **4. METHODOLOGY**

- 4.1** The work was undertaken in accordance with a project design prepared by AC archaeology (Hughes 2018), the South West Heritage Trust's *Somerset Archaeological Handbook* (2017) and with reference to the Chartered Institute for Archaeologists' guidelines, *Standards and Guidance for an Archaeological Watching Brief* (published 2014).
- 4.2** Monitored groundworks consisted of the machine-excavation of a 0.9m wide drainage trench located to the west of the barn (Fig 1).

### **5. RESULTS (Fig. 1; Plates 1-4)**

- 5.1** The drainage trench extended along the west side of the barn and was excavated to a depth of 0.65m below existing levels (Plates 1-3). Natural subsoil, which consisted of abundant gravels in a mid red sandy-loam matrix was exposed at a depth of 0.3m below existing levels (Plate 4). It was overlain by a mid brownish-red sandy-loam subsoil, which was 0.2m thick. This was sealed by a mid brown silty-loam topsoil.
- 5.2** No archaeological features or deposits were exposed by the work and no finds were recovered.

### **6. COMMENTS**

- 6.1** The groundworks exposed a simple sequence of topsoil and subsoil overlying the natural subsoil. Despite the location of the site as potentially within a possible deserted medieval village, the limited groundworks did not exposed any evidence for earlier settlement.

### **7. ARCHIVE AND OASIS**

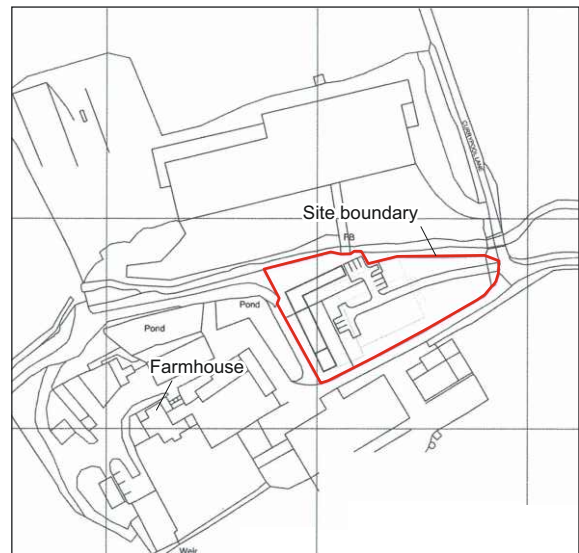
- 7.1** The paper and digital archive is currently held at the offices of AC archaeology Ltd, at 4 Halthaies Workshops, Bradninch, near Exeter, Devon, EX5 4LQ. This will be offered for deposition under museum accession number **TTNCM 10/2017** at the Somerset Heritage Centre, Taunton.
- 7.2** An online OASIS entry has been completed, using the unique identifier 363175, which includes a digital copy of this report.

## 8. REFERENCES

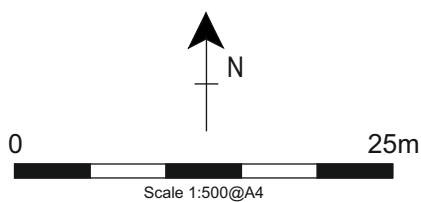
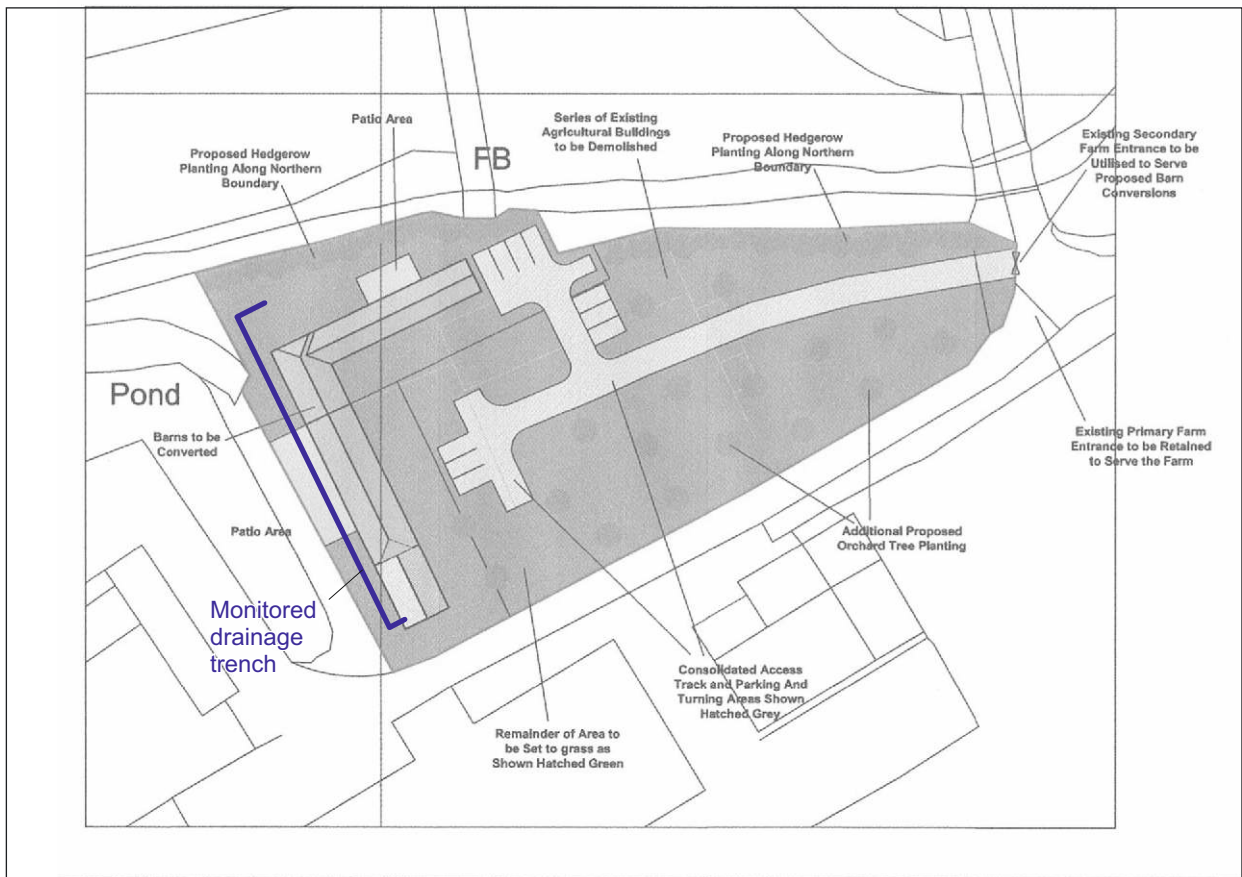
British Geological Survey Online Viewer.  
<http://mapapps.bgs.ac.uk/geologyofbritain/home.html>

Chartered Institute for Archaeologists, 2014. *Standard and guidance for an archaeological watching brief*. Professional guidance

Hughes, S., 2017, *Land at Currypool Farm, Currypool Lane, Cannington, Bridgwater, Somerset: Project Design for archaeological monitoring and recording*. Unpublished AC archaeology document, ref. ACD1830/1/1



Ordnance Survey © Crown Copyright 2015. All rights reserved. Licence number 100022432



PROJECT

Land at Curry Pool Farm, Curry Pool Lane, Cannington, Bridgewater, Somerset

TITLE

Fig. 1: Location of site and plan showing monitored trench





Plate 1: General working view of site looking southeast with L-shaped pond in foreground



Plate 2: Working view of groundworks, looking north





Plate 3: View of excavated trench, looking northwest (scale 1m)



Plate 4: Showing representative section of excavated trench (scale 1m)

### Devon Office

AC archaeology Ltd  
Unit 4, Halthaies Workshops  
Bradninch  
Nr Exeter  
Devon  
EX5 4LQ

Telephone: 01392 882410

### Wiltshire Office

AC archaeology Ltd  
Manor Farm Stables  
Chicklade  
Hindon  
Nr Salisbury  
Wiltshire  
SP3 5SU

Telephone: 01747 820581

Fax: 01747 820440

[www.acarchaeology.co.uk](http://www.acarchaeology.co.uk)