

# LAND SOUTH OF ROSEMOUNT, EAST STREET, IPPLEPEN, DEVON

(NGR SX 8395 6672)

## Results of Archaeological Monitoring and Recording

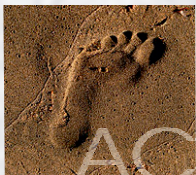
Teignbridge District Council Planning References  
17/01859/OUT (condition 9) and 19/02272/REM  
(condition 2)

---

Prepared by:  
Simon Hughes

Report No: ACD2310/2/0

Date: May 2021



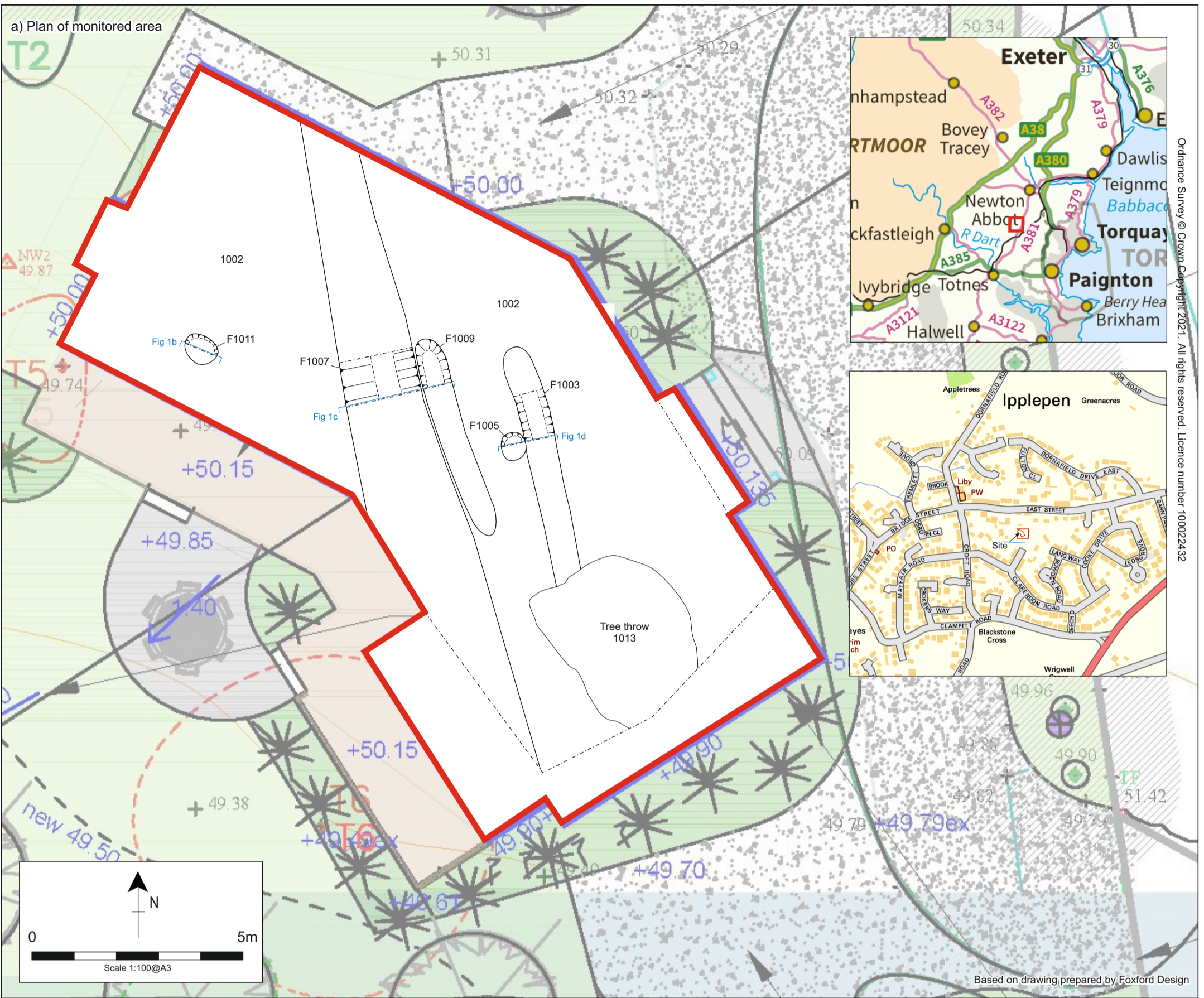
archaeology

---

# Devon County Council Historic Environment Record

<b>Civil Parish &amp; District:</b> Ipplepen, Teignbridge	<b>National Grid Reference</b> SX 8395 6672	<b>Number:</b> (Leave blank for HES to fill in)
<b>Subject:</b> Land south of Rosemount, East Street, Ipplepen, Devon: Results of archaeological monitoring and recording		<b>Photo attached?</b> Plates 1-2
<b>Planning Application no:</b> 17/01859/OUT and 19/02272/REM	<b>Recipient museum:</b> N/A	
<b>OASIS ID:</b> 398678	<b>Museum Accession no:</b> N/A	
<b>Contractor's reference number/code:</b>  ACD2310	<b>Dates fieldwork undertaken:</b>  26 January 2021	
<p><b>Introduction</b></p> <p>Archaeological monitoring and recording during groundworks associated with the construction of a new dwelling and associated access was undertaken by AC archaeology on land south of Rosemount, East Street, Ipplepen (SX 8395 6672). The site lies close to the centre of Ipplepen and comprises what was the associated garden area of Rosemount house, which fronts East Street to the north (Fig. 1). It is situated on flat ground at around 66m aOD.</p> <p>The site lies at the edge of the historic core of Ipplepen. Rosemount house to the north is Grade-II listed and comprises a large two storey house dating to around 1840 (Plate 1). Earlier activity dating from the Romano British period has been recently recorded in the area around the nearby Crosslands some 600m to the southeast. Here Exeter University have investigated settlement in an extensive area associated with a Roman road. Further evidence for Romano-British activity comprising pits containing pottery and a bronze brooch has been recorded 500m to the west ahead of development phases at the Ipplepen Health Centre. The 1842 Ipplepen parish tithe map depicts the (presumably) recently completed Rosemount house, with the site located to the south occupying part of a plot named as '<i>Back Orchard</i>' in the accompanying tithe apportionment.</p> <p><b>Results</b> (Fig. 1; Plates 1-2)</p> <p>Monitored groundworks comprised the bulk reduction of the footprint of the new dwelling using a tracked machine fitted with a toothless grading bucket (Plate 1). Natural subsoil (context 1002), which consisted of a weathered slate in a light greyish yellow clay matrix, was exposed at a depth of 0.4m beneath subsoil and garden soil layers (1001 and 1000 respectively). A total of five archaeological features were exposed by the groundworks. These consisted of three approximately north to south aligned shallow ditches (F1003, F1007 and F1009) and two small pits or possible postholes (F1005 and F1011). Small pit or possible posthole F1003 was cut into the fill (1004) of ditch F1003. A tree throw pit (1013) was also exposed in the southeast extent of the site, with this cutting into ditch F1003. A sherd of pottery from a 17th/18th century South Somerset-type jug was recovered from ditch F1003 and a sherd of Roman pottery comprising a footing of a Standard Lezoux samian ware bowl, likely to date from c. AD 120-200, was recovered from tree throw 1013.</p> <p><b>Comments</b></p> <p>The recovery of the 17/18th century pottery sherd from ditch F1003 and its common alignment with the other ditches (F1007 and F1009) suggest that they are all likely to date from the post-medieval period and represent phases of a former boundary extending back from East Street to the north. Pit F1005 was also likely to be of post-medieval or later date based on its relationship as cutting into the edge of ditch F1003. Pit or possible posthole F1011 was also undated but perhaps of a similar date to the other activity present. The recovery of the Roman pottery from the modern tree throw feature represents a residual find. Nevertheless, it reflects and provides additional indication of Roman occupation in Ipplepen.</p> <p>This report comprises the archive for the project.</p>		
<b>Recorder:</b>  Simon Hughes, AC archaeology	<b>Date sent to HER:</b>  14 May 2021	

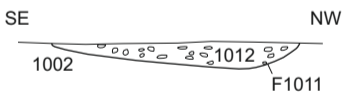
a) Plan of monitored area



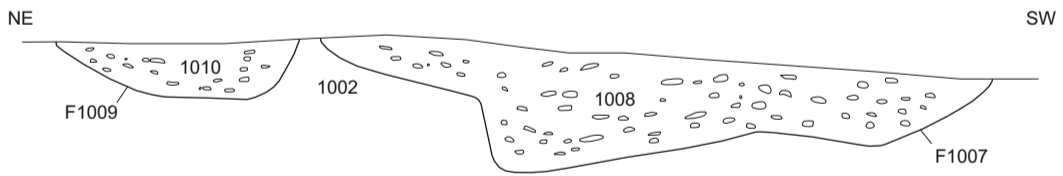
Ordnance Survey © Crown Copyright 2021. All rights reserved. Licence number 100022432

Based on drawing prepared by Foxford Design

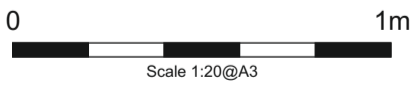
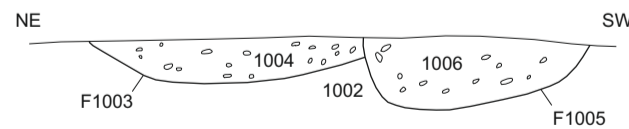
b) Section of pit F1011



c) Section of ditch F1007 and gully F1009



d) Section of gully F1003 and posthole F1005



PROJECT  
Land south of Rosemount, East Street,  
Ipplepen, Devon

Fig. 1: Site location, plan of monitored area and sections



Plate 1: General view of the site, work in progress, looking northwest with Rosemount behind



Plate 2: Ditch F1007, looking north (1m scale)

### Devon Office

AC archaeology Ltd  
Unit 4, Halthaies Workshops  
Bradninch  
Nr Exeter  
Devon  
EX5 4LQ

Telephone/Fax: 01392 882410

### Wiltshire Office

AC archaeology Ltd  
Manor Farm Stables  
Chicklade  
Hindon  
Nr Salisbury  
Wiltshire  
SP3 5SU

Telephone: 01747 820581

Fax: 01747 820440

[www.acarchaeology.co.uk](http://www.acarchaeology.co.uk)