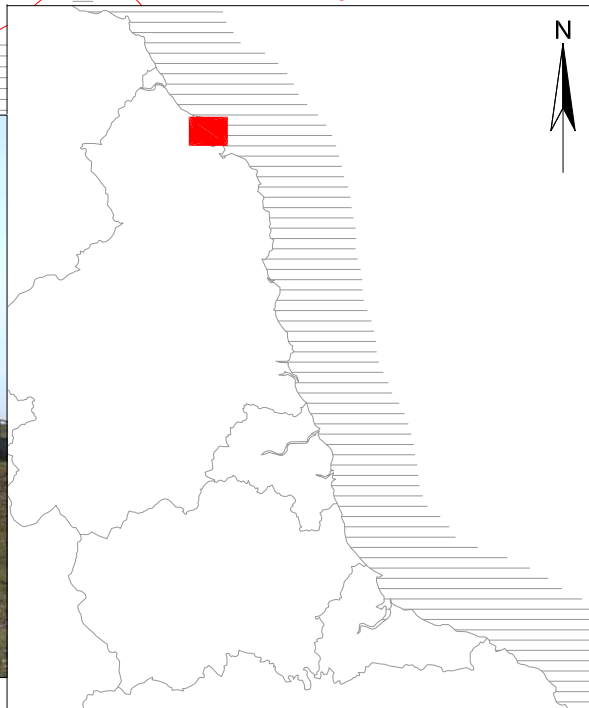
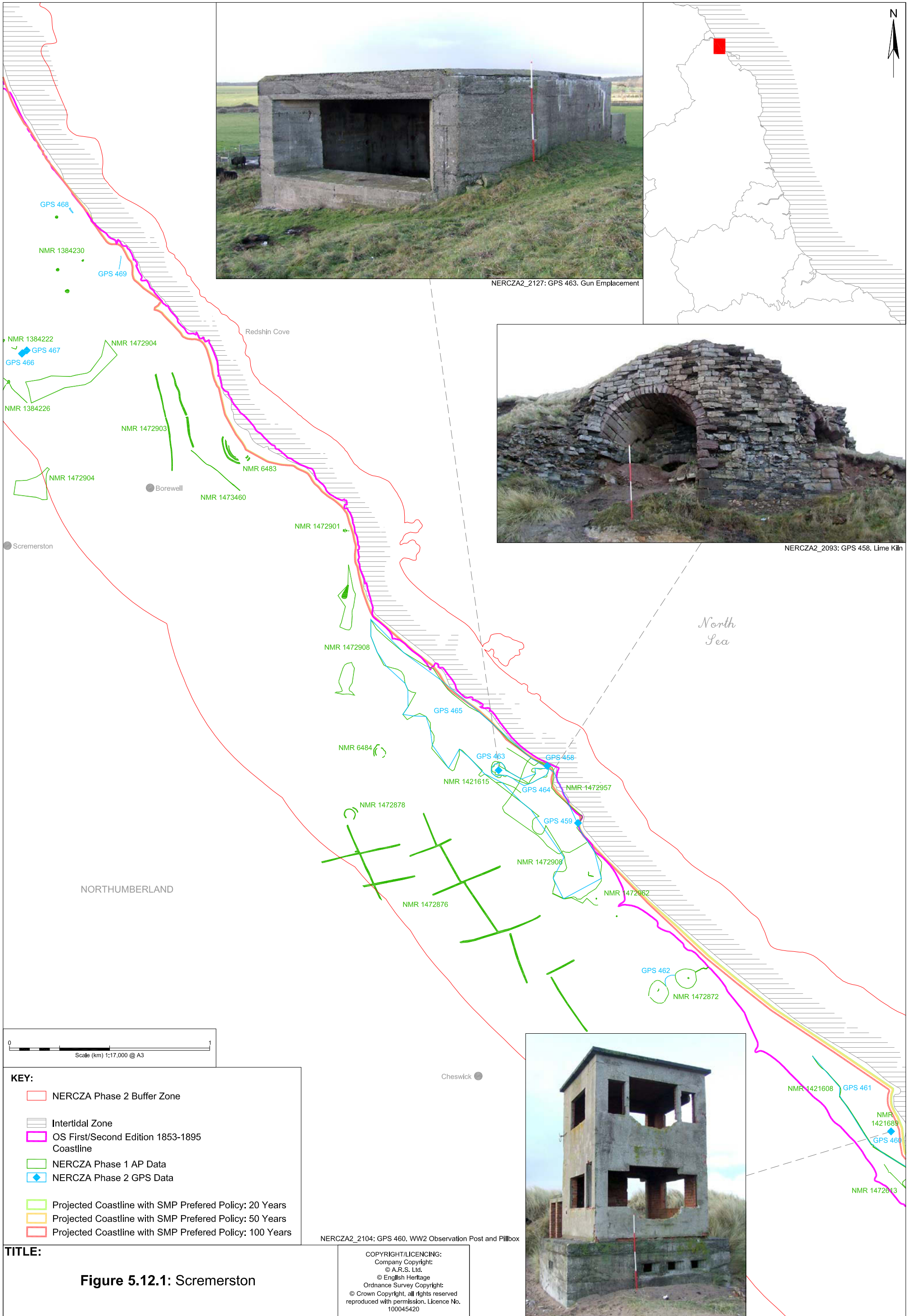


- KEY:**
- NERCZA Phase 2 Buffer Zone
 - Intertidal Zone
 - OS First/Second Edition 1853-1895 Coastline
 - NERCZA Phase 1 AP Data
 - ◆ NERCZA Phase 2 GPS Data
 - Projected Coastline with SMP Preferred Policy: 20 Years
 - Projected Coastline with SMP Preferred Policy: 50 Years
 - Projected Coastline with SMP Preferred Policy: 100 Years

TITLE:
Figure 5.14.1: Fenham and Holy Island (Including Ness End)

COPYRIGHT/LICENCING:
 Company Copyright:
 © A.R.S. Ltd.
 © English Heritage
 Ordnance Survey Copyright:
 © Crown Copyright, all rights reserved
 reproduced with permission. Licence No.
 100045420





0 1
Scale (km) 1:17,000 @ A3

- KEY:**
- NERCZA Phase 2 Buffer Zone
 - Intertidal Zone
 - OS First/Second Edition 1853-1895 Coastline
 - NERCZA Phase 1 AP Data
 - NERCZA Phase 2 GPS Data
 - Projected Coastline with SMP Preferred Policy: 20 Years
 - Projected Coastline with SMP Preferred Policy: 50 Years
 - Projected Coastline with SMP Preferred Policy: 100 Years

TITLE:
Figure 5.12.1: Scremerston

COPYRIGHT/LICENCING:
Company Copyright:
© A.R.S. Ltd.
© English Heritage
Ordnance Survey Copyright:
© Crown Copyright, all rights reserved
reproduced with permission. Licence No.
100045420

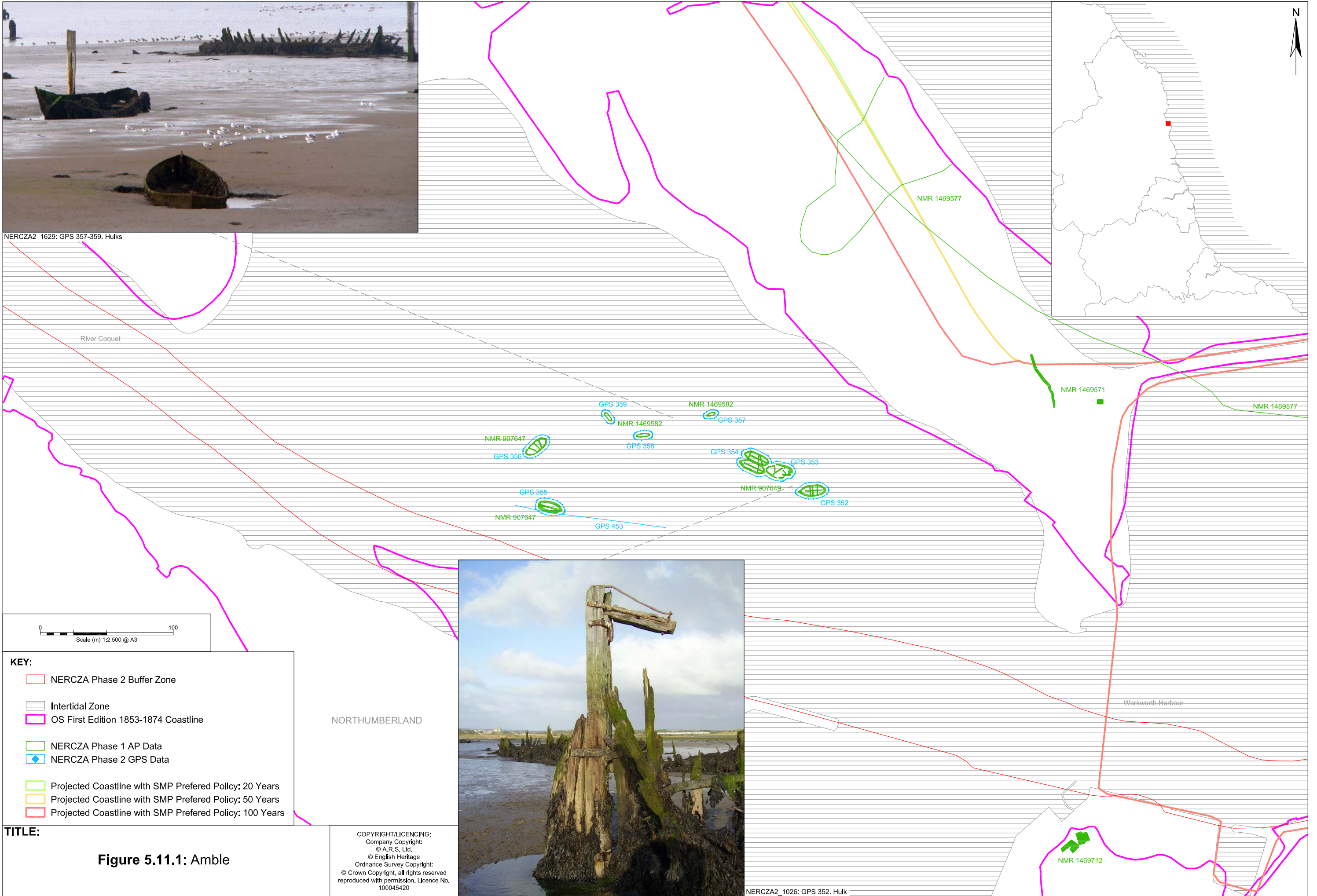
NERCZA2_2127: GPS 463. Gun Emplacement

NERCZA2_2093: GPS 458. Lime Kiln

NERCZA2_2104: GPS 460. WW2 Observation Post and Pillbox



NERCZA2_1629: GPS 357-359. Hulks



0 100
Scale (m) 1:2,500 @ A3

KEY:

- NERCZA Phase 2 Buffer Zone
- Intertidal Zone
- OS First Edition 1853-1874 Coastline
- NERCZA Phase 1 AP Data
- ◆ NERCZA Phase 2 GPS Data
- Projected Coastline with SMP Preferred Policy: 20 Years
- Projected Coastline with SMP Preferred Policy: 50 Years
- Projected Coastline with SMP Preferred Policy: 100 Years

NORTHUMBERLAND

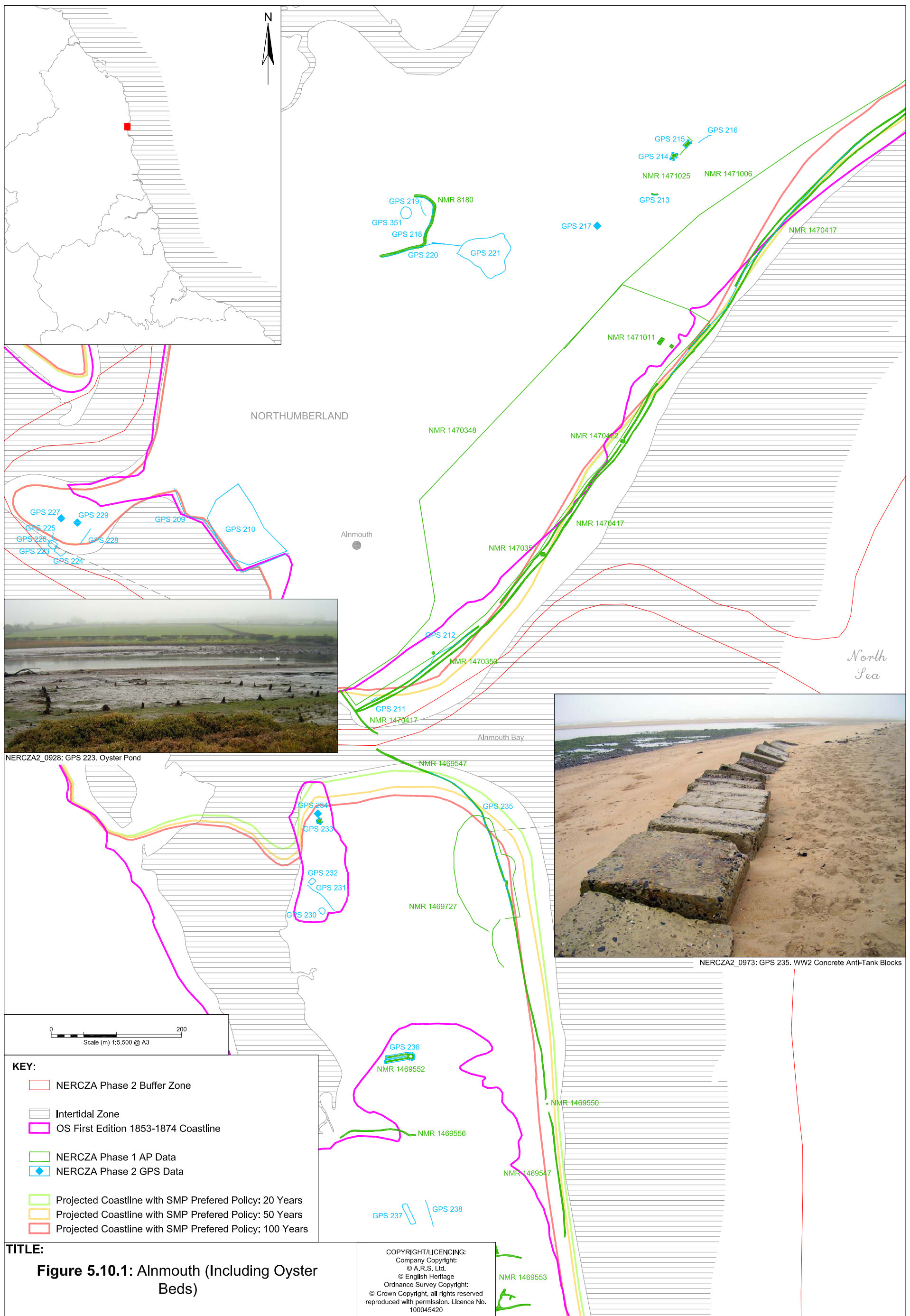


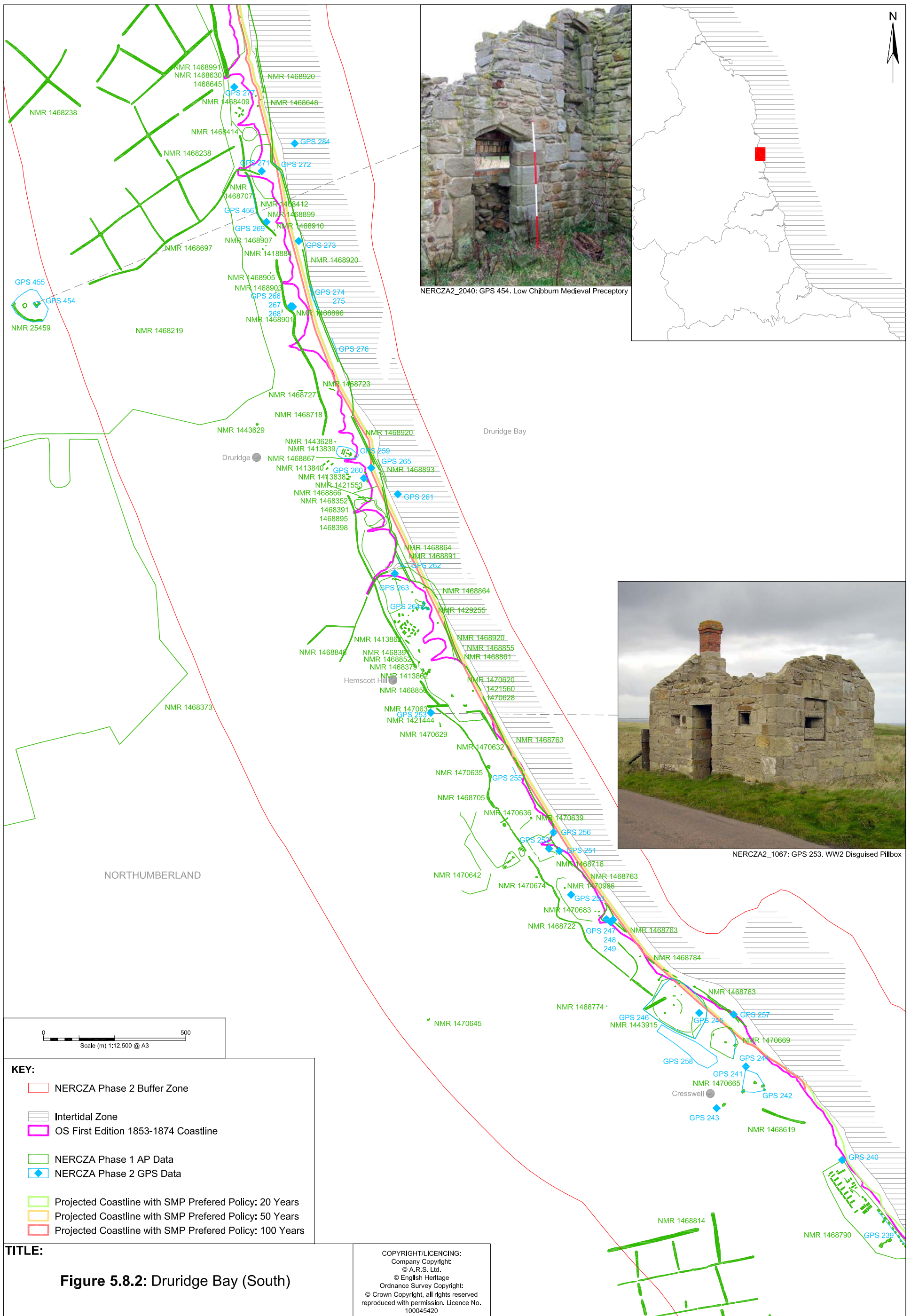
NERCZA2_1026: GPS 352. Hulk

TITLE:

Figure 5.11.1: Amble

COPYRIGHT/LICENCING:
Company Copyright:
© A.R.S. Ltd.
© English Heritage
Ordnance Survey Copyright:
© Crown Copyright, all rights reserved
reproduced with permission, Licence No.
100045420



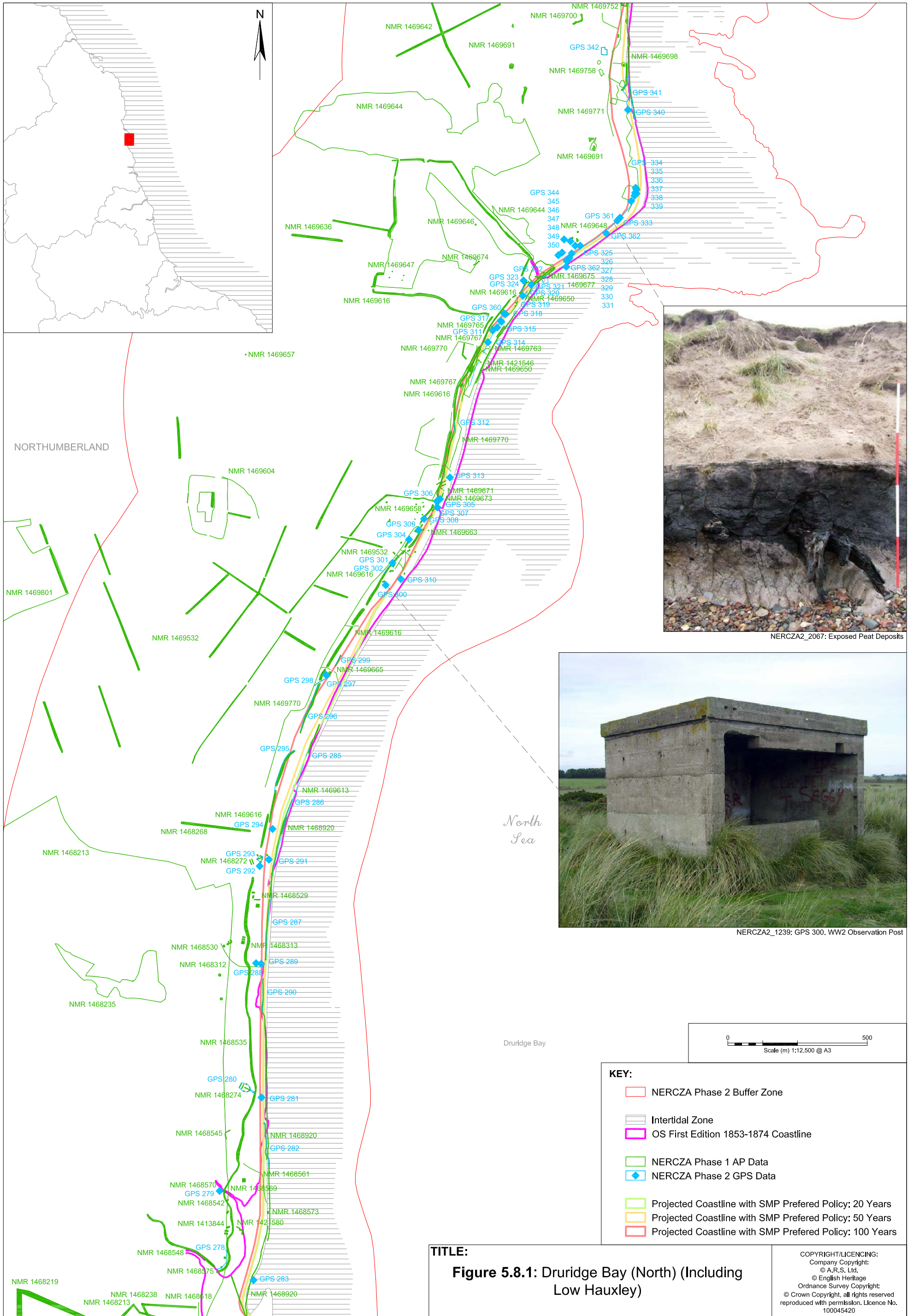


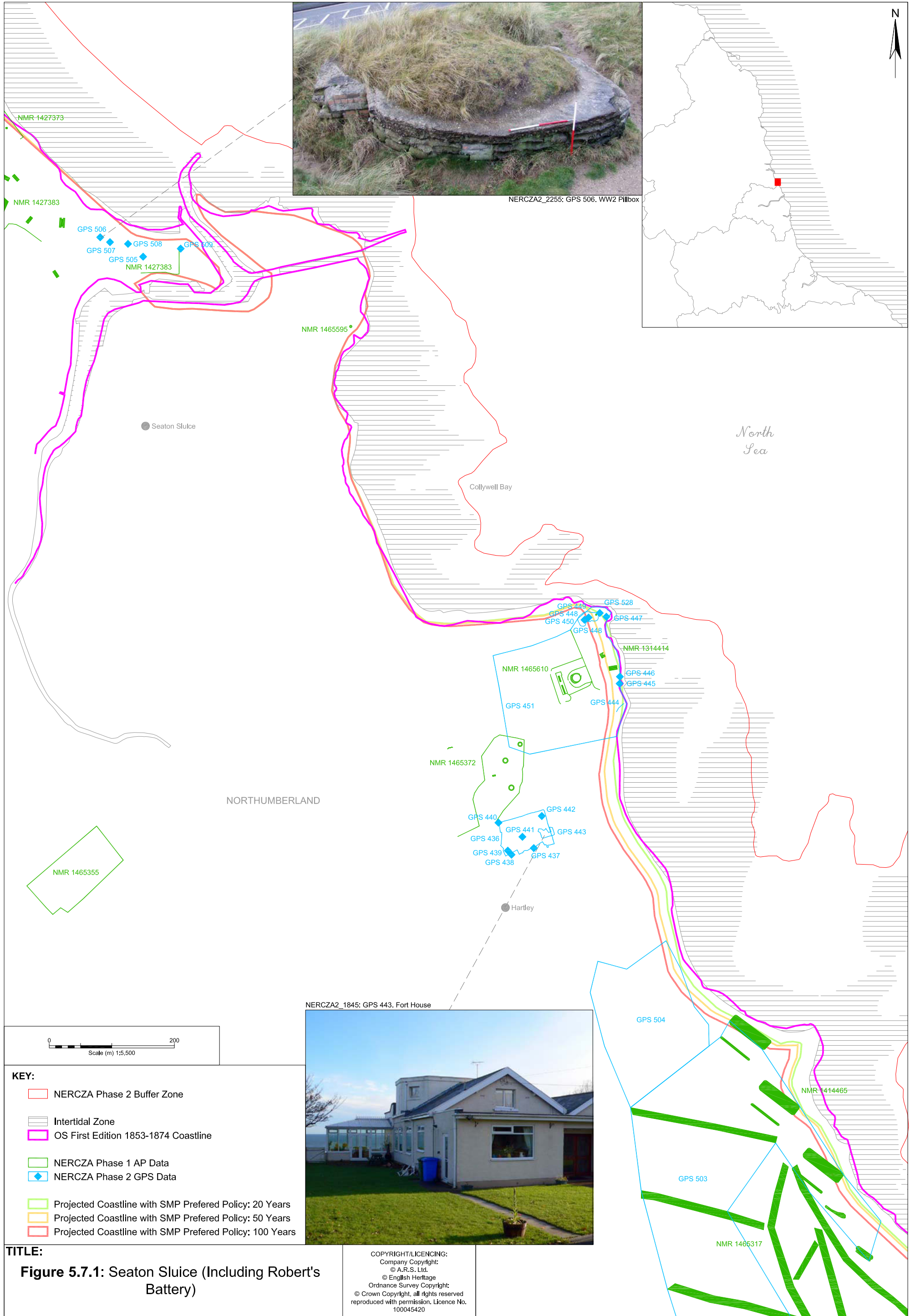
KEY:

- NERCZA Phase 2 Buffer Zone
- Intertidal Zone
- OS First Edition 1853-1874 Coastline
- NERCZA Phase 1 AP Data
- ◆ NERCZA Phase 2 GPS Data
- Projected Coastline with SMP Preferred Policy: 20 Years
- Projected Coastline with SMP Preferred Policy: 50 Years
- Projected Coastline with SMP Preferred Policy: 100 Years

TITLE:
Figure 5.8.2: Druridge Bay (South)

COPYRIGHT/LICENCING:
 Company Copyright:
 © A.R.S. Ltd.
 © English Heritage
 Ordnance Survey Copyright:
 © Crown Copyright, all rights reserved
 reproduced with permission. Licence No.
 100045420

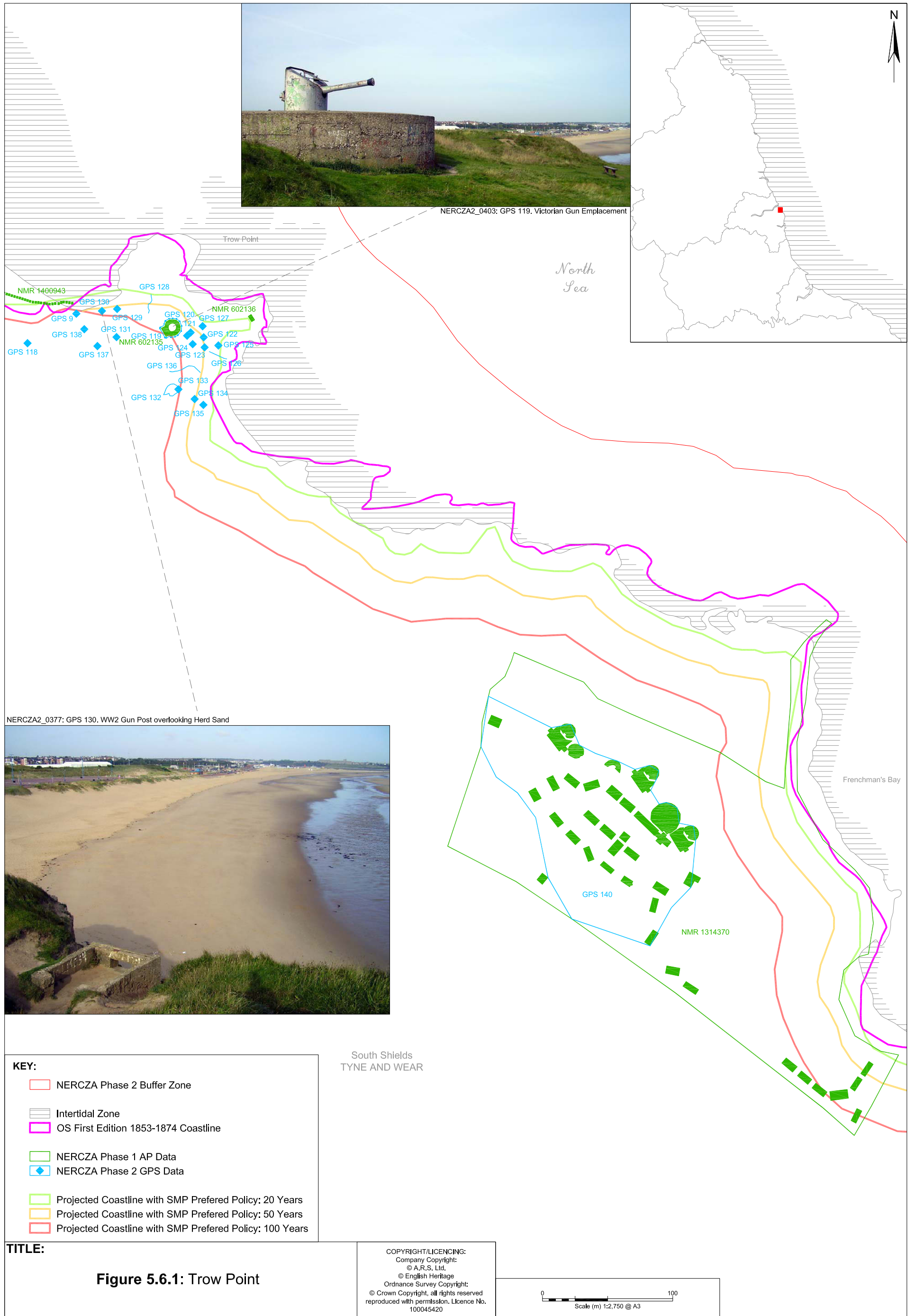




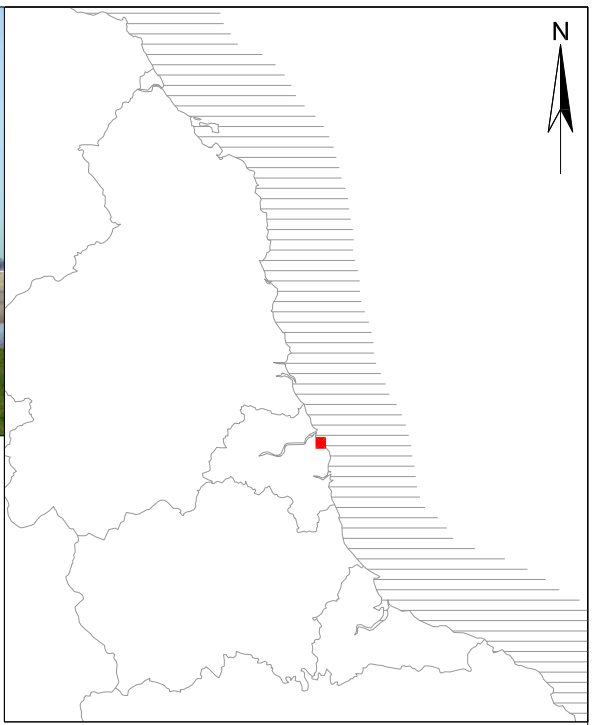
- KEY:**
- NERCZA Phase 2 Buffer Zone
 - Intertidal Zone
 - OS First Edition 1853-1874 Coastline
 - NERCZA Phase 1 AP Data
 - ◆ NERCZA Phase 2 GPS Data
 - Projected Coastline with SMP Preferred Policy: 20 Years
 - Projected Coastline with SMP Preferred Policy: 50 Years
 - Projected Coastline with SMP Preferred Policy: 100 Years

TITLE:
Figure 5.7.1: Seaton Sluice (Including Robert's Battery)

COPYRIGHT/LICENCING:
 Company Copyright:
 © A.R.S. Ltd.
 © English Heritage
 Ordnance Survey Copyright:
 © Crown Copyright, all rights reserved
 reproduced with permission. Licence No.
 100045420

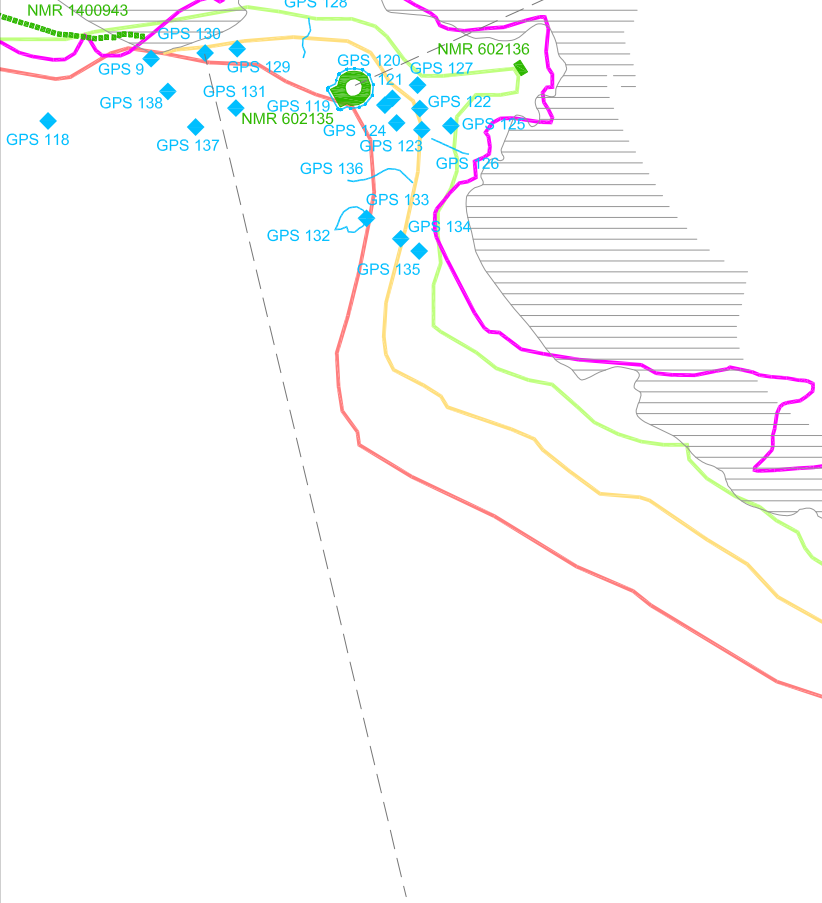


NERCZA2_0403: GPS 119, Victorian Gun Emplacement



Trow Point

North Sea



NERCZA2_0377: GPS 130, WW2 Gun Post overlooking Herd Sand



Frenchman's Bay

KEY:

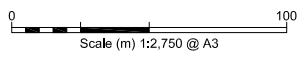
- NERCZA Phase 2 Buffer Zone
- Intertidal Zone
- OS First Edition 1853-1874 Coastline
- NERCZA Phase 1 AP Data
- ◆ NERCZA Phase 2 GPS Data
- Projected Coastline with SMP Preferred Policy: 20 Years
- Projected Coastline with SMP Preferred Policy: 50 Years
- Projected Coastline with SMP Preferred Policy: 100 Years

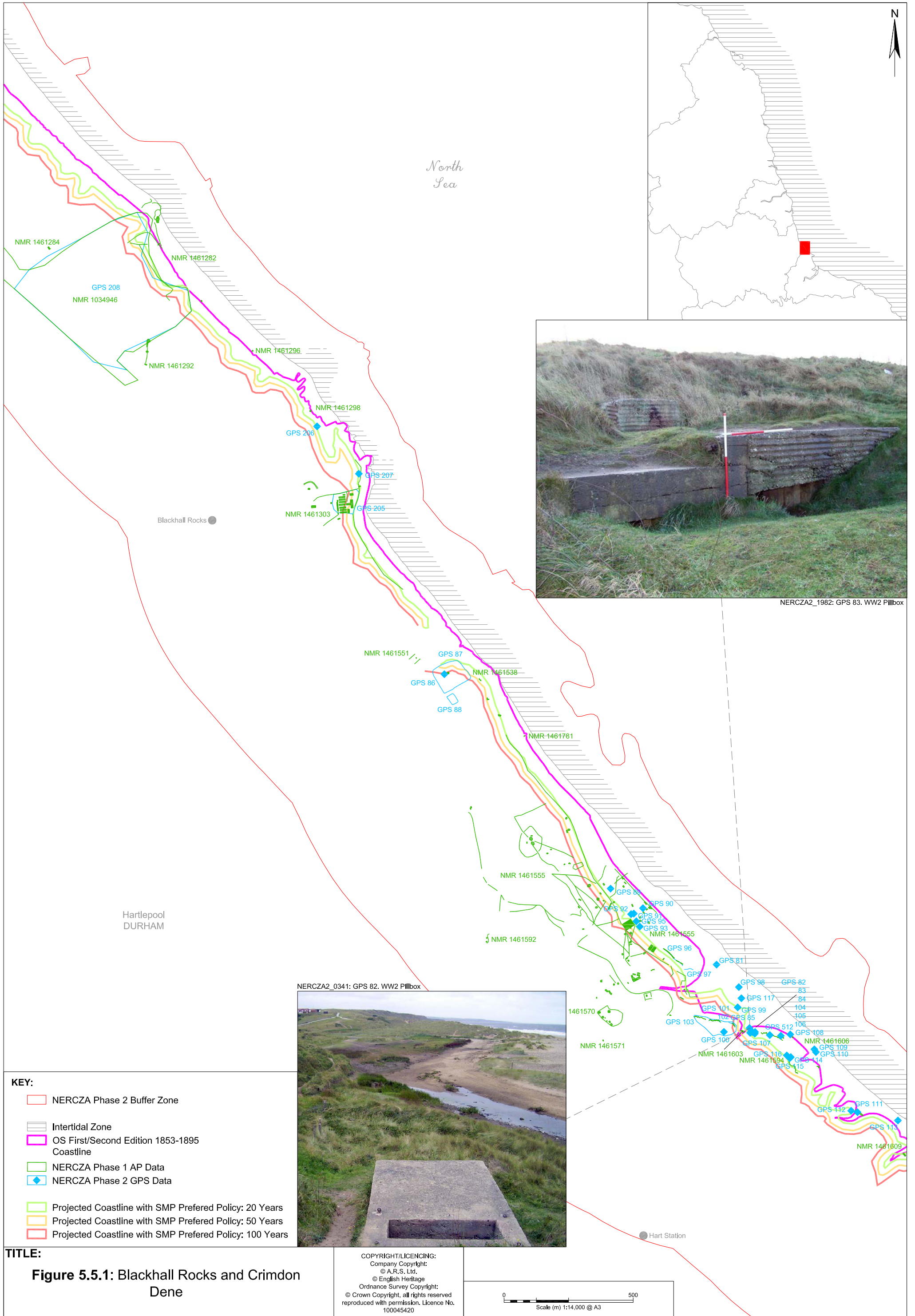
South Shields
TYNE AND WEAR

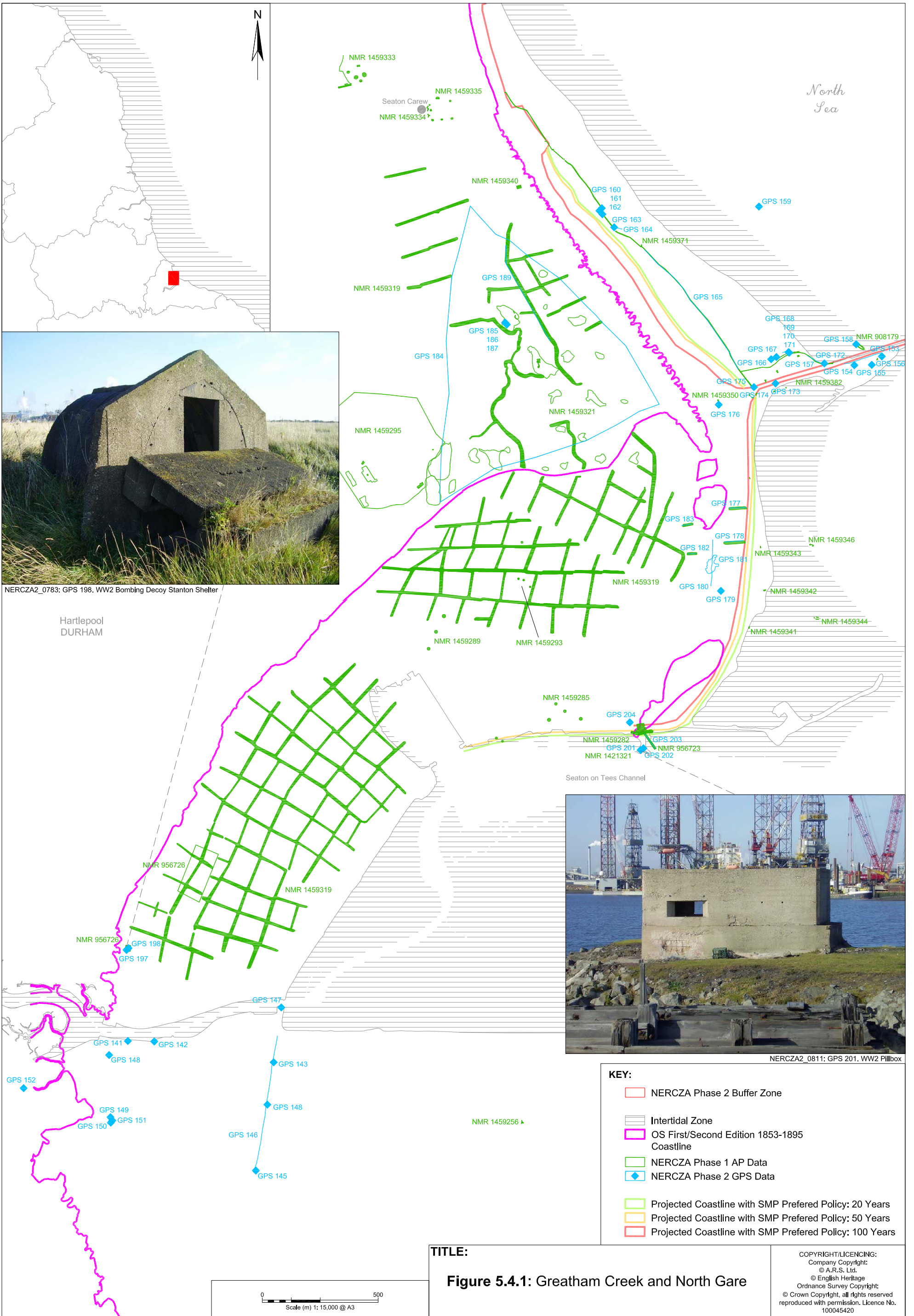
TITLE:

Figure 5.6.1: Trow Point

COPYRIGHT/LICENCING:
Company Copyright:
© A.R.S. Ltd.
© English Heritage
Ordnance Survey Copyright:
© Crown Copyright, all rights reserved
reproduced with permission. Licence No.
100045420





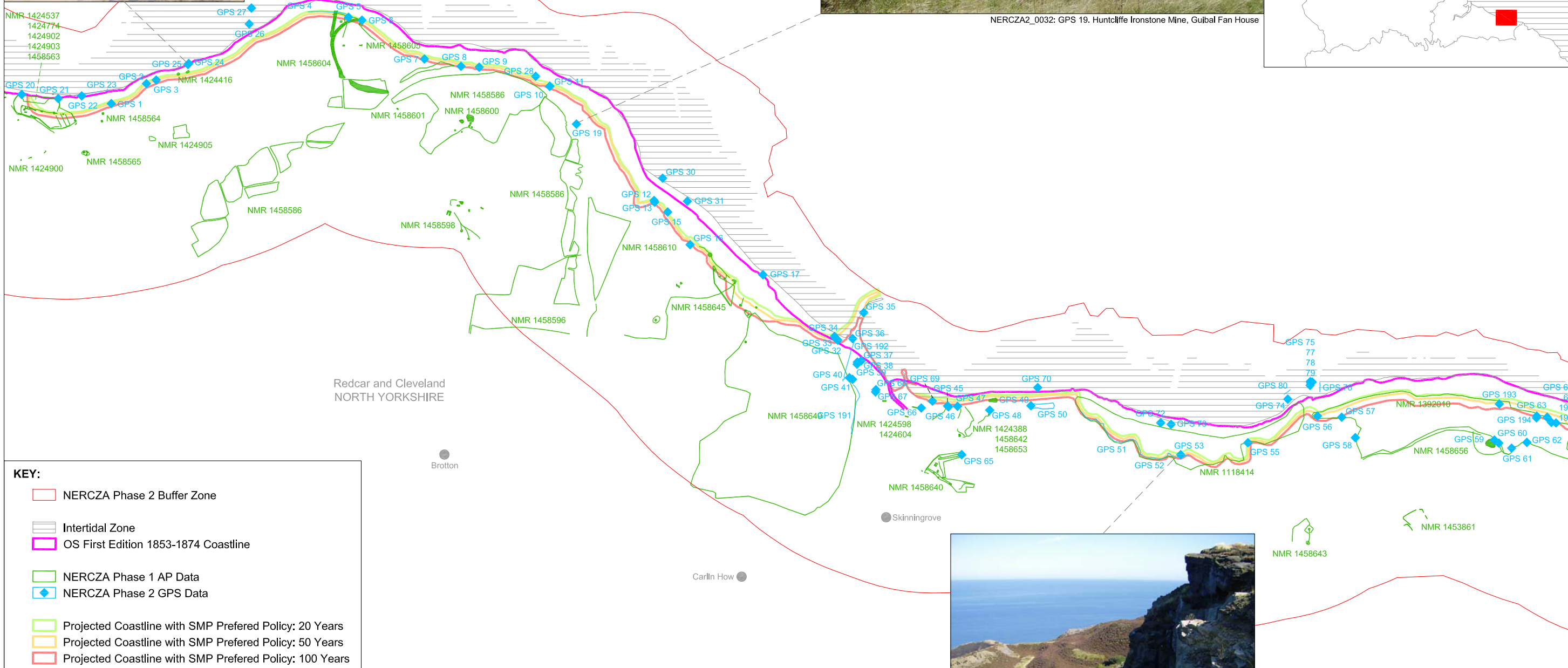
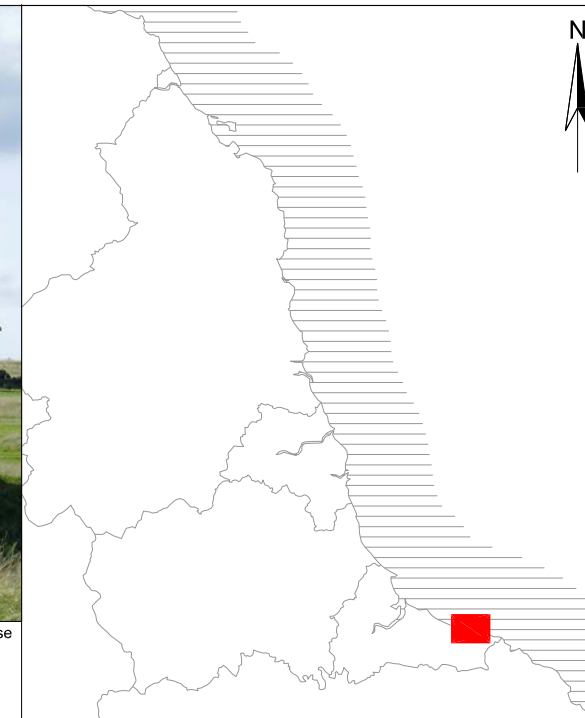




NERCZA2_0065: GPS 24-25. Outfall Sewer



NERCZA2_0032: GPS 19. Huntcliffe Ironstone Mine, Guibal Fan House

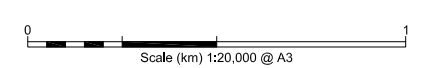


KEY:

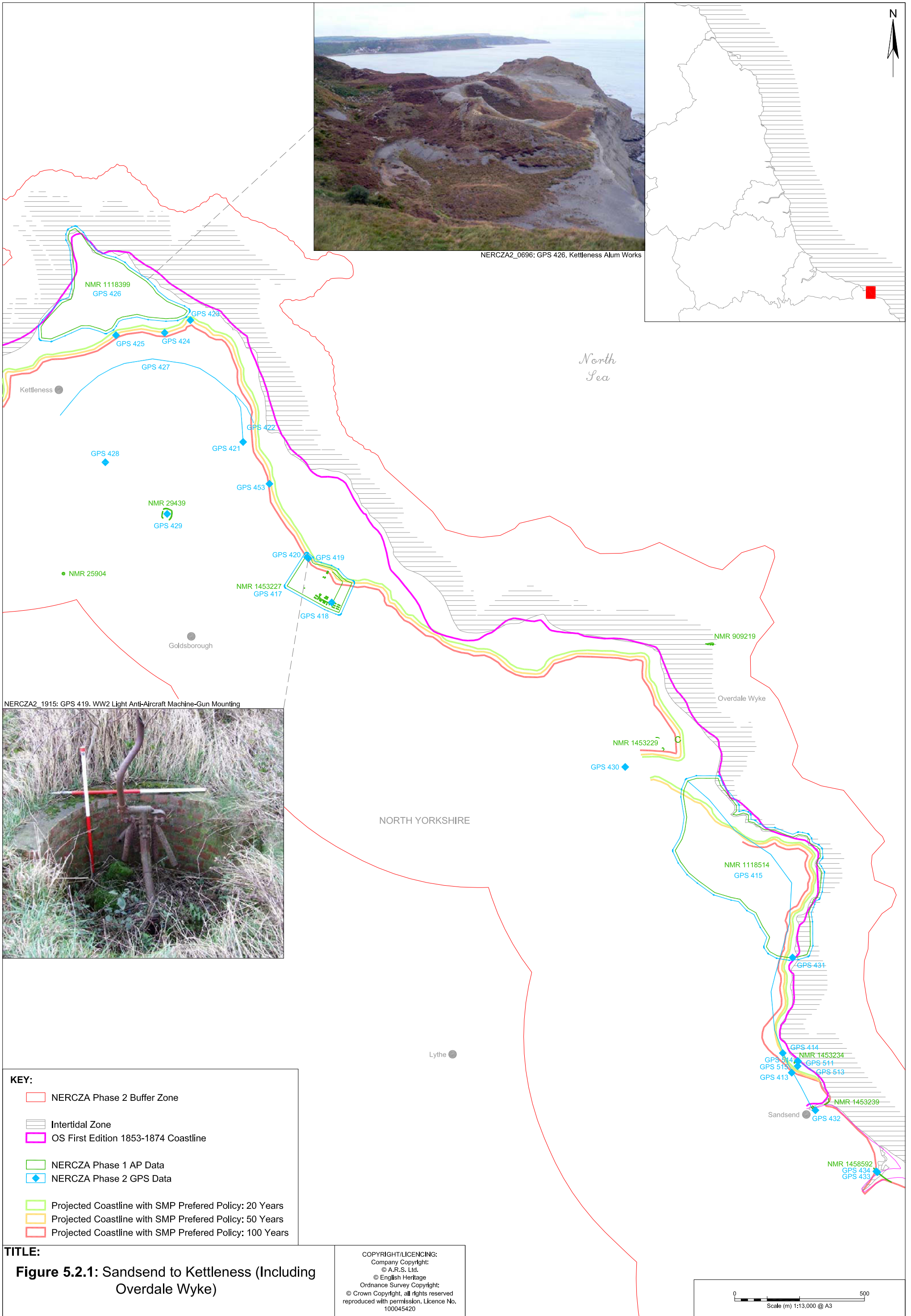
- NERCZA Phase 2 Buffer Zone
- Intertidal Zone
- OS First Edition 1853-1874 Coastline
- NERCZA Phase 1 AP Data
- ◆ NERCZA Phase 2 GPS Data
- Projected Coastline with SMP Preferred Policy: 20 Years
- Projected Coastline with SMP Preferred Policy: 50 Years
- Projected Coastline with SMP Preferred Policy: 100 Years

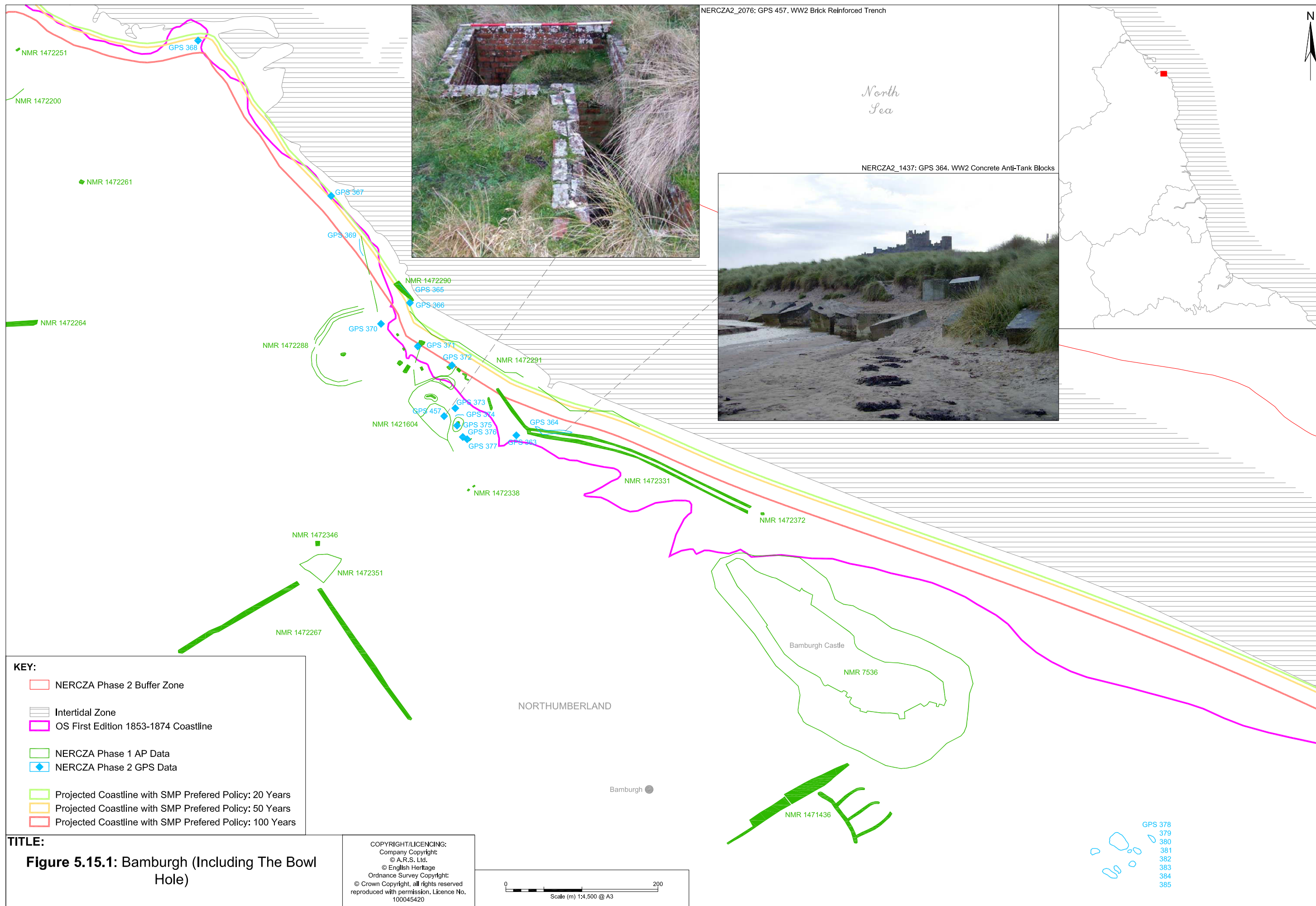
TITLE:
Figure 5.3.1: Saltburn to Skinningrove (Including Loftus Alum Quarry)

COPYRIGHT/LICENCING:
 Company Copyright:
 © A.R.S. Ltd.
 © English Heritage
 Ordnance Survey Copyright:
 © Crown Copyright, all rights reserved
 reproduced with permission. Licence No.
 100045420



NERCZA2_0185: GPS 52. Loftus Alum Works



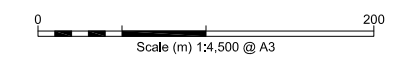


KEY:

- NERCZA Phase 2 Buffer Zone
- Intertidal Zone
- OS First Edition 1853-1874 Coastline
- NERCZA Phase 1 AP Data
- ◆ NERCZA Phase 2 GPS Data
- Projected Coastline with SMP Preferred Policy: 20 Years
- Projected Coastline with SMP Preferred Policy: 50 Years
- Projected Coastline with SMP Preferred Policy: 100 Years

TITLE:
Figure 5.15.1: Bamburgh (Including The Bowl Hole)

COPYRIGHT/LICENCING:
 Company Copyright:
 © A.R.S. Ltd.
 © English Heritage
 Ordnance Survey Copyright:
 © Crown Copyright, all rights reserved
 reproduced with permission. Licence No.
 100045420



- GPS 378
- 379
- 380
- 381
- 382
- 383
- 384
- 385